

Notice of Modification

Section 75W of the *Environmental Planning and Assessment Act 1979*

As delegate of the Minister for Planning, I modify the development consent referred to in Schedule 1, as set out in Schedule 2.



David Kitto
Executive Director
Resource Assessments and Business Systems

Sydney

25 MAY

2018

SCHEDULE 1

The development consent (DA 374-11-00) for the Syerston Nickel Cobalt Project granted by the then Minister for Urban Affairs and Planning on 23 May 2001.

SCHEDULE 2

1. In Schedule 1, in the Definitions:
 - Insert the following new definition:
Accommodation Camp Accommodation camp located on the land listed in Appendix 1 and shown in Figure 8 of Appendix 2
 - In the definition of 'Development', delete the text after 'water pipeline' and insert:
 - gas pipeline; and
 - accommodation camp
 - In the definition of EIS after the last paragraph, insert:
 - Environmental Assessment dated January 2018 and Response to Submissions dated 23 February 2018.
 - Letter prepared by Clean TeQ Holdings Limited dated 16 May 2018.
2. In Schedule 2, Condition 10, after paragraph (l), insert:
and
(m) development of the accommodation camp starts;
(n) commissioning of the accommodation camp starts; and
(o) accommodation camp capacity is reduced.
3. In Schedule 3, Condition 1, Table 1, after " - rail siding;", insert:
- accommodation camp;
4. In Schedule 3, Condition 29, insert the following row at the end of Table 9:

| | |
|-----------------|--|
| Irrigation Area | • Manage the irrigation area in accordance with the EPA's <i>Environmental Guidelines: Use of Effluent by Irrigation</i> |
|-----------------|--|
5. In Schedule 3, Condition 30 (b), after " - water storages", insert:
and
- irrigation area;
6. In Schedule 3, Condition 37, in the heading, delete the word 'Aboriginal' and insert 'Heritage'.

7. In Schedule 3, Condition 43(b):
 - delete the word 'for' and insert 'that';
 - delete 'the implementation of the road upgrades in accordance with the timing outlined in' and insert 'details the scheduling of road upgrades required to be implemented in accordance with'.
8. In Schedule 3, Condition 47, delete 'mine' and insert 'accommodation camp'
9. In Schedule 3, after Condition 47, insert:

47A. Prior to reducing the capacity of the accommodation camp, unless otherwise agreed by the Secretary, the Applicant must prepare a reduced capacity accommodation camp layout in consultation with Lachlan Shire Council, and to the satisfaction of the Secretary.
10. In Schedule 3, Condition 55, Table 10, in the Agriculture objectives, delete 'Land capability classification for the relevant nominated agricultural pursuit for each domain is' and insert 'Agriculture (pasture for grazing) land use areas are'.
11. In Appendix 1, in the Schedule of Land, insert the following row at the end of the table:

| | |
|--------------------|------------------|
| Accommodation camp | Lot 17 DP 752086 |
|--------------------|------------------|
12. In Appendix 2, delete Figure 1: Development Components, and insert:

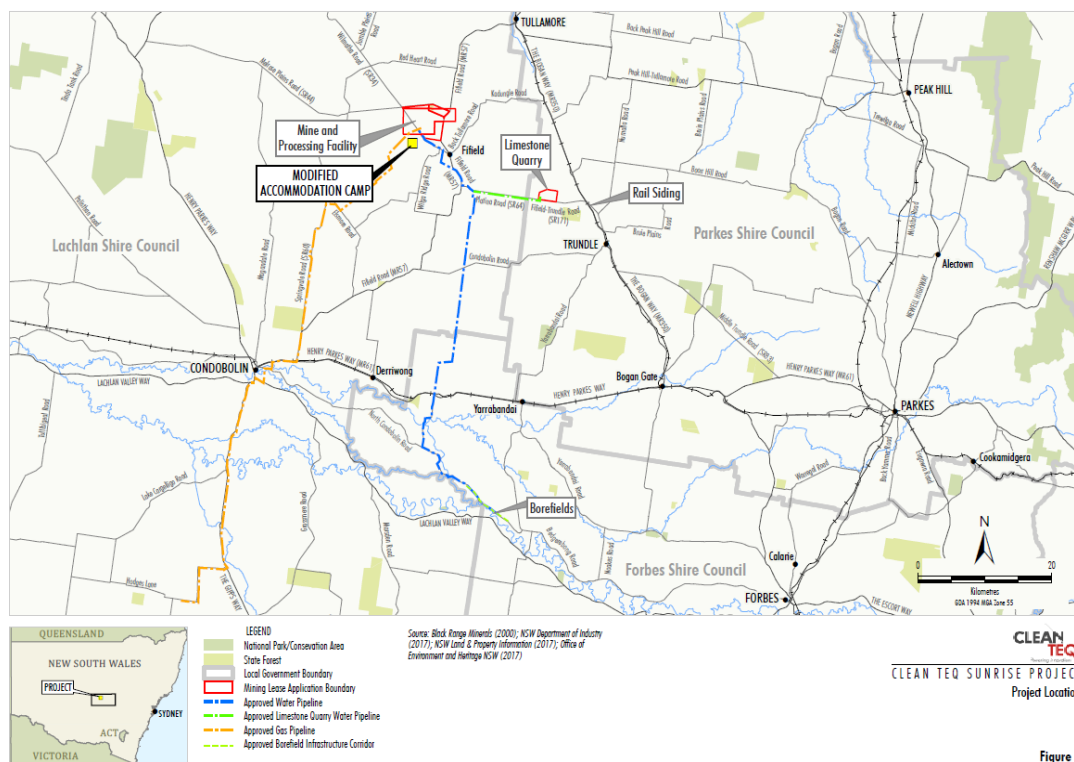
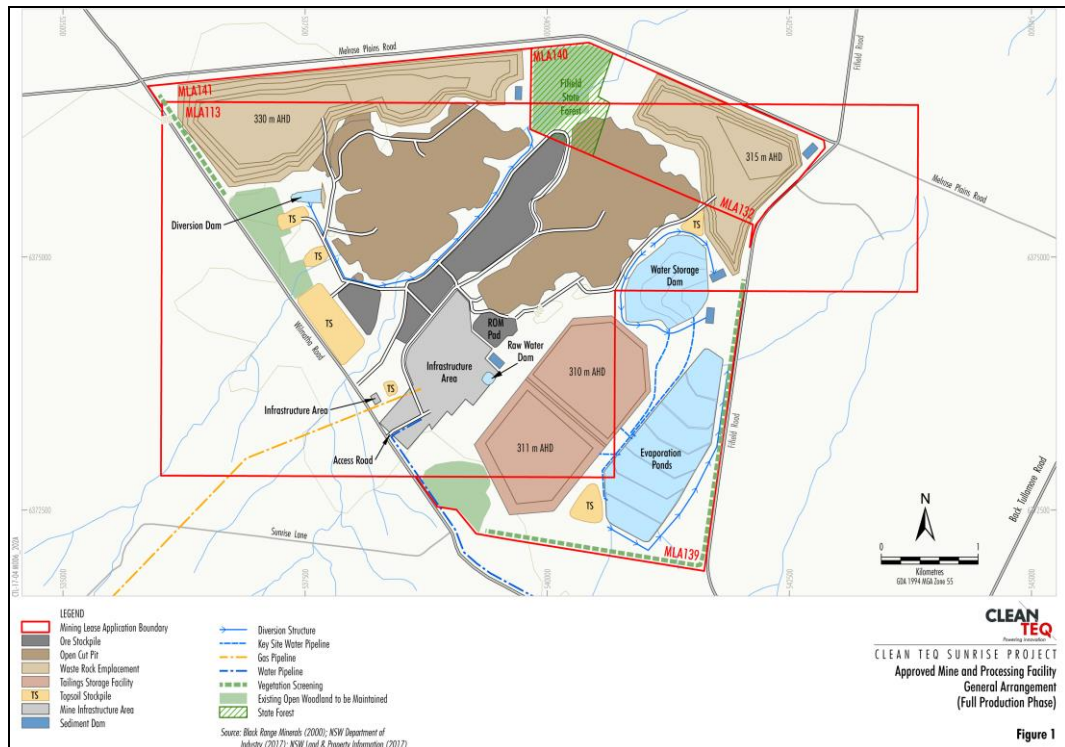
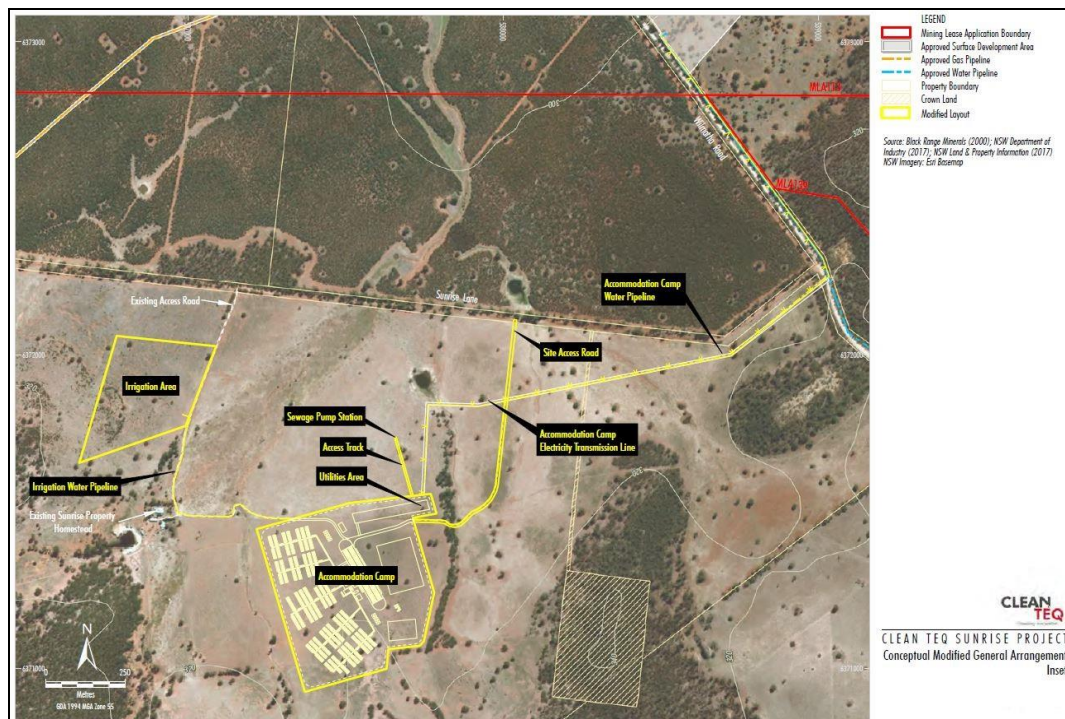


Figure 1

13. In Appendix 2, delete Figure 3: Mine Layout – stage 2, and insert:



14. In Appendix 2, after 'Figure 7: Transport Route', insert:



15. In Appendix 3, under the heading 'Proposed Voluntary Planning Agreement Framework Syerston Nickel Cobalt Project Lachlan Shire Council':

- Under the heading 'Road Upgrades':
 - Delete the number '3.' in the first paragraph.
 - Before the first paragraph,, insert:
 3. Prior to the commissioning of the accommodation camp, the owner shall pay for the following upgrades of Sunrise Lane [SR34] (between the accommodation camp site access road and Wilmatha Road [SR34]):
 - all weather unsealed surface for an operating speed standard of 80 km/h; and.

- carriageway width of 9 m (equivalent to two 3.5 m lanes and two 1.0 m wide shoulders).
 - In the list of intersection upgrades, after the text 'Wilmatha Road [SR34] approaches).', insert:
7. Sunrise Lane/Wilmatha Road [SR34] Intersection - remove the transition between the gravel and dirt surfaces while Wilmatha Road remains unsealed, and then seal a minimum of 30 m of Sunrise Lane on the approach to the intersection once Wilmatha Road is sealed.
 - Under the heading 'Road Maintenance':
 - Delete the number '7.' in the first paragraph.
 - Before the first paragraph insert:
 7. The owner shall maintain Sunrise Lane (between the accommodation camp site access road and Wilmatha Road [SR34]), to the satisfaction of LSC, during construction and operation of the mine and processing facility.
16. In Appendix 5:
- In the Intersection upgrades – prior to commissioning of the mine processing facility, after '(f) Henry Parkes Way and The Bogan Way;', insert:
 and
 (g) Sunrise Lane and Wilmatha Road [SR34]

- at the end of the table, insert the following rows:

| | |
|---|--|
| 4. Road upgrades – prior to commissioning of the accommodation camp | (a) Sunrise Lane, between the accommodation camp and Wilmatha Road [SR34]. |
| 5. Intersection upgrades – prior to commissioning of the accommodation camp | (a) Accommodation camp access track and Sunrise Lane |