



## **Aboriginal Cultural Heritage Management Plan**

Wallerawang Quarry Modification 3 Project

### **Acknowledgement**

Walker Quarries acknowledge Traditional Owners of the area on which this assessment took place and pay respect to their beliefs, cultural heritage and continuing connection with the land. We also acknowledge and pay respect to the post-contact experiences of Aboriginal people with attachment to the area and to the elders, past and present, as the next generation of role models and vessels for memories, traditions, culture and hopes of local Aboriginal people.

## Document Control

Proponent	Walker Quarries Pty Ltd	
Client	Umwelt Australia Pty Ltd	
Document Description	Aboriginal Cultural Heritage Management Plan: Wallerawang Quarry Modification 3 Project	
File Location	OzArk Job No.	
Clients\Umwelt Australia\Walker Quarries Wallerawang ACHMP and Arch Salvage Aug2019\ACHMP report	2432	
Document Status: V1.0 DRAFT		Date: 13 February 2020
Draft V1.1 Author to Editor OzArk 1 <sup>st</sup> Internal (Series V1._ = OzArk internal edits)		V1.0 HR author 13/02/2020 V1.1 AC edit 21/02/20 V1.2 BC edit 28/02/20
Draft V2.0 Report Draft for release to client (Series V2._ = OzArk and Client edits)		V2.0 to client 28/02/20 V2.1 HR add client edits 06/03/20 V2.2 HR add RAP comment 09/03/20 V2.3 BC edit 14/04/20
FINAL V3._once latest version of draft approved by client		V3.0 FINAL HR incorporate BCD comments 05/05/20 V3.1 HR address DPIE comments 16/07/20 V3.1 BC edit 20/7/20 V3.2 HR address client edits 26/7/20
Prepared For		Prepared By
Alex Irwin Principal Environmental Consultant Umwelt (Australia) Office 1/3 Hampden Avenue Orange, NSW 2800		Dr Alyce Cameron and Harrison Rochford Senior Archaeologist and Heritage Officer OzArk Environment & Heritage 145 Wingewarra Street (PO Box 2069) Dubbo NSW 2830 P: 02 6882 0118 <a href="mailto:alyce@ozarkehm.com.au">alyce@ozarkehm.com.au</a> ; <a href="mailto:harrison@ozarkehm.com.au">harrison@ozarkehm.com.au</a>
COPYRIGHT		
© OzArk Environment & Heritage 2020 and © Umwelt (Australia) 2020		
All intellectual property and copyright reserved.		
Apart from any fair dealing for private study, research, criticism or review, as permitted under the Copyright Act, 1968, no part of this report may be reproduced, transmitted, stored in a retrieval system or adapted in any form or by any means (electronic, mechanical, photocopying, recording or otherwise) without written permission.		
Enquiries should be addressed to OzArk Environment & Heritage.		

## ABBREVIATIONS AND GLOSSARY

ACHAR	Aboriginal Cultural Heritage Assessment Report. As set out in the <i>Code of Practice for Archaeological Investigation of Aboriginal Objects in New South Wales</i> , all developments where harm to Aboriginal objects is likely must be assessed in an ACHAR.
ACHCRs	<i>Aboriginal Cultural Heritage Consultation Requirements for Proponents</i> . Guidelines for conducting Aboriginal community consultation for developments where harm to Aboriginal objects is likely.
AHIMS	Aboriginal Heritage Information Management System. Administered by Department of Premier and Cabinet, AHIMS is the central register of all Aboriginal sites within NSW.
BCD:	Biodiversity and Conservation Division. Government department formerly tasked with ensuring compliance with the NPW Act. Superseded by Heritage NSW.
Code of Practice	<i>Code of Practice for Archaeological Investigation of Aboriginal Objects in New South Wales</i> under Part 6 NPW Act. Set of guidelines framing Aboriginal archaeological investigations in NSW.
DPIE	NSW Department of Planning, Industry and Environment
EIS	Environmental Impact Statement. A required document for major projects documenting all potential impacts to the environment, including heritage, that may arise due to the development.
Heritage NSW	Government department tasked with ensuring compliance with the NPW Act.
NPW Act	<i>National Parks and Wildlife Act 1974</i> . Primary legislation governing Aboriginal cultural heritage within NSW.
OEH	Office of the Environment and Heritage. Former government department tasked with ensuring compliance with the NPW Act. Superseded by BCD.
PAD	Potential archaeological deposit. Indicates that a particular location has potential to contain subsurface archaeological deposits, although no Aboriginal objects are visible.
RAP	Registered Aboriginal Party. An individual or group who have indicated through the ACHCR process that they wish to be consulted regarding the project.
SEE	Statement of Environmental Effect
SSD	State Significant Development



## CONTENTS

<b>ABBREVIATIONS AND GLOSSARY.....</b>	<b>4</b>
<b>CONTENTS .....</b>	<b>5</b>
<b>1 INTRODUCTION .....</b>	<b>7</b>
1.1 Background information .....	7
1.2 Purpose and scope of this Plan.....	7
<b>2 LEGISLATIVE FRAMEWORK.....</b>	<b>9</b>
2.1 Plan compliance with development consent conditions .....	9
2.2 Plan review .....	9
2.3 Preparation of this Plan.....	10
<b>3 CONSULTATION GUIDELINES.....</b>	<b>11</b>
3.1 Aboriginal community consultation.....	11
3.1.1 Aboriginal community consultation for the SEE .....	11
3.1.2 Aboriginal community consultation on this Plan .....	11
3.1.3 Protocol for continued Aboriginal community consultation.....	11
3.2 Consultation with external stakeholders .....	12
<b>4 ABORIGINAL CULTURAL HERITAGE.....</b>	<b>13</b>
4.1 Identified Aboriginal cultural heritage .....	13
4.2 Summary of impacts .....	13
<b>5 MANAGEMENT OF ABORIGINAL CULTURAL HERITAGE .....</b>	<b>15</b>
5.1 Commencement of operations .....	15
5.2 Cultural heritage awareness .....	15
5.3 Management of site WQ1 .....	16
5.3.1 Surface salvage .....	16
5.3.2 Care and control of salvaged materials .....	17
5.4 Protocol for unanticipated finds .....	17
5.5 Human skeletal remains protocol.....	18
5.6 Activities outside current approval areas.....	18
<b>6 ROLES, RESPONSIBILITIES AND TIMEFRAMES.....</b>	<b>20</b>
<b>REFERENCES .....</b>	<b>22</b>

<b>APPENDIX 1: AUTHORS' CURRICULUM VITAE .....</b>	<b>23</b>
<b>APPENDIX 2: STAKEHOLDER CONSULTATION LOG AND CORRESPONDENCE .....</b>	<b>27</b>
<b>APPENDIX 3: BCD CONSULTATION.....</b>	<b>29</b>

## FIGURES

---

Figure 1-1: Map showing the location of the project. ....	7
Figure 1-2: Aerial showing the area covered by the Plan. ....	8
Figure 4-1: Location of WQ1 within the extraction area. ....	14
Figure 5-1: Human skeletal remains protocol. ....	19

## TABLES

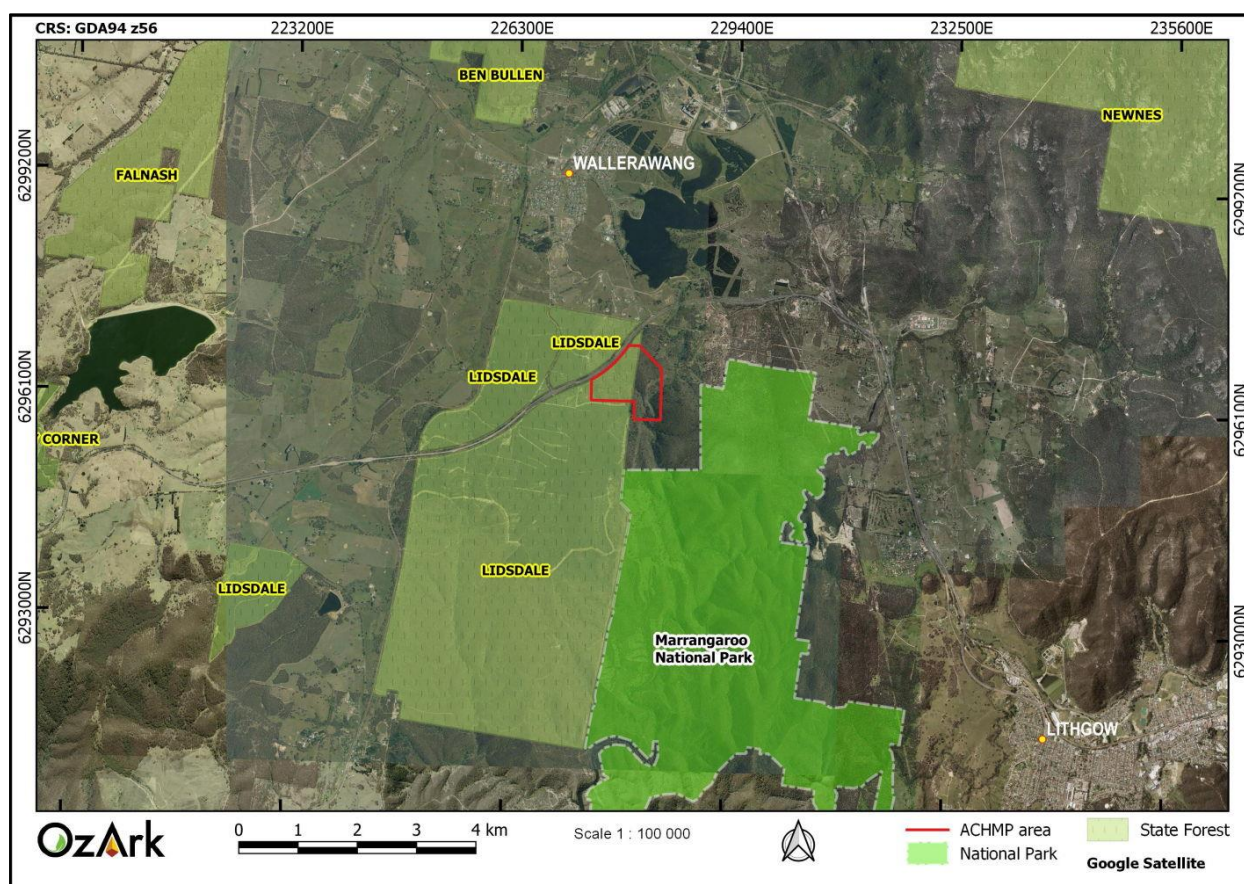
---

Table 2-1: Plan compliance with the consent conditions. ....	9
Table 4-1: Site details of WQ1. ....	13
Table 4-2: Impact assessment. ....	13
Table 6-1. Roles responsibilities and timeframes. ....	20

# 1 INTRODUCTION

This Aboriginal Cultural Heritage Management Plan (the Plan) is for the Wallerawang Quarry (DA 344-11-2001 as modified) (the project). This Plan was initiated by the consent for DA 344-11-2001 Modification 3 (MOD3). The project is in the City of Lithgow Local Government Area (LGA) approximately eight kilometres (km) northwest of Lithgow NSW (**Figure 1-1**).

**Figure 1-1: Map showing the location of the project.**



## 1.1 BACKGROUND INFORMATION

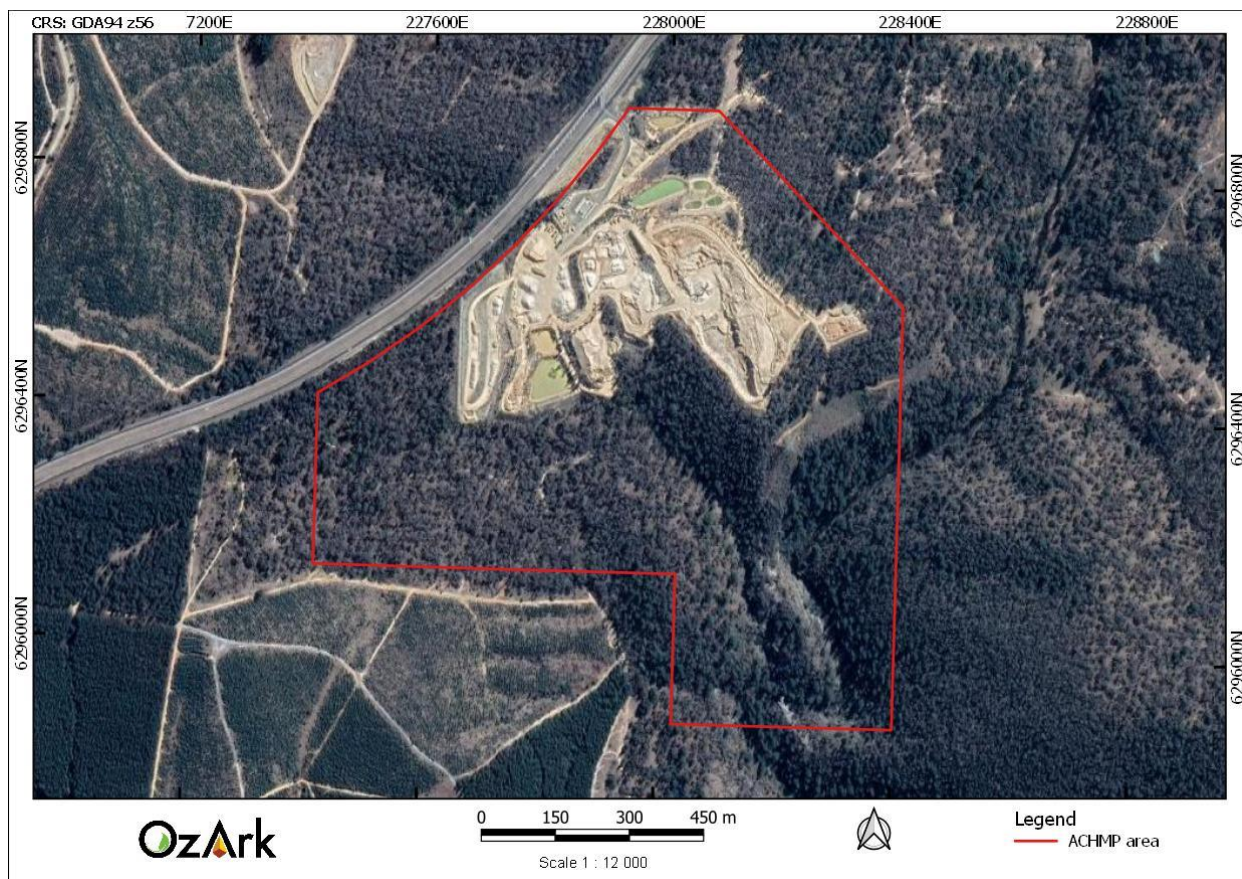
Ten hectares (ha) of the project area was subject to Aboriginal archaeological assessment by Silcox (2000), resulting in the identification of one site (WQ1; AHIMS 45-1-2802). OzArk (2018) were engaged to verify the condition of WQ1 and complete an Aboriginal Cultural Heritage Assessment Report (ACHAR) to support a Statement of Environmental Effects (SEE) for a State Significant Development (SSD) modification to DA 344-11-2001 (MOD3).

## 1.2 PURPOSE AND SCOPE OF THIS PLAN

This Plan will guide the heritage management policies for the project and create a framework for unanticipated finds, ongoing community consultation and internal policy review throughout the life of the project.

The Plan is limited to the ACHMP Area shown on **Figure 1-2** and addresses the conditions of consent of DA 344-11-2001 (as modified). The ACHMP Area includes the current Wallerawang Quarry Mining Lease (ML) 1633, as well as the expanded lease area included in Modification 3.

**Figure 1-2: Aerial showing the area covered by the Plan.**





## 2 LEGISLATIVE FRAMEWORK

### 2.1 PLAN COMPLIANCE WITH DEVELOPMENT CONSENT CONDITIONS

The project was assessed under Part 4 of the *Environmental Planning and Assessment Act 1979* (EP&A Act). All Aboriginal sites within the project area are afforded legislative protection under the *National Parks and Wildlife Act 1974* (NPW Act).

This Plan has been developed to meet consolidated consent condition 23C for the project and includes measures that address conditions 21, 22, 23, 23A and 23B.

**Table 2-1: Plan compliance with the consent condition Section 5.6s.**

Development Consent Condition	Context of the Condition	Concordance in this report
21	Ensure no harm to identified heritage item outside approved disturbance area.	<b>Section 5.6</b>
22	Manage the potential discovery of human remains over the life of the project.	<b>Section 5.5</b>
23 and 23A	Manage the potential discovery new Aboriginal objects over the life of the project.	<b>Section 5.4</b>
23 B	Manage recording of Aboriginal objects or places over the life of the project.	<b>Section 5.6</b>
23 C a)	Preparation of an ACHMP by a qualified and experienced person.	<b>Section 2.3</b>
23 C b)	ACHMP be prepared with BCD and RAPs.	<b>Section 3</b>
23 C c) (i)	Comply with the conditions of consent.	<b>Section 2.1</b>
23 C c) (ii)	Aboriginal cultural heritage inductions for all workers.	<b>Section 5.2</b>
23 C c) (iii)	Protect, monitor and manage identified Aboriginal sites and places.	<b>Section 5.3</b>
23 C c) (iv)	Protect Aboriginal sites and places outside the approved disturbance area from project related impacts.	<b>Section 5.6</b>
23 C c) (v)	Manage the potential discovery of human remains or new Aboriginal objects over the life of the project.	<b>Section 5.4 and 5.5</b>
23 C c) (vi)	Maintain and manage access for Aboriginal stakeholders to Aboriginal site or places outside approved disturbance area.	<b>Section 3.1.3</b>
23 C c) (vii)	Facilitate ongoing consultation and involvement of RAPs.	<b>Section 3.1</b>
23 C d)	Care, control and storage of artefacts salvaged on site, including. AHIMS Site #45-1-2802.	<b>Section 5.3.2</b>
23 D.	Work not to commence until ACHMP endorsed by BCD Secretary.	<b>Section 6</b>
23 E.	Implementation of the ACHMP.	<b>Section 6</b>

### 2.2 PLAN REVIEW

This Plan will be reviewed within three months of submitting further modifications to the project and subject to review after every three years of operation.

Unscheduled review or changes to the Plan will be made should any of the following occur:

- Incidents involving Aboriginal cultural heritage
- Identification of new Aboriginal sites
- Approved changes of scope that introduce or remove impacts to Aboriginal heritage.

Changes to this Plan will be presented to Registered Aboriginal Parties (RAPs) and the Biodiversity and Conservation Division (BCD, now Heritage NSW) for review and comment unless the changes fall into a category of routine updates (such as adding sites to an inventory list after a survey or updating AHIMS data as part of approved salvage operations), in which case relevant parties will be notified as is appropriate.

## **2.3 PREPARATION OF THIS PLAN**

In recognition of the requirements of Condition 23 C a), this Plan has been prepared by Dr Alyce Cameron and Harrison Rochford of OzArk Environment and Heritage Management (OzArk). Details of Alyce Cameron's and Harrison Rochford's capabilities and experience is provided in **Appendix 1**.

---

## 3 CONSULTATION GUIDELINES

---

### 3.1 ABORIGINAL COMMUNITY CONSULTATION

#### 3.1.1 Aboriginal community consultation for the SEE

Consultation with the Aboriginal community was undertaken in accordance with the *Aboriginal Cultural Heritage Consultation Requirements for Proponents* (ACHCRs) (DECCW 2010) during the approvals process for the project. Stage 1 advertising for expressions of interest in the project began on 15 May 2018. The following organisations expressed interest in being RAPs for the project:

- Yurrandaali Cultural Services
- Barraby Cultural Services
- Murra Bidgee Mullangari Aboriginal Corporation Cultural Heritage
- Mingaan Wiradjuri Aboriginal Corporation
- Merrigarn
- Muragadi Heritage Indigenous Corporation
- Yulay Cultural Service
- Warrabinga Native Title Aboriginal Corporation
- Gundungurra Tribal Council Aboriginal Corporation
- Bathurst Local Aboriginal Land Council

All RAPs were provided with the proposed survey methodology during stage 2/3 of the ACHCRs and presented the draft ACHAR for comment on the 30 April 2018 as part of Stage 4 of the ACHCRs.

#### 3.1.2 Aboriginal community consultation on this Plan

All RAPs received a copy of the draft Plan on 17 March 2020 with a request that any comments be received by OzArk by 31 March 2020. A list of the RAPs that were consulted on the Plan is provided in **Appendix 2**.

As of 14 April 2020, one comment was offered from Barraby Cultural Services on 3 April 2020 indicating that they had no suggestions or queries of the Plan.

#### 3.1.3 Protocol for continued Aboriginal community consultation

Changes to the Plan will be provided to the RAPs for review unless the changes are minor in nature (i.e. updating inventories or Aboriginal Heritage Information Management System [AHIMS] data, as defined in **Section 2.2**).

Reasonable requests for access to project area and/or its Aboriginal objects will be granted on request, provided staff are available for site escort and all workplace health and safety requirements can be addressed.

Ongoing community consultation during the project will include (but is not limited to):

- RAPs providing site officers for heritage surveys (if required by the proposed methodology, see **Section 5.6**);
- RAP consultation before any archaeological salvage program (**Section 5**)
- Granting of reasonable requests for access to Aboriginal sites and objects at the project area
- RAP input for non-administrative revisions or changes to this Plan (**Section 2.2**).

### **3.2 CONSULTATION WITH EXTERNAL STAKEHOLDERS**

This Plan has been prepared in consultation with the BCD (now Heritage NSW). BCD were sent a draft for review on 14 April 2020 and requested that **Figure 5-1** be updated to include BCD notification in the human skeletal remains protocol (**Appendix 3**). This update is included in this version of the Plan.



## 4 ABORIGINAL CULTURAL HERITAGE

### 4.1 IDENTIFIED ABORIGINAL CULTURAL HERITAGE

The ACHAR for the project was completed by OzArk in June 2019. There is one Aboriginal site in the project area: WQ1 (AHIMS 45-1-2802). The site covers an area of approximately 65 metres (m) x 27 m and contains up to 16 artefacts (**Table 4-1**). The location of site WQ1 is shown on **Figure 4-1**.

**Table 4-1: Site details of WQ1.**

Site number	Site name	GDA Zone 56 Easting	GDA Zone 56 Northing	Details
45-1-2802	WQ1	227905	6296556	Artefact scatter (65 m x 27 m) featuring 16 artefacts, predominantly flakes manufactured from quartz and mudstone.

### 4.2 SUMMARY OF IMPACTS

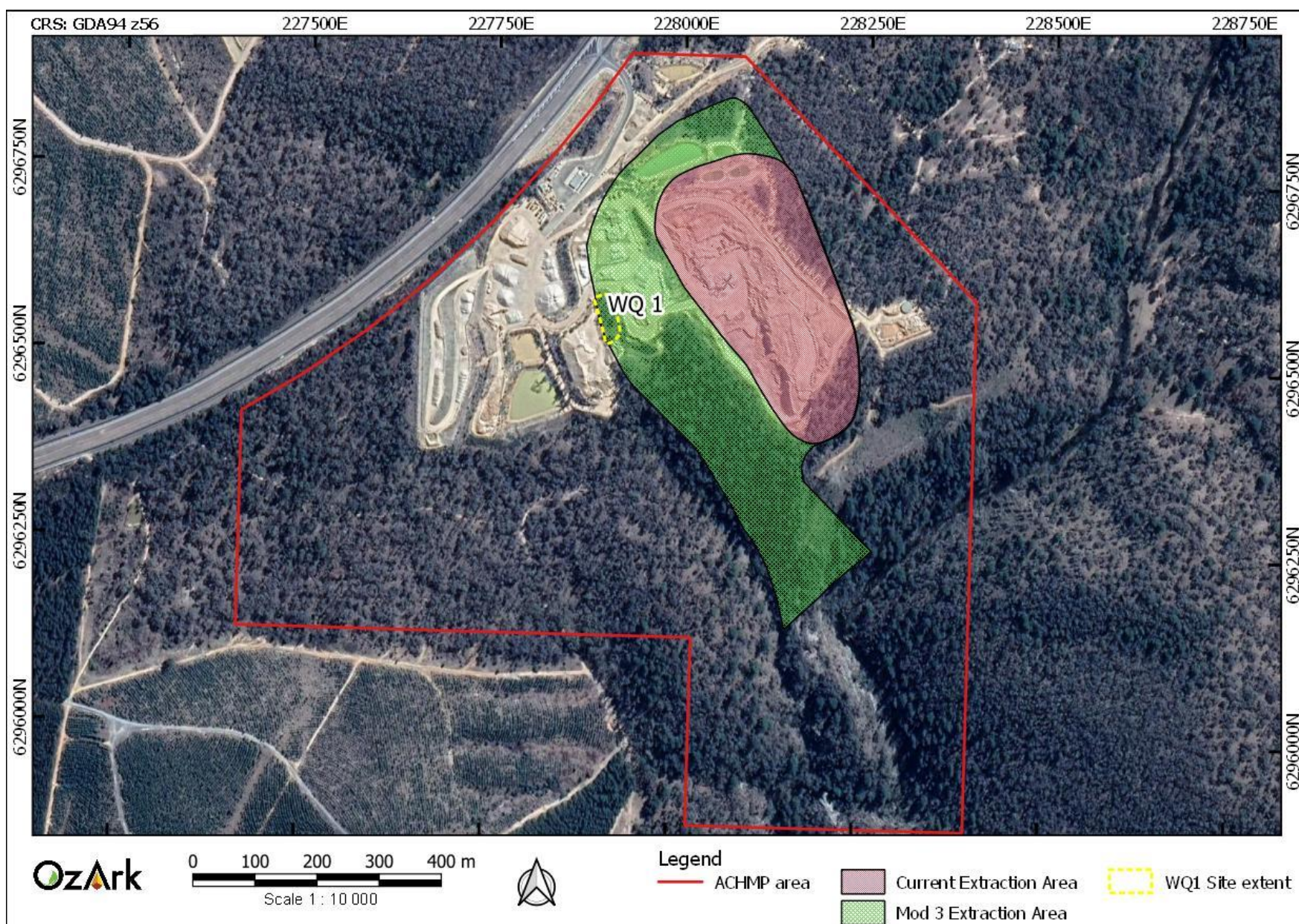
The Aboriginal site, AHIMS 45-1-2802 (WQ1), will be disturbed by the project. **Table 4-2** summarises the assessment of the impact to AHIMS 45-1-2802.

**Table 4-2: Impact assessment.**

Site Number & Name	Type of Harm (Direct/Indirect/None)	Degree of Harm (Total/Partial/None)	Consequence of Harm (Total/Partial/No Loss of Value)	Potential impact
45-1-2802 (WQ1)	Direct	Total	Total loss of value	The Quarry operations will extend over the entire area comprising the site. As such all artefacts and site features will be subject to direct impact from the work.

It was concluded in the ACHAR that the impact to recorded site WQ1 would result in a medium loss of heritage value from the regional Aboriginal cultural heritage values.

Figure 4-1: Location of WQ1 within the extraction area.



## 5 MANAGEMENT OF ABORIGINAL CULTURAL HERITAGE

Appropriate management of cultural heritage items is primarily determined on the basis of their assessed significance as well as the potential impacts of the proposed development.

### 5.1 COMMENCEMENT OF OPERATIONS

To minimise the risk of harm to Aboriginal cultural heritage items, work will not commence at the project area until the Plan has been approved by Department of Planning, Industry and Environment (DPIE). It will be the responsibility of Walker Quarries manager to ensure the correct implementation of this Plan (see **Table 6-1**).

### 5.2 CULTURAL HERITAGE AWARENESS

All staff and contractors engaged in works disturbing ground or vegetation at the site will be given an induction that includes information on the Aboriginal cultural values and artefacts present in the area. This will include staff and contractors being made aware of their responsibilities under NPW Act and the location of known sites.

All employees, contractors, sub-contractors and visitors to the ACHMP Area have an obligation to avoid harming Aboriginal heritage unless engaged in approved development activity in an area where Aboriginal salvage obligations have been met as described in this Plan.

The definition of harm used in this plan stems from the definition in Section 5 of the NPW Act. The examples used below are for illustrative purposes and are not exhaustive.

Harm to an Aboriginal object or Aboriginal site means:

- Moving or collecting stone artefacts (although picking up artefacts and inspecting them is acceptable as long as they are immediately returned to their original location)
- Disturbing the earth where stone artefacts are located, e.g. by earthworks for drains, roads, etc.
- Breaking stone artefacts, e.g. by running over them in a vehicle
- Causing damage to a grinding groove sandstone platform by creating or exacerbating cracks
- Cutting down, disturbing or otherwise marking scarred trees.

The Aboriginal heritage induction will include the following points expressed in plain language:

- Further Aboriginal sites may occur across the ACHMP Area
- Aboriginal sites are of great significance to the Aboriginal community, are important to the wider community and will be treated with respect
- Aboriginal sites are protected by law. The development consent for the mine includes conditions allowing impact to certain specified Aboriginal sites described in the SEE and this Plan



- Aboriginal sites can be hard to recognise, so if unsure, check
- Aboriginal artefacts are often hidden within the topsoil and are not readily visible. The apparent absence of a site does not mean it is no longer in existence.

A register will be kept and updated to record employees who have completed the Aboriginal heritage induction and their date of completion.

### 5.3 MANAGEMENT OF SITE WQ1

Impact avoidance to WQ1 (artefacts and site features of AHIMS 45-1-2802) is not considered feasible. **Table 4-2** describes the disturbance to WQ1. The management of WQ1 was the subject of an ACHAR (OzArk 2019), which concluded that the site should be subject to a collection of surface artefacts as described in **Section 5.3.1**.

#### 5.3.1 Surface salvage

Objects from WQ1 will be recorded and collected from the whole of the site area by a qualified archaeologist together with RAPs. In the interim, the site will be fenced to prevent any damage or inadvertent entry into the site by quarry operations until the recovery process is complete.

The following methodology will be followed for the surface collection of Aboriginal artefacts at the site:

- All visible artefacts at the site will be flagged
- The artefacts will be photographed after flagging and before recording
- The following information will be collected for each artefact:
  - GPS location
  - type
  - size
  - reduction level
  - raw material
  - any relevant notes.
- Once all recording is complete, the artefacts will be collected and placed in appropriately labelled bags
- The recording and analysis of the artefacts recovered will be largely completed in the field and this data will be interpreted and documented in a salvage report to Heritage NSW and the RAPs
- The supervising archaeologist would be responsible for submitting an *Aboriginal Site Impact Recording Form* (ASIRF) to the AHIMS to update the register with the results of the salvage works at the site.



### 5.3.2 Care and control of salvaged materials

Any salvaged artefacts will be reburied at a location where future developments will not occur and as close as possible to their original location. This will take place in accordance with Requirement 26 “*Stone artefact deposition and storage*” in the Code of Practice. A site card will be submitted to AHIMS to record the relocation area and the previous AHIMS site status for WQ1 must be updated to ‘destroyed’.

#### 5.3.2.1 Artefact burial

After salvage operations, an artefact relocation area will be determined through consultation between the proponent and the RAPs. The relocation area will not be impacted by project activities. The relocation area will be registered as a site with the AHIMS register and will be demarcated by an exclusion zone such as fencing. RAPs will be present during the artefact relocation.

## 5.4 PROTOCOL FOR UNANTICIPATED FINDS

An Aboriginal artefact is anything which is the result of past Aboriginal activity. This includes stone (artefacts, rock engravings etc.), plant (culturally scarred trees) and animal (if showing signs of modification, i.e. smoothing, use). Human bone (skeletal) remains may also be uncovered while onsite.

Cultural heritage significance is assessed by the Aboriginal community and is typically based on traditional and contemporary lore, spiritual values, and oral history, and may also consider scientific and educational value.

Protocol to be followed in the event that previously unrecorded or unanticipated Aboriginal object(s) are encountered at the project area or any offset locations associated with the project:

1. If any Aboriginal object is discovered and/or harmed in, or under the land, while undertaking the works associated with the project, the proponent must:
  - a. Not further harm the object
  - b. Immediately cease all work at the location
  - c. Secure the area by cordoning off the site with a 10 m buffer, to avoid further harm to the Aboriginal object
  - d. Notify Heritage NSW as soon as practical on 131 555, providing any details of the Aboriginal object and its location
  - e. Not recommence any work at the location unless authorised in writing by Heritage NSW.
2. In the event that Aboriginal burials are unexpectedly encountered during the activity, work must stop immediately, the area must be secured to prevent unauthorised access and NSW Police and Heritage NSW contacted (see **Section 5.5** for further details)

3. Cooperate with the appropriate authorities and relevant Aboriginal community representatives to facilitate:
  - a. The recording and assessment of the find(s)
  - b. The fulfilment of any legal constraints arising from the find(s), including complying with Heritage NSW directions
  - c. Updating this Plan, including consultation with RAPs and the assessment of the significance of the find(s).

Where the find(s) are determined to be Aboriginal object(s), recommencement of work in the area of the find(s) can only occur once the updated Plan for the project has been endorsed by the Secretary (or their delegate), or the Secretary is satisfied that measures to be implemented in respect of the Aboriginal object or Aboriginal place and makes a written direction in that regard.

## **5.5 HUMAN SKELETAL REMAINS PROTOCOL**

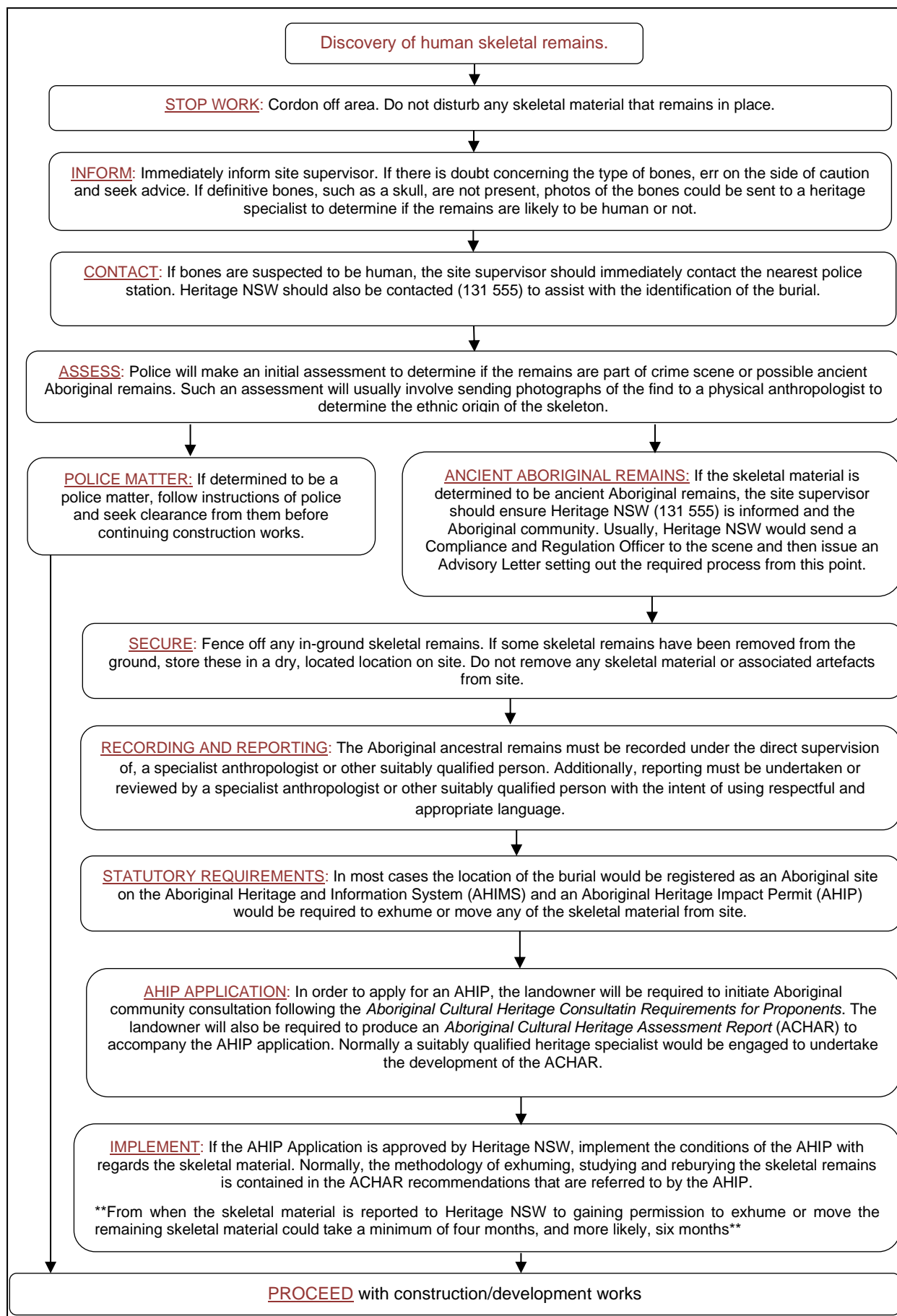
**Figure 5-1** outlines the protocol to be consulted in the event of human remains being discovered during the project.

## **5.6 ACTIVITIES OUTSIDE CURRENT APPROVAL AREAS**

Any proposed works outside the current approval area resulting in vegetation clearing or ground surface disturbance will require heritage assessment involving a suitably qualified archaeologist and RAPs (if required)

Heritage assessment methodology to be determined by the archaeologist, following the *Due Diligence Code of Practice for the Protection of Aboriginal Objects in NSW* and/or the *Code of Practice for Archaeological Investigation of Aboriginal Objects in New South Wales*. Results of the Due Diligence assessment will determine whether further investigation and/or community consultation is required. Post operations management

The Rehabilitation Management Plan for the project will include provisions for the long-term conservation of all remaining Aboriginal sites at the end of the project, including any sites created by artefact reburial.

**Figure 5-1: Human skeletal remains protocol.**

## 6 ROLES, RESPONSIBILITIES AND TIMEFRAMES

The roles, responsibilities and timeframes regarding this Plan are outlined in **Table 6-1**.

**Table 6-1. Roles responsibilities and timeframes.**

Title	Organisation	Roles and Responsibilities	Timeframe	Development Consent Condition
Quarry Manager	Walker Quarries	Protect Aboriginal sites and places outside the approved disturbance area from project related impacts.	Ongoing	21
Quarry Manager	Walker Quarries	Manage the potential discovery of human remains over the life of the project.	Ongoing	22
Quarry Manager	Walker Quarries	Manage the potential discovery new Aboriginal objects over the life of the project.	Ongoing	23 and 23A
Quarry Manager	Walker Quarries	Manage recording of Aboriginal objects or places over the life of the project.	Ongoing	23 B
Quarry Manager, qualified heritage consultant	Walker Quarries, OzArk	Preparation of an ACHMP by a qualified and experienced person.	Before project work commences	23 C a)
Quarry Manager, qualified heritage consultant	Walker Quarries, OzArk	ACHMP be prepared with BCD and RAPs.	Before project work commences	23 C b)
Quarry Manager	Walker Quarries	Comply with the conditions of consent.	Ongoing	23 C c) (i)
Quarry Manager	Walker Quarries	Aboriginal cultural heritage inductions for all workers.	Ongoing	23 C c) (ii)
Quarry Manager	Walker Quarries	Protect, monitor and manage identified Aboriginal sites and places.	Ongoing	23 C c) (iii)
Quarry Manager	Walker Quarries	Protect Aboriginal sites and places outside the approved disturbance area from project related impacts.	Ongoing	23 C c) (iv)
Quarry Manager	Walker Quarries	Manage the potential discovery of human remains or new Aboriginal objects over the life of the project.	Ongoing	23 C c) (v)
Quarry Manager	Walker Quarries	Maintain and manage access for Aboriginal stakeholders to Aboriginal site or places outside approved disturbance area.	Ongoing	23 C c) (vi)
Quarry Manager	Walker Quarries	Care, control and storage of artefacts salvaged on site, including. AHIMS Site #45-1-2802.	Ongoing	23 C d)
Quarry Manager	Walker Quarries	Work not to commence until ACHMP endorsed by BCD Secretary.	Before project work commences	23 D.



---

Quarry Manager	Walker Quarries	Implementation of the ACHMP.	Ongoing	23 E.
----------------	-----------------	------------------------------	---------	-------

## REFERENCES

---

- |             |   |
|-------------|---|
| DECCW 2010  | Department of Environment, Climate Change and Water, Sydney (now Heritage NSW). 2010. <i>Code of Practice for Archaeological Investigation of Aboriginal Objects in New South Wales</i> .   |
| DECCW 2010b | Department of Environment, Climate Change and Water, Sydney (now Heritage NSW). 2010. <i>Aboriginal Cultural Heritage Consultation Requirements for Proponents</i> .  |
| DECCW 2010c | Department of Environment, Climate Change and Water, Sydney (now Heritage NSW).. 2010. <i>Due Diligence Code of Practice for the Protection of Aboriginal Objects in NSW</i> . Department of Environment, Climate Change and Water, Sydney. |
| OzArk 2019  | OzArk 2019. <i>Aboriginal and Historic Cultural Heritage Assessment Report: Wallerawang Quarry Extension Project</i> . June 2019. Report to Umwelt (Australia) on behalf of Walker Quarries.  |
| Silcox 2000 | Silcox, R. <i>Archaeological Assessment for a Proposed Hardrock Quarry, Wallerawang</i> . Report to Pacrim Environmental Pty Ltd.   |

## APPENDIX 1: AUTHORS' CURRICULUM VITAE

### DR ALYCE CAMERON

PhD B Arts (Hons)

#### Senior Archaeologist



Alyce has over ten years' experience as an archaeologist, and a PhD in archaeology and palaeoanthropology from the Australian National University. She has demonstrated experience in completing field surveys in remote locations, working with Traditional Owners and reporting on complex and large-scale projects. Alyce has supervised and coordinated teams in the field, and produced cultural heritage management plans. She has liaised with Aboriginal groups and clients to achieve positive outcomes.

#### PROFESSIONAL EXPERIENCE

2019	TransGrid: Line 948 #44-2-0172 ACHAR and AHIP application. Line 22 and Line 25/26 due diligence assessments. Line 993 due diligence assessment. Line 948/94X due diligence assessment.
2019	Archaeological salvage and research program of a site at a solar farm, Parkes, GRS Australia.
2019	Archaeological assessment and reporting, 90 km pipeline project, Blayney, Bathurst and Portland, Blakely's Environmental.
2019	Historic archaeological impact assessment report, Old Dubbo Gaol, 3-D Projects.
2019	Archaeological assessment and reporting of a Special Activation Precinct, Parkes, WSP.
2018	Archaeological assessment and reporting: Line 96L Lismore to Tenterfield, TransGrid; housing subdivision, Thurgoons, Blueprint Planning; proposed solar farm, Narrandera, SLR Consulting; historic mines, Copeland and Coneac, Barrington Tops, Legacy Mines Project, NSW Department of Planning & Environment.
2009-2014	Archaeological assessment for projects in South-west Queensland relating to power, water and gas infrastructure. Conducted cultural heritage inductions. Origin Energy and Santos. Archaeological assessment for mining projects in the Pilbara, Western Australia. BHP Billiton. Archaeological assessment and writing of Cultural Heritage Management Plans for projects throughout Melbourne and South-east Victoria. VicRoads, Parks Victoria, various Local Councils.

#### SELECTION OF SCIENTIFIC PAPERS AND PUBLICATIONS

Creagh, D. and Cameron, A. 2017. Estimating the Post-Mortem Interval of skeletonized remains: The use of Infrared spectroscopy and Raman spectro-microscopy. *Radiation Physics and Chemistry*, 137: 225-229. Cameron, A. and Oxenham, M. 2012. Disarticulation sequences and scattering patterns in temperate southeastern Australia. *Australian Journal of Forensic Sciences*, 44(2): 197-211.

Australian Society for Human Biology 2017 Conference; Ballarat, Victoria (2017): Presented the paper "Crimes scavengers commit: implications of scavenging on taphonomy and the post-mortem interval".

Australian Society for Human Biology 2014 Conference; Adelaide, South Australia (2014): Presented the paper "Estimating the Post Mortem Interval of skeletonized remains: Infra-red and Raman spectrometry". Australian Society for Human Biology 2010 Conference; Auckland, NZ (2010): Presented the paper "A Forensic Study of Disarticulation, Scattering and Scavenging".

Cameron, A. and Oxenham, M. 2012. Disarticulation sequences and scattering patterns in temperate southeastern Australia. *Australian Journal of Forensic Sciences*, 44(2): 197-211.



**OzArk**  
Environment & Heritage

145 Wingewarra St  
(PO Box 2069)  
Dubbo NSW 2830

Phone: (02) 6882 0118

Fax: (02) 6882 0630

enquiry@ozarkehm.com.au

www.ozarkehm.com.au

## OzArk Environment &amp; Heritage

## EDUCATION

2011-2017	Doctor of Philosophy, Australian National University, Canberra
2008	Bachelor of Arts (Honours), Australian National University, Canberra
2005-2007	Bachelor of Arts, Australian National University, Canberra

## WORK HISTORY

2018 – present	<b>OzArk Environment &amp; Heritage, Archaeologist</b> <ul style="list-style-type: none"> <li>Report writing: Historic archaeological reports, Aboriginal heritage reports, Aboriginal Cultural Heritage Assessment Reports</li> <li>Plan and undertake excavations and assessments for large- and small-scale development projects, small local projects, and remote projects</li> <li>Liaise with diverse client base, community stakeholders, OEH Cultural Heritage Unit and EPRD, Aboriginal community consultation, external authorities, contractors and the general public</li> <li>Develop and maintain a GIS database using QGIS and ArcGIS</li> <li>Archival recording including photography, report writing and collation in archival quality materials</li> <li>Production of Statement of Heritage Impact (SoHI) reports and historical archaeological research</li> <li>Post-excavation artefact processing, cataloguing and analysis</li> </ul>
2015 2011-2013	<b>Australian National University, lecturer, assistant teacher</b> <ul style="list-style-type: none"> <li>Provide lectures, fieldwork and laboratories for undergraduate and post-graduate students.</li> <li>Assessed reports and graded items</li> <li>Supervised and taught students during excavations and surveys</li> <li>Preparing manuscripts for publication</li> </ul>
2011-2014	<b>Heritage Consulting Australia, Project archaeologist and cultural heritage induction trainer</b> <ul style="list-style-type: none"> <li>Conduct field surveys for cultural heritage in rural Queensland</li> <li>Present Cultural Heritage Inductions on behalf of Heritage Consulting Australia for Origin Energy and contractors</li> </ul>
2010-2011	<b>Ironbark Heritage and Environment, Archaeologist</b> <ul style="list-style-type: none"> <li>Conduct field surveys within small teams over large areas of the Pilbara, Western Australia</li> <li>Statistical analysis of data</li> <li>GIS skills</li> </ul>
2009-2010	<b>Dr Vincent Clark &amp; Associates, Project Manager and Cultural heritage Advisor; Archaeologist</b> <ul style="list-style-type: none"> <li>Supervised projects and produced reports within the context of legislation</li> <li>Supervised and coordinated teams of full-time and casual staff during field work</li> <li>Production of cultural heritage management plans, archaeological reports and due diligence assessments</li> <li>Liaised with Aboriginal groups and clients</li> <li>Conduct database searches and submit site cards</li> </ul>

## LICENCES AND TRAINING

WH&S Induction Training for Construction Work – General Course
4WD training and defensive driver training
Working near tracks (railways)



## HARRISON ROCHFORD

M. PHILOSOPHY (ARTS & SOCIAL SCIENCES),

B LIBERAL STUDIES (ADVANCED) (PSYCHOLOGY/ANCIENT HISTORY)(HONS)

### Heritage Officer



**Harrison** is a recent Masters graduate with a focus on historic heritage. Harrison combines his research knowledge with practical experience focusing on historic heritage. He has extensive experience in in-depth research into a variety of historical learnings, including ancient Greece. Harrison also assists the archaeologists with Aboriginal heritage impact assessments and he uses his extensive editorial experience to assist with editing of reports.

#### SELECT OZARK PROJECTS

2019	Kamilaroi Highway — Turrawan to Baan Baa road rehabilitation, Heritage Officer. Assist with letter report production.
2019	Narrabri Shire Council Aboriginal Cultural Heritage Report — Original research, community consultation and report production
2019	Broken Hill North Strategic Historic Heritage Management Plan — Developing heritage legislation compliance and long-term heritage management strategy.
2019	Taronga Western Plains Zoo — Aboriginal Cultural Heritage Assessment Report (ACHAR) and Aboriginal Heritage Impact Permit (AHIP) application.
2020	Northparkes Mine — multiple Due Diligence inspections and assessments for proposed exploration.

#### EDUCATION

2015 - 2018	Masters Philosophy (Arts and Social Sciences), University of Sydney
2014	Bachelor of Liberal Studies (Advanced) (Psychology/Ancient History) (Hons), University of Sydney

#### WORK HISTORY

2013-2018 (Part-time)	<b>Department of Classics and Ancient History, University of Sydney</b> <b>Research Assistant</b> <ul style="list-style-type: none"> <li>Researching and compiling bibliographies and reports on a broad range of historical topics</li> <li>Editing and formatting academic works to meet strict publication guidelines</li> <li>Developing and distributing promotional material for University of Sydney events in Classics and Ancient History</li> </ul>
2018 (Part-time)	<b>Indigenous Tutoring Assistance Scheme, University of Sydney</b> <b>Academic mentor</b> <ul style="list-style-type: none"> <li>Providing specialised assistance for students taking Ancient History subjects</li> <li>Transforming and adapting existing learning materials to ensure consistent engagement and achievement throughout the course</li> <li>Student welfare</li> </ul>
2016-2017 (Part-time)	<b>Department of Classics and Ancient History, University of Sydney</b> <b>Sessional Teaching Staff</b>

**OzArk**  
**Environment & Heritage**

145 Wingewarra St  
 (PO Box 2069)  
 Dubbo NSW 2830  
 Phone: (02) 6882 0118  
 Fax: (02) 6882 0630  
[enquiry@ozarkehm.com.au](mailto:enquiry@ozarkehm.com.au)  
[www.ozarkehm.com.au](http://www.ozarkehm.com.au)

## OzArk Environment &amp; Heritage

	<ul style="list-style-type: none"> <li>Producing and delivering specific education content to first- and second-year undergraduate students</li> <li>Assist academics in developing and delivering consistent pedagogical approaches</li> <li>Responding and adapting to student queries and feedback</li> </ul>
--	--

**TRAINING**


2019	White Card Certificate
------	------------------------

## APPENDIX 2: STAKEHOLDER CONSULTATION LOG AND CORRESPONDENCE

### Aboriginal Community Consultation Log

Date	Organisation	Comment	Method
17.3.20	Yurrandaali Cultural Services	Rebecca Hardman (RH) sent copy of the ACHMP Report for review. Feedback closes 31.3.20	email
17.3.20	Barraby Cultural Services	RH sent copy of the ACHMP Report for review. Feedback closes 31.3.20	email
17.3.20	Murra Bidgee Mullangari Aboriginal Corporation	RH sent copy of the ACHMP Report for review. Feedback closes 31.3.20	email
17.3.20	MINGAAN WIRADJURI ABORIGINAL CORPORATION	RH sent copy of the ACHMP Report for review. Feedback closes 31.3.20	email
17.3.20	Merrigarn	RH sent copy of the ACHMP Report for review. Feedback closes 31.3.20	email
17.3.20	Muragadi Heritage Indigenous Corporation	RH sent copy of the ACHMP Report for review. Feedback closes 31.3.20	email
17.3.20	Yulay Cultural Services	RH sent copy of the ACHMP Report for review. Feedback closes 31.3.20	email
17.3.20	Warrabinga Native Title Claimants Aboriginal Corporation	RH sent copy of the ACHMP Report for review. Feedback closes 31.3.20	email
17.3.20	Gundungurra Tribal Council Aboriginal Corporation	RH sent copy of the ACHMP Report for review. Feedback closes 31.3.20	email
17.3.20	Bathurst LALC	RH sent copy of the ACHMP Report for review. Feedback closes 31.3.20	email
17.3.20	Merrigarn	RTS	RTS
17.3.20	Merrigarn	RH re sent to alternative email	email
3.4.20	Barraby Cultural Services	RH received email - received thanks	email

## Example letter

	<b>OzArk Environment &amp; Heritage</b> Dubbo T: 02 6882 0118 Queanbeyan enquiry@ozarkelm.com.au Newcastle www.ozarkelm.com.au	ABN 59 104 582 354 145 Wingewarra St PO Box 2069 DUBBO NSW 2830
---	---	--

17<sup>th</sup> March 2020

Members  
 Bathurst Local Aboriginal Land Council  
 c/- [REDACTED]  
 149 Russell St  
 Bathurst NSW 2795  
 bathlalc2@bigpond.com

***ABORIGINAL CULTURAL HERITAGE MANAGEMENT PLAN  
 WALLERAWANG QUARRY MODIFICATION 3 PROJECT.***

---

Dear Members,


In June 2019 OzArk completed the Aboriginal Cultural Heritage Assessment Report (ACHAR) for the Wallerawang Quarry Extension Project contained within Mining Lease (ML) 1633. The ACHAR was to inform the application for Modification 3 to DA 344-11-2001 that proposed an extension to the Wallerawang Quarry and ML 1633.

The OzArk assessment indicated that the extension would result in harm to one Aboriginal site: AHIMS #45-1-2802 (WQ1), a site containing 16 artefacts predominantly within extensive exposures in the southern portion of the site with further artefacts recorded along a disused vehicle track in the western portion of the site.

DA 344-11-2001 Modification 3 has now been consented and an Aboriginal Cultural Heritage Management Plan (ACHMP) has been developed to manage Aboriginal cultural heritage at the Wallerawang Quarry. This plan sets out the methodology for the salvage of site WQ1, as well as the procedures for unanticipated finds elsewhere at the Wallerawang Quarry.

We are sending you this draft version of the ACHMP for your information. Should you have any comments on this ACHMP, please contact us before **COB Tuesday 31<sup>st</sup> March 2020** so that we may consider your suggestions before the plan is submitted to the Department of Planning, Industry and Environment for approval.

With thanks,

  
 Rebecca Hardman  
 Community Liaison & Administration

## APPENDIX 3: BCD CONSULTATION



Planning,  
Industry &  
Environment

Our ref: DOC20/340369  
Your Ref: DA344-11-2001

Harrison Rochford  
Heritage Officer  
OzArk Environment and Heritage  
[harrison@ozarkehm.com.au](mailto:harrison@ozarkehm.com.au)

Dear Harrison

### **Wallerawang Quarry Modification 3 Project – Aboriginal Cultural Heritage Management Plan**

Thank you for your email dated 14 April 2020 to the Biodiversity and Conservation Division (BCD) of the Department of Planning, Industry and Environment inviting comments on the Aboriginal Cultural Heritage Management Plan (ACHMP) for the Wallerawang Quarry Modification 3 project.

It is noted that section 5.4 of the ACHMP notes that both BCD and NSW Police must be contacted if Aboriginal burials are unexpectedly encountered. However, Figure 5.1 states that only the police will be contacted.

It is recommended that the protocol proposal in Figure 5.1 for managing the discovery of human remains be amended to state that the Biodiversity and Conservation Division (BCD) is contacted in addition to NSW Police to assist in identifying if the skeletal remains are that of a traditional Aboriginal burial.

BCD has no further comments to make on the ACHMP.

If you require any further information regarding this matter, please contact Phil Purcell, Archaeologist, via [phil.purcell@environment.nsw.gov.au](mailto:phil.purcell@environment.nsw.gov.au) or (02) 6883 5341.

Yours sincerely

**Renee Shepherd**  
**Acting Senior Team Leader Planning North West – ACH and Special Projects**  
**Biodiversity and Conservation Division**

5 May 2020

cc: Matthew Sprott, Director Resource Assessments, P&A Group  
Colin Phillips, Team Leader, Minerals Quarry Assessments, P&A Group