

Appendix 7

Landscape Planting Plan

(Total No. of pages including blank pages = 4)

Note: A colour version of this Appendix is available on the digital version of this document

This page has intentionally been left blank

WALLERAWANG QUARRY
LANDSCAPE PLANTING PLAN

Purpose

This Landscape Planting Plan has been prepared to satisfy Condition 2.48 of DA 344-11-2001 which requires:
The Applicant shall install bunds at strategic locations around the development site, and plant additional trees along the boundary of the development site to the satisfaction of the Director-General in order to screen the development, as far as practicable, from external viewers.

Scope

- The LPP has been prepared to:
- identify strategic planting zones;
 - define objectives for each planting zone;
 - identify the target vegetation types and species (where applicable) to be used in landscape planting; and
 - outline planting procedures and schedules.

Strategic Planting Zones and Objectives

- Two strategic planting zones have been identified (see Figure L1).
External Highway Batters
- Identified as Areas A, B and C on Figure L1, these exposed surfaces were created as a result of the construction of the Quarry entrance and are visible to traffic on the Great Western highway.
 - The objective of landscape planting within these areas is to establish a shrubby woodland / forest vegetation community.

Internal Dam Walls

- Identified as Areas E and F, these surfaces form the outer walls or catchment zones of Quarry dams. These exposed surface may be visible to traffic on the Great Western Highway
- To ensure the structural integrity of the dams, trees and deep rooted vegetation will be avoided.
- The objective of landscape planting within these areas will be to establish a sustainable and perennial cover of grass (>70% coverage).

Vegetation Types and Species¹

External Highway Batters

Trees	Shrubs	Grasses
Ribbon Gum	Provenance Wattyl (acacia) and hakea species	Wallaby Grass
Mountain Gum		Kangaroo Grass
Snow Gum		Snow Grass
Black Sally		

Internal Dam Walls

Grasses		Shrubs
Initial cover	Perennial	Provenance Wattyl (acacia) and hakea species
Sterile exotic pasture or cover crop species	Wallaby Grass	
	Kangaroo Grass	
	Snow Grass	

Planting Procedures

- Planting will be completed by a local horticultural business or consultancy.
Specific procedures will be implemented by the responsible party, however, the following will be enforced by Walker Quarries.
- With the exception of sterile exotic and cover crop species, seed and tube stock will have provenance on or adjoining the Quarry.
 - Tube stock planting will be undertaken over two planting periods (to allow for a review of planting success and avoid over competition).
 - Tube stock will be planted at density of no less than 1 tree / 5m².
 - Tube stock will be provided with biodegradable protective sleeves.

Planting Schedules

The chart below provides the proposed planting / seeding schedule.

Note 1: Subject to availability of seed stock / provenance tubestock

Schedule	2017				2018			
	Mar	June	Sep	Dec	Mar	June	Sep	Dec
External Highway Batters								
Area A								
Area B								
Area C								
Internal Dam Walls								
Area D								
Area E								
Monitoring (and In-fill Planting / Seeding As Required)								
Areas A/B/C								
Areas D/E								

REV	DATE	BY	APP.	REVISION DETAILS	DRAWING STATUS		
0	27/09/16	AI		Original	DESIGN BY:	N/A	
1	22/03/17	AI	DM	Following Consultation with Revegetation Contractor	DRAWN BY	N/A	
					FINAL APPROVAL	N/A	

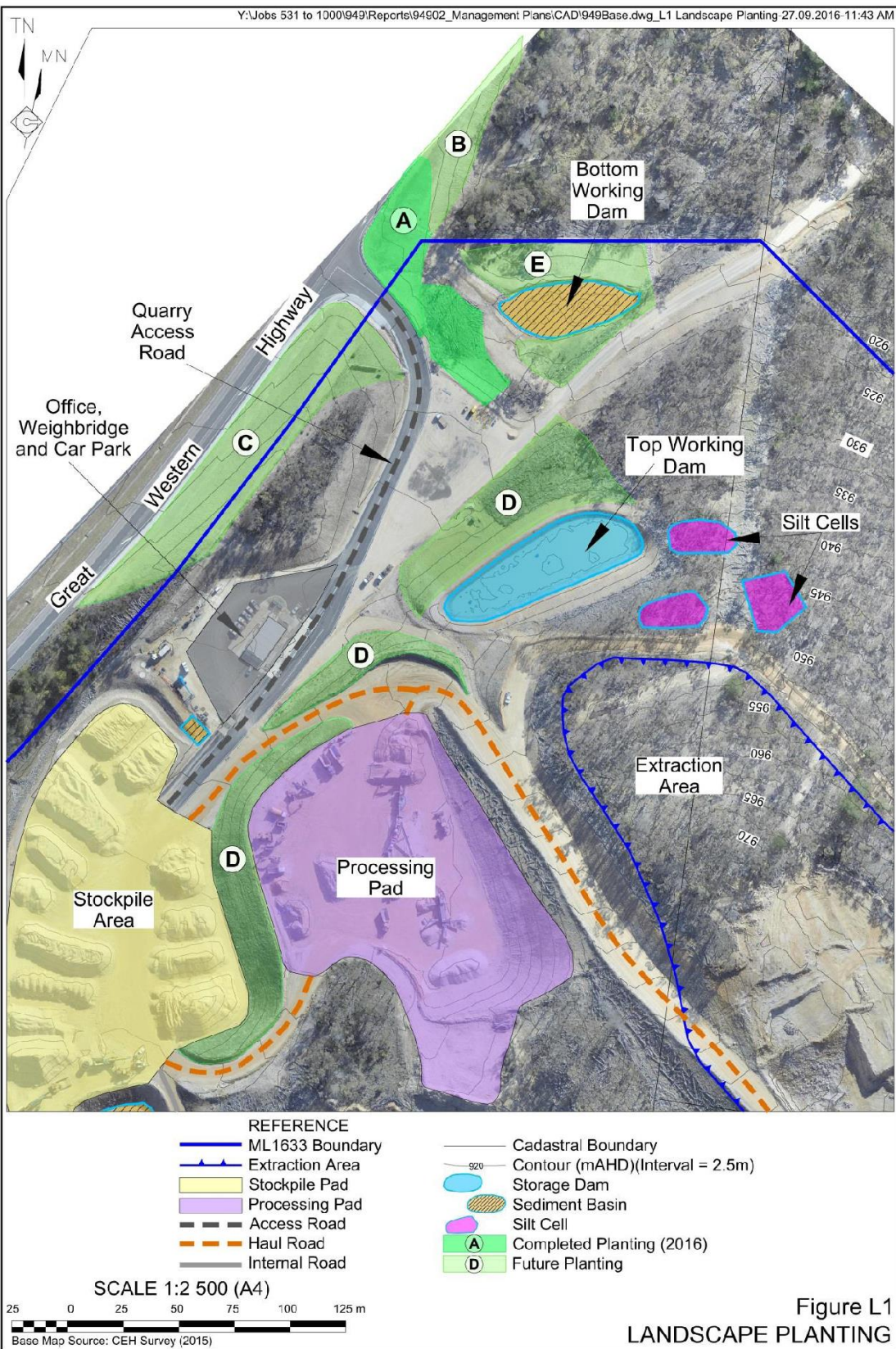


Figure L1
LANDSCAPE PLANTING

This page has intentionally been left blank

This page has intentionally been left blank