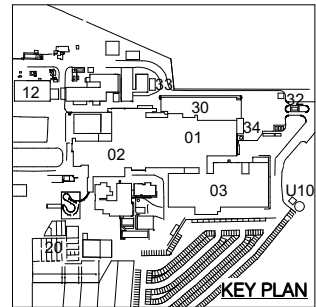


© WILEY & CO PTY LTD
ABN 40 010 604 869
This document is the property of Wiley & Co Pty Ltd and is copyright. The subject matter of it is confidential. Do not use, reproduce, copy or disclose except with and only to the extent of the prior written consent of Wiley & Co Pty Ltd. Persons receiving this document are responsible for restricting disclosure as stated above.



LEGEND

- Stage 1
- Stage 2
- Stage 3
- Stage 4
- Stage 5
- Demolished or Relocated

STAGE 2 REFRIGERATION

- As previously designed for Stage 2
- Possible new units for Stage 2

General Notes:
AREA OF DA MODIFICATION

03/09/18	7	ISSUE FOR DA MOD	DT
17/08/18	6	AUTOMATIC PALLETISERS UPDATED	DJM
14/08/18	5	GENERAL REVISION	DJM
31/07/18	4	GENERAL REVISION	JNM
27/07/18	3	REFRIGERATION SCOPE ADDED	JNM
30/07/18	2	FOR REVISION (BLD LENGTHEN)	DT
14/06/18	1	UPDATED FROM W14003	JNM
Date	Issue	Amendment	Init

Brisbane Kuala Lumpur Melbourne Sydney Toowoomba
www.wiley.com.au
connect@wiley.com.au
1300 385 988

WILEY



TEYS AUSTRALIA - STAGE 2
COLD MEAT PROJECT
WAGGA WAGGA, NSW
Drawing Title
PHASE 2 - OVERALL
PROJECT STAGING GUIDE

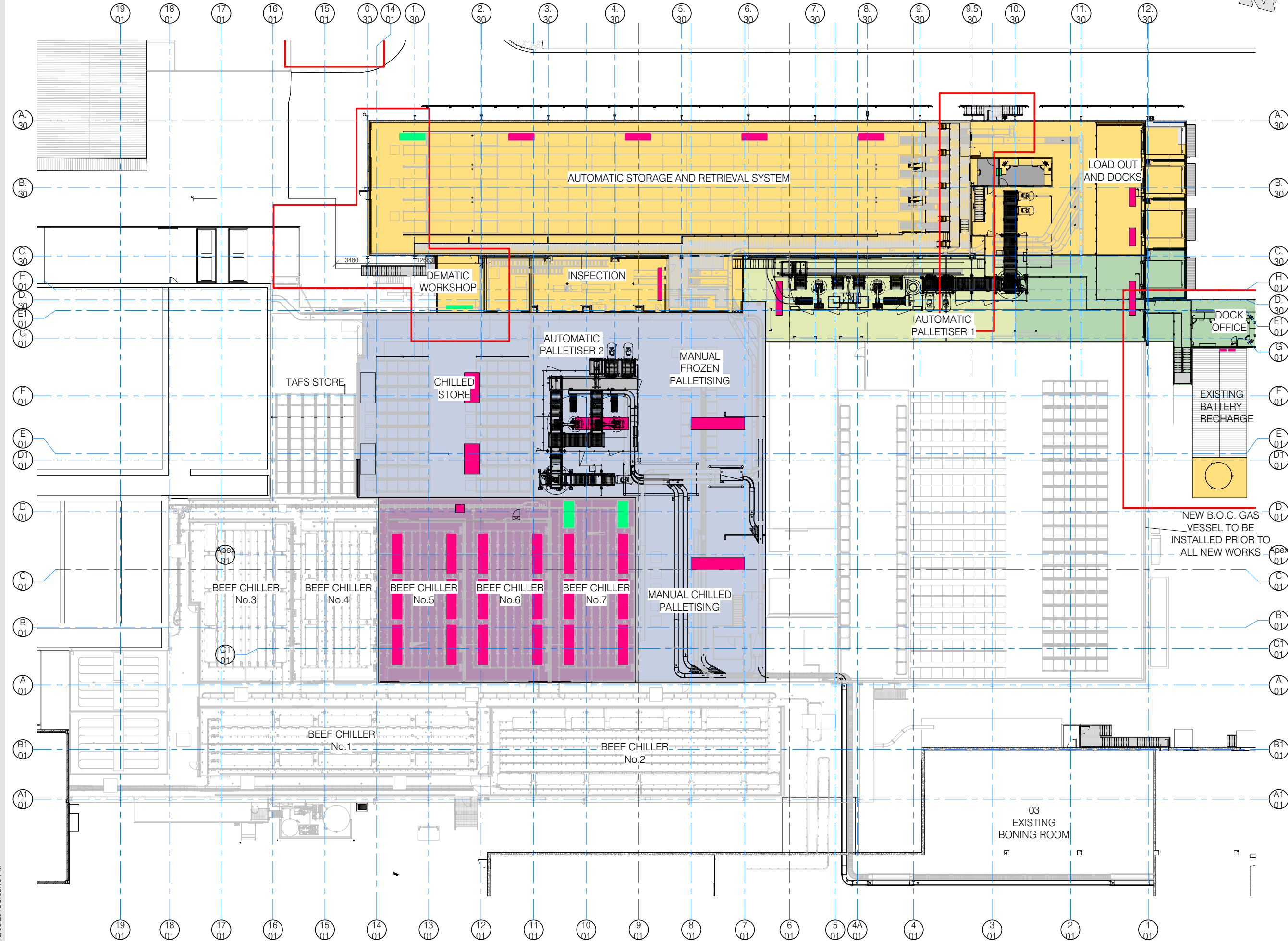
Scale A1 = 1:200 (A3 = 1:400) 0 2000 4000

Drawn JNM Date JUNE 2018

Project No. W21206 Bldg No. 01

Drawing No. Issue

00Q100- 7
PRELIMINARY



ORIGINAL IN COLOUR

ADVICE ♦ DESIGN ♦ ENGINEERING ♦ CONSTRUCTION

Plot Date : 3/09/2018 3:00:19 PM

Cad File No : D:\My Documents D\W21206-01-Arch_ben.mckay@wiley.com.au.rvt