

COWAL GOLD OPERATIONS PROCESSING RATE MODIFICATION

ADDENDUM TO THE BIODIVERSITY ASSESSMENT REPORT
AND BIODIVERSITY OFFSET STRATEGY



PREPARED BY
RESOURCE STRATEGIES

July 2018
Project No. HAL-16-41
Document No. 00925550

COWAL GOLD OPERATIONS – ADDENDUM TO THE BIODIVERSITY ASSESSMENT REPORT AND BIODIVERSITY OFFSET STRATEGY

Background

Cowal Gold Operations Processing Rate Modification – Response to Submissions (Evolution, 2018a) was submitted to the Department of Planning and Environment (11 June 2018) to address comments received on the *Cowal Gold Operations Processing Rate Modification Environmental Assessment* (Evolution, 2018b).

The *Cowal Gold Operations Processing Rate Modification – Response to Submissions* (Evolution, 2018a) provides further information on the *Cowal Gold Operations Processing Rate Modification Biodiversity Assessment Report and Biodiversity Offset Strategy* (BARBOS) (Resource Strategies, 2018) in response to comments from the Office of Environment and Heritage (11 June 2018).

This addendum to the BARBOS incorporates additional information within the *Gold Operations Processing Rate Modification – Response to Submissions* (Evolution, 2018a) that was not included in the BARBOS.

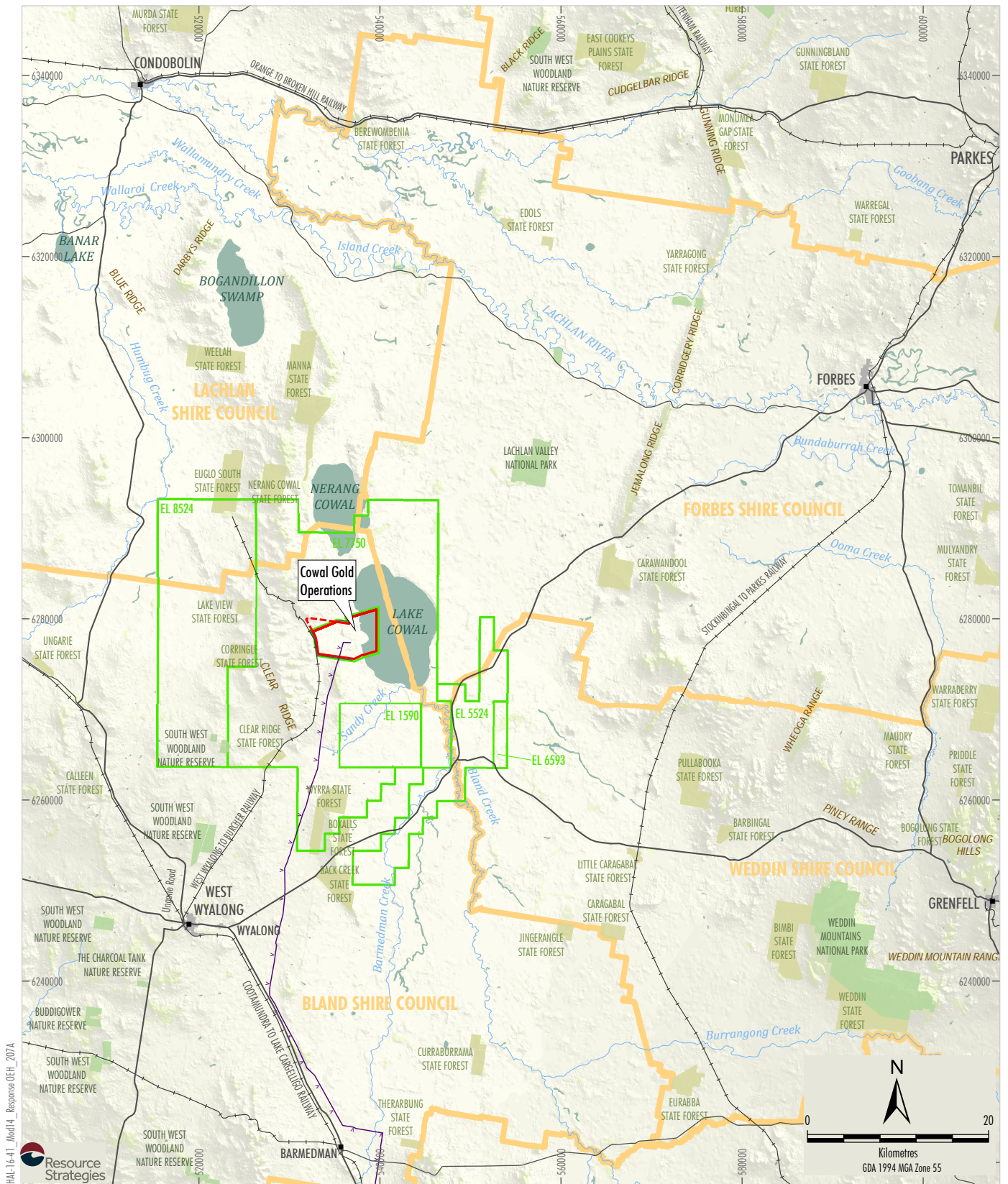
Additional Information

Eight additional figures were developed and included in the *Cowal Gold Operations Processing Rate Modification – Response to Submissions* (Evolution, 2018a), they are as follows:

- Figure 1 – shows the Cowal Gold Operation regional location;
- Figure 2 – shows the modification general arrangement;
- Figure 3 – shows areas not requiring assessment at the mine site;
- Figure 4 – shows areas not requiring assessment at the pipeline;
- Figure 5 – shows Biometric Vegetation Types (BVTs) not requiring offsetting;
- Figure 6 – shows BVTs requiring offsetting at the mine site;
- Figure 7 – shows BVTs requiring offsetting at the pipeline; and
- Figure 8 – shows impacts requiring further consideration at the pipeline.

Table 1 (from the *Cowal Gold Operations Processing Rate Modification – Response to Submissions* [Evolution, 2018a]) provides the measures to avoid and minimise the impacts of the Modification, to be implemented, before, during and after construction, including action, outcome, timing and responsibility. Table 1 also includes the existing management plan that will be updated to include each action.

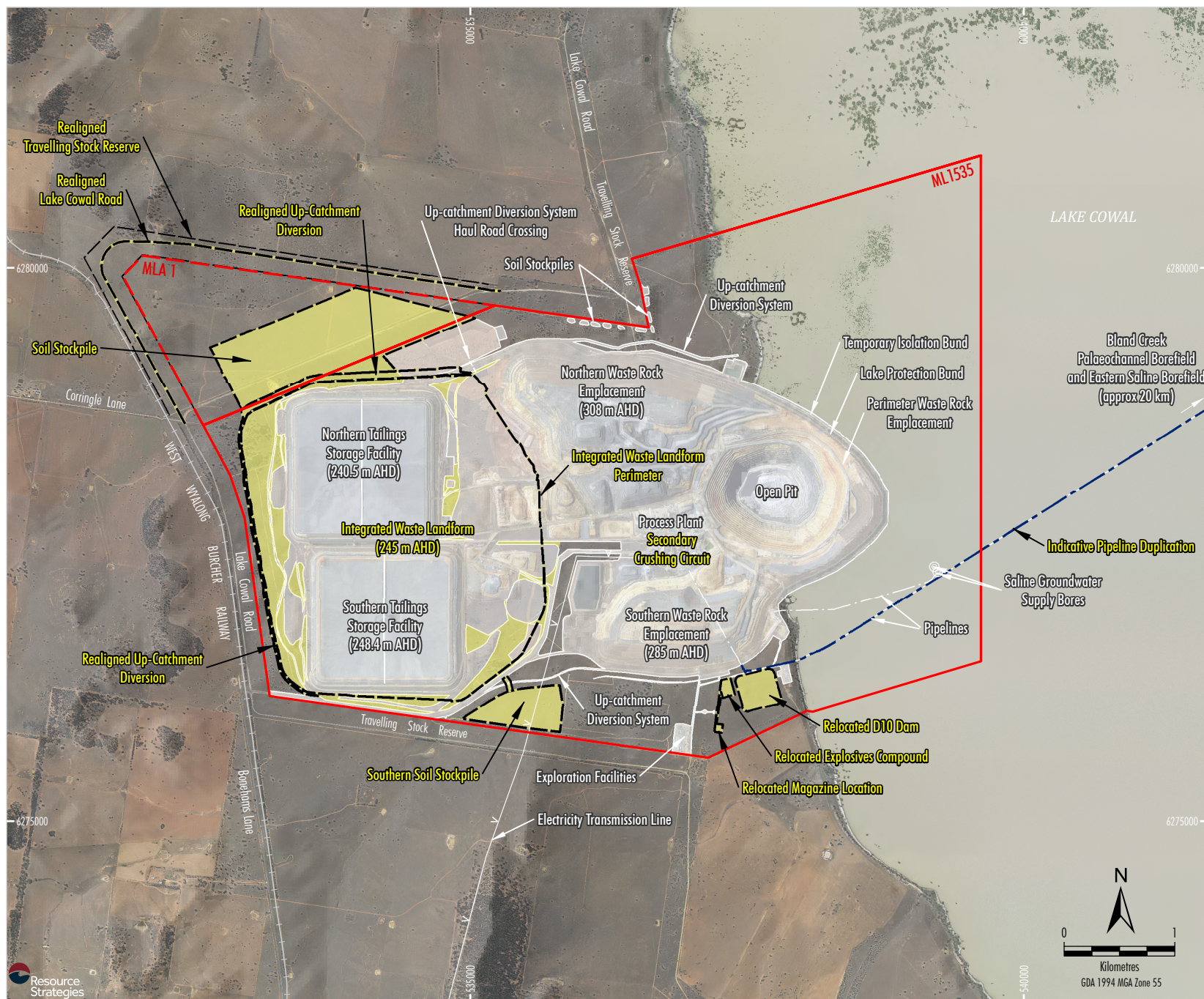
The BioBanking Credit Calculator reports for Offset Areas 3 - 6 are included in Attachment A1 - A4 of this BARBOS addendum.



CGO PROCESSING RATE MODIFICATION

Regional Location

Figure 1



CGO PROCESSING RATE MODIFICATION
Modification General Arrangement



Figure 2



HAL-16-41 Mod 4 Response CEH 201A

- LEGEND**
- Mining Lease Boundary (ML 1535)
 - Mining Lease Application Boundary (MLA 1)
 - Approximate Extent of Approved Surface Development
 - AREAS NOT REQUIRING ASSESSMENT - MINE SITE**
 - Map Units
 - A Plantings
 - B Lake Bed
 - D Cleared

Source: © NSW Department of Finance, Services & Innovation (2017)
Orthophoto: Evolution (Oct 2017)



CGO PROCESSING RATE MODIFICATION
Areas Not Requiring Assessment
- Mine Site

Figure 3



Source: © NSW Department of Finance, Services & Innovation (2017)
 Orthophoto: Evolution (Oct 2017)



CGO PROCESSING RATE MODIFICATION
 Areas Not Requiring Assessment
 - Pipeline

Figure 4



HAL-16-41 Mod 4 Response CEH 203A



LEGEND

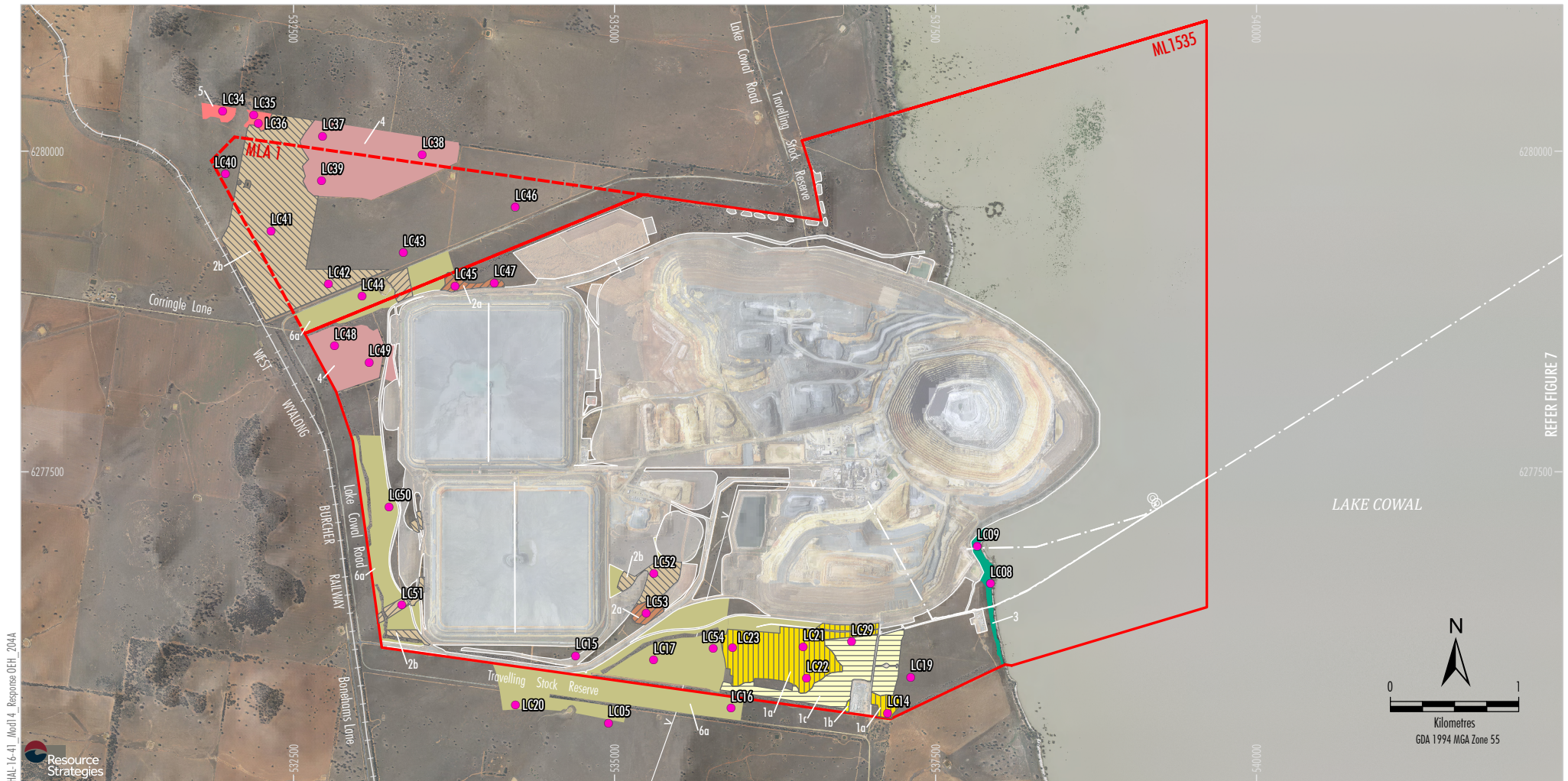
-  Mining Lease Boundary (ML 1535)
-  Mining Lease Application Boundary (MLA 1)
-  Approximate Extent of Approved Surface Development
- BIOMETRIC VEGETATION TYPE NOT REQUIRING OFFSET**
-  Grasslands - Western Slopes Grasslands
-  6b Highly Modified Derived Grasslands (Low Condition) (LA138)

Source: © NSW Department of Finance, Services & Innovation (2017)
Orthophoto: Evolution (Oct 2017)



CGO PROCESSING RATE MODIFICATION
Biometric Vegetation Type Not Requiring Offset

Figure 5



HAL-16-41_Mnd 4_Response CEH_2044



LEGEND

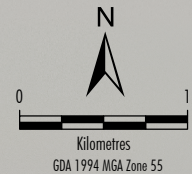
- Mining Lease Boundary (ML 1535)
- Mining Lease Application Boundary (MLA 1)
- Approximate Extent of Approved Surface Development
- FBA Plot

BIOMETRIC VEGETATION TYPE REQUIRING OFFSET - MINE SITE

- 1a Semi-arid Woodlands (Grassy sub-formation) - Riverine Plain Woodlands
- 1b Weeping Myall Open Woodland (Semi Cleared in Moderate Condition) (LA212)
- 1c Weeping Myall Open Woodland (Semi Cleared in Low Condition) (LA212)
- 1c Weeping Myall Open Woodland (Derived Grassland in Low Condition) (LA212)
- Grassy Woodlands - Floodplain Transition Woodlands
- 2a Inland Grey Box - White Cypress Pine Woodland (Semi Cleared in Moderate Condition) (LA152)
- 2b Inland Grey Box - White Cypress Pine Woodland (Derived Grassland in Low Condition) (LA152)
- 3 Forested Wetlands - Inland Riverine Forests
- 3 River Red Gum Forest (Moderate Condition) (LA191)
- Semi-arid Woodlands (Grassy sub-formation) - Northwest Floodplain Woodlands
- 4 Belah Woodland (Low Condition) (LA105)

- 5 Semi Arid Woodland (Shrubby sub-formation) - Inland Rocky Hill Woodlands
- 5 Dwyer's Red Gum - White Cypress Pine - Currawang Woodland (Moderate Condition) (LA144)
- 6a Grasslands - Western Slopes Grasslands
- 6a Highly Modified Derived Grasslands (Moderate Condition) (LA138)
- Threatened Ecological Communities
- Grey Box Woodland EEC (BC Act and EPBC Act)
- Grey Box Woodland EEC (BC Act)
- Weeping Myall Woodland EEC (BC Act and EPBC Act)
- Weeping Myall Woodland EEC (BC Act)

Source: © NSW Department of Finance, Services & Innovation (2017)
Orthophoto: Evolution (Oct 2017)



CGO PROCESSING RATE MODIFICATION
Biometric Vegetation Type Requiring Offset
- Mine Site

Figure 6



HAL-16-41_Mod4_Response CEH_205A



LEGEND

- Approximate Extent of Approved Surface Development
- FBA Plot

BIOMETRIC VEGETATION TYPE REQUIRING OFFSET - PIPELINE

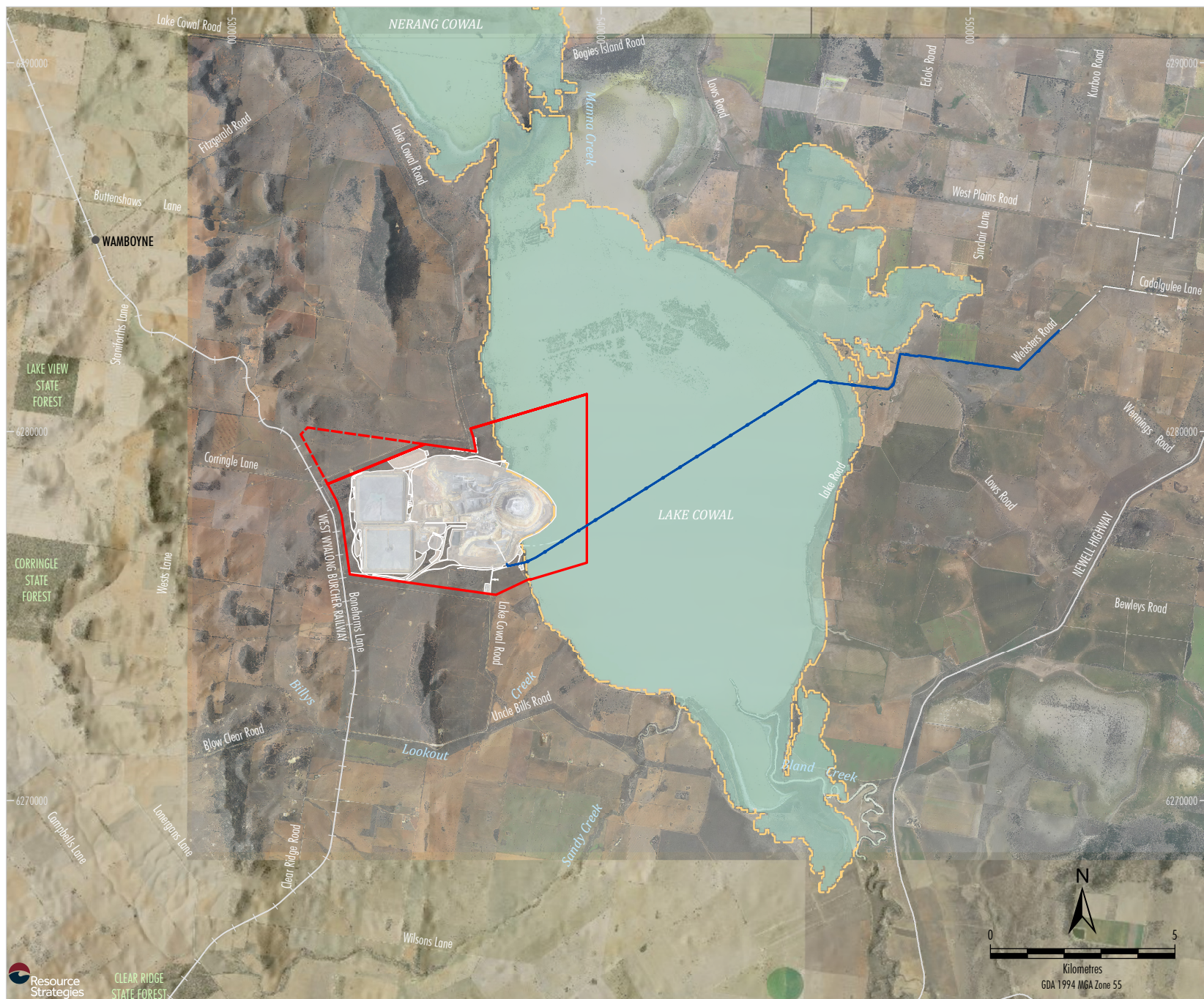
- Semi-arid Woodlands (Grassy sub-formation) - Riverine Plain Woodlands
- Weeping Myall Open Woodland (Semi Cleared in Moderate Condition) (LA212)
- Weeping Myall Open Woodland (Semi Cleared in Low Condition) (LA212)
- Weeping Myall Open Woodland (Derived Grassland in Low Condition) (LA212)
- Forested Wetlands - Inland Riverine Forests
- River Red Gum Forest (Moderate Condition) (LA191)
- Threatened Ecological Communities
- Weeping Myall Woodland EEC (BC Act and EPBC Act)
- Weeping Myall Woodland EEC (BC Act)

Source: © NSW Department of Finance, Services & Innovation (2017)
Orthophoto: Evolution (Oct 2017)



CGO PROCESSING RATE MODIFICATION
Biometric Vegetation Type Requiring Offset
- Pipeline

Figure 7



- LEGEND**
- Mining Lease Boundary (ML 1535)
 - Mining Lease Application Boundary (MLA 1)
 - Approximate Extent of Approved Surface Development
 - BAR Footprint - Pipeline
 - IMPACTS REQUIRING FURTHER CONSIDERATION - PIPELINE**
 - Wetland in the Directory of Important Wetlands Australia
 - 50 m Buffer of a Wetland in the Directory of Important Wetlands Australia

Source: Evolution (2018); © NSW Department of Planning and Environment (2017); Department of Finance, Services & Innovation (2017); Crown Lands and Water - a Division of the NSW Department of Industry (2013); Office of Environment and Heritage NSW; Australian Government Department of the Environment (2017)
 Orthophoto: Evolution (Oct 2017); Department of Finance, Services & Innovation (2017)



CGO PROCESSING RATE MODIFICATION
Impacts Requiring Further Consideration
- Pipeline

Figure 8

Table 1
Impact Avoidance and Mitigation Measures at the CGO

Action	Outcome	Timing	Responsibility	Management Plan
Revegetation of the post-mine landforms (including waste rock emplacements).	Stable rehabilitated landforms that increase the areas of endemic vegetation.	Ongoing during operations and post-closure.	Evolution	Rehabilitation Management Plan ¹
Rehabilitation of the final void.	Final void surrounds safe (for humans and stray stock).	Ongoing during operations and post-closure.	Evolution	Rehabilitation Management Plan ¹
Rehabilitation of the approved Tailings Storage Facilities (TSF)s.	Stable rehabilitated landforms that increase the areas of endemic vegetation.	Ongoing during operations and post-closure.	Evolution	Rehabilitation Management Plan ¹
Delineation of disturbance area.	Vegetation clearance is minimised.	Before and during construction and operations.	Evolution	Flora and Fauna Management Plan ²
Pre-clearance surveys.	Minimise impact of land clearance on fauna.	Before and during construction and operations.	Evolution	Flora and Fauna Management Plan ²
Fauna management strategies.	Minimise impact of land clearance on fauna.	Before and during construction and operations.	Evolution	Flora and Fauna Management Plan ²
Vegetation clearance procedure.	Minimise impact of land clearance on fauna.	Before and during construction and operations.	Evolution	Flora and Fauna Management Plan ²
Vehicle speed limits and road signage.	Reduce the danger of vehicles to wildlife.	Before and during construction and operations.	Evolution	Flora and Fauna Management Plan ²
Threatened Species Management Protocol.	Minimise impact of land clearance on threatened species.	Before and during construction and operations.	Evolution	Implementation of the Threatened Species Management Protocol ³
Mechanisms to keep fauna away from the TSFs.	Minimise fauna interaction with the TSFs.	Ongoing during operations.	Evolution	Flora and Fauna Management Plan ²
Cyanide destruction process.	Minimise exposure of fauna to cyanide.	Ongoing during operations.	Evolution	Flora and Fauna Management Plan ²
Monitoring of fauna usage of the final void.	Monitoring to detect fauna usage of the final void.	Post-closure.	Evolution	Flora and Fauna Management Plan ²
Monitoring of fauna usage of the TSFs.	Monitoring to detect fauna usage of the TSFs.	Ongoing during operations.	Evolution	Flora and Fauna Management Plan ²
Remnant Vegetation Enhancement.	Enhancement of habitat available to flora and fauna within four Remnant Vegetation Enhancement Areas.	Ongoing during operations.	Evolution	Flora and Fauna Management Plan ²
Protection of Remnant Vegetation within Mining Lease (ML) 1535.	Areas of woodland (Myall Woodland Endangered Ecological Community [EEC]) located near the southern boundary of ML 1535 protected from disturbance during operations.	Ongoing during operations.	Evolution	Flora and Fauna Management Plan ²

Table 1 (Continued)
Impact Avoidance and Mitigation Measures at the CGO

Action	Outcome	Timing	Responsibility	Management Plan
Limiting vehicular access during construction of the pipeline in the CGO Compensatory Wetland.	Potential impacts from vehicles are minimised.	During construction.	Evolution	Compensatory Wetland Management Plan ⁴
Weed management during construction of the pipeline in the CGO Compensatory Wetland.	Weed impacts are minimised.	During construction.	Evolution	Compensatory Wetland Management Plan ⁴
Vehicle hygiene weed measures during construction of the pipeline in the CGO Compensatory Wetland.	Weed impacts are minimised.	During construction.	Evolution	Compensatory Wetland Management Plan ⁴
Monthly monitoring for 12 months following construction of the pipeline in the CGO Compensatory Wetland the following: erosion, sedimentation, slumping and weed establishment.	Impacts on the native vegetation in the CGO Compensatory Wetland are minimised.	During construction.	Evolution	Compensatory Wetland Management Plan ⁴
Dust control.	Dust impacts are minimised.	Ongoing during operations.	Evolution	Air Quality Management Plan ⁵
Noise management.	Noise impacts are minimised.	Ongoing during operations.	Evolution	Flora and Fauna Management Plan ²
Blasting management.	Blasting impacts are minimised.	Ongoing during operations.	Evolution	Flora and Fauna Management Plan ²
Pest (animal and vermin) control.	Animal pest impacts are minimised.	Ongoing during operations.	Evolution	Flora and Fauna Management Plan ²
Weed management.	Weed impacts are minimised.	Ongoing during operations.	Evolution	Flora and Fauna Management Plan ²
Site water management.	Surface water impacts are minimised.	Ongoing during operations.	Evolution	Water Management Plan ⁶
Design – Impact Avoidance.	Vegetation clearance is minimised.	Before construction.	Evolution	Flora and Fauna Management Plan ²
Revegetation of the post-mine landforms.	Mine rehabilitation would include species characteristic of the Grey Box EEC and Weeping Myall Woodlands EEC listed under the EPBC Act.	Ongoing during operations and post-closure.	Evolution	Rehabilitation Management Plan ¹
Vegetation Clearance Protocol - Delineation of disturbance area.	Vegetation clearance is minimised.	Before construction.	Evolution	Flora and Fauna Management Plan ²

Table 1 (Continued)
Impact Avoidance and Mitigation Measures at the CGO

Action	Outcome	Timing	Responsibility	Management Plan
Fencing.	Fencing along the travelling stock reserve (TSR) would exclude livestock from the land between the re-aligned TSR and the proposed stockpile.	Before construction.	Evolution	Flora and Fauna Management Plan ²
Seed Collection.	Seed from species characteristic of the Grey Box EEC and Weeping Myall Woodlands EEC listed under the EPBC Act would be collected.	Before and during construction and operations.	Evolution	Flora and Fauna Management Plan ²
Mechanisms to keep fauna away from the TSFs.	The Integrated Waste Landform would be less conducive to the establishment of wildlife habitats.	During construction and operations.	Evolution	Flora and Fauna Management Plan ²

Source: After Resource Strategies (2018).

¹ Evolution (2017a).

² Evolution (2016).

³ Barrick (2003a).

⁴ Barrick (2003b).

⁵ Evolution (2015).

⁶ Evolution (2017b).

References

Barrick (Cowal) Limited (2003a) *Cowal Gold Project Implementation of the Threatened Species Management Protocol*.

Barrick (Cowal) Limited (2003b) *Cowal Gold Project Compensatory Wetland Management Plan*.

Evolution (2015) *Cowal Gold Project Air Quality Management Plan*.

Evolution (2016) *Cowal Gold Operations Flora and Fauna Management Plan*.

Evolution (2017a) *Cowal Gold Operations Rehabilitation Management Plan*.

Evolution (2017b) *Cowal Gold Operations Water Management Plan*.

Evolution (2018a) *Cowal Gold Operations Processing Rate Modification - Response to Submissions*.

Evolution (2018b) *Cowal Gold Operations Processing Rate Modification Environmental Assessment*.

Resource Strategies (2018) *Cowal Gold Operations Processing Rate Modification Biodiversity Assessment Report and Biodiversity Offset Strategy*. Prepared for Evolution.

ATTACHMENT A1 TO A4
CREDIT REPORT FOR THE PROPOSED OFFSET AREAS

BioBanking credit report



Office of
Environment
& Heritage

This report identifies the number and type of credits required at a BIOBANK SITE

Date of report: 14/05/2018

Time: 2:07:09PM

Calculator version: v4.0

Biobank details

Proposal ID: 0056/2018/4789B

Proposal name: Cowal Gold Mod 14 - Offset 3

Proposal address: 2283 Lake Road Lake Cowal NSW 2671

Proponent name: Evolution Mining (Cowal)

Proponent address: Cowal Gold Operations Lake Cowal Road Lake Cowal NSW 2671

Proponent phone: 0269754749

Assessor name: James Gleeson

Assessor address: PO Box 1842 BRISBANE NSW 4064

Assessor phone: 07 3871 3144

Assessor accreditation: 0056

Additional information required for approval:

- ☐ Use of local benchmark
- ☐ Expert report...
- ☐ Request for additional gain in site value

Ecosystem credits summary

Plant Community type	Area (ha)	Credits created
Belah woodland on alluvial plains and low rises in the central NSW wheatbelt to Pilliga and Liverpool Plains regions.	47.30	714.00
River Red Gum swampy woodland wetland on cowals (lakes) and associated flood channels in central NSW	19.50	292.00
Weeping Myall open woodland of the Riverina Bioregion and NSW South Western Slopes Bioregion	20.00	305.00
Total	86.80	1,311

Credit profiles

1. Weeping Myall open woodland of the Riverina Bioregion and NSW South Western Slopes Bioregion, (LA212)

Number of ecosystem credits created	305
IBRA sub-region	Lower Slopes - Lachlan

2. Belah woodland on alluvial plains and low rises in the central NSW wheatbelt to Pilliga and Liverpool Plains regions., (LA105)

Number of ecosystem credits created	714
IBRA sub-region	Lower Slopes - Lachlan

3. River Red Gum swampy woodland wetland on cowals (lakes) and associated flood channels in central NSW, (LA191)

Number of ecosystem credits created	292
IBRA sub-region	Lower Slopes - Lachlan

Species credits summary

Common name	Scientific name	Extent of impact Ha or individuals	Number of species credits created
Superb Parrot	<i>Polytelis swainsonii</i>	13.50	96

Additional management actions

Additional management actions are required for:

Vegetation type or threatened species	Management action details
Belah woodland on alluvial plains and low rises in the central NSW wheatbelt to Pilliga and Liverpool Plains regions.	Exclude commercial apiaries
Belah woodland on alluvial plains and low rises in the central NSW wheatbelt to Pilliga and Liverpool Plains regions.	Exclude miscellaneous feral species
Belah woodland on alluvial plains and low rises in the central NSW wheatbelt to Pilliga and Liverpool Plains regions.	Feral and/or over-abundant native herbivore control
Belah woodland on alluvial plains and low rises in the central NSW wheatbelt to Pilliga and Liverpool Plains regions.	Fox control
River Red Gum swampy woodland wetland on cowals (lakes) and associated flood channels in central NSW	Control of feral pigs
River Red Gum swampy woodland wetland on cowals (lakes) and associated flood channels in central NSW	Exclude commercial apiaries
River Red Gum swampy woodland wetland on cowals (lakes) and associated flood channels in central NSW	Exclude miscellaneous feral species
River Red Gum swampy woodland wetland on cowals (lakes) and associated flood channels in central NSW	Feral and/or over-abundant native herbivore control
River Red Gum swampy woodland wetland on cowals (lakes) and associated flood channels in central NSW	Fox control
River Red Gum swampy woodland wetland on cowals (lakes) and associated flood channels in central NSW	Maintain or re-introduce natural flow regimes
River Red Gum swampy woodland wetland on cowals (lakes) and associated flood channels in central NSW	Slashing
Superb Parrot	Feral and/or over-abundant native herbivore control
Weeping Myall open woodland of the Riverina Bioregion and NSW South Western Slopes Bioregion	Exclude commercial apiaries
Weeping Myall open woodland of the Riverina Bioregion and NSW South Western Slopes Bioregion	Feral and/or over-abundant native herbivore control
Weeping Myall open woodland of the Riverina Bioregion and NSW South Western Slopes Bioregion	Fox control

BioBanking credit report



Office of
Environment
& Heritage

This report identifies the number and type of credits required at a BIOBANK SITE

Date of report: 14/05/2018

Time: 2:08:50PM

Calculator version: v4.0

Biobank details

Proposal ID: 0056/2018/4741B

Proposal name: Cowal Gold Mod 14 - Offset 4

Proposal address: 2283 Lake Road Lake Cowal NSW 2671

Proponent name: Evolution Mining (Cowal)

Proponent address: Cowal Gold Operations Lake Cowal Road Lake Cowal NSW 2671

Proponent phone: 0269754749

Assessor name: James Gleeson

Assessor address: PO Box 1842 BRISBANE NSW 4064

Assessor phone: 07 3871 3144

Assessor accreditation: 0056

Additional information required for approval:

- ☐ Use of local benchmark
- ☐ Expert report...
- ☐ Request for additional gain in site value

Ecosystem credits summary

Plant Community type	Area (ha)	Credits created
Poplar Box - Belah woodland on clay-loam soils on alluvial plains of north-central NSW	157.00	1,694.00
Total	157.00	1,694

Credit profiles

1. Poplar Box - Belah woodland on clay-loam soils on alluvial plains of north-central NSW, (LA175)

Number of ecosystem credits created	1,694
IBRA sub-region	Upper Slopes - Lachlan

Species credits summary

Additional management actions

Additional management actions are required for:

Vegetation type or threatened species	Management action details
Poplar Box - Belah woodland on clay-loam soils on alluvial plains of north-central NSW	Exclude commercial apiaries
Poplar Box - Belah woodland on clay-loam soils on alluvial plains of north-central NSW	Exclude miscellaneous feral species
Poplar Box - Belah woodland on clay-loam soils on alluvial plains of north-central NSW	Feral and/or over-abundant native herbivore control
Poplar Box - Belah woodland on clay-loam soils on alluvial plains of north-central NSW	Fox control

BioBanking credit report



Office of
Environment
& Heritage

This report identifies the number and type of credits required at a BIOBANK SITE

Date of report: 14/05/2018

Time: 2:08:02PM

Calculator version: v4.0

Biobank details

Proposal ID: 0056/2018/4742B

Proposal name: Cowal Gold Mod 14 - Offset 5

Proposal address: 935 Buttenshaws Lane Lake Cowal NSW 2671

Proponent name: Evolution Mining (Cowal)

Proponent address: Cowal Gold Operations Lake Cowal Road Lake Cowal NSW 2671

Proponent phone: 0269754749

Assessor name: James Gleeson

Assessor address: PO Box 1842 BRISBANE NSW 4064

Assessor phone: 07 3871 3144

Assessor accreditation: 0056

Additional information required for approval:

- ☐ Use of local benchmark
 - ☒ Derived tussock grassland of the central western plains and lower slopes of NSW
- ☐ Expert report...
- ☐ Request for additional gain in site value

Ecosystem credits summary

Plant Community type	Area (ha)	Credits created
Derived tussock grassland of the central western plains and lower slopes of NSW	9.00	50.00
Green Mallee - White Cypress Pine very tall mallee woodland on gravel rises mainly in the Cobar Peneplain Bioregion	30.50	300.00
Total	39.50	350

Credit profiles

1. Green Mallee - White Cypress Pine very tall mallee woodland on gravel rises mainly in the Cobar Peneplain Bioregion, (LA148)

Number of ecosystem credits created	300
IBRA sub-region	Upper Slopes - Lachlan

2. Derived tussock grassland of the central western plains and lower slopes of NSW, (LA138)

Number of ecosystem credits created	50
IBRA sub-region	Upper Slopes - Lachlan

Species credits summary

Additional management actions

Additional management actions are required for:

Vegetation type or threatened species	Management action details
Green Mallee - White Cypress Pine very tall mallee woodland on gravel rises mainly in the Cobar Peneplain Bioregion	Exclude commercial apiaries
Green Mallee - White Cypress Pine very tall mallee woodland on gravel rises mainly in the Cobar Peneplain Bioregion	Feral and/or over-abundant native herbivore control
Green Mallee - White Cypress Pine very tall mallee woodland on gravel rises mainly in the Cobar Peneplain Bioregion	Fox control

BioBanking credit report



Office of
Environment
& Heritage

This report identifies the number and type of credits required at a BIOBANK SITE

Date of report: 14/05/2018

Time: 2:07:36PM

Calculator version: v4.0

Biobank details

Proposal ID: 0056/2018/4743B

Proposal name: Cowal Gold Mod 14 - Offset 6

Proposal address: 419 Uncle Bills Road Lake Cowal NSW 2671

Proponent name: Evolution Mining (Cowal)

Proponent address: Cowal Gold Operations Lake Cowal Road Lake Cowal NSW 2671

Proponent phone: 0269754749

Assessor name: James Gleeson

Assessor address: PO Box 1842 BRISBANE NSW 4064

Assessor phone: 07 3871 3144

Assessor accreditation: 0056

Additional information required for approval:

- ☐ Use of local benchmark
 - ☒ Derived tussock grassland of the central western plains and lower slopes of NSW
- ☐ Expert report...
- ☐ Request for additional gain in site value

Ecosystem credits summary

Plant Community type	Area (ha)	Credits created
Derived tussock grassland of the central western plains and lower slopes of NSW	29.00	241.00
Shallow freshwater wetland sedgeland in depressions on floodplains on inland alluvial plains and floodplains	6.80	76.00
Western Grey Box - Poplar Box - White Cypress Pine tall woodland on red loams mainly of the eastern Cobar Peneplain Bioregion	165.50	2,084.00
Total	201.30	2,401

Credit profiles

1. Western Grey Box - Poplar Box - White Cypress Pine tall woodland on red loams mainly of the eastern Cobar Peneplain Bioregion, (LA152)

Number of ecosystem credits created	2,084
IBRA sub-region	Upper Slopes - Lachlan

2. Derived tussock grassland of the central western plains and lower slopes of NSW, (LA138)

Number of ecosystem credits created	241
IBRA sub-region	Upper Slopes - Lachlan

3. Shallow freshwater wetland sedgeland in depressions on floodplains on inland alluvial plains and floodplains, (LA198)

Number of ecosystem credits created	76
IBRA sub-region	Upper Slopes - Lachlan

Species credits summary

Additional management actions

Additional management actions are required for:

Vegetation type or threatened species	Management action details
Shallow freshwater wetland sedgeland in depressions on floodplains on inland alluvial plains and floodplains	Control exotic pest fish species (within dams)
Shallow freshwater wetland sedgeland in depressions on floodplains on inland alluvial plains and floodplains	Control of feral pigs
Shallow freshwater wetland sedgeland in depressions on floodplains on inland alluvial plains and floodplains	Exclude miscellaneous feral species
Shallow freshwater wetland sedgeland in depressions on floodplains on inland alluvial plains and floodplains	Feral and/or over-abundant native herbivore control
Shallow freshwater wetland sedgeland in depressions on floodplains on inland alluvial plains and floodplains	Fox control
Shallow freshwater wetland sedgeland in depressions on floodplains on inland alluvial plains and floodplains	Maintain or re-introduce natural flow regimes