



COWAL

ATTACHMENT 4 COMMUNITY CONSULTATION INFORMATION

COWAL GOLD MINE EXTENSION MODIFICATION



BARRICK Cowal Factsheet

cowalinfo@barrick.com

JUNE 2013

Cowal Gold Mine Extension Modification Proposal



Cowal Gold Mine Extension Modification

Background

The Cowal Gold Mine, located near the towns of West Wyalong, Condobolin and Forbes in New South Wales (NSW), was granted Development Consent (DA 14/98) on 26 February 1999. A mining lease was granted on 13 June 2003 and, after a period of construction, mining began in April 2005. The Cowal Gold Mine has been operating since 2005 and Barrick (Cowal) Limited (Barrick) is the current owner/operator of the mine.

The average workforce employed at the Cowal Gold Mine is currently approximately 385 people (including Barrick staff and on-site contractor personnel). The Cowal Gold Mine is currently approved to operate until 31 December 2019.

Summary of the Modification

The Cowal Gold Mine Extension Modification (the Modification) is a proposed extension of the existing open cut to access additional gold-bearing ore adjacent to the existing open pit. The Modification will secure the future of the mine for another decade, providing job security for local mine employees and contractors. It will also continue to stimulate demand in the local and regional economy.

The following key aspects would be associated with the Modification:

- Extension of the operational life of the Cowal Gold Mine by an additional five years (i.e. to 2024).
- No change to the existing mining lease area, mining method, or intensity of annual production.
- Continued development of open pit mining operations at the Cowal Gold Mine, including expansion of the open pit within existing disturbed areas.

- No change to the lake isolation system that separates the open pit and Lake Cowal.
- An increase in total gold production to approximately 3.8 million ounces.
- Continued and expanded development of the existing mine waste rock emplacements within the existing mining lease area.
- Continued and expanded development of the existing tailings storage facilities within the existing mining lease area.
- No change to the currently approved external water supply sources or daily and annual extraction limits from the existing Bland Creek Palaeochannel borefield.

Environmental Assessment

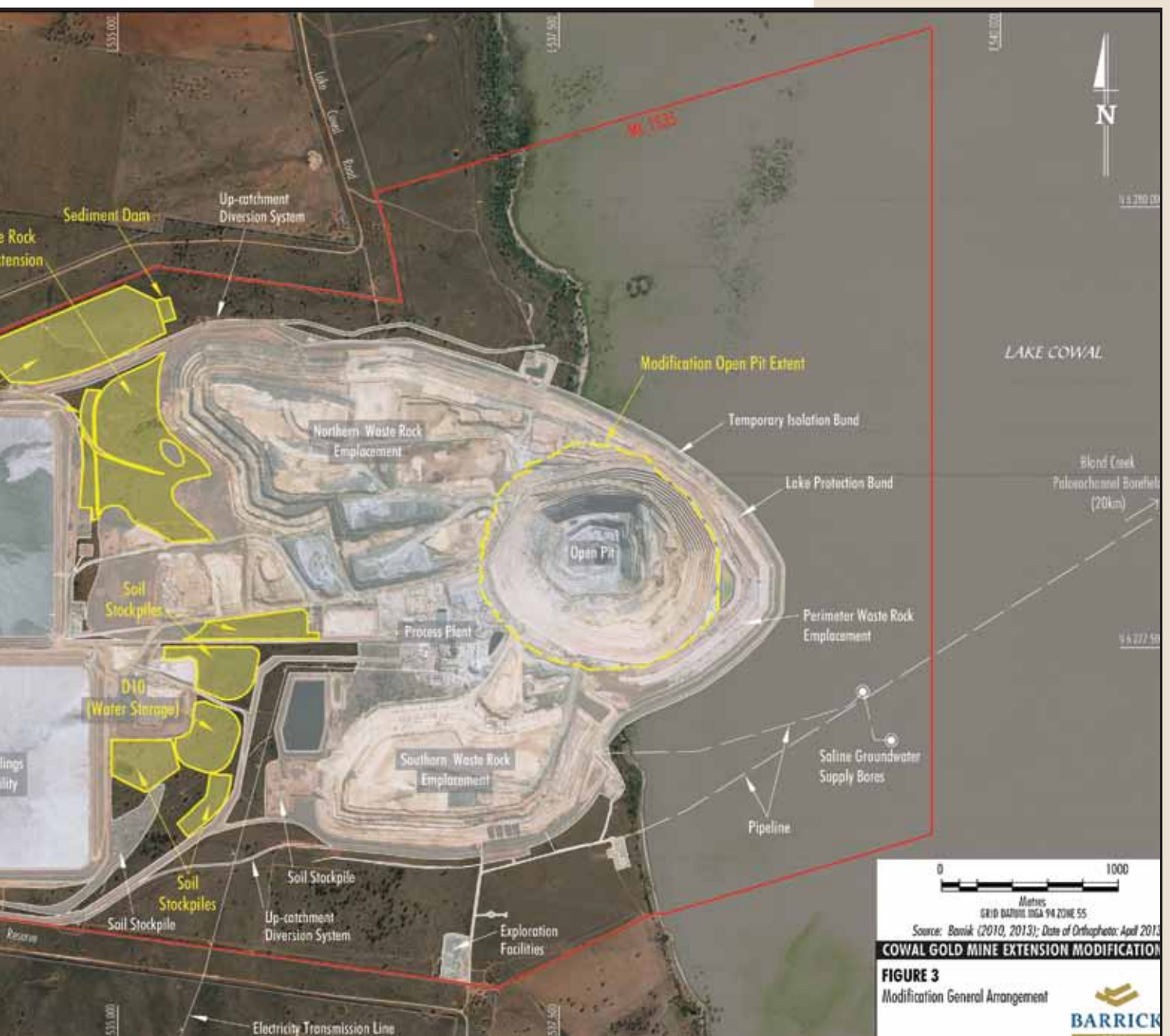
A comprehensive Environmental Assessment (EA) is being prepared by recognised experts to determine the environmental, social and economic effects of the Modification. The EA will be prepared in consultation with the community, relevant State, Federal and Local government agencies and other relevant stakeholders.

Approvals Pathway

As required under NSW legislation, Barrick would seek a modification to the existing Cowal Gold Mine Development Consent under section 75W of the Environmental Planning and Assessment Act, 1979. A summary of this process can be found on the back page of this information booklet.

Once complete, the EA will be lodged with the NSW Department of Planning and Infrastructure (DP&I) for assessment. After the EA has been accepted by the DP&I, it will be placed on exhibition for public review and submissions. It is anticipated that the EA will be on public exhibition in the last quarter of 2013.





Under section 75W of the
Environmental Planning and Assessment Act, 1979

Barrick undertakes prefeasibility assessment to determine optimal mine design including consideration of preliminary economic, social and environmental outcomes.

WE
ARE
HERE

Barrick consults with the community, Councils and Agencies and prepares Environmental Assessment.

Barrick lodges application to modify the Development Consent, including Environmental Assessment. The Department of Planning & Infrastructure determines whether the modification application and Environmental Assessment meets the Department's requirements.

Department exhibits modification application and Environmental Assessment and seeks submissions from the community, Councils and Agencies.

Department collates submissions from the community, Councils and Agencies and provides them to Barrick.

Barrick lodges responses to submissions from the community, Councils and Agencies on the modification application.

Department finalises assessment and consults with Councils and Agencies on draft revised Development Consent conditions

Determining authority (Department of Planning & Infrastructure or Planning Assessment Commission) makes determination

Department of Planning & Infrastructure issues notice of determination

Step 1

Development of Mine Layout and Preparation of Environmental Assessment

Step 2

Exhibition and Consultation

Step 3

Assessment and Determination

Community Engagement Approach

Ongoing community consultation will include sessions for landholders, individual consultation, open and regular Modification updates through newsletters and Barrick's website. The Cowal Gold Mine's Community Environmental Monitoring and Consultative Committee will be kept informed through allocated meetings and specific Modification updates.

Feedback

Barrick invites your feedback on the proposed Modification. Barrick's Community Relations Team can be contacted via:

Email:
Cowalinfo@Barrick.com

Telephone:
02 6975 4819

Post:
**Barrick Cowal Gold Mine –
Community Relations
PO Box 210
WEST WYALONG NSW 2671**

For more information on Barrick, please visit: **www.barrick.com**

