

Site Verification Certificate
Marulan South Limestone Mine Continued Operation Project (SVC-17432970)

Part 4AA, Division 3 of *State Environmental Planning Policy (Mining, Petroleum Production and Extractive Industries) 2007*

Pursuant to clause 17C(1) of *State Environmental Planning Policy (Mining, Petroleum Production and Extractive Industries) 2007*, I determine the application made by Boral Cement Limited by issuing this certificate.

I certify that in my opinion, having regard to the criteria in the *Interim Protocol for site verification and mapping of biophysical strategic agricultural land*, the land specified in Schedule 1 is not Biophysical Strategic Agricultural Land.

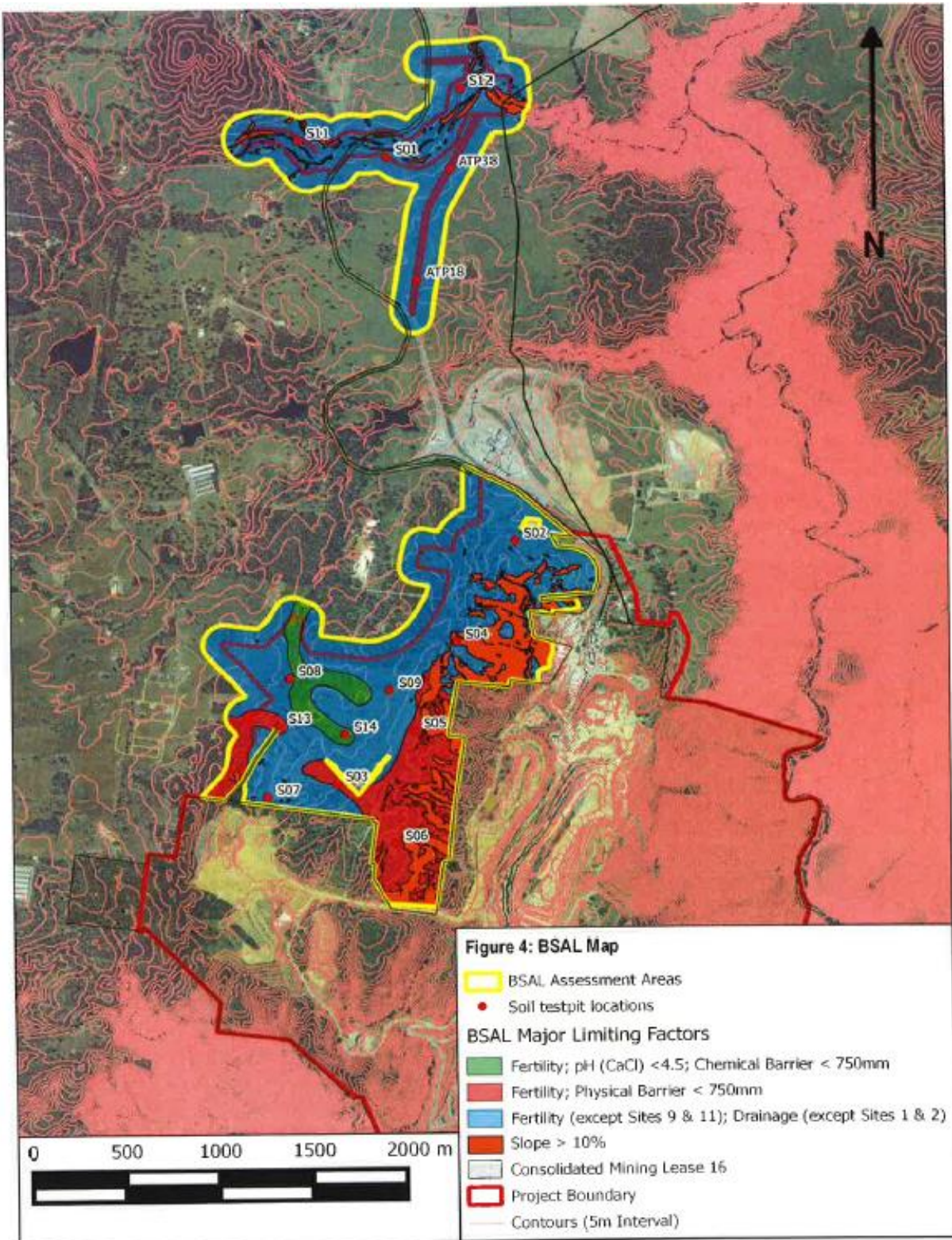
The reasons for forming the opinion on each of the relevant criteria are contained in Schedule 2.



Acting Executive Director – Energy, Industry and Compliance
as delegate for the Planning Secretary

Date certificate issued: 14 May 2021

SCHEDULE 1



SCHEDULE 2

Relevant criteria	Consideration
Soil type	The site comprises soil landscapes that are of low fertility or have poor drainage, and do not meet the BSAL criteria.