

The General Manager
Shoalhaven City Council

8 January 2021

ATTENTION: Jessica Saunders

Dear Sir or Madam

I refer to the referral of 6 January 2021 from NSW Planning, Industry & Environment regarding NSW Government concurrence and referral request CNR-15163 for Shoalhaven City Council Development Application SF10851 at 25 MOSS VALE ROAD BOMADERRY 2541 (Lot 110 DP 131219, Lot 1 DP 520502, Lot 129 DP 3060) for 'Six (6) lot Torrens Title Subdivision and riparian (public) reserve from Lot 1 DP520502, Lot 129 DP 3060 and Lot 110 DP 131219 Bomaderry which includes associated engineering, site works and demolition of existing cattle yards'. Submissions needed to be made to Council by 27 January 2021.

As shown in the below site plans from Endeavour Energy's G/Net master facility model (and extracts from Google Maps Street View) there is:

- An easement benefitting Endeavour Energy (indicated by red hatching) for 33,000 volt / 33 kilovolt (kV) high voltage overhead power lines, overhead earth cables and overhead earth cables.
- Low voltage and overhead power lines to the Moss Vale Road road verge / roadway.
- Low voltage underground service conductor coming from a pole on the Moss Vale Road road verge to the customer connection point for the existing premises.

Please note the location, extent and type of any electricity infrastructure, boundaries etc. shown on the plan is indicative only. In addition it must be recognised that the electricity network is constantly extended, augmented and modified and there is a delay from the completion and commissioning of these works until their capture in the model. Generally (depending on the scale and/or features selected), low voltage (normally not exceeding 1,000 volts) is indicated by blue lines and high voltage (normally exceeding 1,000 volts but for Endeavour Energy's network not exceeding 132,000 volts / 132 kV) by red lines (these lines can appear as solid or dashed and where there are multiple lines / cables only the higher voltage may be shown). This plan only shows the Endeavour Energy network and does not show electricity infrastructure belonging to other authorities or customers owned electrical equipment beyond the customer connection point / point of supply to the property. This plan is not a 'Dial Before You Dig' plan under the provisions of Part 5E 'Protection of underground electricity power lines' of the Electricity Supply Act 1995 (NSW).

Subject to the following recommendations and comments Endeavour Energy has no objection to the Development Application.

- Network Capacity / Connection

Endeavour Energy has noted the following in the Statement of Environmental Effects does not appear to address in detail whether electricity services are available and adequate for the development.

Services

It is not anticipated that the subdivision and future dwellings will place unrealistic or unreasonable demands upon the existing infrastructure network.

Applicants should not automatically assume that the presence of electricity infrastructure in the locality and / or nearby similar development means that adequate supply is immediately available to facilitate their proposed development.

The availability of electricity supply to a site is based on a wide range of factors eg. the age and design of the network; other development in the locality utilising previously spare capacity within the local network; the progress of nearby / surrounding sites including electricity infrastructure works eg. a smaller and isolated development that may not of its own accord require a substation may require a substation to facilitate the development and from which the spare capacity is made available to subsequent nearby development.

Distribution substations are required to transform the high voltage of the distribution feeder (usually at 11,000 volts / 11 kV) to the secondary system voltage (400/230 volts) to supply customers / developments. Distribution substations are divided into ground mounted substations most commonly being a padmount substations installed a complete unit on a concrete foundation / plinth and usually associated with underground distribution and pole mounted substations where there is overhead distribution.

Pole mounted substations have comparatively limited capacity of 16 kilovolt amperes (kVA) up to a maximum of 400 kVA. Padmount substations can accommodate loads from 315 kVA up to 1,500 kVA (typically 500 kVA). Accordingly there is a significant variation in the number and type of premises able to be connected to a substation ie. a single distribution substation may serve one large building, or many homes.

As shown in the below site plan from Endeavour Energy's G/Net master facility model, there are a few distribution substations in proximity of the site which are likely to have some spare capacity. However given the potential development permissible under Shoalhaven Local Environmental Plan 2014 within the B4 – Mixed Use zone (the Statement of Environmental Effects refers to an accompanying concept master plan which is not included in the documents available on the NSW Planning Portal or the Council's website), the resulting electricity load could be significant. Accordingly it is unlikely that sufficient spare capacity will be available to facilitate the proposed development. As well as the capacity of distribution substations, other factors such as the size and rating / load on the conductors and voltage drop (which can affect the quality of supply particularly with long conductor runs) etc. need to be assessed.

Accordingly an extension and / or augmentation of the existing local network may be required. However the extent of the works will not be determined until the final load assessment is completed. Endeavour Energy's preference is to alert proponents / applicants (and Council) of the potential matters that may arise as further development of areas continues to occur.

In due course the applicant for the proposed development of the site will need to submit an appropriate application based on the maximum demand for electricity for connection of load via Endeavour Energy's Network Connections Branch to carry out the final load assessment and the method of supply will be determined. Straightforward applications can be completed online and permission to connect may be provided immediately if submitting a complying application.

Depending on the outcome of the assessment, any required padmount substation will need to be located within the property (in a suitable and accessible location) and be protected (including any associated cabling) by an easement and associated restrictions benefiting and gifted to Endeavour Energy. Please refer to Endeavour Energy's Mains Design Instruction MDI 0044 'Easements and Property Tenure Rights'.

For more complex connections, advice on the electricity infrastructure required to facilitate the proposed development (including asset relocations) can be obtained by submitting a Technical Review Request to Endeavour Energy's Network Connections Branch, the form for which FPJ6007 is attached. The response to these enquiries is based upon a desktop review of corporate information systems, and as such does not involve the engagement of various internal stakeholders in order to develop a 'Connection Offer'. It does provide details of preliminary connection requirements which can be considered by the applicant prior to lodging a formal application for connection of load.

Further details are available by contacting Endeavour Energy's Network Connections Branch via Head Office enquiries on business days on telephone: 133 718 or (02) 9853 6666 from 9am - 4:30pm or on Endeavour Energy's website under 'Home > Residential and business > Connecting to our network' via the following link:

<http://www.endeavourenergy.com.au/>.

Alternatively the applicant may need to engage an Accredited Service Provider (ASP) of an appropriate level and class of accreditation to assess the electricity load and the proposed method of supply for the development. The ASP scheme is administered by Energy NSW and details are available on their website via the following link or telephone 13 77 88:

<https://energy.nsw.gov.au/government-and-regulation/legislative-and-regulatory-requirements/asp-scheme-and-contestable-works>.

- Subdivision of Easements

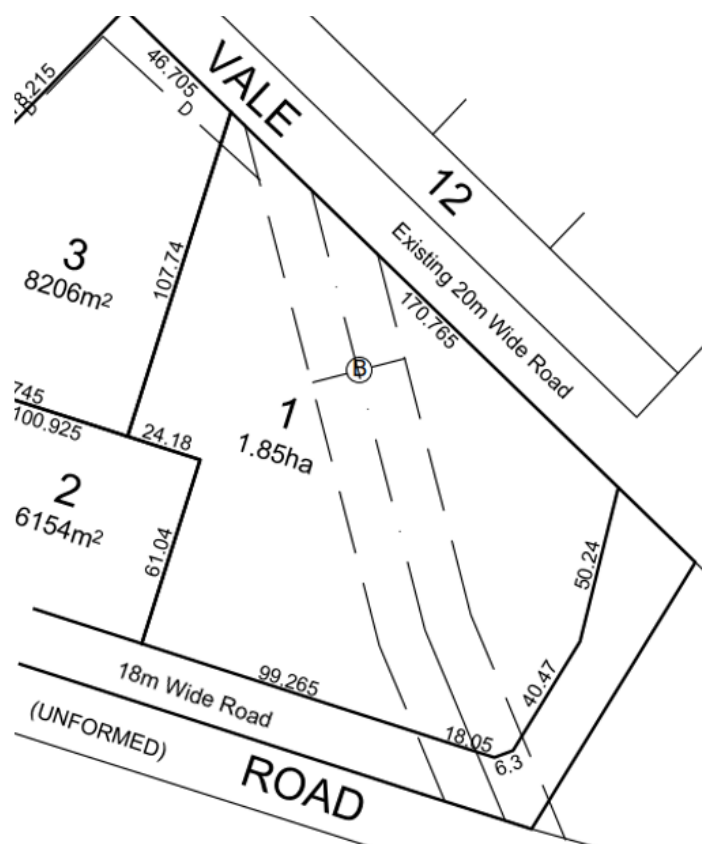
Endeavour Energy's preference is to have continuity of its easements over the most direct and practicable route affecting the least number of lots as possible. Therefore, except in special circumstances such as a staged or facilitating subdivision, it generally does not support the subdivision of easements (even in part) and their incorporation into multiple / privately owned lots. The incorporation of electricity easements into privately owned lots is generally problematic for both Endeavour Energy and the landowner and requires additional easement management to ensure no uncontrolled activities / encroachments occur within the easement.

Dissecting the easement along its route results in restriction of access eg. every lot being potentially fenced on both sides, multiple gates / openings would be required to ensure contiguous / ready access (please also refer to the below point 'Easement Management / Network Access').

If there is no reasonable alternative option, in subdividing an easement consideration must be given to minimising the impact on the easement rights. The subdivision of an easement / parallel to the overhead power lines or underground cables is generally not permitted (as it effectively reduces the easement width). The number and length of crossings should be kept to a minimum eg. crossings should be or close to perpendicular to the overhead power lines or underground cables and must be at least half the easement width beyond any pole or structure. Easements for other types of electricity infrastructure such as padmount substations or switching stations shall not be subdivided but any associated restriction or right of access etc. may encumber and adjoining lot.

However, if the subdivision does result in the incorporation of Endeavour Energy's easement into multiple lots, not only must the easements, rights and restrictions, covenants etc. be retained over the effected lots and in accordance with the requirements of NSW Land Registry Services (LRS), but Endeavour Energy may need to include additional requirements / restrictions to be registered on titles to each of the lots to ensure it can reasonably access and manage its existing electricity infrastructure within the easement.

In this instance Endeavour Energy has noted that as shown in the following extract of the Plan Showing Proposed Subdivision Lot Layout the easement for overhead power lines will essentially be entirely within proposed Lot 1 and partially within the proposed road reserve and accordingly Endeavour Energy has no concern regarding this (stage?) of the proposed subdivision. Any further development and / or subdivision of proposed Lot 1 will need to address the foregoing.



- Network Asset Design

Endeavour Energy's Company Policy 9.2.5 'Network Asset Design', includes the following requirements for electricity connections to new subdivision / development:

5.11 Reticulation policy

5.11.1 Distribution reticulation

In order to improve the reliability performance of and to reduce the operating expenditure on the network over the long term the company has adopted the strategy of requiring new lines to be either underground cables or where overhead is permitted, to be predominantly of covered or insulated construction. Notwithstanding this strategy, bare wire overhead construction is appropriate and permitted in some situations as detailed below.

In areas with the potential for significant overhanging foliage, CCT is used to provide increased reliability as it is less susceptible to outages from wind-blown branches and debris than bare conductors. CCT must only be used in treed² areas as the probability of a direct lightning strike is low. In open areas where the line is not shielded from a direct lightning strike, bare conductors must generally be used for 11kV and 22kV reticulation.

Non-metallic Screened High Voltage Aerial Bundled Cable (NMSHVABC) must be used in areas which are heavily treed and where it is not practicable to maintain a tree clearing envelope around the conductors.

² A "treed" area is one with a substantial number of trees adjacent to the line, in each span. In these situations CCT is used to provide increased reliability as it is less susceptible to outages from wind-blown

5.11.1.1 Urban areas

Reticulation of new residential subdivisions will be underground. In areas of low bushfire consequence, new lines within existing overhead areas can be overhead, unless underground lines are cost justified or required by either environmental or local council requirements.

Where underground reticulation is required on a feeder that supplies a mixture of industrial, commercial and/or residential loads, the standard of underground construction will apply to all types of load within that development.

Where ducting is used, adequate spare ducts and easements must be provided at the outset to cover the final load requirements of the entire development plan.

Extensions to the existing overhead 11kV/22kV network must generally be underground. Bare wire will be used for conductor replacements and augmentations except in treed areas where CCT or NMSHVABC must be used.

Extensions to the existing overhead LV network and augmentations must either be underground or ABC. Conductor replacements greater than 100m in route length must utilise aerial bundled cable.

- Bushfire

Endeavour Energy has noted that the Statement of Environmental Effects indicates that 'The site is mapped as being bushfire prone land'. The accompanying Bushfire Protection Assessment which provides an assessment of the site having regards to NSW Rural Fire Service 'Planning for Bush Fire Protection 2019' includes the following advice:

3.6 Electricity services

The compliance of the proposed supply of electricity services with Sections 5.3.4 and 6.8.3 of PBP is detailed in Table 10.

Table 10: Requirements for the supply of Electricity services (adapted from Table 5.3c and Table 6.8c of PBP)

Performance Criteria	Acceptable Solution	Compliance Notes
Location of electricity services limits the possibility of ignition of surrounding bush land or the fabric of buildings.	Where practicable, electrical transmission lines are underground; Where overhead, electrical transmission lines are proposed as follows: Lines are installed with short pole spacing (30 m), unless crossing gullies, gorges or riparian areas; and No part of a tree is closer to a power line than the distance set out in ISSC3 Guide for the Management of Vegetation in the Vicinity of Electricity Assets (ISSC3 2016).	Electricity services to the proposed development will be located underground. Not applicable.

The following is an extract of Endeavour Energy's Company Policy 9.1.1 Bushfire Risk Management:

9.1.1 BUSHFIRE RISK MANAGEMENT

1.0 POLICY STATEMENT

The company is committed to the application of prudent asset management strategies to reduce the risk of bushfires caused by network assets and aerial consumer mains to as low as reasonably practicable (ALARP) level. The company is also committed to mitigating the associated risk to network assets and customer supply reliability during times of bushfire whilst achieving practical safety, reliability, quality of supply, efficient investment and environmental outcomes. The company is committed to compliance with relevant acts, regulations and codes.

Accordingly the electricity network required to service the proposed development must be fit for purpose and meet the technical specifications, design, construction and commissioning standards based on Endeavour Energy's risk assessment associated with the implementation and use of the network connection / infrastructure for a bushfire prone site. In assessing bushfire risk, Endeavour Energy has traditionally focused on the likelihood of its network starting a bushfire, which is a function of the condition of the network. Risk control has focused on reducing the likelihood of fire ignition by implementing good design and maintenance practices. However the potential impact of a bushfire on its electricity infrastructure and the safety risks associated with the loss of electricity supply are also considered.

- Flooding and Drainage

Endeavour Energy has noted that the Statement of Environmental Effects indicates that 'The site is identified as being part flood prone land'.

Endeavour Energy requires the electricity network needed to service an area / development to be fit for purpose and meet the technical specifications, design, construction and commissioning standards based on Endeavour Energy's risk assessment associated with the implementation and use of the network connection / infrastructure for a flood prone site. Risk control has focused typically on avoiding the threat, but where this is not possible, reducing the negative effect or probability of flood damage to assets by implementing good design and maintenance practices.

Distribution substations should not be subject to flood inundation or stormwater runoff ie. the padmount substation cubicles are weatherproof not flood proof and the cable pits whilst designed to be self-draining should not be subject to excessive ingress of water. Section 7 'Substation and switching stations' of Endeavour Energy's Mains Construction Instruction MCI 0006 'Underground distribution construction standards manual' provides the following details of the requirements for flooding and drainage in new padmount substation locations.

7.1.6 Flooding and drainage

Substations are to be located such that the risk of flooding or stormwater damage is minimal.

As a minimum the level at the top of the transformer footing, HV and LV switchgear, shall not be lower than the 1:100 year flood level.

All drains within the substation site area or in the vicinity shall be properly maintained to avoid the possibility of water damage to Endeavour Energy's equipment.

In areas where, as determined by the Network Substation Manager, there is a high water table or a heightened risk of flooding, indoor substations will not be permitted.

All materials used in the construction below the substation (ground level) shall be capable of withstanding prolonged immersion in water without swelling or deterioration.



Figure 51 - Example substation raised above 1:100 flood level

- Earthing

The construction of any building or structure (including fencing, signage, flag poles, hoardings etc.) whether temporary or permanent that is connected to or in close proximity to Endeavour Energy's electrical network is required to comply with Australian/New Zealand Standard AS/NZS 3000:2018 'Electrical installations' as updated from time to time. This Standard sets out requirements for the design, construction and verification of electrical installations, including ensuring there is adequate connection to the earth. It applies to all electrical installations including temporary builder's supply / connections.

Inadequate connection to the earth to allow a leaking / fault current to flow into the grounding system and be properly dissipated places persons, equipment connected to the network and the electricity network itself at risk from electric shock, fire and physical injury. The earthing system is usually in the form of an earth electrode consisting of earth rods or mats buried in the ground. It should be designed by a suitably qualified electrical engineer / ASP following a site-specific risk assessment having regard to the potential number of people could be simultaneously exposed, ground resistivity etc.

For details of the ASP scheme please refer to the above point 'Network Capacity / Connection'.

- Easement Management / Network Access

The following is a summary of the usual / main terms of Endeavour Energy's electrical easements requiring that the landowner:

- Not install or permit to be installed any buildings, structures or services within the easement site.
- Not alter the surface level of the easement site.
- Not do or permit to be done anything that restricts access to the easement site without the prior written permission of Endeavour Energy and in accordance with such conditions as Endeavour Energy may reasonably impose.

Endeavour Energy's preference is for no activities or encroachments to occur within its easements. Most activities are prohibited within the padmount substation easement area. However, if any proposed works or activities (other than those approved / certified by Endeavour Energy's Network Connections Branch as part of an enquiry / application for load or asset relocation project) will encroach / affect Endeavour Energy's easements, contact must first be made with the Endeavour Energy's Easements Officer, Jennie Saban, on business days on mobile 0417484402 or alternately via email Jennie.Saban@endeavourenergy.com.au or Easements@endeavourenergy.com.au.

Please find attached for the applicant's reference copies of Endeavour Energy's:

- Mains Design Instruction MDI 0044 'Easements and Property Tenure Rights' which deals with activities / encroachments within easements.
- General Restrictions for Overhead Power Lines.

It is imperative that the access to the existing electrical infrastructure on and in proximity of the site be maintained at all times. To ensure that supply electricity is available to the community, access to the electricity infrastructure may be required at any time. Restricted access to electricity infrastructure by maintenance workers causes delays in power restoration and may have severe consequences in the event of an emergency.

Endeavour Energy has noted that whilst the Statement of Environmental Effects mentions that 'The site is identified with an electrical easement 30.48m wide over part of Lot 110 DP 131219' it does not address the activities or works proposed to be undertaken within the easement. The 'the proposal will demolish existing infrastructure (including sheds and buildings) and fences related to the current cattle yard use of the site' as shown in the following extracts of SIX Maps on which the approximate location of the easement is shown, will involve the undertaking of works within the easement.



- Prudent Avoidance

The electricity industry has adopted a policy of prudent avoidance by doing what can be done without undue inconvenience and at modest expense to avert the possible risk to health from exposure to emissions from electricity infrastructure such as electric and magnetic fields (EMF) and noise which generally increase the higher the voltage i.e. Endeavour Energy's network ranges from low voltage (normally not exceeding 1,000 volts) to high voltage (normally exceeding 1,000 volts but not exceeding 132,000 volts / 132 kV).

In practical terms this means that when designing new transmission and distribution facilities, consideration is given to reducing exposure and increasing separation distances to more sensitive uses such as residential or schools, pre-schools, day care centres or where potentially a greater number of people are regularly exposed for extended periods of time.

These emissions are usually not an issue but with Council's permitting or encouraging development with higher density, reduced setbacks and increased building heights, but as the electricity network operates 24/7/365 (all day, every day of the year), the level of exposure can increase.

Endeavour Energy believes that irrespective of the zoning or land use, applicants (and Council) should also adopt a policy of prudent avoidance by the siting of more sensitive uses e.g. the office component of an industrial building, away from and less susceptible uses such as garages, non-habitable or rooms not regularly occupied e.g. storage areas in a commercial building, towards any electricity infrastructure – including any possible future electricity infrastructure required to facilitate the proposed development.

Where development is proposed near electricity infrastructure, Endeavour Energy is not responsible for any amelioration measures for such emissions that may impact on the nearby proposed development.

Please find attached a copy of Energy Networks Association's 'Electric & Magnetic Fields – What We Know' which can also be accessed via their website at <https://www.energynetworks.com.au/electric-and-magnetic-fields> and provides the following advice:

Electric fields are strongest closest to their source, and their strength diminishes rapidly as we move away from the source.

The level of a magnetic field depends on the amount of the current (measured in amps), and decreases rapidly once we move away from the source.

Typical magnetic field measurements associated with Endeavour Energy's activities and assets given the required easement widths, safety clearances etc. and having a maximum voltage of 132,000 volt / 132 kV, will with the observance of these separation distances not exceed the recommended magnetic field public exposure limits.

- **Vegetation Management**

The planting of large trees near electricity infrastructure is not supported by Endeavour Energy. Particularly for overhead power lines, ongoing vegetation management / tree trimming is a significant network cost and falling trees and branches during storms are a major cause of power outages.

Suitable planting needs to be undertaken in proximity of electricity infrastructure (including any new electricity infrastructure required to facilitate the proposed development). Only low growing shrubs not exceeding 3.0 metres in height, ground covers and smaller shrubs, with non-invasive root systems are the best plants to use. Larger trees should be planted well away from electricity infrastructure (at least the same distance from overhead power lines as their potential full grown height) and even with underground cables, be installed with a root barrier around the root ball of the plant.

Landscaping that interferes with electricity infrastructure may become a potential safety risk, cause of bush fire, restrict access, reduce light levels from streetlights or result in the interruption of supply. Such landscaping may be subject to Endeavour Energy's Vegetation Management program and/or the provisions of the Electricity Supply Act 1995 (NSW) Section 48 'Interference with electricity works by trees' by which under certain circumstances the cost of carrying out such work may be recovered.

Endeavour Energy's recommendation is that existing trees which are of low ecological significance in proximity of overhead power lines be removed and if necessary replaced by an alternative smaller planting to ensure appropriate clearances are maintained whilst minimising the need for future pruning.

- **Dial Before You Dig**

Before commencing any underground activity the applicant is required to obtain advice from the **Dial Before You Dig 1100** service in accordance with the requirements of the Electricity Supply Act 1995 (NSW) and associated Regulations. This should be obtained by the applicant not only to identify the location of any underground electrical and other utility infrastructure across the site, but also to identify them as a hazard and to properly assess the risk.

- **Removal of Electricity Supply**

Approval for the permanent disconnection and removal of supply must be obtained from Endeavour Energy's Network Connections Branch (contact via Head Office enquiries on telephone: 133 718 or (02) 9853 6666 from 8am - 5:30pm) by Accredited Service Providers (ASP) with the relevant class of Authorisation for the type of work being carried out. The work could involve:

- The disconnection and removal of an underground service cable or overhead service line,
- Removal of metering equipment.

The written request must be submitted to Endeavour Energy using Form FPJ4603 'Permission to Remove Service / Metering by Authorised Level 2 Accredited Service Provider' which must be accompanied by Notification of Service Works (NOSW) forms provided as a result of service work activity performed by a Level 2 ASP. The retailer must also provide written agreement for the permanent removal of supply.

For details of the ASP scheme please refer to the above point 'Network Capacity / Connection'.

- Demolition

Demolition work is to be carried out in accordance with Australian Standard AS 2601—2001: ‘The demolition of structures’ as updated from time to time. All electric cables or apparatus which are liable to be a source of danger, other than a cable or apparatus used for the demolition works shall be disconnected ie. the existing customer service lines will need to be isolated and/or removed during demolition. Appropriate care must be taken to not otherwise interfere with any electrical infrastructure on or in the vicinity of the site eg. streetlight columns, power poles, overhead power lines and underground cables etc.

- Site Remediation

Endeavour Energy’s Environmental Business Partner Team have advised that the remediation of soils or surfaces impacted by various forms of electricity infrastructure is not uncommon but is usually not significant eg. transformer oil associated with leaking substations, pole treatment chemicals at the base of timber poles etc. The method of remediation is generally the removal of the electricity infrastructure, removal of any stained surfaces or excavation of any contaminated soils and their disposal at a licensed land fill. The decommissioning and removal of the redundant electricity infrastructure will be dealt with by Endeavour Energy’s Network Connections Branch as part of the application for the connection of load for the new development – please refer to the above point ‘Network Capacity / Connection’.

If the applicant has any concerns over the remediation works related to redundant electricity infrastructure they should contact Environmental Business Partner Team via Head Office enquiries on business days on telephone: 133 718 or (02) 9853 6666 from 9am - 4:30pm.

- Public Safety

Workers involved in work near electricity infrastructure run the risk of receiving an electric shock and causing substantial damage to plant and equipment. I have attached Endeavour Energy’s public safety training resources, which were developed to help general public / workers to understand why you may be at risk and what you can do to work safely. The public safety training resources are also available via Endeavour Energy’s website via the following link:

<http://www.endeavourenergy.com.au/wps/wcm/connect/ee/nsw/nsw+homepage/communitynav/safety/safety+brochures> .

If the applicant has any concerns over the proposed works in proximity of the Endeavour Energy’s electricity infrastructure to the road verge / roadway, as part of a public safety initiative Endeavour Energy has set up an email account that is accessible by a range of stakeholders across the company in order to provide more effective lines of communication with the general public who may be undertaking construction activities in proximity of electricity infrastructure such as builders, construction industry workers etc. The email address is Construction.Works@endeavourenergy.com.au .

- Emergency Contact

In case of an emergency relating to Endeavour Energy’s electrical network, the applicant should note the Emergencies Telephone is 131 003 which can be contacted 24 hours/7 days. Endeavour Energy’s contact details should be included in any relevant risk and safety management plan.

I appreciate that not all the foregoing issues may be directly or immediately relevant or significant to the Development Application ie. if a padmount substation is not required on the site. However, Endeavour Energy’s preference is to alert proponents / applicants of the potential matters that may arise should development within closer proximity of the existing and/or required electricity infrastructure needed to facilitate the proposed development on or in the vicinity of the site occur.

Please note that Endeavour Energy can only assess the development application based on the information provided by the applicant and Council. Due to time and resource constraints it is not possible to refer all development application notifications to the relevant internal stakeholders for review and advice or to request additional information from the applicant or Council. Applicants should be providing proper detailed plans of the electricity infrastructure / easements on or near the site and address the potential impacts of the proposed development thereon in the Statement of Environmental Effects. The provision of inadequate detail may result in Endeavour Energy objecting to the Development Application.

Could you please pass on a copy of this submission and the attached resources to the applicant? Should you wish to discuss this matter, or have any questions, please do not hesitate to contact me or the contacts identified above in relation to the various matters. Due to the high number of development application / planning proposal notifications submitted to Endeavour Energy, to ensure a response contact by email to property.development@endeavourenergy.com.au is preferred.

With the current COVID-19 health risk, as many as possible of Endeavour Energy staff are working from home. As a result there is only a small contingent located at the Huntingwood head office for essential operations. Although working from home, access to emails and other internal stakeholders is now somewhat limited and as a result it may take longer than usual to respond to enquiries. Thank you for your understanding during this time.

Yours faithfully

Cornelis Duba

Development Application Specialist

Network Environment & Assessment

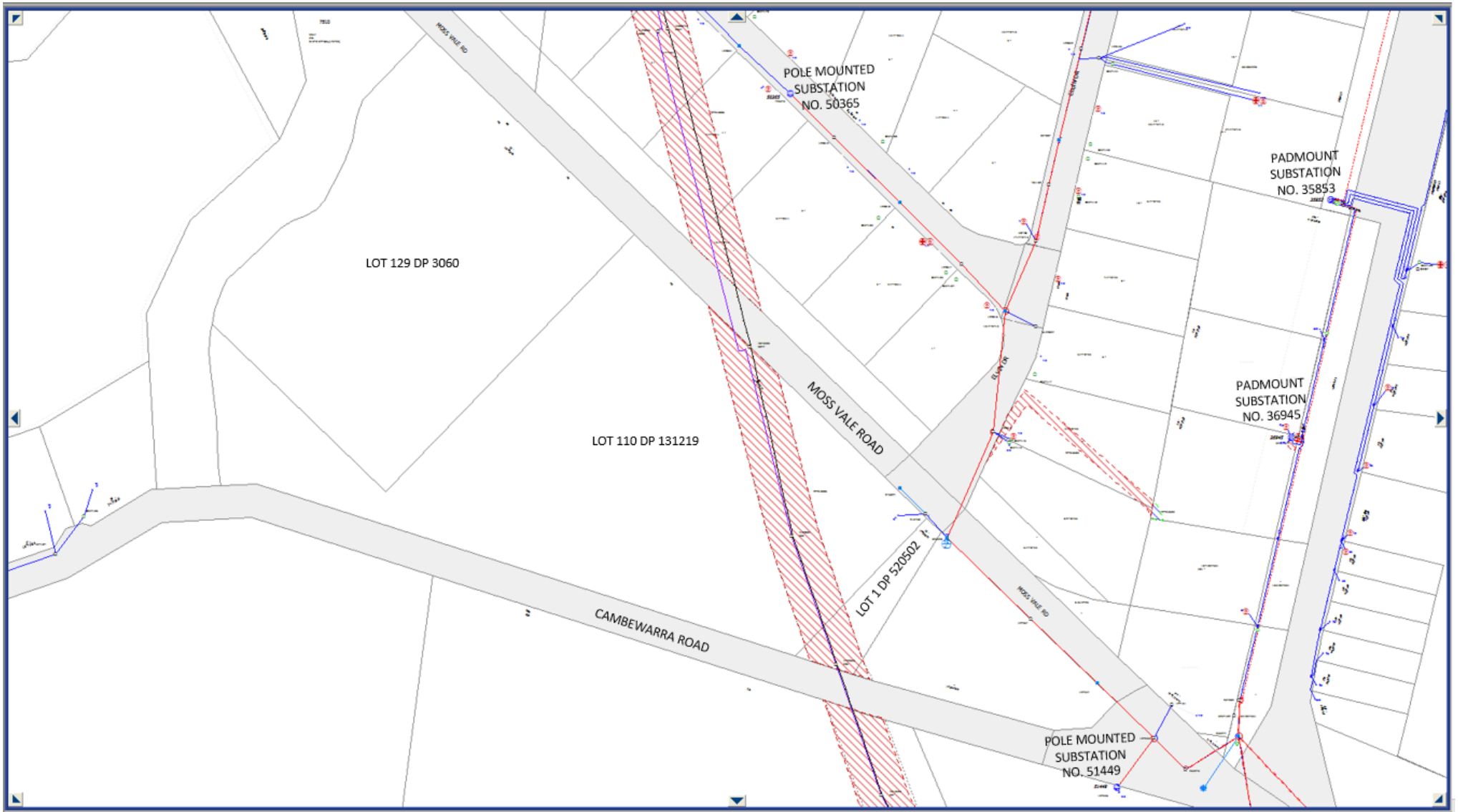
M: 0455 250 981

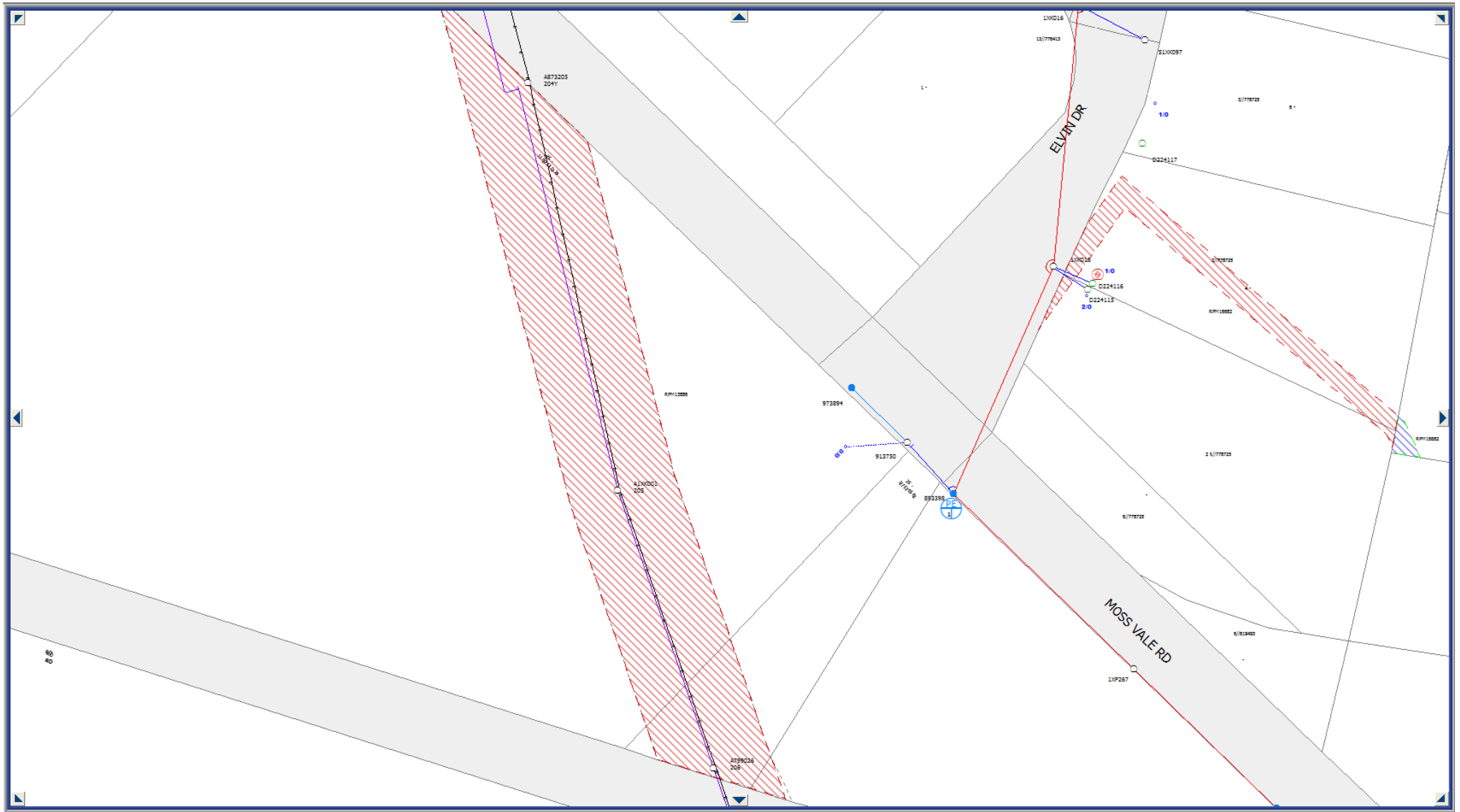
E: cornelis.duba@endeavourenergy.com.au

51 Huntingwood Drive, Huntingwood NSW

2148 www.endeavourenergy.com.au







←

25 Moss Vale Rd

Cambewarra, New South Wales

Google

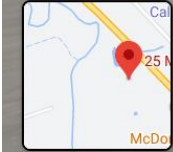
Street View



Tourist Drive 7
Bomaderry, New South Wales

Google

Street View



Google