

Photo 1: Map emailed from WindLab of proposed locations of wind turbines



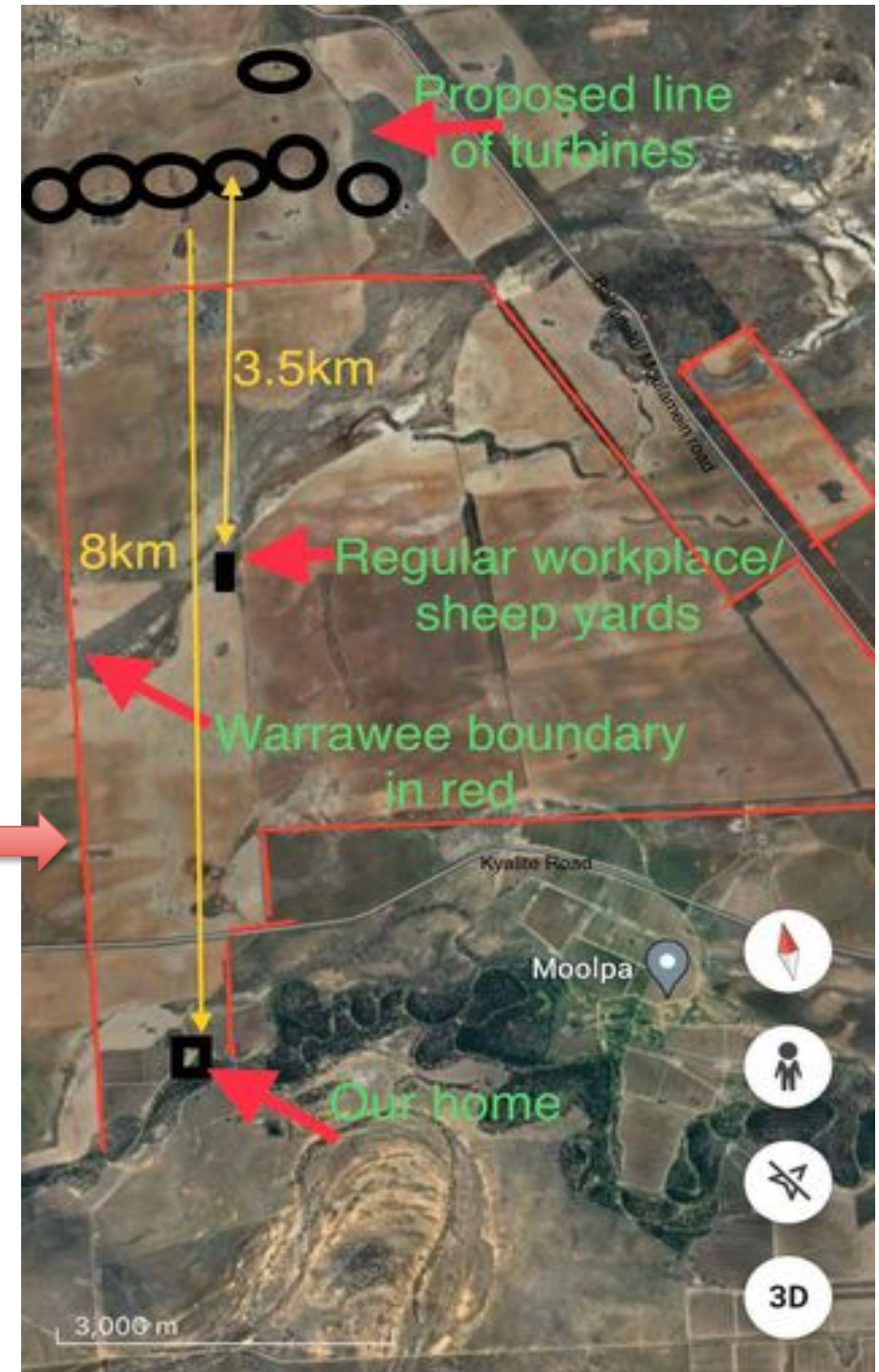
#### Legend

- Project boundary
- Turbines
- Main haulage route
- 220kV Transgrid transmission line (existing)
- 330kV Project EnergyConnect transmission line (under construction)

Located 15km south of Balranald on land used for cropping and grazing, Junction Rivers is ideally positioned to connect to the existing 220kV TransGrid line, and the 330kV Project Energy Connect transmission line that is currently under construction.

The region provides optimal wind conditions and land suitability, and is ideally positioned within the South-West Renewable Energy Zone (REZ).

Photo 2: Map showing the boundary lines of our property 'Warrawee'.





**Photo 3 – A view of our Wheat crop that shares the boundary fence of the proposed wind turbines.**





**Photo 4: A view from our home that looks out towards the line of proposed wind turbines. We can only imagine how tarnished our view will be once the turbines go up.**





**Photo 5: Wedge-tailed Eagle nests on two different locations on our property; one is within close proximity of wind turbines.**





**Photo 6: Photos of Major Mitchell Cockatoos in Pine trees in Kyalite.**





Photo 7: A collection of wildlife from around our farm.



Barking Gecko



Emu



Kookaburra



Echidna



Frilled-neck lizard