



## REHABILITATION STRATEGY

**Angus Place**

**May 2024**



**DOCUMENT CONTROL**

MANAGEMENT PLAN DETAILS	Title:	Rehabilitation Strategy – Angus Place
	Applicant:	Angus Place
	Revision No.:	0.4

## Table of Contents

<b>1</b>	<b>INTRODUCTION .....</b>	<b>1</b>
1.1	HISTORY OF OPERATIONS .....	1
1.2	APPROVED DEVELOPMENT INFORMATION .....	2
1.2.1	<i>Development Consents Granted Under EP&amp;A Act and EPBC Act.....</i>	2
1.2.2	<i>Other Relevant Development Consents.....</i>	5
1.3	REHABILITATION STRATEGY REQUIREMENTS .....	5
1.4	REHABILITATION OBJECTIVES.....	6
<b>2</b>	<b>SITE CONTEXT .....</b>	<b>7</b>
2.1	LAND OWNERSHIP .....	7
2.2	LAND USE .....	7
2.2.1	<i>Historical Land Use.....</i>	7
2.2.2	<i>Current Land Use.....</i>	7
2.2.3	<i>Proposed Land Use.....</i>	7
2.3	NATURAL FEATURES AND TOPOGRAPHY .....	8
2.4	EXISTING VEGETATION .....	8
2.5	REGULATORY CONTEXT .....	12
<b>3</b>	<b>LAND MANAGEMENT AND REHABILITATION .....</b>	<b>14</b>
3.1	WATER MANAGEMENT AREAS .....	14
3.2	EXPLORATION.....	14
3.3	SUBSIDENCE MANAGEMENT .....	14
3.4	INFRASTRUCTURE .....	14
<b>4</b>	<b>MINE CLOSURE PLANNING.....</b>	<b>17</b>
4.1	STRATEGIC FRAMEWORK FOR MINE CLOSURE.....	17
4.2	INTEGRATION WITH MINE CLOSURE PLANNING PROCESS.....	19
4.3	TEMPORARY OR PREMATURE MINE CLOSURE .....	22
<b>5</b>	<b>STAKEHOLDER CONSULTATION .....</b>	<b>23</b>
5.1	STAKEHOLDER ENGAGEMENT PLANS .....	23
5.1.1	<i>Angus Place Stakeholder Engagement Plan.....</i>	23
5.1.2	<i>Project Specific Stakeholder Engagement Plans .....</i>	23
5.2	COMMUNITY CONSULTATION COMMITTEE.....	24
5.3	STATUTORY AUTHORITY CONSULTATION .....	24
5.3.1	<i>Relevant Statutory Authorities.....</i>	24
5.4	OTHER KEY STAKEHOLDERS.....	25
<b>6</b>	<b>PROPOSED FUTURE USE OF REHABILITATED AREAS.....</b>	<b>26</b>
<b>7</b>	<b>REHABILITATION.....</b>	<b>32</b>
7.1	REHABILITATION PHASES .....	32
7.2	INTEGRATION WITH WESTERN REGION BIODIVERSITY MANAGEMENT PLAN .....	33
<b>8</b>	<b>INVESTIGATIONS AND PROGRAMMES.....</b>	<b>34</b>
8.1	MINIMISING ADVERSE SOCIO-ECONOMIC EFFECTS .....	34
8.2	OPPORTUNITIES TO REFINE AND IMPROVE THE FINAL LANDFORM .....	34

<b>9</b>	<b>REVIEW.....</b>	<b>35</b>
<b>10</b>	<b>REFERENCES.....</b>	<b>36</b>

## **List of Figures**

FIGURE 1.1	REGIONAL LOCALITY.....	3
FIGURE 1.2	ANGUS PLACE LAYOUT .....	4
FIGURE 2.1	LAND OWNERSHIP .....	9
FIGURE 2.2	LAND USE .....	10
FIGURE 2.3	VEGETATION COMMUNITIES AND HYDROLOGY .....	11
FIGURE 6.1A	FINAL LANDFORM AND REHABILITATION.....	28
FIGURE 6.1B	FINAL LANDFORM AND REHABILITATION.....	29
FIGURE 6.1C	FINAL LANDFORM AND REHABILITATION.....	30
FIGURE 6.1D	FINAL LANDFORM AND REHABILITATION.....	31

## **List of Tables**

TABLE 1.1	DEVELOPMENT CONSENTS.....	2
TABLE 1.2	REHABILITATION STRATEGY REQUIREMENTS.....	5
TABLE 2.1	REGULATORY REQUIREMENTS.....	12
TABLE 3.1	INFRASTRUCTURE TO BE DECOMMISSIONED .....	15
TABLE 4.1	STRATEGIC FRAMEWORK FOR MINE CLOSURE OBJECTIVES.....	17
TABLE 4.2	INDICATIVE MINE CLOSURE TIMELINE.....	21
TABLE 6.1	VEGETATION DESCRIPTIONS FOR RELEVANT PCTs.....	27

## **Appendices**

Appendix A	DPHI Endorsement of Suitably Qualified Persons
Appendix B	Stakeholder Engagement Records



## **1 INTRODUCTION**

Angus Place Colliery (Angus Place) is an existing underground coal mining operation located approximately 5 kilometres (km) north of the village of Lidsdale, 8 km northeast of the township of Wallerawang and approximately 15 km northwest of the city of Lithgow in the Blue Mountains region of New South Wales (NSW). It is bordered by Springvale Colliery to the south, Ivanhoe Colliery to the northwest and the Wolgan Valley and the Newnes Plateau to the north and east respectively. The regional locality of Angus Place is shown in **Figure 1.1**. The site layout has been shown on **Figure 1.2**.

Angus Place is owned and operated by Centennial Angus Place Pty Ltd (Centennial Angus Place), a subsidiary of Centennial Coal Company Limited (Centennial). Centennial was purchased by Banpu Public Company Limited (Banpu) in October 2010.

This Rehabilitation Strategy has been developed in accordance with Schedule 3, Condition 36C of MP 06\_0021 Modification 7 (Mod 7). This Rehabilitation Strategy has been prepared by Adam Williams with support from Jai Roby and Aidan Wright of Umwelt Environmental & Social Consultants (Umwelt). Adam Williams was endorsed by the Department of Planning, Housing and Infrastructure (DPHI) as a suitably qualified person to prepare the Rehabilitation Strategy for Angus Place (refer to **Appendix A**). This Rehabilitation Strategy relates to operations at Angus Place, with operational context regarding Springvale Coal Services (SSD 5579) included where required.

Additional detail regarding rehabilitation methodologies, implementation, monitoring and management is outlined within the *Angus Place Rehabilitation Management Plan (RMP)*. The RMP has been prepared in accordance with the Mining Exploration and Geoscience – Resources Regulator's (RR) *Form and Way: Rehabilitation Management Plan for Large Mines* (RR, 2024), associated guidelines and to satisfy Schedule 3, Condition 37 of MP 06\_0021 which requires Angus Place to prepare and implement a RMP in accordance with the conditions imposed on mining leases associated with the mine under the *NSW Mining Act 1992*.

### **1.1 History of Operations**

Newcom Colliery commenced operations in 1949, producing coal for domestic supply using bord and pillar mining techniques. Angus Place commenced longwall mining in 1979, after being developed as an extension of the Newcom Mine. Angus Place was established at its current locality after Development Consent was granted by the then Blaxland Shire Council.

Angus Place Project Approval (PA) 06\_0021 was approved as a Major Project under the now repealed Section 75J Part 3A of the *NSW Environmental Planning and Assessment Act 1979* (EP&A Act) on 13 September 2006. PA 06\_0021 has since been declared a State Significant Development (SSD) under Clause 6 of Schedule 2 of the *NSW Environmental Planning and Assessment (Savings, Transitional and Other Provisions) Regulation 2017*. Accordingly, the approval is now referred to as MP 06\_0021. MP 06\_0021 has been modified on seven occasions as discussed in **Section 1.2.1**.

Following the completion of secondary extraction within Longwall 900W on 15 February 2015, care and maintenance commenced soon after at Angus Place on 28 March 2015. Some equipment has been removed from the underground workings and the surface infrastructure has been placed on an appropriate maintenance strategy to enable a reopening when the Springvale reserves have been extracted or if market conditions improve.

Kerosene Vale is located adjacent to the Angus Place to Wallerawang Power Station Haul Road. The site represents the former Newcom Colliery mine entries and surface facilities area. The Kerosene Vale Stockpile Site provides for stockpiling up to 500,000 tonnes of coal. Approximately 7 ha of previously disturbed land associated with the original Newcom Colliery Pit Top has been rehabilitated. The remaining rehabilitation requirements relate to the area currently being used for coal stockpiling and underground mine entries. Kerosene Vale and the Angus Place to Wallerawang Power Station Haul Road are located within the Angus Place colliery holding, however are approved under Springvale Coal Services SSD 5579. Accordingly, they have been discussed for operational context only. Additional detail is available in the Springvale Coal Services RMP.

The Vale of Clwydd No. 2 Colliery is a former mining operation which is located to the west of Wolgan Road, approximately 1 km north of the Angus Place Pit Top. The mine began development in 1926 and ceased operations in 1930. The site has been partially rehabilitated however there are still remnants of various derelict mine buildings present at the site.

Commonwealth Colliery is a former mining operation located approximately 3 km southwest of the site. Commonwealth Colliery operations commenced in 1940 and ceased in the 1950's. The disturbed areas of the site have been partially rehabilitated to grassland and pine forest.

## 1.2 Approved Development Information

### 1.2.1 Development Consents Granted Under EP&A Act and EPBC Act

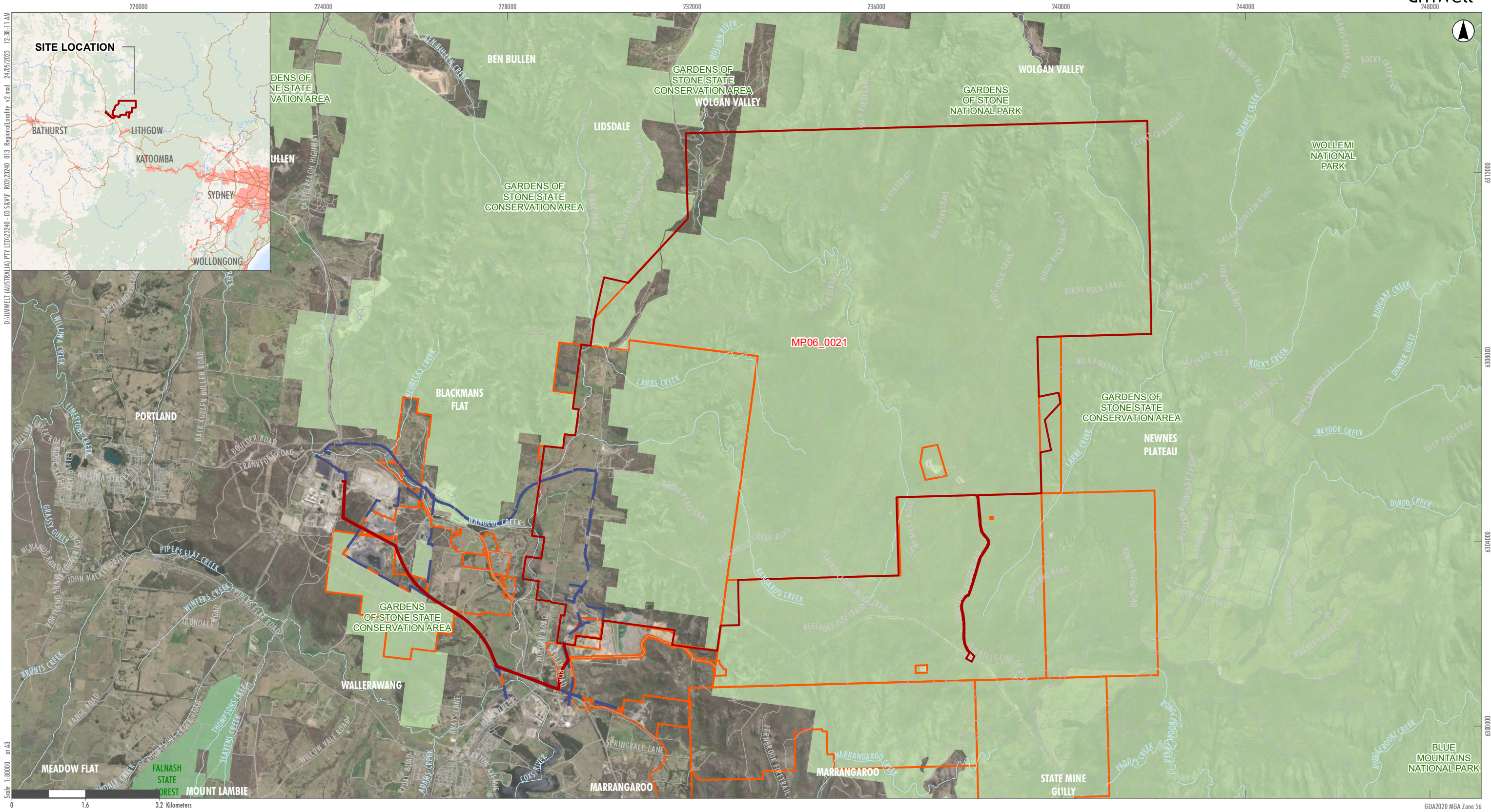
**Table 1.1** lists the Development Consents applicable to Angus Place.

MP 06\_0021 will expire on 18 August 2024. The Angus Place West Project (SSD-26254212) Environmental Impact Statement (EIS) is being prepared for continuation of operations until 31 December 2042. This application is seeking approval for the development of bord and pillar mining in two new mining areas and continued operation of the Angus Place Colliery pit top.

**Table 1.1 Development Consents**

Issuing/ Responsible Authority	Development Consent	Description	Date of Issue	Expiry
DPHI	MP 06_0021	Angus Place Proposed Mining and Coal Transport – Expand the mining area and increase the production limit to 3.5 Mtpa.	13 September 2006	18 August 2024
		Mod 1: Expanding the previously approved operations through the development and extraction of two additional longwall panels (Longwalls 900W and 910) and increased production limit to 4 Mtpa.	29 August 2011	
		Mod 2: The development of underground roadways, the construction and operation of a Ventilation Facility and supporting infrastructure, and the development of roadways eastwards of the facility to undertake trial mining.	22 April 2013	
		Mod 3: Extending the length of Longwalls 980 and 900 W, and an increase to the maximum extraction height of Longwalls 980, 900 W and 910.	9 December 2013	
		Mod 4: Continued development of first workings associated with Longwalls 1001 and 1003.	27 October 2014	
		Mod 5: Increase to mine water discharges through LDP 001.	14 September 2018	
		Mod 6: Inclusion of the Angus Place water transfer system and the construction and operation of a water softening plant.	19 March 2021	
		Mod 7: Modification to rehabilitation conditions to reflect rehabilitation reforms.	25 November 2022	
Department of Climate Change, Energy, the Environment and Water (DCCEEW)	EPBC 2011/5952	Mining of Longwalls 910 and 900 W.	April 2012	March 2032





- Legend
- Project Approval Boundary
  - Project Approval Boundary – SSD-5579
  - Railway Line
  - Road
  - Drainage Line
  - Centennial Owned Mining Leases
  - National Parks (NPWS Estate)
  - State Forest

FIGURE 1.1  
Regional Locality





Scale 1:65000 at A3

Image Source: ESRI Basemap (2021) Data source: NSW FSDF (2022), Centennial Coal (2022)

### Angus Place Site Layout



### 1.2.2 Other Relevant Development Consents

In April 2014, Springvale Coal Services (SCS) received approval of SSD 5579 from the Minister for Planning under Part 4 of the EP&A Act. Schedule 2, Condition 5 permits coal transportation and processing activities at SCS until 30 June 2039.

SSD 5579 approved SCS to undertake activities including increasing capacity to upgrade existing facilities and infrastructure to provide a total processing capacity of up to 7 million tonnes per annum (Mtpa) with up to 6.3 Mtpa of coal to be delivered to Lidsdale Siding via overland conveyor system. The consent also permitted SCS to extend and enlarge an existing reject emplacement area (REA) to enable sufficient reject disposal capacity over a 25-year life. The approval also included:

- The Kerosene Vale Stockpile Area. As this site is not associated with MP 06\_0021 it has been excluded from this Rehabilitation Strategy. Information regarding the rehabilitation of the site has been outlined within the Angus Place RMP.
- The Mount Piper Haul Road and Wallerawang Haul Road. Whilst it is Centennial's (Angus Place's) responsibility to manage the section of the Angus Place – Wallerawang Power Station Haul Road up to the end of the consolidated coal lease, the rest of the Angus Place – Wallerawang Power Station Haul Road along with the Angus Place to Mount Piper Haul Road are owned and managed by a third party. The overall haul road will remain at closure and Centennial will not be responsible for long term management.

### 1.3 Rehabilitation Strategy Requirements

Specific requirements for the completion of the Rehabilitation Strategy are outlined in Schedule 3, Condition 36C of MP 06\_0021. **Table 1.2** summarises these relevant conditions along with where the condition has been addressed within this Rehabilitation Strategy.

**Table 1.2 Rehabilitation Strategy Requirements**

Condition	Requirement	Section Addressed
MP 06_0021 Schedule 3, Condition 36C	Rehabilitation Strategy The Applicant must prepare a Rehabilitation Strategy for the development, to the satisfaction of the Secretary. The Rehabilitation Strategy must	<b>Section 1 and Appendix A</b>
	(a) be prepared by a suitably qualified and experienced person(s) whose appointment has been endorsed by the Secretary;	
	(b) be prepared in consultation with Resources Regulator, BCD, DPE Water, WaterNSW, NSW National Parks and Wildlife Service, Council and the CCC;	<b>Section 5 and Appendix B.</b>
	(c) be submitted to the Secretary for approval within 6 months of the date of determination of MP 06_0021 (MOD 7), or as otherwise agreed by the Secretary;	<b>Section 1.2 and Section 5</b>
	(d) describe the strategic rehabilitation outcomes for the site, including mine closure, final landform, post-mining land use/s and water management;	<b>Section 6 and Section 7</b>
	(e) align with the strategic rehabilitation and mine closure objectives and address the principles of the Strategic Framework for Mine Closure (ANZMEC, 2000), or its latest version;	<b>Section 4</b>
	(f) describe how rehabilitation will be integrated with the mine planning process, including a plan to address premature or temporary mine closure;	<b>Section 3 and Section 4</b>
	(g) include details of: (i) target vegetation communities and species to be established within the proposed revegetation areas; (ii) a post-mining land use strategy to investigate and facilitate post-mining beneficial land uses for the site and/or infrastructure; and (iii) stakeholder engagement plan to guide rehabilitation and mine closure planning processes and outcomes.	<b>Sections 2 and 6</b>  <b>Section 6</b>  <b>Section 5</b>
	(h) investigate opportunities to refine and improve the final landform over time.	<b>Section 8.2</b>

Condition	Requirement	Section Addressed
	Note: The Rehabilitation Strategy must address all land impacted by the development, whether prior to or following the date of this consent.	<b>Section 6 and Section 7</b>
MP 06_0021 Schedule 3, Condition 36D	The Applicant must implement the approved Rehabilitation Strategy.	Noted

Furthermore, Centennial Angus Place is proposing a new SSD project which will allow Angus Place to continue to supply coal to Mount Piper Coal Station (MPPS). The project is known as the Angus Place West Project. An EIS is currently being prepared for this project and if approved, the Angus Place Pit Top and associated infrastructure will continue to be utilised beyond 18 August 2024. This Rehabilitation Strategy will be revised in accordance with the requirements outlined in **Section 9**.

## 1.4 Rehabilitation Objectives

In accordance with Schedule 3, Condition 36B of MP 06-0021 (MOD 7), Centennial Angus Place must rehabilitate the site in accordance with the conditions imposed on the mining lease(s) associated with the project under the *Mining Act 1992*. This rehabilitation must be generally consistent with the proposed rehabilitation strategy described in the EIS and consistent with the rehabilitation outcome documents approved under the mining lease(s).

In accordance with the requirements of the NSW Rehabilitation Reforms, Centennial have developed specific rehabilitation objectives and criteria which have been included in the Angus Place RMP. These objectives and criteria will be provided to relevant stakeholders as part of the consultation program, prior to seeking approval from RR. The rehabilitation objectives and criteria will continue to be refined as required during the life of mine. This will be undertaken in consultation with relevant stakeholders and for approval by RR in accordance with NSW Rehabilitation Reform requirements.

## **2 SITE CONTEXT**

### **2.1 Land Ownership**

Most land associated with Angus Place is either Crown Land or privately-owned land. All land overlying Angus Place mining activities is Crown Land, previously managed by the Forestry Corporation of NSW (FCNSW) as part of a forestry enterprise, now the Gardens of Stone State Conservation Area which is managed by the National Parks and Wildlife Service (NPWS). The Pit Top and surface facilities are located on land owned by Centennial Fossil Fuels Pty Limited and allocated to Angus Place. Land ownership within and surrounding Angus Place is shown in **Figure 2.1**.

### **2.2 Land Use**

#### **2.2.1 Historical Land Use**

Historical land use in the area has involved mostly coal mining, steel manufacturing, other industrial enterprises and agricultural land uses. The area around Angus Place Colliery has been subject to extensive mining operations in the past, with a number of active or completed mines in the vicinity.

Wallerawang is the closest retail and commercial centre, located approximately 6 km south-west of Angus Place. The Wallerawang Power Station and the Mount Piper Power Station, owned and operated by Energy Australia (formerly Delta Electricity), are located to the south of Angus Place. However, it is noted that the Wallerawang Power Station was closed by Energy Australia in March 2015 due to decreasing demand for energy.

The Lidsdale Siding Coal Loading Facility at Wallerawang has been used as a coal storage and rail loading facility since 1974 to distribute coal by rail from Centennial Coal's western region mines to ports on the NSW coast. Lidsdale village is located to the south of the site and provides a Rural Fire Service (RFS), park amenities and a church.

Additional detail regarding historic land use within the locality can be found within the Western Region Historic Heritage Management Plan (2018).

#### **2.2.2 Current Land Use**

Land use within the Angus Place holding predominantly consists of historical and existing mining operations in the former Newnes State Forest. The former Newnes State Forest has now been designated as the Gardens of Stone State Conservation Area and will be used to protect heritage values, ecology and to promote eco-tourism. In addition to the Gardens of Stone State Conservation Area, the area supports several recreational land uses including recreation activities consisting of motorcycle riding, four-wheel driving, bushwalking, camping, mountain bike riding, canyoning, photography, bird watching and other recreational and adventure activities.

A small portion of land along the western boundary of the colliery holding is cleared and is used for agriculture. There is no intensive cropping in the area. Biodiversity offsets occur along the Cocks River within the lease area. Current land use has been shown on **Figure 2.2**.

#### **2.2.3 Proposed Land Use**

Following the cessation of mining operations at Angus Place, the Angus Place Pit Top and all rehabilitated surface facility areas on the Newnes Plateau will be rehabilitated to woodland commensurate with the adjacent remnant vegetation. In accordance with the Mod 2 Environmental Assessment (RPS 2012), the new access track from Sunnyside Road to the Ventilation Facility (APC-VS2) will be rehabilitated following the cessation of operations and the trenched infrastructure installed adjacent to existing access tracks has been rehabilitated. Some access roads and tracks on the Newnes Plateau may be retained in the final landform for monitoring, use as fire trails or access tracks by recreational users of Gardens of Stone State Conservation Area. However, unless retention for future use, including management responsibility, has been accepted by NPWS then access roads associated with mine disturbance will be rehabilitated following the cessation of mining activities.

Minor tracks at the Pit Top will also be retained in the final landform for future access and monitoring. The final land use for these areas will be 'environmental protection works' which is consistent with the surrounding land use of forestry within the former Newnes State Forest. Additionally, the final land use aligns with the current Lithgow Local Environmental Plan (LEP) 2014 and the Lithgow Land Use Strategy 2010 – 2030. However it is noted that land zoning under the Lithgow Local Environmental Plan is anticipated to change in the near future to C1 – National Parks and Nature Reserves to align with the Gardens of Stone State Conservation Area.

The Gardens of Stone State Conservation Area was formally proclaimed on 6 May 2022. The State Conservation Area encompasses the Newnes Plateau (as Newnes State Forest), Ben Bullen State Forest, Wolgan State Forest as well as other crown lands. Centennial is committed to work collaboratively with NPWS to achieve the objectives for the State Conservation Area.

The water management structures at the Angus Place Pit Top will be retained in the post-mining landform to provide water resources for any fauna habiting the Pit Top. The *Angus Place Colliery 75W Modification Rehabilitation Strategy* (GSSE, 2010), specified that dams and water structures can remain in the final landform where specific structures have been constructed for the storage of water as required for sediment and erosion control or some post-mining land use.

Commonwealth Colliery and Vale of Clwydd No. 2 will be rehabilitated to the satisfaction of the Resources Regulator in accordance with the conditions of Consolidated Coal Lease (CCL) 704.

### **2.3 Natural Features and Topography**

Angus Place is in an area of significant topographical variation and can be divided into the Newnes Plateau and areas of lower elevation in Wolgan Valley and the Cocks River valley west of Angus Place.

Topography within the Newnes Plateau comprises narrow gorges with high undulating ridgelines and sandstone cliffs. The cliffs rise above incised valleys and hilly areas with relatively flat crests and some spurs with moderately sloped ephemeral drainage lines. The Newnes Plateau encompasses most land associated with Angus Place, which forms part of the divide between the Wolgan River and Cocks River catchments.

Relatively open and flat valleys of the upper Cocks River and tributaries characterise the Angus Place Pit Top area.

Site elevation varies from over 1,100 m Australian Height Datum (AHD) on the Newnes Plateau to approximately 900 m AHD in the south-west of the site.

### **2.4 Existing Vegetation**

Angus Place is part of a larger contiguous area of native vegetation comprising of various woodland and forest types, non-native vegetation (e.g. exotic pasture), pine plantation and interspersed with swamps and watercourses. These swamps comprise of both shrubs swamps that occur in valley floors and hanging swamps that occur on hillsides.

Vegetation communities mapped within the Angus Place area are presented in **Figure 2.3**.



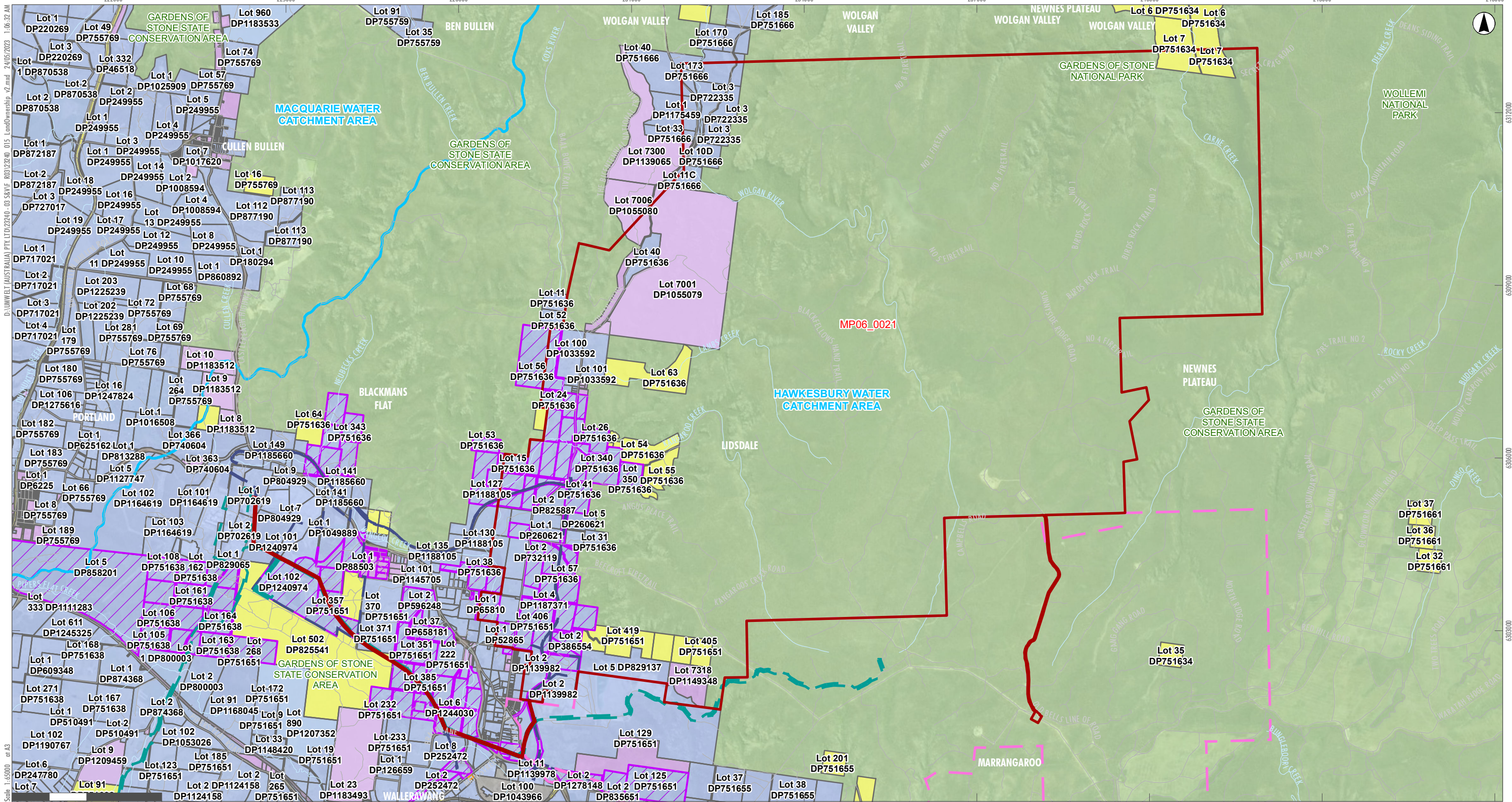


FIGURE 2.1

Land Ownership



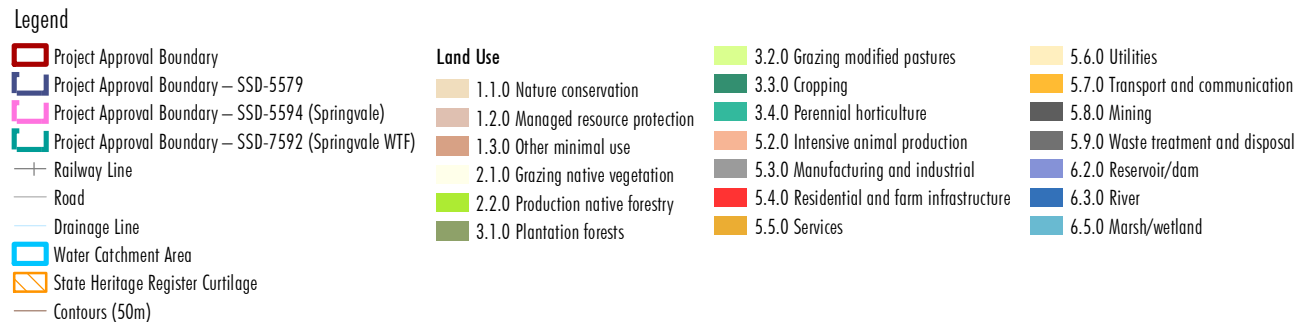
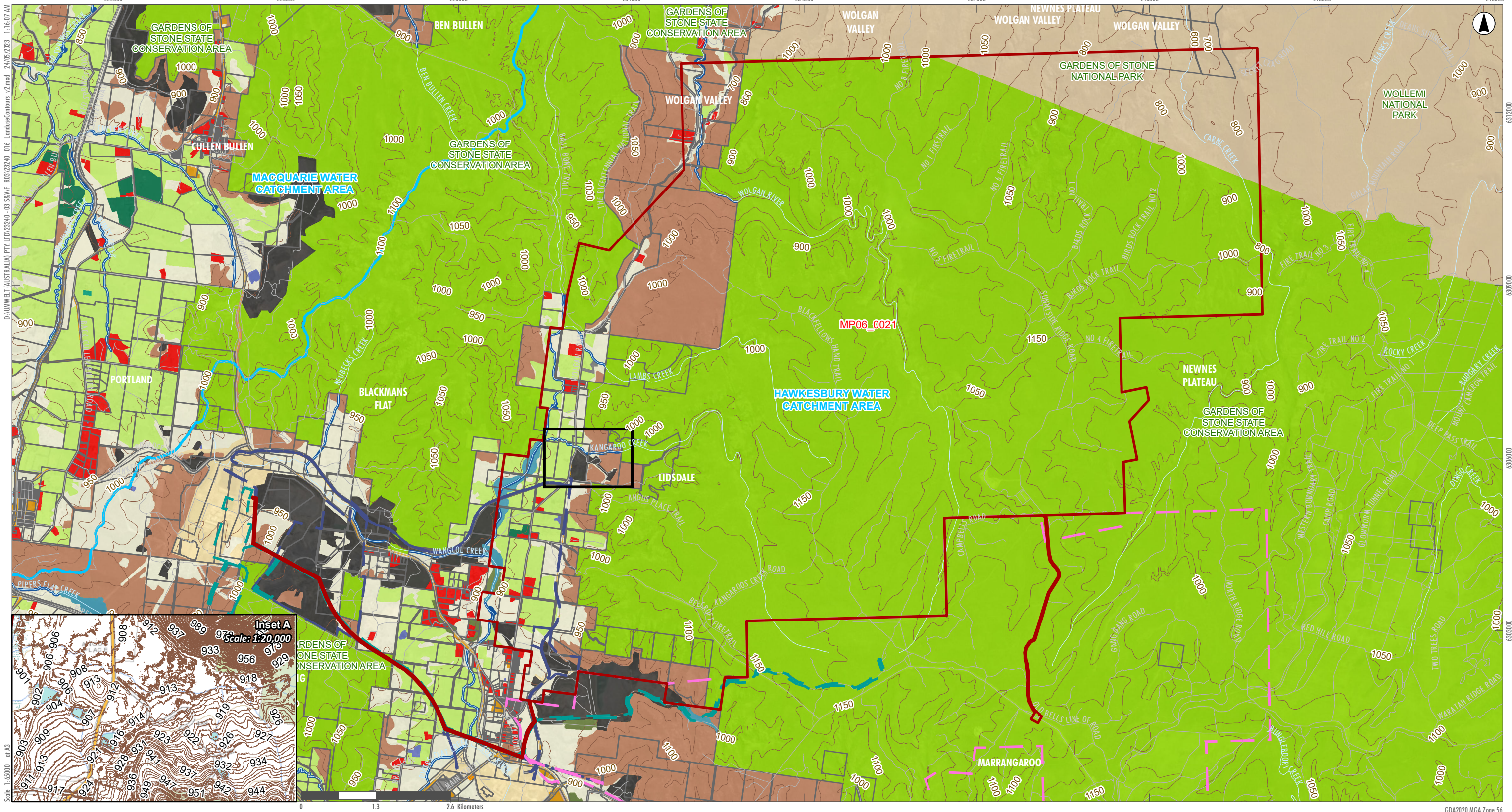


FIGURE 2.2  
Land Use



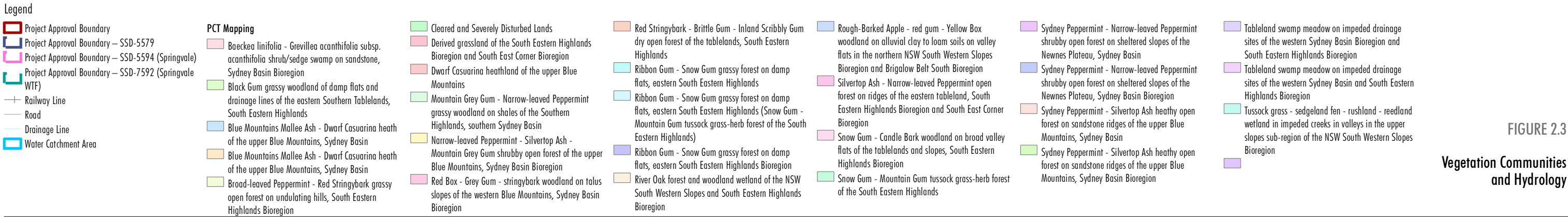
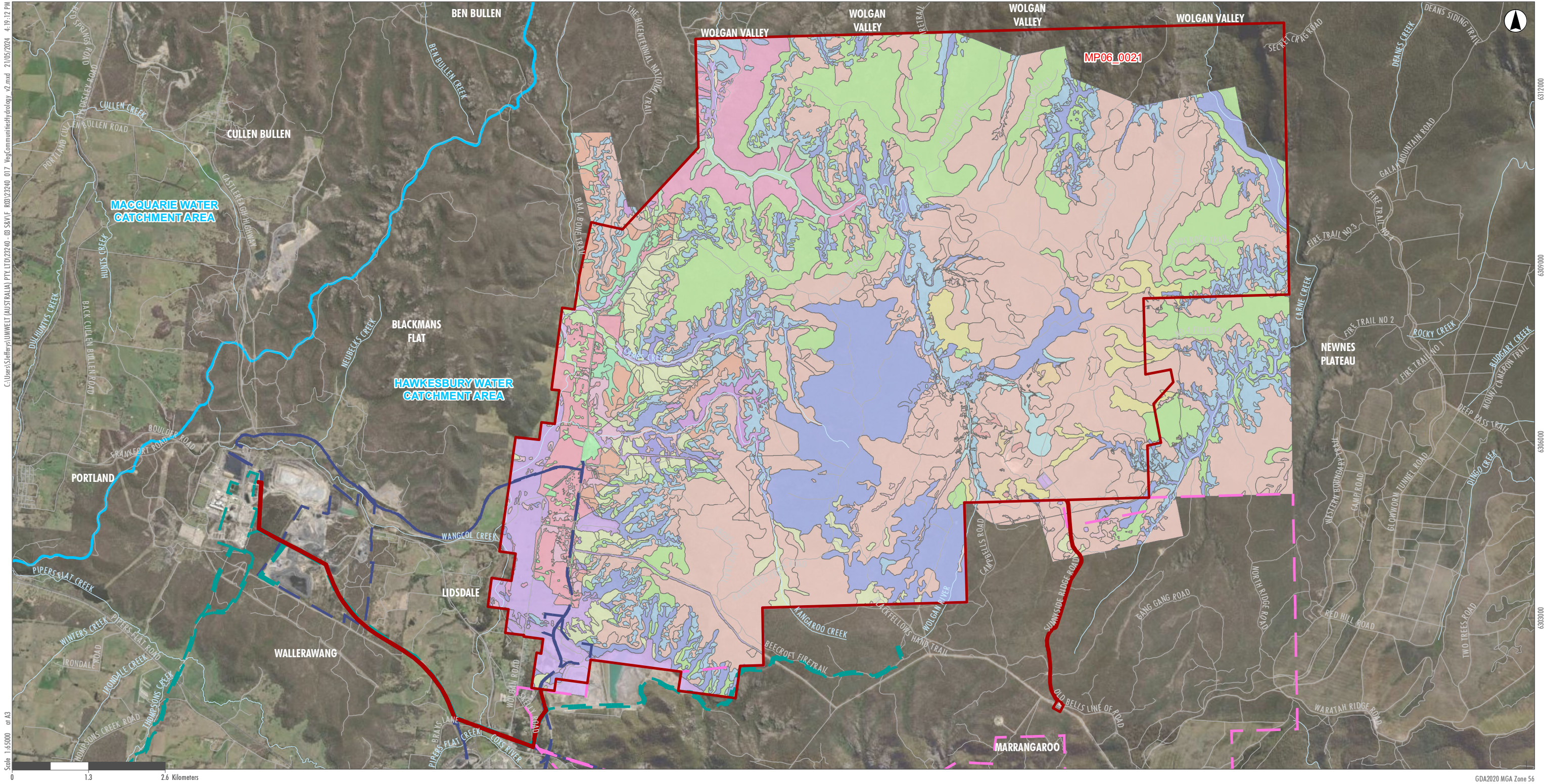


FIGURE 2.3

Vegetation Communities and Hydrology



## 2.5 Regulatory Context

The regulatory requirements specific to post-mining land use and rehabilitation outcomes at Angus Place are summarised in **Table 2.1**.

**Table 2.1 Regulatory Requirements**

Condition	Requirement	Applicable Areas	Section Addressed
MP 06_0021 Schedule 2, Condition 1	The Applicant must implement all practicable measures to prevent and/or minimise any harm to the environment that may result from the construction, operation, or rehabilitation of the project.	MP 06_0021 Project Application Area	<b>Section 7.1</b>
MP 06_0021 Schedule 3, Condition 36	The Proponent shall prepare a Mine Closure Strategy for the project, to the satisfaction of the Director-General. The Strategy shall be prepared in consultation with Council, DRE, SCA and EPA, and be submitted to the Director-General at least 3 years prior to the cessation of mining. The Plan must: <ul style="list-style-type: none"> <li>a) define the objectives and criteria for mine closure;</li> <li>b) investigate options for the future use of the site, including the Pit Top and surface facilities area;</li> <li>c) investigate ways to minimise the adverse socio-economic effects associated with mine closure, including reduction in local employment levels;</li> <li>d) define a strategy for the ongoing management of water flow into the underground mine workings;</li> <li>e) describe the measures that would be implemented to minimise or manage the ongoing environmental effects of the project; and</li> <li>f) describe how the performance of these measures would be monitored over time.</li> </ul>	MP 06_0021 Project Application Area	<b>Section 4</b>
MP 06_0021 Schedule 3, Condition 36A	The Applicant must rehabilitate the site as soon as reasonably practicable after the disturbance occurs.	MP 06_0021 Project Application Area	<b>Section 7</b>
MP 06_0021 Schedule 3, Condition 36B	The Applicant must rehabilitate the site in accordance with the conditions imposed on the mining lease(s) associated with the development under the Mining Act 1992. This rehabilitation must be generally consistent with the proposed rehabilitation strategy described in the documents listed in condition 2 of Schedule 2, and consistent with the rehabilitation outcome documents approved under the mining lease(s).	MP 06_0021 Project Application Area	<b>Section 1.4 and Section 7</b>
MP 06_0021 Schedule 3, Condition 37	The Applicant must prepare and implement a Rehabilitation Management Plan for the project, in accordance with the conditions imposed on the mining lease(s) associated with the project under the Mining Act 1992.	MP 06_0021 Project Application Area	Angus Place RMP
Mod 1 EA – Angus Place Colliery Rehabilitation Strategy	Angus Place Colliery is required, where necessary, to return any land disturbed due to exploration or mining activities, to a capacity which was present pre-mining. The current approved MOP for Angus Place Colliery sets out specific rehabilitation objectives. These objectives are listed as follows: <ul style="list-style-type: none"> <li>· Rehabilitation and the outcomes will be consistent with the Environmental Assessment which formed the basis for any approvals;</li> </ul>	MP 06_0021 Project Application Area	<b>Sections 1.4, 4, 6 and 7</b>

Condition	Requirement	Applicable Areas	Section Addressed
	<ul style="list-style-type: none"> <li>· Rehabilitation will be based on mine closure criteria and outcomes developed through stakeholder consultation;</li> <li>· Compliance with the relevant regulatory requirements and that regulatory consensus is attained on the successful closure and rehabilitation of the site;</li> <li>· Rehabilitation of native vegetation will be integrated with undisturbed native vegetation to provide consolidated areas and wildlife corridors where possible;</li> <li>· The site will be rehabilitated to an agreed final land use compatible with the surrounding land fabric and land use requirements;</li> <li>· The rehabilitation process will address limitations of land capability that may arise as a consequence of mining;</li> <li>· The rehabilitation will be sustainable in terms of selected final land use;</li> <li>· The rehabilitated site will be stable with permanent landforms with soils, hydrology and ecosystems having maintenance needs no greater than those of the surrounding land;</li> <li>· Waste substances that have the potential to affect land use or result in pollution will be secured and safely contained;</li> <li>· The rehabilitated site will not present a hazard to persons, stock or native fauna;</li> <li>· The site will be clean and tidy and any remaining structures will be left in a condition that provides for the safety of the public; and</li> <li>· Mine closure works are completed as quickly and cost effective as possible whilst providing that the above objectives are achieved.</li> </ul>		
Mod 1 EA – Angus Place Colliery Rehabilitation Strategy	Within the Project Area there are several infrastructure items that need to be constructed as part of the proposed mine extension works. The key items to be constructed are access tracks, powerlines, a bore for dewatering, and extension of the Delta Water Transfer Scheme. Should there be any impact from mining, rehabilitation works will be required to be undertaken. Further, at mine closure these infrastructure areas will also be required to be fully rehabilitated. This will firstly involve removing any physical items from these areas prior to the re-establishment of vegetation.	MP 06_0021 Project Application Area	<b>Sections 2.2.3, 6 and 7</b>
Mod 1 EA – Angus Place Colliery Rehabilitation Strategy	<p>Surface Water Drainage</p> <p>Use of contour banks and diversion drains to direct water into stable areas or sediment control basins. All landforms will be free draining except where specific structures (i.e. LDP003) have been constructed for the storage of water as required for sediment and erosion control or some post mining land use.</p>	MP 06_0021 Project Application Area	<b>Sections 2.2.3, 6 and 7</b>

### 3 LAND MANAGEMENT AND REHABILITATION

As an underground coal mine, infrastructure at Angus Place is required throughout the life of mine. Subsequently, land associated with key surface infrastructure will not become available for rehabilitation until the cessation of mining operations. **Sections 3.1 – 3.4** provide details regarding key relevant activities at Angus Place.

#### 3.1 Water Management Areas

Final landform drainage will integrate with surrounding catchments and will achieve long term geomorphic stability and minimise erosion. Water management structures will be constructed in accordance with *Managing Urban Stormwater: Soils and construction (the Blue Book) Volume 1* (Landcom, 2004).

The network of dams and associated water management infrastructure at Angus Place Pit Top will not be decommissioned at the end of mine life but will be maintained for future use. The water storages will provide a valuable water resource to surrounding fauna and an asset to the final land use.

Water storages associated with infrastructure sites on Newnes Plateau will be rehabilitated to achieve final landforms that are safe, stable, non-polluting and free-draining.

Further information regarding rehabilitation of water management areas across Angus Place is detailed within the Angus Place RMP.

#### 3.2 Exploration

Exploration activities are undertaken in accordance with the requirements of the *Exploration Code of Practice: Rehabilitation*. Disturbance from previous exploration activities will be rehabilitated prior to mine closure. All exploration drill holes will be sealed in accordance with relevant RR guidelines at the time.

Completed and proposed exploration and/or groundwater monitoring activities will be reported in the Annual Review and Annual Rehabilitation Report.

Following the completion of rehabilitation and prior to lease relinquishment, Angus Place will submit a Rehabilitation Completion form to RR. This report will include details to demonstrate that rehabilitation has been completed and complies with mining tenement requirements.

#### 3.3 Subsidence Management

Angus Place undertakes management and monitoring of subsidence resulting from secondary extraction in accordance with The Longwalls 900W and 910 Subsidence Management Plan (SMP)/Extraction Plan, which was developed in accordance with relevant conditions of MP 06\_0021 and mining tenements. It is noted that Angus Place has been in care and maintenance since 28 March 2015 and therefore no underground mining has been undertaken since this time. Should subsidence impacts occur to surface features, remediation and rehabilitation will be undertaken in accordance with the approved SMP/Extraction Plan.

Should mining operations recommence at Angus Place, all secondary extraction would be in accordance with an approved Extraction Plan.

Further information regarding subsidence-specific rehabilitation objectives and risks across Angus Place is detailed within the Angus Place RMP.

#### 3.4 Infrastructure

Infrastructure includes existing infrastructure and facilities at the Pit Top and on the Newnes Plateau including workshops, administration buildings, pipelines (trenched), substations, car parks, access roads, hardstand/laydown areas, underground infrastructure including mine access, ventilation shafts, dewatering bore facilities and associated water management structures. All sealing of mine openings (e.g. shafts, drifts) will be sealed in accordance with relevant RR guidelines.

All infrastructure to be decommissioned and the associated activities prior to rehabilitation can be found in **Table 3.1**.

**Table 3.1 Infrastructure to be Decommissioned**

Major Asset	Demolition/Rehabilitation Activities
<b>Pit Top Infrastructure</b>	
Administration buildings	Disconnect services; demolish and remove infrastructure; and remove concrete pads.
Sewage treatment and irrigation facilities	Disconnect services; demolish and remove water treatment plant; remove concrete pads; remove potentially contaminated material.
Coal crushing and screening plant	Disconnect and terminate all services; demolish and remove buildings; demolish and remove coal crushing and screening plant; remove carbonaceous material.
Coal stockpile	Remove carbonaceous material.
Main workshops area, bathhouse, service buildings and storage sheds	Disconnect services; demolish and remove small buildings; remove concrete pads; remove potentially contaminated material; on site remediation of contaminated soil.
Hardstand/Laydown Areas	Remove plant and material; and remove concrete pads.
Access roads	Remove roadside markers/signs; and remove bitumen.
Visitor and employee parking areas	Remove concrete pads, footings and bitumen.
Portals	Sealed in accordance with relevant RR guidelines.
Ventilation Facilities (APC-VS1)	Sealed in accordance with relevant RR guidelines.
Personnel and materials drift	The drift will be filled with non-contaminated materials.
Coal conveyor drift and coal conveyor drive	Demolish and remove conveyors and gantries.
Electrical distribution network comprising Substation 0 (located at Lidsdale) and Substations 1 – 3	Remove substation transformers and/or switchyards. Concrete pads belonging to substations would also be removed.
Services boreholes	Seal with an appropriately designed and engineered plug reinforcement that complies with relevant construction standards and RR guidelines.
Vale of Clwydd No. 2 Air Shaft	Shaft will be decommissioned and sealed in accordance with RR guidelines.
Water tanks	Demolish and remove tanks. Any concrete pad or other footings that support these tanks would be removed.
Diesel tank	Demolish and remove tanks; remove potentially contaminated material; on site remediation of contaminated soil. Any concrete pads or other footings that support these tanks would be removed.
D1 ML Mine Water Tank	Demolish and remove tank. Any concrete pads or other footings that support these tanks would be removed.
Dewatering boreholes from underground working	Seal with an appropriately designed and engineered plug reinforcement that complies with relevant construction standards and RR guidelines.
Water Transfer Pipelines	Remove all infrastructure associated with the pipeline which is accessible above ground to ensure the landform adjacent to the pipeline is safe and non-polluting.
Pump Station	Pumps, or associated infrastructure not required to be maintained will be removed (or marked on plans where left in-situ by agreement with the RR and/or landholder).
Geotechnical bores	Seal with an appropriately designed and engineered plug reinforcement that complies with relevant construction standards and RR guidelines.
<b>Newnes Plateau Infrastructure</b>	
Service buildings and material storage sheds	Disconnect services; demolish and remove small buildings; remove concrete pads; remove potentially contaminated material; on site remediation of contaminated soil.

Major Asset	Demolition/Rehabilitation Activities
Hardstand areas	Remove plant and material; and remove concrete pads.
Ventilation Facility (APC-VS2)	Remove ventilation fans and equipment; backfill and seal shafts; construct engineered plug; disconnect services; demolish and remove infrastructure; and remove concrete pads.
930 and 940 Dewatering Borehole Facilities	Remove dewatering bore and compounds and grout with concrete, cap and seal in accordance with RR guidelines.
Service boreholes	Seal with an appropriately designed and engineered plug reinforcement that complies with relevant construction standards and RR guidelines.
Substations and switchyard	Remove substation transformers and switchyard. Concrete pads belonging to substations and the switchyard would be removed.
Monitoring infrastructure (piezometers, weirs and transducers, seismometers, survey markers)	Piezometers will be decommissioned in accordance with relevant RR requirements; surface water monitoring devices (e.g. transducers) will be decommissioned and removed; subsidence survey markers will be decommissioned and removed; boreholes will be sealed in accordance with RR requirements.
Trenched power cables	Trenched power cables will be isolated, left in-situ and made safe in accordance with the relevant guidelines.
Trenched water pipelines	Trenched pipelines will be isolated, left in-situ and made safe in accordance with the relevant guidelines.
Tanks	Demolish and remove tanks. Concrete pad or other footings that supports these tanks would also be removed.
<b>Other infrastructure</b>	
Coal stockpile and infrastructure/derelict buildings at Kerosene Vale	Disconnect services; demolish and remove small buildings; remove carbonaceous material; remove concrete pads; remove potentially contaminated material; on site remediation of contaminated soil.
Dams including the Settling Ponds, Filter Pond, Secondary Pollution Pond, Primary Pollution Ponds, LDP001 and constructed wetlands, Aerating Ponds and dewatered and the Oxidation Ponds	Where required by sampling, drain and remove contaminated sediments from the floor of the dam to enable it to be converted into a clean water structure.

As required by relevant development consent conditions for Angus Place, all demolition work on site is carried out in accordance with Australian Standard AS 2601-2001: *The Demolition of Structures*, or its latest version.

In addition, the rehabilitation works would be completed in consultation with NPWS (or the prevailing landowner at the time of rehabilitation) to ensure landowner sign-off can be achieved.



## 4 MINE CLOSURE PLANNING

### 4.1 Strategic Framework for Mine Closure

The strategic rehabilitation and mine closure objectives are discussed in **Sections 1.4, 6 and 7**. The Rehabilitation Strategy also addresses the six key objectives of the Strategic Framework for Mine Closure (Strategic Framework) (ANZMEC and MCA, 2000). The objectives of the Strategic Framework are described in **Table 4.1**, with a description of how each is addressed within this Rehabilitation Strategy.

Centennial will develop an internal Mine Closure Standard. The internal Mine Closure Plan will be prepared in accordance with the Mine Closure Standard. The RMP, Mine Closure Strategy and this Rehabilitation Strategy will be reviewed and updated as required by the NSW Rehabilitation Reforms and by SSD-5594.

**Table 4.1 Strategic Framework for Mine Closure Objectives**

Strategic Framework Objective	Strategic Framework Principle	Relevance for Angus Place
1. Stakeholder Involvement: to enable all stakeholders to have their interests considered during the mine closure process.	1.1 Stakeholder Identification	Relevant stakeholders are outlined in <b>Sections 5.3 and 5.4</b> . These include statutory authorities, community groups and staff. Company management, including shareholders will also be consulted with regards to closure. Stakeholders will continue to be reviewed throughout operations at Angus Place.
	1.2 Effective Consultation	Formal community consultation occurs via the Community Consultative Committee (CCC) (refer <b>Section 5.2</b> ), activities as outlined in the Angus Place Stakeholder Engagement Plan (SEP)/project specific SEPs, collaborative development of management plans with statutory authorities and the Centennial website. A targeted mine closure SEP will be prepared within five years of the planned cessation of operations, as outlined in <b>Section 5.1.2</b> .
	1.3 Targeted Communication Strategy	Established consultation frameworks are tailored to suit the target audience, whether it be staff, statutory authorities or community groups. Within five years of the anticipated cessation of operations, a project specific mine closure SEP will be developed as outlined in <b>Section 5.1.2</b> . The mine closure SEP will include but not be limited to the specific engagement approach, timing, resources and key responsibilities.
	1.4 Adequate Resources	Adequate resources are provided to facilitate effective consultation, which falls under the responsibility of the Environment and Community Manager and is approved by the Mine Manager.
	1.5 Working with Communities	Recent community engagement has been focused on discussions regarding post mining land use, and potential for future employment and economic benefit. Additional detail is provided in <b>Section 5.0</b> .
2. Planning: to ensure the process of closure occurs in an orderly, cost-effective and timely manner.	2.1 Integration	Life of mine (LOM) planning is a critical component of business planning. During the operational phases, this is used to effectively plan for mining activities. When the LOM enters five years prior to the cessation of planned operations, the focus of the planning will shift to consider mine closure planning.  Centennial consider mine closure throughout all stages of operations, to set realistic expectations, avoid unforeseen costs and capitalise on available strategies. The progressive revisions to the RMP and rehabilitation risk assessment, as required under the NSW Rehabilitation Reforms, ensure the continual improvement of knowledge prior to the cessation of operations.
	2.2 Risk-based Approach	The RMP includes a comprehensive risk assessment to reduce uncertainty for closure and rehabilitation, which will be reviewed in accordance with NSW Rehabilitation Reform requirements, including to reflect changes to operations over time (e.g. closure and rehabilitation). RMP revisions and risk assessment reviews will promote additional investigations where required to mitigate identified risks.

Strategic Framework Objective	Strategic Framework Principle	Relevance for Angus Place
	2.3 Closure Plans	The Mine Closure Strategy is in draft at the time of these Rehabilitation Strategy revisions. The RMP, this Rehabilitation Strategy and the Mine Closure Strategy will be reviewed and updated as required by the NSW Rehabilitation Reforms and by MP 06_0021, throughout the life of operations at Angus Place. Within five years prior to the planned cessation of operations, Centennial will develop an internal Mine Closure Plan for Angus Place. This internal document will be used to inform closure activities for the site. Following completion of the Mine Closure Plan and supporting specialist assessments, the RMP, Mine Closure Strategy and this Rehabilitation Strategy will be revised.
	2.4 Closure Feasibility	The RMP and Mine Closure Strategy describe the technical feasibility of mine closure. The Rehabilitation Cost Estimate (RCE) is updated regularly in accordance with the NSW Rehabilitation Reforms to reflect the current status of rehabilitation and disturbance (refer <b>Section 4.3</b> ), resulting in a suitable rehabilitation bond being in place for unexpected closure.  Prior to the anticipated cessation of operations, a Social Impact Assessment will be developed in accordance with the <i>Social Impact Assessment Guideline</i> (DPHI, 2023).
	2.5 Regular and Critical Review	As required, relevant documents will be reviewed and if necessary, revised as described in <b>Section 9</b> . The RMP and rehabilitation risk assessment will continue to be reviewed in accordance with the NSW Rehabilitation Reforms.
3. Financial Provision: to ensure the cost of closure is adequately represented in company accounts and that the community is not left with a liability.	3.1 Cost Estimate	As described in <b>Section 4.3</b> , a RCE is prepared using the tool provided by RR. This includes provision for progressive rehabilitation, final closure activities, environmental monitoring and maintenance activities.
	3.2 Regular Review	The RCE is regularly updated as required by the RR, to accurately reflect the extents of disturbance and rehabilitation, knowledge obtained by detailed design/specialist assessments and the approved Final Landform and Rehabilitation Plan (FLRP). The RR RCE Tool is reviewed every 3 years to ensure rates are appropriately benchmarked.
	3.3 Financial Provision	The RCE determines the value of security deposit to be held by the RR, this is in the form of a bank guarantee, cash, bond or another suitable form as deemed appropriate by the Secretary. This process helps to ensure adequate securities are maintained.
	3.4 Accepted Accounting Standards	
	3.5 Adequate Securities	
4. Implementation: to ensure there is clear accountability, and adequate resources, for the implementation of the closure plan.	4.1 Accountability for Closure	Within five years of the anticipated cessation of operations, a Mine Closure Plan will be prepared, along with supporting specialist assessments. This document, and the subsequent Closure RMP will include descriptions of roles, responsibilities and key accountabilities for closure implementation.
	4.2 Adequate Resources	As described above, provision of adequate resources is based on a security deposit, which is informed by the RCE. The RCE accuracy will continue to be refined during closure planning.
	4.3 On-going Management	Anticipated post-closure management and monitoring is described in the RMP, and includes rehabilitation maintenance (e.g. weed control), appropriate monitoring and adaptive management until relinquishment. This is also captured within the RCE via contingencies and site-specific costs as required.
	4.4 Closure Business Plan	Life of mine planning is used by Centennial to address planned business costs, revenues, profit/loss and cash flow. Closer to the anticipated cessation of operations, the business plan/life of mine plan will shift focus to closure, and include a schedule of actions, responsibilities, resources and timeframes.
	4.5 Closure Implementation	Although a Mine Closure Strategy is currently being prepared, mining infrastructure at the site remains in use until the cessation of mining, and timing for mine closure implementation is based on the anticipated cessation of operations in 2042. In the event of temporary or premature mine closure, measures are described in <b>Section 4.3</b> .

Strategic Framework Objective	Strategic Framework Principle	Relevance for Angus Place
5. Standards: to establish a set of indicators which will demonstrate the successful completion of the closure process.	5.1 Legislation	This Rehabilitation Strategy, the RMP and Mine Closure Strategy consider relevant legislation and industry standards. The documents will continue to be revised in accordance with NSW Rehabilitation Reforms and MP 06_0021 requirements, throughout the life of operations at Angus Place.
	5.2 Standards	
	5.3 Completion Criteria	The rehabilitation objectives statement and final landform and rehabilitation plan were approved by the RR on 30 October 2023. The associated rehabilitation completion criteria statement is currently in draft. Approval of rehabilitation completion criteria will be sought in accordance with NSW Rehabilitation Reform requirements (refer <b>Section 5.1.2</b> ).
	5.4 Environmental Indicators	Environmental, or performance indicators are incorporated into completion criteria, as described above.
	5.5 Targeted Research	Where there is high uncertainty regarding closure feasibility, targeted research programs may be implemented, and will be described in the RMP, Annual Review, Annual Rehabilitation Report and Forward Program.
6. Relinquishment: to reach a point where the company has met agreed completion criteria to the satisfaction of the Responsible Authority.	6.1 Responsible Authority	The relinquishment process is dependent upon achieving the approved final land use and satisfying approved rehabilitation objectives and rehabilitation completion criteria. Relinquishment of a lease or an identified part of the lease is approved by the RR.
	6.2 Relinquishment	
	6.3 Record Retention	Rehabilitation records will be maintained in accordance with NSW Rehabilitation Reform requirements.

## 4.2 Integration with Mine Closure Planning Process

In accordance with the Strategic Framework for Mine Closure (ANZMEC, 2000), Angus Place will commence the detailed mine closure planning process at least five years prior to the anticipated mine closure date (i.e. the planned cessation of mining). Based upon current development consent, mining operations at Angus Place will cease in 2024. However, it is noted that the Angus Place West Project (SSD-26254212) EIS is being prepared for continuation of operations until 31 December 2042, and highlights the socio-economic benefits of continued mining. Building on the Mine Closure Strategy (currently in draft) and as indicated in **Table 4.2**, mine closure planning (based on the anticipated cessation of operations in 2042) will include the following:

- Stakeholder consultation regarding mine closure will commence five years prior to planned closure of the mine to assist in minimising long-term impacts associated with mine closure, including socio-economic impacts;
- An agreed detailed mine closure plan will be developed at least two years prior to the anticipated mine closure date;
- An infrastructure demolition plan will be developed within two years of mine closure; and
- The Closure RMP will be made available on the Centennial website, and a revised Mine Closure Strategy and Rehabilitation Strategy will be submitted to the appropriate regulatory agencies for approval within two years prior to cessation of mining.

It is recognised that the dynamic nature of closure planning requires regular and critical review to reflect changing circumstances (ANZMEC, 2000). Accordingly, this Rehabilitation Strategy will be progressively reviewed along with the Angus Place Mine RMP throughout the life of mine, particularly as the operation moves to within five years of planned closure, after which a detailed mine closure plan will be prepared for internal closure implementation.

Although Angus Place are within five years of approved activities under MP 06\_0021, opportunities to extend the life of mine are being actively progressed and have subsequently deferred the mine closure planning process.

An indicative closure timeline is shown in **Table 4.2**, including the key rehabilitation and closure activities that will be required. The key phases of closure considered in this timeline include:

- Planning;
- Closure execution (the decommissioning and rehabilitation phases);
- Maintenance and monitoring; and
- Relinquishment.

Table 4.2 Indicative Mine Closure Timeline

Years from Closure	Closure Planning					Decommissioning and Rehabilitation				Monitoring and Maintenance				Relinquish ment	
	-5	-4	-3	-2	-1	1	2	3	4	5	6	7	8	9	10
<b>Closure Planning</b>															
Stakeholder consultation regarding closure															
Agreed Detailed Mine Closure Plan															
Develop Closure RMP															
Develop an infrastructure demolition plan															
<b>Closure Execution</b>															
Demolition of infrastructure															
Landform establishment															
Growth medium development															
Ecosystem establishment															
Ecosystem development															
<b>Post Closure Activities</b>															
Maintenance of rehabilitated areas															
Monitoring and inspections															
<b>Post Relinquishment Activities</b>															
Management of residual risk															

### 4.3 Temporary or Premature Mine Closure

The Rehabilitation Cost Estimate (RCE) prepared for Angus Place has been calculated to undertake the necessary works to achieve the desired final land use if the operation were to cease (i.e. a close now scenario). In accordance with the *Guideline: Rehabilitation Cost Estimate* (RR 2022), the RCE has been prepared based upon a “snapshot of current disturbance”. The RCE provides for:

- Decommissioning and demolition of all surface infrastructure;
- Rehabilitation of all areas disturbed by mining as depicted, except for areas to be retained for post-mining uses; and
- Mobilisation costs, project management and contingencies.

This mechanism also provides a level of assurance of satisfactory rehabilitation outcomes in the event of temporary or premature closure of the mine. Additionally, as an underground mine most of the mine area will not be disturbed, and disturbance areas are progressively rehabilitated.

In the event of temporary or premature closure, this Rehabilitation Strategy, the Mine Closure Strategy and the RMP would be revised and implemented.

## **5 STAKEHOLDER CONSULTATION**

### **5.1 Stakeholder Engagement Plans**

All Centennial mines maintain and implement an internal Stakeholder Engagement Plan (SEP) for each site, providing a framework to guide stakeholder engagement, satisfy legislative requirements and meet stakeholder expectations. Certain projects (e.g. consent modifications, new approvals, mine closure) and certain activities (e.g. exploration, Extraction Plan development) will require a separate and more comprehensive SEP.

The project specific SEP will be developed as needed and provides a level of detail about the activity as well as the specific components of engagement, including relevant stakeholders, timing, frequency, resources, engagement activities etc. The structure of the project specific SEP will be developed as required and structured to reflect the scope of the project and reflect the area of social influence.

#### **5.1.1 Angus Place Stakeholder Engagement Plan**

The current Angus Place SEP includes a comprehensive list of stakeholders for the mine (refer **Sections 5.3 and 5.4**). Engagement activities described in the SEP include:

- Continued engagement with the Community Consultative Committee (CCC) (refer **Section 5.2**);
- Contribution to the Western Regional Aboriginal Cultural Heritage Aboriginal Advisory Group twice per year, facilitating the involvement of Registered Aboriginal Parties (RAP's) in post-mining surveys and other areas of interest as required or requested;
- Regular review and updates for all Land Access Agreements where required, for inclusion in the site spatial database;
- Regular review and update where required for all Negotiated Agreements, for inclusion in the site spatial database; and
- Provision of environmental monitoring outcomes to the adjacent landholders.

Recent community engagement has been focused on discussions regarding post mining land use, and potential for future employment and economic benefit.

#### **5.1.2 Project Specific Stakeholder Engagement Plans**

Angus Place is developing a project specific SEP to facilitate stakeholder consultation for the operations rehabilitation objectives and completion criteria, in accordance with the requirements of the NSW Rehabilitation Reforms. This document will detail Angus Place's relevant stakeholders as outlined in the *Guideline: Rehabilitation Objectives and Rehabilitation Completion Criteria* (RR, 2023), the strategies used to communicate with them and provide the foundation for working with those stakeholders prior to and during the mine closure process. Relevant stakeholders include anyone who may be affected by the mining operations, including rehabilitation, carried out on the lease land such as:

- The relevant development consent authority or local council;
- The relevant landholder;
- CCC;
- Affected landholders;
- Government agencies relevant to the final land use;
- Affected infrastructure authorities (electricity, telecommunications, water, pipeline, road, rail authorities);
- Local Aboriginal communities;
- Any other person determined by the Minister to be a relevant stakeholder in relation to a mining lease.

In accordance with the NSW Rehabilitation Reforms, the rehabilitation completion criteria statement must be submitted to the RR for approval three years before rehabilitation of the whole (or an identified part) of the mining area is proposed to be completed.

A specific mine closure SEP will be developed within 5 years of the planned cessation of operations. The mine closure SEP will include relevant stakeholders, proposed engagement activities, details of engagement timing and frequency. The mine closure SEP may be included within the internal Mine Closure Plan, however an overview of the mine closure SEP will be included in future revisions of this Rehabilitation Strategy. The Angus Place SEP and project specific SEPs are regularly revised to reflect operational/project requirements and the outcomes of ongoing engagement.

## **5.2 Community Consultation Committee**

In accordance with Schedule 5, Condition 5 of MP 06\_0021, a Community Consultative Committee (CCC) has been established to monitor the operations and provide a forum whereby the community can communicate with the mine operators and be kept up to date with the progress of the mine. For Angus Place, this has included consultation with regards to obligations under the NSW Rehabilitation Reforms.

In 2012 the established Angus Place CCC was combined to also include Springvale. Furthermore, in October 2014 the CCC was also expanded to include Springvale Coal Services. The combined Angus Place, Springvale and Springvale Coal Services CCC facilitates a single channel of communication about the current mining operations in the area.

The formation of the Springvale and Angus Place CCC was approved by DPHI in 2012. The combined Angus Place, Springvale and Springvale Coal Services CCC was approved by DPHI in 2016. The CCC is operated in accordance with the *Guidelines for Establishing and Operating Community Consultative Committees for Mining Developments* (Department of Planning 2007) with meetings held regularly.

## **5.3 Statutory Authority Consultation**

### **5.3.1 Relevant Statutory Authorities**

Centennial has consulted with and will continue to consult with the following regulatory bodies in relation to Angus Place operations and rehabilitation:

- Commonwealth Department of Climate Change, Energy, the Environment and Water (DCCEEW);
- Biodiversity and Conservation Division (BCD);
- Department of Planning, Housing and Infrastructure (DPHI);
- Water NSW;
- Natural Resources Access Regulator (NRAR);
- National Parks and Wildlife Services (NPWS);
- Forestry Corporation of NSW (managed former Newnes State Forest);
- Environment Protection Agency (EPA);
- Resources Regulator (RR);
- Sydney Catchment Authority (SCA);
- Lithgow City Council (LCC).

To satisfy the requirements of Schedule 3, Condition 33 of MP 06\_0021, this Rehabilitation Strategy was submitted for consultation with the RR, BCD, DPHI Water, LCC and the CCC on 25 May 2023, noting a separate submission would be made once stakeholder feedback has been addressed. Feedback received from stakeholders has been appropriately considered prior to submitting a copy of the final Rehabilitation Strategy to DPHI for approval.

Evidence of stakeholder engagement and feedback regarding this Rehabilitation Strategy has been included as **Appendix B**.



## **5.4 Other Key Stakeholders**

Angus Place has consulted with and will continue to consult with several community groups and landholders in relation to the Angus Place operations and rehabilitation, including:

- CCC;
- Aboriginal stakeholder groups;
- Local community and affected landowners;
- Community groups;
- Staff, contractors and unions;
- Non-Government Organisations (NGOs) including the Blue Mountains Conservation Society and the Colong Foundation for Wilderness; and
- Relevant infrastructure owners including Energy Australia.

## 6 PROPOSED FUTURE USE OF REHABILITATED AREAS

The final land use goal and conceptual long-term mine rehabilitation objective is to provide a low maintenance, geotechnically stable and safe landform that blends in with the surrounding topography suitable for subsequent land use as determined through consultation with stakeholders and company requirements. Specific long-term objectives include:

- Final landforms are safe, stable, non-polluting and free-draining;
- Remove all infrastructure that does not have any post-mining beneficial use;
- If required, preserve surface infrastructure that is heritage listed;
- Re-establishing land disturbed by the operation to an appropriate final land use;
- Provide habitat for fauna and corridors for fauna movement within the final landforms;
- Improve the visual amenity of the area;
- Not preclude other potential post mining land use options that may be considered feasible in the detailed mine closure planning process; and
- Monitor rehabilitation success in terms of physical and biological parameters.

In accordance with the *Mod 1 Environmental Assessment* (RPS 2010) *Mod 2 Environmental Assessment* (RPS 2012), infrastructure areas will generally be rehabilitated to woodland commensurate with adjacent vegetation. Access tracks associated with the Longwall 910 Dewatering Bore Facility will be rehabilitated following the cessation of operations, the access track from Sunnyside Road to the Ventilation Facility (APC-VS2) will be rehabilitated following the cessation of operations and the trenched infrastructure installed adjacent to existing access tracks has been rehabilitated.

The vegetation communities and species that have been or will be established are described within the RMP and include species that will successfully establish on the available growth medium, bind the soil and result in a variety of structure and food/habitat resources. The woodland seed mix will include a mix of understorey, mid-storey and over-storey species, with an aim to establish vegetation communities that are commensurate with surrounding existing vegetation. Whilst every attempt will be made to use species that existed prior to disturbance, additional species may be required to ensure suitable initial groundcover for site stabilisation and minimal soil erosion.

This may include the use of short-lived annual exotic non-invasive grass species (such as shirohie millet in the Spring and Summer, and oats/barley/wheat in the Autumn and Winter), however the use of these species will be minimised or avoided where possible.

The approved rehabilitation objectives state that for native revegetation:

- Vegetation structure of the rehabilitation is similar to that of native vegetation communities (including Plant Community Type (PCT) 677 / 731 / 797 / 1093 / 1100 / 1191 / 1247 / 1248 / 1666 / 1731) found in the local area;
- Vegetation composition of the rehabilitation contains species that are commensurate with native vegetation communities (including PCT 677 / 731 / 797 / 1093 / 1100 / 1191 / 1247 / 1248 / 1666 / 1731) found in the local area; and
- Levels of ecosystem function have been established that demonstrate the rehabilitation is self-sustainable.

Vegetation communities relevant to Angus Place are illustrated on **Figure 2.3**. Descriptions for the PCTs are provided in **Table 6.1**.

**Table 6.1 Vegetation Descriptions for Relevant PCTs**

PCT Number	Vegetation Description
<b>677</b>	Black Gum grassy woodland of damp flats and drainage lines of the eastern Southern Tablelands, South Eastern Highlands
<b>731</b>	Broad-leaved Peppermint - Red Stringybark grassy open forest on undulating hills, South Eastern Highlands Bioregion
<b>797</b>	Derived grassland of the South Eastern Highlands Bioregion and South East Corner Bioregion
<b>1093</b>	Red Stringybark - Brittle Gum - Inland Scribbly Gum dry open forest of the tablelands, South Eastern Highlands
<b>1100</b>	Ribbon Gum - Snow Gum grassy forest on damp flats, eastern South Eastern Highlands (Snow Gum - Mountain Gum tussock grass-herb forest of the South Eastern Highlands)
<b>1191</b>	Snow Gum - Candle Bark woodland on broad valley flats of the tablelands and slopes, South Eastern Highlands Bioregion
<b>1247</b>	Sydney Peppermint - Narrow-leaved Peppermint shrubby open forest on sheltered slopes of the Newnes Plateau, Sydney Basin Bioregion
<b>1248</b>	Sydney Peppermint - Silvertop Ash heathy open forest on sandstone ridges of the upper Blue Mountains, Sydney Basin Bioregion
<b>1666</b>	Blue Mountains Mallee Ash - Dwarf Casuarina heath of the upper Blue Mountains, Sydney Basin

Note: PCT 1731 was included in the approved Rehabilitation Objectives by error. This will be rectified in consultation with RR.

Some tracks and access roads may be retained for future use, but firstly, management responsibility would have to be accepted by NPWS otherwise access roads and access tracks associated with mine disturbance will be rehabilitated following the cessation of mining activities.

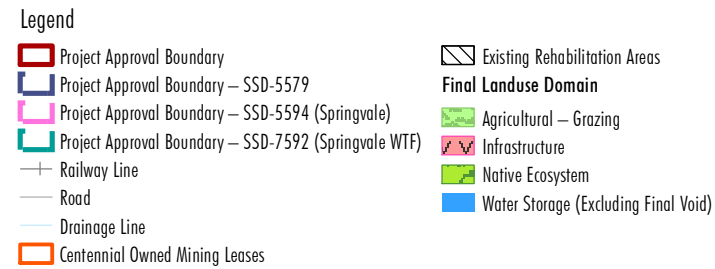
The water management structures at the Angus Place Pit Top will be retained in the post-mining landform to provide water resources for any fauna habiting the Pit Top, whilst the structures on Newnes Plateau will be rehabilitated using species commensurate with adjacent woodland communities.

Commonwealth Colliery and Vale of Clwydd No. 2 will be rehabilitated to the satisfaction of the Resources Regulator in accordance with the conditions of Consolidated Coal Lease (CCL) 704. The post-mining land uses for these former mines will be to rehabilitate land to be consistent with adjacent areas, which for Commonwealth Colliery is woodland and pasture of Vale of Clwydd No. 2.

Suitable post-mining land uses are continuing to be investigated that will allow ongoing use of the infrastructure and facilities, whilst providing beneficial socio-economic and environmental outcomes. Current and proposed rehabilitation areas, as aligned with final land use domains, are shown on **Figure 6.1A** to **Figure 6.1D**.

It is noted that a georectification issue has been identified with the Mod 2 Project Approval Boundary shown on **Figure 1.2** of this Rehabilitation Strategy. The Georectified Mod 2 ESA Boundary presented on **Figure 6.1D**, accurately reflects the ESA description of the assessed and approved disturbance footprint described in Table 4.1 of the Mod 2 Environmental Assessment.





## Final Landform and Rehabilitation



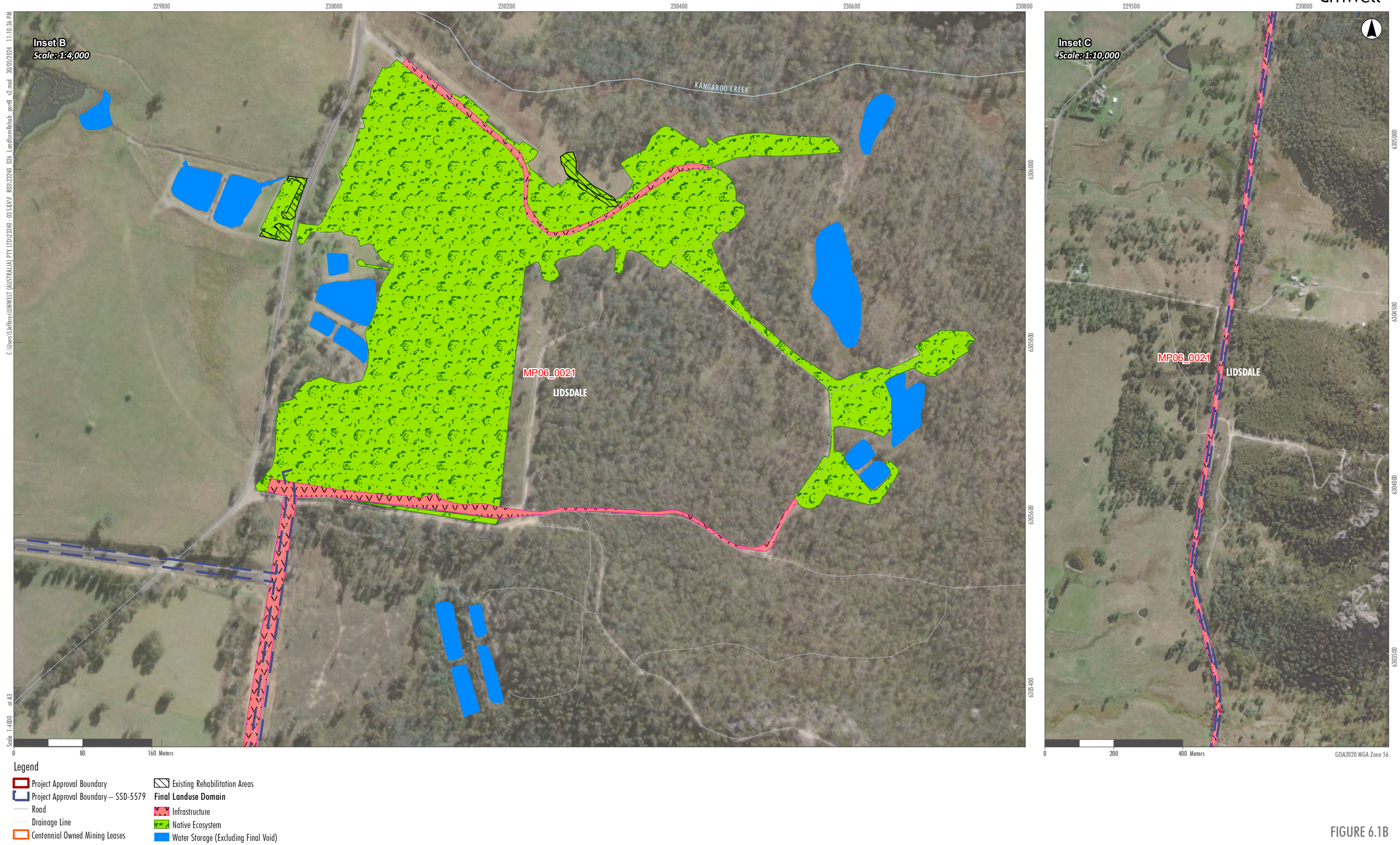
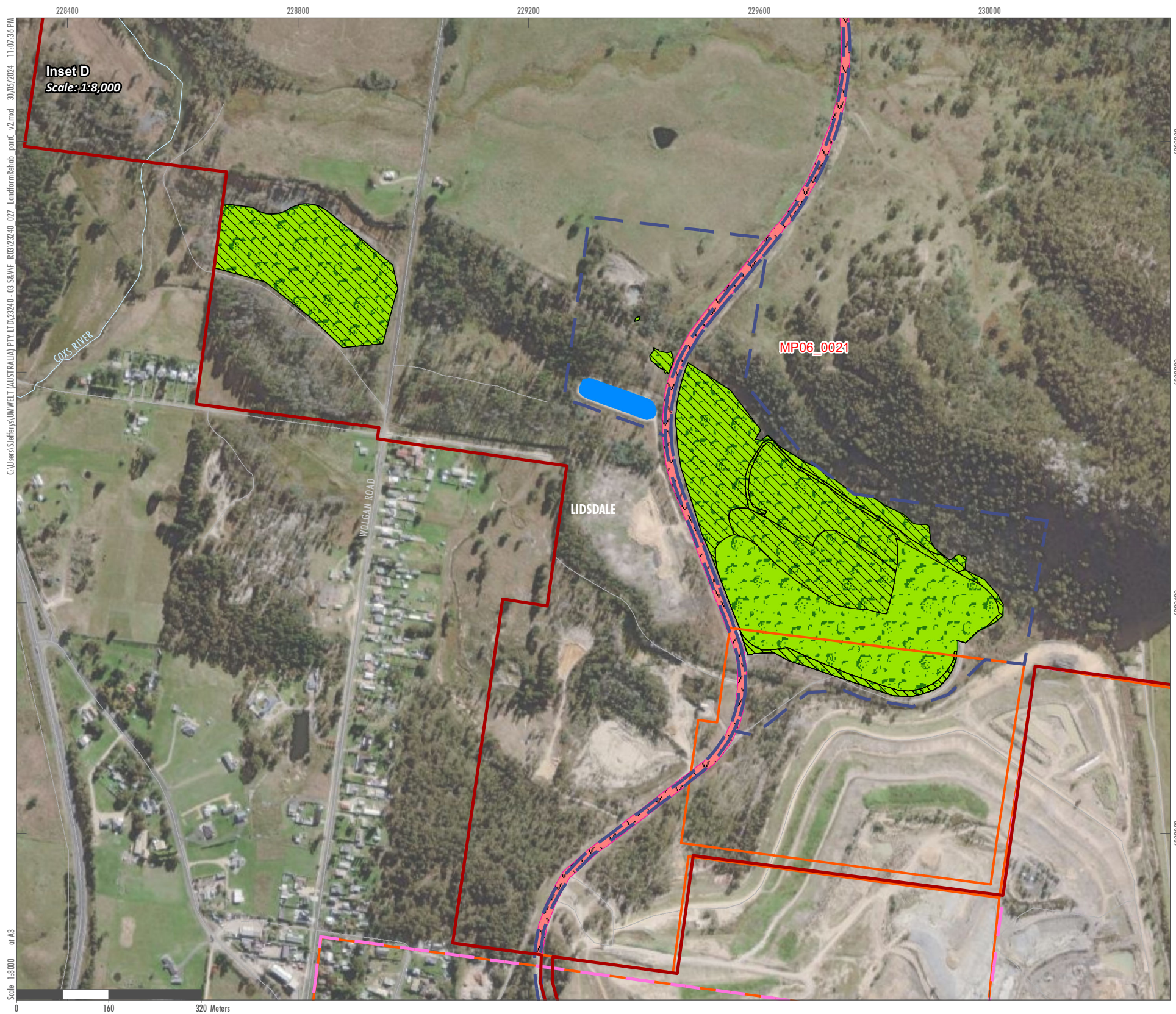


FIGURE 6.1B

Final Landform and Rehabilitation





- Legend**
- Project Approval Boundary
  - Project Approval Boundary - SSD-5579
  - Project Approval Boundary - SSD-5594 (Springvale)
  - Road
  - Drainage Line
  - Centennial Owned Mining Leases
  - Existing Rehabilitation Areas
  - Final Landuse Domain**
  - Infrastructure
  - Native Ecosystem
  - Water Storage (Excluding Final Void)

FIGURE 6.1C

Final Landform and Rehabilitation



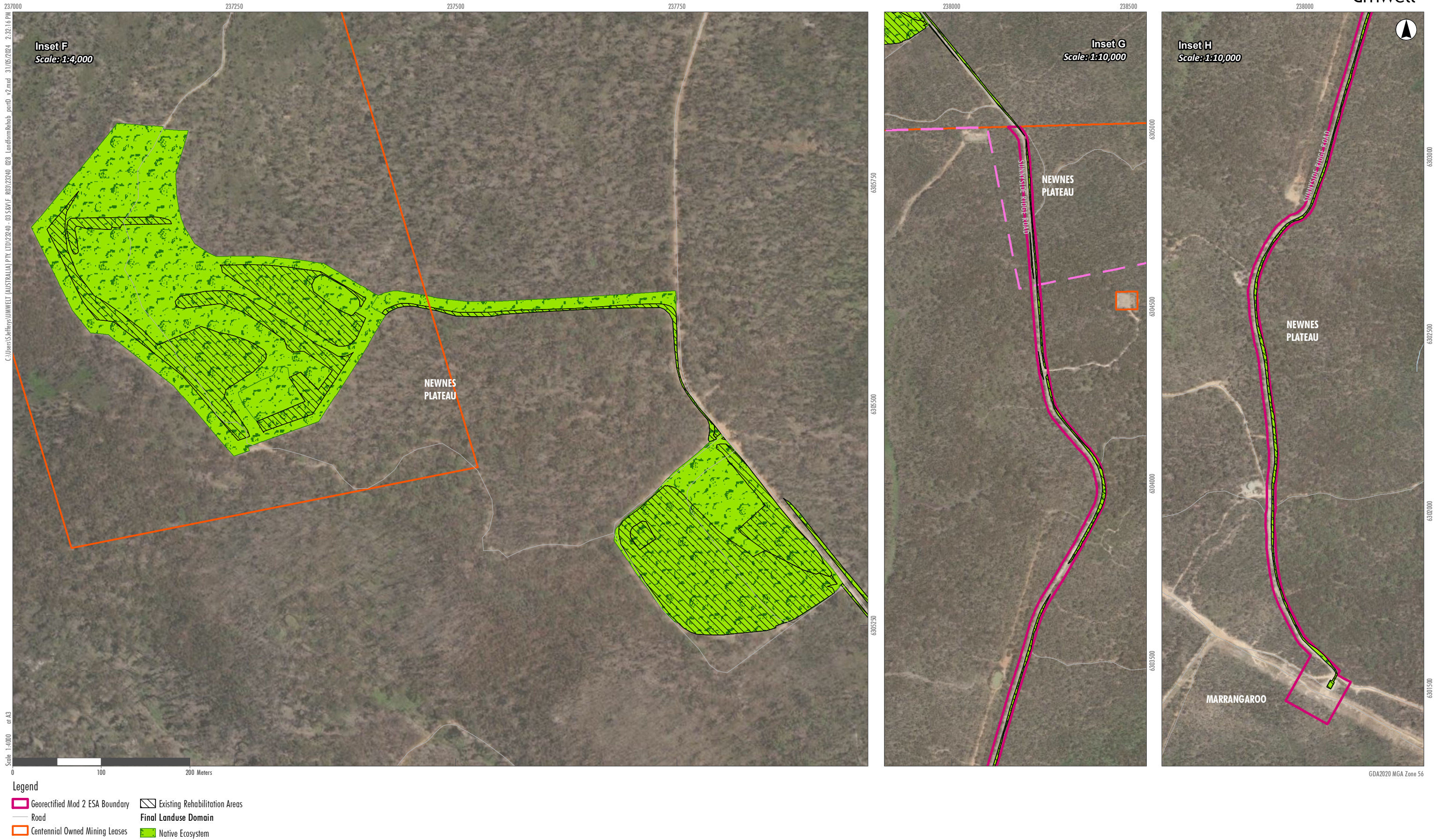


FIGURE 6.1D

Final Landform and Rehabilitation

Note: A georectification issue has been identified with the Mod 2 Project Approval Boundary shown on Figure 1.2 of this Rehabilitation Strategy. The Georectified Mod 2 ESA Boundary presented, accurately reflects the ESA description of the assessed and approved disturbance footprint described in Table 4.1 of the Mod 2 Environmental Assessment.



## 7 REHABILITATION

### 7.1 Rehabilitation Phases

Achievement of the agreed post-mining land use will be reached through a series of rehabilitation phases which are described as:

- **Phase 1: Active Mining** – This phase is associated with active mining operations across the mining domains.
- **Phase 2: Decommissioning** – This phase of rehabilitation includes activities associated with the removal of mining infrastructure, unless agreed to be retained, and the removal, remediation, or management of contaminated and hazardous materials.
- **Phase 3: Landform Establishment** – This phase of rehabilitation consists of the processes and activities required to construct the approved final landform.

In addition to profiling the surface of rehabilitation areas to the approved final landform profile, this phase may include works to construct surface water drainage features, encapsulate problematic materials, and prepare a substrate with the desired physical and chemical characteristics (that is, rock raking or ameliorating sodic materials).

- **Phase 4: Growth Medium Development** – This phase of rehabilitation consists of activities required to establish the physical, chemical and biological components of the substrate required to establish the desired vegetation community (including short-lived pioneer species) to ensure the achievement of the approved, or, if not yet approved, the proposed:
  - Rehabilitation objectives;
  - Rehabilitation completion criteria; and
  - Final landform and rehabilitation plan.

This phase may include spreading the prepared landform with topsoil and/or subsoil and/or soil substitutes, applying soil ameliorants to enhance the physical, chemical, and biological characteristics of the growth media, and actions to minimise loss of growth media due to erosion.

- **Phase 5: Ecosystem and Land Use Establishment** – This phase of rehabilitation consists of the processes to establish the final land use following construction of the final landform.

For vegetated land uses this rehabilitation phase includes establishing the desired vegetation community and implementing land management activities such as weed control.

- **Phase 6: Ecosystem and Land Use Development** – This phase of rehabilitation consists of the activities to manage maturing rehabilitation areas on a trajectory to achieving the approved, or, if not yet approved, the proposed:
  - Rehabilitation objectives;
  - Rehabilitation completion criteria; and
  - Final landform and rehabilitation plan.

For vegetated land uses this phase may include processes to develop characteristics of functional self-sustaining ecosystems, such as nutrient cycling, vegetation flowering and reproduction, and increasing habitat complexity, and development of a productive, self-sustaining soil profile. This phase of rehabilitation may include specific vegetation management strategies and maintenance such as tree thinning, supplementary plantings and weed management.

- **Phase 7: Rehabilitation Completion (sign-off)** – The final phase of rehabilitation when a rehabilitation area has achieved the final land use for the mining area:
  - As stated in the approved rehabilitation objectives and the approved rehabilitation completion criteria; and
  - As spatially depicted in the approved final landform and rehabilitation plan.

Rehabilitation areas may be classified as complete when the RR has determined in writing that rehabilitation has achieved the final land use following submission of the relevant application by the lease holder.



In accordance with Schedule 3, Condition 36A of MP 06\_0021, rehabilitation of disturbed areas are undertaken progressively at Angus Place. For more detail on the rehabilitation phases, methodologies, criteria and objectives refer to the Angus Place RMP.

## **7.2 Integration with Western Region Biodiversity Management Plan**

Biodiversity offsets, habitat corridors, rehabilitation of disturbed areas and maintenance of undisturbed areas are measures in line with the Western Region Biodiversity Management Plan and the Angus Place RMP, that will support achievement of positive biodiversity outcomes for flora and fauna, including threatened species.

Once operational areas are relinquished and no longer required for continuation of the operation, rehabilitation measures can be implemented to achieve and restore the biodiversity outcomes of these disturbed areas as part of achieving final landform and post-mining land uses outlined in Section 6 of the Angus Place RMP and the Western Region Biodiversity Management Plan.

Rehabilitation monitoring will be undertaken in accordance with the Angus Place RMP. The monitoring results are used to identify the need for corrective actions for rehabilitation performance. The monitoring program incorporates the most appropriate indicators and methods that:

- Provide a measure of completion criteria to be assessed in accordance with the defined rehabilitation objectives;
- Adequately track changes to rehabilitation phases;
- Are reproducible;
- Utilise scientific recognised techniques; and
- Are cost-effective.

Monitoring is conducted by a suitably skilled and qualified person(s) at locations representative of the range of conditions on the rehabilitating areas and appropriate analogue sites. Monitoring results will inform refinements of rehabilitation methodology as required. Rehabilitation monitoring will be continued until it can be demonstrated that rehabilitation has satisfied all rehabilitation and closure criteria.

Ecological monitoring will be undertaken in accordance with the Western Region Biodiversity Management Plan. Monitoring reports will include recommendations that describe the outcomes of monitoring and recommendations for restoring biodiversity values.

For further detail on rehabilitation in relation to biodiversity management, refer to the Western Region Biodiversity Management Plan.

## **8 INVESTIGATIONS AND PROGRAMMES**

### **8.1 Minimising Adverse Socio-Economic Effects**

A Social Impact Assessment (SIA), in accordance with the *Social Impact Assessment Guideline for State Significant Projects* (DPHI, 2021), will be undertaken five years prior to planned closure of the mine. This will include stakeholder consultation and will assist in minimising long-term impacts associated with the rehabilitation and closure of Angus Place Mine, including socio-economic impacts.

Although MP 06\_0021 is set to expire in August 2024, an SIA is yet to be created due to the Centennial Angus Place proposing the Angus Place West Project (SSD 26254212).

Once an SIA has been triggered, the outcomes will be reported/reflected in the:

- Rehabilitation Strategy;
- RMP; and
- Annual Review.

### **8.2 Opportunities to Refine and Improve the Final Landform**

Angus Place is associated with two main surface disturbance areas requiring rehabilitation, being the Pit Top and infrastructure facilities located on the Newnes Plateau. Given the limited footprint of proposed rehabilitation, Angus Place has extremely limited potential to improve the final landform.

Opportunities to refine and improve the final landform will be undertaken through the continued development of this Rehabilitation Strategy and the Angus Place RMP. The rehabilitation completion criteria outlined in the Angus Place RMP will be utilised to demonstrate achievement of rehabilitation objectives. It is noted that the completion criteria may be subject to refinement as rehabilitation progresses, including because of ongoing consultation with relevant stakeholders, studies yet to be completed and continuous improvement processes informed by rehabilitation monitoring results. The achievement (or otherwise) of the completion criteria will be monitored and reported as required.

Outcomes of investigations conducted into the continual improvement of rehabilitation outcomes and final landforms as stated above, will be included in:

- Annual Rehabilitation Report and Forward Program;
- RMP; and
- Annual Review.

## **9 REVIEW**

In accordance with the requirements of Schedule 5, Condition 4 of MP 06\_0021, Angus Place will review and if necessary, revise this Rehabilitation Strategy within three months of the following:

- a. Submission of an Annual Review;
- b. Submission of an incident report;
- c. Submission of an Independent Environmental Audit; or
- d. The approval of a modification to MP 06\_0021.

Following amendments, a copy of the revised Rehabilitation Strategy will be provided to RR, BCD, DPHI Water, Water NSW, NPWS, Lithgow City Council and the CCC as part of the consultation process, prior to submission to DPHI for approval.

## 10 REFERENCES

- ANZMEC and MCA (2000). *Strategic Framework for Mine Closure*.
- Centennial Coal Limited (2018). *Western Region Historic Heritage Management Plan*.
- Department of Planning (2016). *Guidelines for Establishing and Operating Community Consultative Committees for Mining Developments*.
- GSSE (2010). *Angus Place Colliery 75W Modification Rehabilitation Strategy*.
- GSSE (2012). *Angus Place Colliery Ventilation Facility Project Rehabilitation Strategy*.
- Lithgow City Council (2010). *Lithgow Draft Land Use Strategy 2010 – 2030*.
- NSW Department of Planning and Environment (2021). *Social Impact Assessment Guideline for State Significant Projects*.
- NSW Department of Planning. (2016). *Community Consultative Committee (CCC) Guidelines for State Significant Projects*.
- Resources Regulator (2022). *Guideline: Rehabilitation Cost Estimate*.
- Resources Regulator (2024). *Form and Way: Rehabilitation Management Plan for Large Mines*.
- Resources Regulator (2023). *Guideline: Rehabilitation Objectives and Rehabilitation Completion Criteria*.
- RPS (2010). *Environmental Assessment: Angus Place Colliery Modification of Project Approval 06\_0021*.
- RPS (2012). *Environmental Assessment: Angus Place Colliery Ventilation Facility Project*.

## **Appendix A – DPHI Endorsement of Suitably Qualified Persons**

Russell Hart  
Group Manager Projects & Rehabilitation  
Centennial Coal Pty Limited

Via: NSW Major Project Portal (SSD-5594-PA-85)

16/05/2023

---

**Subject: Appointment of suitably qualified and experienced person – Rehabilitation Strategy**

Dear Russell,

I refer to your request dated 21 April 2023 for the Planning Secretary's endorsement of suitably qualified and experienced person(s) to prepare a Rehabilitation Strategy in accordance with the following development consents:

- Northern Coal Services Project: Schedule 3, Condition 28A of SSD-5145;
- Awaba Colliery: Schedule 3, Condition 29A of MP 10\_0038;
- Springvale Mine Extension Project: Schedule 4, Condition 31A of SSD-5594;
- Myuna Colliery Mining Project: Schedule 3, Condition 34A of MP 10\_0080; and
- Angus Place Coal Project: Schedule 3, Condition 36C of MP 06\_0021.

The Department has reviewed the nominations you have provided and is satisfied that Adam Williams (Principal Environmental Consultant, Umwelt Environmental and Social Consultants), is a suitably qualified and experienced person to prepare the Rehabilitation Strategies required under the above development consents.

Accordingly, I can advise that the Planning Secretary endorses the appointment of Adam Williams to prepare the Rehabilitation Strategy under:

- Schedule 3, Condition 28A of SSD-5145;
- Schedule 3, Condition 29A of MP 10\_0038;
- Schedule 4, Condition 31A of SSD-5594;
- Schedule 3, Condition 34A of MP 10\_0080; and
- Schedule 3, Condition 36C of MP 06\_0021.

If you wish to discuss the matter further, please contact Gabrielle Allan on 02 9585 6078.

Yours sincerely



Jessie Evans  
Director, Resource Assessments  
Resource Assessments

As nominee of the Planning Secretary

## **Appendix B – Stakeholder Engagement Records**



Our ref: MP06\_0021-PA-34

William Olson  
Environment & Community Officer  
Centennial Angus Place Pty Ltd  
PO BOX 1000  
Toronto New South Wales 2283  
03/05/2024

---

Subject: Rehabilitation Strategy – Angus Place

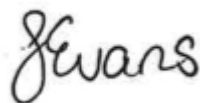
Dear Mr Olson,

Reference is made to your post approval matter, MP06\_0021-PA-34, Rehabilitation Strategy - Angus Place, submitted as required by Schedule 3 Condition 36C of MP06\_0021 (Angus Place Coal Project) as modified (the consent) to the NSW Department of Planning, Housing and Infrastructure (NSW Planning).

NSW Planning has reviewed the Rehabilitation Strategy and considers more information is required to satisfy the conditions of consent. Under the provisions of Schedule 5, Condition 4 of the consent, I, as nominee of the Planning Secretary, request that an amended Rehabilitation Strategy be submitted addressing review comments in Attachment A by 31 May 2024 (or as otherwise agreed by the Planning Secretary).

Should you wish to discuss the matter further, please contact Emily Pemberton on 02 8275 1783 or by email at [emily.pemberton@dpie.nsw.gov.au](mailto:emily.pemberton@dpie.nsw.gov.au).

Yours sincerely



Jessie Evans  
Director, Resource Assessments  
Resource Assessments

As nominee of the Planning Secretary

Your ref: Rehabilitation Strategy - Angus Place

Our ref: MP06\_0021-PA-34

**Post Approval Review**

**ATTACHMENT A**

Review Document: Angus Place Coal Mine Rehabilitation Strategy

Revision: 0.2. December 2023

Development Consent Schedule and condition	Sufficient (Yes/No/Partial)	Document reference and comment	Action Required
Schedule 3  36C. The Applicant must prepare a Rehabilitation Strategy for the development, to the satisfaction of the Secretary. The Rehabilitation Strategy must:	Partial	See below	See below
(a) be prepared by a suitably qualified and experienced person(s) whose appointment has been endorsed by the Secretary;	Yes	Rehabilitation Strategy has been prepared by Adam Williams. Adam Williams was endorsed by the Department of Planning and Environment (DPE) as a suitably qualified person to prepare the Rehabilitation Strategy for Angus Place.	N/A

## Department of Planning, Housing and Infrastructure

Development Consent Schedule and condition	Sufficient (Yes/No/Partial)	Document reference and comment	Action Required
(b) be prepared in consultation with Resources Regulator, BCD, DPE Water, WaterNSW, NSW National Parks and Wildlife Service, Council and the CCC;	Yes	Consultation is detailed in section 5 and evidence of consultation and revision to the Strategy is provided in Appendix B.  The Strategy was provided to the requisite stakeholders for consultation.	N/A
(c) be submitted to the Secretary for approval within 6 months of the date of determination of 06_0021 MOD 7, or as otherwise agreed by the Secretary;	Partial	MOD 7 was approved on 25 November 2022. Consultation with agencies was initiated within 6 months of the determination, however the Strategy was submitted to the Secretary 20 December 2023.	To note in Annual Review
(d) describe the strategic rehabilitation outcomes for the site, including mine closure, final landform, post-mining land use/s and water management;	Yes	<ol style="list-style-type: none"> <li>Sections 6 and 7 discuss broad strategic rehabilitation outcomes for the site including the aim to provide a low maintenance, geotechnically stable and safe landform that blends in with the surrounding topography, suitable for subsequent land.</li> <li>Figure 6-1 indicates proposed strategic rehabilitation stages, including rehabilitating infrastructure areas to</li> </ol>	<p>N/A</p> <p>Noted</p>

Department of Planning, Housing and Infrastructure

Development Consent Schedule and condition	Sufficient (Yes/No/Partial)	Document reference and comment	Action Required
		<p>woodland, commensurate with adjacent vegetation, in accordance with MP 06_0021 MOD 1 and MOD 2.</p> <p>3. Some access tracks and roads, and some water management structures are proposed to be retained post-mining.</p>	Noted
(e) align with the strategic rehabilitation and mine closure objectives and address the principles of the Strategic Framework for Mine Closure (ANZMEC and MCA, 2000), or its latest version;	Partial	<p>The Strategic Framework for Mine Closure Strategy (The Closure Strategy) principles include (1) stakeholder involvement, (2) planning, (3) financial provision, (4) implementation, (5) standards and (6) relinquishment.</p> <p>The Rehabilitation Strategy broadly addresses The Closure Strategy principles in Table 4.1, for (2) <i>planning</i> and (6) <i>relinquishment</i>. <i>Stakeholder involvement</i> (1) or engagement is evident throughout the Strategy, specifically in section 5.</p> <p>Section 4.2 discusses that a Rehabilitation Cost Estimate (RCE) has been performed for Angus</p>	<p>Update the rehabilitation strategy to clearly identify how the Rehabilitation Strategy addresses the principles of the Strategic Framework for Mine Closure (ANZMEC and MCA, 2000), or its latest version.</p> <p>Include and reference any relevant rehabilitation standards.</p>

Department of Planning, Housing and Infrastructure

Development Consent Schedule and condition	Sufficient (Yes/No/Partial)	Document reference and comment	Action Required
		<p>Place Mine, but does not clarify whether (3) <i>financial provision</i> is available/in place.</p> <p>If there are relevant (5) <i>standards</i> applicable to rehabilitation, these can be included in the rehabilitation Strategy, or a commitment made that standards will be detailed in the subsequent Rehabilitation Plan.</p> <p>MP06_0021 is due to lapse on 18 August 2024. It's unclear how development is meeting it's closure related rehabilitation timeframes indicated in Table 4.1 and the principle (4) <i>implementation</i>.</p>	
(f) describe how rehabilitation will be integrated with the mine planning process, including a plan to address premature or temporary mine closure;	Yes	<p>Section 4 details strategic rehabilitation and mine closure planning timeframes, and also notes opportunities to extend the life of mine are being actively progressed and have subsequently delayed the mine closure planning process.</p> <p>Section 4.2 discusses temporary or premature mine closure, including a Rehabilitation Cost Estimate (RCE) based on current disturbance.</p>	N/A



Development Consent Schedule and condition	Sufficient (Yes/No/Partial)	Document reference and comment	Action Required
		Section 4.2 commits that in the event of temporary or premature closure, the Rehabilitation Strategy and the RMP would be revised.	
<p>(g) include details of:</p> <p>— (i) target vegetation communities and species to be established within the proposed revegetation areas;</p>	No	<p>1. Section 2, Figure 2.3 details the mapped and or existing vegetation and hydrology, but Section 2, as referenced in Table 1.2, does not clearly identify which areas are to be revegetated, or with which target vegetation communities and species.</p> <p>2. Section 2.2.3 discusses proposed land use, including that Angus Place Pit Top and surface facility areas on the Newnes Plateau will be rehabilitated to woodland commensurate with the adjacent remnant vegetation, and the access track from Sunnyside Road to the Ventilation Facility is noted to become rehabilitated. It's unclear though which communities or species will be established.</p> <p>Table 2.1 in Section 2.5 details the post-mining requirements land use and</p>	<p>1. Update the Strategy to clearly identify proposed revegetation areas.</p> <p>2. Update the Strategy to clearly identify the target vegetation communities and species to be established for each proposed revegetation area.</p> <p>3. Update Figure 2.3 key.</p>

Development Consent Schedule and condition	Sufficient (Yes/No/Partial)	Document reference and comment	Action Required
		<p>rehabilitation outcomes, incorporating MOD 1 Environmental Assessment commitments and Angus Place Mine's commitment to undertake rehabilitation, with outcomes consistent with the Environmental Assessment which formed the basis for any approvals. These include MOD 1 and MOD 2, which provided that:</p> <ul style="list-style-type: none"> <li>• infrastructure areas will be rehabilitated to woodland commensurate with adjacent vegetation;</li> <li>• access tracks associated with the Longwall 910 Dewatering Bore Facility will be rehabilitated following the cessation of operations; and</li> <li>• the access track from Sunnyside Road to the Ventilation Facility (APCVS2) will be rehabilitated following the cessation of operations,</li> </ul>	

Department of Planning, Housing and Infrastructure

Development Consent Schedule and condition	Sufficient (Yes/No/Partial)	Document reference and comment	Action Required
		however communities and species to be established within the proposed revegetation areas are not defined in the Strategy.  3. There is a blue/purple approval boundary with no SSD ID number in the key to Figure 2.3.	
— (ii) a post-mining land use strategy to investigate and facilitate post-mining beneficial land uses for the site and/or infrastructure; and	Yes	Section 6 details the overarching strategy for post mining land-use and section 5 details stakeholder consultation to investigate and facilitate post-mining beneficial land uses.	N/A
— (iii) stakeholder engagement plan to guide rehabilitation and mine closure planning processes and outcomes.	No	Section 5.1 states that Angus Place is developing a Stakeholder Engagement Plan (SEP) to facilitate stakeholder consultation for the operations rehabilitation objectives and completion criteria. A SEP has not been provided as required by this condition.	Provide a SEP as required by the condition.
(h) investigate opportunities to refine and improve the final landform over time.	Yes	1. Section 8.2 discusses timings for review of opportunities to refine or improve the final landform at the Pit Top and infrastructure facilities at the Angus Place site.	• None

Department of Planning, Housing and Infrastructure

Development Consent Schedule and condition	Sufficient (Yes/No/Partial)	Document reference and comment	Action Required
		2. The Strategy commits that opportunities and outcomes to refine or improve the final landform will be included in the Annual Rehabilitation Report and Forward Program, the Rehabilitation Management Plan and Annual Review.	<ul style="list-style-type: none"> <li>None. Noted.</li> </ul>
Note: The Rehabilitation Strategy must address all land impacted by the mine, whether prior to or following the date of this consent.	Yes	<p>Sections 6 and 7 identify long term objectives and rehabilitation phases for final land use, including re-establishing land disturbed by the operation to an appropriate final land use (dot 4, section 6).</p> <p>Section 6 discusses rehabilitation which has been undertaken as well as ongoing consultation for beneficial post-mining land use for recreational or fire trail access on some tracks and access roads.</p> <p>Appendix B to the Strategy includes consultation including agency comments and applicant's response to restoration of natural features. The Department note that some natural features are managed through management plans separate to this</p>	N/A

## Department of Planning, Housing and Infrastructure

Development Consent Schedule and condition	Sufficient (Yes/No/Partial)	Document reference and comment	Action Required
		Rehabilitation Strategy, as identified in Appendix B – Stakeholder Engagement Records.	

General Department review comments:	Applicant's response
<p>The Department note per Schedule 3, condition 36, a Mine Closure Strategy must be prepared in consultation with Council, RR, WaterNSW and EPA, and be submitted to the Secretary at least 3 years prior to the cessation of mining, however, per Schedule 2, condition 5: This approval lapses on 18 August 2024, and no Mine Closure Strategy has been provided to the Secretary for approval.</p> <p>The Rehabilitation Strategy comments that Angus Place West Project (SSD 26254212) EIS is being prepared for continuation of operations until 31 December 2042. However, the EIS is yet to be received and there are approximately 4 months until the existing consent lapses, providing little time to assess SSD 26254212 and/or any proposed project rehabilitation updates/changes.</p> <p>Please provide an update on the progress of the Mine Closure Strategy.</p>	
<p>Section 4.1, dot 2 states that a Mine Closure Plan will be developed at least 2 years prior to the anticipated mine closure date. See comment above.</p> <p>Update Section 4.1 to reflect the consent requirements and provide a progress update of the Mine Closure Plan.</p>	



Comments were received from DPHI on the 3 May 2024 in preparation of this rehabilitation strategy. Centennial have addressed each comment with responses detailed below.

DPHI Comment	Action Required	Centennial Response
<p>MOD 7 was approved on 25 November 2022. Consultation with agencies was initiated within 6 months of the determination, however the Strategy was submitted to the Secretary 20 December 2023.</p>	<p>To note in Annual Review.</p>	<p>A letter was submitted on 25 May 2023 to DPHI regarding the submission of draft Rehabilitation Strategies on either 24 or 25 May 2023. This letter is included in Appendix B of the Rehabilitation Strategy and outlines that the documents were issued for consultation at this time. The Strategy was reissued to DPHI in December 2023, following edits to address stakeholder feedback.</p>
<p>The Strategic Framework for Mine Closure Strategy (The Closure Strategy) principles include (1) stakeholder involvement, (2) planning, (3) financial provision, (4) implementation, (5) standards and (6) relinquishment.</p> <p>The Rehabilitation Strategy broadly addresses The Closure Strategy principles in Table 4.1, for (2) planning and (6) relinquishment. Stakeholder involvement (1) or engagement is evident throughout the Strategy, specifically in section 5.</p> <p>Section 4.2 discusses that a Rehabilitation Cost Estimate (RCE) has been performed for Angus Place Mine, but does not clarify whether (3) financial provision is available/in place.</p> <p>If there are relevant (5) standards applicable to rehabilitation, these can be included in the rehabilitation Strategy, or a commitment made that standards will be detailed in the subsequent Rehabilitation Plan.</p> <p>MP06_0021 is due to lapse on 18 August 2024. It's unclear how development is meeting it's closure related rehabilitation timeframes indicated in Table 4.1 and the principle (4) implementation.</p>	<p>Update the rehabilitation strategy to clearly identify how the Rehabilitation Strategy addresses the principles of the Strategic Framework for Mine Closure (ANZMEC and MCA, 2000), or its latest version.</p> <p>Include and reference any relevant rehabilitation standards.</p>	<p>Additional content has been included in Section 4 to outline each of the Strategic Framework objectives and principles, and how each has been/will be addressed.</p> <p>This includes reference to the anticipated cessation of operations in 2042 and applicable rehabilitation standards.</p>
<p>1. Section 2, Figure 2.3 details the mapped and or existing vegetation and hydrology, but Section 2, as referenced in Table 1.2, does not clearly identify which areas are to be revegetated, or with which target vegetation communities and species.</p> <p>2. Section 2.2.3 discusses proposed land use, including that Angus Place Pit Top and surface facility areas on the Newnes Plateau</p>	<p>1. Update the Strategy to clearly identify proposed revegetation areas.</p> <p>2. Update the Strategy to clearly identify the target vegetation communities and species to be established for each</p>	<p>1. Figure 6.1 has been presented as a series of figures, with increased focus on existing and proposed rehabilitation areas.</p> <p>2. Within Section 6, reference to target vegetation communities</p>

DPHI Comment	Action Required	Centennial Response
<p>will be rehabilitated to woodland commensurate with the adjacent remnant vegetation, and the access track from Sunnyside Road to the Ventilation Facility is noted to become rehabilitated. It's unclear though which communities or species will be established.</p> <p>Table 2.1 in Section 2.5 details the post-mining requirements land use and rehabilitation outcomes, incorporating MOD 1 Environmental Assessment commitments and Angus Place Mine's commitment to undertake rehabilitation, with outcomes consistent with the Environmental Assessment which formed the basis for any approvals. These include MOD 1 and MOD 2, which provided that:</p> <ul style="list-style-type: none"> <li>• infrastructure areas will be rehabilitated to woodland commensurate with adjacent vegetation;</li> <li>• access tracks associated with the Longwall 910 Dewatering Bore Facility will be rehabilitated following the cessation of operations; and</li> <li>• the access track from Sunnyside Road to the Ventilation Facility (APCVS2) will be rehabilitated following the cessation of operations,</li> </ul> <p>however communities and species to be established within the proposed revegetation areas are not defined in the Strategy.</p> <p>3. There is a blue/purple approval boundary with no SSD ID number in the key to Figure 2.3.</p>	<p>proposed revegetation area.</p> <p>3. Update Figure 2.3 key.</p>	<p>and species has been included, consistent with the RMP and approved Rehabilitation Objectives (ROBJs).</p> <p>3. Figure 2.3 has been updated to include the missing boundary reference (SSD-5579).</p>
<p>Section 5.1 states that Angus Place is developing a Stakeholder Engagement Plan (SEP) to facilitate stakeholder consultation for the operations rehabilitation objectives and completion criteria. A SEP has not been provided as required by this condition.</p>	<p>Provide a SEP as required by the condition.</p>	<p>The wording in Section 5.1 and referenced by DPHI relates to NSW Rehabilitation Reform requirements, specifically the requirement to consult with "relevant stakeholders" as stipulated in the Guideline: Rehabilitation Objectives and Completion Criteria. Additional wording has been included for clarity in Section 5 of the Strategy.</p>

DPHI Comment	Action Required	Centennial Response
<p>The Department note per Schedule 3, condition 36, a Mine Closure Strategy must be prepared in consultation with Council, RR, WaterNSW and EPA, and be submitted to the Secretary at least 3 years prior to the cessation of mining, however, per Schedule 2, condition 5: This approval lapses on 18 August 2024, and no Mine Closure Strategy has been provided to the Secretary for approval.</p> <p>The Rehabilitation Strategy comments that Angus Place West Project (SSD 26254212) EIS is being prepared for continuation of operations until 31 December 2042. However, the EIS is yet to be received and there are approximately 4 months until the existing consent lapses, providing little time to assess SSD 26254212 and/or any proposed project rehabilitation updates/changes.</p>	<p>Please provide an update on the progress of the Mine Closure Strategy.</p>	<p>The Mine Closure Strategy is currently in draft and will be lodged soon. The Angus Place West Project (SSD 26254212) Environmental Impact Statement is also currently being prepared for public exhibition, and highlights the socio-economic benefits of continued mining.</p>
<p>Section 4.1, dot 2 states that a Mine Closure Plan will be developed at least 2 years prior to the anticipated mine closure date. See comment above.</p>	<p>Update Section 4.1 to reflect the consent requirements and provide a progress update of the Mine Closure Plan.</p>	<p>Section 4 has been updated to more clearly reflect the consent requirements and progress of the Mine Closure Strategy. Additional detail has been included in the document to reflect alignment with the Strategic Framework for Mine Closure (ANZMEC and MCA, 2000).</p>

Monday 11 September 2023

Russell Hart  
Centennial Coal  
100 Miller Road  
Fassifern NSW 2283  
Russell.hart@centennialcoal.com.au

Via: Email

---

Dear Russell,

I refer to the Angus Place Colliery Rehabilitation strategy submitted to the Resources Regulator on 25<sup>th</sup> May 2023. Based on the review of the Rehabilitation Strategy the Resources Regulator advises that it has no specific comments regarding mine rehabilitation matters in relation to the proposal.

### ***LIMITATIONS***

It should be noted that the Resources Regulator does not provide any endorsement of the proposed rehabilitation methodologies presented in the plans provided. Under the conditions of a mining authorisation granted under the *Mining Act 1992*, the Resources Regulator requires the holder to adopt a risk-based approach to achieving the required rehabilitation outcomes.

The applicability of the controls to achieve effective and sustainable rehabilitation is to be determined based on site-specific risk assessments conducted by the authorisation holder. An authorisation holder may also be directed by the Resources Regulator to implement further risk control measures required to achieve effective rehabilitation outcomes during the life of the mine.



## **BACKGROUND**

The Mining Act Inspectorate within the Resources Regulator undertake risk-based compliance and enforcement activities in relation to obligations under the *Mining Act 1992*. This includes undertaking assessment and compliance activities in relation to mine rehabilitation activities and determination of security deposits.

## **CONTACT**

Should you require any further information or clarification, please contact the Regulator on 1300 814 609 (Press Option 2 Press Option 5) or email [nswresourcesregulator@service-now.com](mailto:nswresourcesregulator@service-now.com).

Yours sincerely,



**Matthew Newton**

Principal Inspector – Environment and Rehabilitation Operations  
Resources Regulator

Our ref: DOC23/623747

Your ref:

Natalie Gardiner – Environment & Community Superintendent  
Russell Hart – Group Manager Projects & Rehabilitation  
[natalie.gardiner@centennialcoal.com.au](mailto:natalie.gardiner@centennialcoal.com.au)  
[russell.hart@centennialcoal.com.au](mailto:russell.hart@centennialcoal.com.au)

Dear Natalie and Russell

**Centennial rehabilitation strategies – Angus Place and Springvale (May 2023)**

Thank you for your e-mail dated 25 May 2023 to the National Parks and Wildlife Service (NPWS) and Biodiversity, Conservation and Science Directorate (BCS) of the Department of Planning and Environment inviting comments on the draft rehabilitation strategies for Angus Place and Springvale. We apologise for the delay in responding to you.

Table 1.2 in both rehabilitation strategies detail the requirements of the consents for the projects. This includes notes for both that state,

*The Rehabilitation Strategy must address all land impacted by the development, whether prior to or following the date of this consent.*

Table 1.3 in the Springvale rehabilitation strategy includes an objective for all watercourses subject to mine water discharges and/or subsidence impacts,

*Hydraulically and geomorphologically stable, with aquatic ecology and riparian vegetation that is the same, or better than prior to the grant of this consent.*

BCS and NPWS consider that the rehabilitation plans should include sections discussing the rehabilitation and restoration of natural features impacted by subsidence including (but not limited to) East Wolgan Swamp, Narrow Swamp, Junction Swamp and Kangaroo Creek.

This section should detail:

- The nature of the impacts
- Rehabilitation / restoration works to date
- Future rehabilitation / restoration works
- Monitoring and reporting

Additional comments on both rehabilitation plans are provided in **Attachment A**.

If you have any questions about this advice, please do not hesitate to contact me via [liz.mazzer@environment.nsw.gov.au](mailto:liz.mazzer@environment.nsw.gov.au) or (02) 6883 5325.

Yours sincerely



**Liz Mazzer**  
**A/Senior Team Leader Planning North West**  
**Biodiversity, Conservation and Science Directorate**

13 July 2023

## NPWS and BCS comments on the Angus Place and Springvale draft rehabilitation plans

Plan / section	Comments
Angus Place and Springvale Section 2.2.2 – Current land use	Current land use does not include commercial forestry. This is an historic land use.
Angus Place and Springvale Section 2.2.3 – Proposed land use	<p>Proposed land use mentions access trails being retained for use in Gardens of Stone State Conservation Area (GoS SCA). Any retention of access trails requires consultation with NPWS.</p> <p>Planning for proposed land use should anticipate that the land zoning under the Lithgow LEP will change to C1 – National Parks and Nature Reserves to align with the gazettal of the land as GoS SCA. Final landform planning should anticipate this change and set objectives accordingly.</p>
Angus Place and Springvale table 3.1 – Infrastructure to be decommissioned	<p>Trenched power cables and water pipelines are designated to be isolated and made safe. The rehabilitation plans should state whether these will be removed or remain in-situ.</p> <p>Substations and switchyard –concrete pads should also be removed.</p> <p>Tanks – any concrete pad or other footings that supports these tanks should be removed</p>
Angus Place and Springvale Section 3.4 – Infrastructure	The rehabilitation work occurring on the Newnes Plateau should be completed in consultation with NPWS to ensure landowner sign-off can be achieved.
Angus Place and Springvale Section 6 – Proposed future use of rehabilitated areas	Any roads proposed to be left in-situ require consultation with NPWS.

Comments were received from BCD and NPWS on the 13 July 2023 in preparation of this rehabilitation strategy. Centennial have addressed each comment with responses detailed below.

BCD and NPWS Comment	Centennial Response
<p>Table 1.2 in both rehabilitation strategies detail the requirements of the consents for the projects. This includes notes for both that state, The Rehabilitation Strategy must address all land impacted by the development, whether prior to or following the date of this consent.</p> <p>Table 1.3 in the Springvale rehabilitation strategy includes an objective for all watercourses subject to mine water discharges and/or subsidence impacts,</p> <p>Hydraulically and geomorphologically stable, with aquatic ecology and riparian vegetation that is the same, or better than prior to the grant of this consent.</p> <p>BCS and NPWS consider that the rehabilitation plans should include sections discussing the rehabilitation and restoration of natural features impacted by subsidence including (but not limited to) East Wolgan Swamp, Narrow Swamp, Junction Swamp and Kangaroo Creek.</p> <p>This section should detail:</p> <ul style="list-style-type: none"> <li>• The nature of the impacts</li> <li>• Rehabilitation / restoration works to date</li> <li>• Future rehabilitation / restoration works</li> <li>• Monitoring and reporting</li> </ul>	<p>Table 1.3 of the Springvale Rehabilitation Strategy and corresponding consent (SSD-5594), specifies “These rehabilitation objectives apply to all subsidence impacts and environmental consequences caused by mining taking place after the date of this consent; and to all surface infrastructure parts of the development, whether constructed prior to or following the date of this consent.”</p> <p>An Enforceable Undertaking was issued under the EPBC Act on 12 October 2011. This was in relation to Narrow Swamp, East Wolgan Swamp and Junction Swamp. Centennial have complied with the requirements of this Enforceable Undertaking, on that basis “the Minister will not pursue further action against Springvale Coal or Centennial Angus Place in relation to the activities, works and impacts.”</p> <p>In accordance with Schedule 3, Condition 13A of Angus Place consent MP 06_0021, a Trigger Action Response Plan for Kangaroo Creek and Long Swamp has been developed. This is captured within the approved Water Management Plan, including remediation measures that may be implemented.</p> <p>The intent of the Rehabilitation Strategy is to refine the post-mining land use of Springvale and Angus Place mining areas, in consultation with relevant stakeholders. No changes to the Rehabilitation Strategies are considered warranted.</p>
<p>Angus Place and Springvale Section 2.2.2 – Current land use:</p> <p>Current land use does not include commercial forestry. This is an historic land use.</p>	<p>Section 2.2.2 will be updated. Reference to forestry will be removed from text.</p>
<p>Angus Place and Springvale Section 2.2.3 – Proposed land use:</p> <p>Proposed land use mentions access trails being retained for use in Gardens of Stone State Conservation Area (GoS SCA). Any retention of access trails requires consultation with NPWS.</p> <p>Planning for proposed land use should anticipate that the land zoning under the Lithgow LEP will change to C1 – National Parks and Nature Reserves to align with the gazettal of the land as GoS SCA. Final landform planning should anticipate this change and set objectives accordingly.</p>	<p>Section 6 of the Springvale Rehabilitation Strategy states “In accordance with the Springvale Mine Extension Project Decommissioning and Rehabilitation Strategy and as outlined within this RMP, Centennial Coal propose to retain all tracks to infrastructure facilities on Newnes Plateau in the final landform for use as fire trails or access tracks by recreational users of the Gardens of Stone State Conservation Area. It is noted that many of the trails are not a result of mining activities. However, unless retention for future use, including management responsibility, has been accepted by NPWS access roads associated with mining disturbance will be rehabilitated following the cessation of mining activities.”</p> <p>Minor changes have been made in Section 2.2.3 and Section 6 of the Springvale Rehabilitation Strategy to</p>



BCD and NPWS Comment	Centennial Response
	<p>reflect that many of the trails are not a result of mining activities and “However, unless retention for future use, including management responsibility, has been accepted by NPWS access roads associated with mining disturbance will be rehabilitated following the cessation of mining activities.”</p> <p>Section 6 of the Angus Place Rehabilitation Strategy states “In accordance with the Mod 1 Environmental Assessment (RPS 2010) Mod 2 Environmental Assessment (RPS 2012), infrastructure areas will generally be rehabilitated to woodland commensurate with adjacent vegetation. The access track from Sunnyside Road to the Ventilation Facility (APCVS2) will be rehabilitated following the cessation of operations and the trenched infrastructure installed adjacent to existing access tracks has been rehabilitated. It is proposed that some access roads and tracks on the Newnes Plateau may be retained in the final landform for monitoring, use as fire trails or access tracks by recreational users of Gardens of Stone State Conservation Area.”</p> <p>It is noted that the above text highlights Sunnyside Road was existing and the disturbance associated with adjacent trenched infrastructure was rehabilitated. The small section of new track from Sunnyside Road to the Ventilation Facility (APCVS2) will be rehabilitated following cessation of operations. The Angus Place Rehabilitation Strategy will be revised to reflect the following wording for “However, unless retention for future use, including management responsibility, has been accepted by NPWS then access roads associated with mine disturbance will be rehabilitated following the cessation of mining activities.”</p> <p>Section 2.2.3 of each Rehabilitation Strategy will be updated to reflect the anticipated changes to the Lithgow LEP, highlighting the land is expected to transition to C1 – National Parks and Nature Reserves to align with the GoS SCA.</p>
<p>Angus Place and Springvale table 3.1 – Infrastructure to be decommissioned:</p> <p>Trenched power cables and water pipelines are designated to be isolated and made safe. The rehabilitation plans should state whether these will be removed or remain in-situ.</p> <p>Substations and switchyard –concrete pads should also be removed.</p> <p>Tanks – any concrete pad or other footings that supports these tanks should be removed</p>	<p>Section 3.1 of each Rehabilitation Strategy will be updated to include:</p> <ul style="list-style-type: none"> <li>- Trenched powerlines and water pipelines will be left in-situ in accordance with the approvals.</li> <li>- Concrete pads belonging to substations, switchyards and tanks as well as footings would be removed during decommissioning.</li> </ul>
<p>Angus Place and Springvale Section 3.4 – Infrastructure:</p>	<p>Text has been updated to reflect that rehabilitation will be undertaken in accordance with the RMP and in</p>

BCD and NPWS Comment	Centennial Response
<p>The rehabilitation work occurring on the Newnes Plateau should be completed in consultation with NPWS to ensure landowner sign-off can be achieved.</p>	<p>consultation with NPWS (or the prevailing landowner at the time of rehabilitation).</p>
<p>Angus Place and Springvale Section 6 – Proposed future use of rehabilitated areas:  Any roads proposed to be left in-situ require consultation with NPWS.</p>	<p>The following wording has been included: “However, unless retention for future use, including management responsibility, has been accepted by NPWS then access roads associated with mine disturbance will be rehabilitated following the cessation of mining activities.”</p>

25<sup>th</sup> May 2023

Department of Planning and Environment  
Post-Approval Documentation

To whom it may concern,

**RE: Centennial Rehabilitation Management Strategies – Stakeholder Consultation and DPE Submission for Approval**

Centennial are submitting the Rehabilitation Management Strategies to the Department of Planning and Environment (DPE) for approval in accordance with the following development consent Conditions:

- Northern Coal Services Project: Schedule 3, Condition 28A of SSD-5145;
- Awaba Colliery: Schedule 3, Condition 29A of MP 10\_0038;
- Springvale Mine Extension Project: Schedule 4, Condition 31A of SSD-5594;
- Myuna Colliery Mining Project: Schedule 3, Condition 34A of MP 10\_0080; and
- Angus Place Coal Project: Schedule 3, Condition 36C of MP 06\_0021.

Note: To align with Centennial operational management, a single combined Rehabilitation Strategy for Northern Coal Services and Awaba Colliery was developed.

In accordance with the requirements of these development approvals, Centennial have issued these Strategies out for consultation to the relevant Stakeholders listed within the respective development approvals on either 24<sup>th</sup> or 25<sup>th</sup> May 2023.

Whilst we await feedback from these Stakeholders, Centennial are submitting the Strategies into the Planning Portal for each site, in compliance with the common requirement for Strategies to be issued to the Secretary for approval within 6 months of the Determination of the consent Modifications – noting that Determination was received on 25<sup>th</sup> November 2022 for all consents listed above.

On receipt of any feedback arising from the consultation, Centennial will review and if necessary, revise the Rehabilitation Strategies and resubmit to the DPE for approval.

We trust this course of action meets with your support and understanding. Please do not hesitate to contact the undersigned on 0415 323 096 should you require clarification or further information.

Yours sincerely



**Russell Hart**  
Group Manager Projects & Rehabilitation  
Centennial Coal Pty Limited

**Enclosed:** Rehabilitation Management Strategy

**Centennial Coal Company Pty Limited**  
ABN 30 003 714 538

Level 20, 1 Market Street,  
Sydney NSW 2000, Australia  
T: +61 02 9266 2700  
E: [info@centennialcoal.com.au](mailto:info@centennialcoal.com.au)  
[www.centennialcoal.com.au](http://www.centennialcoal.com.au)

