

2023 WILL BE A YEAR OF MILESTONES

2023 is going to be a big year for the team at RZ Resources. We ended last year with everyone working solidly towards our goal of building a world class, Australian owned and operated mineral sands mine at our flagship deposit the COPi project, situated on Warrick and Sunshine/Huntingfield stations.

At the end of last month, we lodged our **Mining Lease Application (MLA)** over both stations, with the actual mine site being positioned across the middle of both properties. The mining lease is only part of the approval process and will be now on hold, pending submission and acceptance of our **Environmental Impact Statement (EIS)** which will form our **Development Approval (DA)**.

THE MINING APPROVAL PROCESS

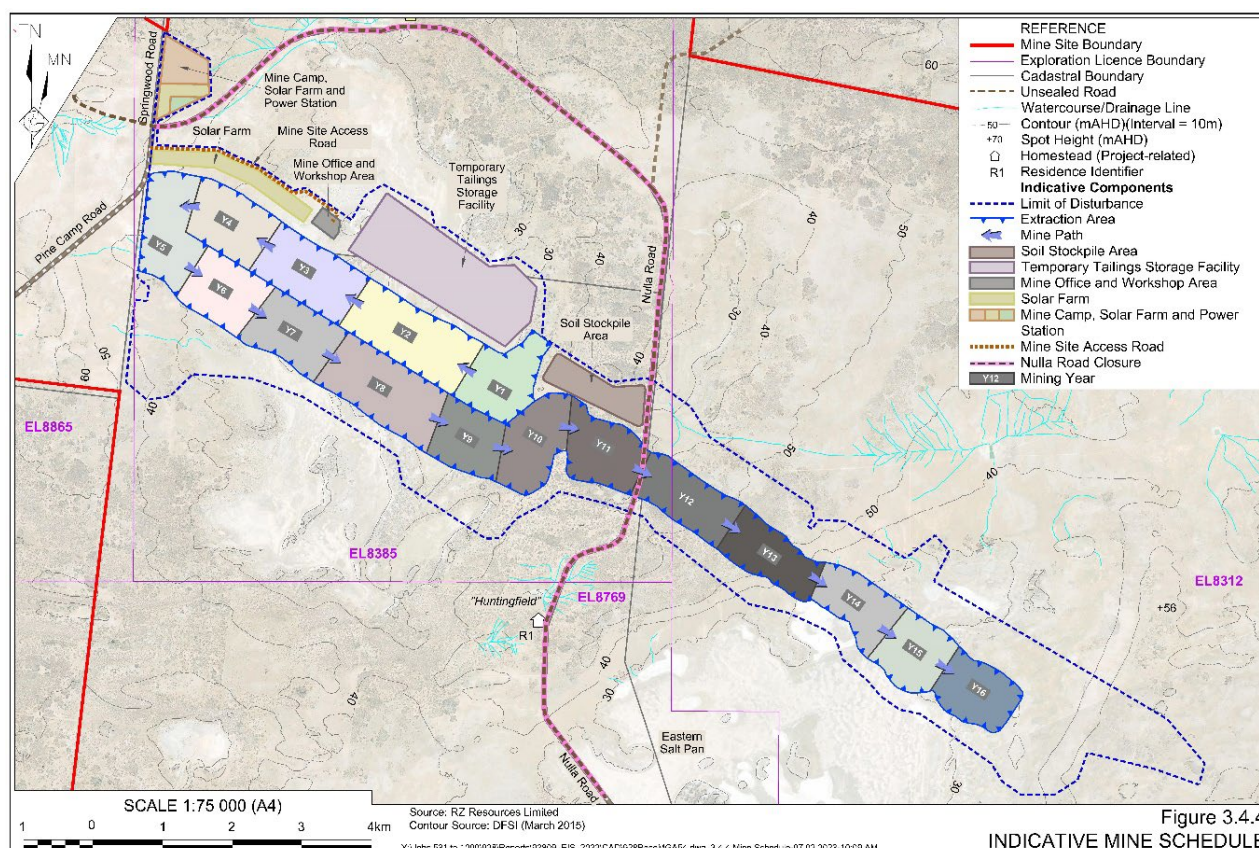
Exploration Lease Approvals and Mining Lease Approvals are administered by the Mining, Exploration and Geoscience Department of Regional NSW and the NSW Resources Regulator. Mining Leases can only be approved following a Development Approval granted by the NSW Department of Planning and Environment and a DA can only be granted following an Environmental Impact Assessment process through the State Significant Development approvals process.

The entire process from application of MLA, and DA can take many years to complete and for COPi, there will be many milestones along the way during this year. Once a mine is approved, the approvals process shifts to regulation of the mine and application must be made to complete a life of mine rehabilitation plan, as well as any Environmental Protection Agency licensing that may be required.

THE COPi EIS

Development of The Copi Project EIS has been in progress since late 2020 and includes a wide array of studies and reports from independent third-party experts in the fields of: Air Quality, Noise, Traffic and Transport, Surface and Groundwater, Biodiversity, Soils, Economics and Social impacts.

These studies have now been reviewed, summarized, and collated into the EIS document and will be presented for public exhibition in the next few months. Following that process and community feedback, the government agencies will also provide their feedback, and hopefully, eventual approval of the mine in mid to late 2023.



CONSULTING WITH OUR NEIGHBOURS AND THE COMMUNITY

As part of our commitment to be a good neighbour and have transparent communications with those who may be most affected by our project, RZ Resources would like to extend an invitation to the neighbors and stakeholders who have received this update to get a personal, one-on-one presentation on the EIS prior to public exhibition of the document.

Tracy and I will be contacting you all to arrange an information session sometime during March, or alternatively you can give us a call to discuss what time would suit you best.



CONNECT WITH US

Further questions or feedback about the EIS or any community / environmental matter, please contact:

Paul Smith
GM – Environment,
Sustainability and Governance
psmith@rzresources.com
0408 766 186

Tracy Smith
Project Officer
tsmith@rzresources.com
0448 871 333

Or visit the RZ Resources [website](https://www.rzresources.com) or contact:

rzresources.com

