

Project Update – November 2023

COPI Mine Environmental Impact Statement Modification

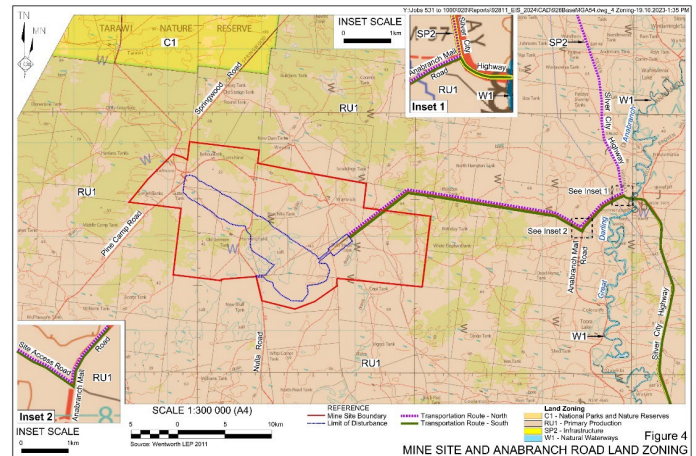
RZ TO MODIFY THE COPI EIS

Since our last update in February, RZ Resources has been hard at work completing the COPI project EIS. As part of the submission process, NSW state government Planning and Environment officials visited our site to see what we were proposing on the ground. The visit was a very positive one, with some small suggestions made to improve the community outcomes of the project and lessen our impacts on the environment.

At the time of this meeting, RZ Resources had also completed a full review of the latest drilling results and had significantly enlarged the projects' mineral resource.

So, taking the suggestions of the state government and combining it with the revised resources for the project, RZ have been hard at work, producing a revised project footprint and schedule for the project.

We are excited because the revised project now improves the outcomes for not just the project, but for our immediate neighbours, nearby landholders and local government by reducing the potential to impact people's homes, the local road network and reducing disruption to grazing activities in the area.



WHAT ARE THE CHANGES?

Mining of the COPI project will now commence on Warwick Station, instead of Huntingfield Station. The mine will spend over a decade solely on Warwick Station, with a small part of Nulla Stations disrupted early in the mine life to accommodate a temporary water dam and tailings area.

Significantly, the mine access road will change from the originally proposed, Nulla / Springwood Road to a dedicated access road and services corridor through Coleraine and Bunnerungie Stations to the Anabranch Mail Road. This shorter haulage distance will reduce the impact on the local road network significantly and avoid passing any residences.

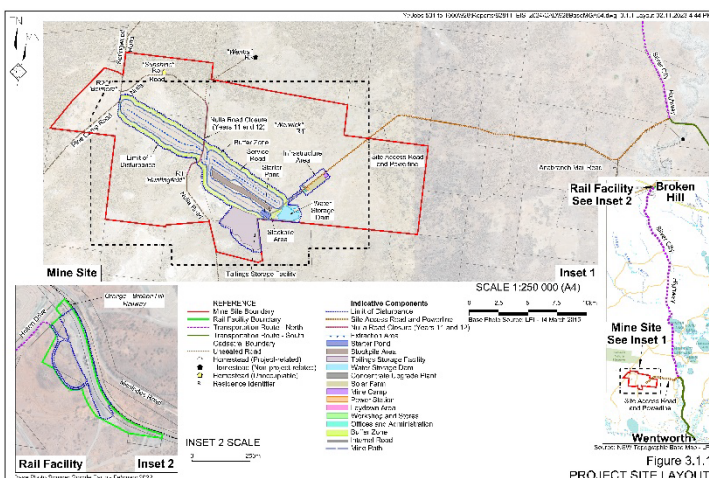
Haulage to Broken Hill along the Silver City Highway hasn't changed, with access now being just north of the Bunnerungie Bridge.

Nulla Road closure will now be only temporary, at about year 11 or 12, and reduced to the section between Huntingfield Station homestead and the access road to Wenba Station, to allow those landholders continued access through their original access points.

The proposed contractors' camp and mining infrastructure will now be relocated, closer to the mine's new start point and away from the homesteads on Huntingfield and Belmore Stations, significantly reducing the potential for noise, light, and air quality impacts.

A significant improvement to the project is now the possibility of grid connection, reducing our CO2 emissions profile and allowing us to access green power.

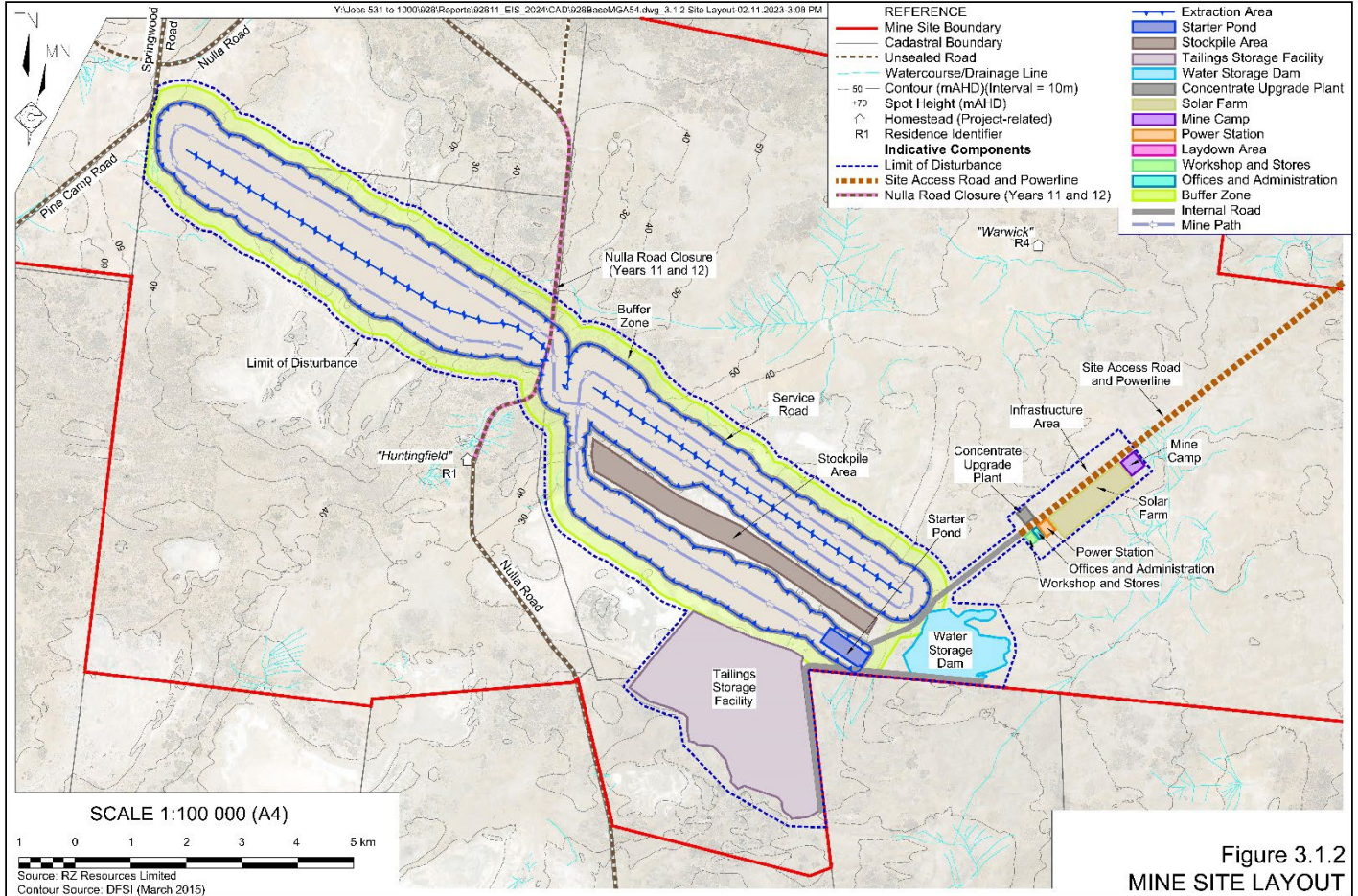
The mine life has also increased to 20 years, meaning the project will be able to support the jobs and economy of the Wentworth Region for longer.



WHAT IS NEXT?

To accommodate the changes to the mine plan, RZ Resources are busy updating our Environmental Impact Statement which is now expected to be revised and submitted to the government early in 2024.

As part of this revision, RZ Resources will also apply for a new mining lease over Warwick and part of Nulla Station, as well as an access corridor through Coleraine and Bunnerungie Stations. This application is expected in the next month, with affected landholders and RZ Resources to reach agreements over the next few months, prior to lodgment of the EIS.



CONNECT WITH US

Further questions or feedback, please contact:

Paul Smith

GM – Environment, Sustainability and Governance

psmith@rzresources.com 0408 766 186

Tracy Smith

EHS and C Advisor

tsmith@rzresources.com 0448 871 333

Or visit the RZ Resources [website](https://www.rzresources.com) or contact:

rzresources.com