

Project Update – March 2024

COPI Mine Environmental Impact Statement is now ready for submission to Government.

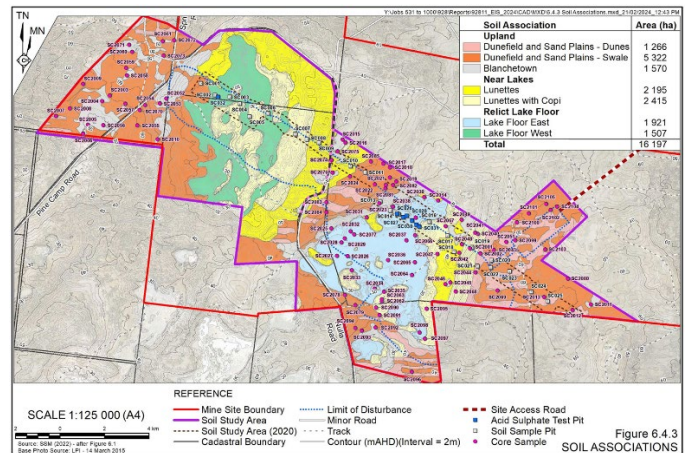
RZ HAVE FINALISED THE COPI EIS

Since our last update in November, RZ Resources has been hard at work finalising the COPI project EIS. We can now present to the community and NSW state government a comprehensive environmental, social and economic impact assessment of our COPI project.

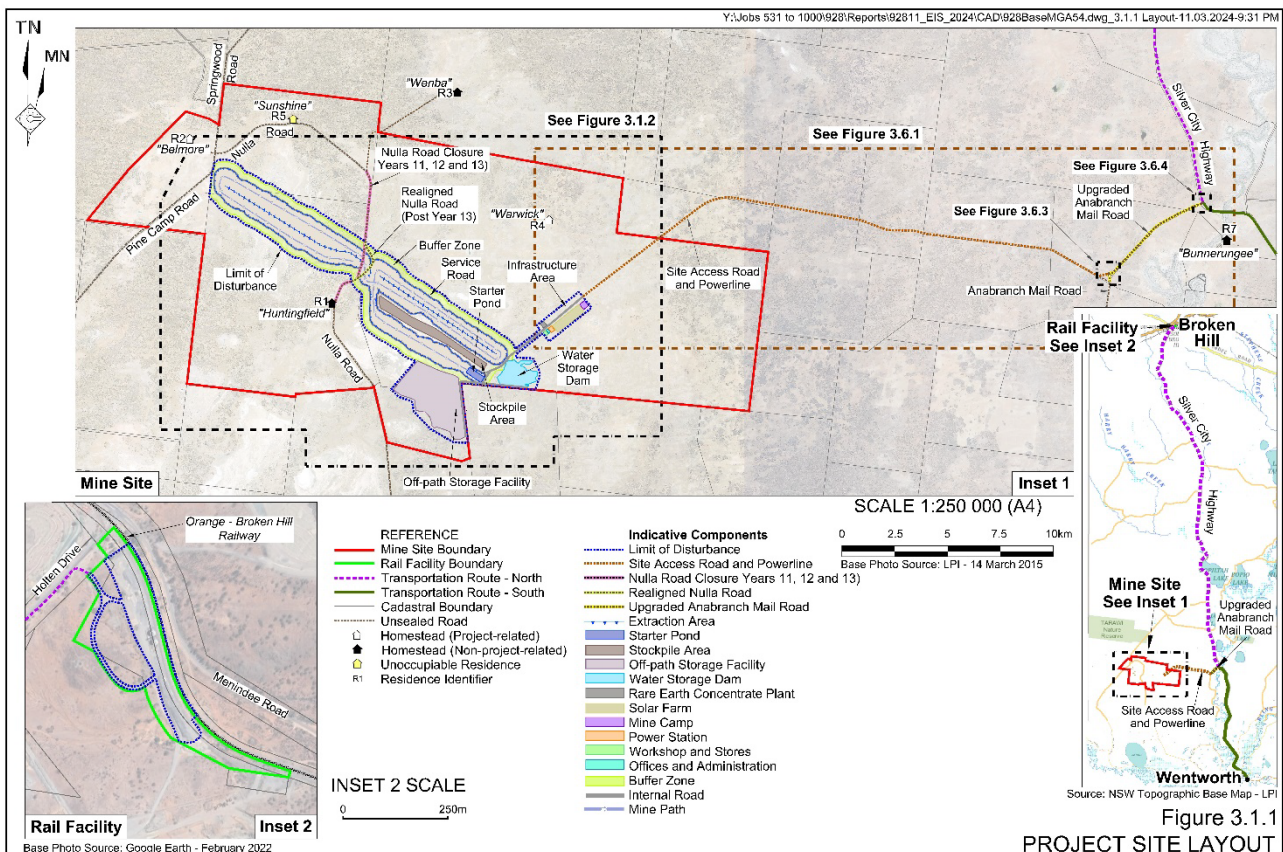
Since 2020, RZ and teams of experts have meticulously surveyed the proposed mining lease and haul route. These surveys have fed into multiple re-designs of the project and now, we are confident we have a project that is the best balance of disturbance vs the benefits such a project can bring.

We are proud of this achievement and now look forward to hearing from you, the government, and the public what you think of our proposal. All feedback is welcomed of course.

We are excited because the revised project now improves the outcomes for not just the project, but for our immediate neighbours, nearby landholders and local government by reducing the potential to impact people's homes, the local road network and reducing disruption to grazing activities in the area.



Soil Survey



WHAT IS THE NEXT STEP IN THE PROCESS?

Currently, the department of Planning and Environment are reviewing our EIS for completeness, a process called adequacy. Whilst that is going on, RZ personnel will be active in the community, sharing the findings of the EIS. We intend to do this between the 8th and 19th of April, and again in May for anyone we might miss.

Several meetings are already scheduled, so if you would like a one-on-one session, please don't hesitate to contact us via email or the number provided below.

We will also be updating our website with a series of fact sheets, giving more detail on the impacts and benefits of the COPI project. These will also be distributed to everyone on our stakeholder list.

Following adequacy, the EIS will be advertised publicly, for a period of 28 days, to allow the public to make comments or submissions. We encourage everyone who is interested in the project to go to the department of Planning and Environment's website and make a comment. Public exhibition is expected in early May, RZ will send out another update to you all when we know when this is to occur.

WHAT HAPPENS AFTER THAT?

Once the public submission period is closed, RZ will receive a report from the Department of Planning and Environment, outlining any concerns raised by the public and potentially outlining any further work that may be required by the various other state agencies that assess impacts of major projects. This can be a lengthy process and is expected to take at least 12 months to complete.



CONNECT WITH US

Further questions or feedback, please contact:

Paul Smith

GM – Environment, Sustainability and Governance

psmith@rzresources.com 0408 766 186

Tracy Smith

EHS and C Advisor

tsmith@rzresources.com 0448 871 333

Or visit the RZ Resources [website](https://www.rzresources.com) or contact:

[rzresources.com](https://www.rzresources.com)