

CCSN - Blood Molybdenum

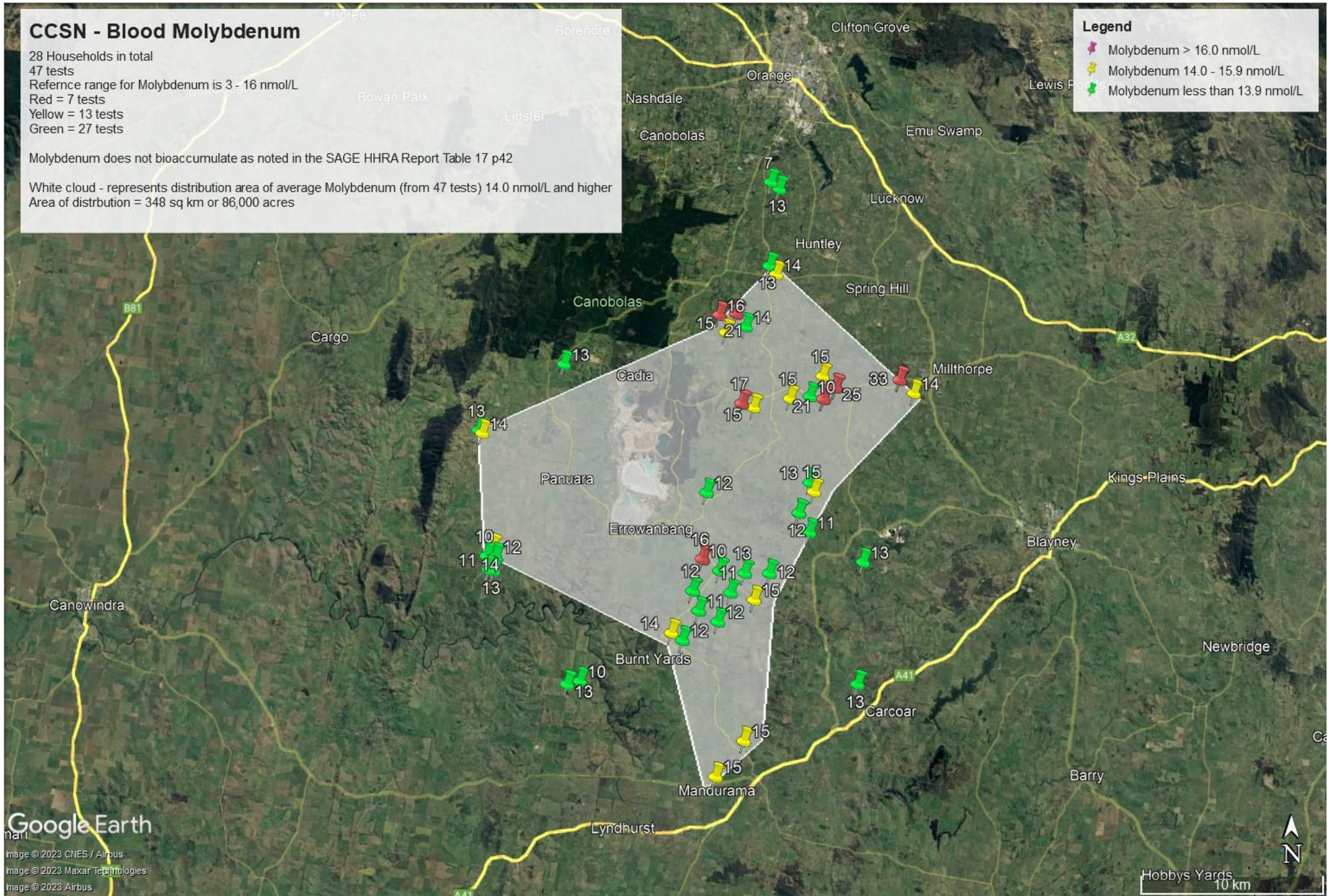
28 Households in total
47 tests
Reference range for Molybdenum is 3 - 16 nmol/L
Red = 7 tests
Yellow = 13 tests
Green = 27 tests

Molybdenum does not bioaccumulate as noted in the SAGE HHRA Report Table 17 p42

White cloud - represents distribution area of average Molybdenum (from 47 tests) 14.0 nmol/L and higher
Area of distribution = 348 sq km or 86,000 acres

Legend

- Molybdenum > 16.0 nmol/L
- Molybdenum 14.0 - 15.9 nmol/L
- Molybdenum less than 13.9 nmol/L



Google Earth

Image © 2023 CNES / Airbus
Image © 2023 Maxar Technologies
Image © 2023 Airbus

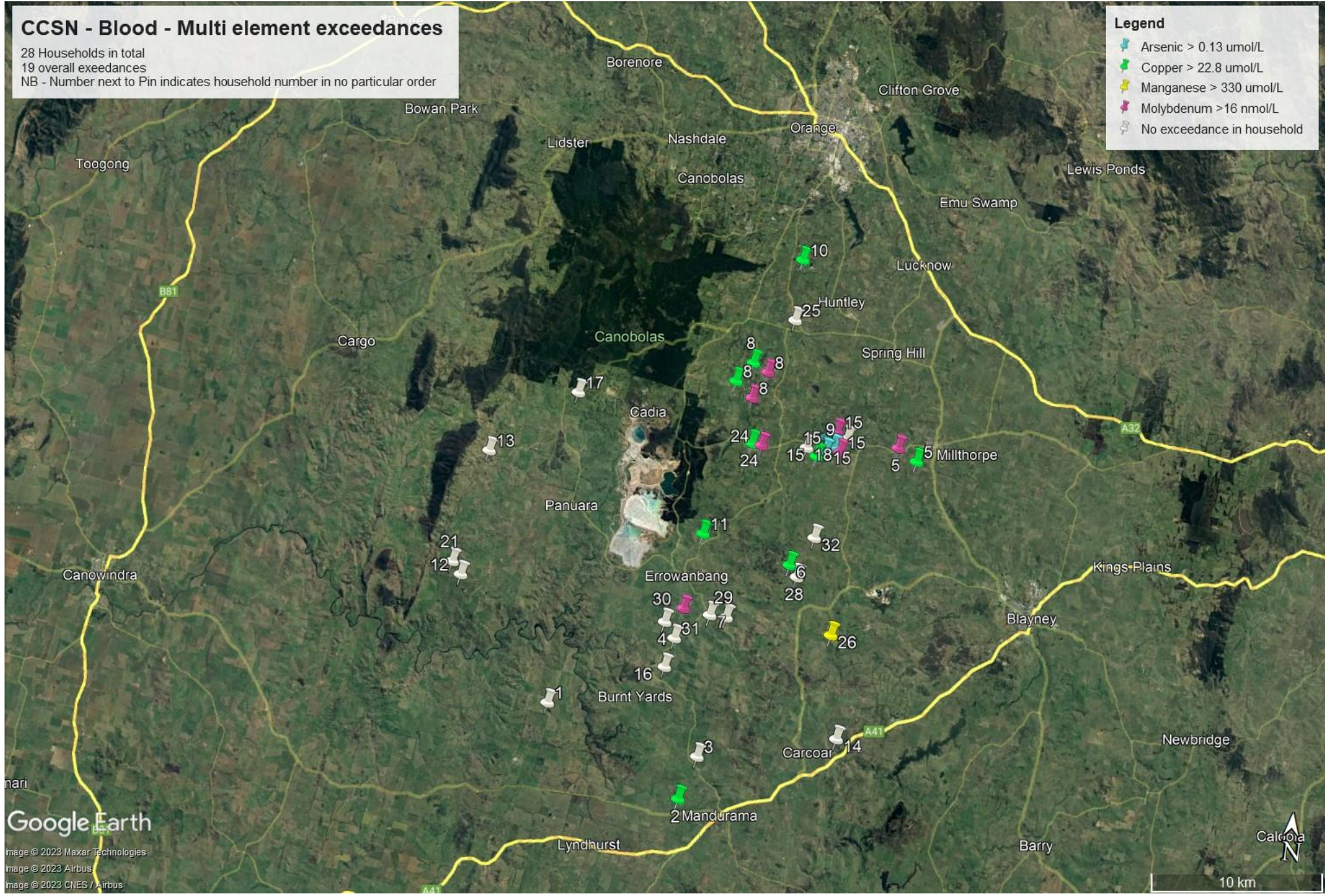
Hobbys Yards
10 km

CCSN - Blood - Multi element exceedances

28 Households in total
19 overall exceedances
NB - Number next to Pin indicates household number in no particular order

Legend

- Arsenic > 0.13 umol/L
- Copper > 22.8 umol/L
- Manganese > 330 umol/L
- Molybdenum > 16 nmol/L
- No exceedance in household



CCSN - Hair - Multi element exceedances

28 Households in total
37 overall exceedances
NB - Number next to Pin indicates household number in no particular order

- Legend**
- Cobalt > 1.1 nmol/g
 - Copper > 1.51 umol/g
 - Manganese > 43.9 nmol/g
 - Nickel > 27.2 nmol/g
 - No exceedance in household
 - Selenium > 23.3 nmol/g

