

WinZero Inc
P.O. Box 1193
Bowral NSW 2576

info@winzero.com.au

www.winzero.com.au

Proposed Sutton Forest Sand Mining Quarry Amended Application (SSD-6334)

This submission is made on behalf of WinZero Incorporated INC9887626 ('WinZero').

WinZero is an incorporated association formed following the Declaration of a Climate Emergency by the Wingecarribee Shire Council in February 2020. WinZero's purpose is to protect the natural environment, including by educating and involving the community, all levels of government and businesses in Wingecarribee Shire about living and operating in a way that will enable the net zero emissions target to be met before 2050, and researching the most effective ways to reduce carbon emissions and encouraging wide scale awareness and adoption.

We are writing to express **our strong objection** to the proposed Sutton Forest Sand Quarry. This quarry would be located in a biodiversity corridor and would destroy habitat for koalas and other native wildlife. It would also increase noise and dust pollution in the area and have a negative impact on the local community.

The South East and Tablelands Regional Plan 2041 promised the protection and enforcement of regional biodiversity corridors, particularly the Great Western corridor, which is the major corridor running down the western side of the Shire.

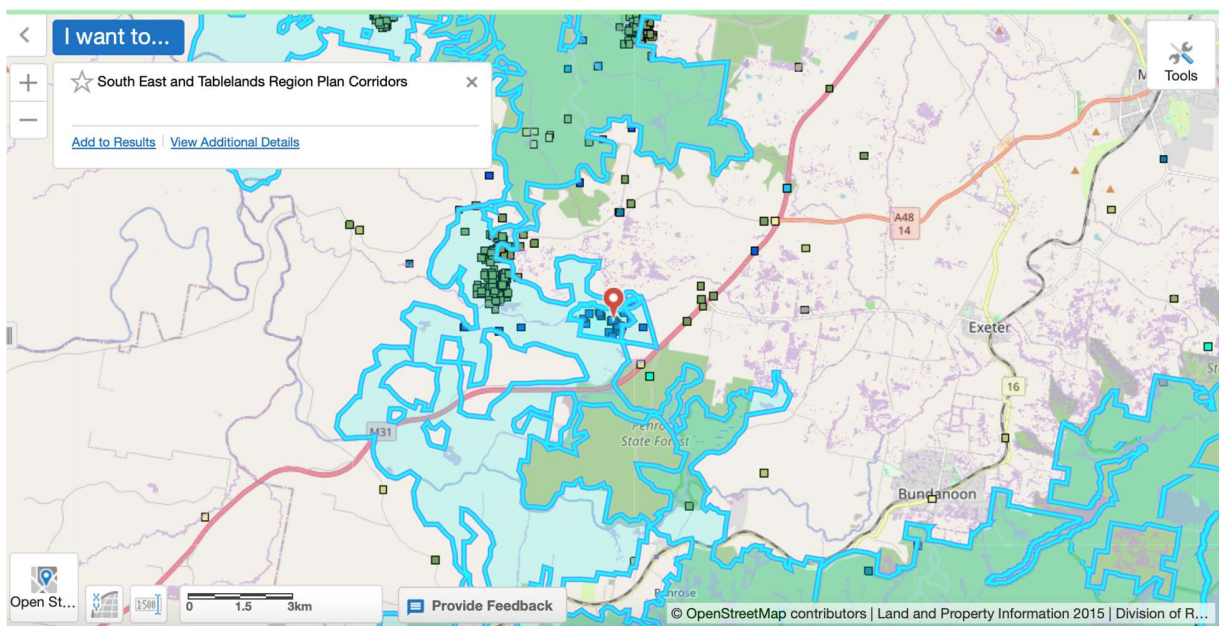
This corridor is essential for the survival of many species of native wildlife, including koalas. Koalas are now listed as critically endangered in New South Wales, and this corridor provides them with a vital link between fragmented habitats.

Here are some of the reasons why this regional biodiversity corridor needs to be protected and enforced:

- It provides a vital link between fragmented habitats. This allows koalas and other wildlife to move around freely and find food, mates, and shelter.
- It helps to maintain genetic diversity. When koalas and other animals are able to move between different populations, it helps to reduce inbreeding and ensure that the population is healthy and resilient.

- It helps to reduce the risk of extinction. If one population of koalas is wiped out due to disease, fire, or habitat loss, other populations can recolonize the area.
- It plays an important role in ecosystem services. Koalas and other wildlife help to control pests, pollinate plants, and disperse seeds. This benefits everyone in the community.

Map below displays the location of the Sand Quarry in the South East and Tablelands Regional Corridor and Koala Sightings.



WinZero requests that the Department refuse the application for the Sutton Forrest Sand Quarry at 13302 Hume Highway, Sutton Forest.

Sincerely,

Derek White
Secretary