

10/10/23

Director – Energy Assessments,  
Development Assessment,  
Department of Planning and Environment,  
4 Parramatta Square,  
12 Darcy Street,  
Parramatta NSW 2150

Dear Sir/Madam,

**SUBMISSION IN RESPONSE TO THE ENVIRONMENTAL IMPACT STATEMENT OF THE  
HUMELINK PROJECT – APPLICATION NO SSI-36656827**

I hereby submit this response to the HumeLink Environmental Impact Statement report.

I object to the HumeLink proposal on several grounds, as follows:

My main points for your consideration,

- **Bushfire Concerns** – the project will be an increasing the risk in regards to bushfires by undermining ground and aerial firefighting options and potentially starting fires. As a deputy RFS captain I want to ensure my own safety, my family then fellow RFS members safety. And aboveground seams to be a cause for concern. Where as undergrounding the problem would be resolved.
- **Visual Amenity** –
  - as an impacted landowner on our farmland – there is no data in the EIS to discuss the amount dwellings that are outside the corridor. The route selection was made because of the only so many dwellings were inside the 500 m corridor. Killimicat is a working property and we given the line because we are a large landowner without dwelling on one side of the property. The route selection could have been different if we have more dwellings. I
  - Have the people outside this area that must look at it had mitigation. All people I have spoken to have not.
  - Has a visual, noise, risk assessments been done for people working on productive farms and the WHS side for them as employees and employers moving into the future.
  - Was a visual and landscape assessment done for the route selection?
  - The Snowy Valleys is going to become very ugly and the tourism and economy will be affected.
- **Telecommunications hut** – When reading the EIS it came to our attention the Killimicat telecommunications hut.

### 3.5. Telecommunications hut

Telecommunications huts are generally required to be located along transmission lines greater than 135 kilometres long. Telecommunications huts contain optical repeaters, which boost the signal in the OPGW, and back-up power supplies to ensure the stability of the communications system over long distances. Telecommunications huts facilitate the communication of protection and control systems between substations.

#### 3.5.1. New telecommunications hut at Killimicat

One telecommunications hut is required for the project. The hut would be located adjacent to existing transmission line structures at Killimicat (about 10 kilometres north-east of Tumut). Its dimensions would be six metres by three metres. The hut's main features would include:

- a metal cladding exterior
- a security fence around the perimeter of the optical repeater site, enclosing an area of approximately 400 square metres
- connection to the local power supply via a new power line about 980 metres long.

The requirements for an APZ for the telecommunications hut would be investigated and confirmed during detailed design (refer to *Technical Report 13 – Bushfire Risk Assessment*). Access to the telecommunications hut during operation would be via the transmission line easement and nearby access track retained for operation.

Figure 3-10 shows the location of the proposed telecommunications hut and Figure 3-11 provides photo of a typical an of a telecommunications hut.

When we asked Transgrid employees about this long bit on our neighbours place at a previous meeting it was told to us it was because of access – we have been there and as you can see the road and house will be the access tracks.

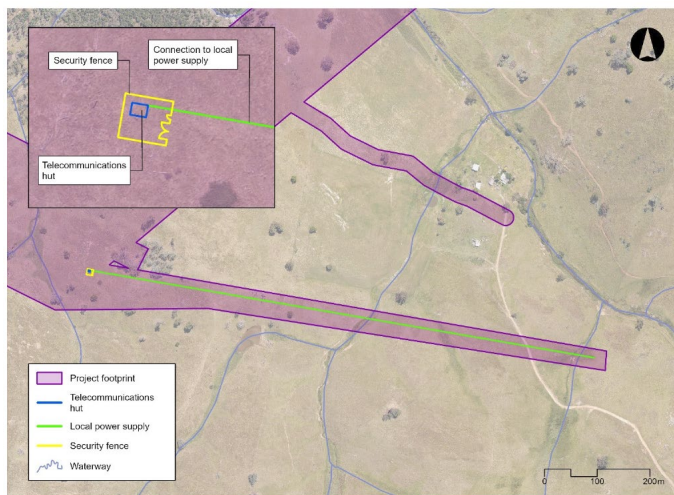


Figure 3-10 Location and indicative layout of the proposed telecommunications hut at Killimicat

Why didn't they tell us it was coming?

Whose place is the telecommunications hut on?

Why do we find out and be lied too over and over again?

This property is our home. And we deserve to know everything when asked.

Why There?

- **Alternatives and options considered.**

The first fact sheet from Transgrid stated this (**Assessment Criteria** Transgrid seeks to determine a route that minimises net impact. Transgrid applies guiding principles to the route selection

process including: keeping the transmission line as straight as possible, selecting the shortest possible route between two substations and where possible paralleling existing transmission easements or using public land. In conjunction with these principles, Transgrid uses a constraints mapping process which considers factors including social considerations, environmental considerations, land use considerations, network resilience and cost.) if you look a maps linked to this this isn't really doing any of this, we engaged with TransGrid to discuss the workings of our farmland and the tier 2 constraints. To be told we didn't fit into that category. The project facilitators and Politian's at the time did not follow the criteria. And we then were thrown under a mess of under value compensation figures. And bullying tactics to get us to proceed with them ruining the legacy I have put the past 30 years of my life into for my 3 children and 10+ grandchildren. I would be happy to discuss this more if needed.

**Finally this project and been a very mental straining ordeal for myself and my family.**

**It has taken up time during the day and hours of sleep for everyone so saddened and shocked that we have been delt this card.**

**We love Killimicat, the cattle, sheep and all of the flora and fauna. And it will now be divided and a massive metal risk causing power highway will replace the most beautiful scenery in southern NSW. Please look into the undergrounding of this project to help everyone impacted that includes all people who have to look at it. They say over 10km away you will be able to see it.**



- I acknowledge and accept the Department of Planning and Environment's disclaimer and declaration.
- Declaration of political donations: No

Yours sincerely,

Harold Lucas