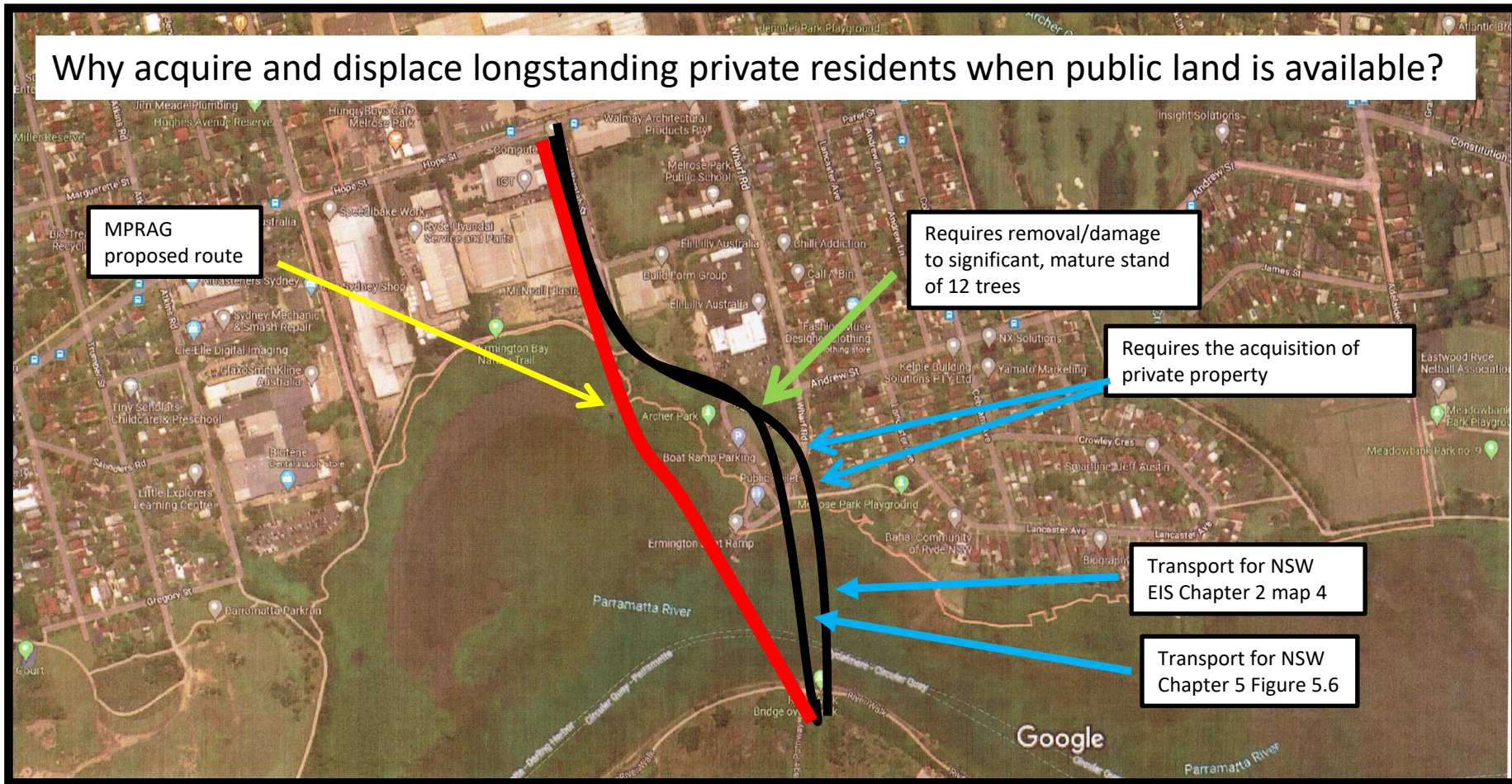


# Melrose Park bridge

## Current v Alternative PLRS2 routes

Why acquire and displace longstanding private residents when public land is available?



### Alternate route

- No private property acquisition or displacement required
- Shorter route from Hope St to opposite side of river (748m)
- No removal of significant mature trees
- Longer distance from bridge to existing residential houses (163 m)
- Accepted by more community organisations
- May prevent closure of boat ramp for 3 years

### Current Transport for NSW routes

- Up to 12 private properties to be acquired and displaced
- Longer distance from Hope St to opposite of river (849m)
- Removal of up to 12 significant mature Ironbark trees
- Closer distance to existing residential housing (32m)
- Requires closure of boat ramp for 3 years