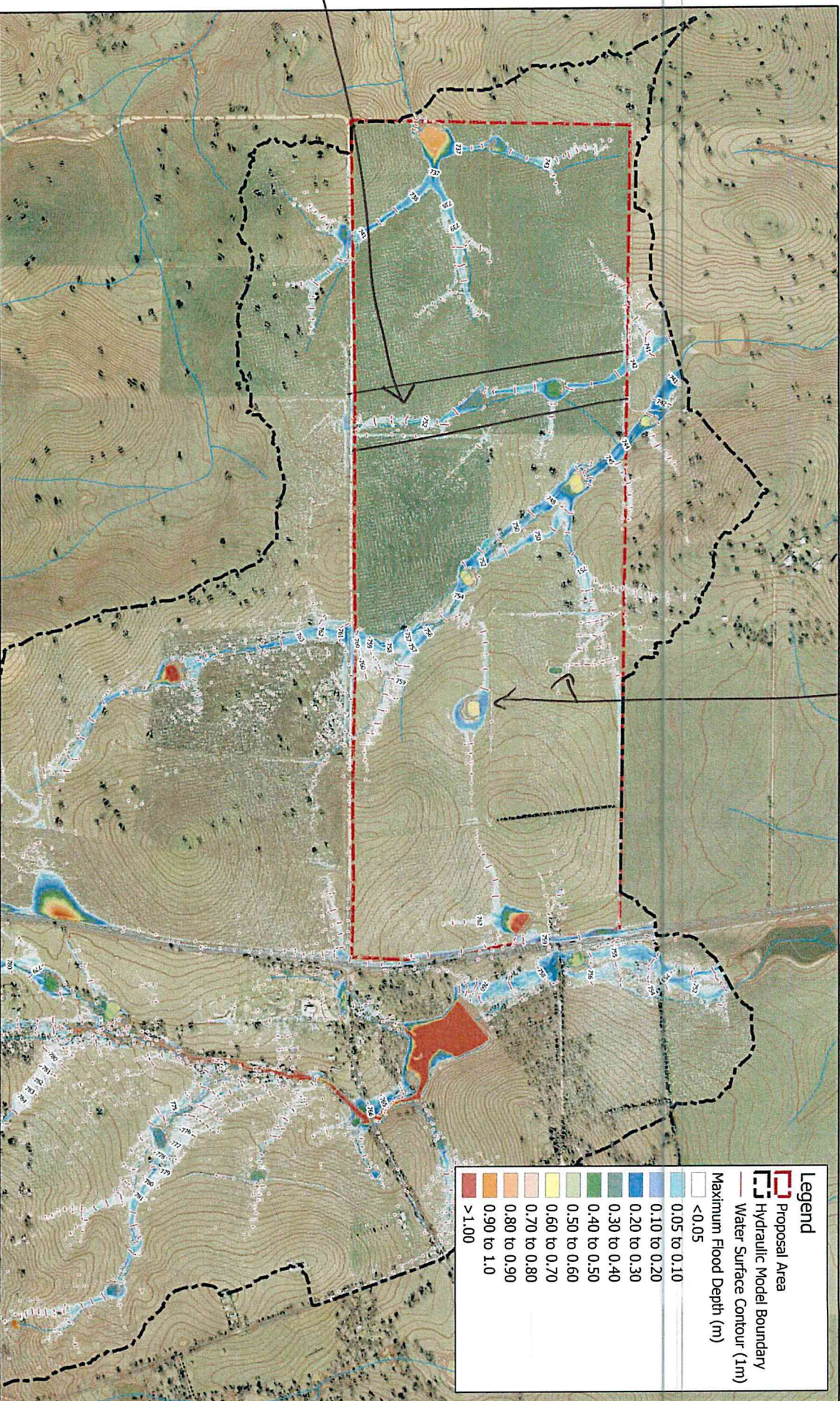


Watercourse built over,
2 dams removed

2
dams
removed

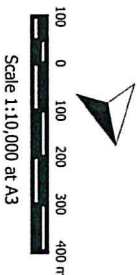


Legend

- Proposal Area
- Hydraulic Model Boundary
- Water Surface Contour (1m)
- Maximum Flood Depth (m)

<0.05	0.05 to 0.10	0.10 to 0.20	0.20 to 0.30	0.30 to 0.40	0.40 to 0.50	0.50 to 0.60	0.60 to 0.70	0.70 to 0.80	0.80 to 0.90	0.90 to 1.00	>1.00
-------	--------------	--------------	--------------	--------------	--------------	--------------	--------------	--------------	--------------	--------------	-------

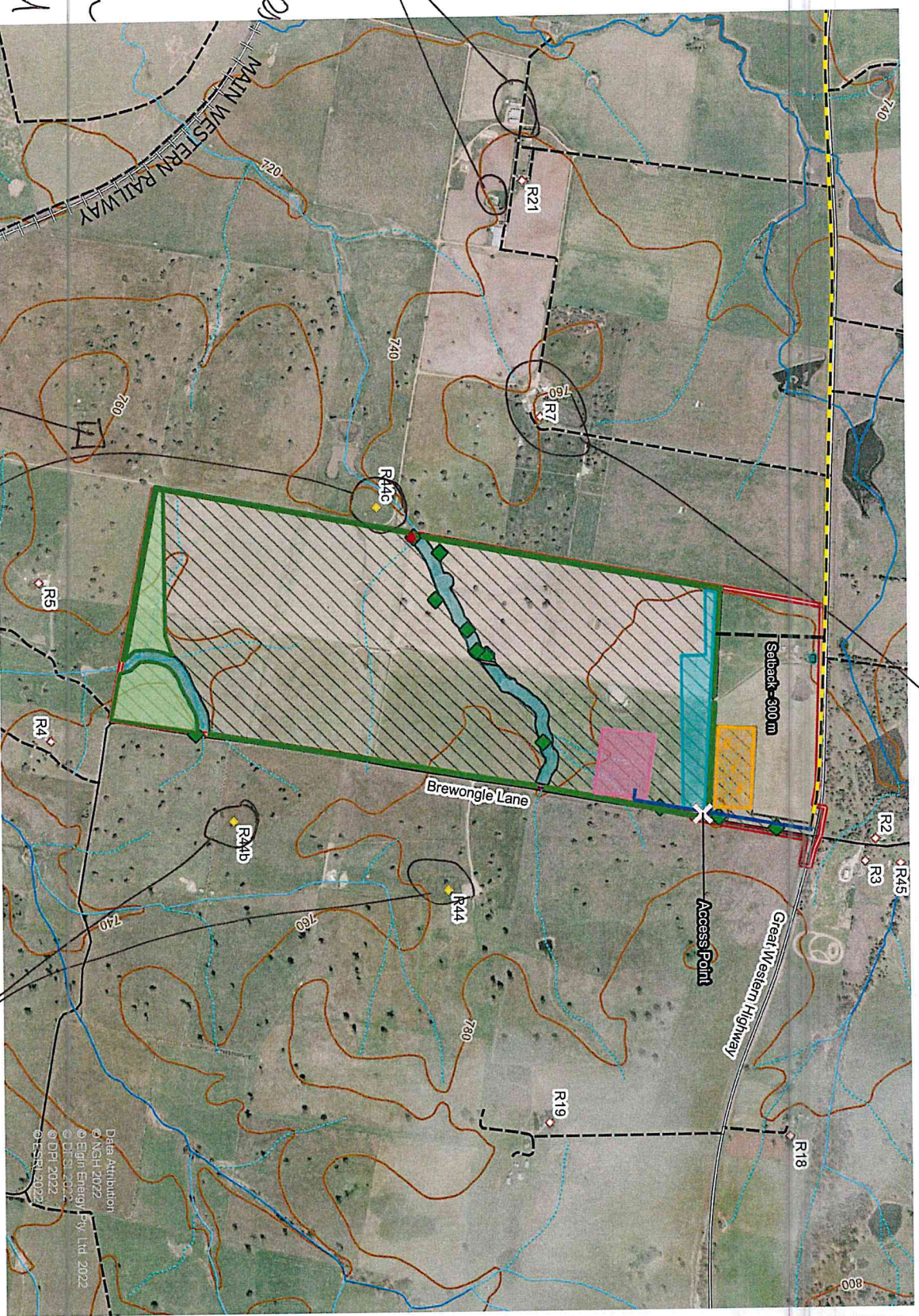
footprint.
sustainable engineering.
210 jambero rd, jambero,
nsw 2533 p: (02) 4237 6770



Footprint (NSW) Pty. Ltd. endeavors to ensure that the information provided in this map is correct at the time of publication. Footprint (NSW) Pty. Ltd. does not warrant, guarantee or make representations regarding the currency and accuracy of the information contained on this map.

GLANMIRE SOLAR FARM
FIGURE 2.1
PRE-DEVELOPMENT 5% AEP MAXIMUM FLOOD LEVELS AND DEPTHS
Rev 1 - 22 AUGUST 2022

RAY HAS 2 HOUSES HERE



OUR FUTURE HOUSE
OUR FUTURE HOUSE SITE
RAY'S FUTURE HOUSE SITE

Glanville Solar Farm EIS
Development Footprint Showing
Exclusion Zones and
Constraints

- Legend**
- Subject Land
 - Development Footprint
 - 66kV Infrastructure currently operated at 11kV
 - Strahler waterways
 - 1st Order Stream
 - 2nd Order Stream
 - 3rd Order Stream
 - Waterway Exclusion Zones
 - Aboriginal Heritage
 - Woodside Inn Building
 - Retained trees
 - Non Associated Receivers
 - Unapproved Potential Receivers
 - Railway
 - Road types
 - Main Roads
 - Highways
 - Unnamed roads
 - Indicative Infrastructure
 - Laydown Area
 - Vegetation Screening
 - Solar Array Exclusion Zone
 - Waterway Crossing
 - Substation and Battery Storage
 - Underground Easement
 - Access Point
 - Setback distance from Highway

Potential house sites

actual houses

Ref: 21-785 Glanville SF EIS 220211
Infrastructure updated 20220909
Author: Clair D
Date created: 06/10/2022
Datum: GDA94 / MGA zone 55

