

The Secretary  
NSW Department of Planning, Industry and Environment

18 March 2021

**ATTENTION: Nathan Stringer**

Dear Sir or Madam

I refer to the Department's below email of 16 March 2021 regarding the notice of exhibition of the Environmental Impact Statement (EIS) for State Significant Development SSD-8571481 TAFE NSW Construction Centre of Excellence at TAFE NSW Nepean Kingswood campus at 2-44 O'Connell Street, Kingswood (Lot 1 DP 866081). Submissions need to be made to the Department by 14 April 2021.

Please refer to Endeavour Energy's submission made to the Department via email on 30 July 2020 regarding the Request for Secretary's Environmental Assessment Requirements (SEARs) for I refer to your below email of 29 June 2020 from NSW Planning, Industry & Environment Request for the request for Secretary's Environmental Assessment Requirements (SEARs) for the State Significant Development SSD-8571481 at TAFE NSW Nepean Kingswood campus at 2-44 O'Connell Street, Kingswood (Lot 1 DP 866081) in the Penrith LGA for erection of a building known as the Western Sydney Construction Hub, to provide for 3,500 students over approximately 9,000 sqm. The building will provide flexible space for training purposes, exhibition and function space and shared workspace. The recommendations and comments provided therein generally remain valid.

Subject to the foregoing and the following further recommendations and comments Endeavour Energy has no objection to the Development Application.

- Network Capacity / Connection

Endeavour Energy has noted the following in the EIS addressing the suitability of the site for the development in regard to whether electricity services are available and adequate for the development.

## **7.8. INFRASTRUCTURE MANAGEMENT**

### **7.8.1. Utilities and Services**

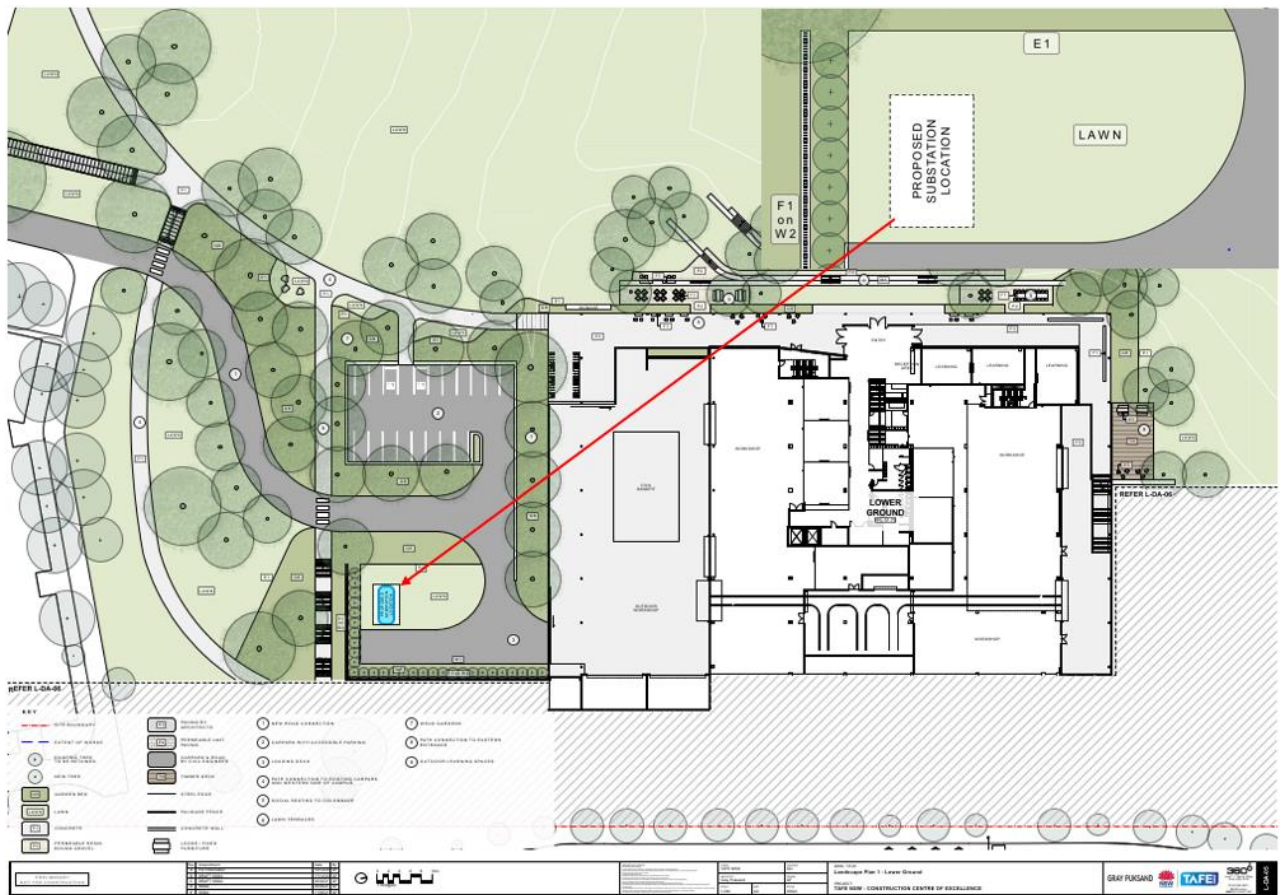
#### **Assessment**

JN Engineering undertook an assessment of the existing and augmented utilities required to service the development is provided. In summary:

- A new dedicated substation of 1000kVA will need to be provided on the site in accordance to service the anticipated maximum electricity demand. Further detail of the provision of this substation is currently being resolved, with consultation with Endeavour Energy currently underway to understand the existing HV network, line capacities and appropriate connection methodology. The location of this substation will similarly accord with Endeavour Energy requirements and the additional site-specific requirements outlined in the Utilities and Infrastructure Management Plan Report.

As such, Endeavour Energy's Network Connections Branch are managing the conditions of supply with the proponent and their Accredited Service Provider (ASP). The applicant will need to complete the application for connection of load process and in due course address the list of requirements included in the Supply Offer in order to comply with Endeavour Energy's standards and with the Terms and Conditions of the Model Standing Offer for a Standard Connection Service. Further advice can be obtained from Endeavour Energy's Network Connections Branch (via Head Office enquiries on business days on telephone: 133 718 or (02) 9853 6666 from 9am - 4:30pm.

Endeavour Energy has also noted that whilst not shown in the Architectural Plans, as shown in the following extract of Landscape Plan 1 - Lower Ground provision has been made for a 'Proposed Substation Location'.



Should you wish to discuss this matter, or have any questions, please do not hesitate to contact me or the contacts identified above or in Endeavour Energy's previous submission in relation to the various matters. Due to the high number of development application / planning proposal notifications submitted to Endeavour Energy, to ensure a response contact by email to [property.development@endeavourenergy.com.au](mailto:property.development@endeavourenergy.com.au) is preferred.

With the easing of the current COVID-19 health risk, whilst a significant number of Endeavour Energy staff are returning to the office they are at times still working from home. Although working from home, access to emails and other internal stakeholders can still be somewhat limited and as a result it may take longer than usual to respond to enquiries. Thank you for your ongoing understanding during this time.

Yours faithfully  
Cornelis Duba  
Development Application Specialist  
Network Environment & Assessment  
M: 0455 250 981  
E: [cornelis.duba@endeavourenergy.com.au](mailto:cornelis.duba@endeavourenergy.com.au)  
51 Huntingwood Drive, Huntingwood NSW 2148  
[www.endeavourenergy.com.au](http://www.endeavourenergy.com.au)



**From:** Erin White <Erin.White@planning.nsw.gov.au> **On Behalf Of** DPE PSVC Social and Other Infrastructure Mailbox

**Sent:** Tuesday, 16 March 2021 2:32 PM

**To:** Property Development <Property.Development@endeavourenergy.com.au>

**Cc:** Nathan Stringer <Nathan.Stringer@planning.nsw.gov.au>

**Subject:** Notice of Exhibition - TAFE NSW Construction Centre of Excellence (SSD-8571481) - Endeavour Energy



Planning,  
Industry &  
Environment

Attention: Mr Cornelius Duba  
Development Application Specialist  
Endeavour Energy

-via email-

[Property.development@endeavourenergy.com.au](mailto:Property.development@endeavourenergy.com.au)

Dear Mr Duba

The Department of Planning, Industry and Environment has received an Environmental Impact Statement (EIS) for the TAFE NSW Construction Centre of Excellence (SSD-8571481).

The EIS will be publicly exhibited from **Thursday 18 March 2021** to **Wednesday 14 April 2021**. All relevant documents may be viewed on the Department's website at:

<https://www.planningportal.nsw.gov.au/major-projects/projects/on-exhibition>.

The Department invites you to advise on the proposal, including advice on recommended conditions by **Wednesday 14 April 2021**.

If you have any enquiries, please contact Nathan Stringer on (02) 9993 3321 or via email at [nathan.stringer@planning.nsw.gov.au](mailto:nathan.stringer@planning.nsw.gov.au).

Kind regards

**Erin White**

**DA Coordinator, Social & Infrastructure Assessments**

Infrastructure Assessments | Department of Planning, Industry and Environment

T 02 8275 1183 |

4 Parramatta Square, 12 Darcy Street, Parramatta

[www.dpie.nsw.gov.au](http://www.dpie.nsw.gov.au)



Planning,  
Industry &  
Environment



Please consider the environment before printing this e-mail.