

5 May 2026

Attention: Patrick Copas

NSW Department of Planning, Housing and Infrastructure

Submitted via the NSW Planning Portal

Re: Objection to SSD-82052708 — Project Mars Data Centre, 12 Mars Road, Lane Cove West

I object to the proposed Project Mars Data Centre at 12 Mars Road and respectfully ask the Department to refuse consent.

I am writing as the grandfather of two grandchildren who attend Lane Cove West Public School and live within 500m of the proposed Project Mars data centre. Three afternoons a week I park in the local streets around the Lane Cove West Public School to pick up my grandchildren to take them home. I have a number of reasons for my objection, which I have set out below.

1. Proximity to residential and educational areas

The proposed facility is enormous: 49 diesel back-up generators, building heights well above the planning limit, mechanical plant running twenty-four hours a day. The EIS itself confirms that the nearest sensitive receivers include:

- **Lane Cove West Public School**, about 150 metres from the site;
- **Blackman Park** — where my grandchildren and hundreds of other children play sport during the week and every weekend — about 25 metres from the site;
- **Homes on Banksia Close and Wood Street**, also at around 25 metres; and
- **Childcare centre** operating inside the same business park.

Those are not distances at which the consequences of getting noise and emissions wrong are theoretical. Those are the distances at which my grandchildren and many others spend their afternoons and weekends.

2. Noise levels

The EIS predicts that night-time noise at the nearest homes will be sitting precisely on the NSW night-time residential limit. Therefore, there is zero margin for error in that predictive assessment. The plant and equipment figures that the noise consultants have relied on in their assessment are described in the report as “indicative.” This is very concerning. Without confirmation of the specifications of the actual design and scope of the plant and equipment, how can the community expect to have confidence in the reliability of the predicative noise assessments?

The World Health Organization has advised that even low levels of continuous noise can affect learning, attention and overall wellbeing in school aged children. These impacts are linked particularly to persistent background noise that interferes with rest and concentration.

It is unacceptable to risk even the slightest impact of ongoing operational noise (including low frequency noise), generator testing, emergency generator operation and cumulative noise impacts on the local children attending the school and living in the area.

The other concern is what happens when there is a power outage and the diesel generators get started. The EIS dismisses this scenario on the basis that blackouts are infrequent. With respect, infrequent is not the test that matters when a child is attending school to learn, playing in a backyard or sleeping when the diesel generators are tested or start up in an emergency power outage.

3. Air quality

In the same blackout scenario, the EIS predicts that the NSW 1-hour public-health limit for nitrogen dioxide (NO₂) will be exceeded at four nearby receivers.

Children are recognised as more sensitive to air pollution than adults because their lungs are still developing. Exposure to diesel emissions has been linked in public health research to increased asthma symptoms, respiratory irritation and reduced lung function in children.

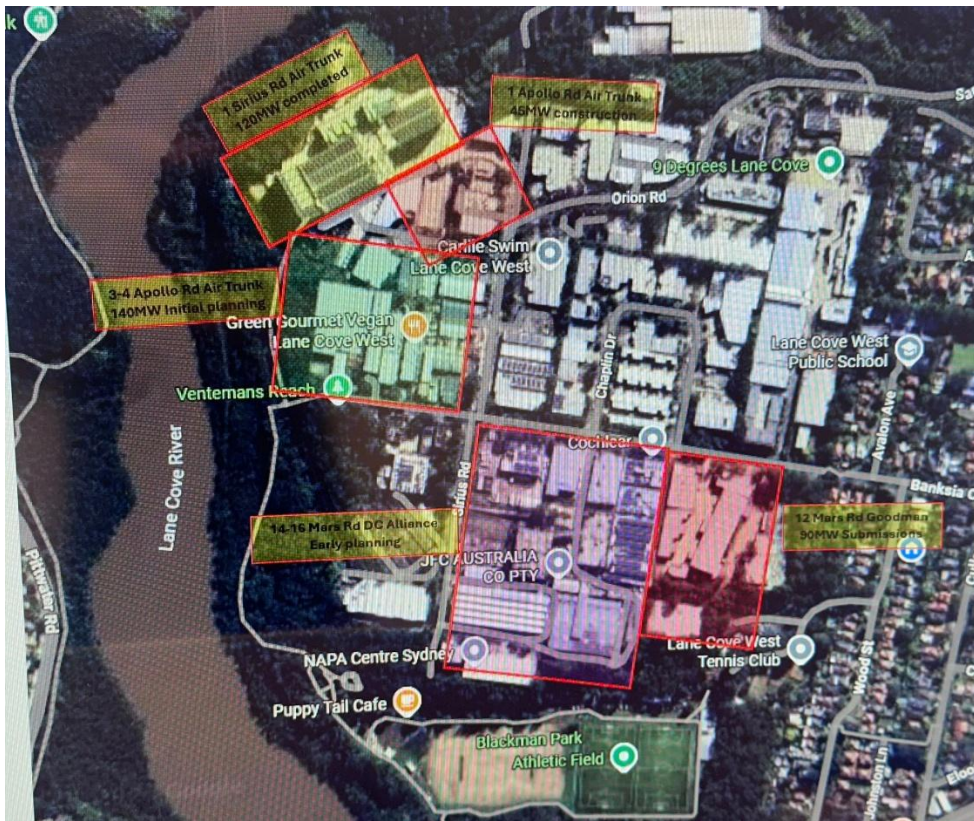
The facility utilises high voltage electrical equipment, stores diesel fuel, and incorporates nearly 200,000kg of lithium-ion batteries. Any one of these three utilities would be sufficient to pose considerable risk to the local community. All three in one place is a great concern, noting particularly how dangerous lithium-ion batteries are and that they can't be extinguished once alight.

I find it difficult to understand how the EIS reaches the conclusion that these factors are acceptable for such a significant facility in such proximity to a primary school and its local residents?

4. The cumulative impact of multiple data centres

The cumulative impacts of the Project Mars data centre in the context of the proposed cluster of other data centres all within a 500m radius is not adequately addressed in the EIS (refer to the aerial map in the following image). This cluster of enormous, 24 hour operating industrial facilities is being proposed adjacent to a quiet and sensitive residential, social and educational environment. The proposals are based on limited pre-construction predictions of noise and air quality with no regard for the cumulative impact of all facilities together. A regional power outage would start the diesel generators at all of these facilities at once. That cumulative scenario has not been modelled in the EIS.

Proposed cluster of data centres in Lane Cove West (including 12 Mars Road):



5. Construction period and disruption

The Lane Cove West Public School community and surrounding residents have long endured ongoing disruption for over a year with water main upgrades required to increase water supply to the business park to support data centres. These works involved significant traffic and parking disruption around Banksia Close and Wood Street and constantly changing intersection configurations around key pedestrian crossings used twice a day by the school children, their parents and carers as well as the teachers. These works posed genuine risk to children's safety as the regularly changing configurations caused confusion for motorists and pedestrians, especially at peak times of drop off and pick up.

The three-year construction program for the proposed data centre is going to be noisy and disruptive to the children attending the school during a time of utmost importance in their early stage of learning and development. Three years represents half of a child's primary school experience.

5. Closing

Allowing the proposed data centre at 12 Mars Road to proceed would be detrimental to the health and safety of the surrounding school children, residents and environment. This proposal should be rejected.