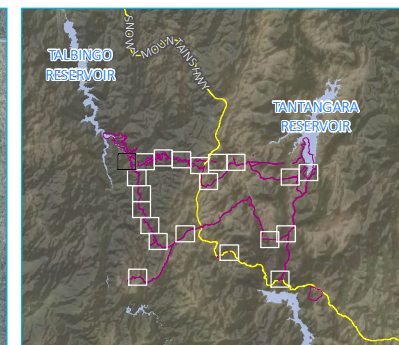
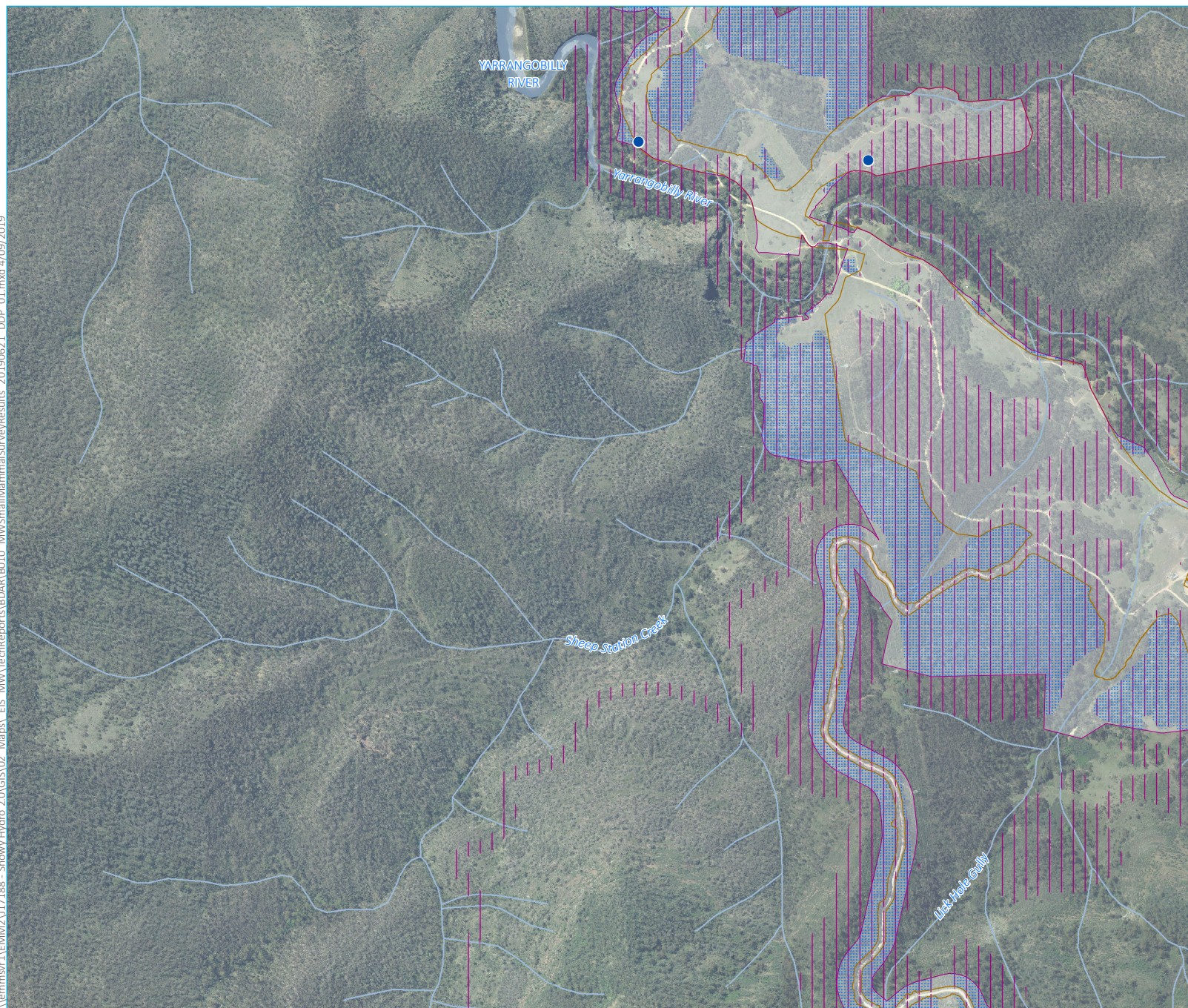


\\lemmsvr1\EMM2\17188 - Snowy Hydro 2.0\GIS\02 Maps\ EIS MW\TechReports\BOAR\B010 MW\SmallMammalSurveyResults_20190621 DDP_01.mxd 4/09/2019

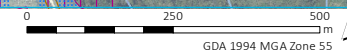


- KEY**
- Main Works disturbance footprint
 - Approved footprint
 - Waterbody
 - Watercourse / drainage line
 - Eastern Pygmy Possum species polygon
 - Eastern Pygmy-possum species habitat
 - Eastern Pygmy-possum (3)

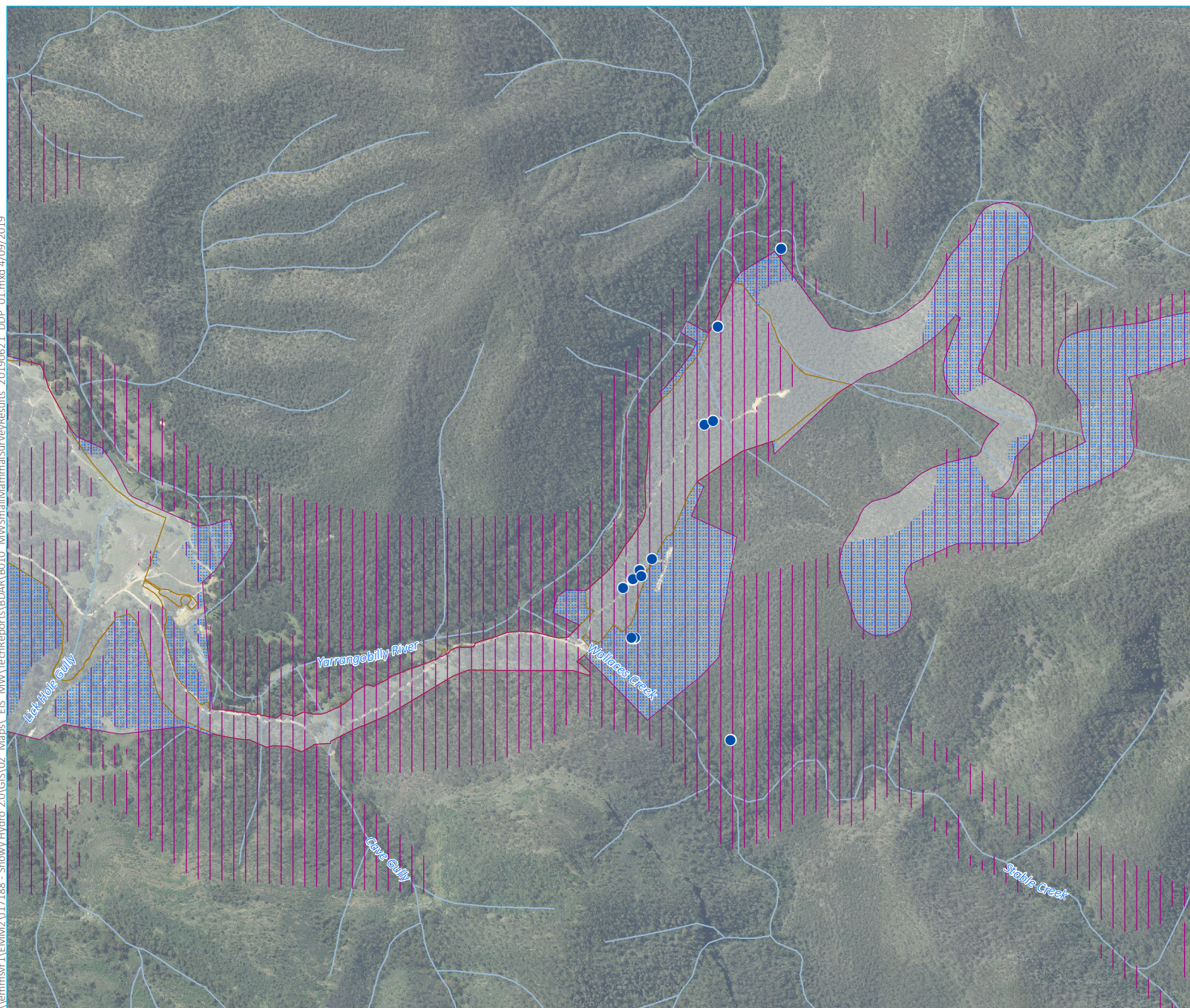
Small terrestrial mammal survey results

Snowy 2.0
Biodiversity Assessment Report
Main Works
Figure 6.7.2

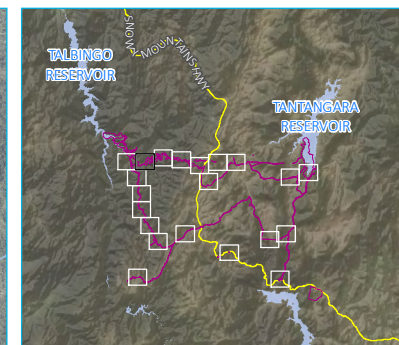
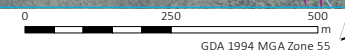
Source: EMM (2019); Snowy Hydro (2019); PhotoMapping (2018); SMEC (2018); DFSI (2017); GA (2015); LPMA (2011)



\\lemmsvr1\EMM2\17188 - Snowy Hydro 2.0\GIS\02 Maps\ EIS MM\TechReports\BOAR B010 MM\SmallMammalSurveyResults 20190621 DDP 01.mxd 4/09/2019



Source: EMM (2019); Snowy Hydro (2019); PhotoMapping (2018); SMEC (2018); DFSI (2017); GA (2015); LPMA (2011)



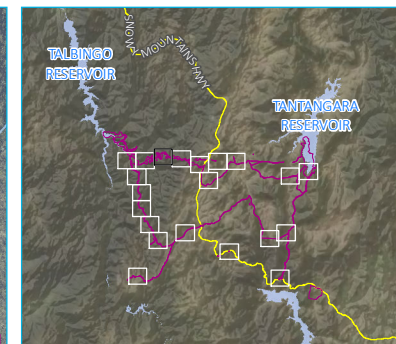
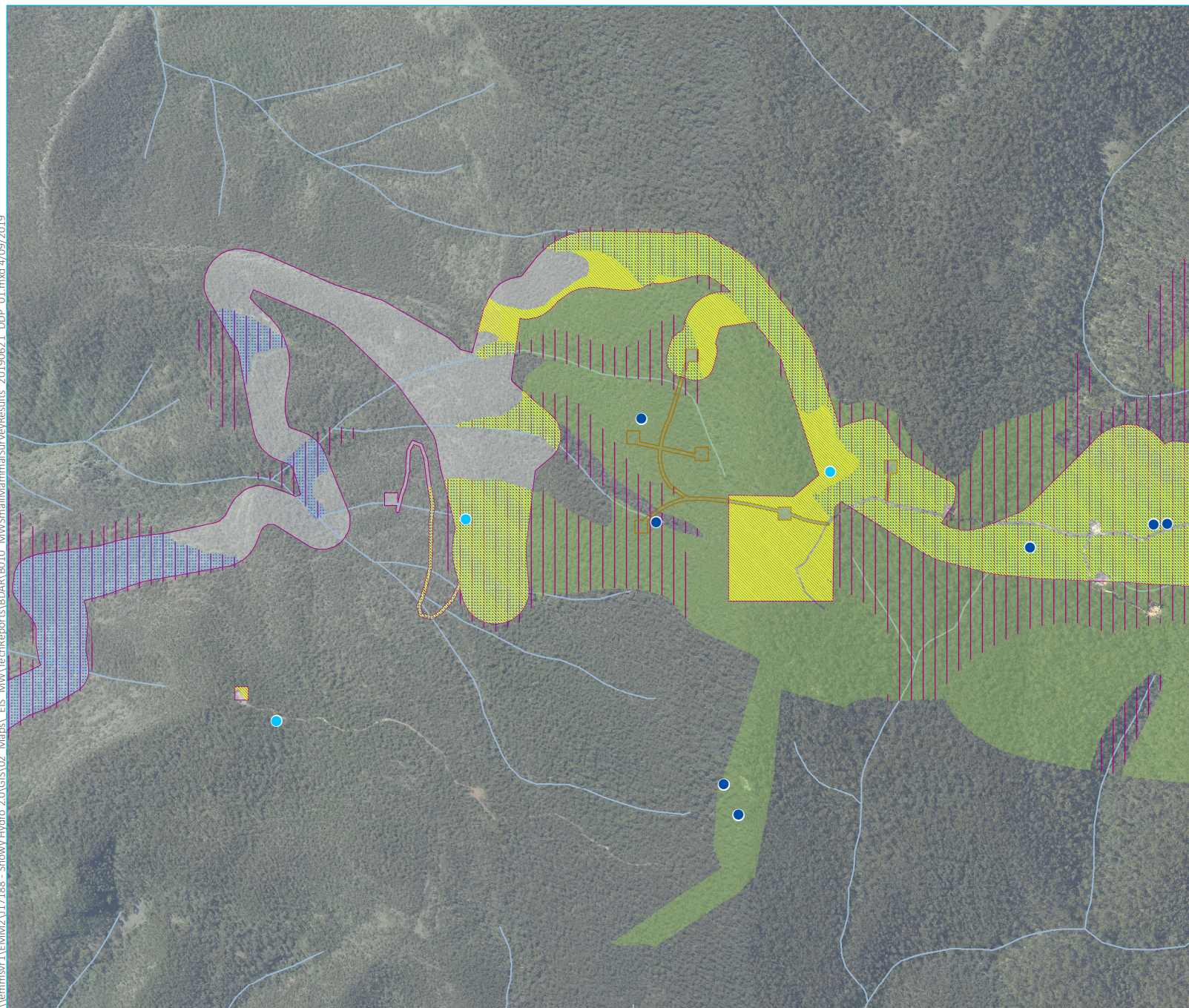
- KEY**
- Main Works disturbance footprint
 - Approved footprint
 - Watercourse / drainage line
 - Eastern Pygmy Possum species polygon
 - Eastern Pygmy-possum species habitat
 - Eastern Pygmy-possum (17)

Small terrestrial mammal survey results

Snowy 2.0
Biodiversity Assessment Report
Main Works
Figure 6.7.3



\\lemmsvr1\EMM2\17188 - Snowy Hydro 2.0\GIS\02 Maps\ EIS MW\TechReports\BOAR\B010 MW\SmallMammalSurveyResults_20190621 DDP_01.mxd 4/09/2019

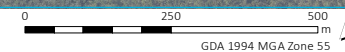


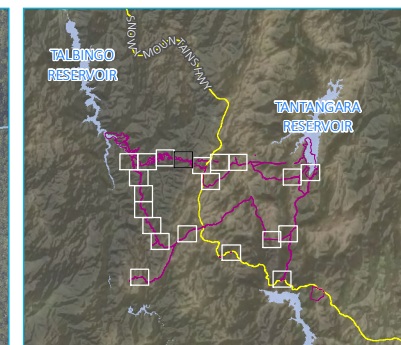
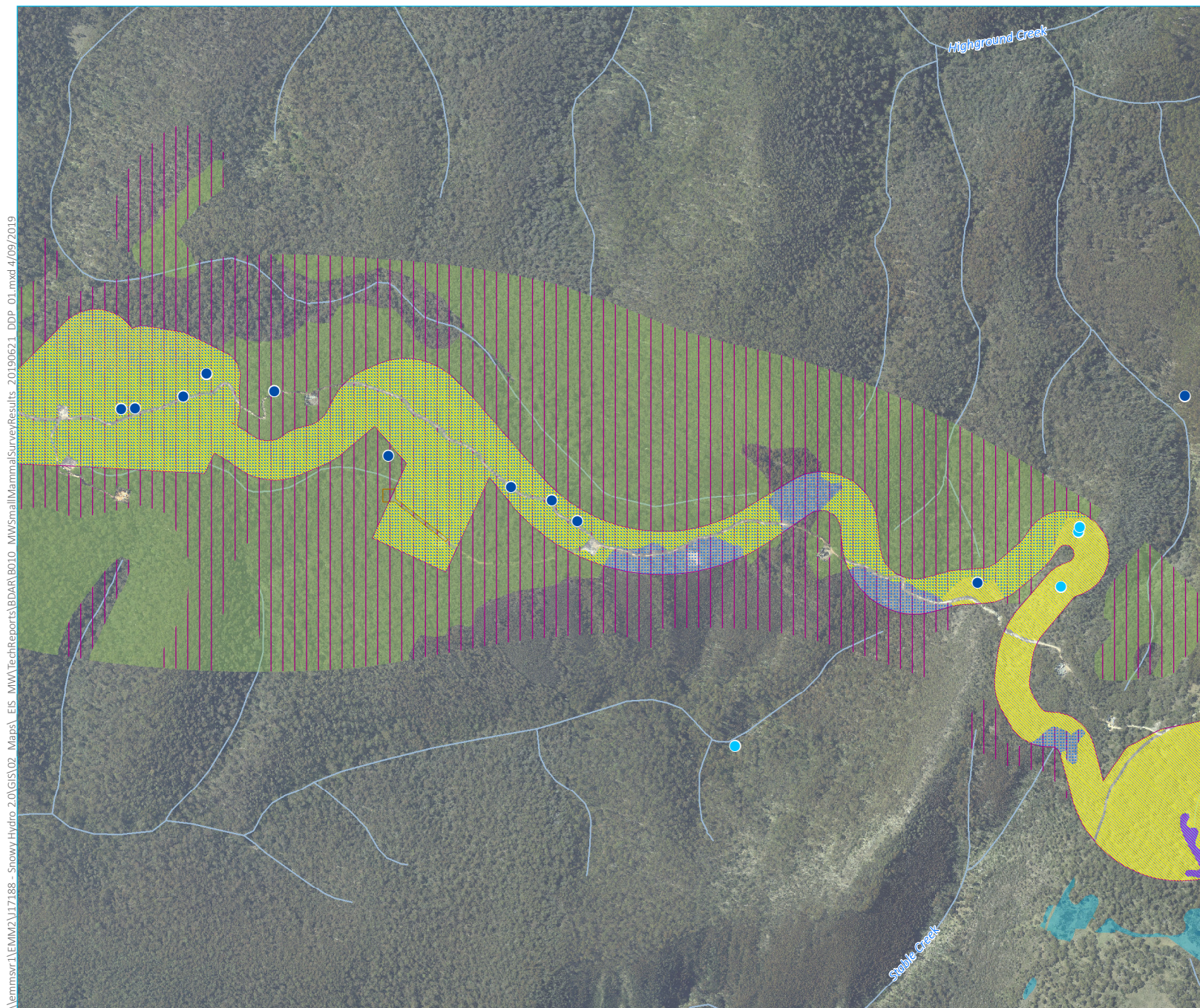
- KEY**
- Main Works disturbance footprint
 - Approved footprint
 - Watercourse / drainage line
 - Smoky Mouse species polygon
 - Eastern Pygmy Possum species polygon
 - Smoky mouse species habitat
 - Eastern Pygmy-possum species habitat
 - Eastern Pygmy-possum (11)
 - Smoky Mouse (3)

Small terrestrial mammal survey results

Snowy 2.0
Biodiversity Assessment Report
Main Works
Figure 6.7.4

Source: EMM (2019); Snowy Hydro (2019); PhotoMapping (2018); SMEC (2018); DFSI (2017); GA (2015); LPMA (2011)



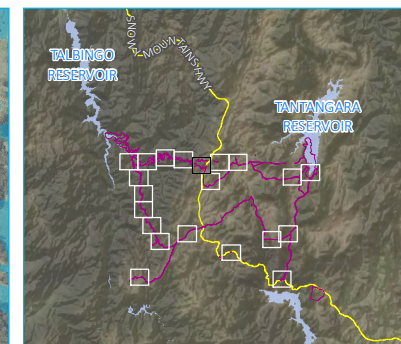
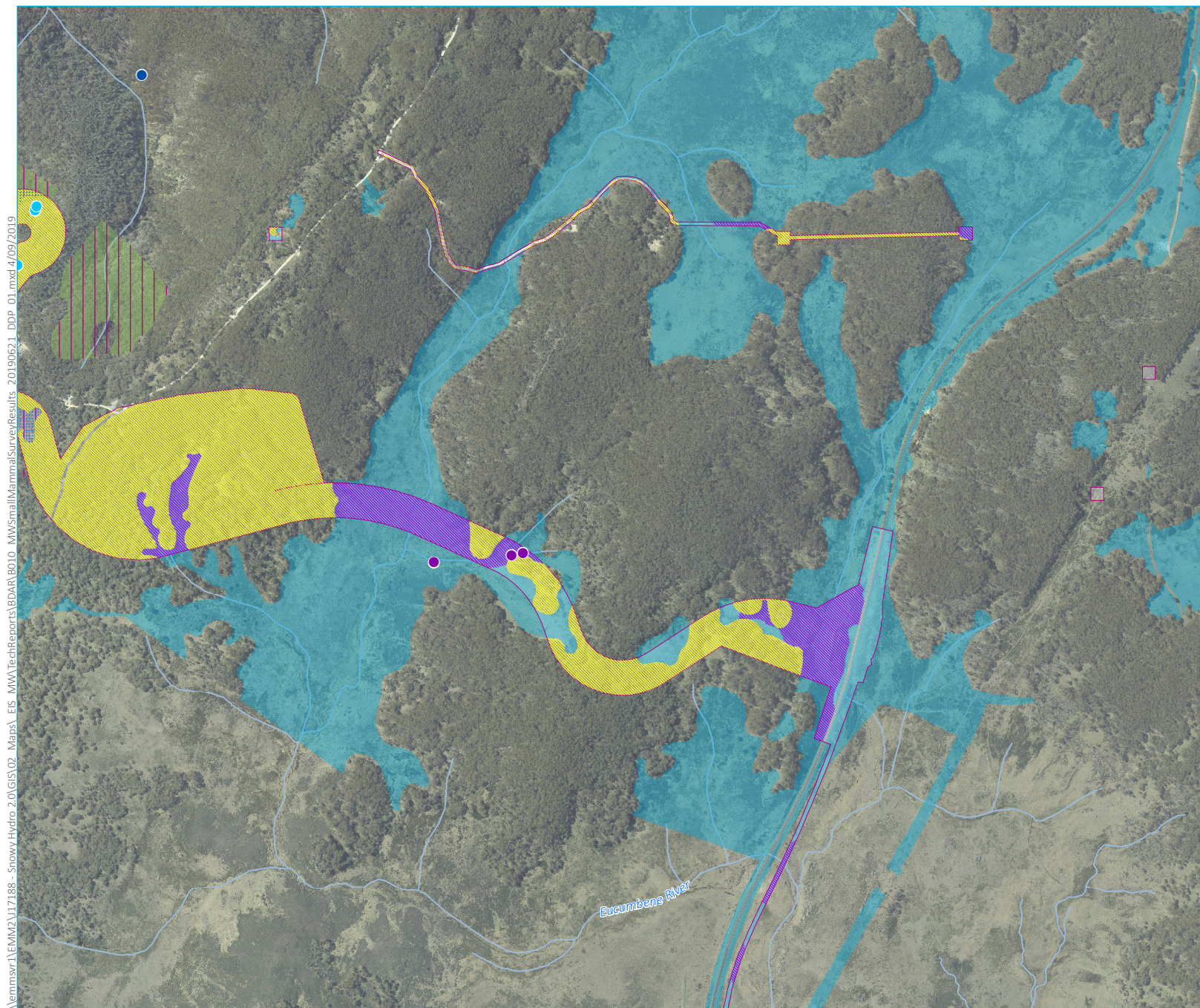


- KEY**
- Main Works disturbance footprint
 - Approved footprint
 - Watercourse / drainage line
 - Smoky Mouse species polygon
 - Broad-toothed Rat species polygon
 - Eastern Pygmy Possum species polygon
 - Smoky mouse species habitat
 - Broad-toothed Rat species habitat
 - Eastern Pygmy-possum species habitat
 - Eastern Pygmy-possum (15)
 - Smoky Mouse (4)

Small terrestrial mammal survey results

Snowy 2.0
Biodiversity Assessment Report
Main Works
Figure 6.7.5





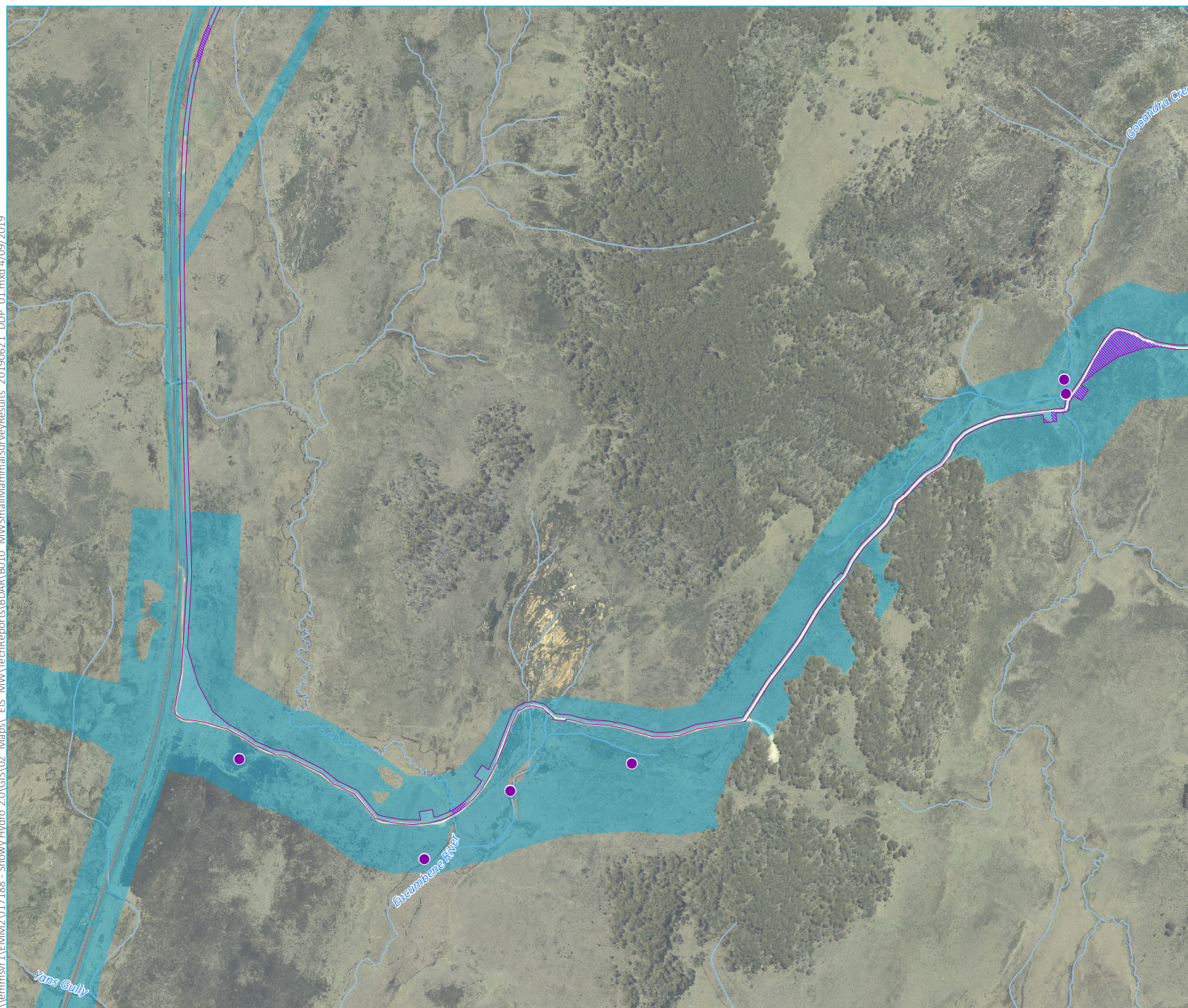
- KEY**
- Main Works disturbance footprint
 - Watercourse / drainage line
 - Smoky Mouse species polygon
 - Broad-toothed Rat species polygon
 - Eastern Pygmy Possum species polygon
 - Smoky mouse species habitat
 - Broad-toothed Rat species habitat
 - Eastern Pygmy-possum species habitat
 - Broad-toothed Rat (3)
 - Eastern Pygmy-possum (1)
 - Smoky Mouse (3)

Small terrestrial mammal survey results

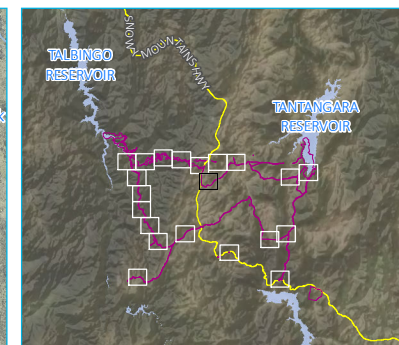
Snowy 2.0
Biodiversity Assessment Report
Main Works
Figure 6.7.6



\\lemmsvr1\EMM2\17188 - Snowy Hydro 2.0\GIS\02 Maps\ EIS MW\TechReports\BOAR\B010 MW\SmallMammalSurveyResults_20190621 DDP_01.mxd 4/09/2019



Source: EMM (2019); Snowy Hydro (2019); PhotoMapping (2018); SMEC (2018); DFSI (2017); GA (2015); LPMA (2011)



KEY

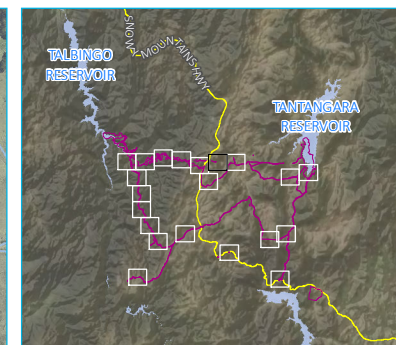
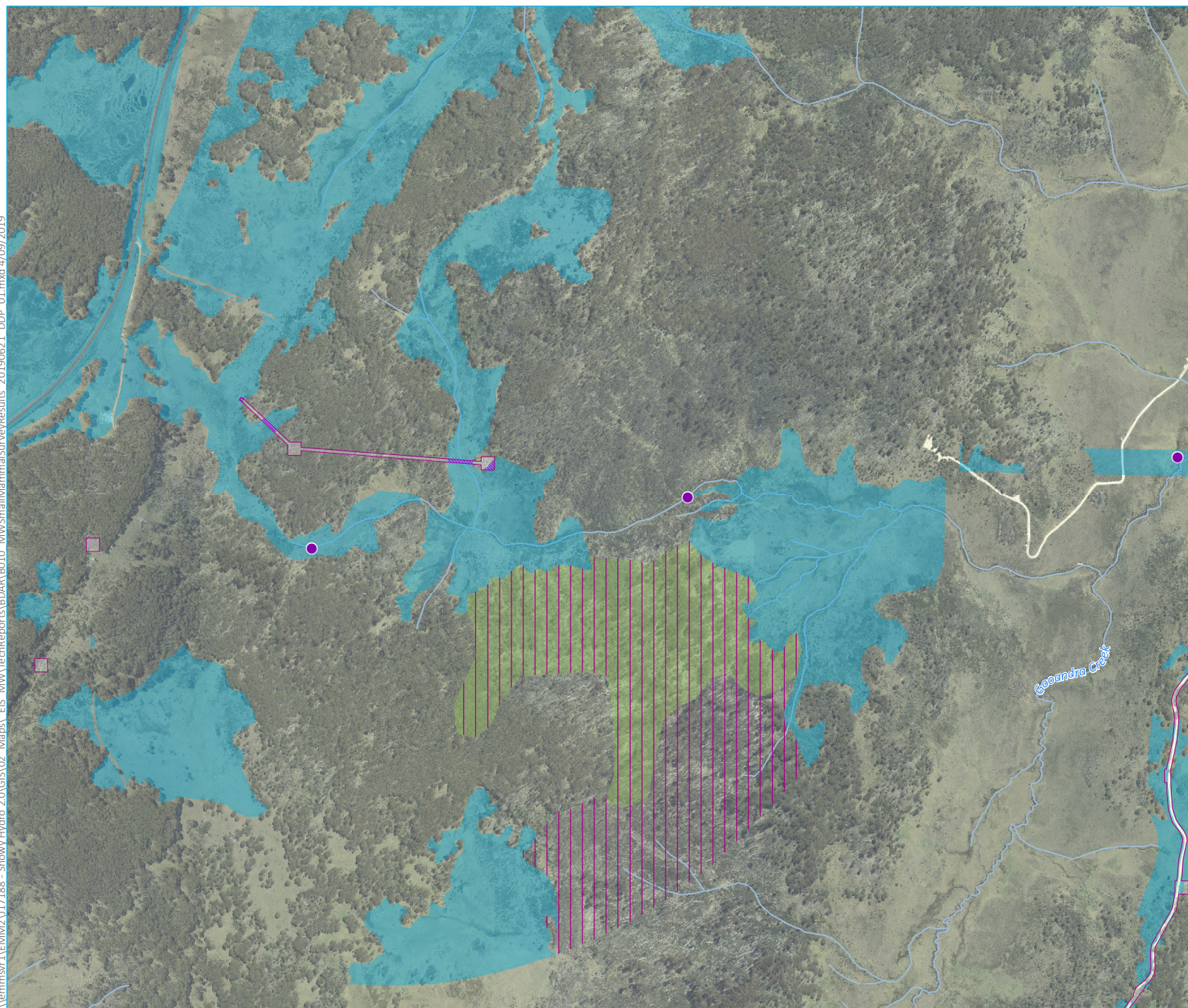
- Main Works disturbance footprint
- Watercourse / drainage line
- Broad-toothed Rat species polygon
- Broad-toothed Rat species habitat
- Broad-toothed Rat (6)

Small terrestrial mammal survey results

Snowy 2.0
Biodiversity Assessment Report
Main Works
Figure 6.7.7



\\lemmsvr1\EMM2\17188 - Snowy Hydro 2.0\GIS\02 Maps\ EIS MW\TechReports\BOAR\B010 MW\SmallMammalSurveyResults_20190621 DDP_01.mxd 4/09/2019



- KEY**
- Main Works disturbance footprint
 - Watercourse / drainage line
 - Broad-toothed Rat species polygon
 - Smoky mouse species habitat
 - Broad-toothed Rat species habitat
 - Eastern Pygmy-possum species habitat
 - Broad-toothed Rat (4)

Small terrestrial mammal survey results

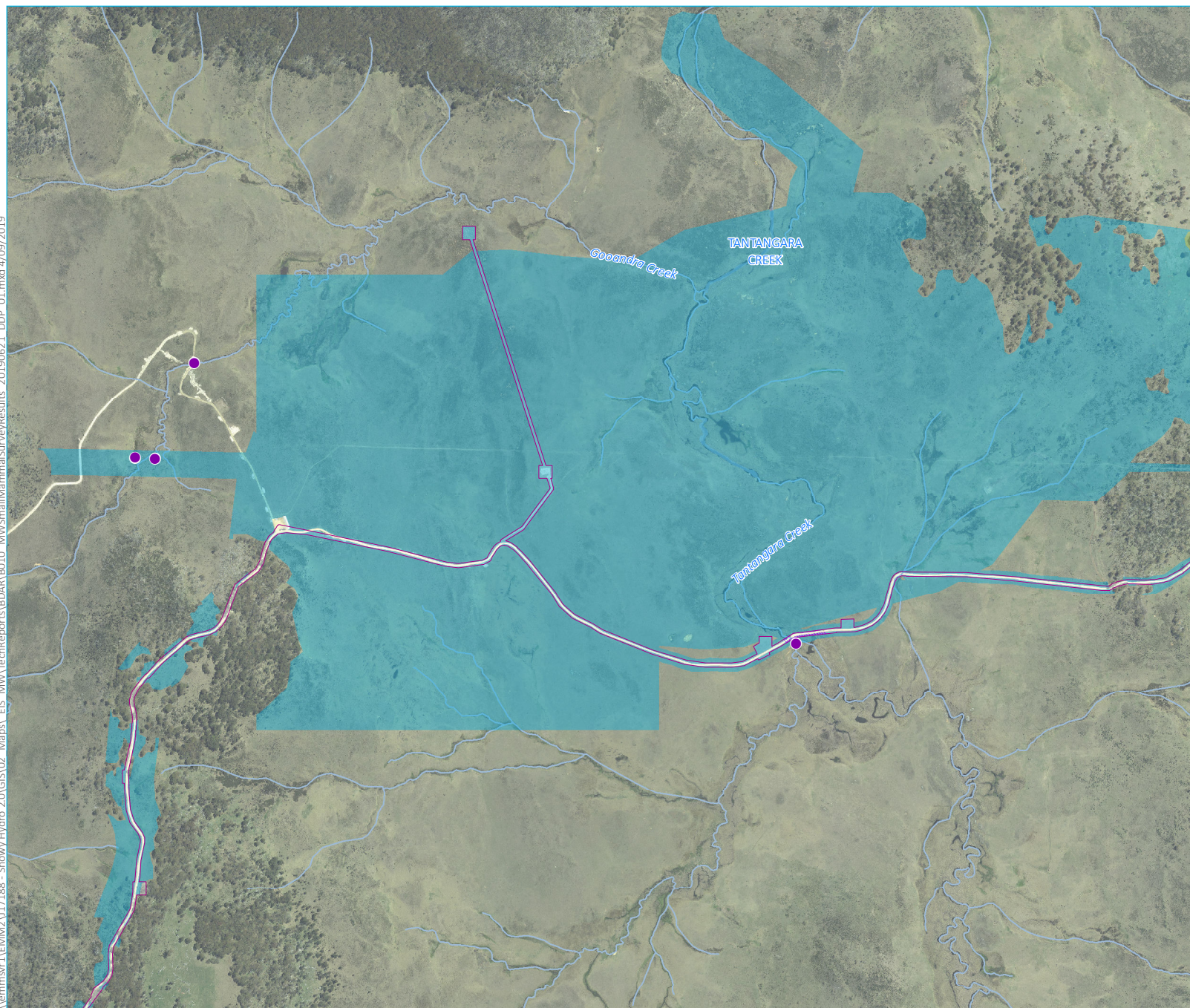
Snowy 2.0
Biodiversity Assessment Report
Main Works
Figure 6.7.8

Source: EMM (2019); Snowy Hydro (2019); PhotoMapping (2018); SMEC (2018); DFSI (2017); GA (2015); LPMA (2011)

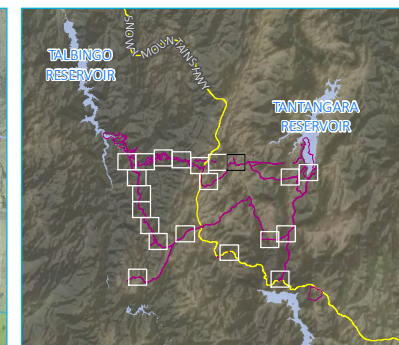
0 250 500
m
GDA 1994 MGA Zone 55



\\lemmsvr1\EMM2\17188 - Snowy Hydro 2.0\GIS\02 Maps\ EIS MW\TechReports\BOAR\B010 MW\SmallMammalSurveyResults_20190621 DDP_01.mxd 4/09/2019



Source: EMM (2019); Snowy Hydro (2019); PhotoMapping (2018); SMEC (2018); DFSI (2017); GA (2015); LPMA (2011)



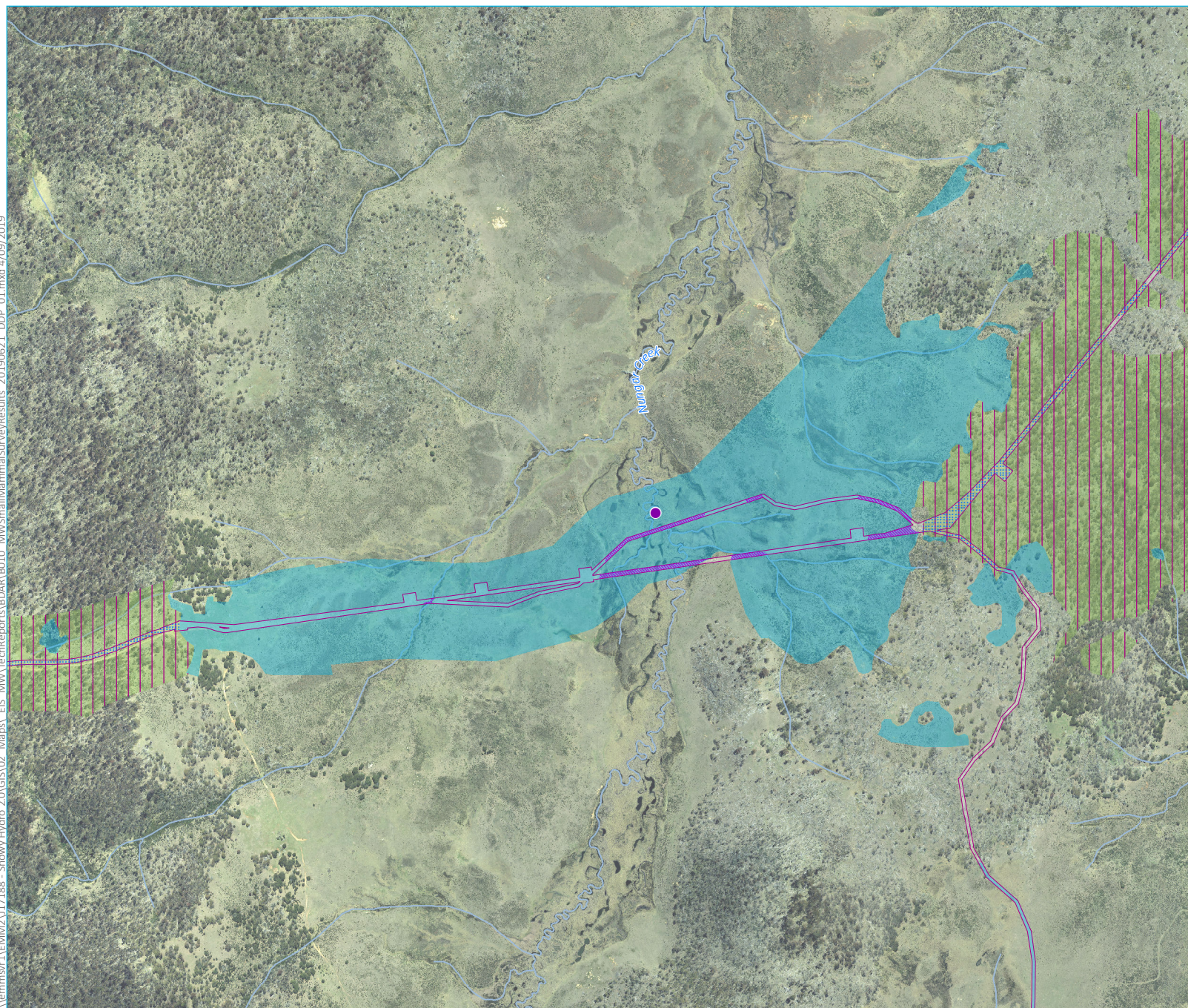
- KEY**
- Main Works disturbance footprint
 - Waterbody
 - Watercourse / drainage line
 - Broad-toothed Rat species polygon
 - Smoky mouse species habitat
 - Broad-toothed Rat species habitat
 - Eastern Pygmy-possum species habitat
 - Broad-toothed Rat (4)

Small terrestrial mammal survey results

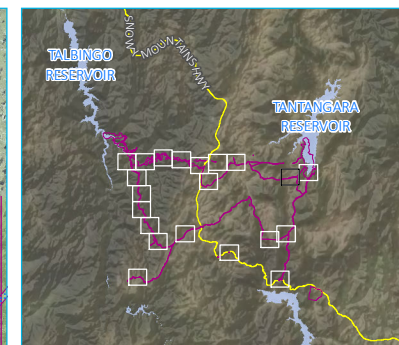
Snowy 2.0
Biodiversity Assessment Report
Main Works
Figure 6.7.9



\\lemmsvr1\EMM2\17188 - Snowy Hydro 2.0\GIS\02 Maps\ EIS MW\TechReports\BOAR\B010 MW\SmallMammalSurveyResults_20190621 DDP_01.mxd 4/09/2019



Source: EMM (2019); Snowy Hydro (2019); PhotoMapping (2018); SMEC (2018); DFSI (2017); GA (2015); LPMA (2011)



KEY

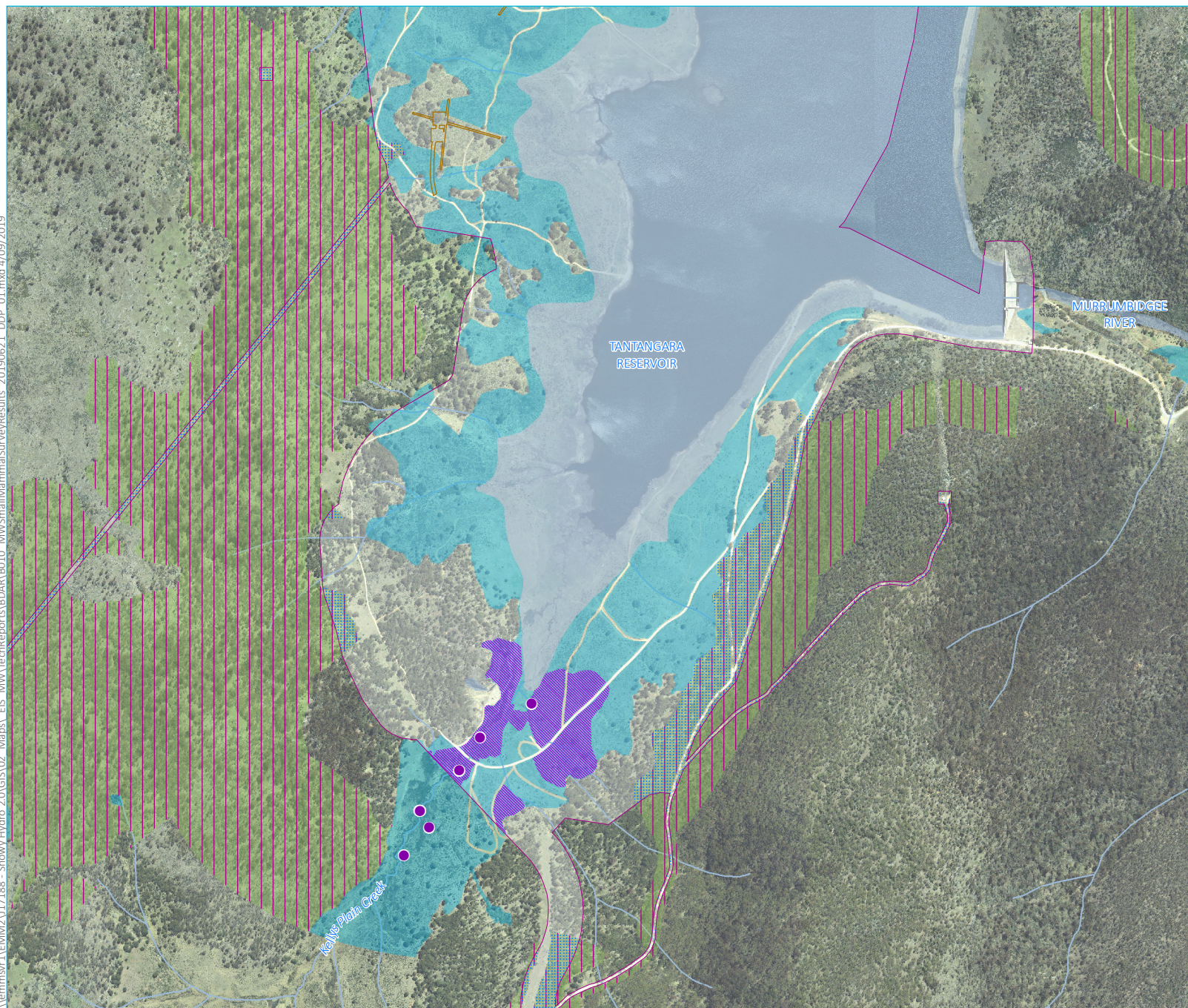
- Main Works disturbance footprint
- Watercourse / drainage line
- Broad-toothed Rat species polygon
- Eastern Pygmy Possum species polygon
- Smoky mouse species habitat
- Broad-toothed Rat species habitat
- Eastern Pygmy-possum species habitat
- Broad-toothed Rat (1)

Small terrestrial mammal survey results

Snowy 2.0
Biodiversity Assessment Report
Main Works
Figure 6.7.10

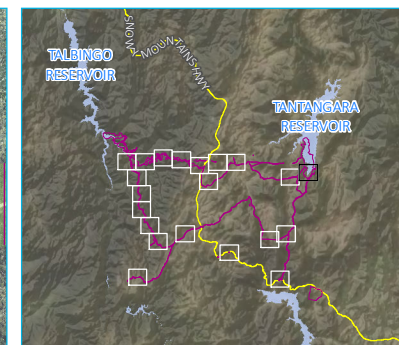


\\lemmsvr1\EMM2\17188 - Snowy Hydro 2.0\GIS\02 Maps\ EIS MW\TechReports\BDAR\B010 MW\SmallMammalSurveyResults_20190621 DDP_01.mxd 4/09/2019



Source: EMM (2019); Snowy Hydro (2019); PhotoMapping (2018); SMEC (2018); DFSI (2017); GA (2015); LPMA (2011)

0 250 500
m
GDA 1994 MGA Zone 55



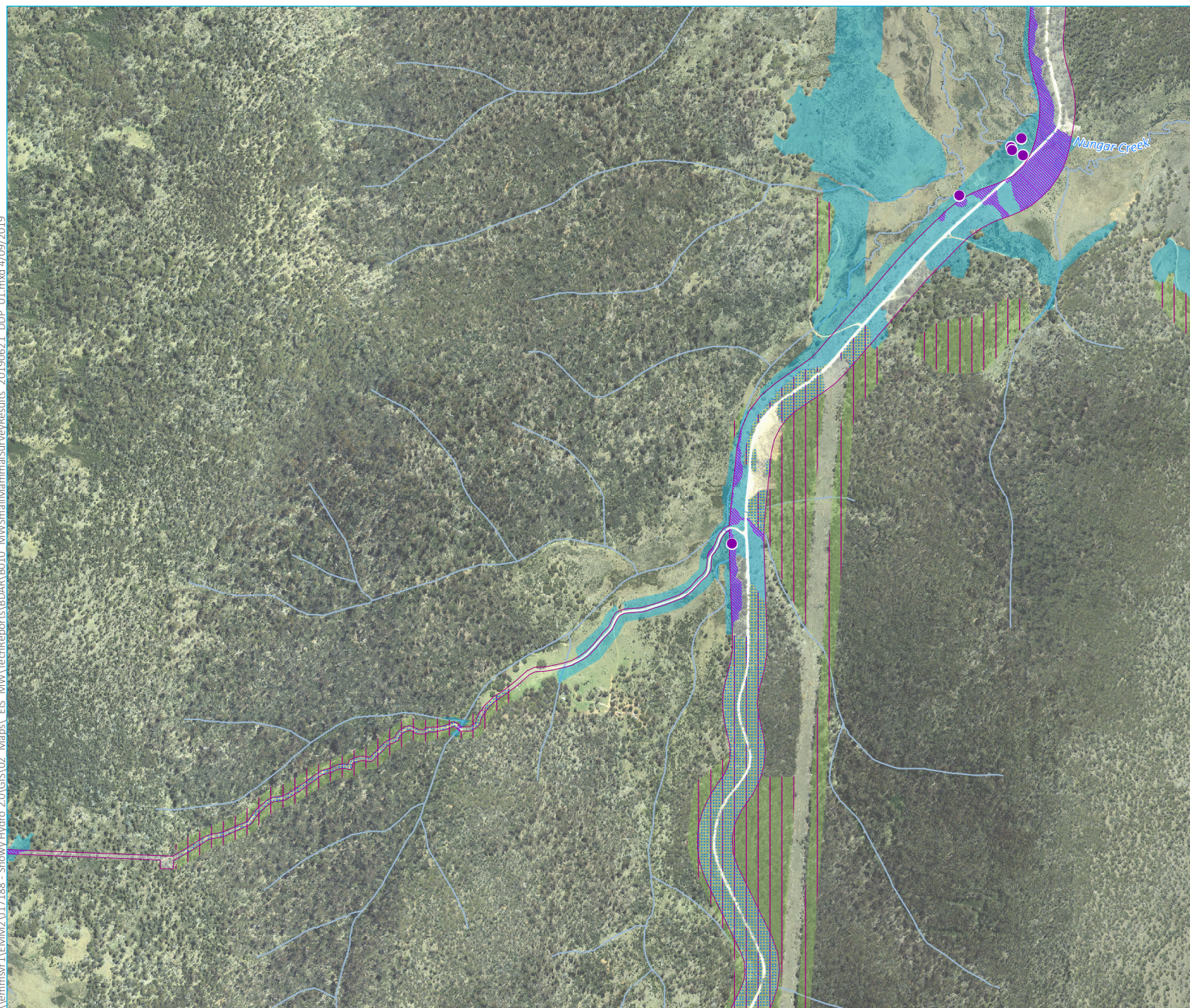
- KEY**
- Main Works disturbance footprint
 - Approved footprint
 - Waterbody
 - Watercourse / drainage line
 - Broad-toothed Rat species polygon
 - Eastern Pygmy Possum species polygon
 - Smoky mouse species habitat
 - Broad-toothed Rat species habitat
 - Eastern Pygmy-possum species habitat
 - Broad-toothed Rat (9)

Small terrestrial mammal survey results

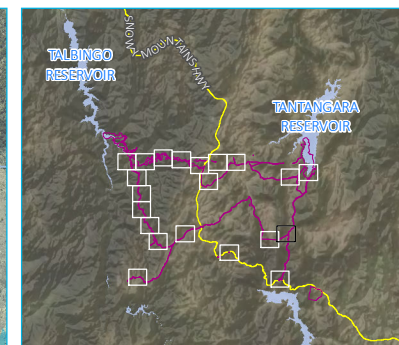
Snowy 2.0
Biodiversity Assessment Report
Main Works
Figure 6.7.11



\\lemmsvr1\EMM2\17188 - Snowy Hydro 2.0\GIS\02 Maps\ EIS MW\TechReports\BOAR\B010 MW\SmallMammalSurveyResults_20190621 DDP_01.mxd 4/09/2019



Source: EMM (2019); Snowy Hydro (2019); PhotoMapping (2018); SMEC (2018); DFSI (2017); GA (2015); LPMA (2011)



- KEY**
- Main Works disturbance footprint
 - Watercourse / drainage line
 - Broad-toothed Rat species polygon
 - Eastern Pygmy Possum species polygon
 - Smoky mouse species habitat
 - Broad-toothed Rat species habitat
 - Eastern Pygmy-possum species habitat
 - Broad-toothed Rat (6)

Small terrestrial mammal survey results

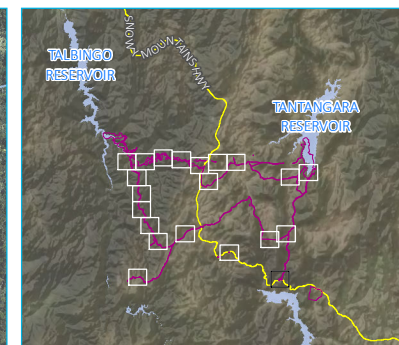
Snowy 2.0
Biodiversity Assessment Report
Main Works
Figure 6.7.12



\\lemmsvr1\EMM2\17188 - Snowy Hydro 2.0\GIS\02 Maps\ EIS MW\TechReports\BOAR\B010 MW\SmallMammalSurveyResults_20190621 DDP_01.mxd 4/09/2019



Source: EMM (2019); Snowy Hydro (2019); PhotoMapping (2018); SMEC (2018); DFSI (2017); GA (2015); LPMA (2011)



KEY

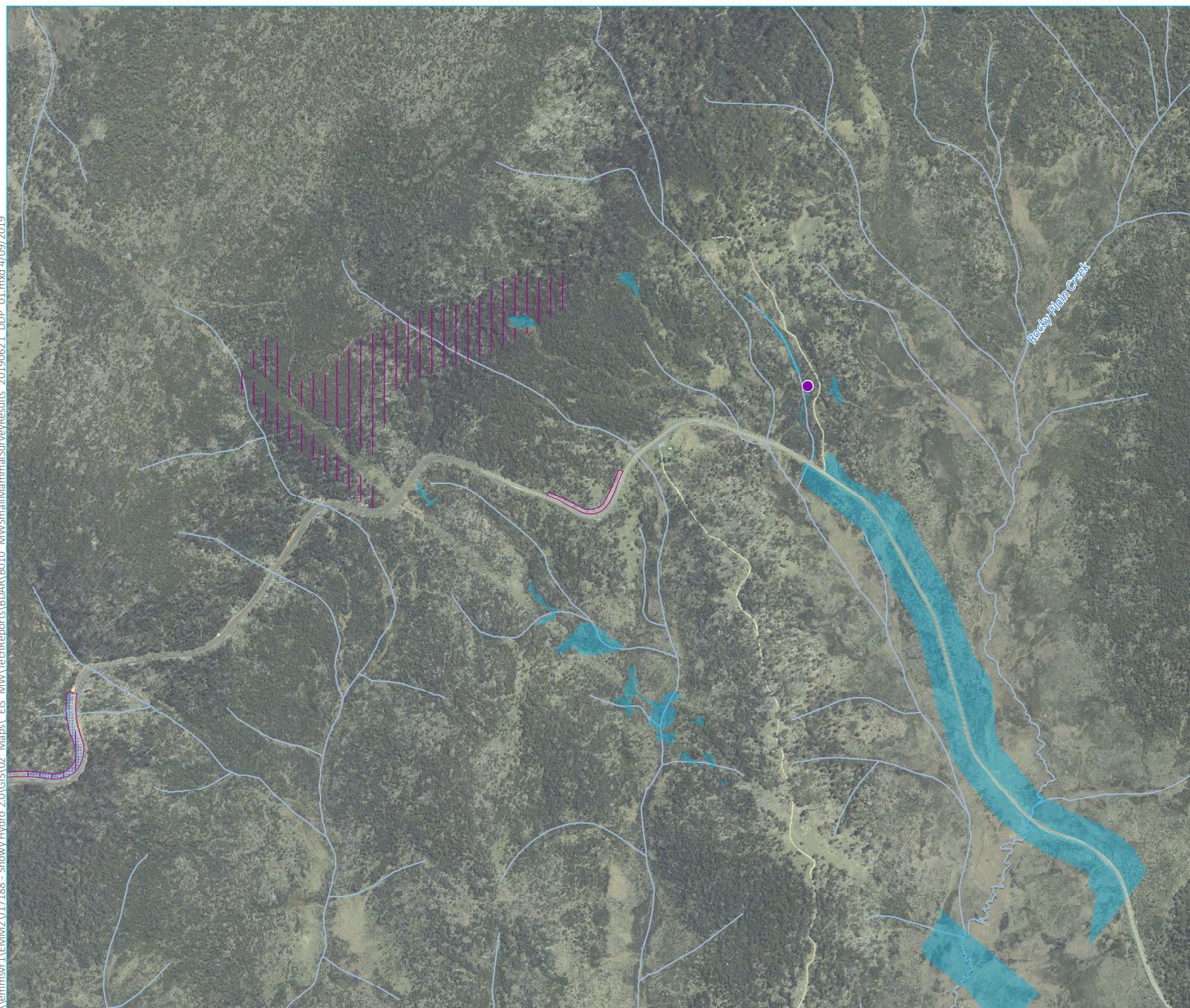
- Main Works disturbance footprint
- Watercourse / drainage line
- Eastern Pygmy Possum species polygon
- Smoky mouse species habitat
- Broad-toothed Rat species habitat
- Eastern Pygmy-possum species habitat
- Broad-toothed Rat (1)

Small terrestrial mammal survey results

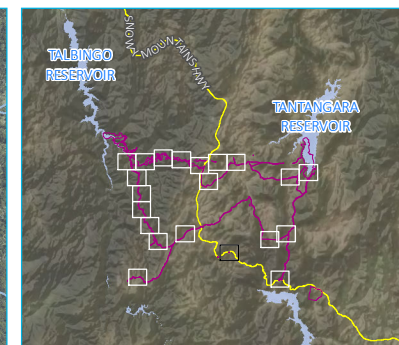
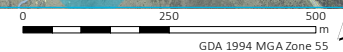
Snowy 2.0
Biodiversity Assessment Report
Main Works
Figure 6.7.14



\\lemmsvr1\EMM2\17188 - Snowy Hydro 2.0\GIS\02 Maps\ EIS MW\TechReports\BOAR\B010 MW\SmallMammalSurveyResults_20190621 DDP_01.mxd 4/09/2019



Source: EMM (2019); Snowy Hydro (2019); PhotoMapping (2018); SMEC (2018); DFSI (2017); GA (2015); LPMA (2011)



KEY

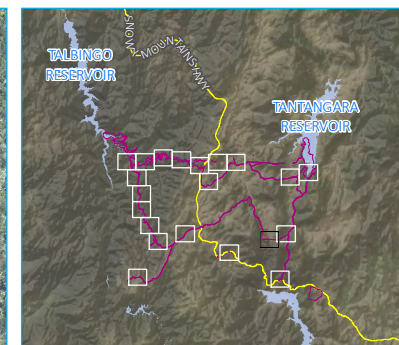
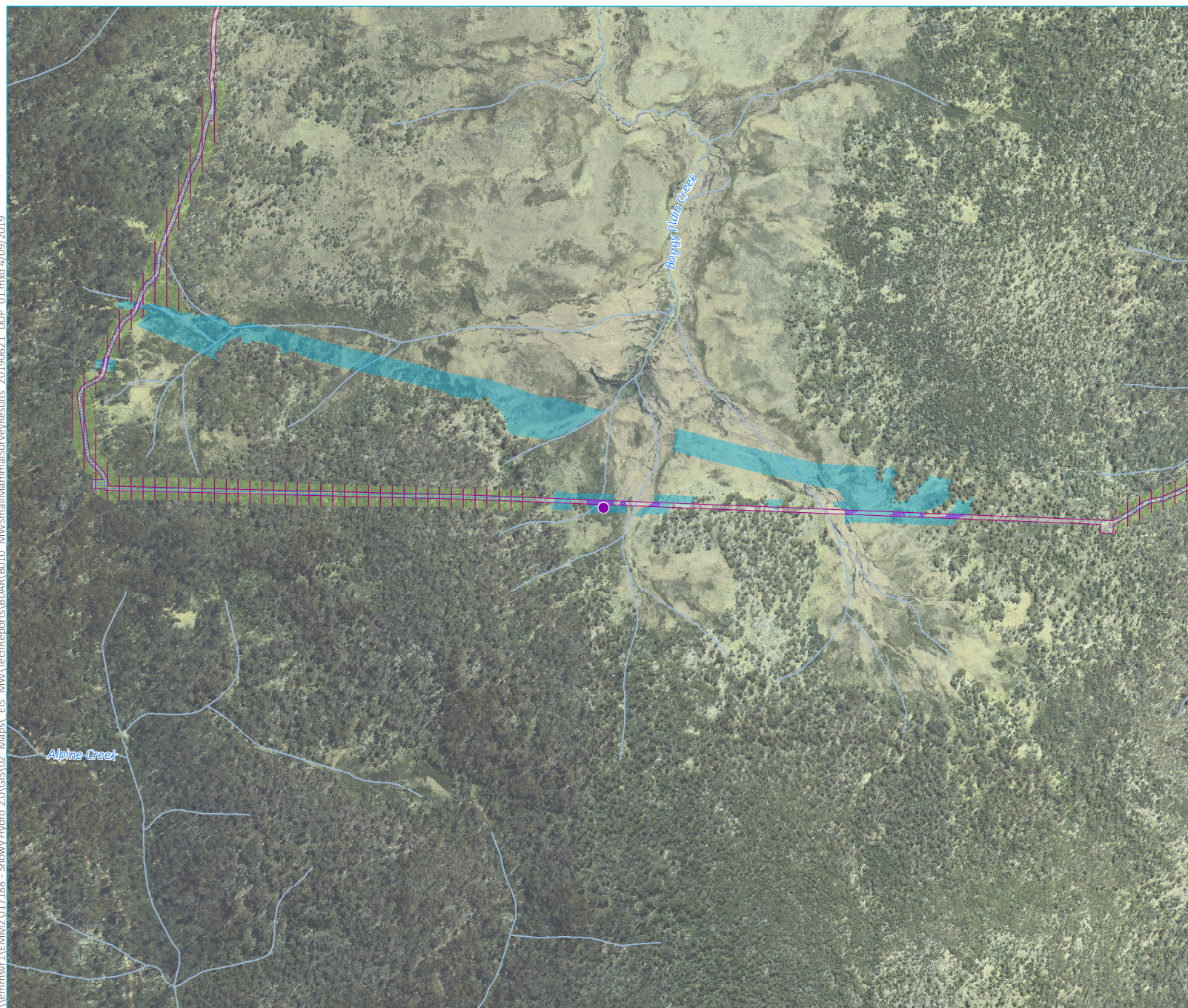
- Main Works disturbance footprint
- Watercourse / drainage line
- Eastern Pygmy Possum species polygon
- Broad-toothed Rat species habitat
- Eastern Pygmy-possum species habitat
- Broad-toothed Rat (1)

Small terrestrial mammal survey results

Snowy 2.0
Biodiversity Assessment Report
Main Works
Figure 6.7.15



\\lemmsvr1\EMM2\17188 - Snowy Hydro 2.0\GIS\02 Maps\ EIS MW\TechReports\BOAR\B010 MW\SmallMammalSurveyResults_20190621 DDP_01.mxd 4/09/2019

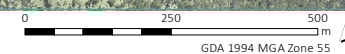


- KEY**
- Main Works disturbance footprint
 - Waterbody
 - Watercourse / drainage line
 - Broad-toothed Rat species polygon
 - Eastern Pygmy Possum species polygon
 - Smoky mouse species habitat
 - Broad-toothed Rat species habitat
 - Eastern Pygmy-possum species habitat
 - Broad-toothed Rat (1)

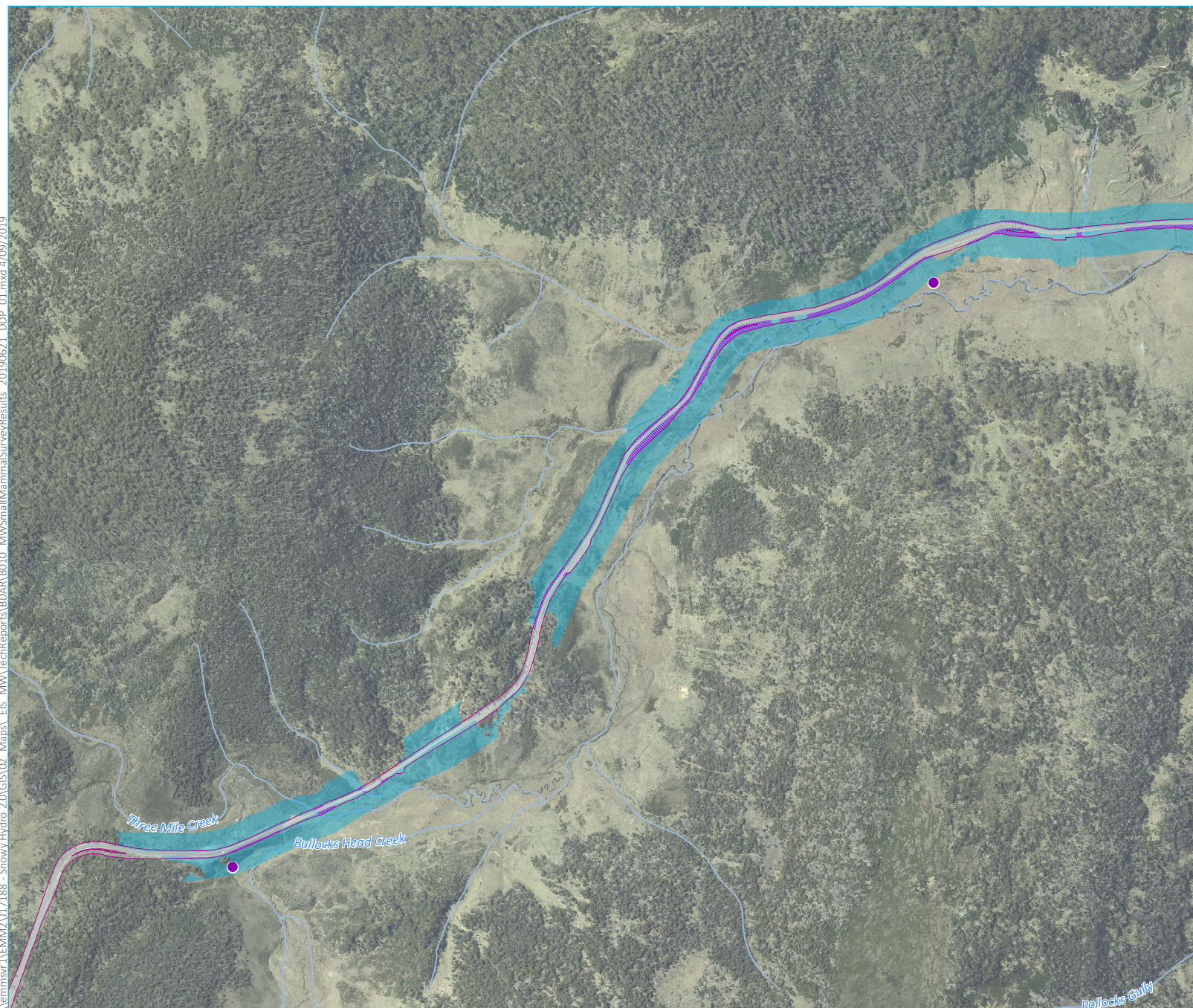
Small terrestrial mammal survey results

Snowy 2.0
Biodiversity Assessment Report
Main Works
Figure 6.7.13

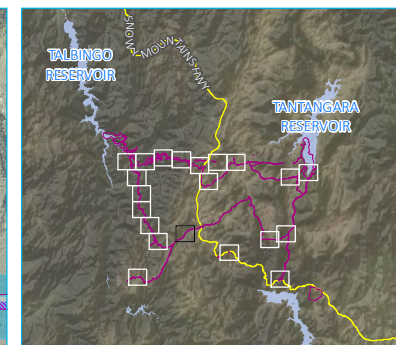
Source: EMM (2019); Snowy Hydro (2019); PhotoMapping (2018); SMEC (2018); DFSI (2017); GA (2015); LPMA (2011)



\\lemmsvr1\EMM2\17188 - Snowy Hydro 2.0\GIS\02 Maps\ EIS MW\TechReports\BOAR\B010 MW\SmallMammalSurveyResults_20190621_DDP_01.mxd 4/09/2019



Source: EMM (2019); Snowy Hydro (2019); PhotoMapping (2018); SMEC (2018); DFSI (2017); GA (2015); LPMA (2011)



KEY

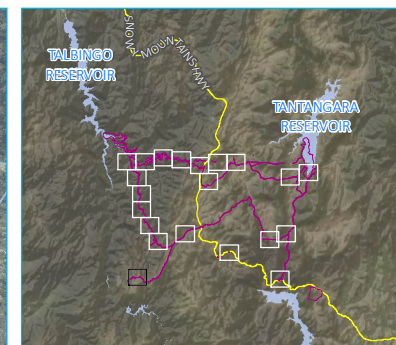
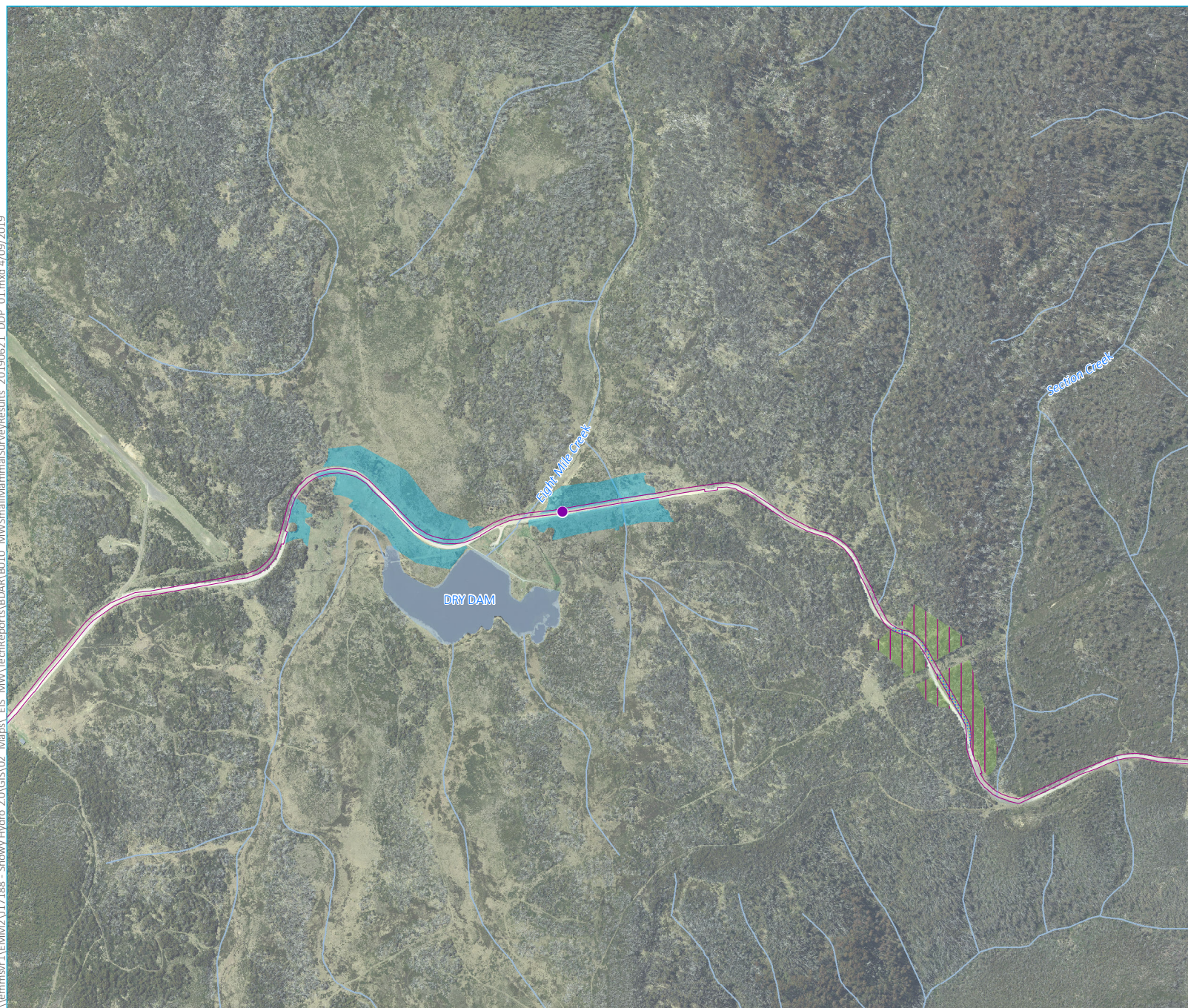
- Main Works disturbance footprint
- Watercourse / drainage line
- Broad-toothed Rat species polygon
- Broad-toothed Rat species habitat
- Broad-toothed Rat (2)

Small terrestrial mammal survey results

Snowy 2.0
Biodiversity Assessment Report
Main Works
Figure 6.7.16



\\lemmsvr1\EMM2\17188 - Snowy Hydro 2.0\GIS\02 Maps\ EIS MW\TechReports\BOAR\B010 MW\SmallMammalSurveyResults_20190621_DDP_01.mxd 4/09/2019

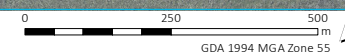


- KEY**
- Main Works disturbance footprint
 - Waterbody
 - Watercourse / drainage line
 - Eastern Pygmy Possum species polygon
 - Smoky mouse species habitat
 - Broad-toothed Rat species habitat
 - Eastern Pygmy-possum species habitat
 - Broad-toothed Rat (1)

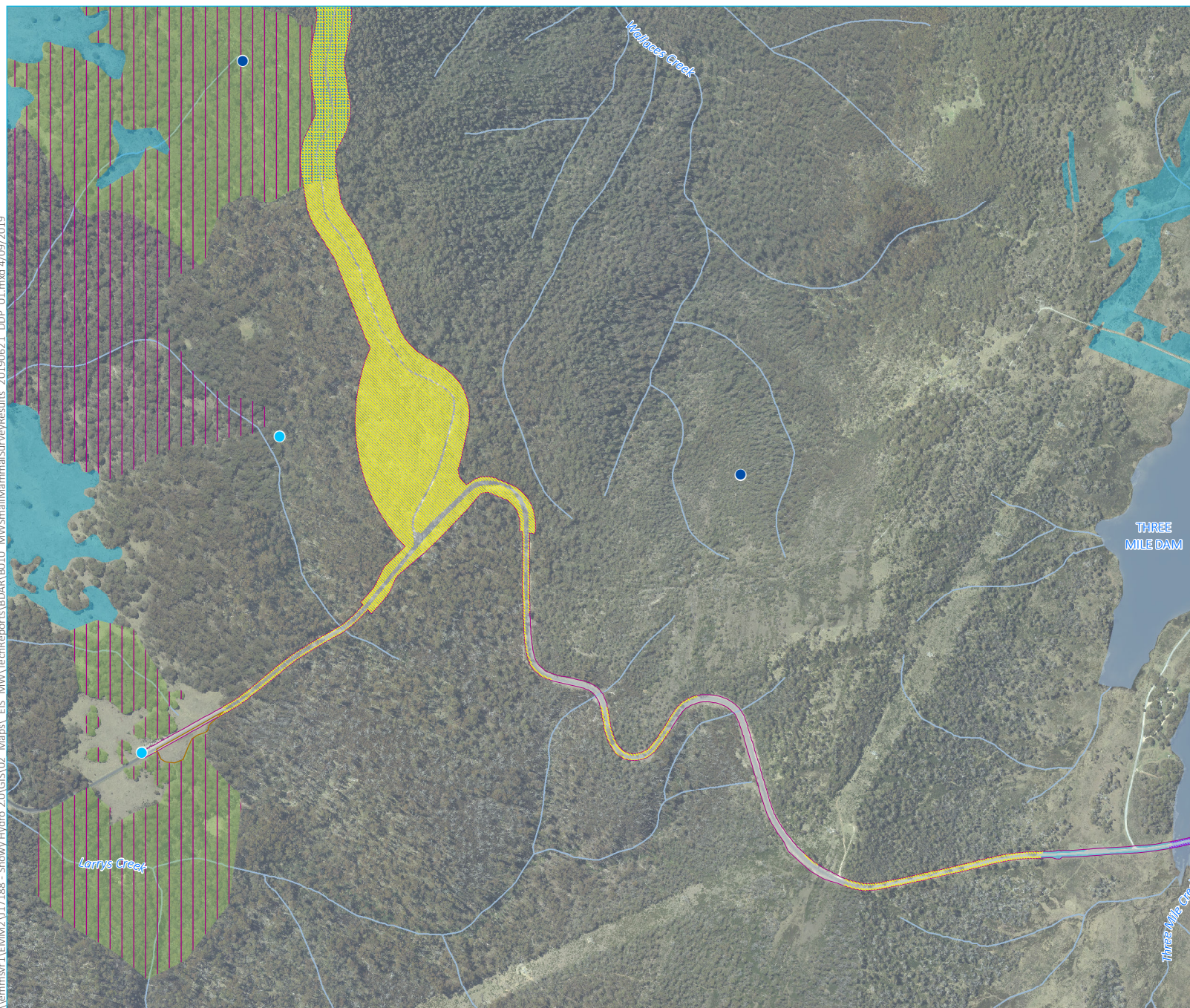
Small terrestrial mammal survey results

Snowy 2.0
Biodiversity Assessment Report
Main Works
Figure 6.7.17

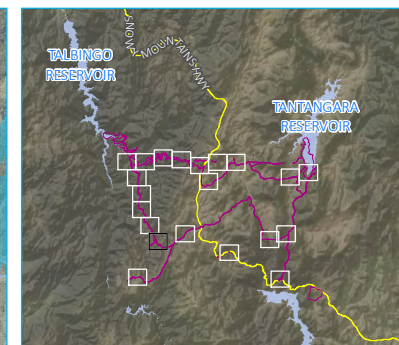
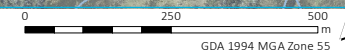
Source: EMM (2019); Snowy Hydro (2019); PhotoMapping (2018); SMEC (2018); DFSI (2017); GA (2015); LPMA (2011)



\\lemmsvr1\EMM2\17188 - Snowy Hydro 2.0\GIS\02 Maps\ EIS MW\TechReports\BOAR\B010 MW\SmallMammalSurveyResults_20190621 DDP_01.mxd 4/09/2019



Source: EMM (2019); Snowy Hydro (2019); PhotoMapping (2018); SMEC (2018); DFSI (2017); GA (2015); LPMA (2011)



KEY

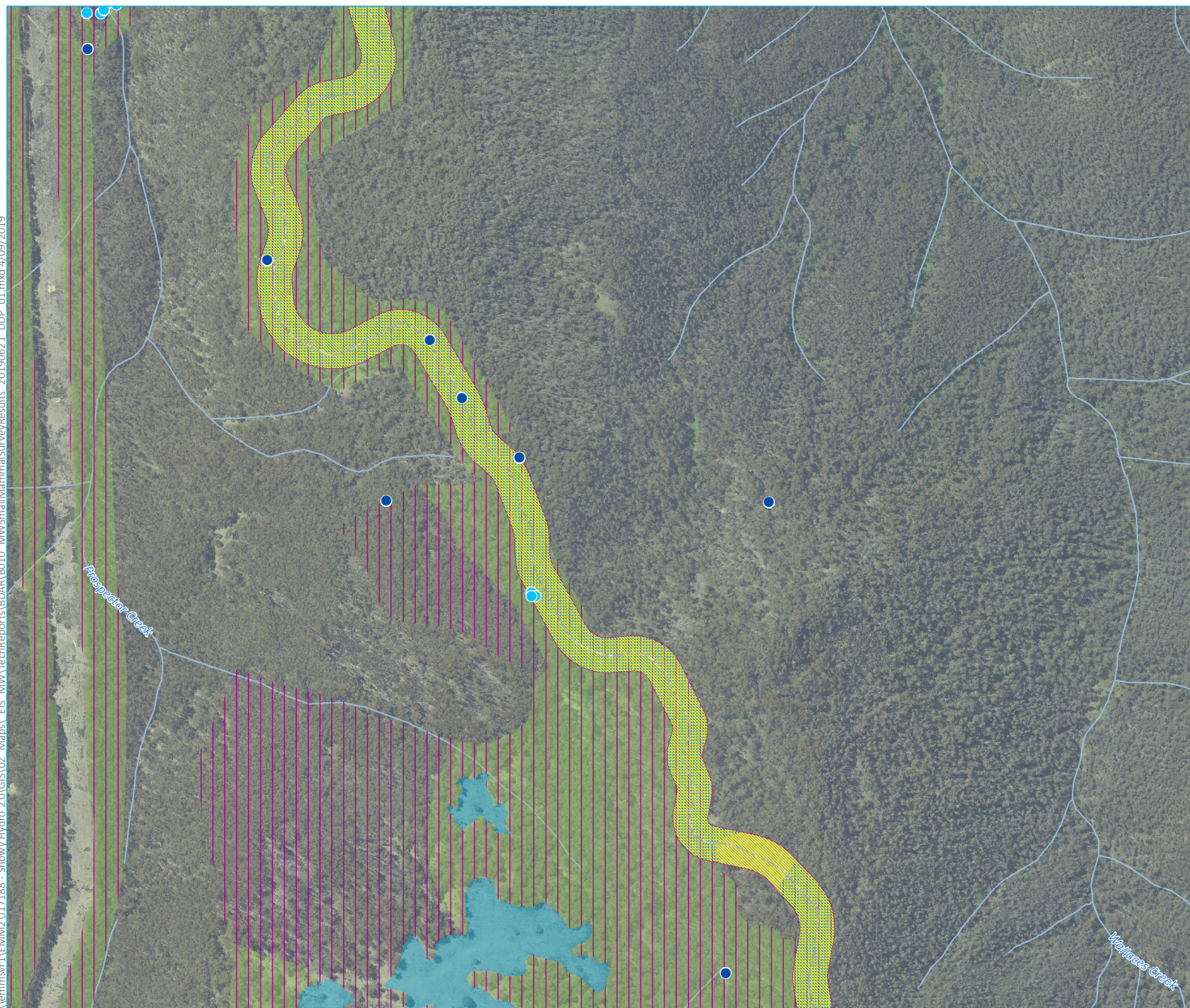
- Main Works disturbance footprint
- Approved footprint
- Waterbody
- Watercourse / drainage line
- Smoky Mouse species polygon
- Broad-toothed Rat species polygon
- Eastern Pygmy Possum species polygon
- Smoky mouse species habitat
- Broad-toothed Rat species habitat
- Eastern Pygmy-possum species habitat
- Eastern Pygmy-possum (2)
- Smoky Mouse (2)

Small terrestrial mammal survey results

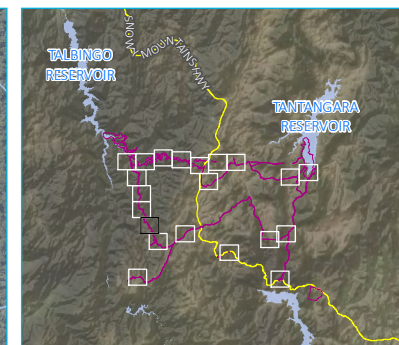
Snowy 2.0
Biodiversity Assessment Report
Main Works
Figure 6.7.18



\\lemmsvr1\EMM2\17188 - Snowy Hydro 2.0\GIS\02 Maps\ EIS MW\TechReports\BDAR\B010 MW\SmallMammalSurveyResults_20190621 DDP_01.mxd 4/09/2019



Source: EMM (2019); Snowy Hydro (2019); PhotoMapping (2018); SMEC (2018); DFSI (2017); GA (2015); LPMA (2011)



KEY

- Main Works disturbance footprint
- Watercourse / drainage line
- Smoky Mouse species polygon
- Eastern Pygmy Possum species polygon
- Smoky mouse species habitat
- Broad-toothed Rat species habitat
- Eastern Pygmy-possum species habitat
- Eastern Pygmy-possum (11)
- Smoky Mouse (8)

Small terrestrial mammal survey results

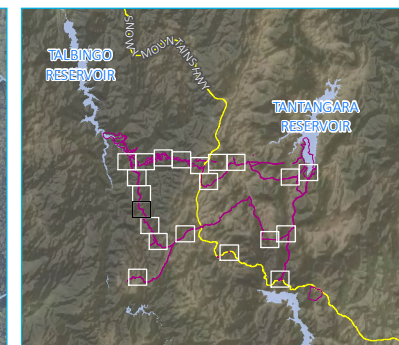
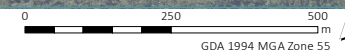
Snowy 2.0
Biodiversity Assessment Report
Main Works
Figure 6.7.19



\\lemmsvr1\EMM2\17188 - Snowy Hydro 2.0\GIS\02 Maps\ EIS MW\TechReports\BOAR\B010 MW\SmallMammalSurveyResults_20190621 DDP_01.mxd 4/09/2019



Source: EMM (2019); Snowy Hydro (2019); PhotoMapping (2018); SMEC (2018); DFSI (2017); GA (2015); LPMA (2011)



KEY

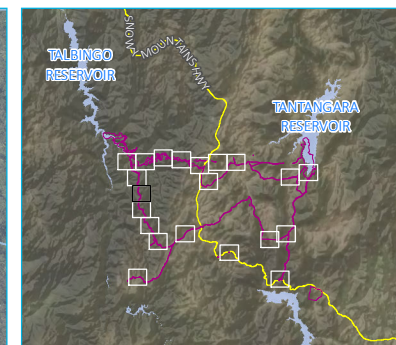
- Main Works disturbance footprint
- Approved footprint
- Watercourse / drainage line
- Smoky Mouse species polygon
- Broad-toothed Rat species polygon
- Eastern Pygmy Possum species polygon
- Smoky mouse species habitat
- Broad-toothed Rat species habitat
- Eastern Pygmy-possum species habitat
- Eastern Pygmy-possum (12)
- Smoky Mouse (16)

Small terrestrial mammal survey results

Snowy 2.0
Biodiversity Assessment Report
Main Works
Figure 6.7.20



\\lemmsvr1\EMM2\17188 - Snowy Hydro 2.0\GIS\02 Maps\ EIS MW\TechReports\BOAR\B010 MW\SmallMammalSurveyResults_20190621 DDP_01.mxd 4/09/2019

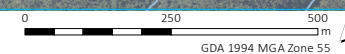


- KEY**
- Main Works disturbance footprint
 - Approved footprint
 - Watercourse / drainage line
 - Smoky Mouse species polygon
 - Eastern Pygmy Possum species polygon
 - Smoky mouse species habitat
 - Eastern Pygmy-possum species habitat
 - Smoky Mouse (2)

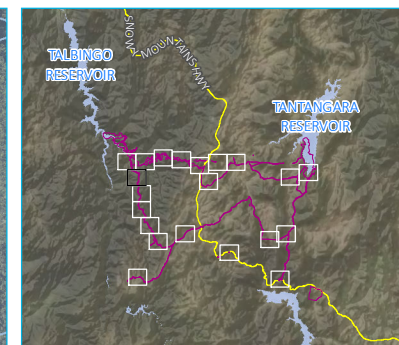
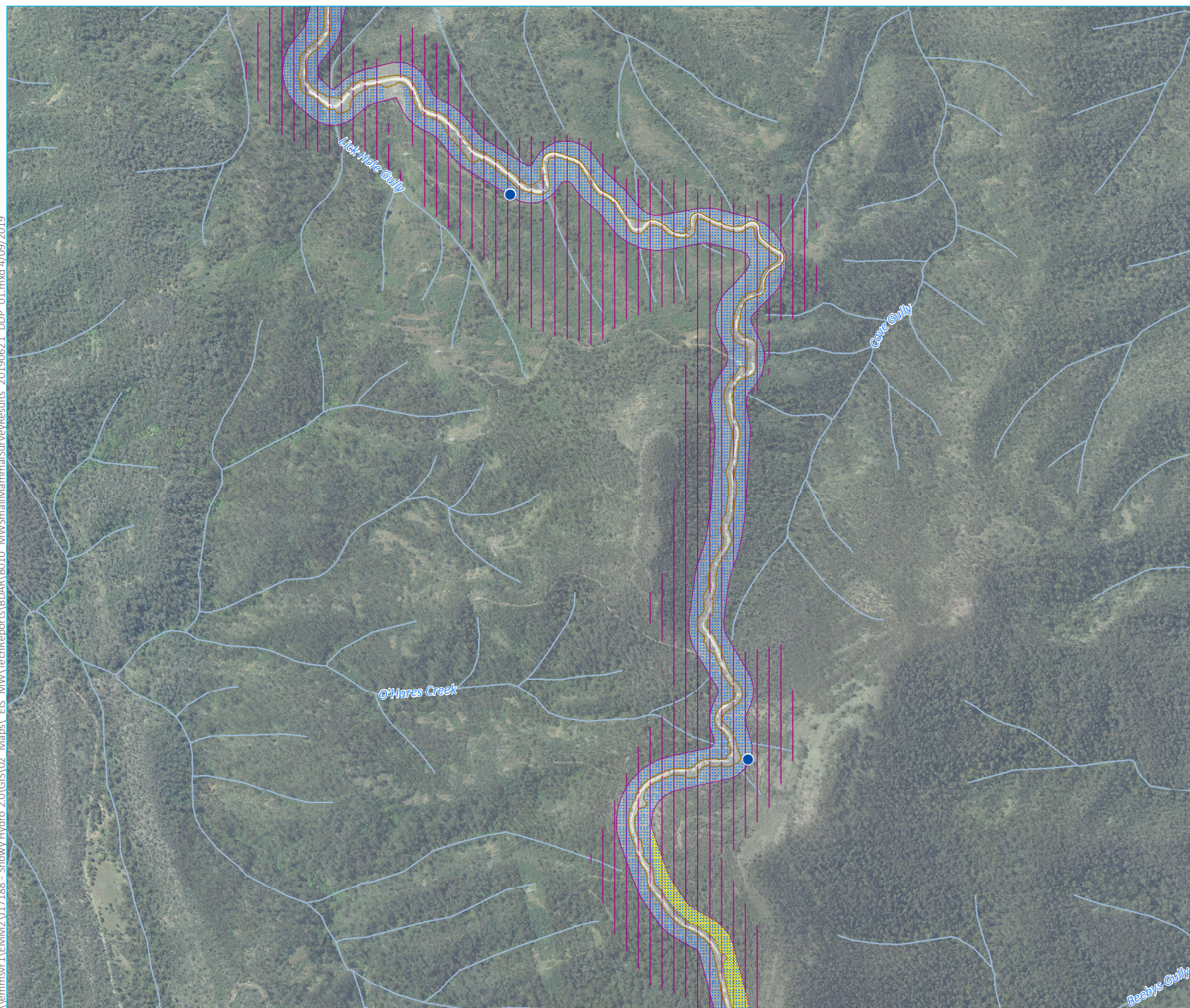
Small terrestrial mammal survey results

Snowy 2.0
Biodiversity Assessment Report
Main Works
Figure 6.7.21

Source: EMM (2019); Snowy Hydro (2019); PhotoMapping (2018); SMEC (2018); DFSI (2017); GA (2015); LPMA (2011)



\\lemmsvr1\EMM2\17188 - Snowy Hydro 2.0\GIS\02 Maps\ EIS MW\TechReports\BODAR\B010 MW\SmallMammalSurveyResults_20190621 DDP_01.mxd 4/09/2019

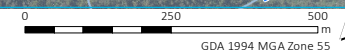


- KEY**
- Main Works disturbance footprint
 - Approved footprint
 - Watercourse / drainage line
 - Smoky Mouse species polygon
 - Eastern Pygmy Possum species polygon
 - Eastern Pygmy-possum species habitat
 - Eastern Pygmy-possum (3)

Small terrestrial mammal survey results

Snowy 2.0
Biodiversity Assessment Report
Main Works
Figure 6.7.22

Source: EMM (2019); Snowy Hydro (2019); PhotoMapping (2018); SMEC (2018); DFSI (2017); GA (2015); LPMA (2011)



\\lemmsvr1\EMM2\17188 - Snowy Hydro 2.0\GIS\02 Maps\ EIS MW\TechReports\BDAR\B018 MW\LargeMammalSurveyResults 20190903 DDP 01.mxd 4/09/2019

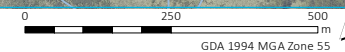


- KEY
- Main Works disturbance footprint
 - Approved footprint
 - Watercourse / drainage line
 - Spotted-tailed Quoll (1)

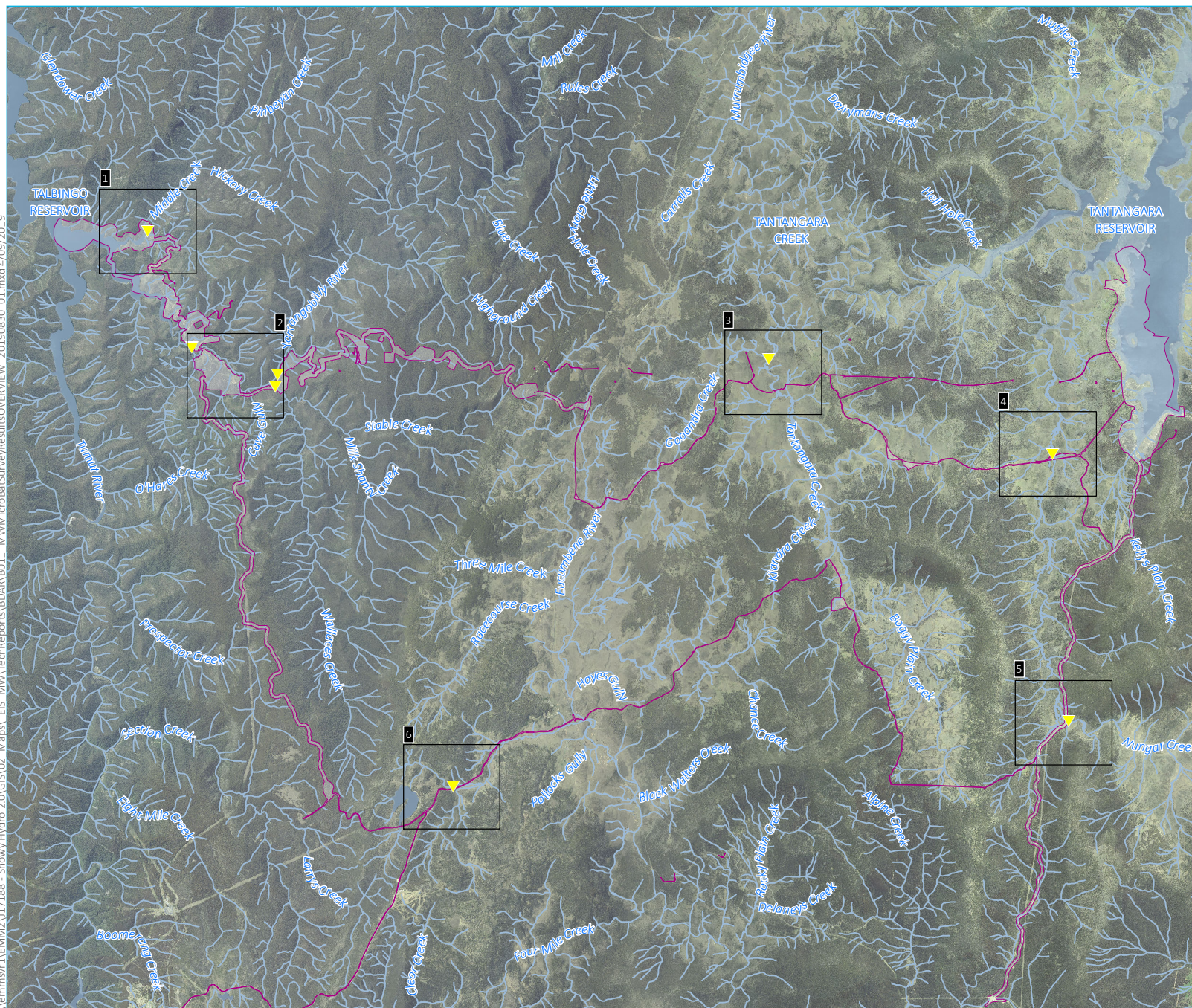
Large terrestrial mammal survey results

Snowy 2.0
Biodiversity Assessment Report
Main Works
Figure 6.8

Source: EMM (2019); Snowy Hydro (2019); PhotoMapping (2018); SMEC (2018); DFSI (2017); GA (2015); LPMA (2011)



\\lemmsvr1\EMM2\17188 - Snowy Hydro 2.0\GIS\02 Maps\ EIS MM\TechReports\BOAR\B011 MM\MicroBatSurveyResults\OVERVIEW 20190830_01.mxd 4/09/2019



- KEY
- Microchiropteran bat survey grid index
 - ▭ Main Works disturbance footprint
 - Waterbody
 - Watercourse / drainage line
 - ▼ Eastern Bentwing-bat (8)

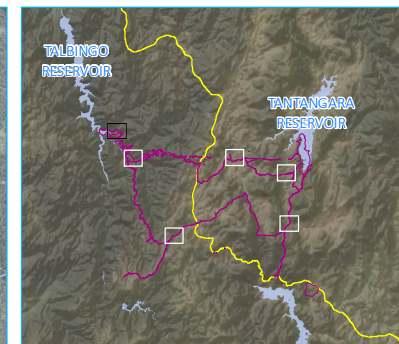
Microchiropteran bat survey results
- overview

Snowy 2.0
Biodiversity Assessment Report
Main Works
Figure 6.9.1

Source: EMM (2018); Snowy Hydro (2018); PhotoMapping (2018); SMEC (2018); DFSI (2017); GA (2015); LPMA (2011)

0 2.5 5 km
GDA 1994 MGA Zone 55





- KEY
- Main Works disturbance footprint
 - Approved footprint
 - Waterbody
 - Watercourse / drainage line
 - Eastern Bentwing-bat (1)

Microchiropteran bat survey results

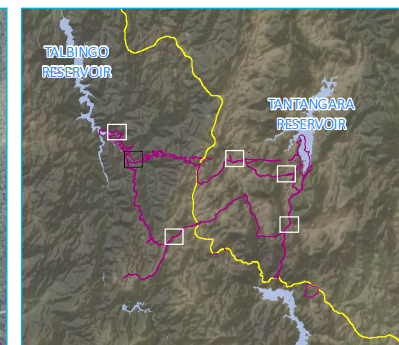
Snowy 2.0
Biodiversity Assessment Report
Main Works
Figure 6.9.2





\\lemmsvr1\EMM2\17188 - Snowy Hydro 2.0\GIS\02 Maps\ EIS MM\TechReports\BOAR\B011 MM\MicroBatSurveyResults_20190621 DOP_01.mxd 4/09/2019

Source: EMM (2019); Snowy Hydro (2019); PhotoMapping (2018); SMEC (2018); DFSI (2017); GA (2015); LPMA (2011)



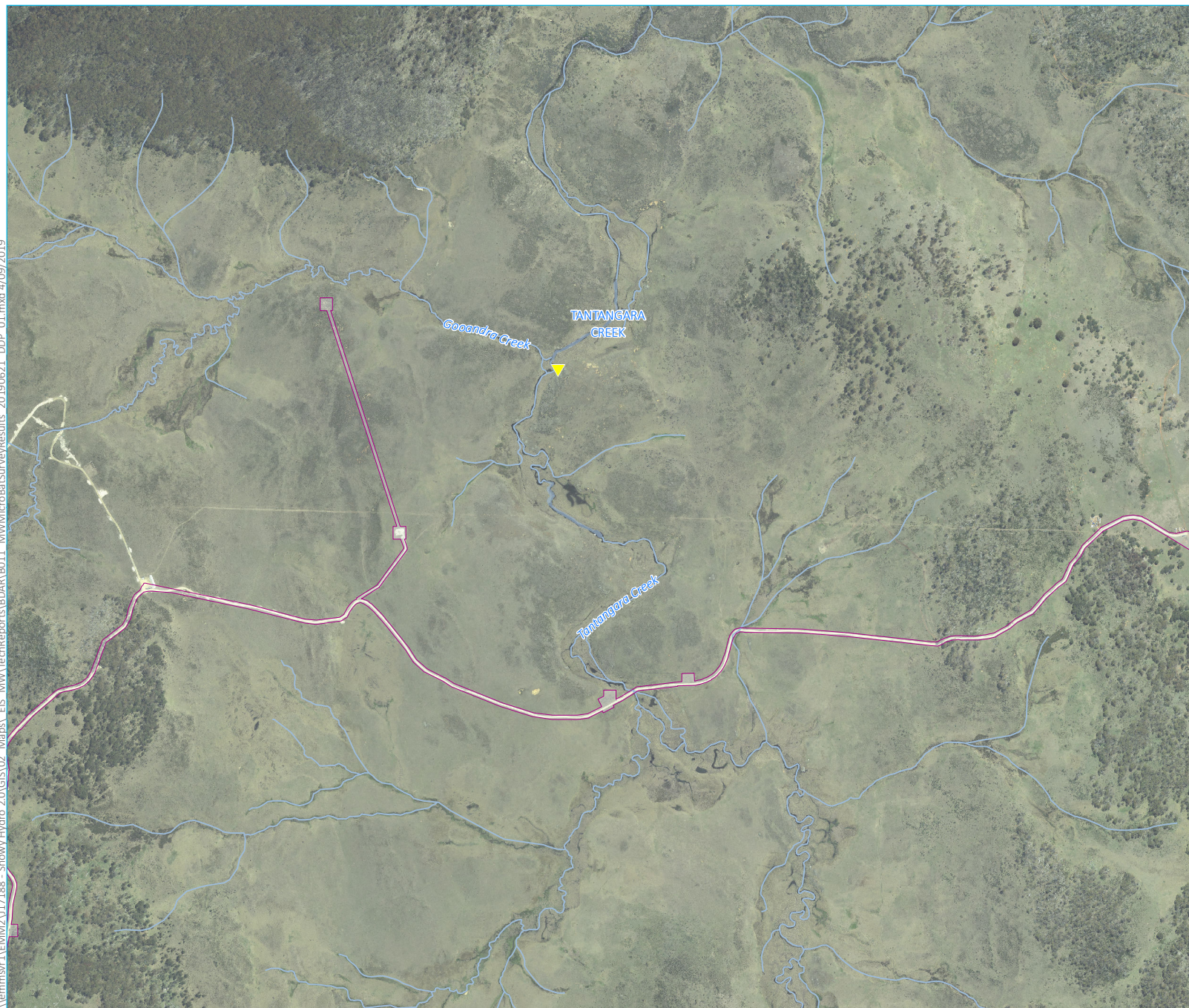
- KEY**
- Main Works disturbance footprint
 - Approved footprint
 - Waterbody
 - Watercourse / drainage line
 - ▼ Eastern Bentwing-bat (3)

Microchiropteran bat survey results

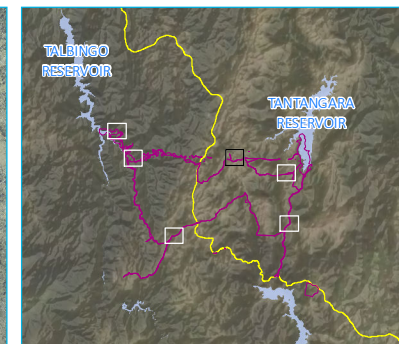
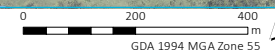
Snowy 2.0
Biodiversity Assessment Report
Main Works
Figure 6.9.3



\\lemmsvr1\EMM2\17188 - Snowy Hydro 2.0\GIS\02 Maps\ EIS MW\TechReports\BODAR B011 MW\MicroBatSurveyResults_ 20190621 DOP_ 01.mxd 4/09/2019



Source: EMM (2019); Snowy Hydro (2019); PhotoMapping (2018); SMEC (2018); DFSI (2017); GA (2015); LPMA (2011)

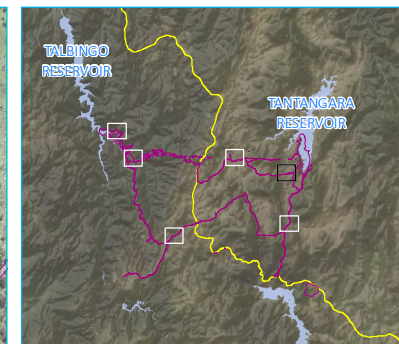
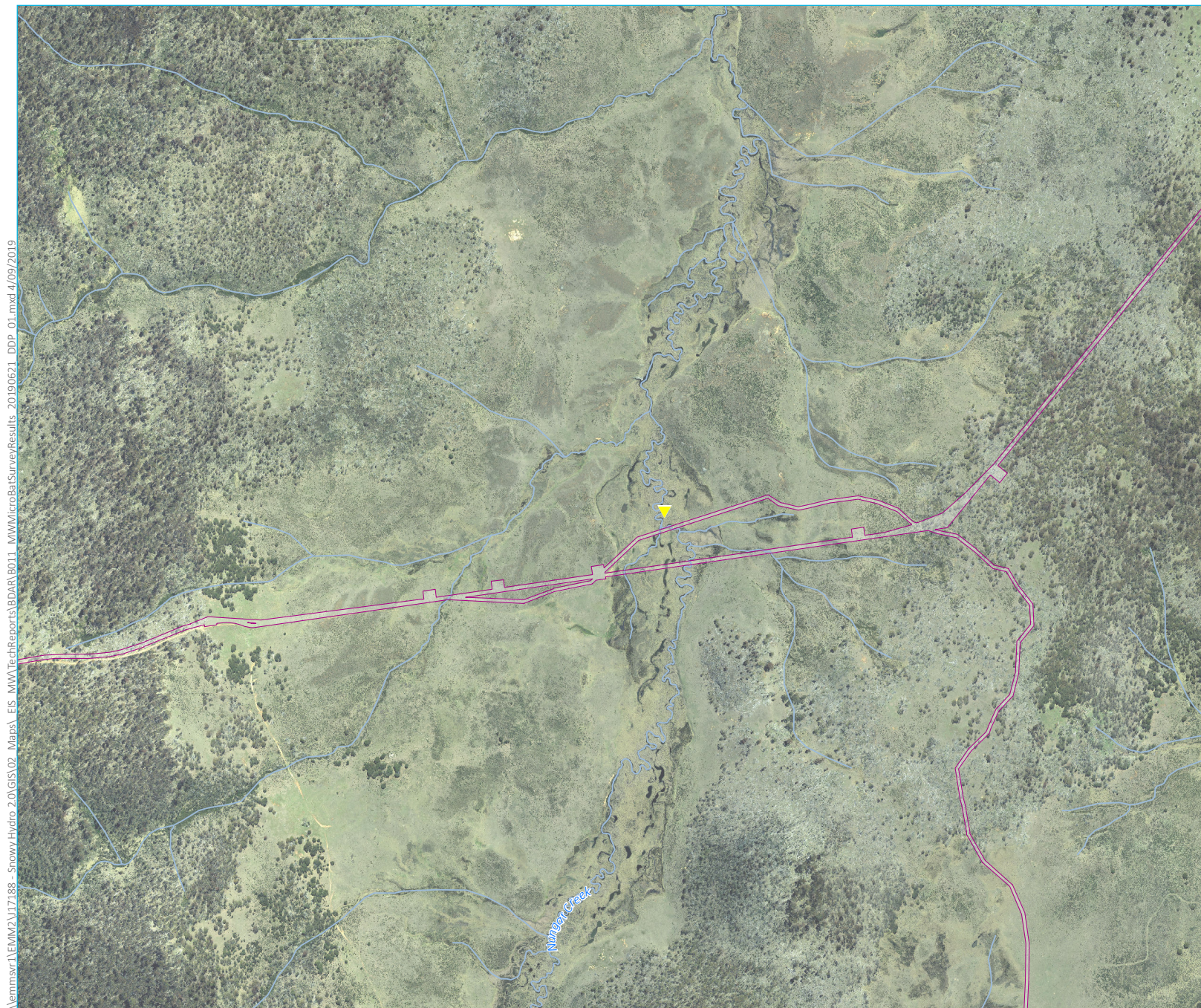


- KEY**
- Main Works disturbance footprint
 - Waterbody
 - Watercourse / drainage line
 - ▼ Eastern Bentwing-bat (1)

Microchiropteran bat survey results

Snowy 2.0
Biodiversity Assessment Report
Main Works
Figure 6.9.4





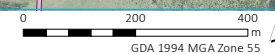
- KEY
- Main Works disturbance footprint
 - Watercourse / drainage line
 - ▼ Eastern Bentwing-bat (1)

Microchiropteran bat survey results

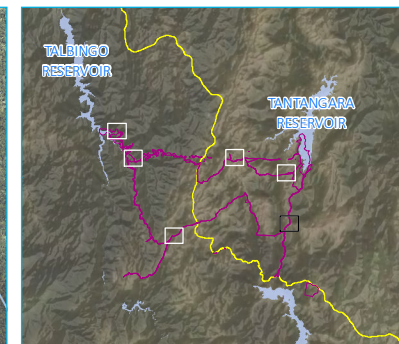
Snowy 2.0
Biodiversity Assessment Report
Main Works
Figure 6.9.5



Source: EMM (2019); Snowy Hydro (2019); PhotoMapping (2018); SMEC (2018); DFSI (2017); GA (2015); LPMA (2011)



\\lemmsvr1\EMM2\17188 - Snowy Hydro 2.0\GIS\02_Maps\ EIS_MW\TechReports\BOAR\B011_MW\MicroBatSurveyResults_20190621_DOP_01.mxd 4/09/2019

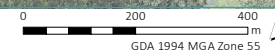


- KEY
- Main Works disturbance footprint
 - Watercourse / drainage line
 - ▼ Eastern Bentwing-bat (1)

Microchiropteran bat survey results

Snowy 2.0
Biodiversity Assessment Report
Main Works
Figure 6.9.6

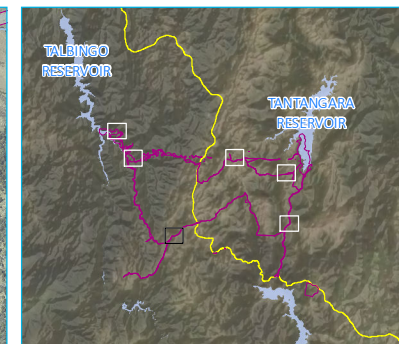
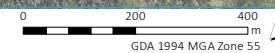
Source: EMM (2019); Snowy Hydro (2019); PhotoMapping (2018); SMEC (2018); DFSI (2017); GA (2015); LPMA (2011)



\\lemmsvr1\EMM2\17188 - Snowy Hydro 2.0\GIS\02 Maps\ EIS MM\TechReports\BODAR\B011 MM\MicroBatSurveyResults_20190621 DOP_01.mxd 4/09/2019



Source: EMM (2019); Snowy Hydro (2019); PhotoMapping (2018); SMEC (2018); DFSI (2017); GA (2015); LPMA (2011)



- KEY**
- Main Works disturbance footprint
 - Waterbody
 - Watercourse / drainage line
 - ▼ Eastern Bentwing-bat (1)

Microchiropteran bat survey results

Snowy 2.0
Biodiversity Assessment Report
Main Works
Figure 6.9.7

