

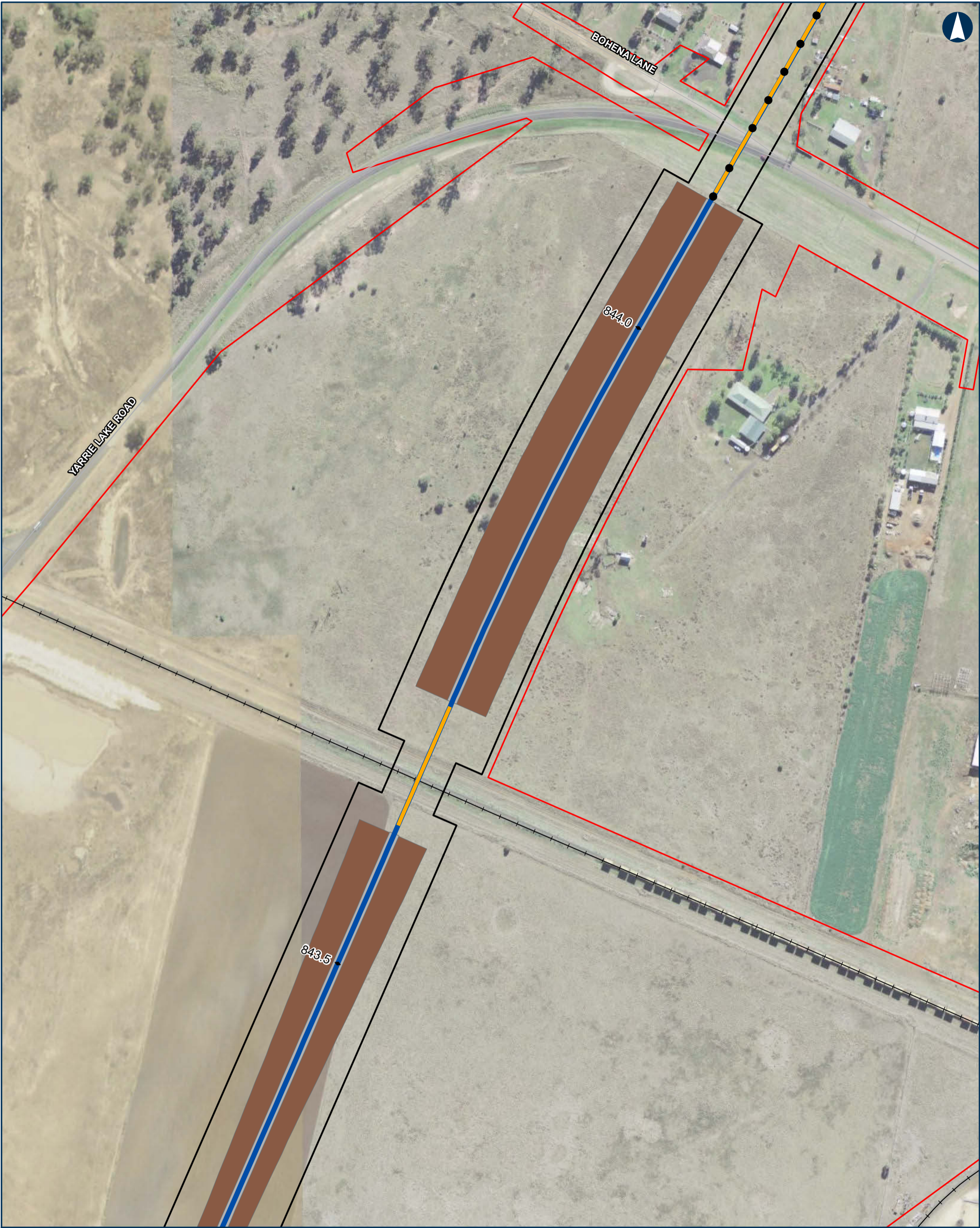
# TECHNICAL REPORT 03

Updated flooding and hydrology assessment

## **Appendix L** Narrabri viaduct—pier and embankment locations

NARROMINE TO NARRABRI PROJECT





NARROMINE TO NARRABRI

Narrabri Viaduct Pier Locations

Appendix L - Figure 1.1

0 50 100 Metres

Coordinate System: GDA 1994 MGA Zone 55

ARTC makes no representation or warranty and assumes no duty of care or other responsibility to any party as to the completeness, accuracy or suitability of the information contained in this GIS map. The GIS map has been prepared from material provided to ARTC by an external source and ARTC has not taken any steps to verify the completeness, accuracy or suitability of that material. ARTC will not be responsible for any loss or damage suffered as a result of any person whatsoever placing reliance upon the information contained within this GIS map.

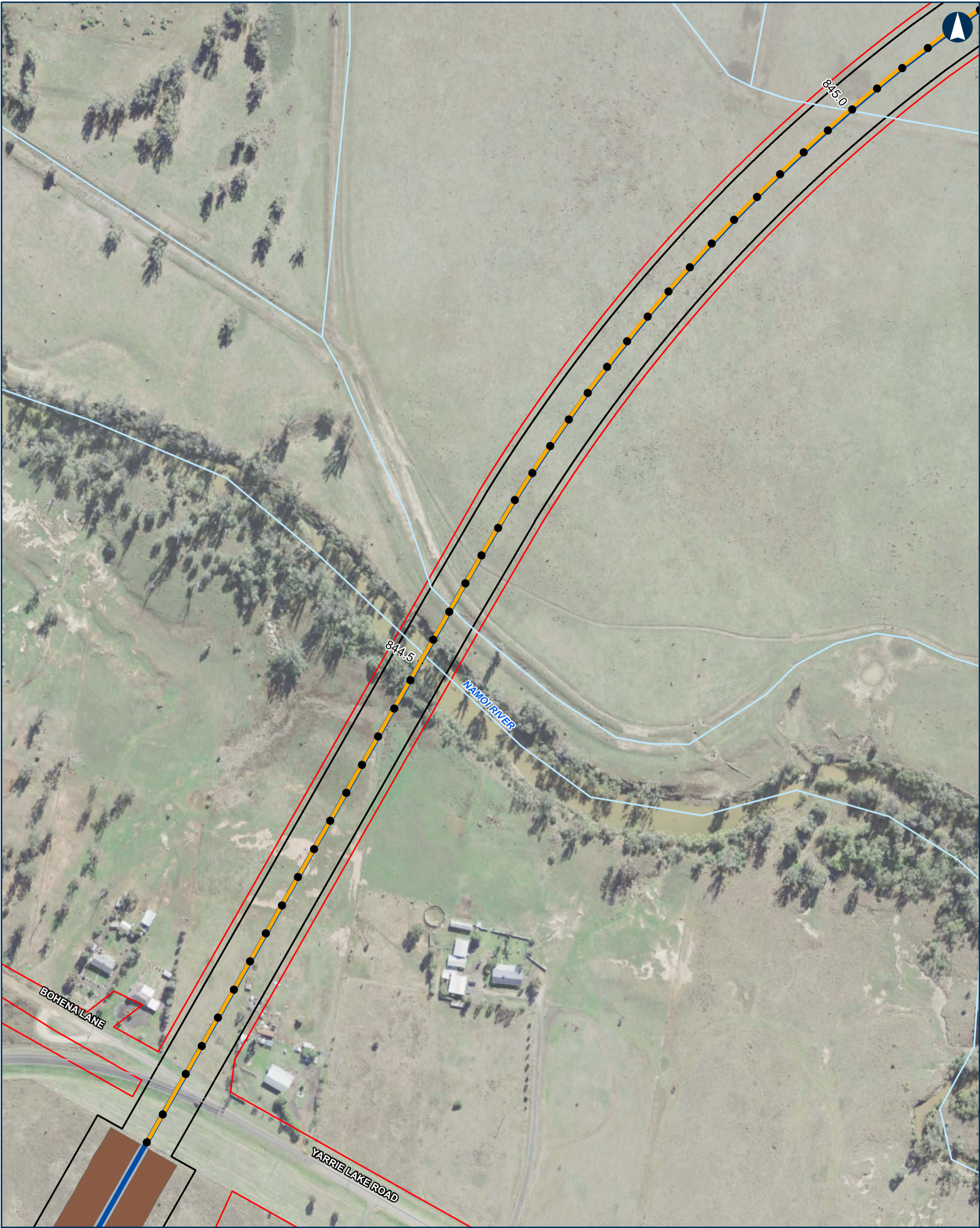
Date: 30/06/2022 Paper: A3  
Author: JacobsGHD Scale: 1:2,500  
Data Sources: Basemap layers: NSWSS; all other layers: JacobsGHD

- Narrabri viaduct pier locations
- Bridge
- Alignment
- Sub arterial road
- Local road
- Railway
- Watercourse
- The proposal
- Rail Corridor
- Element
- Fill batter
- Top of formation



INLAND RAIL ARTC

The Australian Government is delivering Inland Rail through the Australian Rail Track Corporation (ARTC), in partnership with the private sector.



NARROMINE TO NARRABRI

Narrabri Viaduct Pier Locations

Appendix L - Figure 1.2

050100Metres

Coordinate System: GDA 1994 MGA Zone 55

ARTC makes no representation or warranty and assumes no duty of care or other responsibility to any party as to the completeness, accuracy or suitability of the information contained in this GIS map. The GIS map has been prepared from material provided to ARTC by an external source and ARTC has not taken any steps to verify the completeness, accuracy or suitability of that material. ARTC will not be responsible for any loss or damage suffered as a result of any person whatsoever placing reliance upon the information contained within this GIS map.

Date: 30/06/2022

Paper: A3

Author: JacobsGHD

Scale: 1:2,500

Data Sources: Basemap layers: NSWSS; all other layers: JacobsGHD

- Narrabri viaduct pier locations

Bridge

Alignment

Sub arterial road

Local road

Watercourse

The proposal

Rail Corridor
- Fill batter

■

Top of formation



The Australian Government is delivering Inland Rail through the Australian Rail Track Corporation (ARTC), in partnership with the private sector.



NARROMINE TO NARRABRI

Narrabri Viaduct Pier Locations

Appendix L - Figure 1.3

0 50 100 Metres

Coordinate System: GDA 1994 MGA Zone 55

ARTC makes no representation or warranty and assumes no duty of care or other responsibility to any party as to the completeness, accuracy or suitability of the information contained in this GIS map. The GIS map has been prepared from material provided to ARTC by an external source and ARTC has not taken any steps to verify the completeness, accuracy or suitability of that material. ARTC will not be responsible for any loss or damage suffered as a result of any person whatsoever placing reliance upon the information contained within this GIS map.

Date: 30/06/2022 Paper: A3  
Author: JacobsGHD Scale: 1:2,500  
Data Sources: Basemap layers: NSWSS; all other layers: JacobsGHD

- Narrabri viaduct pier locations
- Bridge
- Alignment
- Watercourse
- The proposal
- Rail Corridor



INLAND RAIL ARTC

The Australian Government is delivering Inland Rail through the Australian Rail Track Corporation (ARTC), in partnership with the private sector.



NARROMINE TO NARRABRI

Narrabri Viaduct Pier Locations

Appendix L - Figure 1.4

0 50 100 Metres

Coordinate System: GDA 1994 MGA Zone 55

ARTC makes no representation or warranty and assumes no duty of care or other responsibility to any party as to the completeness, accuracy or suitability of the information contained in this GIS map. The GIS map has been prepared from material provided to ARTC by an external source and ARTC has not taken any steps to verify the completeness, accuracy or suitability of that material. ARTC will not be responsible for any loss or damage suffered as a result of any person whatsoever placing reliance upon the information contained within this GIS map.

Date: 30/06/2022 Paper: A3  
Author: JacobsGHD Scale: 1:2,500  
Data Sources: Basemap layers: NSWSS; all other layers: JacobsGHD

- Narrabri viaduct pier locations
- Bridge
- Alignment
- Local road
- Watercourse
- The proposal
- Rail Corridor



The Australian Government is delivering Inland Rail through the Australian Rail Track Corporation (ARTC), in partnership with the private sector.



**NARROMINE TO NARRABRI**

**Narrabri Viaduct Pier Locations**

Appendix L - Figure 1.5

0 50 100 Metres

Coordinate System: GDA 1994 MGA Zone 55

ARTC makes no representation or warranty and assumes no duty of care or other responsibility to any party as to the completeness, accuracy or suitability of the information contained in this GIS map. The GIS map has been prepared from material provided to ARTC by an external source and ARTC has not taken any steps to verify the completeness, accuracy or suitability of that material. ARTC will not be responsible for any loss or damage suffered as a result of any person whatsoever placing reliance upon the information contained within this GIS map.

Date: 30/06/2022 Paper: A3  
Author: JacobsGHD Scale: 1:2,500  
Data Sources: Basemap layers: NSWSS; all other layers: JacobsGHD

- Narrabri viaduct pier locations
- Bridge
- Alignment
- Local road
- Watercourse
- The proposal
- Rail Corridor



**INLAND RAIL** **ARTC**

The Australian Government is delivering Inland Rail through the Australian Rail Track Corporation (ARTC), in partnership with the private sector.



NARROMINE TO NARRABRI

Narrabri Viaduct Pier Locations

Appendix L - Figure 1.6

0 50 100 Metres

Coordinate System: GDA 1994 MGA Zone 55

ARTC makes no representation or warranty and assumes no duty of care or other responsibility to any party as to the completeness, accuracy or suitability of the information contained in this GIS map. The GIS map has been prepared from material provided to ARTC by an external source and ARTC has not taken any steps to verify the completeness, accuracy or suitability of that material. ARTC will not be responsible for any loss or damage suffered as a result of any person whatsoever placing reliance upon the information contained within this GIS map.

Date: 30/06/2022 Paper: A3  
Author: JacobsGHD Scale: 1:2,500  
Data Sources: Basemap layers: NSWSS; all other layers: JacobsGHD

- | ● | Narrabri viaduct pier locations | Element |                  |
|---|---------------------------------|---------|------------------|
| — | Bridge                          | —       | Fill batter      |
| — | Alignment                       | —       | Top of formation |
| — | Primary road                    |         |                  |
| — | Local road                      |         |                  |
| — | Watercourse                     |         |                  |
| — | The proposal                    |         |                  |
| — | Rail Corridor                   |         |                  |



INLAND RAIL = ARTC

The Australian Government is delivering Inland Rail through the Australian Rail Track Corporation (ARTC), in partnership with the private sector.



NARROMINE TO NARRABRI

Narrabri Viaduct Pier Locations

Appendix L - Figure 1.7

0 50 100 Metres

Coordinate System: GDA 1994 MGA Zone 55

ARTC makes no representation or warranty and assumes no duty of care or other responsibility to any party as to the completeness, accuracy or suitability of the information contained in this GIS map. The GIS map has been prepared from material provided to ARTC by an external source and ARTC has not taken any steps to verify the completeness, accuracy or suitability of that material. ARTC will not be responsible for any loss or damage suffered as a result of any person whatsoever placing reliance upon the information contained within this GIS map.

Date: 30/06/2022 Paper: A3  
Author: JacobsGHD Scale: 1:2,500  
Data Sources: Basemap layers: NSWSS; all other layers: JacobsGHD

- Narrabri viaduct pier locations
- Bridge
- Culvert
- Alignment
- Primary road
- Local road
- Watercourse
- The proposal
- Rail Corridor
- Element
- Fill batter
- Top of formation



INLAND RAIL

ARTC

The Australian Government is delivering Inland Rail through the Australian Rail Track Corporation (ARTC), in partnership with the private sector.