

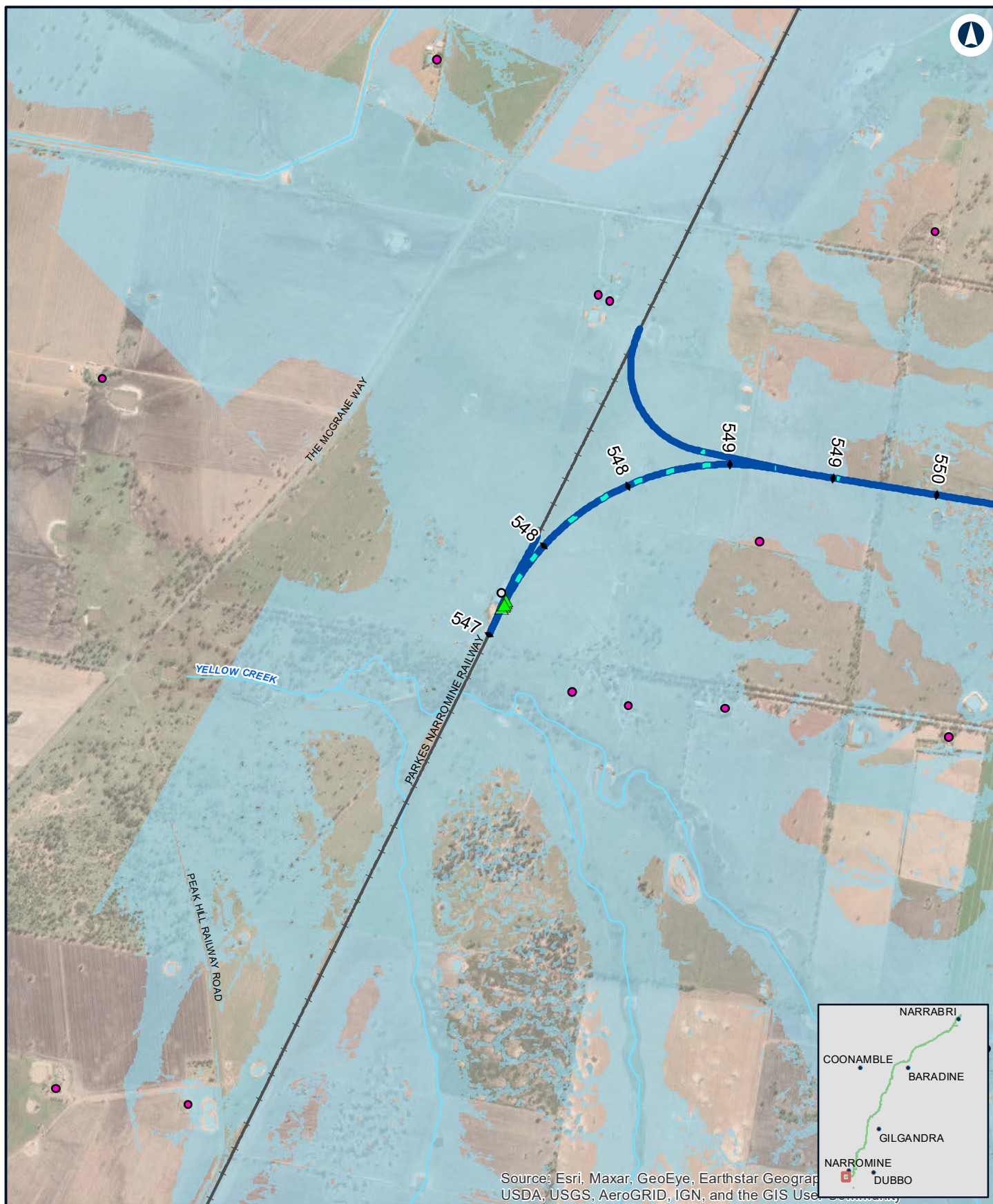
TECHNICAL REPORT 03

Updated flooding and hydrology assessment

Appendix K Track overtopping locations —rare flood events

NARROMINE TO NARRABRI PROJECT





NARROMINE TO NARRABRI

Track overtopping locations 1% AEP with blockage

Appendix K - Figure 1.1

0 0.35 0.7
Km

Coordinate System: GDA 1994 MGA Zone 55

ARTC makes no representation or warranty and assumes no duty of care or other responsibility to any party as to the completeness, accuracy or suitability of the information contained in this GIS map. The GIS map has been prepared from material provided to ARTC by an external source and ARTC has not taken any steps to verify the completeness, accuracy or suitability of that material.

ARTC will not be responsible for any loss or damage suffered as a result of any person whatsoever placing reliance upon the information contained within this GIS map.

Date: 8/08/2022 Paper: A4
Author: JacobsGHD Scale: 1:25,000
Data Sources: Basemap layers: NSWSS;

LEGEND

Structure type

- Commercial/Industrial
- Residential

▲ Potential overtopping

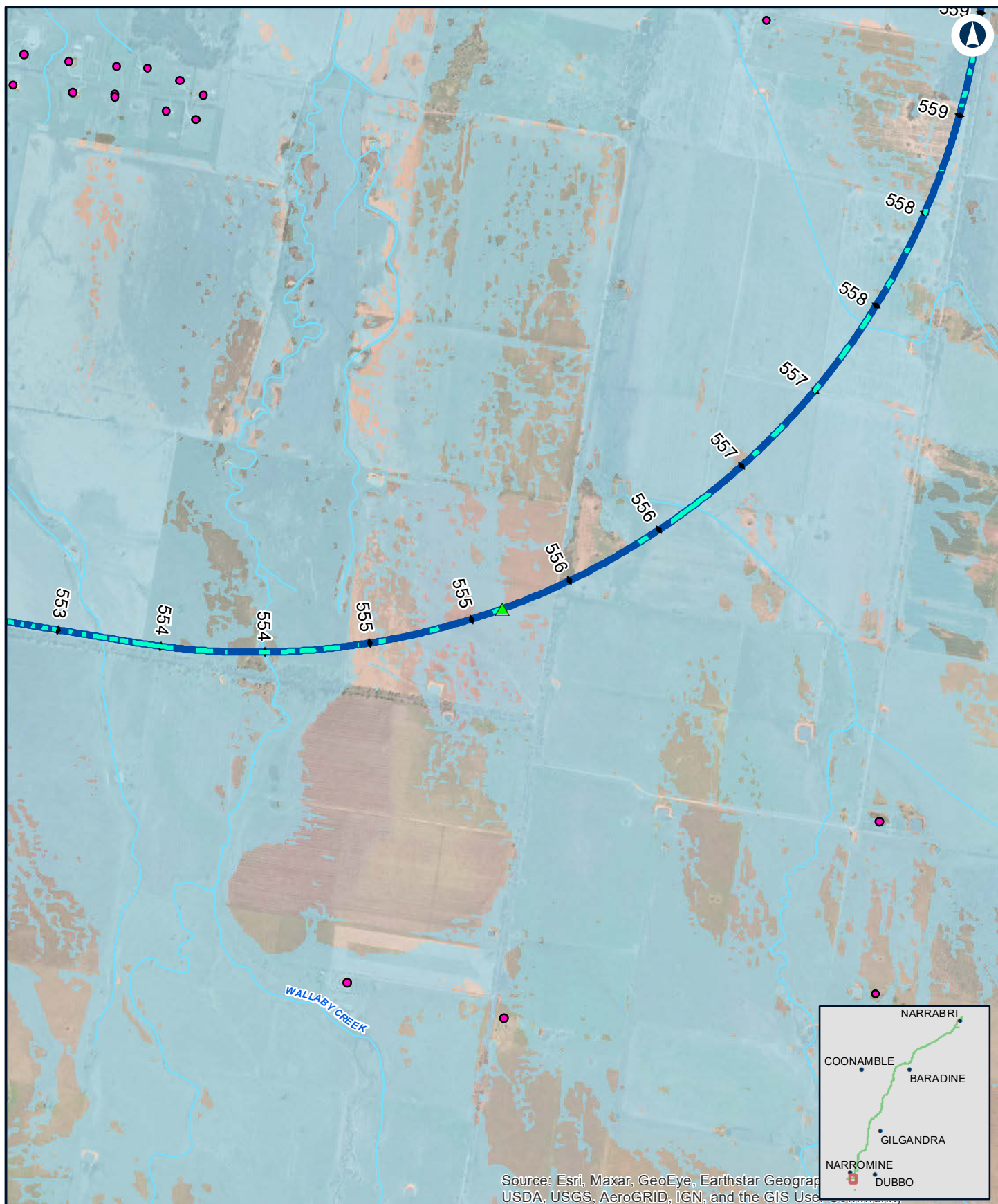
— Alignment

— Culvert

— Railway

INLAND RAIL **ARTC**

The Australian Government is delivering Inland Rail through the Australian Rail Track Corporation (ARTC), in partnership with the private sector.

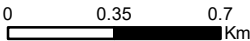


Source: Esri, Maxar, GeoEye, Earthstar Geographics, CNR Aero, IGN, and the GIS User Community

NARROMINE TO NARRABRI

Track overtopping locations 1% AEP with blockage

Appendix K - Figure 1.2



Coordinate System: GDA 1994 MGA Zone 55

ARTC makes no representation or warranty and assumes no duty of care or other responsibility to any party as to the completeness, accuracy or suitability of the information contained in this GIS map. The GIS map has been prepared from material provided to ARTC by an external source and ARTC has not taken any steps to verify the completeness, accuracy or suitability of that material. ARTC will not be responsible for any loss or damage suffered as a result of any person whatsoever placing reliance upon the information contained within this GIS map.

Date: 8/08/2022
 Author: JacobsGHD
 Data Sources: Basemap layers: NSWSS;

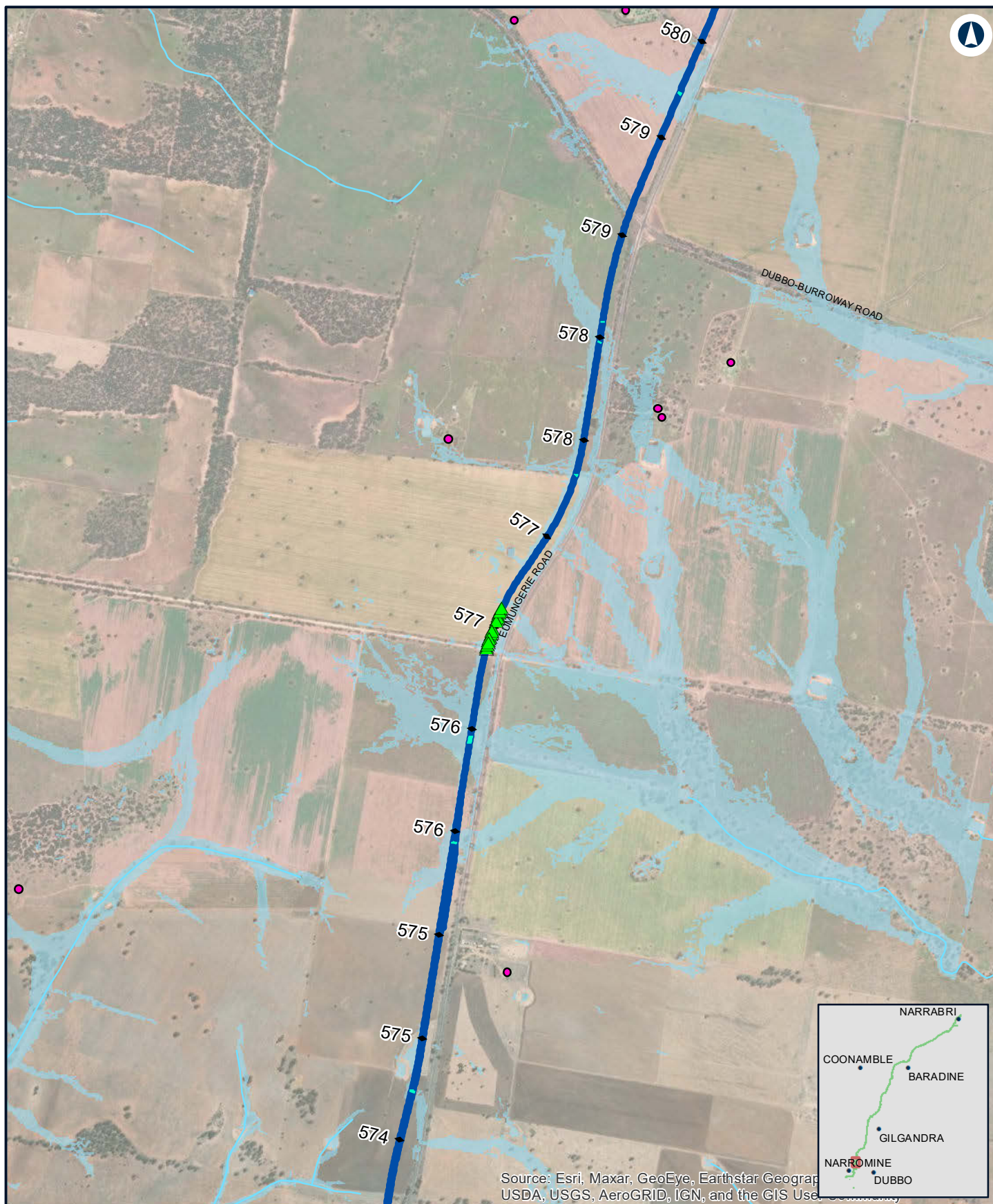
Paper: A4
 Scale: 1:25,000

LEGEND

- Structure type**
- Residential
 - ▲ Potential overtopping
 - Alignment
 - Culvert

INLAND RAIL **ARTC**

The Australian Government is delivering Inland Rail through the Australian Rail Track Corporation (ARTC), in partnership with the private sector.



NARROMINE TO NARRABRI

Track overtopping locations 1% AEP with blockage

Appendix K - Figure 1.3

0 0.35 0.7
Km

Coordinate System: GDA 1994 MGA Zone 55

ARTC makes no representation or warranty and assumes no duty of care or other responsibility to any party as to the completeness, accuracy or suitability of the information contained in this GIS map. The GIS map has been prepared from material provided to ARTC by an external source and ARTC has not taken any steps to verify the completeness, accuracy or suitability of that material.

ARTC will not be responsible for any loss or damage suffered as a result of any person whatsoever placing reliance upon the information contained within this GIS map.

Date: 8/08/2022 Paper: A4
Author: JacobsGHD Scale: 1:25,000
Data Sources: Basemap layers: NSWSS;

LEGEND

- Structure type**
- ▲ Potential overtopping
 - Residential
 - Alignment
 - Culvert

INLAND RAIL **ARTC**

The Australian Government is delivering Inland Rail through the Australian Rail Track Corporation (ARTC), in partnership with the private sector.



NARROMINE TO NARRABRI

Track overtopping locations 1% AEP with blockage

Appendix K - Figure 1.4

0 0.35 0.7
Km

Coordinate System: GDA 1994 MGA Zone 55

ARTC makes no representation or warranty and assumes no duty of care or other responsibility to any party as to the completeness, accuracy or suitability of the information contained in this GIS map. The GIS map has been prepared from material provided to ARTC by an external source and ARTC has not taken any steps to verify the completeness, accuracy or suitability of that material.

ARTC will not be responsible for any loss or damage suffered as a result of any person whatsoever placing reliance upon the information contained within this GIS map.

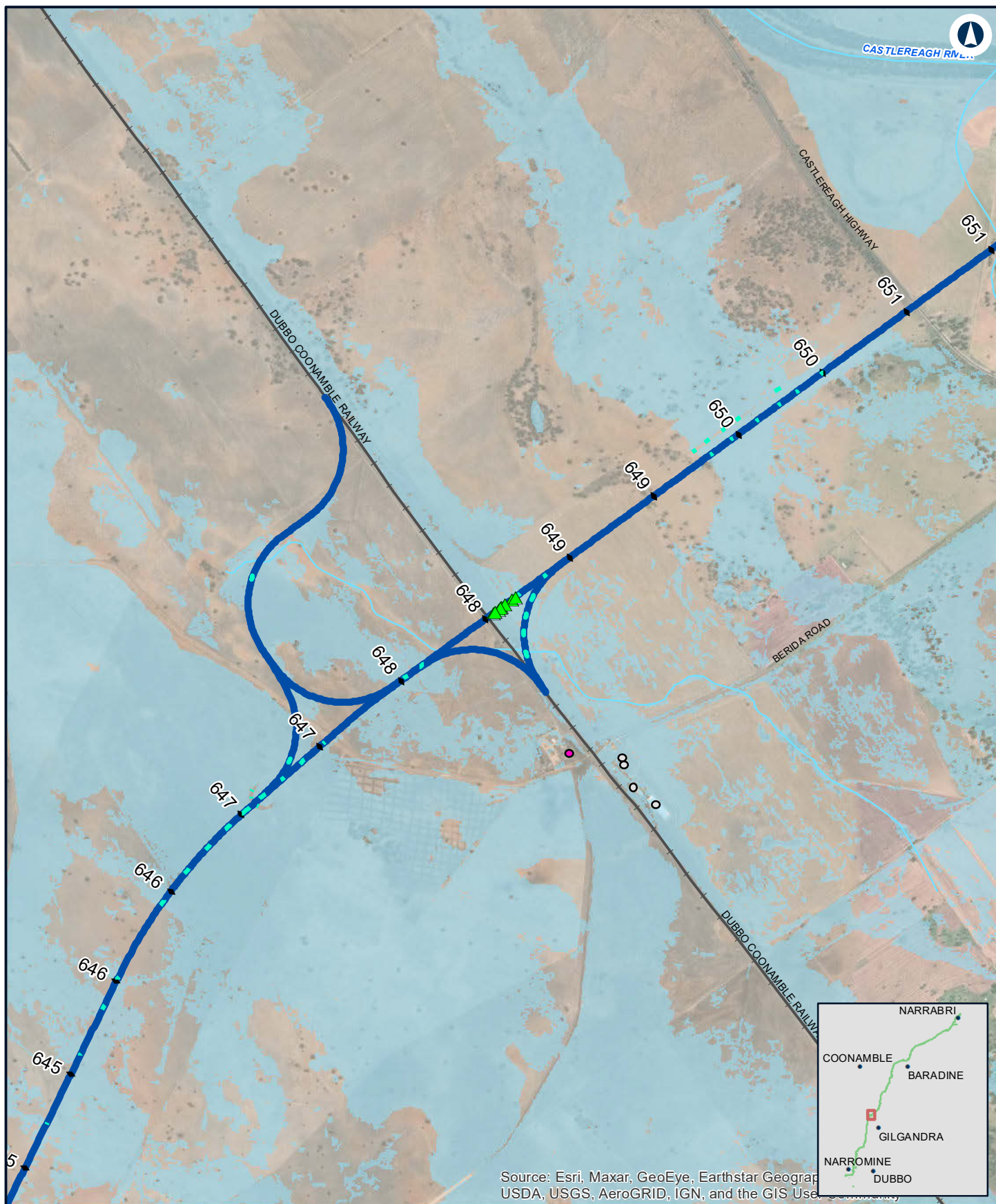
Date: 8/08/2022 Paper: A4
Author: JacobsGHD Scale: 1:25,000
Data Sources: Basemap layers: NSWSS;

LEGEND

- Structure type**
- ▲ Potential overtopping
 - Residential
 - Alignment
 - Bridge

INLAND RAIL **ARTC**

The Australian Government is delivering Inland Rail through the Australian Rail Track Corporation (ARTC), in partnership with the private sector.



NARROMINE TO NARRABRI

Track overtopping locations 1% AEP with blockage

Appendix K - Figure 1.5

0 0.35 0.7
Km

Coordinate System: GDA 1994 MGA Zone 55

ARTC makes no representation or warranty and assumes no duty of care or other responsibility to any party as to the completeness, accuracy, or suitability of the information contained in this GIS map. The GIS map has been prepared from material provided to ARTC by an external source and ARTC has not taken any steps to verify the completeness, accuracy or suitability of that material.

ARTC will not be responsible for any loss or damage suffered as a result of any person whatsoever placing reliance upon the information contained within this GIS map.

Date: 8/08/2022 Paper: A4
Author: JacobsGHD Scale: 1:25,000
Data Sources: Basemap layers: NSWSS;

LEGEND

Structure type

- Commercial/Industrial
- Residential

▲ Potential overtopping

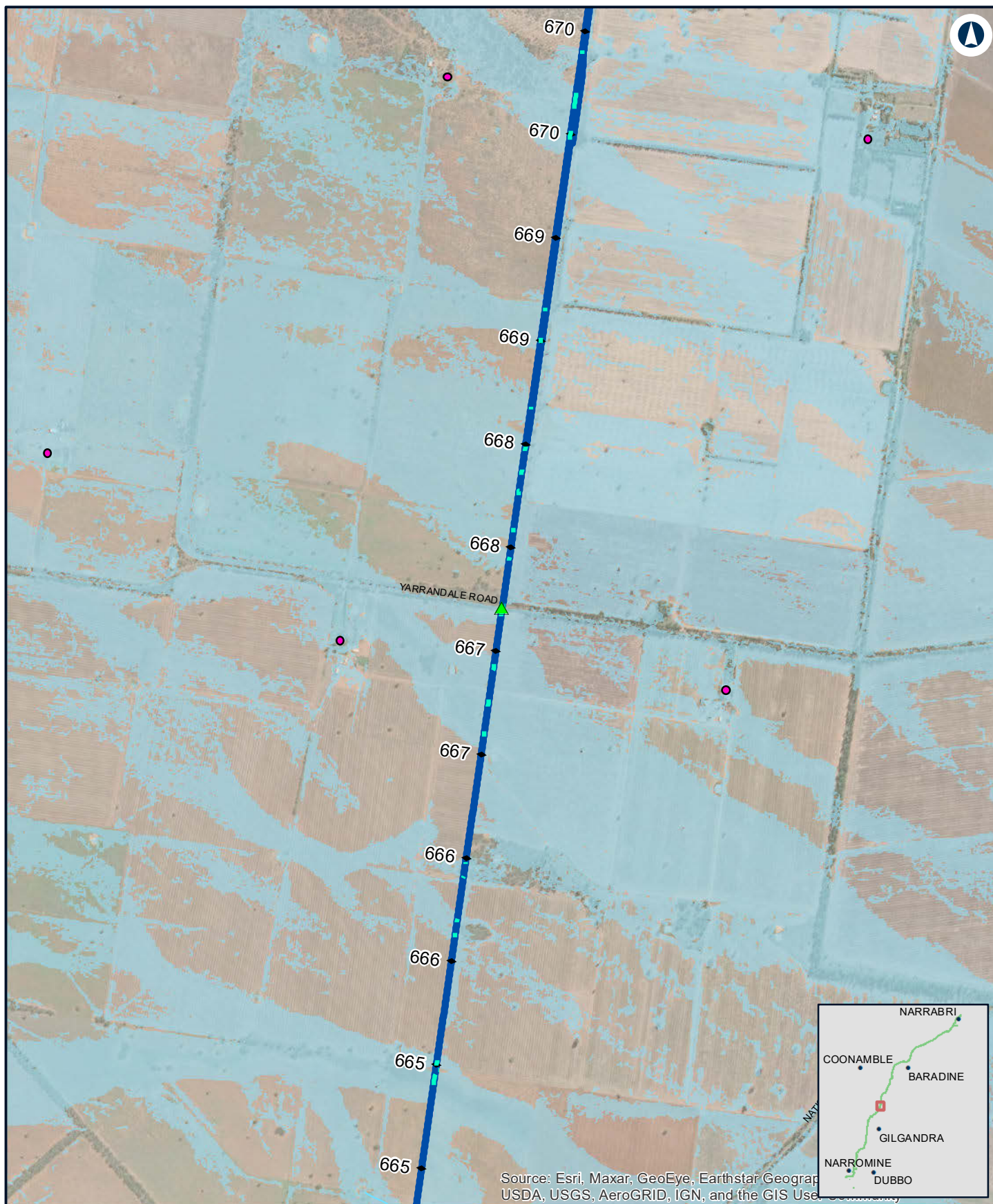
— Alignment

— Culvert

— Railway

INLAND RAIL **ARTC**

The Australian Government is delivering Inland Rail through the Australian Rail Track Corporation (ARTC), in partnership with the private sector.



NARROMINE TO NARRABRI

Track overtopping locations 1% AEP with blockage

Appendix K - Figure 1.6

0 0.35 0.7
Km

Coordinate System: GDA 1994 MGA Zone 55

ARTC makes no representation or warranty and assumes no duty of care or other responsibility to any party as to the completeness, accuracy or suitability of the information contained in this GIS map. The GIS map has been prepared from material provided to ARTC by an external source and ARTC has not taken any steps to verify the completeness, accuracy or suitability of that material.

ARTC will not be responsible for any loss or damage suffered as a result of any person whatsoever placing reliance upon the information contained within this GIS map.

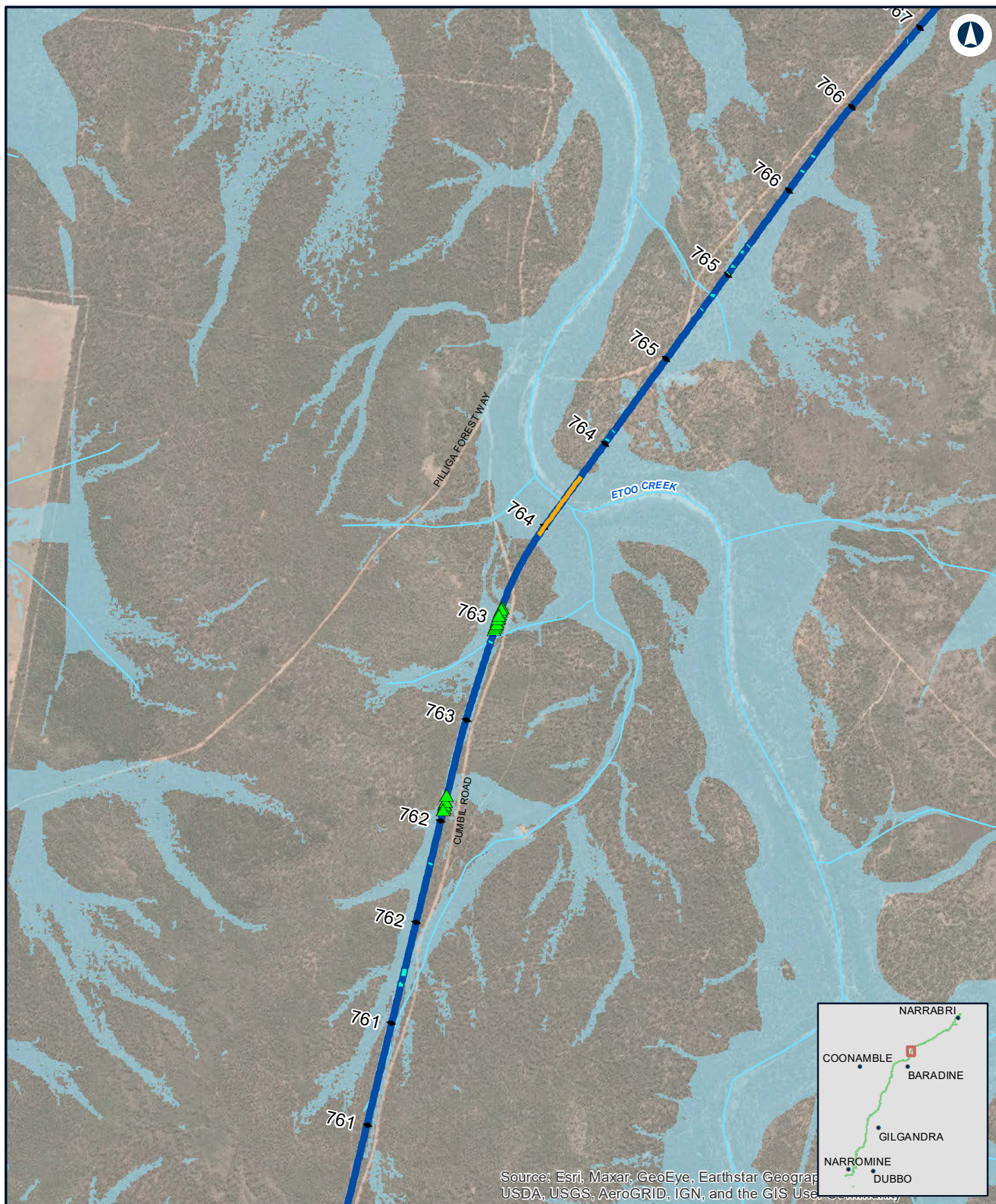
Date: 8/08/2022 Paper: A4
Author: JacobsGHD Scale: 1:25,000
Data Sources: Basemap layers: NSWSS;

LEGEND

- Structure type**
- ▲ Potential overtopping
 - Residential
 - Alignment
 - - - Culvert

INLAND RAIL **ARTC**

The Australian Government is delivering Inland Rail through the Australian Rail Track Corporation (ARTC), in partnership with the private sector.



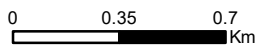
Source: Esri, Maxar, GeoEye, Earthstar Geographics, CNR Aero, IGN, and the GIS User Community



NARROMINE TO NARRABRI

Track overtopping locations 1% AEP with blockage

Appendix K - Figure 1.7



LEGEND

- ▲ Potential overtopping
- Alignment
- Bridge
- Culvert

Coordinate System: GDA 1994 MGA Zone 55

ARTC makes no representation or warranty and assumes no duty of care or other responsibility to any party as to the completeness, accuracy or suitability of the information contained in this GIS map. The GIS map has been prepared from material provided to ARTC by an external source and ARTC has not taken any steps to verify the completeness, accuracy or suitability of that material.

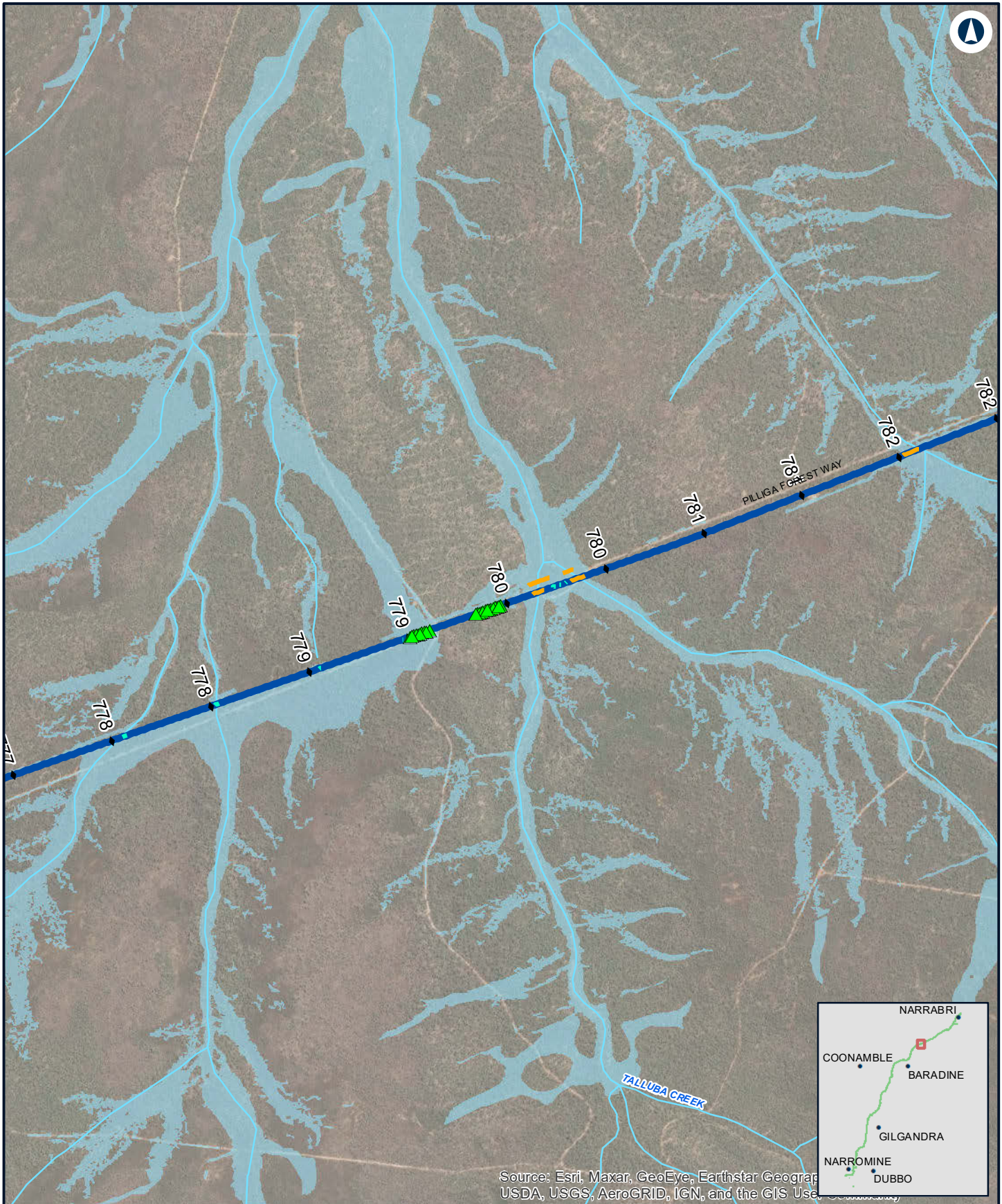
ARTC will not be responsible for any loss or damage suffered as a result of any person whatsoever placing reliance upon the information contained within this GIS map.

Date: 8/08/2022
 Author: JacobsGHD
 Data Sources: Basemap layers: NSWSS;

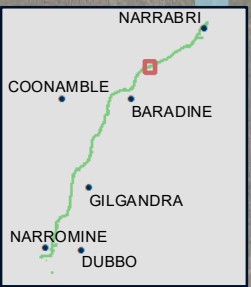
Paper: A4
 Scale: 1:25,000

INLAND RAIL **ARTC**

The Australian Government is delivering Inland Rail through the Australian Rail Track Corporation (ARTC), in partnership with the private sector.



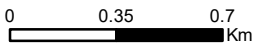
Source: Esri, Maxar, GeoEye, Earthstar Geographics, USDA, USGS, AeroGRID, IGN, and the GIS User Community



NARROMINE TO NARRABRI

Track overtopping locations 1% AEP with blockage

Appendix K - Figure 1.8



LEGEND

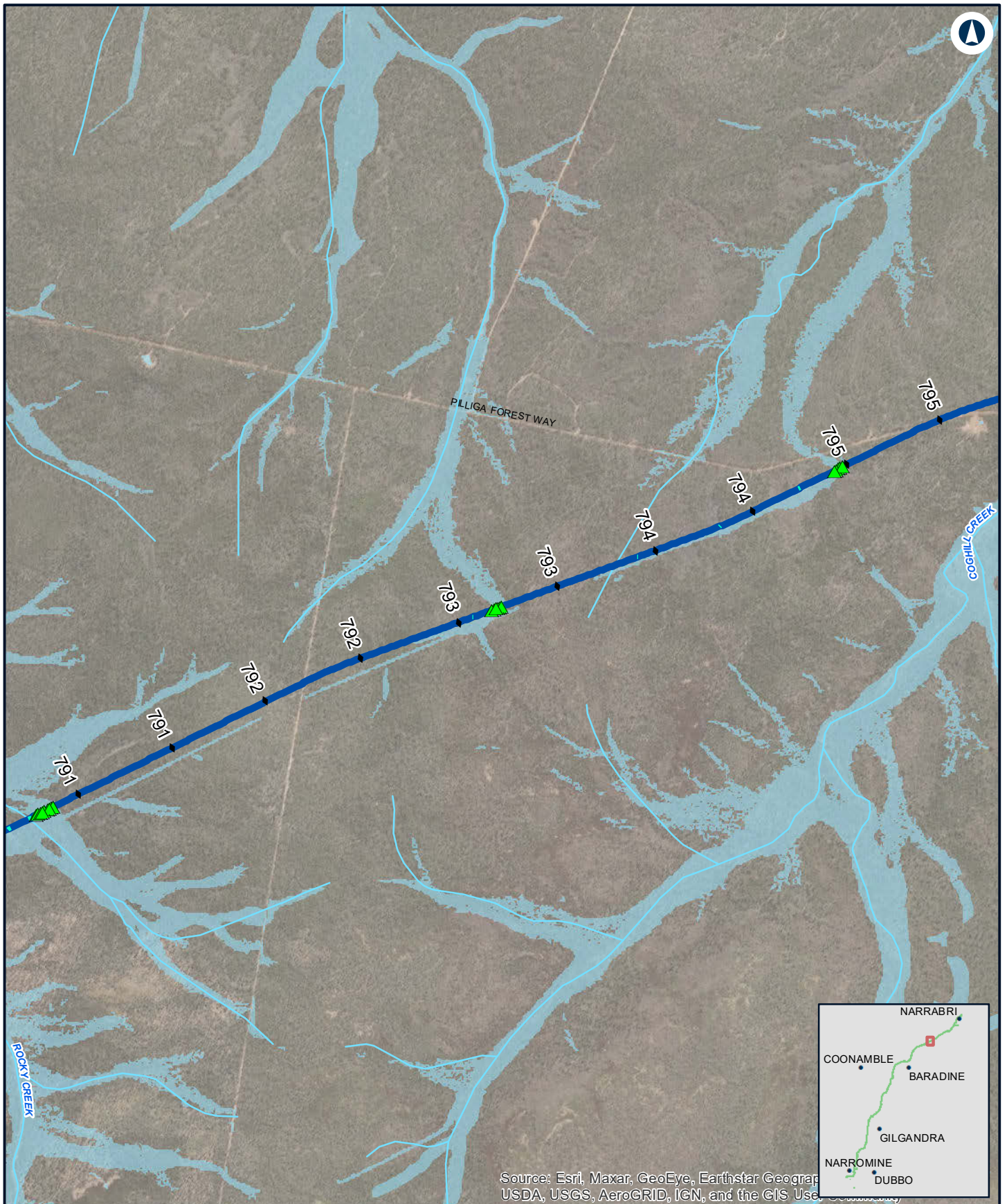
- ▲ Potential overtopping
- Alignment
- Bridge
- Culvert

Coordinate System: GDA 1994 MGA Zone 55
 ARTC makes no representation or warranty and assumes no duty of care or other responsibility to any party as to the completeness, accuracy or suitability of the information contained in this GIS map. The GIS map has been prepared from material provided to ARTC by an external source and ARTC has not taken any steps to verify the completeness, accuracy or suitability of that material.
 ARTC will not be responsible for any loss or damage suffered as a result of any person whatsoever placing reliance upon the information contained within this GIS map.

Date: 8/08/2022 Paper: A4
 Author: JacobsGHD Scale: 1:25,000
 Data Sources: Basemap layers: NSWSS;



The Australian Government is delivering Inland Rail through the Australian Rail Track Corporation (ARTC), in partnership with the private sector.



Source: Esri, Maxar, GeoEye, Earthstar Geographics, USDA, USGS, AeroGRID, IGN, and the GIS User Community



NARROMINE TO NARRABRI

Track overtopping locations 1% AEP with blockage

Appendix K - Figure 1.9

0 0.35 0.7
Km

LEGEND

- ▲ Potential overtopping
- Alignment
- Culvert

Coordinate System: GDA 1994 MGA Zone 55

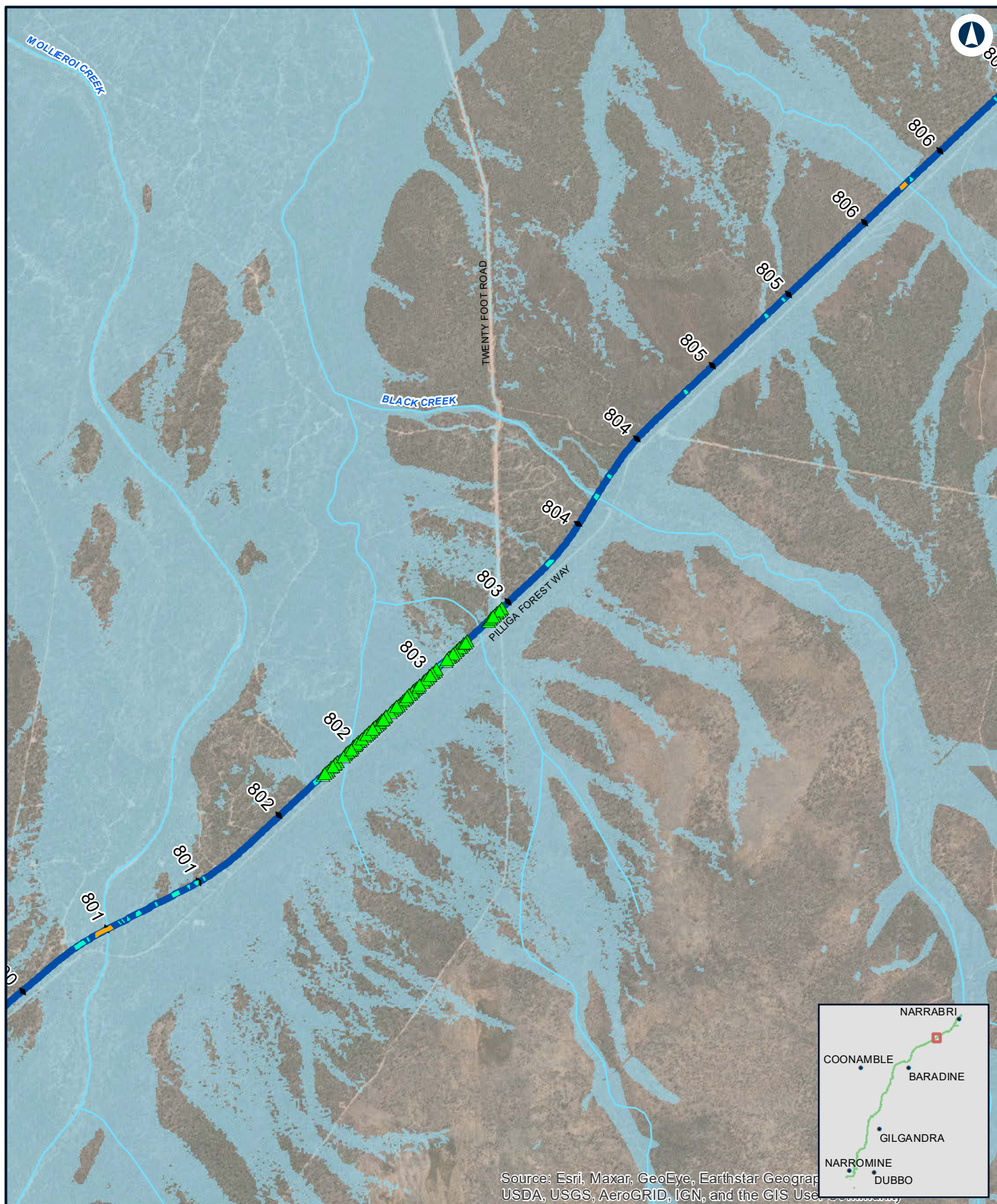
ARTC makes no representation or warranty and assumes no duty of care or other responsibility to any party as to the completeness, accuracy or suitability of the information contained in this GIS map. The GIS map has been prepared from material provided to ARTC by an external source and ARTC has not taken any steps to verify the completeness, accuracy or suitability of that material.

ARTC will not be responsible for any loss or damage suffered as a result of any person whatsoever placing reliance upon the information contained within this GIS map.

Date: 8/08/2022 Paper: A4
Author: JacobsGHD Scale: 1:25,000
Data Sources: Basemap layers: NSWSS;

INLAND RAIL **ARTC**

The Australian Government is delivering Inland Rail through the Australian Rail Track Corporation (ARTC), in partnership with the private sector.



NARROMINE TO NARRABRI

Track overtopping locations 1% AEP with blockage

Appendix K - Figure 1.10

0 0.35 0.7
Km

LEGEND

- ▲ Potential overtopping
- Alignment
- Bridge
- Culvert

Coordinate System: GDA 1994 MGA Zone 55

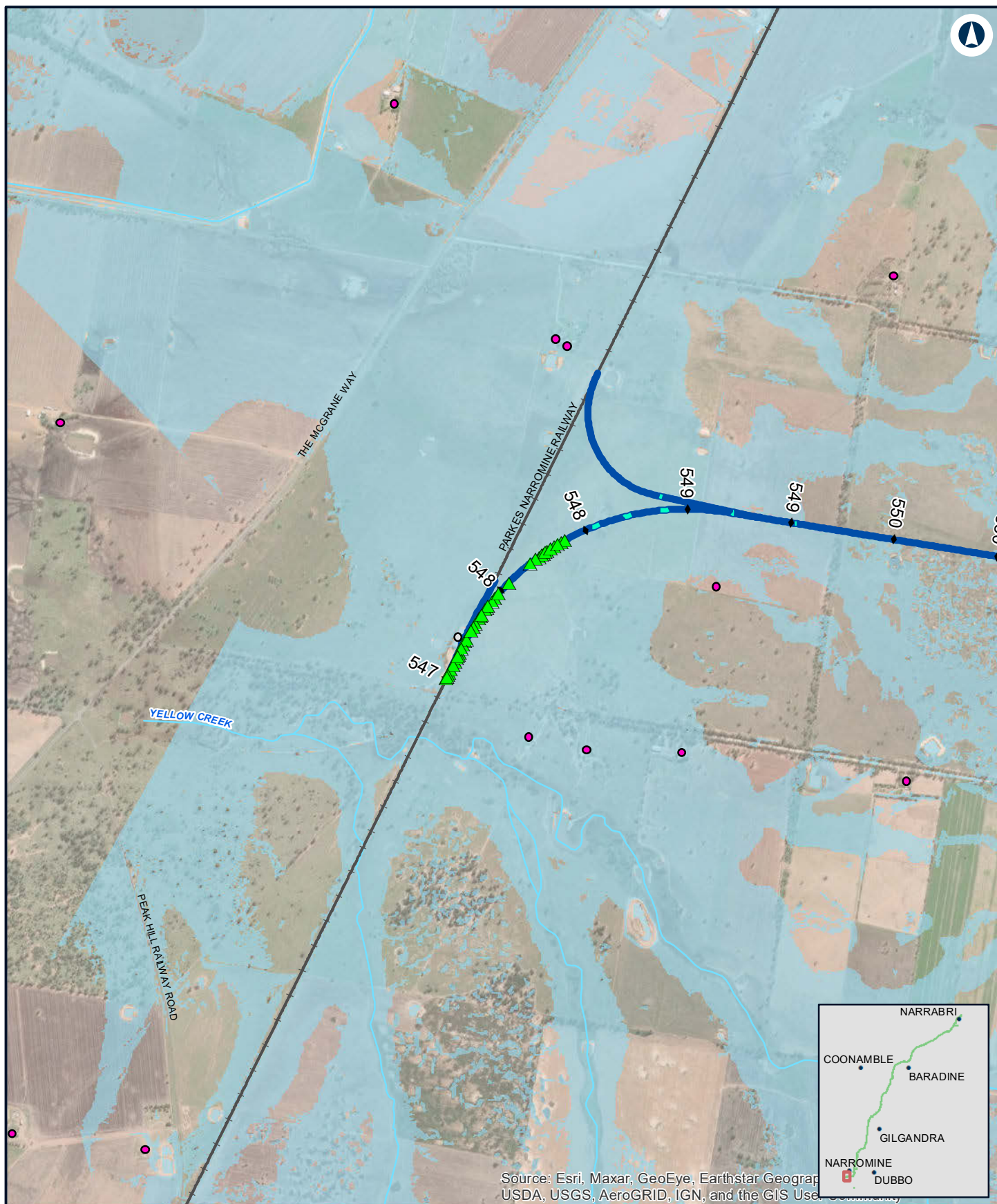
ARTC makes no representation or warranty and assumes no duty of care or other responsibility to any party as to the completeness, accuracy or suitability of the information contained in this GIS map. The GIS map has been prepared from material provided to ARTC by an external source and ARTC has not taken any steps to verify the completeness, accuracy or suitability of that material.

ARTC will not be responsible for any loss or damage suffered as a result of any person whatsoever placing reliance upon the information contained within this GIS map.

Date: 8/08/2022 Paper: A4
Author: JacobsGHD Scale: 1:25,000
Data Sources: Basemap layers: NSWSS;

INLAND RAIL **ARTC**

The Australian Government is delivering Inland Rail through the Australian Rail Track Corporation (ARTC), in partnership with the private sector.



NARROMINE TO NARRABRI

Track overtopping locations 0.2% AEP

Appendix K - Figure 2.1

0 0.35 0.7
Km

Coordinate System: GDA 1994 MGA Zone 55

ARTC makes no representation or warranty and assumes no duty of care or other responsibility to any party as to the completeness, accuracy or suitability of the information contained in this GIS map. The GIS map has been prepared from material provided to ARTC by an external source and ARTC has not taken any steps to verify the completeness, accuracy or suitability of that material.

ARTC will not be responsible for any loss or damage suffered as a result of any person whatsoever placing reliance upon the information contained within this GIS map.

Date: 8/08/2022 Paper: A4
Author: JacobsGHD Scale: 1:25,000
Data Sources: Basemap layers: NSWSS;

LEGEND

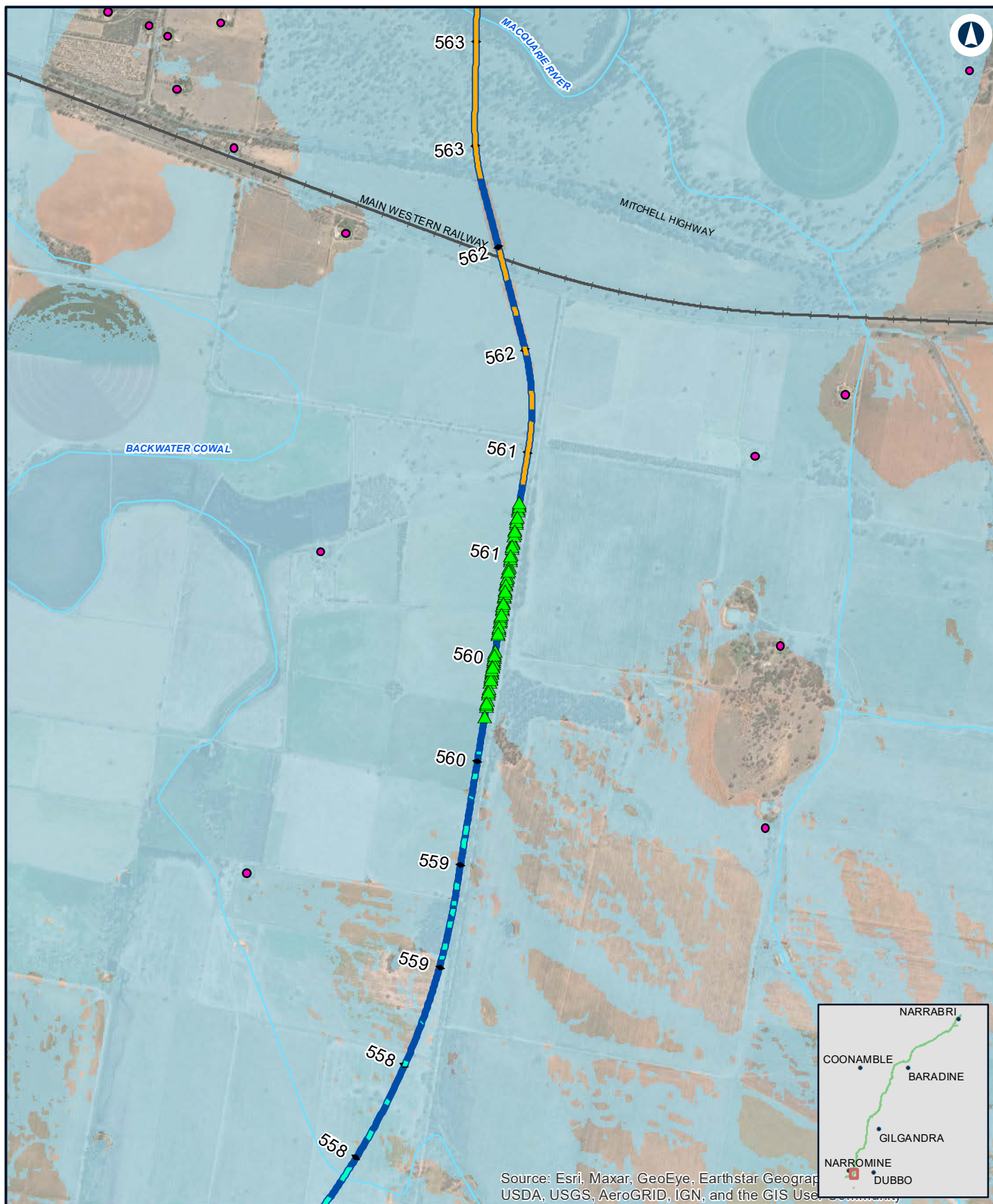
Structure type

- Commercial/Industrial
- Residential

- ▲ Potential overtopping
- Alignment
- Culvert
- Railway
- 0.2% AEP extent

INLAND RAIL **ARTC**

The Australian Government is delivering Inland Rail through the Australian Rail Track Corporation (ARTC), in partnership with the private sector.



NARROMINE TO NARRABRI

Track overtopping locations 0.2% AEP

Appendix K - Figure 2.2

0 0.35 0.7
Km

Coordinate System: GDA 1994 MGA Zone 55

ARTC makes no representation or warranty and assumes no duty of care or other responsibility to any party as to the completeness, accuracy or suitability of the information contained in this GIS map. The GIS map has been prepared from material provided to ARTC by an external source and ARTC has not taken any steps to verify the completeness, accuracy or suitability of that material. ARTC will not be responsible for any loss or damage suffered as a result of any person whatsoever placing reliance upon the information contained within this GIS map.

Date: 8/08/2022
Author: JacobsGHD
Data Sources: Basemap layers: NSWSS;

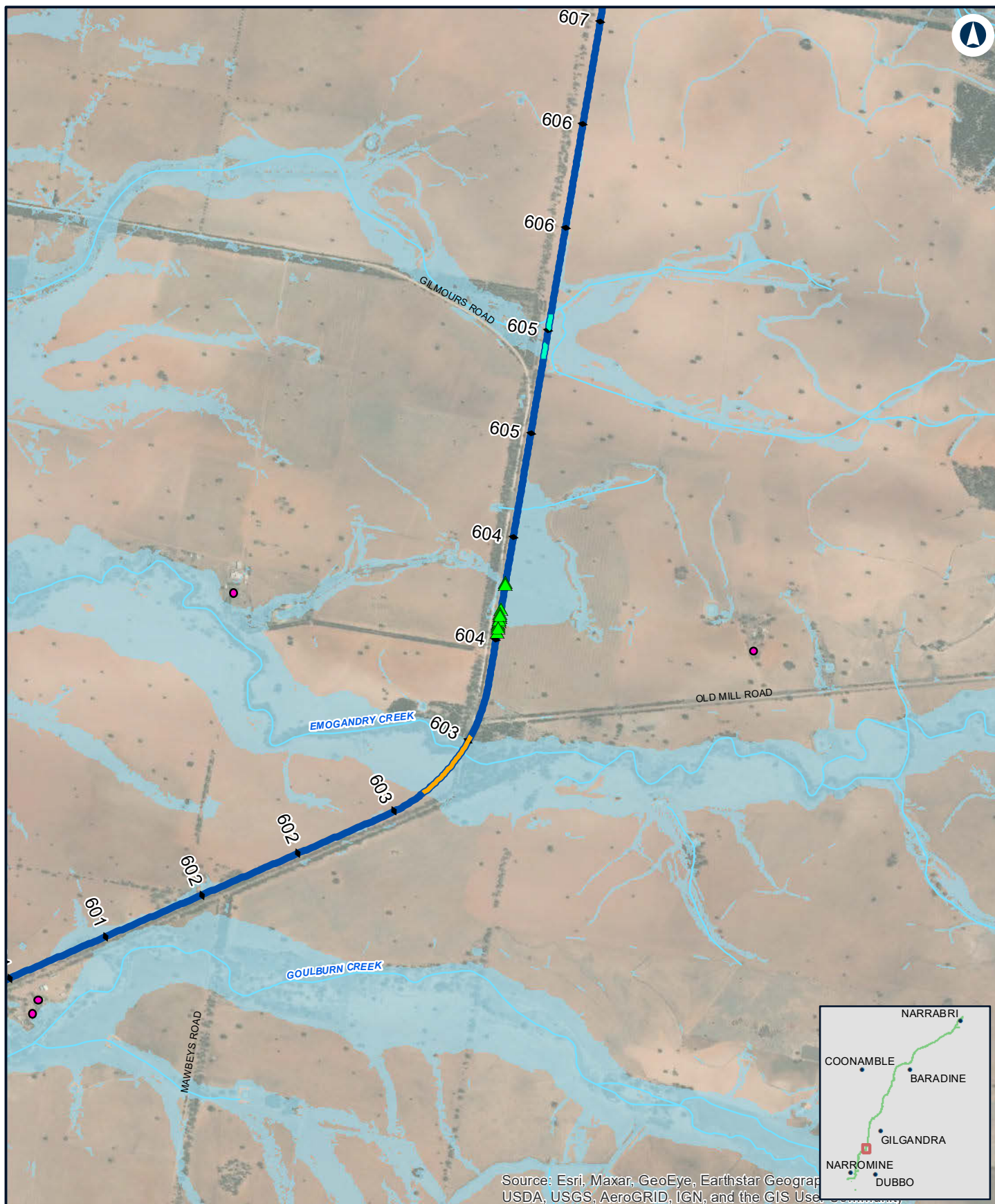
Paper: A4
Scale: 1:25,000

LEGEND

- Structure type**
- ▲ Potential overtopping
 - Residential
 - Alignment
 - Bridge
 - Culvert
 - Railway
 - 0.2% AEP extent

INLAND RAIL **ARTC**

The Australian Government is delivering Inland Rail through the Australian Rail Track Corporation (ARTC), in partnership with the private sector.



NARROMINE TO NARRABRI

Track overtopping locations 0.2% AEP

Appendix K - Figure 2.3

0 0.35 0.7
Km

Coordinate System: GDA 1994 MGA Zone 55

ARTC makes no representation or warranty and assumes no duty of care or other responsibility to any party as to the completeness, accuracy or suitability of the information contained in this GIS map. The GIS map has been prepared from material provided to ARTC by an external source and ARTC has not taken any steps to verify the completeness, accuracy or suitability of that material.

ARTC will not be responsible for any loss or damage suffered as a result of any person whatsoever placing reliance upon the information contained within this GIS map.

Date: 8/08/2022 Paper: A4
Author: JacobsGHD Scale: 1:25,000
Data Sources: Basemap layers: NSWSS;

LEGEND

- | | |
|-----------------------|-----------------------|
| Structure type | Potential overtopping |
| Residential | Alignment |
| | Bridge |
| | Culvert |
| | 0.2% AEP extent |

INLAND RAIL **ARTC**

The Australian Government is delivering Inland Rail through the Australian Rail Track Corporation (ARTC), in partnership with the private sector.



NARROMINE TO NARRABRI

Track overtopping locations 0.2% AEP

Appendix K - Figure 2.4

0 0.35 0.7
Km

Coordinate System: GDA 1994 MGA Zone 55

ARTC makes no representation or warranty and assumes no duty of care or other responsibility to any party as to the completeness, accuracy or suitability of the information contained in this GIS map. The GIS map has been prepared from material provided to ARTC by an external source and ARTC has not taken any steps to verify the completeness, accuracy or suitability of that material.

ARTC will not be responsible for any loss or damage suffered as a result of any person whatsoever placing reliance upon the information contained within this GIS map.

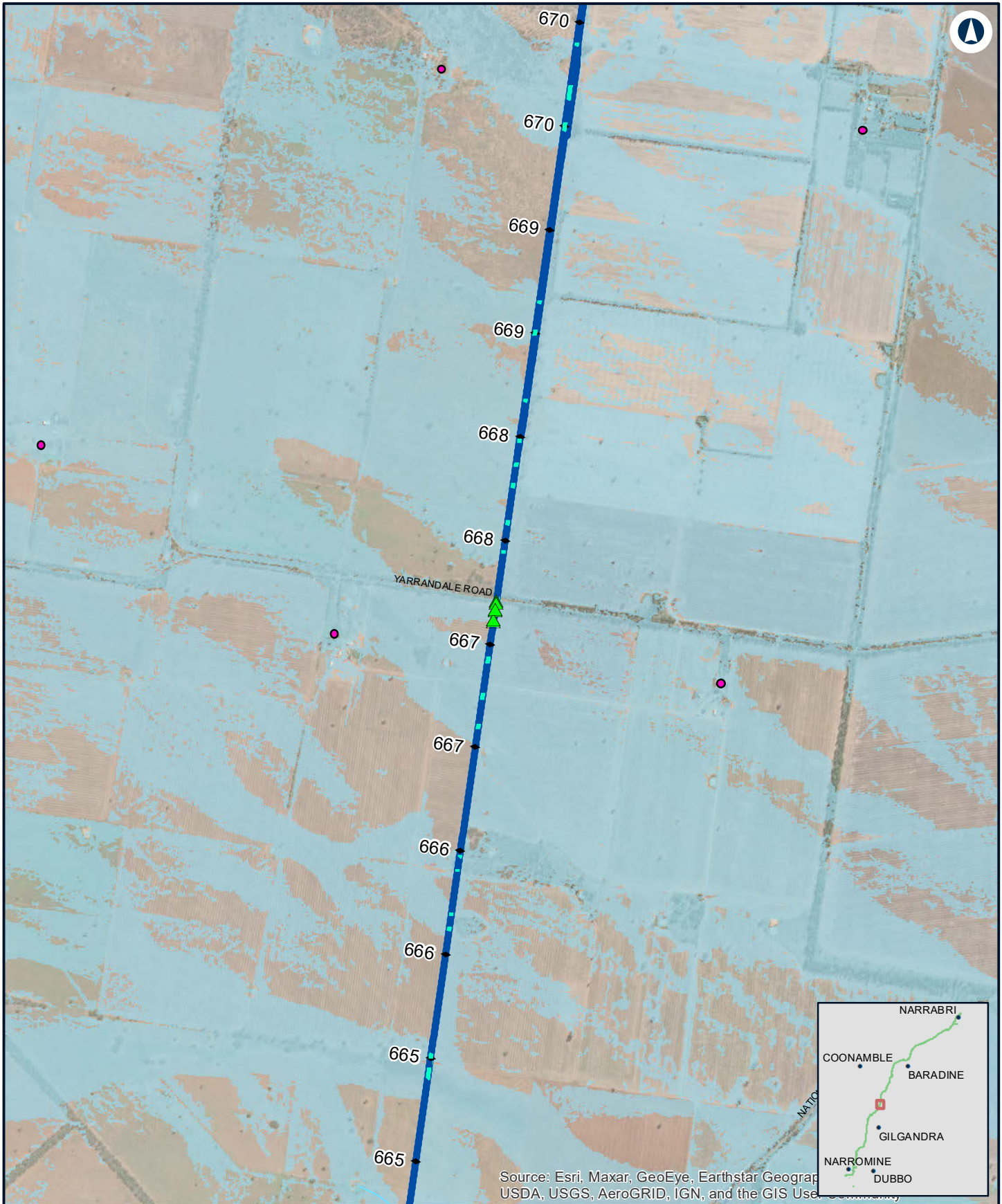
Date: 8/08/2022 Paper: A4
Author: JacobsGHD Scale: 1:25,000
Data Sources: Basemap layers: NSWSS;

LEGEND

- Structure type**
- ▲ Potential overtopping
 - Residential
 - Alignment
 - Bridge
 - 0.2% AEP extent

INLAND RAIL **ARTC**

The Australian Government is delivering Inland Rail through the Australian Rail Track Corporation (ARTC), in partnership with the private sector.

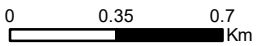


Source: Esri, Maxar, GeoEye, Earthstar Geographics, CNR Aero, IGN, and the GIS User Community

NARROMINE TO NARRABRI

Track overtopping locations 0.2% AEP

Appendix K - Figure 2.5



Coordinate System: GDA 1994 MGA Zone 55
 ARTC makes no representation or warranty and assumes no duty of care or other responsibility to any party as to the completeness, accuracy or suitability of the information contained in this GIS map. The GIS map has been prepared from material provided to ARTC by an external source and ARTC has not taken any steps to verify the completeness, accuracy or suitability of that material.
 ARTC will not be responsible for any loss or damage suffered as a result of any person whatsoever placing reliance upon the information contained within this GIS map.

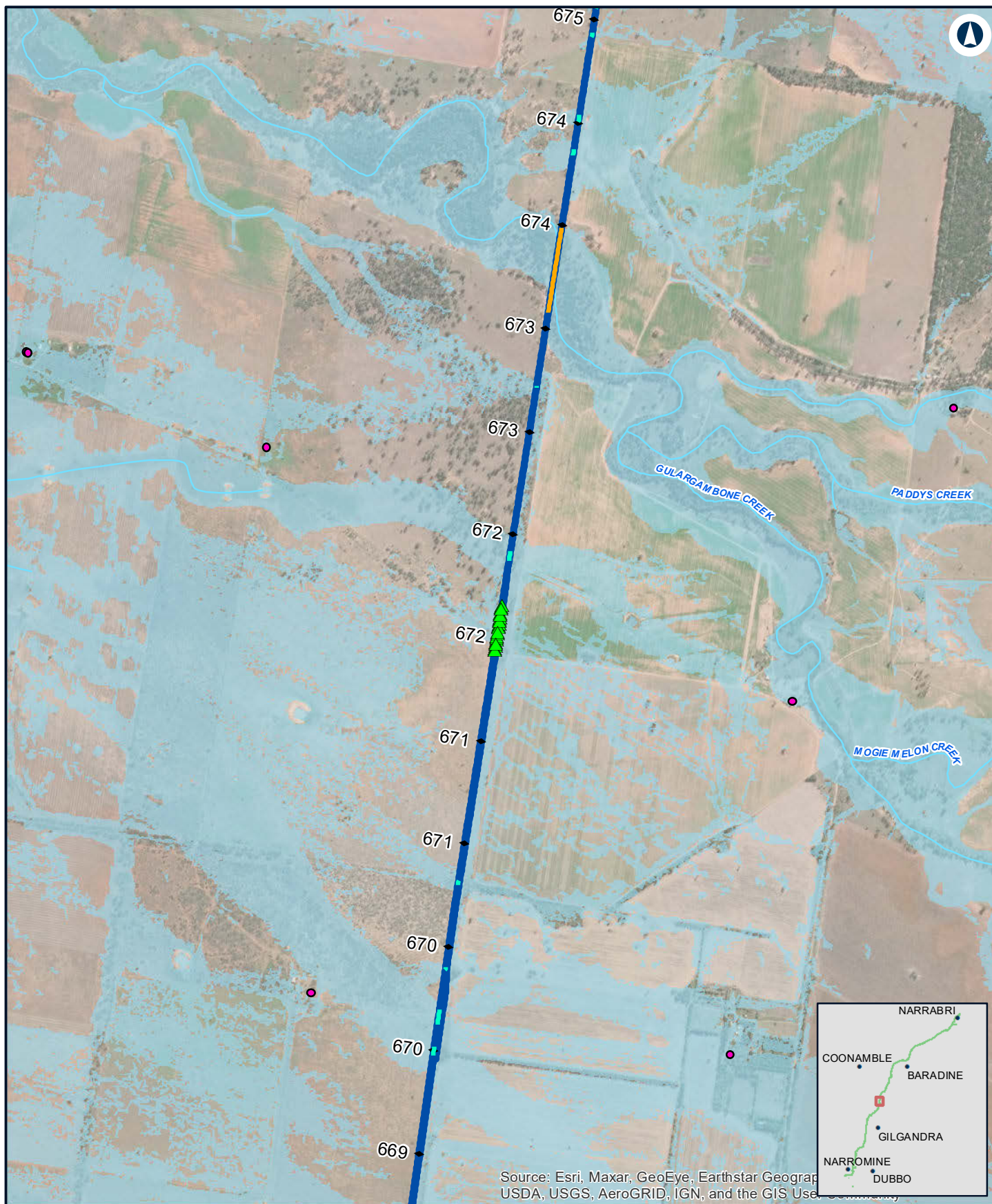
Date: 8/08/2022 Paper: A4
 Author: JacobsGHD Scale: 1:25,000
 Data Sources: Basemap layers: NSWSS;

LEGEND

- | | |
|-----------------------|-----------------------|
| Structure type | Potential overtopping |
| Residential | Alignment |
| | Culvert |
| | 0.2% AEP extent |



The Australian Government is delivering Inland Rail through the Australian Rail Track Corporation (ARTC), in partnership with the private sector.



NARROMINE TO NARRABRI

Track overtopping locations 0.2% AEP

Appendix K - Figure 2.6

0 0.35 0.7
Km

Coordinate System: GDA 1994 MGA Zone 55

ARTC makes no representation or warranty and assumes no duty of care or other responsibility to any party as to the completeness, accuracy or suitability of the information contained in this GIS map. The GIS map has been prepared from material provided to ARTC by an external source and ARTC has not taken any steps to verify the completeness, accuracy or suitability of that material.

ARTC will not be responsible for any loss or damage suffered as a result of any person whatsoever placing reliance upon the information contained within this GIS map.

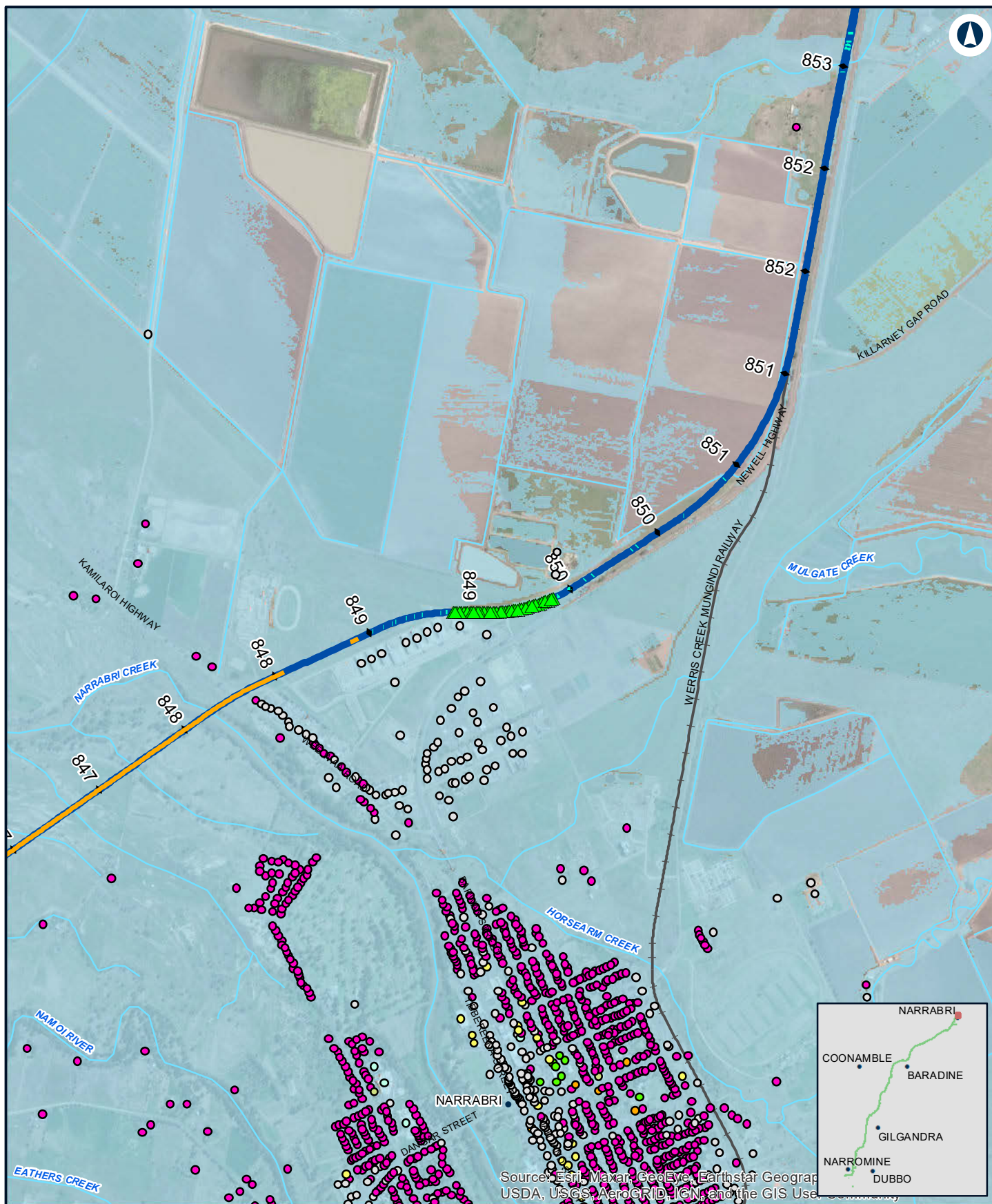
Date: 8/08/2022 Paper: A4
Author: JacobsGHD Scale: 1:25,000
Data Sources: Basemap layers: NSWSS;

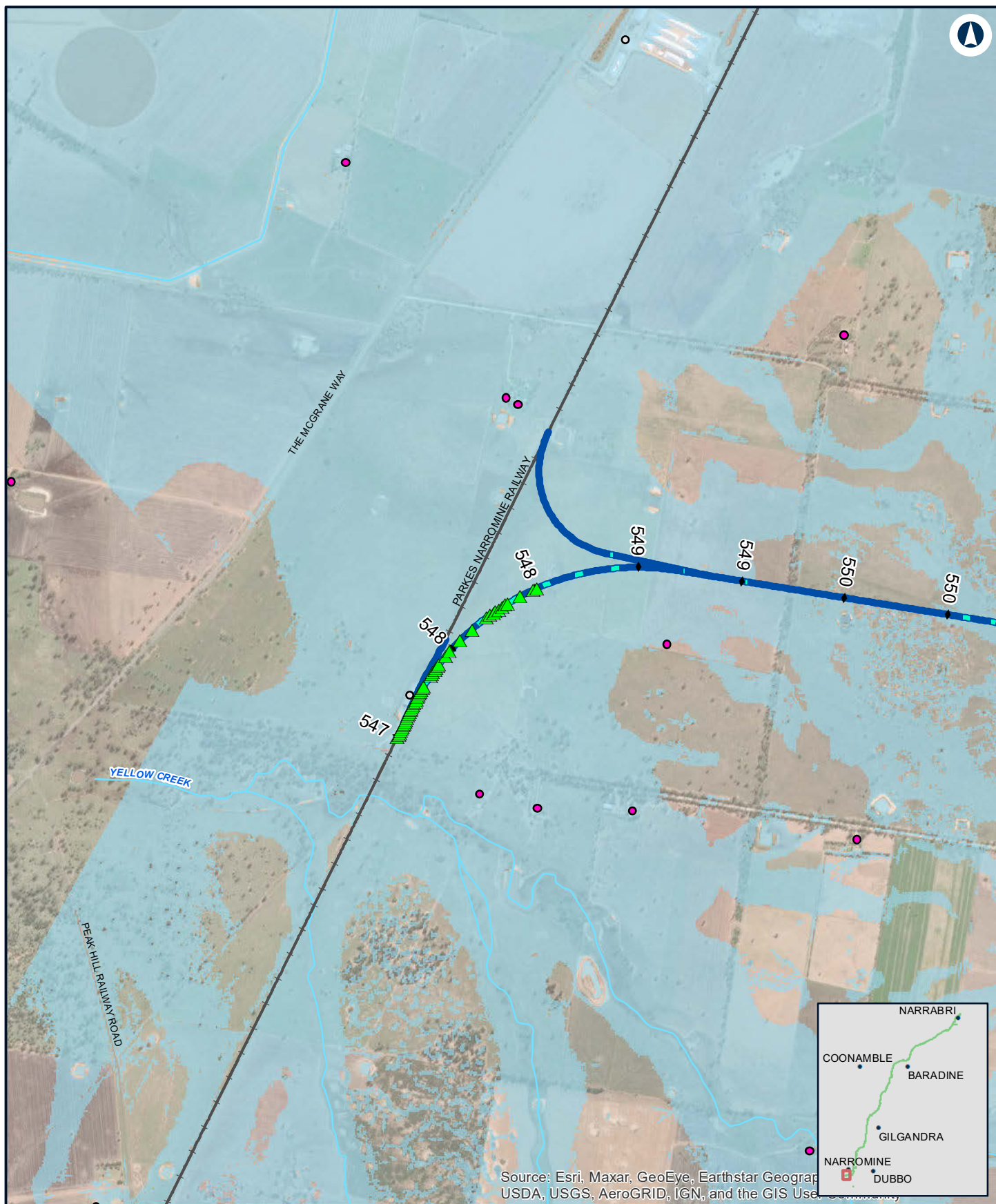
LEGEND

- | | |
|--|-----------------------|
| | Potential overtopping |
| | Residential |
| | Alignment |
| | Bridge |
| | Culvert |
| | 0.2% AEP extent |

INLAND RAIL **ARTC**

The Australian Government is delivering Inland Rail through the Australian Rail Track Corporation (ARTC), in partnership with the private sector.





NARROMINE TO NARRABRI

Track overtopping locations 0.05% AEP

Appendix K - Figure 3.1

0 0.35 0.7
Km

Coordinate System: GDA 1994 MGA Zone 55

ARTC makes no representation or warranty and assumes no duty of care or other responsibility to any party as to the completeness, accuracy or suitability of the information contained in this GIS map. The GIS map has been prepared from material provided to ARTC by an external source and ARTC has not taken any steps to verify the completeness, accuracy or suitability of that material.

ARTC will not be responsible for any loss or damage suffered as a result of any person whatsoever placing reliance upon the information contained within this GIS map.

Date: 9/08/2022 Paper: A4
Author: JacobsGHD Scale: 1:25,000
Data Sources: Basemap layers: NSWSS;

LEGEND

Structure type



Commercial/Industrial



Residential



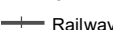
Potential overtopping



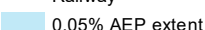
Alignment



Culvert



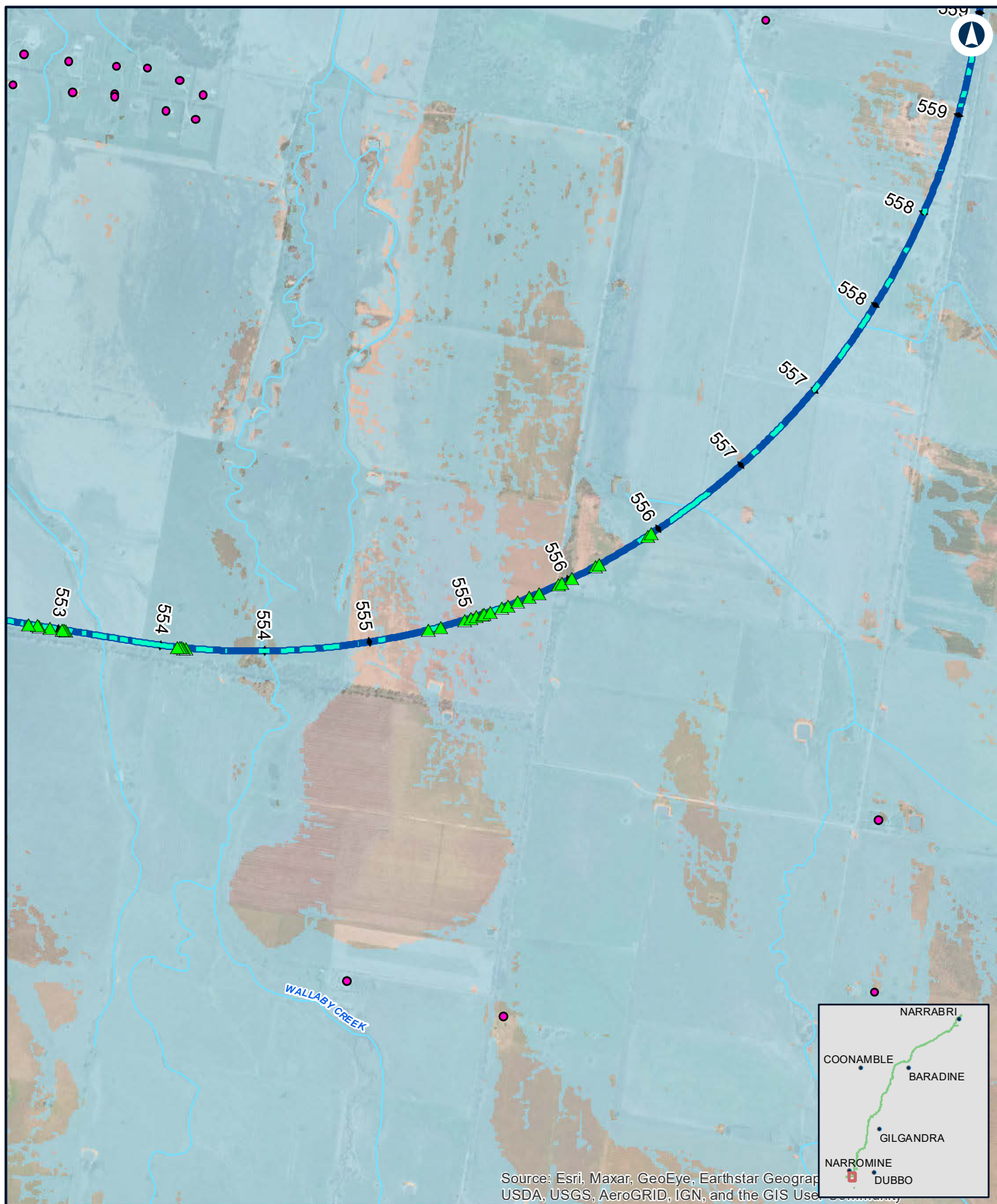
Railway



0.05% AEP extent

INLAND RAIL **ARTC**

The Australian Government is delivering Inland Rail through the Australian Rail Track Corporation (ARTC), in partnership with the private sector.



NARROMINE TO NARRABRI

Track overtopping locations 0.05% AEP

Appendix K - Figure 3.2

0 0.35 0.7
Km

Coordinate System: GDA 1994 MGA Zone 55

ARTC makes no representation or warranty and assumes no duty of care or other responsibility to any party as to the completeness, accuracy or suitability of the information contained in this GIS map. The GIS map has been prepared from material provided to ARTC by an external source and ARTC has not taken any steps to verify the completeness, accuracy or suitability of that material.

ARTC will not be responsible for any loss or damage suffered as a result of any person whatsoever placing reliance upon the information contained within this GIS map.

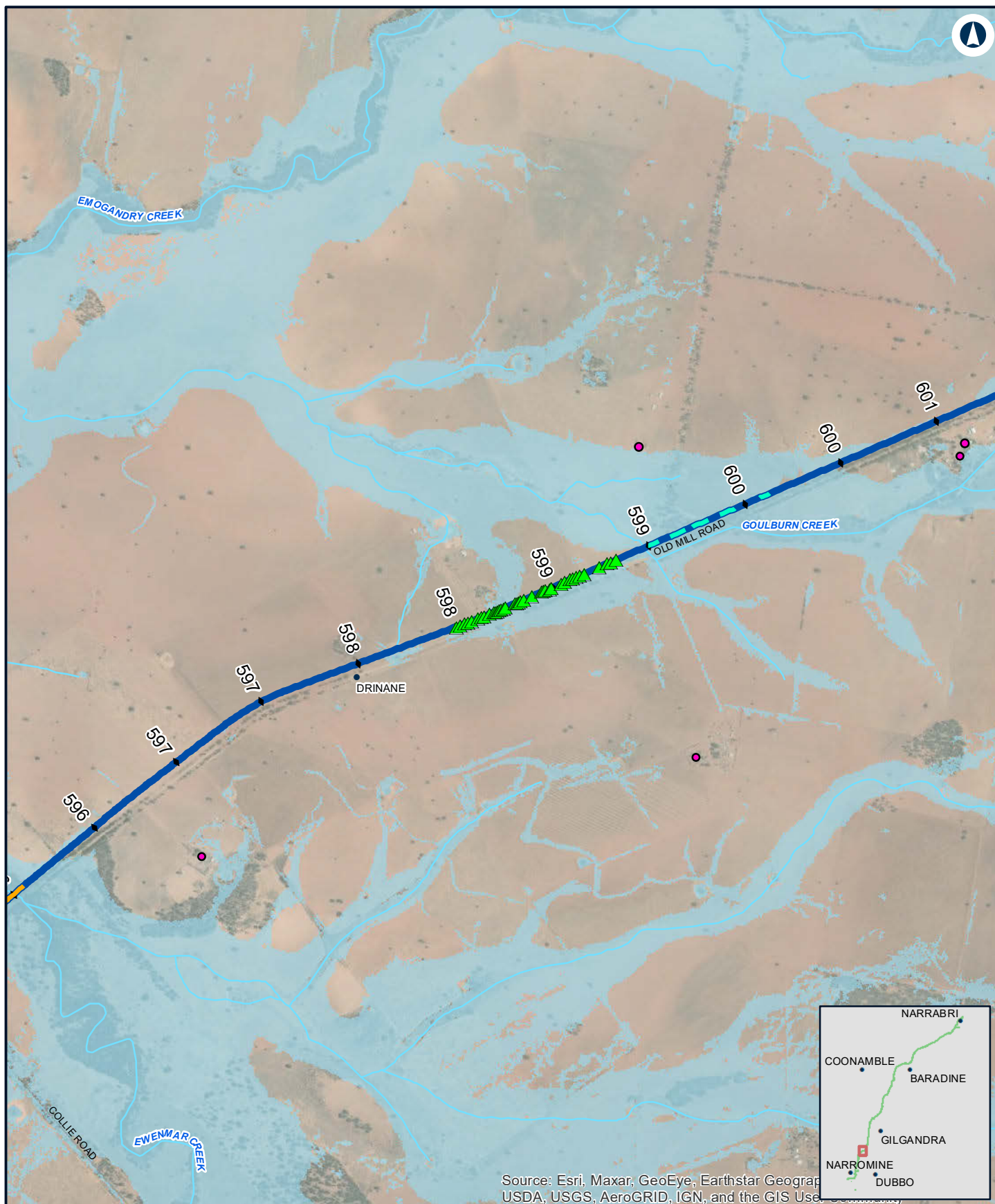
Date: 9/08/2022 Paper: A4
Author: JacobsGHD Scale: 1:25,000
Data Sources: Basemap layers: NSWSS;

LEGEND

- | | |
|-----------------------|-----------------------|
| Structure type | Potential overtopping |
| Residential | Alignment |
| | Culvert |
| | 0.05% AEP extent |

INLAND RAIL **ARTC**

The Australian Government is delivering Inland Rail through the Australian Rail Track Corporation (ARTC), in partnership with the private sector.



NARROMINE TO NARRABRI

Track overtopping locations 0.05% AEP

Appendix K - Figure 3.3

0 0.35 0.7
Km

Coordinate System: GDA 1994 MGA Zone 55

ARTC makes no representation or warranty and assumes no duty of care or other responsibility to any party as to the completeness, accuracy or suitability of the information contained in this GIS map. The GIS map has been prepared from material provided to ARTC by an external source and ARTC has not taken any steps to verify the completeness, accuracy or suitability of that material.

ARTC will not be responsible for any loss or damage suffered as a result of any person whatsoever placing reliance upon the information contained within this GIS map.

Date: 9/08/2022
Author: JacobsGHD
Data Sources: Basemap layers: NSWSS;

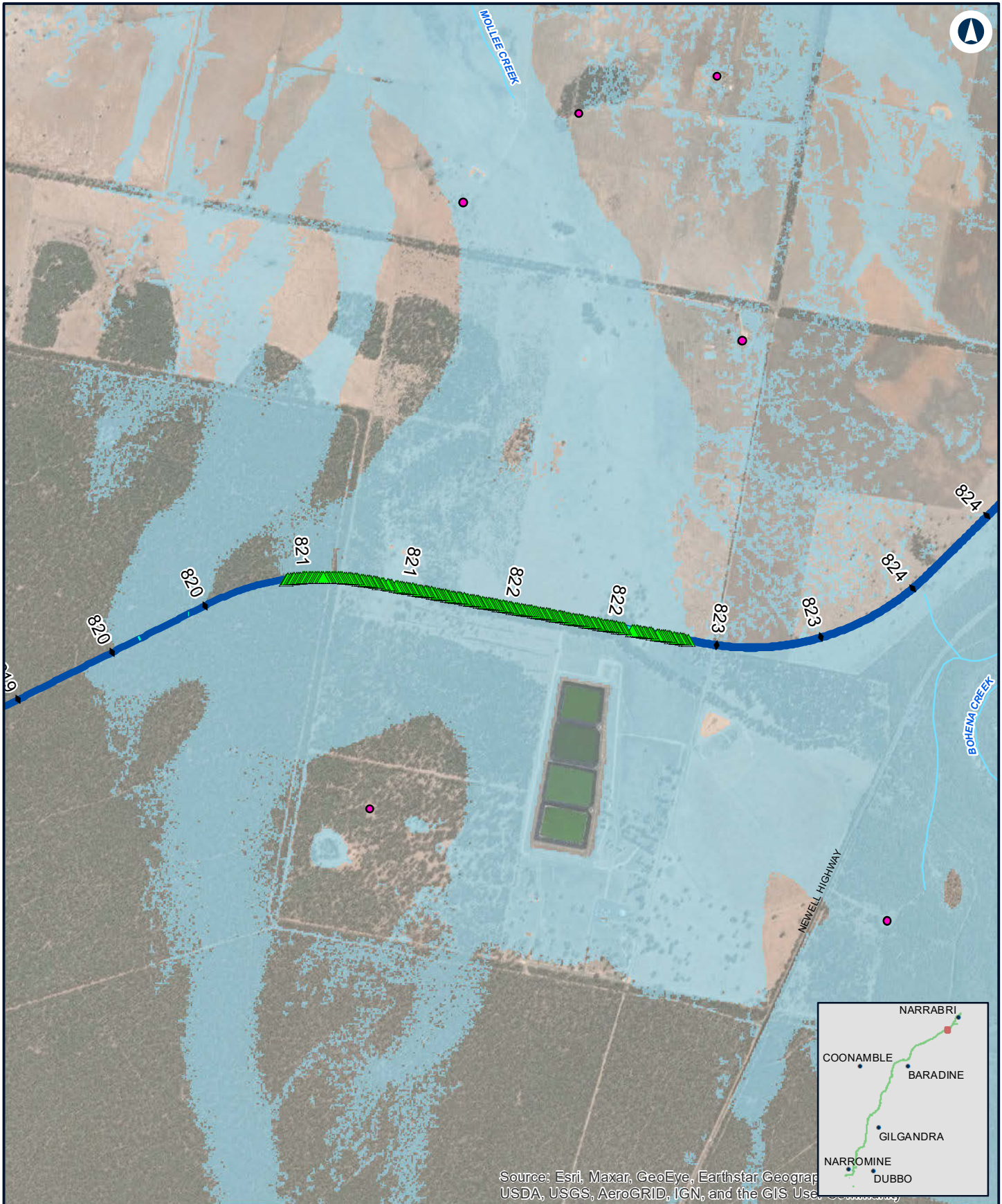
Paper: A4
Scale: 1:25,000

LEGEND

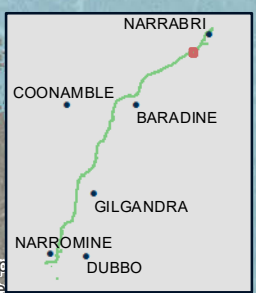
- | | |
|-----------------------|-----------------------|
| Structure type | Potential overtopping |
| Residential | Alignment |
| | Bridge |
| | Culvert |
| | 0.05% AEP extent |

INLAND RAIL **ARTC**

The Australian Government is delivering Inland Rail through the Australian Rail Track Corporation (ARTC), in partnership with the private sector.



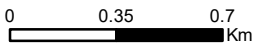
Source: Esri, Maxar, GeoEye, Earthstar Geographics, USDA, USGS, AeroGRID, IGN, and the GIS User Community



NARROMINE TO NARRABRI

Track overtopping locations 0.05% AEP

Appendix K - Figure 3.4



Coordinate System: GDA 1994 MGA Zone 55
 ARTC makes no representation or warranty and assumes no duty of care or other responsibility to any party as to the completeness, accuracy or suitability of the information contained in this GIS map. The GIS map has been prepared from material provided to ARTC by an external source and ARTC has not taken any steps to verify the completeness, accuracy or suitability of that material.
 ARTC will not be responsible for any loss or damage suffered as a result of any person whatsoever placing reliance upon the information contained within this GIS map.

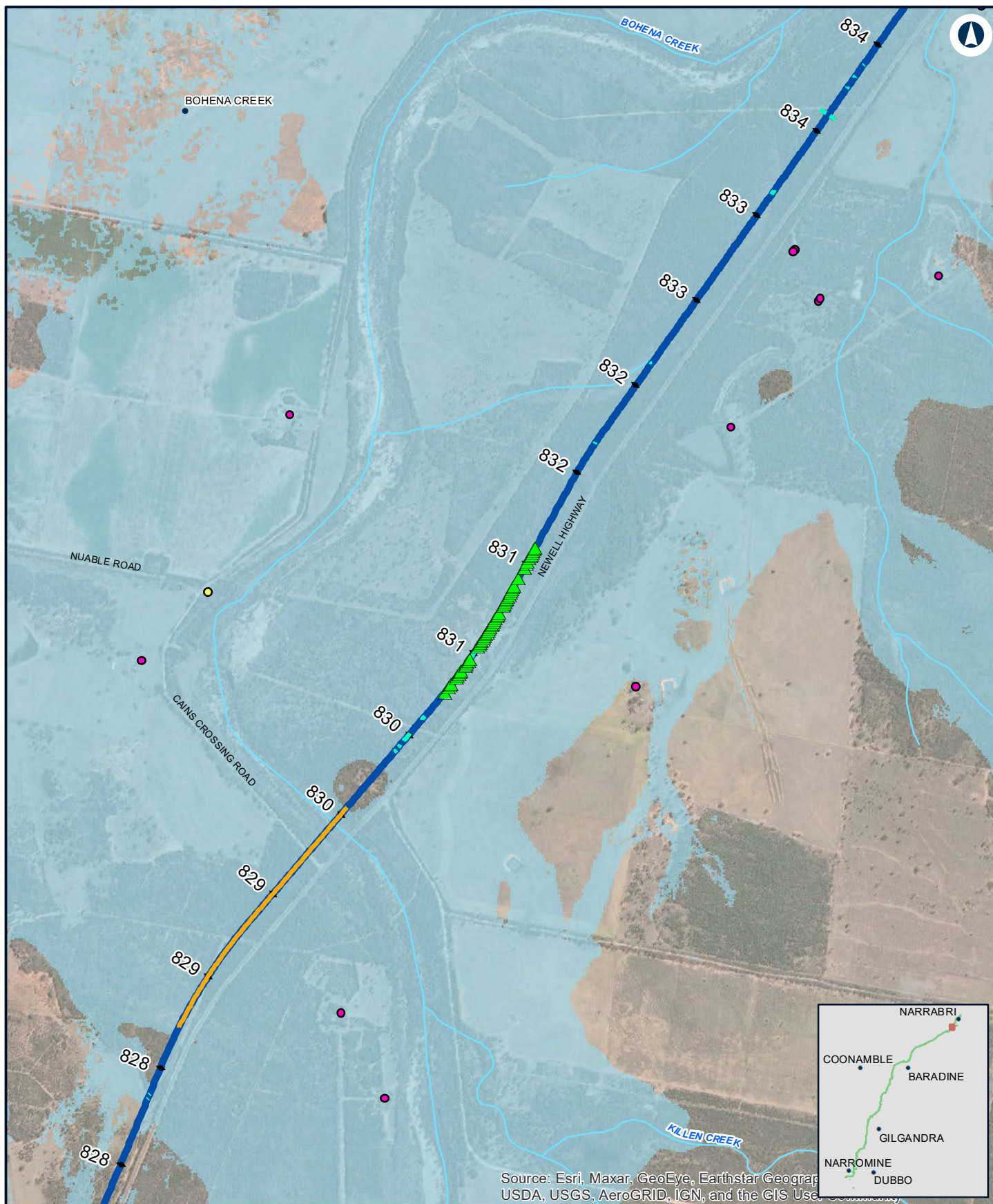
Date: 9/08/2022 Paper: A4
 Author: JacobsGHD Scale: 1:25,000
 Data Sources: Basemap layers: NSWSS;

LEGEND

- | | |
|-----------------------|-----------------------|
| Structure type | Potential overtopping |
| Residential | Alignment |
| | Culvert |
| | 0.05% AEP extent |



The Australian Government is delivering Inland Rail through the Australian Rail Track Corporation (ARTC), in partnership with the private sector.



NARROMINE TO NARRABRI

Track overtopping locations 0.05% AEP

Appendix K - Figure 3.5

0 0.35 0.7
Km

Coordinate System: GDA 1994 MGA Zone 55

ARTC makes no representation or warranty and assumes no duty of care or other responsibility to any party as to the completeness, accuracy or suitability of the information contained in this GIS map. The GIS map has been prepared from material provided to ARTC by an external source and ARTC has not taken any steps to verify the completeness, accuracy or suitability of that material.

ARTC will not be responsible for any loss or damage suffered as a result of any person whatsoever placing reliance upon the information contained within this GIS map.

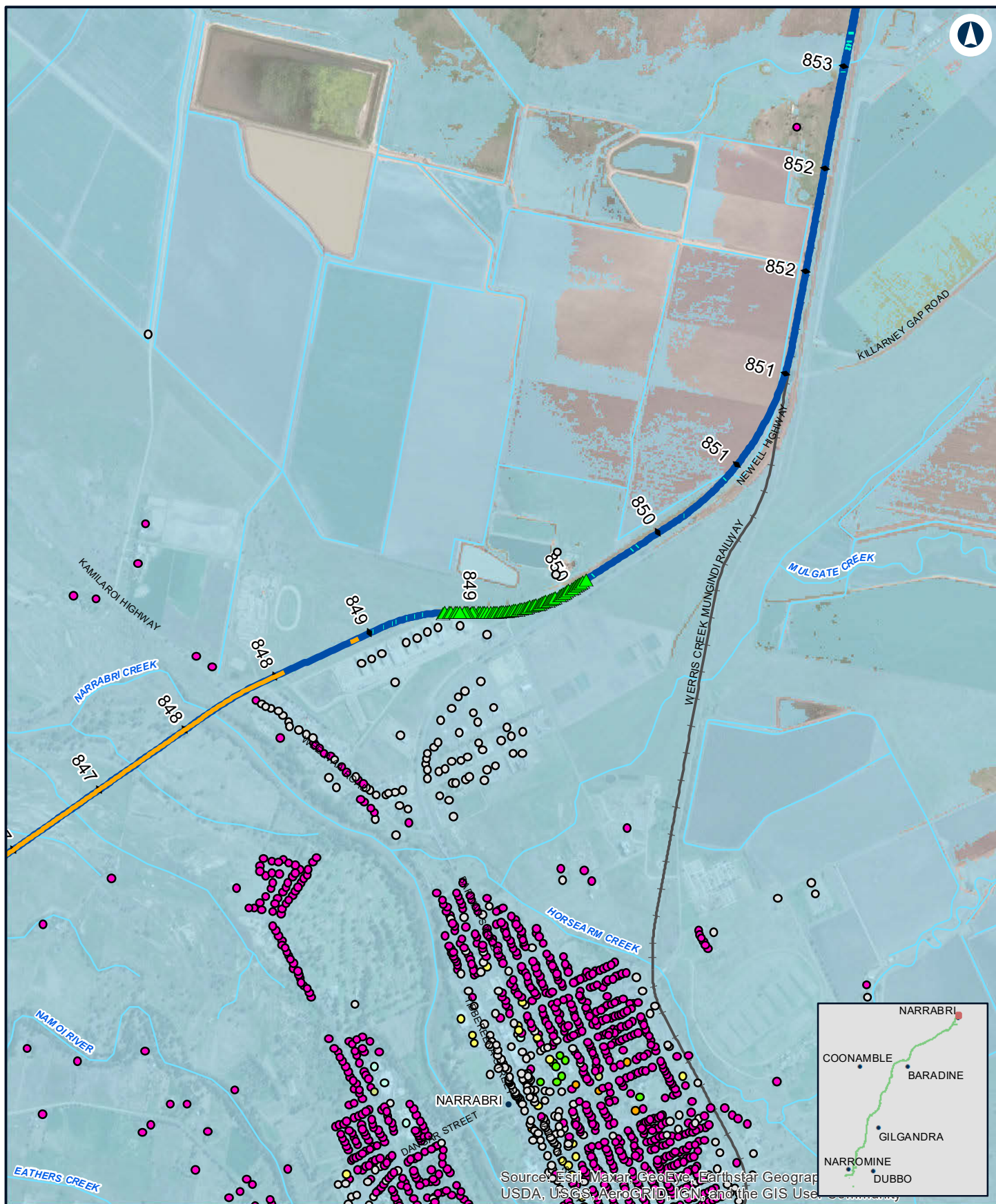
Date: 9/08/2022 Paper: A4
Author: JacobsGHD Scale: 1:25,000
Data Sources: Basemap layers: NSWSS;

LEGEND

- | | |
|-----------------------|-----------------------|
| Structure type | Potential overtopping |
| Community | Alignment |
| Residential | Bridge |
| | Culvert |
| | 0.05% AEP extent |

INLAND RAIL **ARTC**

The Australian Government is delivering Inland Rail through the Australian Rail Track Corporation (ARTC), in partnership with the private sector.



NARROMINE TO NARRABRI

Track overtopping locations 0.05% AEP

Appendix K - Figure 3.6

0 0.35 0.7
Km

Coordinate System: GDA 1994 MGA Zone 55

ARTC makes no representation or warranty and assumes no duty of care or other responsibility to any party as to the completeness, accuracy or suitability of the information contained in this GIS map. The GIS map has been prepared from material provided to ARTC by an external source and ARTC has not taken any steps to verify the completeness, accuracy or suitability of that material.

ARTC will not be responsible for any loss or damage suffered as a result of any person whatsoever placing reliance upon the information contained within this GIS map.

Date: 9/08/2022
Author: JacobsGHD
Data Sources: Basemap layers: NSWSS;

Paper: A4
Scale: 1:25,000

LEGEND

Structure type

- Child care facility
- Commercial/Industrial
- Community
- Educational
- Health
- Residential
- Worship

▲ Potential overtopping

— Alignment

— Bridge

— Culvert

— Railway

0.05% AEP extent

INLAND RAIL **ARTC**

The Australian Government is delivering Inland Rail through the Australian Rail Track Corporation (ARTC), in partnership with the private sector.