



4 October 2019

David Kitto Executive
Director
Department of Planning, Industry and Environment
320 Pitt Street
SYDNEY NSW 2000

Dear David,

RE: SSI 9208: Exploratory Works for Snowy 2.0 – Amendment to the hours of operation on upper Lobs Hole Ravine Road

Snowy Hydro request an amendment to the hours of operation on Upper Lobs Hole Ravine Road.

In accordance with condition 46(b) of the Minister's approval (SSI 9208), Snowy Hydro is currently restricted to the hours of operation from 7am to 6pm on Lobs Hole Ravine Road. This control has been reflected in the approved Traffic Management Plan (REV 0 - 02/04/2019) and successfully implemented since commencing Exploratory Work in March 2019.

Following the Biodiversity Development Assessment Report (BDAR) prepared for the Exploratory Works EIS, these restricted operating hours on Upper Lobs Hole Ravine Road were primarily implemented to minimise the risk of vehicle impacts to Smoky Mouse (*Pseudomys fumeus*) during night-time hours. However, given the longer daylight hours in the coming months, Snowy Hydro would like to request the conditions of approval are revised to amend these hours of operation to 7am to 7pm in October 2019 and 6am to 8pm from 1 November 2019 to 1 March 2020. These hours are consistent with the outcomes and recommendations of the BDAR submitted as part of the Exploratory Works EIS. Outside of these months, the hours of operation would remain 7am to 6pm.

Snowy Hydro has consulted the Biodiversity and Conservation Division (BCD) regarding this proposed amendment. The key concern raised by BCD was the potential for the increased operating hours to coincide with periods of increased activity for the species. An analysis of data collected from camera surveys undertaken for Snowy 2.0 EIS investigations was completed to identify the periods of increased activity for Smoky Mouse. This analysis was provided to BCD by email and is provided in **Attachment 1**.

The analysis of camera survey data demonstrates that the proposed amended operating hours on Upper Lobs Hole Ravine Road will continue to avoid periods of increased activity for Smoky Mouse.

Any such changes to operating hours on Upper Lobs Hole Ravine Road would be reflected in an updated revision of our Traffic Management Plan which would subsequently be submitted for approval by the Department.

In addition, following further discussions with the National Parks Association of NSW (NPA) it is understood that the NPA submission on Modification 1 should be considered an objection rather than a comment on the proposed works as was described in the Response to Submissions.

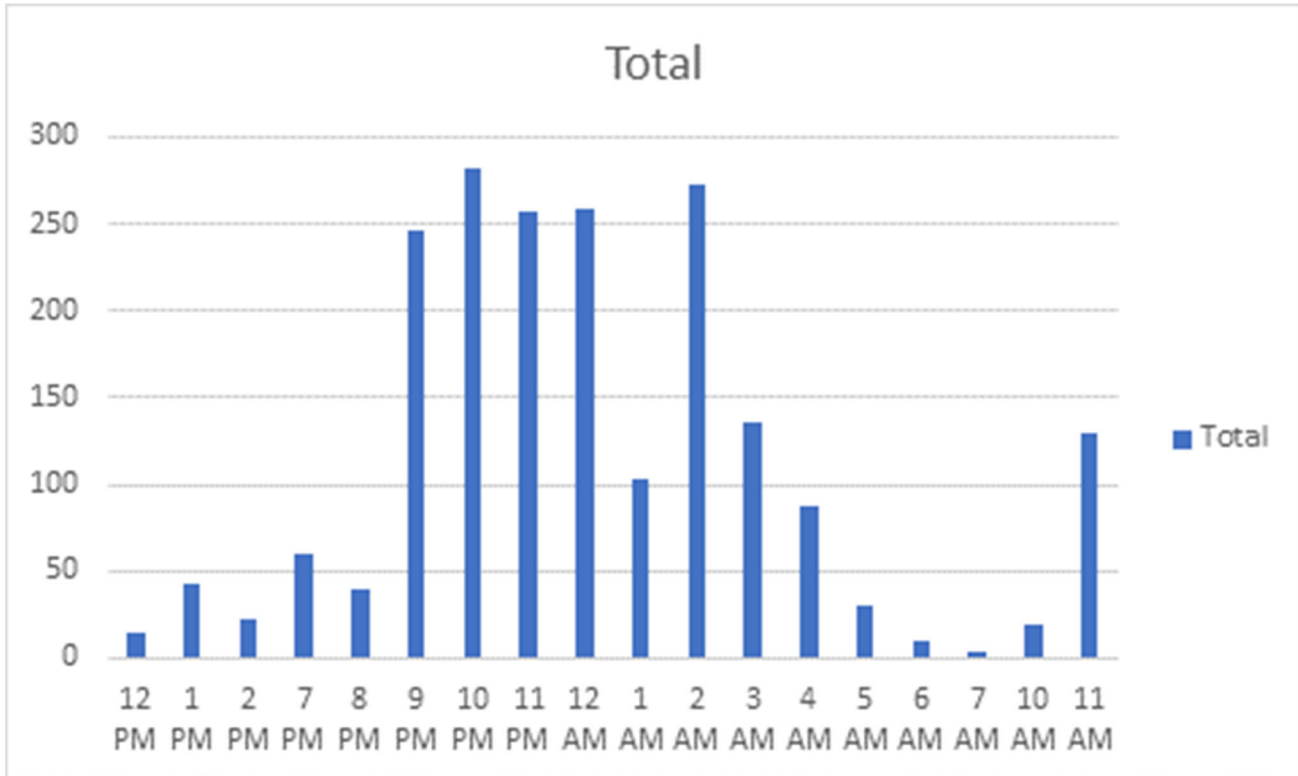
Should you require any further information regarding this matter please contact Chris Buscall on 0407 303 240.

Yours Faithfully

A handwritten signature in blue ink, appearing to read "Kieran Cusack", written over a light blue grid background.

Kieran Cusack
Project Director, Snowy 2.0

Attachment 1



Analysis of the Smoky Mouse camera survey data, time (by hour) along the horizontal axis and number of photos along the vertical axis

The chart above is based on data from the period commencing November 2017 through to April 2019 (excluding the winter period), which is representative of the requested period for the extension of hours on Lobs Hole Ravine Road.

The data has been collated from:

- 93 remote camera surveys sites with 186 cameras, equating to over 3,000 nights of surveys;
- a further 110 regional remote camera survey sites with 220 cameras, equating to 5,808 nights of survey; and
- 2015 verified photos of the Smoky Mouse.