

Aerial Imagery 1982

Warragamba Dam Wall, Warragamba, NSW 2752



Legend

- Site Boundary
- Buffer 150m

Scale:
0 140 280 420 560
Meters

Data Sources: Aerial Imagery:
© NSW Department of Customer Service

Coordinate System:
GDA 1994 MGA Zone 56


Date: 13 May 2022


Aerial Imagery 1978

Warragamba Dam Wall, Warragamba, NSW 2752



Legend

 Site Boundary

 Buffer 150m

Scale:

0 140 280 420 560

Meters

Data Source Aerial Imagery:
© NSW Department of Customer Service

Coordinate System:
GDA 1994 MGA Zone 56

Date: 15 May 2022

Aerial Imagery 1970

Warragamba Dam Wall, Warragamba, NSW 2752



Scale: 0 140 280 420 560 Meters	Data Sources: Aerial Imagery: © NSW Department of Customer Service	Coordinate System: GDA 1994 MGA Zone 56	Date: 13 May 2022
---------------------------------------	-----------------------------------------------------------------------	--------------------------------------------	-------------------

Aerial Imagery 1965

Warragamba Dam Wall, Warragamba, NSW 2752





Aerial Imagery 1949

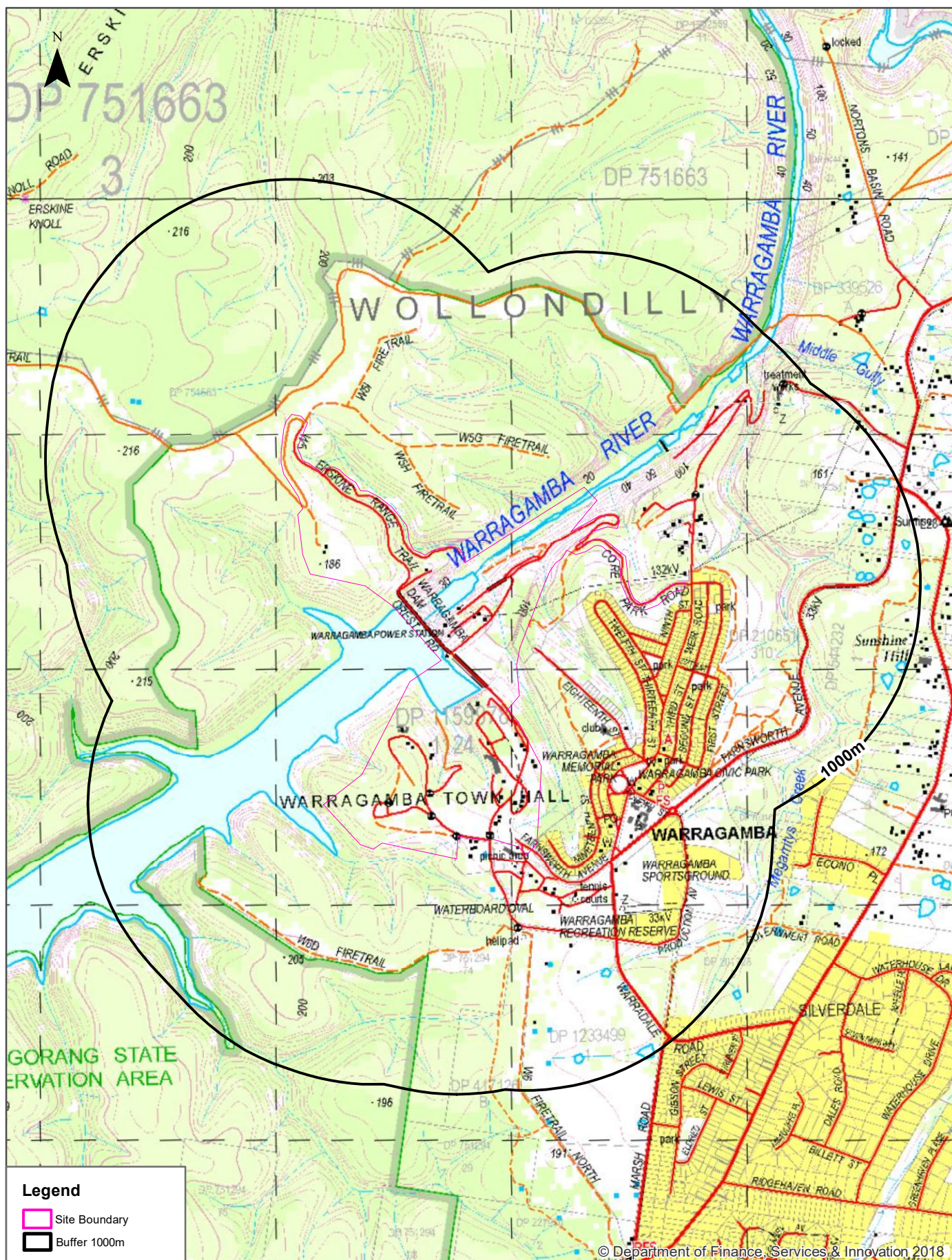
Warragamba Dam Wall, Warragamba, NSW 2752



Scale: 0 140 280 420 560 Meters	Data Source Aerial Imagery: ©2022 Geoscience Australia	Coordinate System: GDA 1994 MGA Zone 56	Date: 15 May 2022
---------------------------------------	--------------------------------------------------------	--------------------------------------------	-------------------

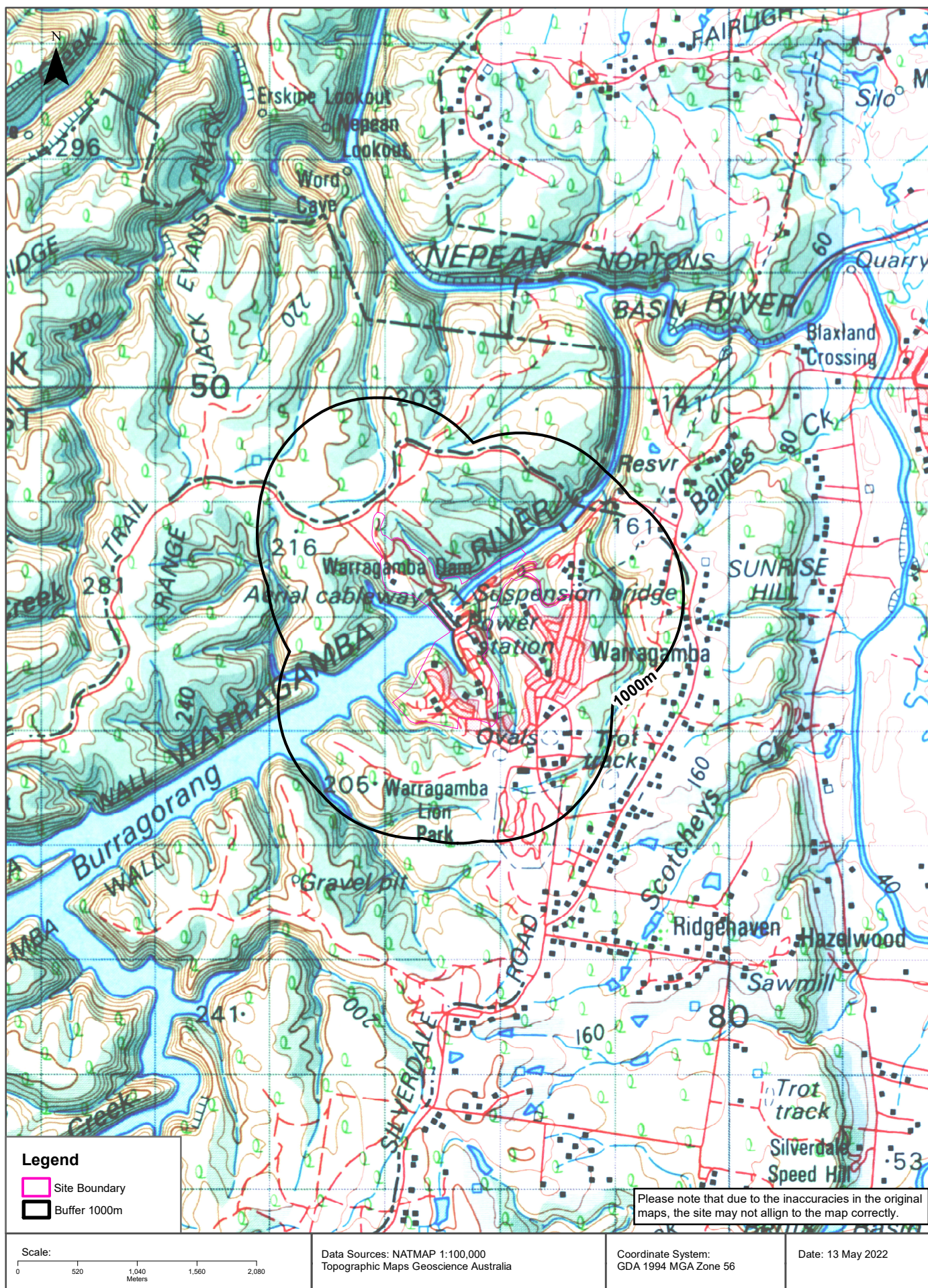
Topographic Map 2015

Warragamba Dam Wall, Warragamba, NSW 2752



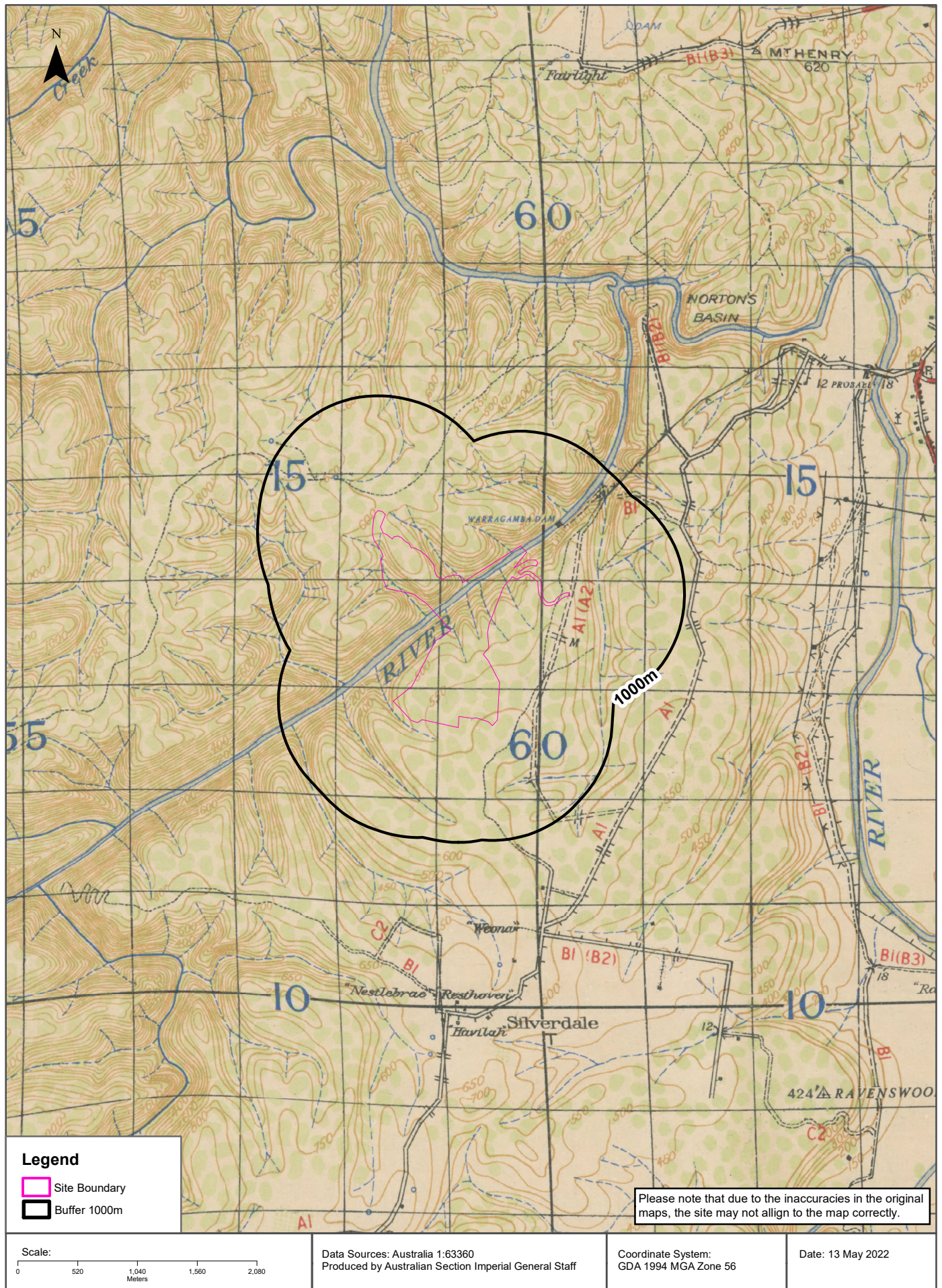
Historical Map 1975

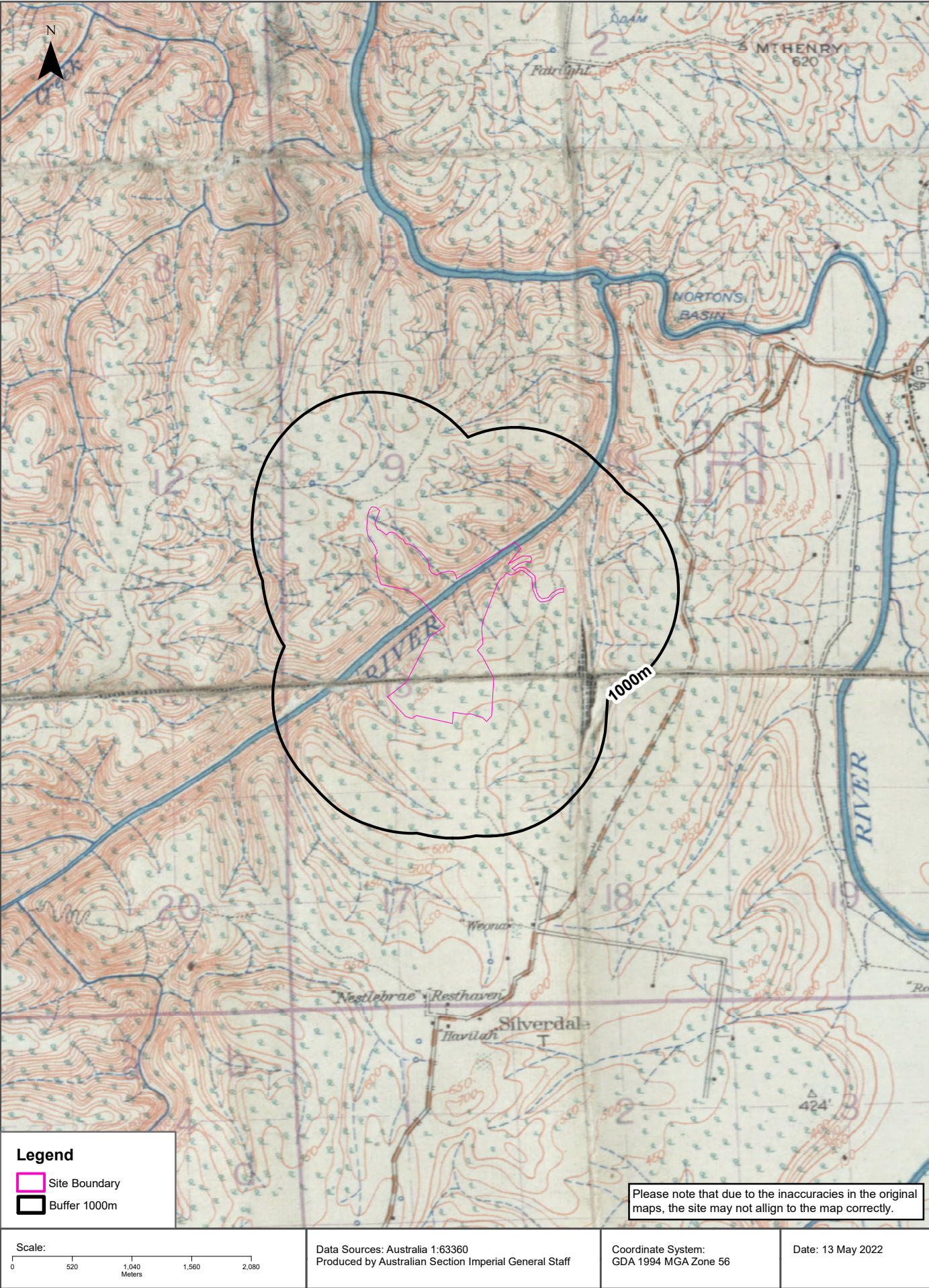
Warragamba Dam Wall, Warragamba, NSW 2752



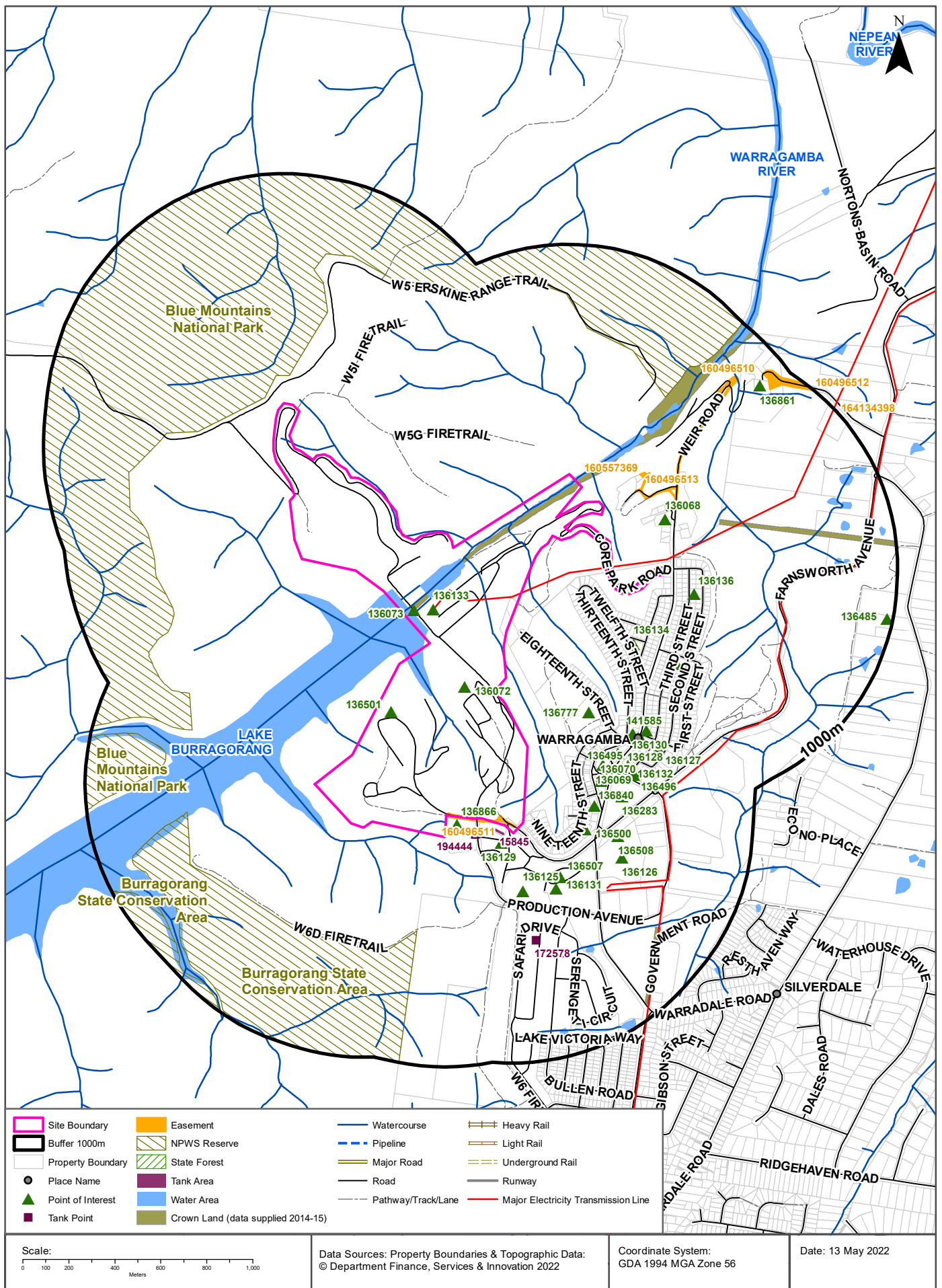
Historical Map c.1942

Warragamba Dam Wall, Warragamba, NSW 2752





Warragamba Dam Wall, Warragamba, NSW 2752



Topographic Features

Warragamba Dam Wall, Warragamba, NSW 2752

Points of Interest

What Points of Interest exist within the dataset buffer?

Map Id	Feature Type	Label	Distance	Direction
136072	Tourist Information Centre	WARRAGAMBA DAM VISITORS CENTRE	0m	On-site
136501	Community Facility	WARRAGAMBA CONFERENCE CENTRE	0m	On-site
136073	Dam Wall	WARRAGAMBA DAM	0m	On-site
136133	Hydro Power Station	WARRAGAMBA POWER STATION	0m	On-site
136866	Filtration Plant	WARRAGAMBA WATER TREATMENT PLANT	34m	South
136129	Picnic Area	Picnic Area	66m	South
136136	Park	Park	145m	East
136068	Park	KIPARA PARK	210m	North East
136134	Park	Park	220m	East
136125	Sports Field	WATERBOARD OVAL	254m	South
136500	Place Of Worship	BAPTIST CHURCH	272m	South East
136507	Sports Court	TENNIS COURTS	279m	South East
136131	Park	WARRAGAMBA RECREATION RESERVE	304m	South East
136777	Club	WARRAGAMBA WORKERS AND SPORTING CLUB	304m	South East
136499	Post Office	WARRAGAMBA POST OFFICE	304m	South East
136840	Urban Place	WARRAGAMBA TOWN HALL	327m	South East
136069	Park	WARRAGAMBA MEMORIAL PARK	332m	South East
136135	Park	Park	358m	East
136070	Park	LIVVIS PLACE INCLUSIVE PLAYGROUND	394m	South East
136508	Swimming Pool	WARRAGAMBA POOL	417m	South East
136495	Place Of Worship	ANGLICAN CHURCH	419m	South East
136283	Primary School	WARRAGAMBA PUBLIC SCHOOL	423m	South East
136132	Child Care Centre	WARRAGAMBA PRE-SCHOOL	440m	South East
136126	Sports Field	WARRAGAMBA SPORTSGROUND	456m	South East
141585	Community Facility	WARRAGAMBA NEIGHBOURHOOD CENTRE	457m	South East
136707	Community Medical Centre	WARRAGAMBA EARLY CHILDHOOD HEALTH CENTRE	462m	South East
136496	Fire Station	WARRAGAMBA FIRE STATION	467m	South East
136497	Police Station	WARRAGAMBA POLICE STATION	474m	South East
136936	Village	WARRAGAMBA	482m	South East
136128	Place Of Worship	CATHOLIC CHURCH	499m	South East
136130	Ambulance Station	WARRAGAMBA AMBULANCE STATION	521m	East

Map Id	Feature Type	Label	Distance	Direction
136127	Park	Park	568m	South East
136861	Filtration Plant	WARRAGAMBA WATER TREATMENT PLANT	860m	North East
136485	Homestead	SUNSHINE HILL	976m	East

Topographic Data Source: © Land and Property Information (2015)

Creative Commons 3.0 © Commonwealth of Australia <http://creativecommons.org/licenses/by/3.0/au/deed.en>

Topographic Features

Warragamba Dam Wall, Warragamba, NSW 2752

Tanks (Areas)

What are the Tank Areas located within the dataset buffer?

Note. The large majority of tank features provided by LPI are derived from aerial imagery & are therefore primarily above ground tanks.

Map Id	Tank Type	Status	Name	Feature Currency	Distance	Direction
15845	Water	Operational		01/05/2020	18m	South

Tanks (Points)

What are the Tank Points located within the dataset buffer?

Note. The large majority of tank features provided by LPI are derived from aerial imagery & are therefore primarily above ground tanks.

Map Id	Tank Type	Status	Name	Feature Currency	Distance	Direction
194444	Water	Operational		10/04/2000	69m	South
172578	Water	Operational		10/04/2000	477m	South

Tanks Data Source: © Land and Property Information (2015)

Creative Commons 3.0 © Commonwealth of Australia <http://creativecommons.org/licenses/by/3.0/au/deed.en>

Major Easements

What Major Easements exist within the dataset buffer?

Note. Easements provided by LPI are not at the detail of local governments. They are limited to major easements such as Right of Carriageway, Electrical Lines (66kVa etc.), Easement to drain water & Significant subterranean pipelines (gas, water etc.).

Map Id	Easement Class	Easement Type	Easement Width	Distance	Direction
160496511	Primary	Right of way	VAR	0m	On-site
160496513	Primary	Right of way	VAR	151m	North East
160557369	Primary	Right of way	4m and VAR	175m	North East
160496510	Primary	Right of way	VAR	268m	North East
160496512	Primary	Right of way	VAR	887m	North East
164134398	Primary	Right of way	Var	999m	North East

Easements Data Source: © Land and Property Information (2015)

Creative Commons 3.0 © Commonwealth of Australia <http://creativecommons.org/licenses/by/3.0/au/deed.en>

Topographic Features

Warragamba Dam Wall, Warragamba, NSW 2752

State Forest

What State Forest exist within the dataset buffer?

State Forest Number	State Forest Name	Distance	Direction
N/A	No records in buffer		

State Forest Data Source: © NSW Department of Finance, Services & Innovation (2018)
Creative Commons 3.0 © Commonwealth of Australia <http://creativecommons.org/licenses/by/3.0/au/deed.en>

National Parks and Wildlife Service Reserves

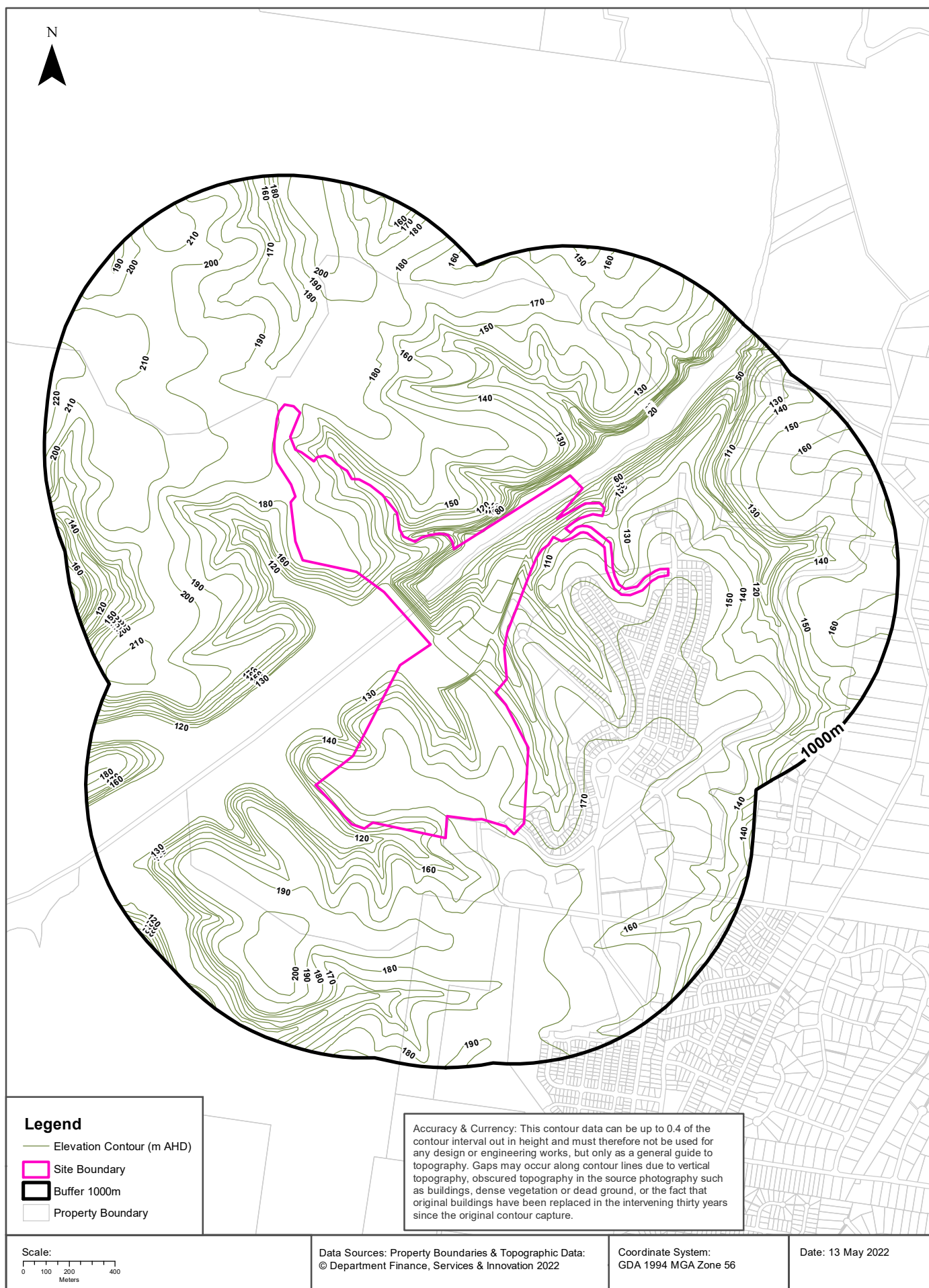
What NPWS Reserves exist within the dataset buffer?

Reserve Number	Reserve Type	Reserve Name	Gazetted Date	Distance	Direction
N0004	NATIONAL PARK	Blue Mountains National Park	01/10/1967	80m	North West
N0624	STATE CONSERVATION AREA	Burraborang State Conservation Area	13/12/1991	425m	South West

NPWS Data Source: © NSW Department of Finance, Services & Innovation (2018)
Creative Commons 3.0 © Commonwealth of Australia <http://creativecommons.org/licenses/by/3.0/au/deed.en>

Elevation Contours (m AHD)

Warragamba Dam Wall, Warragamba, NSW 2752



Hydrogeology & Groundwater

Warragamba Dam Wall, Warragamba, NSW 2752

Hydrogeology

Description of aquifers within the dataset buffer:

Description	Distance	Direction
Porous, extensive aquifers of low to moderate productivity	0m	On-site

Hydrogeology Map of Australia : Commonwealth of Australia (Geoscience Australia)
Creative Commons 3.0 © Commonwealth of Australia <http://creativecommons.org/licenses/by/3.0/au/deed.en>

Temporary Water Restriction (Botany Sands Groundwater Source) Order 2018

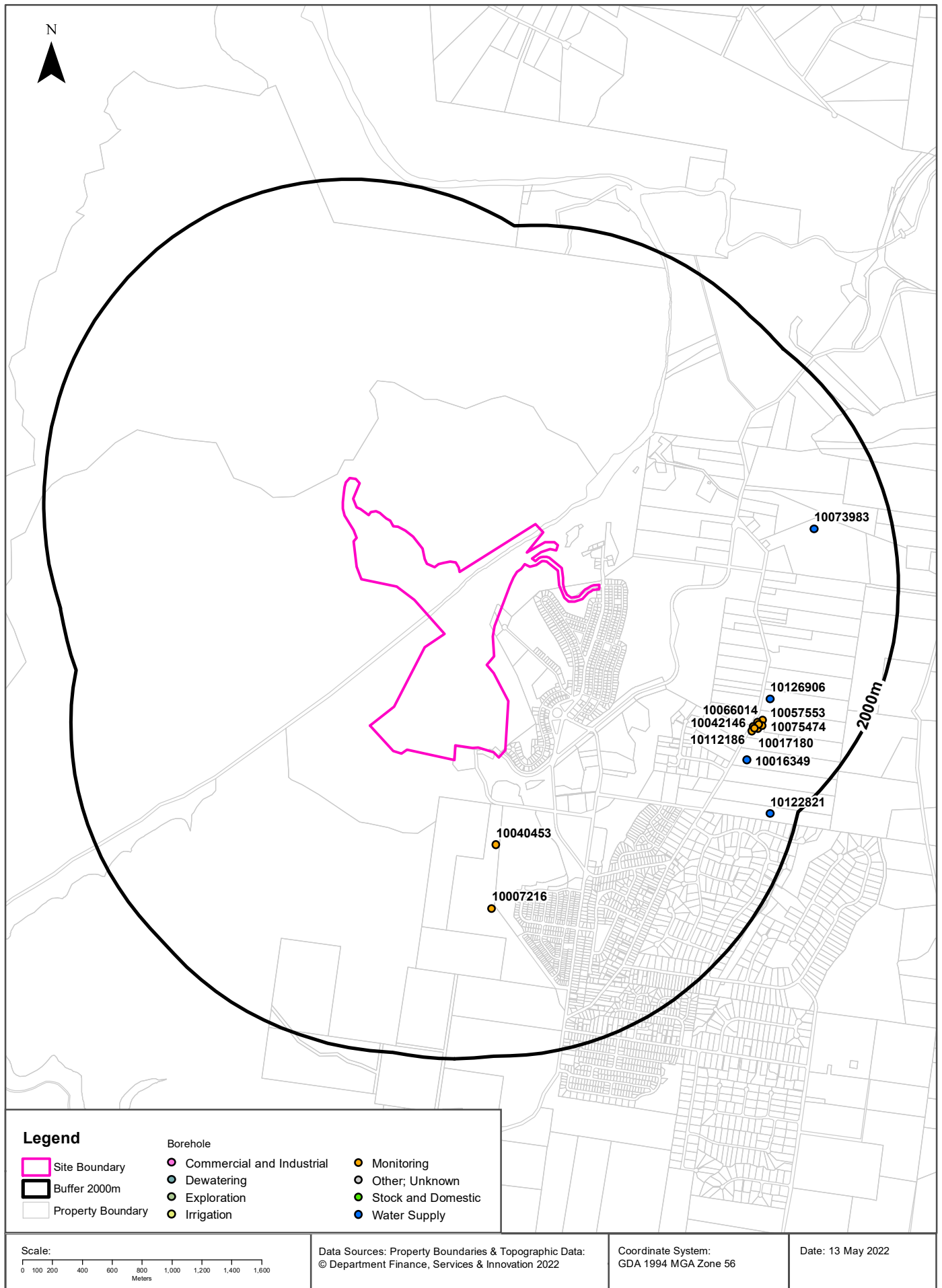
Temporary water restrictions relating to the Botany Sands aquifer within the dataset buffer:

Prohibition Area No.	Prohibition	Distance	Direction
N/A	No records in buffer		

Temporary Water Restriction (Botany Sands Groundwater Source) Order 2018 Data Source : NSW Department of Primary Industries

Groundwater Boreholes

Warragamba Dam Wall, Warragamba, NSW 2752



Hydrogeology & Groundwater

Warragamba Dam Wall, Warragamba, NSW 2752

Groundwater Boreholes

Boreholes within the dataset buffer:

NGIS Bore ID	NSW Bore ID	Bore Type	Status	Drill Date	Bore Depth (m)	Reference Elevation	Height Datum	Salinity (mg/L)	Yield (L/s)	SWL (mbgl)	Distance	Direction
10040453	GW075142	Monitoring	Functioning	23/06/2006	246.00		AHD		2.860	92.00	586m	South
10007216	GW075140	Monitoring	Functioning	23/06/2006	290.00		AHD		10.000	100.00	1015m	South
10126906	GW101239	Water Supply	Functioning	03/02/1998	180.00		AHD	134	2.200	114.00	1363m	East
10042146	GW109742	Monitoring	Unknown	11/08/2003	6.90		AHD			2.50	1385m	East
10066014	GW109738	Monitoring	Unknown	11/08/2003	7.00		AHD			2.50	1388m	East
10112186	GW109743	Monitoring	Unknown	11/08/2003	7.00		AHD			2.20	1398m	East
10114218	GW109739	Monitoring	Unknown	11/08/2003	7.00		AHD			1.80	1399m	East
10057553	GW109741	Monitoring	Unknown	11/08/2003	7.00		AHD			2.50	1404m	East
10098489	GW109737	Monitoring	Unknown	11/08/2003	7.00		AHD			2.30	1404m	East
10017180	GW109736	Monitoring	Unknown	11/08/2003	9.00		AHD			2.00	1420m	East
10075474	GW109740	Monitoring	Unknown	11/08/2003	7.30		AHD			2.10	1427m	East
10073983	GW072366	Water Supply	Unknown	02/09/1991	178.40		AHD	0-500 ppm			1484m	East
10016349	GW072304	Water Supply	Functioning	16/12/1994	162.50		AHD	0-500 ppm			1515m	South East
10122821	GW108775	Water Supply	Functioning	17/04/2008	180.00		AHD	210	2.700	120.00	1823m	South East

Borehole Data Source: Bureau of Meteorology; Water NSW. Creative Commons 3.0 © Commonwealth of Australia <http://creativecommons.org/licenses/by/3.0/au/deed.en>

Hydrogeology & Groundwater

Warragamba Dam Wall, Warragamba, NSW 2752

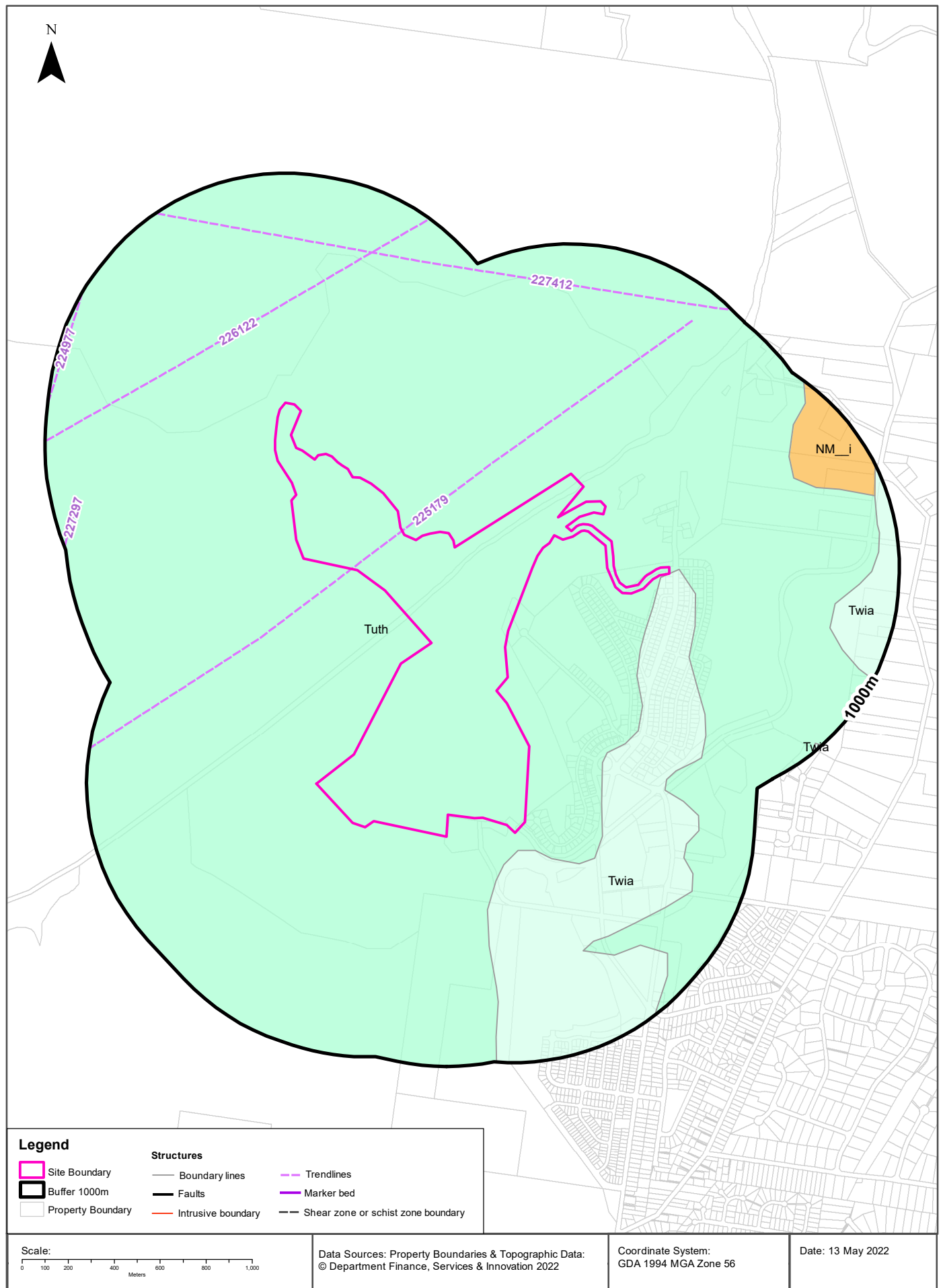
Driller's Logs

Drill log data relevant to the boreholes within the dataset buffer:

NGIS Bore ID	Drillers Log	Distance	Direction
10040453	0.00m-54.00m Sandstone, orange/yellow 54.00m-246.00m Sandstone, grey, light/dark	586m	South
10007216	0.00m-1.00m Topsoil 1.00m-39.00m Sandstone 39.00m-40.00m Shale 40.00m-132.00m Sandstone 132.00m-134.00m Shale 134.00m-239.00m Sandstone 239.00m-241.00m Shale 241.00m-255.00m Sandstone 255.00m-260.00m Shale 260.00m-265.00m Sandstone 265.00m-270.00m Shale 270.00m-274.00m Sandstone 274.00m-284.00m Shale 284.00m-290.00m Sandstone/Shale	1015m	South
10126906	0.00m-2.50m clay loam overburden 2.50m-14.60m brown, coarse grained sandstone 14.60m-15.20m sandstone/clay 15.20m-39.50m sandstone, medium grained, brown 39.50m-41.00m sandstone, coarse grain, light brown 41.00m-47.00m quartz 47.00m-51.00m ironstone 51.00m-52.50m quartz and clay 52.50m-54.00m sandstone and clay 54.00m-69.00m sandstone, medium grained, grey 69.00m-70.50m sandstone and quartz 70.50m-88.50m sandstone, medium grained, red 88.50m-97.20m quartz 97.20m-106.20m sandstone and quartz matrix 106.20m-113.00m sandstone, medium grain, light grey 113.00m-116.20m quartz 116.20m-118.00m sandstone, finegrained, grey 118.00m-124.50m sandstone, fine grained, dark grey 124.50m-127.00m sandstone and quartz 127.00m-136.50m quartz (water bearing) 136.50m-137.50m sandstone, medium grained, grey 137.50m-146.00m sandstone, finegrained, dark grey 146.00m-151.50m sandstone, medium grained, light grey 151.50m-154.50m quartz (water bearing) 154.50m-161.00m quartz and sandstone (water bearing) 161.00m-161.60m quartz sand 161.60m-180.00m sandstone and fine quartz	1363m	East
10042146	0.00m-0.20m TOPSOIL 0.20m-3.00m SILTY CLAY 3.00m-6.90m WEATHERED SHALE	1385m	East
10066014	0.00m-2.00m FILL, SILTY CLAY,SANDY CLAY 2.00m-7.00m WEATHERED SHALE	1388m	East
10112186	0.00m-0.50m FILL,CLAY,SAND 0.50m-3.00m SILTY CLAY 3.00m-7.00m WEATHERED SHALE	1398m	East
10114218	0.00m-1.00m FILL,SILTY CLAY 1.00m-7.00m WEATHERED SHALE	1399m	East
10057553	0.00m-2.00m FILL,GRAVELLY CLAYEY SILT 2.00m-7.00m WEATHERED SHALE	1404m	East
10098489	0.00m-1.50m FILL.SILTY CLAY 1.50m-7.00m WEATHERED SHALE	1404m	East
10017180	0.00m-1.50m FILL.SILTY CLAY,GRAVEL 1.50m-7.00m WEATHERED SHALE 7.00m-9.00m SANDSTONE	1420m	East
10075474	0.00m-1.00m FILL,SILTY CLAY, SANDY 1.00m-7.30m WEATHERED SHALE	1427m	East

NGIS Bore ID	Drillers Log	Distance	Direction
10073983	0.00m-1.10m 1.10m-3.50m 3.50m-6.00m Soft Sandstone 6.00m-42.40m Soft/hard Sandstone Bands 42.40m-178.40m	1484m	East
10016349	0.00m-0.40m Topsoil 0.40m-2.80m Red Clay 2.80m-23.10m Soft Brown Sandstone 23.10m-44.30m L/grey Med Grain S/stone Clay Matrix 44.30m-45.80m Grey M/grain S/stone Quartz Matrix 45.80m-88.30m Light Grey Med Grain Sdsn 88.30m-90.20m Quartz 90.20m-96.00m Light Grey Med Grain Sdsn 96.00m-96.70m Shale/quartz Cross Bed 96.70m-106.60m Hard Dark Grey Shale 106.60m-114.60m Light Grey Med Grain S/stone 114.60m-126.20m Quartz 126.20m-129.90m Light Grey Med Grained S/stone 129.90m-133.80m Quartz 133.80m-141.60m Light Grey Med Grained S/stone 141.60m-141.90m Quartz 141.90m-153.30m Light Grey Med Grain S/stone 153.30m-154.10m Quartz 154.10m-158.20m Light Grey Med Grain S/stone 158.20m-158.50m Fractured Zone 158.50m-162.50m Light Grey Med Grain S/stone	1515m	South East
10122821	0.00m-8.00m SHALE 8.00m-30.00m SANDSTONE 30.00m-33.00m SHALE 33.00m-174.00m SANDSTONE 174.00m-177.00m SHALE 177.00m-180.00m SANDSTONE	1823m	South East

Drill Log Data Source: Bureau of Meteorology; Water NSW. Creative Commons 3.0 © Commonwealth of Australia <http://creativecommons.org/licenses/by/3.0/au/deed.en>



Geology

Warragamba Dam Wall, Warragamba, NSW 2752

Geological Units

What are the Geological Units within the dataset buffer?

Unit Code	Unit Name	Description	Unit Stratigraphy	Age	Dominant Lithology	Distance
Tuth	Hawkesbury Sandstone	Medium- to coarse-grained quartz sandstone with minor shale and laminite lenses.	/Ungrouped Triassic units//Hawkesbury Sandstone//	Anisian (base) to Anisian (top)	Sandstone	0m
Twia	Ashfield Shale	Black to light grey shale and laminite.	/Wianamatta Group//Ashfield Shale//	Middle Triassic (base) to Middle Triassic (top)	Shale	0m
NM__i	Rickabys Creek Gravel	Conglomerate, matrix-supported.	///Rickabys Creek Gravel//	Oligocene (base) to Upper Pleistocene (top)	Conglomerate	665m

Linear Geological Structures

What are the Dyke, Sill, Fracture, Lineament and Vein trendlines within the dataset buffer?

Map ID	Feature Description	Map Sheet Name	Distance
225179	Lineament	Penrith 1:100,000 Geological Sheet	0m
226122	Lineament	Penrith 1:100,000 Geological Sheet	375m
227412	Lineament	Penrith 1:100,000 Geological Sheet	711m
227297	Lineament	Penrith 1:100,000 Geological Sheet	923m
224977	Lineament	Penrith 1:100,000 Geological Sheet	971m

What are the Faults, Shear zones or Schist zones, Intrusive boundaries & Marker beds within the dataset buffer?

Map ID	Boundary Type	Description	Map Sheet Name	Distance
No Features				

Geological Data Source: Statewide Seamless Geology v2.1, Department of Regional NSW

Creative Commons 4.0 © Commonwealth of Australia <http://creativecommons.org/licenses/by/4.0/au/deed.en>

Naturally Occurring Asbestos Potential

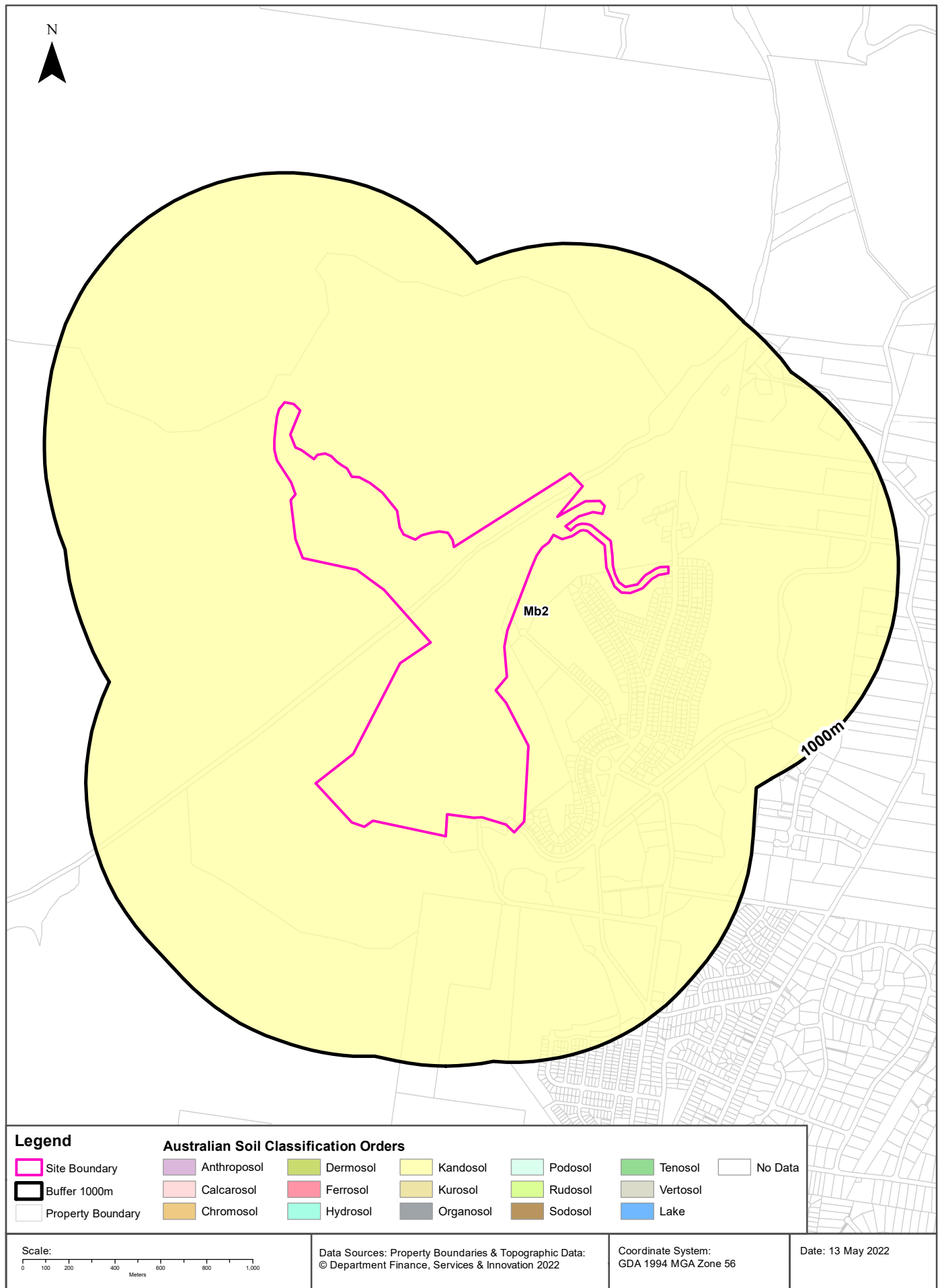
Warragamba Dam Wall, Warragamba, NSW 2752

Naturally Occurring Asbestos Potential

Naturally Occurring Asbestos Potential within the dataset buffer:

Potential	Sym	Strat Name	Group	Formation	Scale	Min Age	Max Age	Rock Type	Dom Lith	Description	Dist	Dir
No records in buffer												

Naturally Occurring Asbestos Potential Data Source: © State of New South Wales through NSW Department of Industry, Resources & Energy



Soils

Warragamba Dam Wall, Warragamba, NSW 2752

Atlas of Australian Soils

Soil mapping units and Australian Soil Classification orders within the dataset buffer:

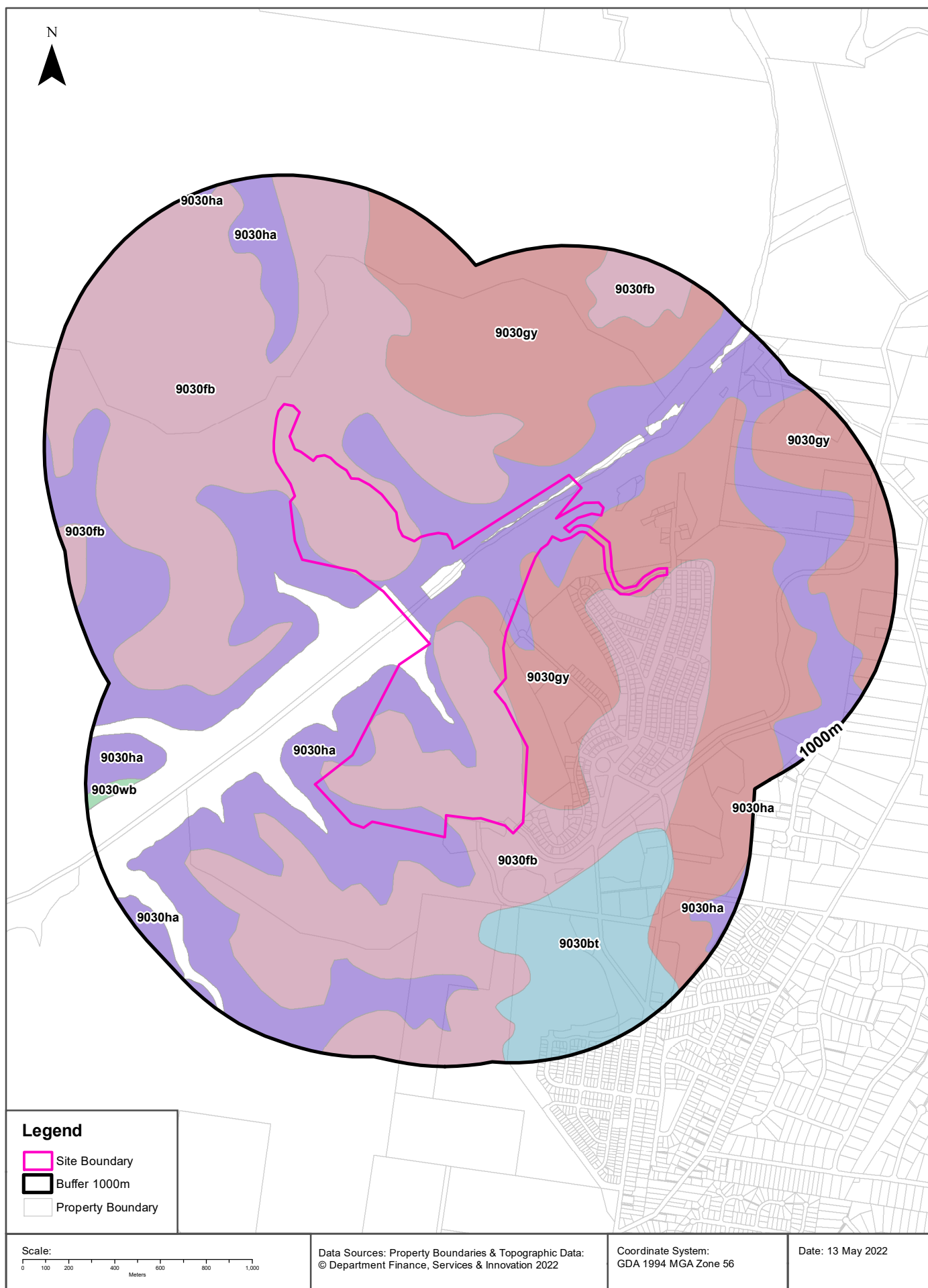
Map Unit Code	Soil Order	Map Unit Description	Distance	Direction
Mb2	Kandosol	Dissected sandstone plateau of moderate to strong relief with sandstone pillars, ledges, and slabs-- level to undulating ridges, irregularly benched slopes, steep ridges, cliffs, canyons, narrow sandy valleys: chief soils are (i) on areas of gentle to moderate relief, acid yellow leached earths (Gn2.74) and (Gn2.34) and acid leached yellow earths (Gn2.24)- sometimes these soils contain ironstone gravel; and (ii) on, or adjacent to, areas of strong relief, siliceous sands (Uc1.2), leached sands (Uc2.12) and (Uc2.2), and shallow forms of the above (Gn2) soils. Associated are: (i) on flat to gently undulating remnants of the original plateau surface, leached sands (Uc2.3), siliceous sands (Uc1.2), sandy earths (Uc5.22), and (Gn2) soils as for (i) above (these areas are in part comparable with unit Cb29); (ii) on flat ironstone gravelly remnants of the original plateau surface, (Gn2) soils as for unit Mb5(i); (iii) on gently undulating ridges where interbedded shales are exposed, shallow, often stony (Dy3.41), (Dr2.21), and related soils similar to unit Tb35; (iv) narrow valleys of (Uc2.3) soils flanked by moderate slopes of (Dy3.41) soils; (v) escarpments of steep hills with shallow (Dy) and (Dr) soils between sandstone pillars; and (vi) shallow (Um) soils, such as (Um6.21) on steep hills of basic rocks. As mapped, minor areas of units Mg20, Mm1, and Mw8 are included. Data are limited.	0m	On-site

Atlas of Australian Soils Data Source: CSIRO

Creative Commons 4.0 © Commonwealth of Australia <http://creativecommons.org/licenses/by/4.0/au/deed.en>

Soil Landscapes of Central and Eastern NSW

Warragamba Dam Wall, Warragamba, NSW 2752



Soils

Warragamba Dam Wall, Warragamba, NSW 2752

Soil Landscapes of Central and Eastern NSW

Soil Landscapes of Central and Eastern NSW within the dataset buffer:

Soil Code	Name	Distance	Direction
9030ha	Hawkesbury	0m	On-site
9030fb	Faulconbridge	0m	On-site
9030gy	Gymea	0m	On-site
9030bt	Blacktown	306m	South East
9030wb	Warragamba	748m	South West

Soil Landscapes of Central and Eastern NSW: NSW Department of Planning, Industry and Environment
Creative Commons 4.0 © Commonwealth of Australia <http://creativecommons.org/licenses/by/4.0/au/deed.en>

Acid Sulfate Soils

Warragamba Dam Wall, Warragamba, NSW 2752

Environmental Planning Instrument - Acid Sulfate Soils

What is the on-site Acid Sulfate Soil Plan Class that presents the largest environmental risk?

Soil Class	Description	EPI Name
N/A		

If the on-site Soil Class is 5, what other soil classes exist within 500m?

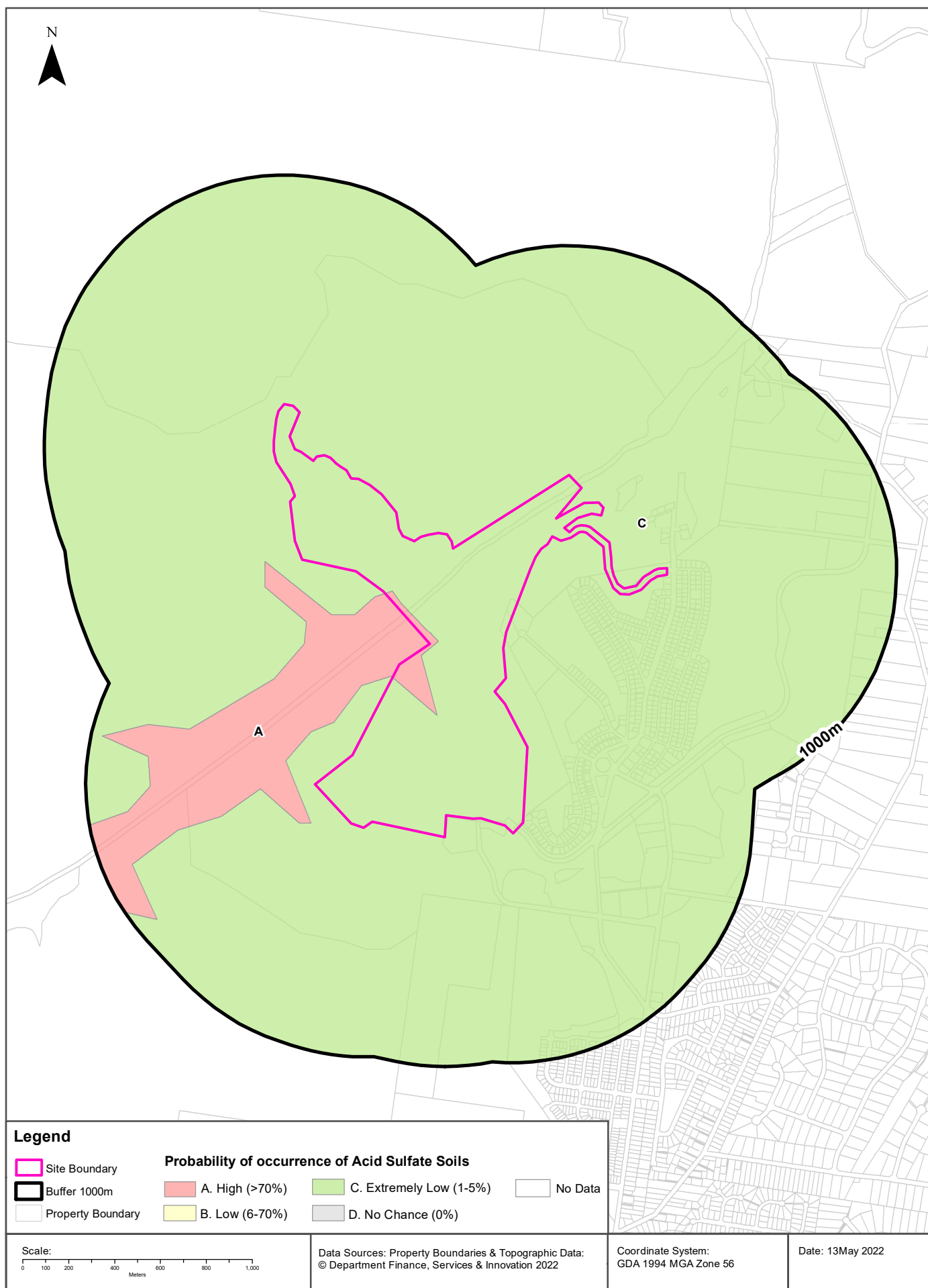
Soil Class	Description	EPI Name	Distance	Direction
N/A				

NSW Crown Copyright - Planning and Environment

Creative Commons 4.0 © Commonwealth of Australia <https://creativecommons.org/licenses/by/4.0/>

Atlas of Australian Acid Sulfate Soils

Warragamba Dam Wall, Warragamba, NSW 2752



Acid Sulfate Soils

Warragamba Dam Wall, Warragamba, NSW 2752

Atlas of Australian Acid Sulfate Soils

Atlas of Australian Acid Sulfate Soil categories within the dataset buffer:

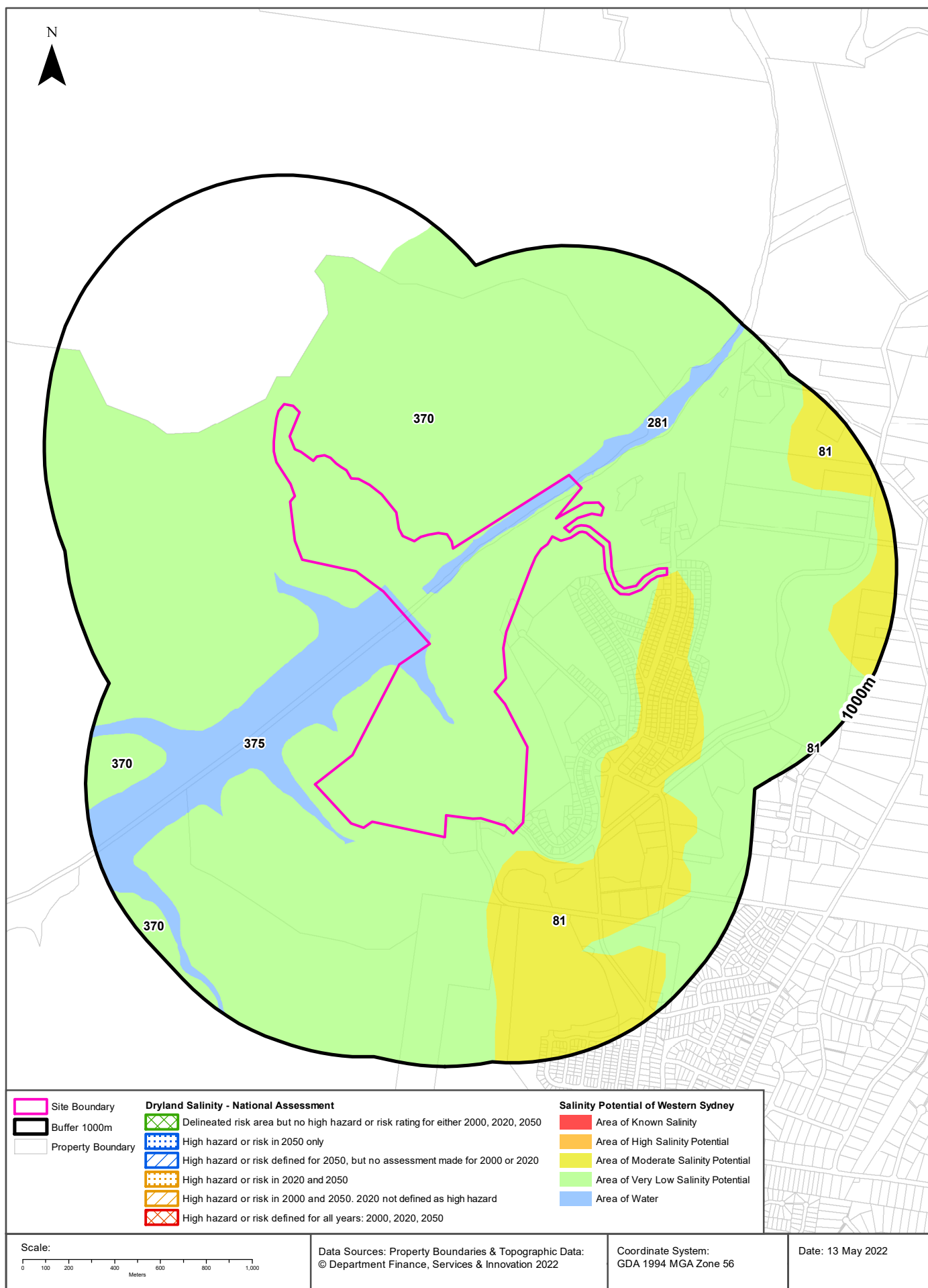
Class	Description	Distance	Direction
C	Extremely low probability of occurrence. 1-5% chance of occurrence with occurrences in small localised areas.	0m	On-site
A	High Probability of occurrence. >70% chance of occurrence.	0m	On-site

Atlas of Australian Acid Sulfate Soils Data Source: CSIRO

Creative Commons 3.0 © Commonwealth of Australia <http://creativecommons.org/licenses/by/3.0/au/deed.en>

Dryland Salinity

Warragamba Dam Wall, Warragamba, NSW 2752



Dryland Salinity

Warragamba Dam Wall, Warragamba, NSW 2752

Dryland Salinity - National Assessment

Is there Dryland Salinity - National Assessment data onsite?

No

Is there Dryland Salinity - National Assessment data within the dataset buffer?

No

What Dryland Salinity assessments are given?

Assessment 2000	Assessment 2020	Assessment 2050	Distance	Direction
N/A	N/A	N/A		

Dryland Salinity Data Source : National Land and Water Resources Audit

The Commonwealth and all suppliers of source data used to derive the maps of "Australia, Forecast Areas Containing Land of High Hazard or Risk of Dryland Salinity from 2000 to 2050" do not warrant the accuracy or completeness of information in this product. Any person using or relying upon such information does so on the basis that the Commonwealth and data suppliers shall bear no responsibility or liability whatsoever for any errors, faults, defects or omissions in the information. Any persons using this information do so at their own risk.

In many cases where a high risk is indicated, less than 100% of the area will have a high hazard or risk.

Dryland Salinity Potential of Western Sydney

Dryland Salinity Potential of Western Sydney within the dataset buffer?

Feature Id	Classification	Description	Distance	Direction
370	LOW	Area of Very Low Salinity Potential	0m	On-site
281	WATER	Area of Water	0m	On-site
375	WATER	Area of Water	0m	On-site
81	MODERATE	Area of Moderate Salinity Potential	0m	South East

Dryland Salinity Potential of Western Sydney Data Source : NSW Office of Environment and Heritage

Creative Commons 3.0 © Commonwealth of Australia <http://creativecommons.org/licenses/by/3.0/au/deed.en>

Mining

Warragamba Dam Wall, Warragamba, NSW 2752

Mining Subsidence Districts

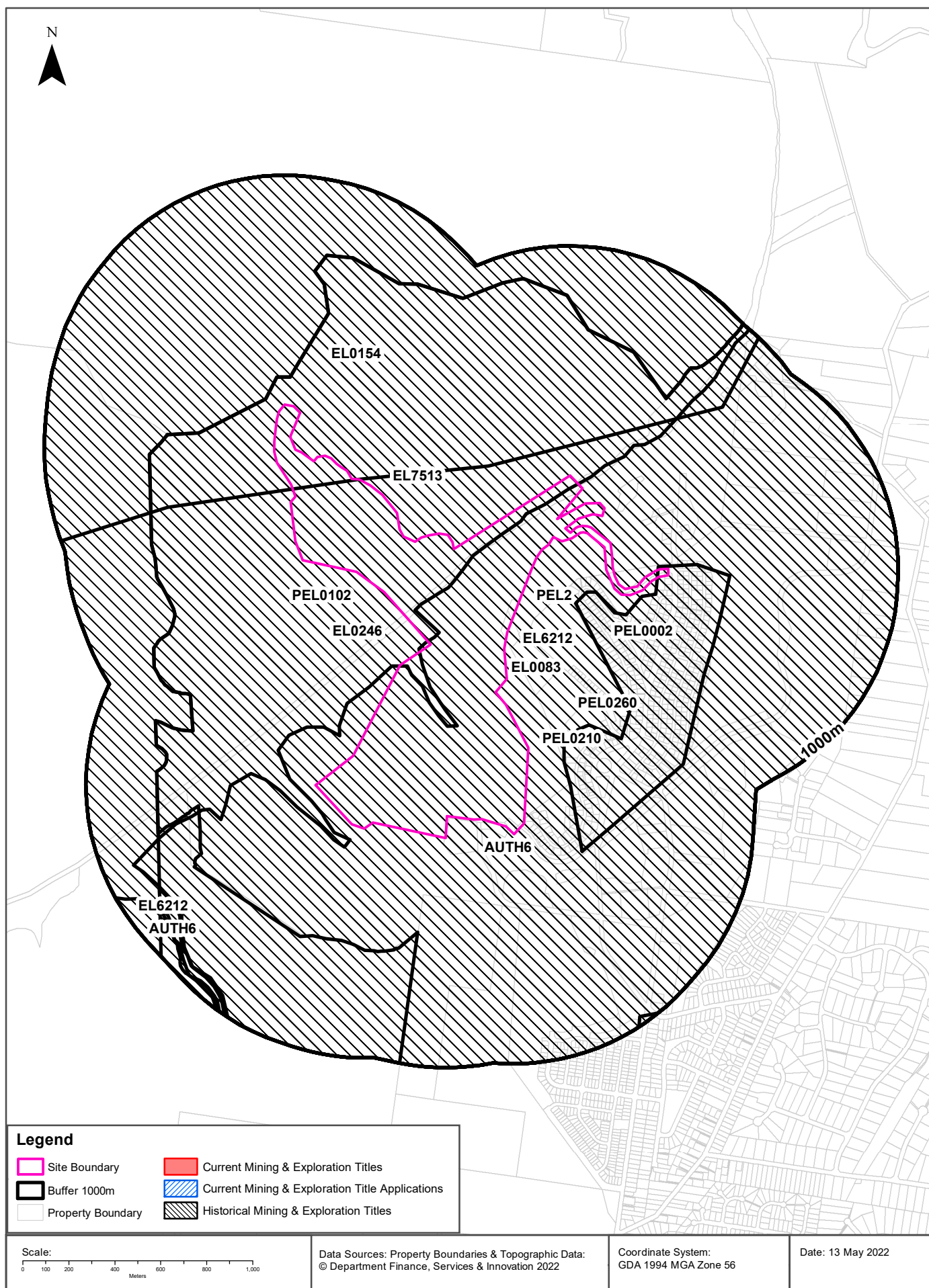
Mining Subsidence Districts within the dataset buffer:

District	Distance	Direction
There are no Mining Subsidence Districts within the report buffer		

Mining Subsidence District Data Source: © Land and Property Information (2016)
Creative Commons 3.0 © Commonwealth of Australia <http://creativecommons.org/licenses/by/3.0/au/deed.en>

Mining & Exploration Titles

Warragamba Dam Wall, Warragamba, NSW 2752



Mining

Warragamba Dam Wall, Warragamba, NSW 2752

Current Mining & Exploration Titles

Current Mining & Exploration Titles within the dataset buffer:

Title Ref	Holder	Grant Date	Expiry Date	Last Renewed	Operation	Resource	Minerals	Dist	Dir
N/A	No records in buffer								

Current Mining & Exploration Titles Data Source: © State of New South Wales through NSW Department of Industry

Current Mining & Exploration Title Applications

Current Mining & Exploration Title Applications within the dataset buffer:

Application Ref	Applicant	Application Date	Operation	Resource	Minerals	Dist	Dir
N/A	No records in buffer						

Current Mining & Exploration Title Applications Data Source: © State of New South Wales through NSW Department of Industry

Mining

Warragamba Dam Wall, Warragamba, NSW 2752

Historical Mining & Exploration Titles

Historical Mining & Exploration Titles within the dataset buffer:

Title Ref	Holder	Start Date	End Date	Resource	Minerals	Dist	Dir
PEL2	AGL UPSTREAM INVESTMENTS PTY LIMITED			MINERALS		0m	On-site
AUTH6	SECRETARY OF THE DEPARTMENT OF PLANNING, INDUSTRY AND ENVIRONMENT			MINERALS		0m	On-site
EL0083	CONTINENTAL OIL CO OF AUSTRALIA LIMITED	01 Feb 1967	01 Feb 1968	MINERALS		0m	On-site
EL0246	CLUTHA DEVELOPMENT LIMITED	01 Sep 1970	01 Sep 1971	COAL	Coal Hydrocarbons	0m	On-site
PEL0260	NORTH BULLI COLLIERIES PTY LTD, AGL PETROLEUM OPERATIONS PTY LTD, THE AUSTRALIAN GAS LIGHT CO.	9/09/1981	8/03/1993	PETROLEUM	Petroleum	0m	On-site
PEL0102	AUSTRALIAN OIL AND GAS CORPORATION LTD			PETROLEUM	Petroleum	0m	On-site
PEL0002	AGL UPSTREAM INVESTMENTS PTY LIMITED	29/03/1993	6/07/2015	PETROLEUM	Petroleum	0m	On-site
PEL0210	THE AUSTRALIAN GAS LIGHT COMPANY (AGL), NORTH BULLI COLLIERIES PTY LTD			PETROLEUM	Petroleum	0m	On-site
EL0154	BRICKWORKS LIMITED	01 May 1969	01 May 1970	MINERALS		0m	On-site
EL6212	HOT ROCK ENERGY PTY LTD, LONGREACH OIL LIMITED	4 Mar 2004	3 Mar 2013	MINERALS	Geothermal	0m	On-site
EL7513	GRADIENT ENERGY LIMITED	7 Apr 2010	15 Apr 2011	MINERALS	Geothermal	0m	On-site

Historical Mining & Exploration Titles Data Source: © State of New South Wales through NSW Department of Industry

State Environmental Planning Policy

Warragamba Dam Wall, Warragamba, NSW 2752

State Significant Precincts

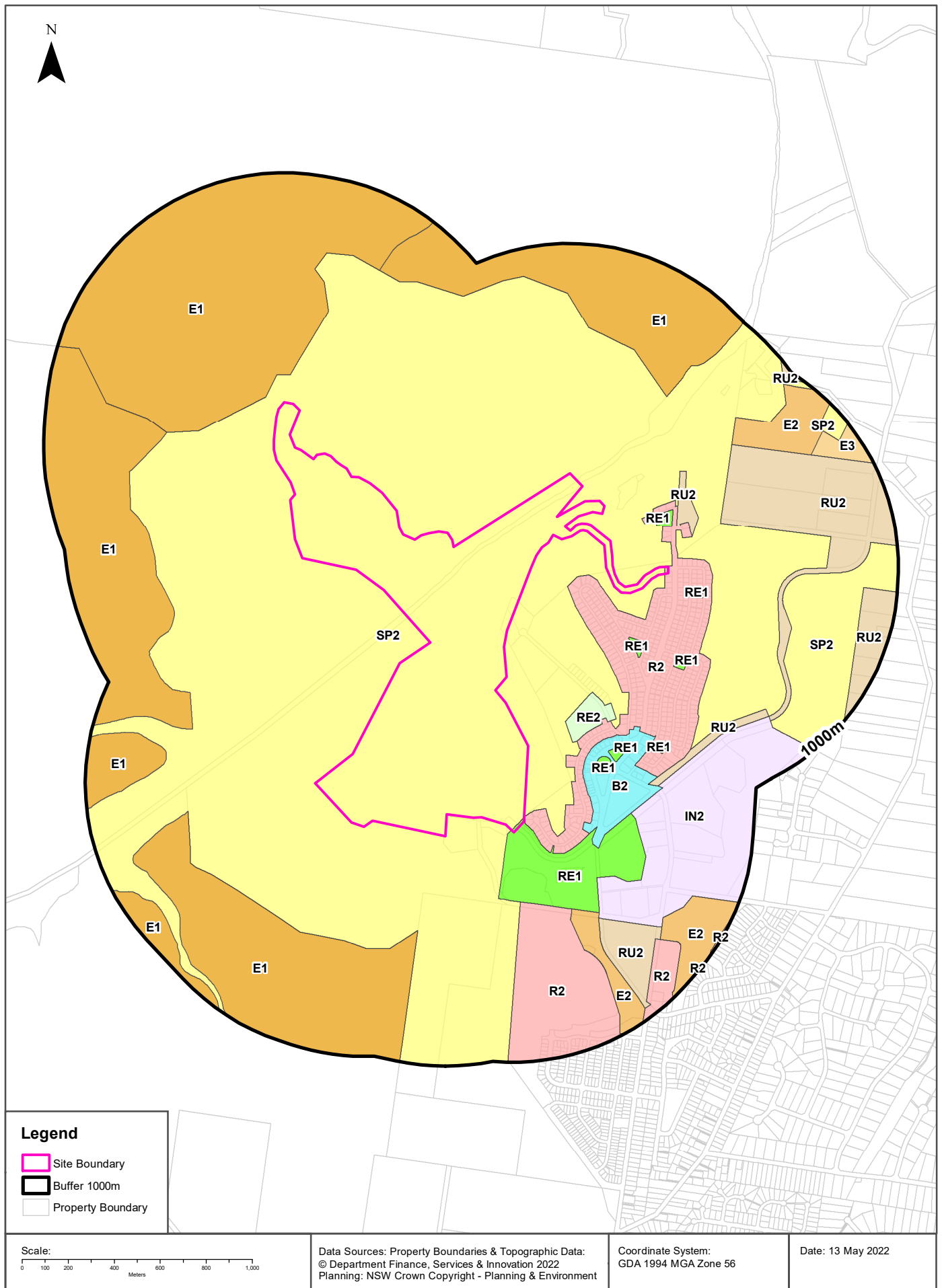
What SEPP State Significant Precincts exist within the dataset buffer?

Map Id	Precinct	EPI Name	Published Date	Commenced Date	Currency Date	Amendment	Distance	Direction
N/A	No records in buffer							

State Environment Planning Policy Data Source: NSW Crown Copyright - Planning & Environment
Creative Commons 4.0 © Commonwealth of Australia <https://creativecommons.org/licenses/by/4.0/>

EPI Planning Zones

Warragamba Dam Wall, Warragamba, NSW 2752



Environmental Planning Instrument

Warragamba Dam Wall, Warragamba, NSW 2752

Land Zoning

What EPI Land Zones exist within the dataset buffer?

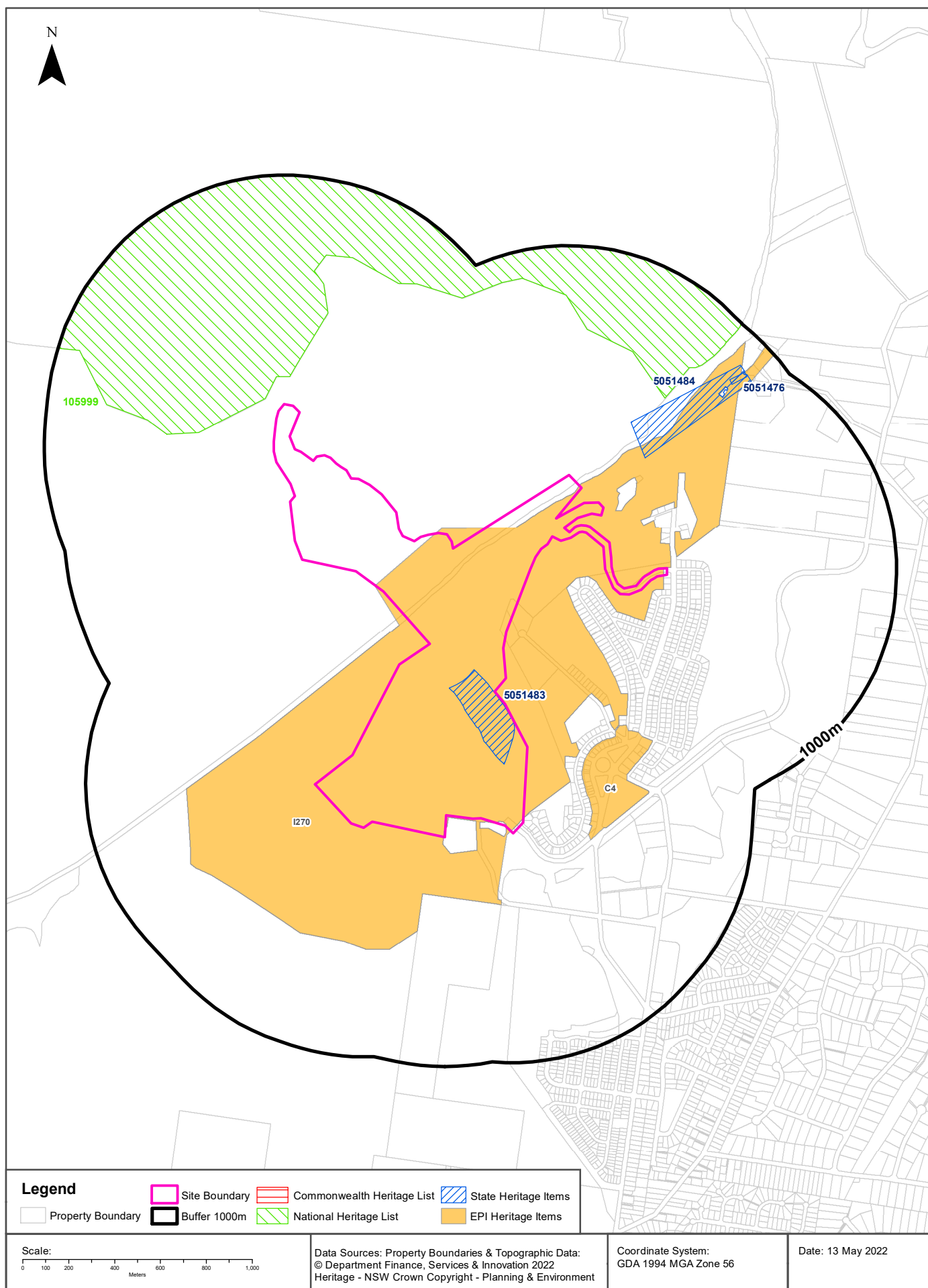
Zone	Description	Purpose	EPI Name	Published Date	Commenced Date	Currency Date	Amendment	Distance	Direction
SP2	Infrastructure	Water Supply System	Wollondilly Local Environmental Plan 2011	01/10/2021	01/10/2021	15/10/2021	Map Amendment No 1	0m	On-site
RE1	Public Recreation		Wollondilly Local Environmental Plan 2011	01/10/2021	01/10/2021	15/10/2021	Map Amendment No 1	0m	South East
R2	Low Density Residential		Wollondilly Local Environmental Plan 2011	01/10/2021	01/10/2021	15/10/2021	Map Amendment No 1	0m	East
E1	National Parks and Nature Reserves		Blue Mountains Local Environmental Plan 2015	21/12/2015	15/02/2016	28/06/2019		80m	North West
RE1	Public Recreation		Wollondilly Local Environmental Plan 2011	01/10/2021	01/10/2021	15/10/2021	Map Amendment No 1	118m	East
RU2	Rural Landscape		Wollondilly Local Environmental Plan 2011	01/10/2021	01/10/2021	15/10/2021	Map Amendment No 1	164m	North East
RE1	Public Recreation		Wollondilly Local Environmental Plan 2011	01/10/2021	01/10/2021	15/10/2021	Map Amendment No 1	176m	North East
RE2	Private Recreation		Wollondilly Local Environmental Plan 2011	01/10/2021	01/10/2021	15/10/2021	Map Amendment No 1	185m	South East
RE1	Public Recreation		Wollondilly Local Environmental Plan 2011	01/10/2021	01/10/2021	15/10/2021	Map Amendment No 1	194m	East
B2	Local Centre		Wollondilly Local Environmental Plan 2011	01/10/2021	01/10/2021	15/10/2021	Map Amendment No 1	242m	South East
RU2	Rural Landscape		Wollondilly Local Environmental Plan 2011	01/10/2021	01/10/2021	15/10/2021	Map Amendment No 1	294m	East
RE1	Public Recreation		Wollondilly Local Environmental Plan 2011	01/10/2021	01/10/2021	15/10/2021	Map Amendment No 1	300m	South East
R2	Low Density Residential		Wollondilly Local Environmental Plan 2011	01/10/2021	01/10/2021	15/10/2021	Map Amendment No 1	302m	South
RE1	Public Recreation		Wollondilly Local Environmental Plan 2011	01/10/2021	01/10/2021	15/10/2021	Map Amendment No 1	330m	East
RE1	Public Recreation		Wollondilly Local Environmental Plan 2011	01/10/2021	01/10/2021	15/10/2021	Map Amendment No 1	347m	South East
IN2	Light Industrial		Wollondilly Local Environmental Plan 2011	01/10/2021	01/10/2021	15/10/2021	Map Amendment No 1	400m	South East
E2	Environmental Conservation		Wollondilly Local Environmental Plan 2011	01/10/2021	01/10/2021	15/10/2021	Map Amendment No 1	415m	South East
E1	National Parks and Nature Reserves		Wollondilly Local Environmental Plan 2011	01/10/2021	01/10/2021	15/10/2021	Map Amendment No 1	425m	South West
E1	National Parks and Nature Reserves		Wollondilly Local Environmental Plan 2011	01/10/2021	01/10/2021	15/10/2021	Map Amendment No 1	468m	West
SP2	Infrastructure	Water Supply System	Wollondilly Local Environmental Plan 2011	01/10/2021	01/10/2021	15/10/2021	Map Amendment No 1	506m	East

Zone	Description	Purpose	EPI Name	Published Date	Commenced Date	Currency Date	Amendment	Distance	Direction
RU2	Rural Landscape		Wollondilly Local Environmental Plan 2011	01/10/2021	01/10/2021	15/10/2021	Map Amendment No 1	521m	South East
RU2	Rural Landscape		Wollondilly Local Environmental Plan 2011	01/10/2021	01/10/2021	15/10/2021	Map Amendment No 1	527m	East
E1	National Parks and Nature Reserves		Wollondilly Local Environmental Plan 2011	01/10/2021	01/10/2021	15/10/2021	Map Amendment No 1	533m	North East
RE1	Public Recreation		Wollondilly Local Environmental Plan 2011	01/10/2021	01/10/2021	15/10/2021	Map Amendment No 1	540m	South East
E2	Environmental Conservation		Wollondilly Local Environmental Plan 2011	01/10/2021	01/10/2021	15/10/2021	Map Amendment No 1	598m	North East
E2	Environmental Conservation		Wollondilly Local Environmental Plan 2011	01/10/2021	01/10/2021	15/10/2021	Map Amendment No 1	733m	South East
E3	Environmental Management		Wollondilly Local Environmental Plan 2011	01/10/2021	01/10/2021	15/10/2021	Map Amendment No 1	787m	North East

Environmental Planning Instrument Data Source: NSW Crown Copyright - Planning & Environment
Creative Commons 4.0 © Commonwealth of Australia <https://creativecommons.org/licenses/by/4.0/>

Heritage Items

Warragamba Dam Wall, Warragamba, NSW 2752



Heritage

Warragamba Dam Wall, Warragamba, NSW 2752

Commonwealth Heritage List

What are the Commonwealth Heritage List Items located within the dataset buffer?

Place Id	Name	Address	Place File No	Class	Status	Register Date	Distance	Direction
N/A	No records in buffer							

Heritage Data Source: Australian Government Department of the Environment and Energy - Heritage Branch
Creative Commons 3.0 © Commonwealth of Australia <https://creativecommons.org/licenses/by/3.0/au/deed.en>

National Heritage List

What are the National Heritage List Items located within the dataset buffer?

Note. Please click on Place Id to activate a hyperlink to online website.

Place Id	Name	Address	Place File No	Class	Status	Register Date	Distance	Direction
105999	The Greater Blue Mountains Area	Greater Western Hwy, Katoomba NSW	1/14/006/0061	Natural	Listed place	21/05/2007	80m	North

Heritage Data Source: Australian Government Department of the Environment and Energy - Heritage Branch
Creative Commons 3.0 © Commonwealth of Australia <https://creativecommons.org/licenses/by/3.0/au/deed.en>

State Heritage Register - Curtilages

What are the State Heritage Register Items located within the dataset buffer?

Map Id	Name	Address	LGA	Listing Date	Listing No	Plan No	Distance	Direction
5051483	Warragamba Dam - Haviland Park	Warragamba Dam, Warragamba	WOLLONDILLY	18/11/1999	01375	2971	0m	On-site
5051484	Warragamba Emergency Scheme	Warragamba Dam, Warragamba	WOLLONDILLY	18/11/1999	01376	3219	281m	North East
5051476	Megarritys Bridge	Warragamba Dam, Warragamba	WOLLONDILLY	18/11/1999	01367	2969	777m	North East

Heritage Data Source: NSW Crown Copyright - Office of Environment & Heritage
Creative Commons 4.0 © Commonwealth of Australia <https://creativecommons.org/licenses/by/4.0/>

Environmental Planning Instrument - Heritage

What are the EPI Heritage Items located within the dataset buffer?

Map Id	Name	Classification	Significance	EPI Name	Published Date	Commenced Date	Currency Date	Distance	Direction
I270	Warragamba Supply Scheme and Warragamba Emergency Scheme	Item - General	State	Wollondilly Local Environmental Plan 2011	01/10/2021	01/10/2021	18/03/2022	0m	On-site

Map Id	Name	Classification	Significance	EPI Name	Published Date	Commenced Date	Currency Date	Distance	Direction
C4	Warragamba Conservation Area	Conservation Area - General	Local	Wollondilly Local Environmental Plan 2011	01/10/2021	01/10/2021	18/03/2022	242m	South East

Heritage Data Source: NSW Crown Copyright - Planning & Environment

Creative Commons 4.0 © Commonwealth of Australia <https://creativecommons.org/licenses/by/4.0/>



Natural Hazards

Warragamba Dam Wall, Warragamba, NSW 2752

Bush Fire Prone Land

What are the nearest Bush Fire Prone Land Categories that exist within the dataset buffer?

Bush Fire Prone Land Category	Distance	Direction
Vegetation Category 1	0m	On-site
Vegetation Category 2	0m	On-site
Vegetation Buffer	0m	On-site

NSW Bush Fire Prone Land - © NSW Rural Fire Service under Creative Commons 4.0 International Licence

Ecological Constraints

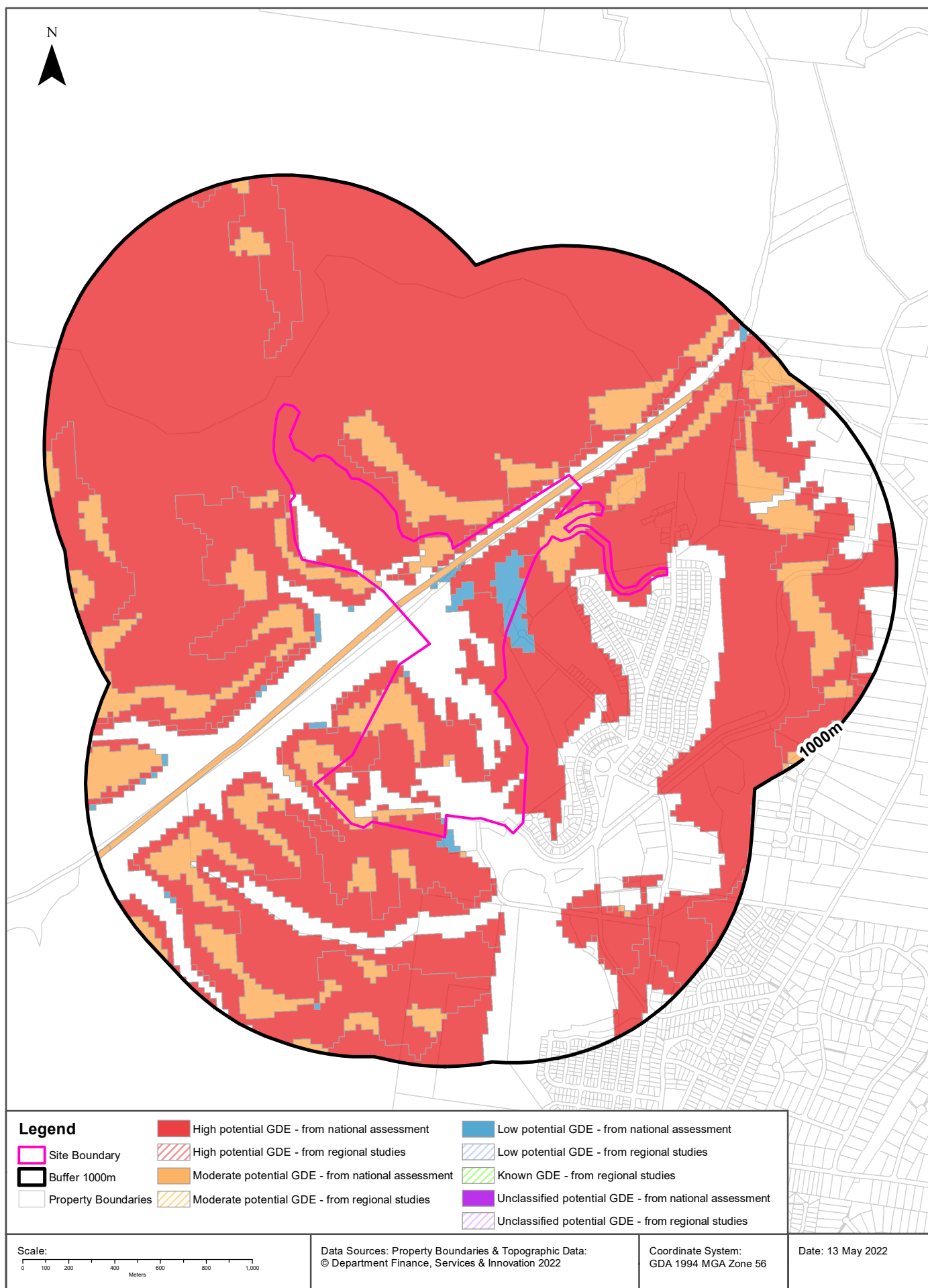
Warragamba Dam Wall, Warragamba, NSW 2752

Ramsar Wetlands

What Ramsar Wetland areas exist within the dataset buffer?

Map Id	Ramsar Name	Wetland Name	Designation Date	Source	Distance	Direction
N/A	No records in buffer					

Ramsar Wetlands Data Source: © Commonwealth of Australia - Department of Agriculture, Water and the Environment



Ecological Constraints

Warragamba Dam Wall, Warragamba, NSW 2752

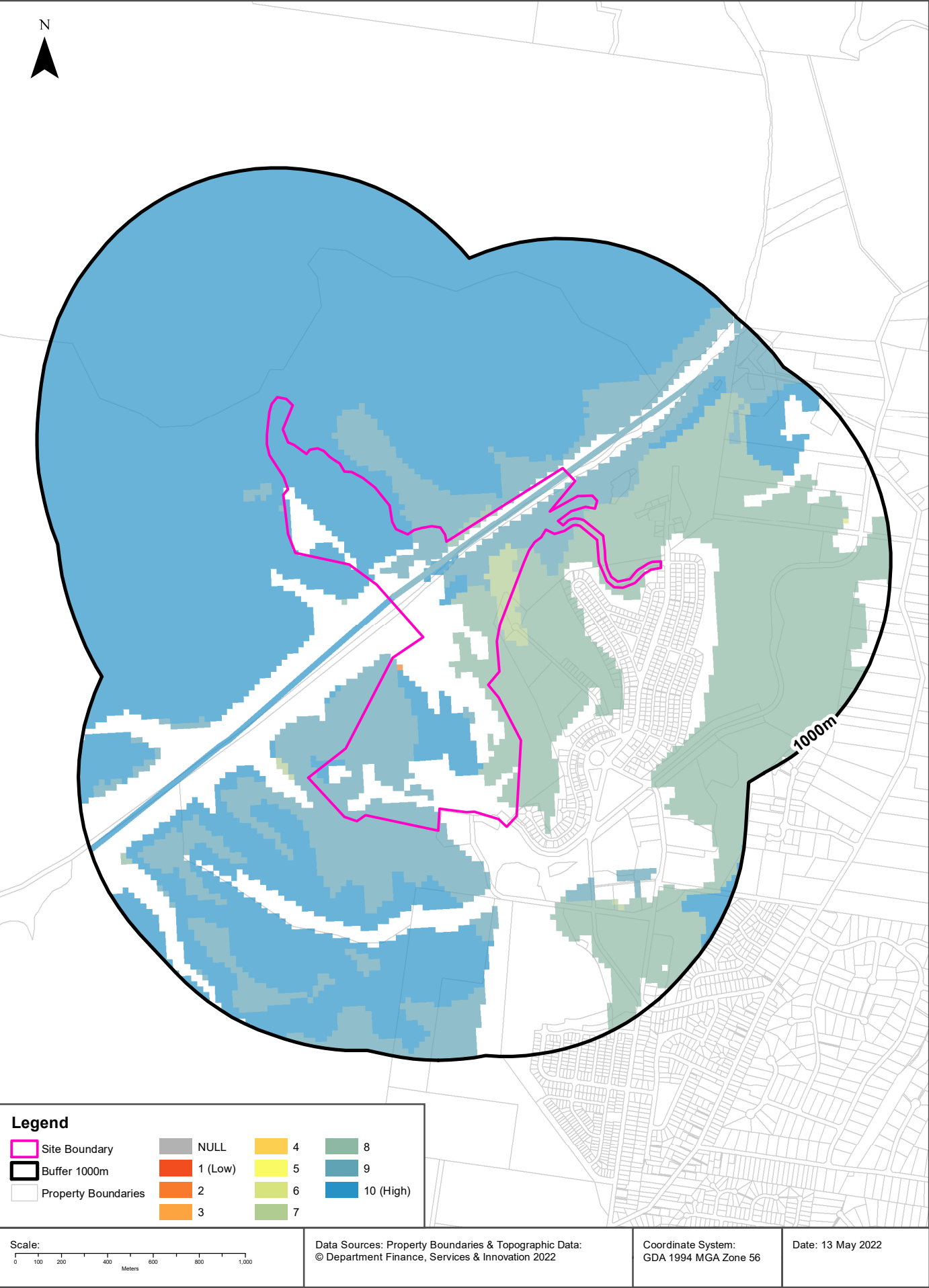
Groundwater Dependent Ecosystems Atlas

Type	GDE Potential	Geomorphology	Ecosystem Type	Aquifer Geology	Distance	Direction
Aquatic	Low potential GDE - from national assessment	Deeply dissected sandstone plateaus.	Wetland		0m	On-site
Terrestrial	Moderate potential GDE - from national assessment	Deeply dissected sandstone plateaus.	Vegetation	Consolidated sedimentary	0m	On-site
Terrestrial	High potential GDE - from national assessment	Deeply dissected sandstone plateaus.	Vegetation	Consolidated sedimentary	0m	On-site
Aquatic	Moderate potential GDE - from national assessment	Deeply dissected sandstone plateaus.	River		0m	On-site
Terrestrial	Low potential GDE - from national assessment	Deeply dissected sandstone plateaus.	Vegetation	Consolidated sedimentary	0m	On-site
Terrestrial	High potential GDE - from national assessment	Deeply dissected sandstone plateaus.	Vegetation		65m	South West
Terrestrial	Low potential GDE - from national assessment	Deeply dissected sandstone plateaus.	Vegetation		127m	North West
Aquatic	High potential GDE - from national assessment	Deeply dissected sandstone plateaus.	River		800m	North East

Groundwater Dependent Ecosystems Atlas Data Source: The Bureau of Meteorology
Creative Commons 3.0 © Commonwealth of Australia <http://creativecommons.org/licenses/by/3.0/au/deed.en>

Ecological Constraints - Inflow Dependent Ecosystems Likelihood

Warragamba Dam Wall, Warragamba, NSW 2752



Ecological Constraints

Warragamba Dam Wall, Warragamba, NSW 2752

Inflow Dependent Ecosystems Likelihood

Type	IDE Likelihood	Geomorphology	Ecosystem Type	Aquifer Geology	Distance	Direction
Terrestrial	9	Deeply dissected sandstone plateaus.	Vegetation	Consolidated sedimentary	0m	On-site
Terrestrial	7	Deeply dissected sandstone plateaus.	Vegetation	Consolidated sedimentary	0m	On-site
Aquatic	9	Deeply dissected sandstone plateaus.	River		0m	On-site
Aquatic	10	Deeply dissected sandstone plateaus.	Wetland		0m	On-site
Terrestrial	8	Deeply dissected sandstone plateaus.	Vegetation	Consolidated sedimentary	0m	On-site
Terrestrial	10	Deeply dissected sandstone plateaus.	Vegetation	Consolidated sedimentary	0m	On-site
Terrestrial	2	Deeply dissected sandstone plateaus.	Vegetation	Consolidated sedimentary	0m	On-site
Aquatic	10	Deeply dissected sandstone plateaus.	River		0m	On-site
Terrestrial	9	Deeply dissected sandstone plateaus.	Vegetation		65m	South West
Terrestrial	8	Deeply dissected sandstone plateaus.	Vegetation		127m	North West
Terrestrial	10	Deeply dissected sandstone plateaus.	Vegetation		135m	South West
Terrestrial	6	Deeply dissected sandstone plateaus.	Vegetation	Consolidated sedimentary	807m	East
Aquatic	9	Deeply dissected sandstone plateaus.	Wetland		936m	North East

Inflow Dependent Ecosystems Likelihood Data Source: The Bureau of Meteorology

Creative Commons 3.0 © Commonwealth of Australia <http://creativecommons.org/licenses/by/3.0/au/deed.en>

Ecological Constraints

Warragamba Dam Wall, Warragamba, NSW 2752

NSW BioNet Atlas

Species on the NSW BioNet Atlas that have a NSW or federal conservation status, a NSW sensitivity status, or are listed under a migratory species agreement, and are within 10km of the site?

Kingdom	Class	Scientific	Common	NSW Conservation Status	NSW Sensitivity Class	Federal Conservation Status	Migratory Species Agreements
Animalia	Amphibia	Heleioporus australiacus	Giant Burrowing Frog	Vulnerable	Not Sensitive	Vulnerable	
Animalia	Amphibia	Litoria aurea	Green and Golden Bell Frog	Endangered	Not Sensitive	Vulnerable	
Animalia	Amphibia	Pseudophryne australis	Red-crowned Toadlet	Vulnerable	Not Sensitive	Not Listed	
Animalia	Aves	Anthochaera phrygia	Regent Honeyeater	Critically Endangered	Not Sensitive	Critically Endangered	
Animalia	Aves	Apus pacificus	Fork-tailed Swift	Not Listed	Not Sensitive	Not Listed	ROKAMBA;CAMBA; JAMBA
Animalia	Aves	Artamus cyanopterus cyanopterus	Dusky Woodswallow	Vulnerable	Not Sensitive	Not Listed	
Animalia	Aves	Callocephalon fimbriatum	Gang-gang Cockatoo	Vulnerable	Category 3	Endangered	
Animalia	Aves	Calyptorhynchus lathami	Glossy Black-Cockatoo	Vulnerable	Category 2	Not Listed	
Animalia	Aves	Chthonicola sagittata	Speckled Warbler	Vulnerable	Not Sensitive	Not Listed	
Animalia	Aves	Cuculus optatus	Oriental Cuckoo	Not Listed	Not Sensitive	Not Listed	ROKAMBA;CAMBA; JAMBA
Animalia	Aves	Daphoenositta chrysoptera	Varied Sittella	Vulnerable	Not Sensitive	Not Listed	
Animalia	Aves	Ephippiorhynchus asiaticus	Black-necked Stork	Endangered	Not Sensitive	Not Listed	
Animalia	Aves	Gallinago hardwickii	Latham's Snipe	Not Listed	Not Sensitive	Not Listed	ROKAMBA;JAMBA
Animalia	Aves	Glossopsitta pusilla	Little Lorikeet	Vulnerable	Not Sensitive	Not Listed	
Animalia	Aves	Haliaeetus leucogaster	White-bellied Sea-Eagle	Vulnerable	Not Sensitive	Not Listed	
Animalia	Aves	Hieraaetus morphnoides	Little Eagle	Vulnerable	Not Sensitive	Not Listed	
Animalia	Aves	Hirundapus caudacutus	White-throated Needletail	Not Listed	Not Sensitive	Vulnerable	ROKAMBA;CAMBA; JAMBA
Animalia	Aves	Ixobrychus flavicollis	Black Bittern	Vulnerable	Not Sensitive	Not Listed	
Animalia	Aves	Lathamus discolor	Swift Parrot	Endangered	Category 3	Critically Endangered	
Animalia	Aves	Limosa limosa	Black-tailed Godwit	Vulnerable	Not Sensitive	Not Listed	ROKAMBA;CAMBA; JAMBA
Animalia	Aves	Lophoictinia isura	Square-tailed Kite	Vulnerable	Category 3	Not Listed	
Animalia	Aves	Melanodryas cucullata cucullata	Hooded Robin (south-eastern form)	Vulnerable	Not Sensitive	Not Listed	
Animalia	Aves	Ninox connivens	Barking Owl	Vulnerable	Category 3	Not Listed	
Animalia	Aves	Ninox strenua	Powerful Owl	Vulnerable	Category 3	Not Listed	
Animalia	Aves	Petroica boodang	Scarlet Robin	Vulnerable	Not Sensitive	Not Listed	
Animalia	Aves	Petroica phoenicea	Flame Robin	Vulnerable	Not Sensitive	Not Listed	
Animalia	Aves	Stagonopleura guttata	Diamond Firetail	Vulnerable	Not Sensitive	Not Listed	

Kingdom	Class	Scientific	Common	NSW Conservation Status	NSW Sensitivity Class	Federal Conservation Status	Migratory Species Agreements
Animalia	Aves	Tyto novaehollandiae	Masked Owl	Vulnerable	Category 3	Not Listed	
Animalia	Aves	Tyto tenebricosa	Sooty Owl	Vulnerable	Category 3	Not Listed	
Animalia	Gastropoda	Meridolum corneovirens	Cumberland Plain Land Snail	Endangered	Not Sensitive	Not Listed	
Animalia	Gastropoda	Pommerhelix duralensis	Dural Land Snail	Endangered	Not Sensitive	Endangered	
Animalia	Mammalia	Chalinolobus dwyeri	Large-eared Pied Bat	Vulnerable	Not Sensitive	Vulnerable	
Animalia	Mammalia	Dasyurus maculatus	Spotted-tailed Quoll	Vulnerable	Not Sensitive	Endangered	
Animalia	Mammalia	Falsistrellus tasmaniensis	Eastern False Pipistrelle	Vulnerable	Not Sensitive	Not Listed	
Animalia	Mammalia	Micronomus norfolkensis	Eastern Coastal Free-tailed Bat	Vulnerable	Not Sensitive	Not Listed	
Animalia	Mammalia	Miniopterus australis	Little Bent-winged Bat	Vulnerable	Not Sensitive	Not Listed	
Animalia	Mammalia	Miniopterus orianae oceanensis	Large Bent-winged Bat	Vulnerable	Not Sensitive	Not Listed	
Animalia	Mammalia	Myotis macropus	Southern Myotis	Vulnerable	Not Sensitive	Not Listed	
Animalia	Mammalia	Petauroides volans	Greater Glider	Not Listed	Not Sensitive	Vulnerable	
Animalia	Mammalia	Petaurus australis	Yellow-bellied Glider	Vulnerable	Not Sensitive	Not Listed	
Animalia	Mammalia	Petrogale penicillata	Brush-tailed Rock-wallaby	Endangered	Not Sensitive	Vulnerable	
Animalia	Mammalia	Phascogale cinerea	Koala	Vulnerable	Not Sensitive	Endangered	
Animalia	Mammalia	Potorous tridactylus	Long-nosed Potoroo	Vulnerable	Not Sensitive	Vulnerable	
Animalia	Mammalia	Pteropus poliocephalus	Grey-headed Flying-fox	Vulnerable	Not Sensitive	Vulnerable	
Animalia	Mammalia	Saccolaimus flaviventris	Yellow-bellied Sheath-tail-bat	Vulnerable	Not Sensitive	Not Listed	
Animalia	Mammalia	Scoteanax rueppellii	Greater Broad-nosed Bat	Vulnerable	Not Sensitive	Not Listed	
Animalia	Mammalia	Vespadelus troughtoni	Eastern Cave Bat	Vulnerable	Not Sensitive	Not Listed	
Animalia	Reptilia	Chelonia mydas	Green Turtle	Vulnerable	Not Sensitive	Vulnerable	
Animalia	Reptilia	Suta flagellum	Little Whip Snake	Vulnerable	Not Sensitive	Not Listed	
Plantae	Flora	Acacia clunies-rossiae	Kanangra Wattle	Vulnerable	Not Sensitive	Not Listed	
Plantae	Flora	Acacia terminalis subsp. Eastern Sydney	Sunshine wattle	Endangered	Not Sensitive	Endangered	
Plantae	Flora	Ancistrachne maidenii		Vulnerable	Not Sensitive	Not Listed	
Plantae	Flora	Dillwynia tenuifolia		Vulnerable	Not Sensitive	Not Listed	
Plantae	Flora	Diuris pedunculata	Small Snake Orchid	Endangered	Category 2	Endangered	
Plantae	Flora	Epacris purpurascens var. purpurascens		Vulnerable	Not Sensitive	Not Listed	
Plantae	Flora	Eucalyptus benthamii	Camden White Gum	Vulnerable	Not Sensitive	Vulnerable	
Plantae	Flora	Grammitis stenophylla	Narrow-leaf Finger Fern	Endangered	Category 3	Not Listed	
Plantae	Flora	Grevillea juniperina subsp. juniperina	Juniper-leaved Grevillea	Vulnerable	Not Sensitive	Not Listed	
Plantae	Flora	Grevillea parviflora subsp. parviflora	Small-flower Grevillea	Vulnerable	Not Sensitive	Vulnerable	

Kingdom	Class	Scientific	Common	NSW Conservation Status	NSW Sensitivity Class	Federal Conservation Status	Migratory Species Agreements
Plantae	Flora	<i>Leucopogon fletcheri</i> subsp. <i>fletcheri</i>		Endangered	Not Sensitive	Not Listed	
Plantae	Flora	<i>Macadamia tetraphylla</i>	Rough-shelled Bush Nut	Vulnerable	Not Sensitive	Vulnerable	
Plantae	Flora	<i>Marsdenia viridiflora</i> subsp. <i>viridiflora</i>	Native Pear	Endangered Population	Not Sensitive	Not Listed	
Plantae	Flora	<i>Melaleuca deanei</i>	Deane's Paperbark	Vulnerable	Not Sensitive	Vulnerable	
Plantae	Flora	<i>Micromyrtus minutiflora</i>		Endangered	Not Sensitive	Vulnerable	
Plantae	Flora	<i>Persoonia mollis</i> subsp. <i>revoluta</i>		Vulnerable	Not Sensitive	Not Listed	
Plantae	Flora	<i>Pimelea spicata</i>	Spiked Rice-flower	Endangered	Not Sensitive	Endangered	
Plantae	Flora	<i>Pomaderris queenslandica</i>	Scant Pomaderris	Endangered	Not Sensitive	Not Listed	
Plantae	Flora	<i>Pterostylis chaetophora</i>		Vulnerable	Category 2	Not Listed	
Plantae	Flora	<i>Pultenaea parviflora</i>		Endangered	Not Sensitive	Vulnerable	
Plantae	Flora	<i>Pultenaea villifera</i>		Endangered Population	Not Sensitive	Not Listed	
Plantae	Flora	<i>Rhodamnia rubescens</i>	Scrub Turpentine	Critically Endangered	Not Sensitive	Critically Endangered	
Plantae	Flora	<i>Tetratheca glandulosa</i>		Vulnerable	Not Sensitive	Not Listed	

Data does not include NSW category 1 sensitive species.

NSW BioNet: © State of NSW and Office of Environment and Heritage

Location Confidences

Where Lotsearch has had to georeference features from supplied addresses, a location confidence has been assigned to the data record. This indicates a confidence to the positional accuracy of the feature. Where applicable, a code is given under the field heading “LC” or “LocConf”. These codes lookup to the following location confidences:

LC Code	Location Confidence
Premise Match	Georeferenced to the site location / premise or part of site
Area Match	Georeferenced to an approximate or general area
Road Match	Georeferenced to a road or rail corridor
Road Intersection	Georeferenced to a road intersection
Buffered Point	A point feature buffered to x metres
Adjacent Match	Land adjacent to a georeferenced feature
Network of Features	Georeferenced to a network of features
Suburb Match	Georeferenced to a suburb boundary
As Supplied	Spatial data supplied by provider

USE OF REPORT - APPLICABLE TERMS

The following terms apply to any person (End User) who is given the Report by the person who purchased the Report from Lotsearch Pty Ltd (ABN: 89 600 168 018) (Lotsearch) or who otherwise has access to the Report (Terms). The contract terms that apply between Lotsearch and the purchaser of the Report are specified in the order form pursuant to which the Report was ordered and the terms set out below are of no effect as between Lotsearch and the purchaser of the Report.

1. End User acknowledges and agrees that:
 - (a) the Report is compiled from or using content (**Third Party Content**) which is comprised of:
 - (i) content provided to Lotsearch by third party content suppliers with whom Lotsearch has contractual arrangements or content which is freely available or methodologies licensed to Lotsearch by third parties with whom Lotsearch has contractual arrangements (**Third Party Content Suppliers**); and
 - (ii) content which is derived from content described in paragraph (i);
 - (b) Neither Lotsearch nor Third Party Content Suppliers takes any responsibility for or give any warranty in relation to the accuracy or completeness of any Third Party Content included in the Report including any contaminated land assessment or other assessment included as part of a Report;
 - (c) the Third Party Content Suppliers do not constitute an exhaustive set of all repositories or sources of information available in relation to the property which is the subject of the Report (**Property**) and accordingly neither Lotsearch nor Third Party Content Suppliers gives any warranty in relation to the accuracy or completeness of the Third Party Content incorporated into the report including any contaminated land assessment or other assessment included as part of a Report;
 - (d) Reports are generated at a point in time (as specified by the date/time stamp appearing on the Report) and accordingly the Report is based on the information available at that point in time and Lotsearch is not obliged to undertake any additional reporting to take into consideration any information that may become available between the point in time specified by the date/time stamp and the date on which the Report was provided by Lotsearch to the purchaser of the Report;
 - (e) Reports must be used or reproduced in their entirety and End User must not reproduce or make available to other persons only parts of the Report;
 - (f) Lotsearch has not undertaken any physical inspection of the property;
 - (g) neither Lotsearch nor Third Party Content Suppliers warrants that all land uses or features whether past or current are identified in the Report;
 - (h) the Report does not include any information relating to the actual state or condition of the Property;
 - (i) the Report should not be used or taken to indicate or exclude actual fitness or unfitness of Land or Property for any particular purpose
 - (j) the Report should not be relied upon for determining saleability or value or making any other decisions in relation to the Property and in particular should not be taken to be a rating or assessment of the desirability or market value of the property or its features; and
 - (k) the End User should undertake its own inspections of the Land or Property to satisfy itself that there are no defects or failures
2. The End User may not make the Report or any copies or extracts of the report or any part of it available to any other person. If End User wishes to provide the Report to any other person or make extracts or copies of the Report, it must contact the purchaser of the Report before doing so to ensure the proposed use is consistent with the contract terms between Lotsearch and the purchaser.
3. Neither Lotsearch (nor any of its officers, employees or agents) nor any of its Third Party Content Suppliers will have any liability to End User or any person to whom End User provides the Report and End User must not represent that Lotsearch or any of its Third Party Content Suppliers accepts liability to any such person or make any other representation to any such person on behalf of Lotsearch or any Third Party Content Supplier.
4. The End User hereby to the maximum extent permitted by law:
 - (a) acknowledges that the Lotsearch (nor any of its officers, employees or agents), nor any of its Third Party Content Supplier have any liability to it under or in connection with the

- Report or these Terms;
- (b) waives any right it may have to claim against Third Party Content Supplier in connection with the Report, or the negotiation of, entry into, performance of, or termination of these Terms; and
 - (c) releases each Third Party Content Supplier from any claim it may have otherwise had in connection with the Report, or the negotiation of, entry into, performance of, or termination of these Terms.
5. The End User acknowledges that any Third Party Supplier shall be entitled to plead the benefits conferred on it under clause 4, despite not being a party to these terms.
 6. End User must not remove any copyright notices, trade marks, digital rights management information, other embedded information, disclaimers or limitations from the Report or authorise any person to do so.
 7. End User acknowledges and agrees that Lotsearch and Third Party Content Suppliers retain ownership of all copyright, patent, design right (registered or unregistered), trade marks (registered or unregistered), database right or other data right, moral right or know how or any other intellectual property right in any Report or any other item, information or data included in or provided as part of a Report.
 8. To the extent permitted by law and subject to paragraph 9, all implied terms, representations and warranties whether statutory or otherwise relating to the subject matter of these Terms other than as expressly set out in these Terms are excluded.
 9. Subject to paragraph 6, Lotsearch excludes liability to End User for loss or damage of any kind, however caused, due to Lotsearch's negligence, breach of contract, breach of any law, in equity, under indemnities or otherwise, arising out of all acts, omissions and events whenever occurring.
 10. Lotsearch acknowledges that if, under applicable State, Territory or Commonwealth law, End User is a consumer certain rights may be conferred on End User which cannot be excluded, restricted or modified. If so, and if that law applies to Lotsearch, then, Lotsearch's liability is limited to the greater of an amount equal to the cost of resupplying the Report and the maximum extent permitted under applicable laws.
 11. Subject to paragraph 9, neither Lotsearch nor the End User is liable to the other for:
 - (a) any indirect, incidental, consequential, special or exemplary damages arising out of or in relation to the Report or these Terms; or
 - (b) any loss of profit, loss of revenue, loss of interest, loss of data, loss of goodwill or loss of business opportunities, business interruption arising directly or indirectly out of or in relation to the Report or these Terms,
 irrespective of how that liability arises including in contract or tort, liability under indemnity or for any other common law, equitable or statutory cause of action or otherwise.
 12. These Terms are subject to New South Wales law.