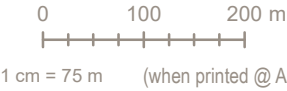
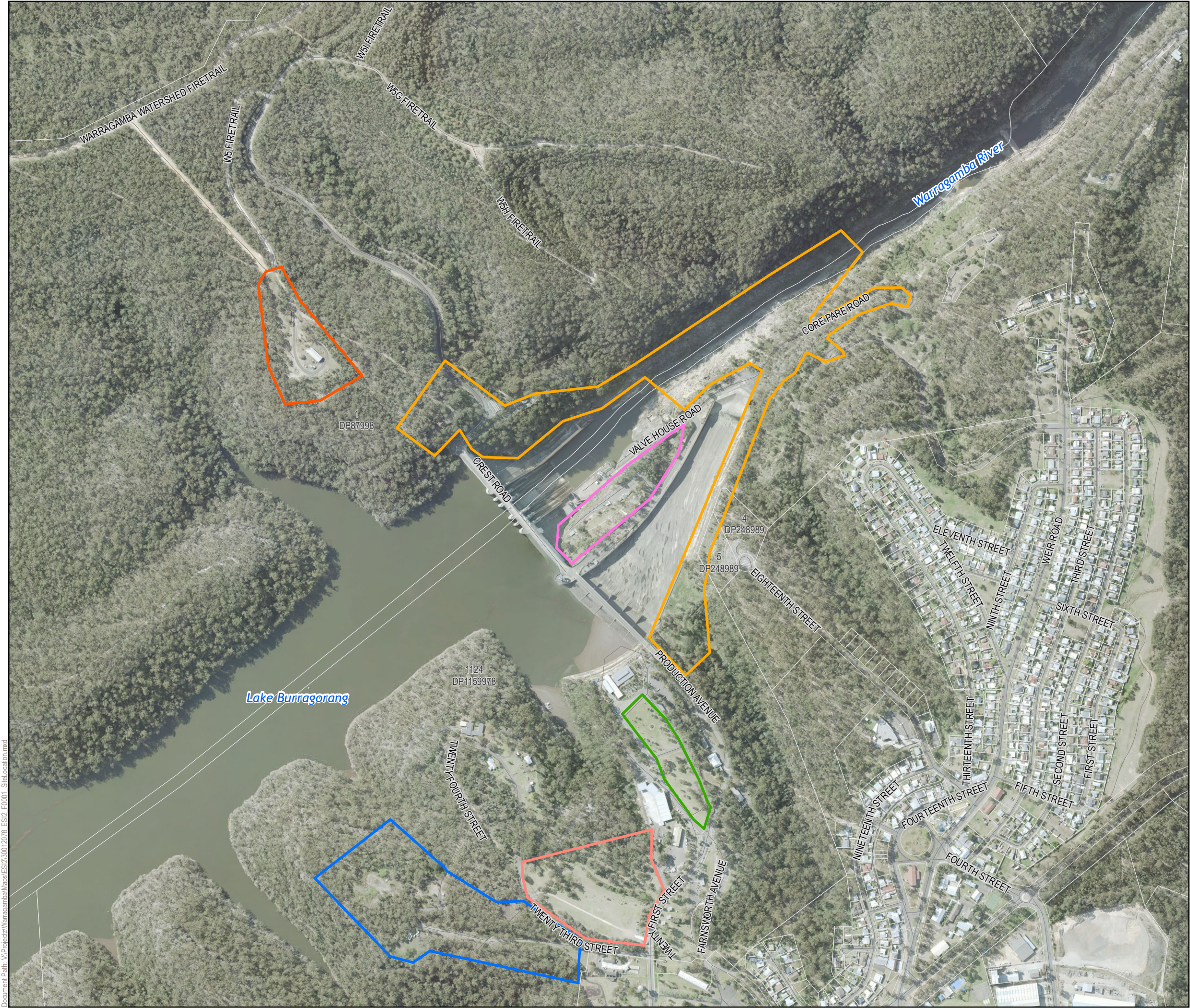


Appendix A – Site figures



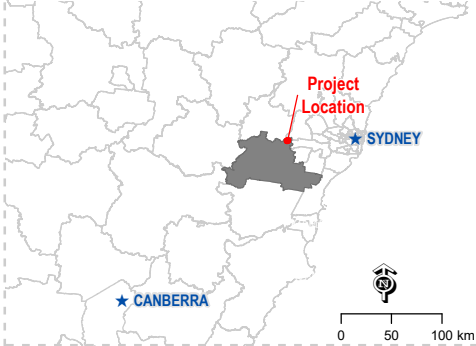
SENSITIVE: NSW GOVERNMENT

LEGEND

Construction Footprint

-  Site 1 – Former painters/grit blasting area
-  Site 2 - Proposed vegetation clearance area
-  Site 3 - Terraced Gardens
-  Site 4 - Haviland Park
-  Site 5a - Materials storage/former housing
-  Site 5b - Heliport/former housing
-  Cadastre

PROJECT LOCATION
NSW | Wollondilly | Wollondilly Shire Council (LGA)



Data Sources:
1. Contours @ ELVIS - Elevation and Depth - Foundation Spatial Data, 2020
2. Localities, Roads, LGA, Base Data @ Road Net, 2020
3. MetroMap Imagery © Aerometrex Pty Ltd
4. NSW Transport Theme © Spatial Services 2021

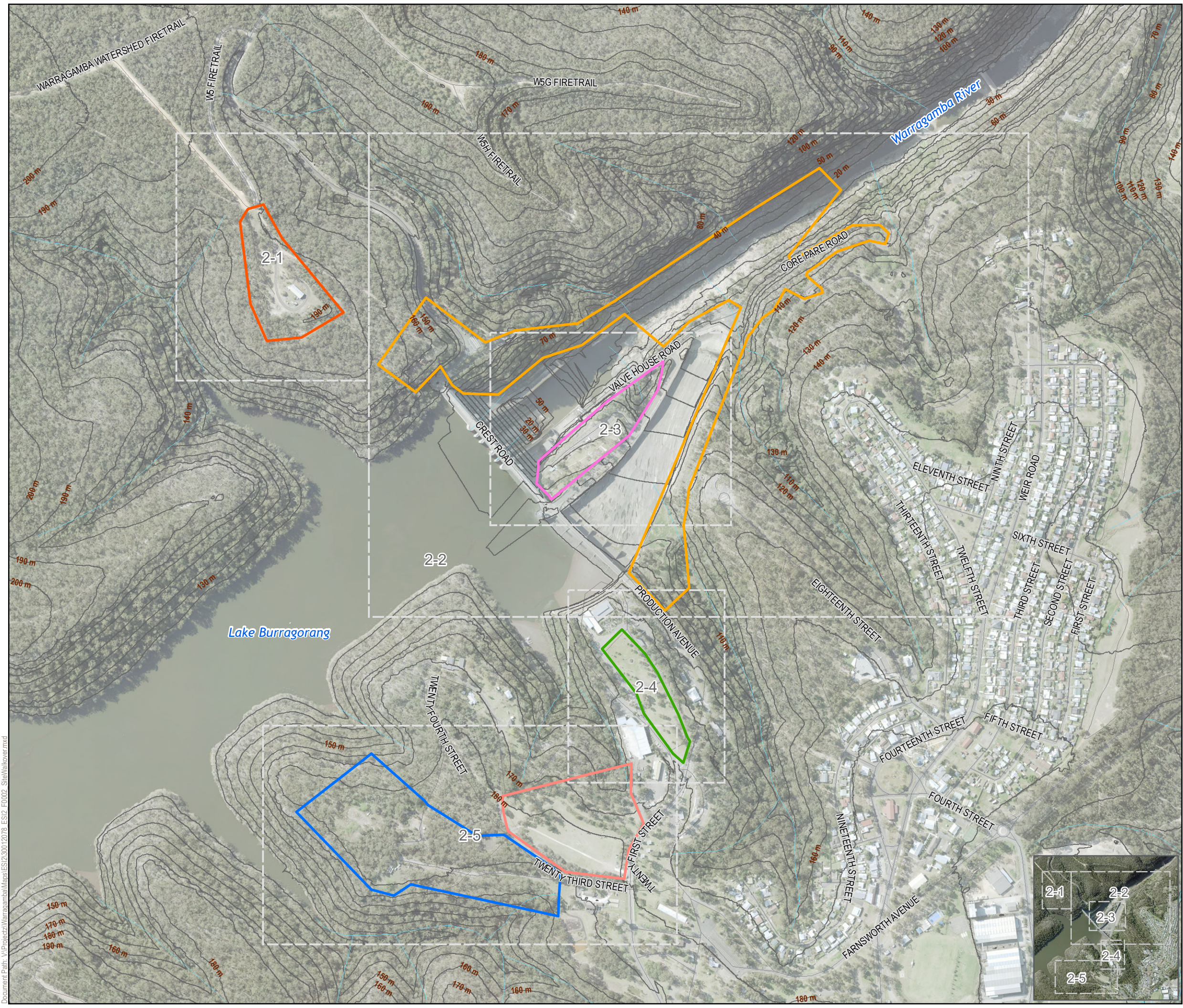
Disclaimer:
(insert disclaimer similar to this example)
© SMEC Australia Pty Ltd 2017. All Rights Reserved. While all reasonable care has been taken to ensure the information contained on this map is up to date and accurate, this map contains data from a number of sources - no warranty is given that the information contained on this is free from error or omission. Any reliance placed on such information shall be at the sole risk of the user. Please verify the accuracy of all information prior to using it. This map is not a design document. SMEC shall bear no responsibility or liability for any errors, faults, defects, or omissions in the information.

**Warragamba Dam Wall Raising
Proposed Construction Disturbance Areas
Preliminary Site Investigation**

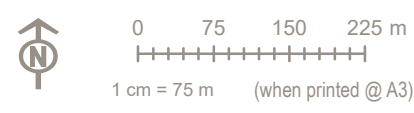
Site Location and Layout

PROJECT #: 30013187
CREATED BY: FA
LAST MODIFIED: FA13847, 3/06/2022
VERSION: Draft

FIGURE 1



GDA 1994 MGA Zone 56





SENSITIVE: NSW GOVERNMENT

LEGEND

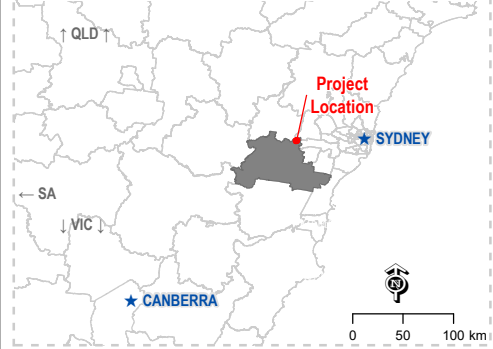
Construction Footprint

-  Site 1 – Former painters/grit blasting area
-  Site 2 - Proposed vegetation clearance area
-  Site 3 - Terraced Gardens
-  Site 4 - Haviland Park
-  Site 5a - Materials storage/former housing
-  Site 5b - Heliport/former housing

Contours

-  10 m Contour Line
-  Watercourse

PROJECT LOCATION
NSW | Wollondilly | Wollondilly Shire Council (LGA)



- Data Sources:**
- Contours @ ELVIS - Elevation and Depth - Foundation Spatial Data, 2020
 - Localities, Roads, LGA, Base Data @ Road Net, 2020
 - MetroMap Imagery © Aerometrex Pty Ltd
 - NSW Transport Theme © Spatial Services 2021

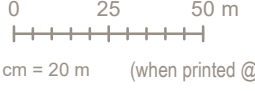
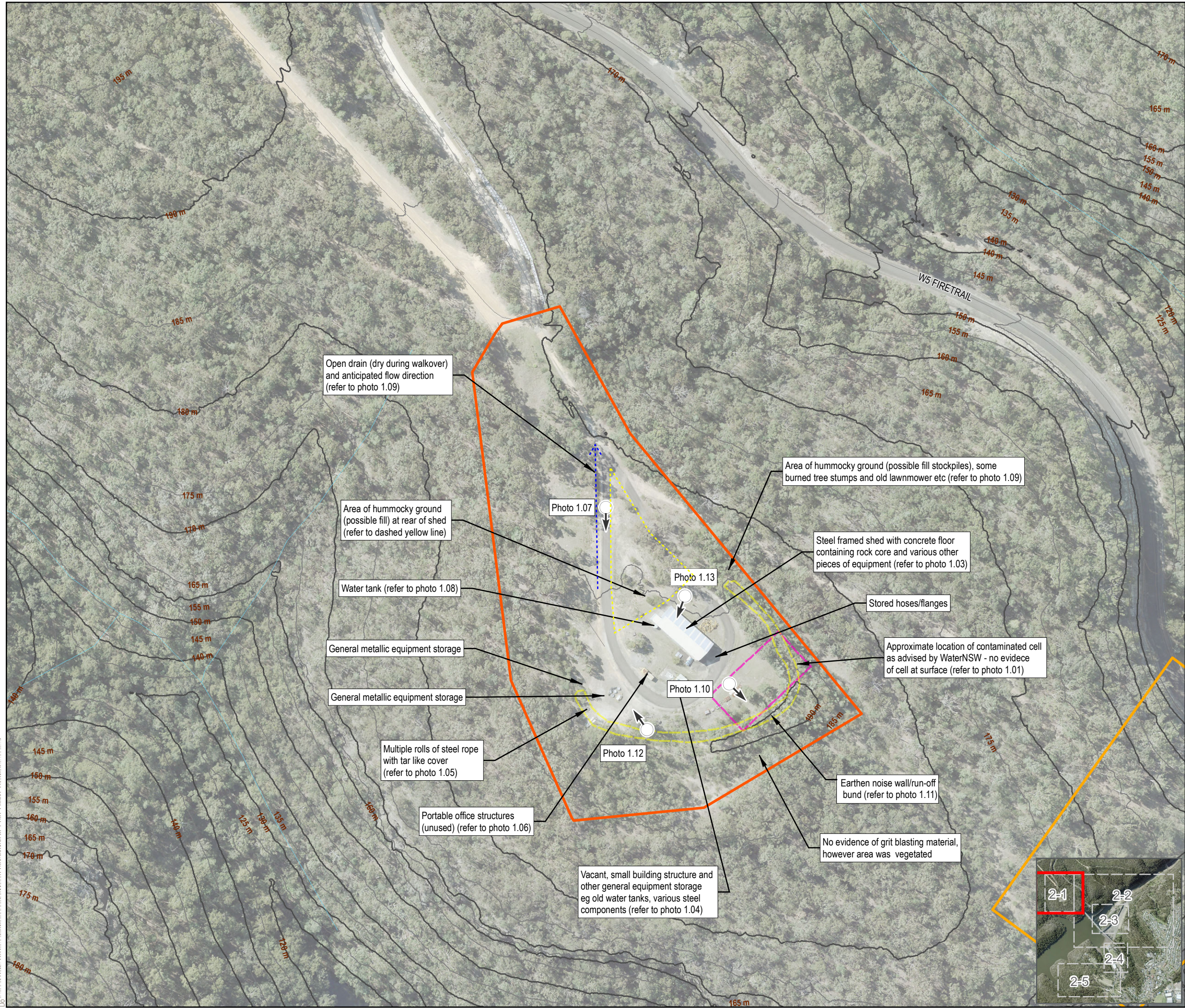
Disclaimer:
(insert disclaimer similar to this example)
© SMEC Australia Pty Ltd 2017. All Rights Reserved. While all reasonable care has been taken to ensure the information contained on this map is up to date and accurate, this map contains data from a number of sources - no warranty is given that the information contained on this is free from error or omission. Any reliance placed on such information shall be at the sole risk of the user. Please verify the accuracy of all information prior to using it. This map is not a design document. SMEC shall bear no responsibility or liability for any errors, faults, defects, or omissions in the information.

**Warragamba Dam Wall Raising
Proposed Construction Disturbance Areas
Preliminary Site Investigation**

Site Layout and Site Walkover Observations

PROJECT #: 30013187
CREATED BY: FA
LAST MODIFIED: FA13847, 3/06/2022
VERSION: Draft

FIGURE 2-0



SENSITIVE: NSW GOVERNMENT

LEGEND

Construction Footprint

- Site 1 – Former painters/grit blasting area
- Site 2 - Proposed vegetation clearance area

Areas of Environmental Concern

- AEC-3: Areas of stockpiling/filling (unknown origin and/or quality)
- AEC-6: Known contaminated cell

Contours

10 m Contour Line

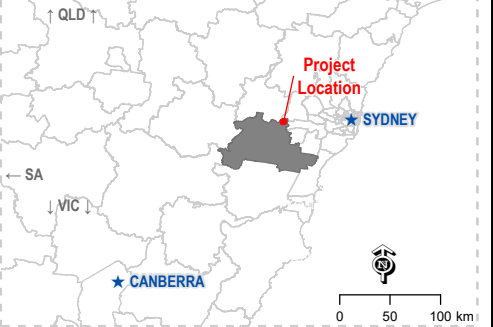
5 m Contour Line

Watercourse



Photo and Direction

PROJECT LOCATION
NSW | Wollondilly | Wollondilly Shire Council (LGA)



Data Sources:
1. Contours @ ELVIS - Elevation and Depth - Foundation Spatial Data, 2020
2. Localities, Roads, LGA, Base Data @ Road Net, 2020
3. MetroMap Imagery @ Aerometrex Pty Ltd
4. NSW Transport Theme @ Spatial Services 2021

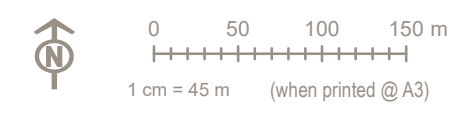
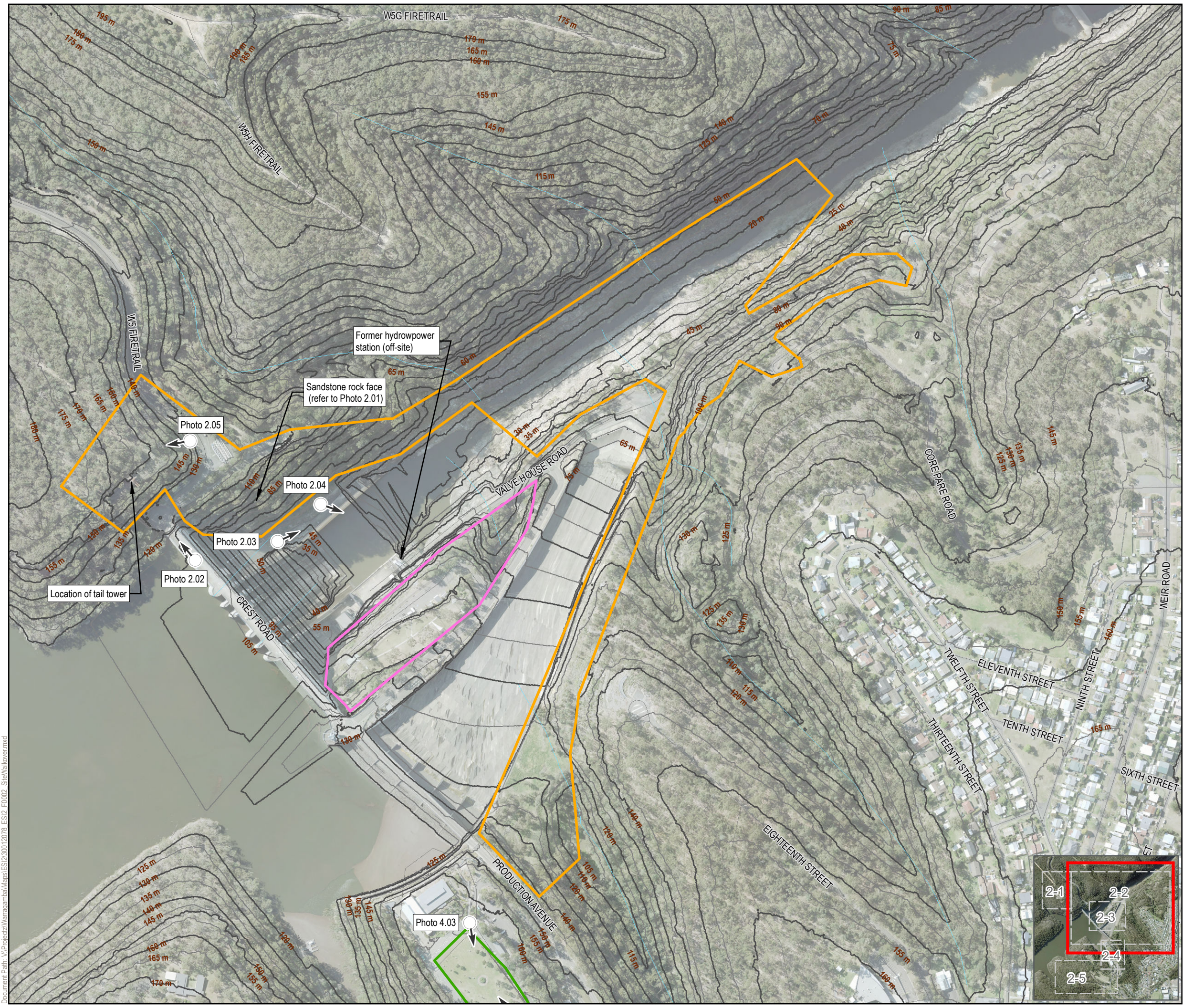
Disclaimer:
(insert disclaimer similar to this example)
© SMEC Australia Pty Ltd 2017. All Rights Reserved. While all reasonable care has been taken to ensure the information contained on this map is up to date and accurate, this map contains data from a number of sources - no warranty is given that the information contained on this is free from error or omission. Any reliance placed on such information shall be at the sole risk of the user. Please verify the accuracy of all information prior to using it. This map is not a design document. SMEC shall bear no responsibility or liability for any errors, faults, defects, or omissions in the information.

Warragamba Dam Wall Raising
Proposed Construction Disturbance Areas
Preliminary Site Investigation

Site Layout and Site Walkover Observations

PROJECT #: 30013187
CREATED BY: FA
LAST MODIFIED: FA13847, 3/06/2022
VERSION: Draft

FIGURE 2-1



SENSITIVE: NSW GOVERNMENT

LEGEND

Construction Footprint

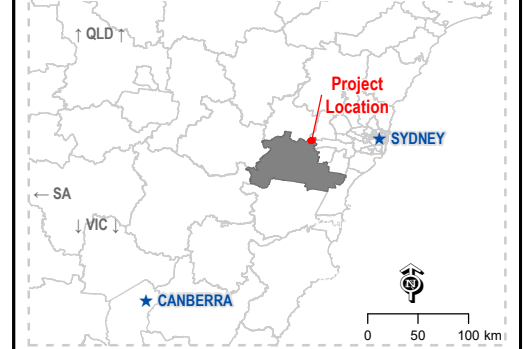
- Site 2 - Proposed vegetation clearance area
- Site 3 - Terraced Gardens
- Site 4 - Haviland Park

Contours

- 10 m Contour Line
- 5 m Contour Line
- Watercourse

- Photo and Direction

PROJECT LOCATION
NSW | Wollondilly | Wollondilly Shire Council (LGA)



- Data Sources:**
- Contours @ ELVIS - Elevation and Depth - Foundation Spatial Data, 2020
 - Localities, Roads, LGA, Base Data @ Road Net, 2020
 - MetroMap Imagery © Aerometrex Pty Ltd
 - NSW Transport Theme © Spatial Services 2021

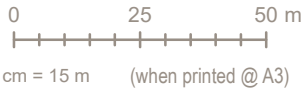
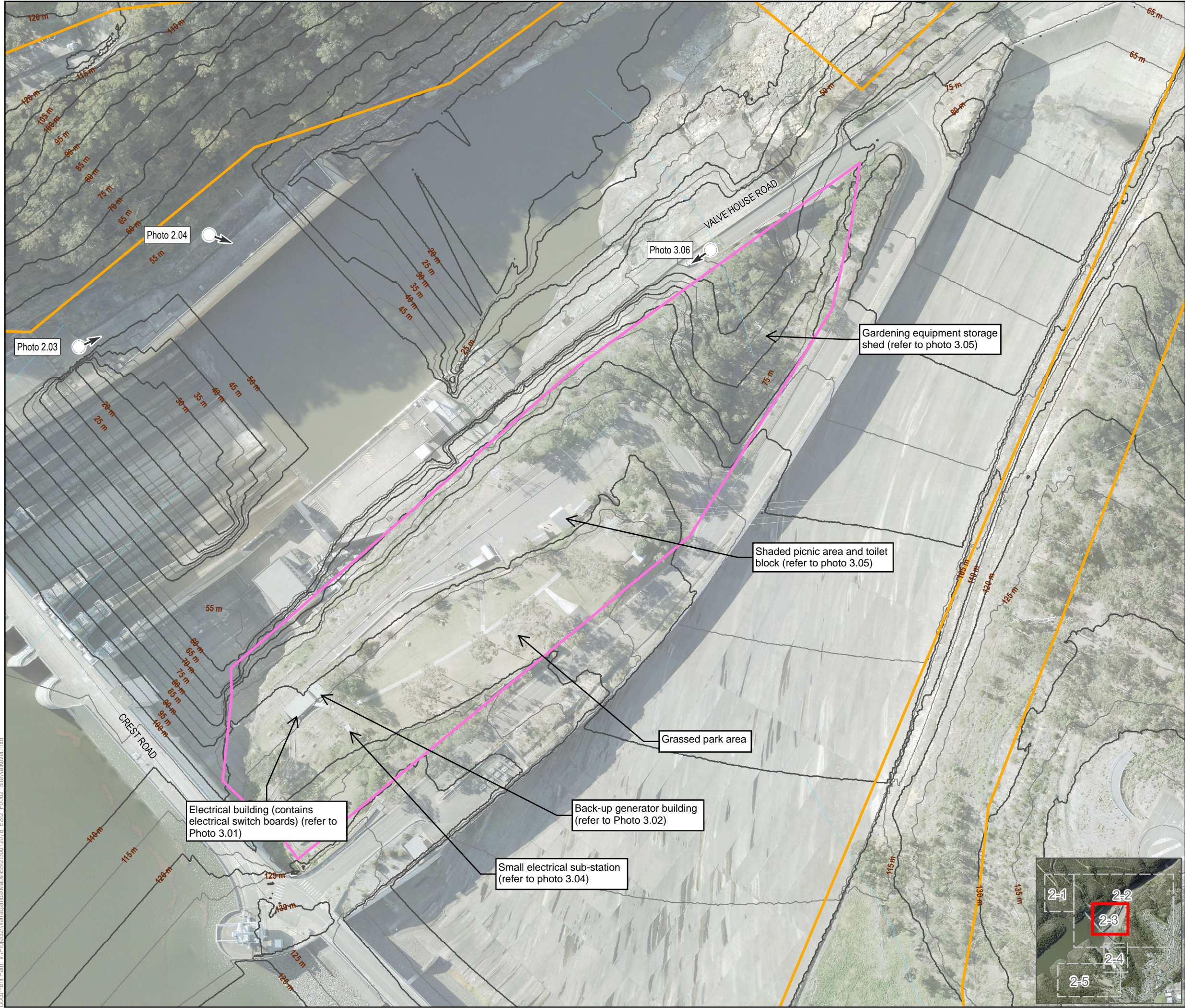
Disclaimer:
(insert disclaimer similar to this example)
© SMEC Australia Pty Ltd 2017. All Rights Reserved. While all reasonable care has been taken to ensure the information contained on this map is up to date and accurate, this map contains data from a number of sources - no warranty is given that the information contained on this is free from error or omission. Any reliance placed on such information shall be at the sole risk of the user. Please verify the accuracy of all information prior to using it. This map is not a design document. SMEC shall bear no responsibility or liability for any errors, faults, defects, or omissions in the information.

Warragamba Dam Wall Raising
Proposed Construction Disturbance Areas
Preliminary Site Investigation

Site Layout and Site Walkover Observations

PROJECT #:	30013187
CREATED BY:	FA
LAST MODIFIED:	FA13847, 3/06/2022
VERSION:	Draft

FIGURE 2-2



SENSITIVE: NSW GOVERNMENT

LEGEND

Construction Footprint

- Site 2 - Proposed vegetation clearance area
- Site 3 - Terraced Gardens

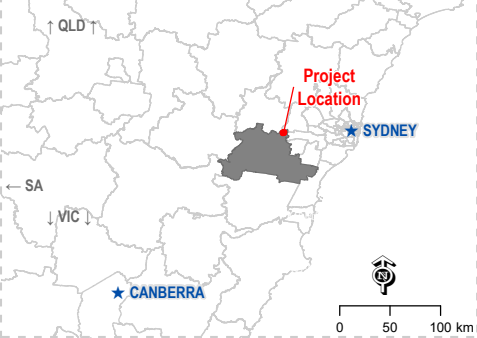
Contours

- 10 m Contour Line
- 5 m Contour Line
- Watercourse



Photo and Direction

PROJECT LOCATION
NSW | Wollondilly | Wollondilly Shire Council (LGA)



Data Sources:
1. Contours @ ELVIS - Elevation and Depth - Foundation Spatial Data, 2020
2. Localities, Roads, LGA, Base Data @ Road Net, 2020
3. MetroMap Imagery @ Aerometrex Pty Ltd
4. NSW Transport Theme @ Spatial Services 2021

Disclaimer:
(insert disclaimer similar to this example)
© SMEC Australia Pty Ltd 2017. All Rights Reserved. While all reasonable care has been taken to ensure the information contained on this map is up to date and accurate, this map contains data from a number of sources - no warranty is given that the information contained on this is free from error or omission. Any reliance placed on such information shall be at the sole risk of the user. Please verify the accuracy of all information prior to using it. This map is not a design document. SMEC shall bear no responsibility or liability for any errors, faults, defects, or omissions in the information.

Warragamba Dam Wall Raising
Proposed Construction Disturbance Areas
Preliminary Site Investigation

Site Layout and Site Walkover Observations

PROJECT #: 30013187
CREATED BY: FA
LAST MODIFIED: FA13847, 3/06/2022
VERSION: Draft



FIGURE 2-3






SENSITIVE: NSW GOVERNMENT


LEGEND

Construction Footprint

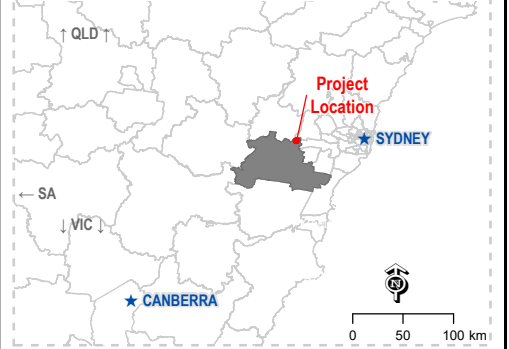
-  Site 2 - Proposed vegetation clearance area
-  Site 4 - Haviland Park
-  Site 5b - Heliport/former housing

Contours

-  10 m Contour Line
-  5 m Contour Line
-  Watercourse

-  Photo and Direction

PROJECT LOCATION
NSW | Wollondilly | Wollondilly Shire Council (LGA)



Data Sources:
1. Contours @ ELVIS - Elevation and Depth - Foundation Spatial Data, 2020
2. Localities, Roads, LGA, Base Data @ Road Net, 2020
3. MetroMap Imagery © Aerometrex Pty Ltd
4. NSW Transport Theme © Spatial Services 2021

Disclaimer:
(insert disclaimer similar to this example)
© SMEC Australia Pty Ltd 2017. All Rights Reserved. While all reasonable care has been taken to ensure the information contained on this map is up to date and accurate, this map contains data from a number of sources - no warranty is given that the information contained on this is free from error or omission. Any reliance placed on such information shall be at the sole risk of the user. Please verify the accuracy of all information prior to using it. This map is not a design document. SMEC shall bear no responsibility or liability for any errors, faults, defects, or omissions in the information.

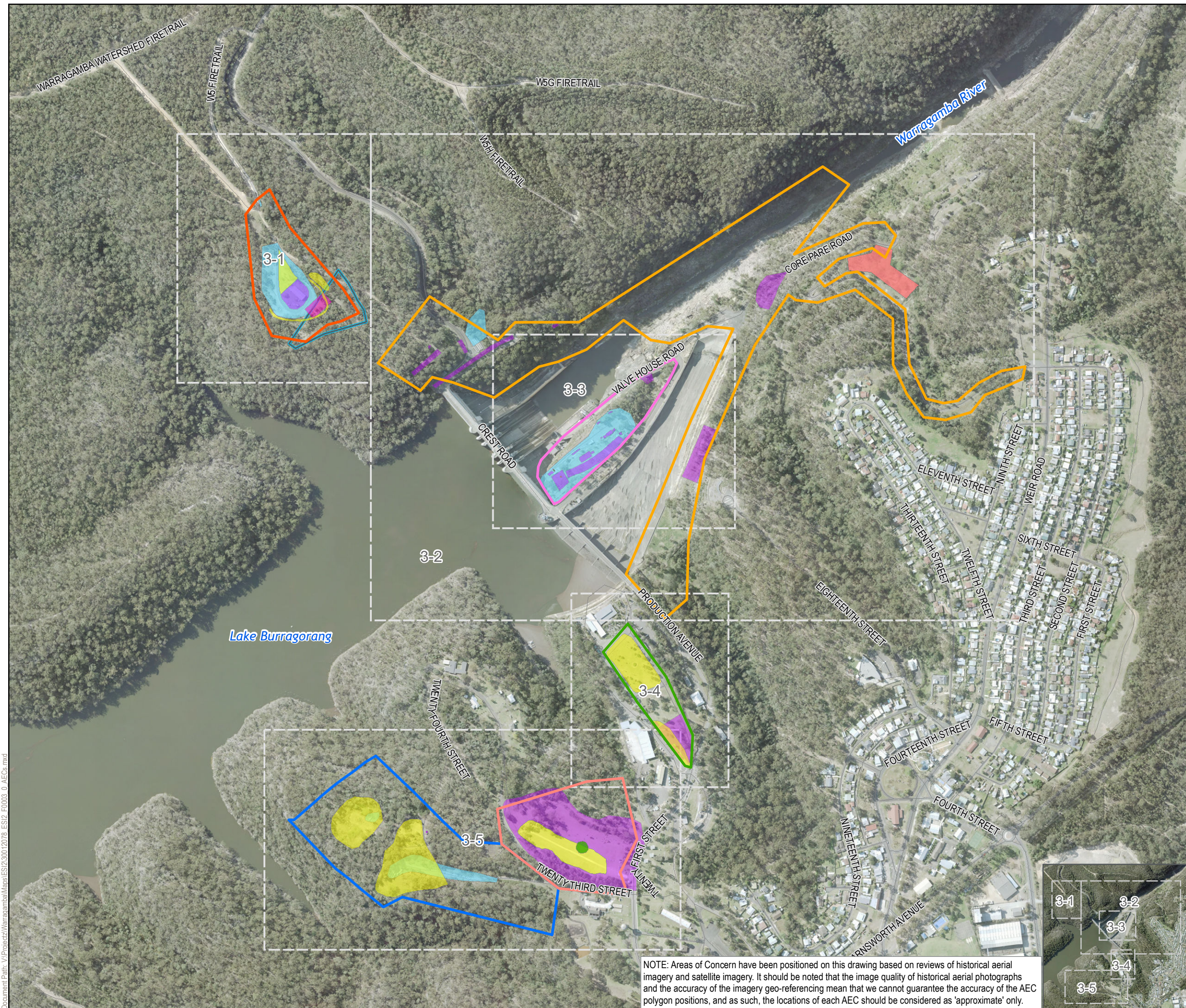
Warragamba Dam Wall Raising
Proposed Construction Disturbance Areas
Preliminary Site Investigation

Site Layout and Site Walkover Observations

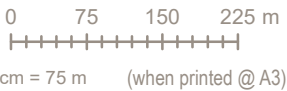
PROJECT #: 30013187
CREATED BY: FA
LAST MODIFIED: FA13847, 3/06/2022
VERSION: Draft

FIGURE 2-4





NOTE: Areas of Concern have been positioned on this drawing based on reviews of historical aerial imagery and satellite imagery. It should be noted that the image quality of historical aerial photographs and the accuracy of the imagery geo-referencing mean that we cannot guarantee the accuracy of the AEC polygon positions, and as such, the locations of each AEC should be considered as 'approximate' only.



SENSITIVE: NSW GOVERNMENT

LEGEND

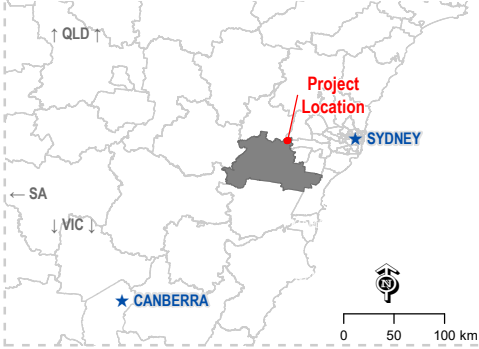
AEC Sites

- Site 1 – Former painters/grit blasting area
- Site 2 – Proposed vegetation clearance area
- Site 3 – Terraced Gardens
- Site 4 – Haviland Park
- Site 5a – Materials storage/former housing
- Site 5b – Heliport/former housing

Areas of Environmental Concern

- AEC-1: Former/existing building structures (from weathering and/or ineffective demolition of hazardous building materials)
- AEC-2: Historical and/or existing equipment storage areas and historical construction areas
- AEC-3: Areas of stockpiling/filling (unknown origin and/or quality)
- AEC-4: Fuel storage/re-fuelling (from possible leaks and/or spills)
- AEC-5: Electrical sub-station (from possible leaks of insulation oils)
- AEC-6: Known contaminated cell
- AEC-7: Area of potential metal contamination from grit blasting activities
- AEC-8: Core park road dump area (reported to contain 20 x 44 gallon drums)

PROJECT LOCATION
NSW | Wollondilly | Wollondilly Shire Council (LGA)



- Data Sources:**
- 1. Contours @ ELVIS - Elevation and Depth - Foundation Spatial Data, 2020
 - 2. Localities, Roads, LGA, Base Data @ Road Net, 2020
 - 3. MetroMap Imagery © Aerometrex Pty Ltd
 - 4. NSW Transport Theme © Spatial Services 2021

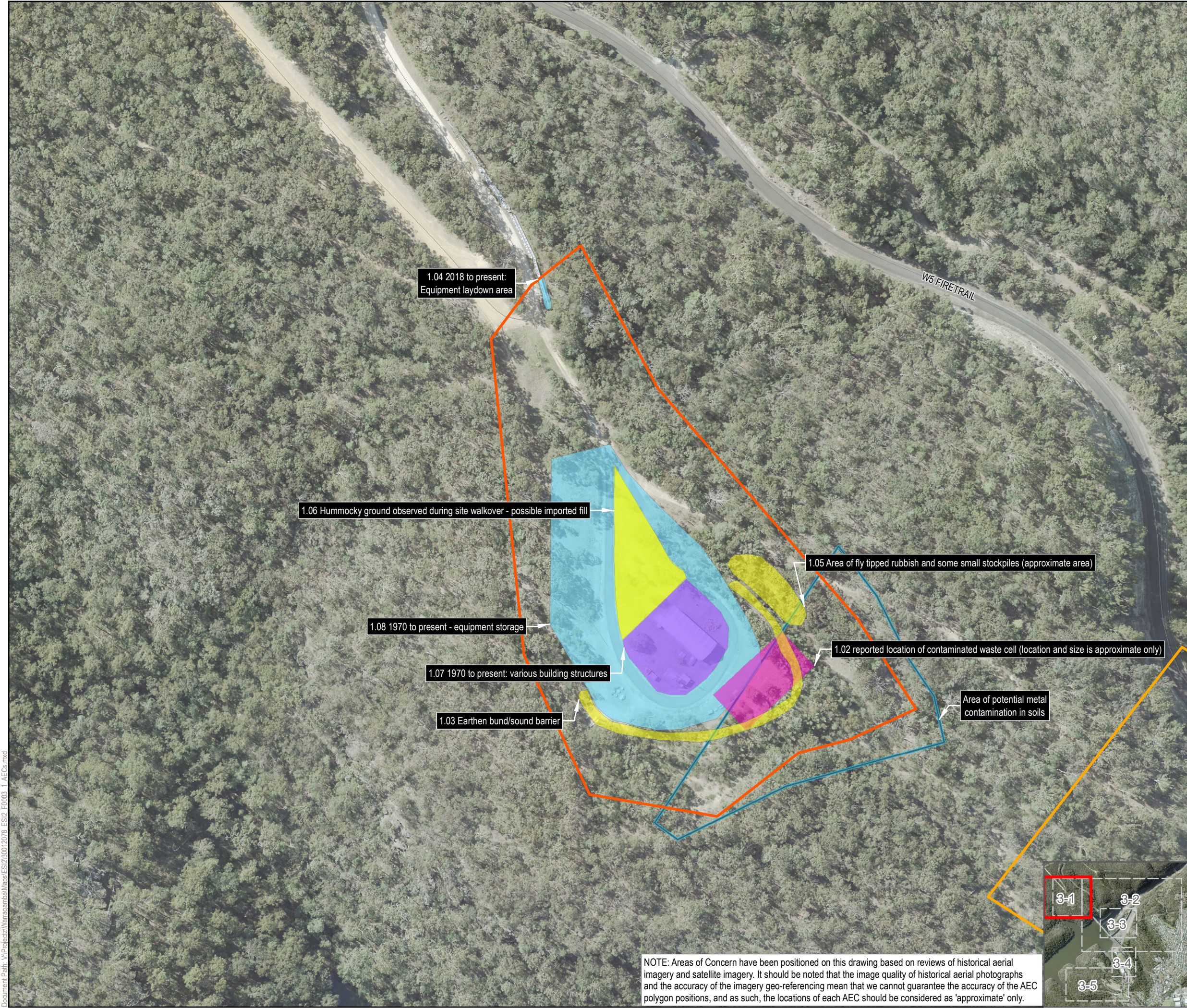
Disclaimer:
(insert disclaimer similar to this example)
© SMEC Australia Pty Ltd 2017. All Rights Reserved. While all reasonable care has been taken to ensure the information contained on this map is up to date and accurate, this map contains data from a number of sources - no warranty is given that the information contained on this is free from error or omission. Any reliance placed on such information shall be at the sole risk of the user. Please verify the accuracy of all information prior to using it. This map is not a design document. SMEC shall bear no responsibility or liability for any errors, faults, defects, or omissions in the information.

**Warragamba Dam Wall Raising
Proposed Construction Disturbance Areas
Preliminary Site Investigation**

Areas of Environmental Concern

PROJECT #: 30013187
CREATED BY: FA
LAST MODIFIED: FA13847, 3/06/2022
VERSION: Draft

FIGURE 3-0



0 25 50 m

1 cm = 20 m (when printed @ A3)

SENSITIVE: NSW GOVERNMENT

LEGEND

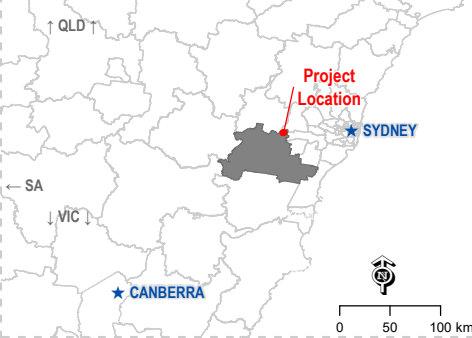
AEC Sites

- Site 1 – Former painters/grit blasting area
- Site 2 - Proposed vegetation clearance area

Areas of Environmental Concern

- AEC-1: Former/existing building structures (from weathering and/or ineffective demolition of hazardous building materials)
- AEC-2: Historical and/or existing equipment storage areas and historical construction areas
- AEC-3: Areas of stockpiling/filling (unknown origin and/or quality)
- AEC-6: Known contaminated cell
- AEC-7: Area of potential metal contamination from grit blasting activities

PROJECT LOCATION
NSW | Wollondilly | Wollondilly Shire Council (LGA)



Data Sources:
1. Contours @ ELVIS - Elevation and Depth - Foundation Spatial Data, 2020
2. Localities, Roads, LGA, Base Data @ Road Net, 2020
3. MetroMap Imagery © Aerometrex Pty Ltd
4. NSW Transport Theme © Spatial Services 2021

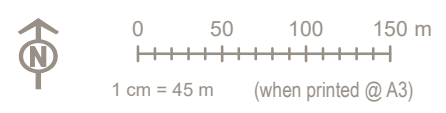
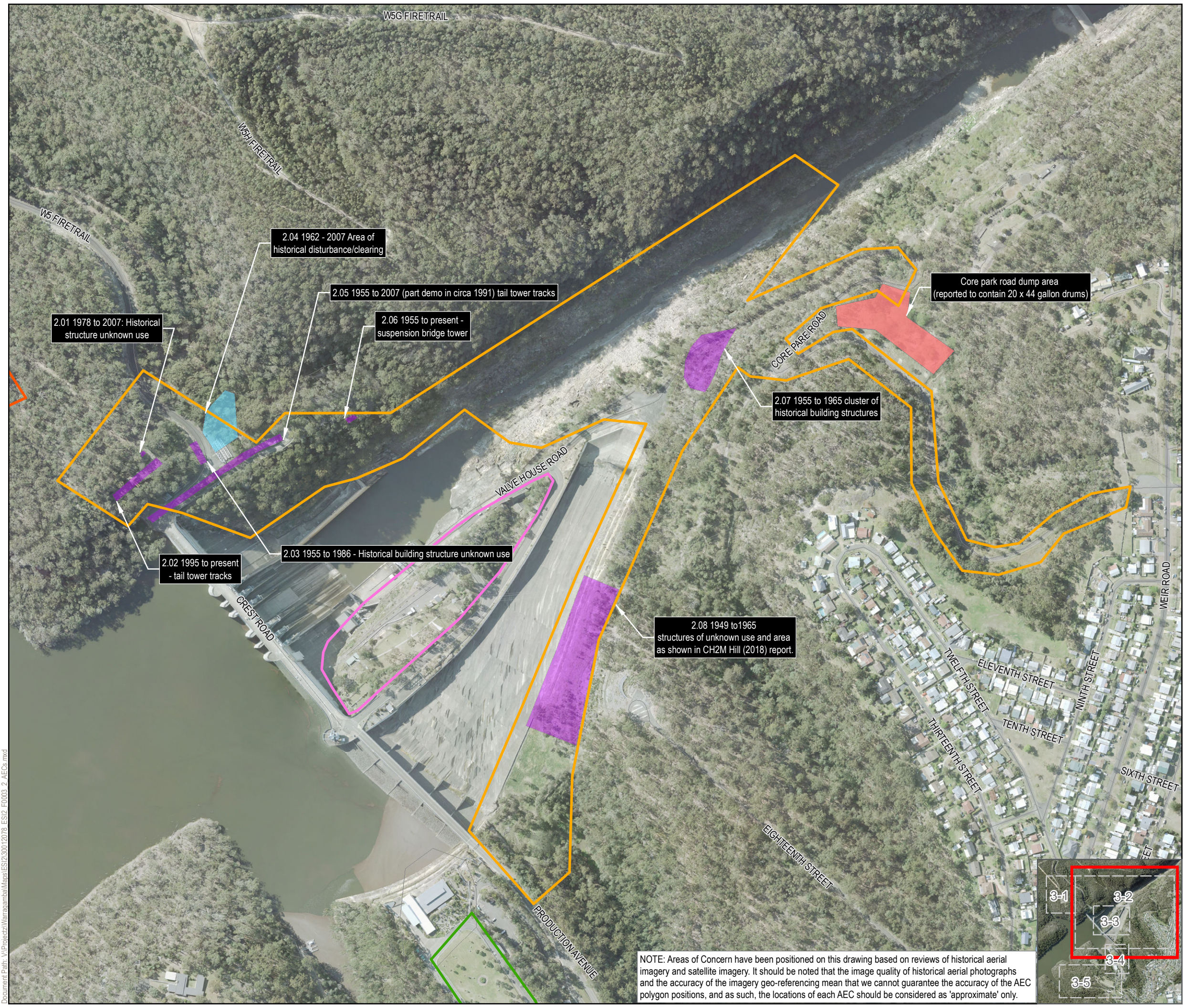
Disclaimer:
(insert disclaimer similar to this example)
© SMEC Australia Pty Ltd 2017. All Rights Reserved. While all reasonable care has been taken to ensure the information contained on this map is up to date and accurate, this map contains data from a number of sources - no warranty is given that the information contained on this is free from error or omission. Any reliance placed on such information shall be at the sole risk of the user. Please verify the accuracy of all information prior to using it. This map is not a design document. SMEC shall bear no responsibility or liability for any errors, faults, defects, or omissions in the information.

**Warragamba Dam Wall Raising
Proposed Construction Disturbance Areas
Preliminary Site Investigation**

Areas of Environmental Concern

PROJECT #: 30013187
CREATED BY: FA
LAST MODIFIED: FA13847, 3/06/2022
VERSION: Draft

FIGURE 3-1



SENSITIVE: NSW GOVERNMENT

LEGEND

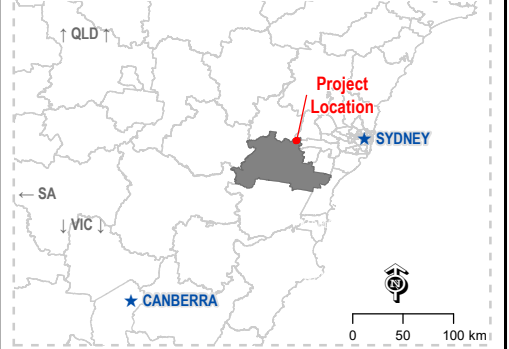
AEC Sites

- Site 1 – Former painters/grit blasting area
- Site 2 - Proposed vegetation clearance area
- Site 3 - Terraced Gardens
- Site 4 - Haviland Park

Areas of Environmental Concern

- AEC-1: Former/existing building structures (from weathering and/or ineffective demolition of hazardous building materials)
- AEC-2: Historical and/or existing equipment storage areas and historical construction areas
- AEC-8: Core park road dump area (reported to contain 20 x 44 gallon drums)

PROJECT LOCATION
NSW | Wollondilly | Wollondilly Shire Council (LGA)



- Data Sources:**
- Contours @ ELVIS - Elevation and Depth - Foundation Spatial Data, 2020
 - Localities, Roads, LGA, Base Data @ Road Net, 2020
 - MetroMap Imagery © Aerometrex Pty Ltd
 - NSW Transport Theme © Spatial Services 2021

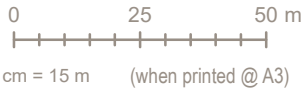
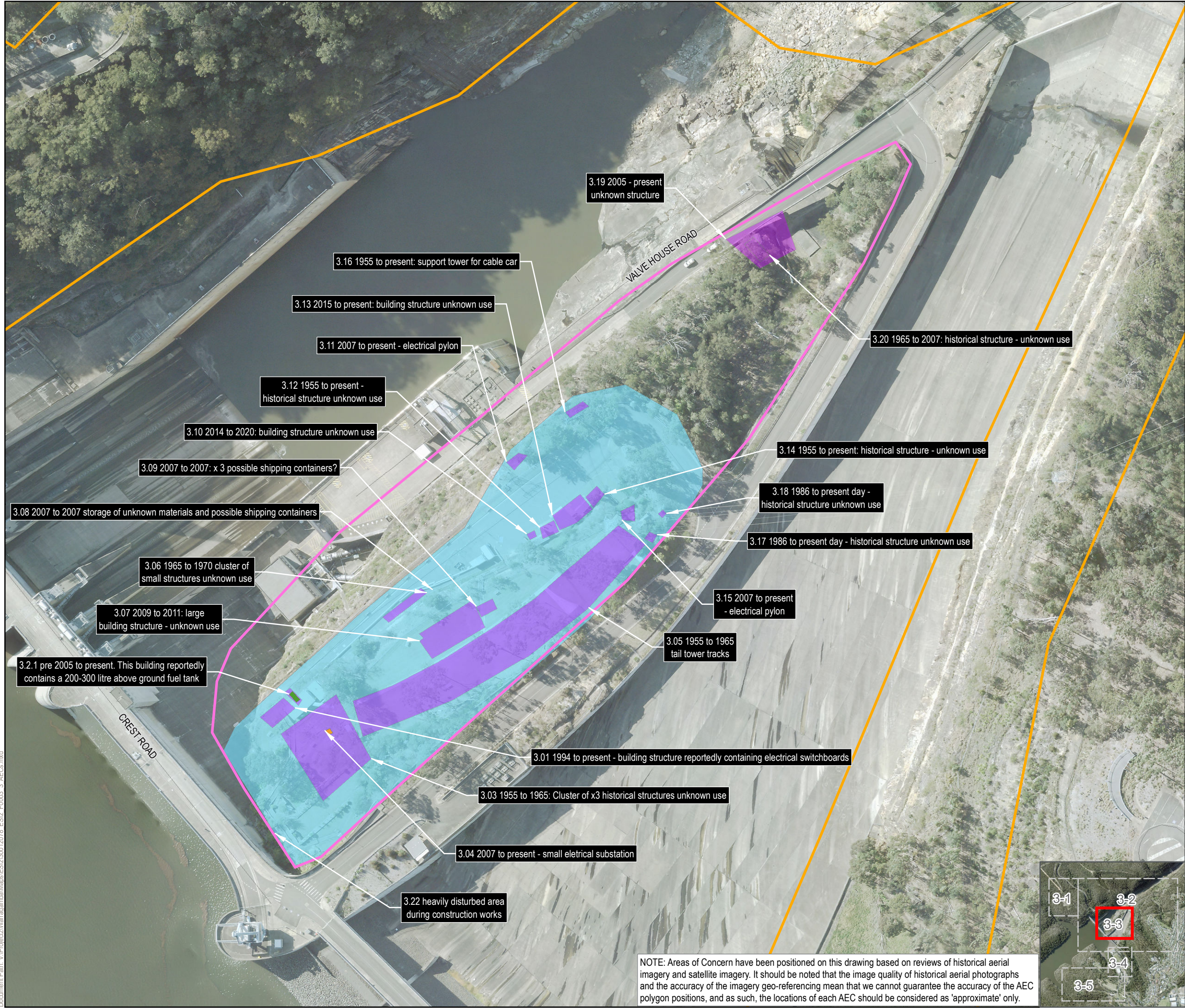
Disclaimer:
(insert disclaimer similar to this example)
© SMEC Australia Pty Ltd 2017. All Rights Reserved. While all reasonable care has been taken to ensure the information contained on this map is up to date and accurate, this map contains data from a number of sources - no warranty is given that the information contained on this is free from error or omission. Any reliance placed on such information shall be at the sole risk of the user. Please verify the accuracy of all information prior to using it. This map is not a design document. SMEC shall bear no responsibility or liability for any errors, faults, defects, or omissions in the information.

**Warragamba Dam Wall Raising
Proposed Construction Disturbance Areas
Preliminary Site Investigation**

Areas of Environmental Concern

PROJECT #: 30013187
CREATED BY: FA
LAST MODIFIED: FA13847, 3/06/2022
VERSION: Draft

FIGURE 3-2



SENSITIVE: NSW GOVERNMENT

LEGEND

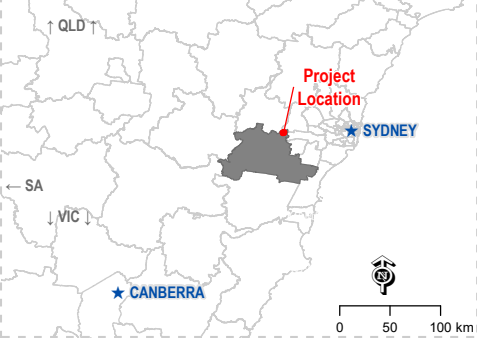
AEC Sites

- Site 2 - Proposed vegetation clearance area
- Site 3 - Terraced Gardens

Areas of Environmental Concern

- AEC-1: Former/existing building structures (from weathering and/or ineffective demolition of hazardous building materials)
- AEC-2: Historical and/or existing equipment storage areas and historical construction areas
- AEC-4: Fuel storage/re-fuelling (from possible leaks and/or spills)
- AEC-5: Electrical sub-station (from possible leaks of insulation oils)

PROJECT LOCATION
NSW | Wollondilly | Wollondilly Shire Council (LGA)



- Data Sources:**
- Contours @ ELVIS - Elevation and Depth - Foundation Spatial Data, 2020
 - Localities, Roads, LGA, Base Data @ Road Net, 2020
 - MetroMap Imagery @ Aerometrex Pty Ltd
 - NSW Transport Theme @ Spatial Services 2021

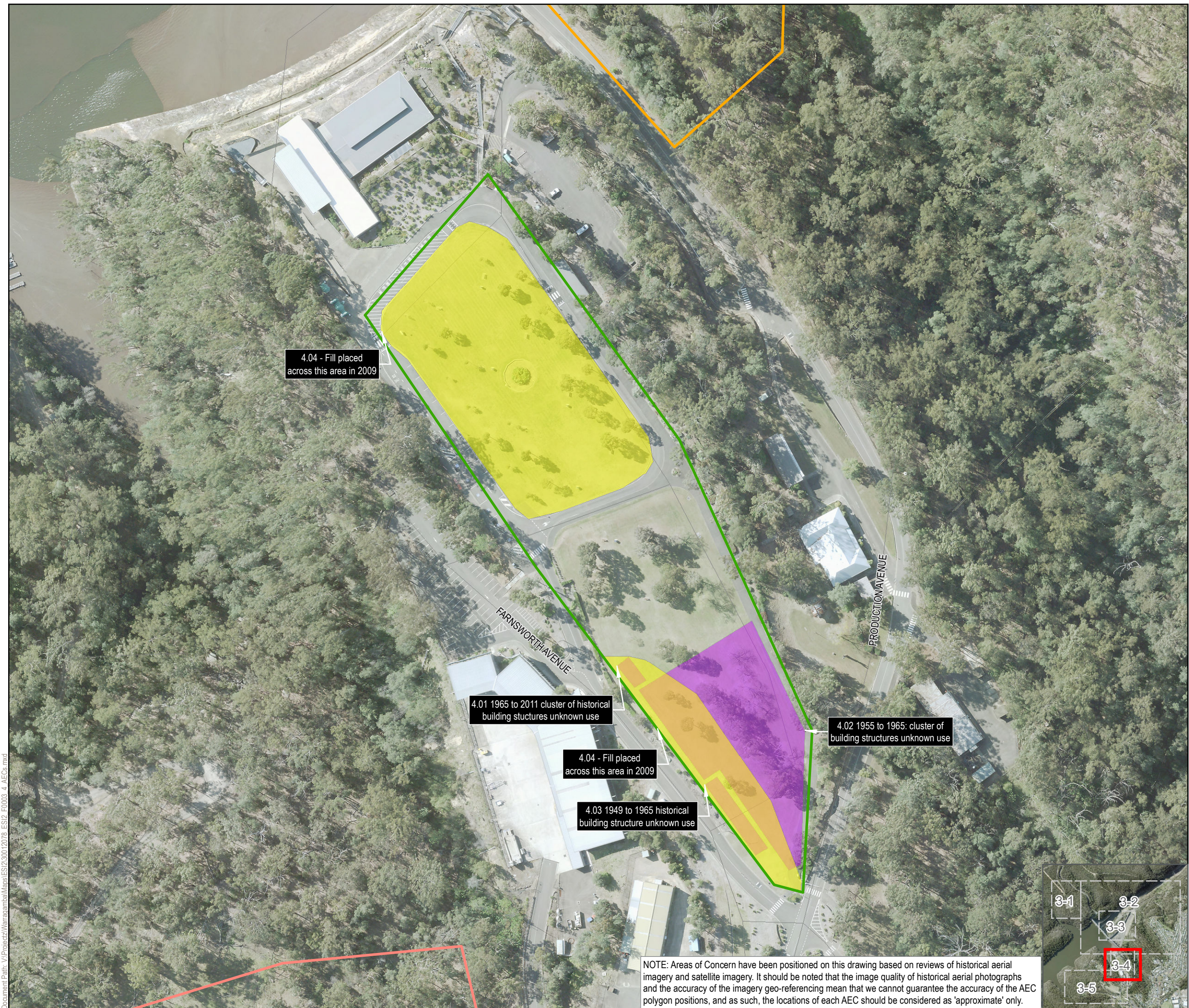
Disclaimer:
(insert disclaimer similar to this example)
© SMEC Australia Pty Ltd 2017. All Rights Reserved. While all reasonable care has been taken to ensure the information contained on this map is up to date and accurate, this map contains data from a number of sources - no warranty is given that the information contained on this is free from error or omission. Any reliance placed on such information shall be at the sole risk of the user. Please verify the accuracy of all information prior to using it. This map is not a design document. SMEC shall bear no responsibility or liability for any errors, faults, defects, or omissions in the information.

Warragamba Dam Wall Raising
Proposed Construction Disturbance Areas
Preliminary Site Investigation

Areas of Environmental Concern

PROJECT #: 30013187
CREATED BY: FA
LAST MODIFIED: FA13847, 3/06/2022
VERSION: Draft

FIGURE 3-3





GDA 1994 MGA Zone 56





SENSITIVE: NSW GOVERNMENT

LEGEND

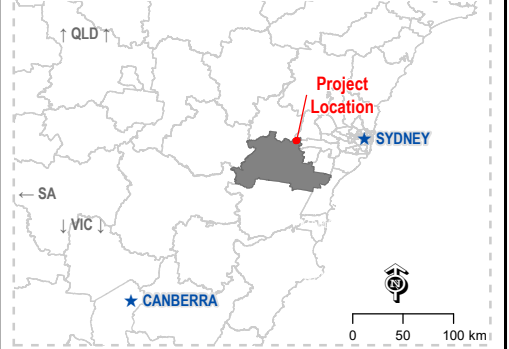
AEC Sites

-  Site 2 - Proposed vegetation clearance area
-  Site 4 - Haviland Park
-  Site 5b - Heliport/former housing

Areas of Environmental Concern

-  AEC-1: Former/existing building structures (from weathering and/or ineffective demolition of hazardous building materials)
-  AEC-3: Areas of stockpiling/filling (unknown origin and/or quality)

PROJECT LOCATION
NSW | Wollondilly | Wollondilly Shire Council (LGA)



Data Sources:
1. Contours @ ELVIS - Elevation and Depth - Foundation Spatial Data, 2020
2. Localities, Roads, LGA, Base Data @ Road Net, 2020
3. MetroMap Imagery © Aerometrex Pty Ltd
4. NSW Transport Theme © Spatial Services 2021

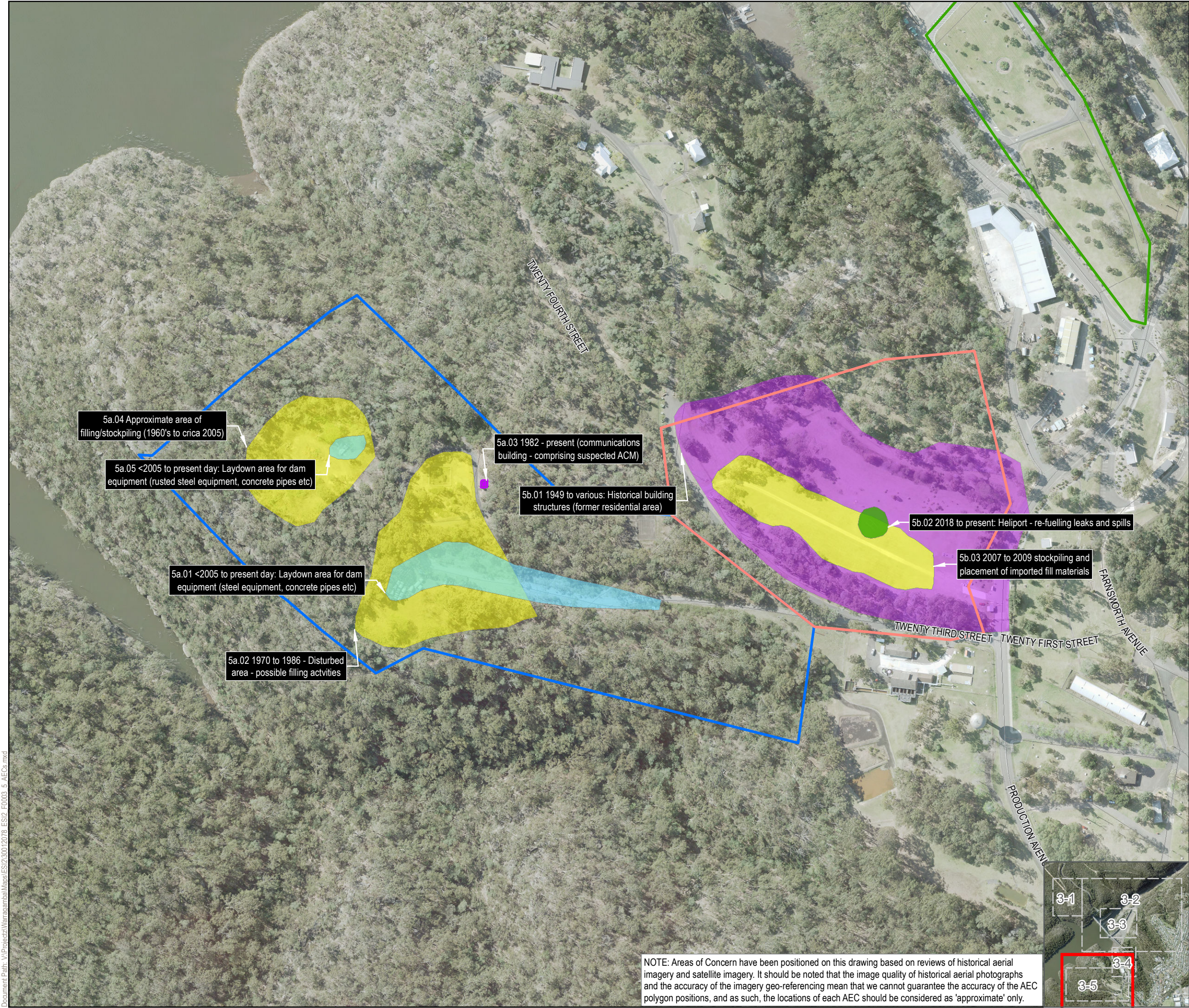
Disclaimer:
(insert disclaimer similar to this example)
© SMEC Australia Pty Ltd 2017. All Rights Reserved. While all reasonable care has been taken to ensure the information contained on this map is up to date and accurate, this map contains data from a number of sources - no warranty is given that the information contained on this is free from error or omission. Any reliance placed on such information shall be at the sole risk of the user. Please verify the accuracy of all information prior to using it. This map is not a design document. SMEC shall bear no responsibility or liability for any errors, faults, defects, or omissions in the information.

**Warragamba Dam Wall Raising
Proposed Construction Disturbance Areas
Preliminary Site Investigation**

Areas of Environmental Concern

PROJECT #:	30013187
CREATED BY:	FA
LAST MODIFIED:	FA13847, 3/06/2022
VERSION:	Draft

FIGURE 3-4



0 25 50 75 m

1 cm = 30 m (when printed @ A3)

SENSITIVE: NSW GOVERNMENT

LEGEND

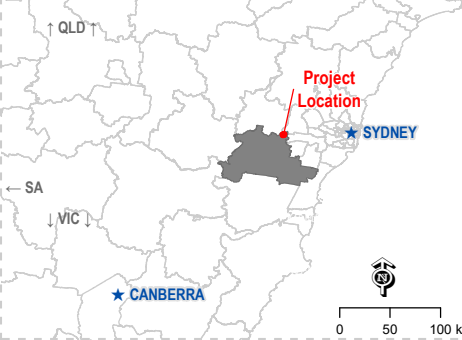
AEC Sites

- Site 4 - Haviland Park
- Site 5a - Materials storage/former housing
- Site 5b - Heliport/former housing

Areas of Environmental Concern

- AEC-1: Former/existing building structures (from weathering and/or ineffective demolition of hazardous building materials)
- AEC-2: Historical and/or existing equipment storage areas and historical construction areas
- AEC-3: Areas of stockpiling/filling (unknown origin and/or quality)
- AEC-4: Fuel storage/re-fuelling (from possible leaks and/or spills)

PROJECT LOCATION
NSW | Wollondilly | Wollondilly Shire Council (LGA)



Data Sources:

- Contours @ ELVIS - Elevation and Depth - Foundation Spatial Data, 2020
- Localities, Roads, LGA, Base Data @ Road Net, 2020
- MetroMap Imagery © Aerometrex Pty Ltd
- NSW Transport Theme © Spatial Services 2021

Disclaimer:
(insert disclaimer similar to this example)
© SMEC Australia Pty Ltd 2017. All Rights Reserved. While all reasonable care has been taken to ensure the information contained on this map is up to date and accurate, this map contains data from a number of sources - no warranty is given that the information contained on this is free from error or omission. Any reliance placed on such information shall be at the sole risk of the user. Please verify the accuracy of all information prior to using it. This map is not a design document. SMEC shall bear no responsibility or liability for any errors, faults, defects, or omissions in the information.

**Warragamba Dam Wall Raising
Proposed Construction Disturbance Areas
Preliminary Site Investigation**

Areas of Environmental Concern

PROJECT #: 30013187
CREATED BY: FA
LAST MODIFIED: FA13847, 3/06/2022
VERSION: Draft

FIGURE 3-5