

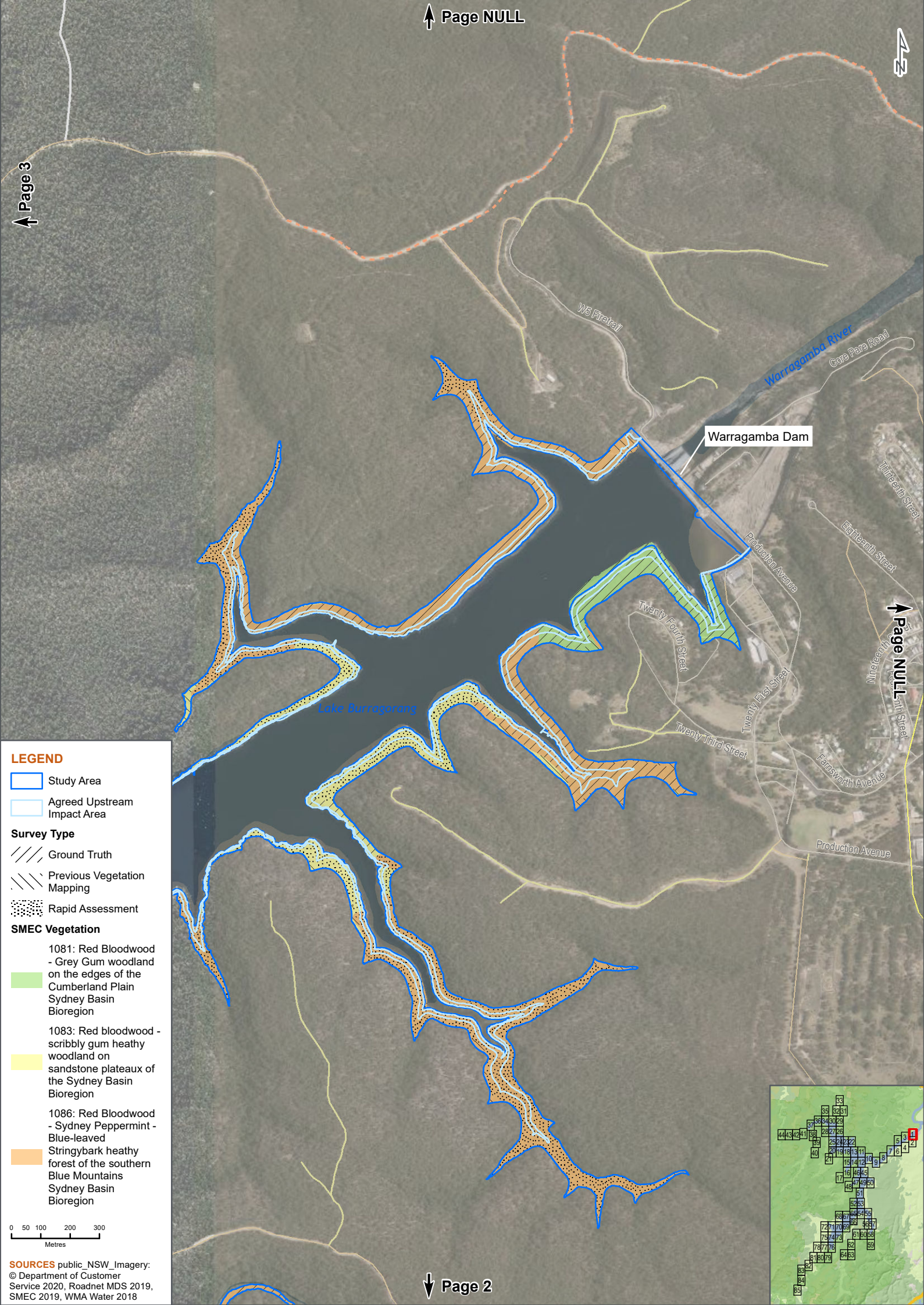


Environmental Impact Statement – Appendix F1: Biodiversity Assessment Report - Upstream

Warragamba Dam Raising

Reference No. 30012078
Prepared for WaterNSW
10 September 2021

Appendix L – Part 4a: Plant community types



LEGEND

Study Area

Agreed Upstream Impact Area

Survey Type

Ground Truth

Previous Vegetation Mapping

Rapid Assessment

SMEC Vegetation

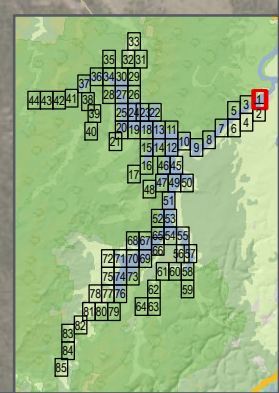
1081: Red Bloodwood - Grey Gum woodland on the edges of the Cumberland Plain Sydney Basin Bioregion

1083: Red bloodwood - scribbly gum heathy woodland on sandstone plateaux of the Sydney Basin Bioregion

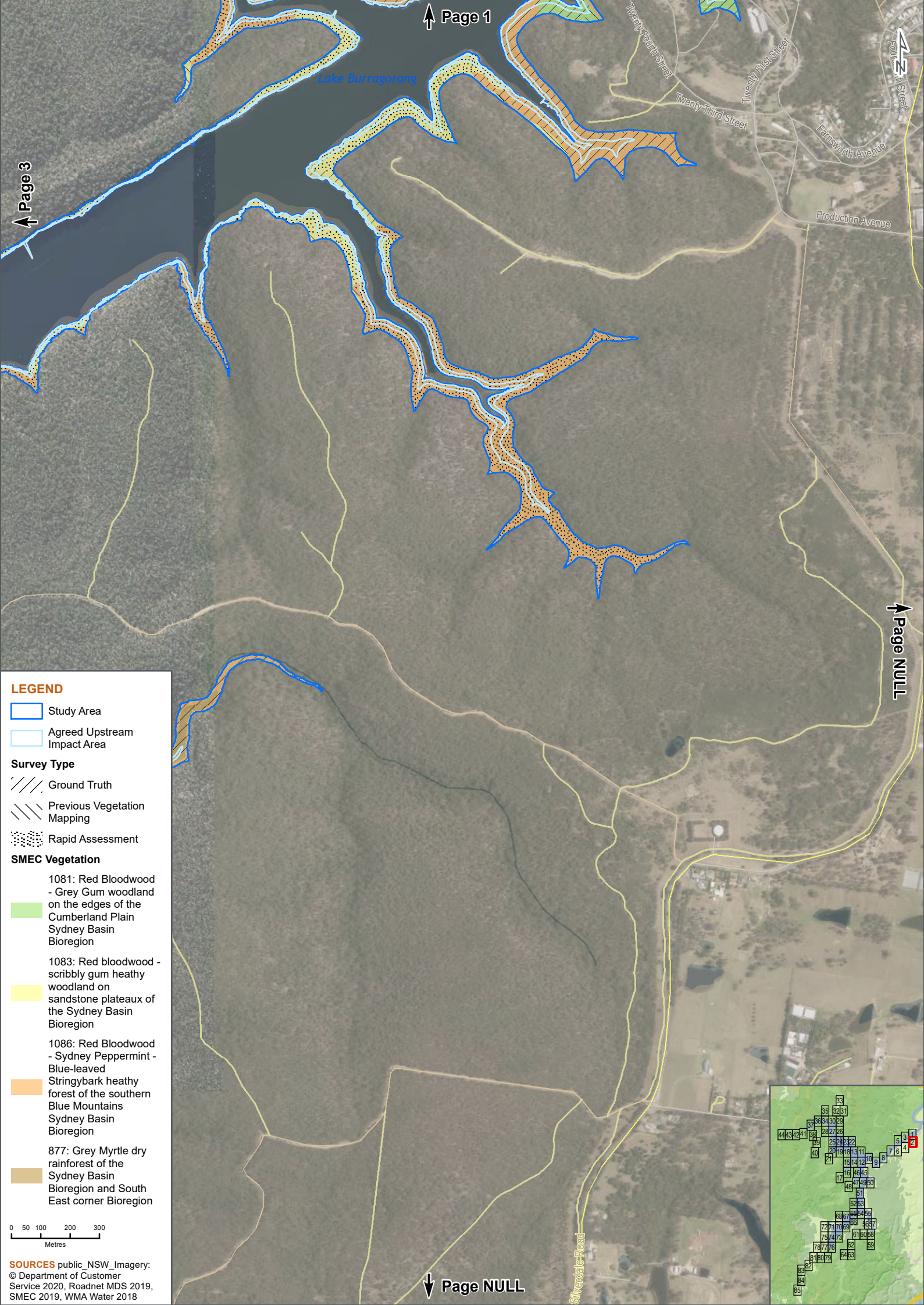
1086: Red Bloodwood - Sydney Peppermint - Blue-leaved Stringybark heathy forest of the southern Blue Mountains Sydney Basin Bioregion

0 50 100 200 300 Metres

SOURCES public_NSW_Imagery: © Department of Customer Service 2020, Roadnet MDS 2019, SMEC 2019, WMA Water 2018



↓ Page NULL



Study Area

Agreed Upstream Impact Area

Survey Type

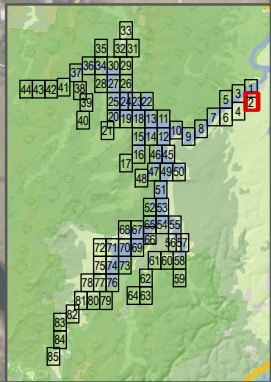
- Ground Truth
- Previous Vegetation Mapping
- Rapid Assessment

SMEC Vegetation

- 1081: Red Bloodwood - Grey Gum woodland on the edges of the Cumberland Plain Sydney Basin Bioregion
- 1083: Red bloodwood - scribbly gum heathy woodland on sandstone plateaux of the Sydney Basin Bioregion
- 1086: Red Bloodwood - Sydney Peppermint - Blue-leaved Stringybark heathy forest of the southern Blue Mountains Sydney Basin Bioregion
- 877: Grey Myrtle dry rainforest of the Sydney Basin Bioregion and South East corner Bioregion

0 50 100 200 300
Metres

SOURCES public_NSW_Imagery:
© Department of Customer
Service 2020, Roadnet MDS 2019,
SMEC 2019, WMA Water 2018



Big Crater Creek

LEGEND

- Study Area
- Agreed Upstream Impact Area

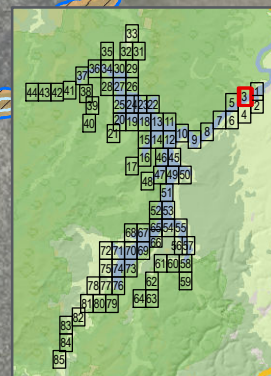
- Survey Type
- Ground Truth
 - Previous Vegetation Mapping
 - Rapid Assessment

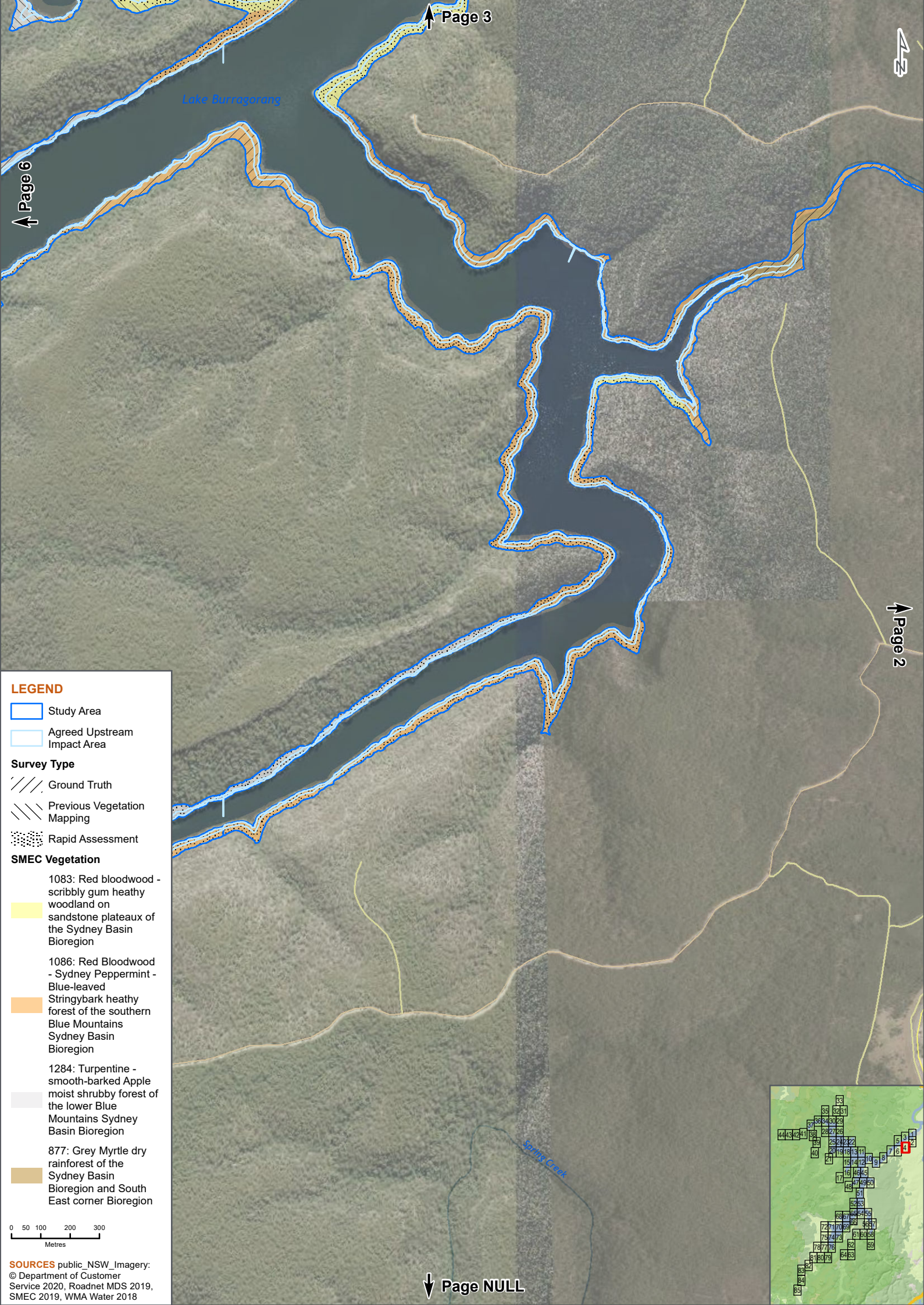
SMEC Vegetation

- 1083: Red bloodwood - scribbly gum heathy woodland on sandstone plateaux of the Sydney Basin Bioregion
- 1086: Red Bloodwood - Sydney Peppermint - Blue-leaved Stringybark heathy forest of the southern Blue Mountains Sydney Basin Bioregion
- 1284: Turpentine - smooth-barked Apple moist shrubby forest of the lower Blue Mountains Sydney Basin Bioregion
- 769: Coachwood - Lilly Pilly warm temperate rainforest in moist sandstone gullies Sydney Basin Bioregion
- 877: Grey Myrtle dry rainforest of the Sydney Basin Bioregion and South East corner Bioregion

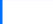
0 50 100 200 300
Metres


SOURCES public_NSW_Imagery:
© Department of Customer
Service 2020, Roadnet MDS 2019,
SMEC 2019, WMA Water 2018







LEGEND

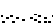
 Study Area

 Agreed Upstream Impact Area

Survey Type

 Ground Truth

 Previous Vegetation Mapping

 Rapid Assessment

SMEC Vegetation

1083: Red bloodwood - scribbly gum heathy woodland on sandstone plateaux of the Sydney Basin Bioregion

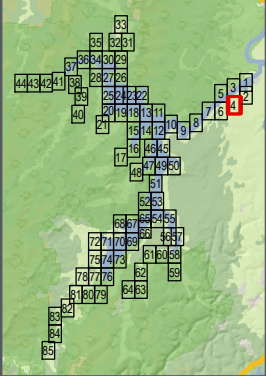
1086: Red Bloodwood - Sydney Peppermint - Blue-leaved Stringybark heathy forest of the southern Blue Mountains Sydney Basin Bioregion

1284: Turpentine - smooth-barked Apple moist shrubby forest of the lower Blue Mountains Sydney Basin Bioregion

877: Grey Myrtle dry rainforest of the Sydney Basin Bioregion and South East corner Bioregion

0 50 100 200 300
Metres

SOURCES public_NSW_Imagery:
© Department of Customer Service 2020, Roadnet MDS 2019, SMEC 2019, WMA Water 2018



LEGEND

Study Area

Agreed Upstream Impact Area

Survey Type

Ground Truth

Previous Vegetation Mapping

Rapid Assessment

SMEC Vegetation

1083: Red bloodwood - scribbly gum heathy woodland on sandstone plateaux of the Sydney Basin Bioregion

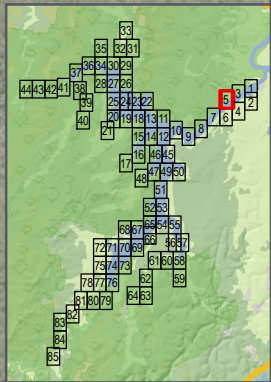
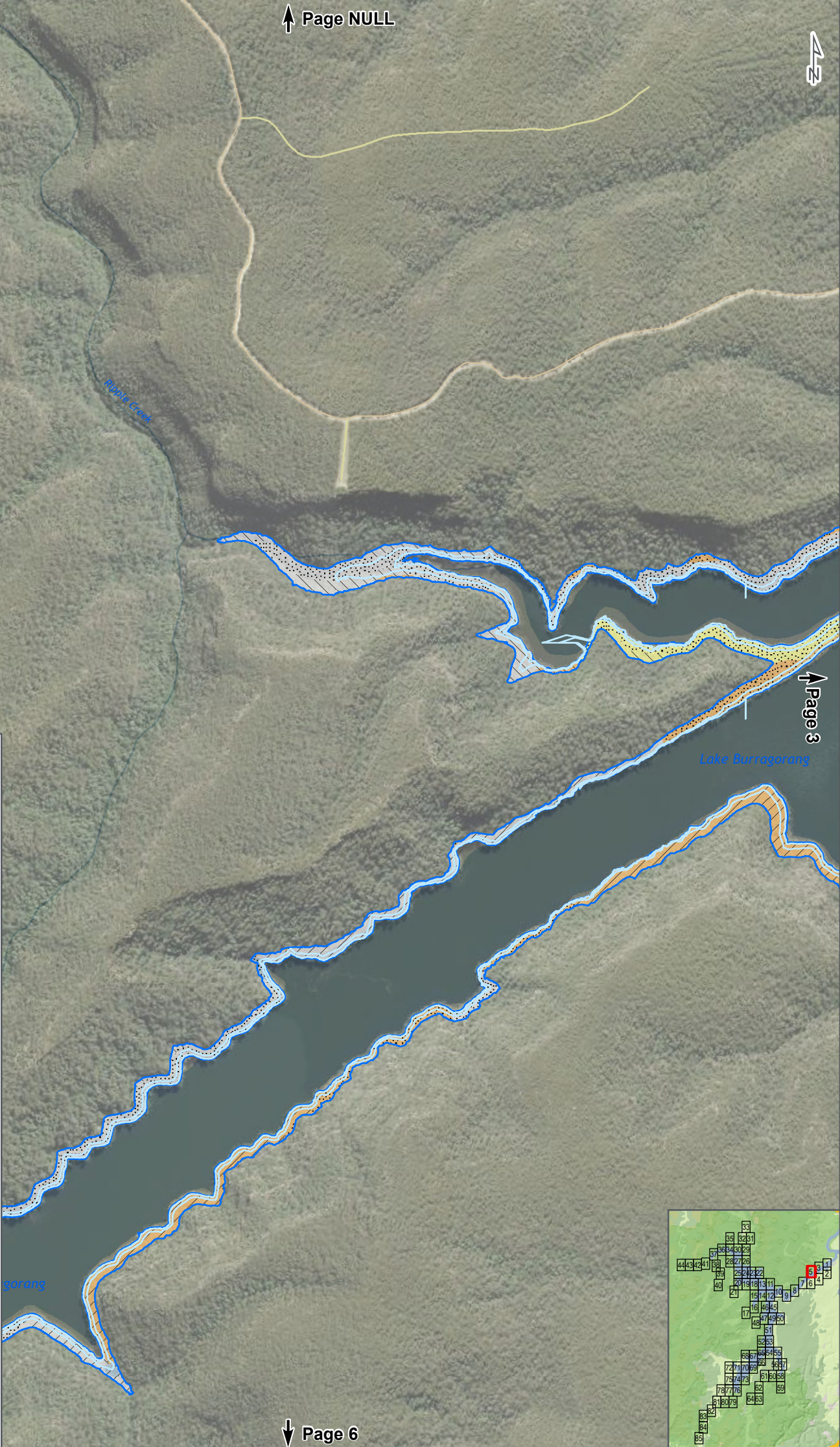
1086: Red Bloodwood - Sydney Peppermint - Blue-leaved

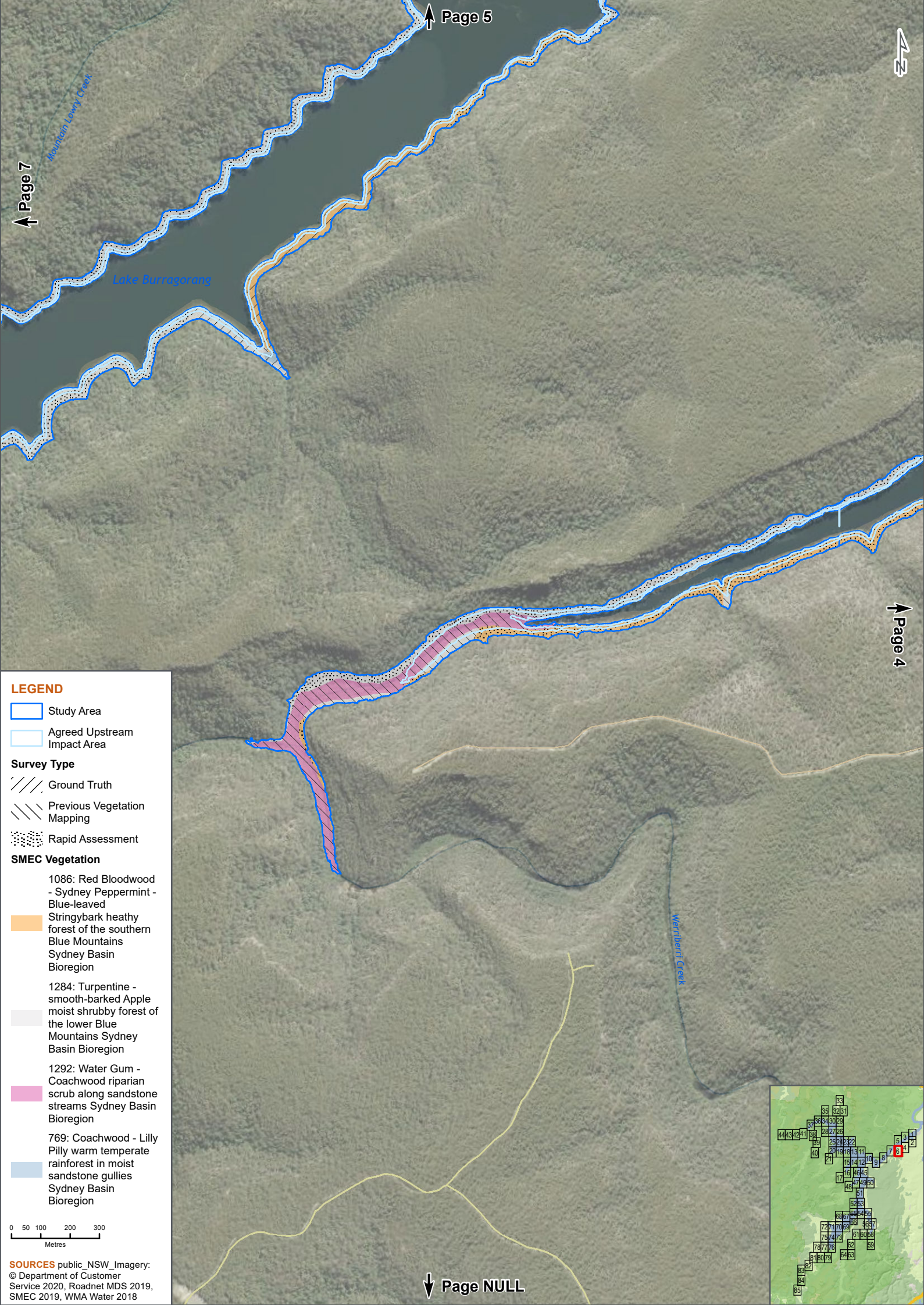
Stringybark heathy forest of the southern Blue Mountains Sydney Basin Bioregion

1284: Turpentine - smooth-barked Apple moist shrubby forest of the lower Blue Mountains Sydney Basin Bioregion


769: Coachwood - Lilly Pilly warm temperate rainforest in moist sandstone gullies Sydney Basin Bioregion


SOURCES public_NSW_Imagery: © Department of Customer Service 2020, Roadnet MDS 2019, SMEC 2019, WMA Water 2018





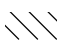
LEGEND

 Study Area

 Agreed Upstream Impact Area

Survey Type

 Ground Truth

 Previous Vegetation Mapping

 Rapid Assessment

SMEC Vegetation

1086: Red Bloodwood - Sydney Peppermint - Blue-leaved Stringybark heathy forest of the southern Blue Mountains Sydney Basin Bioregion

1284: Turpentine - smooth-barked Apple moist shrubby forest of the lower Blue Mountains Sydney Basin Bioregion

1292: Water Gum - Coachwood riparian scrub along sandstone streams Sydney Basin Bioregion

769: Coachwood - Lilly Pilly warm temperate rainforest in moist sandstone gullies Sydney Basin Bioregion

0 50 100 200 300
Metres

SOURCES public_NSW_Imagery:
© Department of Customer Service 2020, Roadnet MDS 2019, SMEC 2019, WMA Water 2018

LEGEND

Study Area

Agreed Upstream Impact Area

Survey Type

Ground Truth

Previous Vegetation Mapping

Rapid Assessment

SMEC Vegetation

1086: Red Bloodwood - Sydney Peppermint - Blue-leaved Stringybark heathy forest of the southern Blue Mountains Sydney Basin Bioregion

1284: Turpentine - smooth-barked Apple moist shrubby forest of the lower Blue Mountains Sydney Basin Bioregion

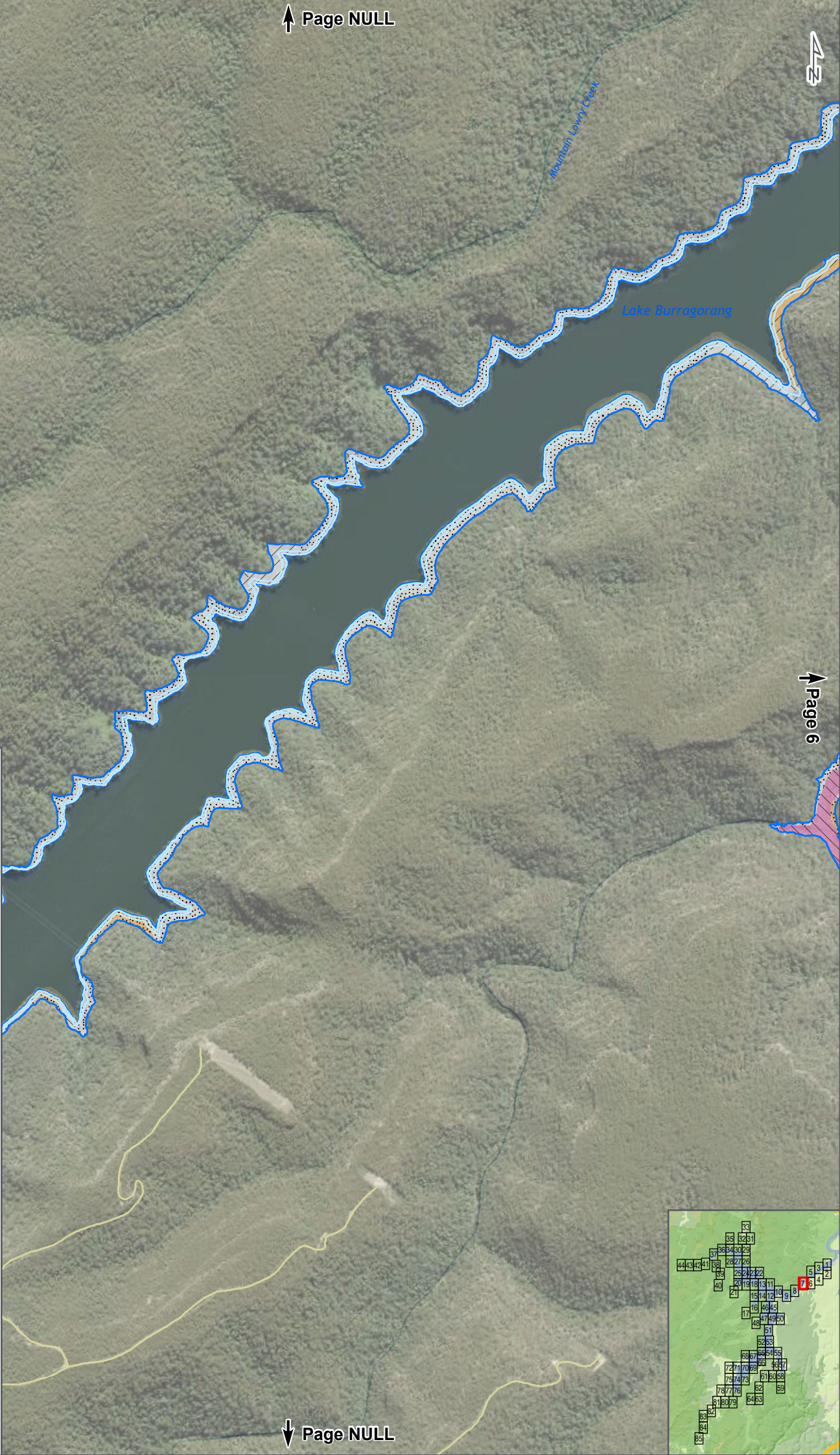
1292: Water Gum - Coachwood riparian scrub along sandstone streams Sydney Basin Bioregion

769: Coachwood - Lilly Pilly warm temperate rainforest in moist sandstone gullies Sydney Basin Bioregion

0 50 100 200 300

Metres

SOURCES public_NSW_Imagery: © Department of Customer Service 2020, Roadnet MDS 2019, SMEC 2019, WMA Water 2018



LEGEND

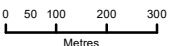
- Study Area
- Agreed Upstream Impact Area

Survey Type

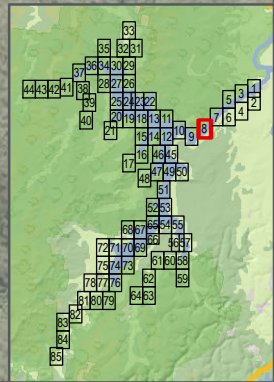
- Ground Truth
- Previous Vegetation Mapping
- Rapid Assessment

SMEC Vegetation

- 1086: Red Bloodwood - Sydney Peppermint - Blue-leaved
- Stringybark heathy forest of the southern Blue Mountains Sydney Basin Bioregion
- 1284: Turpentine - smooth-barked Apple moist shrubby forest of the lower Blue Mountains Sydney Basin Bioregion
- 769: Coachwood - Lilly Pilly warm temperate rainforest in moist sandstone gullies Sydney Basin Bioregion
- 860: Grey Gum - Broad-leaved Ironbark dry open forest on gorge slopes on the Blue Mountains Sydney Basin Bioregion
- 871: Grey Gum shrubby open forest on gorge slopes of the Blue Mountains Sydney Basin Bioregion



SOURCES public_NSW_Imagery:
© Department of Customer
Service 2020, Roadnet MDS 2019,
SMEC 2019, WMA Water 2018



LEGEND

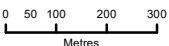
- Study Area
- Agreed Upstream Impact Area

Survey Type

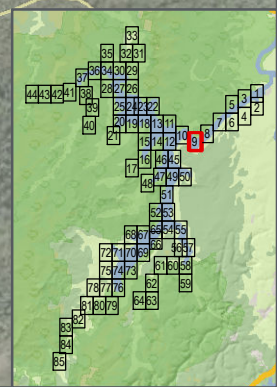
- Ground Truth
- Previous Vegetation Mapping
- Rapid Assessment

SMEC Vegetation

- 1086: Red Bloodwood - Sydney Peppermint - Blue-leaved
- Stringybark heathy forest of the southern Blue Mountains Sydney Basin Bioregion
- 1284: Turpentine - smooth-barked Apple moist shrubby forest of the lower Blue Mountains Sydney Basin Bioregion
- 769: Coachwood - Lilly Pilly warm temperate rainforest in moist sandstone gullies Sydney Basin Bioregion
- 860: Grey Gum - Broad-leaved Ironbark dry open forest on gorge slopes on the Blue Mountains Sydney Basin Bioregion
- 871: Grey Gum shrubby open forest on gorge slopes of the Blue Mountains Sydney Basin Bioregion



SOURCES public_NSW_Imagery:
© Department of Customer
Service 2020, Roadnet MDS 2019,
SMEC 2019, WMA Water 2018



LEGEND

Study Area

Agreed Upstream Impact Area

Survey Type

Ground Truth

Previous Vegetation Mapping

Rapid Assessment

SMEC Vegetation

769: Coachwood - Lilly Pilly warm temperate rainforest in moist sandstone gullies Sydney Basin Bioregion

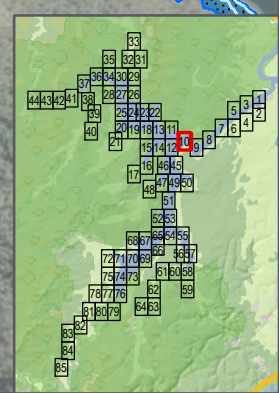
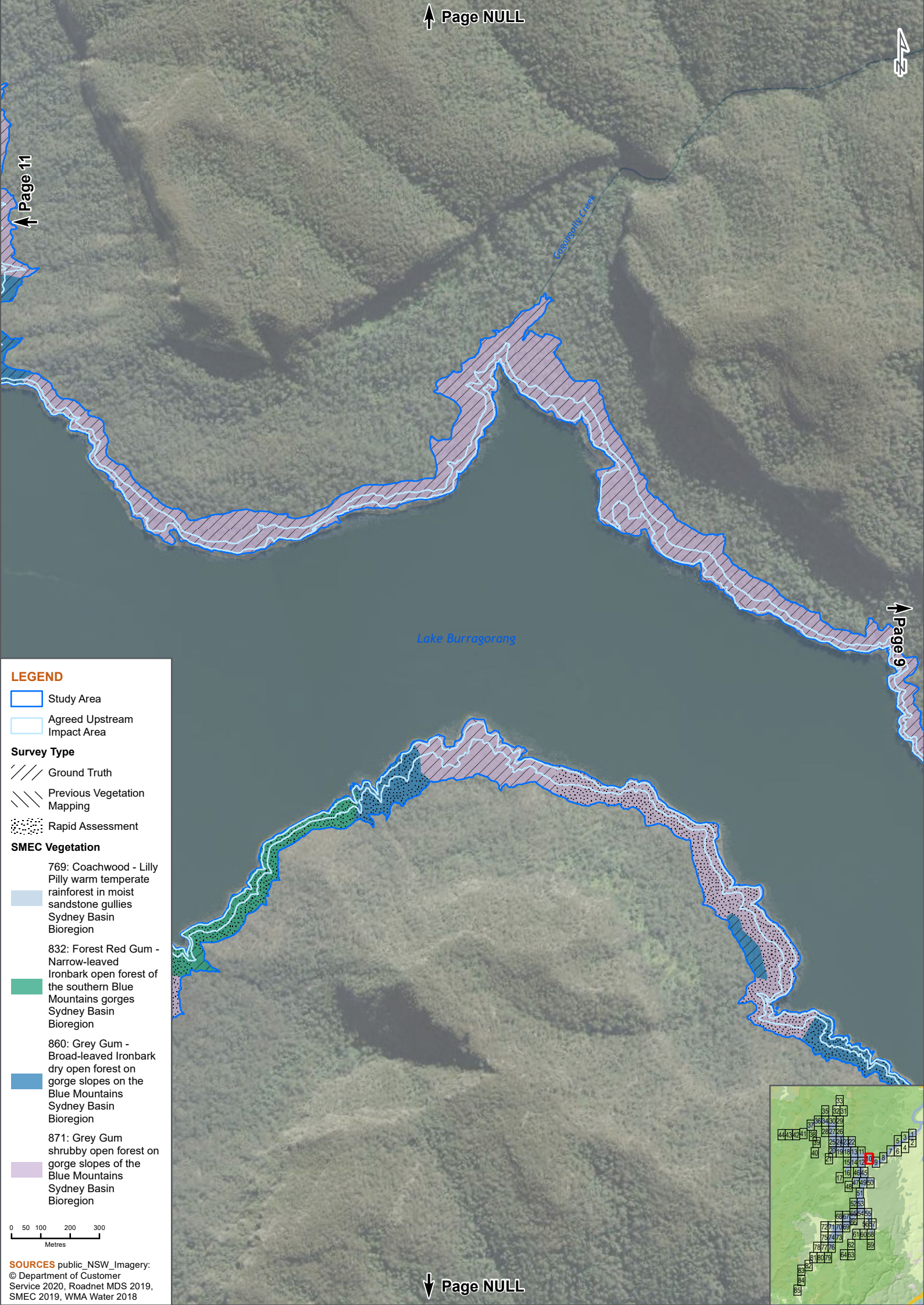
832: Forest Red Gum - Narrow-leaved Ironbark open forest of the southern Blue Mountains gorges Sydney Basin Bioregion

860: Grey Gum - Broad-leaved Ironbark dry open forest on gorge slopes on the Blue Mountains Sydney Basin Bioregion


871: Grey Gum shrubby open forest on gorge slopes of the Blue Mountains Sydney Basin Bioregion

0 50 100 200 300 Metres


SOURCES public_NSW_Imagery: © Department of Customer Service 2020, Roadnet MDS 2019, SMEC 2019, WMA Water 2018



LEGEND

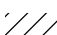


 Study Area

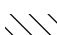


 Agreed Upstream Impact Area


Survey Type



 Ground Truth




 Previous Vegetation Mapping




 Rapid Assessment


SMEC Vegetation




 832: Forest Red Gum - Narrow-leaved Ironbark open forest of the southern Blue Mountains gorges Sydney Basin Bioregion



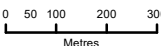
 860: Grey Gum - Broad-leaved Ironbark dry open forest on gorge slopes on the Blue Mountains Sydney Basin Bioregion



 871: Grey Gum shrubby open forest on gorge slopes of the Blue Mountains Sydney Basin Bioregion



 877: Grey Myrtle dry rainforest of the Sydney Basin Bioregion and South East corner Bioregion





 0 50 100 200 300 Metres

SOURCES public_NSW_Imagery: © Department of Customer Service 2020, Roadnet MDS 2019, SMEC 2019, WMA Water 2018


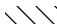



Lake Burragorang

LEGEND

-  Study Area
-  Agreed Upstream Impact Area

Survey Type

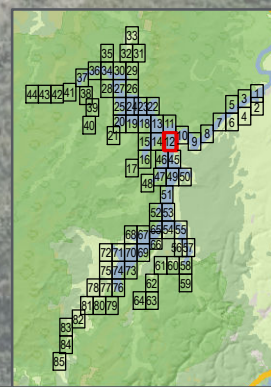
-  Ground Truth
-  Previous Vegetation Mapping
-  Rapid Assessment

SMEC Vegetation

-  1401: Narrow-leaved Ironbark - Forest Red Gum on rocky slopes of the lower Burragorang Gorge Sydney Basin Bioregion
-  832: Forest Red Gum - Narrow-leaved Ironbark open forest of the southern Blue Mountains gorges Sydney Basin Bioregion
-  860: Grey Gum - Broad-leaved Ironbark dry open forest on gorge slopes on the Blue Mountains Sydney Basin Bioregion
-  871: Grey Gum shrubby open forest on gorge slopes of the Blue Mountains Sydney Basin Bioregion
-  877: Grey Myrtle dry rainforest of the Sydney Basin Bioregion and South East corner Bioregion

0 50 100 200 300
Metres

SOURCES public_NSW_Imagery:
© Department of Customer
Service 2020, Roadnet MDS 2019,
SMEC 2019, WMA Water 2018



Lake Burragorang

LEGEND

Study Area

Agreed Upstream
Impact Area

Survey Type

Ground Truth

Previous Vegetation
Mapping

Rapid Assessment

SMEC Vegetation

1401: Narrow-leaved
Ironbark - Forest Red
Gum on rocky slopes
of the lower
Burragorang Gorge
Sydney Basin
Bioregion

832: Forest Red Gum -
Narrow-leaved
Ironbark open forest of
the southern Blue
Mountains gorges
Sydney Basin
Bioregion

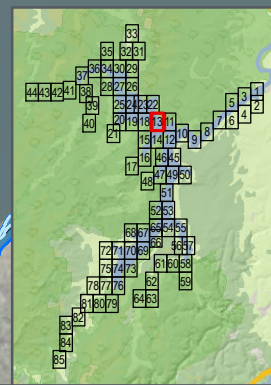
860: Grey Gum -
Broad-leaved Ironbark
dry open forest on
gorge slopes on the
Blue Mountains
Sydney Basin
Bioregion

871: Grey Gum
shrubby open forest on
gorge slopes of the
Blue Mountains
Sydney Basin
Bioregion

877: Grey Myrtle dry
rainforest of the
Sydney Basin
Bioregion and South
East corner Bioregion

0 50 100 200 300
Metres

SOURCES public_NSW_Imagery:
© Department of Customer
Service 2020, Roadnet MDS 2019,
SMEC 2019, WMA Water 2018



Lake Burragorang

LEGEND

Study Area

Agreed Upstream Impact Area

Survey Type

Ground Truth

Previous Vegetation Mapping

Rapid Assessment

SMEC Vegetation

1401: Narrow-leaved Ironbark - Forest Red Gum on rocky slopes of the lower Burragorang Gorge Sydney Basin Bioregion

832: Forest Red Gum - Narrow-leaved Ironbark open forest of the southern Blue Mountains gorges Sydney Basin Bioregion

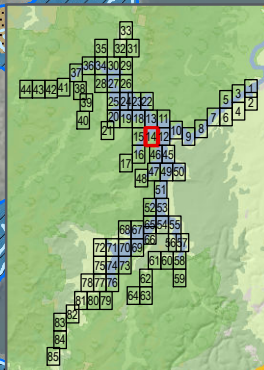
860: Grey Gum - Broad-leaved Ironbark dry open forest on gorge slopes on the Blue Mountains Sydney Basin Bioregion

871: Grey Gum shrubby open forest on gorge slopes of the Blue Mountains Sydney Basin Bioregion

877: Grey Myrtle dry rainforest of the Sydney Basin Bioregion and South East corner Bioregion

0 50 100 200 300 Metres

SOURCES public_NSW_Imagery: © Department of Customer Service 2020, Roadnet MDS 2019, SMEC 2019, WMA Water 2018



LEGEND

Study Area

Agreed Upstream Impact Area

Survey Type

Ground Truth

Previous Vegetation Mapping

Rapid Assessment

SMEC Vegetation

1401: Narrow-leaved Ironbark - Forest Red Gum on rocky slopes of the lower Burragorang Gorge Sydney Basin Bioregion

860: Grey Gum - Broad-leaved Ironbark dry open forest on gorge slopes on the Blue Mountains Sydney Basin Bioregion

862: Grey Gum - Hard Leaved Scribbly Gum woodland of the Cox River Valley

871: Grey Gum shrubby open forest on gorge slopes of the Blue Mountains Sydney Basin Bioregion

877: Grey Myrtle dry rainforest of the Sydney Basin Bioregion and South East corner Bioregion

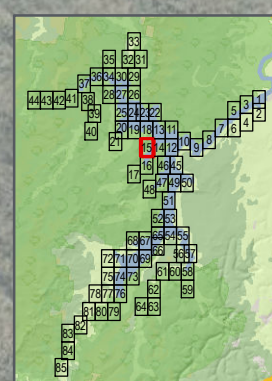
0 50 100 200 300 Metres

SOURCES public_NSW_Imagery: © Department of Customer Service 2020, Roadnet MDS 2019, SMEC 2019, WMA Water 2018

Popes Creek

Lake Burragorang

Lake Burragorang



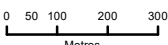
Lake Burragorang

LEGEND

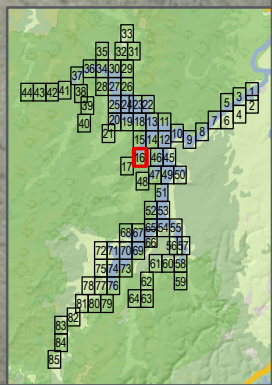
- Study Area
- Agreed Upstream Impact Area

- Survey Type**
- Ground Truth
 - Previous Vegetation Mapping
 - Rapid Assessment

- SMEC Vegetation**
- 1105: River Oak open forest of major streams
Sydney Basin Bioregion and South East Corner Bioregion
 - 860: Grey Gum - Broad-leaved Ironbark dry open forest on gorge slopes on the Blue Mountains
Sydney Basin Bioregion
 - 862: Grey Gum - Hard Leaved Scribbly Gum woodland of the Cox River Valley
 - 871: Grey Gum shrubby open forest on gorge slopes of the Blue Mountains
Sydney Basin Bioregion
 - 877: Grey Myrtle dry rainforest of the Sydney Basin Bioregion and South East corner Bioregion
 - 941: Mountain Blue Gum - Thin-leaved Stringybark open forest on river flat alluvium in the Sydney Basin Bioregion



SOURCES public_NSW_Imagery:
© Department of Customer Service 2020, Roadnet MDS 2019, SMEC 2019, WMA Water 2018



LEGEND

- Study Area
- Agreed Upstream Impact Area

Survey Type

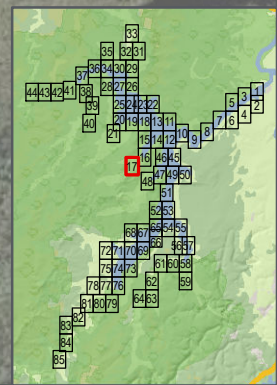
- Ground Truth
- Previous Vegetation Mapping

SMEC Vegetation

- 860: Grey Gum - Broad-leaved Ironbark dry open forest on gorge slopes on the Blue Mountains Sydney Basin Bioregion
- 862: Grey Gum - Hard Leaved Scribbly Gum woodland of the Cox River Valley
- 871: Grey Gum shrubby open forest on gorge slopes of the Blue Mountains Sydney Basin Bioregion
- 877: Grey Myrtle dry rainforest of the Sydney Basin Bioregion and South East corner Bioregion

0 50 100 200 300
Metres

SOURCES public_NSW_Imagery:
© Department of Customer
Service 2020, Roadnet MDS 2019,
SMEC 2019, WMA Water 2018



Lake Burragorang

LEGEND

Study Area

Agreed Upstream Impact Area

Survey Type

Ground Truth

Previous Vegetation Mapping

Rapid Assessment

SMEC Vegetation

1401: Narrow-leaved Ironbark - Forest Red Gum on rocky slopes of the lower Burragorang Gorge Sydney Basin Bioregion

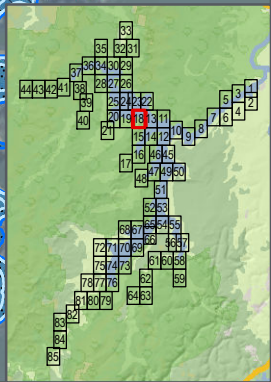
860: Grey Gum - Broad-leaved Ironbark dry open forest on gorge slopes on the Blue Mountains Sydney Basin Bioregion

871: Grey Gum shrubby open forest on gorge slopes of the Blue Mountains Sydney Basin Bioregion

877: Grey Myrtle dry rainforest of the Sydney Basin Bioregion and South East corner Bioregion

0 50 100 200 300 Metres

SOURCES public_NSW_Imagery: © Department of Customer Service 2020, Roadnet MDS 2019, SMEC 2019, WMA Water 2018



Lake Burragorang

LEGEND

- Study Area
- Agreed Upstream Impact Area

Survey Type

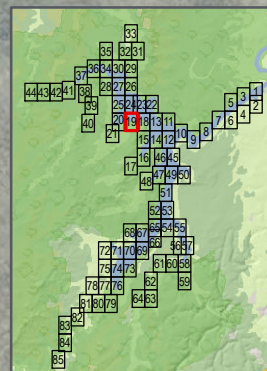
- Ground Truth
- Previous Vegetation Mapping
- Rapid Assessment

SMEC Vegetation

- 832: Forest Red Gum - Narrow-leaved Ironbark open forest of the southern Blue Mountains gorges Sydney Basin Bioregion
- 860: Grey Gum - Broad-leaved Ironbark dry open forest on gorge slopes on the Blue Mountains Sydney Basin Bioregion
- 871: Grey Gum shrubby open forest on gorge slopes of the Blue Mountains Sydney Basin Bioregion
- 877: Grey Myrtle dry rainforest of the Sydney Basin Bioregion and South East corner Bioregion

0 50 100 200 300
Metres

SOURCES public_NSW_Imagery:
© Department of Customer
Service 2020, Roadnet MDS 2019,
SMEC 2019, WMA Water 2018



LEGEND

Study Area

Agreed Upstream Impact Area

Survey Type

Ground Truth

Previous Vegetation Mapping

Rapid Assessment

SMEC Vegetation

1105: River Oak open forest of major streams Sydney Basin Bioregion and South East Corner Bioregion

832: Forest Red Gum - Narrow-leaved Ironbark open forest of the southern Blue Mountains gorges Sydney Basin Bioregion

860: Grey Gum - Broad-leaved Ironbark dry open forest on gorge slopes on the Blue Mountains Sydney Basin Bioregion

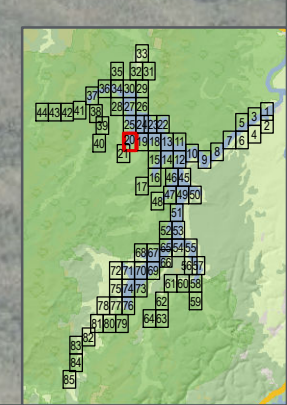
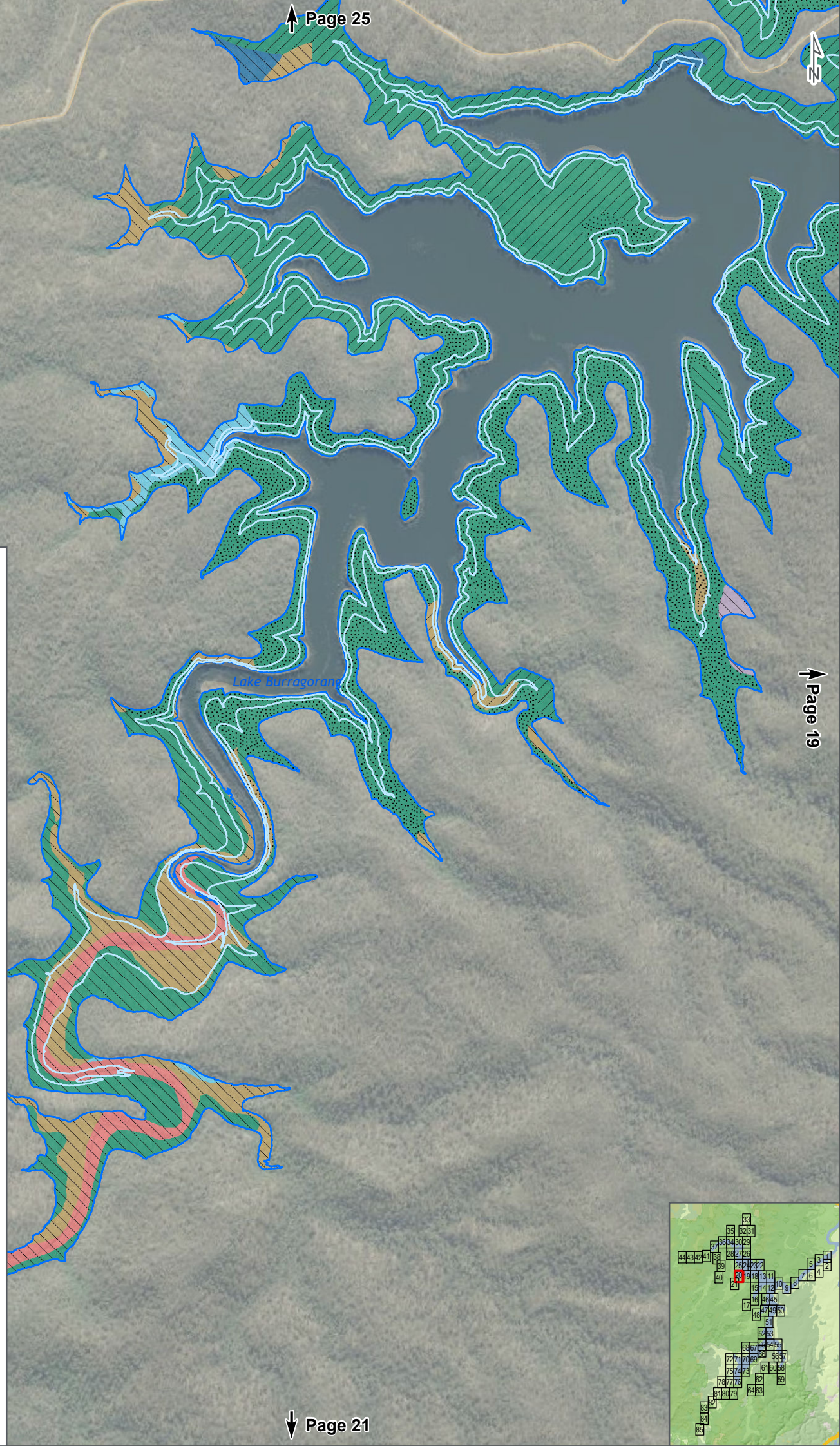
870: Grey Gum - Thin-leaved Stringybark grassy woodland of the southern Blue Mountain gorges Sydney Basin Bioregion

871: Grey Gum shrubby open forest on gorge slopes of the Blue Mountains Sydney Basin Bioregion

877: Grey Myrtle dry rainforest of the Sydney Basin Bioregion and South East corner Bioregion

0 50 100 200 300 Metres

SOURCES public_NSW_Imagery: © Department of Customer Service 2020, Roadnet MDS 2019, SMEC 2019, WMA Water 2018



LEGEND

Study Area

Agreed Upstream
Impact Area

Survey Type

Ground Truth

Previous Vegetation
Mapping

Rapid Assessment

SMEC Vegetation

1105: River Oak open
forest of major streams
Sydney Basin
Bioregion and South
East Corner Bioregion

832: Forest Red Gum -
Narrow-leaved
Ironbark open forest of
the southern Blue
Mountains gorges
Sydney Basin
Bioregion

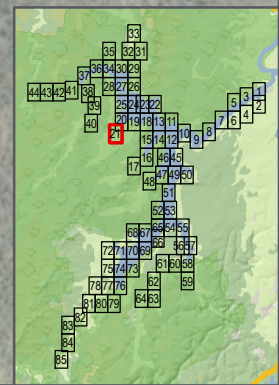
860: Grey Gum -
Broad-leaved Ironbark
dry open forest on
gorge slopes on the
Blue Mountains
Sydney Basin
Bioregion

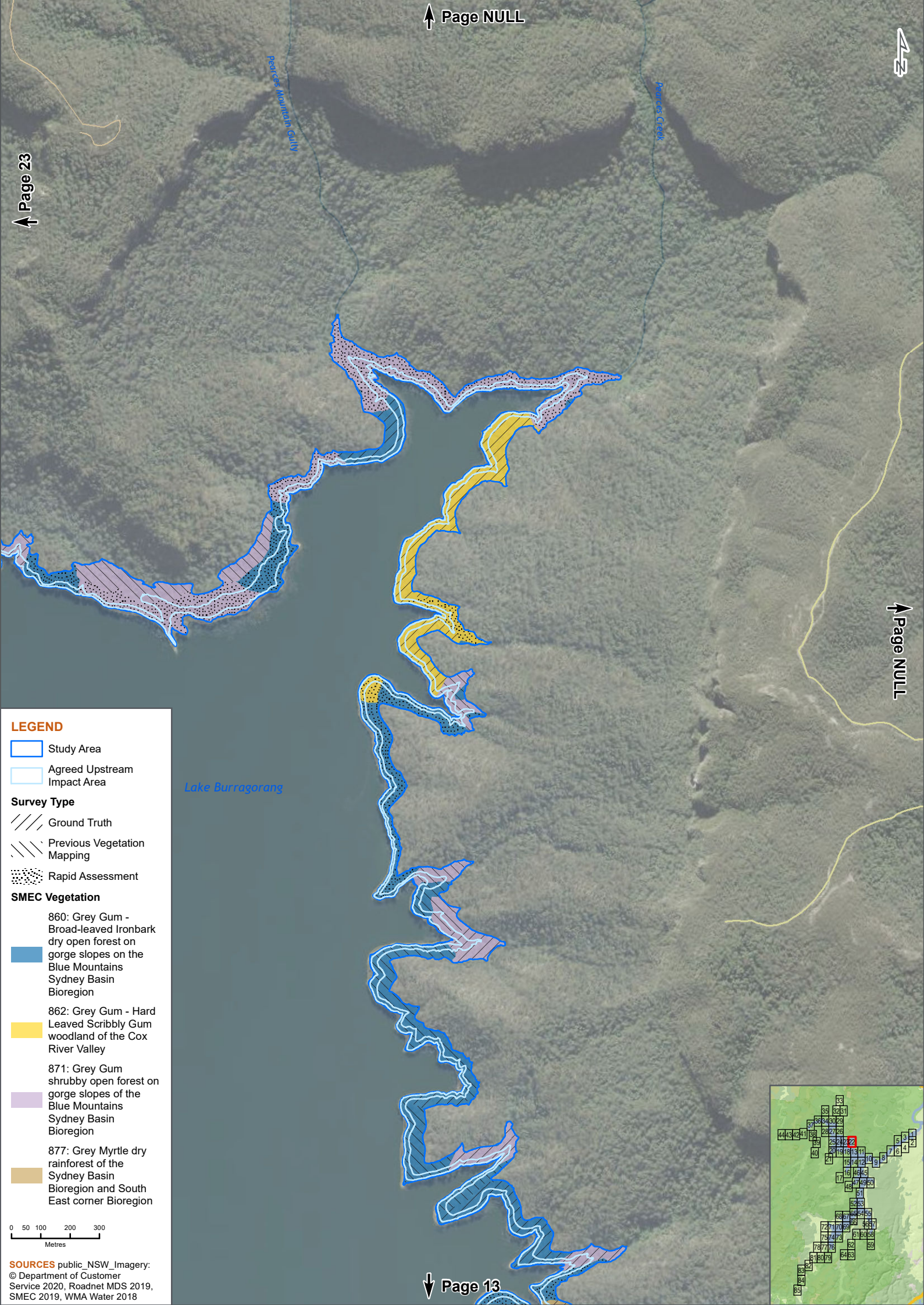
870: Grey Gum - Thin-
leaved Stringybark
grassy woodland of the
southern Blue
Mountain gorges
Sydney Basin
Bioregion

877: Grey Myrtle dry
rainforest of the
Sydney Basin
Bioregion and South
East corner Bioregion

0 50 100 200 300
Metres

SOURCES public_NSW_Imagery:
© Department of Customer
Service 2020, Roadnet MDS 2019,
SMEC 2019, WMA Water 2018





LEGEND

Study Area

Agreed Upstream Impact Area

Survey Type

Ground Truth

Previous Vegetation Mapping

Rapid Assessment

SMEC Vegetation

860: Grey Gum - Broad-leaved Ironbark dry open forest on gorge slopes on the Blue Mountains Sydney Basin Bioregion

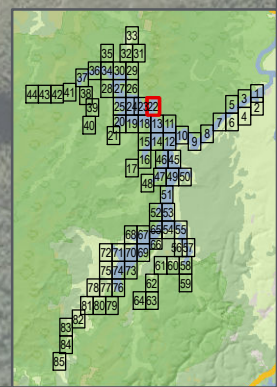
862: Grey Gum - Hard Leaved Scribbly Gum woodland of the Cox River Valley

871: Grey Gum shrubby open forest on gorge slopes of the Blue Mountains Sydney Basin Bioregion

877: Grey Myrtle dry rainforest of the Sydney Basin Bioregion and South East corner Bioregion

0 50 100 200 300 Metres

SOURCES public_NSW_Imagery: © Department of Customer Service 2020, Roadnet MDS 2019, SMEC 2019, WMA Water 2018



LEGEND

Study Area

Agreed Upstream Impact Area

Survey Type

Ground Truth

Previous Vegetation Mapping

Rapid Assessment

SMEC Vegetation

832: Forest Red Gum - Narrow-leaved Ironbark open forest of the southern Blue Mountains gorges Sydney Basin Bioregion

860: Grey Gum - Broad-leaved Ironbark dry open forest on gorge slopes on the Blue Mountains Sydney Basin Bioregion

870: Grey Gum - Thin-leaved Stringybark grassy woodland of the southern Blue Mountain gorges Sydney Basin Bioregion

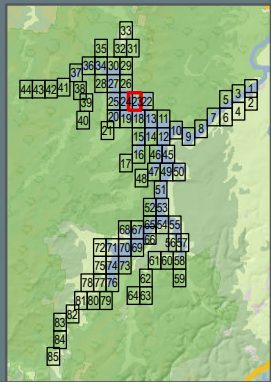
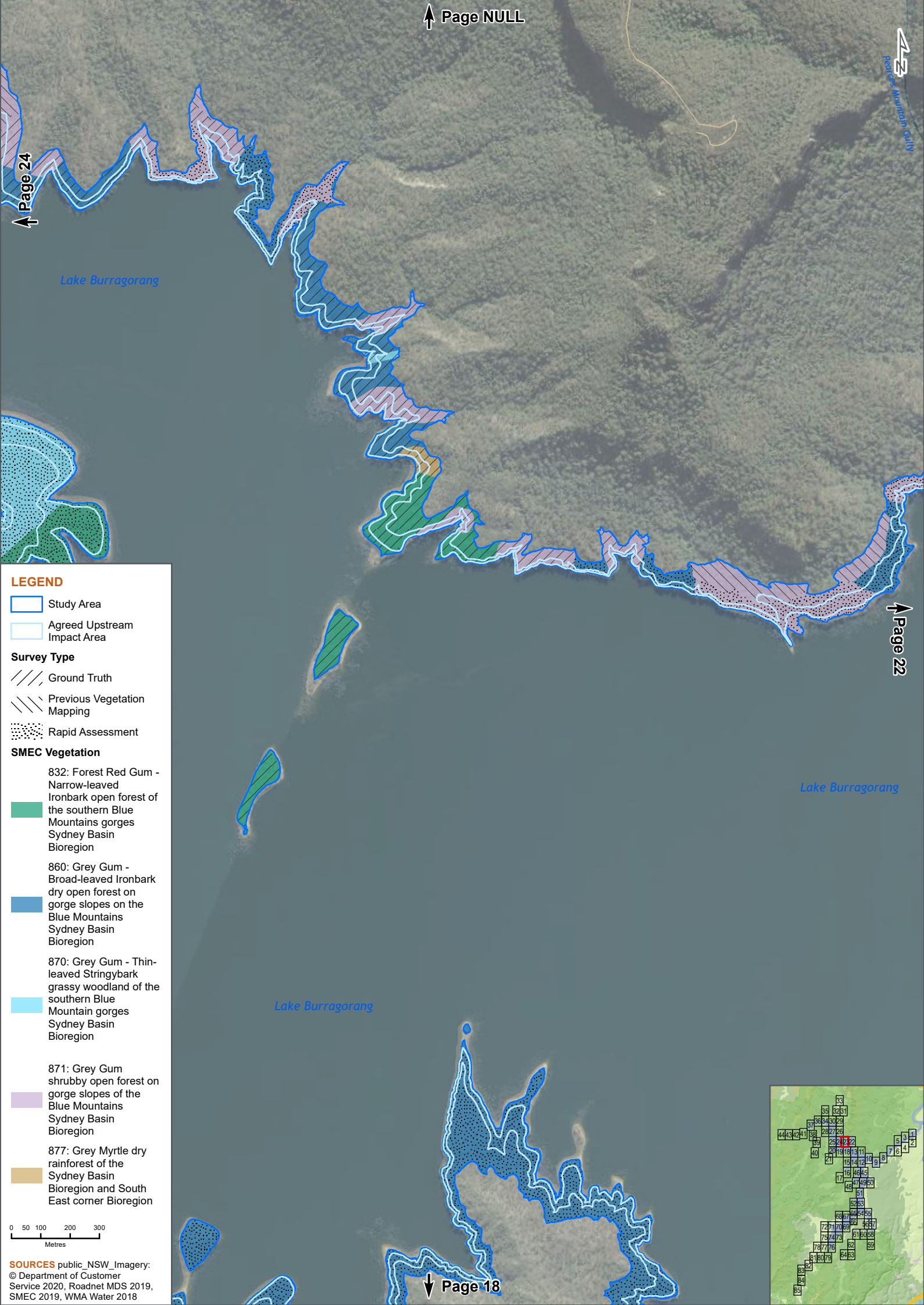
871: Grey Gum shrubby open forest on gorge slopes of the Blue Mountains Sydney Basin Bioregion

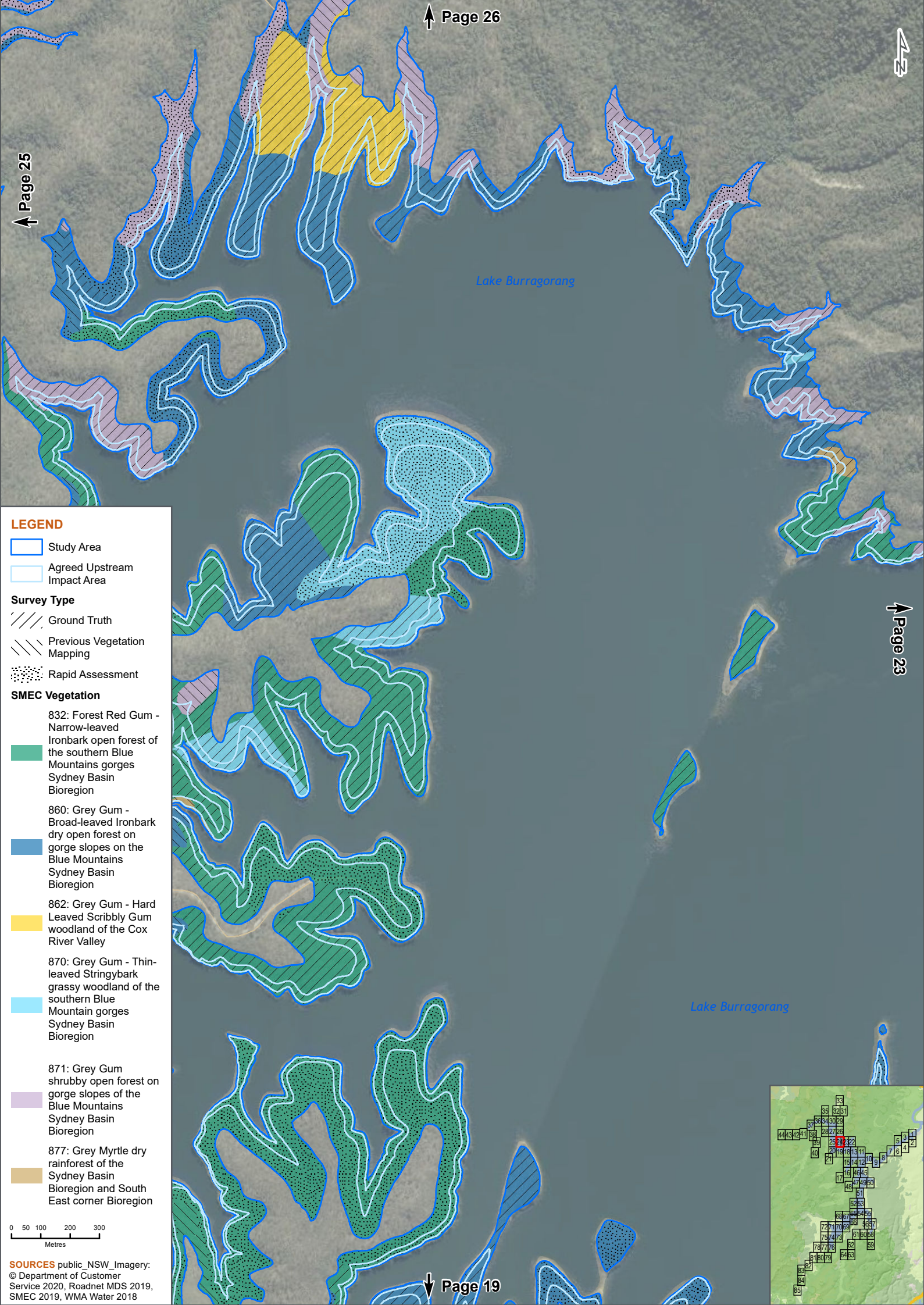
877: Grey Myrtle dry rainforest of the Sydney Basin Bioregion and South East corner Bioregion

0 50 100 200 300

Metres

SOURCES public_NSW_Imagery:
© Department of Customer Service 2020, Roadnet MDS 2019, SMEC 2019, WMA Water 2018





LEGEND

- Study Area
- Agreed Upstream Impact Area

Survey Type

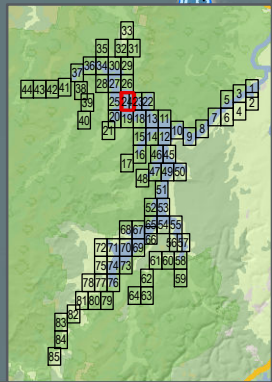
- Ground Truth
- Previous Vegetation Mapping
- Rapid Assessment

SMEC Vegetation

- 832: Forest Red Gum - Narrow-leaved Ironbark open forest of the southern Blue Mountains gorges Sydney Basin Bioregion
- 860: Grey Gum - Broad-leaved Ironbark dry open forest on gorge slopes on the Blue Mountains Sydney Basin Bioregion
- 862: Grey Gum - Hard Leaved Scribbly Gum woodland of the Cox River Valley
- 870: Grey Gum - Thin-leaved Stringybark grassy woodland of the southern Blue Mountain gorges Sydney Basin Bioregion
- 871: Grey Gum shrubby open forest on gorge slopes of the Blue Mountains Sydney Basin Bioregion
- 877: Grey Myrtle dry rainforest of the Sydney Basin Bioregion and South East corner Bioregion



0 50 100 200 300
Metres

SOURCES public_NSW_Imagery:
© Department of Customer Service 2020, Roadnet MDS 2019, SMEC 2019, WMA Water 2018






Lake Burragarang

LEGEND

-  Study Area
-  Agreed Upstream Impact Area

Survey Type

-  Ground Truth
-  Previous Vegetation Mapping
-  Rapid Assessment

SMEC Vegetation

832: Forest Red Gum - Narrow-leaved Ironbark open forest of the southern Blue Mountains gorges Sydney Basin Bioregion

860: Grey Gum - Broad-leaved Ironbark dry open forest on gorge slopes on the Blue Mountains Sydney Basin Bioregion

862: Grey Gum - Hard Leaved Scribbly Gum woodland of the Cox River Valley

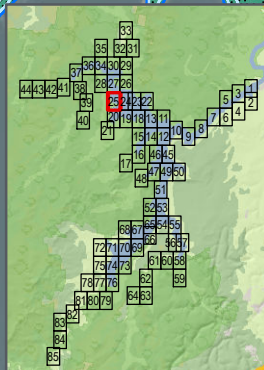
870: Grey Gum - Thin-leaved Stringybark grassy woodland of the southern Blue Mountain gorges Sydney Basin Bioregion

871: Grey Gum shrubby open forest on gorge slopes of the Blue Mountains Sydney Basin Bioregion

877: Grey Myrtle dry rainforest of the Sydney Basin Bioregion and South East corner Bioregion

0 50 100 200 300
Metres

SOURCES public_NSW_Imagery:
© Department of Customer Service 2020, Roadnet MDS 2019, SMEC 2019, WMA Water 2018



LEGEND

Study Area

Agreed Upstream Impact Area

Survey Type

Ground Truth

Previous Vegetation Mapping

Rapid Assessment

SMEC Vegetation

1401: Narrow-leaved Ironbark - Forest Red Gum on rocky slopes of the lower Burragorang Gorge Sydney Basin Bioregion

832: Forest Red Gum - Narrow-leaved Ironbark open forest of the southern Blue Mountains gorges Sydney Basin Bioregion

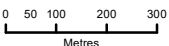
860: Grey Gum - Broad-leaved Ironbark dry open forest on gorge slopes on the Blue Mountains Sydney Basin Bioregion

862: Grey Gum - Hard Leaved Scribbly Gum woodland of the Cox River Valley

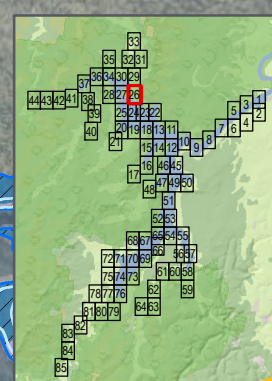
870: Grey Gum - Thin-leaved Stringybark grassy woodland of the southern Blue Mountain gorges Sydney Basin Bioregion

871: Grey Gum shrubby open forest on gorge slopes of the Blue Mountains Sydney Basin Bioregion

877: Grey Myrtle dry rainforest of the Sydney Basin Bioregion and South East corner Bioregion



SOURCES public_NSW_Imagery:
 © Department of Customer Service 2020, Roadnet MDS 2019, SMEC 2019, WMA Water 2018



LEGEND

Study Area

Agreed Upstream Impact Area

Survey Type

Ground Truth

Previous Vegetation Mapping

Rapid Assessment

SMEC Vegetation

1401: Narrow-leaved Ironbark - Forest Red Gum on rocky slopes of the lower Burragorang Gorge Sydney Basin Bioregion

832: Forest Red Gum - Narrow-leaved Ironbark open forest of the southern Blue Mountains gorges Sydney Basin Bioregion

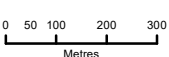
860: Grey Gum - Broad-leaved Ironbark dry open forest on gorge slopes on the Blue Mountains Sydney Basin Bioregion

862: Grey Gum - Hard Leaved Scribbly Gum woodland of the Cox River Valley

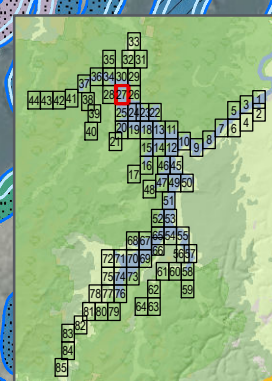
870: Grey Gum - Thin-leaved Stringybark grassy woodland of the southern Blue Mountain gorges Sydney Basin Bioregion

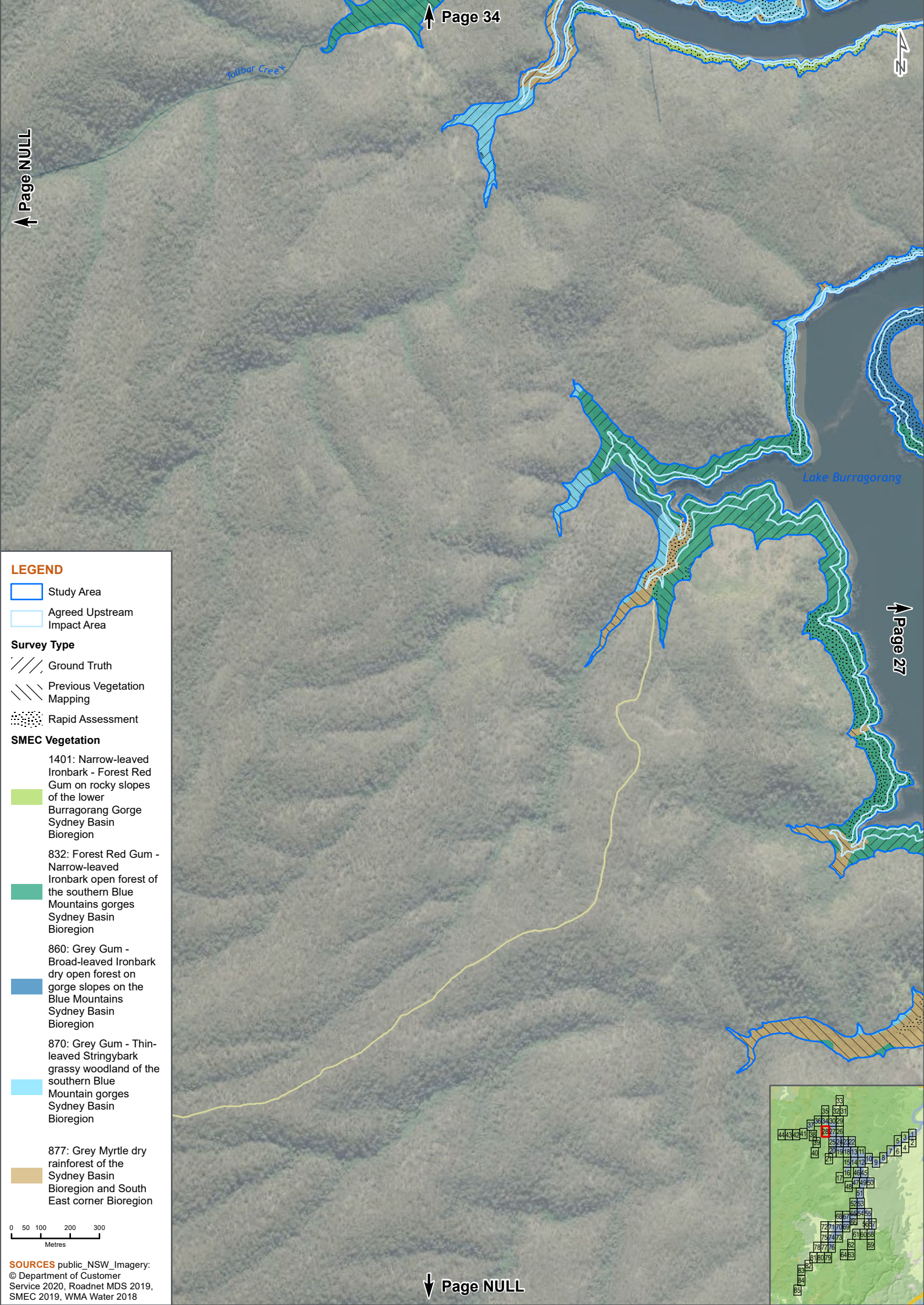
871: Grey Gum shrubby open forest on gorge slopes of the Blue Mountains Sydney Basin Bioregion

877: Grey Myrtle dry rainforest of the Sydney Basin Bioregion and South East corner Bioregion



SOURCES public_NSW_Imagery:
© Department of Customer Service 2020, Roadnet MDS 2019, SMEC 2019, WMA Water 2018





Page NULL

Page 34

Page 27

LEGEND

Study Area

Agreed Upstream Impact Area

Survey Type

Ground Truth

Previous Vegetation Mapping

Rapid Assessment

SMEC Vegetation

1401: Narrow-leaved Ironbark - Forest Red Gum on rocky slopes of the lower Burragorang Gorge Sydney Basin Bioregion

832: Forest Red Gum - Narrow-leaved Ironbark open forest of the southern Blue Mountains gorges Sydney Basin Bioregion

860: Grey Gum - Broad-leaved Ironbark dry open forest on gorge slopes on the Blue Mountains Sydney Basin Bioregion

870: Grey Gum - Thin-leaved Stringybark grassy woodland of the southern Blue Mountain gorges Sydney Basin Bioregion

877: Grey Myrtle dry rainforest of the Sydney Basin Bioregion and South East corner Bioregion

0 50 100 200 300

 Metres

SOURCES public_NSW_Imagery:
© Department of Customer Service 2020, Roadnet MDS 2019, SMEC 2019, WMA Water 2018

Page NULL

LEGEND

Study Area

Agreed Upstream Impact Area

Survey Type

Ground Truth

Previous Vegetation Mapping

Rapid Assessment

SMEC Vegetation

1401: Narrow-leaved Ironbark - Forest Red Gum on rocky slopes of the lower Burragorang Gorge Sydney Basin Bioregion

832: Forest Red Gum - Narrow-leaved Ironbark open forest of the southern Blue Mountains gorges Sydney Basin Bioregion

860: Grey Gum - Broad-leaved Ironbark dry open forest on gorge slopes on the Blue Mountains Sydney Basin Bioregion

862: Grey Gum - Hard Leaved Scribbly Gum woodland of the Cox River Valley

870: Grey Gum - Thin-leaved Stringybark grassy woodland of the southern Blue Mountain gorges Sydney Basin Bioregion

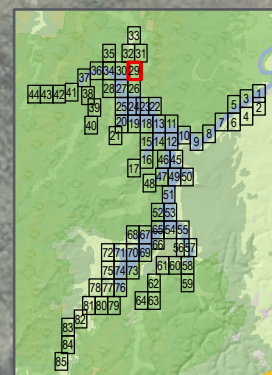
871: Grey Gum shrubby open forest on gorge slopes of the Blue Mountains Sydney Basin Bioregion

877: Grey Myrtle dry rainforest of the Sydney Basin Bioregion and South East corner Bioregion

941: Mountain Blue Gum - Thin-leaved Stringybark open forest on river flat alluvium in the Sydney Basin Bioregion

0 50 100 200 300 Metres

SOURCES public_NSW_Imagery: © Department of Customer Service 2020, Roadnet MDS 2019, SMEC 2019, WMA Water 2018



LEGEND

- Study Area
- Agreed Upstream Impact Area

Survey Type

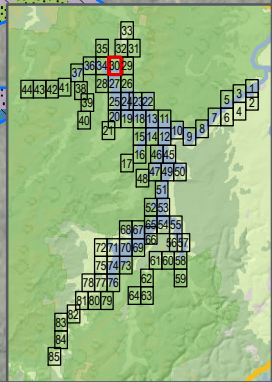
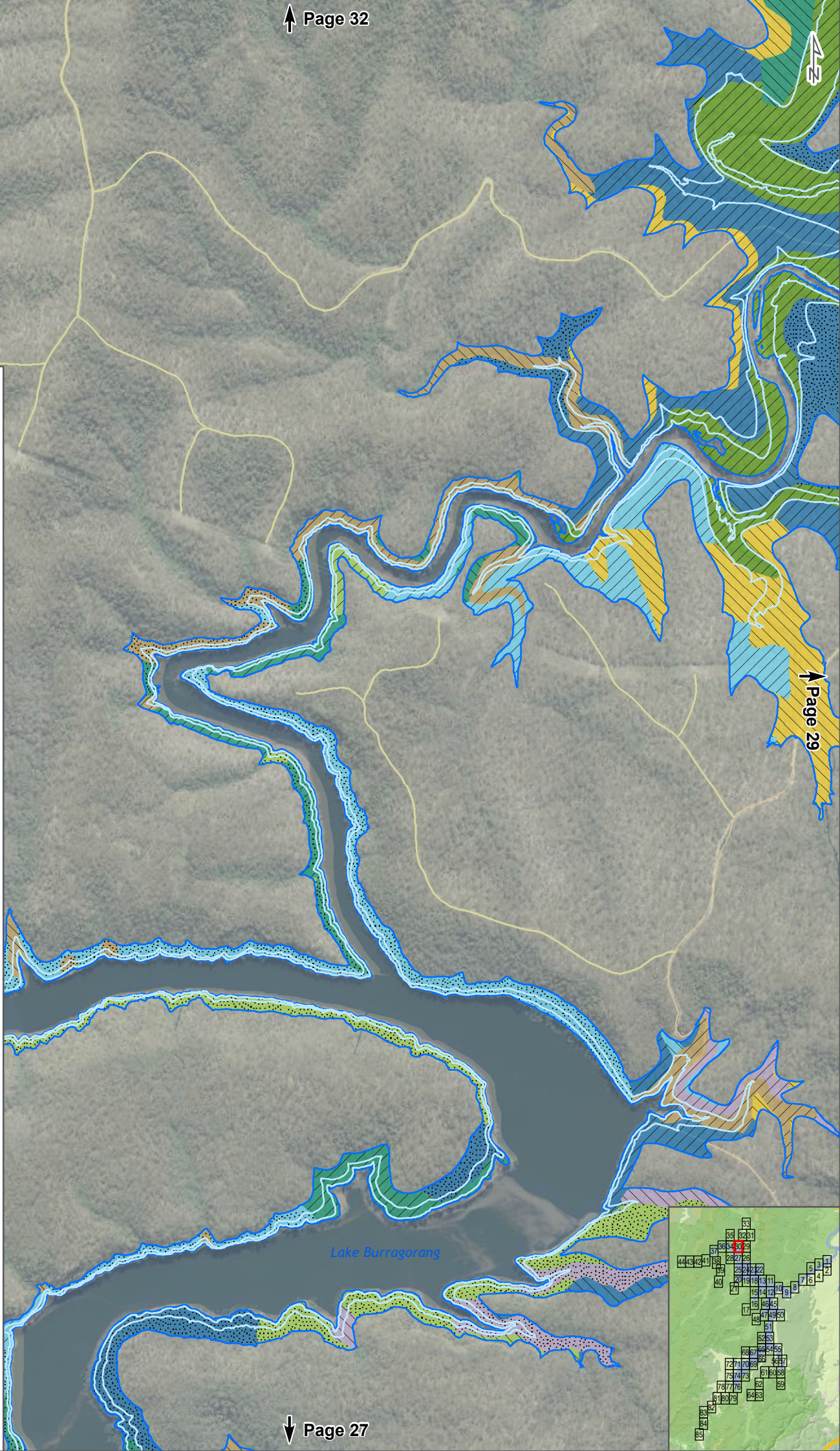
- Ground Truth
- Previous Vegetation Mapping
- Rapid Assessment

SMEC Vegetation

- 1401: Narrow-leaved Ironbark - Forest Red Gum on rocky slopes of the lower Burragorang Gorge Sydney Basin Bioregion
- 832: Forest Red Gum - Narrow-leaved Ironbark open forest of the southern Blue Mountains gorges Sydney Basin Bioregion
- 860: Grey Gum - Broad-leaved Ironbark dry open forest on gorge slopes on the Blue Mountains Sydney Basin Bioregion
- 862: Grey Gum - Hard Leaved Scribbly Gum woodland of the Cox River Valley
- 870: Grey Gum - Thin-leaved Stringybark grassy woodland of the southern Blue Mountain gorges Sydney Basin Bioregion
- 871: Grey Gum shrubby open forest on gorge slopes of the Blue Mountains Sydney Basin Bioregion
- 877: Grey Myrtle dry rainforest of the Sydney Basin Bioregion and South East corner Bioregion
- 941: Mountain Blue Gum - Thin-leaved Stringybark open forest on river flat alluvium in the Sydney Basin Bioregion

0 50 100 200 300
Metres

SOURCES public_NSW_Imagery:
© Department of Customer
Service 2020, Roadnet MDS 2019,
SMEC 2019, WMA Water 2018



LEGEND

Study Area

Agreed Upstream Impact Area

Survey Type

Ground Truth

Previous Vegetation Mapping

Rapid Assessment

SMEC Vegetation

832: Forest Red Gum - Narrow-leaved Ironbark open forest of the southern Blue Mountains gorges Sydney Basin Bioregion

860: Grey Gum - Broad-leaved Ironbark dry open forest on gorge slopes on the Blue Mountains Sydney Basin Bioregion

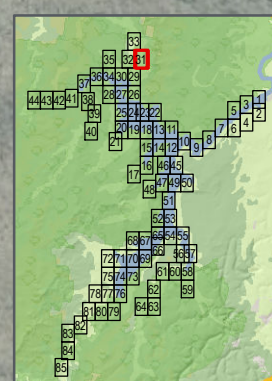
862: Grey Gum - Hard Leaved Scribbly Gum woodland of the Cox River Valley

871: Grey Gum shrubby open forest on gorge slopes of the Blue Mountains Sydney Basin Bioregion

941: Mountain Blue Gum - Thin-leaved Stringybark open forest on river flat alluvium in the Sydney Basin Bioregion

0 50 100 200 300 Metres

SOURCES public_NSW_Imagery: © Department of Customer Service 2020, Roadnet MDS 2019, SMEC 2019, WMA Water 2018



LEGEND

Study Area

Agreed Upstream Impact Area

Survey Type

Ground Truth

Previous Vegetation Mapping

Rapid Assessment

SMEC Vegetation

832: Forest Red Gum - Narrow-leaved Ironbark open forest of the southern Blue Mountains gorges Sydney Basin Bioregion

860: Grey Gum - Broad-leaved Ironbark dry open forest on gorge slopes on the Blue Mountains Sydney Basin Bioregion

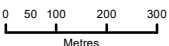
862: Grey Gum - Hard Leaved Scribbly Gum woodland of the Cox River Valley

870: Grey Gum - Thin-leaved Stringybark grassy woodland of the southern Blue Mountain gorges Sydney Basin Bioregion

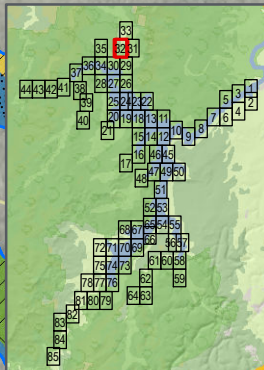
871: Grey Gum shrubby open forest on gorge slopes of the Blue Mountains Sydney Basin Bioregion

877: Grey Myrtle dry rainforest of the Sydney Basin Bioregion and South East corner Bioregion



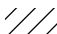
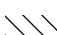





941: Mountain Blue Gum - Thin-leaved Stringybark open forest on river flat alluvium in the Sydney Basin Bioregion

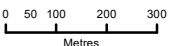


SOURCES public_NSW_Imagery:
 © Department of Customer Service 2020, Roadnet MDS 2019, SMEC 2019, WMA Water 2018

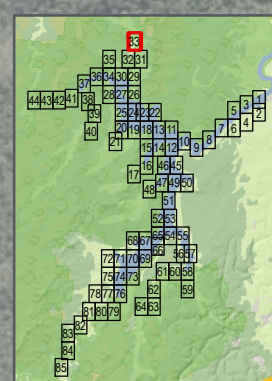


LEGEND

-  Study Area
-  Agreed Upstream Impact Area
- Survey Type**
 -  Ground Truth
 -  Previous Vegetation Mapping
- SMEC Vegetation**
 -  832: Forest Red Gum - Narrow-leaved Ironbark open forest of the southern Blue Mountains gorges Sydney Basin Bioregion
 -  860: Grey Gum - Broad-leaved Ironbark dry open forest on gorge slopes on the Blue Mountains Sydney Basin Bioregion
 -  862: Grey Gum - Hard Leaved Scribbly Gum woodland of the Cox River Valley
 -  871: Grey Gum shrubby open forest on gorge slopes of the Blue Mountains Sydney Basin Bioregion
 -  941: Mountain Blue Gum - Thin-leaved Stringybark open forest on river flat alluvium in the Sydney Basin Bioregion



SOURCES public_NSW_Imagery:
© Department of Customer
Service 2020, Roadnet MDS 2019,
SMEC 2019, WMA Water 2018



LEGEND

Study Area

Agreed Upstream Impact Area

Survey Type

Ground Truth

Previous Vegetation Mapping

Rapid Assessment

SMEC Vegetation

1105: River Oak open forest of major streams Sydney Basin Bioregion and South East Corner Bioregion

1401: Narrow-leaved Ironbark - Forest Red Gum on rocky slopes of the lower Burratorang Gorge Sydney Basin Bioregion

832: Forest Red Gum - Narrow-leaved Ironbark open forest of the southern Blue Mountains gorges Sydney Basin Bioregion

860: Grey Gum - Broad-leaved Ironbark dry open forest on gorge slopes on the Blue Mountains Sydney Basin Bioregion

870: Grey Gum - Thin-leaved Stringybark grassy woodland of the southern Blue Mountains gorges Sydney Basin Bioregion

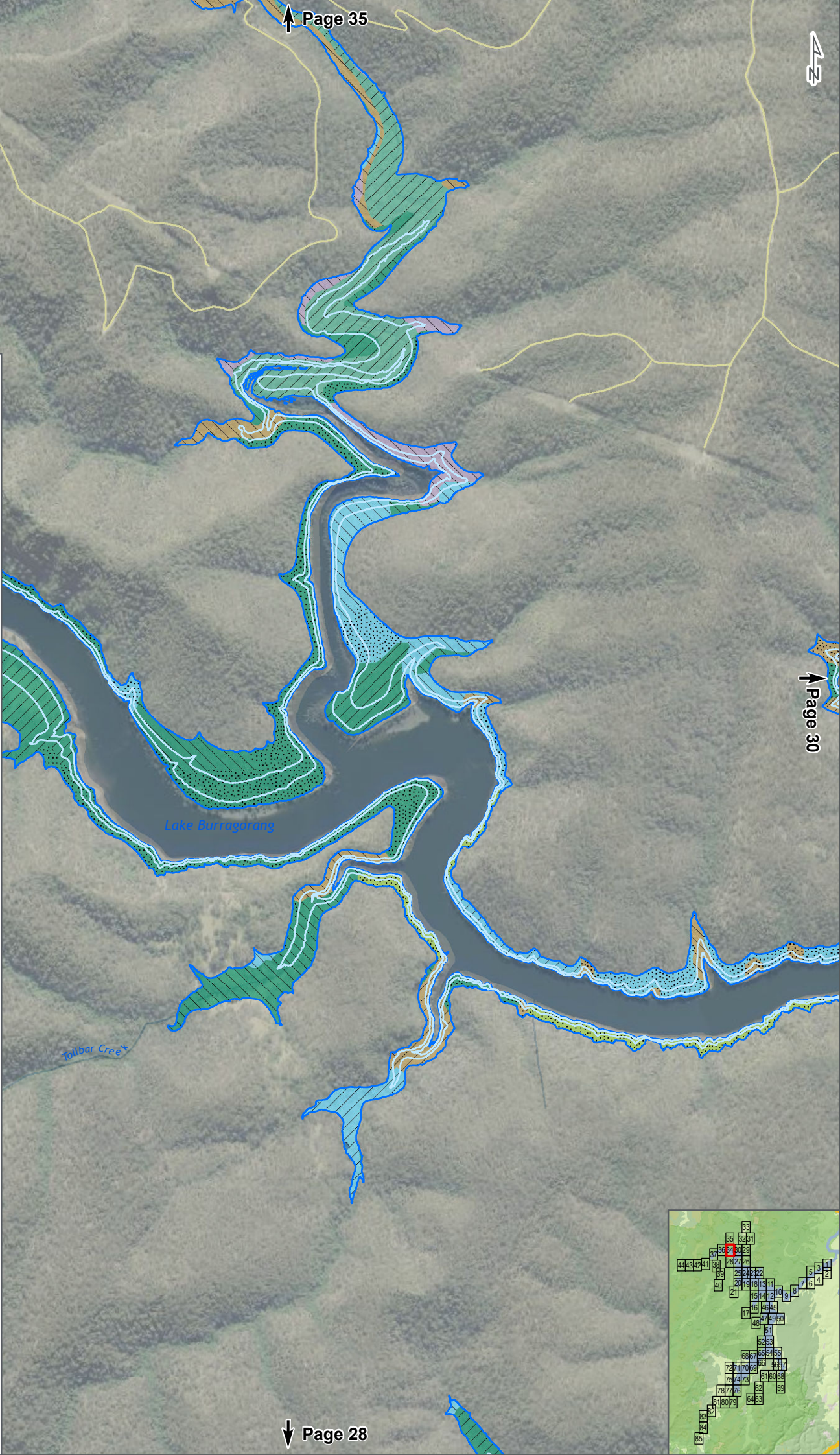
871: Grey Gum shrubby open forest on gorge slopes of the Blue Mountains Sydney Basin Bioregion

875: Grey Myrtle - Lilly Pilly dry rainforest in dry gullies of the Sydney Basin Bioregion and South East Corner Bioregion

877: Grey Myrtle dry rainforest of the Sydney Basin Bioregion and South East corner Bioregion

0 50 100 200 300 Metres

SOURCES public_NSW_Imagery: © Department of Customer Service 2020, Roadnet MDS 2019, SMEC 2019, WMA Water 2018



LEGEND

- Study Area
- Agreed Upstream Impact Area

Survey Type

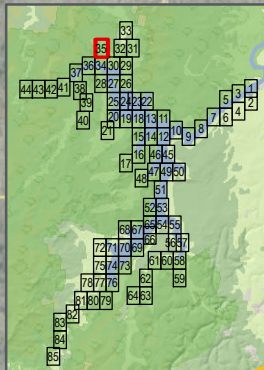
- Ground Truth
- Previous Vegetation Mapping
- Rapid Assessment

SMEC Vegetation

- 1105: River Oak open forest of major streams Sydney Basin Bioregion and South East Corner Bioregion
- 832: Forest Red Gum - Narrow-leaved Ironbark open forest of the southern Blue Mountains gorges Sydney Basin Bioregion
- 870: Grey Gum - Thin-leaved Stringybark grassy woodland of the southern Blue Mountain gorges Sydney Basin Bioregion
- 871: Grey Gum shrubby open forest on gorge slopes of the Blue Mountains Sydney Basin Bioregion
- 875: Grey Myrtle - Lilly Pilly dry rainforest in dry gullies of the Sydney Basin Bioregion and South East Corner Bioregion
- 877: Grey Myrtle dry rainforest of the Sydney Basin Bioregion and South East corner Bioregion

0 50 100 200 300
Metres

SOURCES public_NSW_Imagery:
© Department of Customer
Service 2020, Roadnet MDS 2019,
SMEC 2019, WMA Water 2018



LEGEND

Study Area

Agreed Upstream
Impact Area

Survey Type

Ground Truth

Previous Vegetation
Mapping

Rapid Assessment

SMEC Vegetation

832: Forest Red Gum -
Narrow-leaved
Ironbark open forest of
the southern Blue
Mountains gorges
Sydney Basin
Bioregion

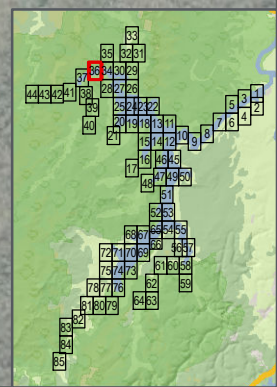
870: Grey Gum - Thin-
leaved Stringybark
grassy woodland of the
southern Blue
Mountain gorges
Sydney Basin
Bioregion

871: Grey Gum
shrubby open forest on
gorge slopes of the
Blue Mountains
Sydney Basin
Bioregion

877: Grey Myrtle dry
rainforest of the
Sydney Basin
Bioregion and South
East corner Bioregion

0 50 100 200 300
Metres

SOURCES public_NSW_Imagery:
© Department of Customer
Service 2020, Roadnet MDS 2019,
SMEC 2019, WMA Water 2018



Wild Dog Mountains

Black Dog Creek

Lake Burrigorang

LEGEND

- Study Area
- Agreed Upstream Impact Area

Survey Type

- Ground Truth
- Previous Vegetation Mapping
- Rapid Assessment

SMEC Vegetation

1105: River Oak open forest of major streams Sydney Basin Bioregion and South East Corner Bioregion

832: Forest Red Gum - Narrow-leaved Ironbark open forest of the southern Blue Mountains gorges Sydney Basin Bioregion

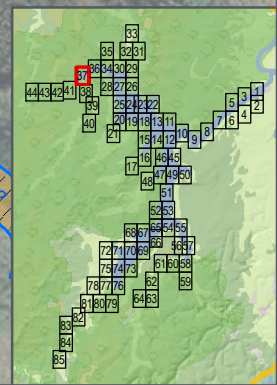
870: Grey Gum - Thin-leaved Stringybark grassy woodland of the southern Blue Mountain gorges Sydney Basin Bioregion

871: Grey Gum shrubby open forest on gorge slopes of the Blue Mountains Sydney Basin Bioregion

877: Grey Myrtle dry rainforest of the Sydney Basin Bioregion and South East corner Bioregion

0 50 100 200 300
Metres

SOURCES public_NSW_Imagery:
© Department of Customer Service 2020, Roadnet MDS 2019, SMEC 2019, WMA Water 2018



LEGEND

Study Area

Agreed Upstream Impact Area

Survey Type

Ground Truth

Previous Vegetation Mapping

Rapid Assessment

SMEC Vegetation

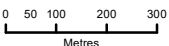
1105: River Oak open forest of major streams Sydney Basin Bioregion and South East Corner Bioregion

832: Forest Red Gum - Narrow-leaved Ironbark open forest of the southern Blue Mountains gorges Sydney Basin Bioregion

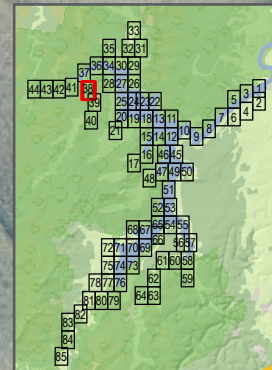
870: Grey Gum - Thin-leaved Stringybark grassy woodland of the southern Blue Mountain gorges Sydney Basin Bioregion

871: Grey Gum shrubby open forest on gorge slopes of the Blue Mountains Sydney Basin Bioregion


877: Grey Myrtle dry rainforest of the Sydney Basin Bioregion and South East corner Bioregion



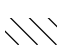
SOURCES public_NSW_Imagery: © Department of Customer Service 2020, Roadnet MDS 2019, SMEC 2019, WMA Water 2018



LEGEND

 Study Area

Survey Type

 Previous Vegetation Mapping

SMEC Vegetation

1105: River Oak open forest of major streams
Sydney Basin Bioregion and South East Corner Bioregion

832: Forest Red Gum - Narrow-leaved Ironbark open forest of the southern Blue Mountains gorges
Sydney Basin Bioregion

870: Grey Gum - Thin-leaved Stringybark grassy woodland of the southern Blue Mountains gorges
Sydney Basin Bioregion

877: Grey Myrtle dry rainforest of the Sydney Basin Bioregion and South East corner Bioregion

0 50 100 200 300
Metres

SOURCES public_NSW_Imagery:
© Department of Customer Service 2020, Roadnet MDS 2019, SMEC 2019, WMA Water 2018

