



# Coffs Harbour Bypass Project

Photographic Archival Recording – Former Coffs Heights Post Office

# Contents

1	Introduction .....	3
1.1	Project background .....	3
1.2	Location of the project .....	4
1.3	Methodology .....	4
1.4	Authorship .....	5
2	Historical background .....	7
2.1	Non-Aboriginal history .....	7
2.1.1	Development of Coffs Harbour .....	7
2.2	Former Coffs Heights Post Office .....	10
3	Physical description .....	12
3.1	Site context and setting .....	12
3.2	Former Coffs Heights Post Office .....	13
3.3	Heritage significance .....	16
3.3.1	Assessment of significance .....	16
3.3.2	Statement of significance .....	17
4	Catalogue sheet .....	18
4.1	Former Coffs Heights Post Office .....	18
5	Reference aerial .....	23
6	Material specifications .....	25
6.1	Camera .....	25
6.2	Materials used .....	25
7	References .....	26
8	Appendix A: Photograph contact sheets .....	28

<b>Author:</b>	Artefact Heritage
<b>Date:</b>	19 August 2021
<b>Version:</b>	Final
<b>Reference:</b>	-
<b>Division:</b>	-
<b>Review date:</b>	19 August 2021

# 1 Introduction

---

## 1.1 Project background

Transport for NSW (TfNSW) are proposing to construct the Coffs Harbour Bypass project (the project), which would include a 12-kilometre bypass of Coffs Harbour from the south of Englands Road to Korora Hill in the north and a two-kilometre upgrade of the existing highway between Korora Hill and Sapphire. The project would provide a four-lane divided highway that bypasses Coffs Harbour, passing through the North Boambee Valley, Roberts Hill and then traversing the foothills of the Coffs Harbour basin to the west and north to Korora Hill.

A non-Aboriginal heritage assessment<sup>1</sup> was prepared to support the Environmental Impact Statement (EIS) for the project in 2019. This identified six unlisted non-Aboriginal significant heritage items that would be impacted by the project. In order to mitigate impacts to these items, the following recommendation for the preparation of Photographic Archival Recording (PAR) was made:<sup>2</sup>

---

***Recommendation 2. Prepare an archival record prior to impact and at the completion of the project***

*Archival recording is recommended for the Coffs Harbour Banana Plantation, former **Coffs Heights Post Office**, the North Coast Railway, Old Coast Road Bridge No.1, Old Coast Road Bridge No.2 and the Marked Tree Stumps. The archival records should record the process of development and alterations to heritage values. A program of archival recording should be completed prior to impacts. All archival recording should be completed in accordance with the Heritage Branch guidelines *How to Prepare Archival Records for Heritage Items and Photographic Recording of Heritage Items Using Film or Digital Capture*.*

---

Artefact Heritage (Artefact) have been engaged by TfNSW to prepare PAR reports for all non-Aboriginal heritage items which would be directly or visually impacted by the project, prior to impact.

Additional PAR reports will be produced following the completion of the project. This report has been prepared to provide the PAR for the unlisted heritage item “Former Coffs Heights Post Office”, an item of local heritage significance.

On 2 November 2020, the project was approved under the *Environmental Planning and Assessment Act 1979*. This report meets the requirements of the Minister’s Condition of Approval E30<sup>3</sup>:

---

<sup>1</sup> Biosis, July 2019. *Coffs Harbour Bypass – Non-Aboriginal Heritage Assessment*. Report to Roads and Maritime Services.

<sup>2</sup> *Ibid*, p. vii.

<sup>3</sup> Minister for Planning and Public Spaces, 2 November 2020. *Minister’s Condition of Approval E30*. SSI-7666. Infrastructure approval to Transport for NSW.

Coffs Harbour Bypass Project: Photographic Archival Recording – Former Coffs Heights Post Office – August 2021

---

*A Non-Aboriginal Heritage Report documenting all archival recording and details of further historical research either undertaken or to be carried out. The Non-Aboriginal Heritage Report must be prepared by a suitably qualified heritage specialist in accordance with guidelines and standards issued by the NSW Heritage Council and Heritage NSW.*

---

## **1.2 Location of the project**

The Former Coffs Heights Post Office is located within the Coffs Harbour Local Government Area (LGA), at 353C Coramba Road, in the suburb of Coffs Harbour (Figure 1), approximately 4 kilometres north of the Coffs Harbour city centre. The Former Coffs Heights Post Office is situated within Lot 730 DP 1066743, directly adjacent (southwest) of the proposed Coffs Harbour Bypass Route.

## **1.3 Methodology**

This archival recording was prepared in accordance with the following guidelines:

- How to Prepare Archival Records of Heritage Items (NSW Heritage Office 1998)
- Photographic Recording of Heritage Items Using Film or Digital Capture (NSW Heritage Office 2006).
- These guidelines recommend that the following be included in the record:
- Three copies of the photographic report including catalogue sheets, photographic plan and supplementary maps
- Three sets of thumbnail image sheets (e.g. A4 page with six images by six images) showing images and reference numbers
- Thumbnail sheets processed with archivally stable inks on archivally acceptable photographic paper and cross referenced to catalogue sheets
- Three copies of CD or DVD containing electronic image files saved as TIFF files with associated metadata, and cross-referenced to catalogue sheets
- One full set of 10.5 cm by 14.8 cm (A6) prints processed with archivally stable inks on archivally acceptable photographic paper.

This report meets the above guidelines. The archival recording includes an historical background and a brief description and discussion of the significance of the Former Coffs Heights Post Office.

Photographic recording of the Former Coffs Heights Post Office was carried out on 1 September 2020 by Jessica Horton (Heritage Consultant, Artefact Heritage) and Adele Zubrzycka (Senior Heritage Consultant, Artefact Heritage).

Each photograph was recorded on a photo log with the direction noted and a description provided (Table 2). The general locations and direction of the photographs were marked on an accompanying aerial map of the study area. Thumbnails of the final archival photographs are provided in Appendix A, and all digital photographs are provided on an accompanying CD in RAW, TIFF and JPEG formats. A select range of key photographs have been printed at A6 size and included in the record.

## **1.4 Authorship**

This report was prepared by Jessica Horton and Adele Zubrzycka with management input and review provided by Duncan Jones (Principal, Artefact Heritage) and Sandra Wallace (Managing Director, Artefact Heritage).

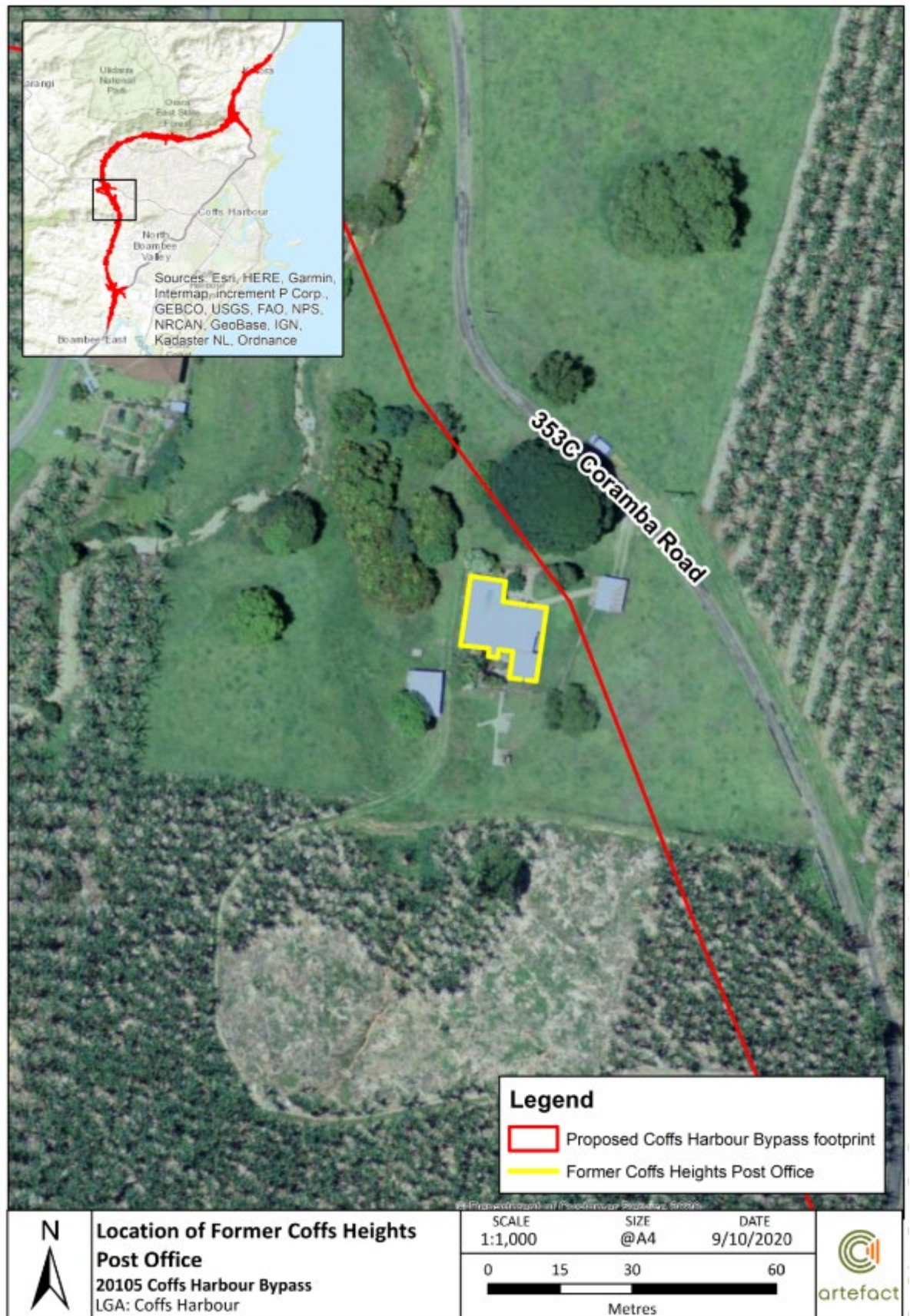


Figure 1: Location of the Former Coffs Heights Post Office

## 2 Historical background

---

The following background has been prepared to provide a historical overview of land use within and surrounding the Former Coffs Heights Post Office. It aims to provide context for the significance of the post office and the development of Coffs Harbour over time.

The historical background has drawn on the history prepared within the *Coffs Harbour Bypass – Non-Aboriginal Heritage Assessment* report prepared by Biosis in July 2019.

### 2.1 Non-Aboriginal history

#### 2.1.1 Development of Coffs Harbour

In 1847, Captain John Korff sailed into the southern headland at Coffs Harbour aboard his ship the *Brothers* due to a strong southerly gale.<sup>4</sup> His original destination had been the Bellingen River; however, the journey had become too dangerous to continue. Whilst seeking refuge, Korff noted the safety of the coastal configuration, water depth and suitability of the site as a harbour.<sup>5</sup> Following Korff's recommendation, 960-acres of land was reserved by Government Gazette on 24 December 1861. The gazette was misspelled as 'Coffs Harbour'.<sup>6</sup>

Coffs Harbour had been visited sporadically by European settlers from the c1840s for timber getting purposes (see Figure 2). Cedar, pine, ash and beech were common, and evidence of such activities remain within the area in the form of hand-cut tree stumps with remnant footholds.<sup>7</sup> This industry continued steadily into the twentieth century. Due to the extensive land clearances by timber getters, dairy farming in Coffs Harbour gained popularity from 1895 onwards, however the industry saw a downturn by the turn of the twentieth century (Figure 3).<sup>8</sup>

Banana farming, arguably Coffs Harbour's most recognisable industry, was first introduced to the region by German settler Herman Rieck in 1881 (shown in Figure 4).<sup>9</sup> The production of bananas was slow to begin, however with an outbreak of 'bunchy top' disease devastating the banana plantations within the Richmond-Tweed region in the 1920s, Coffs Harbour became the major source of bananas on the north coast. By the 1930s, banana farming overtook dairy farming as the major agricultural industry within Coffs Harbour with 21,000 cases of bananas exported to Sydney via rail in 1935 alone. Banana farming has remained a central industry for the Coffs Harbour economy, shaping the landscape.

---

<sup>4</sup> Ibid.

<sup>5</sup> Biosis, 2019. '*Coffs Harbour Bypass – Non-Aboriginal Heritage Assessment*'. Report to Roads and Maritime Services. p. 25.

<sup>6</sup> Ibid.

<sup>7</sup> Biosis, 2019. '*Coffs Harbour Bypass*'. p. 26.

<sup>8</sup> Biosis, 2019. '*Coffs Harbour Bypass*'. p. 29.

<sup>9</sup> Biosis, 2019. '*Coffs Harbour Bypass*'. p. 32.

Roads were established throughout Coffs Harbour from the 1880s, linking the coastal town to Moonee Moonee, Grafton, and Bellinger. Throughout the twentieth century bridges were established across the numerous creek lines, including Pine Brush Creek.<sup>10</sup> In 1903, a Parliamentary Standing Committee Enquiry was created to discuss the necessity of the North Coast Railway due to increasing populations along the east coast.<sup>11</sup> The railway was constructed in stages: Stage 1 (1915) connected Coffs Harbour to Repton, whilst Stage 2 (1922) connected Coffs Harbour to Glenreagh. The railway was opened in 1923, with the first 'through' train arriving from Sydney in December.<sup>12</sup>



**Figure 2: Timber cutters standing with their axes against a fallen log, Coffs Harbour, c1915.<sup>13</sup>**

---

<sup>10</sup> Biosis, 2019. '*Coffs Harbour Bypass*'. p. 33.

<sup>11</sup> Ibid.

<sup>12</sup> Ibid.

<sup>13</sup> Author unknown, c1915. 'Two unidentified timber cutters standing with their axes against a fallen log, Coffs Harbour'. *Coffs Harbour Regional Museum*. Accessed 8 September 2020, <https://coffsharbour.spydus.com/cgi-bin/spydus.exe/FULL/WPIC/BIBENQ/6847049/433111,8>



**Figure 3: Slab sided creamery, Coffs Harbour, c1900s.<sup>14</sup>**



**Figure 4: Herman and Fanny Rieck on their banana plantation, 1892.<sup>15</sup>**

---

<sup>14</sup> Author unknown, c1900s. 'Slab sided creamery, Coffs Harbour'. *Coffs Harbour Regional Museum*. Accessed online 8 September 2020, <https://coffsharbour.spydus.com/cgi-bin/spydus.exe/FULL/WPIC/BIBENQ/6847315/423384,2>

<sup>15</sup> Author unknown, 1892. 'Herman and Fanny Rieck on their banana plantation.' *Coffs Harbour Regional Museum*. Accessed online 8 September 2020, <https://coffsharbour.spydus.com/cgi-bin/spydus.exe/FULL/WPIC/BIBENQ/6847544/439613,8>

## 2.2 Former Coffs Heights Post Office

The Coffs Heights Post Office was founded in 1915 near the suburb of Red Hill, approximately 6 kilometres west of its current location along Coramba Road. The post office was established to service the numerous railway workers living within workers camps at Coffs Heights and Red Hill.<sup>16</sup> A *Daily Examiner* article from 18 October 1915 describes the post office opening:

*'The application for a post office at Red Hill, four miles from Coffs Harbour, has been granted. It will be known as the Coffs Heights Post Office, and October 18 [1915] has been fixed as the opening date. Mr. Oliver Thompson has been appointed postmaster. The establishment of the office will greatly convenience the railway workers, of whom there are a large number camped in the vicinity.'*<sup>17</sup>

Due to the sporadic nature of the railway construction, the post office was not consistently occupied. A *Daily Examiner* article from 4 October 1919 describes the frequent closures and reopening:

*'With reference to my communication of the 17<sup>th</sup> January last [1919], advising you of the discontinuance of postal and telephone facilities at Coffs Heights, I have to intimate that, as there is now a number of railway workers employed in the vicinity of that place on account of the resumption of work on the Coffs Harbour – Glenreagh section of the North Coast railway line, thereby warranting the reestablishment of the facilities, the allowance post-office at Coffs Heights was re-opened under the charge of Mr John J. Howard on September 15, 1919.'*<sup>18</sup>

Following the completion of the Red Hill railway tunnel and the resignation of the telephone office keeper, the Coffs Heights Post Office officially closed on 21 February 1923.<sup>19</sup>

The post office building was raised and relocated to its current location at 353C Coramba Road by Richard Jack Pike, a ganger on the North Coast Railway sometime following its closure in 1923. The post office building has remained within the Pike family for three generations and has undergone a number of alterations during this time.<sup>20</sup>

---

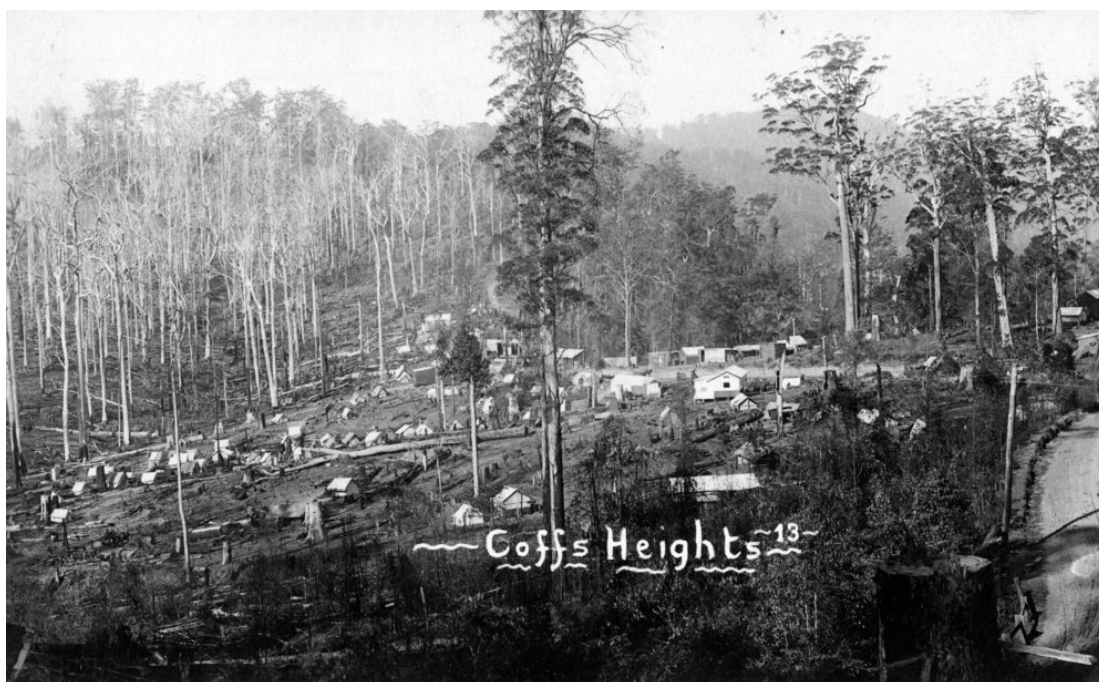
<sup>16</sup> Biosis, 2019. 'Coffs Harbour Bypass'. p. 34.

<sup>17</sup> COFF'S HEIGHTS POST OFFICE, 11 October 1915. *Daily Examiner* (Grafton, NSW: 1915 - 1954), p. 2. Accessed 12 October 2020, <http://nla.gov.au/nla.news-article195176291>

<sup>18</sup> Coffs Heights Telephone, 4 October 1919. *Coffs Harbour Advocate* (NSW: 1907 - 1942; 1946 - 1954), p. 2. Accessed 12 October 2020, <http://nla.gov.au/nla.news-article187851614>

<sup>19</sup> Exit Coffs Heights P.O., 28 February 1923. *Coffs Harbour Advocate* (NSW: 1907 - 1942; 1946 - 1954), p. 2. Accessed 12 October 2020, <http://nla.gov.au/nla.news-article185499374>

<sup>20</sup> Biosis, 2019. 'Coffs Harbour Bypass'. p. 42.



**Figure 5: Coffs Heights railway workers camp, 1915.<sup>21</sup>**



**Figure 6: Coffs Heights railway workers camp, 1921.<sup>22</sup>**

<sup>21</sup> J.H. Howarth, 1915. 'Coffs Heights'. Accessed 12 October 2020, <https://coffs.recollect.net.au/>

<sup>22</sup> J.H. Howarth, 1921. 'Coffs Heights'. Accessed 12 October 2020, <https://coffs.recollect.net.au/>

## 3 Physical description

### 3.1 Site context and setting

The Former Coffs Heights Post Office is located within the Coffs Harbour LGA, at 353C Coramba Road. The property is accessed via an asphalted driveway, which features a bridge crossing Coffs Creek, along Coramba Road; between Bennetts Road (west) and Spagnolos Road (east).

The former post office is situated on cleared land, with views to banana plantations to the west, south and east, and additional cleared land and ancillary buildings to the north (Figure 7 - Figure 12). The proposed Coffs Harbour Bypass route is expected to traverse this landscape in a NW-SE direction, directly northeast of the Former Coffs Heights Post Office.<sup>23</sup> The proposed works would result in a visual impact to the unlisted item as its current setting within a rural property characterised by banana plantation (Figure 11), would be significantly altered and replaced by a heavy traffic bypass.



**Figure 7. Southwest view of Former Coffs Heights Post Office showing views to banana plantations to the south**



**Figure 8. Southwest view of Former Coffs Heights Post Office showing views to banana plantations to the south**



**Figure 9. Northern view of Former Coffs Heights Post Office showing views to banana plantations to the east**



**Figure 10. Northwest view of Former Coffs Heights Post Office showing views of banana plantation to the west**

---

<sup>23</sup> Biosis, July 2019. *Coffs Harbour Bypass – Non-Aboriginal Heritage Assessment*. Report to Roads and Maritime Services. p. 77.



**Figure 11. Western view of Former Coffs Heights Post Office showing existing landscape**



**Figure 12. View north east showing cleared land and ancillary buildings (right) to the north of the Former Coffs Heights Post Office**

### **3.2 Former Coffs Heights Post Office**

The following physical description of the Former Coffs Heights Post Office has been developed from the non-Aboriginal heritage assessment prepared for the project.<sup>24</sup>

The Former Coffs Heights Post Office is a weatherboard residence constructed in the Inter-War period, with elements of the California Bungalow architectural style (Figure 13). The structure was originally constructed as a post office in 1915. Sometime following the Post Office's closure in 1923, the structure was raised and relocated to its current location and extensively altered from this time.

Although the original structure is difficult to identify from the exterior, it comprises the central cabin (comprising four rooms), measuring 12 feet wide and 60 feet long. The four original rooms currently function as a kitchen / dining area, living room, and two bedrooms (Figure 14). Eight rooms have been subsequently added to this central structure, flanking the central cabin to the north and south. This has significantly altered the original layout. These rooms include a kitchen, bathroom, laundry, storage room, sunroom and additional bedrooms (Figure 15).

Original fabric is evident internally, including weatherboard walls; wooden framed, four panelled glass windows; wooden panelled doors; and hardware including hinges and doorknobs (Figure 16 - Figure 18). Where extensions and alterations have been made, modern building materials have been utilised including plywood panelling on walls and ceilings and metal framed windows (Figure 15). However, externally, weatherboard and timber skirting have been used in keeping with the original structure.

The former post office also comprises a rear covered patio area (Figure 19) and lower-level storage / workshop.

---

<sup>24</sup> Biosis, July 2019. *Coffs Harbour Bypass – Non-Aboriginal Heritage Assessment*. Report to Roads and Maritime Services. p. 42.



**Figure 13. South facing view of front façade of Former Coffs Heights Post Office showing weatherboard exterior**



**Figure 14. Southwest view within one of the original rooms of the Former Coffs Heights Post Office, currently functioning as a bedroom. Note the wooden paneling on walls and door**



**Figure 15. East facing view within the sunroom of the Former Coffs Heights Post Office. Note the modern building materials including metal frames glass louvre windows and plywood paneling on walls and ceiling**



**Figure 16. South facing view of doorknob and lock on original front door (now internal) of Former Coffs Heights Post Office**



**Figure 17. North facing view of original timber framed four panelled glass window (now internal) of Former Coffs Heights Post Office**



**Figure 18. Northeast facing view within hallway showing original external weatherboard walling, timber panelled door and timber framed four panelled glass windows (now internal) of Former Coffs Heights Post Office**



**Figure 19: Northwest facing view of Former Coffs Heights Post Office showing rear covered patio**



**Figure 20: West facing view within lower-level storage / workshop area of Former Coffs Heights Post Office**



**Figure 21: Southwest facing view within lower-level storage / workshop area of Former Coffs Heights Post Office showing original framework and timber structure**



**Figure 22: Southwest facing view within lower-level storage / workshop area of Former Coffs Heights Post Office showing original framework and timber structure**



**Former Coffs Heights Post Office Floorplan**  
20105 Coffs Harbour Bypass  
LGA: Coffs Harbour

Scale: 1:180  
Size: A4  
Date: 12-10-2020



**Figure 23: Former Coffs Heights Post Office floorplan**

## 3.3 Heritage significance

### 3.3.1 Assessment of significance

The Former Coffs Heights Post Office is not listed on any statutory or non-statutory heritage registers. The Former Coffs Heights Post Office was assessed as an unlisted item of local heritage significance in the non-Aboriginal heritage assessment for the project.<sup>25</sup>

The non-Aboriginal heritage assessment provided an assessment of heritage significance for the Former Coffs Heights Post Office, which is provided in Table 1 below.<sup>26</sup>

**Table 1: Significance assessment for the Former Coffs Heights Post Office**

Criterion	Description	Significance
A – Historical significance	The Former Coffs Heights Post Office is a rare surviving example of the temporary workers towns that developed around Coffs Harbour during the construction of the North Coast Railway. These towns and the construction of the railway itself were important for the development of Coffs Harbour as a major economic centre on the mid-north coast.	Local
B – Associative significance	The item does not meet the threshold under this criterion.	N/A
C – Aesthetic or Technical significance	The item does not meet the threshold under this criterion.	N/A
D – Social significance	The item does not meet the threshold under this criterion.	N/A
E – Research potential	The item does not meet the threshold under this criterion.	N/A
F – Rarity	The Former Coffs Heights Post Office appears to be a unique, surviving example of a structure built for the temporary workers towns that developed around Coffs Harbour during the construction of the North Coast Railway.	Local
G – Representativeness	The item does not meet the threshold under this criterion.	N/A

---

<sup>25</sup> Biosis, July 2019. *Coffs Harbour Bypass – Non-Aboriginal Heritage Assessment*. Report to Roads and Maritime Services. p. 70.

<sup>26</sup> Biosis, July 2019. *Coffs Harbour Bypass – Non-Aboriginal Heritage Assessment*. Report to Roads and Maritime Services. p. 66.

### 3.3.2 Statement of significance

The following statement of significance was prepared for the Former Coffs Heights Post Office by Biosis in 2019.<sup>27</sup>

---

*The Former Coffs Heights Post Office holds local significance as a surviving example of the short-lived workers towns that appeared around Coffs Harbour during the construction of the North Coast Railway at the start of the twentieth century. The relocation of the post office from Coffs Heights to Coramba Road and its subsequent remodelling limits the archaeological potential and significance of the structure.*

---

---

<sup>27</sup> Biosis, July 2019. *Coffs Harbour Bypass – Non-Aboriginal Heritage Assessment*. Report to Roads and Maritime Services. p. 70.

## 4 Catalogue sheet

The following catalogue sheet (Table 2) includes descriptions of the content of each photograph taken during the PAR, along with the directions in which they were taken. The catalogue sheet should be cross-referenced by number on the accompanying aerial maps (Figure 24) and photograph contact sheets (Appendix A)

All digital photographs (JPEG and RAW) are provided on an accompanying CD.

### 4.1 Former Coffs Heights Post Office

**Table 2: Catalogue sheets of the photographic record of the Former Coffs Heights Post Office.**

Photo #	Frame #	View to	Description	Date
1	DSC_6837	SW	View of Former Coffs Heights Post Office showing existing landscape	01/09/2020
2	DSC_6907	SSW	View of front façade of Coffs Heights Post Office showing existing landscape	01/09/2020
3	DSC_6908	SE	View of front and west façades of Coffs Heights Post Office showing weatherboard exterior	01/09/2020
4	DSC_6909	ESE	View of western façade of Coffs Heights Post Office showing weatherboard and corrugated iron exterior	01/09/2020
5	DSC_6910	NE	View of western façade of Coffs Heights Post Office showing weatherboard and corrugated iron exterior	01/09/2020
6	DSC_6911	NNE	View of rear façade of Coffs Heights Post Office showing rear covered patio	01/09/2020
7	DSC_6912	NW	View of rear façade of Coffs Heights Post Office showing existing landscape	01/09/2020
8	DSC_6913	NNE	Detail view of rear concrete patio of Coffs Heights Post Office showing corrugated iron awning	01/09/2020
9	DSC_6902	NW	View of rear patio and eastern façade showing corrugated iron roof, chimney and surrounding landscape	01/09/2020
10	DSC_6903	WNW	Detail view of eastern façade showing weatherboard exterior, chimney and corrugated iron roof	01/09/2020
11	DSC_6905	SW	View of eastern and front facades of Former Coffs Heights Post Office showing existing landscape	01/09/2020
12	DSC_6906	SSW	Detail view of front entryway to Former Coffs Heights Post Office showing weatherboard exterior and metal framed windows	01/09/2020
13	DSC_6930	W	View of Former Coffs Heights Post Office within existing landscape	01/09/2020

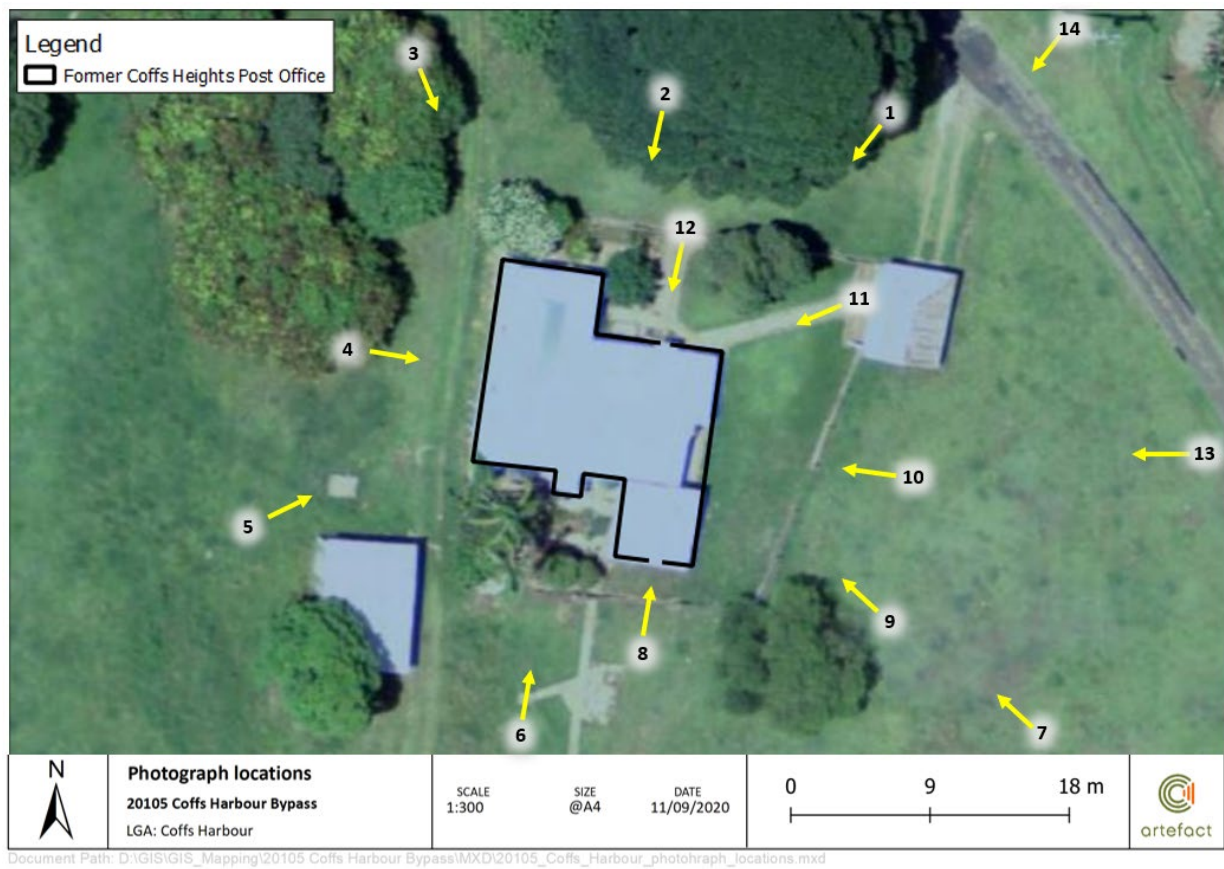
Photo #	Frame #	View to	Description	Date
14	DSC_6931	SW	View of Former Coffs Heights Post Office within existing landscape	01/09/2020
15	DSC_6838	WNW	View within original Former Coffs Heights Post Office, showing current living room from within laundry area, note the wooden panelled walling and ceiling	01/09/2020
16	DSC_6839	WNW	Detail view of original wooden panelling on walls and ceilings within original Former Coffs Heights Post Office from laundry area showing through to living room	01/09/2020
17	DSC_6840	S	View from kitchen / dining area to laundry and patio within Former Coffs Heights Post Office showing original wooden panelling on walls	01/09/2020
18	DSC_6841	ESE	View of kitchen / dining area within original Former Coffs Heights Post Office showing wooden panelling to walls and ceilings, wooden framed windows, and wooden floorboards	01/09/2020
19	DSC_6843	NNE	View of kitchen / dining area within original Former Coffs Heights Post Office showing wooden panelling to walls and ceilings and wooden floorboards	01/09/2020
20	DSC_6844	SW	Detail of joinery between ceiling and walling within kitchen / dining area of original Former Coffs Heights Post Office	01/09/2020
21	DSC_6845	SSW	View within loungeroom of original Former Coffs Heights Post Office showing wooden panelling to walls and ceilings and wooden floorboards	01/09/2020
22	DSC_6846	NNE	View within loungeroom of original Former Coffs Heights Post Office showing wooden panelling to walls and ceilings and wooden floorboards	01/09/2020
23	DSC_6848	SSW	View from within sunroom showing original wooden sash windows (now internal) leading to living room within Former Coffs Heights Post Office	01/09/2020
24	DSC_6849	WNW	View of sunroom within Former Coffs Heights Post Office, showing original weatherboard and wooden sash windows to the left (now internal)	01/09/2020
25	DSC_6850	SSW	View of original wood panel and glass front door (now internal) from sunroom of Former Coffs Heights Post Office	01/09/2020
26	DSC_6851	SSW	Detail view of door handle and lock on original front door (now internal) of Former Coffs Heights Post Office	01/09/2020

Photo #	Frame #	View to	Description	Date
27	DSC_6852	SSW	View of bedroom within original Former Coffs Heights Post Office from sunroom. Showing original weatherboard walling (now internal) and modern plyboard ceiling	01/09/2020
28	DSC_6853	ESE	View within sunroom of Former Coffs Heights Post Office showing modern metal windows and plyboard ceiling	01/09/2020
29	DSC_6854	SW	View of bedroom within original Former Coffs Heights Post Office. Showing original weatherboard walling and wooden panel doors (now internal)	01/09/2020
30	DSC_6855	SSW	View of bedroom within original Former Coffs Heights Post Office. Showing original weatherboard ceiling, walling and wooden panel doors (now internal)	01/09/2020
31	DSC_6856	SW	Detail view of wood panel walling and ceiling within bedroom of original Former Coffs Heights Post Office	01/09/2020
32	DSC_6857	NW	View within front bedroom of Former Coffs Heights Post Office showing wood panel walling and plywood ceilings	01/09/2020
33	DSC_6858	SSW	View within front bedroom of Former Coffs Heights Post Office showing wood panel walling and plywood ceilings	01/09/2020
34	DSC_6860	NNE	View within kitchen of Former Coffs Heights Post Office showing wood panel ceilings and walls	01/09/2020
35	DSC_6861	NW	View within kitchen of Former Coffs Heights Post Office showing wood panel ceilings and walls	01/09/2020
36	DSC_6862	NE	View within kitchen of Former Coffs Heights Post Office showing wood panel ceilings and walls	01/09/2020
37	DSC_6863	ESE	View within laundry of Former Coffs Heights Post Office showing wood panel walling and amenities	01/09/2020
38	DSC_6864	SSW	View within laundry of Former Coffs Heights Post Office showing wood panel walling and amenities	01/09/2020
39	DSC_6866	N	View within laundry of Former Coffs Heights Post Office showing wood panel walling and amenities	01/09/2020
40	DSC_6867	WNW	View within laundry of Former Coffs Heights Post Office showing storeroom	01/09/2020
41	DSC_6868	SW	View within storeroom of Former Coffs Heights Post Office	01/09/2020
42	DSC_6869	NE	View within storeroom of Former Coffs Heights Post Office through to laundry	01/09/2020

Photo #	Frame #	View to	Description	Date
43	DSC_6870	WNW	View along internal hallway within Former Coffs Heights Post Office. Showing original weatherboard walling (now internal)	01/09/2020
44	DSC_6871	NNE	View of original four panel glass timber sash window (now internal) within Former Coffs Heights Post Office	01/09/2020
45	DSC_6872	NW	View along internal hallway within Former Coffs Heights Post Office. Showing original weatherboard walling (now internal)	01/09/2020
46	DSC_6873	SSW	View within linen cupboard 'nook' area within Former Coffs Heights Post Office	01/09/2020
47	DSC_6874	SSW	View within bathroom of Former Coffs Heights Post Office	01/09/2020
48	DSC_6875	NNE	View within bathroom of Former Coffs Heights Post Office	01/09/2020
49	DSC_6876	NNE	Detail view of original wooden panel door (now internal) within Former Coffs Heights Post Office	01/09/2020
50	DSC_6877	NNE	Detail view of original wooden panel door (now internal) within Former Coffs Heights Post Office	01/09/2020
51	DSC_6879	SW	View of hallway within Former Coffs Heights Post Office showing door through to bedroom	01/09/2020
52	DSC_6880	NNE	View from bathroom through to bedroom in original Former Coffs Heights Post Office	01/09/2020
53	DSC_6881	NW	View within bedroom of original Former Coffs Heights Post Office showing wood panel walls	01/09/2020
54	DSC_6882	SE	View hallway of Former Coffs Heights Post Office	01/09/2020
55	DSC_6883	NNE	View within hallway of Former Coffs Heights Post Office through to original bedroom	01/09/2020
56	DSC_6884	NW	View of original bedroom within Former Coffs Heights Post office showing wood panelling	01/09/2020
57	DSC_6885	NNE	View of original bedroom within Former Coffs Heights Post office showing wood panelling	01/09/2020
58	DSC_6886	SSW	View of original bedroom within Former Coffs Heights Post Office showing wood panelling and window	01/09/2020
59	DSC_6887	NNE	View within rear bedroom of Former Coffs Heights Post Office	01/09/2020
60	DSC_6888	NE	View within rear bedroom of Former Coffs Heights Post Office	01/09/2020

Photo #	Frame #	View to	Description	Date
61	DSC_6890	WNW	View within rear bedroom of Former Coffs Heights Post Office	01/09/2020
62	DSC_6891	SW	View within rear bedroom of Former Coffs Heights Post Office	01/09/2020
63	DSC_6892	SE	Detail of wall and ceiling joinery within Former Coffs Heights Post Office bedroom	01/09/2020
64	DSC_6893	ESE	Detail of wood panel wall within Former Coffs Heights Post Office bedroom	01/09/2020
65	DSC_6894	SE	Detail of timber floorboards within Former Coffs Heights Post Office bedroom	01/09/2020
66	DSC_6895	S	Detail of door within bedroom of Former Coffs Heights Post Office	01/09/2020
67	DSC_6896	NE	View along hallway within Former Coffs Heights Post Office showing original weatherboard, timber door and windows (now internal)	01/09/2020
68	DSC_6897	NNE	View within hallway of Former Coffs Heights Post Office showing original weatherboard and timber doors (now internal)	01/09/2020
69	DSC_6898	NE	Detail of weatherboard within Former Coffs Heights Post Office hallway	01/09/2020
70	DSC_6915	W	View within lower level storage / workshop	01/09/2020
71	DSC_6916	SW	View within lower level storage / workshop show ceiling	01/09/2020
72	DSC_6917	SW	View within lower level storage / workshop show ceiling joinery	01/09/2020
73	DSC_6919	E	View within lower level storage / workshop	01/09/2020

## 5 Reference aerial



**Figure 24: Former Coffs Heights Post Office external photograph locations**



**Figure 25: Former Coffs Heights Post Office first floor interior photograph locations**



**Figure 26: Former Coffs Heights Post Office lower level interior photograph locations**

## 6 Material specifications

---

### 6.1 Camera

All photographs were taken using a Nikon D700 with a 28mm 1.8G lens.

### 6.2 Materials used

The following materials were used for the archival photographic record:

**Table 3: Material specifications**

Criterion	Significance
Folder and slipcase	Albox archival photo-safe album (acid free, adhesive free, metal free) <ul style="list-style-type: none"><li>• 25mm binder and cover photo album (non-prints folder)</li><li>• 40mm binder and cover photo album (prints folder)</li></ul>
<b>A4 sleeves</b>	Albox A4 Pocket 90 micron
<b>CD</b>	4GB CD-R
<b>CD sleeves</b>	Albox ALBOX Double CD Pocket
<b>A4 – 6x4 sleeves</b>	Albox 6x4 Photo Page (polypropylene)
<b>A6 prints</b>	Fujicolor Crystal Archive Paper – Lustre finish

## 7 References

---

Author unknown, 1892. 'Herman and Fanny Reick on their banana plantation.' *Coffs Harbour Regional Museum*. Accessed online 8 September 2020, <https://coffsharbour.spydus.com/cgi-bin/spydus.exe/FULL/WPIC/BIBENQ/6847544/439613,8>

Author unknown, c1900s. 'Slab sided creamery, Coffs Harbour'. *Coffs Harbour Regional Museum*. Accessed online 8 September 2020, <https://coffsharbour.spydus.com/cgi-bin/spydus.exe/FULL/WPIC/BIBENQ/6847315/423384,2>

Author unknown, c1915. 'Two unidentified timber cutters standing with their axes against a fallen log, Coffs Harbour'. *Coffs Harbour Regional Museum*. Accessed 8 September 2020, <https://coffsharbour.spydus.com/cgi-bin/spydus.exe/FULL/WPIC/BIBENQ/6847049/433111,8>

Biosis, July 2019. *Coffs Harbour Bypass – Non-Aboriginal Heritage Assessment*. Report to Roads and Maritime Services.

Dallas, Mary, 2008. *Aboriginal Archaeological Assessment: Sandy Beach North, NSW*.

COFF'S HEIGHTS POST OFFICE, 11 October 1915. *Daily Examiner (Grafton, NSW: 1915 - 1954)*, p. 2. Accessed 12 October 2020, <http://nla.gov.au/nla.news-article195176291>

Coffs Heights Telephone, 4 October 1919. *Coffs Harbour Advocate (NSW: 1907 - 1942; 1946 - 1954)*, p. 2. Accessed 12 October 2020, <http://nla.gov.au/nla.news-article187851614>

EARLIEST COFFS. (1924, May 10). *Coffs Harbour Advocate (NSW: 1907 - 1942; 1946 - 1954)*, p. 3. Accessed 8 September 2020, from <http://nla.gov.au/nla.news-article188552772>

Exit Coffs Heights P.O., 28 February 1923. *Coffs Harbour Advocate (NSW: 1907 - 1942; 1946 - 1954)*, p. 2. Accessed 12 October 2020, <http://nla.gov.au/nla.news-article185499374>

J.H. Howarth, 1915. 'Coffs Heights'. Accessed 12 October 2020, <https://coffs.recollect.net.au>

J.H. Howarth, 1921. 'Coffs Heights'. Accessed 12 October 2020, <https://coffs.recollect.net.au/>

KORORA BASIN ROAD, 26 January 1934. *Coffs Harbour Advocate (NSW: 1907 - 1942; 1946 - 1954)*, p. 1. Retrieved September 11, 2020, from <http://nla.gov.au/nla.news-article187765030>

Land Registry Services, 1959. 'Parish of Coff'. Accessed online 11 September 2020, <https://hlrv.nswlrs.com.au/>

NSW Government, 1997 [2016]. *Heritage Act 1977 No. 136*. Accessed 28 August 2019, <https://www.legislation.nsw.gov.au/#/view/act/1977/136>.

NSW Heritage Office, 1998. How to Prepare Archival Records of Heritage Items.

NSW Heritage Office, 2006. Photographic Recording of Heritage Items Using Film or Digital Capture.

RTA, 2006. *Bridge Types in NSW Historical Overviews*. NSW Roads and Traffic Authority, Sydney p. 20-21.

SHIRE WORKS, 20 January 1939. *Coffs Harbour Advocate (NSW: 1907 - 1942; 1946 - 1954)*, p. 3. Accessed 11 September 2020, <<http://nla.gov.au/nla.news-article187989823>>.

Thomas, L. (ed)., 2013. *Aboriginal History of the Coffs Harbour Region*. Coffs Harbour City Library, Coffs Harbour NSW.

Thomas, L, 2016. 'Aboriginal history of the Coffs Harbour region'. *Coffs Harbour City Library*. Accessed online, 8 September 2020, <https://libraries.coffsharbour.nsw.gov.au/Local-Heritage/Documents/Aboriginal%20history%20of%20the%20Coffs%20Harbour%20region.pdf>

Yeates, N. 1990. *Coffs Harbour, Volume I: Pre-1880 to 1945*. Coffs Harbour City Council, Coffs Harbour.

## 8 Appendix A: Photograph contact sheets

---

PHOTO 1 – DSC\_6837



PHOTO 2 – DSC\_6907



PHOTO 3 – DSC\_6908



PHOTO 4 – DSC\_6909



PHOTO 5 – DSC\_6910



PHOTO 6 – DSC\_6911



PHOTO 7 – DSC\_6912



PHOTO 8 – DSC\_6913



PHOTO 9 – DSC\_6902



PHOTO 10 – DSC\_6903



PHOTO 11 – DSC\_6905



PHOTO 12 – DSC\_6906



PHOTO 13 – DSC\_6930



PHOTO 14 – DSC\_6931



PHOTO 15 – DSC\_6838



PHOTO 16 – DSC\_6839



PHOTO 17 – DSC\_6840

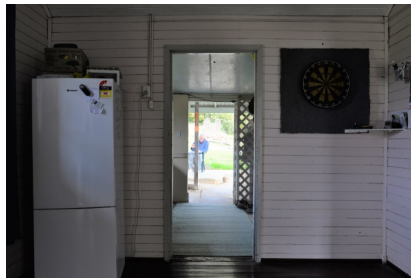


PHOTO 18 – DSC\_6841



PHOTO 19 – DSC\_6843

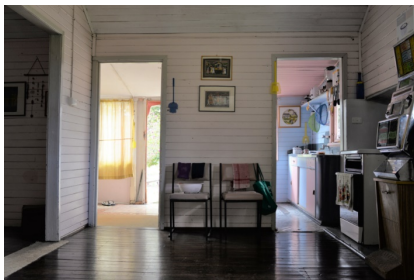


PHOTO 20 – DSC\_6844



PHOTO 21 – DSC\_6845



PHOTO 22 – DSC\_6846



PHOTO 23 – DSC\_6848



PHOTO 24 – DSC\_6849



PHOTO 25 – DSC\_6850



PHOTO 26 – DSC\_6851



PHOTO 27 – DSC\_6852



PHOTO 28 – DSC\_6853



PHOTO 29 – DSC\_6854



PHOTO 30 – DSC\_6855



PHOTO 31 – DSC\_6856



PHOTO 32 – DSC\_6857



PHOTO 33 – DSC\_6858



PHOTO 34 – DSC\_6860



PHOTO 35 – DSC\_6861



PHOTO 36 – DSC\_6862



PHOTO 37 – DSC\_6863



PHOTO 38 – DSC\_6864



PHOTO 39 – DSC\_6866



PHOTO 40 – DSC\_6867



PHOTO 41 – DSC\_6868



PHOTO 42 – DSC\_6869



PHOTO 43 – DSC\_6870

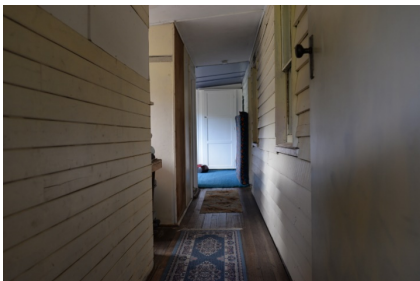


PHOTO 44 – DSC\_6871



PHOTO 45 – DSC\_6872



PHOTO 46 – DSC\_6873



PHOTO 47 – DSC\_6874



PHOTO 48 – DSC\_6875



PHOTO 49 – DSC\_6876



PHOTO 50 – DSC\_6877

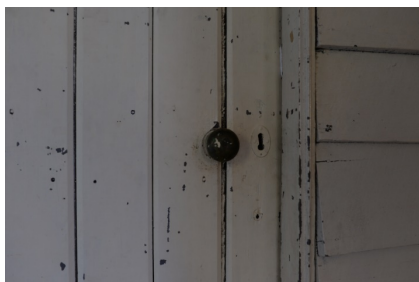


PHOTO 51 – DSC\_6879



PHOTO 52 – DSC\_6880



PHOTO 53 – DSC\_6881



PHOTO 54 – DSC\_6882



PHOTO 55 – DSC\_6883



PHOTO 56 – DSC\_6884

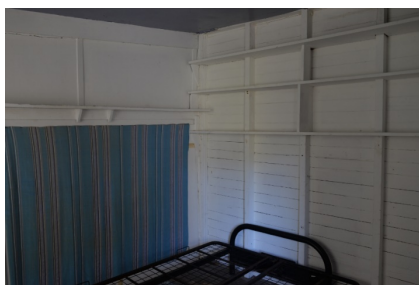


PHOTO 57 – DSC\_6885

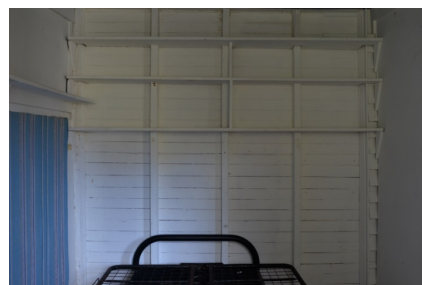


PHOTO 58 – DSC\_6886



PHOTO 59 – DSC\_6887

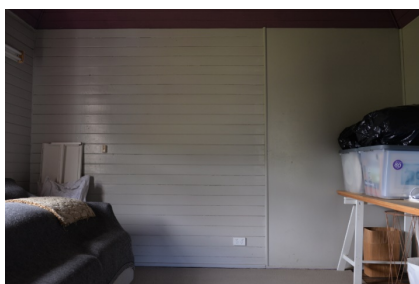


PHOTO 60 – DSC\_6888

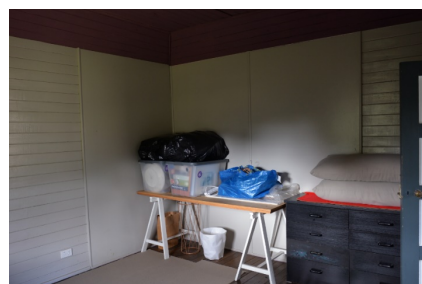


PHOTO 61 – DSC\_6890



PHOTO 62 – DSC\_6891



PHOTO 63 – DSC\_6892



PHOTO 64 – DSC\_6893



PHOTO 65 – DSC\_6894



PHOTO 66 – DSC\_6895



PHOTO 67 – DSC\_6896



PHOTO 68 – DSC\_6897



PHOTO 69 – DSC\_6898



PHOTO 70 – DSC\_6896



PHOTO 71 – DSC\_6897



PHOTO 72 – DSC\_6898



PHOTO 73 – DSC\_6898

