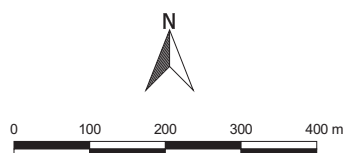


2 LINCOLN STREET
LANE COVE
NSW 2066
AUSTRALIA
T: +61 2 9427 8100
www.slrconsulting.com

The content contained within this document may be based on third party data.
SLR Consulting Australia Pty Ltd does not guarantee the accuracy of such information.

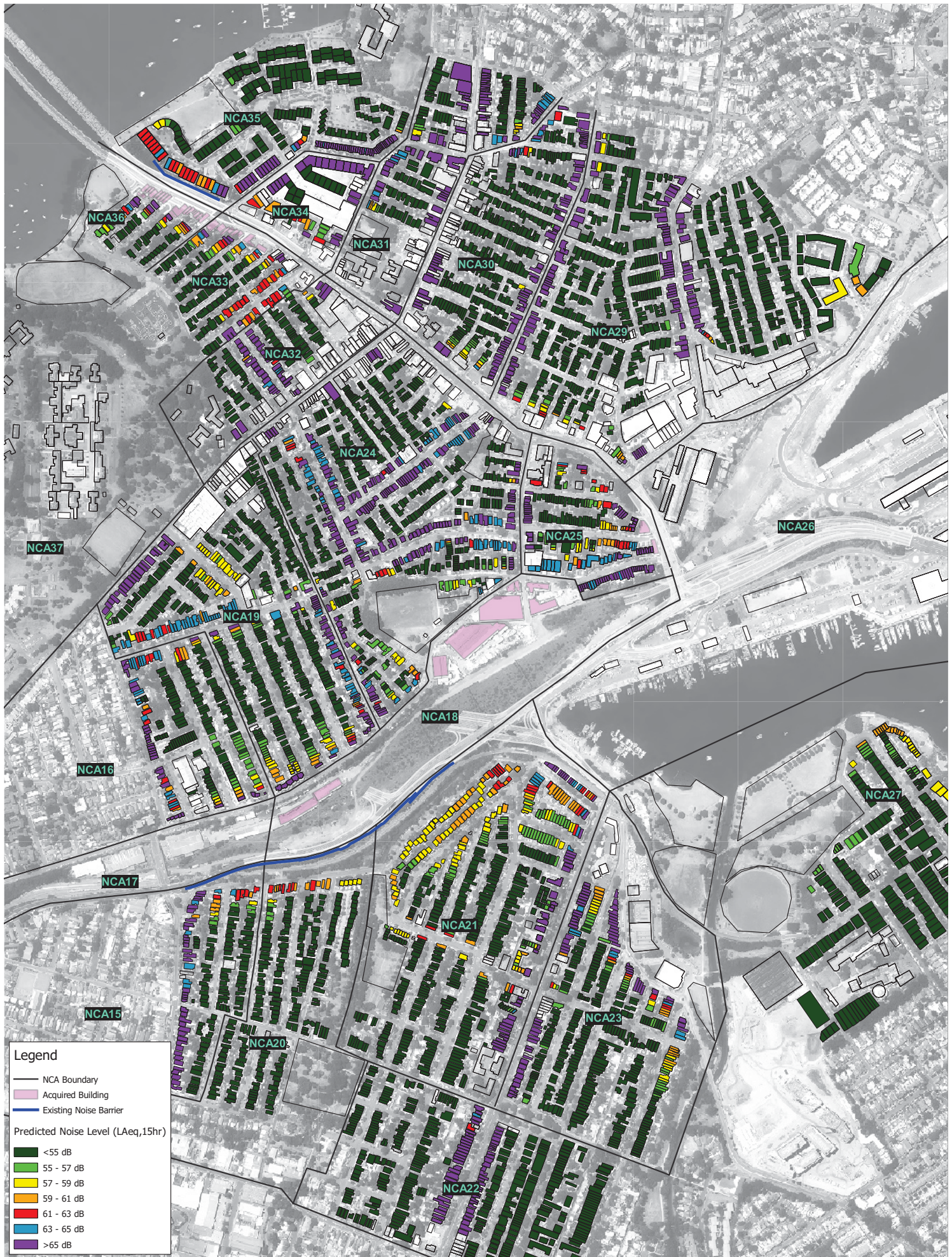
Project No.: 610.16185
Date: 16/05/2017
Drawn by: ALW
Scale: 1:10,000
Sheet Size: @ A4
Projection: GDA 1994 MGA Zone 56



Sydney Motorway Corporation

WestConnex M4-M5 Link

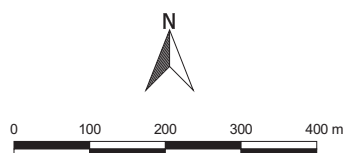
**Residential Noise Predictions
Ground Floor, 2023 - Daytime
Build (Without Mitigation)**



2 LINCOLN STREET
LANE COVE
NSW 2066
AUSTRALIA
T: +61 2 9427 8100
www.slrconsulting.com

The content contained within this document may be based on third party data.
SLR Consulting Australia Pty Ltd does not guarantee the accuracy of such information.

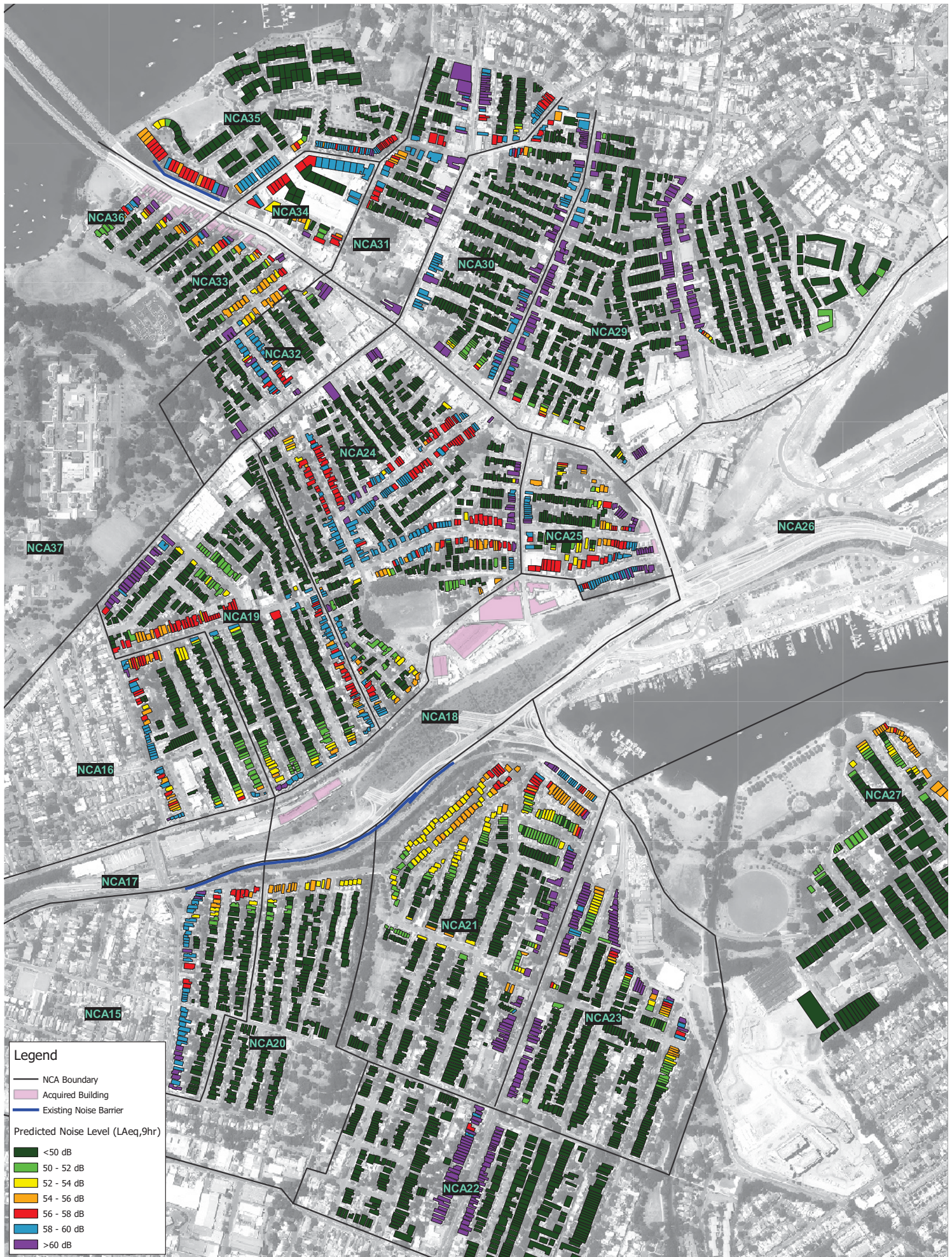
Project No.: 610.16185
Date: 16/05/2017
Drawn by: ALW
Scale: 1:10,000
Sheet Size: @ A4
Projection: GDA 1994 MGA Zone 56



Sydney Motorway Corporation

WestConnex M4-M5 Link

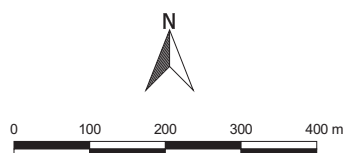
**Residential Noise Predictions
Ground Floor, 2033 - Daytime
Build (Without Mitigation)**



2 LINCOLN STREET
LANE COVE
NSW 2066
AUSTRALIA
T: +61 2 9427 8100
www.slrconsulting.com

The content contained within this document may be based on third party data.
SLR Consulting Australia Pty Ltd does not guarantee the accuracy of such information.

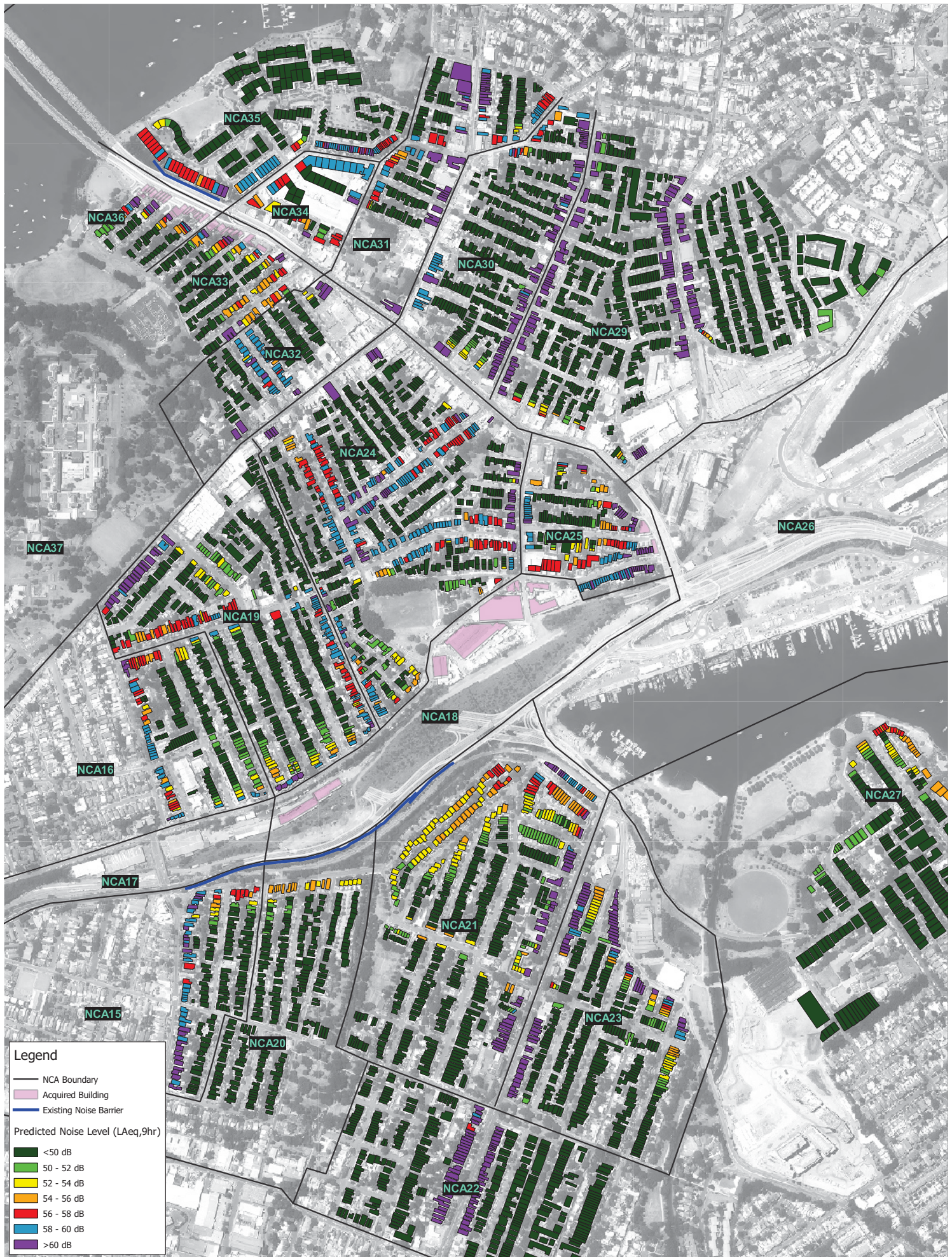
Project No.: 610.16185
Date: 16/05/2017
Drawn by: ALW
Scale: 1:10,000
Sheet Size: @ A4
Projection: GDA 1994 MGA Zone 56



Sydney Motorway Corporation

WestConnex M4-M5 Link

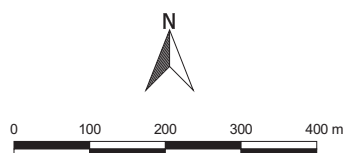
**Residential Noise Predictions
Ground Floor, 2023 - Night-time
Build (Without Mitigation)**



2 LINCOLN STREET
LANE COVE
NSW 2066
AUSTRALIA
T: +61 2 9427 8100
www.slrconsulting.com

The content contained within this document may be based on third party data. SLR Consulting Australia Pty Ltd does not guarantee the accuracy of such information.

Project No.: 610.16185
Date: 16/05/2017
Drawn by: ALW
Scale: 1:10,000
Sheet Size: @ A4
Projection: GDA 1994 MGA Zone 56



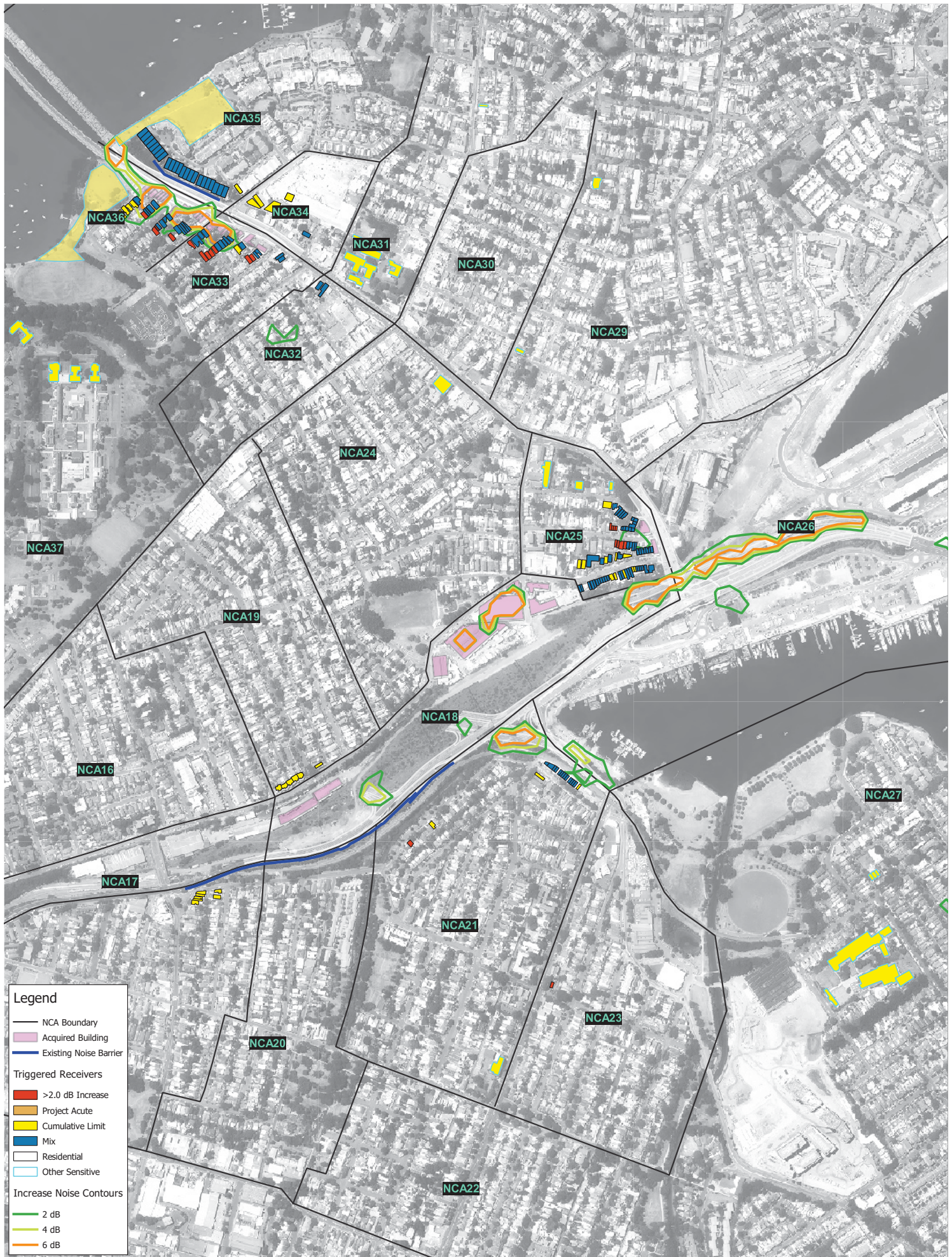
Sydney Motorway Corporation

WestConnex M4-M5 Link

**Residential Noise Predictions
Ground Floor, 2033 - Night-time
Build (Without Mitigation)**

Annexure M

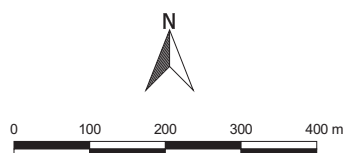
Operational NMG additional mitigation locations



2 LINCOLN STREET
LANE COVE
NSW 2066
AUSTRALIA
T: +61 2 9427 8100
www.slrconsulting.com

The content contained within this document may be based on third party data. SLR Consulting Australia Pty Ltd does not guarantee the accuracy of such information.

Project No.:	610.16185
Date:	16/05/2017
Drawn by:	ALW
Scale:	1:10,000
Sheet Size:	@ A4
Projection:	GDA 1994 MGA Zone 56



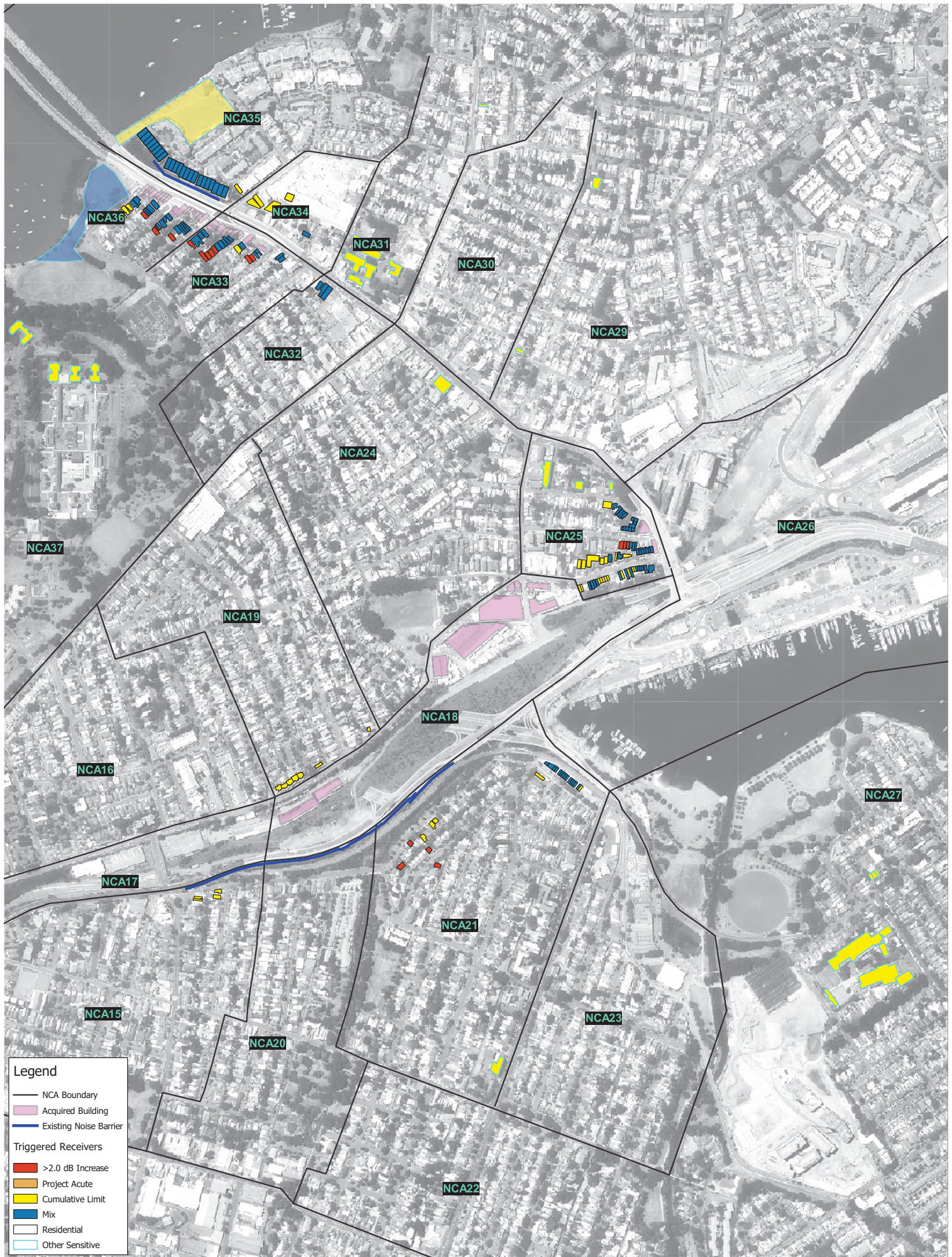
Sydney Motorway Corporation

WestConnex M4-M5 Link

**Receivers Considered for
Additional Noise Mitigation
Build (Without Mitigation)**

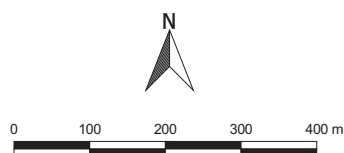
Annexure N

Cumulative operational noise assessment



2 LINCOLN STREET
LANE COVE
NSW 2066
AUSTRALIA
T: +61 2 9427 8100
www.slrconsulting.com

Project No.: 610.16185
Date: 16/05/2017
Drawn by: ALW
Scale: 1:10,000
Sheet Size: @ A4
Projection: GDA 1994 MGA Zone 56



Sydney Motorway Corporation

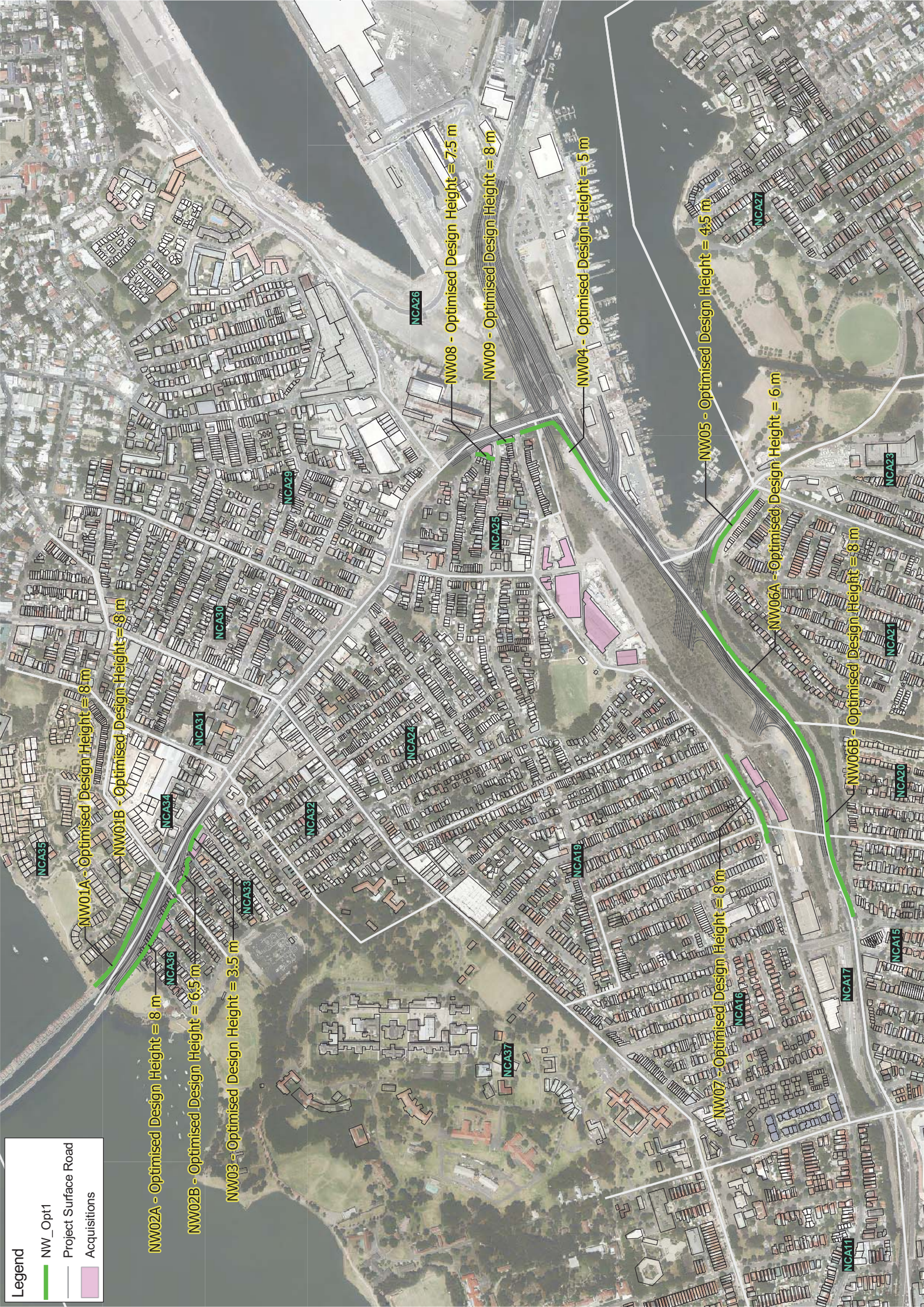
WestConnex M4-M5 Link

**Cumulative Noise Assessment
Do Something Plus
Build (Without Mitigation)**

The content contained within this document may be based on third party data. SLR Consulting Australia Pty Ltd does not guarantee the accuracy of such information.

Annexure O-1

Noise barrier optimisation analysis – Option 1



Legend

NW_Opt1

Project Surface Road

Acquisitions

NW01A - Optimised Design Height = 8 m

NW01B - Optimised Design Height = 8 m

NW02A - Optimised Design Height = 8 m

NW02B - Optimised Design Height = 6.5 m

NW03 - Optimised Design Height = 3.5 m

NW08 - Optimised Design Height = 7.5 m

NW09 - Optimised Design Height = 8 m

NW04 - Optimised Design Height = 5 m

NW05 - Optimised Design Height = 4.5 m

NW06A - Optimised Design Height = 6 m

NW06B - Optimised Design Height = 8 m

NW07 - Optimised Design Height = 8 m

NCA26

NCA29

NCA30

NCA31

NCA34

NCA33

NCA32

NCA24

NCA25

NCA19

NCA16

NCA15

NCA17

NCA20

NCA21

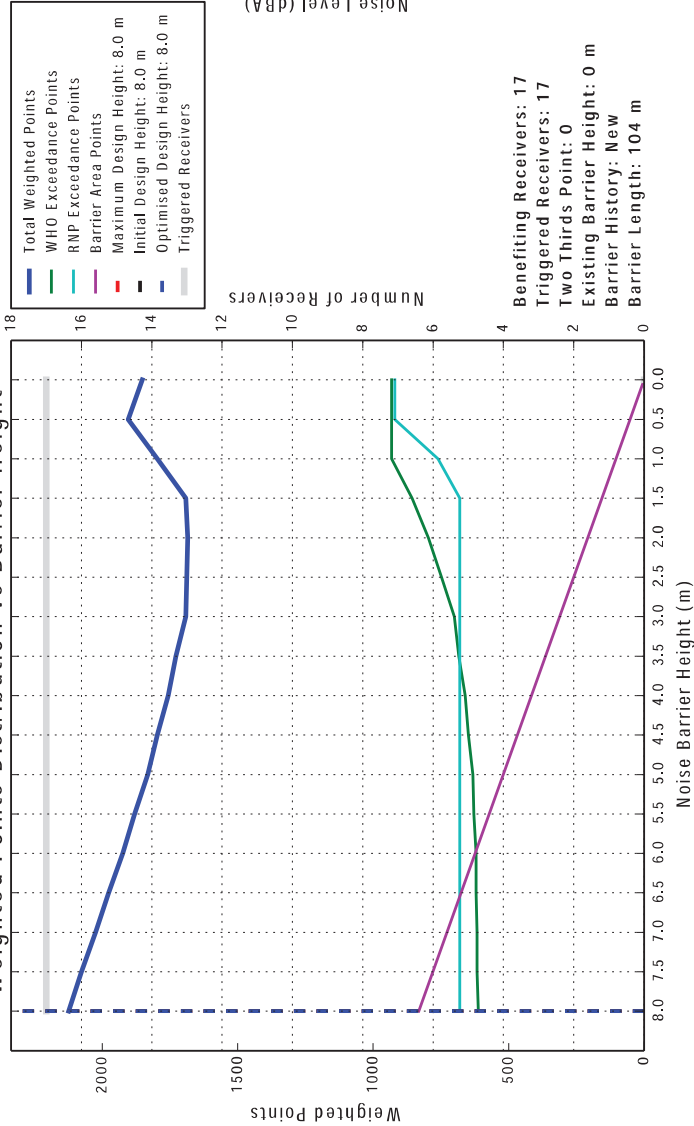
NCA23

NCA27

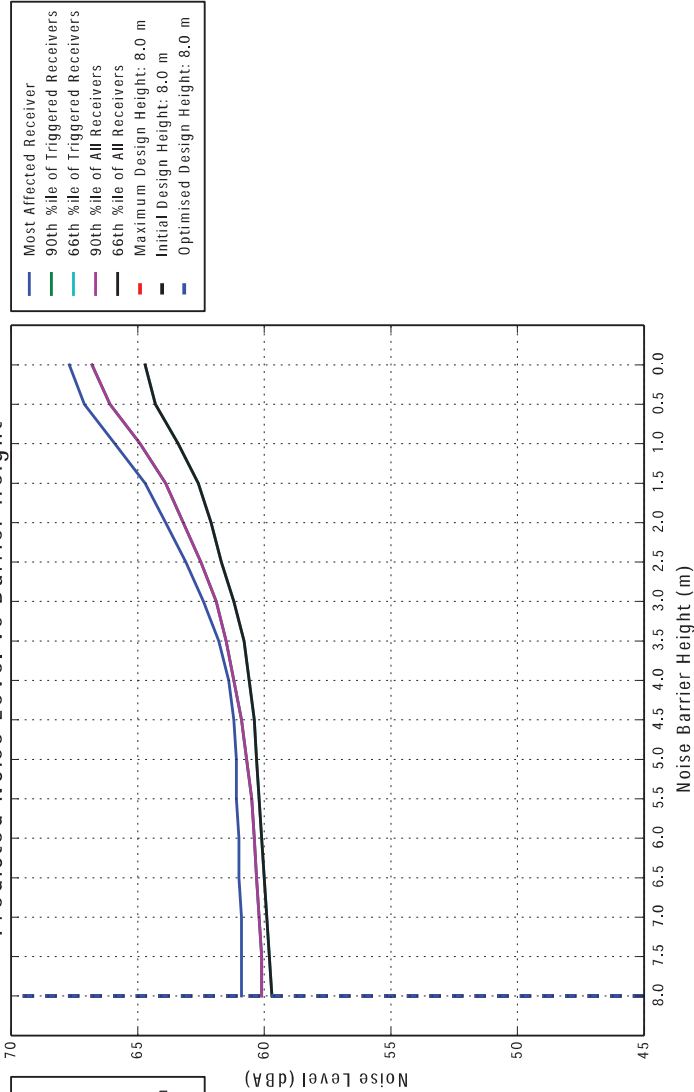
NCA11

Noise Barrier Optimisation: NWO1A

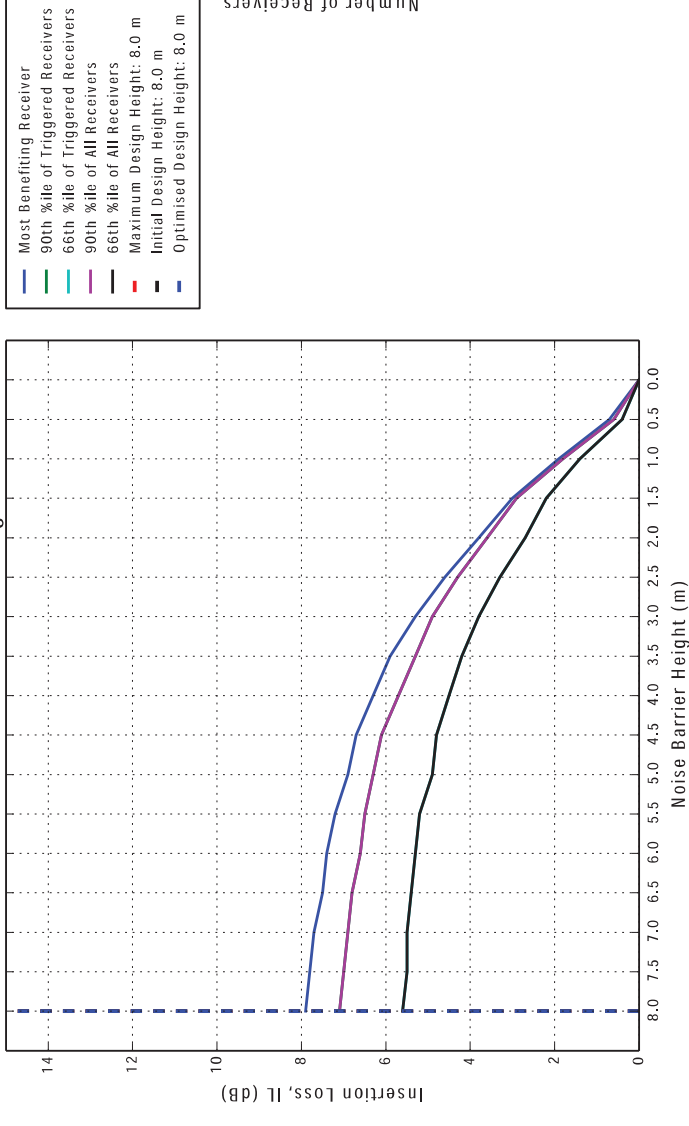
Weighted Points Distribution vs Barrier Height



Predicted Noise Level vs Barrier Height



Insertion Loss vs Barrier Height



Insertion Loss of Benefiting Receivers vs Barrier Height

