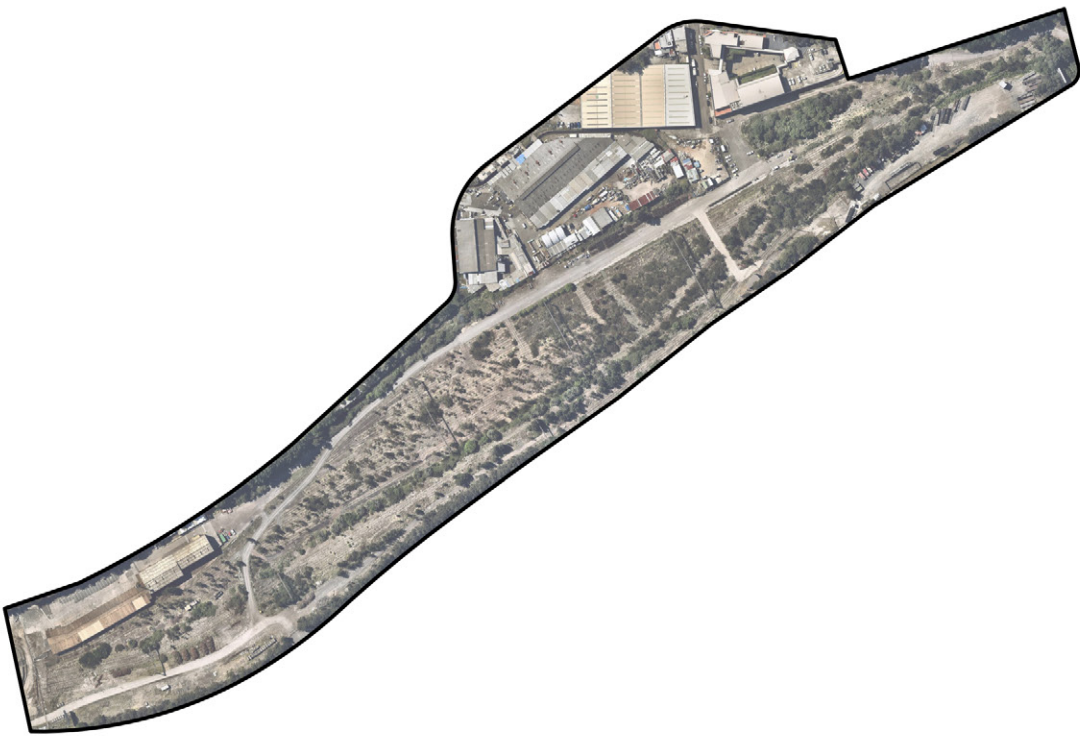


5.1.6 SPATIAL COMPARISON

The proposed Rozelle Rail Yards is a significant addition to Sydney’s matrix of publically accessible open space. The size of the site is difficult to appreciate. To comprehend the scale of the site, a comparison with other well-known parks is shown in Figure 5.11 below.



Rozelle Rail Yards - 13 hectares



Bicentennial and Federal Park [Glebe] - 5 hectares
Jubilee Park [Glebe] - 10 hectares



Hyde Park - 16 hectares

Figure 5.11: Public open space comparison

Figure 5.12: Artist's impression of waterside walk heading east



Figure 5.13: Artist's impression of bird's eye view of Rozelle Rail Yards



Ventilation facilities subject to detailed design as part of the UDLP

Subject to detailed design as part of UDLP

Figure 5.14: Render at 10 years of project operation from Catherine Street at the entry to Lilyfield light rail stop
[Inset: existing view]



Figure 5.15: Render at 10 years of project operation of view looking west along City West Link [Inset: existing view]



Figure 5.16: Render at 10 years of project operation of view looking west from City West Link west of The Crescent
[Inset: existing view]



Figure 5.17: Render at 10 years of project operation
looking south from Easton Park to the Rozelle Rail Yards
[Insert: existing view]



Ventilation facilities subject to detailed design as part of the UDLP

Figure 5.18: Render at 10 years of project operation of view looking west from The Crescent east of City West Link [Inset: existing view]

