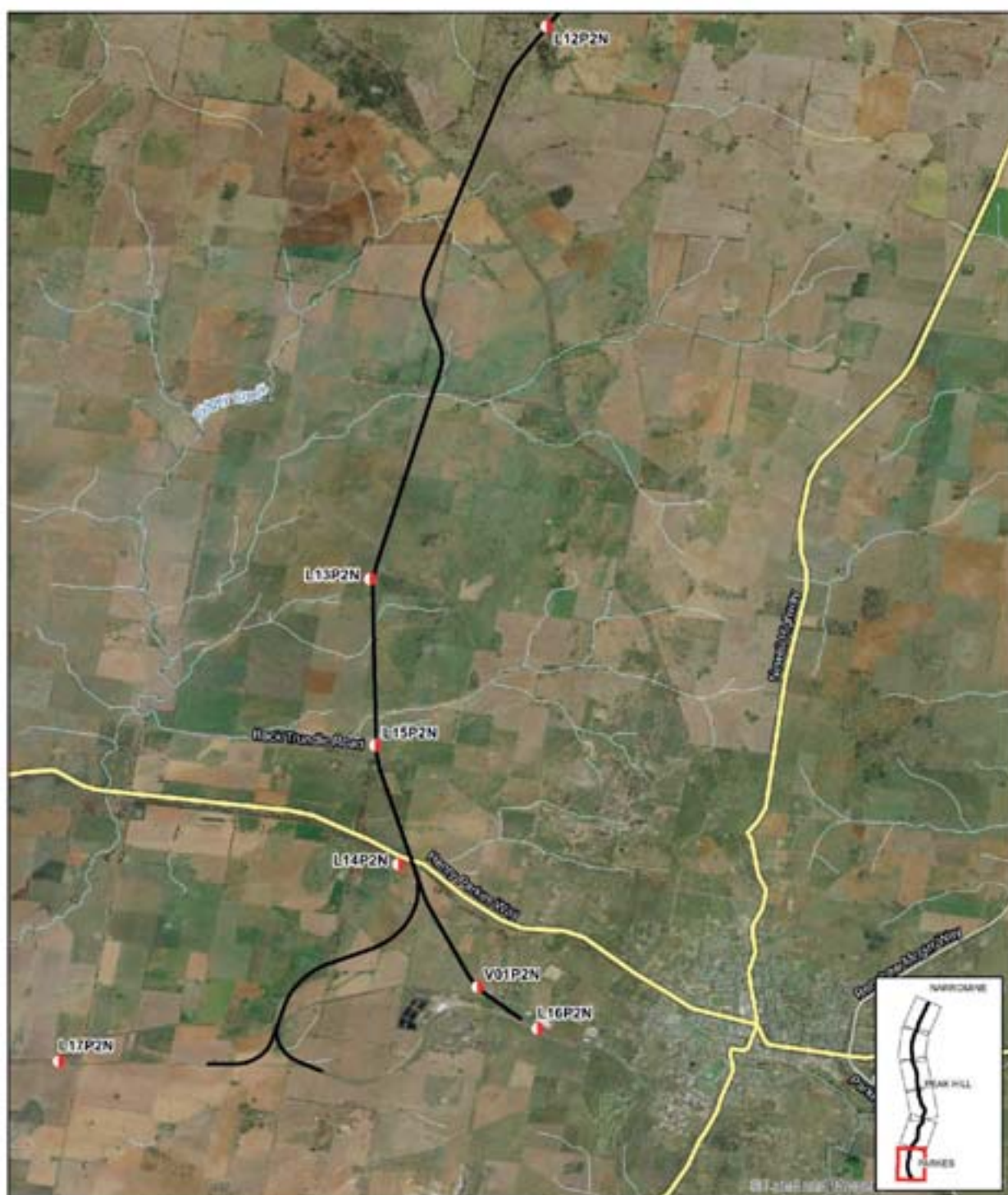


Appendix B – Monitoring locations



LEGEND
 ● Logger
 — The proposal
 — Watercourse

Paper Size A4
 0 343 690 1,350 2,070 2,790
 Metres
 Horizontal Datum: GDA 1984
 Grid: GCS GDA 1984

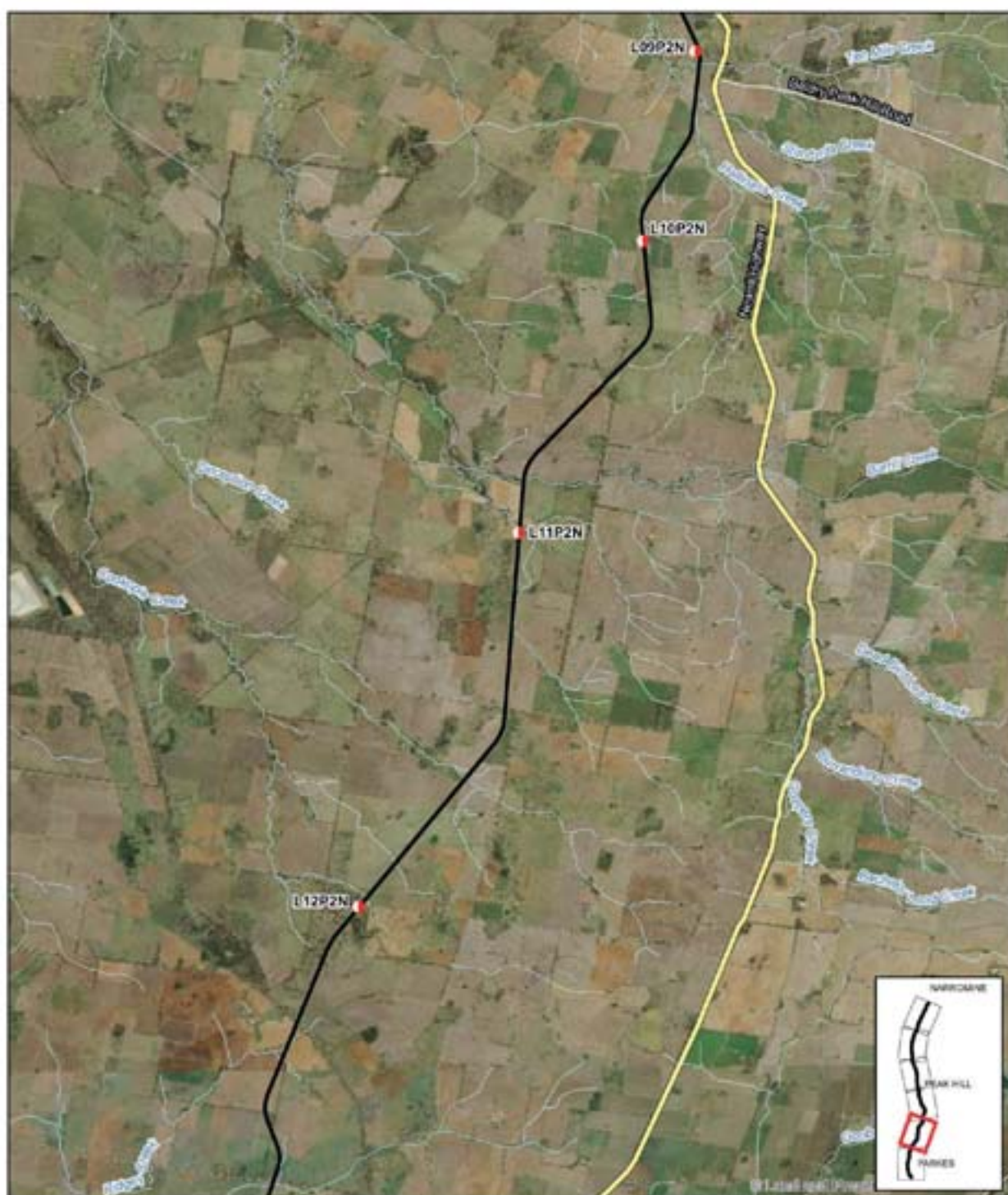


Australian Rail Track Corporation
 Inland Rail - Parkes to Narrandine

Job Number 22-17016
 Revision 0
 Date 01 Dec 2016

Logger locations **Figure B1- Sheet 1**

© 2016 GHD. All rights reserved. GHD, ARTC and LPT make no representations or warranties about the accuracy, reliability, completeness or suitability for any particular purpose and cannot accept liability for any loss (whether in contract, tort or otherwise) for any expenses, losses, damages or other costs (including interest on consequential damages) which are or may be incurred by any party as a result of the map being inaccurate, incomplete or unreliable in any way and for any reason.
 Data source: LPT, DCOR, 2015; ARTC, Imagery, 2015. Created by: Spectra



LEGEND
 ● Logger
 — The proposal
 — Watercourse

Paper Size A4
 0 400 800 1,600 2,750 3,600
 Metres
 Horizontal Datum: GDA 1984
 Grid: GCS GDA 1984



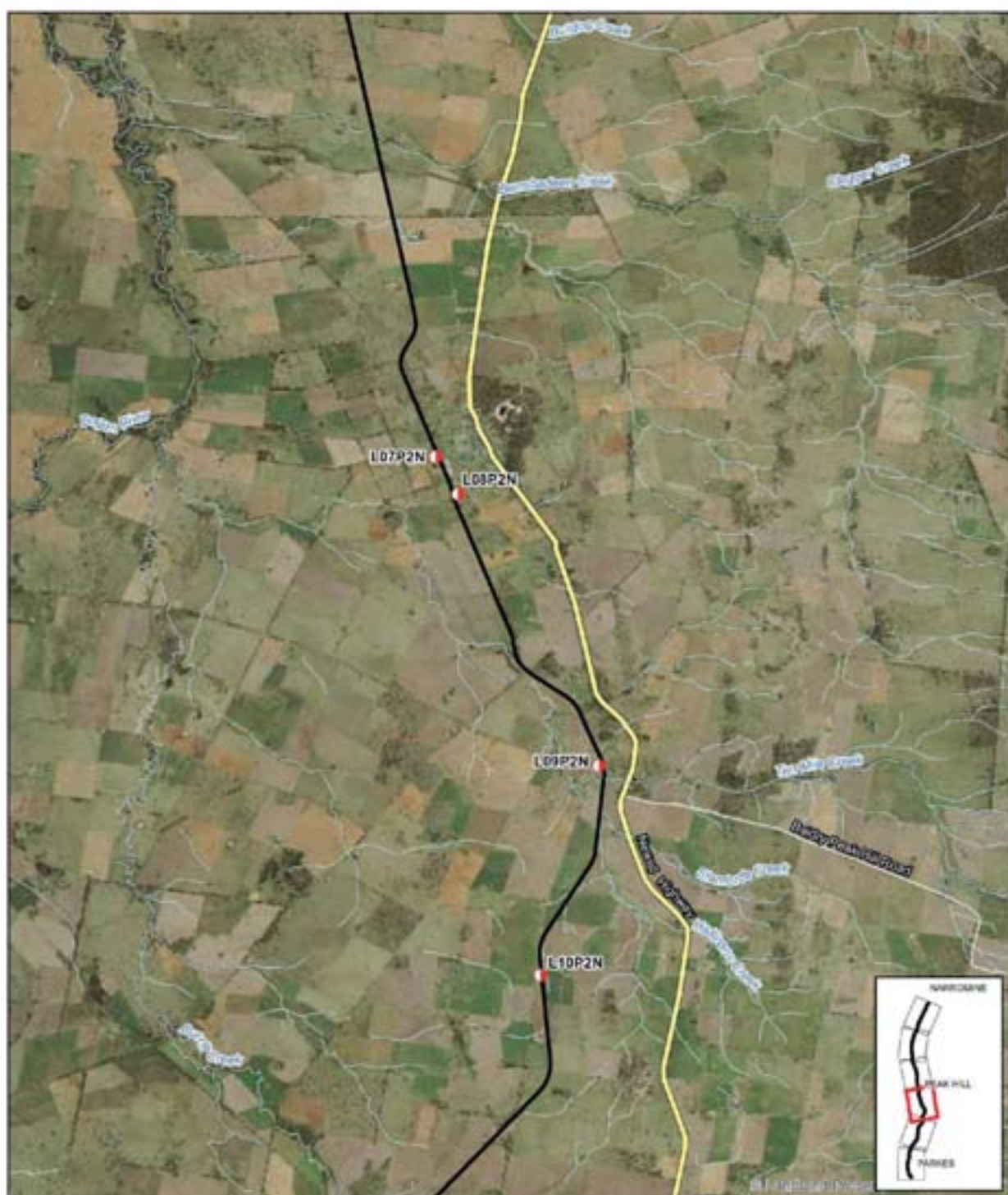
Australian Rail Track Corporation
 Inland Rail - Parkes to Narrandera

Job Number: 22-17016
 Revision: 0
 Date: 01 Dec 2016

Logger locations

Figure B1- Sheet 2

© 2016 GHD. All rights reserved. GHD, ARTC and LPT make no representations or warranties about the accuracy, reliability, completeness or suitability for any particular purpose and cannot accept liability for any loss or damage, whether in contract, tort or otherwise, for any expenses, losses, damages or other costs (including interest or consequential damages) which are or may be incurred by any party as a result of the map being inaccurate, incomplete or unreliable in any way and for any reason.
 Data source: LPT, DCOR, 2015; ARTC, Imagery, 2015. Created by: Apurba



LEGEND
 ● Logger
 — The proposal
 — Watercourse

Paper Size A4
 0 412.9025 1.650 3.475 5.200
 Metres
 Horizontal Datum: GDA 1984
 Grid: GCS GDA 1984



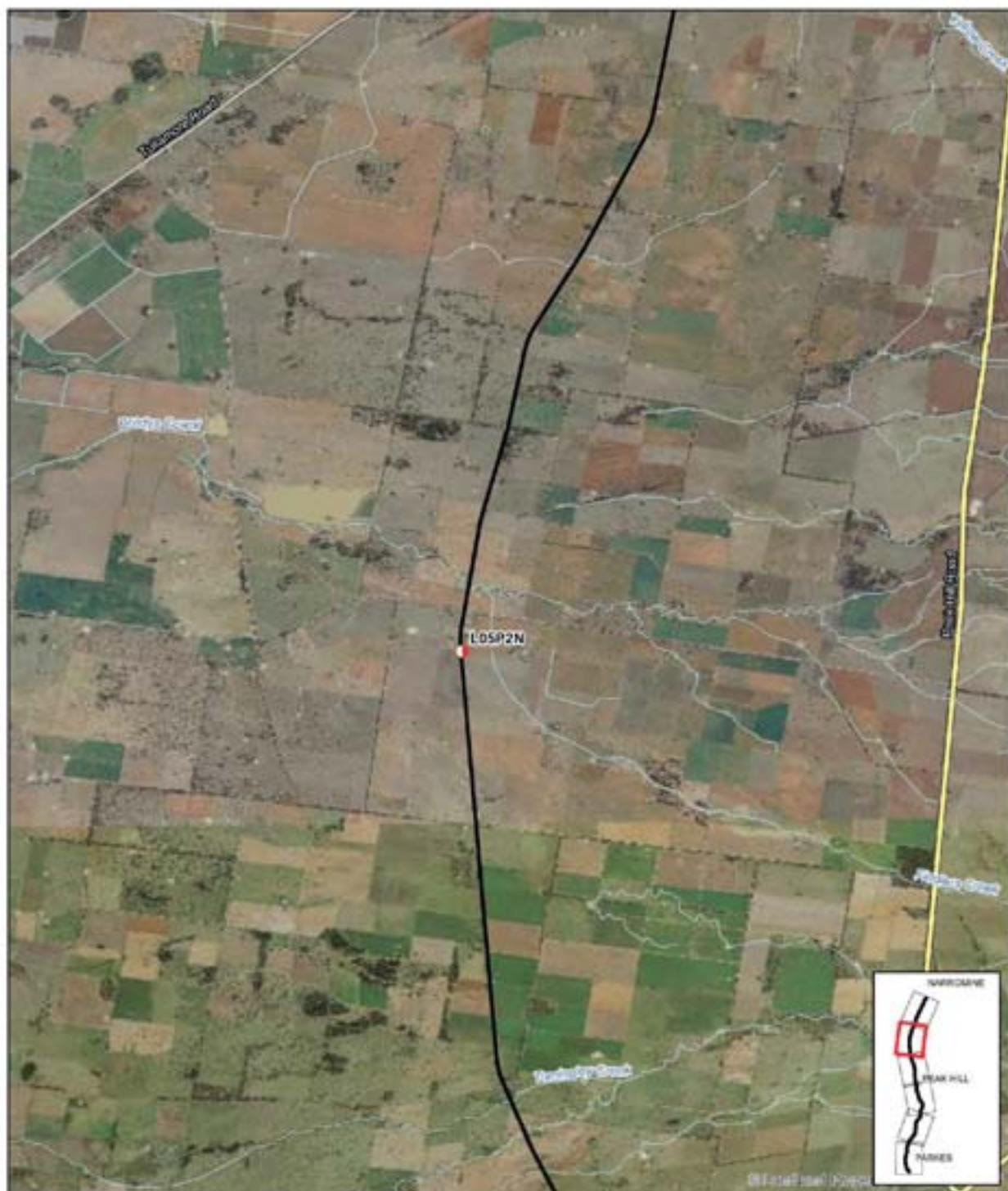
Australian Rail Track Corporation
 Inland Rail - Parkes to Narrandera

Job Number 22-17016
 Revision 0
 Date 01 Dec 2016

Logger locations

Figure B1- Sheet 3

© 2016. Where every care has been taken to prepare this map, GHD, ARTC and LPI make no representations or warranties about its accuracy, reliability, completeness or suitability for any particular purpose and cannot accept liability for any loss (whether in contract, tort or otherwise) for any expenses, losses, damages and/or costs (including interest) or consequential damages which are or may be incurred by any party as a result of the map being inaccurate, incomplete or unsuitable in any way and for any reason.
 Data source: LPI, DCOR, 2010; ARTC, Imagery, 2015. Created by: Jperkins



LEGEND
 ● Logger
 — The proposal
 — Watercourse

Paper Size A4
 0 267.975 1,030 2,325 3,190
 Metres
 Horizontal Datum: GDA 1984
 Grid: GCS GDA 1984



Australian Rail Track Corporation
 Inland Rail - Parkes to Narrandine

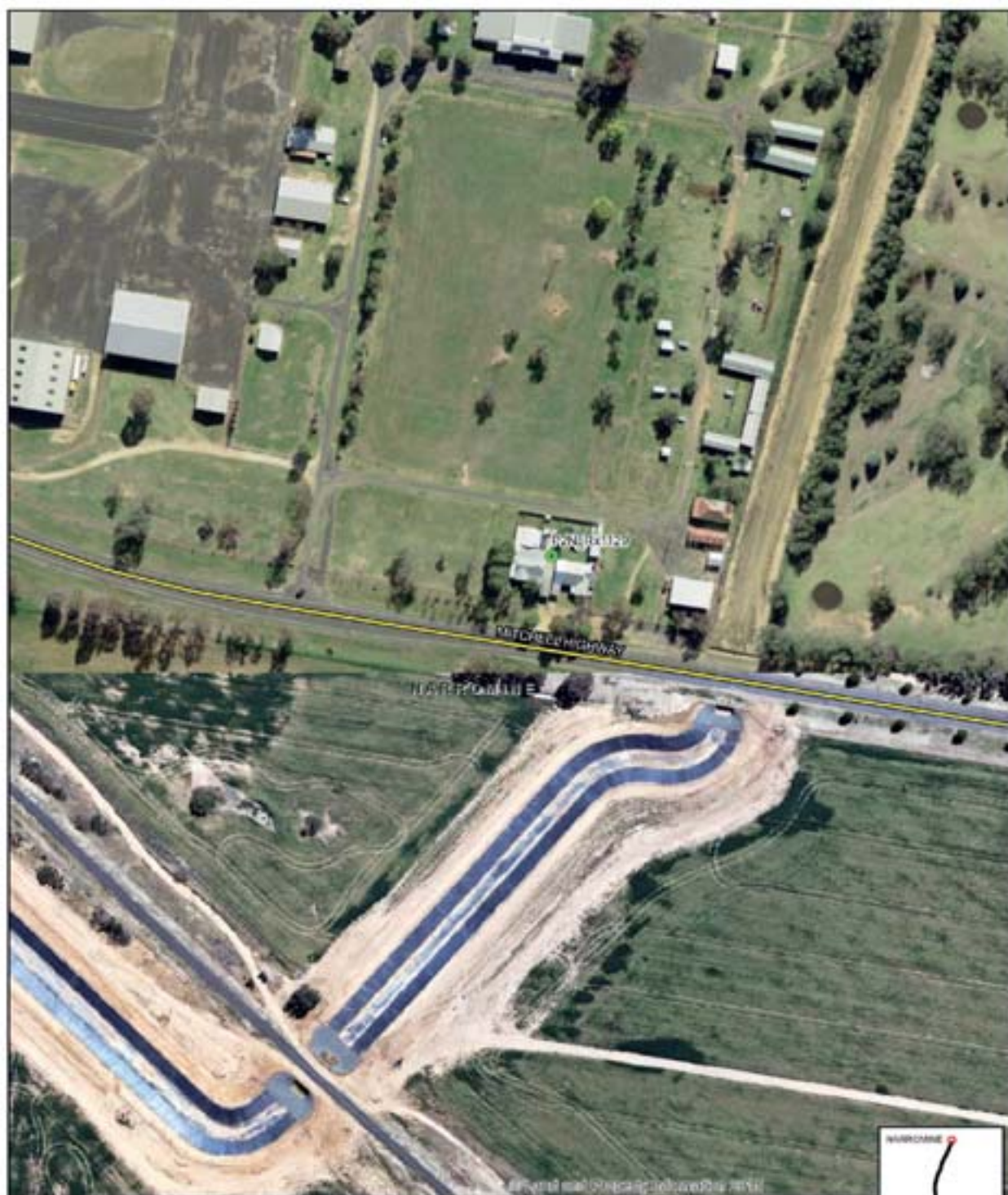
Job Number 22-17016
 Revision 0
 Date 01 Dec 2016

Logger locations

Figure B1- Sheet 5

© 2016 GHD. All rights reserved. GHD, ARTC and LPT make no representations or warranties about the accuracy, reliability, completeness or suitability for any particular purpose and cannot accept liability for any loss (whether in contract, tort or otherwise) for any expenses, losses, damages and/or costs (including interest) or consequential damages which are or may be incurred by any party as a result of the map being inaccurate, incomplete or unreliable in any way and for any reason.
 Data source: LPT, DCOR, 2015; ARTC, Imagery, 2015. Created by: Jperkins

Appendix C – Study area and noise sensitive receivers



LEGEND

- Residential receiver
- Primary road
- Watercourse



Paper Size A4
0 5 10 20 30 40
Metres
Map Projection: Transverse Mercator
Horizontal Datum: GDA 1994
Grid: GDA 1994 MGA Zone 56



Australian Rail Track Corporation
Inland Rail - Parkes to Narramine

Job Number 22-17916
Revision 0
Date 19 Jun 2017

Sensitive receiver locations **Figure C2- Sheet 1**

© 2017. While every care has been taken to prepare this map, GHD and LPI make no representations or warranties about its accuracy, reliability, completeness or suitability for any particular purpose and can not accept liability or responsibility of any kind whether in contract, tort or otherwise for any expenses, losses, damages and/or costs (including indirect or consequential damages) which may or may be incurred by any party as a result of the map being inaccurate, incomplete or available in any way and for any reason.
Data source: LPI DTDR 2013, LPI Imagery 2012. Created by: Invision, Breakday, Apertis



LEGEND

- Residential receiver
- Primary road
- Watercourse

Paper Size A4
 0 10 20 30 40
 Meters
 Map Projection: Transverse Mercator
 Australian Datum: GDA 1994
 Grid: GDA 1994 MGA Zone 56



Australian Rail Track Corporation
 Inland Rail - Parkes to Narrandera

Job Number: 22-17916
 Revision: 0
 Date: 19 Jun 2017

Sensitive receiver locations **Figure C2- Sheet 3**

© 2017. While every care has been taken to prepare this map, GHD and LPI make no representations or warranties about the accuracy, reliability, completeness or suitability for any particular purpose and can accept no liability or responsibility of any kind, whether in contract, tort or otherwise, for any omissions, errors, damages and/or costs (including indirect or consequential damages) which may or may be incurred by any party as a result of the map being inaccurate, incomplete or available in any way and for any reason.
 Data source: LPI DTDR 2013, LPI Imagery 2012. Created by: Invision, Breakday, Agribase



LEGEND

- Religious
- Residential receiver
- Arterial road
- Sub arterial road
- Watercourse

Paper Size A4
0 10 20 30 40
Meters
Map Projection: Transverse Mercator
Horizontal Datum: GDA 1994
Grid: GDA 1994 MGA Zone 56



Australian Rail Track Corporation
Inland Rail - Parkes to Narre Narine

Job Number: 22-17916
Revision: 0
Date: 19 Jun 2017

Sensitive receiver locations

Figure C2- Sheet 7

© 2017. While every care has been taken to prepare this map, GHD and LPI make no representations or warranties about its accuracy, reliability, completeness or suitability for any particular purpose and can accept no liability or responsibility of any kind, whether in contract, tort or otherwise, for any expenses, losses, damages and/or costs (including indirect or consequential damages) which are or may be incurred by any party as a result of the map being inaccurate, incomplete or otherwise in any way used for any reason.

Data source: LPI CTDR 2013, LPI Imagery 2012. Created by: Invision, Breakday, Agents



LEGEND

- Residential receiver
Watercourse



Australian Rail Track Corporation
Inland Rail - Parkes to Narrm mine

Job Number	22-17916
Revision	0
Date	19 Jun 2017

Sensitive receiver locations Figure C2- Sheet 11

03/27/17-000184qDefendation2017/03/27/201711001_NKQ_P2M_SerialsResources_3.indd 1 Level 3, 2400 Tunes, 24 Promenade Drive, Newmarket, NY 10959 T: 815 769 1000 F: 815 761 0001 E: info@glb.com W: www.glb.com



LEGEND

- Active recreation
- Health
- Residential receiver
- Arterial road
- Watercourse

Paper Size A4
0 5 10 20 30 40
Metres
Map Projection: Transverse Mercator
Horizontal Datum: GDA 1994
Grid: GDA 1994 MGA Zone 58



Australian Rail Track Corporation
Inland Rail - Parkes to Narromine

Job Number: 22-17916
Revision: 0
Date: 19 Jun 2017

Sensitive receiver locations Figure C2- Sheet 12

© 2017. While every care has been taken to prepare this map, GHD and LPI make no representations or warranties about its accuracy, reliability, completeness or suitability for any particular purpose and can not accept liability or responsibility for any loss or damage, whether in contract, tort or otherwise, for any expenses, costs, damages and/or costs, including indirect or consequential damages which may or may be incurred by any party as a result of the map being inaccurate, incomplete or available in any way and for any reason.
Data source: LPI DTDR 2013, LPI Imagery 2012. Created by: Invision, Rockley, Agents



LEGEND

- | | | |
|-------------------|----------------------|-------------------|
| Active recreation | Residential receiver | Sub arterial road |
| Health | The proposal | Watercourse |
| Religious | Arterial road | |

Paper Size A4
 0 75 150 300 450 600
 Metres
 Map Projection: Transverse Mercator
 Horizontal Datum: GDA 1994
 Grid: GDA 1994 MGA Zone 56



Australian Rail Track Corporation
 Inland Rail - Parkes to Narromine

Job Number: 22-17916
 Revision: 0
 Date: 19 Jun 2017

Sensitive receiver locations Figure C2- Sheet 13

© 2017. While every care has been taken to prepare this map, GHD and LPI make no representations or warranties as to the accuracy, reliability, completeness or suitability for any particular purpose and can not accept liability or responsibility of any kind (whether in contract, tort or otherwise) for any expenses, losses, damages and/or costs (including related or consequential damages) which may or may be incurred by any party as a result of this map being inaccurate, incomplete or available in any way and for any reason.
 Data source: LPI DTDR 2013, LPI Imagery 2012. Created by: Invision, Breakday, Agency



LEGEND

- Active recreation
- Health
- Religious
- Residential receiver
- Arterial road
- Sub arterial road
- Watercourse

Paper Size A4
 0 75 150 300 450 600
 Metres
 Map Projection: Transverse Mercator
 Horizontal Datum: GDA 1994
 Grid: GDA 1994 MGA Zone 56



Australian Rail Track Corporation
 Inland Rail - Parkes to Narromine

Job Number: 22-17916
 Revision: 0
 Date: 19 Jun 2017

Sensitive receiver locations Figure C2- Sheet 14

© 2017. While every care has been taken to prepare this map, GHD and LPI make no representations or warranties about its accuracy, reliability, completeness or suitability for any particular purpose and can accept no liability or responsibility of any kind (whether in contract, tort or otherwise) for any expenses, losses, damages and/or costs (including indirect or consequential damages) which may or may be incurred by any party as a result of the map being inaccurate, incomplete or available in any way and for any reason.
 Data source: LPI DTDR 2012, LPI Imagery 2012. Created by: Invision, Brookday, Agents



LEGEND

- Residential receiver
- The proposal
- Arterial road
- Sub arterial road
- Watercourse



Paper Size A4
 0 75 150 300 450 600
 Metres
 Map Projection: Transverse Mercator
 Horizontal Datum: GDA 1994
 Grid: GDA 1994 MGA Zone 56



Australian Rail Track Corporation
 Inland Rail - Parkes to Narromine

Job Number: 22-17916
 Revision: 0
 Date: 19 Jun 2017

Sensitive receiver locations Figure C2- Sheet 16

© 2017. While every care has been taken to prepare this map, GHD and LPI make no representations or warranties about its accuracy, reliability, completeness or suitability for any particular purpose and cannot accept liability or responsibility of any kind (whether in contract, tort or otherwise) for any expenses, losses, damages and/or costs (including indirect or consequential damages) which may or may be incurred by any party as a result of the map being inaccurate, incomplete or available in any way and for any reason.
 Data source: LPI DTDR 2013, LPI Imagery 2012. Created by: Invision, Brookday, Agribase



LEGEND

- Residential receiver
- Watercourse
- The proposal
- Sub arterial road



Paper Size A4
 0 75 150 300 450 600
 Metres
 Map Projection: Transverse Mercator
 Horizontal Datum: GDA 1994
 Grid: GDA 1994 MGA Zone 56



Australian Rail Track Corporation
 Inland Rail - Parkes to Narromine

Job Number: 22-17916
 Revision: 0
 Date: 19 Jun 2017

Sensitive receiver locations Figure C2- Sheet 17

© 2017. While every care has been taken to prepare this map, GHD and LPI make no representations or warranties about its accuracy, reliability, completeness or suitability for any particular purpose and can not accept liability and responsibility of any kind (whether in contract, tort or otherwise) for any expenses, losses, damages and/or costs (including indirect or consequential damages) which are or may be incurred by any party as a result of the map being inaccurate, incomplete or available in any way and for any reason.
 Data source: LPI DTDR 2013 LPI Imagery 2012. Created by: Invision, Breakday, Apertio



LEGEND

- Residential receiver
- Watercourse
- The proposal
- Sub arterial road



Paper Size A4
 0 75 150 300 450 600
 Metres
 Map Projection: Transverse Mercator
 Horizontal Datum: GDA 1994
 Grid: GDA 1994 MGA Zone 56



Australian Rail Track Corporation
 Inland Rail - Parkes to Narromine

Job Number: 22-17916
 Revision: 0
 Date: 19 Jun 2017

Sensitive receiver locations **Figure C2- Sheet 20**

© 2017 GHD. All rights reserved. This map is the property of GHD and is not to be reproduced or used in any form without the written permission of GHD. GHD and its consultants accept no liability for any errors or omissions in this map. The map is provided for information only and is not to be used for any purpose other than that for which it was prepared. The map is not to be used for any purpose other than that for which it was prepared. The map is not to be used for any purpose other than that for which it was prepared.



LEGEND

- Residential receiver
- Watercourse
- The proposal
- Sub-arterial road



Paper Size A4
 0 75 150 300 450 600
 Metres
 Map Projection: Transverse Mercator
 Horizontal Datum: GDA 1994
 Grid: GDA 1994 MGA Zone 56



Australian Rail Track Corporation
 Inland Rail - Parkes to Narrabene

Job Number: 22-17916
 Revision: 0
 Date: 19 Jun 2017

Sensitive receiver locations Figure C2- Sheet 21

© 2017. While every care has been taken to prepare this map, GHD and LPI make no representations or warranties about its accuracy, reliability, completeness or suitability for any particular purpose and can not accept liability and responsibility of any kind (whether in contract, tort or otherwise) for any expenses, losses, damages and/or costs (including indirect or consequential damages) which are or may be incurred by any party as a result of the map being inaccurate, incomplete or available in any way and for any reason.
 Data source: LPI DTDR 2013, LPI Imagery 2012. Created by: Invision, Breakday, Apertis



LEGEND

- Residential receiver
- Watercourse
- The proposal
- Sub-arterial road



Paper Size A4
 0 75 150 300 450 600
 Metres
 Map Projection: Transverse Mercator
 Horizontal Datum: GDA 1994
 Grid: GDA 1994 MGA Zone 56



Australian Rail Track Corporation
 Inland Rail - Parkes to Narrandera

Job Number: 22-17916
 Revision: 0
 Date: 19 Jun 2017

Sensitive receiver locations Figure C2- Sheet 22

© 2017. While every care has been taken to prepare this map, GHD and LPI make no representations or warranties about its accuracy, reliability, completeness or suitability for any particular purpose and do not accept liability or responsibility of any kind (whether in contract, tort or otherwise) for any expenses, losses, damages and/or costs (including indirect or consequential damages) which are or may be incurred by any party as a result of the map being inaccurate, incomplete or available in any way and for any reason.
 Data source: LPI DTDR 2013 LPI Imagery 2012. Created by: Invision, Breakday, Apertis



LEGEND

- Residential receiver
- Watercourse
- The proposal
- Sub arterial road



Paper Size A4
 0 75 150 300 450 600
 Metres
 Map Projection: Transverse Mercator
 Horizontal Datum: GDA 1994
 Grid: GDA 1994 MGA Zone 56



Australian Rail Track Corporation
 Inland Rail - Parkes to Narramine

Job Number 22-17916
 Revision 0
 Date 19 Jun 2017

Sensitive receiver locations Figure C2- Sheet 23

© 2017. While every care has been taken to prepare this map, GHD and LPI make no representations or warranties about its accuracy, reliability, completeness or suitability for any particular purpose and cannot accept liability or responsibility of any kind, whether in contract, tort or otherwise, for any expenses, losses, damages and/or costs (including indirect or consequential damages) which are or may be incurred by any party as a result of the map being inaccurate, incomplete or available in any way and for any reason.
 Data source: LPI DTDR 2013 LPI Imagery 2012. Created by: Invision, Breakday, Agents



LEGEND

- The proposal
- Watercourse

Paper Size A4
 0 75 150 300 450 600
 Metres
 Map Projection: Transverse Mercator
 Horizontal Datum: GDA 1994
 Grid: GDA 1994 MGA Zone 56



Australian Rail Track Corporation
 Inland Rail - Parkes to Narbonne

Job Number: 22-17916
 Revision: 0
 Date: 19 Jun 2017

Sensitive receiver locations Figure C2- Sheet 24

© 2017. While every care has been taken to prepare this map, GHD and LPI make no representations or warranties about its accuracy, reliability, completeness or suitability for any particular purpose and can not accept liability and responsibility of any kind whether in contract, tort or otherwise for any expenses, losses, damages and/or costs (including indirect or consequential damages) which are or may be incurred by any party as a result of the map being inaccurate, incomplete or available in any way and for any reason.
 Data source: LPI DTDR 2013 LPI Imagery 2012 Created by: Invision, Breakday, Apertea



LEGEND

- Residential receiver
- The proposal
- Primary road
- Sub arterial road
- Watercourse

Paper Size A4
 0 75 150 300 450 600
 Metres
 Map Projection: Transverse Mercator
 Horizontal Datum: GDA 1994
 Grid: GDA 1994 MGA Zone 56

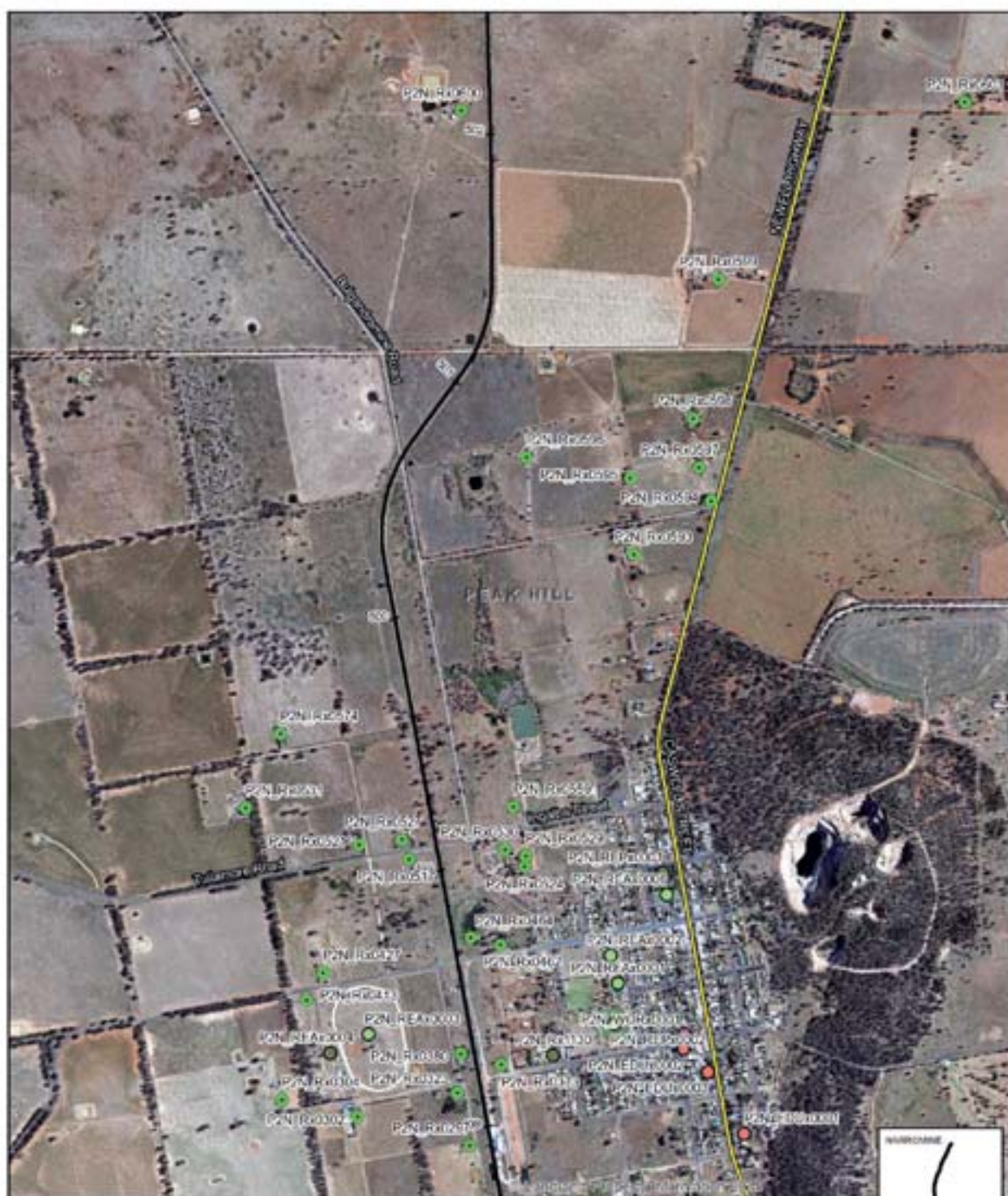


Australian Rail Track Corporation
 Inland Rail - Parkes to Narrandera

Job Number: 22-17916
 Revision: 0
 Date: 19 Jun 2017

Sensitive receiver locations Figure C2- Sheet 25

© 2017. While every care has been taken to prepare this map, GHD and LPI make no representations or warranties about its accuracy, reliability, completeness or suitability for any particular purpose and can not accept liability or responsibility of any kind (whether in contract, tort or otherwise) for any expenses, losses, damages and/or costs (including indirect or consequential damages) which are or may be incurred by any party as a result of the map being inaccurate, incomplete or available in any way and for any reason.
 Data source: LPI DTDR 2013, LPI Imagery 2012. Created by: Invision, Breakday, Apertis



LEGEND

- | | | | |
|--------------------|----------------------|-------------------|-------------|
| Active recreation | Religious | Primary road | Watercourse |
| Education | Residential receiver | Arterial road | |
| Passive recreation | The proposal | Sub arterial road | |



Paper Size A4
 0 75 150 300 450 600
 Metres
 Map Projection: Transverse Mercator
 Horizontal Datum: GDA 1994
 Grid: GDA 1994 MGA Zone 56



Australian Rail Track Corporation
 Inland Rail - Parkes to Narrabri

Job Number: 22-17916
 Revision: 0
 Date: 19 Jun 2017

Sensitive receiver locations Figure C2- Sheet 26

© 2017. While every care has been taken to prepare this map, GHD and LPI make no representations or warranties about its accuracy, reliability, completeness or suitability for any particular purpose and can not accept liability or responsibility of any kind whether in contract, tort or otherwise for any expenses, losses, damages and/or costs (including indirect or consequential damages) which are or may be incurred by any party as a result of the map being inaccurate, incomplete or unsuitable in any way and for any reason.
 Data source: LPI DTDR 2013, LPI Imagery 2012. Created by: Invision, Breakday, Agency



LEGEND

- Residential receiver
- Primary road
- Watercourse



Paper Size A4

0 10 20 30 40

Meters

Map Projection: Transverse Mercator
Horizontal Datum: GDA 1994
Grid: GDA 1994 MGA Zone 56



Australian Rail Track Corporation
Inland Rail - Parkes to Narrabri

Job Number: 22-17916
Revision: 0
Date: 19 Jun 2017

Sensitive receiver locations **Figure C2- Sheet 27**

0:22:17 PM 19/06/2017 \\mapserver\server\GDA\1994\2217916_NARRabri_P2N_SensitiveReceivers_Sheet.mxd Layer 3, GHD Towns, 24 Homebush Drive, Narrabri NSW 2390 T 61 2 4579 5555 F 61 2 4579 5555 E ctowns@ghd.com W www.ghd.com.au

© 2017. While every care has been taken to prepare this map, GHD and LPI make no representations or warranties about its accuracy, reliability, completeness or suitability for any particular purpose and can not accept liability or responsibility of any kind (whether in contract, tort or otherwise) for any expenses, losses, damages and/or costs (including indirect or consequential damages) which are or may be incurred by any party as a result of the map being inaccurate, incomplete or available in any way and for any reason.

Data source: LPI DTDR 2013 LPI Imagery 2012. Created by: Invision, Breakday, Apertis



LEGEND

-  Education
  Religious
  Residential receiver
 Primary road
 Watercourse

Paper Size A4
0 5 10 20 30 40
Millimeters
Map Projection: Transverse Mercator
Horizontal Datum: ED50 1956
Grid: UTM 1984 MGA Zone 58



Australian Rail Track Corporation
Inland Rail - Parkes to Narramine

Job Number	22-17916
Revision	0
Date	18 Jun 2017

Sensitive receiver locations Figure C2- Sheet 30

03/27/17-0001 MapasDefinicionPIN/Novel22/1015. NÚM. PIN. ServicioReservados. 3.º nivel. Level 3, 3RD TOWER, 21 PROMENADE DRIVE, NEUMARKT 1000 T.81 2 4079 1000 F.812 4079 1001 E. info@glf.com.ar www.glf.com.ar

© 2017. While every care has been taken to prepare this map, GLF and LPI make no representations or warranties about its accuracy, reliability, completeness or suitability for any particular purpose and we do not accept liability and responsibility for any third parties in contract, tort or otherwise. For any expenses, losses, damages and/or costs (including indirect or consequential damages) which are or may be incurred by any party as a result of this map being inaccurate, incomplete or otherwise in any way and for any reason.

Data source: LPI CDB 2015, LPI Imagery 2015. Created by: Incentive, Buenos Aires



LEGEND

- Education
  Residential receiver
  Primary road
 Watercourse



Paper Size A4
0 5 10 20 30 40
Markers
Map Projection: Transverse Mercator
Horizontal Datum: UTM 1984
Grid: UTM 1984 MGA Zone 55



Australian Rail Track Corporation
Inland Rail - Parkes to Narramine

Job Number	22-17916
Revision	0
Date	19 Jun 2017

Sensitive receiver locations Figure C2- Sheet 32

03/27/19-000184qDefendable/P2N/Novel2211915_NNOI_P2N_SerialsResources_3.indd 1 Level 3, 2400 Tunes, 24 Promenade Drive, Newmarket, NY 10959 T: 845 788 9743 F: 845 788 9001 E: info@glb.com W: www.glb.com



LEGEND

- Residential receiver
- Watercourse



Paper Size A4

0 5 10 20 30 40

Meters
Map Projection: Transverse Mercator
Horizontal Datum: GDA 1994
Grid: GDA 1994 MGA Zone 56



Australian Rail Track Corporation
Inland Rail - Parkes to Narrabri

Job Number 22-17916
Revision 0
Date 19 Jun 2017

Sensitive receiver locations Figure C2- Sheet 34

\\g:\projects\2017\InlandRail\MapData\ReceiverLocations\22-17916\NARR_P2N_SensitiveReceivers_Sheet34.mxd Layer 3, GHD Tools, 24 Homebush Drive, Narrabri NSW 2390 T 61 2 4579 5555 F 61 2 4579 5555 E c.stone@ghd.com W www.ghd.com.au

© 2017. While every care has been taken to prepare this map, GHD and LPI make no representations or warranties about its accuracy, reliability, completeness or suitability for any particular purpose and can not accept liability or responsibility of any kind (whether in contract, tort or otherwise) for any expenses, losses, damages and/or costs (including indirect or consequential damages) which are or may be incurred by any party as a result of the map being inaccurate, incomplete or available in any way and for any reason.

Data source: LPI DTDR 2013; LPI Imagery 2012. Created by: Invision, Breakday, Apertio



LEGEND

- | | |
|---|---------------------|
| ● Residential receiver | — Arterial road |
| — The proposal | — Sub arterial road |
| — Primary road | — Watercourse |



Paper Size A4
 0 75 150 300 450 600
 Metres
 Map Projection: Transverse Mercator
 Horizontal Datum: GDA 1994
 Grid: GDA 1994 MGA Zone 56



Australian Rail Track Corporation
 Inland Rail - Parkes to Narromine

Job Number: 22-17916
 Revision: 0
 Date: 19 Jun 2017

Sensitive receiver locations Figure C2- Sheet 38

© 2017. While every care has been taken to prepare this map, GHD and LPI make no representations or warranties about its accuracy, reliability, completeness or suitability for any particular purpose and do not accept liability or responsibility for any kind of liability in contract, tort or otherwise for any expenses, losses, damages and/or costs (including indirect or consequential damages) which are or may be incurred by any party as a result of the map being inaccurate, incomplete or available in any way and for any reason.
 Data source: LPI DTDR 2013, LPI Imagery 2012. Created by: Invision, Breakday, Apertis



LEGEND

- Residential receiver
- Watercourse
- The proposal
- Sub-arterial road



Paper Size A4
 0 75 150 300 450 600
 Metres
 Map Projection: Transverse Mercator
 Horizontal Datum: GDA 1994
 Grid: GDA 1994 MGA Zone 56



Australian Rail Track Corporation
 Inland Rail - Parkes to Narrandera

Job Number: 22-17916
 Revision: 0
 Date: 19 Jun 2017

Sensitive receiver locations Figure C2- Sheet 40

© 2017. While every care has been taken to prepare this map, GHD and LPI make no representations or warranties about its accuracy, reliability, completeness or suitability for any particular purpose and can not accept liability or responsibility of any kind (whether in contract, tort or otherwise) for any expenses, losses, damages and/or costs (including indirect or consequential damages) which are or may be incurred by any party as a result of the map being inaccurate, incomplete or available in any way and for any reason.
 Data source: LPI DTDR 2013, LPI Imagery 2012. Created by: Invision, Breakday, Apertio



LEGEND

- Residential receiver
- Watercourse
- The proposal
- Sub-arterial road



Paper Size A4
 0 75 150 300 450 600
 Metres
 Map Projection: Transverse Mercator
 Horizontal Datum: GDA 1994
 Grid: GDA 1994 MGA Zone 56



Australian Rail Track Corporation
 Inland Rail - Parkes to Narrabri

Job Number: 22-17916
 Revision: 0
 Date: 19 Jun 2017

Sensitive receiver locations Figure C2- Sheet 41

© 2017. While every care has been taken to prepare this map, GHD and LPI make no representations or warranties about its accuracy, reliability, completeness or suitability for any particular purpose and do not accept liability for any loss or damage, whether in contract, tort or otherwise, for any expenses, losses, damages and/or costs (including interest or consequential damages) which may or may be incurred by any party as a result of the map being inaccurate, incomplete or available in any way and for any reason.
 Data source: LPI DTDR 2013, LPI Imagery 2012. Created by: Invision, Brookday, Agents



LEGEND

- Residential receiver
- Watercourse
- The proposal
- Sub arterial road



Paper Size A4
 0 75 150 300 450 600
 Metres
 Map Projection: Transverse Mercator
 Horizontal Datum: GDA 1994
 Grid: GDA 1994 MGA Zone 56



Australian Rail Track Corporation
 Inland Rail - Parkes to Narrongine

Job Number 22-17916
 Revision 0
 Date 19 Jun 2017

Sensitive receiver locations Figure C2- Sheet 42

© 2017. While every care has been taken to prepare this map, GHD and LPI make no representations or warranties about its accuracy, reliability, completeness or suitability for any particular purpose and can not accept liability or responsibility of any kind (whether in contract, tort or otherwise) for any expenses, losses, damages and/or costs (including indirect or consequential damages) which may or may be incurred by any party as a result of the map being inaccurate, incomplete or available in any way and for any reason.
 Data source: LPI DTDR 2013, LPI Imagery 2012. Created by: Invision, Brookday, Apertis



LEGEND

- Residential receiver
- Watercourse
- The proposal
- Sub arterial road

Paper Size A4
 0 75 150 300 450 600
 Metres
 Map Projection: Transverse Mercator
 Horizontal Datum: GDA 1994
 Grid: GDA 1994 MGA Zone 56



Australian Rail Track Corporation
 Inland Rail - Parkes to Narrabene

Job Number 22-17916
 Revision 0
 Date 19 Jun 2017

Sensitive receiver locations Figure C2- Sheet 43

© 2017. While every care has been taken to prepare this map, GHD and LPI make no representations or warranties about its accuracy, reliability, completeness or suitability for any particular purpose and can not accept liability or responsibility of any kind (whether in contract, tort or otherwise) for any expenses, losses, damages and/or costs (including indirect or consequential damages) which are or may be incurred by any party as a result of the map being inaccurate, incomplete or available in any way and for any reason.
 Data source: LPI DTDR 2013, LPI Imagery 2012. Created by: Invision, Brookday, Agribits



LEGEND

- Residential receiver
- Watercourse
- The proposal
- Sub-arterial road



Paper Size A4
 0 75 150 300 450 600
 Metres
 Map Projection: Transverse Mercator
 Horizontal Datum: GDA 1994
 Grid: GDA 1994 MGA Zone 56



Australian Rail Track Corporation
 Inland Rail - Parkes to Narramine

Job Number: 22-17916
 Revision: 0
 Date: 19 Jun 2017

Sensitive receiver locations Figure C2- Sheet 44

© 2017. While every care has been taken to prepare this map, GHD and LPI make no representations or warranties as to the accuracy, reliability, completeness or suitability for any particular purpose and do not accept liability or responsibility of any kind (whether in contract, tort or otherwise) for any expenses, losses, damages and/or costs (including indirect or consequential damages) which are or may be incurred by any party as a result of the map being inaccurate, incomplete or available in any way and for any reason.
 Data source: LPI CTDB 2013, LPI Imagery 2012. Created by: Invision, Brookday, Agribase



LEGEND

- Residential receiver
- Watercourse
- The proposal
- Sub arterial road



Paper Size A4
 0 75 150 300 450 600
 Metres
 Map Projection: Transverse Mercator
 Horizontal Datum: GDA 1994
 Grid: GDA 1994 MGA Zone 56

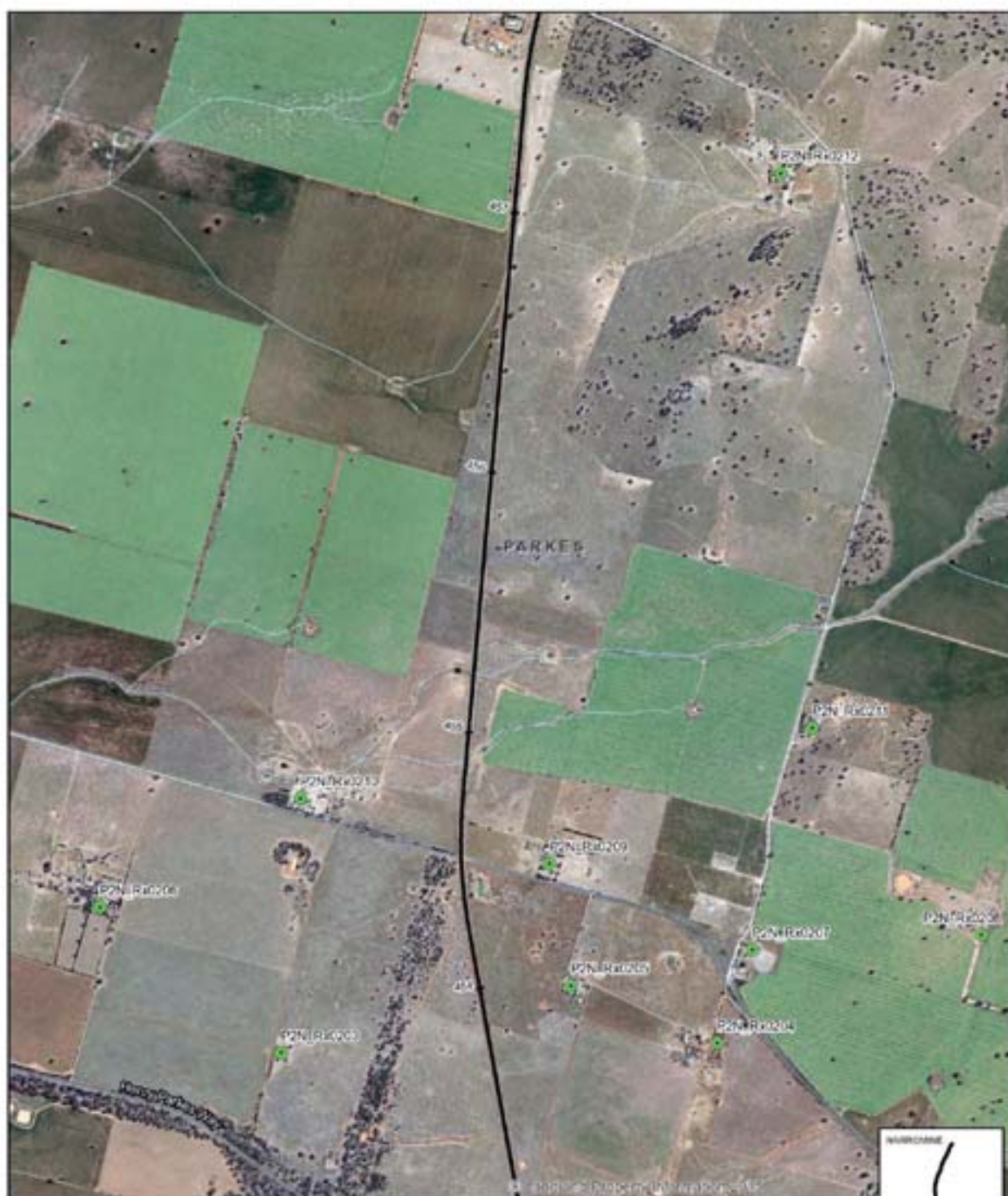


Australian Rail Track Corporation
 Inland Rail - Parkes to Narrandera

Job Number: 22-17916
 Revision: 0
 Date: 19 Jun 2017

Sensitive receiver locations Figure C2- Sheet 45

© 2017. While every care has been taken to prepare this map, GHD and LPI make no representations or warranties about its accuracy, reliability, completeness or suitability for any particular purpose and can not accept liability or responsibility of any kind (whether in contract, tort or otherwise) for any expenses, losses, damages and/or costs (including indirect or consequential damages) which are or may be incurred by any party as a result of the map being inaccurate, incomplete or available in any way and for any reason.
 Data source: LPI DTDR 2013, LPI Imagery 2012. Created by: Invision, Breakday, Apertis



LEGEND

- Residential receiver
- Watercourse
- The proposal
- Arterial road

Paper Size A4
 0 75 150 300 450 600
 Metres
 Map Projection: Transverse Mercator
 Horizontal Datum: GDA 1994
 Grid: GDA 1994 MGA Zone 56



Australian Rail Track Corporation
 Inland Rail - Parkes to Narramine

Job Number: 22-17916
 Revision: 0
 Date: 19 Jun 2017

Sensitive receiver locations Figure C2- Sheet 46

© 2017. While every care has been taken to prepare this map, GHD and LPI make no representations or warranties about the accuracy, reliability, completeness or suitability for any particular purpose and do not accept liability or responsibility of any kind (whether in contract, tort or otherwise) for any expenses, losses, damages and/or costs (including indirect or consequential damages) which may or may be incurred by any party as a result of the map being inaccurate, incomplete or available in any way and for any reason.
 Data source: LPI CTDB 2013; LPI Imagery 2012. Created by: Invision, Breakday, Apertio



LEGEND

- Residential receiver
- Watercourse
- Arterial road
- Sub arterial road



Paper Size A4

0 5 10 20 30 40

Meters
Map Projection: Transverse Mercator
Horizontal Datum: GDA 1994
Grid: GDA 1994 MGA Zone 55



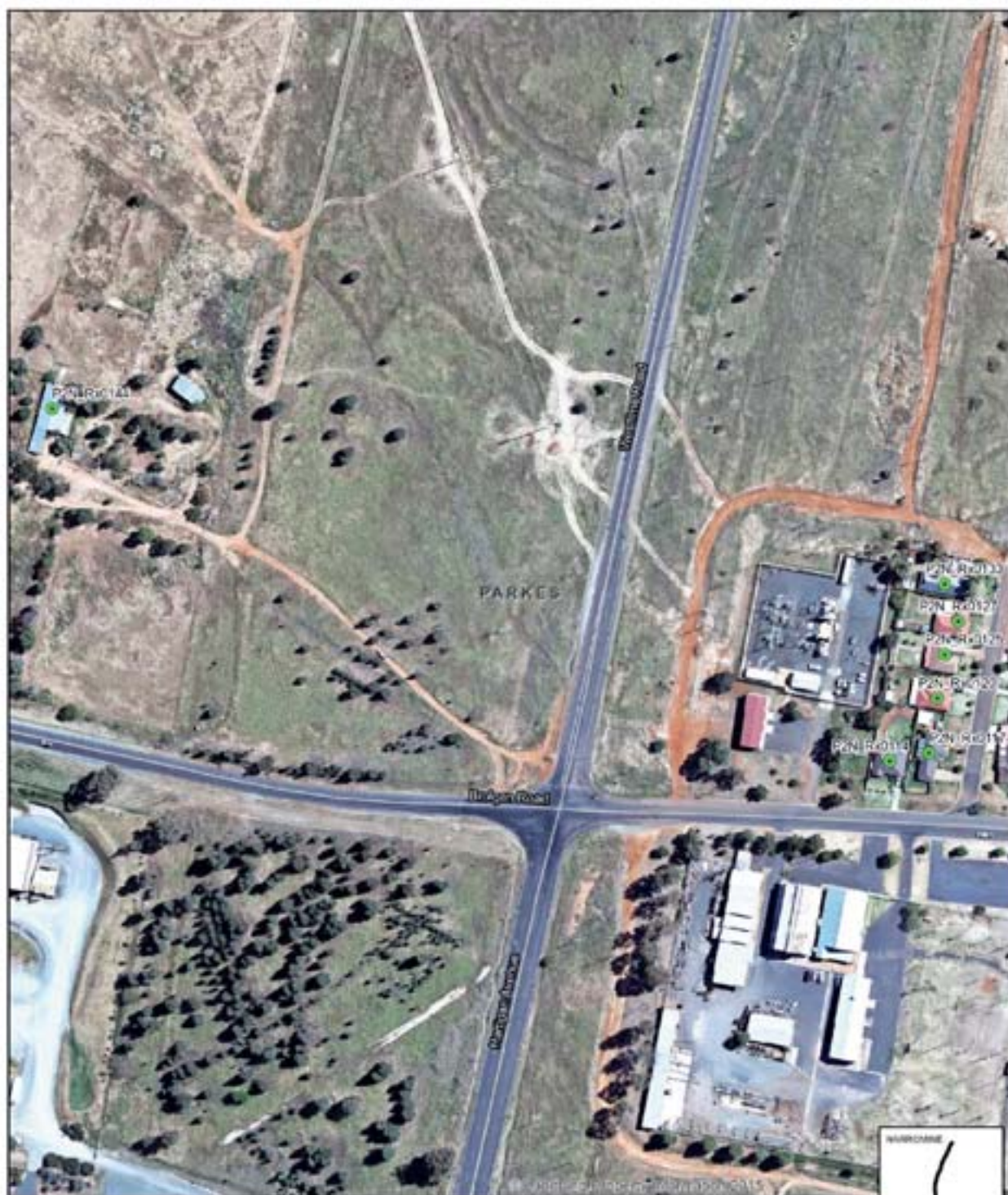
Australian Rail Track Corporation
Inland Rail - Parkes to Narrabri

Job Number: 22-17916
Revision: 0
Date: 19 Jun 2017

Sensitive receiver locations Figure C2- Sheet 49

© 2017. All rights reserved. This map, GHD and LPI make no representations or warranties about the accuracy, reliability, completeness or suitability for any particular purpose and can not accept liability and responsibility of any kind (whether in contract, tort or otherwise) for any expenses, losses, damages and/or costs (including indirect or consequential damages) which are or may be incurred by any party as a result of the map being inaccurate, incomplete or available in any way and for any reason.

Data source: LPI DTDR 2013, LPI Imagery 2012. Created by: Invision, Breakday, Agency



LEGEND

- Residential receiver
- Sub arterial road
- Watercourse



Paper Size A4
0 10 20 30 40
Metres
Map Projection: Transverse Mercator
Horizontal Datum: GDA 1994
Grid: GDA 1994 MGA Zone 56



Australian Rail Track Corporation
Inland Rail - Parkes to Narrabrie

Job Number: 22-17916
Revision: 0
Date: 19 Jun 2017

Sensitive receiver locations Figure C2- Sheet 50

© 2017. While every care has been taken to prepare this map, GHD and LPI make no representations or warranties about its accuracy, reliability, completeness or suitability for any particular purpose and can not accept liability or responsibility of any kind (whether in contract, tort or otherwise) for any expenses, losses, damages and/or costs (including indirect or consequential damages) which may or may be incurred by any party as a result of the map being inaccurate, incomplete or available in any way and for any reason.
Data source: LPI DTDR 2013, LPI Imagery 2012. Created by: Invision, Breakday, Apertis



LEGEND

- Residential receiver
- Sub-arterial road
- Watercourse

Paper Size A4
0 5 10 20 30 40
Metres
Map Projection: Transverse Mercator
Horizontal Datum: GDA 1994
Grid: GDA 1994 MGA Zone 56



Australian Rail Track Corporation
Inland Rail - Parkes to Narromine

Job Number 22-17916
Revision 0
Date 19 Jun 2017

Sensitive receiver locations Figure C2- Sheet 51

© 2017. While every care has been taken to prepare this map, GHD and LPI make no representations or warranties about its accuracy, reliability, completeness or suitability for any particular purpose and can accept no liability or responsibility of any kind whether in contract, tort or otherwise, for any expenses, losses, damages and/or costs (including interest or consequential damages) which are or may be incurred by any party as a result of the map being inaccurate, incomplete or available in any way used for any reason.

Data source: LPI DTDR 2013, LPI Imagery 2012. Created by: Invision, Breakday, Agents



LEGEND

Residential receiver
Watercourse



Paper Size A4
0 5 10 20 30 40
Millimeters
Map Projection: Transverse Mercator
Horizontal Datum: UTM 1984
Grid: UTM 1984 MGA Zone 50





LEGEND

- Residential receiver
- Sub-arterial road
- Watercourse

Paper Size A4
0 10 20 30 40
Metres
Map Projection: Transverse Mercator
Horizontal Datum: GDA 1994
Grid: GDA 1994 MGA Zone 56



Australian Rail Track Corporation
Inland Rail - Parkes to Narrine

Job Number: 22-17916
Revision: 0
Date: 19 Jun 2017

Sensitive receiver locations Figure C2- Sheet 54

© 2017. While every care has been taken to prepare this map, GHD and LPI make no representations or warranties about its accuracy, reliability, completeness or suitability for any particular purpose and accept no liability or responsibility of any kind (whether in contract, tort or otherwise) for any omissions, errors, damages and/or costs (including related or consequential damages) which are or may be incurred by any party as a result of the map being inaccurate, incomplete or otherwise in any way used for any reason.
Data source: LPI DTDR 2013, LPI Imagery 2012. Created by: Invision, Breakday, Agents