

APPENDIX

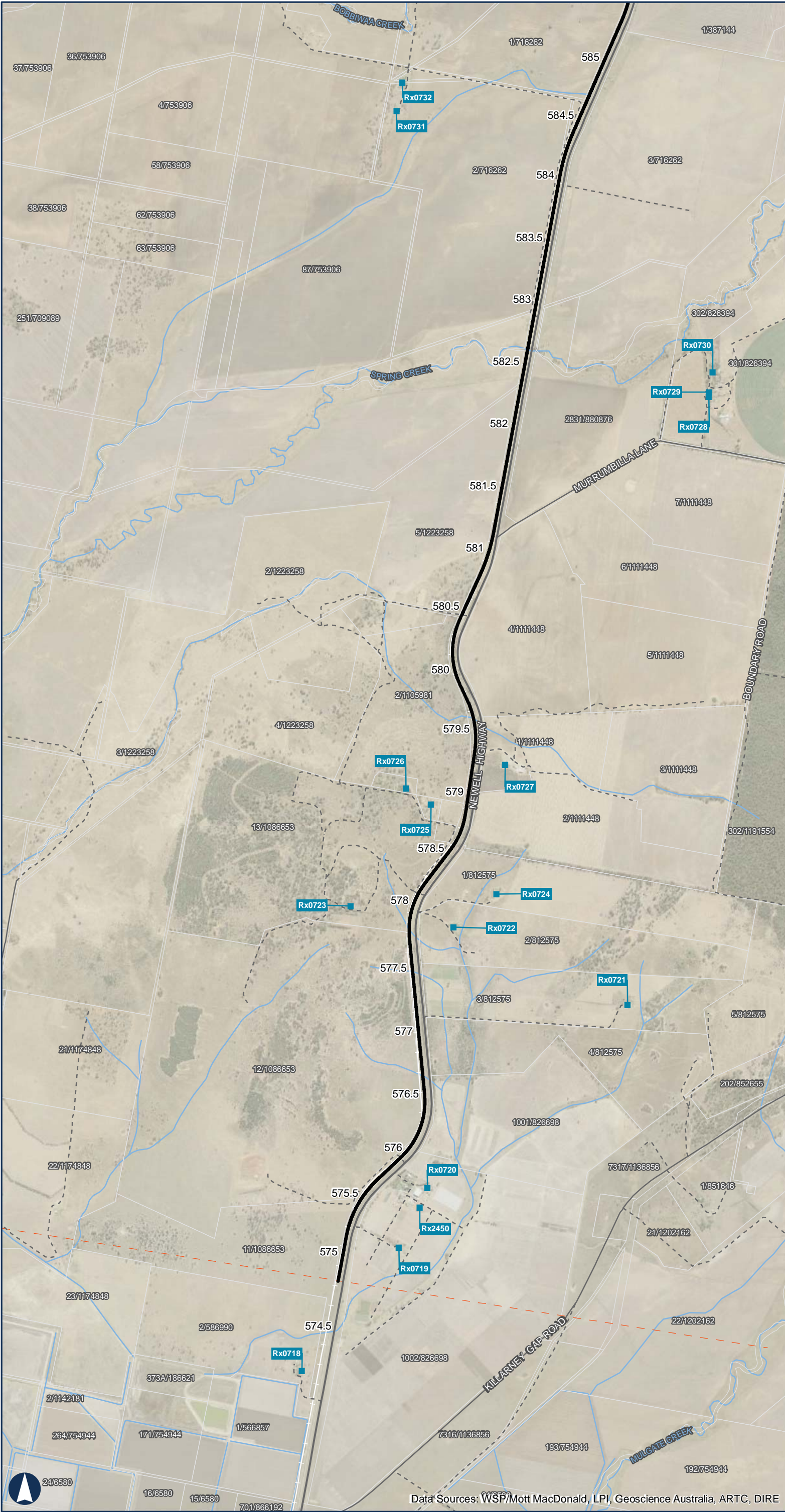
D

Operational Noise and Vibration Assessment

Attachment A Noise Sensitive Receptors

NARRABRI TO NORTH STAR SUBMISSIONS PREFERRED INFRASTRUCTURE REPORT





NARRABRI TO NORTH STAR

Appendix A
Noise Sensitive Receivers

Sheet 1 of 16

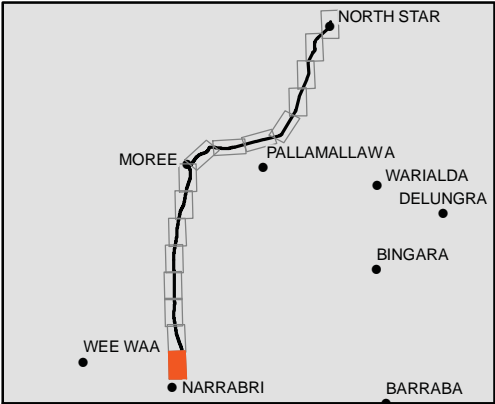
LEGEND

- Townships
- Highway
- Local Road
- - - Track
- Existing Rail Network
- - - Proposed Rail Separation
- Watercourse
- Phase 3 Track Alignment
- Cadastre

Rail Receivers

- Education
- Hospital Ward
- Active Recreation
- Passive Recreation
- Residential
- Place of Worship

NOT FOR PUBLICATION. FOR
CONSULTATION PURPOSES ONLY.



0.75 Km

Coordinate System: GDA 1994 MGA Zone 55

ARTC makes no representation or warranty and assumes no duty of care or other responsibility to any party as to the completeness, accuracy or suitability of the information contained in this GIS map. The GIS map has been prepared from material provided to ARTC by an external source and ARTC has not taken any steps to verify the completeness, accuracy or suitability of that material. ARTC will not be responsible for any loss or damage suffered as a result of any person whatsoever placing reliance upon the information contained within this GIS map.

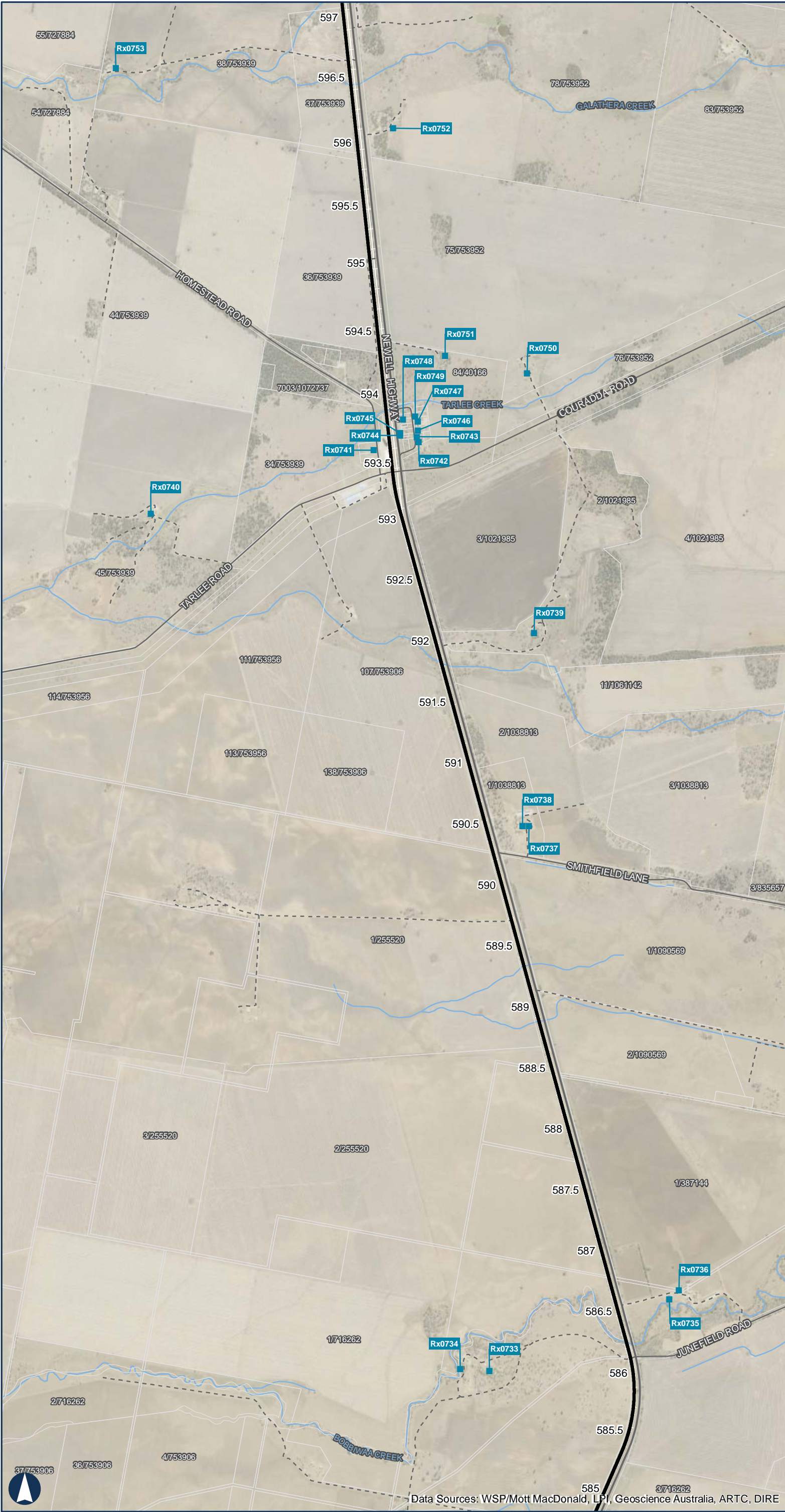
Paper: A3

Scale: 1:30,000

Date: 16/08/2019

Author: IRDJV

Data Sources: WSP/Mott MacDonald, LPI, Geoscience Australia, ARTC, DIRE



NARRABRI TO NORTH STAR

Appendix A
Noise Sensitive Receivers

Sheet 2 of 16

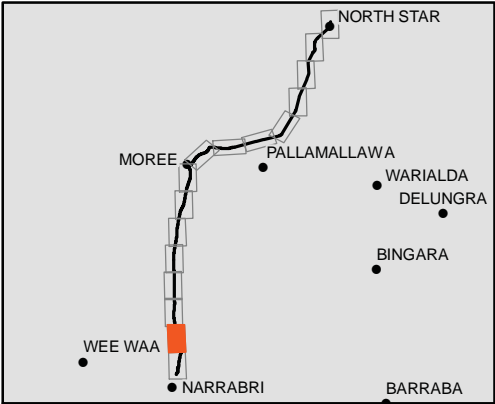
LEGEND

- Townships
- Highway
- Local Road
- Track
- Existing Rail Network
- Proposed Rail Separation
- Watercourse
- Phase 3 Track Alignment

Rail Receivers

- Education
- Hospital Ward
- Active Recreation
- Passive Recreation
- Residential
- Place of Worship

NOT FOR PUBLICATION. FOR
CONSULTATION PURPOSES ONLY.



0.75 Km

Coordinate System: GDA 1994 MGA Zone 55

ARTC makes no representation or warranty and assumes no duty of care or other responsibility to any party as to the completeness, accuracy or suitability of the information contained in this GIS map. The GIS map has been prepared from material provided to ARTC by an external source and ARTC has not taken any steps to verify the completeness, accuracy or suitability of that material. ARTC will not be responsible for any loss or damage suffered as a result of any person whatsoever placing reliance upon the information contained within this GIS map.

Paper: A3
Date: 16/08/2019
Author: IRDJV

Scale: 1:30,000



NARRABRI TO NORTH STAR

Appendix A
Noise Sensitive Receivers

Sheet 3 of 16

LEGEND

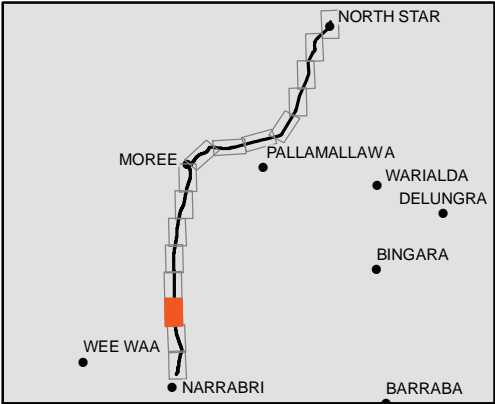
- Townships
- Highway
- Local Road
- - - Track
- Existing Rail Network
- - - Proposed Rail Separation
- Watercourse
- Phase 3 Track Alignment

Cadastre

Rail Receivers

- Education
- Hospital Ward
- Active Recreation
- Passive Recreation
- Residential
- Place of Worship

NOT FOR PUBLICATION. FOR
CONSULTATION PURPOSES ONLY.



Coordinate System: GDA 1994 MGA Zone 55

ARTC makes no representation or warranty and assumes no duty of care or other responsibility to any party as to the completeness, accuracy or suitability of the information contained in this GIS map. The GIS map has been prepared from material provided to ARTC by an external source and ARTC has not taken any steps to verify the completeness, accuracy or suitability of that material. ARTC will not be responsible for any loss or damage suffered as a result of any person whatsoever placing reliance upon the information contained within this GIS map.

Paper: A3
Date: 16/08/2019
Author: IRDJV
Scale: 1:30,000

Data Sources: WSP/Mott MacDonald, LPI, Geoscience Australia, ARTC, DIRE

Appendix A

Noise Sensitive Receivers

Sheet 4 of 16

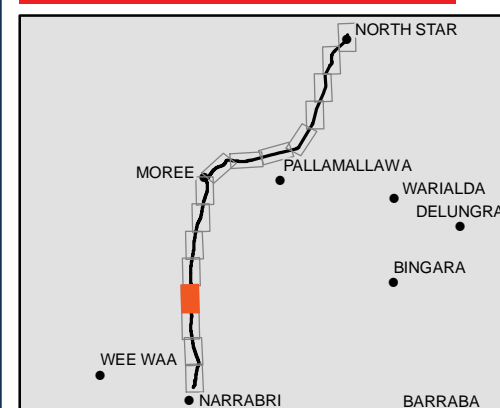
LEGEND

- Townships
 — Highway
 — Local Road
 - - - Track
 Existing Rail Network
 - - - Proposed Rail Separation
 Watercourse
 Phase 3 Track Alignment

Rail Receivers

- Education
- Hospital Ward
- Active Recreation
- Passive Recreation
- Residential
- Place of Worship

**NOT FOR PUBLICATION. FOR
CONSULTATION PURPOSES ONLY.**



0.75 Km

Coordinate System: GDA 1994 MGA Zone 55

ARTC makes no representation or warranty and assumes no duty of care or other responsibility to any party as to the completeness, accuracy or suitability of the information contained in this GIS map. The GIS map has been prepared from material provided to ARTC by an external source and ARTC has not taken any steps to verify the completeness, accuracy or suitability of that material.

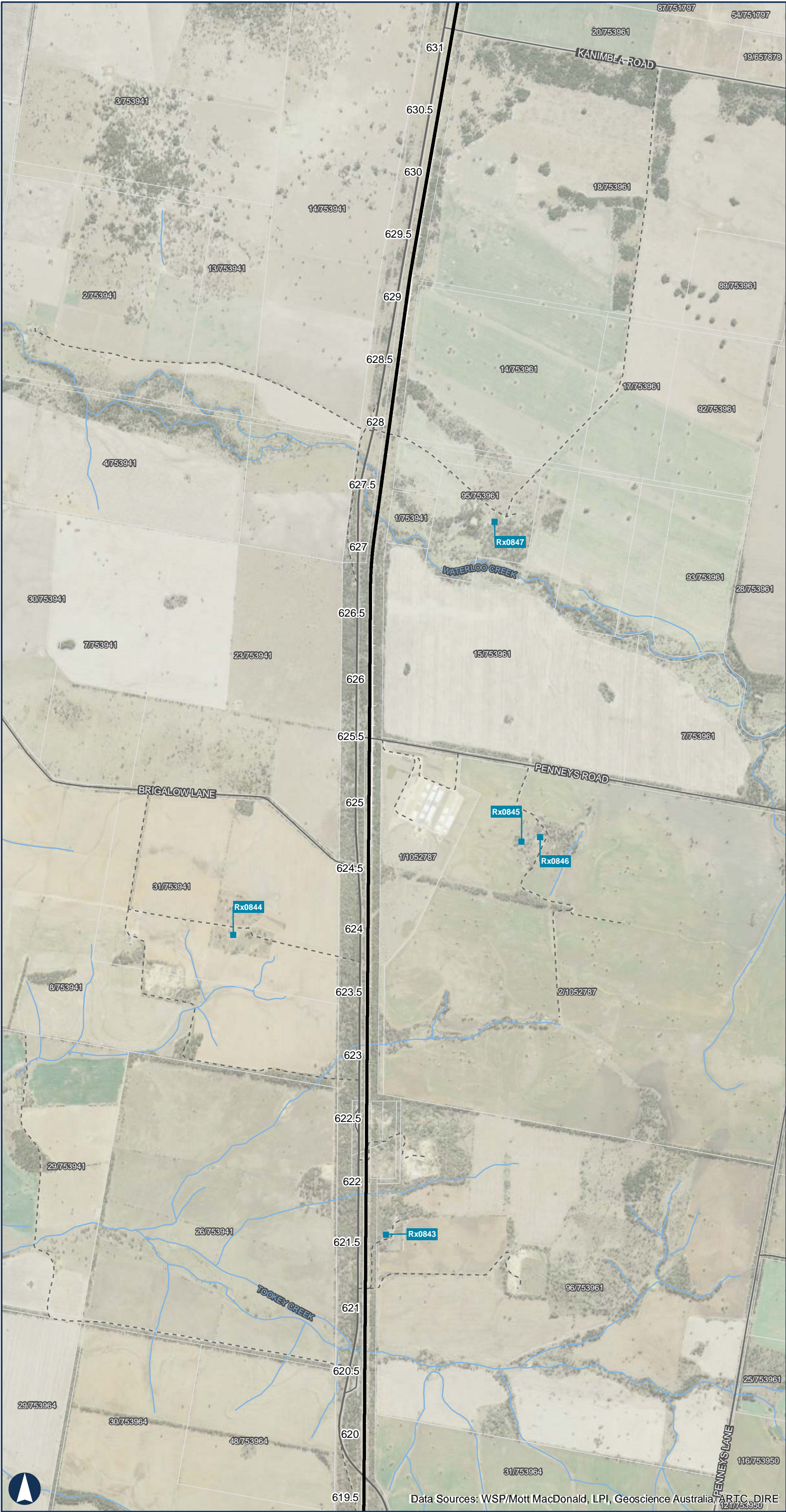
ARTC will not be responsible for any loss or damage suffered as a result of any person whatsoever placing reliance upon the information contained within this GIS map.

Paper: A3

Scale: 1:30.000

Date: 16/08/2019

Author: IRDJV



NARRABRI TO NORTH STAR

Appendix A
Noise Sensitive Receivers

Sheet 5 of 16

LEGEND

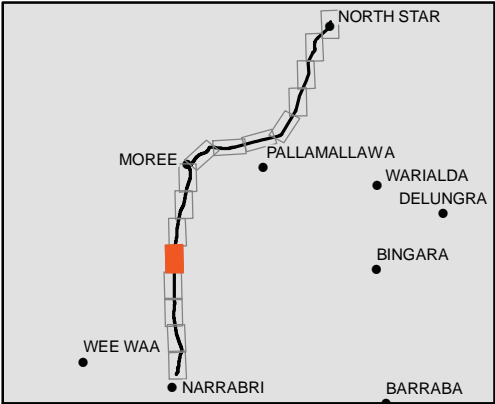
- Townships
- Highway
- Local Road
- Track
- Existing Rail Network
- Proposed Rail Separation
- Watercourse
- Phase 3 Track Alignment

Cadastre

Rail Receivers

- Education
- Hospital Ward
- Active Recreation
- Passive Recreation
- Residential
- Place of Worship

NOT FOR PUBLICATION. FOR CONSULTATION PURPOSES ONLY.



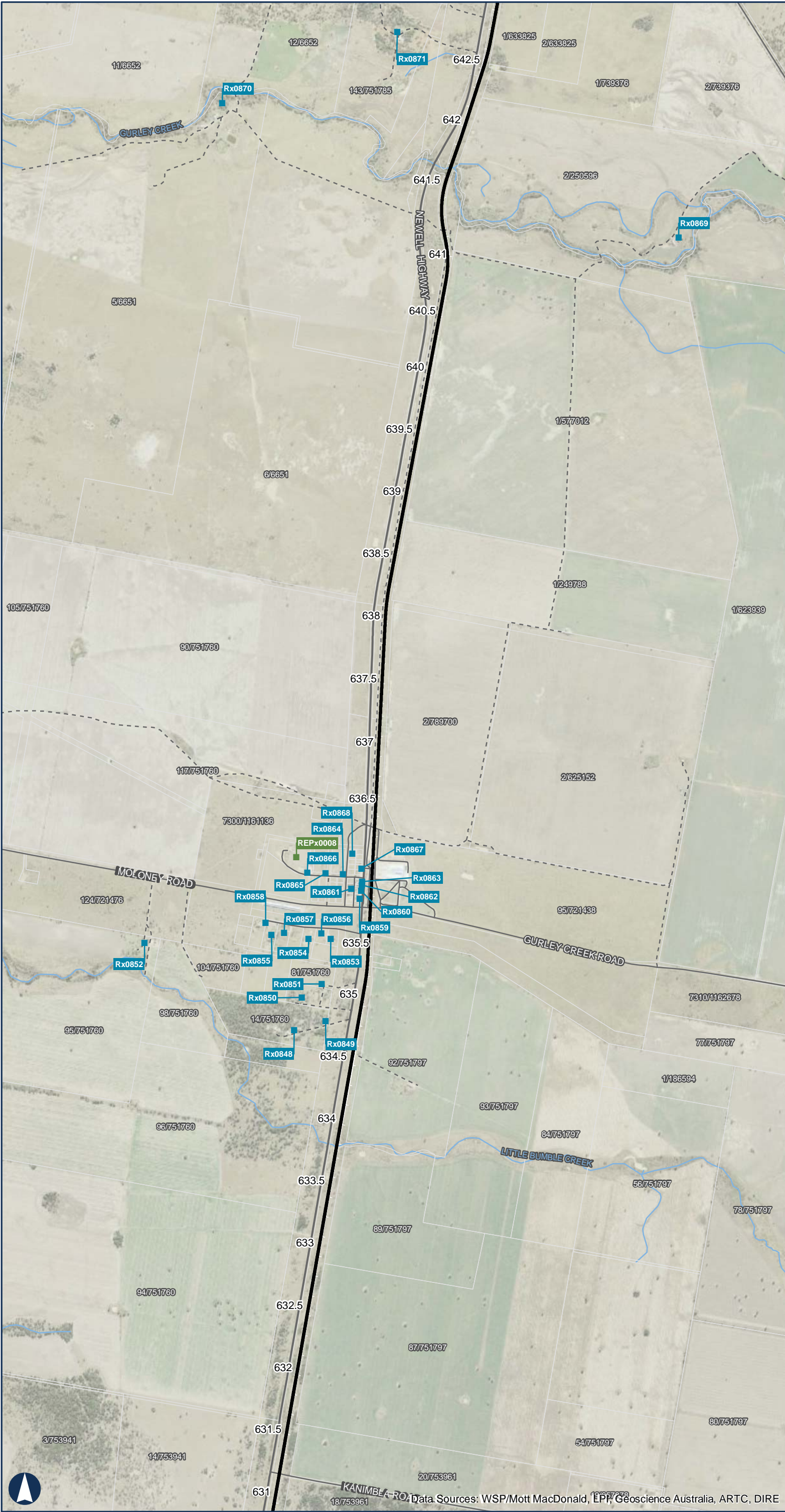
0.75 Km

Coordinate System: GDA 1994 MGA Zone 55

ARTC makes no representation or warranty and assumes no duty of care or other responsibility to any party as to the completeness, accuracy or suitability of the information contained in this GIS map. The GIS map has been prepared from material provided to ARTC by an external source and ARTC has not taken any steps to verify the completeness, accuracy or suitability of that material. ARTC will not be responsible for any loss or damage suffered as a result of any person whatsoever placing reliance upon the information contained within this GIS map.

Paper: A3
Date: 16/08/2019
Author: IRDJV

Scale: 1:30,000



NARRABRI TO NORTH STAR

Appendix A
Noise Sensitive Receivers

Sheet 6 of 16

LEGEND

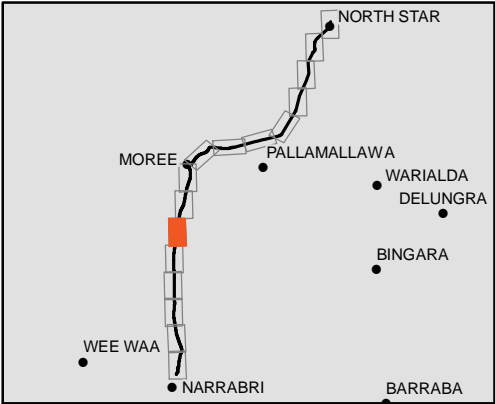
- Townships
- Highway
- Local Road
- Track
- Existing Rail Network
- Proposed Rail Separation
- Watercourse
- Phase 3 Track Alignment

Cadastre

Rail Receivers

- Education
- Hospital Ward
- Active Recreation
- Passive Recreation
- Residential
- Place of Worship

NOT FOR PUBLICATION. FOR
CONSULTATION PURPOSES ONLY.



0.75 Km

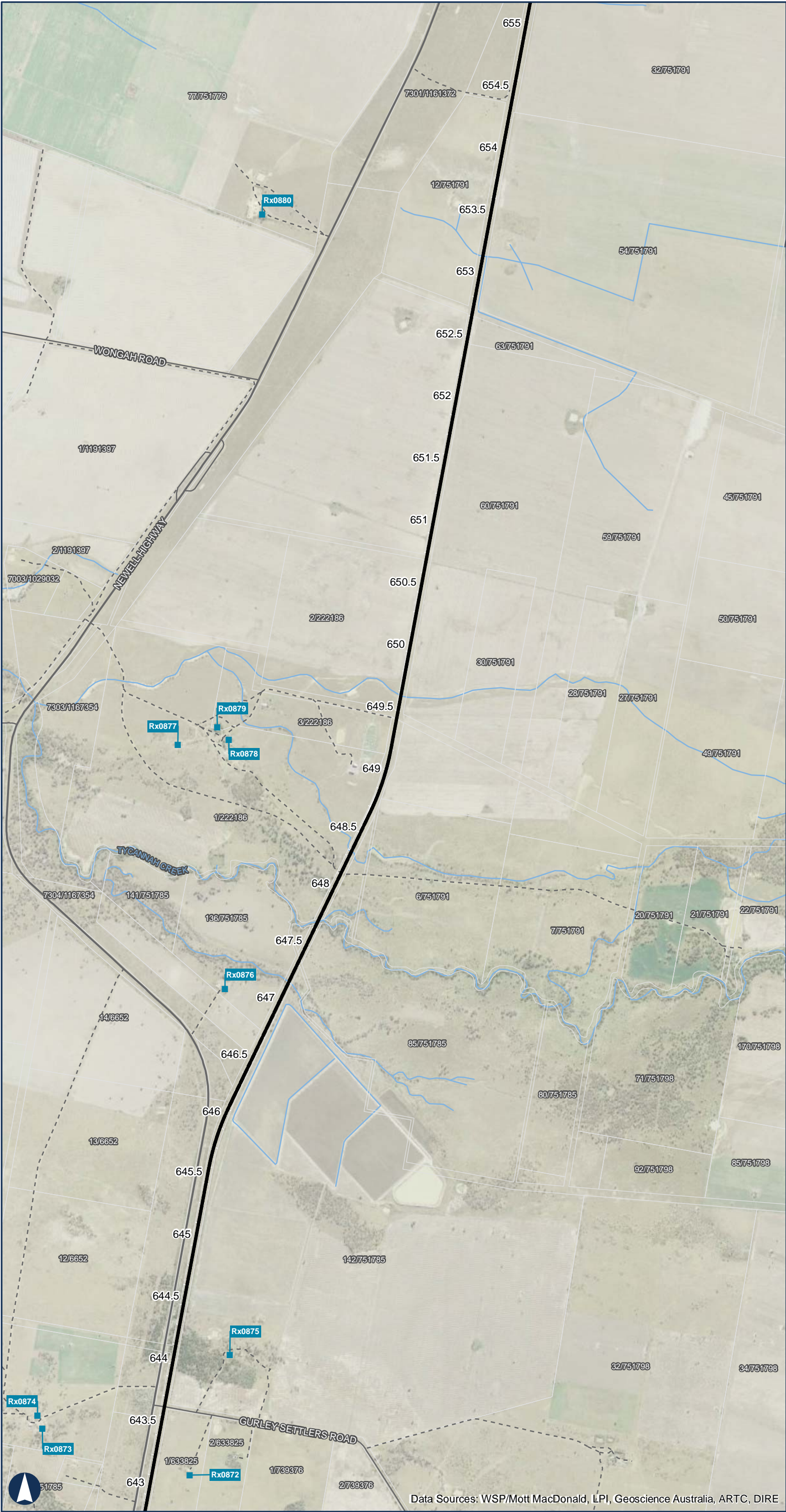
Coordinate System: GDA 1994 MGA Zone 55

ARTC makes no representation or warranty and assumes no duty of care or other responsibility to any party as to the completeness, accuracy or suitability of the information contained in this GIS map. The GIS map has been prepared from material provided to ARTC by an external source and ARTC has not taken any steps to verify the completeness, accuracy or suitability of that material. ARTC will not be responsible for any loss or damage suffered as a result of any person whatsoever placing reliance upon the information contained within this GIS map.

Paper: A3
Date: 16/08/2019
Author: IRDJV

Scale: 1:30,000





NARRABRI TO NORTH STAR

Appendix A
Noise Sensitive Receivers

Sheet 7 of 16

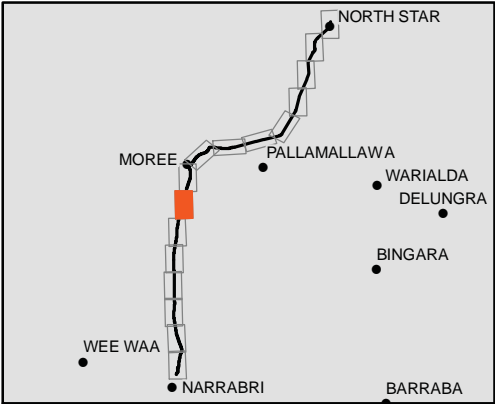
LEGEND

- Townships
- Highway
- Local Road
- - - Track
- Existing Rail Network
- - - Proposed Rail Separation
- Watercourse
- Phase 3 Track Alignment
- Cadastre

Rail Receivers

- Education
- Hospital Ward
- Active Recreation
- Passive Recreation
- Residential
- Place of Worship

NOT FOR PUBLICATION. FOR
CONSULTATION PURPOSES ONLY.

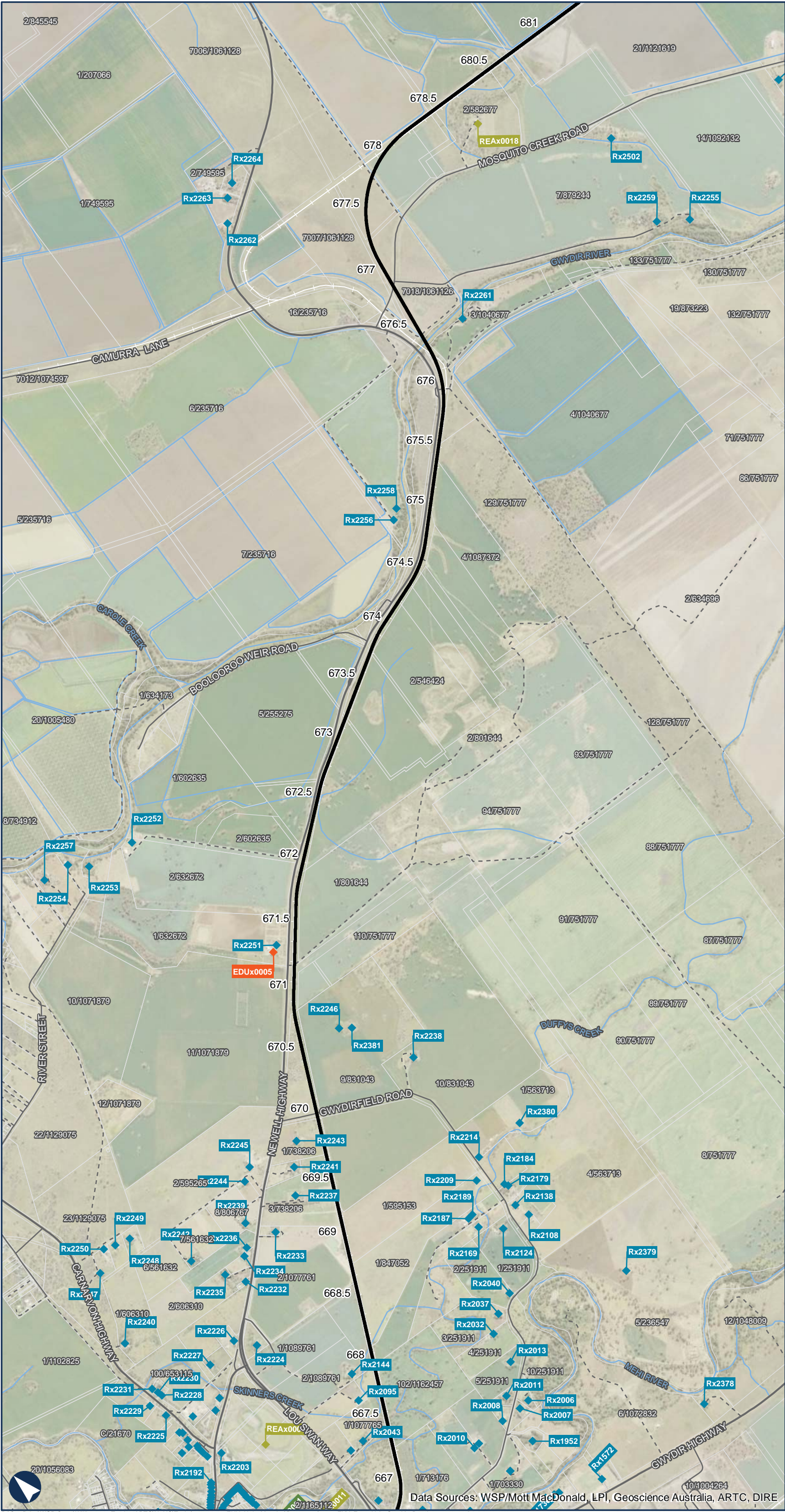


Coordinate System: GDA 1994 MGA Zone 55

ARTC makes no representation or warranty and assumes no duty of care or other responsibility to any party as to the completeness, accuracy or suitability of the information contained in this GIS map. The GIS map has been prepared from material provided to ARTC by an external source and ARTC has not taken any steps to verify the completeness, accuracy or suitability of that material. ARTC will not be responsible for any loss or damage suffered as a result of any person whatsoever placing reliance upon the information contained within this GIS map.

Paper: A3
Date: 16/08/2019
Author: IRDJV

Scale: 1:30,000



NARRABRI TO NORTH STAR

Appendix A
Noise Sensitive Receivers

Sheet 9 of 16

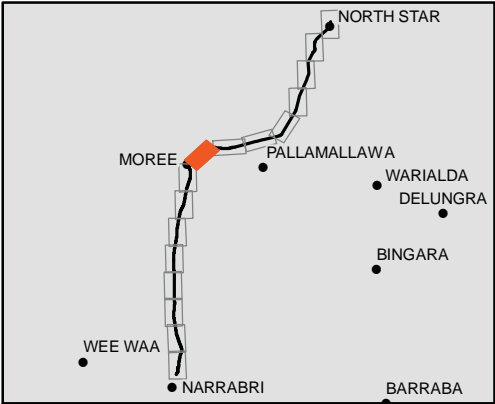
LEGEND

- Townships
- Highway
- Local Road
- Track
- Existing Rail Network
- Proposed Rail Separation
- Watercourse
- Phase 3 Track Alignment
- Cadastral

Rail Receivers

- Education
- Hospital Ward
- Active Recreation
- Passive Recreation
- Residential
- Place of Worship

NOT FOR PUBLICATION. FOR CONSULTATION PURPOSES ONLY.



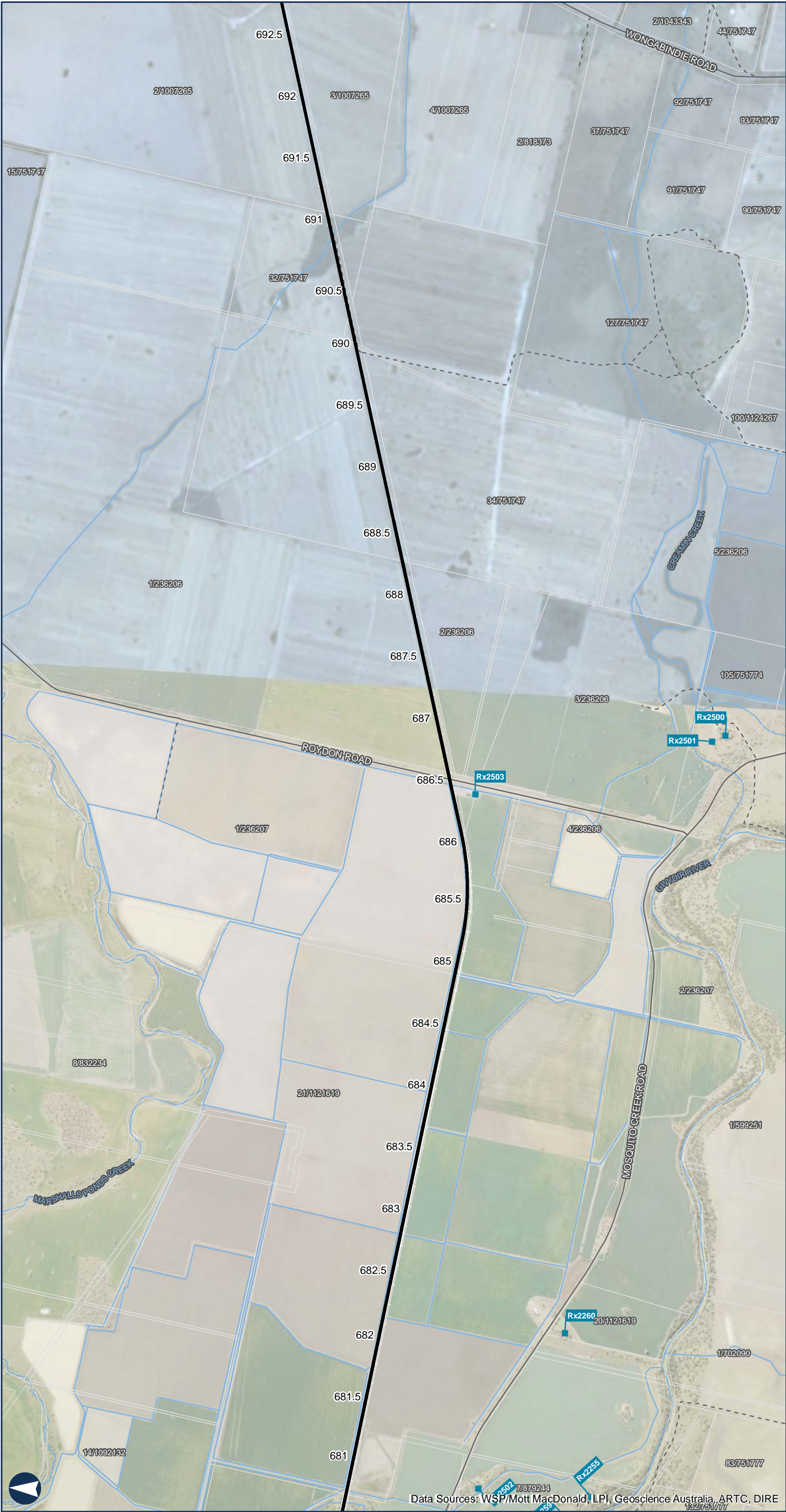
Coordinate System: GDA 1994 MGA Zone 55

ARTC makes no representation or warranty and assumes no duty of care or other responsibility to any party as to the completeness, accuracy or suitability of the information contained in this GIS map. The GIS map has been prepared from material provided to ARTC by an external source and ARTC has not taken any steps to verify the completeness, accuracy or suitability of that material. ARTC will not be responsible for any loss or damage suffered as a result of any person whatsoever placing reliance upon the information contained within this GIS map.

Paper: A3
 Date: 16/08/2019
 Author: IRDJV

Scale: 1:30,000

Data Sources: WSP/Mott MacDonald, LPI, Geoscience Australia, ARTC, DIRE



NARRABRI TO NORTH STAR

Appendix A
Noise Sensitive Receivers

Sheet 10 of 16

LEGEND

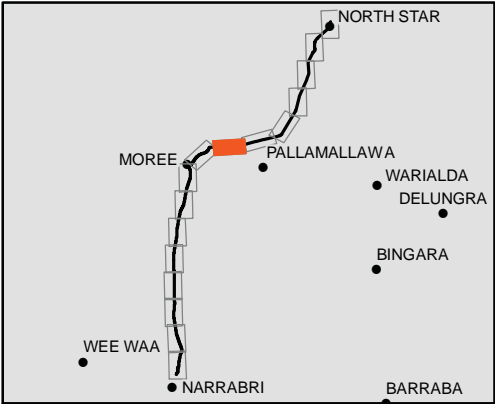
- Townships
- Highway
- Local Road
- Track
- Existing Rail Network
- Proposed Rail Separation
- Watercourse
- Phase 3 Track Alignment

Cadastre

Rail Receivers

- Education
- Hospital Ward
- Active Recreation
- Passive Recreation
- Residential
- Place of Worship

NOT FOR PUBLICATION. FOR
CONSULTATION PURPOSES ONLY.



Coordinate System: GDA 1994 MGA Zone 55

ARTC makes no representation or warranty and assumes no duty of care or other responsibility to any party as to the completeness, accuracy or suitability of the information contained in this GIS map. The GIS map has been prepared from material provided to ARTC by an external source and ARTC has not taken any steps to verify the completeness, accuracy or suitability of that material. ARTC will not be responsible for any loss or damage suffered as a result of any person whatsoever placing reliance upon the information contained within this GIS map.

Paper: A3
Date: 16/08/2019
Author: IRDJV
Scale: 1:30,000

Data Sources: WSP/Mott MacDonald, LPI, Geoscience Australia, ARTC, DIRE



NARRABRI TO NORTH STAR

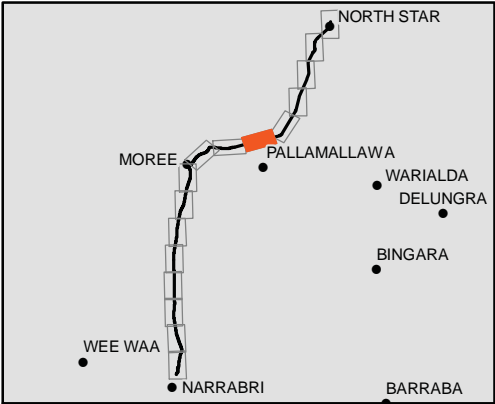
Appendix A
Noise Sensitive Receivers

Sheet 11 of 16

LEGEND

- Townships
- Highway
- Local Road
- - - Track
- Existing Rail Network
- - - Proposed Rail Separation
- Watercourse
- Phase 3 Track Alignment
- Cadastre
- Rail Receivers**
 - Education
 - Hospital Ward
 - Active Recreation
 - Passive Recreation
 - Residential
 - Place of Worship

NOT FOR PUBLICATION. FOR
CONSULTATION PURPOSES ONLY.



Coordinate System: GDA 1994 MGA Zone 55

ARTC makes no representation or warranty and assumes no duty of care or other responsibility to any party as to the completeness, accuracy or suitability of the information contained in this GIS map. The GIS map has been prepared from material provided to ARTC by an external source and ARTC has not taken any steps to verify the completeness, accuracy or suitability of that material. ARTC will not be responsible for any loss or damage suffered as a result of any person whatsoever placing reliance upon the information contained within this GIS map.

Paper: A3
Date: 16/08/2019
Author: IRDJV
Scale: 1:30,000

Data Sources: WSP/Mott MacDonald, LPI, Geoscience Australia, ARTC, DIRE



NARRABRI TO NORTH STAR

Appendix A
Noise Sensitive Receivers

Sheet 12 of 16

LEGEND

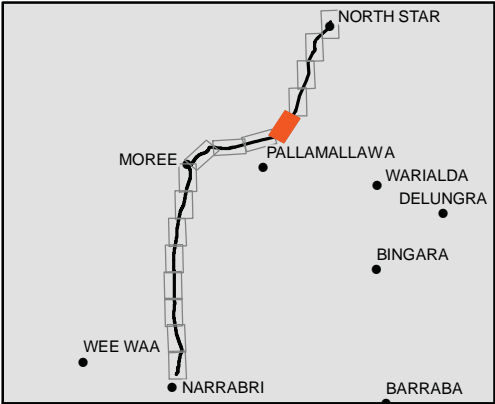
- Townships
- Highway
- Local Road
- Track
 - Existing Rail Network
 - Proposed Rail Separation
- Watercourse
- Phase 3 Track Alignment

Cadastre

Rail Receivers

- Education
- Hospital Ward
- Active Recreation
- Passive Recreation
- Residential
- Place of Worship

NOT FOR PUBLICATION. FOR
CONSULTATION PURPOSES ONLY.



Coordinate System: GDA 1994 MGA Zone 55

ARTC makes no representation or warranty and assumes no duty of care or other responsibility to any party as to the completeness, accuracy or suitability of the information contained in this GIS map. The GIS map has been prepared from material provided to ARTC by an external source and ARTC has not taken any steps to verify the completeness, accuracy or suitability of that material. ARTC will not be responsible for any loss or damage suffered as a result of any person whatsoever placing reliance upon the information contained within this GIS map.

Paper: A3
Date: 16/08/2019
Author: IRDJV

Scale: 1:30,000

Data Sources: WSP/Mott MacDonald, LPI, Geoscience Australia, ARTC, DIRE



NARRABRI TO NORTH STAR

Appendix A
Noise Sensitive Receivers

Sheet 13 of 16

LEGEND

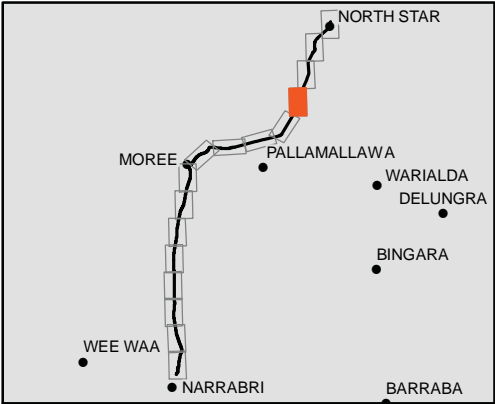
- Townships
- Highway
- Local Road
- Track
- Existing Rail Network
- Proposed Rail Separation
- Watercourse
- Phase 3 Track Alignment

Cadastre

Rail Receivers

- Education
- Hospital Ward
- Active Recreation
- Passive Recreation
- Residential
- Place of Worship

NOT FOR PUBLICATION. FOR
CONSULTATION PURPOSES ONLY.



Coordinate System: GDA 1994 MGA Zone 55

ARTC makes no representation or warranty and assumes no duty of care or other responsibility to any party as to the completeness, accuracy or suitability of the information contained in this GIS map. The GIS map has been prepared from material provided to ARTC by an external source and ARTC has not taken any steps to verify the completeness, accuracy or suitability of that material. ARTC will not be responsible for any loss or damage suffered as a result of any person whatsoever placing reliance upon the information contained within this GIS map.

Paper: A3
Date: 16/08/2019
Author: IRDJV
Scale: 1:30,000

Data Sources: WSP/Mott MacDonald, LPI, Geoscience Australia, ARTC, DIRE



NARRABRI TO NORTH STAR

Appendix A
Noise Sensitive Receivers

Sheet 14 of 16

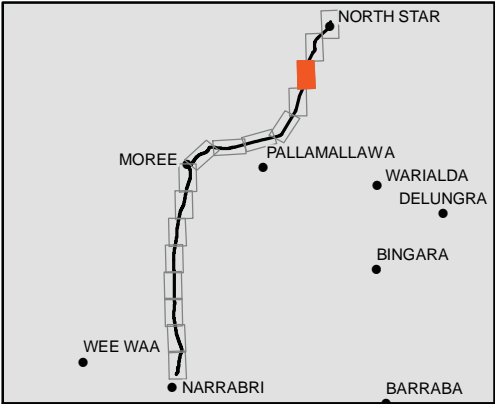
LEGEND

- Townships
- Highway
- Local Road
- - - Track
- Existing Rail Network
- - - Proposed Rail Separation
- Watercourse
- Phase 3 Track Alignment
- Cadastre

Rail Receivers

- Education
- Hospital Ward
- Active Recreation
- Passive Recreation
- Residential
- Place of Worship

NOT FOR PUBLICATION. FOR CONSULTATION PURPOSES ONLY.

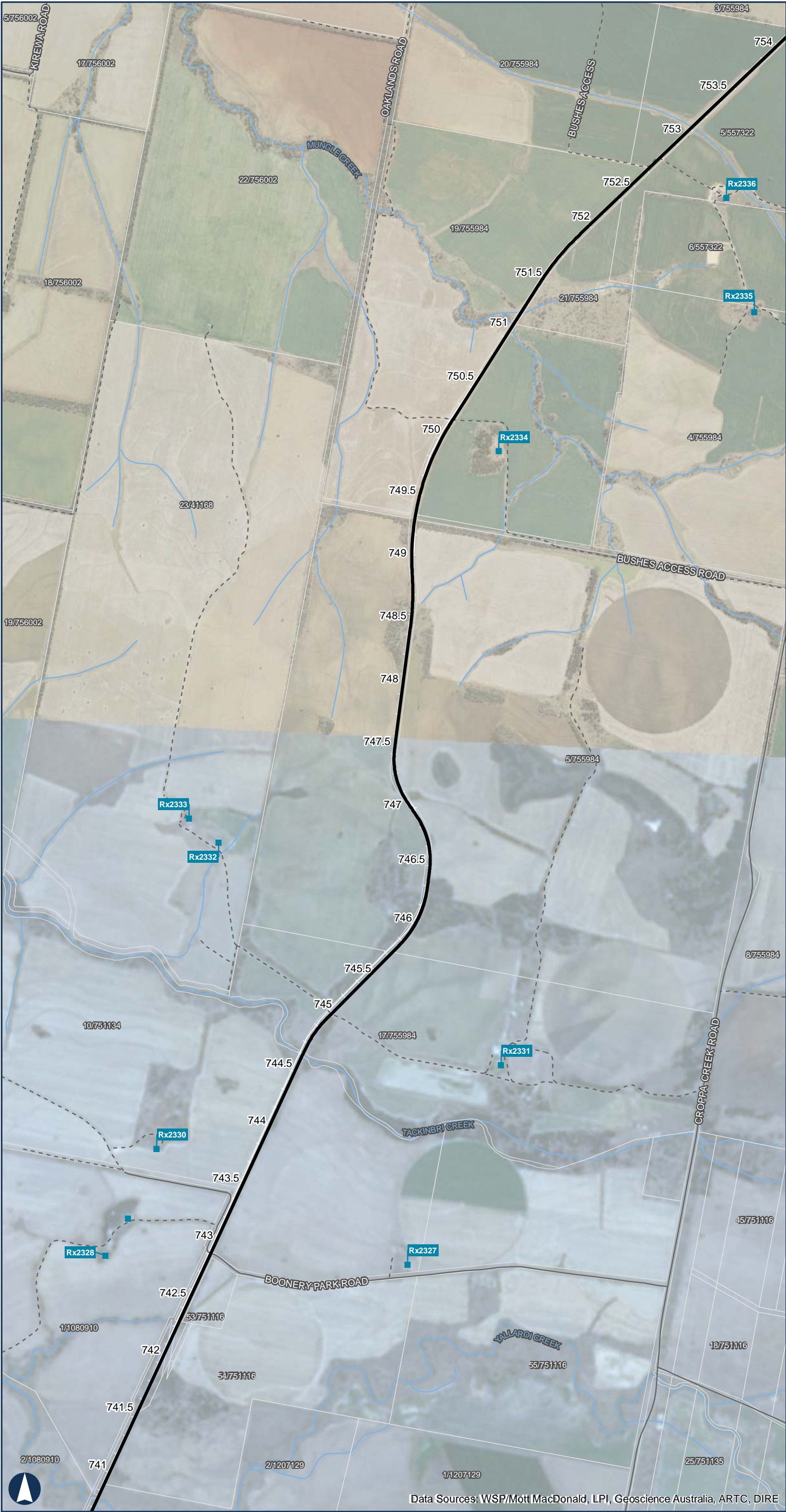


Coordinate System: GDA 1994 MGA Zone 55

ARTC makes no representation or warranty and assumes no duty of care or other responsibility to any party as to the completeness, accuracy or suitability of the information contained in this GIS map. The GIS map has been prepared from material provided to ARTC by an external source and ARTC has not taken any steps to verify the completeness, accuracy or suitability of that material. ARTC will not be responsible for any loss or damage suffered as a result of any person whatsoever placing reliance upon the information contained within this GIS map.

Paper: A3
Date: 16/08/2019
Author: IRDJV
Scale: 1:30,000

Data Sources: WSP/Mott MacDonald, LPI, Geoscience Australia, ARTC, DIRE



NARRABRI TO NORTH STAR

Appendix A
Noise Sensitive Receivers

Sheet 15 of 16

LEGEND

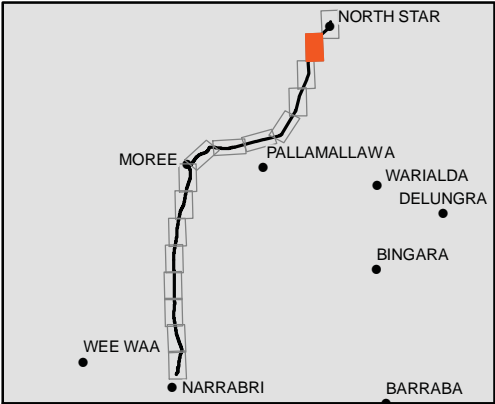
- Townships
- Highway
- Local Road
- Track
- Existing Rail Network
- Proposed Rail Separation
- Watercourse
- Phase 3 Track Alignment

Cadastre

Rail Receivers

- Education
- Hospital Ward
- Active Recreation
- Passive Recreation
- Residential
- Place of Worship

NOT FOR PUBLICATION. FOR
CONSULTATION PURPOSES ONLY.

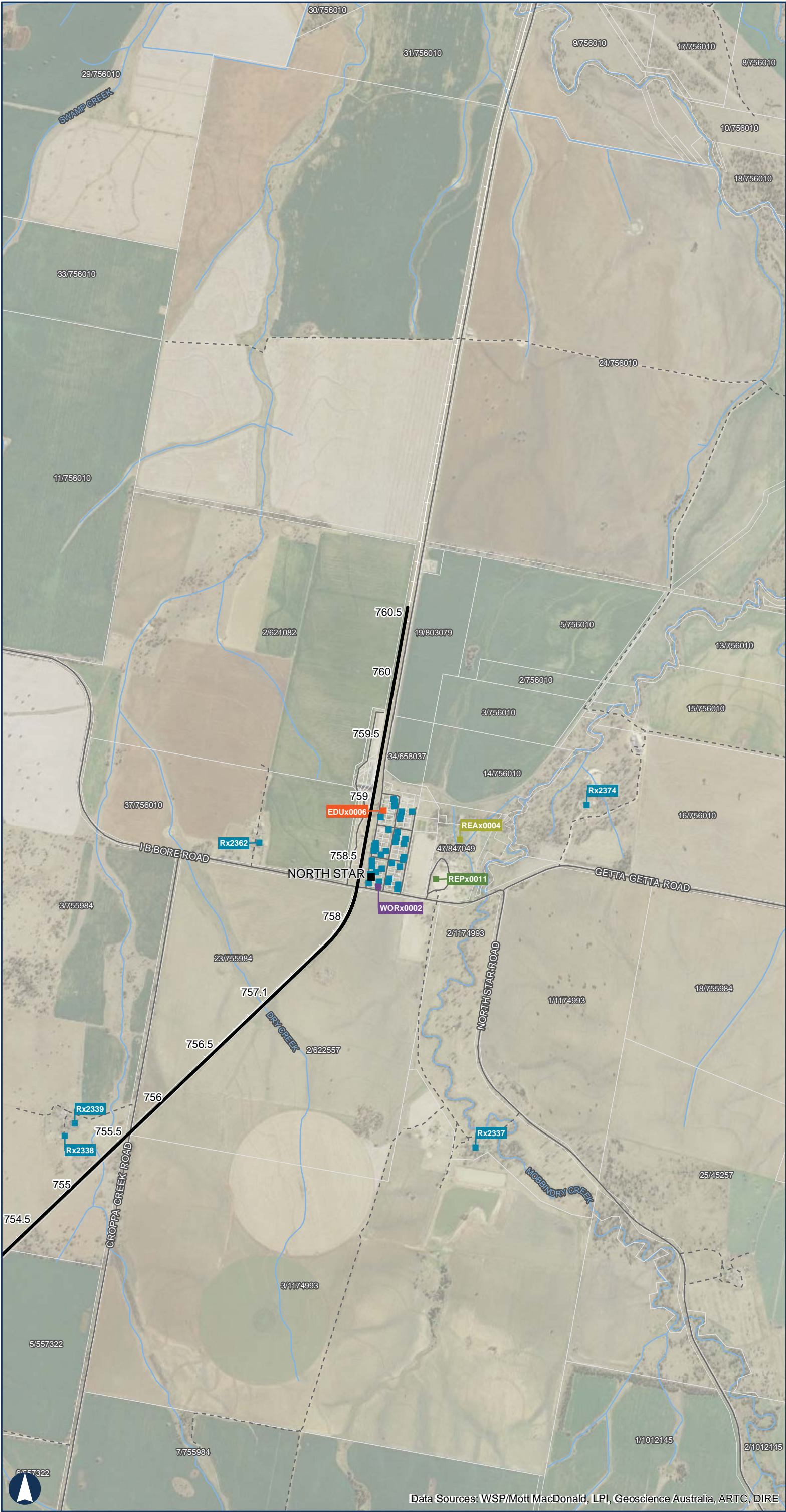


Coordinate System: GDA 1994 MGA Zone 55

ARTC makes no representation or warranty and assumes no duty of care or other responsibility to any party as to the completeness, accuracy or suitability of the information contained in this GIS map. The GIS map has been prepared from material provided to ARTC by an external source and ARTC has not taken any steps to verify the completeness, accuracy or suitability of that material. ARTC will not be responsible for any loss or damage suffered as a result of any person whatsoever placing reliance upon the information contained within this GIS map.

Paper: A3
Date: 16/08/2019
Author: IRDJV
Scale: 1:30,000

Data Sources: WSP/Mott MacDonald, LPI, Geoscience Australia, ARTC, DIRE



NARRABRI TO NORTH STAR

Appendix A
Noise Sensitive Receivers

Sheet 16 of 16

LEGEND

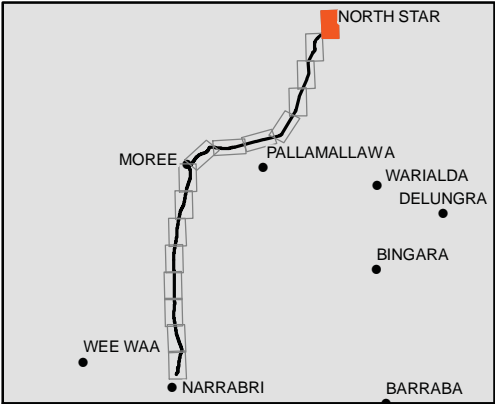
- Townships
- Highway
- Local Road
- Track
- Existing Rail Network
- Proposed Rail Separation
- Watercourse
- Phase 3 Track Alignment

Cadastral

Rail Receivers

- Education
- Hospital Ward
- Active Recreation
- Passive Recreation
- Residential
- Place of Worship

NOT FOR PUBLICATION. FOR
CONSULTATION PURPOSES ONLY.

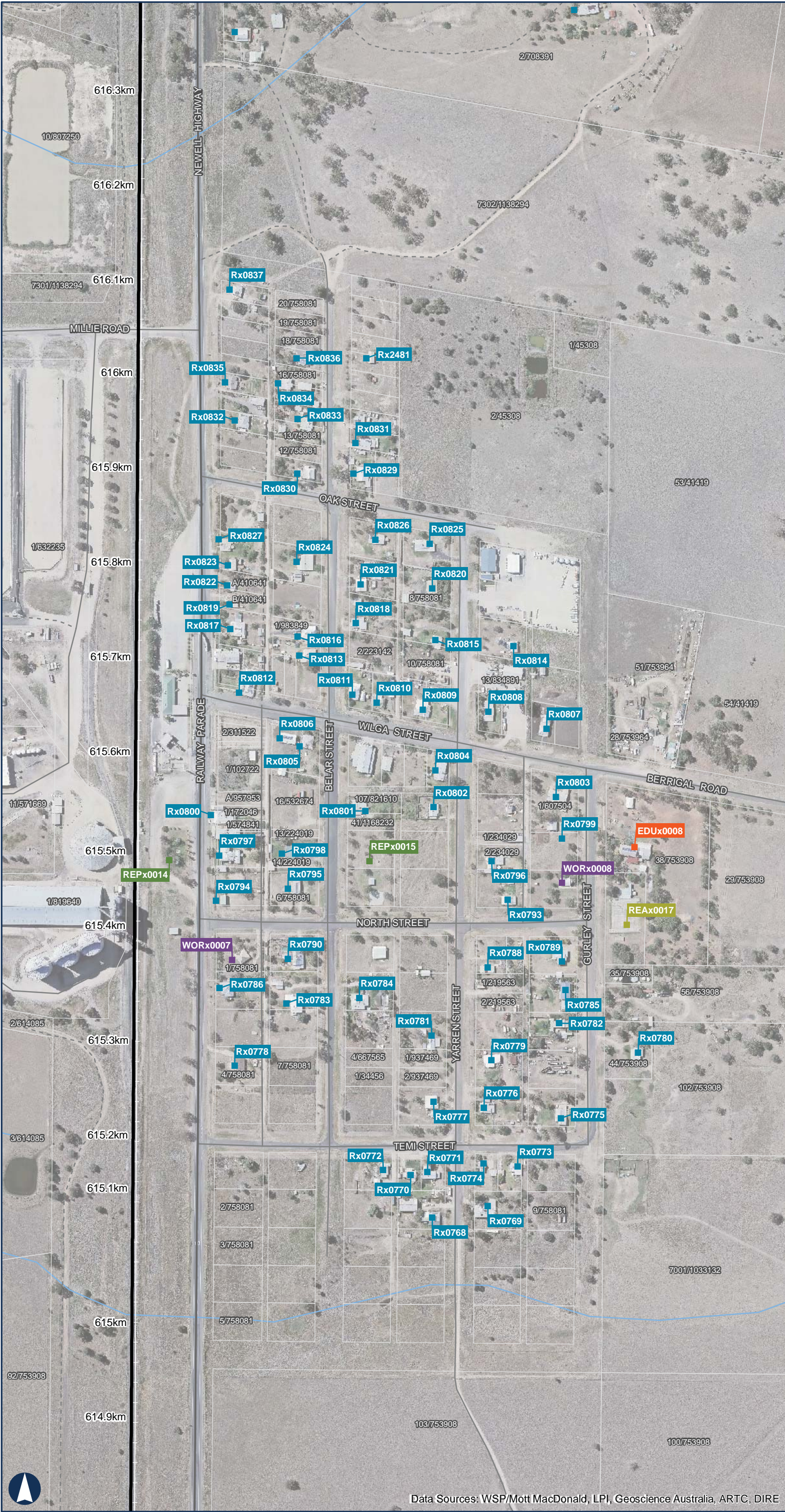


Coordinate System: GDA 1994 MGA Zone 55

ARTC makes no representation or warranty and assumes no duty of care or other responsibility to any party as to the completeness, accuracy or suitability of the information contained in this GIS map. The GIS map has been prepared from material provided to ARTC by an external source and ARTC has not taken any steps to verify the completeness, accuracy or suitability of that material. ARTC will not be responsible for any loss or damage suffered as a result of any person whatsoever placing reliance upon the information contained within this GIS map.

Paper: A3
Date: 16/08/2019
Author: IRDJV
Scale: 1:30,000

Data Sources: WSP/Mott MacDonald, LPI, Geoscience Australia, ARTC, DIRE



NARRABRI TO NORTH STAR

Appendix A
Noise Sensitive Receivers - Bellata
Sheet 1 of 1

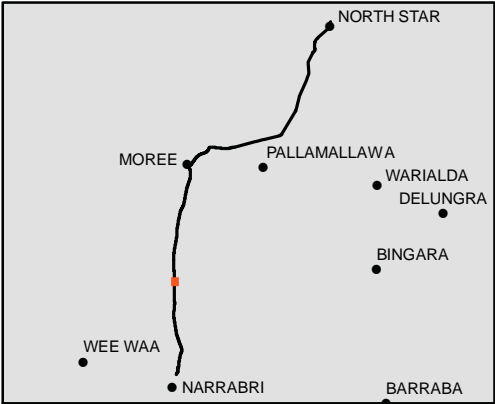
LEGEND

- Townships
- Highway
- Local Road
- Track
- Existing Rail Network
- - - Proposed Rail Separation
- Watercourse
- Phase 3 Track Alignment
- Cadastre

Rail Receivers

- Education
- Hospital Ward
- Active Recreation
- Passive Recreation
- Residential
- Place of Worship

NOT FOR PUBLICATION. FOR CONSULTATION PURPOSES ONLY.

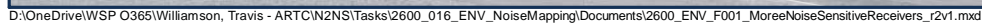


Coordinate System: GDA 1994 MGA Zone 55

ARTC makes no representation or warranty and assumes no duty of care or other responsibility to any party as to the completeness, accuracy or suitability of the information contained in this GIS map. The GIS map has been prepared from material provided to ARTC by an external source and ARTC has not taken any steps to verify the completeness, accuracy or suitability of that material. ARTC will not be responsible for any loss or damage suffered as a result of any person whatsoever placing reliance upon the information contained within this GIS map.

Paper: A3
Date: 16/08/2019
Author: IRDJV
Scale: 1:4,000

Data Sources: WSP/Mott MacDonald, LPI, Geoscience Australia, ARTC, DIRE



Scale: 1:2,500



NARRABRI TO NORTH STAR

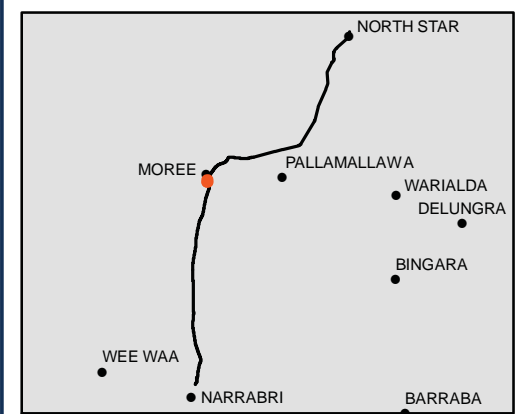
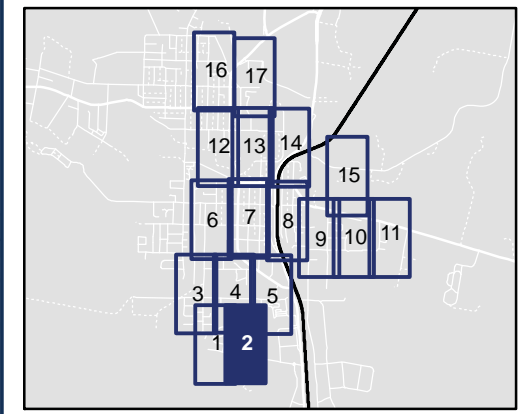
Appendix A
Noise Sensitive Receivers - Moree

Sheet 2 of 17

LEGEND

- Townships
- Highway
- Local Road
- Track
- Existing Rail Network
- Proposed Rail Separation
- Watercourse
- Phase 3 Track Alignment
- Cadastre
- Rail Receivers
 - Education
 - Hospital Ward
 - Active Recreation
 - Passive Recreation
 - Residential
 - Place of Worship

NOT FOR PUBLICATION. FOR CONSULTATION PURPOSES ONLY.



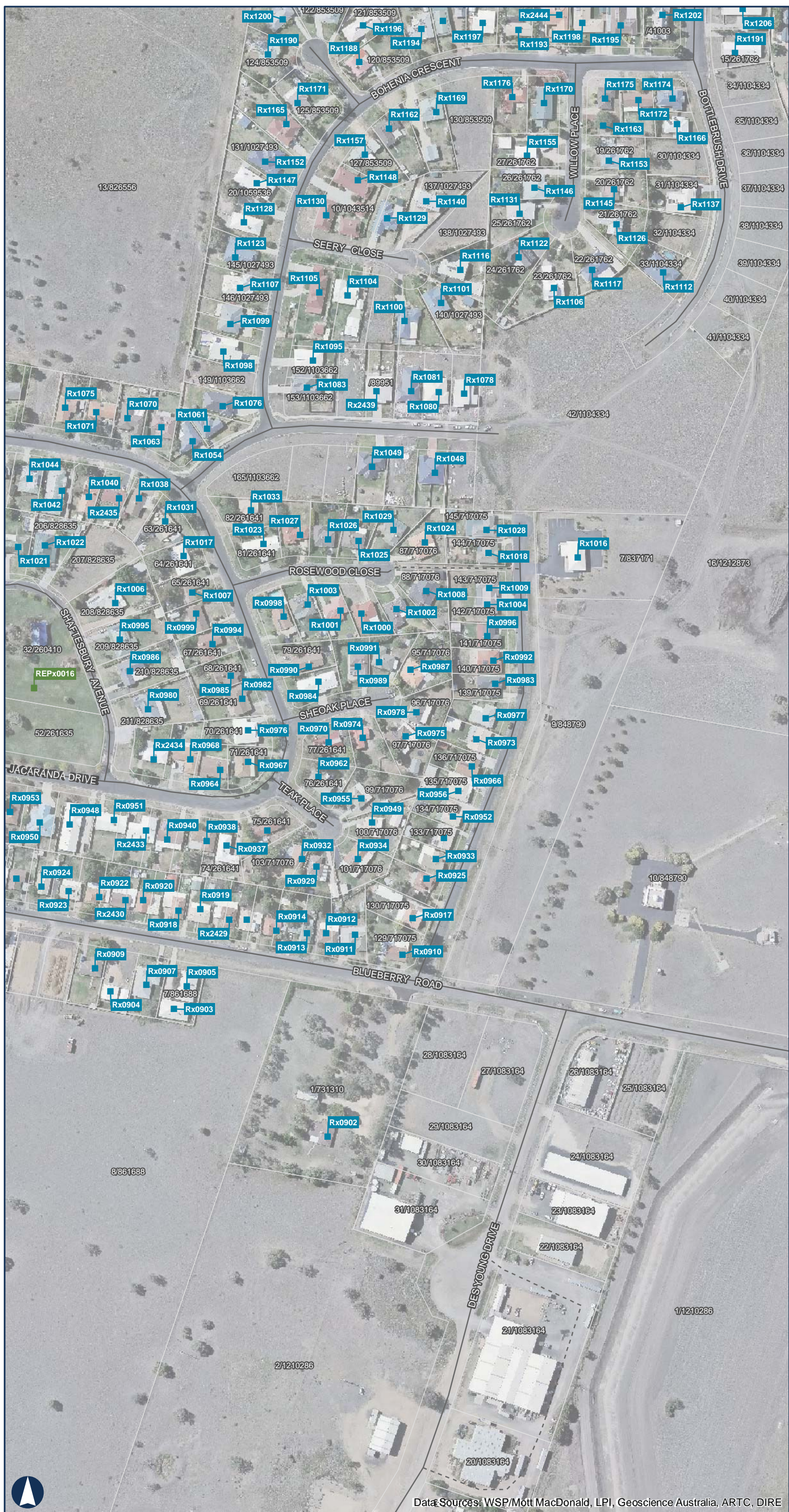
150 Meters

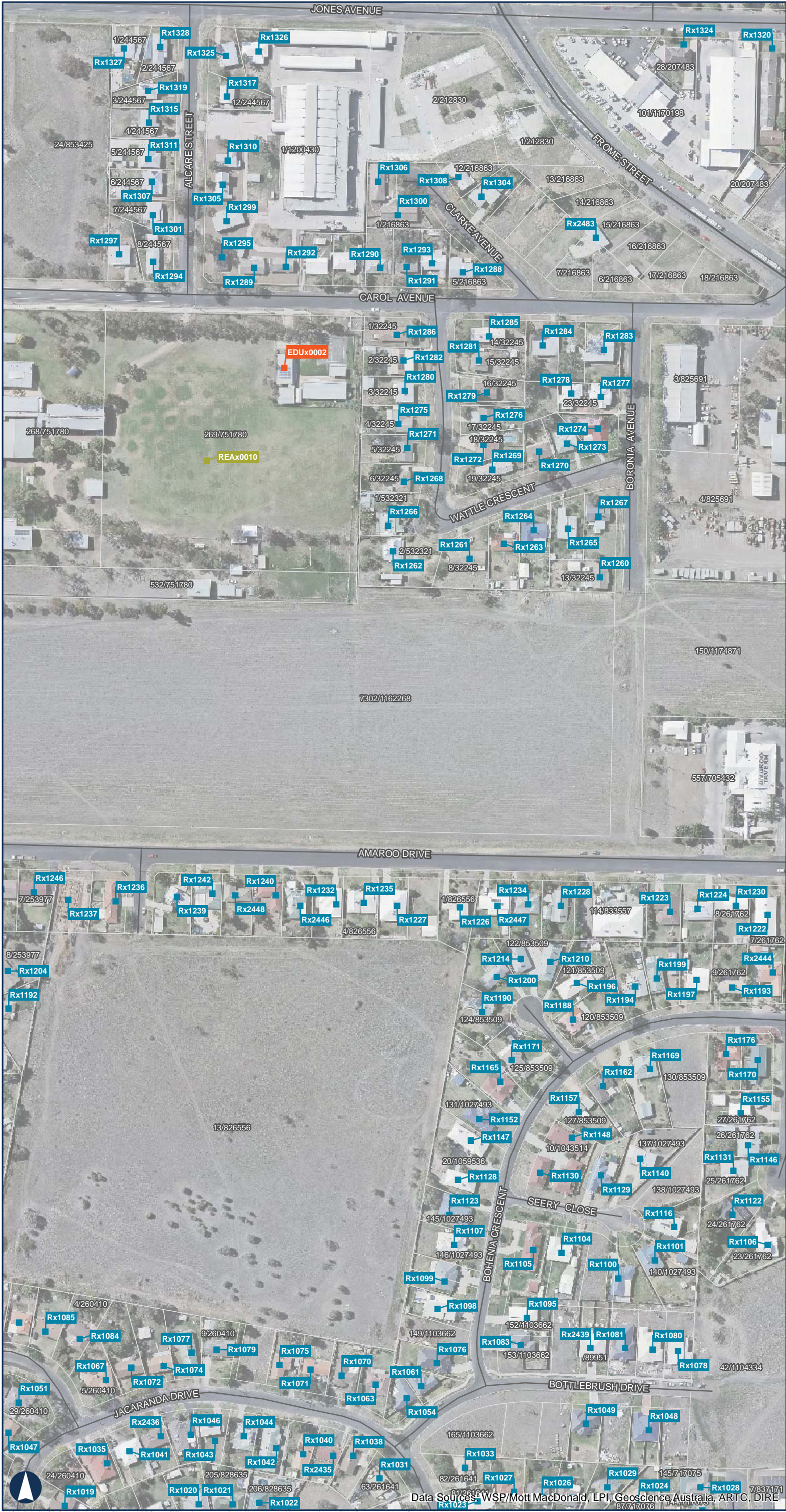
Coordinate System: GDA 1994 MGA Zone 55

ARTC makes no representation or warranty and assumes no duty of care or other responsibility to any party as to the completeness, accuracy or suitability of the information contained in this GIS map. The GIS map has been prepared from material provided to ARTC by an external source and ARTC has not taken any steps to verify the completeness, accuracy or suitability of that material. ARTC will not be responsible for any loss or damage suffered as a result of any person whatsoever placing reliance upon the information contained within this GIS map.

Paper: A3
Date: 16/08/2019
Author: IRDJV

Scale: 1:2,500





NARRABRI TO NORTH STAR

Appendix A
Noise Sensitive Receivers - Moree

Sheet 4 of 17

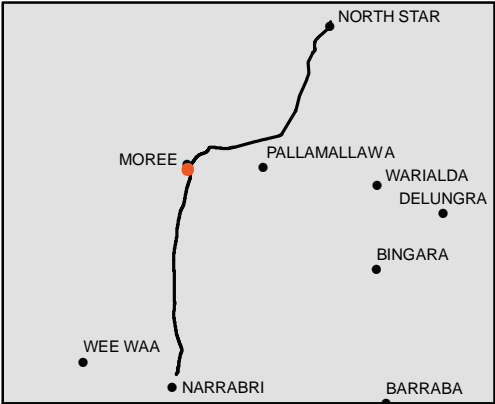
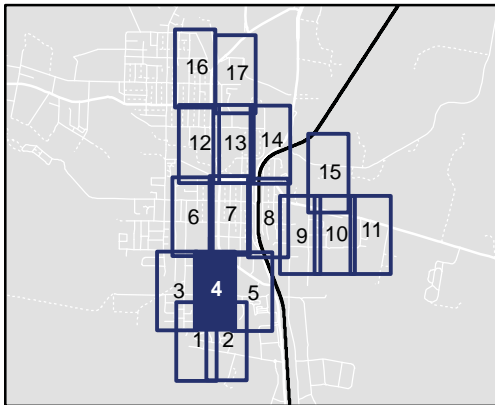
LEGEND

- Townships
- Highway
- Local Road
- Track
- Existing Rail Network
- - - Proposed Rail Separation
- Watercourse
- Phase 3 Track Alignment

Rail Receivers

- Education
- Hospital Ward
- Active Recreation
- Passive Recreation
- Residential
- Place of Worship

NOT FOR PUBLICATION. FOR CONSULTATION PURPOSES ONLY.



Coordinate System: GDA 1994 MGA Zone 55

ARTC makes no representation or warranty and assumes no duty of care or other responsibility to any party as to the completeness, accuracy or suitability of the information contained in this GIS map. The GIS map has been prepared from material provided to ARTC by an external source and ARTC has not taken any steps to verify the completeness, accuracy or suitability of that material. ARTC will not be responsible for any loss or damage suffered as a result of any person whatsoever placing reliance upon the information contained within this GIS map.

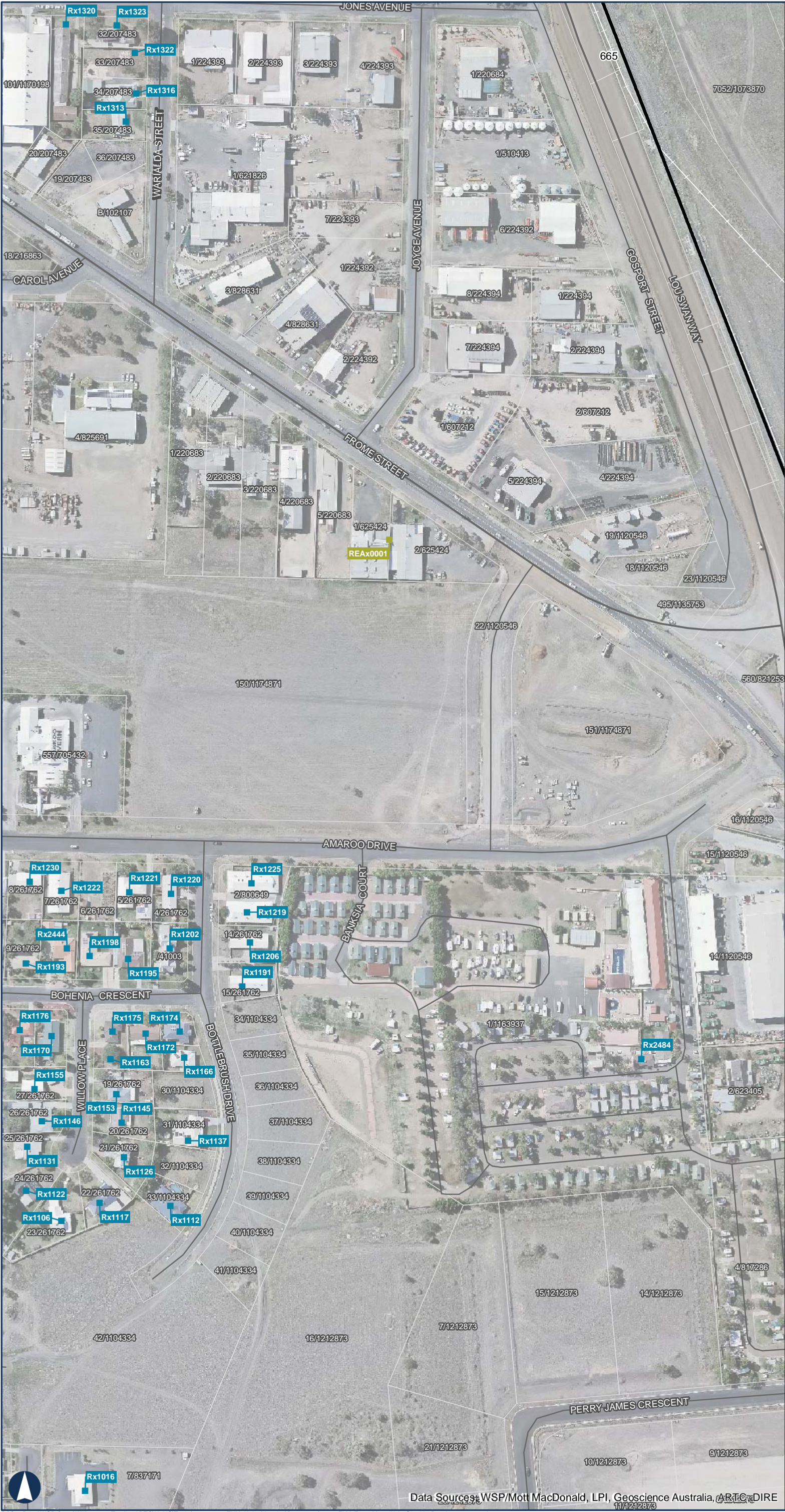
Paper: A3

Scale: 1:2,500

Date: 16/08/2019

Author: IRDJV

Data Sources: WSP/Mott MacDonald, LPI, Geoscience Australia, ARTC, DIRE



NARRABRI TO NORTH STAR

Appendix A
Noise Sensitive Receivers - Moree

Sheet 5 of 17

LEGEND

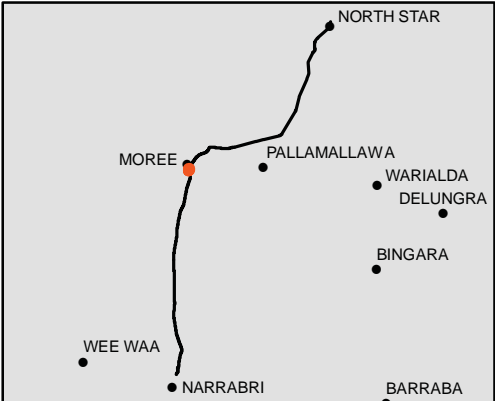
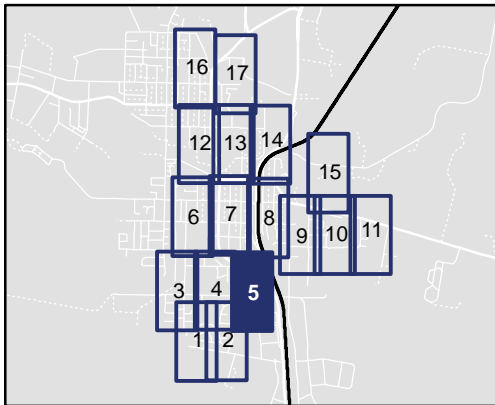
- Townships
- Highway
- Local Road
- Track
- Existing Rail Network
- - Proposed Rail Separation
- Watercourse
- Phase 3 Track Alignment

Cadastre

Rail Receivers

- Education
- Hospital Ward
- Active Recreation
- Passive Recreation
- Residential
- Place of Worship

NOT FOR PUBLICATION. FOR CONSULTATION PURPOSES ONLY.



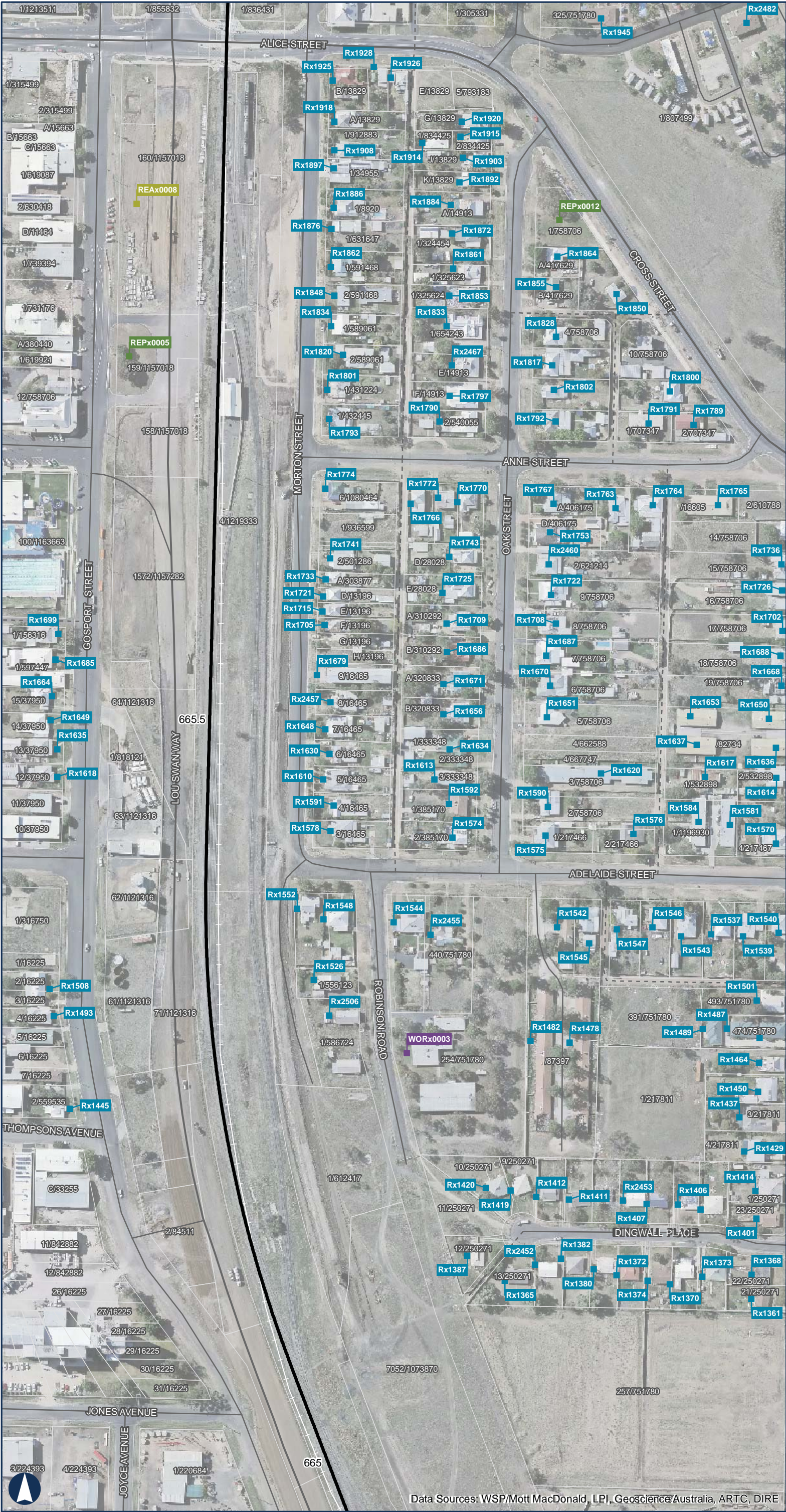
Coordinate System: GDA 1994 MGA Zone 55

ARTC makes no representation or warranty and assumes no duty of care or other responsibility to any party as to the completeness, accuracy or suitability of the information contained in this GIS map. The GIS map has been prepared from material provided to ARTC by an external source and ARTC has not taken any steps to verify the completeness, accuracy or suitability of that material. ARTC will not be responsible for any loss or damage suffered as a result of any person whatsoever placing reliance upon the information contained within this GIS map.

Paper: A3
Date: 16/08/2019
Author: IRDJV
Scale: 1:2,500



Author: IRDJV



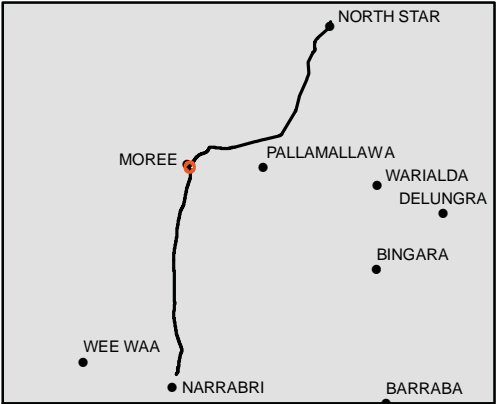
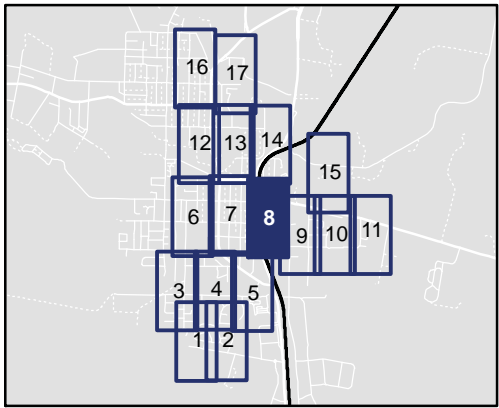
NARRABRI TO NORTH STAR

Appendix A
Noise Sensitive Receivers - Moree
Sheet 8 of 17

LEGEND

- Townships
- Highway
- Local Road
- Track
- Existing Rail Network
- Proposed Rail Separation
- Watercourse
- Phase 3 Track Alignment
- Cadastre
- Rail Receivers
 - Education
 - Hospital Ward
 - Active Recreation
 - Passive Recreation
 - Residential
 - Place of Worship

NOT FOR PUBLICATION. FOR CONSULTATION PURPOSES ONLY.



Coordinate System: GDA 1994 MGA Zone 55

ARTC makes no representation or warranty and assumes no duty of care or other responsibility to any party as to the completeness, accuracy or suitability of the information contained in this GIS map. The GIS map has been prepared from material provided to ARTC by an external source and ARTC has not taken any steps to verify the completeness, accuracy or suitability of that material. ARTC will not be responsible for any loss or damage suffered as a result of any person whatsoever placing reliance upon the information contained within this GIS map.

Paper: A3
Date: 16/08/2019
Author: IRDJV
Scale: 1:2,500

Data Sources: WSP/Mott MacDonald, LPI, GeoScience Australia, ARTC, DIRE



Appendix A


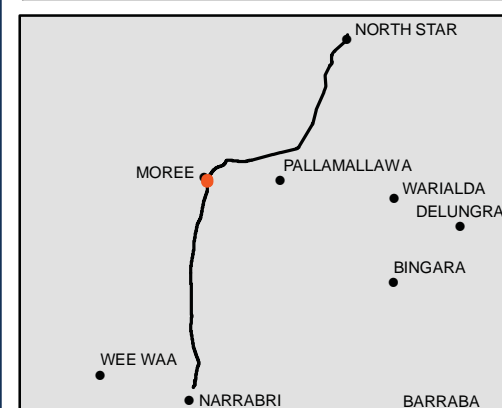
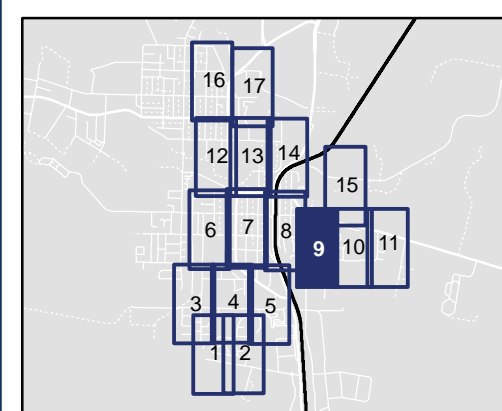
Noise Sensitive Receivers - Moree

Sheet 9 of 17

■ Townships
 — Highway
 — Local Road
 - - - Track
 Existing Rail Network
 - - - Proposed Rail Separation
 Watercourse
 Phase 3 Track Alignment

- Education
- Hospital Ward
- Active Recreation
- Passive Recreation
- Residential
- Place of Worship

**NOT FOR PUBLICATION. FOR
CONSULTATION PURPOSES ONLY.**

 150 Meters

Coordinate System: GDA 1994 MGA Zone 55

ARTC makes no representation or warranty and assumes no duty of care or other responsibility to any party as to the completeness, accuracy or suitability of the information contained in this GIS map. The GIS map has been prepared from material provided to ARTC by an external source and ARTC has not taken any steps to verify the completeness, accuracy or suitability of that material.

ARTC will not be responsible for any loss or damage suffered as a result of any person whatsoever placing reliance upon the information contained within this GIS map.

Paper: A3

Scale: 1:2,500

Date: 16/08/2019

Author: IRDJV

Appendix A

Noise Sensitive Receivers - Moree

Sheet 10 of 17


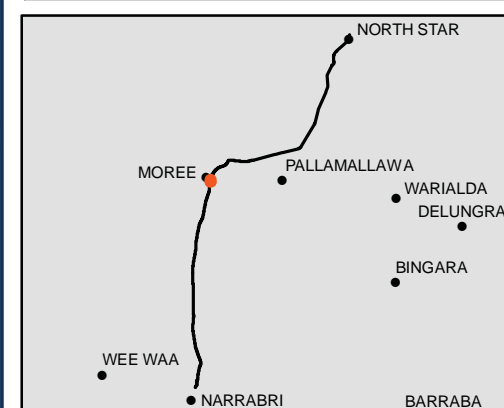
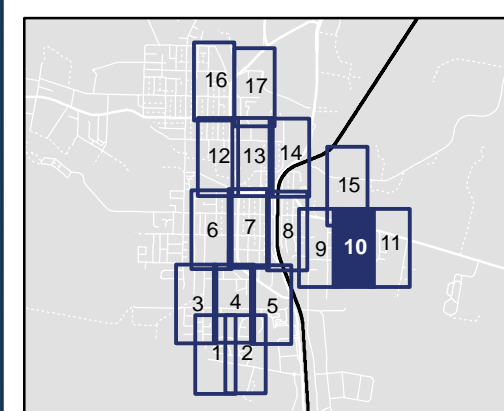
LEGEND

- Townships
 — Highway
 — Local Road
 - - - Track
 Existing Rail Network
 - - - Proposed Rail Separation
 Watercourse
 Phase 3 Track Alignment

Rail Receivers

- Education
- Hospital Ward
- Active Recreation
- Passive Recreation
- Residential
- Place of Worship

NOT FOR PUBLICATION. FOR CONSULTATION PURPOSES ONLY.



150 Meters

Coordinate System: GDA 1994 MGA Zone 55

ARTC makes no representation or warranty and assumes no duty of care or other responsibility to any party as to the completeness, accuracy or suitability of the information contained in this GIS map. The GIS map has been prepared from material provided to ARTC by an external source and ARTC has not taken any steps to verify the completeness, accuracy or suitability of that material. ARTC will not be responsible for any loss or damage suffered as a result of any person whatsoever placing reliance upon the information contained within this GIS map.

Paper: A3

Scale: 1:2.500

Date: 16/08/2019

Author: IRDJV

Data Sources: WSP/Mott MacDonald, LPI, Geoscience Australia, ARTC, DIRE



NARRABRI TO NORTH STAR

Appendix A
Noise Sensitive Receivers - Moree
Sheet 12 of 17

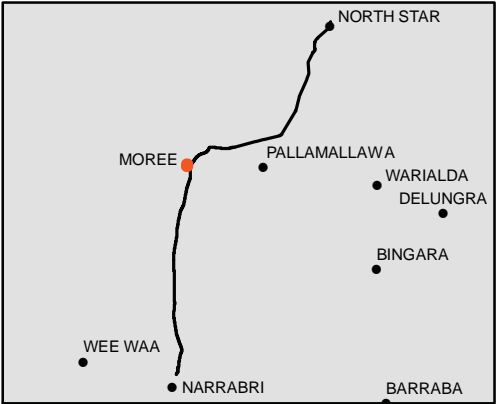
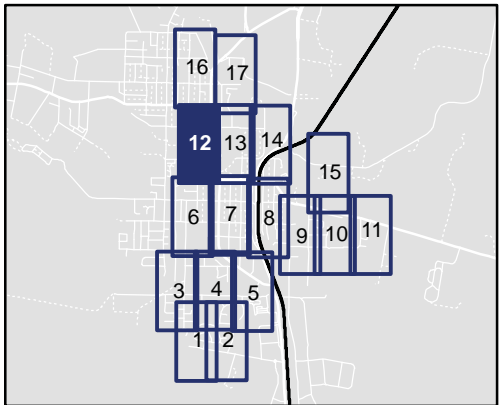
LEGEND

- Townships
- Highway
- Local Road
- Track
- Existing Rail Network
- Proposed Rail Separation
- Watercourse
- Phase 3 Track Alignment

Rail Receivers

- Education
- Hospital Ward
- Active Recreation
- Passive Recreation
- Residential
- Place of Worship

NOT FOR PUBLICATION. FOR CONSULTATION PURPOSES ONLY.



150 Meters

Coordinate System: GDA 1994 MGA Zone 55

ARTC makes no representation or warranty and assumes no duty of care or other responsibility to any party as to the completeness, accuracy or suitability of the information contained in this GIS map. The GIS map has been prepared from material provided to ARTC by an external source and ARTC has not taken any steps to verify the completeness, accuracy or suitability of that material. ARTC will not be responsible for any loss or damage suffered as a result of any person whatsoever placing reliance upon the information contained within this GIS map.

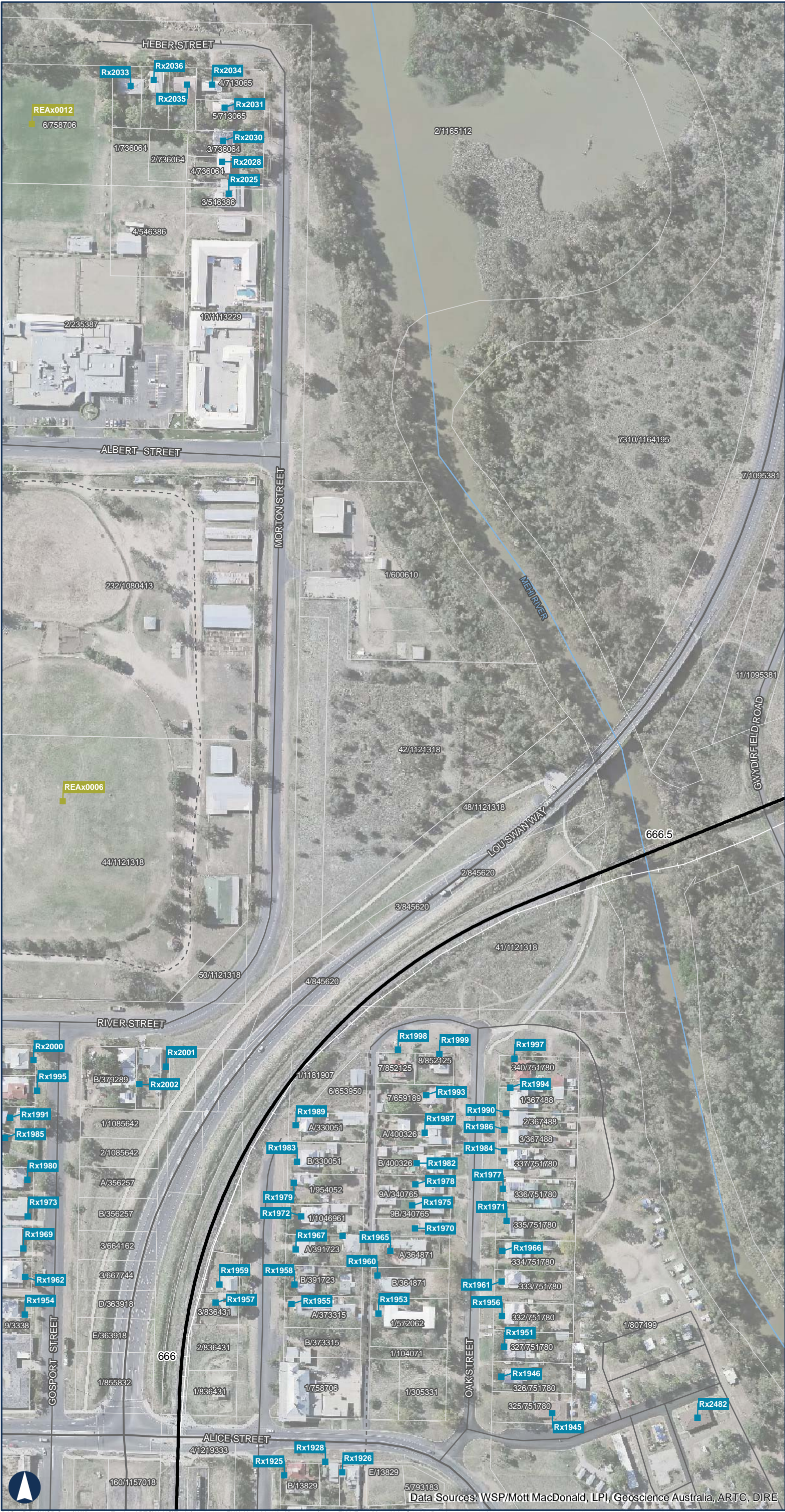
Paper: A3

Date: 16/08/2019

Author: IRDJV

Scale: 1:2,500

Data Sources: WSP/Mott MacDonald, LPI, Geoscience Australia, ARTC, DIRE



NARRABRI TO NORTH STAR

Appendix A
Noise Sensitive Receivers - Moree

Sheet 14 of 17

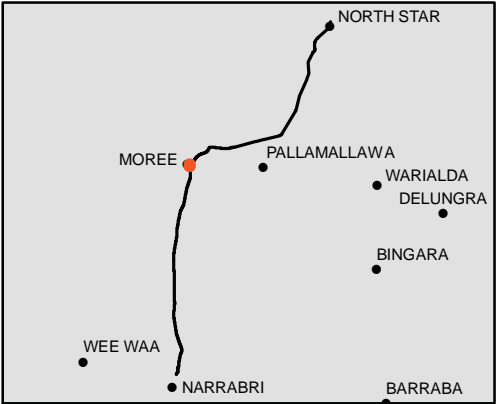
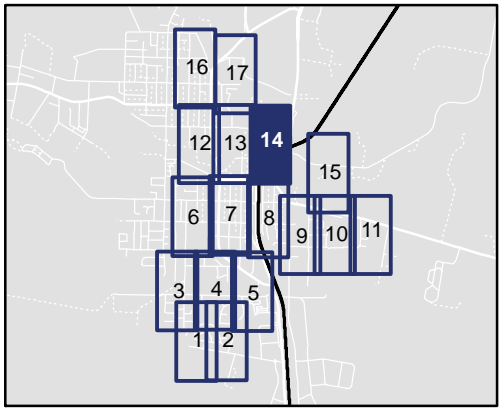
LEGEND

- Townships
- Highway
- Local Road
- - - Track
- Existing Rail Network
- - - Proposed Rail Separation
- Watercourse
- Phase 3 Track Alignment
- Cadastre

Rail Receivers

- Education
- Hospital Ward
- Active Recreation
- Passive Recreation
- Residential
- Place of Worship

NOT FOR PUBLICATION. FOR
CONSULTATION PURPOSES ONLY.



Coordinate System: GDA 1994 MGA Zone 55

ARTC makes no representation or warranty and assumes no duty of care or other responsibility to any party as to the completeness, accuracy or suitability of the information contained in this GIS map. The GIS map has been prepared from material provided to ARTC by an external source and ARTC has not taken any steps to verify the completeness, accuracy or suitability of that material. ARTC will not be responsible for any loss or damage suffered as a result of any person whatsoever placing reliance upon the information contained within this GIS map.

Paper: A3
Date: 16/08/2019
Author: IRDJV
Scale: 1:2,500

Data Sources: WSP/Mott MacDonald, LPI, Geoscience Australia, ARTC, DIRE



NARRABRI TO NORTH STAR

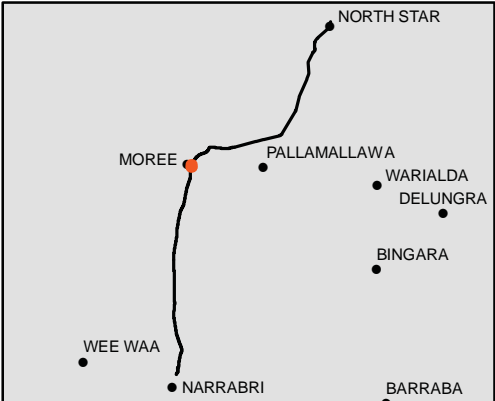
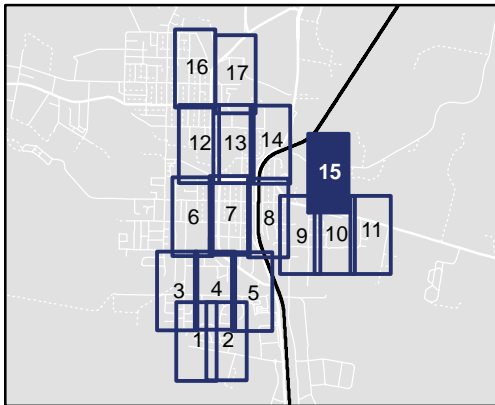
Appendix A
Noise Sensitive Receivers - Moree

Sheet 15 of 17

LEGEND

- Townships
- Highway
- Local Road
- Track
- Existing Rail Network
- Proposed Rail Separation
- Watercourse
- Phase 3 Track Alignment
- Cadastre
- Rail Receivers**
 - Education
 - Hospital Ward
 - Active Recreation
 - Passive Recreation
 - Residential
 - Place of Worship

NOT FOR PUBLICATION. FOR CONSULTATION PURPOSES ONLY.



150 Meters

Coordinate System: GDA 1994 MGA Zone 55

ARTC makes no representation or warranty and assumes no duty of care or other responsibility to any party as to the completeness, accuracy or suitability of the information contained in this GIS map. The GIS map has been prepared from material provided to ARTC by an external source and ARTC has not taken any steps to verify the completeness, accuracy or suitability of that material. ARTC will not be responsible for any loss or damage suffered as a result of any person whatsoever placing reliance upon the information contained within this GIS map.

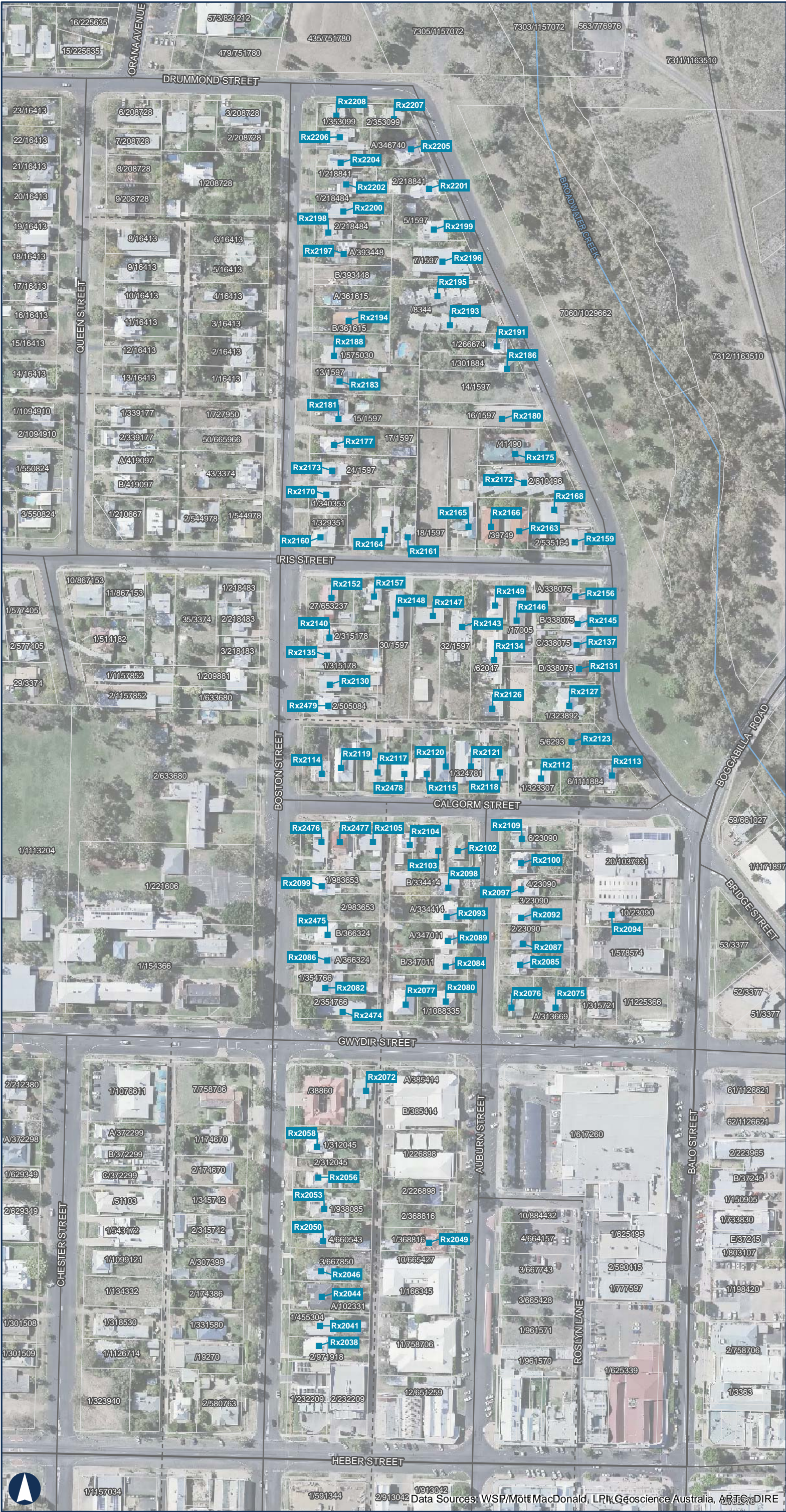
Paper: A3

Date: 16/08/2019

Author: IRDJV

Scale: 1:2,500

Data Sources: WSP/Mott MacDonald, LPI, Geoscience Australia, ARTC, DIRE



NARRABRI TO NORTH STAR

Appendix A Noise Sensitive Receivers - Moree

Sheet 16 of 17

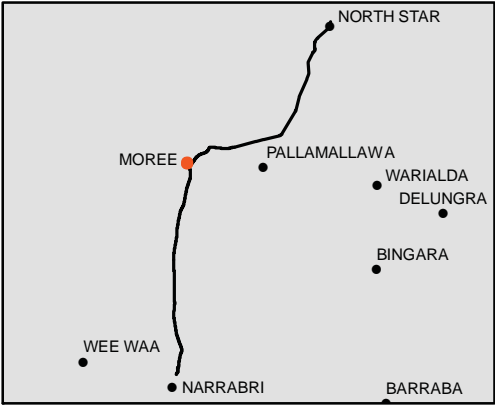
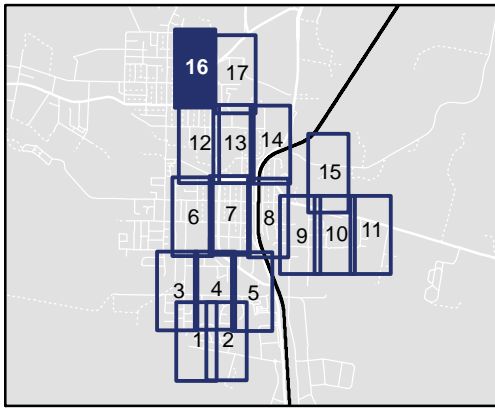
LEGEND

- Townships
- Highway
- Local Road
- Track
- Existing Rail Network
- - - Proposed Rail Separation
- Watercourse
- Phase 3 Track Alignment

Rail Receivers

- Education
- Hospital Ward
- Active Recreation
- Passive Recreation
- Residential
- Place of Worship

NOT FOR PUBLICATION. FOR CONSULTATION PURPOSES ONLY.



150 Meters

Coordinate System: GDA 1994 MGA Zone 55

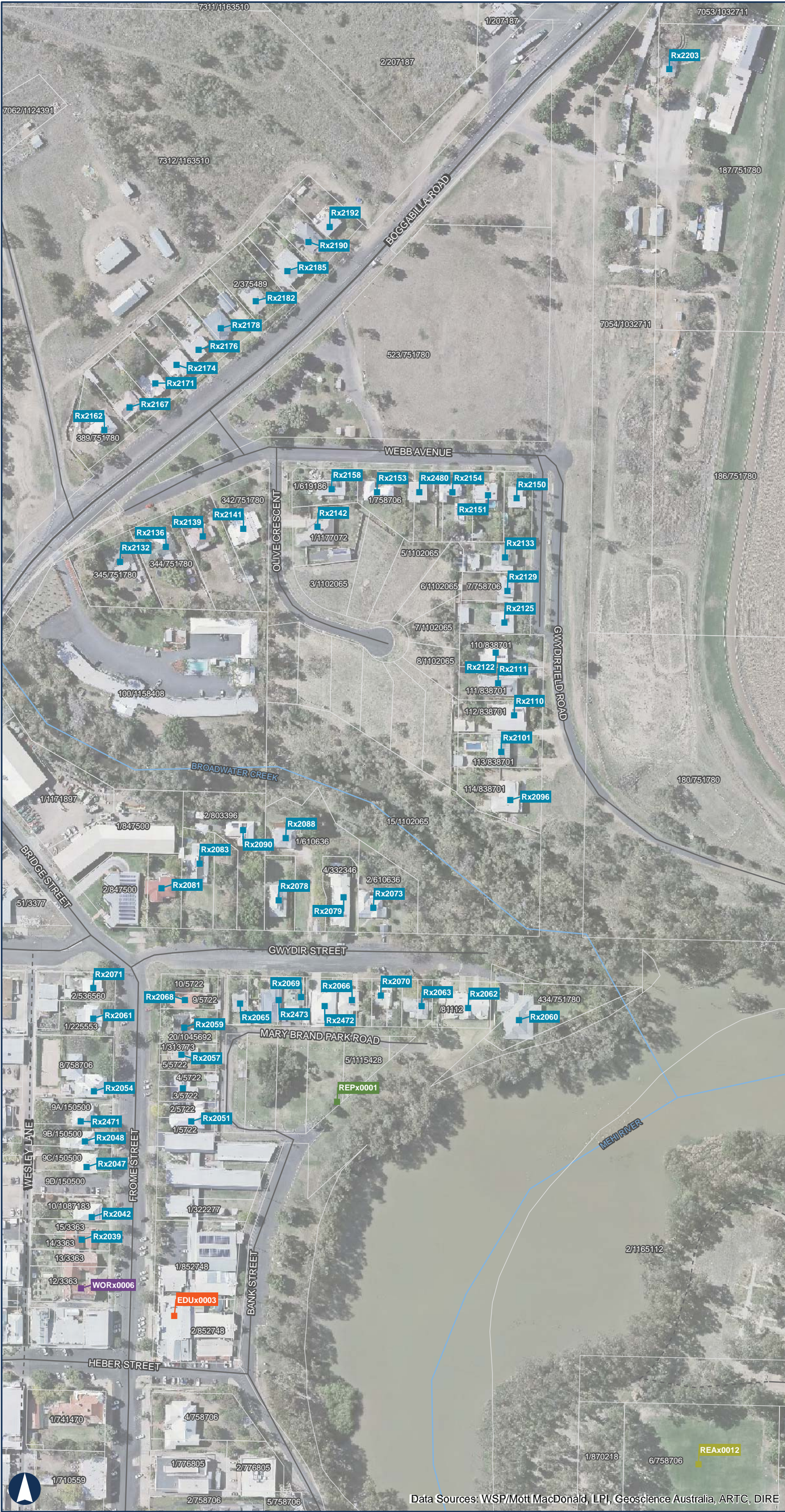
ARTC makes no representation or warranty and assumes no duty of care or other responsibility to any party as to the completeness, accuracy or suitability of the information contained in this GIS map. The GIS map has been prepared from material provided to ARTC by an external source and ARTC has not taken any steps to verify the completeness, accuracy or suitability of that material. ARTC will not be responsible for any loss or damage suffered as a result of any person whatsoever placing reliance upon the information contained within this GIS map.

Paper: A3

Scale: 1:2,500

Date: 16/08/2019

Author: IRDJV



NARRABRI TO NORTH STAR

Appendix A
Noise Sensitive Receivers - Moree

Sheet 17 of 17

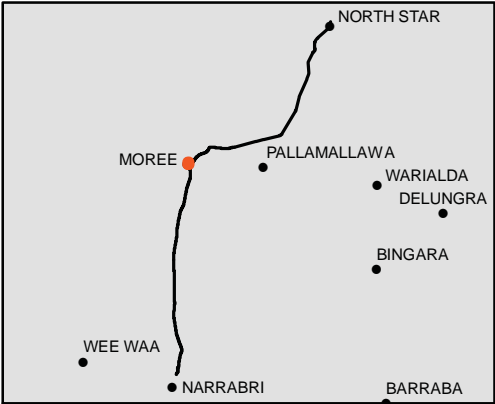
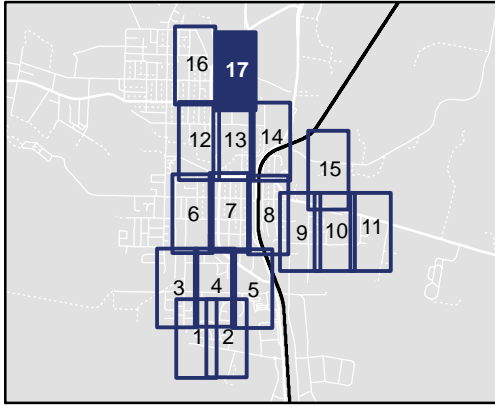
LEGEND

- Townships
- Highway
- Local Road
- Track
 - Existing Rail Network
 - Proposed Rail Separation
- Watercourse
- Phase 3 Track Alignment
- Cadastre

Rail Receivers

- Education
- Hospital Ward
- Active Recreation
- Passive Recreation
- Residential
- Place of Worship

NOT FOR PUBLICATION. FOR CONSULTATION PURPOSES ONLY.



150 Meters

Coordinate System: GDA 1994 MGA Zone 55

ARTC makes no representation or warranty and assumes no duty of care or other responsibility to any party as to the completeness, accuracy or suitability of the information contained in this GIS map. The GIS map has been prepared from material provided to ARTC by an external source and ARTC has not taken any steps to verify the completeness, accuracy or suitability of that material. ARTC will not be responsible for any loss or damage suffered as a result of any person whatsoever placing reliance upon the information contained within this GIS map.

Paper: A3

Date: 16/08/2019

Author: IRDJV

Scale: 1:2,500


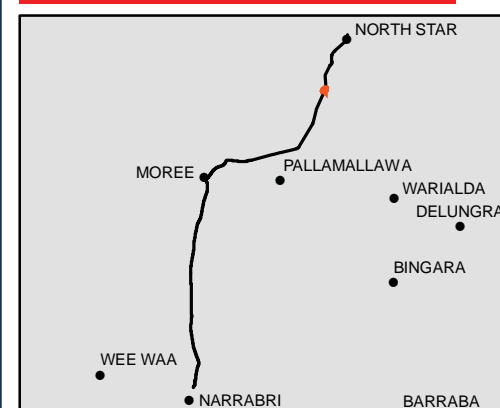
Data Sources: WSP/Mott MacDonald, LPI, Geoscience Australia, ARTC, DIRE

Appendix A
Noise Sensitive Receivers - Croppa Creek
Sheet 1 of 1

■ Townships
 — Highway
 — Local Road
 - - - Track
 Existing Rail Network
 - - - Proposed Rail Separation
 Watercourse
 Phase 3 Track Alignment

- Education
- Hospital Ward
- Active Recreation
- Passive Recreation
- Residential
- Place of Worship

**NOT FOR PUBLICATION. FOR
CONSULTATION PURPOSES ONLY.**



0.3 Km

Coordinate System: GDA 1994 MGA Zone 55

ARTC makes no representation or warranty and assumes no duty of care or other responsibility to any party as to the completeness, accuracy or suitability of the information contained in this GIS map. The GIS map has been prepared from material provided to ARTC by an external source and ARTC has not taken any steps to verify the completeness, accuracy or suitability of that material.

ARTC will not be responsible for any loss or damage suffered as a result of any person whatsoever placing reliance upon the information contained within this GIS map.

Paper: A3

Date: 16/08/2019

Author: IRDJV

Scale: 1:4,000

Appendix A
Noise Sensitive Receivers - North Star
Sheet 1 of 1

■ Townships
 — Highway
 — Local Road
 - - - Track
 Existing Rail Network
 - - - Proposed Rail Separation
 Watercourse
 Phase 3 Track Alignment

- Education
- Hospital Ward
- Active Recreation
- Passive Recreation
- Residential
- Place of Worship



A map of the Moree Plains Irrigation area. A thick black line represents the irrigation route, starting at North Star (marked with a red dot) in the north, passing through Pallamallawa, Moree, and ending at Narrabri (marked with a black dot) in the south. Other locations marked with black dots include Wee Waa, Warialda, Delunggra, Bingara, and Barraba. The map is enclosed in a black rectangular border.

ARTC makes no representation or warranty and assumes no duty of care or other responsibility to any party as to the completeness, accuracy or suitability of the information contained in this GIS map. The GIS map has been prepared from material provided to ARTC by an external source and ARTC has not taken any steps to verify the completeness, accuracy or suitability of that material.

ARTC will not be responsible for any loss or damage suffered as a result of any person whatsoever placing reliance upon the information contained within this GIS map.

Paper: A3
Date: 16/08/2019
Author: JRDJV

Data Sources: WSP/Mott MacDonald, LPI, Geoscience Australia, ARTC, DIRE