

## **Appendix E** – Operational rail noise contours, LAeq





#### LEGEND

- |   |  |   |
|---|--|---|
| <span style="color: green;">●</span> Residential receiver | <span style="color: purple;">●</span> Passive recreation | <span style="color: black;">—</span> The proposal |
| <span style="color: green;">○</span> Active recreation    | <span style="color: purple;">○</span> Religious          | <span style="color: blue;">—</span> Watercourse   |
| <span style="color: red;">●</span> Education              |  | <span style="color: black;">—</span> Road         |

Paper Size A4  
0 75 150 300 450 600  
Metres  
Map Projection: Transverse Mercator  
Horizontal Datum: GDA 1994  
Grid: GDA 1994 MGA Zone 55



Australian Rail Track Corporation  
Inland Rail - Narrabri to North Star

Operational rail noise contours, LAeq  
2020 build

Job Number 22-17916  
Revision 0  
Date 02 Jun 2017

Figure E1- Sheet 1

G:\2217916\GIS\Maps\Deliverables\N2NS\Noise\2217916\_N003\_NNS\_2020\_Leq\_0.mxd

Level 3, GHD Tower, 24 Honeysuckle Drive, Newcastle NSW 2300 T 61 2 4979 9999 F 61 2 4979 9988 E [entmail@ghd.com](mailto:entmail@ghd.com) W [www.ghd.com.au](http://www.ghd.com.au)

© 2017. Whilst every care has been taken to prepare this map, GHD and LPI make no representations or warranties about its accuracy, reliability, completeness or suitability for any particular purpose and cannot accept liability and responsibility of any kind (whether in contract, tort or otherwise) for any expenses, losses, damages and/or costs (including indirect or consequential damage) which are or may be incurred by any party as a result of the map being inaccurate, incomplete or unsuitable in any way and for any reason.

Data source: LPI: DTDB, 2012. LPI: Imagery, 2012. Created by: Imorton, fmacKay, kpsroba



#### LEGEND

- Residential receiver
- The proposal
- Watercourse
- Road

Paper Size A4  
 0 75 150 300 450 600  
 Metres  
 Map Projection: Transverse Mercator  
 Horizontal Datum: GDA 1994  
 Grid: GDA 1994 MGA Zone 55



Australian Rail Track Corporation  
 Inland Rail - Narrabri to North Star

Operational rail noise contours, LAeq  
 2020 build

Job Number 22-17916  
 Revision 0  
 Date 02 Jun 2017

Figure E1- Sheet 2

G:\2217916\GIS\Maps\Deliverables\N2NS\Noise\2217916\_N003\_NNS\_2020\_Leq\_0.mxd

Level 3, GHD Tower, 24 Honeysuckle Drive, Newcastle NSW 2300 T 61 2 4979 9999 F 61 2 4979 9988 E [info@ghd.com](mailto:info@ghd.com) W [www.ghd.com.au](http://www.ghd.com.au)

© 2017. Whilst every care has been taken to prepare this map, GHD and LPI make no representations or warranties about its accuracy, reliability, completeness or suitability for any particular purpose and cannot accept liability and responsibility of any kind (whether in contract, tort or otherwise) for any expenses, losses, damages and/or costs (including indirect or consequential damage) which are or may be incurred by any party as a result of the map being inaccurate, incomplete or unsuitable in any way and for any reason.

Data source: LPI: DTDB, 2012. LPI: Imagery, 2012. Created by: Imorton, fmacKay, kpsroba



#### LEGEND

- Residential receiver
- The proposal
- Watercourse

Paper Size A4  
 0 75 150 300 450 600  
 Metres  
 Map Projection: Transverse Mercator  
 Horizontal Datum: GDA 1994  
 Grid: GDA 1994 MGA Zone 55



Australian Rail Track Corporation  
 Inland Rail - Narrabri to North Star

Operational rail noise contours, LAeq  
 2020 build

Job Number | 22-17916  
 Revision | 0  
 Date | 02 Jun 2017

**Figure E1- Sheet 3**

G:\2217916\GIS\Maps\Deliverables\N2NS\Noise\2217916\_N003\_NNS\_2020\_Leq\_0.mxd

Level 3, GHD Tower, 24 Honeysuckle Drive, Newcastle NSW 2300 T 61 2 4979 9999 F 61 2 4979 9988 E [entmail@ghd.com](mailto:entmail@ghd.com) W [www.ghd.com.au](http://www.ghd.com.au)

© 2017. Whilst every care has been taken to prepare this map, GHD and LPI make no representations or warranties about its accuracy, reliability, completeness or suitability for any particular purpose and cannot accept liability and responsibility of any kind (whether in contract, tort or otherwise) for any expenses, losses, damages and/or costs (including indirect or consequential damage) which are or may be incurred by any party as a result of the map being inaccurate, incomplete or unsuitable in any way and for any reason.

Data source: LPI: DTDB, 2012. LPI: Imagery, 2012. Created by: Imorton, fmacKay, kpsroba



#### LEGEND

- Residential receiver
- The proposal
- Watercourse

Paper Size A4  
 0 75 150 300 450 600  
 Metres  
 Map Projection: Transverse Mercator  
 Horizontal Datum: GDA 1994  
 Grid: GDA 1994 MGA Zone 55



Australian Rail Track Corporation  
 Inland Rail - Narrabri to North Star

Job Number 22-17916  
 Revision 0  
 Date 02 Jun 2017

Operational rail noise contours, LAeq  
 2020 build

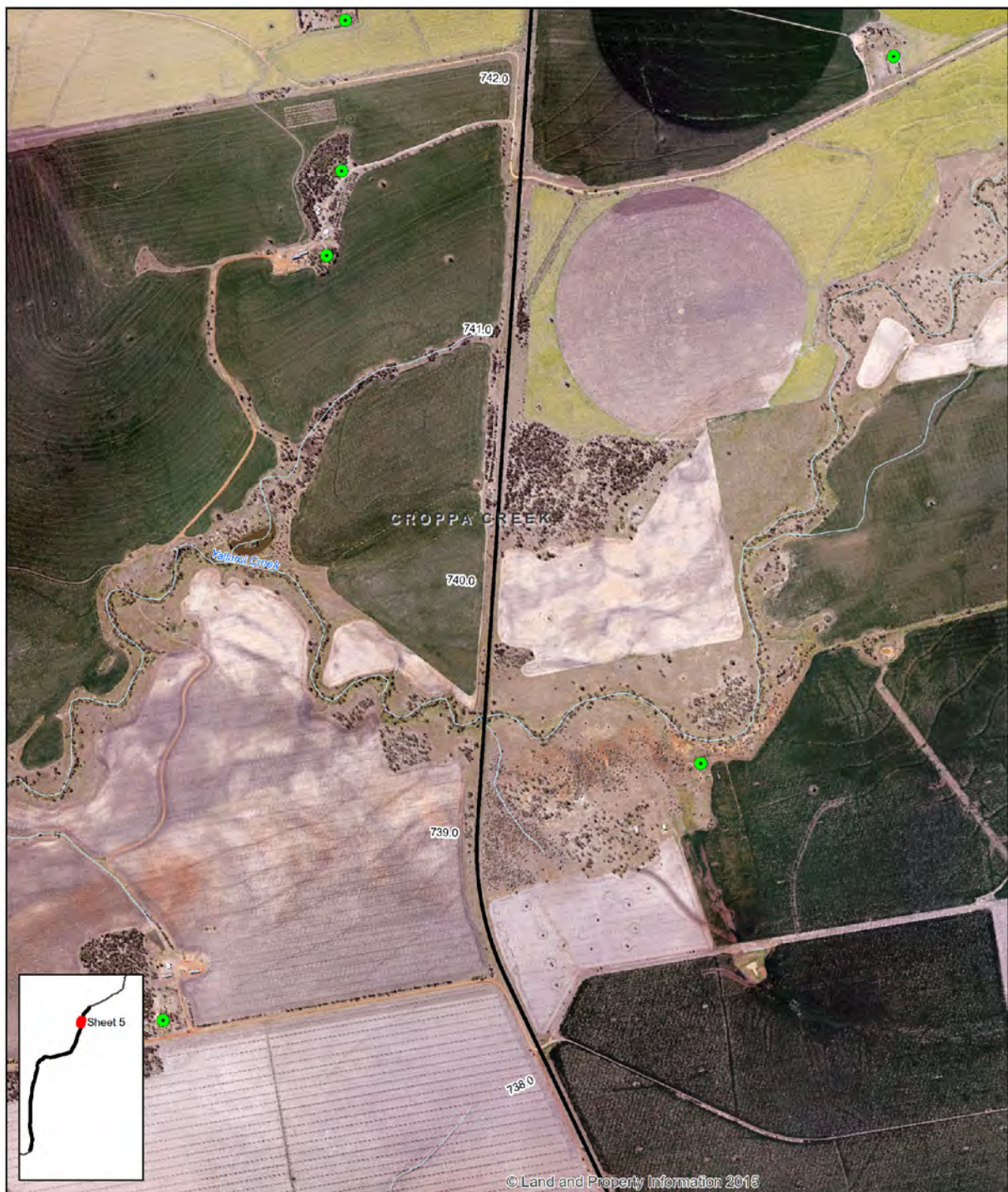
**Figure E1- Sheet 4**

G:\2217916\GIS\Maps\Deliverables\N2NS\Noise\2217916\_N003\_NNS\_2020\_Leq\_0.mxd

Level 3, GHD Tower, 24 Honeysuckle Drive, Newcastle NSW 2300 T 61 2 4979 9999 F 61 2 4979 9988 E ntlmail@ghd.com W www.ghd.com.au

© 2017. Whilst every care has been taken to prepare this map, GHD and LPI make no representations or warranties about its accuracy, reliability, completeness or suitability for any particular purpose and cannot accept liability and responsibility of any kind (whether in contract, tort or otherwise) for any expenses, losses, damages and/or costs (including indirect or consequential damage) which are or may be incurred by any party as a result of the map being inaccurate, incomplete or unsuitable in any way and for any reason.

Data source: LPI: DTDB, 2012. LPI: Imagery, 2012. Created by: Imorton, fmacKay, kpsroba



#### LEGEND

- Residential receiver
- The proposal
- Watercourse

Paper Size A4  
0 75 150 300 450 600  
Metres  
Map Projection: Transverse Mercator  
Horizontal Datum: GDA 1994  
Grid: GDA 1994 MGA Zone 55



Australian Rail Track Corporation  
Inland Rail - Narrabri to North Star

Operational rail noise contours, LAeq  
2020 build

Job Number 22-17916  
Revision 0  
Date 02 Jun 2017

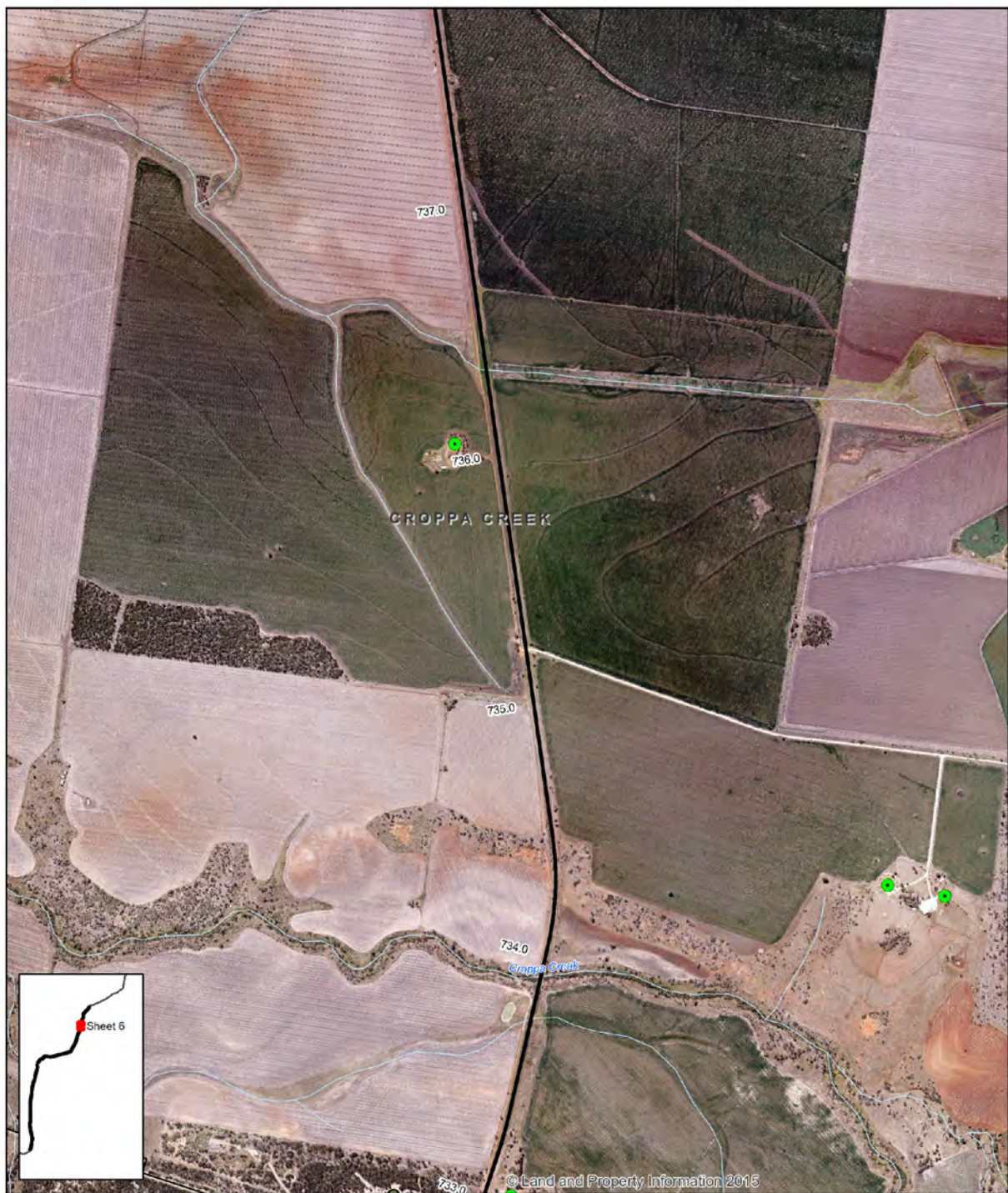
Figure E1- Sheet 5

G:\2217916\GIS\Maps\Deliverables\N2NS\Noise\2217916\_N003\_NNS\_2020\_Leq\_0.mxd

Level 3, GHD Tower, 24 Honeysuckle Drive, Newcastle NSW 2300 T 61 2 4979 9999 F 61 2 4979 9988 E [entmail@ghd.com](mailto:entmail@ghd.com) W [www.ghd.com.au](http://www.ghd.com.au)

© 2017. Whilst every care has been taken to prepare this map, GHD and LPI make no representations or warranties about its accuracy, reliability, completeness or suitability for any particular purpose and cannot accept liability and responsibility of any kind (whether in contract, tort or otherwise) for any expenses, losses, damages and/or costs (including indirect or consequential damage) which are or may be incurred by any party as a result of the map being inaccurate, incomplete or unsuitable in any way and for any reason.

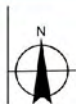
Data source: LPI: DTDB, 2012. LPI: Imagery, 2012. Created by: Imorton, fmacKay, kpsroba



#### LEGEND

- Residential receiver
- Passive recreation
- The proposal
- Watercourse
- Road

Paper Size A4  
 0 75 150 300 450 600  
 Metres  
 Map Projection: Transverse Mercator  
 Horizontal Datum: GDA 1994  
 Grid: GDA 1994 MGA Zone 55



Australian Rail Track Corporation  
 Inland Rail - Narrabri to North Star

Job Number 22-17916  
 Revision 0  
 Date 02 Jun 2017

Operational rail noise contours, LAeq  
 2020 build

**Figure E1- Sheet 6**

G:\2217916\GIS\Maps\Deliverables\N2NS\Noise\2217916\_N003\_NNS\_2020\_Leq\_0.mxd

Level 3, GHD Tower, 24 Honeysuckle Drive, Newcastle NSW 2300 T 61 2 4979 9999 F 61 2 4979 9988 E ntl@mail@ghd.com W www.ghd.com.au

© 2017. Whilst every care has been taken to prepare this map, GHD and LPI make no representations or warranties about its accuracy, reliability, completeness or suitability for any particular purpose and cannot accept liability and responsibility of any kind (whether in contract, tort or otherwise) for any expenses, losses, damages and/or costs (including indirect or consequential damage) which are or may be incurred by any party as a result of the map being inaccurate, incomplete or unsuitable in any way and for any reason.

Data source: LPI: DTDB, 2012. LPI: Imagery, 2012. Created by: Imorton, fmacKay, kpsroba



#### LEGEND

- |   |   |   |
|---|---|---|
| <span style="color: green;">●</span> Residential receiver | <span style="color: red;">●</span> Education            | <span style="color: black;">—</span> The proposal |
| <span style="color: green;">●</span> Active recreation    | <span style="color: green;">●</span> Passive recreation | <span style="color: blue;">—</span> Watercourse   |
|   |   | <span style="color: black;">—</span> Road         |

Paper Size A4  
0 75 150 300 450 600  
Metres  
Map Projection: Transverse Mercator  
Horizontal Datum: GDA 1994  
Grid: GDA 1994 MGA Zone 55



Australian Rail Track Corporation  
Inland Rail - Narrabri to North Star

Operational rail noise contours, LAeq  
2020 build

Job Number 22-17916  
Revision 0  
Date 02 Jun 2017

Figure E1- Sheet 7

G:\2217916\GIS\Maps\Deliverables\N2NS\Noise\2217916\_N003\_NNS\_2020\_Leq\_0.mxd

Level 3, GHD Tower, 24 Honeysuckle Drive, Newcastle NSW 2300 T 61 2 4979 9999 F 61 2 4979 9988 E [info@ghd.com](mailto:info@ghd.com) W [www.ghd.com.au](http://www.ghd.com.au)

© 2017. Whilst every care has been taken to prepare this map, GHD and LPI make no representations or warranties about its accuracy, reliability, completeness or suitability for any particular purpose and cannot accept liability and responsibility of any kind (whether in contract, tort or otherwise) for any expenses, losses, damages and/or costs (including indirect or consequential damage) which are or may be incurred by any party as a result of the map being inaccurate, incomplete or unsuitable in any way and for any reason.

Data source: LPI: DTDB, 2012. LPI: Imagery, 2012. Created by: tmorton, fmackay, kpsroba



#### LEGEND

- Residential receiver
- The proposal
- Watercourse
- Road

Paper Size A4  
 0 75 150 300 450 600  
 Metres  
 Map Projection: Transverse Mercator  
 Horizontal Datum: GDA 1994  
 Grid: GDA 1994 MGA Zone 55



Australian Rail Track Corporation  
 Inland Rail - Narrabri to North Star

Operational rail noise contours, LAeq  
 2020 build

Job Number 22-17916  
 Revision 0  
 Date 02 Jun 2017

**Figure E1- Sheet 8**

G:\2217916\GIS\Maps\Deliverables\N2NS\Noise\2217916\_N003\_NNS\_2020\_Leq\_0.mxd

Level 3, GHD Tower, 24 Honeysuckle Drive, Newcastle NSW 2300 T 61 2 4979 9999 F 61 2 4979 9988 E [entmail@ghd.com](mailto:entmail@ghd.com) W [www.ghd.com.au](http://www.ghd.com.au)

© 2017. Whilst every care has been taken to prepare this map, GHD and LPI make no representations or warranties about its accuracy, reliability, completeness or suitability for any particular purpose and cannot accept liability and responsibility of any kind (whether in contract, tort or otherwise) for any expenses, losses, damages and/or costs (including indirect or consequential damage) which are or may be incurred by any party as a result of the map being inaccurate, incomplete or unsuitable in any way and for any reason.

Data source: LPI: DTDB, 2012. LPI: Imagery, 2012. Created by: Imorton, fmacKay, kpsroba



#### LEGEND

- Residential receiver
- The proposal
- Watercourse

Paper Size A4  
 0 75 150 300 450 600  
 Metres  
 Map Projection: Transverse Mercator  
 Horizontal Datum: GDA 1994  
 Grid: GDA 1994 MGA Zone 55



Australian Rail Track Corporation  
 Inland Rail - Narrabri to North Star

Job Number 22-17916  
 Revision 0  
 Date 02 Jun 2017

Operational rail noise contours, LAeq  
 2020 build

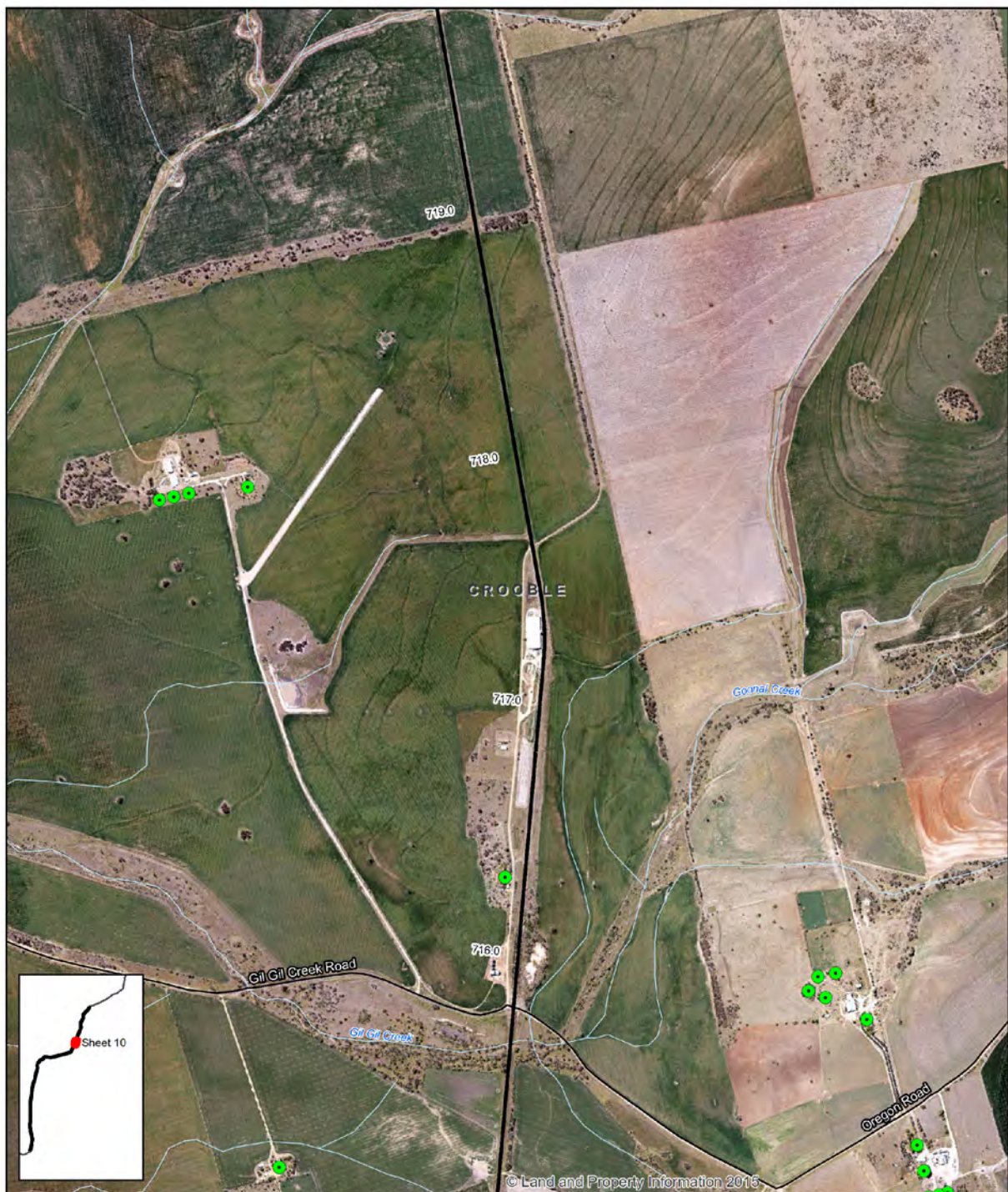
**Figure E1- Sheet 9**

G:\2217916\GIS\Maps\Deliverables\N2NS\Noise\2217916\_N003\_NNS\_2020\_Leq\_0.mxd

Level 3, GHD Tower, 24 Honeysuckle Drive, Newcastle NSW 2300 T 61 2 4979 9999 F 61 2 4979 9988 E [ent@mail@ghd.com](mailto:ent@mail@ghd.com) W [www.ghd.com.au](http://www.ghd.com.au)

© 2017. Whilst every care has been taken to prepare this map, GHD and LPI make no representations or warranties about its accuracy, reliability, completeness or suitability for any particular purpose and cannot accept liability and responsibility of any kind (whether in contract, tort or otherwise) for any expenses, losses, damages and/or costs (including indirect or consequential damage) which are or may be incurred by any party as a result of the map being inaccurate, incomplete or unsuitable in any way and for any reason.

Data source: LPI: DTDB, 2012. LPI: Imagery, 2012. Created by: Imorton, fmacKay, kpsroba



#### LEGEND

- Residential receiver
- The proposal
- Watercourse
- Road

Paper Size A4  
 0 75 150 300 450 600  
 Metres  
 Map Projection: Transverse Mercator  
 Horizontal Datum: GDA 1994  
 Grid: GDA 1994 MGA Zone 55



Australian Rail Track Corporation  
 Inland Rail - Narrabri to North Star

Job Number 22-17916  
 Revision 0  
 Date 02 Jun 2017

Operational rail noise contours, LAeq  
 2020 build

Figure E1- Sheet 10

G:\2217916\GIS\Maps\Deliverables\N2NS\Noise\2217916\_N003\_NNS\_2020\_Leq\_0.mxd

Level 3, GHD Tower, 24 Honeysuckle Drive, Newcastle NSW 2300 T 61 2 4979 9999 F 61 2 4979 9988 E ntl@mail@ghd.com W www.ghd.com.au

© 2017. Whilst every care has been taken to prepare this map, GHD and LPI make no representations or warranties about its accuracy, reliability, completeness or suitability for any particular purpose and cannot accept liability and responsibility of any kind (whether in contract, tort or otherwise) for any expenses, losses, damages and/or costs (including indirect or consequential damage) which are or may be incurred by any party as a result of the map being inaccurate, incomplete or unsuitable in any way and for any reason.

Data source: LPI: DTDB, 2012. LPI: Imagery, 2012. Created by: Imorton, fmacKay, kpsroba



#### LEGEND

- Residential receiver
- The proposal
- Watercourse
- Road

Paper Size A4  
0 75 150 300 450 600  
Metres  
Map Projection: Transverse Mercator  
Horizontal Datum: GDA 1994  
Grid: GDA 1994 MGA Zone 55



Australian Rail Track Corporation  
Inland Rail - Narrabri to North Star

Job Number 22-17916  
Revision 0  
Date 02 Jun 2017

Operational rail noise contours, LAeq  
2020 build

Figure E1- Sheet 11

G:\2217916\GIS\Maps\Deliverables\N2NS\Noise\2217916\_N003\_NNS\_2020\_Leq\_0.mxd

Level 3, GHD Tower, 24 Honeysuckle Drive, Newcastle NSW 2300 T 61 2 4979 9999 F 61 2 4979 9988 E ntl@mail@ghd.com W www.ghd.com.au

© 2017. Whilst every care has been taken to prepare this map, GHD and LPI make no representations or warranties about its accuracy, reliability, completeness or suitability for any particular purpose and cannot accept liability and responsibility of any kind (whether in contract, tort or otherwise) for any expenses, losses, damages and/or costs (including indirect or consequential damage) which are or may be incurred by any party as a result of the map being inaccurate, incomplete or unsuitable in any way and for any reason.

Data source: LPI: DTDB, 2012. LPI: Imagery, 2012. Created by: Imorton, fmacKay, kpsroba



#### LEGEND

- Residential receiver
- The proposal
- Watercourse
- Road

Paper Size A4  
0 75 150 300 450 600  
Metres  
Map Projection: Transverse Mercator  
Horizontal Datum: GDA 1994  
Grid: GDA 1994 MGA Zone 55



Australian Rail Track Corporation  
Inland Rail - Narrabri to North Star

Job Number 22-17916  
Revision 0  
Date 02 Jun 2017

Operational rail noise contours, LAeq  
2020 build

Figure E1- Sheet 12

G:\2217916\GIS\Maps\Deliverables\N2NS\Noise\2217916\_N003\_NNS\_2020\_Leq\_0.mxd

Level 3, GHD Tower, 24 Honeysuckle Drive, Newcastle NSW 2300 T 61 2 4979 9999 F 61 2 4979 9988 E [entmail@ghd.com](mailto:entmail@ghd.com) W [www.ghd.com.au](http://www.ghd.com.au)

© 2017. Whilst every care has been taken to prepare this map, GHD and LPI make no representations or warranties about its accuracy, reliability, completeness or suitability for any particular purpose and cannot accept liability and responsibility of any kind (whether in contract, tort or otherwise) for any expenses, losses, damages and/or costs (including indirect or consequential damage) which are or may be incurred by any party as a result of the map being inaccurate, incomplete or unsuitable in any way and for any reason.

Data source: LPI: DTDB, 2012. LPI: Imagery, 2012. Created by: tmorton, fmacKay, kpsroba



#### LEGEND

- Residential receiver
- The proposal
- Watercourse
- Road

Paper Size A4  
 0 75 150 300 450 600  
 Metres  
 Map Projection: Transverse Mercator  
 Horizontal Datum: GDA 1994  
 Grid: GDA 1994 MGA Zone 55



Australian Rail Track Corporation  
 Inland Rail - Narrabri to North Star

Job Number 22-17916  
 Revision 0  
 Date 02 Jun 2017

Operational rail noise contours, LAeq  
 2020 build

**Figure E1- Sheet 13**

G:\2217916\GIS\Maps\Deliverables\N2NS\Noise\2217916\_N003\_NNS\_2020\_Leq\_0.mxd

Level 3, GHD Tower, 24 Honeysuckle Drive, Newcastle NSW 2300 T 61 2 4979 9999 F 61 2 4979 9988 E [ent@mail@ghd.com](mailto:ent@mail@ghd.com) W [www.ghd.com.au](http://www.ghd.com.au)

© 2017. Whilst every care has been taken to prepare this map, GHD and LPI make no representations or warranties about its accuracy, reliability, completeness or suitability for any particular purpose and cannot accept liability and responsibility of any kind (whether in contract, tort or otherwise) for any expenses, losses, damages and/or costs (including indirect or consequential damage) which are or may be incurred by any party as a result of the map being inaccurate, incomplete or unsuitable in any way and for any reason.

Data source: LPI: DTDB, 2012. LPI: Imagery, 2012. Created by: Imorton, fmackay, kpsroba



#### LEGEND

- Residential receiver
- The proposal
- Watercourse

Paper Size A4  
 0 75 150 300 450 600  
 Metres  
 Map Projection: Transverse Mercator  
 Horizontal Datum: GDA 1994  
 Grid: GDA 1994 MGA Zone 55



Australian Rail Track Corporation  
 Inland Rail - Narrabri to North Star

Job Number 22-17916  
 Revision 0  
 Date 02 Jun 2017

Operational rail noise contours, LAeq  
 2020 build

Figure E1- Sheet 14

G:\2217916\GIS\Maps\Deliverables\N2NS\Noise\2217916\_N003\_NNS\_2020\_Leq\_0.mxd

Level 3, GHD Tower, 24 Honeysuckle Drive, Newcastle NSW 2300 T 61 2 4979 9999 F 61 2 4979 9988 E ntl@mail@ghd.com W www.ghd.com.au

© 2017. Whilst every care has been taken to prepare this map, GHD and LPI make no representations or warranties about its accuracy, reliability, completeness or suitability for any particular purpose and cannot accept liability and responsibility of any kind (whether in contract, tort or otherwise) for any expenses, losses, damages and/or costs (including indirect or consequential damage) which are or may be incurred by any party as a result of the map being inaccurate, incomplete or unsuitable in any way and for any reason.

Data source: LPI: DTDB, 2012. LPI: Imagery, 2012. Created by: Imorton, fmacKay, kpsroba



#### LEGEND

- The proposal
- Watercourse

Paper Size A4  
 0 75 150 300 450 600  
 Metres  
 Map Projection: Transverse Mercator  
 Horizontal Datum: GDA 1994  
 Grid: GDA 1994 MGA Zone 55



Australian Rail Track Corporation  
 Inland Rail - Narrabri to North Star

Job Number 22-17916  
 Revision 0  
 Date 02 Jun 2017

Operational rail noise contours, LAeq  
 2020 build

Figure E1- Sheet 15

G:\2217916\GIS\Maps\Deliverables\N2NS\Noise\2217916\_N003\_NNS\_2020\_Leq\_0.mxd

Level 3, GHD Tower, 24 Honeysuckle Drive, Newcastle NSW 2300 T 61 2 4979 9999 F 61 2 4979 9988 E [ent@mail@ghd.com](mailto:ent@mail@ghd.com) W [www.ghd.com.au](http://www.ghd.com.au)

© 2017. Whilst every care has been taken to prepare this map, GHD and LPI make no representations or warranties about its accuracy, reliability, completeness or suitability for any particular purpose and cannot accept liability and responsibility of any kind (whether in contract, tort or otherwise) for any expenses, losses, damages and/or costs (including indirect or consequential damage) which are or may be incurred by any party as a result of the map being inaccurate, incomplete or unsuitable in any way and for any reason.

Data source: LPI: DTDB, 2012. LPI: Imagery, 2012. Created by: Imorton, fmackay, kpsroba



#### LEGEND

- The proposal
- Watercourse

Paper Size A4  
 0 75 150 300 450 600  
 Metres  
 Map Projection: Transverse Mercator  
 Horizontal Datum: GDA 1994  
 Grid: GDA 1994 MGA Zone 55



Australian Rail Track Corporation  
 Inland Rail - Narrabri to North Star

Job Number | 22-17916  
 Revision | 0  
 Date | 02 Jun 2017

Operational rail noise contours, LAeq  
 2020 build

Figure E1- Sheet 16

G:\2217916\GIS\Maps\Deliverables\N2NS\Noise\2217916\_N003\_NNS\_2020\_Leq\_0.mxd

Level 3, GHD Tower, 24 Honeysuckle Drive, Newcastle NSW 2300 T 61 2 4979 9999 F 61 2 4979 9988 E nt@mail@ghd.com W www.ghd.com.au

© 2017. Whilst every care has been taken to prepare this map, GHD and LPI make no representations or warranties about its accuracy, reliability, completeness or suitability for any particular purpose and cannot accept liability and responsibility of any kind (whether in contract, tort or otherwise) for any expenses, losses, damages and/or costs (including indirect or consequential damage) which are or may be incurred by any party as a result of the map being inaccurate, incomplete or unsuitable in any way and for any reason.

Data source: LPI: DTDB, 2012. LPI: Imagery, 2012. Created by: Imorton, fmacKay, kpsroba



#### LEGEND

- The proposal
- Watercourse
- Road

Paper Size A4  
0 75 150 300 450 600  
Metres  
Map Projection: Transverse Mercator  
Horizontal Datum: GDA 1994  
Grid: GDA 1994 MGA Zone 55



Australian Rail Track Corporation  
Inland Rail - Narrabri to North Star

Job Number 22-17916  
Revision 0  
Date 02 Jun 2017

Operational rail noise contours, LAeq  
2020 build

Figure E1- Sheet 17

G:\2217916\GIS\Maps\Deliverables\N2NS\Noise\2217916\_N003\_NNS\_2020\_Leq\_0.mxd

Level 3, GHD Tower, 24 Honeysuckle Drive, Newcastle NSW 2300 T 61 2 4979 9999 F 61 2 4979 9988 E nt@mail@ghd.com W www.ghd.com.au

© 2017. Whilst every care has been taken to prepare this map, GHD and LPI make no representations or warranties about its accuracy, reliability, completeness or suitability for any particular purpose and cannot accept liability and responsibility of any kind (whether in contract, tort or otherwise) for any expenses, losses, damages and/or costs (including indirect or consequential damage) which are or may be incurred by any party as a result of the map being inaccurate, incomplete or unsuitable in any way and for any reason.

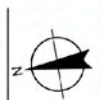
Data source: LPI: DTDB, 2012. LPI: Imagery, 2012. Created by: tmorton, fmackay, kpsroba



#### LEGEND

- Residential receiver
- The proposal
- Watercourse
- Road

Paper Size A4  
 0 75 150 300 450 600  
 Metres  
 Map Projection: Transverse Mercator  
 Horizontal Datum: GDA 1994  
 Grid: GDA 1994 MGA Zone 55



Australian Rail Track Corporation  
 Inland Rail - Narrabri to North Star

Job Number | 22-17916  
 Revision | 0  
 Date | 02 Jun 2017

Operational rail noise contours, LAeq  
 2020 build

Figure E1- Sheet 18

G:\2217916\GIS\Maps\Deliverables\N2NS\Noise\2217916\_N003\_NNS\_2020\_Leq\_0.mxd

Level 3, GHD Tower, 24 Honeysuckle Drive, Newcastle NSW 2300 T 61 2 4979 9999 F 61 2 4979 9988 E ntlmail@ghd.com W www.ghd.com.au

© 2017. Whilst every care has been taken to prepare this map, GHD and LPI make no representations or warranties about its accuracy, reliability, completeness or suitability for any particular purpose and cannot accept liability and responsibility of any kind (whether in contract, tort or otherwise) for any expenses, losses, damages and/or costs (including indirect or consequential damage) which are or may be incurred by any party as a result of the map being inaccurate, incomplete or unsuitable in any way and for any reason.

Data source: LPI: DTDB, 2012. LPI: Imagery, 2012. Created by: Imorton, fmacKay, kpsroba



#### LEGEND

- Residential receiver
- Active recreation
- The proposal
- Watercourse
- Highway
- Road

Paper Size A4  
0 75 150 300 450 600  
Metres  
Map Projection: Transverse Mercator  
Horizontal Datum: GDA 1994  
Grid: GDA 1994 MGA Zone 55



Australian Rail Track Corporation  
Inland Rail - Narrabri to North Star

Job Number 22-17916  
Revision 0  
Date 02 Jun 2017

Operational rail noise contours, LAeq  
2020 build

Figure E1- Sheet 19

G:\2217916\GIS\Maps\Deliverables\N2NS\Noise\2217916\_N003\_NNS\_2020\_Leq\_0.mxd

Level 3, GHD Tower, 24 Honeysuckle Drive, Newcastle NSW 2300 T 61 2 4979 9999 F 61 2 4979 9988 E ntl@mail@ghd.com W www.ghd.com.au

© 2017. Whilst every care has been taken to prepare this map, GHD and LPI make no representations or warranties about its accuracy, reliability, completeness or suitability for any particular purpose and cannot accept liability and responsibility of any kind (whether in contract, tort or otherwise) for any expenses, losses, damages and/or costs (including indirect or consequential damage) which are or may be incurred by any party as a result of the map being inaccurate, incomplete or unsuitable in any way and for any reason.

Data source: LPI: DTDB, 2012. LPI: Imagery, 2012. Created by: tmorton, fmacKay, kproba



#### LEGEND

- Residential receiver
- The proposal
- Watercourse
- Highway
- Road

Paper Size A4  
 0 75 150 300 450 600  
 Metres  
 Map Projection: Transverse Mercator  
 Horizontal Datum: GDA 1994  
 Grid: GDA 1994 MGA Zone 55



Australian Rail Track Corporation  
 Inland Rail - Narrabri to North Star

Job Number | 22-17916  
 Revision | 0  
 Date | 02 Jun 2017

Operational rail noise contours, LAeq  
 2020 build

Figure E1- Sheet 20

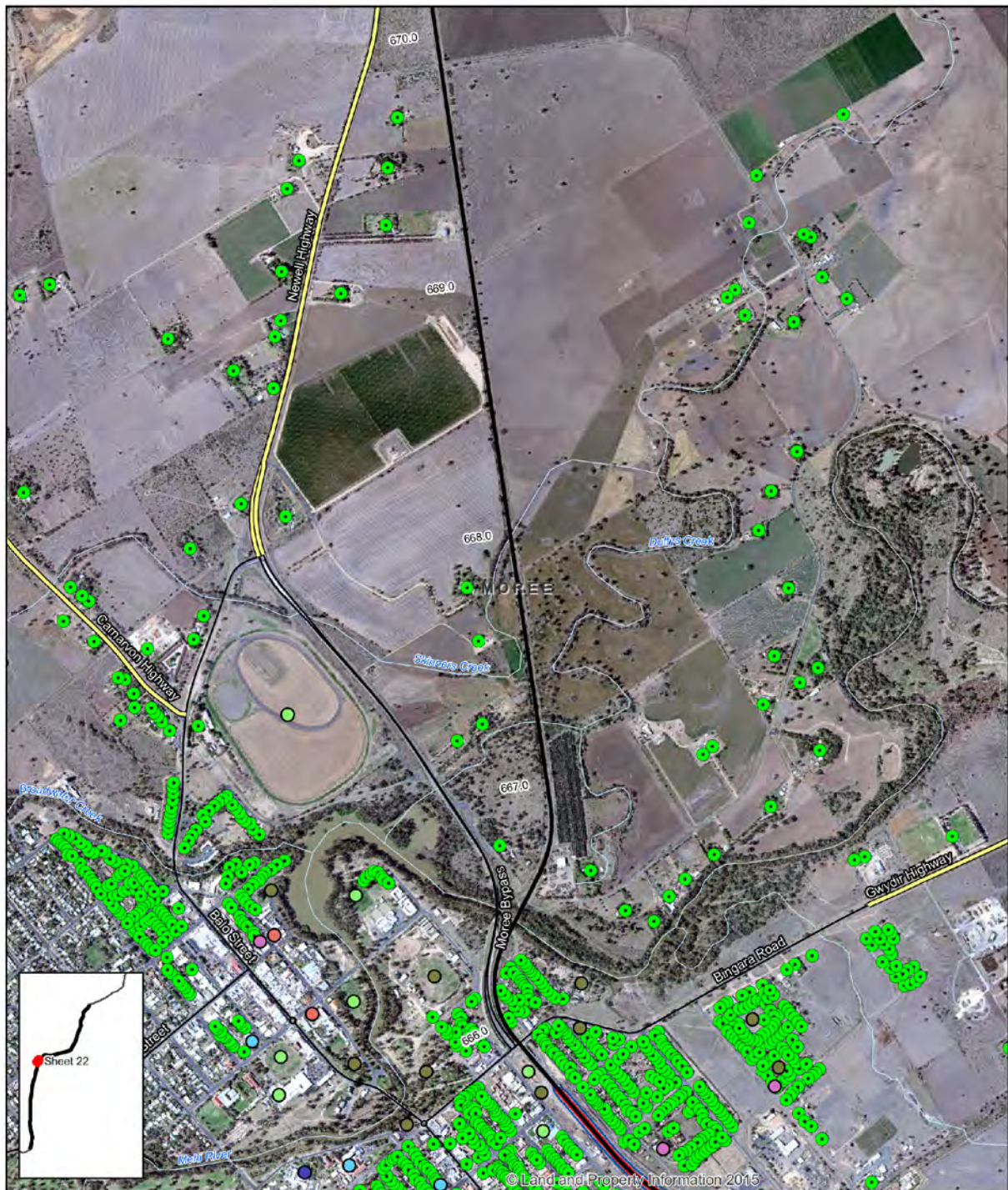
G:\2217916\GIS\Maps\Deliverables\N2NS\Noise\2217916\_N003\_NNS\_2020\_Leq\_0.mxd

Level 3, GHD Tower, 24 Honeysuckle Drive, Newcastle NSW 2300 T 61 2 4979 9999 F 61 2 4979 9988 E ntl@mail@ghd.com W www.ghd.com.au

© 2017. Whilst every care has been taken to prepare this map, GHD and LPI make no representations or warranties about its accuracy, reliability, completeness or suitability for any particular purpose and cannot accept liability and responsibility of any kind (whether in contract, tort or otherwise) for any expenses, losses, damages and/or costs (including indirect or consequential damage) which are or may be incurred by any party as a result of the map being inaccurate, incomplete or unsuitable in any way and for any reason.

Data source: LPI: DTDB, 2012. LPI: Imagery, 2012. Created by: tmorton, fmacKay, kpsroba

© 2012 Wiley Periodicals, Inc. *Journal of Interpersonal Violence* 27(12). DOI: 10.1177/0886260512468211  
This article is distributed under the terms of the Creative Commons Attribution 3.0 License, which permits unrestricted use, distribution, and reproduction in any medium, provided the original work is properly cited. For a complete guide to the Creative Commons license, see <http://creativecommons.org/licenses/by/3.0/>.



#### LEGEND

- |   |   |   |  |
|---|---|---|--|
| <span style="color: green;">●</span> Residential receiver | <span style="color: blue;">●</span> Health              | <span style="color: black;">—</span> The proposal | <span style="color: blue;">—</span> 2020 Build 60dB(A) LAeq 9-hour |
| <span style="color: green;">●</span> Active recreation    | <span style="color: brown;">●</span> Passive recreation | <span style="color: grey;">—</span> Watercourse   | <span style="color: red;">—</span> 2020 Build 65dB(A) LAeq 15-hour |
| <span style="color: blue;">●</span> Aged care             | <span style="color: pink;">●</span> Religious           | <span style="color: yellow;">—</span> Highway     |  |
| <span style="color: red;">●</span> Education              |   | <span style="color: black;">—</span> Road         |  |

Paper Size A4  
0 75 150 300 450 600  
Metres  
Map Projection: Transverse Mercator  
Horizontal Datum: GDA 1994  
Grid: GDA 1994 MGA Zone 55



Australian Rail Track Corporation  
Inland Rail - Narrabri to North Star

Operational rail noise contours, LAeq  
2020 build

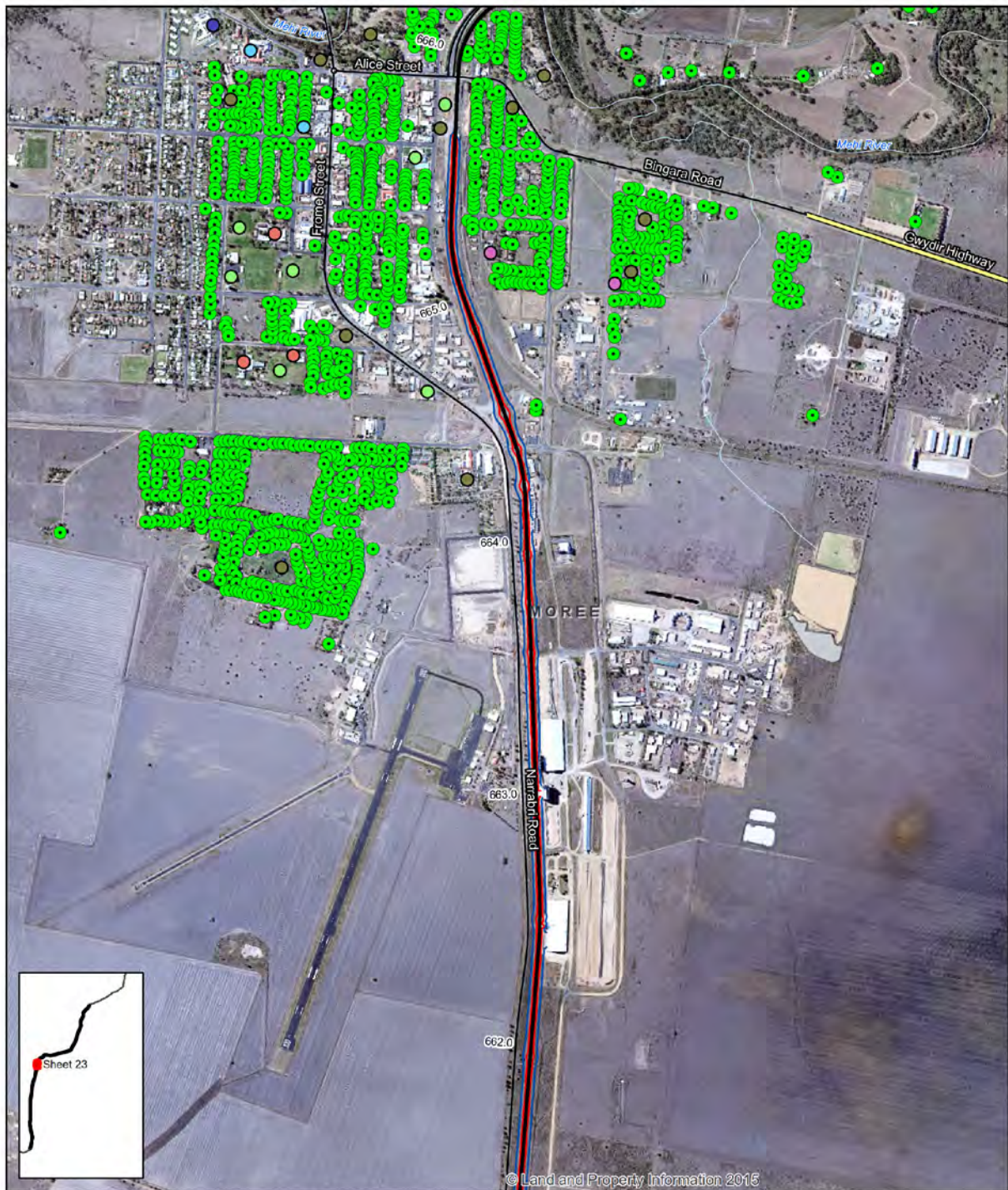
Job Number | 22-17916  
Revision | 0  
Date | 02 Jun 2017

Figure E1- Sheet 22

G:\2217916\GIS\Maps\Deliverables\N2NS\Noise\2217916\_N003\_NNS\_2020\_Leq\_0.mxd

Level 3, GHD Tower, 24 Honeysuckle Drive, Newcastle NSW 2300 T 61 2 4979 9999 F 61 2 4979 9988 E info@ghd.com W www.ghd.com.au

© 2017. Whilst every care has been taken to prepare this map, GHD and LPI make no representations or warranties about its accuracy, reliability, completeness or suitability for any particular purpose and cannot accept liability and responsibility of any kind (whether in contract, tort or otherwise) for any expenses, losses, damages and/or costs (including indirect or consequential damage) which are or may be incurred by any party as a result of the map being inaccurate, incomplete or unsuitable in any way and for any reason.  
Data source: LPI: DTDB, 2012. LPI: Imagery, 2012. Created by: tmorton, fmacKay, kpsroba



#### LEGEND

- |   |   |   |  |
|---|---|---|--|
| <span style="color: green;">●</span> Residential receiver | <span style="color: blue;">●</span> Health              | <span style="color: black;">—</span> The proposal | <span style="color: blue;">—</span> 2020 Build 60dB(A) LAeq 9-hour |
| <span style="color: green;">●</span> Active recreation    | <span style="color: brown;">●</span> Passive recreation | <span style="color: grey;">—</span> Watercourse   | <span style="color: red;">—</span> 2020 Build 65dB(A) LAeq 15-hour |
| <span style="color: blue;">●</span> Aged care             | <span style="color: pink;">●</span> Religious           | <span style="color: yellow;">—</span> Highway     |  |
| <span style="color: red;">●</span> Education              |   | <span style="color: black;">—</span> Road         |  |

Paper Size A4  
0 75 150 300 450 600  
Metres  
Map Projection: Transverse Mercator  
Horizontal Datum: GDA 1994  
Grid: GDA 1994 MGA Zone 55



Australian Rail Track Corporation  
Inland Rail - Narrabri to North Star

Job Number 22-17916  
Revision 0  
Date 02 Jun 2017

Operational rail noise contours, LAeq  
2020 build

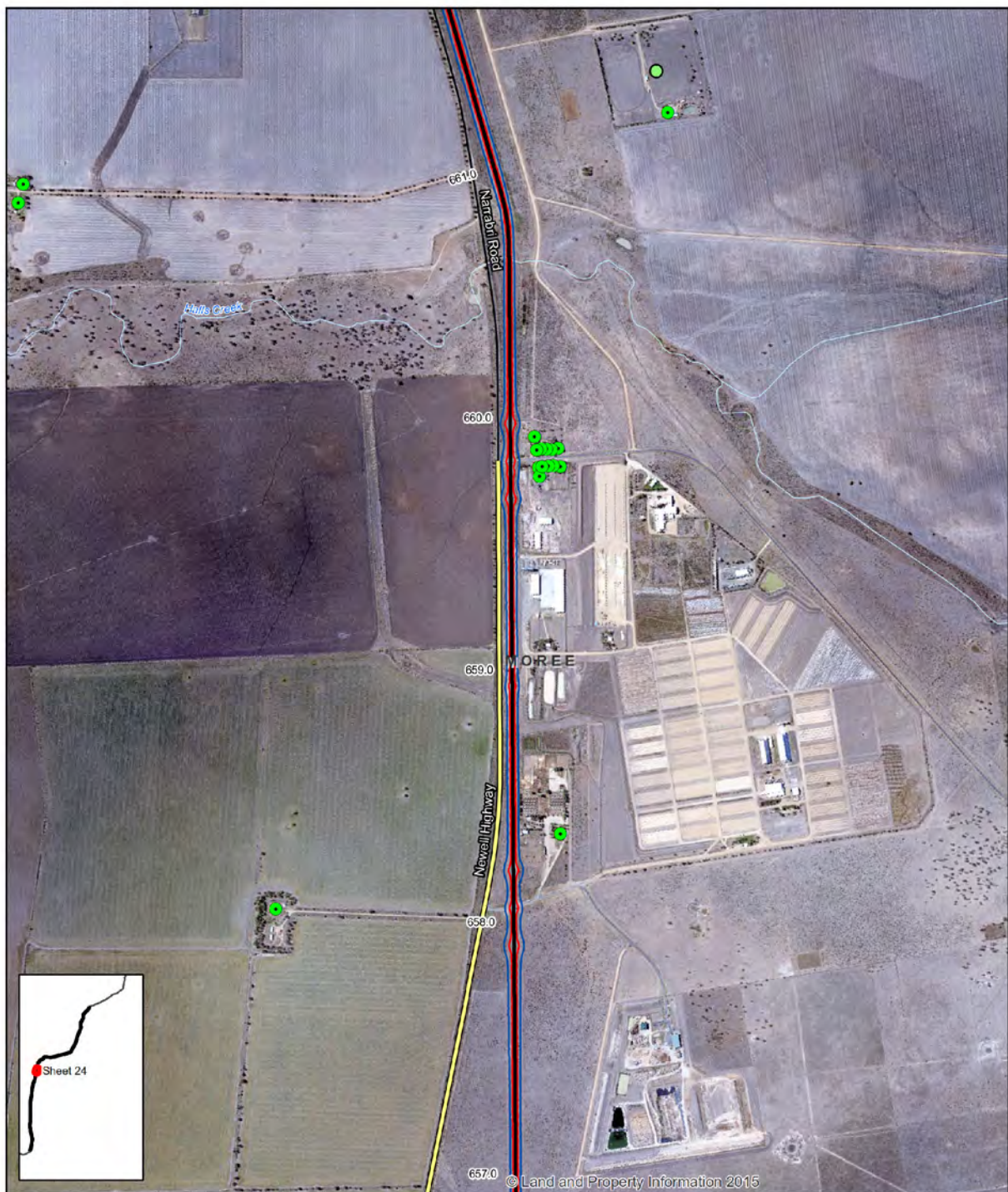
Figure E1- Sheet 23

G:\2217916\GIS\Maps\Deliverables\W2NS\Noise\2217916\_N003\_NNS\_2020\_Leq\_0.mxd

Level 3, GHD Tower, 24 Honeysuckle Drive, Newcastle NSW 2300 T 61 2 4979 9999 F 61 2 4979 9988 E ntl@mail@ghd.com W www.ghd.com.au

© 2017. Whilst every care has been taken to prepare this map, GHD and LPI make no representations or warranties about its accuracy, reliability, completeness or suitability for any particular purpose and cannot accept liability and responsibility of any kind (whether in contract, tort or otherwise) for any expenses, losses, damages and/or costs (including indirect or consequential damage) which are or may be incurred by any party as a result of the map being inaccurate, incomplete or unsuitable in any way and for any reason.

Data source: LPI: DTDB, 2012. LPI: Imagery, 2012. Created by: tmorton, fmacKay, kpsroba



#### LEGEND

- |   |  |  |
|---|--|--|
| <span style="color: green;">●</span> Residential receiver | <span style="color: black;">—</span> The proposal    | <span style="color: blue;">—</span> 2020 Build 60dB(A) LAeq 9-hour |
| <span style="color: green;">○</span> Active recreation    | <span style="color: lightblue;">—</span> Watercourse | <span style="color: red;">—</span> 2020 Build 65dB(A) LAeq 15-hour |
|   | <span style="color: yellow;">—</span> Highway        |  |
|   | <span style="color: black;">—</span> Road            |  |

Paper Size A4  
0 75 150 300 450 600  
Metres  
Map Projection: Transverse Mercator  
Horizontal Datum: GDA 1994  
Grid: GDA 1994 MGA Zone 55



Australian Rail Track Corporation  
Inland Rail - Narrabri to North Star

Job Number 22-17916  
Revision 0  
Date 02 Jun 2017

Operational rail noise contours, LAeq  
2020 build

Figure E1- Sheet 24

G:\2217916\GIS\Maps\Deliverables\N2NS\Noise\2217916\_N003\_NNS\_2020\_Leq\_0.mxd

Level 3, GHD Tower, 24 Honeysuckle Drive, Newcastle NSW 2300 T 61 2 4979 9999 F 61 2 4979 9988 E [ent@mail@ghd.com](mailto:ent@mail@ghd.com) W [www.ghd.com.au](http://www.ghd.com.au)

© 2017. Whilst every care has been taken to prepare this map, GHD and LPI make no representations or warranties about its accuracy, reliability, completeness or suitability for any particular purpose and cannot accept liability and responsibility of any kind (whether in contract, tort or otherwise) for any expenses, losses, damages and/or costs (including indirect or consequential damage) which are or may be incurred by any party as a result of the map being inaccurate, incomplete or unsuitable in any way and for any reason.

Data source: LPI: DTDB, 2012. LPI: Imagery, 2012. Created by: tmorton, fmacKay, kpsroba



#### LEGEND

- |   |   |  |
|---|---|--|
| <span style="color: green;">●</span> Residential receiver | <span style="color: black;">—</span> The proposal | <span style="color: blue;">—</span> 2020 Build 60dB(A) LAeq 9-hour |
|   | <span style="color: blue;">—</span> Watercourse   | <span style="color: red;">—</span> 2020 Build 65dB(A) LAeq 15-hour |
|   | <span style="color: yellow;">—</span> Highway     |  |
|   | <span style="color: black;">—</span> Road         |  |

Paper Size A4  
0 75 150 300 450 600  
Metres  
Map Projection: Transverse Mercator  
Horizontal Datum: GDA 1994  
Grid: GDA 1994 MGA Zone 55



Australian Rail Track Corporation  
Inland Rail - Narrabri to North Star

Job Number 22-17916  
Revision 0  
Date 02 Jun 2017

Operational rail noise contours, LAeq  
2020 build

Figure E1- Sheet 25

G:\2217916\GIS\Maps\Deliverables\N2NS\Noise\2217916\_N003\_NNS\_2020\_Leq\_0.mxd

Level 3, GHD Tower, 24 Honeysuckle Drive, Newcastle NSW 2300 T 61 2 4979 9999 F 61 2 4979 9988 E ntl@mail@ghd.com W www.ghd.com.au

© 2017. Whilst every care has been taken to prepare this map, GHD and LPI make no representations or warranties about its accuracy, reliability, completeness or suitability for any particular purpose and cannot accept liability and responsibility of any kind (whether in contract, tort or otherwise) for any expenses, losses, damages and/or costs (including indirect or consequential damage) which are or may be incurred by any party as a result of the map being inaccurate, incomplete or unsuitable in any way and for any reason.

Data source: LPI: DTDB, 2012. LPI: Imagery, 2012. Created by: tmorton, fmacKay, kpsroba



#### LEGEND

- Residential receiver
- The proposal
- 2020 Build 60dB(A) LAeq 9-hour
- Watercourse
- 2020 Build 65dB(A) LAeq 15-hour
- Highway
- Road

Paper Size A4  
0 75 150 300 450 600  
Metres  
Map Projection: Transverse Mercator  
Horizontal Datum: GDA 1994  
Grid: GDA 1994 MGA Zone 55



Australian Rail Track Corporation  
Inland Rail - Narrabri to North Star

Job Number 22-17916  
Revision 0  
Date 02 Jun 2017

Operational rail noise contours, LAeq  
2020 build

Figure E1- Sheet 26

G:\2217916\GIS\Maps\Deliverables\N2NS\Noise\2217916\_N003\_NNS\_2020\_Leq\_0.mxd Level 3, GHD Tower, 24 Honeysuckle Drive, Newcastle NSW 2300 T 61 2 4979 9999 F 61 2 4979 9988 E ntl@mail@ghd.com W www.ghd.com.au  
© 2017. Whilst every care has been taken to prepare this map, GHD and LPI make no representations or warranties about its accuracy, reliability, completeness or suitability for any particular purpose and cannot accept liability and responsibility of any kind (whether in contract, tort or otherwise) for any expenses, losses, damages and/or costs (including indirect or consequential damage) which are or may be incurred by any party as a result of the map being inaccurate, incomplete or unsuitable in any way and for any reason.  
Data source: LPI: DTDB, 2012. LPI: Imagery, 2012. Created by: Imorton, fmacKay, kpsroba



#### LEGEND

- Residential receiver
- The proposal
- 2020 Build 60dB(A) LAeq 9-hour
- Watercourse
- 2020 Build 65dB(A) LAeq 15-hour
- Highway
- Road

Paper Size A4  
0 75 150 300 450 600  
Metres  
Map Projection: Transverse Mercator  
Horizontal Datum: GDA 1994  
Grid: GDA 1994 MGA Zone 55



Australian Rail Track Corporation  
Inland Rail - Narrabri to North Star

Job Number 22-17916  
Revision 0  
Date 02 Jun 2017

Operational rail noise contours, LAeq  
2020 build

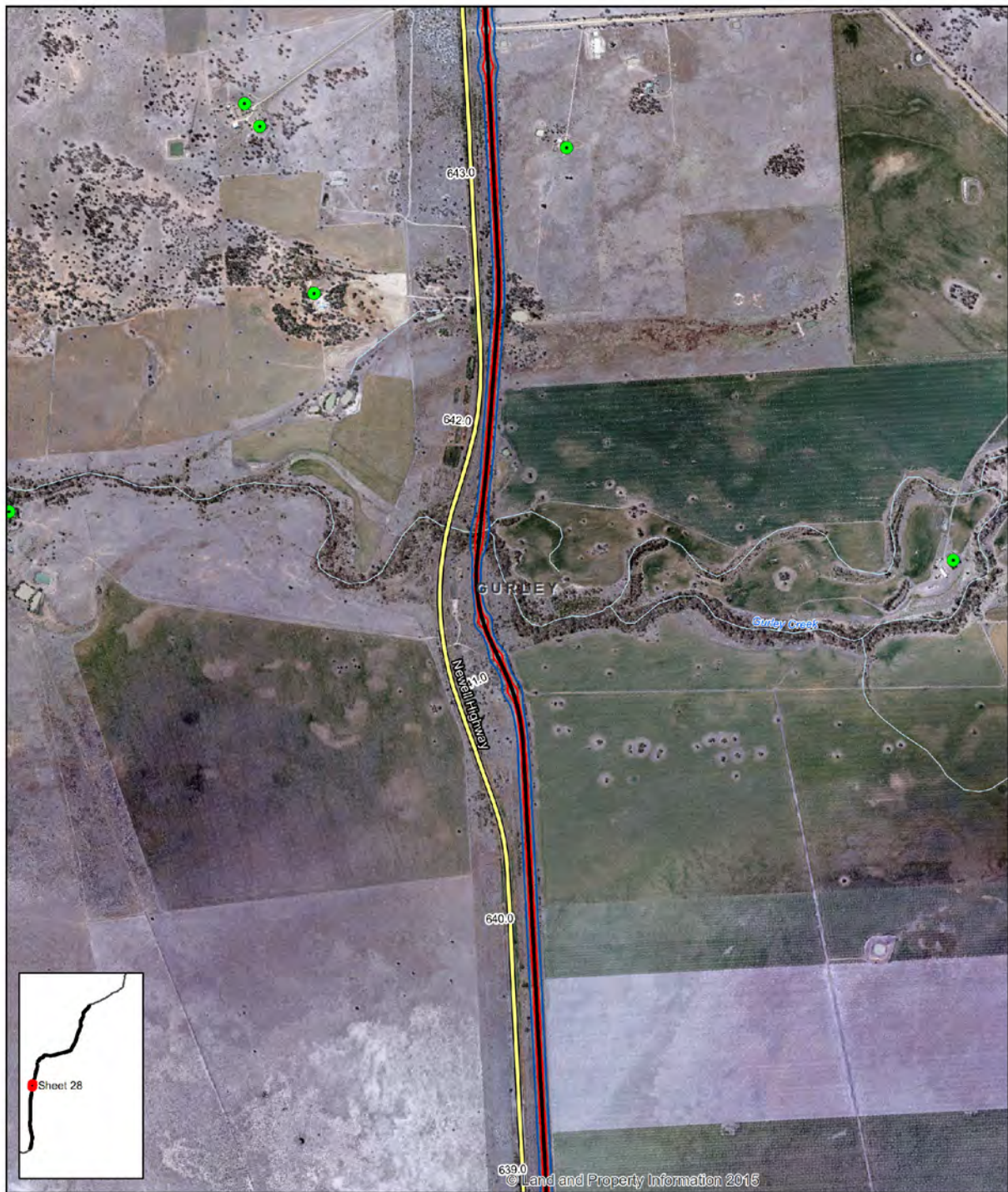
Figure E1- Sheet 27

G:\2217916\GIS\Maps\Deliverables\N2NS\Noise\2217916\_N003\_NNS\_2020\_Leq\_0.mxd

Level 3, GHD Tower, 24 Honeysuckle Drive, Newcastle NSW 2300 T 61 2 4979 9999 F 61 2 4979 9988 E ntlmail@ghd.com W www.ghd.com.au

© 2017. Whilst every care has been taken to prepare this map, GHD and LPI make no representations or warranties about its accuracy, reliability, completeness or suitability for any particular purpose and cannot accept liability and responsibility of any kind (whether in contract, tort or otherwise) for any expenses, losses, damages and/or costs (including indirect or consequential damage) which are or may be incurred by any party as a result of the map being inaccurate, incomplete or unsuitable in any way and for any reason.

Data source: LPI: DTDB, 2012. LPI: Imagery, 2012. Created by: tmorton, fmacKay, kpsroba



#### LEGEND

- Residential receiver
- The proposal
- 2020 Build 60dB(A) LAeq 9-hour
- Watercourse
- Highway
- 2020 Build 65dB(A) LAeq 15-hour
- Road

Paper Size A4  
0 75 150 300 450 600  
Metres  
Map Projection: Transverse Mercator  
Horizontal Datum: GDA 1994  
Grid: GDA 1994 MGA Zone 55



Australian Rail Track Corporation  
Inland Rail - Narrabri to North Star

Job Number 22-17916  
Revision 0  
Date 02 Jun 2017

Operational rail noise contours, LAeq  
2020 build

Figure E1- Sheet 28

G:\2217916\GIS\Maps\Deliverables\N2NS\Noise\2217916\_N003\_NNS\_2020\_Leq\_0.mxd

Level 3, GHD Tower, 24 Honeysuckle Drive, Newcastle NSW 2300 T 61 2 4979 9999 F 61 2 4979 9988 E info@ghd.com W www.ghd.com.au

© 2017. Whilst every care has been taken to prepare this map, GHD and LPI make no representations or warranties about its accuracy, reliability, completeness or suitability for any particular purpose and cannot accept liability and responsibility of any kind (whether in contract, tort or otherwise) for any expenses, losses, damages and/or costs (including indirect or consequential damage) which are or may be incurred by any party as a result of the map being inaccurate, incomplete or unsuitable in any way and for any reason.

Data source: LPI: DTDB, 2012. LPI: Imagery, 2012. Created by: tmorton, fmacKay, kpsroba



#### LEGEND

- |   |  |  |
|---|--|--|
| <span style="color: green;">●</span> Residential receiver | <span style="color: black;">—</span> The proposal    | <span style="color: blue;">—</span> 2020 Build 60dB(A) LAeq 9-hour |
| <span style="color: brown;">●</span> Passive recreation   | <span style="color: lightblue;">—</span> Watercourse | <span style="color: red;">—</span> 2020 Build 65dB(A) LAeq 15-hour |
|   | <span style="color: yellow;">—</span> Highway        |  |
|   | <span style="color: black;">—</span> Road            |  |

Paper Size A4  
0 75 150 300 450 600  
Metres  
Map Projection: Transverse Mercator  
Horizontal Datum: GDA 1994  
Grid: GDA 1994 MGA Zone 55



Australian Rail Track Corporation  
Inland Rail - Narrabri to North Star

Job Number 22-17916  
Revision 0  
Date 02 Jun 2017

Operational rail noise contours, LAeq  
2020 build

Figure E1- Sheet 29

G:\2217916\GIS\Maps\Deliverables\N2NS\Noise\2217916\_N003\_NNS\_2020\_Leq\_0.mxd

Level 3, GHD Tower, 24 Honeysuckle Drive, Newcastle NSW 2300 T 61 2 4979 9999 F 61 2 4979 9988 E [entmail@ghd.com](mailto:entmail@ghd.com) W [www.ghd.com.au](http://www.ghd.com.au)

© 2017. Whilst every care has been taken to prepare this map, GHD and LPI make no representations or warranties about its accuracy, reliability, completeness or suitability for any particular purpose and cannot accept liability and responsibility of any kind (whether in contract, tort or otherwise) for any expenses, losses, damages and/or costs (including indirect or consequential damage) which are or may be incurred by any party as a result of the map being inaccurate, incomplete or unsuitable in any way and for any reason.

Data source: LPI: DTDB, 2012. LPI: Imagery, 2012. Created by: tmorton, fmacKay, kproba



#### LEGEND

- |   |              |                                 |
|---|--------------|---------------------------------|
| <span style="color: red;">●</span> Residential receiver | The proposal | 2020 Build 60dB(A) LAeq 9-hour  |
|   | Watercourse  | 2020 Build 65dB(A) LAeq 15-hour |
|   | Highway      |                                 |
|   | Road         |                                 |

Paper Size A4  
 0 75 150 300 450 600  
 Metres  
 Map Projection: Transverse Mercator  
 Horizontal Datum: GDA 1994  
 Grid: GDA 1994 MGA Zone 55



Australian Rail Track Corporation  
 Inland Rail - Narrabri to North Star

Job Number 22-17916  
 Revision 0  
 Date 02 Jun 2017

Operational rail noise contours, LAeq  
 2020 build

Figure E1- Sheet 30

G:\2217916\GIS\Maps\Deliverables\N2NS\Noise\2217916\_N003\_NNS\_2020\_Leq\_0.mxd

Level 3, GHD Tower, 24 Honeysuckle Drive, Newcastle NSW 2300 T 61 2 4979 9999 F 61 2 4979 9988 E ntl@mail@ghd.com W www.ghd.com.au

© 2017. Whilst every care has been taken to prepare this map, GHD and LPI make no representations or warranties about its accuracy, reliability, completeness or suitability for any particular purpose and cannot accept liability and responsibility of any kind (whether in contract, tort or otherwise) for any expenses, losses, damages and/or costs (including indirect or consequential damage) which are or may be incurred by any party as a result of the map being inaccurate, incomplete or unsuitable in any way and for any reason.

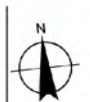
Data source: LPI: DTDB, 2012. LPI: Imagery, 2012. Created by: tmorton, fmacKay, kpsroba



#### LEGEND

- |   |              |                                 |
|---|--------------|---------------------------------|
| <span style="color: green;">●</span> Residential receiver | The proposal | 2020 Build 60dB(A) LAeq 9-hour  |
|   | Watercourse  | 2020 Build 65dB(A) LAeq 15-hour |
|   | Highway      |                                 |
|   | Road         |                                 |

Paper Size A4  
0 75 150 300 450 600  
Metres  
Map Projection: Transverse Mercator  
Horizontal Datum: GDA 1994  
Grid: GDA 1994 MGA Zone 55



Australian Rail Track Corporation  
Inland Rail - Narrabri to North Star

Job Number 22-17916  
Revision 0  
Date 02 Jun 2017

Operational rail noise contours, LAeq  
2020 build

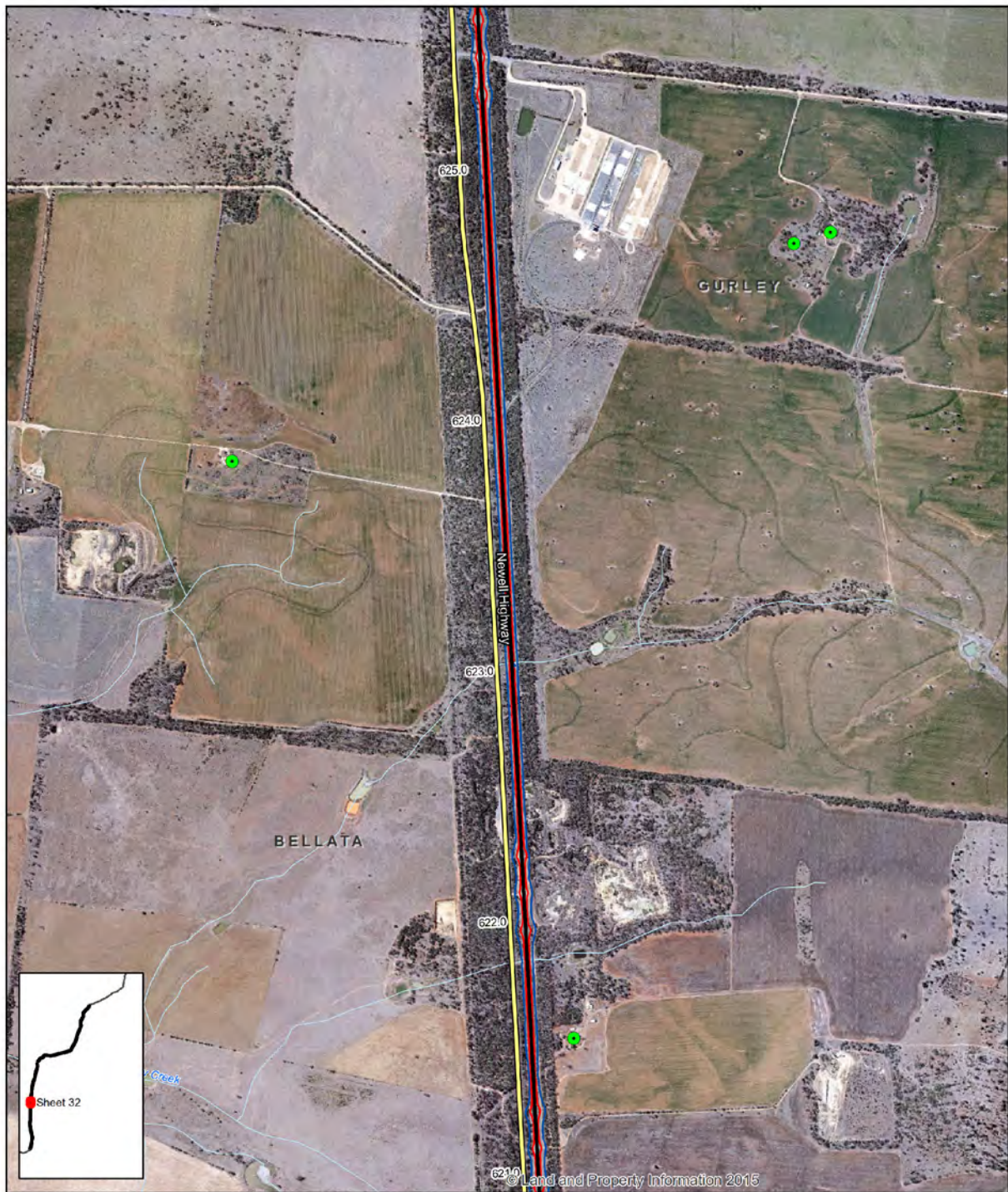
Figure E1- Sheet 31

G:\2217916\GIS\Maps\Deliverables\N2NS\Noise\2217916\_N003\_NNS\_2020\_Leq\_0.mxd

Level 3, GHD Tower, 24 Honeysuckle Drive, Newcastle NSW 2300 T 61 2 4979 9999 F 61 2 4979 9988 E [entmail@ghd.com](mailto:entmail@ghd.com) W [www.ghd.com.au](http://www.ghd.com.au)

© 2017. Whilst every care has been taken to prepare this map, GHD and LPI make no representations or warranties about its accuracy, reliability, completeness or suitability for any particular purpose and cannot accept liability and responsibility of any kind (whether in contract, tort or otherwise) for any expenses, losses, damages and/or costs (including indirect or consequential damage) which are or may be incurred by any party as a result of the map being inaccurate, incomplete or unsuitable in any way and for any reason.

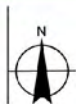
Data source: LPI: DTDB, 2012. LPI: Imagery, 2012. Created by: tmorton, fmackay, kpsroba



#### LEGEND

- |   |              |                                 |
|---|--------------|---------------------------------|
| <span style="color: green;">●</span> Residential receiver | The proposal | 2020 Build 60dB(A) LAeq 9-hour  |
|   | Watercourse  | 2020 Build 65dB(A) LAeq 15-hour |
|   | Highway      |                                 |
|   | Road         |                                 |

Paper Size A4  
0 75 150 300 450 600  
Metres  
Map Projection: Transverse Mercator  
Horizontal Datum: GDA 1994  
Grid: GDA 1994 MGA Zone 55



Australian Rail Track Corporation  
Inland Rail - Narrabri to North Star

Job Number 22-17916  
Revision 0  
Date 02 Jun 2017

Operational rail noise contours, LAeq  
2020 build

Figure E1- Sheet 32

G:\2217916\GIS\Maps\Deliverables\N2NS\Noise\2217916\_N003\_NNS\_2020\_Leq\_0.mxd

Level 3, GHD Tower, 24 Honeysuckle Drive, Newcastle NSW 2300 T 61 2 4979 9999 F 61 2 4979 9988 E ntl@mail@ghd.com W www.ghd.com.au

© 2017. Whilst every care has been taken to prepare this map, GHD and LPI make no representations or warranties about its accuracy, reliability, completeness or suitability for any particular purpose and cannot accept liability and responsibility of any kind (whether in contract, tort or otherwise) for any expenses, losses, damages and/or costs (including indirect or consequential damage) which are or may be incurred by any party as a result of the map being inaccurate, incomplete or unsuitable in any way and for any reason.

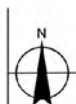
Data source: LPI: DTDB, 2012. LPI: Imagery, 2012. Created by: Imorton, fmacKay, kpsroba



#### LEGEND

- |   |              |                                 |
|---|--------------|---------------------------------|
| <span style="color: green;">●</span> Residential receiver | The proposal | 2020 Build 60dB(A) LAeq 9-hour  |
|   | Watercourse  | 2020 Build 65dB(A) LAeq 15-hour |
|   | Highway      |                                 |
|   | Road         |                                 |

Paper Size A4  
0 75 150 300 450 600  
Metres  
Map Projection: Transverse Mercator  
Horizontal Datum: GDA 1994  
Grid: GDA 1994 MGA Zone 55



Australian Rail Track Corporation  
Inland Rail - Narrabri to North Star

Job Number 22-17916  
Revision 0  
Date 02 Jun 2017

Operational rail noise contours, LAeq  
2020 build

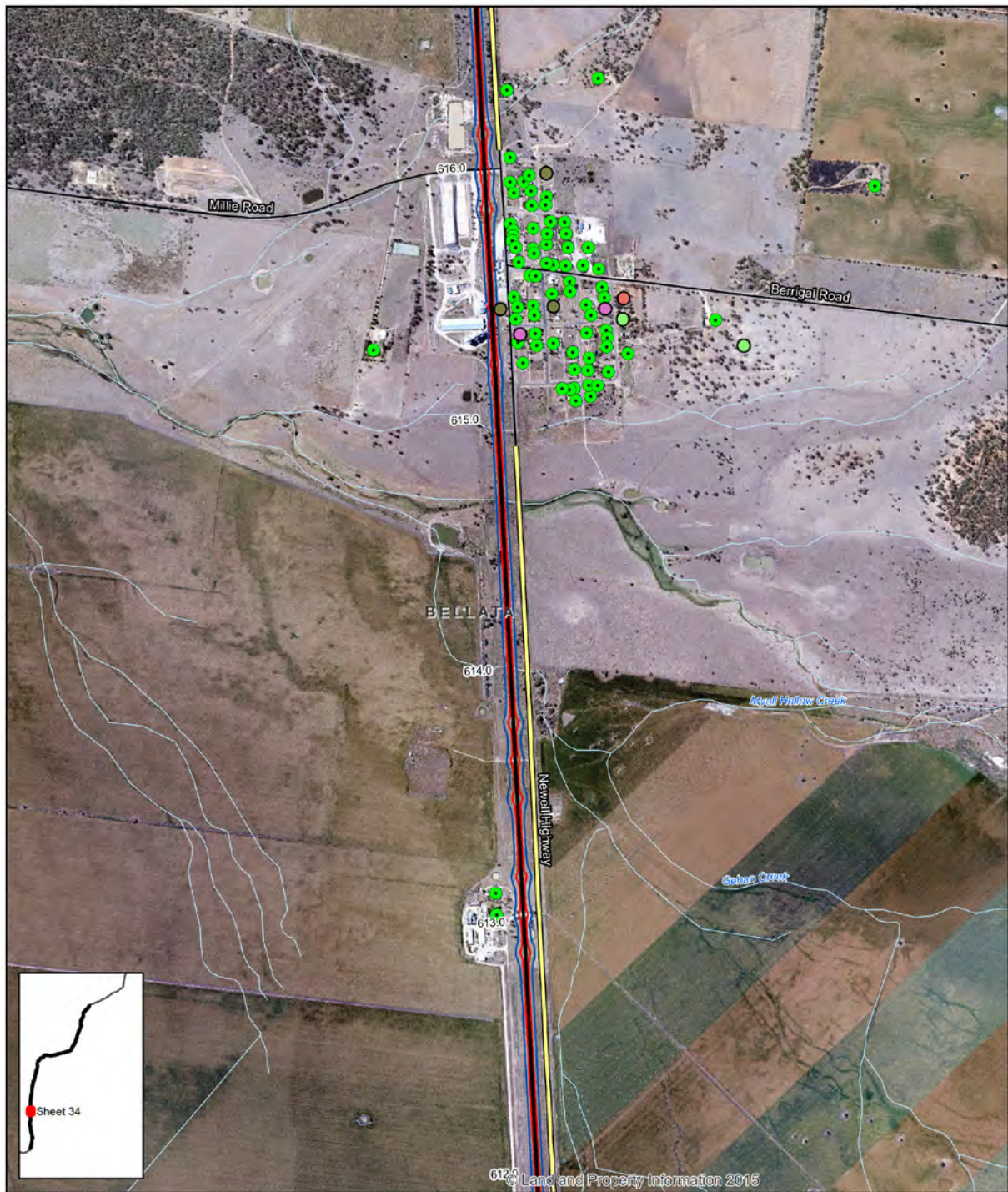
Figure E1- Sheet 33

G:\2217916\GIS\Maps\Deliverables\N2NS\Noise\2217916\_N003\_NNS\_2020\_Leq\_0.mxd

Level 3, GHD Tower, 24 Honeysuckle Drive, Newcastle NSW 2300 T 61 2 4979 9999 F 61 2 4979 9988 E ntl@mail@ghd.com W www.ghd.com.au

© 2017. Whilst every care has been taken to prepare this map, GHD and LPI make no representations or warranties about its accuracy, reliability, completeness or suitability for any particular purpose and cannot accept liability and responsibility of any kind (whether in contract, tort or otherwise) for any expenses, losses, damages and/or costs (including indirect or consequential damage) which are or may be incurred by any party as a result of the map being inaccurate, incomplete or unsuitable in any way and for any reason.

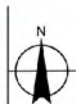
Data source: LPI: DTDB, 2012. LPI: Imagery, 2012. Created by: tmorton, fmacKay, kpsroba



#### LEGEND

- |   |   |   |  |
|---|---|---|--|
| <span style="color: green;">●</span> Residential receiver | <span style="color: brown;">●</span> Passive recreation | <span style="color: black;">—</span> The proposal | <span style="color: blue;">—</span> 2020 Build 60dB(A) LAeq 9-hour |
| <span style="color: green;">●</span> Active recreation    | <span style="color: purple;">●</span> Religious         | <span style="color: blue;">—</span> Watercourse   | <span style="color: red;">—</span> 2020 Build 65dB(A) LAeq 15-hour |
| <span style="color: red;">●</span> Education              |   | <span style="color: yellow;">—</span> Highway     |  |
|   |   | <span style="color: black;">—</span> Road         |  |

Paper Size A4  
0 75 150 300 450 600  
Metres  
Map Projection: Transverse Mercator  
Horizontal Datum: GDA 1994  
Grid: GDA 1994 MGA Zone 55



Australian Rail Track Corporation  
Inland Rail - Narrabri to North Star

Job Number 22-17916  
Revision 0  
Date 02 Jun 2017

Operational rail noise contours, LAeq  
2020 build

Figure E1- Sheet 34

G:\2217916\GIS\Maps\Deliverables\N2NS\Noise\2217916\_N003\_NNS\_2020\_Leq\_0.mxd

Level 3, GHD Tower, 24 Honeysuckle Drive, Newcastle NSW 2300 T 61 2 4979 9999 F 61 2 4979 9988 E ntl@mail@ghd.com W www.ghd.com.au

© 2017. Whilst every care has been taken to prepare this map, GHD and LPI make no representations or warranties about its accuracy, reliability, completeness or suitability for any particular purpose and cannot accept liability and responsibility of any kind (whether in contract, tort or otherwise) for any expenses, losses, damages and/or costs (including indirect or consequential damage) which are or may be incurred by any party as a result of the map being inaccurate, incomplete or unsuitable in any way and for any reason.

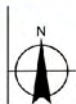
Data source: LPI: DTDB, 2012. LPI: Imagery, 2012. Created by: tmorton, fmacKay, kpsroba



#### LEGEND

- Residential receiver
- The proposal
- 2020 Build 60dB(A) LAeq 9-hour
- Watercourse
- Highway
- Road
- 2020 Build 65dB(A) LAeq 15-hour

Paper Size A4  
0 75 150 300 450 600  
Metres  
Map Projection: Transverse Mercator  
Horizontal Datum: GDA 1994  
Grid: GDA 1994 MGA Zone 55



Australian Rail Track Corporation  
Inland Rail - Narrabri to North Star

Job Number 22-17916  
Revision 0  
Date 02 Jun 2017

Operational rail noise contours, LAeq  
2020 build

Figure E1- Sheet 35

G:\2217916\GIS\Maps\Deliverables\N2NS\Noise\2217916\_N003\_NNS\_2020\_Leq\_0.mxd

Level 3, GHD Tower, 24 Honeysuckle Drive, Newcastle NSW 2300 T 61 2 4979 9999 F 61 2 4979 9988 E nt@mail@ghd.com W www.ghd.com.au

© 2017. Whilst every care has been taken to prepare this map, GHD and LPI make no representations or warranties about its accuracy, reliability, completeness or suitability for any particular purpose and cannot accept liability and responsibility of any kind (whether in contract, tort or otherwise) for any expenses, losses, damages and/or costs (including indirect or consequential damage) which are or may be incurred by any party as a result of the map being inaccurate, incomplete or unsuitable in any way and for any reason.

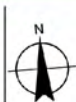
Data source: LPI: DTDB, 2012. LPI: Imagery, 2012. Created by: tmorton, fmackay, kpsroba



#### LEGEND

- |   |              |                                 |
|---|--------------|---------------------------------|
| <span style="color: green;">●</span> Residential receiver | The proposal | 2020 Build 60dB(A) LAeq 9-hour  |
|   | Watercourse  | 2020 Build 65dB(A) LAeq 15-hour |
|   | Highway      |                                 |
|   | Road         |                                 |

Paper Size A4  
 0 75 150 300 450 600  
 Metres  
 Map Projection: Transverse Mercator  
 Horizontal Datum: GDA 1994  
 Grid: GDA 1994 MGA Zone 55



Australian Rail Track Corporation  
 Inland Rail - Narrabri to North Star

Job Number 22-17916  
 Revision 0  
 Date 02 Jun 2017

Operational rail noise contours, LAeq  
 2020 build

Figure E1- Sheet 36

G:\2217916\GIS\Maps\Deliverables\N2NS\Noise\2217916\_N003\_NNS\_2020\_Leq\_0.mxd

Level 3, GHD Tower, 24 Honeysuckle Drive, Newcastle NSW 2300 T 61 2 4979 9999 F 61 2 4979 9988 E [ent@mail@ghd.com](mailto:ent@mail@ghd.com) W [www.ghd.com.au](http://www.ghd.com.au)

© 2017. Whilst every care has been taken to prepare this map, GHD and LPI make no representations or warranties about its accuracy, reliability, completeness or suitability for any particular purpose and cannot accept liability and responsibility of any kind (whether in contract, tort or otherwise) for any expenses, losses, damages and/or costs (including indirect or consequential damage) which are or may be incurred by any party as a result of the map being inaccurate, incomplete or unsuitable in any way and for any reason.

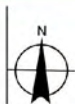
Data source: LPI: DTDB, 2012. LPI: Imagery, 2012. Created by: Imorton, fmacKay, kpsroba



#### LEGEND

- |   |              |                                 |
|---|--------------|---------------------------------|
| <span style="color: green;">●</span> Residential receiver | The proposal | 2020 Build 60dB(A) LAeq 9-hour  |
|   | Watercourse  | 2020 Build 65dB(A) LAeq 15-hour |
|   | Highway      |                                 |
|   | Road         |                                 |

Paper Size A4  
0 75 150 300 450 600  
Metres  
Map Projection: Transverse Mercator  
Horizontal Datum: GDA 1994  
Grid: GDA 1994 MGA Zone 55



Australian Rail Track Corporation  
Inland Rail - Narrabri to North Star

Job Number 22-17916  
Revision 0  
Date 02 Jun 2017

Operational rail noise contours, LAeq  
2020 build

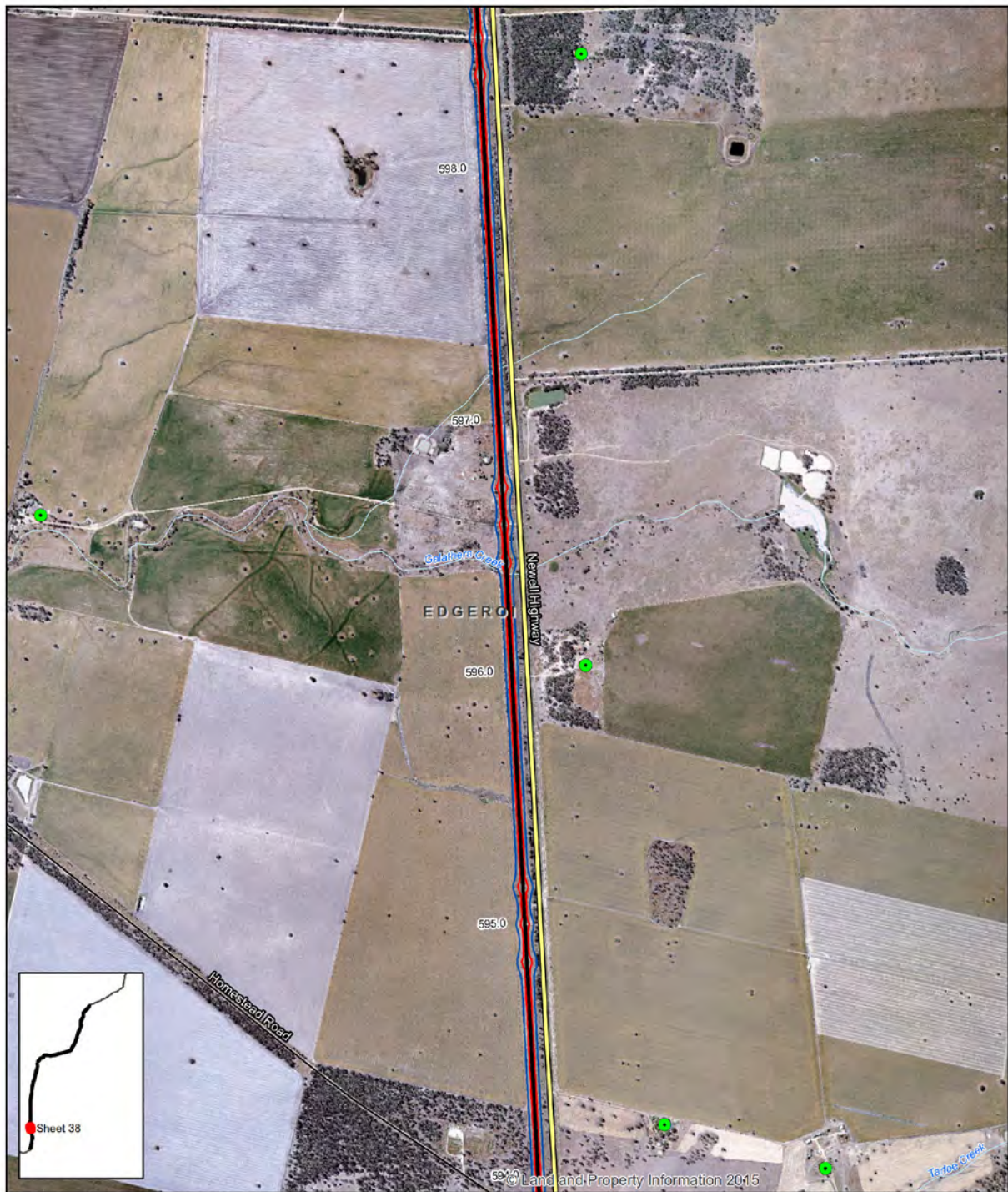
Figure E1- Sheet 37

G:\2217916\GIS\Maps\Deliverables\N2NS\Noise\2217916\_N003\_NNS\_2020\_Leq\_0.mxd

Level 3, GHD Tower, 24 Honeysuckle Drive, Newcastle NSW 2300 T 61 2 4979 9999 F 61 2 4979 9988 E [ent@mail@ghd.com](mailto:ent@mail@ghd.com) W [www.ghd.com.au](http://www.ghd.com.au)

© 2017. Whilst every care has been taken to prepare this map, GHD and LPI make no representations or warranties about its accuracy, reliability, completeness or suitability for any particular purpose and cannot accept liability and responsibility of any kind (whether in contract, tort or otherwise) for any expenses, losses, damages and/or costs (including indirect or consequential damage) which are or may be incurred by any party as a result of the map being inaccurate, incomplete or unsuitable in any way and for any reason.

Data source: LPI: DTDB, 2012. LPI: Imagery, 2012. Created by: Imorton, fmacKay, kpsroba



#### LEGEND

- |   |              |                                 |
|---|--------------|---------------------------------|
| <span style="color: green;">●</span> Residential receiver | The proposal | 2020 Build 60dB(A) LAeq 9-hour  |
|   | Watercourse  | 2020 Build 65dB(A) LAeq 15-hour |
|   | Highway      |                                 |
|   | Road         |                                 |

Paper Size A4  
 0 75 150 300 450 600  
 Metres  
 Map Projection: Transverse Mercator  
 Horizontal Datum: GDA 1994  
 Grid: GDA 1994 MGA Zone 55



Australian Rail Track Corporation  
 Inland Rail - Narrabri to North Star

Job Number 22-17916  
 Revision 0  
 Date 02 Jun 2017

Operational rail noise contours, LAeq  
 2020 build

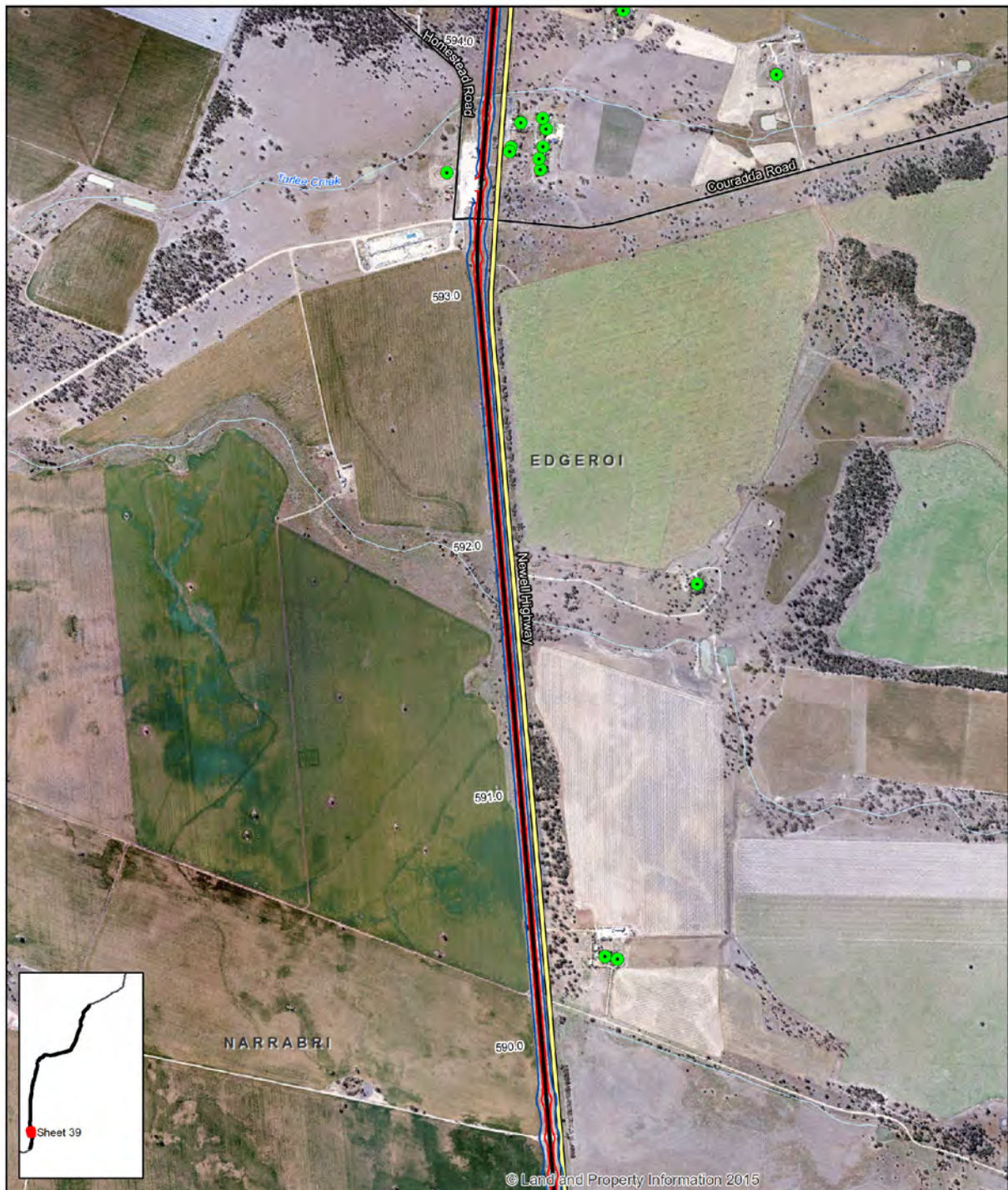
Figure E1- Sheet 38

G:\2217916\GIS\Maps\Deliverables\N2NS\Noise\2217916\_N003\_NNS\_2020\_Leq\_0.mxd

Level 3, GHD Tower, 24 Honeysuckle Drive, Newcastle NSW 2300 T 61 2 4979 9999 F 61 2 4979 9988 E [entl@mail@ghd.com](mailto:entl@mail@ghd.com) W [www.ghd.com.au](http://www.ghd.com.au)

© 2017. Whilst every care has been taken to prepare this map, GHD and LPI make no representations or warranties about its accuracy, reliability, completeness or suitability for any particular purpose and cannot accept liability and responsibility of any kind (whether in contract, tort or otherwise) for any expenses, losses, damages and/or costs (including indirect or consequential damage) which are or may be incurred by any party as a result of the map being inaccurate, incomplete or unsuitable in any way and for any reason.

Data source: LPI: DTDB, 2012. LPI: Imagery, 2012. Created by: tmorton, fmacKay, kpsroba



#### LEGEND

- |   |   |  |
|---|---|--|
| <span style="color: green;">●</span> Residential receiver | <span style="color: black;">—</span> The proposal | <span style="color: blue;">—</span> 2020 Build 60dB(A) LAeq 9-hour |
|   | <span style="color: blue;">—</span> Watercourse   | <span style="color: red;">—</span> 2020 Build 65dB(A) LAeq 15-hour |
|   | <span style="color: yellow;">—</span> Highway     |  |
|   | <span style="color: black;">—</span> Road         |  |

Paper Size A4  
0 75 150 300 450 600  
Metres  
Map Projection: Transverse Mercator  
Horizontal Datum: GDA 1994  
Grid: GDA 1994 MGA Zone 55



Australian Rail Track Corporation  
Inland Rail - Narrabri to North Star

Job Number 22-17916  
Revision 0  
Date 02 Jun 2017

Operational rail noise contours, LAeq  
2020 build

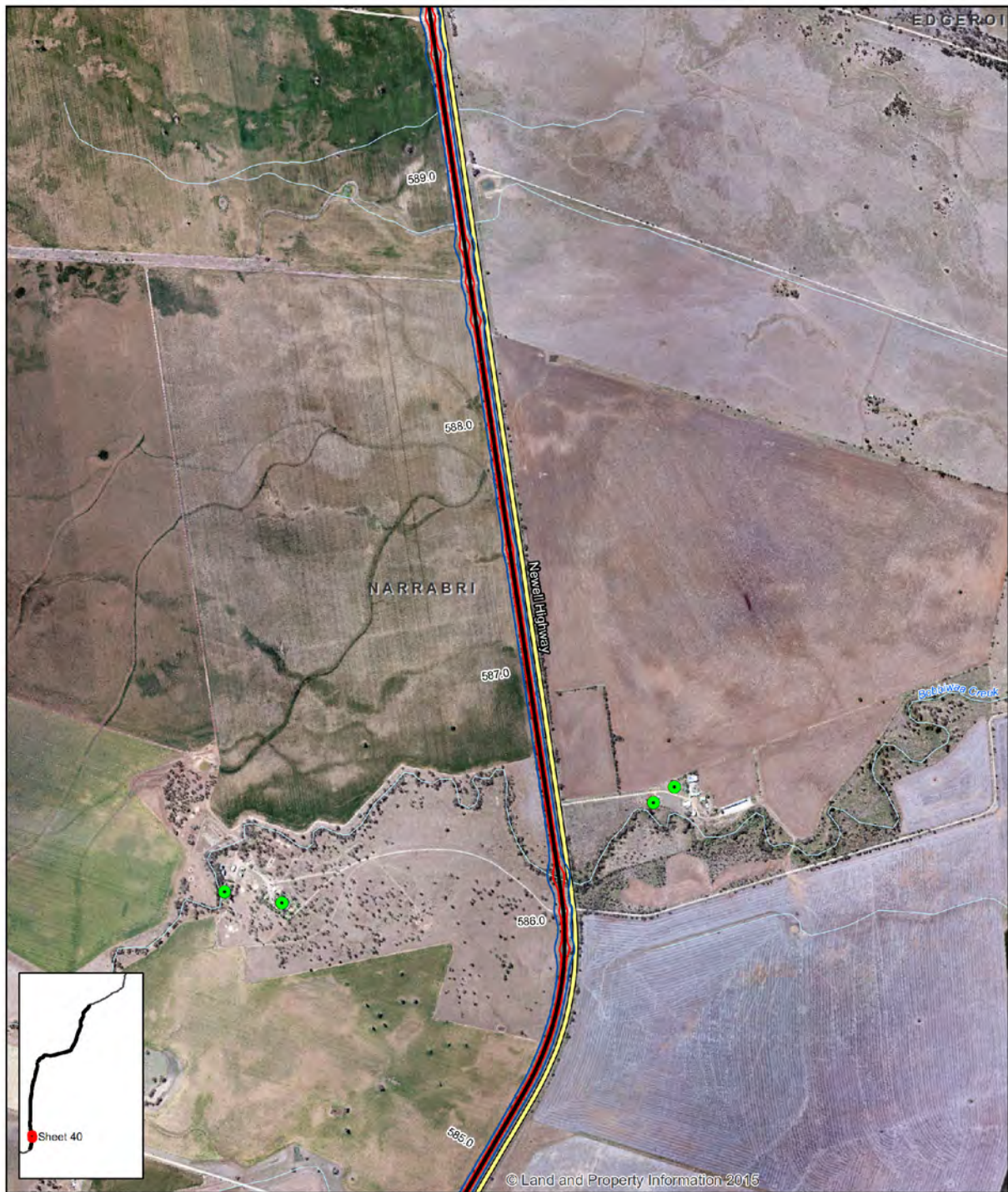
Figure E1- Sheet 39

G:\2217916\GIS\Maps\Deliverables\N2NS\Noise\2217916\_N003\_NNS\_2020\_Leq\_0.mxd

Level 3, GHD Tower, 24 Honeysuckle Drive, Newcastle NSW 2300 T 61 2 4979 9999 F 61 2 4979 9988 E ntl@mail@ghd.com W www.ghd.com.au

© 2017. Whilst every care has been taken to prepare this map, GHD and LPI make no representations or warranties about its accuracy, reliability, completeness or suitability for any particular purpose and cannot accept liability and responsibility of any kind (whether in contract, tort or otherwise) for any expenses, losses, damages and/or costs (including indirect or consequential damage) which are or may be incurred by any party as a result of the map being inaccurate, incomplete or unsuitable in any way and for any reason.

Data source: LPI: DTDB, 2012. LPI: Imagery, 2012. Created by: tmorton, fmacKay, kpsroba



#### LEGEND

- Residential receiver
- The proposal
- 2020 Build 60dB(A) LAeq 9-hour
- Watercourse
- 2020 Build 65dB(A) LAeq 15-hour
- Highway
- Road

Paper Size A4  
0 75 150 300 450 600  
Metres  
Map Projection: Transverse Mercator  
Horizontal Datum: GDA 1994  
Grid: GDA 1994 MGA Zone 55



Australian Rail Track Corporation  
Inland Rail - Narrabri to North Star

Job Number 22-17916  
Revision 0  
Date 02 Jun 2017

Operational rail noise contours, LAeq  
2020 build

Figure E1- Sheet 40

G:\2217916\GIS\Maps\Deliverables\N2NS\Noise\2217916\_N003\_NNS\_2020\_Leq\_0.mxd

Level 3, GHD Tower, 24 Honeysuckle Drive, Newcastle NSW 2300 T 61 2 4979 9999 F 61 2 4979 9988 E ntlmail@ghd.com W www.ghd.com.au

© 2017. Whilst every care has been taken to prepare this map, GHD and LPI make no representations or warranties about its accuracy, reliability, completeness or suitability for any particular purpose and cannot accept liability and responsibility of any kind (whether in contract, tort or otherwise) for any expenses, losses, damages and/or costs (including indirect or consequential damage) which are or may be incurred by any party as a result of the map being inaccurate, incomplete or unsuitable in any way and for any reason.

Data source: LPI: DTDB, 2012. LPI: Imagery, 2012. Created by: tmorton, fmacKay, kpsroba



#### LEGEND

- Residential receiver
- The proposal
- 2020 Build 60dB(A) LAeq 9-hour
- Watercourse
- 2020 Build 65dB(A) LAeq 15-hour
- Highway
- Road

Paper Size A4  
0 75 150 300 450 600  
Metres  
Map Projection: Transverse Mercator  
Horizontal Datum: GDA 1994  
Grid: GDA 1994 MGA Zone 55



Australian Rail Track Corporation  
Inland Rail - Narrabri to North Star

Job Number 22-17916  
Revision 0  
Date 02 Jun 2017

Operational rail noise contours, LAeq  
2020 build

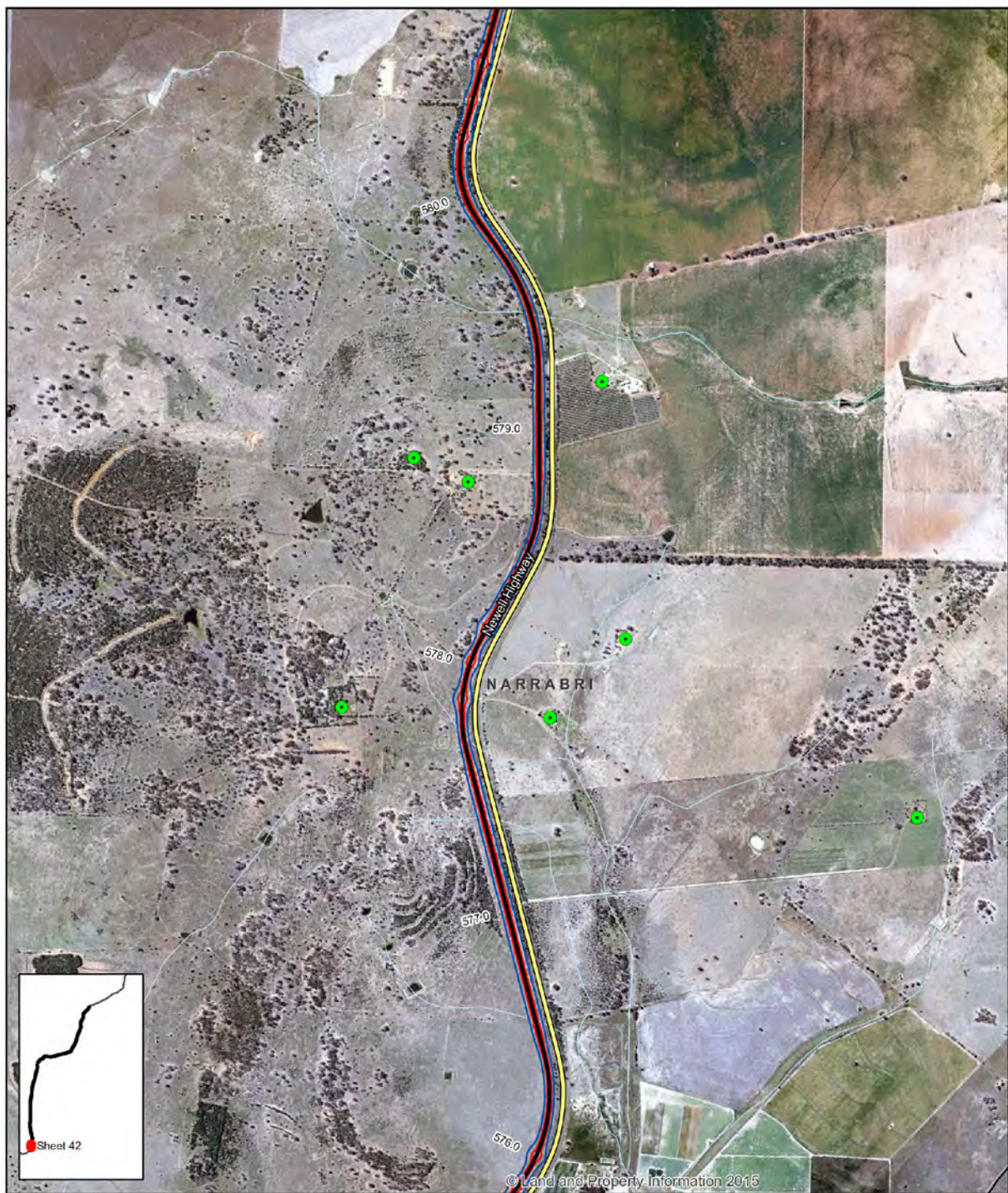
Figure E1- Sheet 41

G:\2217916\GIS\Maps\Deliverables\N2NS\Noise\2217916\_N003\_NNS\_2020\_Leq\_0.mxd

Level 3, GHD Tower, 24 Honeysuckle Drive, Newcastle NSW 2300 T 61 2 4979 9999 F 61 2 4979 9988 E [entmail@ghd.com](mailto:entmail@ghd.com) W [www.ghd.com.au](http://www.ghd.com.au)

© 2017. Whilst every care has been taken to prepare this map, GHD and LPI make no representations or warranties about its accuracy, reliability, completeness or suitability for any particular purpose and cannot accept liability and responsibility of any kind (whether in contract, tort or otherwise) for any expenses, losses, damages and/or costs (including indirect or consequential damage) which are or may be incurred by any party as a result of the map being inaccurate, incomplete or unsuitable in any way and for any reason.

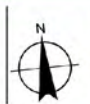
Data source: LPI: DTDB, 2012. LPI: Imagery, 2012. Created by: Imorton, fmacKay, kpsroba



#### LEGEND

- |   |              |                                 |
|---|--------------|---------------------------------|
| <span style="color: green;">●</span> Residential receiver | The proposal | 2020 Build 60dB(A) LAeq 9-hour  |
|   | Watercourse  | 2020 Build 65dB(A) LAeq 15-hour |
|   | Highway      |                                 |
|   | Road         |                                 |

Paper Size A4  
 0 75 150 300 450 600  
 Metres  
 Map Projection: Transverse Mercator  
 Horizontal Datum: GDA 1994  
 Grid: GDA 1994 MGA Zone 55



Australian Rail Track Corporation  
 Inland Rail - Narrabri to North Star

Job Number | 22-17916  
 Revision | 0  
 Date | 02 Jun 2017

Operational rail noise contours, LAeq  
 2020 build

Figure E1- Sheet 42

G:\2217916\GIS\Maps\Deliverables\N2NS\Noise\2217916\_N003\_NNS\_2020\_Leq\_0.mxd

Level 3, GHD Tower, 24 Honeysuckle Drive, Newcastle NSW 2300 T 61 2 4979 9999 F 61 2 4979 9988 E info@ghd.com W www.ghd.com.au

© 2017. Whilst every care has been taken to prepare this map, GHD and LPI make no representations or warranties about its accuracy, reliability, completeness or suitability for any particular purpose and cannot accept liability and responsibility of any kind (whether in contract, tort or otherwise) for any expenses, losses, damages and/or costs (including indirect or consequential damage) which are or may be incurred by any party as a result of the map being inaccurate, incomplete or unsuitable in any way and for any reason.

Data source: LPI: DTDB, 2012. LPI: Imagery, 2012. Created by: tmorton, fmacKay, kpsroba



#### LEGEND

- |   |  |  |
|---|--|--|
| <span style="color: green;">●</span> Residential receiver | <span style="color: black;">—</span> The proposal    | <span style="color: blue;">—</span> 2020 Build 60dB(A) LAeq 9-hour |
|   | <span style="color: lightblue;">—</span> Watercourse | <span style="color: red;">—</span> 2020 Build 65dB(A) LAeq 15-hour |
|   | <span style="color: yellow;">—</span> Highway        |  |
|   | <span style="color: black;">—</span> Road            |  |

Paper Size A4  
0 75 150 300 450 600  
Metres  
Map Projection: Transverse Mercator  
Horizontal Datum: GDA 1994  
Grid: GDA 1994 MGA Zone 55



Australian Rail Track Corporation  
Inland Rail - Narrabri to North Star

Job Number | 22-17916  
Revision | 0  
Date | 02 Jun 2017

Operational rail noise contours, LAeq  
2020 build

Figure E1- Sheet 43

G:\2217916\GIS\Maps\Deliverables\N2NS\Noise\2217916\_N003\_NNS\_2020\_Leq\_0.mxd

Level 3, GHD Tower, 24 Honeysuckle Drive, Newcastle NSW 2300 T 61 2 4979 9999 F 61 2 4979 9988 E [ent@mail@ghd.com](mailto:ent@mail@ghd.com) W [www.ghd.com.au](http://www.ghd.com.au)

© 2017. Whilst every care has been taken to prepare this map, GHD and LPI make no representations or warranties about its accuracy, reliability, completeness or suitability for any particular purpose and cannot accept liability and responsibility of any kind (whether in contract, tort or otherwise) for any expenses, losses, damages and/or costs (including indirect or consequential damage) which are or may be incurred by any party as a result of the map being inaccurate, incomplete or unsuitable in any way and for any reason.

Data source: LPI: DTDB, 2012. LPI: Imagery, 2012. Created by: Imorton, fmacKay, kpsroba



#### LEGEND

- |   |   |  |  |
|---|---|--|--|
| <span style="color: green;">●</span> Residential receiver | <span style="color: brown;">●</span> Passive recreation | <span style="color: black;">—</span> The proposal    | <span style="color: blue;">—</span> 2025 Build 60dB(A) LAeq 9-hour |
| <span style="color: green;">○</span> Active recreation    | <span style="color: purple;">●</span> Religious         | <span style="color: lightblue;">—</span> Watercourse | <span style="color: red;">—</span> 2025 Build 65dB(A) LAeq 15-hour |
| <span style="color: red;">●</span> Education              |   | <span style="color: black;">—</span> Road            |  |

Paper Size A4  
0 75 150 300 450 600  
Metres  
Map Projection: Transverse Mercator  
Horizontal Datum: GDA 1994  
Grid: GDA 1994 MGA Zone 55



Australian Rail Track Corporation  
Inland Rail - Narrabri to North Star

Job Number 22-17916  
Revision 0  
Date 02 Jun 2017

Operational rail noise contours, LAeq  
2025 build vs 2025 no build

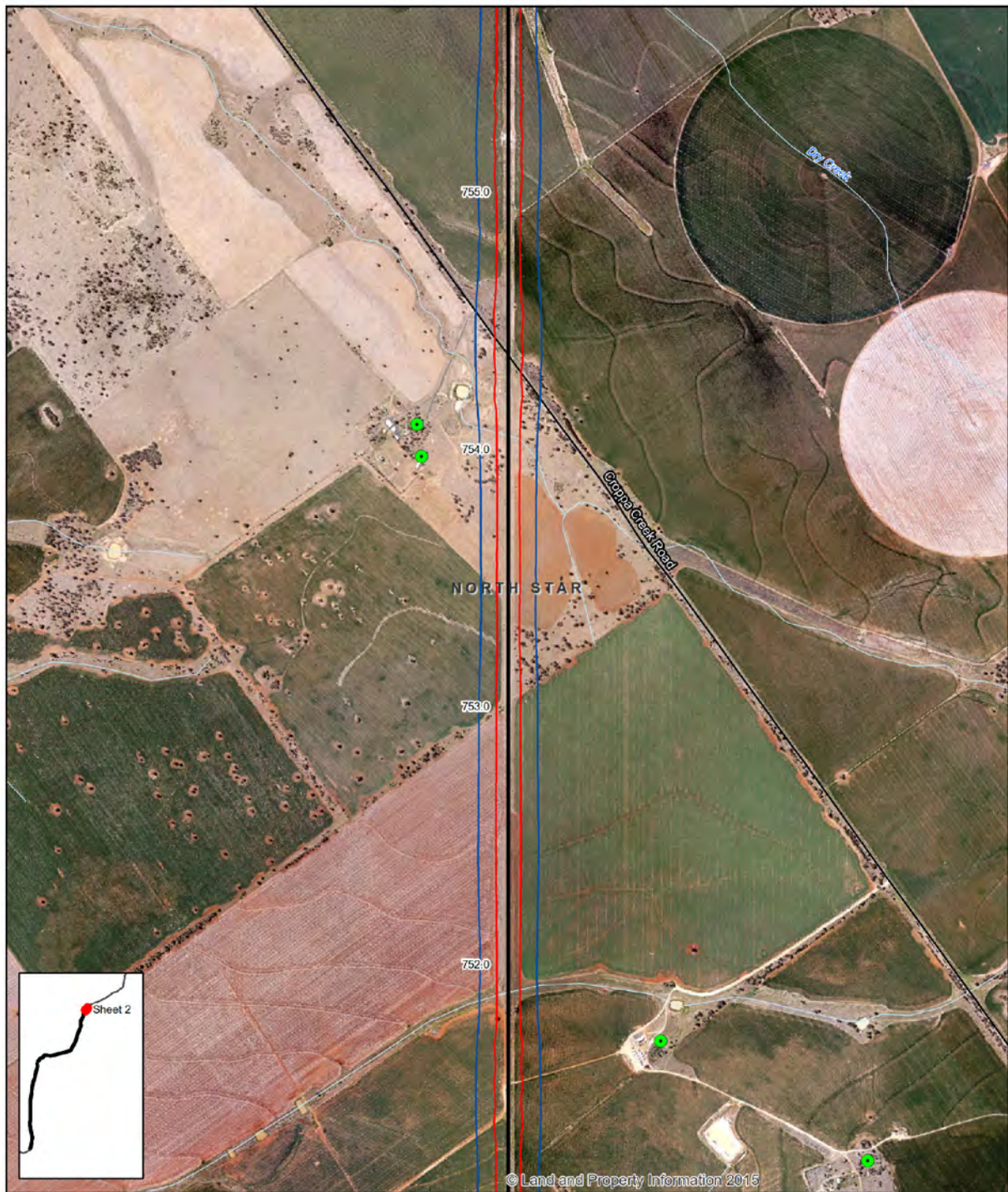
Figure E2- Sheet 1

G:\2217916\GIS\Maps\Deliverables\N2NS\Noise\2217916\_N004\_NNS\_2025\_Leq\_0.mxd

Level 3, GHD Tower, 24 Honeysuckle Drive, Newcastle NSW 2300 T 61 2 4979 9999 F 61 2 4979 9988 E ntlmail@ghd.com W www.ghd.com.au

© 2017. Whilst every care has been taken to prepare this map, GHD and LPI make no representations or warranties about its accuracy, reliability, completeness or suitability for any particular purpose and cannot accept liability and responsibility of any kind (whether in contract, tort or otherwise) for any expenses, losses, damages and/or costs (including indirect or consequential damage) which are or may be incurred by any party as a result of the map being inaccurate, incomplete or unsuitable in any way and for any reason.

Data source: LPI: DTDB, 2012. LPI: Imagery, 2012. Created by: tmorton, fmacKay, kpsroba



#### LEGEND

- Residential receiver
- The proposal
- 2025 Build 60dB(A) LAeq 9-hour
- Watercourse
- 2025 Build 65dB(A) LAeq 15-hour
- Road

Paper Size A4  
0 75 150 300 450 600  
Metres  
Map Projection: Transverse Mercator  
Horizontal Datum: GDA 1994  
Grid: GDA 1994 MGA Zone 55



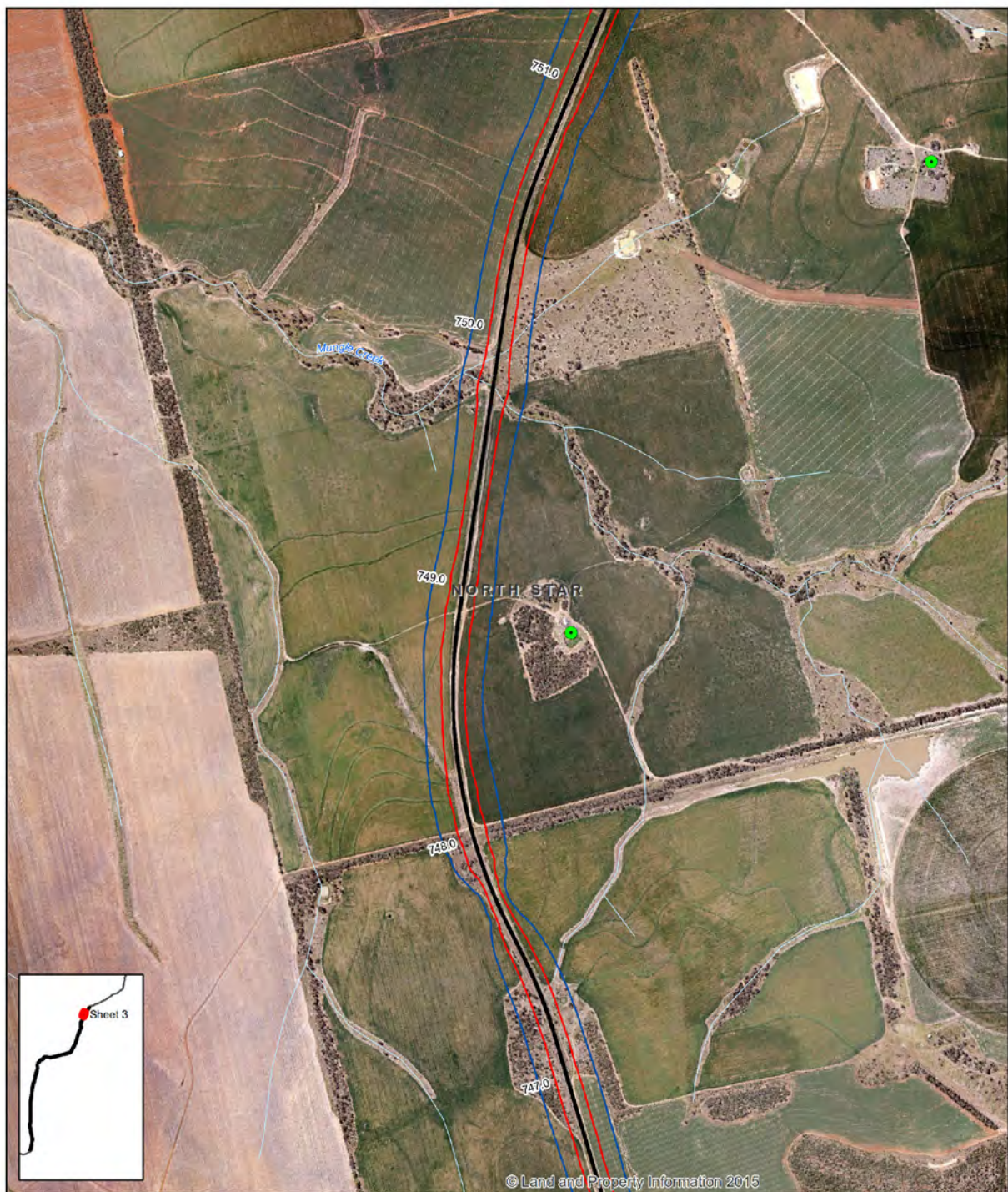
Australian Rail Track Corporation  
Inland Rail - Narrabri to North Star

Job Number | 22-17916  
Revision | 0  
Date | 02 Jun 2017

Operational rail noise contours, LAeq  
2025 build vs 2025 no build

Figure E2- Sheet 2

G:\2217916\GIS\Maps\Deliverables\N2NS\Noise\2217916\_N004\_NNS\_2025\_Leq\_0.mxd Level 3, GHD Tower, 24 Honeysuckle Drive, Newcastle NSW 2300 T 61 2 4979 9999 F 61 2 4979 9988 E ntina@ghd.com W www.ghd.com.au  
© 2017. Whilst every care has been taken to prepare this map, GHD and LPI make no representations or warranties about its accuracy, reliability, completeness or suitability for any particular purpose and cannot accept liability and responsibility of any kind (whether in contract, tort or otherwise) for any expenses, losses, damages and/or costs (including indirect or consequential damage) which are or may be incurred by any party as a result of the map being inaccurate, incomplete or unsuitable in any way and for any reason.  
Data source: LPI: DTDB, 2012. LPI: Imagery, 2012. Created by: tmorton, fmacKay, kpsroba



#### LEGEND

- Residential receiver
- The proposal
- 2025 Build 60dB(A) LAeq 9-hour
- Watercourse
- 2025 Build 65dB(A) LAeq 15-hour

Paper Size A4  
0 75 150 300 450 600  
Metres  
Map Projection: Transverse Mercator  
Horizontal Datum: GDA 1994  
Grid: GDA 1994 MGA Zone 55



Australian Rail Track Corporation  
Inland Rail - Narrabri to North Star

Job Number | 22-17916  
Revision | 0  
Date | 02 Jun 2017

Operational rail noise contours, LAeq  
2025 build vs 2025 no build

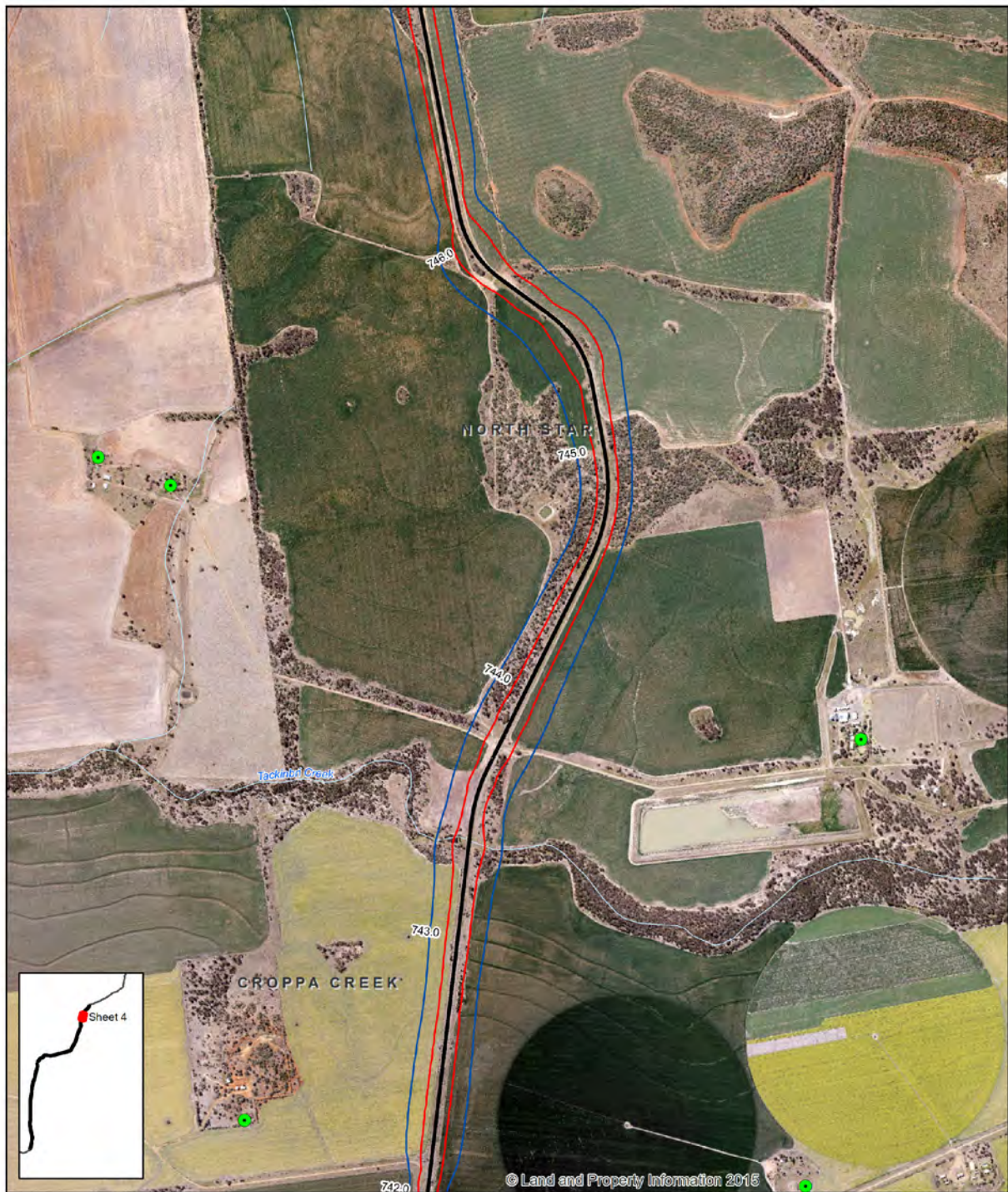
**Figure E2- Sheet 3**

G:\2217916\GIS\Maps\Deliverables\N2NS\Noise\2217916\_N004\_NNS\_2025\_Leq\_0.mxd

Level 3, GHD Tower, 24 Honeysuckle Drive, Newcastle NSW 2300 T 61 2 4979 9999 F 61 2 4979 9988 E nt@mail@ghd.com W www.ghd.com.au

© 2017. Whilst every care has been taken to prepare this map, GHD and LPI make no representations or warranties about its accuracy, reliability, completeness or suitability for any particular purpose and cannot accept liability and responsibility of any kind (whether in contract, tort or otherwise) for any expenses, losses, damages and/or costs (including indirect or consequential damage) which are or may be incurred by any party as a result of the map being inaccurate, incomplete or unsuitable in any way and for any reason.

Data source: LPI: DTDB, 2012. LPI: Imagery, 2012. Created by: tmorton, fmacKay, kpsroba



#### LEGEND

- Residential receiver
- The proposal
- 2025 Build 60dB(A) LAeq 9-hour
- Watercourse
- 2025 Build 65dB(A) LAeq 15-hour

Paper Size A4  
0 75 150 300 450 600  
Metres  
Map Projection: Transverse Mercator  
Horizontal Datum: GDA 1994  
Grid: GDA 1994 MGA Zone 55



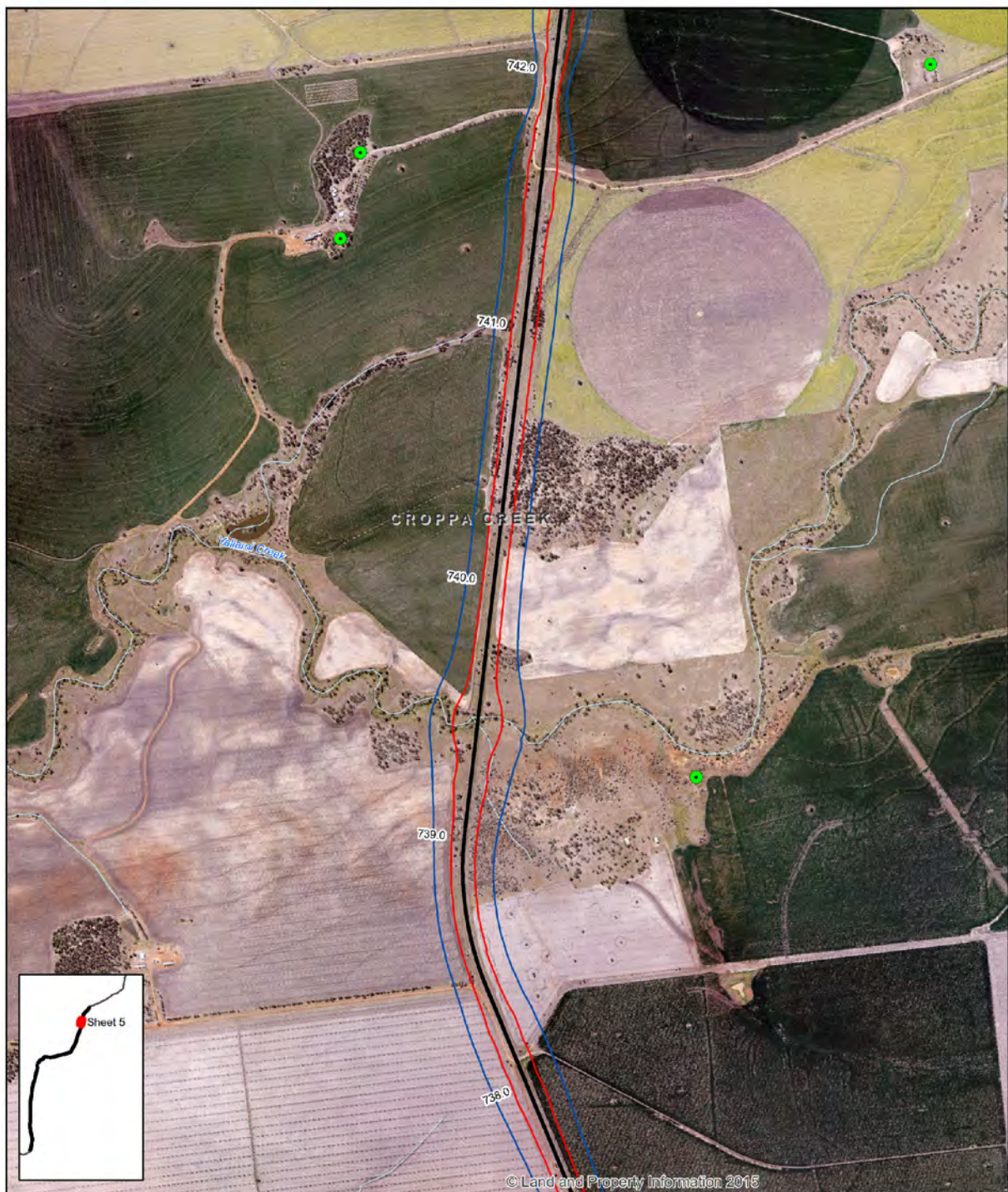
Australian Rail Track Corporation  
Inland Rail - Narrabri to North Star

Job Number 22-17916  
Revision 0  
Date 02 Jun 2017

Operational rail noise contours, LAeq  
2025 build vs 2025 no build

Figure E2- Sheet 4

G:\2217916\GIS\Maps\Deliverables\N2NS\Noise\2217916\_N004\_NNS\_2025\_Leq\_0.mxd Level 3, GHD Tower, 24 Honeysuckle Drive, Newcastle NSW 2300 T 61 2 4979 9999 F 61 2 4979 9988 E ntl@mail@ghd.com W www.ghd.com.au  
© 2017. Whilst every care has been taken to prepare this map, GHD and LPI make no representations or warranties about its accuracy, reliability, completeness or suitability for any particular purpose and cannot accept liability and responsibility of any kind (whether in contract, tort or otherwise) for any expenses, losses, damages and/or costs (including indirect or consequential damage) which are or may be incurred by any party as a result of the map being inaccurate, incomplete or unsuitable in any way and for any reason.  
Data source: LPI: DTDB, 2012. LPI: Imagery, 2012. Created by: tmorton, fmacKay, kpsroba



#### LEGEND

- Residential receiver
- The proposal
- 2025 Build 60dB(A) LAeq 9-hour
- Watercourse
- 2025 Build 65dB(A) LAeq 15-hour

Paper Size A4  
0 75 150 300 450 600  
Metres  
Map Projection: Transverse Mercator  
Horizontal Datum: GDA 1994  
Grid: GDA 1994 MGA Zone 55



Australian Rail Track Corporation  
Inland Rail - Narrabri to North Star

Job Number 22-17916  
Revision 0  
Date 02 Jun 2017

Operational rail noise contours, LAeq  
2025 build vs 2025 no build

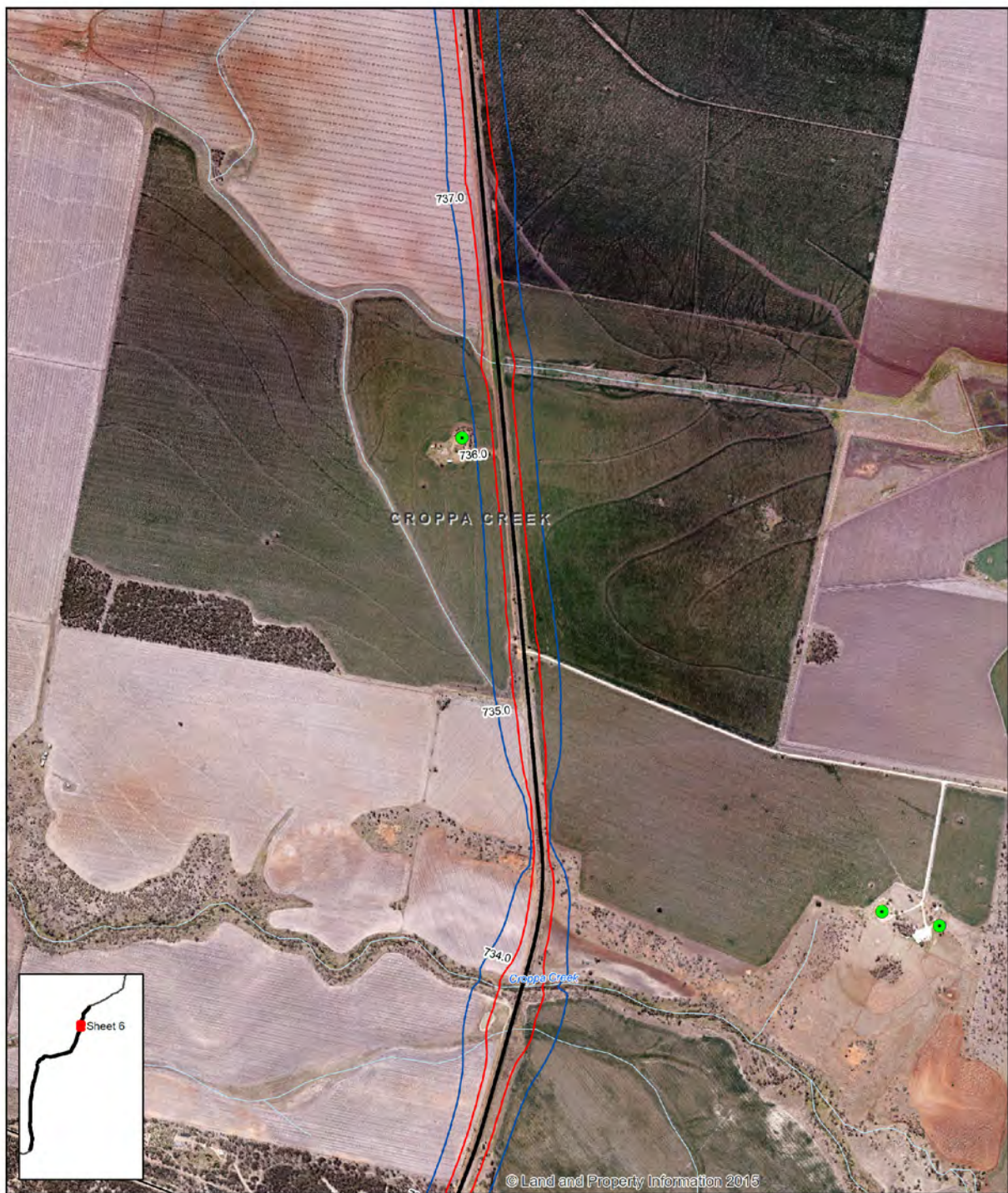
Figure E2- Sheet 5

G:\2217916\GIS\Maps\Deliverables\N2NS\Noise\2217916\_N004\_NNS\_2025\_Leq\_0.mxd

Level 3, GHD Tower, 24 Honeysuckle Drive, Newcastle NSW 2300 T 61 2 4979 9999 F 61 2 4979 9988 E ntl@mail@ghd.com W www.ghd.com.au

© 2017. Whilst every care has been taken to prepare this map, GHD and LPI make no representations or warranties about its accuracy, reliability, completeness or suitability for any particular purpose and cannot accept liability and responsibility of any kind (whether in contract, tort or otherwise) for any expenses, losses, damages and/or costs (including indirect or consequential damage) which are or may be incurred by any party as a result of the map being inaccurate, incomplete or unsuitable in any way and for any reason.

Data source: LPI: DTDB, 2012. LPI: Imagery, 2012. Created by: tmorton, fmackay, kpsroba



#### LEGEND

- |   |  |  |
|---|--|--|
| <span style="color: green;">●</span> Residential receiver | <span style="color: black;">—</span> The proposal    | <span style="color: blue;">—</span> 2025 Build 60dB(A) LAeq 9-hour |
|   | <span style="color: lightblue;">—</span> Watercourse | <span style="color: red;">—</span> 2025 Build 65dB(A) LAeq 15-hour |
|   | <span style="color: black;">—</span> Road            |  |

Paper Size A4  
0 75 150 300 450 600  
Metres  
Map Projection: Transverse Mercator  
Horizontal Datum: GDA 1994  
Grid: GDA 1994 MGA Zone 55



Australian Rail Track Corporation  
Inland Rail - Narrabri to North Star

Job Number 22-17916  
Revision 0  
Date 02 Jun 2017

Operational rail noise contours, LAeq  
2025 build vs 2025 no build

Figure E2- Sheet 6

G:\2217916\GIS\Maps\Deliverables\N2NS\Noise\2217916\_N004\_NNS\_2025\_Leq\_0.mxd Level 3, GHD Tower, 24 Honeysuckle Drive, Newcastle NSW 2300 T 61 2 4979 9999 F 61 2 4979 9988 E ntl@mail@ghd.com W www.ghd.com.au  
© 2017. Whilst every care has been taken to prepare this map, GHD and LPI make no representations or warranties about its accuracy, reliability, completeness or suitability for any particular purpose and cannot accept liability and responsibility of any kind (whether in contract, tort or otherwise) for any expenses, losses, damages and/or costs (including indirect or consequential damage) which are or may be incurred by any party as a result of the map being inaccurate, incomplete or unsuitable in any way and for any reason.  
Data source: LPI: DTDB, 2012. LPI: Imagery, 2012. Created by: tmorton, fmacKay, kpsroba



#### LEGEND

- |   |   |  |  |
|---|---|--|--|
| <span style="color: green;">●</span> Residential receiver | <span style="color: red;">●</span> Education            | <span style="color: black;">—</span> The proposal    | <span style="color: blue;">—</span> 2025 Build 60dB(A) LAeq 9-hour |
| <span style="color: green;">○</span> Active recreation    | <span style="color: brown;">●</span> Passive recreation | <span style="color: lightblue;">—</span> Watercourse | <span style="color: red;">—</span> 2025 Build 65dB(A) LAeq 15-hour |
|   |   | <span style="color: black;">—</span> Road            |  |

Paper Size A4  
0 75 150 300 450 600  
Metres  
Map Projection: Transverse Mercator  
Horizontal Datum: GDA 1994  
Grid: GDA 1994 MGA Zone 55



Australian Rail Track Corporation  
Inland Rail - Narrabri to North Star

Job Number 22-17916  
Revision 0  
Date 02 Jun 2017

Operational rail noise contours, LAeq  
2025 build vs 2025 no build

Figure E2- Sheet 7

G:\2217916\GIS\Maps\Deliverables\N2NS\Noise\2217916\_N004\_NNS\_2025\_Leq\_0.mxd

Level 3, GHD Tower, 24 Honeysuckle Drive, Newcastle NSW 2300 T 61 2 4979 9999 F 61 2 4979 9988 E nt@mail@ghd.com W www.ghd.com.au

© 2017. Whilst every care has been taken to prepare this map, GHD and LPI make no representations or warranties about its accuracy, reliability, completeness or suitability for any particular purpose and cannot accept liability and responsibility of any kind (whether in contract, tort or otherwise) for any expenses, losses, damages and/or costs (including indirect or consequential damage) which are or may be incurred by any party as a result of the map being inaccurate, incomplete or unsuitable in any way and for any reason.

Data source: LPI: DTDB, 2012. LPI: Imagery, 2012. Created by: tmorton, fmackay, kpsroba



#### LEGEND

- |   |              |                                 |
|---|--------------|---------------------------------|
| <span style="color: green;">●</span> Residential receiver | The proposal | 2025 Build 60dB(A) LAeq 9-hour  |
|   | Watercourse  | 2025 Build 65dB(A) LAeq 15-hour |
|   | Road         |                                 |

Paper Size A4  
0 75 150 300 450 600  
Metres  
Map Projection: Transverse Mercator  
Horizontal Datum: GDA 1994  
Grid: GDA 1994 MGA Zone 55



Australian Rail Track Corporation  
Inland Rail - Narrabri to North Star

Job Number 22-17916  
Revision 0  
Date 02 Jun 2017

Operational rail noise contours, LAeq  
2025 build vs 2025 no build

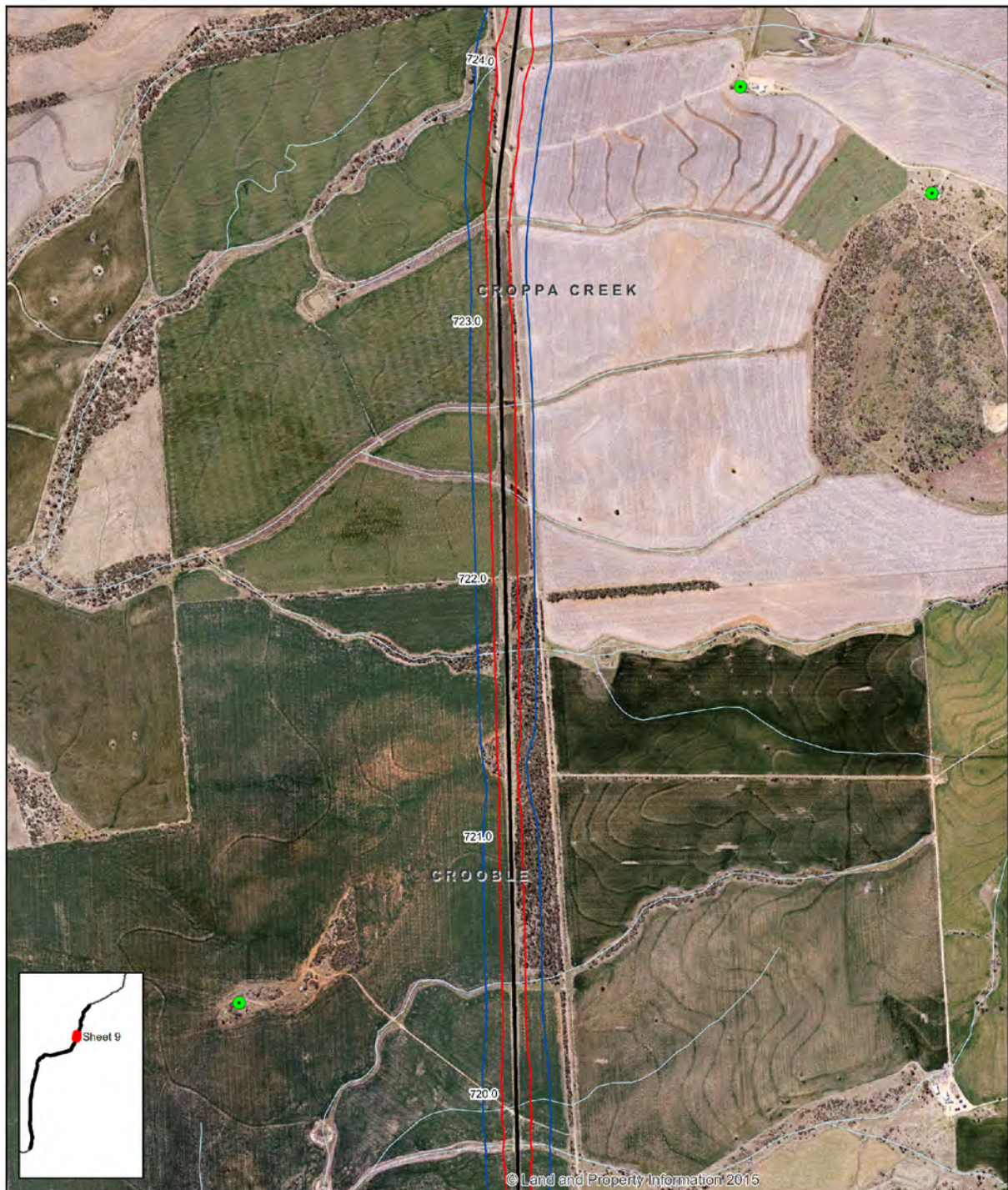
Figure E2- Sheet 8

G:\2217916\GIS\Maps\Deliverables\N2NS\Noise\2217916\_N004\_NNS\_2025\_Leq\_0.mxd

Level 3, GHD Tower, 24 Honeysuckle Drive, Newcastle NSW 2300 T 61 2 4979 9999 F 61 2 4979 9988 E [entl@mail@ghd.com](mailto:entl@mail@ghd.com) W [www.ghd.com.au](http://www.ghd.com.au)

© 2017. Whilst every care has been taken to prepare this map, GHD and LPI make no representations or warranties about its accuracy, reliability, completeness or suitability for any particular purpose and cannot accept liability and responsibility of any kind (whether in contract, tort or otherwise) for any expenses, losses, damages and/or costs (including indirect or consequential damage) which are or may be incurred by any party as a result of the map being inaccurate, incomplete or unsuitable in any way and for any reason.

Data source: LPI: DTDB, 2012. LPI: Imagery, 2012. Created by: tmorton, fmacKay, kpsroba



#### LEGEND

- Residential receiver
- The proposal
- 2025 Build 60dB(A) LAeq 9-hour
- Watercourse
- 2025 Build 65dB(A) LAeq 15-hour

Paper Size A4  
0 75 150 300 450 600  
Metres  
Map Projection: Transverse Mercator  
Horizontal Datum: GDA 1994  
Grid: GDA 1994 MGA Zone 55



Australian Rail Track Corporation  
Inland Rail - Narrabri to North Star

Job Number 22-17916  
Revision 0  
Date 02 Jun 2017

Operational rail noise contours, LAeq  
2025 build vs 2025 no build

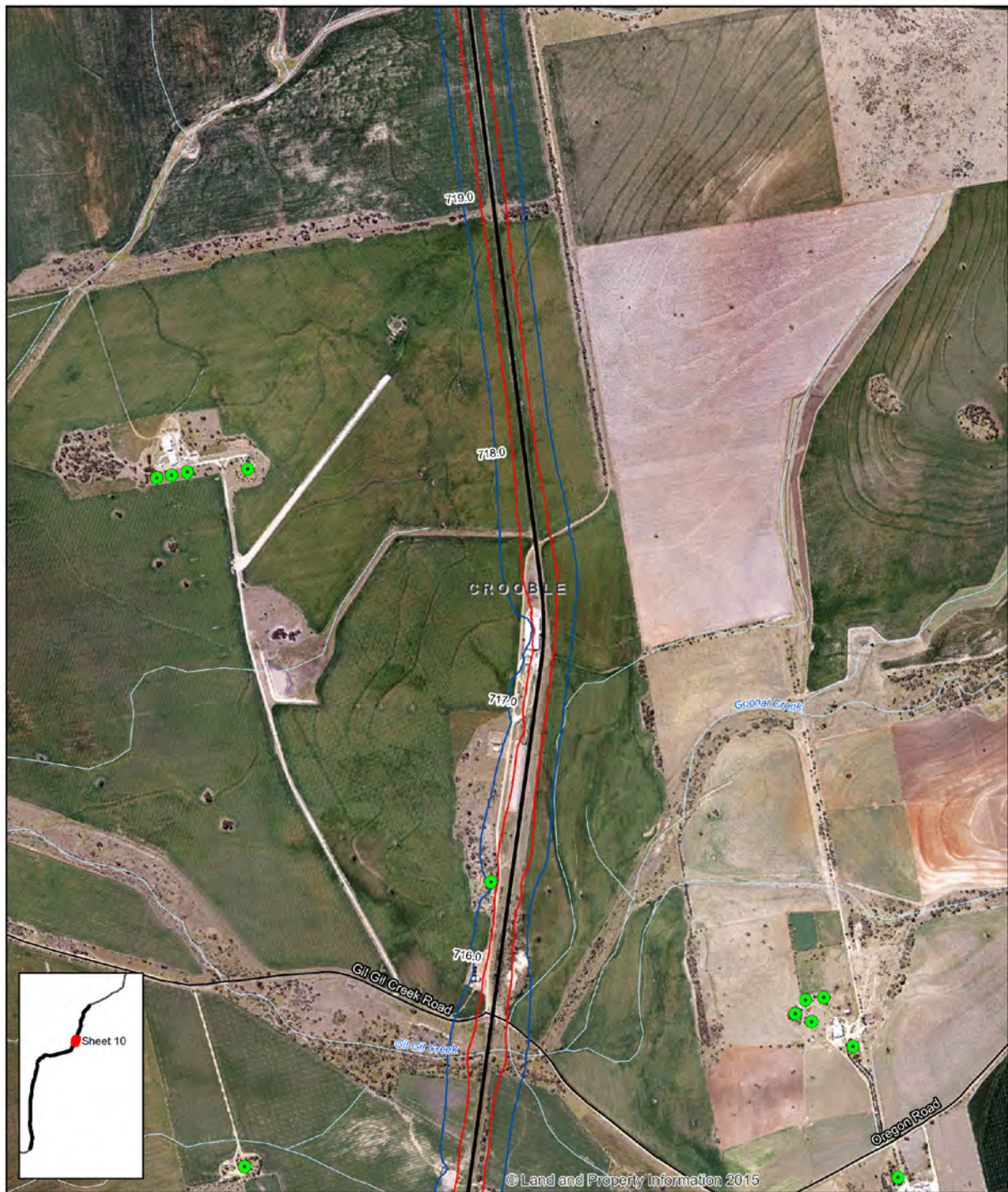
Figure E2- Sheet 9

G:\2217916\GIS\Maps\Deliverables\N2NS\Noise\2217916\_N004\_NNS\_2025\_Leq\_0.mxd

Level 3, GHD Tower, 24 Honeysuckle Drive, Newcastle NSW 2300 T 61 2 4979 9999 F 61 2 4979 9988 E nt@mail@ghd.com W www.ghd.com.au

© 2017. Whilst every care has been taken to prepare this map, GHD and LPI make no representations or warranties about its accuracy, reliability, completeness or suitability for any particular purpose and cannot accept liability and responsibility of any kind (whether in contract, tort or otherwise) for any expenses, losses, damages and/or costs (including indirect or consequential damage) which are or may be incurred by any party as a result of the map being inaccurate, incomplete or unsuitable in any way and for any reason.

Data source: LPI: DTDB, 2012. LPI: Imagery, 2012. Created by: tmorton, fmackay, kpsroba



#### LEGEND

- |   |  |  |
|---|--|--|
| <span style="color: green;">●</span> Residential receiver | <span style="color: black;">—</span> The proposal    | <span style="color: blue;">—</span> 2025 Build 60dB(A) LAeq 9-hour |
|   | <span style="color: lightblue;">—</span> Watercourse | <span style="color: red;">—</span> 2025 Build 65dB(A) LAeq 15-hour |
|   | <span style="color: black;">—</span> Road            |  |

Paper Size A4  
0 75 150 300 450 600  
Metres  
Map Projection: Transverse Mercator  
Horizontal Datum: GDA 1994  
Grid: GDA 1994 MGA Zone 55



Australian Rail Track Corporation  
Inland Rail - Narrabri to North Star

Job Number 22-17916  
Revision 0  
Date 02 Jun 2017

Operational rail noise contours, LAeq  
2025 build vs 2025 no build

Figure E2- Sheet 10

G:\2217916\GIS\Maps\Deliverables\N2NS\Noise\2217916\_N004\_NNS\_2025\_Leq\_0.mxd

Level 3, GHD Tower, 24 Honeysuckle Drive, Newcastle NSW 2300 T 61 2 4979 9999 F 61 2 4979 9988 E ntl@mail@ghd.com W www.ghd.com.au

© 2017. Whilst every care has been taken to prepare this map, GHD and LPI make no representations or warranties about its accuracy, reliability, completeness or suitability for any particular purpose and cannot accept liability and responsibility of any kind (whether in contract, tort or otherwise) for any expenses, losses, damages and/or costs (including indirect or consequential damage) which are or may be incurred by any party as a result of the map being inaccurate, incomplete or unsuitable in any way and for any reason.

Data source: LPI: DTDB, 2012. LPI: Imagery, 2012. Created by: tmorton, fmacKay, kpsroba



#### LEGEND

- Residential receiver
- The proposal
- 2025 Build 60dB(A) LAeq 9-hour
- Watercourse
- 2025 Build 65dB(A) LAeq 15-hour
- Road

Paper Size A4  
0 75 150 300 450 600  
Metres  
Map Projection: Transverse Mercator  
Horizontal Datum: GDA 1994  
Grid: GDA 1994 MGA Zone 55



Australian Rail Track Corporation  
Inland Rail - Narrabri to North Star

Job Number | 22-17916  
Revision | 0  
Date | 02 Jun 2017

Operational rail noise contours, LAeq  
2025 build vs 2025 no build

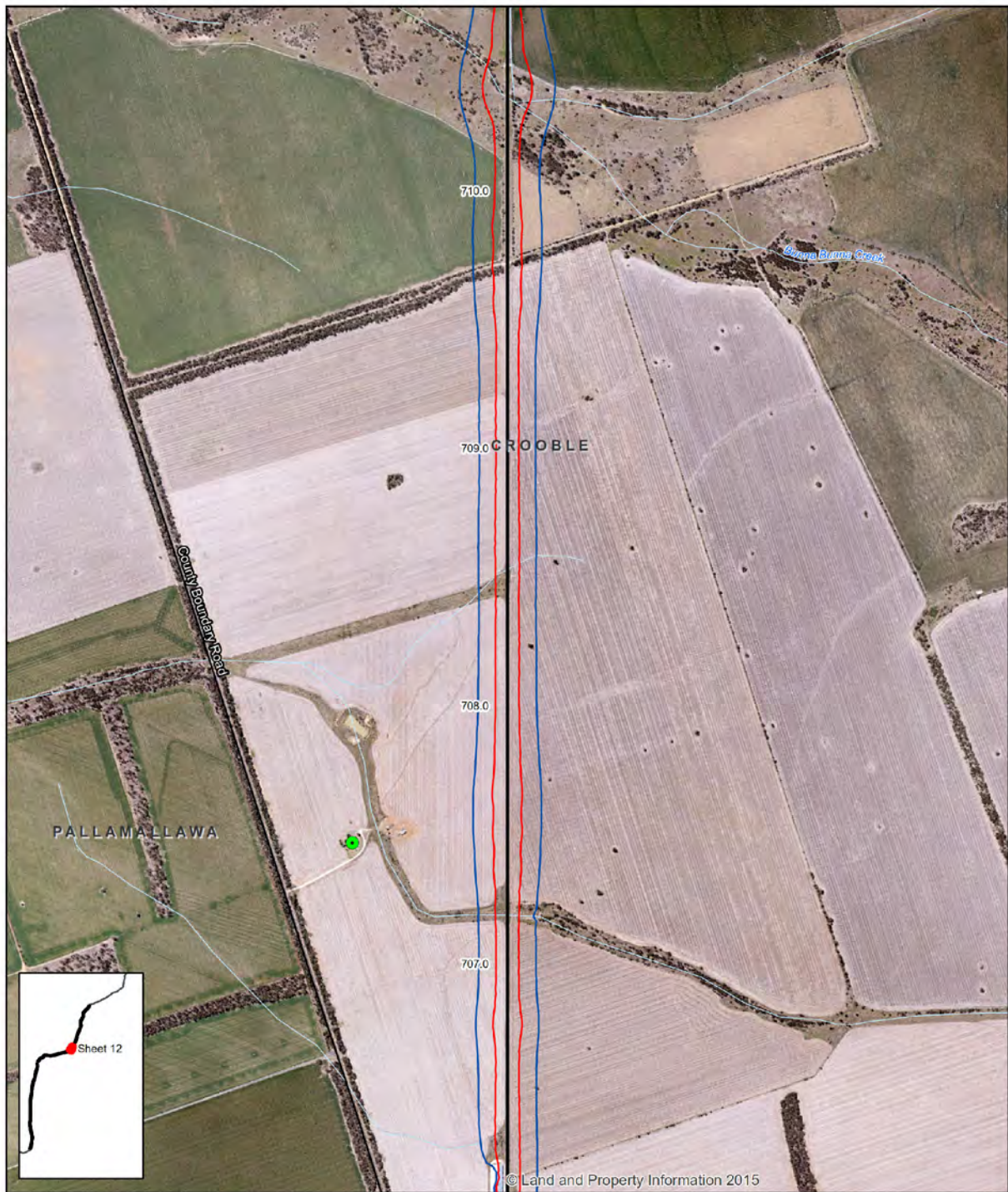
Figure E2- Sheet 11

G:\2217916\GIS\Maps\Deliverables\N2NS\Noise\2217916\_N004\_NNS\_2025\_Leq\_0.mxd

Level 3, GHD Tower, 24 Honeysuckle Drive, Newcastle NSW 2300 T 61 2 4979 9999 F 61 2 4979 9988 E ntl@mail@ghd.com W www.ghd.com.au

© 2017. Whilst every care has been taken to prepare this map, GHD and LPI make no representations or warranties about its accuracy, reliability, completeness or suitability for any particular purpose and cannot accept liability and responsibility of any kind (whether in contract, tort or otherwise) for any expenses, losses, damages and/or costs (including indirect or consequential damage) which are or may be incurred by any party as a result of the map being inaccurate, incomplete or unsuitable in any way and for any reason.

Data source: LPI: DTDB, 2012. LPI: Imagery, 2012. Created by: tmorton, fmacKay, kpsroba



#### LEGEND

- Residential receiver
- The proposal
- 2025 Build 60dB(A) LAeq 9-hour
- Watercourse
- 2025 Build 65dB(A) LAeq 15-hour
- Road

Paper Size A4  
0 75 150 300 450 600  
Metres  
Map Projection: Transverse Mercator  
Horizontal Datum: GDA 1994  
Grid: GDA 1994 MGA Zone 55



Australian Rail Track Corporation  
Inland Rail - Narrabri to North Star

Job Number | 22-17916  
Revision | 0  
Date | 02 Jun 2017

Operational rail noise contours, LAeq  
2025 build vs 2025 no build

Figure E2- Sheet 12

G:\2217916\GIS\Maps\Deliverables\N2NS\Noise\2217916\_N004\_NNS\_2025\_Leq\_0.mxd

Level 3, GHD Tower, 24 Honeysuckle Drive, Newcastle NSW 2300 T 61 2 4979 9999 F 61 2 4979 9988 E [ent@mail@ghd.com](mailto:ent@mail@ghd.com) W [www.ghd.com.au](http://www.ghd.com.au)

© 2017. Whilst every care has been taken to prepare this map, GHD and LPI make no representations or warranties about its accuracy, reliability, completeness or suitability for any particular purpose and cannot accept liability and responsibility of any kind (whether in contract, tort or otherwise) for any expenses, losses, damages and/or costs (including indirect or consequential damage) which are or may be incurred by any party as a result of the map being inaccurate, incomplete or unsuitable in any way and for any reason.

Data source: LPI: DTDB, 2012. LPI: Imagery, 2012. Created by: tmorton, fmackay, kpsroba



#### LEGEND

- |   |  |  |
|---|--|--|
| <span style="color: green;">●</span> Residential receiver | <span style="color: black;">—</span> The proposal    | <span style="color: blue;">—</span> 2025 Build 60dB(A) LAeq 9-hour |
|   | <span style="color: lightblue;">—</span> Watercourse | <span style="color: red;">—</span> 2025 Build 65dB(A) LAeq 15-hour |
|   | <span style="color: black;">—</span> Road            |  |

Paper Size A4  
0 75 150 300 450 600  
Metres  
Map Projection: Transverse Mercator  
Horizontal Datum: GDA 1994  
Grid: GDA 1994 MGA Zone 55



Australian Rail Track Corporation  
Inland Rail - Narrabri to North Star

Job Number 22-17916  
Revision 0  
Date 02 Jun 2017

Operational rail noise contours, LAeq  
2025 build vs 2025 no build

Figure E2- Sheet 13

G:\2217916\GIS\Maps\Deliverables\N2NS\Noise\2217916\_N004\_NNS\_2025\_Leq\_0.mxd

Level 3, GHD Tower, 24 Honeysuckle Drive, Newcastle NSW 2300 T 61 2 4979 9999 F 61 2 4979 9988 E ntlmalk@ghd.com W www.ghd.com.au

© 2017. Whilst every care has been taken to prepare this map, GHD and LPI make no representations or warranties about its accuracy, reliability, completeness or suitability for any particular purpose and cannot accept liability and responsibility of any kind (whether in contract, tort or otherwise) for any expenses, losses, damages and/or costs (including indirect or consequential damage) which are or may be incurred by any party as a result of the map being inaccurate, incomplete or unsuitable in any way and for any reason.

Data source: LPI: DTDB, 2012. LPI: Imagery, 2012. Created by: tmorton, fmackay, kpsroba



#### LEGEND

- Residential receiver
- The proposal
- 2025 Build 60dB(A) LAeq 9-hour
- Watercourse
- 2025 Build 65dB(A) LAeq 15-hour

Paper Size A4  
0 75 150 300 450 600  
Metres  
Map Projection: Transverse Mercator  
Horizontal Datum: GDA 1994  
Grid: GDA 1994 MGA Zone 55



Australian Rail Track Corporation  
Inland Rail - Narrabri to North Star

Job Number 22-17916  
Revision 0  
Date 02 Jun 2017

Operational rail noise contours, LAeq  
2025 build vs 2025 no build

Figure E2- Sheet 14

G:\2217916\GIS\Maps\Deliverables\N2NS\Noise\2217916\_N004\_NNS\_2025\_Leq\_0.mxd

Level 3, GHD Tower, 24 Honeysuckle Drive, Newcastle NSW 2300 T 61 2 4979 9999 F 61 2 4979 9988 E ntl@mail@ghd.com W www.ghd.com.au

© 2017. Whilst every care has been taken to prepare this map, GHD and LPI make no representations or warranties about its accuracy, reliability, completeness or suitability for any particular purpose and cannot accept liability and responsibility of any kind (whether in contract, tort or otherwise) for any expenses, losses, damages and/or costs (including indirect or consequential damage) which are or may be incurred by any party as a result of the map being inaccurate, incomplete or unsuitable in any way and for any reason.

Data source: LPI: DTDB, 2012. LPI: Imagery, 2012. Created by: tmorton, fmacKay, kpsroba



#### LEGEND

- The proposal
- 2025 Build 60dB(A) LAeq 9-hour
- Watercourse
- 2025 Build 65dB(A) LAeq 15-hour

Paper Size A4  
 0 75 150 300 450 600  
 Metres  
 Map Projection: Transverse Mercator  
 Horizontal Datum: GDA 1994  
 Grid: GDA 1994 MGA Zone 55



Australian Rail Track Corporation  
 Inland Rail - Narrabri to North Star

Job Number 22-17916  
 Revision 0  
 Date 02 Jun 2017

Operational rail noise contours, LAeq  
 2025 build vs 2025 no build

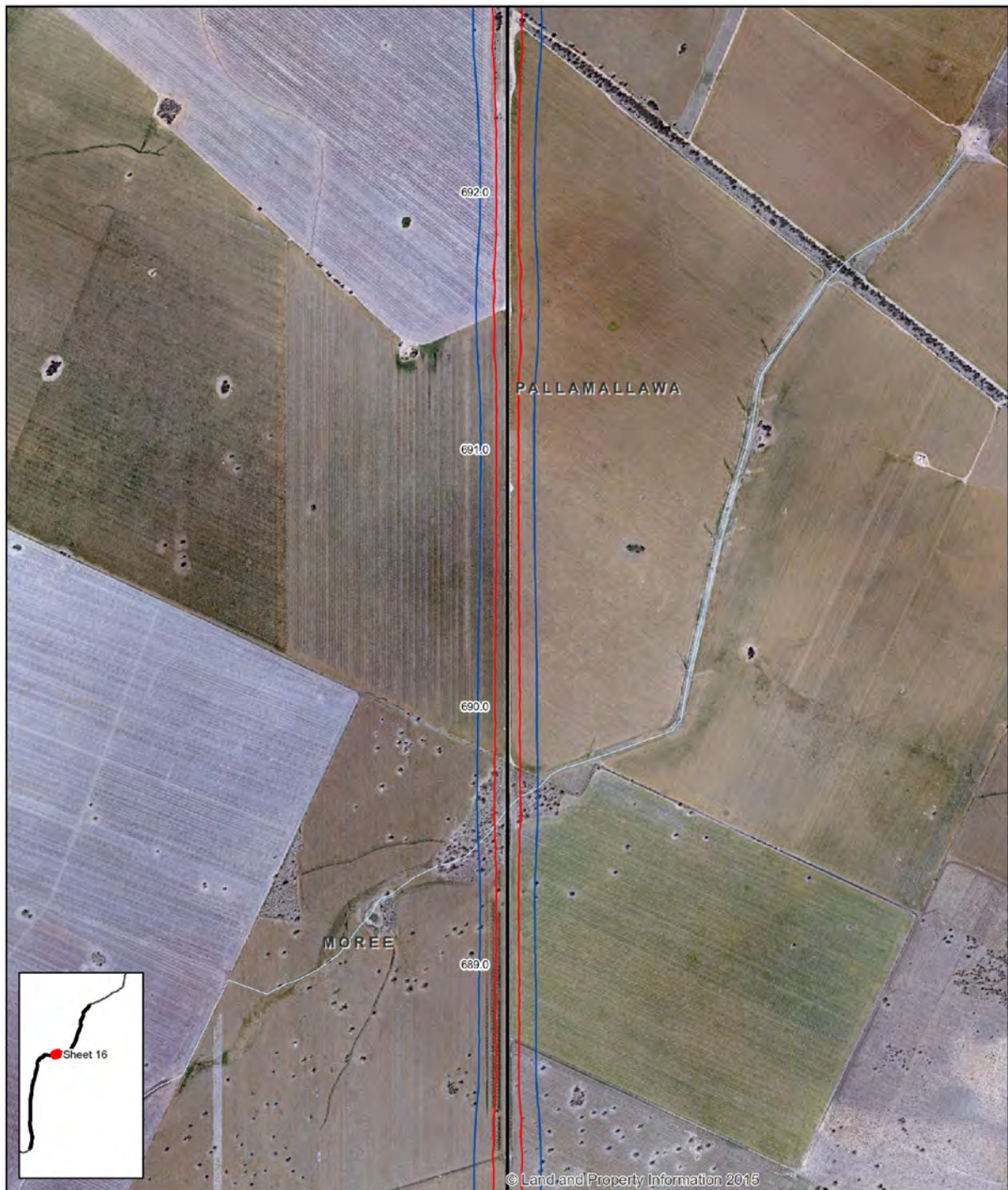
Figure E2- Sheet 15

G:\2217916\GIS\Maps\Deliverables\N2NS\Noise\2217916\_N004\_NNS\_2025\_Leq\_0.mxd

Level 3, GHD Tower, 24 Honeysuckle Drive, Newcastle NSW 2300 T 61 2 4979 9999 F 61 2 4979 9988 E [ent@mail@ghd.com](mailto:ent@mail@ghd.com) W [www.ghd.com.au](http://www.ghd.com.au)

© 2017. Whilst every care has been taken to prepare this map, GHD and LPI make no representations or warranties about its accuracy, reliability, completeness or suitability for any particular purpose and cannot accept liability and responsibility of any kind (whether in contract, tort or otherwise) for any expenses, losses, damages and/or costs (including indirect or consequential damage) which are or may be incurred by any party as a result of the map being inaccurate, incomplete or unsuitable in any way and for any reason.

Data source: LPI: DTDB, 2012. LPI: Imagery, 2012. Created by: tmorton, fmackay, kpsroba



#### LEGEND

- The proposal
- 2025 Build 60dB(A) LAeq 9-hour
- Watercourse
- 2025 Build 65dB(A) LAeq 15-hour

Paper Size A4  
 0 75 150 300 450 600  
 Metres  
 Map Projection: Transverse Mercator  
 Horizontal Datum: GDA 1994  
 Grid: GDA 1994 MGA Zone 55



Australian Rail Track Corporation  
 Inland Rail - Narrabri to North Star

Job Number | 22-17916  
 Revision | 0  
 Date | 02 Jun 2017

Operational rail noise contours, LAeq  
 2025 build vs 2025 no build

Figure E2- Sheet 16

G:\2217916\GIS\Maps\Deliverables\N2NS\Noise\2217916\_N004\_NNS\_2025\_Leq\_0.mxd

Level 3, GHD Tower, 24 Honeysuckle Drive, Newcastle NSW 2300 T 61 2 4979 9999 F 61 2 4979 9988 E [entmail@ghd.com](mailto:entmail@ghd.com) W [www.ghd.com.au](http://www.ghd.com.au)

© 2017. Whilst every care has been taken to prepare this map, GHD and LPI make no representations or warranties about its accuracy, reliability, completeness or suitability for any particular purpose and cannot accept liability and responsibility of any kind (whether in contract, tort or otherwise) for any expenses, losses, damages and/or costs (including indirect or consequential damage) which are or may be incurred by any party as a result of the map being inaccurate, incomplete or unsuitable in any way and for any reason.

Data source: LPI: DTDB, 2012. LPI: Imagery, 2012. Created by: Imorton, fmacKay, kpsroba



#### LEGEND

- The proposal
- 2025 Build 60dB(A) LAeq 9-hour
- Watercourse
- 2025 Build 65dB(A) LAeq 15-hour
- Road

Paper Size A4  
0 75 150 300 450 600  
Metres  
Map Projection: Transverse Mercator  
Horizontal Datum: GDA 1994  
Grid: GDA 1994 MGA Zone 55



Australian Rail Track Corporation  
Inland Rail - Narrabri to North Star

Job Number | 22-17916  
Revision | 0  
Date | 02 Jun 2017

Operational rail noise contours, LAeq  
2025 build vs 2025 no build

Figure E2- Sheet 17

G:\2217916\GIS\Maps\Deliverables\N2NS\Noise\2217916\_N004\_NNS\_2025\_Leq\_0.mxd

Level 3, GHD Tower, 24 Honeysuckle Drive, Newcastle NSW 2300 T 61 2 4979 9999 F 61 2 4979 9988 E [ent@mail@ghd.com](mailto:ent@mail@ghd.com) W [www.ghd.com.au](http://www.ghd.com.au)

© 2017. Whilst every care has been taken to prepare this map, GHD and LPI make no representations or warranties about its accuracy, reliability, completeness or suitability for any particular purpose and cannot accept liability and responsibility of any kind (whether in contract, tort or otherwise) for any expenses, losses, damages and/or costs (including indirect or consequential damage) which are or may be incurred by any party as a result of the map being inaccurate, incomplete or unsuitable in any way and for any reason.

Data source: LPI: DTDB, 2012. LPI: Imagery, 2012. Created by: tmorton, fmacKay, kpsroba



#### LEGEND

- |                      |              |                                 |
|----------------------|--------------|---------------------------------|
| Residential receiver | The proposal | 2025 Build 60dB(A) LAeq 9-hour  |
|                      | Watercourse  | 2025 Build 65dB(A) LAeq 15-hour |
|                      | Road         |                                 |

Paper Size A4  
0 75 150 300 450 600  
Metres  
Map Projection: Transverse Mercator  
Horizontal Datum: GDA 1994  
Grid: GDA 1994 MGA Zone 55



Australian Rail Track Corporation  
Inland Rail - Narrabri to North Star

Job Number 22-17916  
Revision 0  
Date 02 Jun 2017

Operational rail noise contours, LAeq  
2025 build vs 2025 no build

Figure E2- Sheet 18

G:\2217916\GIS\Maps\Deliverables\N2NS\Noise\2217916\_N004\_NNS\_2025\_Leq\_0.mxd

Level 3, GHD Tower, 24 Honeysuckle Drive, Newcastle NSW 2300 T 61 2 4979 9999 F 61 2 4979 9988 E ntl@mail@ghd.com W www.ghd.com.au

© 2017. Whilst every care has been taken to prepare this map, GHD and LPI make no representations or warranties about its accuracy, reliability, completeness or suitability for any particular purpose and cannot accept liability and responsibility of any kind (whether in contract, tort or otherwise) for any expenses, losses, damages and/or costs (including indirect or consequential damage) which are or may be incurred by any party as a result of the map being inaccurate, incomplete or unsuitable in any way and for any reason.

Data source: LPI: DTDB, 2012. LPI: Imagery, 2012. Created by: tmorton, fmackay, kpsroba



#### LEGEND

- |   |  |  |
|---|--|--|
| <span style="color: green;">●</span> Residential receiver | <span style="color: black;">—</span> The proposal    | <span style="color: blue;">—</span> 2025 Build 60dB(A) LAeq 9-hour |
| <span style="color: green;">○</span> Active recreation    | <span style="color: lightblue;">—</span> Watercourse | <span style="color: red;">—</span> 2025 Build 65dB(A) LAeq 15-hour |
|   | <span style="color: yellow;">—</span> Highway        |  |
|   | <span style="color: black;">—</span> Road            |  |

Paper Size A4  
0 75 150 300 450 600  
Metres  
Map Projection: Transverse Mercator  
Horizontal Datum: GDA 1994  
Grid: GDA 1994 MGA Zone 55



Australian Rail Track Corporation  
Inland Rail - Narrabri to North Star

Job Number 22-17916  
Revision 0  
Date 02 Jun 2017

Operational rail noise contours, LAeq  
2025 build vs 2025 no build

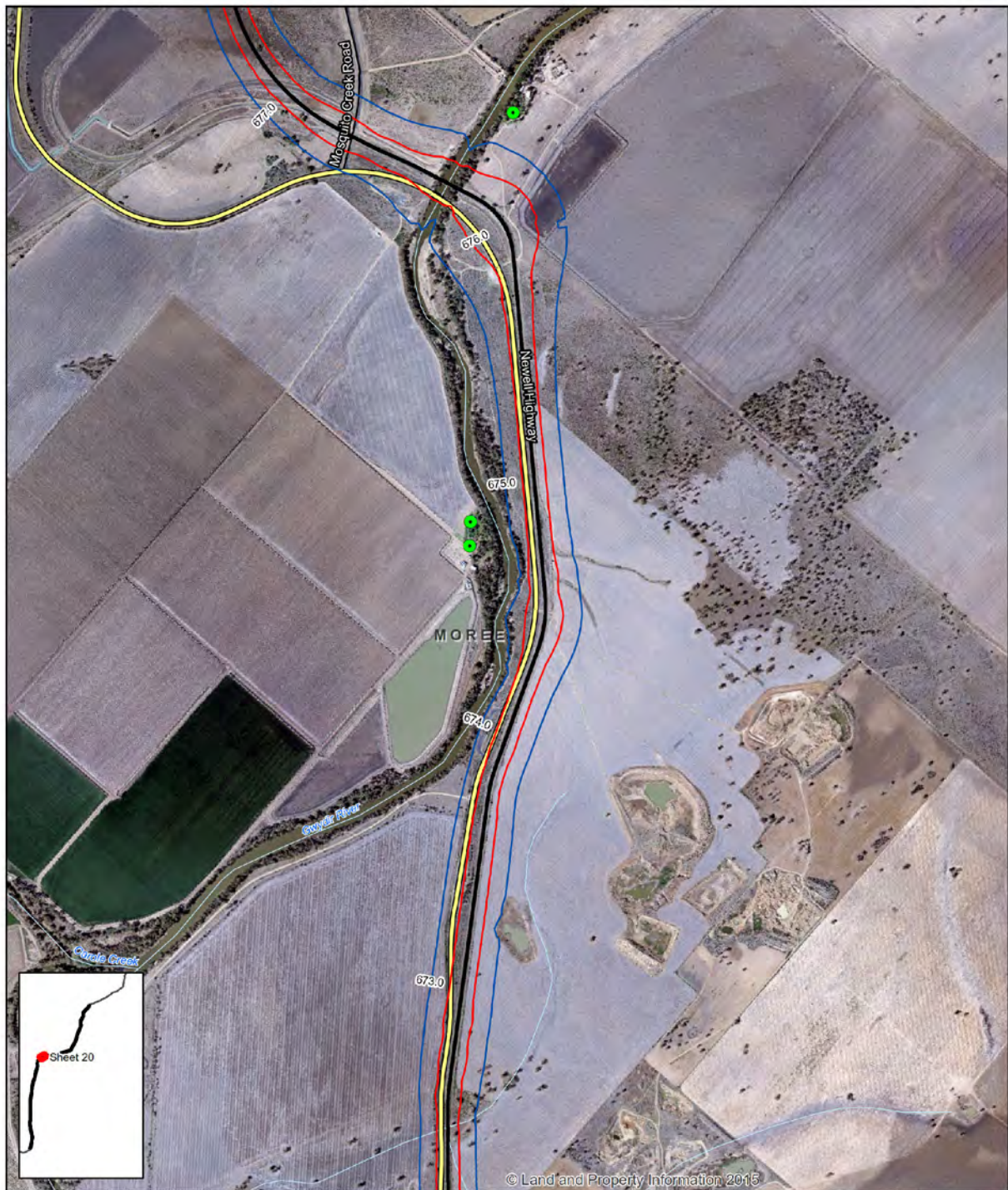
Figure E2- Sheet 19

G:\2217916\GIS\Maps\Deliverables\N2NS\Noise\2217916\_N004\_NNS\_2025\_Leq\_0.mxd

Level 3, GHD Tower, 24 Honeysuckle Drive, Newcastle NSW 2300 T 61 2 4979 9999 F 61 2 4979 9988 E ntl@mail@ghd.com W www.ghd.com.au

© 2017. Whilst every care has been taken to prepare this map, GHD and LPI make no representations or warranties about its accuracy, reliability, completeness or suitability for any particular purpose and cannot accept liability and responsibility of any kind (whether in contract, tort or otherwise) for any expenses, losses, damages and/or costs (including indirect or consequential damage) which are or may be incurred by any party as a result of the map being inaccurate, incomplete or unsuitable in any way and for any reason.

Data source: LPI: DTDB, 2012. LPI: Imagery, 2012. Created by: tmorton, fmacKay, kpsroba



#### LEGEND

- |   |  |  |
|---|--|--|
| <span style="color: green;">●</span> Residential receiver | <span style="color: black;">—</span> The proposal    | <span style="color: blue;">—</span> 2025 Build 60dB(A) LAeq 9-hour |
|   | <span style="color: lightblue;">—</span> Watercourse | <span style="color: red;">—</span> 2025 Build 65dB(A) LAeq 15-hour |
|   | <span style="color: yellow;">—</span> Highway        |  |
|   | <span style="color: black;">—</span> Road            |  |

Paper Size A4  
0 75 150 300 450 600  
Metres  
Map Projection: Transverse Mercator  
Horizontal Datum: GDA 1994  
Grid: GDA 1994 MGA Zone 55



Australian Rail Track Corporation  
Inland Rail - Narrabri to North Star

Job Number 22-17916  
Revision 0  
Date 02 Jun 2017

Operational rail noise contours, LAeq  
2025 build vs 2025 no build

Figure E2- Sheet 20

G:\2217916\GIS\Maps\Deliverables\N2NS\Noise\2217916\_N004\_NNS\_2025\_Leq\_0.mxd

Level 3, GHD Tower, 24 Honeysuckle Drive, Newcastle NSW 2300 T 61 2 4979 9999 F 61 2 4979 9988 E ntl@mail@ghd.com W www.ghd.com.au

© 2017. Whilst every care has been taken to prepare this map, GHD and LPI make no representations or warranties about its accuracy, reliability, completeness or suitability for any particular purpose and cannot accept liability and responsibility of any kind (whether in contract, tort or otherwise) for any expenses, losses, damages and/or costs (including indirect or consequential damage) which are or may be incurred by any party as a result of the map being inaccurate, incomplete or unsuitable in any way and for any reason.

Data source: LPI: DTDB, 2012. LPI: Imagery, 2012. Created by: tmorton, fmacKay, kpsroba