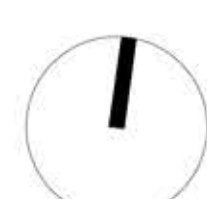
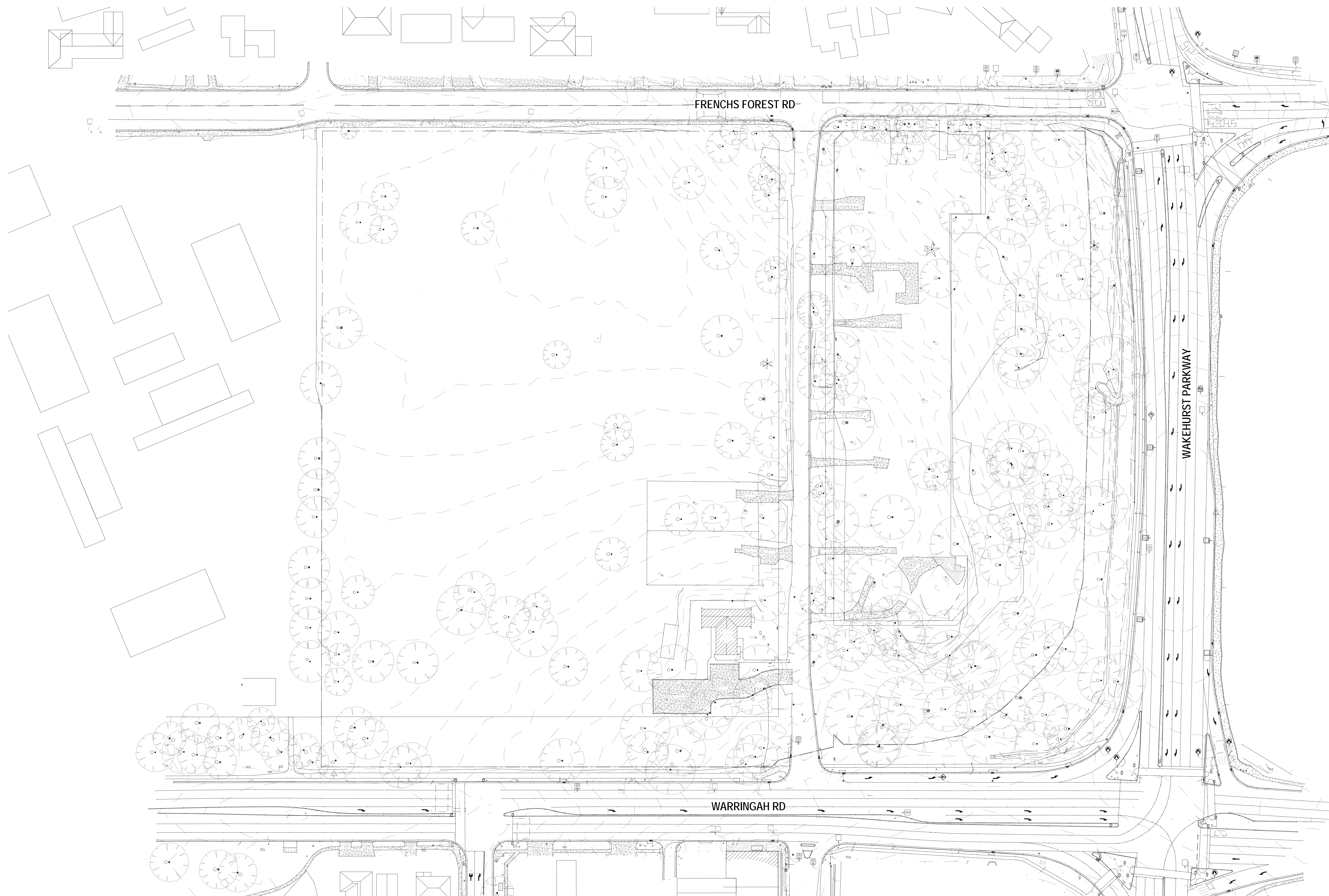


Sheet Number	Sheet Name
APB.PCT.ARC. ALL.000	COVER SHEET
APB.PCT.ARC. ALL.001	URBAN CONTEXT DRAWING
APB.PCT.ARC. ALL.002	SITE PLAN - EXISTING
APB.PCT.ARC. ALL.003	SITE ANALYSIS PLAN
APB.PCT.ARC. ALL.004	SITE PLAN PROPOSED
APB.PCT.ARC. ALL.005	PEDESTRIAN AND CYCLE ACCESS PLAN
APB.PCT.ARC. ALL.006	PRECINCT PLAN
APB.PCT.ARC. EXT.001	SHADOW DIAGRAMS
APB.PCT.ARC. EXT.002	PRECINCT RENDER 1
APB.PCT.ARC. EXT.003	PRECINCT RENDER 2
APB.PCT.ARC. EXT.004	PRECINCT RENDER 3
APB.PCT.ARC. EXT.010	PRECINCT MATERIALS BOARD
APB.PCT.ARC. EXT.012	PRECINCT MATERIALS BOARD
APB.PCT.ARC. SEC.001	PRECINCT SITE SECTIONS

Sheet Number	Sheet Name
APB.HSP.ARC. ELE.001	HOSPITAL - EAST AND SOUTH ELEVATIONS
APB.HSP.ARC. ELE.002	HOSPITAL - WEST AND NORTH ELEVATIONS
APB.HSP.ARC. SEC.001	HOSPITAL SECTIONS
APB.HSP.ARC. B01.001	HOSPITAL-GENERAL ARRANGEMENT PLANS - LEVEL BASEMENT
APB.HSP.ARC. L00.001	HOSPITAL-GENERAL ARRANGEMENT PLANS - LEVEL GROUND
APB.HSP.ARC. L01.001	HOSPITAL-GENERAL ARRANGEMENT PLANS - LEVEL 01
APB.HSP.ARC. L02.001	HOSPITAL-GENERAL ARRANGEMENT PLANS - LEVEL 02
APB.HSP.ARC. L03.001	HOSPITAL-GENERAL ARRANGEMENT PLANS - LEVEL 03
APB.HSP.ARC. L04.001	HOSPITAL-GENERAL ARRANGEMENT PLANS - LEVEL 04
APB.HSP.ARC. L05.001	HOSPITAL-GENERAL ARRANGEMENT PLANS - LEVEL 05
APB.HSP.ARC. L06.001	HOSPITAL-GENERAL ARRANGEMENT PLANS - LEVEL 06
APB.HSP.ARC. L07.001	HOSPITAL-GENERAL ARRANGEMENT PLANS - LEVEL 07
APB.HSP.ARC. L08.001	HOSPITAL-GENERAL ARRANGEMENT PLANS - LEVEL 08
APB.HSP.ARC. L09.001	HOSPITAL-GENERAL ARRANGEMENT PLANS - ROOF

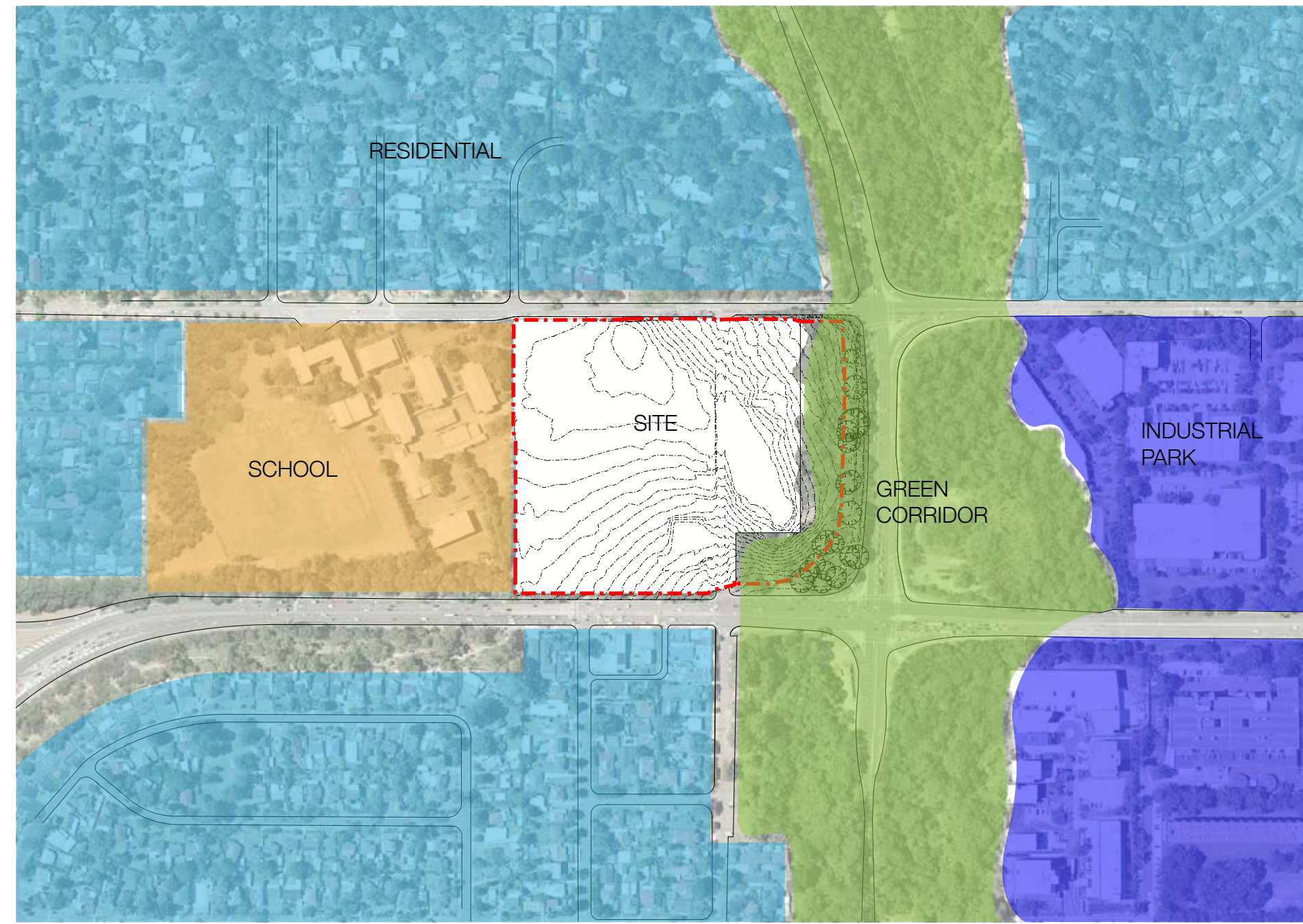
Sheet Number	Sheet Name
APB.CAP.ARC. ALL.001	CAR PARK OVERALL FLOOR PLANS - LEVEL B2, B1, Ground
APB.CAP.ARC. ALL.002	CAR PARK OVERALL FLOOR PLANS - LEVEL 01, 02, 03
APB.CAP.ARC. ALL.003	CAR PARK OVERALL FLOOR PLANS - LEVEL 04, 05, 06
APB.CAP.ARC. ALL.004	CAR PARK OVERALL FLOOR PLANS - LEVEL 07
APB.CAP.ARC. ELE.001	CAR PARK EAST, WEST ELEVATIONS
APB.CAP.ARC. ELE.002	CAR PARK NORTH, SOUTH ELEVATIONS
APB.CAP.ARC. SEC.001	CAR PARK SECTIONS



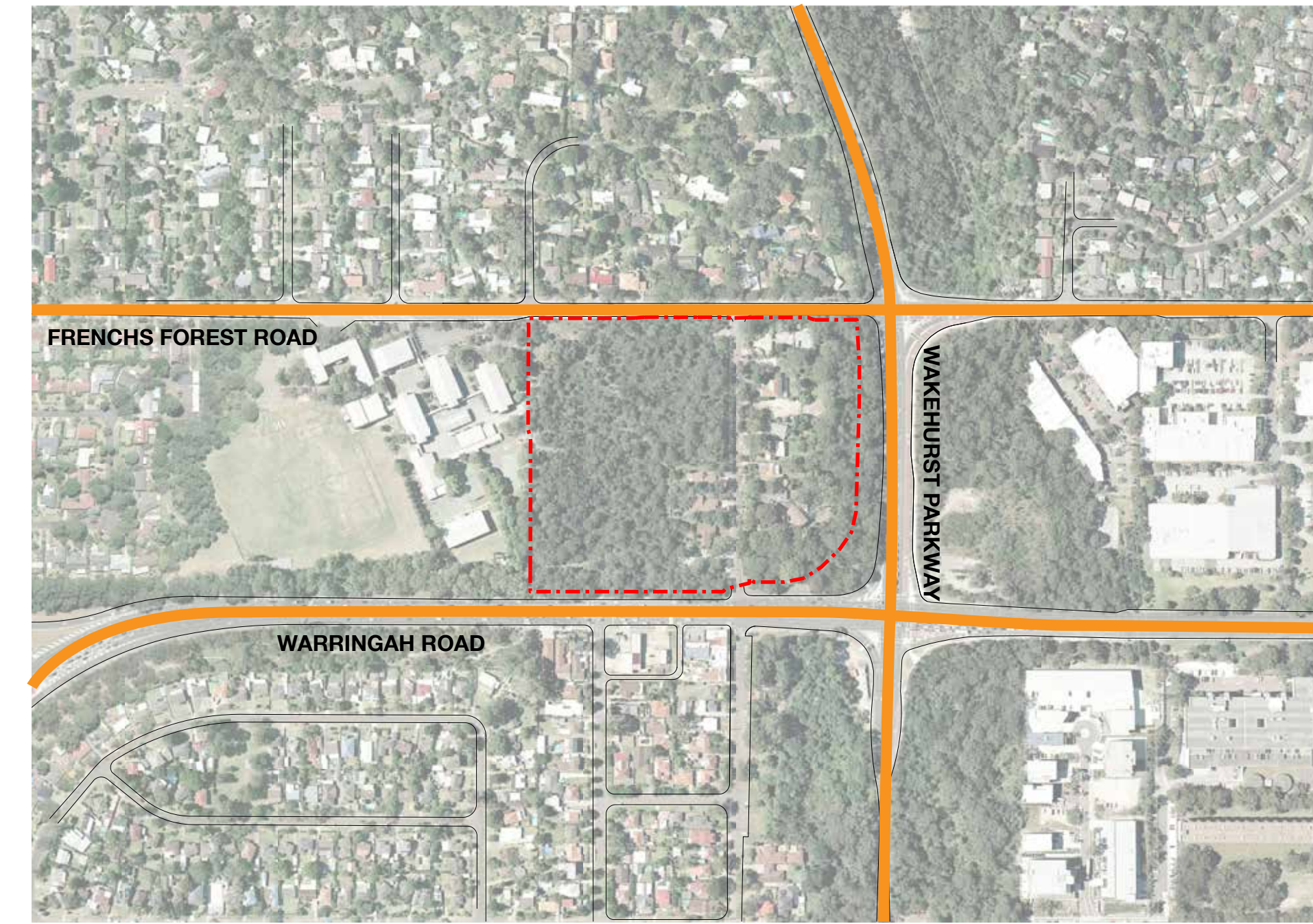




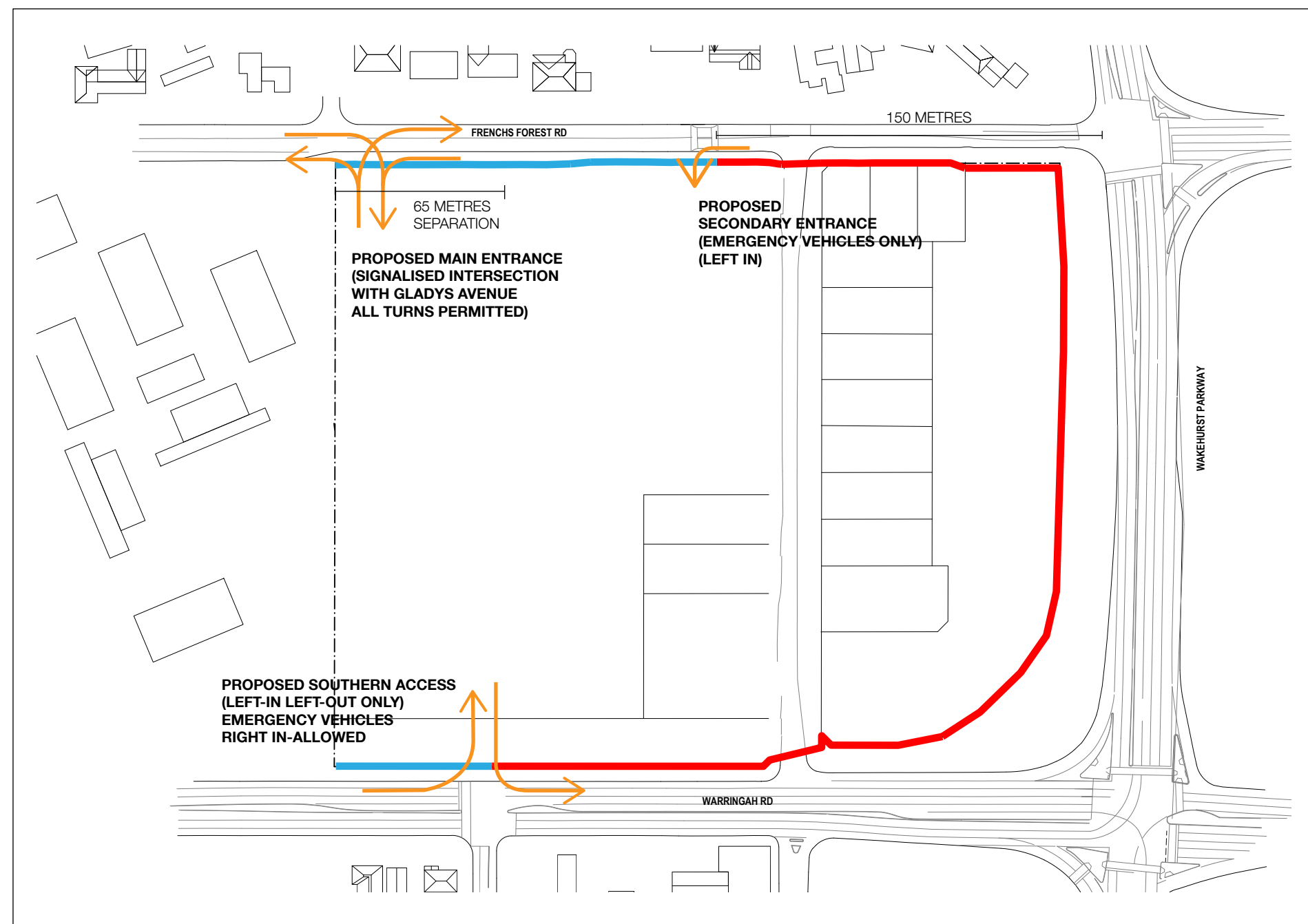
EXISTING SITE BOUNDARY



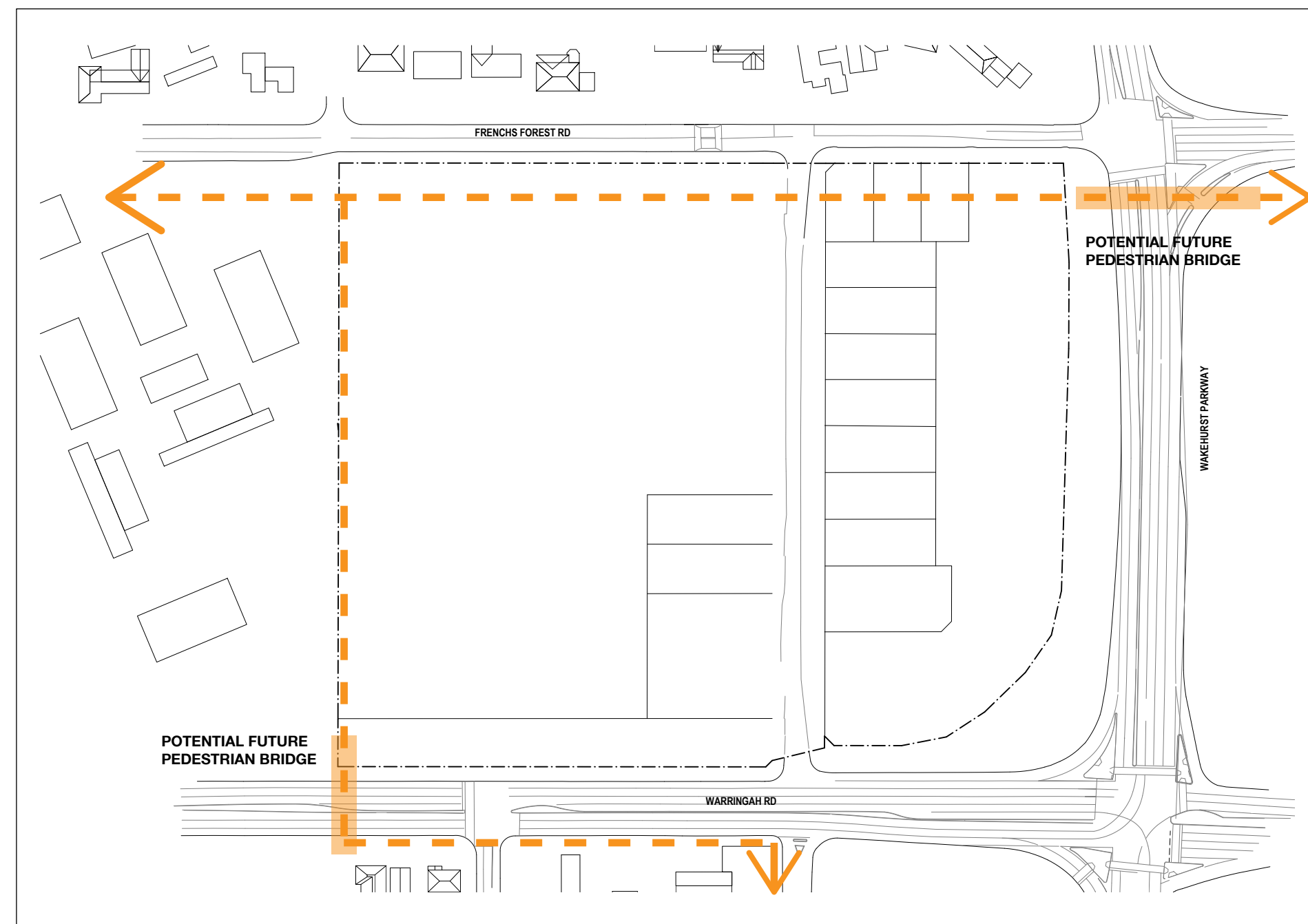
NEIGHBOURS



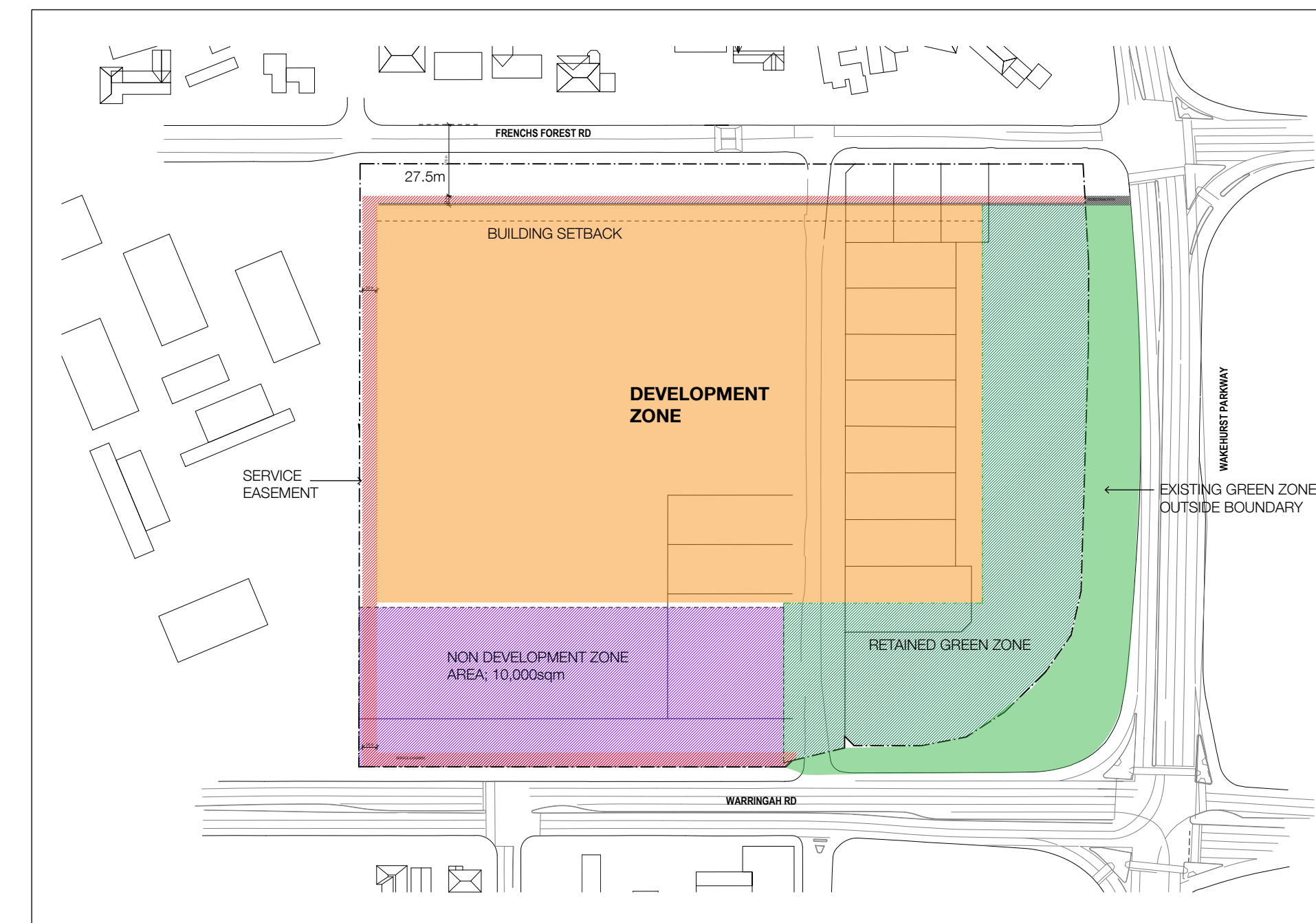
ROAD NETWORK



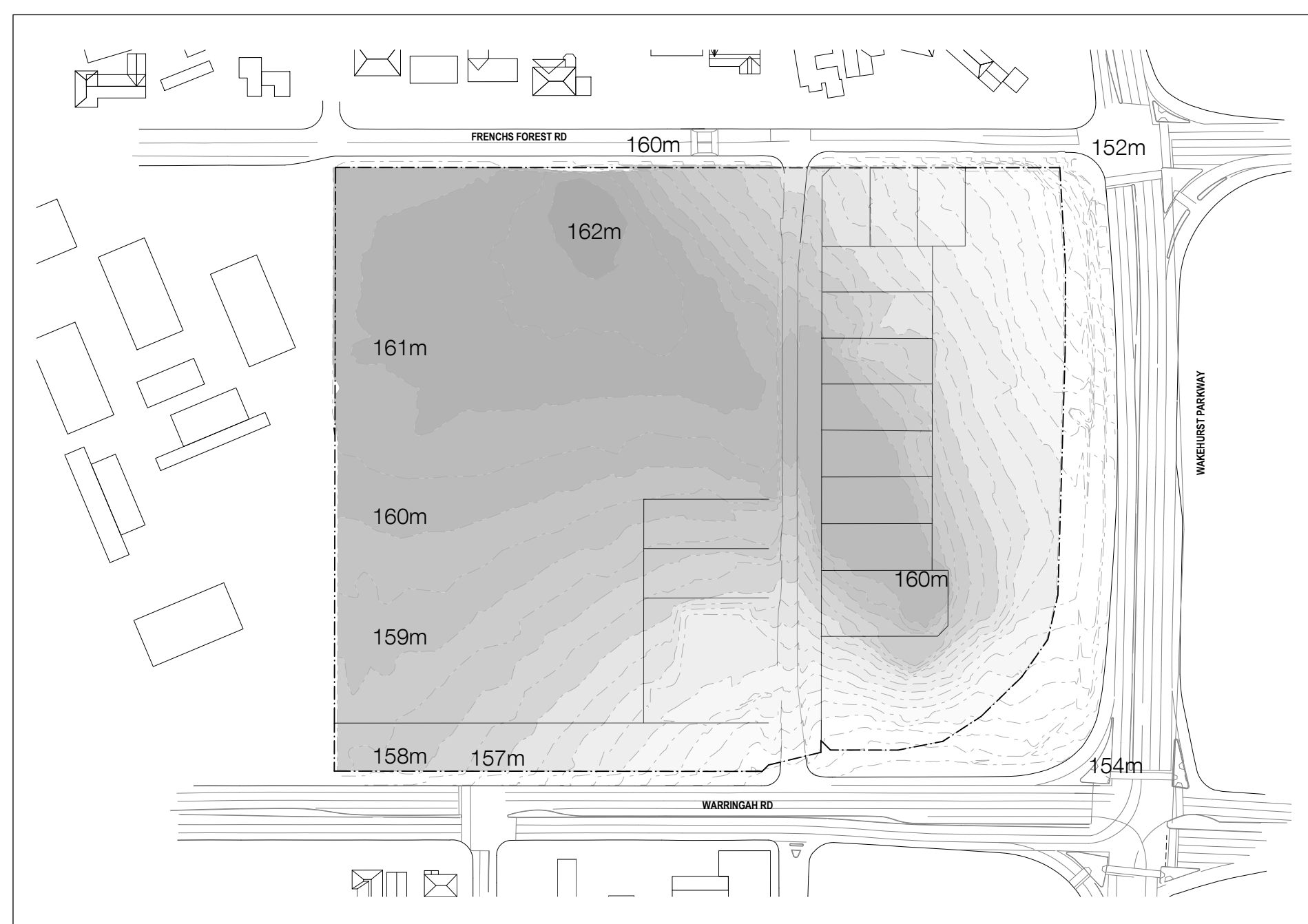
SITE ACCESS



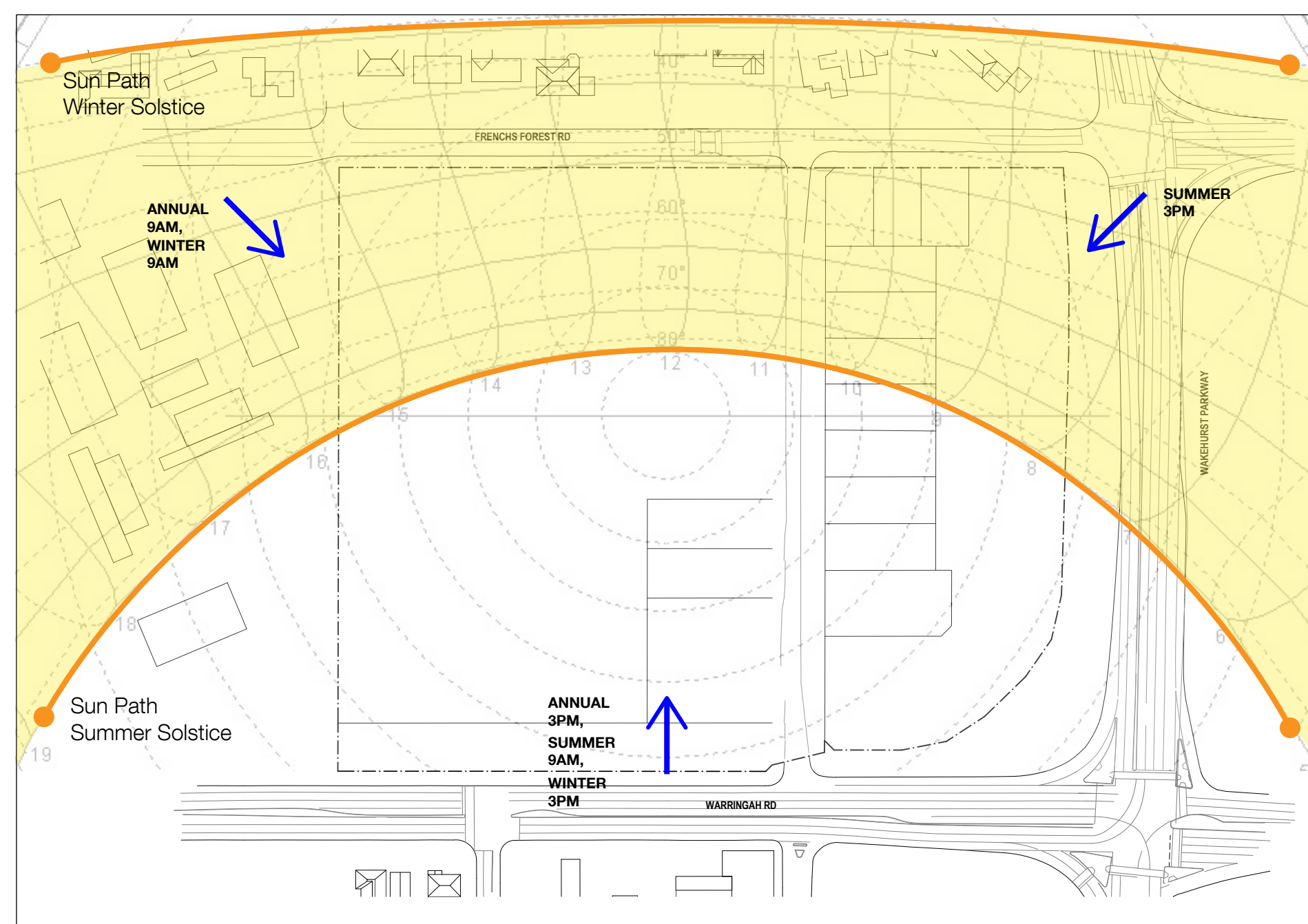
PEDESTRIAN ACCESS



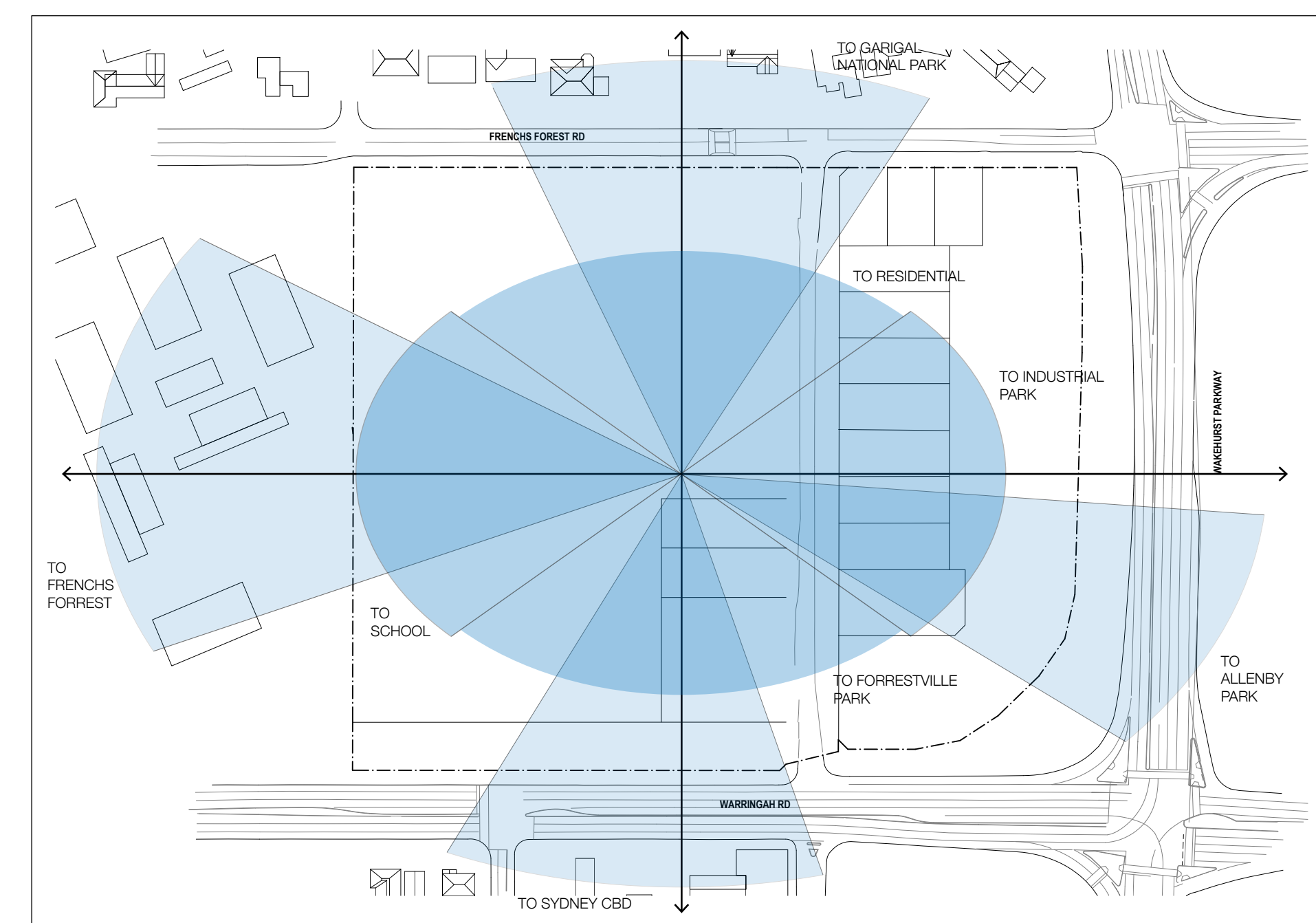
CONSTRAINTS



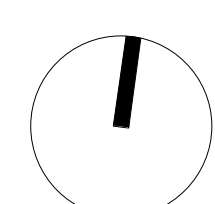
TOPOGRAPHY

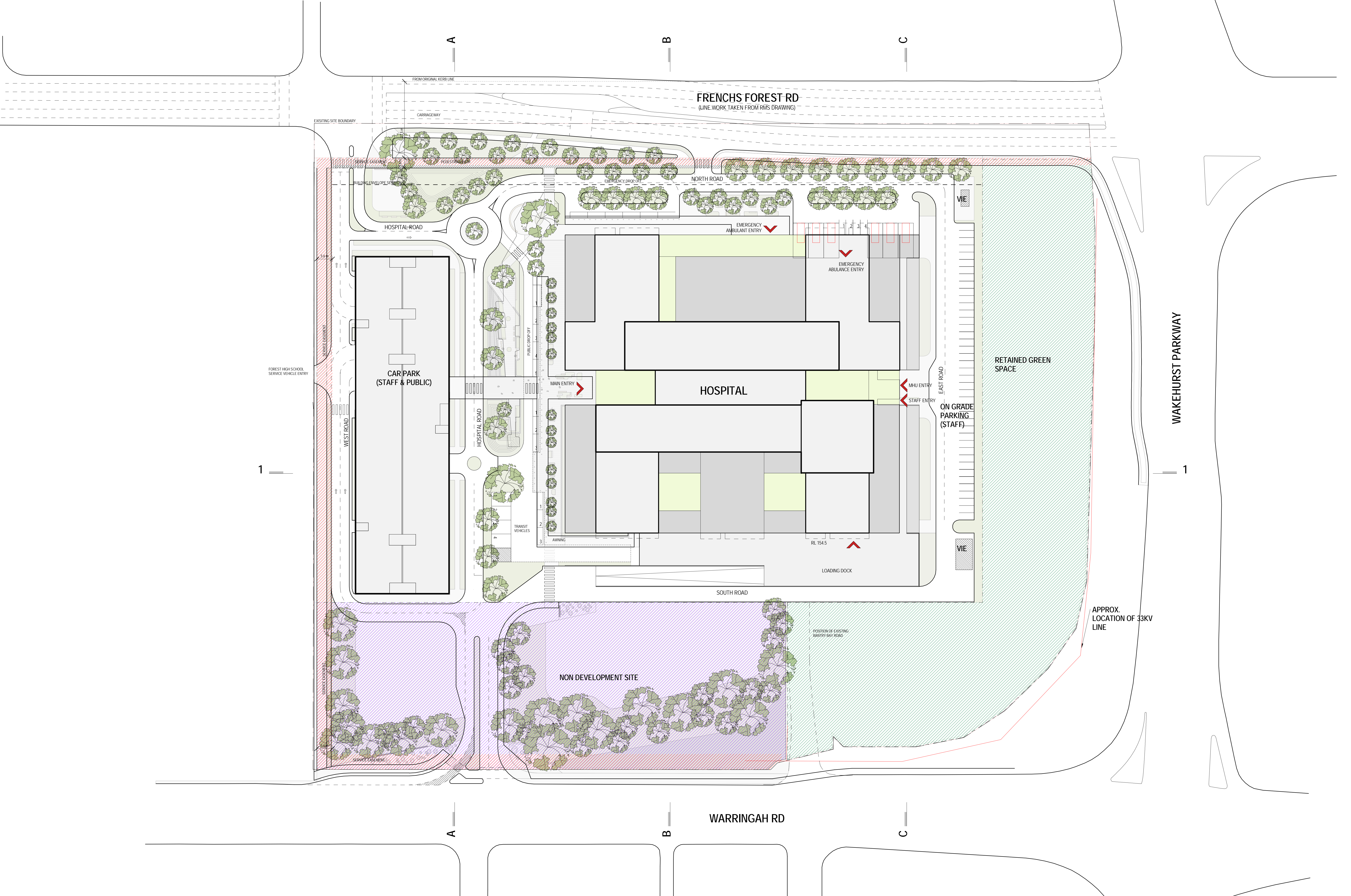


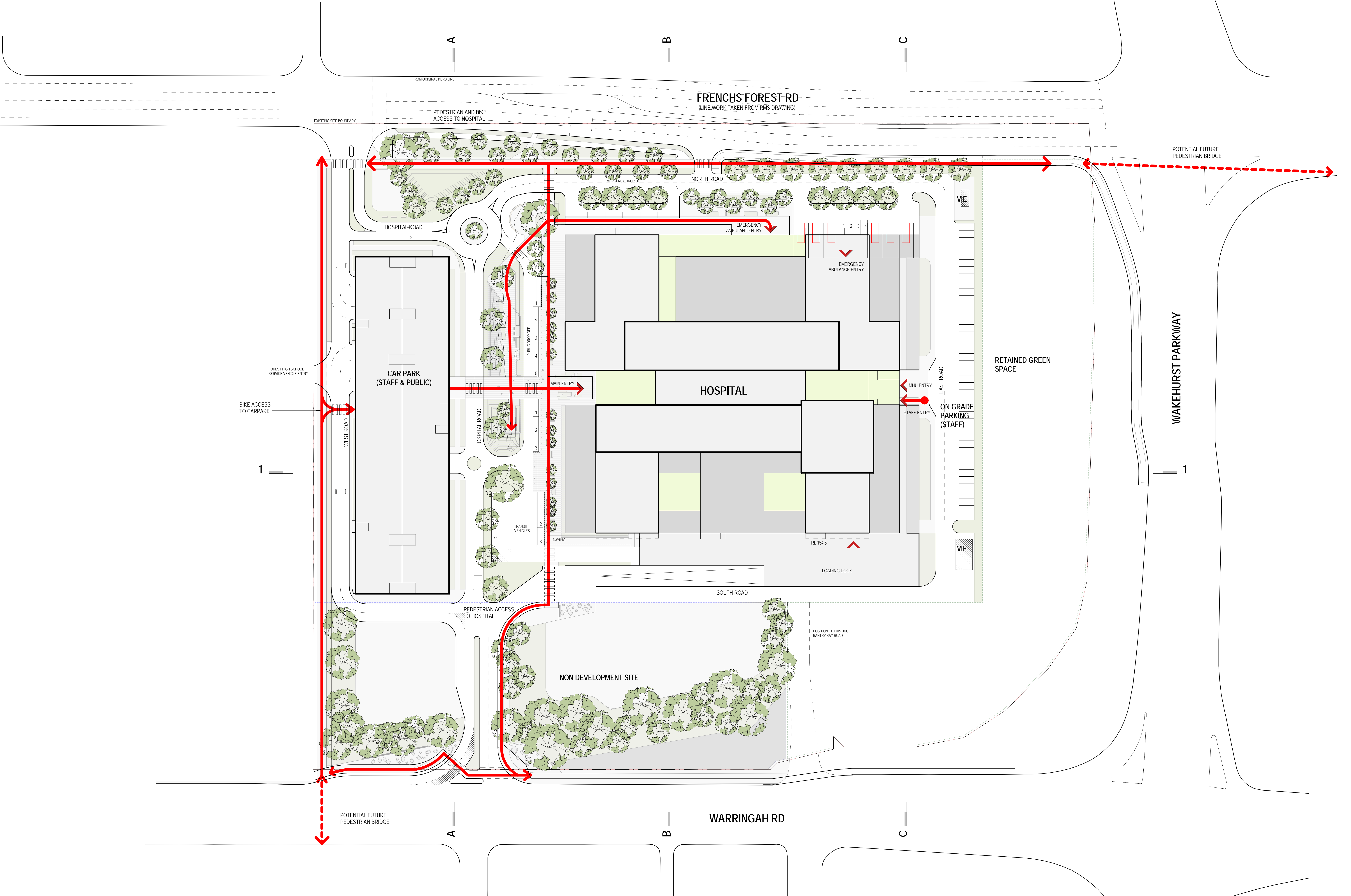
AVERAGE DAILY WIND AND SOLAR ACCESS

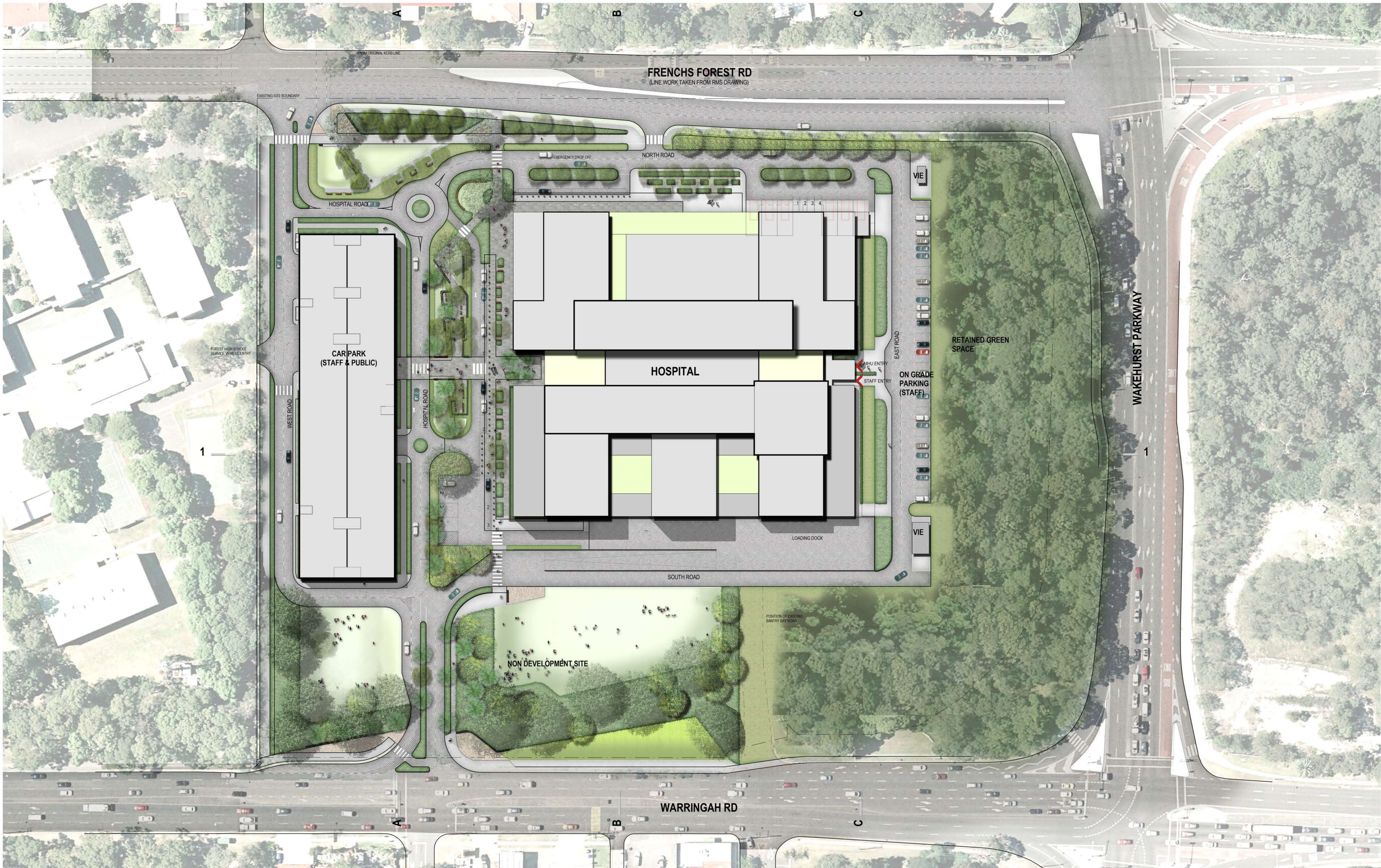


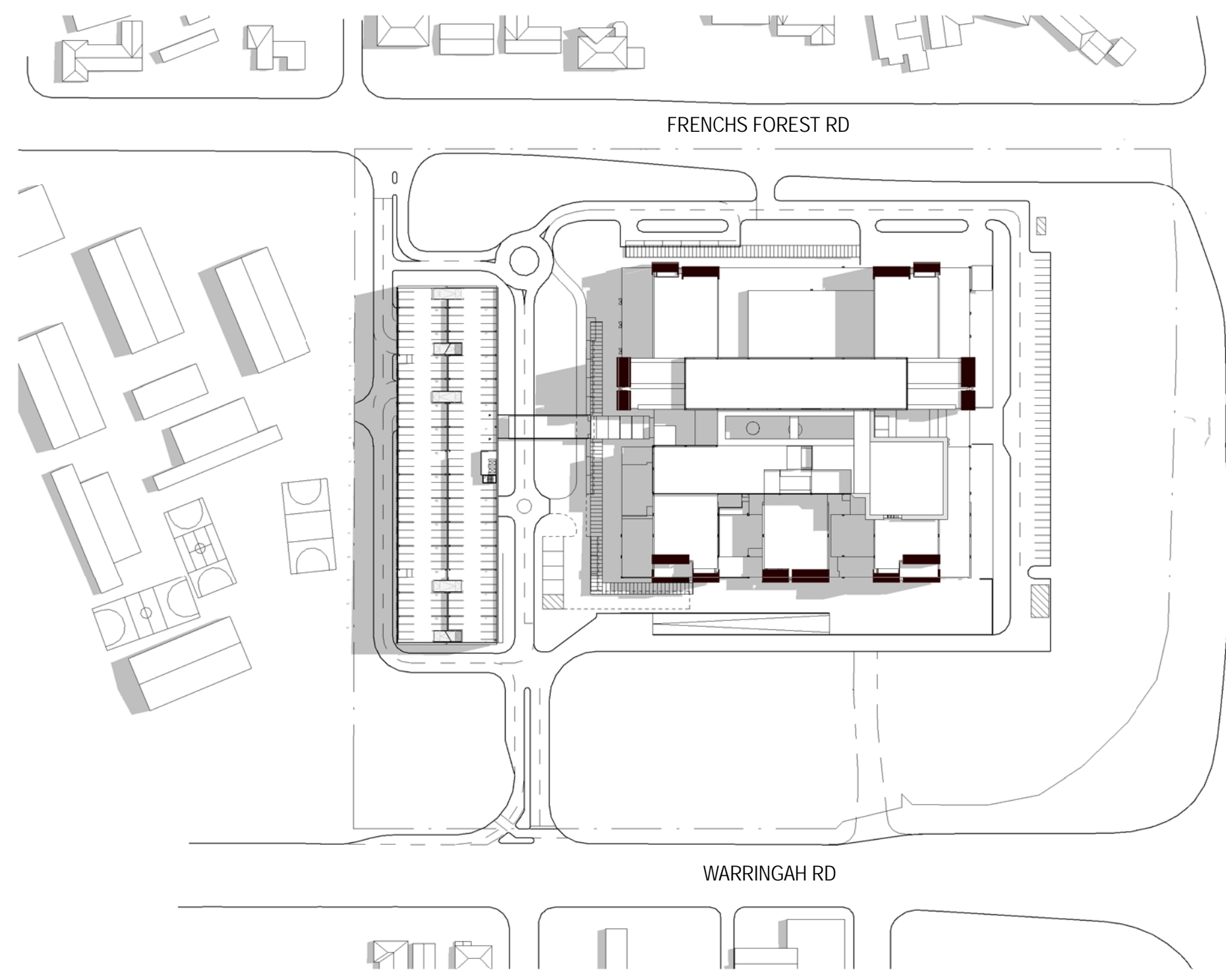
VIEWS FROM SITE



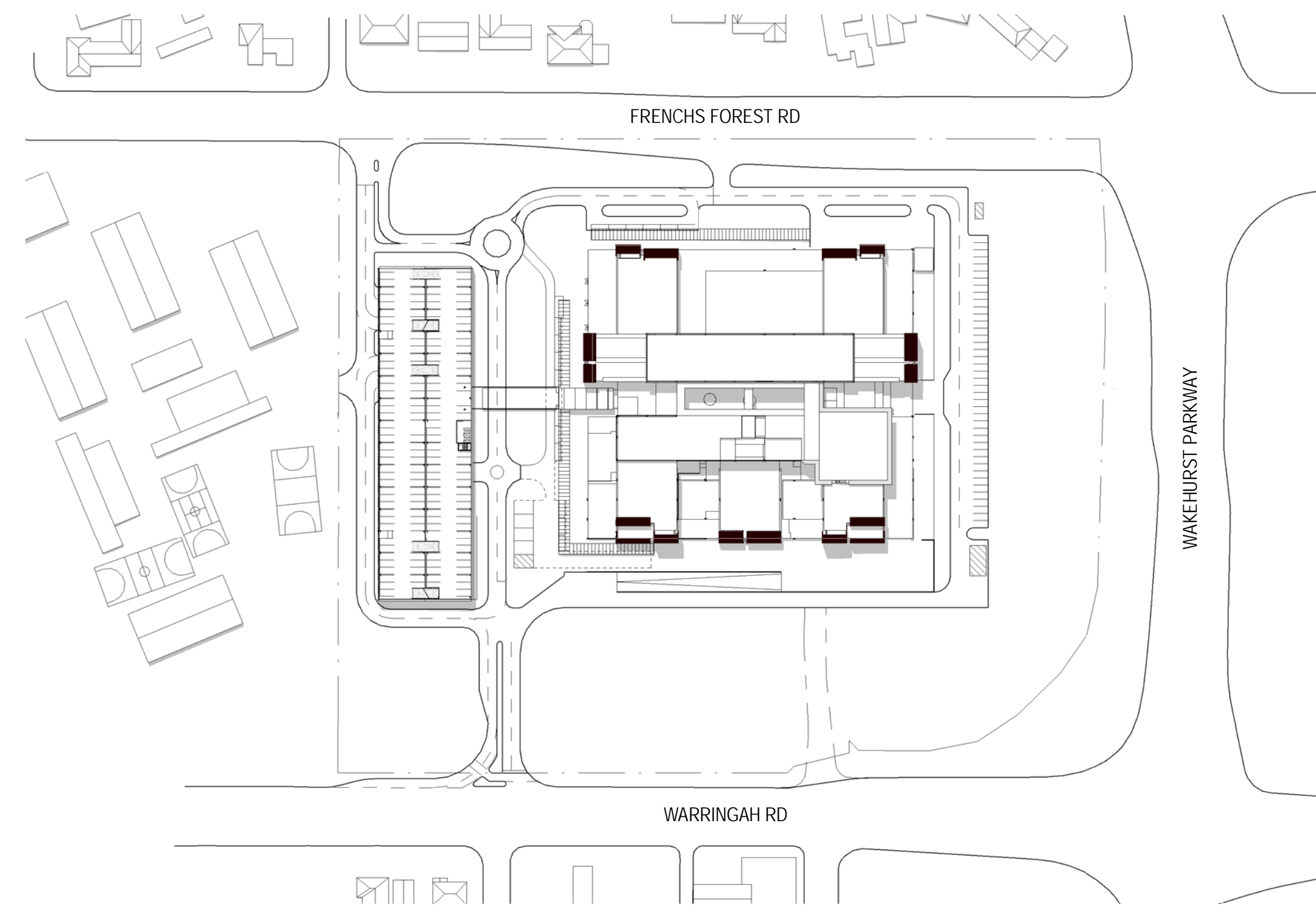




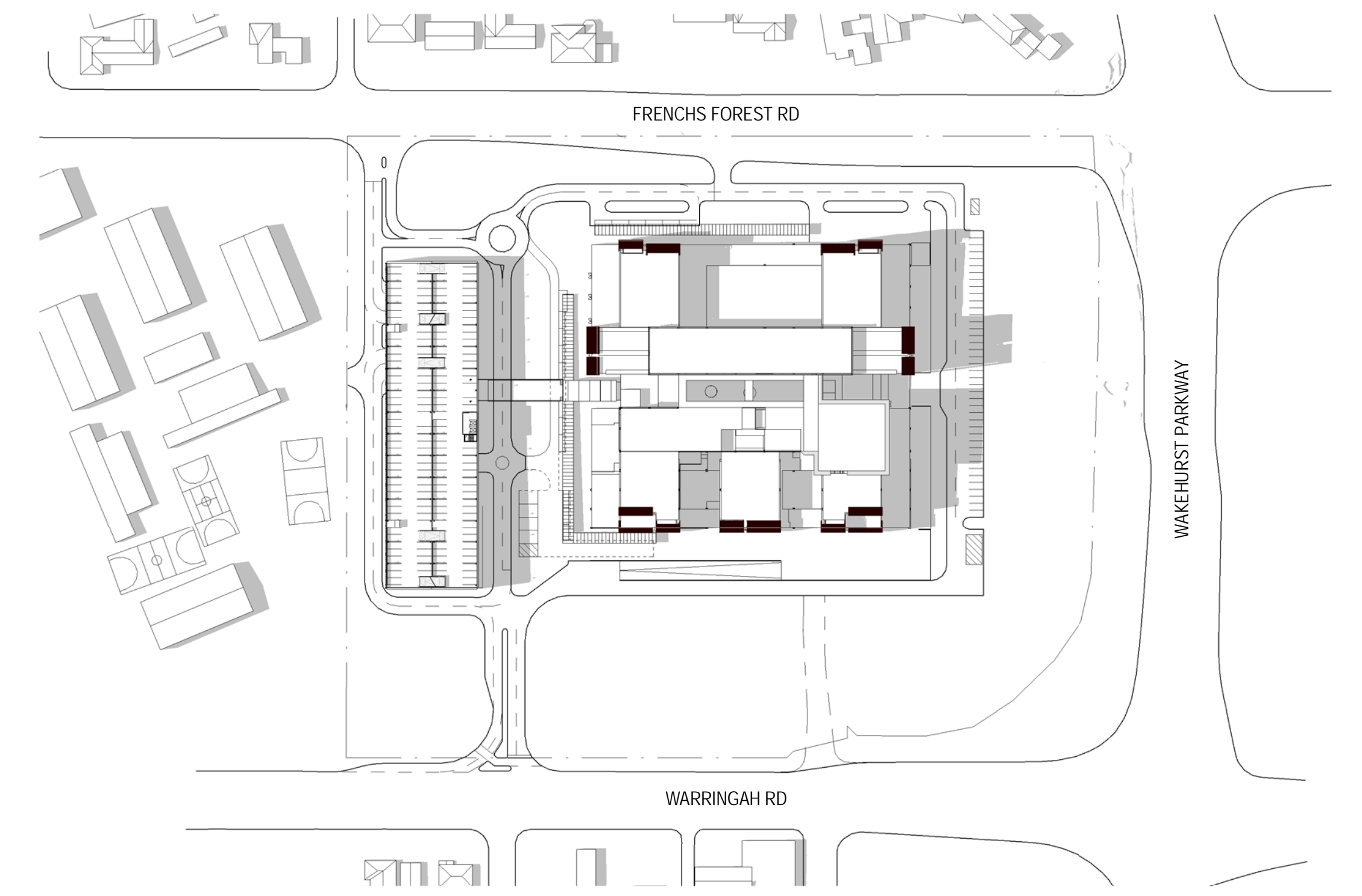




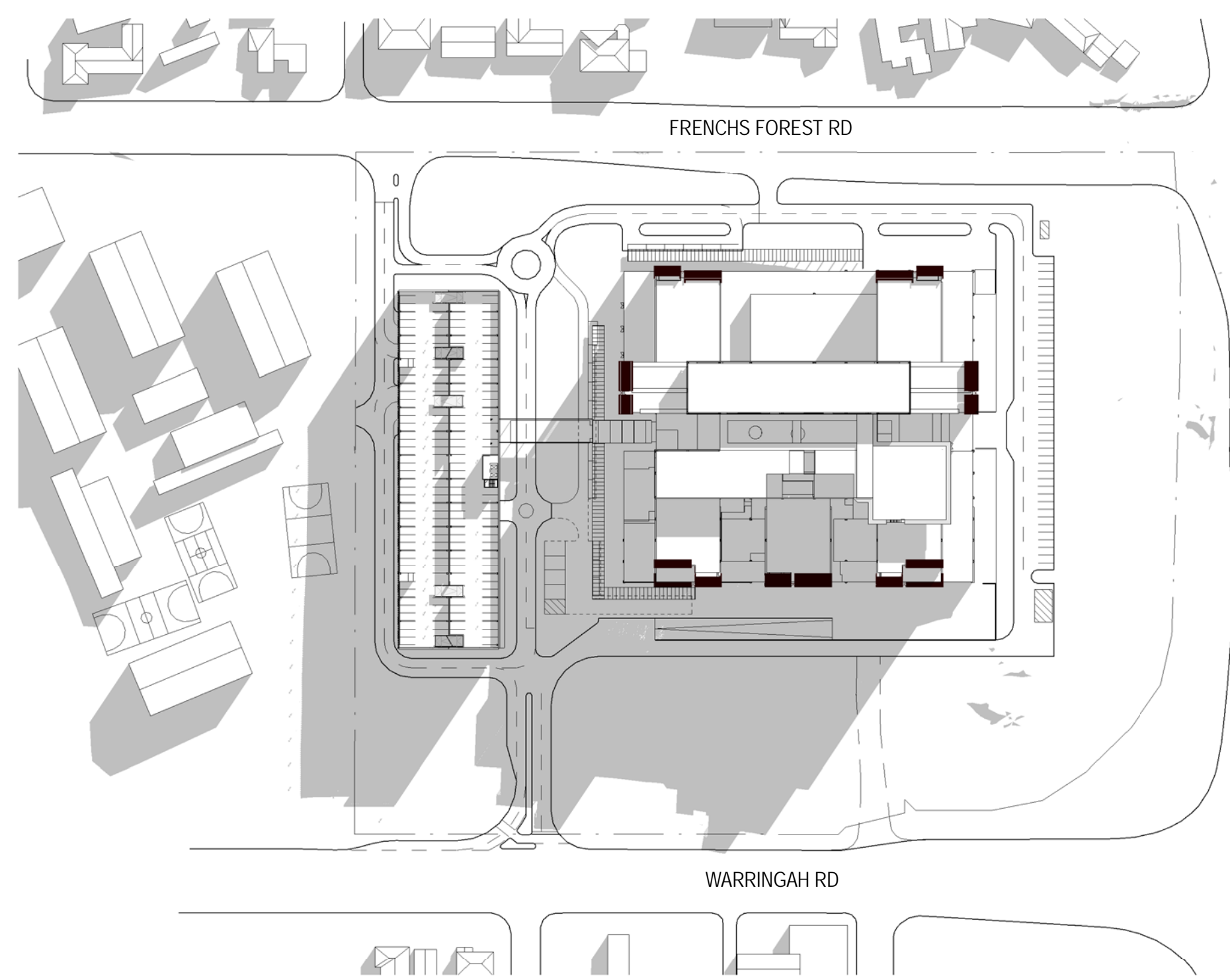
SHADOW STUDIES DEC 21 9AM



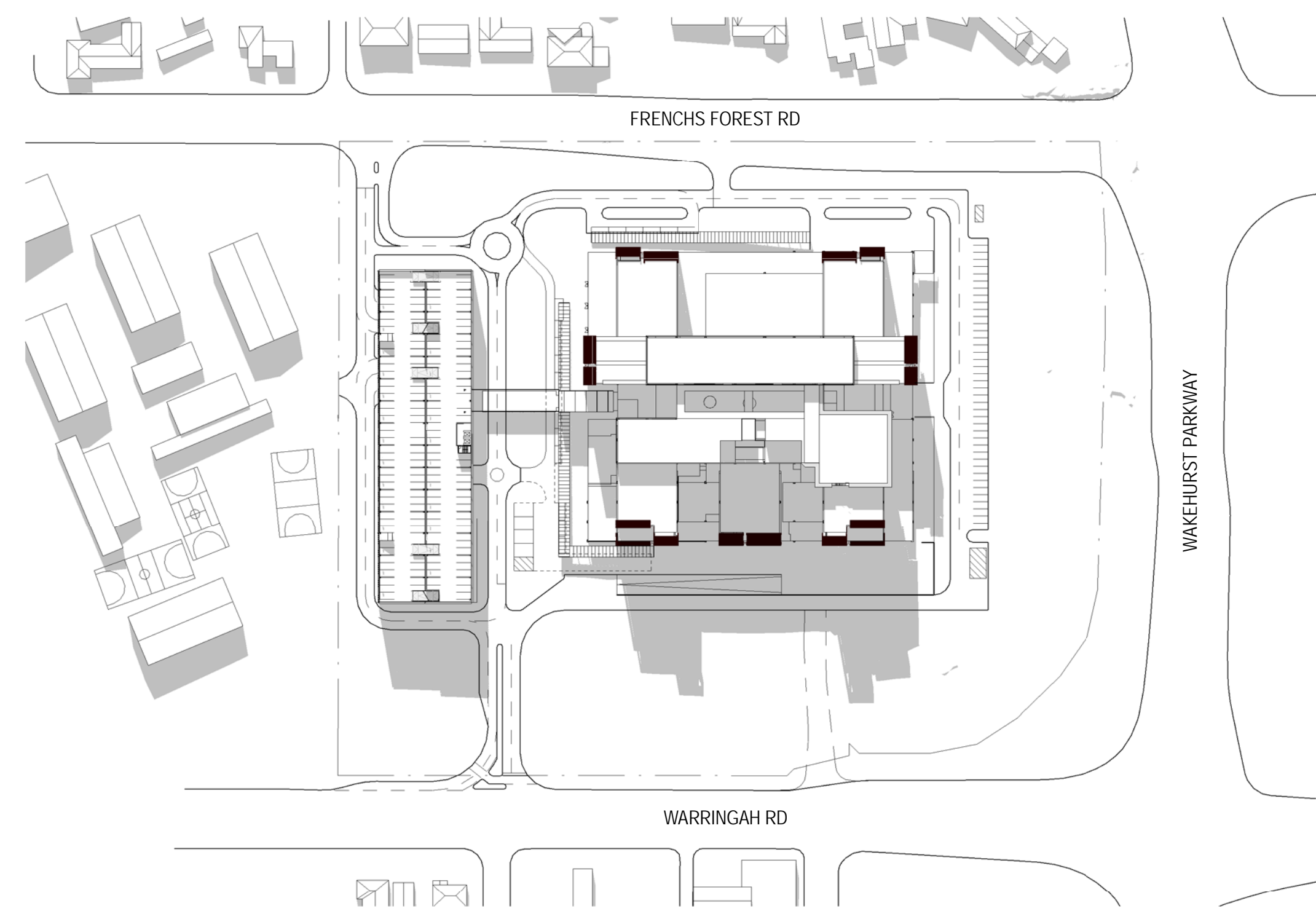
SHADOW STUDIES DEC 21 12PM



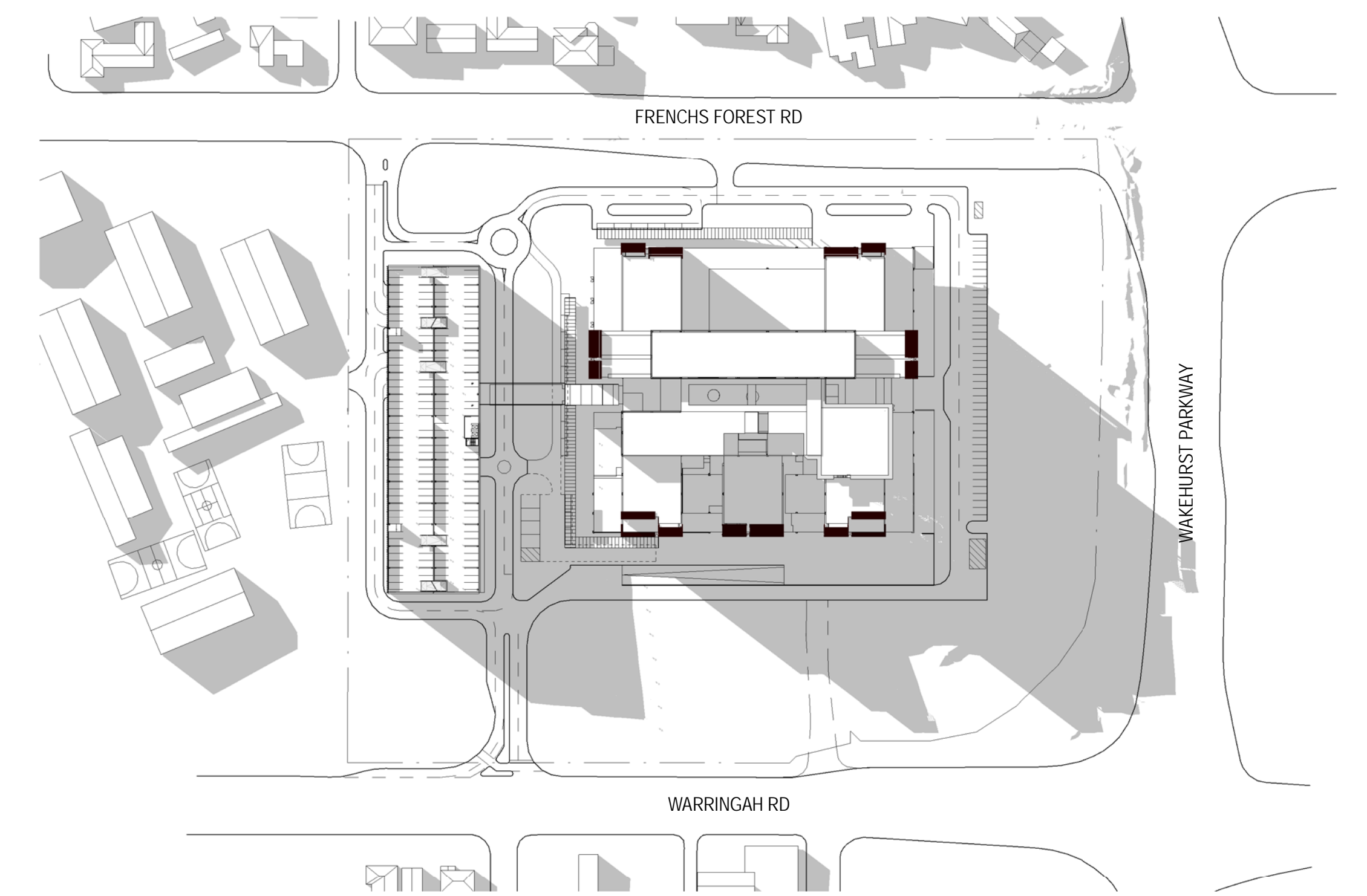
SHADOW STUDIES DEC 21 3PM



SHADOW STUDIES JUNE 21 9AM



SHADOW STUDIES JUNE 21  
12PM



SHADOW STUDIES JUNE 21 3PM



EXISTING VIEW FROM WAKEHURST PARKWAY



PROPOSED VIEW FROM WAKEHURST PARKWAY



EXISTING VIEW FROM FRENCHS FOREST ROAD



PROPOSED VIEW FROM FRENCHS FOREST ROAD

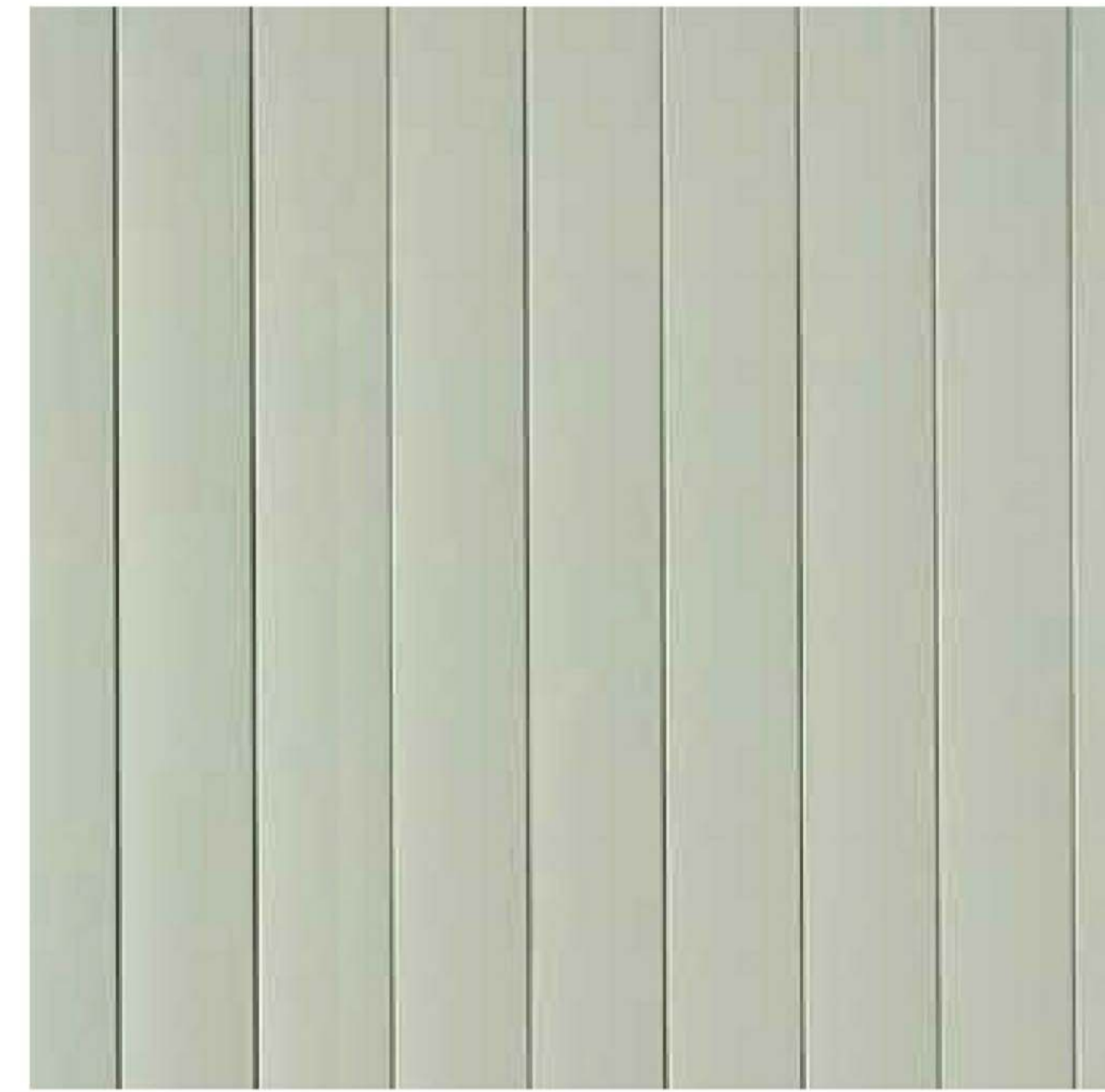


EXISTING VIEW FROM HILMER ST

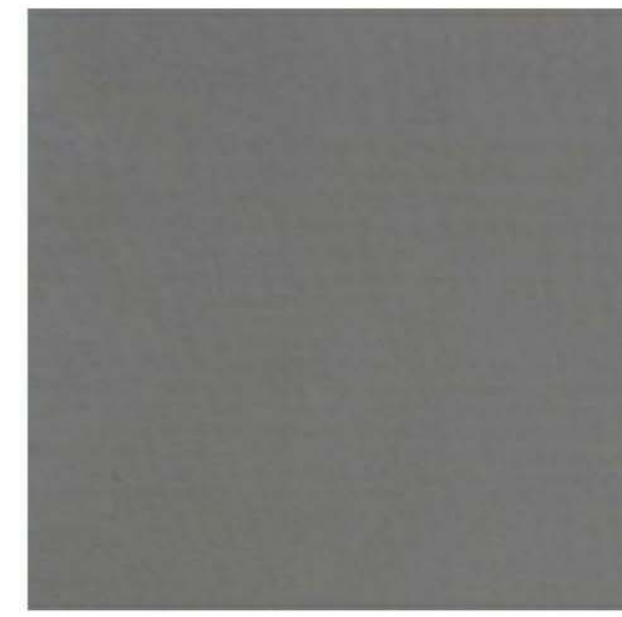


PROPOSED VIEW FROM HILMER ST

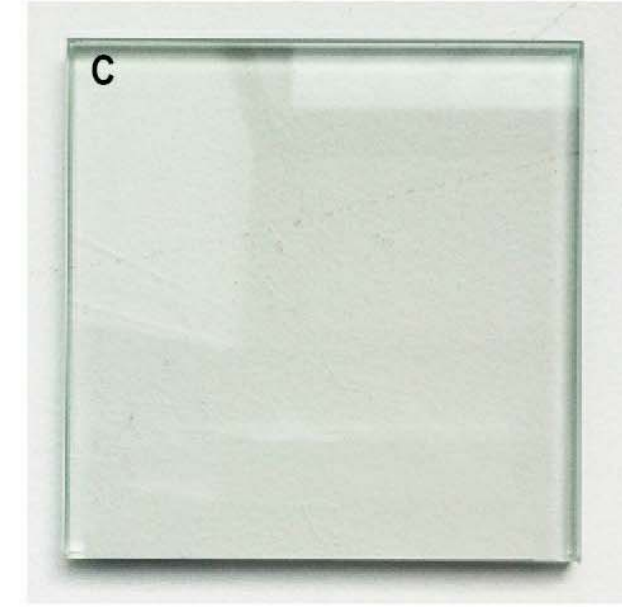
**HOSPITAL**



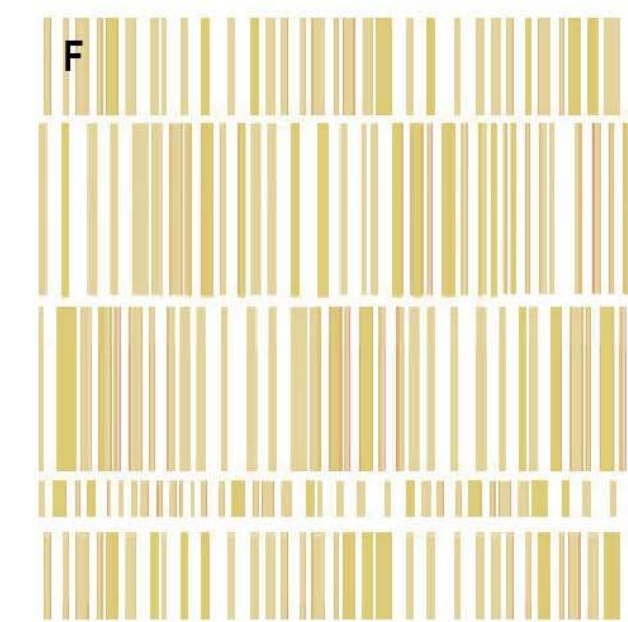
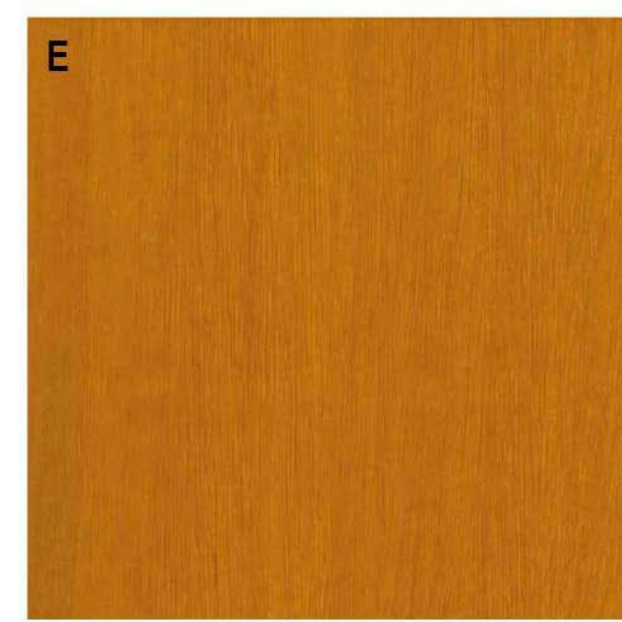
**A**  
**PRODUCT:** HUNTER DOUGLAS COMMERCIAL INVERTED RIB OR EQUAL  
**DESCRIPTION:** ALUMINIUM COATED STEEL, PREFINISHED, WHITE/OFF WHITE COLOUR, VERTICAL RIBS AT 300MM  
**USAGE:** EXTERIOR TYPICAL FACADE



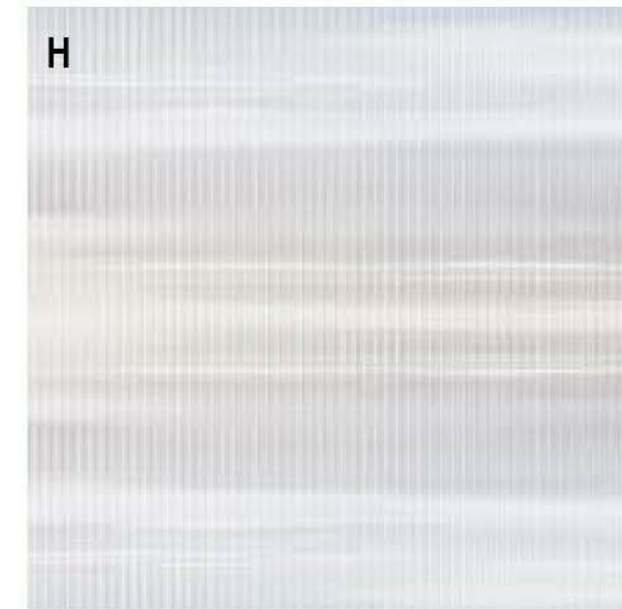
**B**  
**PRODUCT:** COMPRESSED FIBRE CEMENT PANELS  
**DESCRIPTION:** PREFABRICATED AND PREFINISHED, COLOUR TO MATCH GLASS IN WINDOWS  
**USAGE:** EXTERIOR TYPICAL FACADE, ABOVE WINDOWS



**D**  
**PRODUCT:** LYSAGHT LONGLINE 305 OR EQUAL  
**DESCRIPTION:** COATED STEEL PANEL WITH 48MM DEEP RIBS  
**USAGE:** EXTERIOR CLADDING OF FRAMES ON HOSPITAL

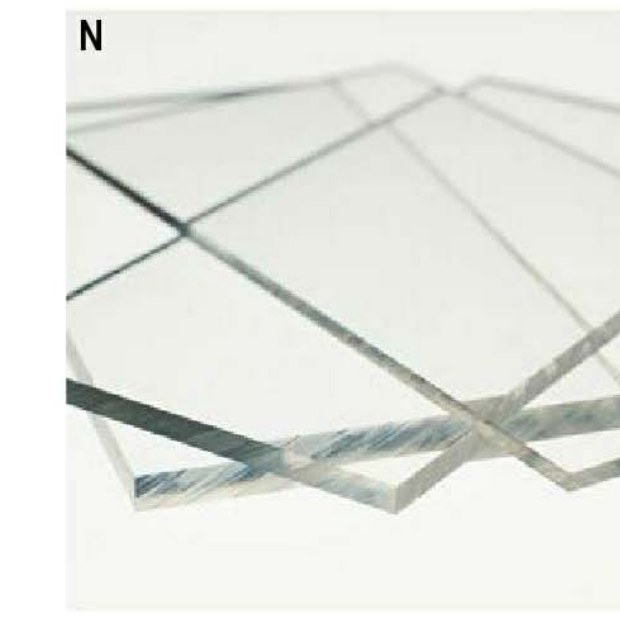
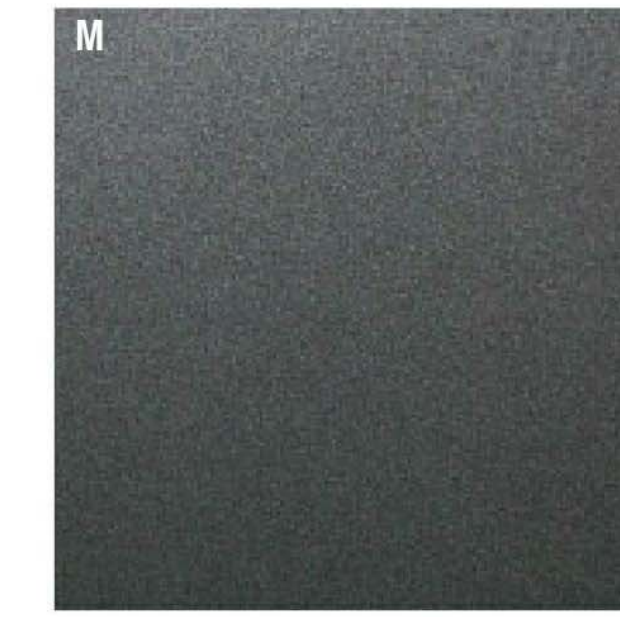


**E**  
**PRODUCT:** PRODEMA PRODEX OR EQUAL  
**DESCRIPTION:** COMPOSITE PANELS WITH NATURAL WOOD VENEER  
**USAGE:** INTERIOR OF FRAMES  
**F**  
**PRODUCT:** VIRIDIAN SERAPHIC CUSTOM OR EQUAL, PATTERNED FRITTED GLASS  
**DESCRIPTION:** TOUGHENED DECORATIVE GLASS PANELS WITH COLOURED PATTERNS PRINTED PRIOR TO TOUGHENING. REFLECTIVE FRITTED PATTERNS TO BE APPLIED AFTERWARDS  
**USAGE:** EXTERIOR VISION WHERE FRAMES ARE

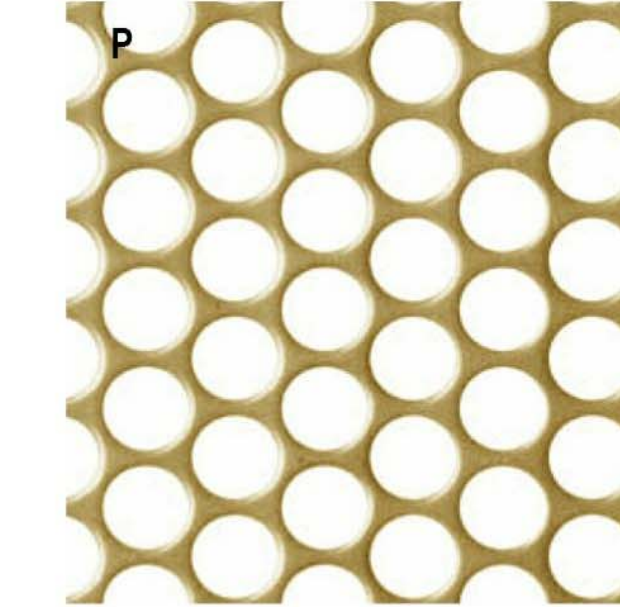
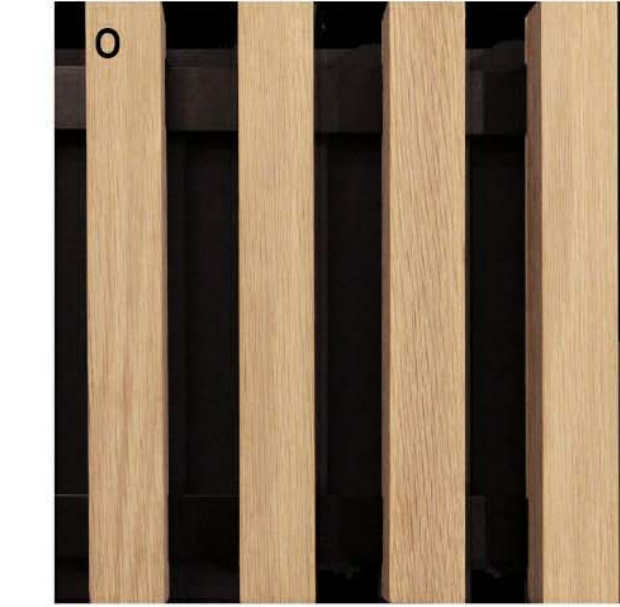


**H**  
**PRODUCT:** DANPALON OPAL, OR EQUAL  
**DESCRIPTION:** WAFFLE POLYCARBONATE PANEL  
**USAGE:** EASTERN ATRIUM FACADE, LEVELS 3 TO 5

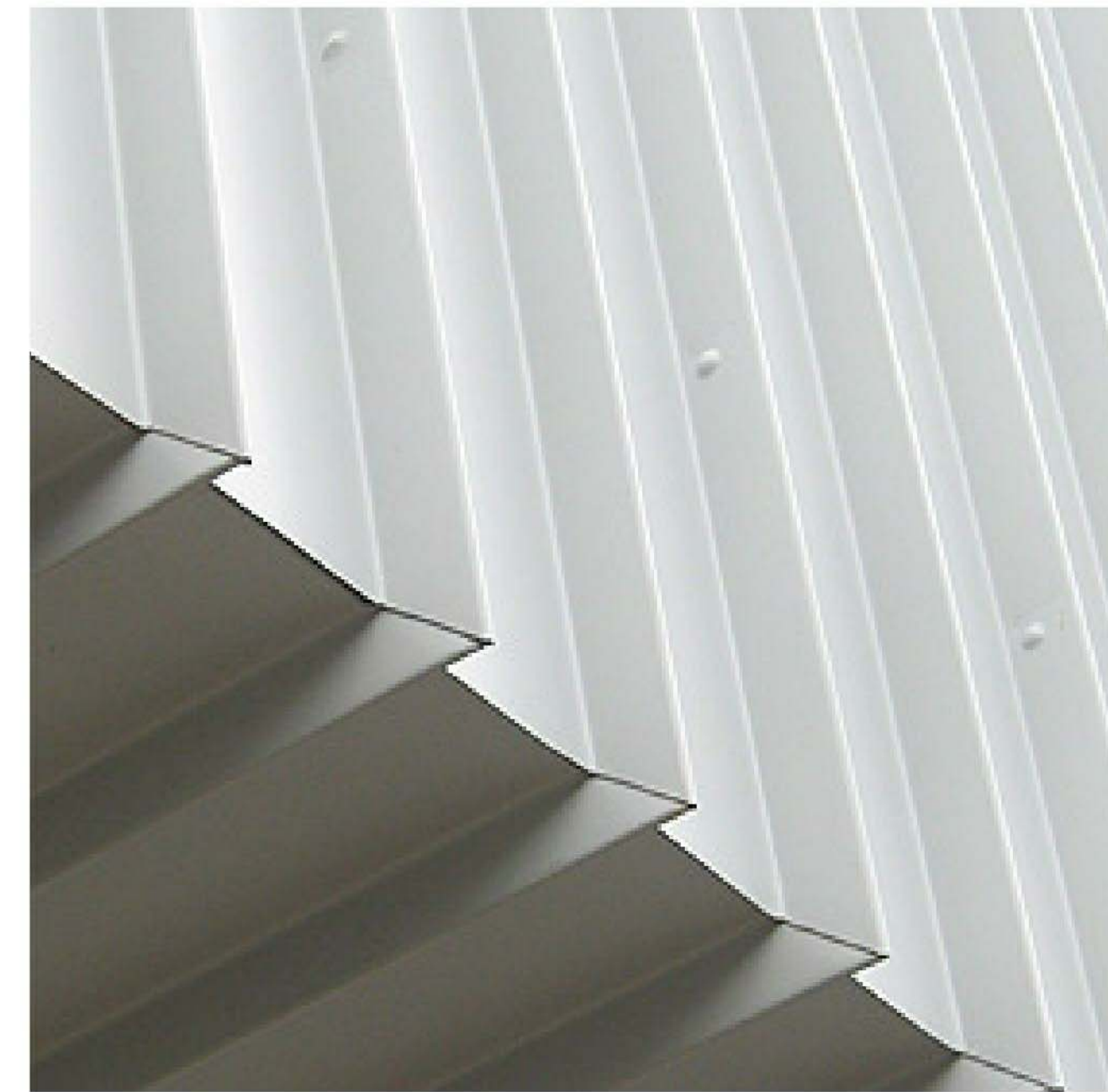
**ENTRY CANOPY**



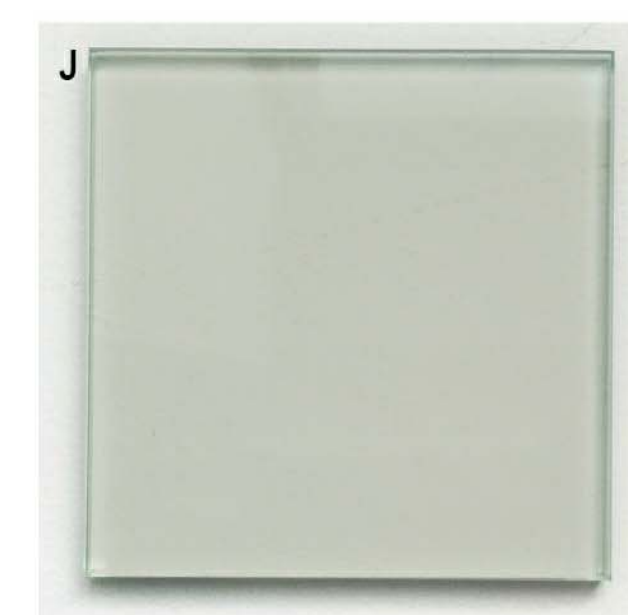
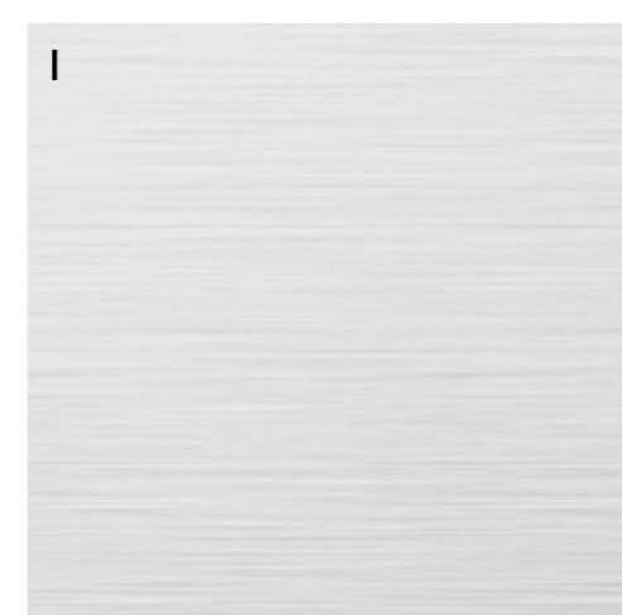
**M**  
**PRODUCT:** CANOPY STEEL  
**DESCRIPTION:** POWDER COATED DARK GREY  
**USAGE:** CANOPY STRUCTURE  
**N**  
**PRODUCT:** CLEAR SOLID POLYCARBONATE SHEET  
**USAGE:** ENTRY CANOPY



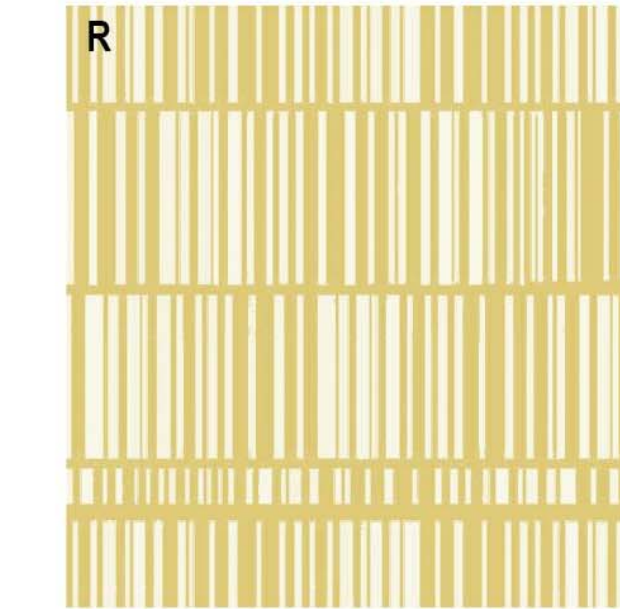
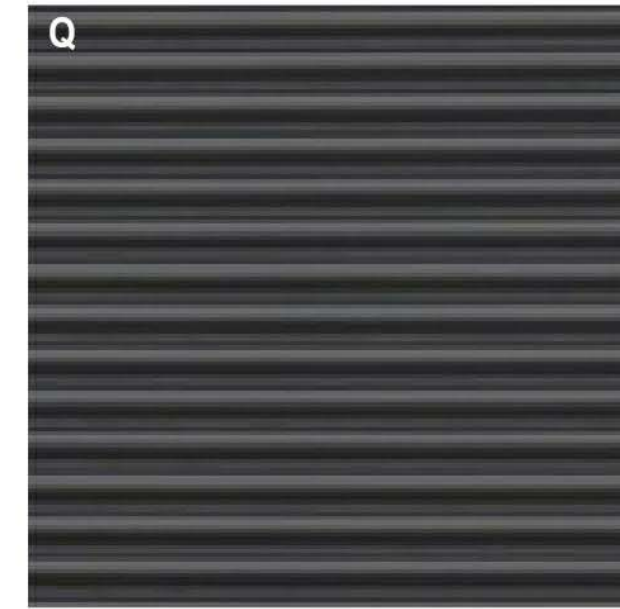
**O**  
**PRODUCT:** MODWOOD BATTENS OR EQUAL  
**DESCRIPTION:** COMPOSITE TIMBER LOOK MATERIAL MADE FROM RECYCLED WOOD AND PLASTIC  
**USAGE:** ENTRY CANOPY UNDERSIDE  
**P**  
**PRODUCT:** LOCKER GROUP PERFORATED PANEL OR EQUAL  
**DESCRIPTION:** POWDER COATED PERFORATED METAL SHEET WITH CUSTOM PERFORATION IN CONCEALED STEEL FRAME  
**USAGE:** EXTERIOR, IN FRONT OF FIRE STAIRS



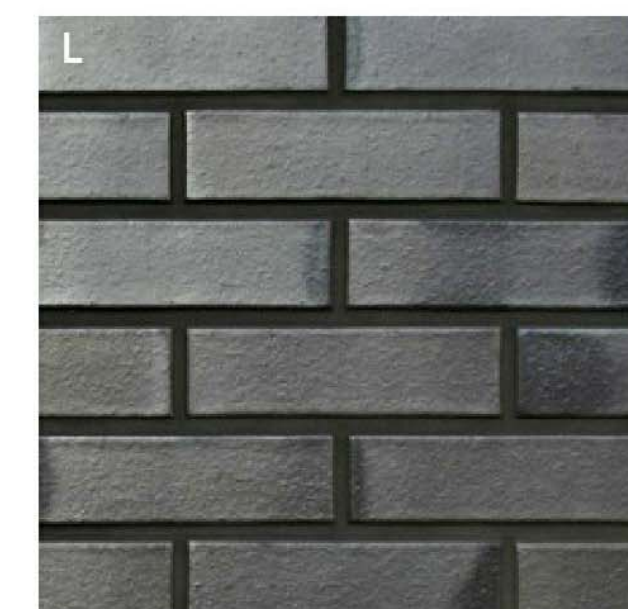
**G**  
**PRODUCT:** AUSTRAL BRICKS WHITE GLAZED BRICK OR EQUAL  
**DESCRIPTION:** INDULGENT WHITE  
**USAGE:** EXTERIOR OF HOSPITAL FACADE, LEVEL 1 NORTH SIDE AND GROUND LEVEL SOUTH SIDE



**I**  
**PRODUCT:** ALUMINIUM BOX SECTION  
**DESCRIPTION:** POWDERCOATED SILVER WITH FEATURE COLOUR ON INTERNAL FACE  
**USAGE:** SUN SHADES ON NORTH, EAST AND WEST FACADES  
**J**  
**PRODUCT:** SPANDREL GLASS  
**DESCRIPTION:** SOLID COLORBACK GLASS  
**USAGE:** WINDOWS WITH SPANDRAL AND ATRIUM GLASS WALL  
**K**  
**PRODUCT:** PLANT ROOM LOUVRES, DARK GREY  
**USAGE:** PLANT ROOMS

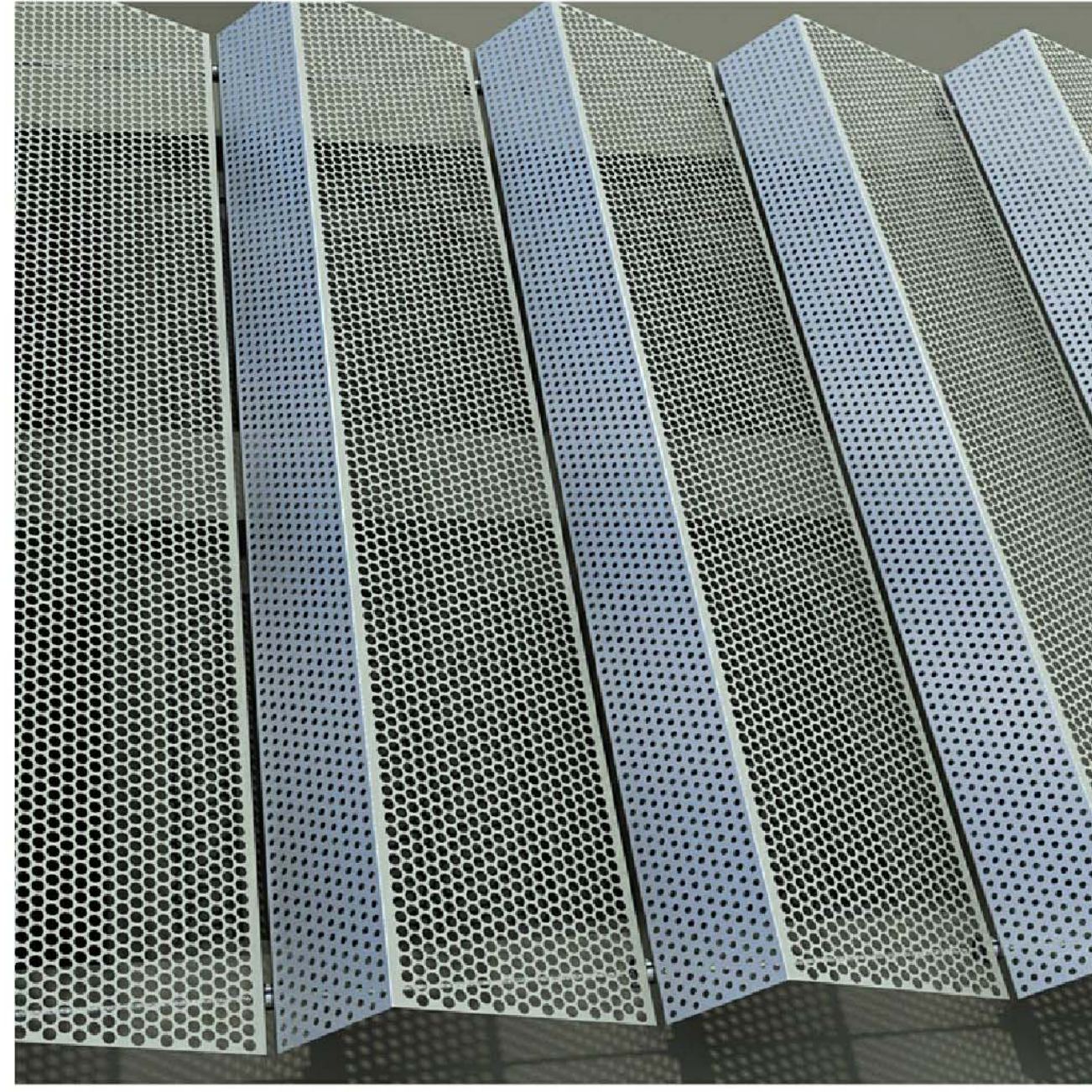


**Q**  
**PRODUCT:** INDUSTRIAL ROLLER DOOR  
**DESCRIPTION:** BLACK  
**USAGE:** LOADING DOCK  
**R**  
**PRODUCT:** PREFINISHED FC SHEET, FRITTED PATTERN  
**DESCRIPTION:** FRIT TO MATCH ADJACENT GLASS  
**USAGE:** EXTERIOR, ENDS TO FRAMES



**L**  
**PRODUCT:** BLACK GLAZED BRICKS  
**USAGE:** LOADING DOCK SOUTH AND EAST FACADE

**CAR PARK**



**A**

**PRODUCT:** LOCKER GROUP ATMOSPHERE OR EQUAL

**DESCRIPTION:** FOLDED PERFORATED ALUMINIUM PANELS ON A CABLE FIXING SYSTEM

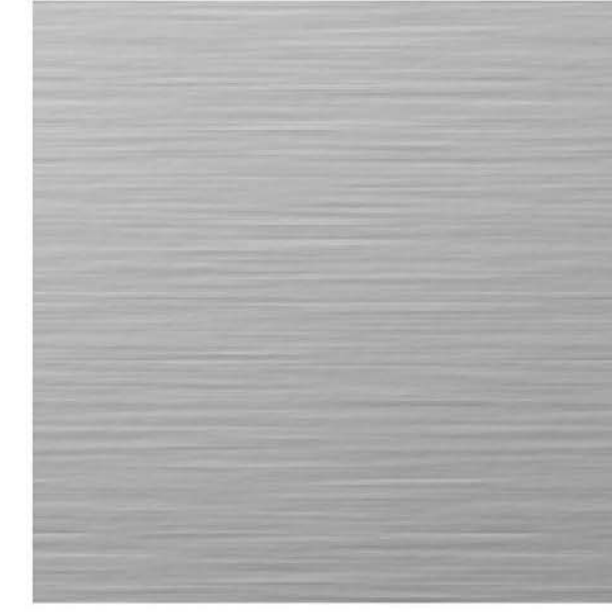
**USAGE:** EXTERIOR, CAR PARK NORTH AND EAST FACADE



**D**

**PRODUCT:** STAINLESS STEEL CABLE CLIMBERS

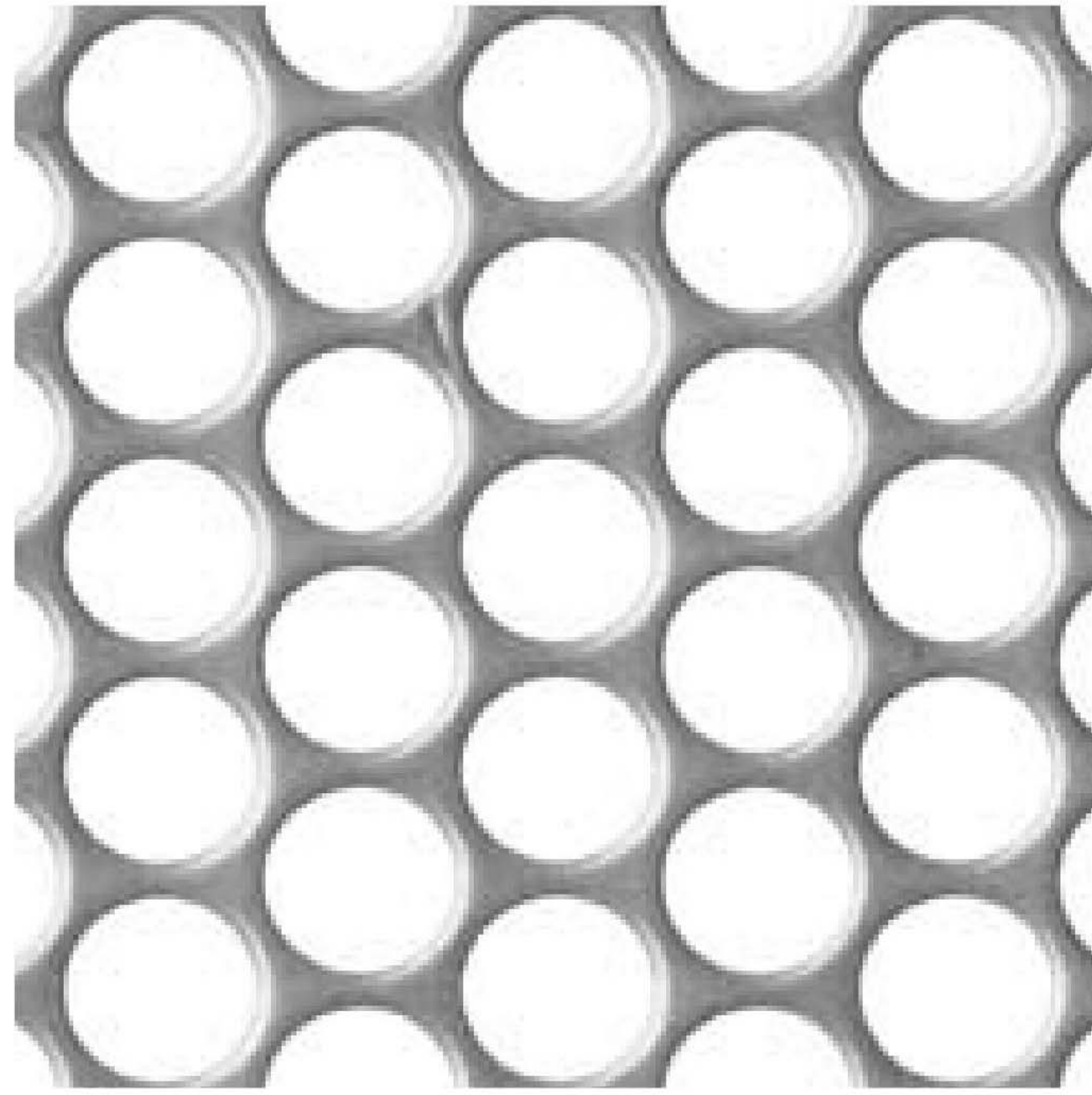
**USAGE:** EXTERIOR, CAR PARK GROUND



**E**

**PRODUCT:** FLAT PLATE STEEL BARRIERS

**USAGE:** EXTERIOR, CAR PARK WEST AND EAST

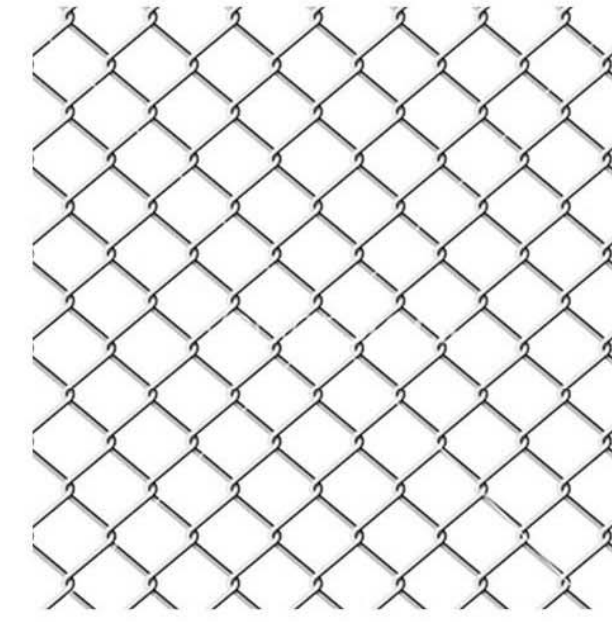


**B**

**PRODUCT:** LOCKER GROUP PERFORATED ALUMINIUM PANEL OR EQUAL

**DESCRIPTION:** FLAT PERFORATED ALUMINIUM PANELS

**USAGE:** EXTERIOR, CAR PARK NORTH FACADE



**F**

**PRODUCT:** CYCLONE MESH

**USAGE:** EXTERIOR, CAR PARK WEST FACADE FULL HEIGHT

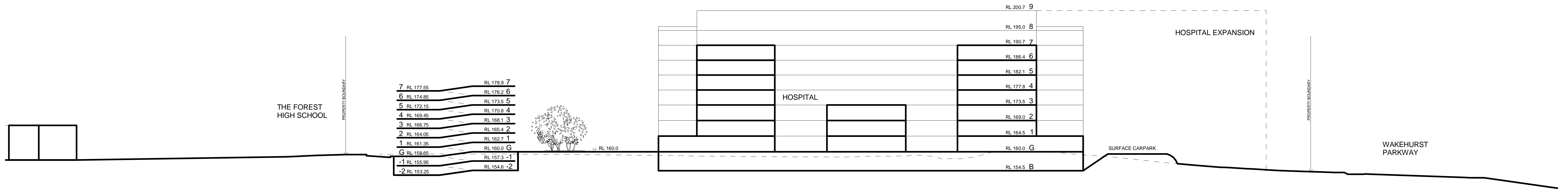


**C**

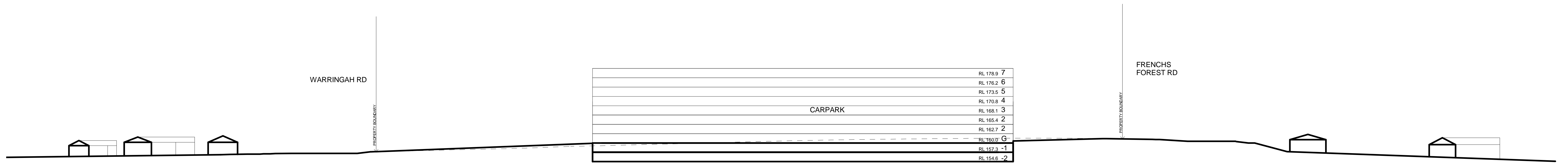
**PRODUCT:** AUSTRAL BRICKS WHITE GLAZED BRICK OR EQUAL

**DESCRIPTION:** INDULGENT WHITE

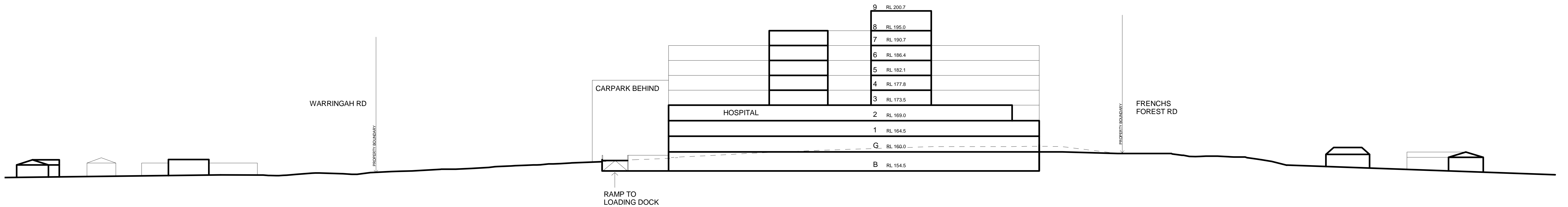
**USAGE:** EXTERIOR OF CAR PARK, GROUND LEVEL



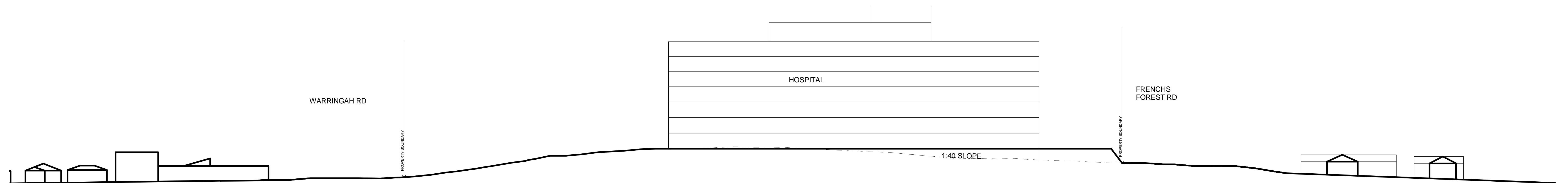
SECTION 1-1



SECTION A-A



SECTION B-B



SECTION C-C