

Vincentia Harvest Area
Provisionally Conditionally Approved
 Jervis Bay
 Operation Under Rainfall Conditions

Testing Requirements

Rainfall Criteria

Mandatory Testing
 Monthly testing (no greater than 30 day intervals) is required to support classification. Choose adverse conditions for monthly testing, when possible.

5 rounds of testing in the open status under adverse conditions are required to maintain classification.

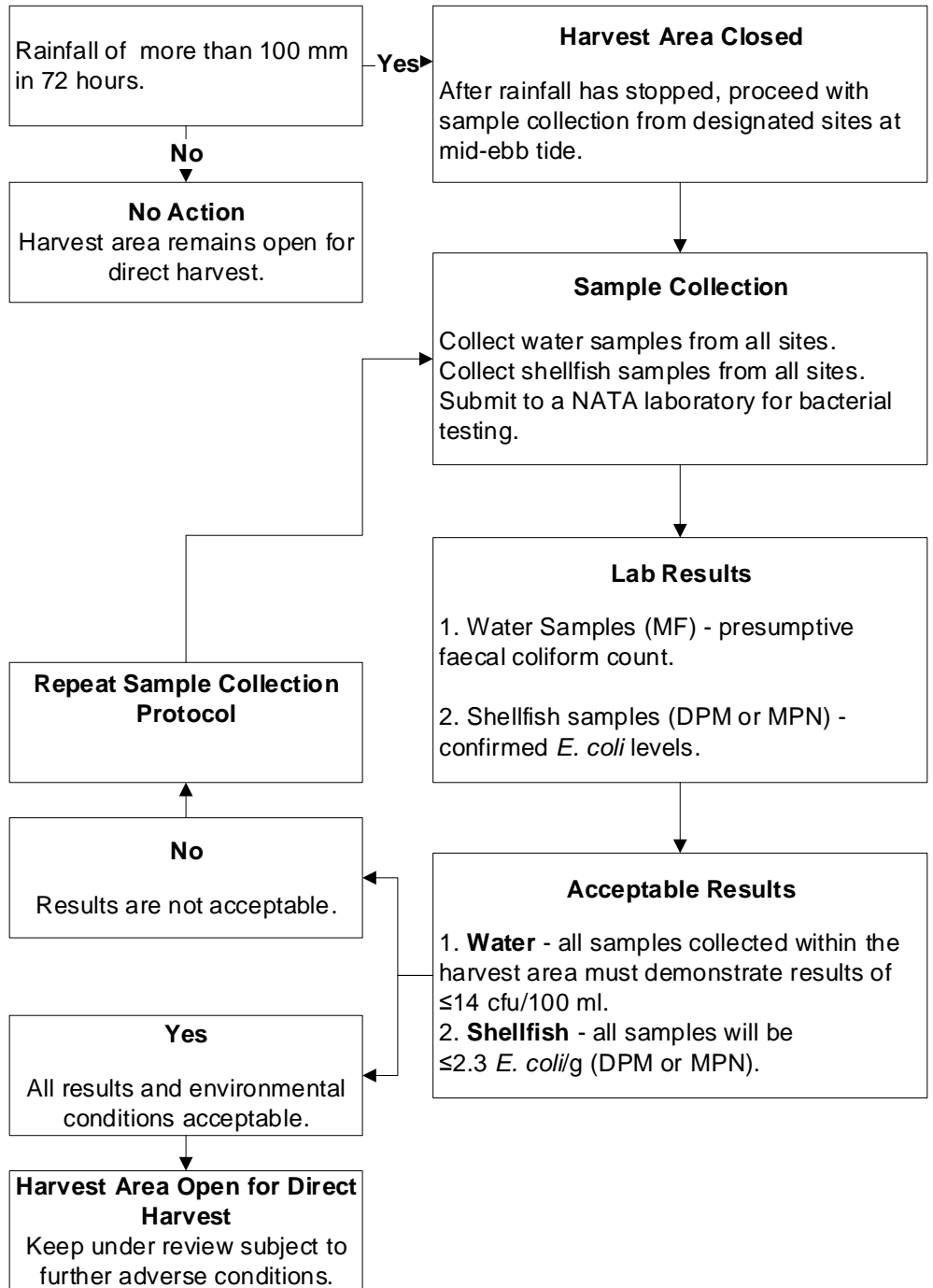
Adverse includes: Rainfall of 60 - 100 mm in 72 hours.

Rainfall events are preferred but sampling during Christmas or Easter holidays and spring tides can supplement the dataset when an adverse rainfall event has not occurred during the previous two months.

Adverse sampling during a seasonal closure will be credited.

Sampling during less rainfall, Christmas or Easter holidays and spring tides can supplement the dataset when adverse rainfall has not occurred.

Additional testing will enable NSWSP to modify the management plan and formally classify the area. More data are needed coinciding with rainfall.



1. Rainfall is measured at BOM Vincentia rain gauge. BOM Jervis Bay Airfield is a reference gauge. Local rainfall observations can be used to close the harvest area
2. It is the responsibility of farmers to ensure that the area is open prior to harvest.
3. Formal closure and reopening of the harvest area is the responsibility of the NSW Food Authority.
4. NSW Food Authority will enforce a local closure of the harvest area.
5. **Required water sites are 1, 2, 3, 4, 5, 6 and 7.**
6. **Required shellfish site is 22 when activated. Biotoxin samples will be collected from the same shellfish site.**
7. **Required phytoplankton sites are site 1P, 2P and 3P.**
8. The NSWSP and JBSP coordinator will liaise regarding environmental conditions and sampling arrangements.