



## **Construction Parking and Access Strategy – Performance Report (H2, 2022)**

SMWSTCTP-AFJ-1NL-TF-RPT-000005 Revision 00

Sydney Metro West – Central Tunnelling Package





---

## CONTENTS

<b>1. INTRODUCTION .....</b>	<b>3</b>
<b>2. PROJECT WORKS DURING THE REPORTING PERIOD.....</b>	<b>3</b>
<b>2.1 PROJECT OVERVIEW .....</b>	<b>3</b>
<b>2.2 SYDNEY OLYMPIC PARK .....</b>	<b>3</b>
<b>2.3 NORTH STRATHFIELD.....</b>	<b>4</b>
<b>2.4 BURWOOD NORTH.....</b>	<b>6</b>
<b>2.5 FIVE DOCK.....</b>	<b>6</b>
<b>2.6 THE BAYS.....</b>	<b>7</b>
<b>3. SUMMARY OF MONITORING.....</b>	<b>9</b>
<b>4. CONCLUSION.....</b>	<b>9</b>
<b>APPENDIX A – MONITORING MAPS .....</b>	<b>10</b>
<b>A.1 NORTH STRATHFIELD .....</b>	<b>10</b>
<b>A.2 BURWOOD SITE .....</b>	<b>10</b>
<b>A.3 FIVE DOCK SITE .....</b>	<b>11</b>
<b>APPENDIX B – MONITORING RESULTS .....</b>	<b>12</b>

---

## 1. INTRODUCTION

This report has been prepared to meet the requirements of Condition of Approval (CoA) D91(k) which requires a report to be prepared on the monitoring of construction parking for the Sydney Metro West Central Tunnelling Package (CTP Works). It outlines the results of parking monitoring for the second six-monthly period and covers from July 2022 to December 2022.

---

## 2. PROJECT WORKS DURING THE REPORTING PERIOD

### 2.1 PROJECT OVERVIEW

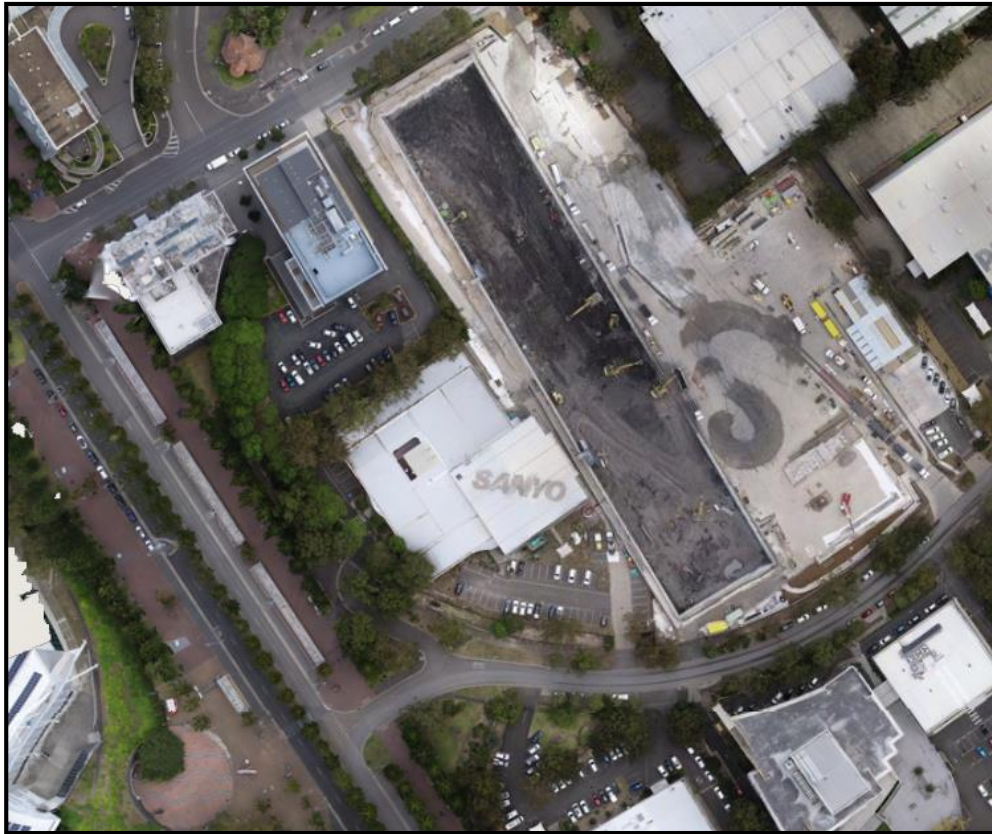
Construction of the CTP Works commenced in January 2022 after approval of the Construction Environmental Management Plan (CEMP) by DPIE in late December 2021. During this period of June 2022 to December 2022, various works took place across the project. A description of each site, their operation in this period and any changes that affected parking availability or performance are outlined below.

### 2.2 SYDNEY OLYMPIC PARK

For the full period from July 2022 to December 2022, limited onsite parking was available for staff working at the Sydney Olympic Park site. Due to staff numbers exceeding available parking, additional off-site parking was sourced in the paid parking facilities at Sydney Olympic Park and has supplemented available parking spaces for the staff on site. This has catered for the extra parking demand on the site for office staff. It has also catered for construction staff working on site.

Due to the limited on-street parking available at Sydney Olympic Park, and the availability of off-street parking facilities as well as on-site parking, no regular inspections have been documented. Observations suggest parking within the off-street facilities is ensuring minimal on-street parking utilised on local roads. The roads around Sydney Olympic Park are also timed spaces, limiting any opportunity for workers to park for extended periods.

FIGURE 1 – SYDNEY OLYMPIC PARK SITE (DRONE CAPTURE 21/12/2022)



### 2.3 NORTH STRATHFIELD

For the reporting period from July 2022 to December 2022, the North Strathfield site had minor construction works, with the site not expected to commence major construction works until early 2023. During this time, limited onsite parking was available for staff working at the North Strathfield site. Staff have been instructed to utilise public transport wherever possible considering the locality of the North Strathfield train station, and where not possible; carpool.

During the reporting period construction staff demands have been lower than anticipated in the initial CPAS. Pre-start attendance records show a peak of 29 workers in November 2022, with day-to-day numbers more typically 10 to 20 workers per day. The anticipated workforce at North Strathfield was noted in the CPAS as 56.

FIGURE 2 – NORTH STRATHFIELD SITE (DRONE CAPTURE 14/12/2022)





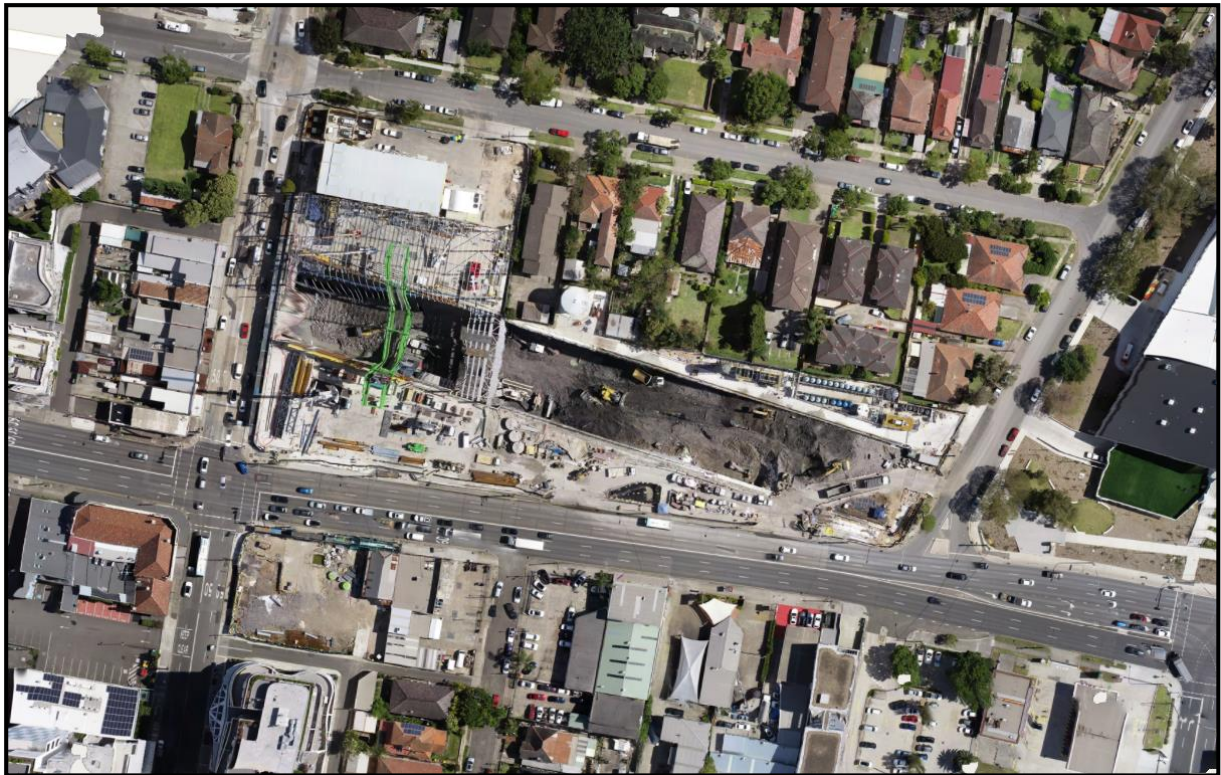
## 2.4 BURWOOD NORTH

For the full period from July 2022 to December 2022, limited onsite parking was available for staff working at the Burwood North site. Due to staff numbers exceeding available parking, workers have been directed to park in areas where high parking availability has been identified.

During the reporting period, discussions were ongoing with City of Canada Bay Council regarding the off-site Cintra parking option (proposed to be used as the primary parking location for worker vehicles), and as a result, workers have been parking legally on local roads away from the immediate site areas. The majority of these streets (e.g. Addison Ave) do not carry resident parking zones and AFJV has requested workers park further from site and avoid impacting roads immediately surrounding the site.

During this reporting period the Concord Oval redevelopment on Loftus Street, was ongoing. The Concord Oval Redevelopment appeared to have significant parking demand within the streets around the Loftus Street and Burton Street areas, during the reporting period.

FIGURE 3 – BURWOOD NORTH SITES (DRONE CAPTURE 21/12/2022)



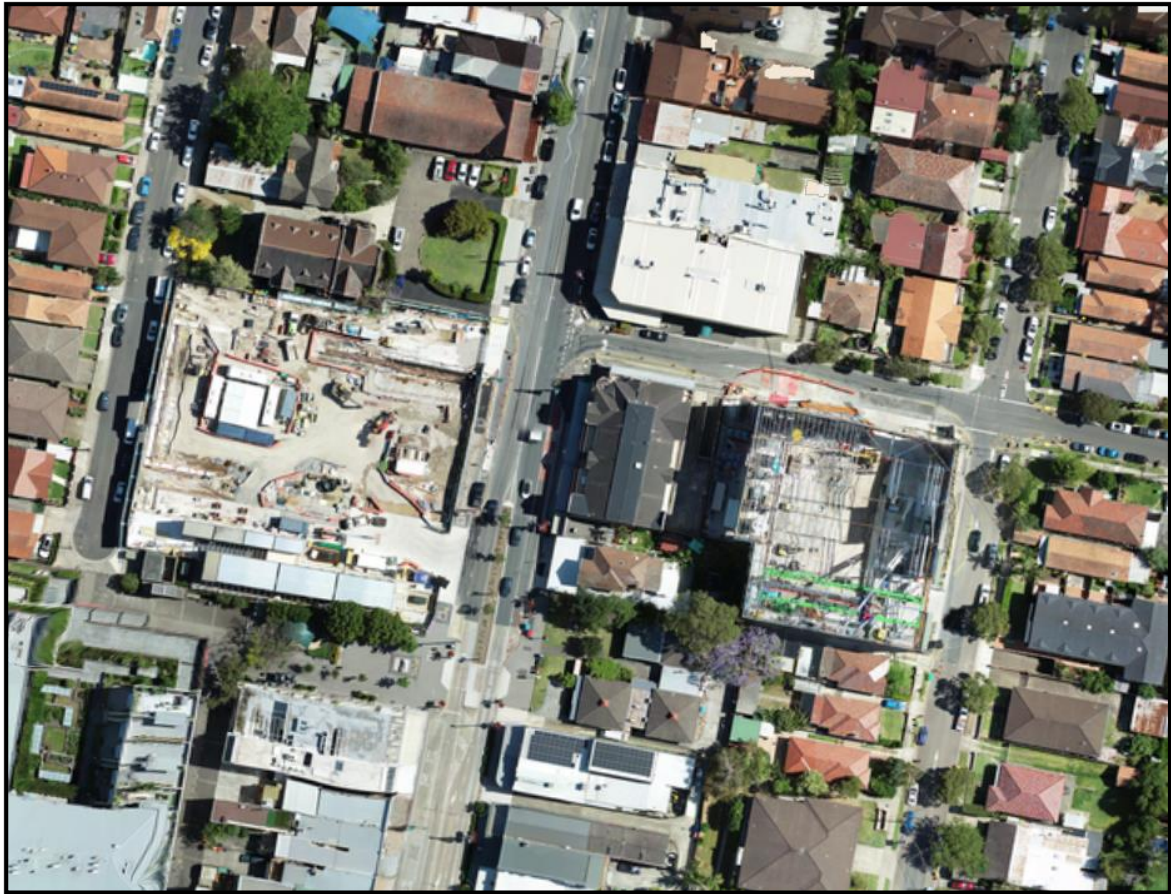
## 2.5 FIVE DOCK

The Five Dock site has limited on-site parking available and limited available land for establishment of any significant off-street parking facilities. During this reporting period construction staff demands have been lower than anticipated in the initial CPAS. Pre-start attendance records show a peak of 73 workers in November 2022, with day-to-day numbers more typically 40 to 60 workers per day. The anticipated workforce at Five Dock was noted in the CPAS as 124.

Similar to Burwood North, negotiations with City of Canada Bay Council for the use of other local road parking options remain ongoing, and as a result, workers have been parking legally on local roads away from the immediate site areas. The majority of these streets (e.g. Barnstaple Road) do

not carry resident parking zones and AFJV has requested workers park further from site and avoid impacting roads immediately surrounding the site.

FIGURE 4 – FIVE DOCK SITES (DRONE CAPTURE 07/12/2022)



## 2.6 THE BAYS

During this reporting period, The Bays site had available parking areas for staff and workers. The aerial image below provides an indication of the parking locations near site.

Due to the limited on-street parking available at The Bays site, and the availability of off-street parking facilities as well as on-site parking, no regular inspections have been documented. Observations suggest parking within the off-street facilities is resulting in workers not attempting to park on local roads.

Established pedestrian paths have been installed for workers traveling to and from the parking areas, as well as a pedestrian route from Robert Street, for workers catching public transport.



FIGURE 5 - THE BAYS SITE PARKING AREAS





---

### 3. SUMMARY OF MONITORING

AFJV completed monthly surveillance of the streets surround the Five Dock, Burwood North and North Strathfield worksites. The streets reviewed are as detailed in Appendix A. Each surveillance reviewed the number of AFJV workers parking in adjacent local streets and also recorded the utilisation of on-street parking.

The results for the period July to December 2022 show that there were 20 occasions where AFJV workers were recorded parking in local roads during surveillance activities. Although it is noted there were some instances of non-compliance across the sites, the percentage of workers parking in accordance with planned and designated parking areas (and minimising on-street parking) is greater than 98%.

When non-compliances were identified, the following actions were taken:

- The relevant site Project Manager was notified of the vehicle details to reprimand the vehicle owner and avoid recurrence.
- Workers reminded of parking requirements during prestart meetings with staff and workers.
- AFJV completed additional parking surveys in consultation with CoCB Council to identify additional areas which may provide feasible worker parking locations which do not cause impact to local residents (as noted above, during this reporting period these discussions with Council are ongoing).

---

### 4. CONCLUSION

In summary, whilst AFJV has identified a small number of non-compliances as noted in the monitoring results, the information shows around 98% compliance for workers parking in designated areas and not in the streets adjacent the tunnel sites.

The next report will focus on the reporting period from January to June 2023.

## APPENDIX A – MONITORING MAPS

### A.1 NORTH STRATHFIELD



### A.2 BURWOOD SITE





### A.3 FIVE DOCK SITE



## APPENDIX B – MONITORING RESULTS



Month: July 2022

Roads around station sites

Site	Inspection Date	Street	AFJV Worker vehicles parked on street (No.)	On-Street parking utilisation (%)
North Strathfield	6/07/2022	Queen Street	0	85%
		Wellbank Street	0	93%
		Waratah Street	0	93%
Burwood North	6/07/2022	Burton Street	0	100%
		Burwood Road*	0	100%
		Loftus Street	0	96%
Five Dock	6/07/2022	Great North Road	0	79%
		Waterview Street	1	96%
		Second Avenue	0	100%

Total average parking occupied by workers  
0.3%

Month: August 2022

Roads around station sites

Site	Inspection Date	Street	AFJV Worker vehicles parked on street (No.)	On-Street parking utilisation (%)
North Strathfield	15/08/2022	Queen Street	1	73%
		Wellbank Street	1	93%
		Waratah Street	0	91%
Burwood North	15/08/2022	Burton Street	1	100%
		Burwood Road*	0	58%
		Loftus Street	0	100%
Five Dock	15/08/2022	Great North Road	0	79%
		Waterview Street	0	86%
		Second Avenue	0	75%

Total average parking occupied by workers  
1.0%

Month: September 2022

Roads around station sites

Site	Inspection Date	Street	AFJV Worker vehicles parked on street (No.)	On-Street parking utilisation (%)
North Strathfield	9/09/2022	Queen Street	1	33%
		Wellbank Street	0	93%
		Waratah Street	0	88%
Burwood North	9/09/2022	Burton Street	1	94%
		Burwood Road*	0	71%
		Loftus Street	0	90%
Five Dock	9/09/2022	Great North Road	0	75%
		Waterview Street	2	93%
		Second Avenue	0	100%

Total average parking occupied by workers  
1.4%

Month: October 2022

Roads around station sites

Site	Inspection Date	Street	AFJV Worker vehicles parked on street (No.)	On-Street parking utilisation (%)
North Strathfield	10/10/2022	Queen Street	2	66%
		Wellbank Street	0	83%
		Waratah Street	0	86%
Burwood North	10/10/2022	Burton Street	2	94%
		Burwood Road*	0	76%
		Loftus Street	1	100%
Five Dock	10/10/2022	Great North Road	0	92%
		Waterview Street	0	70%
		Second Avenue	0	67%

Total average parking occupied by workers  
1.8%

Month: November 2022

Roads around station sites				
Site	Inspection Date	Street	AFJV Worker vehicles parked on street (No.)	On-Street parking utilisation (%)
North Strathfield	15/11/2022	Queen Street	0	84%
		Wellbank Street	0	93%
		Waratah Street	0	95%
Burwood North	15/11/2022	Burton Street	3	100%
		Burwood Road*	1	82%
		Loftus Street	0	90%
Five Dock	15/11/2022	Great North Road	0	100%
		Waterview Street	2	100%
		Second Avenue	0	100%

Total average parking occupied by workers  
2.2%

Month: December 2022

Roads around station sites				
Site	Inspection Date	Street	AFJV Worker vehicles parked on street (No.)	On-Street parking utilisation (%)
North Strathfield	9/12/2022	Queen Street	1	100%
		Wellbank Street	0	90%
		Waratah Street	0	93%
Burwood North	9/12/2022	Burton Street	0	94%
		Burwood Road*	0	90%
		Loftus Street	0	94%
Five Dock	9/12/2022	Great North Road	0	86%
		Waterview Street	0	85%
		Second Avenue	0	100%

Total average parking occupied by workers  
0.4%

Overall H2 2022  
Total average parking occupied by workers  
1.2%