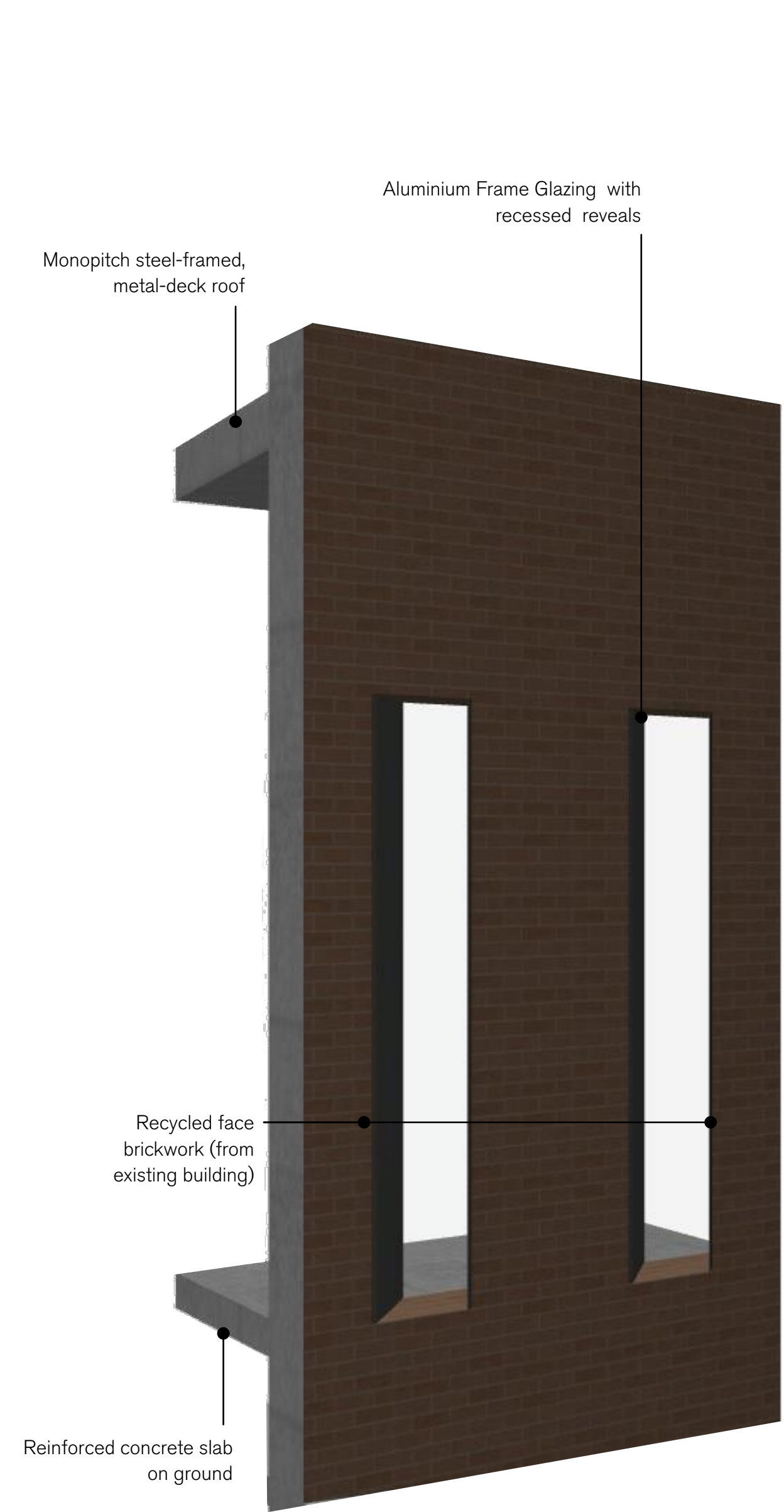


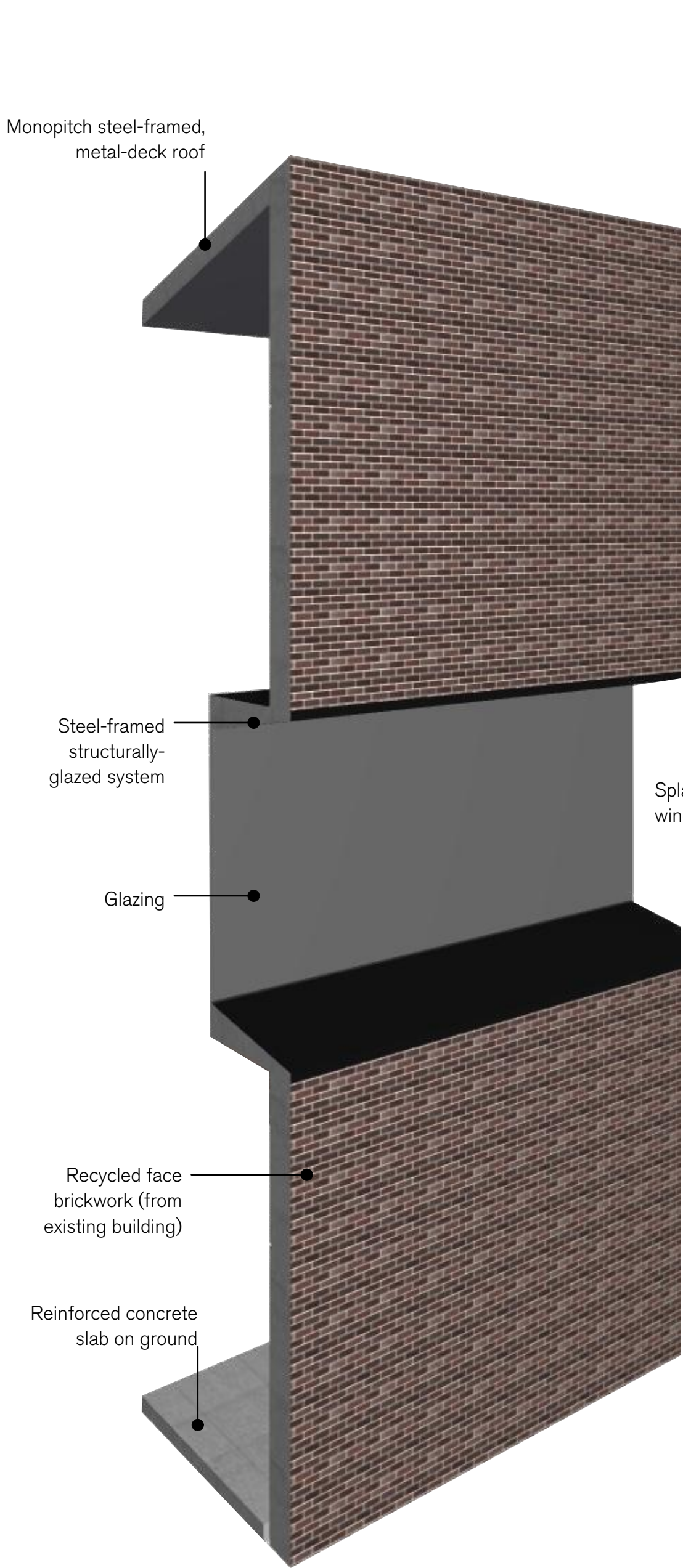
Western Facade - FT01, 07, 09, 10



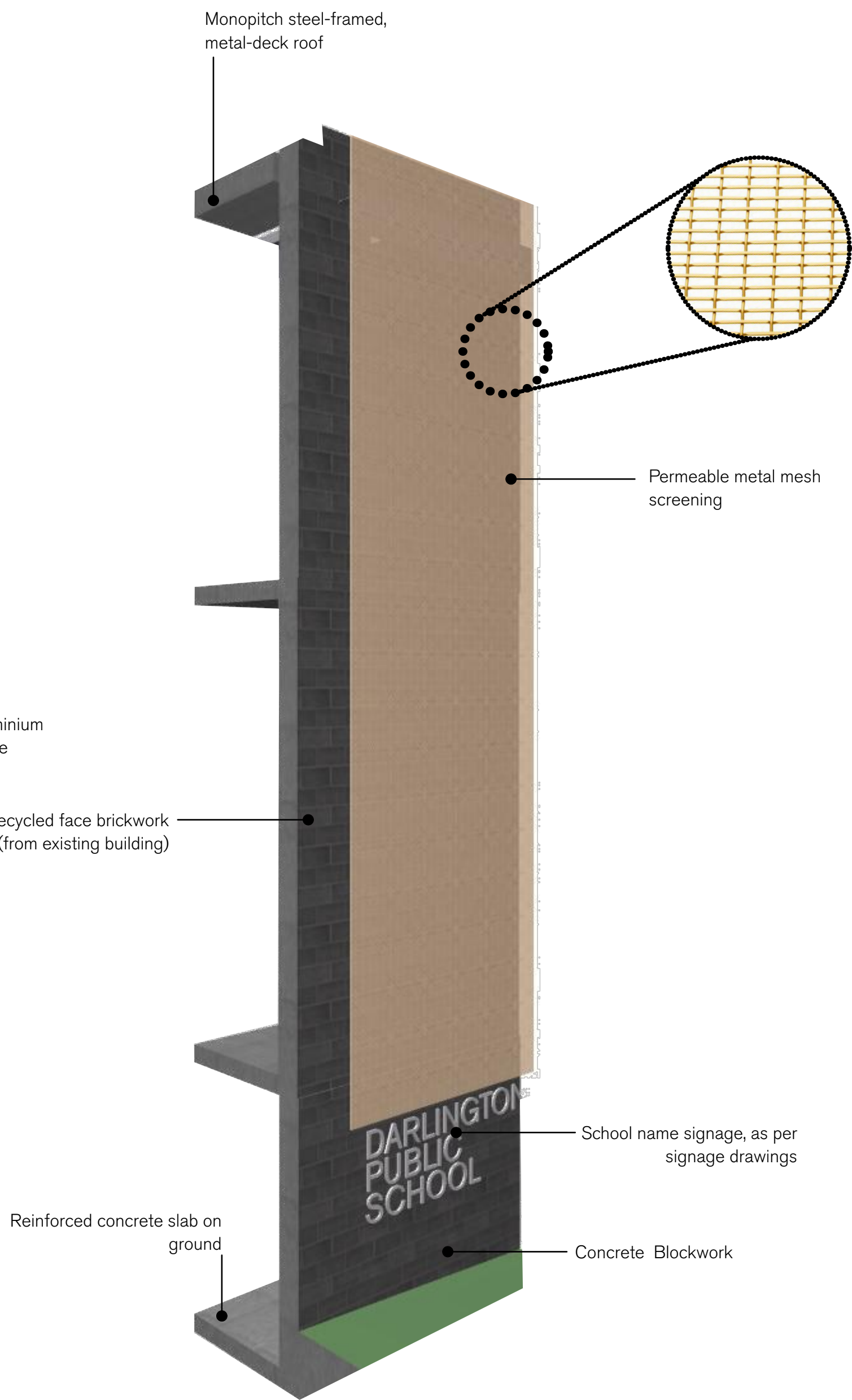
1 ELEVATION Abercrombie St Elevation 1:200
NTS



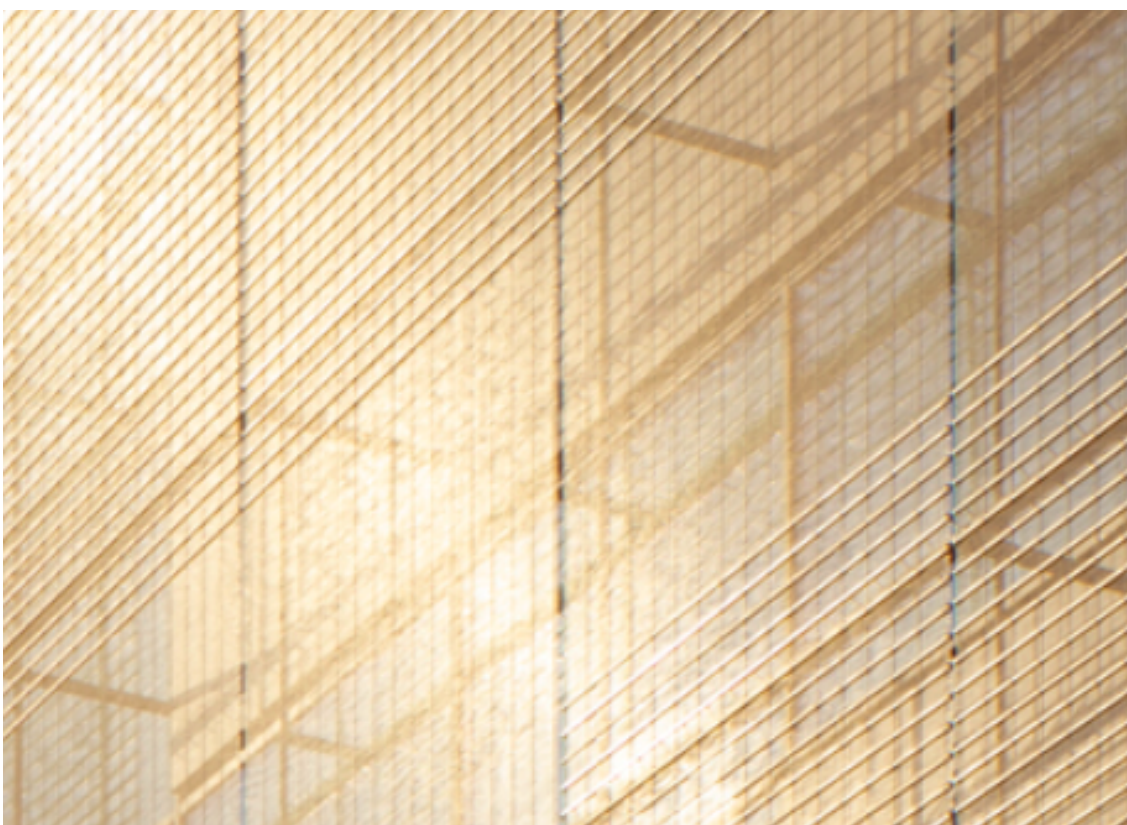
13 Perspective Cutaway FT10
NTS



12 Perspective Cutaway FT01, FT09
NTS



14 Perspective Cutaway FT07
NTS



GENERAL NOTES

- ALL DIMENSIONS AND EXISTING CONDITIONS SHALL BE CHECKED AND VERIFIED BY THE CONTRACTOR BEFORE PROCEEDING WITH THE WORK.
- ALL LEVELS RELATIVE TO 'AUSTRALIAN HEIGHT DATUM'.
- DO NOT SCALE DRAWINGS.
- USE FIGURED DIMENSIONS ONLY.

Legend

- FT01 New dark-coloured face-brick with recessed aluminium glazing
- FT02 New light coloured face-brick
- FT03 Perforated Brickwork to match adjacent brick type
- FT04 New face-brick to match FT02 with aluminium framed recessed glazing
- FT05 metal mesh / perforated facade
- FT06 New dark coloured face brick with aluminium framed glazing system
- FT07 Metal mesh with blockwork wall behind
- FT08 Aluminium framed glazing system with prefinished FC cladding
- FT09 Aluminium framed glazing in recessed FT01 brickwork
- FT10 New light coloured face brick with recessed aluminium framed windows

02	28/4/20	SSDA Submission	CD
01	17/4/20	SSDA Submission	CD
rev	date	name	by

fjmt studio architecture interiors landscape urban community
sydney melbourne uk
Level 5, 70 King Street E +61 2 9251 7077 • fjmtstudio.com



project
Darlington Public School
Golden Grove Street
Darlington NSW 2008

title
**Perspective Sections - Facade
Western Facade - FT01, 07, 09, 10**

scale	1:200 @ A1	first issued	17/4/20
project code	sheet no.	revision	
DTPS	4301		02