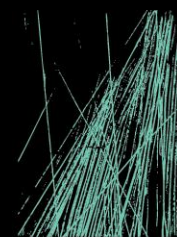


SSDA REPORT

ROSEVILLE ANGLICAN COLLEGE

SWELL CENTRE

HYDRAULIC SERVICES



JHA

JHASERVICES.COM

This report is prepared for the nominated recipient only and relates to the specific scope of work and agreement between JHA and the client (the recipient). It is not to be used or relied upon by any third party for any purpose.

DOCUMENT CONTROL SHEET

Project Number	190081
Project Name	Roseville Anglican College SWELL Centre
Description	Hydraulics Services SSDA Report
Key Contact	George Koutoulas

Prepared By

Company	JHA Consulting Engineers (NSW) Pty Ltd
Address	Level 23, 101 Miller Street, North Sydney NSW 2060
Phone	61-2-9437 1000
Email	@jhaengineers.com.au
Website	www.jhaservices.com
Author	George Koutoulas
Checked	Alex Bartley
Authorised	George Koutoulas

Revision History

Issued To	Revision and Date							
EMP Projects	REV	A						
Jordan Graham	DATE	03/10/2019						
	REV							
	DATE							
	REV							
	DATE							

CONTENTS

1	INTRODUCTION	4
1.1	OVERVIEW	4
2	HYDRAULIC SERVICES	5
2.1	EXISTING SEWER INFRASTRUCTURE	5
2.2	POTABLE COLD WATER SERVICE	7

1 INTRODUCTION

1.1 OVERVIEW

This Hydraulics Services report has been prepared by JHA Consulting Engineers on behalf of the Roseville Anglican College (the Applicant).

The Hydraulics Services report accompanies an Environmental Impact Statement (EIS) in support of State Significant Development Application for the Roseville Anglican College SWELL Centre

The purpose of this Hydraulics Services report is to demonstrate compliance with the SEARs. This report shall be read in conjunction with the Architectural design drawings and other consultant design reports submitted as part of the application.

The objectives of this Hydraulics Services assessment are:

- Establish the availability of authority sewer and water services detailing information on the existing capacity and any augmentation requirements.

2 HYDRAULIC SERVICES

The hydraulic services infrastructure will be incorporated into the design and construction phases of the development as follows:

2.1 EXISTING SEWER INFRASTRUCTURE

Sydney Water records indicate the site discharges to the 225mm Sydney Water sewer in Recreation Avenue.

The 225mm Sydney Water sewer in Recreation Avenue has sufficient capacity to serve the development.

The diagrams below indicate the location of the Sydney Water sewer mains.

The new development will drain to the existing sewer at the south eastern end of the access point from Recreation Avenue.

A sewer pump out pit will be provided to collect the drainage from the Level 1 areas which are below the gravity connection point and discharge to the existing sewer drain.

Disconnection of the existing sewer drain from number 37 Bancroft Avenue will be required as part of the scope of works.



Figure 1 – Sydney Water - Sewer Mains

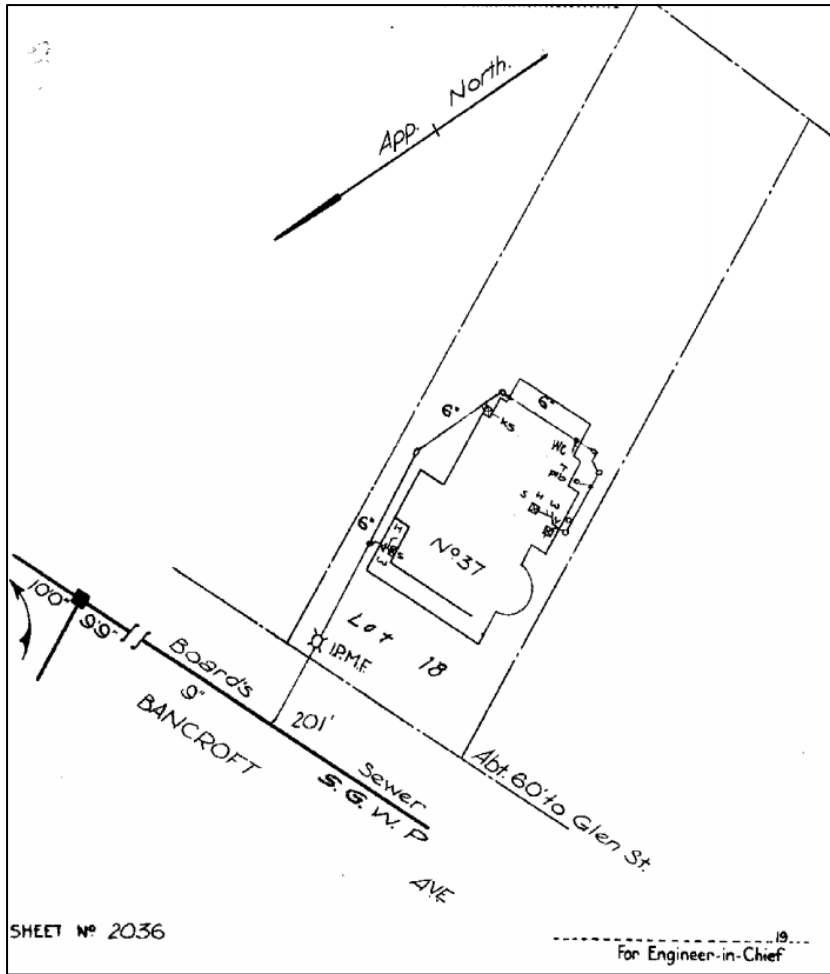


Figure 3 – 37 Bancroft Ave Sewer Drainage Diagram- Sewer will need to be disconnected from the Sydney Water sewer.

2.2 POTABLE COLD WATER SERVICE

The College has Sydney Water water mains available in Victoria Street, Recreation Avenue and Bancroft Avenue as indicated on the Sydney Water information below.



Figure 4 – Sydney Water - Water Mains

There is a water meter located on the Recreation Avenue frontage in the north west corner connected to the 100mm main in Recreation Avenue.

We propose to use the existing connection point to provide water services to the new facility.

The Sydney Water 100mm main in Recreation Avenue has sufficient capacity to serve the development

WATER SAVINGS

The use of rainwater reuse systems and water efficiency appliances and fittings will reduce water consumption and subsequently reduce demand on potable water supplies and reduce the water costs for new building and site irrigation water usage.

WATER SAVING FIXTURES AND FITTINGS

Water efficiency labelling and standards (WELS) scheme will be adopted.

Water approved WaterMark scheme fittings and tapware will be adopted.