

APPENDIX D PROPOSAL MAPS AND DRAWINGS

D.1 DESIGN DRAWINGS

D.1.1 General Layout

D.1.2 Control Building

D.1.3 Inverter Modules

D.1.4 Single Access Tracker

D.1.5 Switchroom

D.1.6 TransGrid Substation

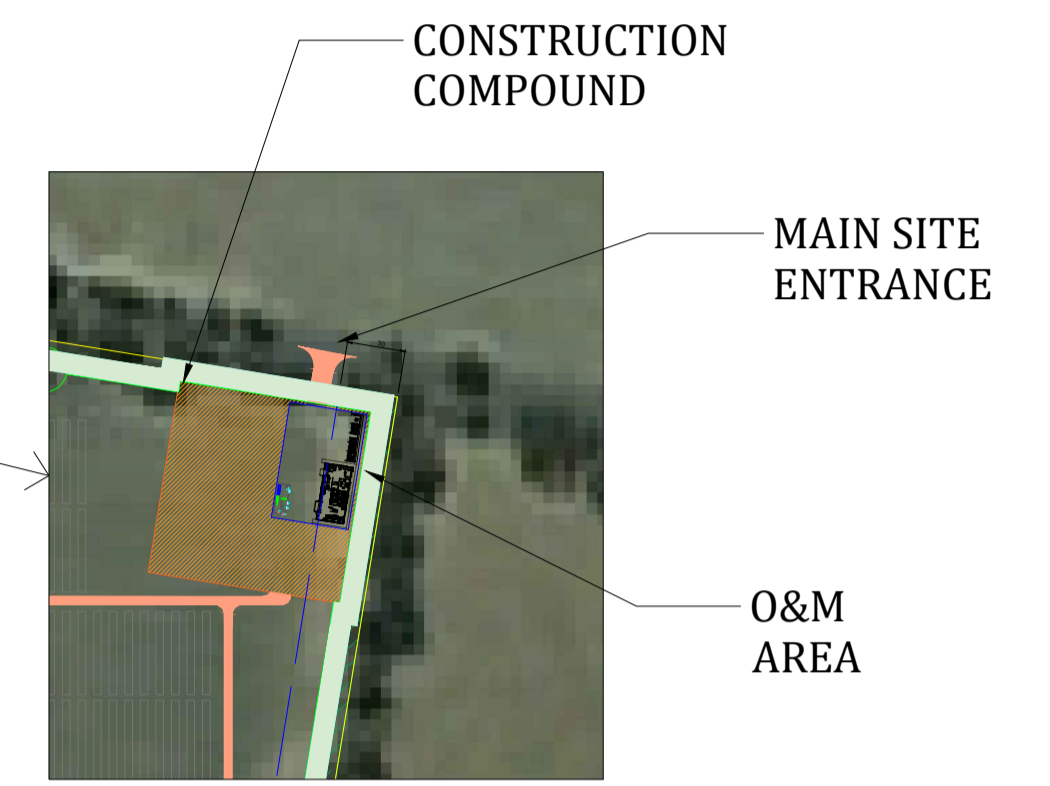
D.1.7 Security Fence

D.1.8 Road Section



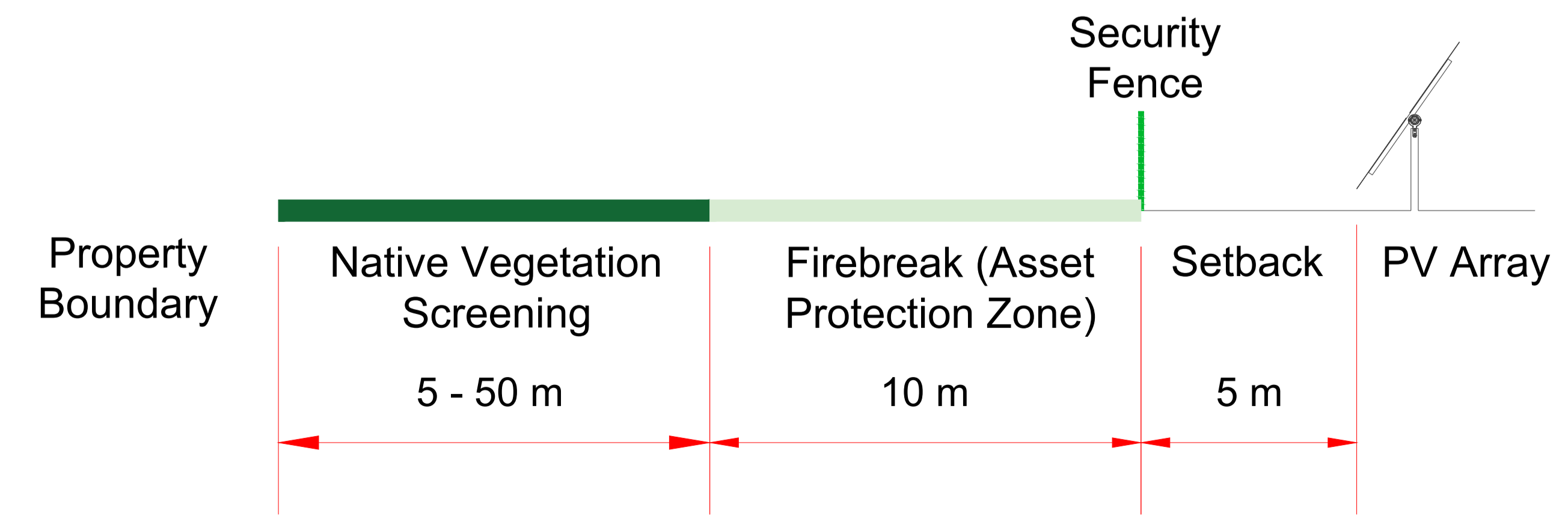
PLANT SUMMARY "WALLA WALLA"		
Total Inverter Power of Plant @50°C:	363.69 MVA	
Total DC Peak Power (STC):	335 MWp	
Area:	Fenced area	Fence length
	546.6 Ha	14,885 m

GEOGRAPHICAL COORDINATES	
Country	Australia
Coordinates (UTM 55S)	495125.83 m E, 6045054.97 m N
Altitude	224 m



LEGEND	
1.	Southern Vegetation Buffer - 50 m width
2.	Eastern Vegetaytion Buffer - 5 m width
3.	Construction Compound, O&M Area & Main Site Entrance
4.	Water Pipeline - 10 m easement
5.	Northern Vegetation Buffer - 50 m width
6.	Gas Pipeline - 24 m easement
7.	Transgrid Access
8.	Transgrid Substation
9.	Northwest Vegetation Buffer I - 50 m width
10.	Overhead 330kV Transmission Line - 60 m easement
11.	Northwest Vegetation Buffer II - 10 m width
12.	Access / Crossing - Schneiders' Road - North
13.	Access / Crossing - Schneiders' Road - South
14.	Creek Crossing Point - 35°44'52"S - 146°58'32"E
15.	Inverter Exclusion Zone - 400 m radius
16.	Northwest Vegetation Buffer III - 5 m width
17.	Creek Cable Crossing
18.	Distance to the Eastern Boundary - 30 m

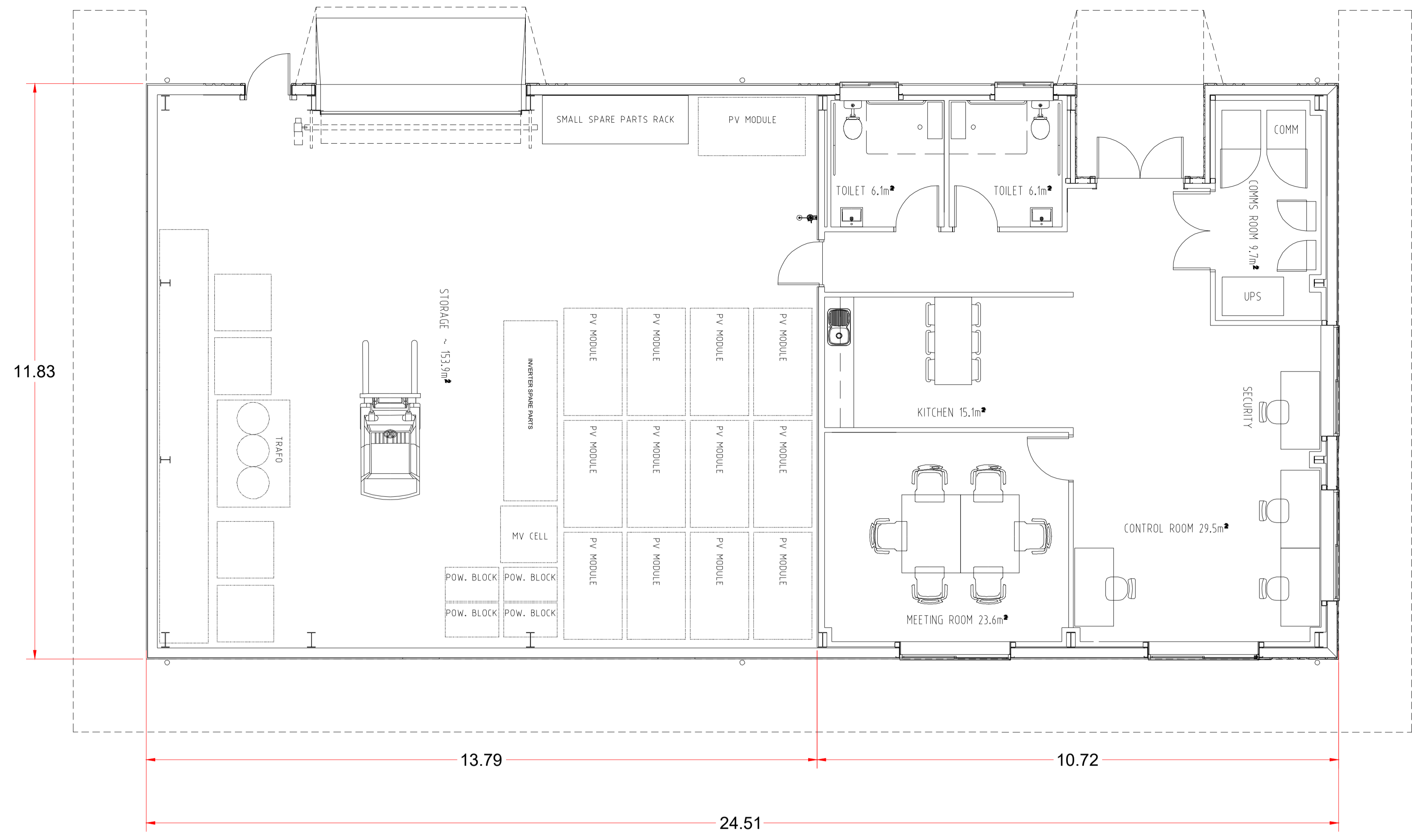
LEGEND	
	Fence
	Asset Protection Zone
	Vegetation Screening
	Development Exclusion Areas
	Legal Boundary
	Retained Dam
	Roads
	Fire Access Gate



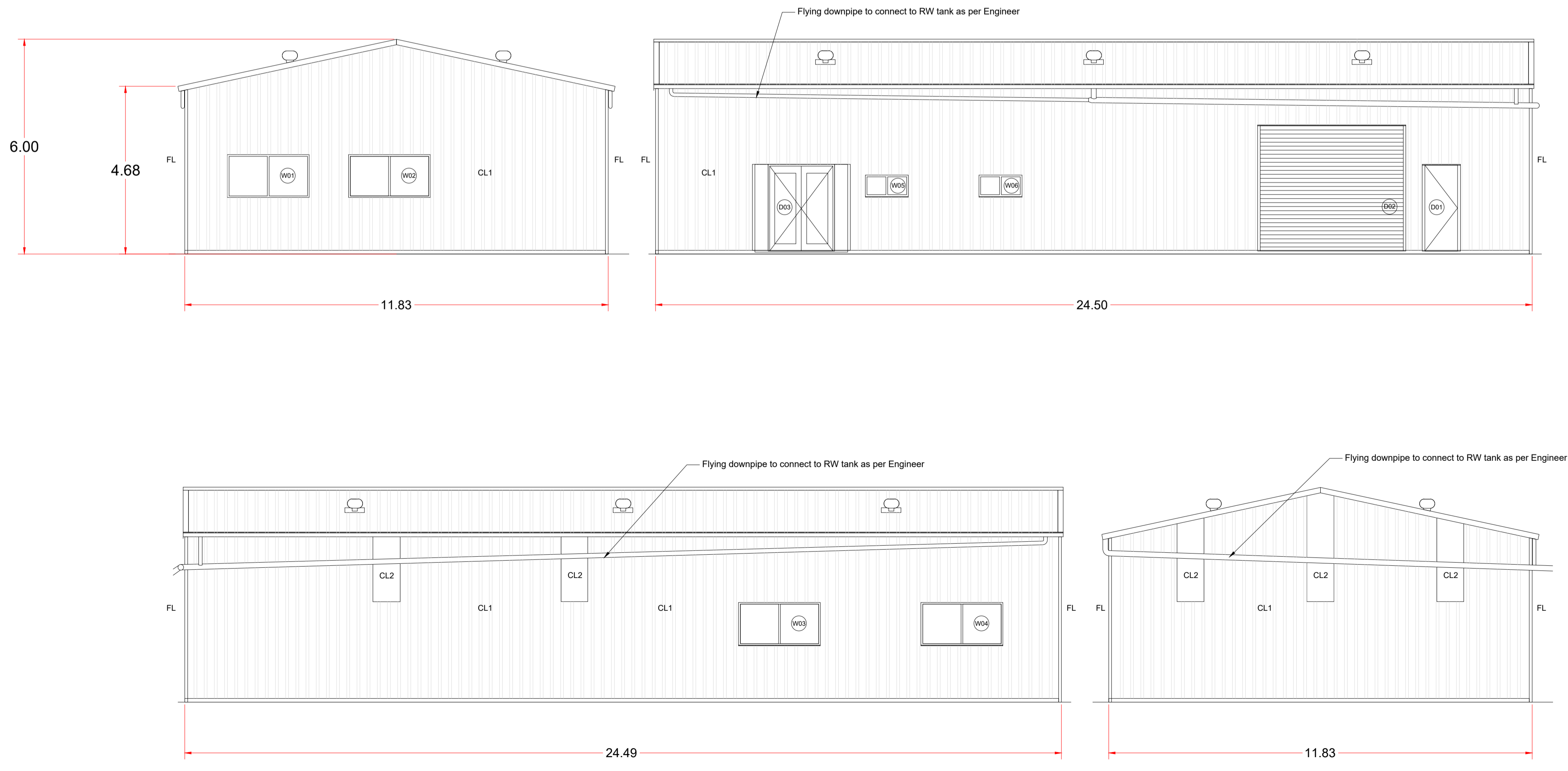
Indicative Drawing - Not to Scale

COMMENTS / APPROVED										A1
00	190822	J.L.M.	J.L.M.	J.L.M.	A.R.S.					
REV.	DATE	DRAWN	DESIGNED	CHECKED	APPROVED	DESCRIPTION				VERIFIED
PROJECT						WALLA WALLA PV PLANT				
TITLE										REF. N°:
GENERAL LAYOUT										SCALE
										1:12500
										N°
										0
										Rev.
										SHEET 01
										FOLLOWS -

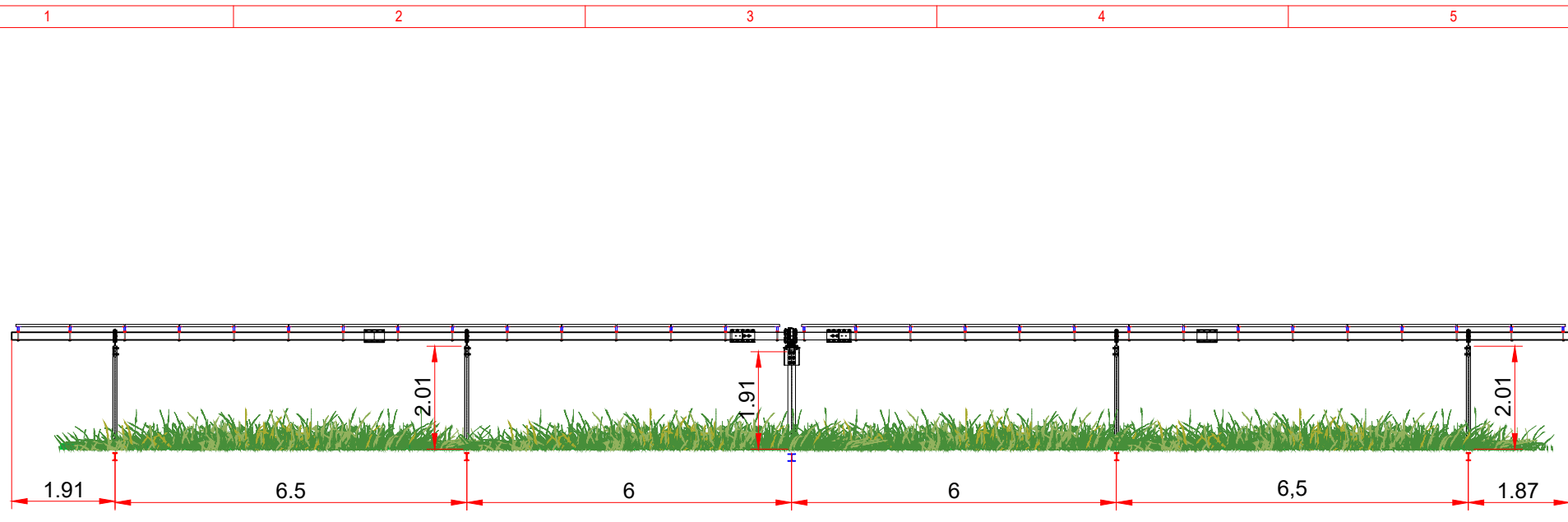




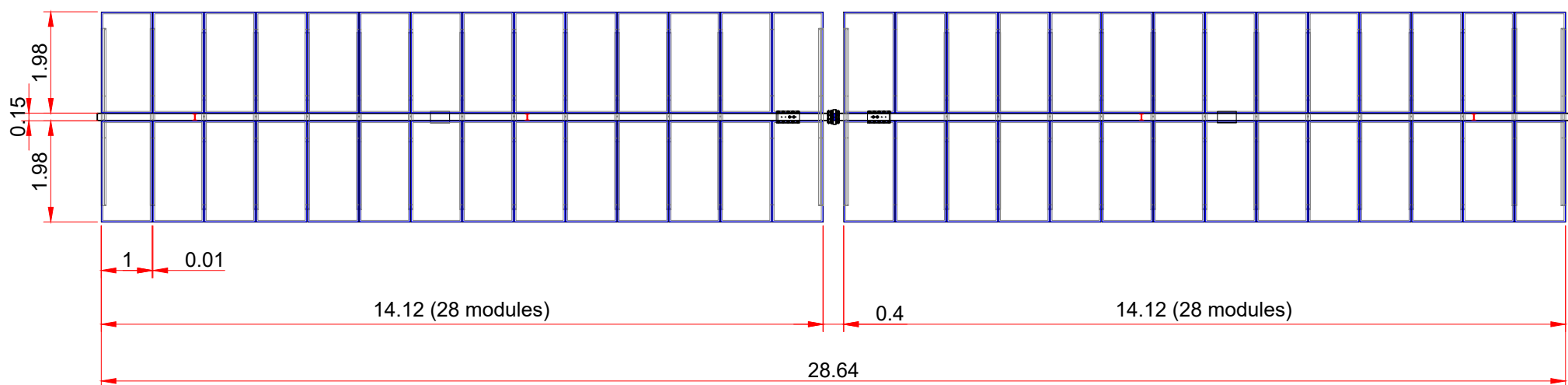
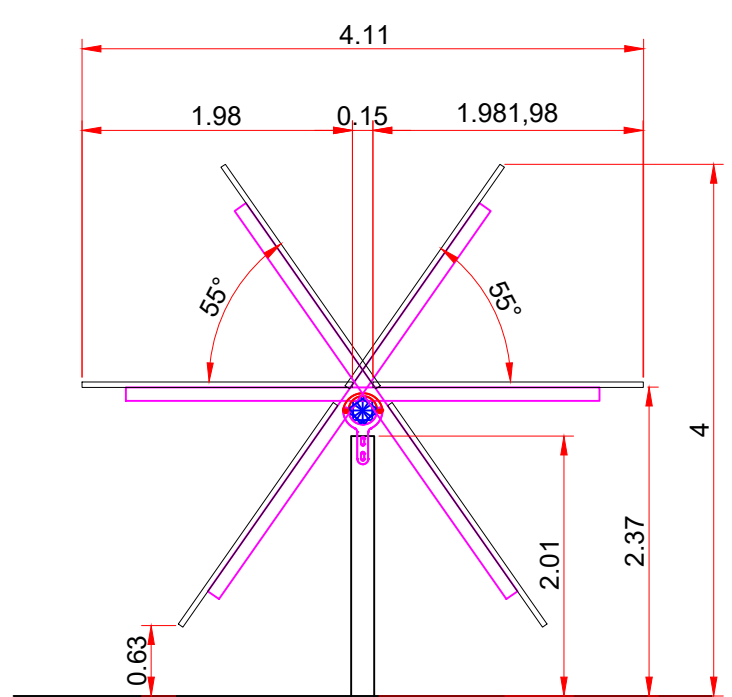
Development Area



COMMENTS / APPROVED										A1
00	190822	J.L.M.	J.L.M.	J.L.M.	A.R.S.					
REV.	DATE	DRAWN	DESIGNED	CHECKED	APPROVED	DESCRIPTION				VERIFIED
						PROJECT				
						WALLA WALLA PV PLANT				
						CONTROL BUILDING AND WAREHOUSE				
TITLE										REF. N°
										SCALE
										N°
										0
										Rev.
										SHEET 07
										FOLLOWS -



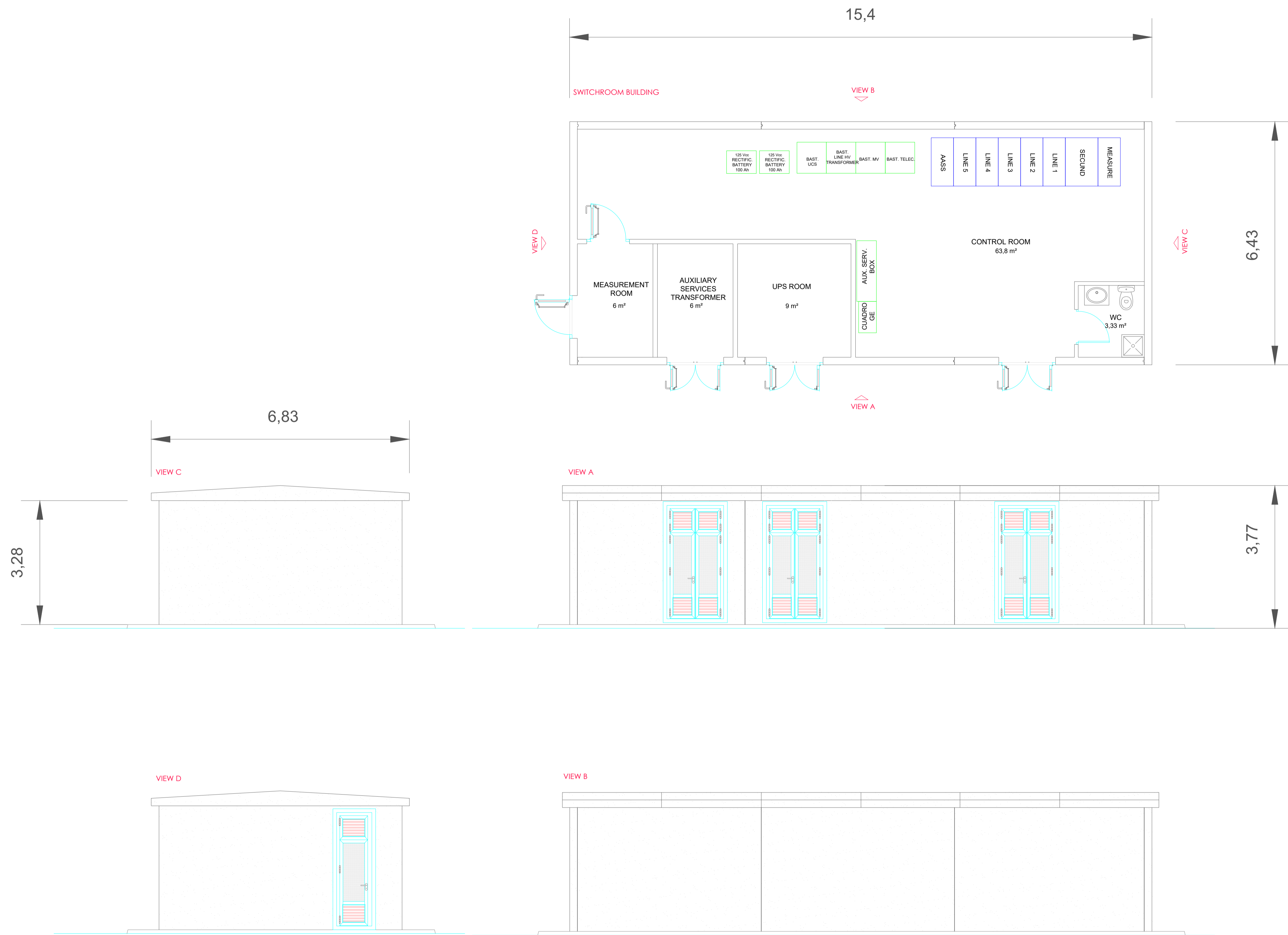
TRACKER ELEVATION



TRACKER PLAN

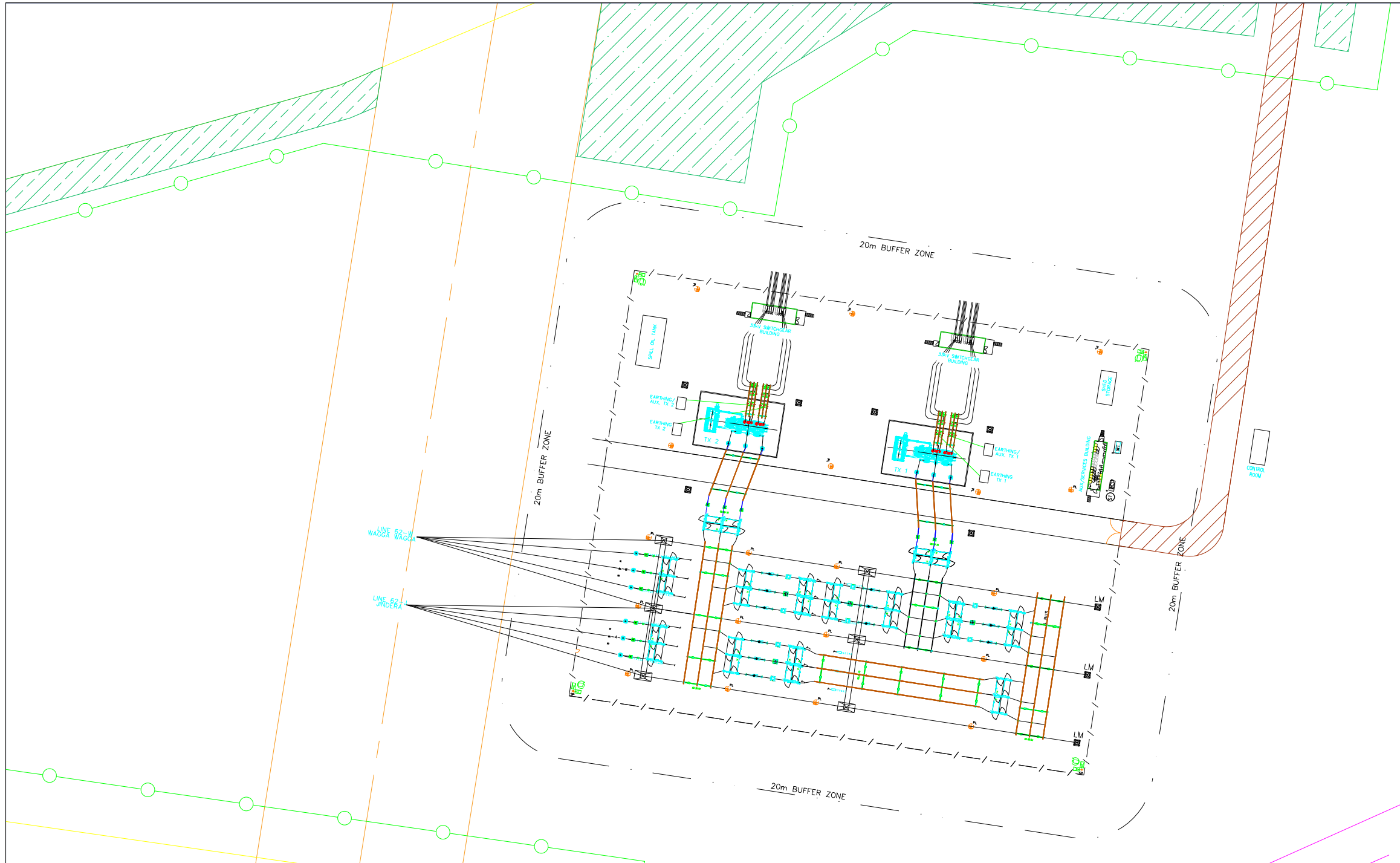
Units mm

						PROJECT WALLA WALLA PV PLANT 300 MWac		FRV RIZONWATIO RENEWABLE VENTURES	
						TITLE		REF. N°: -	
						A3 SINGLE AXIS TRACKER DETAIL		N°: -	
								0 Rev.	
01	190822	T.S.	T.S.	A.R.	A.R.	DESCRIPTION		SHEET 09 FOLLOW	
REV.	DATE	DRAWN	DESIGNED	CHECKED	APPROVED	VERIF.			



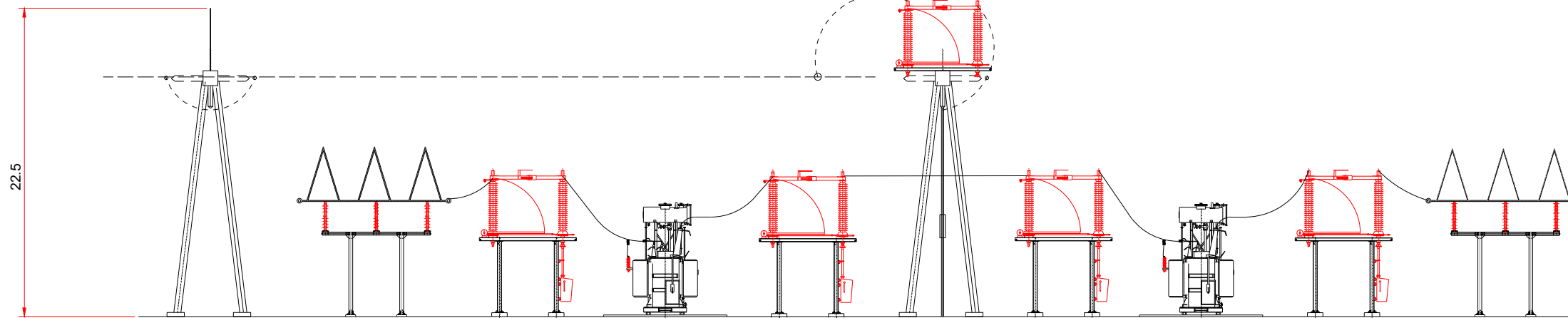
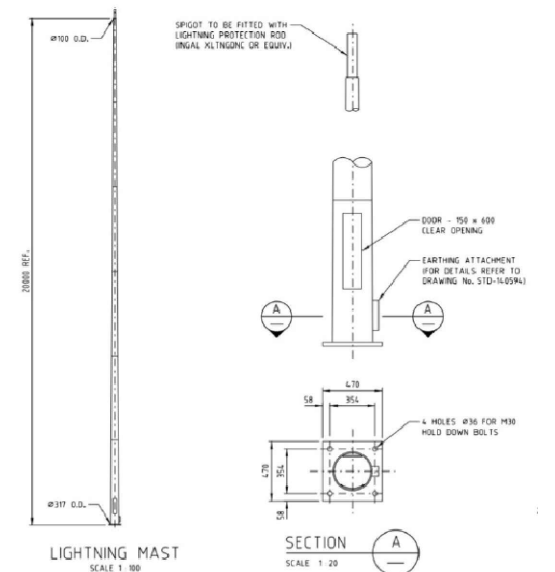
COMMENTS / APPROVED										A1
00	190822	J.L.M.	J.L.M.	J.L.M.	A.R.S.					
REV.	DATE	DRAWN	DESIGNED	CHECKED	APPROVED	PROJECT				VERIFIED
						WALLA WALLA PV PLANT				
TITLE										REF. N°:
SWITCHROOM										SCALE
										N/A
										N°
										0
										Rev.
SHEET 12										FOLLOWS -





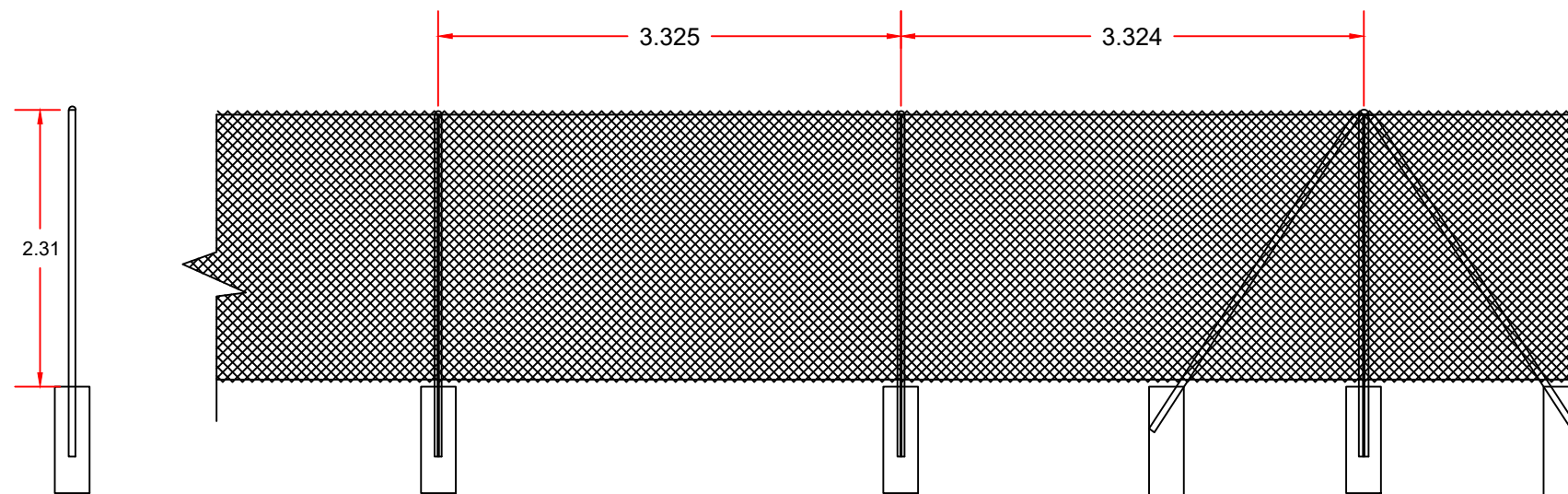
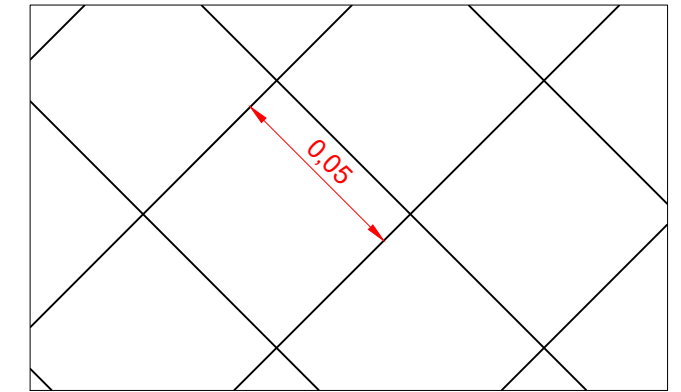
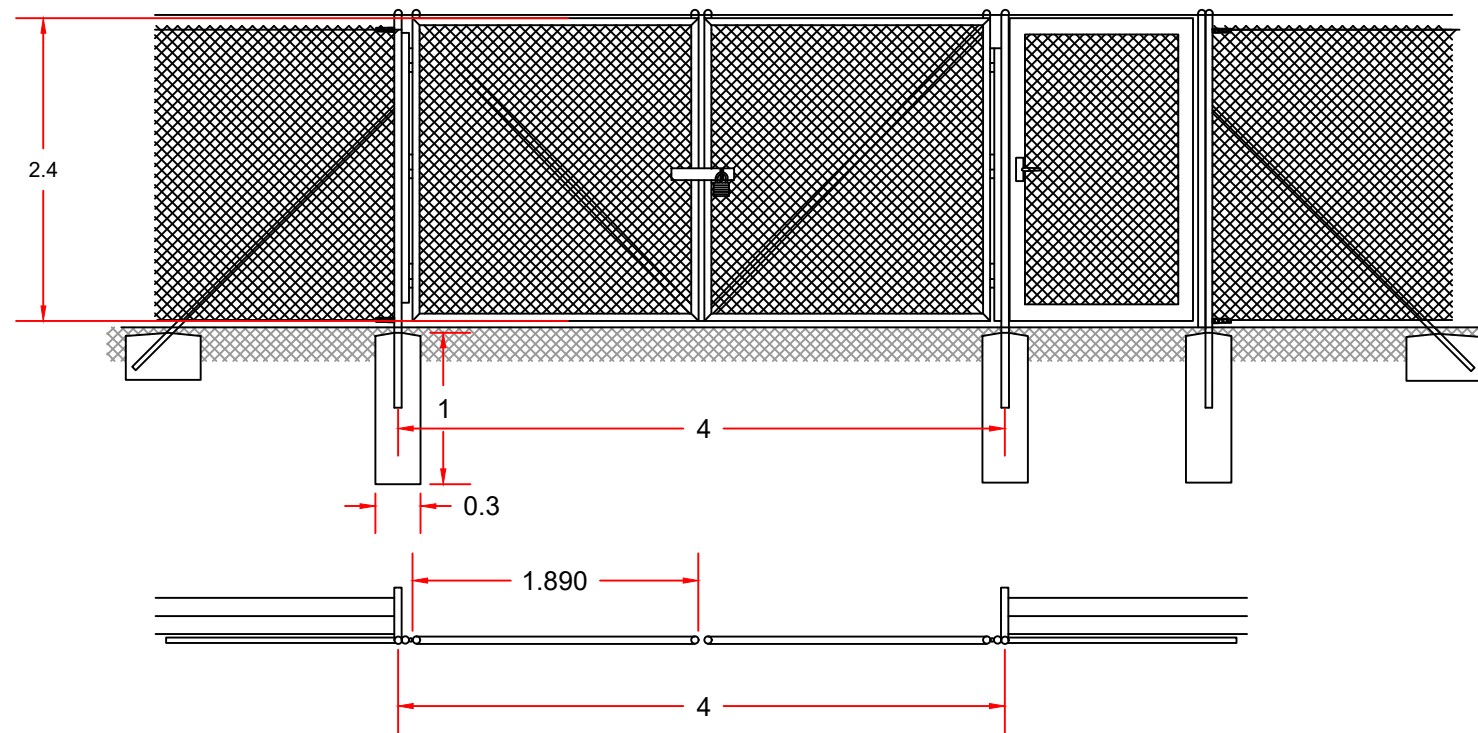
- Lightning: 20 m + 2.5 m lightning rod
- 330 kV Line Gantry: 21 m to 25 m + 2.5 m lightning rod
- Auxiliary Services Building: 5.5 m + 2.5 m lightning rod
- 33 kV Switchroom: 5.5 m + 2.5 m lightning rod

Typical Lighting Mast



COMMENTS / APPROVED										A1
00	190822	J.L.M.	J.L.M.	S.L.S	A.R.S.					
REV.	DATE	DRAWN	DESIGNED	CHECKED	APPROVED	DESCRIPTION				VERIFIED
						PROJECT				
						WALLA WALLA PV PLANT				
						TITLE				
						HV SUBSTATION DETAIL				
										REF. N°
										SCALE
										N°
										0
										Rev.
										SHEET 04 FOLLOWS -





Indicative Fence Flood Gate

- Notes
- Maximum fence mesh height: 2.4m
 - Fence mesh is uncoated galvanized chain wire.

Units m

						PROJECT		WALLA WALLA PV PLANT 300 MWac		FRV <small>PROGETTIAMO SOSTENIBILMENTE VERIFICIAMO</small>	
						TITLE		A3		REF. N°: -	
						FENCING DETAILS		N.°: -		0 Rev.	
						SHEET 05		FOLLOW			
01	190822	T.S.	T.S.	A.R.	A.R.	DESCRIPTION		VERIF.			
REV.	DATE	DRAWN	DESIGNED	CHECKED	APPROVED						

