

Sydney Football Stadium Event Management - Plan

Submitted to the Department of Planning and Environment under
Condition D28, August 2024, Version 11

Contents

1.0	Introduction.....	6
1.1	Sydney Football Stadium Redevelopment.....	6
1.2	SSD 9835 Assessment.....	8
1.3	Condition D28 Event Management Plan	8
1.4	Purpose and Objectives of this Event Management Plan.....	9
1.5	Event Management Plan Approval Requirements.....	10
1.6	Land to Which this Event Management Plan Applies	10
1.7	Event Management Plan Structure	12
2.0	Developing the Event Management Plan	13
2.1	Stakeholder Consultation	13
2.2	Continuing engagement and opportunities to participate	14
2.3	Data Sources	14
2.4	Reference Documents.....	14
2.5	Scope and Methodology	15
3.0	Event Typologies	19
3.1	Event Capacity and Scenarios.....	19
3.2	Event Frequencies	19
3.3	Organised Activities within the Stadium and Public Domain.....	19
3.4	Hours of Operation.....	20
4.0	Community Notification Procedures	25
4.1	Sporting Events.....	25
4.2	Concert Events.....	25
5.0	Precinct Arrival and SFS Entry.....	27
5.1	Public Transport.....	27
5.2	Light Rail	28
5.3	Train	28
5.4	Sydney Bus Services and Special Event Shuttle Services.....	28
5.5	Kiss and Ride, Taxi, Rideshare and Coach Services.....	29
5.6	Pedestrian Arrival.....	29
5.7	Pedestrian Departures	30
5.8	Cycling Arrivals and Departures	31
5.9	Pedestrian Safety Measures	31
5.10	Event Day Patron Parking	32
5.11	Event Day Sporting Partner and Operational Parking	32
5.12	Satellite Parking	32
6.0	Event Day Experience (Public Domain, Seating and Field of Play)	33
6.1	External Concourse Activation Zones	33

6.2	Internal Concourse Activation Zones	35
6.3	Tiering and Stadium Capacity	36
6.4	Field of Play	36
6.5	Pyrotechnics	37
6.6	Merchandise.....	38
7.0	Event Day Management and Venue Configuration	39
7.1	Event Manager	39
7.2	Other Staff	39
7.3	Event Operations Centre	39
7.4	Active Fan Zones	40
7.5	CAPO	40
7.6	TIFO.....	40
7.7	Ticket Box Offices	41
7.8	Team Facilities and Amenities	41
7.9	Tunnel Club.....	42
7.10	Sporting Partner Storage	42
7.11	Substitutes Benches	43
7.12	Coaches Box.....	43
7.13	Hirers Office	44
8.0	Medical Facilities.....	45
8.1	Patron Medical Room.....	45
8.2	Ambulance	45
8.3	Automatic External Defibrillators.....	45
8.4	Player Medical Room	45
8.5	Medicab.....	46
9.0	Patron Facilities.....	47
9.1	Parenting Rooms	47
9.2	Changing Place.....	47
9.3	Prayer Room.....	47
10.0	Grounds.....	48
10.1	Flags and Banners	48
10.2	Sprinkler System	48
10.3	Field of Play Signage.....	48
10.4	Booking Process	48
11.0	Security	49
11.1	Security	49
11.2	Security Check Points.....	49
11.3	Terms and Conditions of Entry	49

11.4	CCTV	49
11.5	Hostile Vehicle Mitigation Plan	49
11.6	Crime Prevention Through Environmental Design Review	50
12.0	Emergency Response, Evacuation and Crowd Control.....	51
12.1	Emergency Responses.....	51
12.2	Crowd Control	51
12.3	Anti-Social Behaviour	53
12.4	Stop Play Procedures	54
12.5	Waste Management	54
12.6	Complaints Management	55
13.0	Delivering the Event Management Plan.....	56
13.1	Implementation Action Plan	56
13.2	Performance Monitoring.....	56

Document Control		
Date	Position	Version
15 December 2021	Progressive drafts prepared by Savills Project Management Pty Ltd (consultant to Venues NSW)	Versions 1 & 2
	Reviewed by Venues NSW	
25 February 2022	Feedback incorporated by Savills Project Management Pty Ltd (consultant to Venues NSW)	Version 3
	Reviewed by Venues NSW	
28 February 2022	Feedback incorporated by Savills Project Management Pty Ltd (consultant to Venues NSW)	Version 4
	Reviewed by Venues NSW	
01 March 2022	Issued to Community Consultative Committee (CCC), relevant NSW Government agencies and sporting partners for review and comment	Version 5
31 May 2022	Updated to respond to consultation feedback and submitted to the Department of Planning and Environment under Condition D28	Version 6
29 June 2022	Revised to incorporate comments from the Department of Planning and Environment and re-submitted for final endorsement	Version 7
7 July 2022	Revised to incorporate second round of comments from the Department of Planning and Environment and re-submitted for final endorsement	Version 8
22 August 2022	Updated to reflect approved Operational Noise Management Plan mitigation measures	Version 9
15 December 2023	Updated as part of the annual review	Version 10
August 2024	Updated in line with Mod 8	Version 11

List of Acronyms	
AS	Australian Standards
CCC	Community Consultative Committee
DA	Development Application
DPE	Department of Environment and Planning
LGA	Local Government Area
NRL	National Rugby League
NSW	New South Wales
SCSGT	Sydney Cricket and Sports Ground Trust
SSD	State Significant Development
SFS	Sydney Football Stadium
TfNSW	Transport for New South Wales
UTS	University of Technology Sydney
VNSW	Venues New South Wales

1.0 Introduction

This Event Management Plan has been prepared to support the operations of the Sydney Football Stadium (SFS). The Event Management Plan has been developed to meet the statutory requirements of State Significant Development (SSD) 9835 relating to the Sydney Football Stadium Redevelopment.

1.1 Sydney Football Stadium Redevelopment

On 6 December 2018, the then Minister for Planning approved Stage 1 of Sydney Football Stadium (SFS) comprising a concept approval and concurrent early works package (SSD 9249) to facilitate redevelopment of the Sydney Football Stadium. The concept approval established the maximum building envelope, design, and operational parameters for a new stadium with up to 45,000 seats for patrons and allowing for 55,000 patrons in concert mode. The concurrent Stage 1 works, which were completed on 28 February 2020, facilitated the demolition of the former SFS and associated buildings.

Stage 2 of the Sydney Football Stadium (SFS) Redevelopment (SSD 9835) was approved by the Minister for Planning and Public Spaces on 6 December 2019. Stage 2 provides for:

- construction of the stadium, including:
 - 45,000 seats (additional 10,000 - person capacity in the playing field in concert mode) in four tiers including general admission areas, members seating and corporate / premium seating;
 - roof cover over all permanent seats and a rectangular playing pitch;
 - a mezzanine level with staff and operational areas;
 - internal pedestrian circulation zones, media facilities and other administration areas on the seating levels;
 - a basement level (at the level of the playing pitch) accommodating pedestrian and vehicular circulation zones, 50 car parking spaces, facilities for teams and officials, media, and broadcasting areas, storage, and internal loading areas;
 - food and drink kiosks, corporate and media facilities; and
 - four signage zones.
- construction and establishment of the public domain within the site, including:
 - hard and soft landscaping works;
 - publicly accessible event and operational areas;
 - public art; and
 - provision of pedestrian and cycling facilities.
- wayfinding signage and lighting design within the site;
- From 6 June 2024, Moore Park Carpark 1 (MP1) will be closed for redevelopment. Upon completion of construction works, a car park of up to 1,500 car parking spaces will be available and vehicular connection to the Allianz stadium basement level;
- operation and use of the new stadium and the public domain areas within the site for a range of sporting and entertainment events; and
- extension and augmentation of utilities and infrastructure.

To date, SSD 9835 has been modified on eight previous occasions as summarised in Table 1.

Table 1 Modifications to SSD 9835

Modification	Approved	Description
Modification 1	3 April 2020	Amend Conditions B14 and B15 to enable the condition to be satisfied in accordance with the principles and framework prescribed by the <i>Contaminated Land Management Act 1997</i> .
Modification 2	14 December 2020	Reinstate fitness facilities that were previously available within the former SFS.
Modification 3	7 December 2020	Alter the approved mezzanine slabs at the eastern and western stands and relocate the approved administration facilities. design amendments to the north western glazed façade. Inclusion of an additional stadium signage condition.
Modification 4	22 April 2021	Relocate the photovoltaic (PV) cells from the stadium's roof to Level 5 (above the eastern and western plant rooms) and a reduction in the amount of kilowatts peak (kWp) generated.
Modification 5	8 June 2021	Minor modification to correct plan revisions and dates.
Modification 6	29 September 2021	Fit-out, use and operation of the eastern mezzanine of the stadium for the purpose of a dedicated training and administration facility for the Sydney Roosters NRL football club, known as the Sydney Roosters Centre of Excellence.
Modification 7	18 July 2022	Design, construction and operation of the Precinct Village and Car Park development to include: <ul style="list-style-type: none"> – up to a maximum of 1,500 space multi-level car park below the proposed ground level reconfiguration of the currently approved drop off requirements for the elderly and mobility impaired – free flow level pedestrian access to and from the SFS concourse from Driver Ave and Moore Park Road – electric car charging provision – a versatile and community public domain, comprising: <ul style="list-style-type: none"> – provision for 4 x north-south orientated tennis courts on non-event days with the potential to become an event platform on event days; – children's playground; – 1,500m cafe / retail / restaurants with associated amenities in a single storey pavilion (6 metre) low level; – customer service office and ticket window; and – vertical transport provisions – utilities provision augmentation.

Modification	Approved	Description
Modification 8	15 December 2023	<p>Modifications to the concert operational parameters:</p> <ul style="list-style-type: none"> - Including increasing concert cap from six per year to 20 per year - Increase concert length from five hours to 10 hours (twice a year), - Alterations to rehearsal and sound test finish times from 7pm to 10pm and a curfew exemption for the Mardi Gras after-party.

1.2 SSD 9835 Assessment

An Event Management Strategy (Sydney Cricket and Sports Ground Trust, June 2019) formed part of the Environmental Impact Statement prepared for SSD 9835.

The Event Management Strategy set out the operational management procedures and practices involved in the operation of the SFS, including:

- event-day management responsibilities and complaint-handling procedures;
- management of pedestrian and crowd arrivals for a range of operating scenarios;
- stadium egress for a range of operating scenarios;
- vehicular access and rejection from the MP1 carpark and stadium basement;
- hostile vehicle management and security management;
- noise management; and
- emergency response and evacuation protocols.

The exhibited (and subsequently approved) Event Management Strategy committed to the preparation of an Event Management Plan, which was formalised through Condition D28 of SSD 9835. This Event Management Plan therefore builds upon the accepted and approved principles of the exhibited Event Management Strategy and reflects applicable conditions of consent and relevant operational management plans required by SSD 9835.

1.3 Condition D28 Event Management Plan

Pursuant to Condition D28 (reproduced below), an Event Management Plan is required to be prepared.

*D28. At least 3 months prior to commencement of operation of the stadium, and again within six months of the approval of SSD-9835-Mod-8, the Applicant must submit a final and updated **Event Management Plan** for the new stadium, to the satisfaction of the Planning Secretary. The plan must include:*

- (a) *evidence of consultation with Council, CCC, Customer Journey Planning and Transport Management Centre within TfNSW, SCSGT, Greater Sydney Parklands Trust, NSW Police, Fire and Rescue NSW and other emergency services and relevant major event stakeholders including (but not limited to) the sporting clubs.*
- (b) *updated management measures (where applicable) within the:*
 - (i) *ETTMP as required by condition D16;*
 - (ii) *the recommendations of the Stage 2 Environmental Assessment CPTED Review prepared by Intelligent Risks dated 29 August 2019 and when applicable the Precinct Village and Car Park (MOD 7) Security through environmental design statement prepared by Intelligent Risks Pty Ltd dates 6*

- September 2021 (as updated by this consent), as updated by condition B55 and B55A;
- (iii) the management principles in the updated Anti-Social Behaviour Strategy prepared by Ethos Urban dated 28/05/2019 as updated by condition B55;
 - (iv) operational waste management measures outlined in condition D41;
 - (v) final ONMP as required by condition D48;
- (c) public transport, traffic and crowd management and pedestrian safety measures (as required by the GTP in condition D14 and D14A), and access for emergency vehicles;
- (d) management of the duration and finishing times for concert event rehearsals and sounds tests/checks, including procedures for considering exceptional circumstances as allowed by condition A19; procedures that have applied to a standard rehearsal process would also apply in exceptional rehearsal circumstances.
- (e) management of community uses, including procedures for notifying community events that are likely to cause concern due to noise, congestion or other issues;
- (f) a precinct wide operational waste management plan to include mechanisms for reduced littering in the areas surrounding the stadium (outside the site boundary); and
- (g) evidence, such as a signed letter by NSW Police Force Terrorism Protection Unit, which demonstrates that a Security Management Plan has been prepared by the Applicant and the plan includes the:
- (i) the Hostile Vehicle Mitigation Plan required by condition B54;
 - (ii) the recommendations of the Stage 2 Environmental Assessment CPTED Review prepared by Intelligent Risks dated 29 August 2019 and when applicable the Precinct Village and Car Park (MOD-7) Security through environmental design statement prepared by Intelligent Risks Pty Ltd dated 6 September 2021 (as updated by this consent) as updated by condition B55 and B55A;
 - (iii) the management principles in the updated Anti-Social Behaviour Strategy prepared by Ethos Urban dated 28/05/2019 as updated by condition B55; and
 - (iv) the management principles of the Emergency Management Plan as updated by condition D26.

Note: A copy of the Security Management Plan is not required to be submitted.

1.4 Purpose and Objectives of this Event Management Plan

This Event Management Plan has been prepared to respond to the requirements of Condition D28. The purpose of this Event Management Plan is to provide the essential information required to deliver a successful event at the SFS.

The objectives of this Event Management Plan are to:

- outline the event typologies and activation activities expected to be facilitated; and
- address the following operational aspects for proposed events:
 - patron arrival and departure
 - vehicle access
 - security
 - noise management
 - emergency response and evacuation
 - other operational details specific to a particular event

- reference the other operational management plans as they relate to event operations.

1.5 Event Management Plan Approval Requirements

As required under Condition D28, the Event Management Plan must be approved by the Planning Secretary, at least three (3) months prior to the operation of the new stadium.

1.6 Land to Which this Event Management Plan Applies

This Event Management Plan applies to the SFS Site, which is located at 40-44 Driver Avenue, Moore Park within the City of Sydney Local Government Area (LGA) and is legally described as Lot 10 and part Lot 11 in DP 1255013.

The Site is located on the eastern edge of the city, approximately 3km from the Sydney CBD, and forms part of a larger entertainment and recreation precinct shared with Centennial and Moore Parks, Disney Studios, and the Entertainment Quarter. It is in the northern corner of the precinct and is bounded by Moore Park Road to the north, Paddington Lane to the east, the existing Sydney Cricket Ground stadium to the south and Driver Avenue to the west. The site is located immediately to the south of the suburb of Paddington, with the suburbs of Centennial Park to the east and Surry Hills to the west.

The Site is connected to Sydney's transport network through existing bus routes and benefits from a dedicated stop on the Sydney CBD and South East Light Rail.

Recognising that the SFS Site is located within the broader Moore Park sports and entertainment precinct, this Event Management Plan considers the measures required to be put in place when multiple events are held throughout the precinct. This includes double header events at the SFS and Sydney Cricket Ground and concerts or other events at the Hordern Pavilion and/or within the Entertainment Quarter, Centennial Parklands and Royal Randwick Racecourse – refer to Section 3.0 for more details.

The Moore Park Event Operations Group (MEOG) develops operational plans to ensure the delivery of safe and successful events in the Moore Park sporting and entertainment Precinct and provides a forum for member agencies to work with event organisers on the effective traffic and parking operations in the precinct and its surrounds. MEOG is chaired and coordinated by Transport for NSW (TNSW). MEOG member agencies include Greater Sydney Parklands, Transport for NSW, NSW Police, Venues NSW, the City of Sydney, the NSW Taxi Council, the Entertainment Quarter and Playbill Venues. The MEOG framework ensures that the multiple events occurring throughout the precinct are coordinated across all relevant stakeholders.



Figure 1 SFS Regional Site Context Plan



Figure 2 SFS Site Area and Local Plan

1.7 Event Management Plan Structure

This Event Management Plan is structured as follows:

- Part 1.0 - Introduction
- Part 2.0 - Developing the Event Management Plan
- Part 3.0 - Event Typologies
- Part 4.0 - Community Notification Procedures
- Part 5.0 - Precinct Arrival and SFS Entry
- Part 6.0 - Event Day Experience (Public Domain, Seating and Field of Play)
- Part 7.0 - Event Day Management and Venue Configuration
- Part 8.0 - Medical Facilities
- Part 9.0 - Patron Facilities
- Part 10.0 - Grounds
- Part 11.0 - Security
- Part 12.0 - Emergency Response, Evacuation and Crowd Control
- Part 13.0 - Delivering the Event Management Plan

2.0 Developing the Event Management Plan

2.1 Stakeholder Consultation

The Event Management Plan has been developed over a period of more than 12 months and is the culmination of an extensive process of technical studies and investigations, and stakeholder consultation.

The views and responses of organisations and community members were received through a variety of channels at critical stages in the development of the Event Management Plan. Consultation with the community began in 2017 with the public exhibition of the Stage 1 Concept Application (SSD 9249) and subsequent public exhibition of the Stage 2 SSD (SSD 9835). Over the course of 2021 & 2022, Venues NSW and its consultant team engaged with organisations and community members via a series of meetings, workshops, and other engagement activities. The feedback received during these activities was used to inform the development of the Event Management Plan. The Allianz Stadium Community Consultative Committee has added event traffic management as a standing agenda item, and will invite relevant stakeholders such as NSW Police, Transport for NSW, and the Point-to-Point Transport Commissioner to meetings as required.

The stakeholder consultation requirements prescribed by Condition D28 in relation to this Event Management Plan, including their roles and responsibilities, is detailed in Table 2. Evidence of consultation outcomes is provided in Appendix A.

Table 2 Summary of stakeholder consultation process

Stakeholder	Description			
	Preparation	Consultation	Endorsement	Information*
Venues NSW	✓			
Greater Sydney Parklands		✓		
Transport for NSW		✓		
NSW Police		✓		
Fire and Rescue NSW		✓		
Other emergency services - Ambulance		✓		
Department of Planning and Environment			✓	
City of Sydney Council		✓		
SFS Community Consultative Committee		✓		
Relevant major stakeholders		✓		

Stakeholder	Description			
	Preparation	Consultation	Endorsement	Information*
including but not limited to sports clubs				
University of Technology, Sydney		✓		
Disney Studios		✓		
Kirra Child Care Centre		✓		
Adjoining landowners/occupiers		✓		

* Note: Several conditions under SSD 9835 require provision of approved management plans to authorities. No such requirement exists under Condition D28 relating to the Event Management Plan; however, a copy of the Event Management Plan will be provided to the Certifying Authority as part of the Occupation Certificate process.

2.2 Continuing engagement and opportunities to participate

This Event Management Plan is proposed to be a live document that evolves and will be tailored slightly to every event as no two events are the same. Accordingly, the engagement process has been, and will continue to be, a core part of the Event Management Plan's implementation. All stakeholders will be kept informed of the progress of the Event Management Plan and there will be opportunities to participate in future stages of planning and to comment on aspects of implementation, as appropriate.

MEOG provides the forum for relevant stakeholders including Venues NSW, Greater Sydney Parklands, Playbill, and others to understand the varying requirements of respective events and determine any necessary measures that may need to be implemented, Venues NSW is committed to continuing engagement and coordination through MEOG with precinct stakeholders. Through the MEOG forum, the commitments throughout this Event Management Plan can be considered and appropriate enhancements made that reflect relevant contemporary arrangements and the strategies implemented by Venues NSW in the context of initiatives also proposed by other precinct stakeholders.

2.3 Data Sources

The Event Management Plan has been informed by the operational requirements and experience of Venues NSW as well as a range of data sources and technical investigations collected over the 30 previous years of the former SFS's operation, which opened in 1988 and closed in 2018. Venues NSW and its predecessor the Sydney Cricket and Sports Ground (SCSG) Trust also has over 100 years of experience running events at the SCG, and accordingly has unrivalled experience in coordinating and managing events in the Precinct. The analysis has been used to guide and inform the development of the Event Management Plan, but also importantly to act as a benchmark to monitor its success of the plan moving forwards.

2.4 Reference Documents

Concurrent with the development of this Event Management Plan, a few other operational management plans are required to be developed to support the SFS.

These operational management plans have been prepared to satisfy the relevant conditions of consent of SSD 9835.

The management principles and recommendations of these documents have informed this Event Management Plan and are referenced throughout. While this Event Management Plan is a stand-alone document that is not reliant on any other operational management plan, it should be read in conjunction with the following key documents:

- Hostile Vehicle Mitigation Plan (Intelligent Risks, July 2020) required by Condition B54 of SSD 9835;
- Updated Stage 2 Environmental Assessment CPTED Review (Intelligent Risks, July 2020) required under Condition B55 of SSD 9835
- Updated Anti-Social Behaviour Strategy (Ethos Urban, August 2020) required under Condition B55 of SSD 9835;
- Event Traffic and Transport Management Plan (Venues NSW, May 2024) as required by Condition D16 of SSD 9835;
- Operational Waste Management Plan (TTM on behalf of Venues NSW, May 2022) and measures outlined in Condition D41; and
- Operational Noise Management Plan (Venues NSW, April 2024) required by Condition D48 of SSD 9835.

2.5 Scope and Methodology

The scope of the Event Management Plan was determined by the Department of Planning, and Environment (DPE) in imposing Condition D28. This Event Management Plan has been prepared to directly respond to the requirements of Condition D28. Consultation and engagement with Venues NSW operational staff and the stakeholders identified in Condition D28 has also informed this Event Management Plan.

Table 3 identifies the requirements of Condition D28 and where each individual matter has been addressed.

Table 3 Condition D28

Modification	Description
a) evidence of consultation with Council, CCC, Sydney Coordination Office and Transport Management Centre within TfNSW, SCSGT, Centennial Park and Moore Park Trust, NSW Police, Fire and Rescue NSW and other emergency services and relevant major event stakeholders including (but not limited to) the sporting clubs.	Section 2.1 - Stakeholder consultation, Section 2.2 - Ongoing opportunities for consultation and Appendices and B
b) updated management measures (where applicable) within the: <ul style="list-style-type: none"> (i) ETTMP as required by condition D16; (ii) the recommendations of the Stage 2 Environmental Assessment CPTED Review prepared by Intelligent Risks dated 29 August 2019 (as updated by this consent), as updated by condition B55; 	Refer to following sections for <i>ETTMP</i> management measures: <ul style="list-style-type: none"> • Section 5.1 - Public Transport • Section 5.2 - Light Rail • Section 5.3 - Train • Section 5.4 - Sydney Bus Services / Special Event Shuttle Services • Section 5.5 - Kiss and Ride, Taxi, Rideshare and Coach Services

Modification	Description
<p>(iii) the management principles in the updated Anti-Social Behaviour Strategy prepared by Ethos Urban dated 28/05/2019 as updated by condition B55;</p> <p>(iv) operational waste management measures outlined in condition D41;</p> <p>(v) final ONMP as required by condition D48;</p>	<ul style="list-style-type: none"> • Section 5.6 - Pedestrian Arrival • Section 5.7 - Pedestrian Departures • Section 5.8 - Cycling Arrivals and Departures • Section 5.9 - Pedestrian Safety Measures • Section 5.10 - Event Day Patron Parking • Section 5.11 - Event Day Sporting Partner and Operational Parking • Section 5.12 - Satellite Parking <p>Refer to following sections for <i>CPTED</i> management measures:</p> <ul style="list-style-type: none"> • Section 11.6 - Crime Prevention Through Environmental Design Review <p>Refer to following sections for Anti-Social Behaviour Strategy management measures:</p> <ul style="list-style-type: none"> • Section 12.3 - Anti-Social Behaviour Strategy <p>Refer to following sections for waste management measures:</p> <ul style="list-style-type: none"> • Section 12.5 - Waste management <p>Refer to following sections for ONMP management measures:</p> <ul style="list-style-type: none"> • Section 3.3 - Organised Activities within the Stadium and Public Domain • Section 3.4 - Hours of Operation
<p>c) public transport, traffic and crowd management and pedestrian safety measures, and access for emergency vehicles;</p>	<p>Refer to following sections for <i>public transport</i> and <i>pedestrian safety</i>:</p> <ul style="list-style-type: none"> • Section 5.1 - Public Transport • Section 5.2 - Light Rail • Section 5.3 - Train • Section 5.4 - Sydney Bus Services / Special Event Shuttle Services • Section 5.5 - Kiss and Ride, Taxi, Rideshare and Coach Services • Section 5.6 - Pedestrian Arrival • Section 5.7 - Pedestrian Departures • Section 5.8 - Cycling Arrivals and Departures • Section 5.9 - Pedestrian Safety Measures • Section 5.10 - Event Day Patron Parking • Section 5.11 - Event Day Sporting Partner and Operational Parking • Section 5.12 - Satellite Parking

Modification	Description
	<p>Refer to following sections for <i>crowd management</i>:</p> <ul style="list-style-type: none"> • Section 7.4 - Active Fan Zones • Section 11.1 - Security • Section 11.2 - Security Check Points • Section 11.3 - Terms and Conditions of Entry • Section 11.4 - CCTV • Section 12.2 - Crowd Control • Section 12.3 - Anti-Social Behaviour • Section 12.4 - Stop Play Procedures <p>Refer to following sections for <i>emergency vehicles access</i>:</p> <ul style="list-style-type: none"> • Section 12.1 - Emergency Responses • Section 8.1 - Patron Medical Room • Section 8.2 - Ambulance • Section 8.3 - Automatic External Defibrillators • Section 8.4 - Player Medical Room • Section 8.5 - Medicab
d) management of community uses, including procedures for notifying community events that are likely to cause concern due to noise, congestion, or other issues;	<ul style="list-style-type: none"> • Section 3.4 - Hours of Operation (which dictate when community uses can occur) • Section 4.1 - Sporting Events • Section 4.2 - Concert Events
e) a precinct wide operational waste management plan to include mechanisms for reduced littering in the areas surrounding the stadium (outside the site boundary); and	<ul style="list-style-type: none"> • Section 12.5 - Waste management

Modification	Description
<p>f) evidence, such as a signed letter by NSW Police Force Terrorism Protection Unit, which demonstrates that a Security Management Plan has been prepared by the Applicant and the plan includes the:</p> <ul style="list-style-type: none"> (i) the Hostile Vehicle Mitigation Plan required by condition B54; (ii) the recommendations of the Stage 2 Environmental Assessment CPTED Review prepared by Intelligent Risks dated 29 August 2019 (as updated by this consent as updated by condition B55; (iii) the management principles in the updated Anti-Social Behaviour Strategy prepared by Ethos Urban dated 28/05/2019 as updated by condition B55; and (iv) the management principles of the Emergency Management Plan as updated by condition D26. <p><i>Note: A copy of the Security Management Plan is not required to be submitted.</i></p>	<p>The Security Management Plan comprising all elements specified in Condition D28(f) was issued to the NSW Police Terrorism Unit in April 2022. To date, no written response has been received in response to the Security Management Plan specifically.</p> <p>Notwithstanding this, Venues NSW will continue to engage with the NSW Police Terrorism Unit. This Event Management Plan will also be issued to the NSW Police Terrorism Unit once the Emergency Management Plan has been approved by the DPE.</p>

3.0 Event Typologies

3.1 Event Capacity and Scenarios

As home to NSW's premier sporting teams (Sydney Roosters, Sydney FC, and the NSW Waratahs), the SFS is a multi-purpose venue that can host a variety of sporting fixtures. The SFS can host a capacity crowd of 42,500 spectators seated across four seating levels including general admission areas, members seating and corporate/premium seating.

In concert mode, an additional 10,000-15,000 people can be accommodated on the playing field, pending overlay & stage configuration

During a major double header event, the maximum attendance in the Moore Park precinct would be in the order of 86,000 people across the SFS, Precinct Village, SFS concourse public domain areas and the SCG.

Table 4 summarises the typical number of patrons at various event types.

Table 4 SFS Event Types and Scenarios

Event Type	Typical Number of Patrons
Typical SFS event	20,000
SFS peak event	40,000
Concert event	45,000
Typical double header	55,000
Peak double header	80,000

3.2 Event Frequencies

Allianz Stadium will be permitted to host up to 20 concerts a year, including the Mardi Gras after-party should it be relocated in future years.

Two concerts per year can be 10-hour festivals, and artists will be afforded additional time for sound checks.

There is no annual or average limitation on sporting events or other types of activities prescribed by SSD 9835.

3.3 Organised Activities within the Stadium and Public Domain

The SSD approval allows for the operation and use of the new stadium and the public domain areas within the site for a range of sporting and entertainment events. Under Conditions A17 and A18, the approval permits the use of the public domain areas outside the stadium footprint for use by public for:

- gathering spaces;
- organised temporary activities on event days;
- amenities;
- circulation purposes; and
- active and passive outdoor recreational activities.

The Event Management Plan is required to provide details of the approved uses. Tables 5 and 6 summarise the activities and events proposed to be undertaken within the public domain areas.

Condition A20 of SSD 9835 provides that all organised activities within the stadium and / or the public domain areas within the SFS Site, that could be potentially audible at nearby residential receptors, must be completed by 11:30pm unless otherwise specified in the approved Operational Noise Management Plan as updated from time to time. The Operational Noise Management Plan (Arup, May 2022) has confirmed that organised activities within the stadium and / or the public domain areas within the SFS Site can operate until 11:30pm.

3.4 Hours of Operation

Condition A19 of SSD 9835 prescribes the hours of operation for events and rehearsals at the SFS.

Condition A20 of SSD 9835 provides that all organised activities within the stadium and/or the public domain areas within the SFS Site, that could be potentially audible at nearby residential receptors, must be complete by 11:30pm unless otherwise specified in the approved Operational Noise Management Plan (Arup, May 2022) as updated from time to time (V15 updated, April 2024).

Throughout the Trial Period, event noise limits for noise sensitive receivers, as well as monitoring procedures shall be in line with the EPA Prevention Notice, presented in Table 5 below **Error! Reference source not found.**

Table 5 Event noise limits

Receivers	Amplified sounds limit ¹ , Leq(5min)	
	dB(A)	1/1 octave, 63Hz dB(Z)
Concert Events and Rehearsals / Sound Checks	70	90
Sporting event	60	-
1. Applies at property boundary of all residences, 1.5m above occupied floors.		

These noise limits apply to wind speeds up to 18 m/s, above which wind generated noise on the microphone limits measurement accuracy. During periods of wind greater than 18 m/s, Venues NSW will continue to take all reasonable and feasible actions to minimise noise, which will include:

- adjusting the in-house sound system to limit the noise to settings established during the trial period; and
- maintaining Permanent Noise Monitoring System (PNMS) noise limits for Concert Events for intermittent periods where wind of less than 18m/s are recorder.

Condition A18 provides the public domain areas within the site on event days must be in accordance with the Event Management Plan approved as part of this development consent (and as updated from time to time).

The Operational Noise Management Plan required under Condition D48 (Arup, May 2022) has been prepared to align with Conditions A18 – A20 and reiterates the time limits of sporting, concert and other events as set out in Table 6.

The Operational Noise Management Plan also details the events and activities envisaged for the public domain. Table 7 below outlines the uses of the public domain and time of use on event and non-event days.

The Operational Noise Management Plan also prescribes a suite of noise control measures to ensure operations remain within the approved noise limits and noise impacts are mitigated. These include (as an example):

- undertaking bump in and bump out activities within the SFS basement wherever possible
- traffic control around the stadium perimeter (limiting associated idling/horn noise);
- minimising set-up and pack-down duration by scheduling contractors and activities; and
- contractor management for the minimisation of set-up and pack-down noise emissions.

Table 6 outlines the proposed hours of operation for the revised number and frequency of events.

Table 6 SFS Hours of Operation (Conditions A19 and A20)

Descriptor	Time limits	Maximum length of event	Duration
	Not to commence before	Not to finish after	
Sporting events	8:00 AM	11:00 PM	-
Concert Events - Performance	10:00 AM	11:00 PM	Maximum 5 hours duration
Concert Events - Rehearsals and sound tests	10:00 AM	10:00 PM	Kept to absolute minimum
Other outdoor events with sound amplification - days preceding working days	10:00 AM	8:00 PM	-
Other outdoor event with sound amplification - days not preceding working days	10:00 AM	10:30 PM	-
Mardi-Gras after-party	Commencing after the official Mardi-Gras parade	7am the following Day	
Organised temporary activities on event days in public domain areas at the site	8:00 AM	11:00 PM	-

Descriptor	Time limits	Maximum length of event	Duration
	Not to commence before	Not to finish after	
All organised activities within the stadium and / or the public domain areas within the site, that could be potentially audible at nearby residential receptors.	8:00 AM	11:30 PM	
Grounds and other maintenance work on the playing field and internal stadium	Mondays to Fridays 7:00 AM - 6:00 PM Saturdays and Sundays 8:00 AM - 4:00 PM		All works undertaken outside of these hours would be subject to the non-event operational noise limits
The operation of the Stadium Members Facilities	Mondays to Fridays 5:30 AM to 11:30 PM Saturdays 6:00 AM and 11:30 PM Sundays 7:00 AM and 11:00 PM		

Table 7 Public Domain Activities and Events (Condition A18)

Uses	Event Days			Non-Event Days		
	Activity	Location	Time of Activity	Activity	Location	Time of Activity
Gathering spaces	Live site for sold out sporting events to encourage general public to enjoy the atmosphere involving moveable big screens	Precinct Village lawn	12pm - 11pm	Informal gatherings/picnics by families and small groups	Precinct Village lawn	8am - 11pm
	Merchandise vans and marquees selling event and team merchandise	Stadium concourse Precinct Village lawn	12pm - 11pm	Garden style chairs and umbrellas	Precinct Village lawn Tennis courts	8am - 11pm
Organised temporary activities/events	Pop up bars/tents/marquees	Tennis courts	12pm - 11pm	Markets and stalls (e.g.: farmers market, book fair, etc)	Precinct Village lawn	From 8am
	Mobile vans, ball kicking/hitting zone	Precinct Village lawn	12pm - 11pm	-	-	-
	Marquees including stand up cash bar, cocktail style functions, or more formal sit-down style functions involving internal AV and big screens	Tennis courts	12pm - 11pm	-	-	-
	Accreditation/Media/Volunteer Centre and Ticket Collection facilities	Tennis courts	8am - 11pm	-	-	-
	Music performances and artists	Precinct Village lawn	12pm - 11pm	-	-	-
Amenities and circulation purposes	Cloaking area for concert and event patrons	Tennis court clubhouse	From 8am	Potential for public announcements/music	Mobile speakers throughout the precinct as required*	8am - 11pm*
	Queuing/holding area for concerts allowing patrons who wish to arrive early to secure premium positions (e.g.: front of the stage) to enjoy the Precinct	Precinct Village lawn	From 8am	-	-	-
	Potential for public announcements/music	Mobile speakers throughout the precinct as required	From 12pm	-	-	-

Uses	Event Days			Non-Event Days		
	Activity	Location	Time of Activity	Activity	Location	Time of Activity
Active & passive outdoor recreation	Tennis court use (exhibition sporting events and organised events)	Tennis courts	8am - 11pm	Tennis court use including personal training sessions for use by Stadium Fitness Facilities members	Tennis courts	8am - 11pm
	-	-	-	Children play, sitting & eating, recreation (kicking footy, etc)	Precinct Village lawn	From 8am

*Subject to the approved noise levels for event and non-event days as identified in the Operational Management Noise Plan (Arup, August 2022).

4.0 Community Notification Procedures

4.1 Sporting Events

Once a sporting event has been confirmed and scheduled at the venue by the Sporting Codes, notification of the event is updated on the Venues NSW website to provide event details including:

- Date of the event;
- Details of the participating teams as applicable;
- Gate opening times (members and public); this is the earliest time that patrons will be allowed to enter the venue;
- Kick-off time for the game, being the time play commences within the venue;
- Starting time for the main event (if not a sporting fixture).

The website will be updated at least 5 to 14 days prior to any scheduled sporting or nonconcert event.

The community can access the VNSW website and receive updates of new events being held at the SFS.

Similar information is also uploaded on each of the codes and club websites. Club and Stadium Fitness Facilities Members will also be notified of newly confirmed events.

Forecast sporting event schedules will continue to be provided to MEOG and TfNSW as a forward projection of potential events to be held 6 to 12 months into the future. This enables coordination and planning across all precincts wide events. Once the sporting event is confirmed all stakeholders are notified including MEOG, TfNSW, TransDev, City Rail, NSW Police, Playbill, GSP, etc. Stakeholders will be provided details of the forecast crowd including event specific details. In addition, TfNSW issue transportation specific notifications via VMS signage across the road network to advise road users of upcoming events. This notification typically occurs 2 - 3 days ahead of events.

4.2 Concert Events

Once a concert has been confirmed and scheduled at the venue by the event Promoters, notification of the event is updated on the Venues NSW website to provide event details including:

- Date of the event;
- Details of the performing artist;
- Gate opening times; this is the earliest time that patrons will be allowed to enter the venue;
- Start time for opening act;
- Start time for main act; and
- Anticipated start time and finish time for the main act.

The community are able to access the VNSW website and receive updates of new events being held at the SFS.

Concerts are typically confirmed 6 to 8 months ahead of the scheduled event. Once the concert event is confirmed all stakeholders are notified including EPA, MEOG, TfNSW, TransDev City Rail, NSW Police, Playbill, GSP, etc. Stakeholders are provided details of the forecast crowd including event specific details this enables event planning to consider implications and interferences with other activities in the Precinct, including double headers (typically sporting events) at the SCG, and to review potential clashes with scheduled trackwork¹. In addition, TfNSW issue transportation specific notifications via VMS signage across the road network to advise road users of upcoming events. This notification typically occurs 2 - 3 days ahead of events.

Five (5) to fourteen (14) days prior to any scheduled concert event, notification of upcoming concerts will be distributed by a letterbox drop to noise sensitive receivers within the notification resident boundary outlined in the approved Operational Noise Management Plan. This will include sensitive receivers as nominated in the development consent, being UTS, Disney Studios and Kirra Child Care Centre. The letter box drop will provide details of the event including:

- Times of the concert rehearsal;
- Duration of the concert rehearsal;
- Times of planned sound tests/checks;
- Duration of sound tests/checks;
- Time of Concert including start time of opening act and main act, and any planned pyrotechnic displays, specifically including the details listed in Section 4.5.3 of the approved Operational Noise Management Plan in respect of any proposed aerial shells and other high noise impact pyrotechnics;
- Duration of concert, description of concert and expected crowd attendance; and
- Details of the contact person & website for feedback or complaints.

A copy of the letter box drop will also be provided to the EPA for information.

The process undertaken by Venues NSW when planning for events is illustrated in Figure 3.

¹ It is highly unlikely that a double header event would ever comprise two concerts (one at the SFS and one at the SCG) given the cumulative acoustic emissions. Double header concert events have not been held historically on this basis.

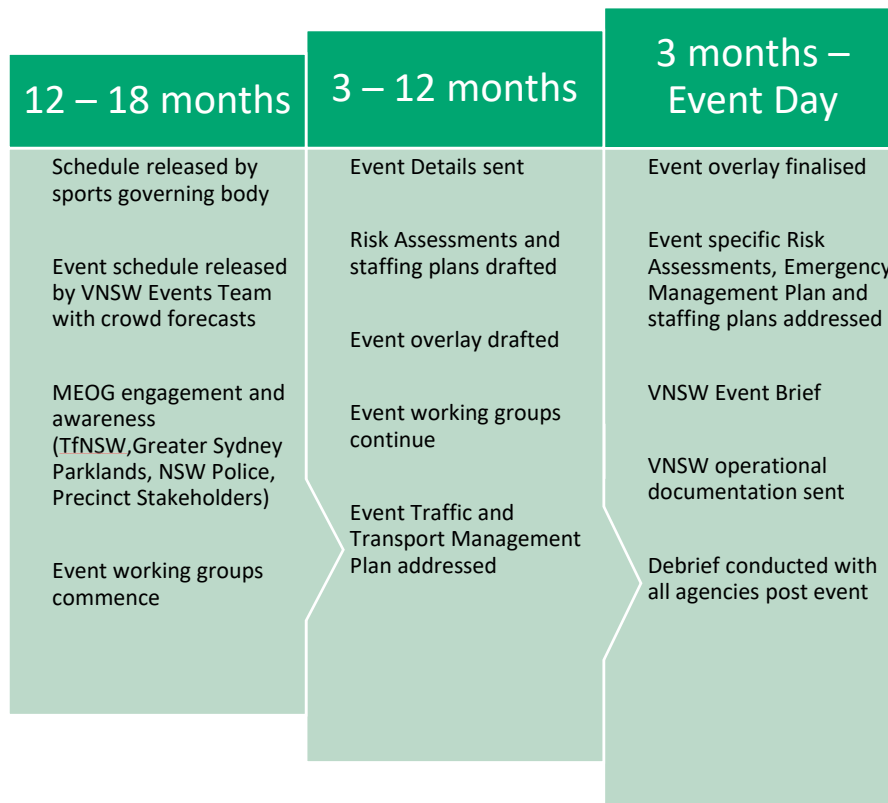


Figure 3 Event planning process

5.0 Precinct Arrival and SFS Entry

The SFS is in the heart of Sydney, located within the Moore Park sports and entertainment precinct. The Event Traffic and Transport Management Plan, Green Travel Plan, Event Car Parking Management Plan and Passenger Pick Up and Drop Off Facilities provide detailed guidance on the various ways to access the SFS either by vehicle, public transport or on active transport such as walking and cycling. This section summarises the key aspects of those plans with specific reference to how patrons will ingress and access the SFS on event days.

5.1 Public Transport

The SFS is well serviced by a variety of public transport options as illustrated in Figure 4.



Figure 4 Public and active transport modes to the SFS

5.2 Light Rail

The CBD and South East Light Rail network comprises of:

- L2 Randwick Line operating in both directions between Circular Quay & Randwick via Central Station; and
- L3 Kingsford Line operating in both directions between Circular Quay and Juniors Kingsford via Central Station.

The Moore Park Light Rail stop closest to the SFS is adjacent to Anzac Parade and opposite Sydney Girls High School, approximately 100 metres north of Lang Road.

Light rail services run frequently on weekdays and weekends from 5am until 1am daily. Services operate every four to ten minutes outside of events and every two to four minutes during events. Up to 24 services per hour can operate between Central Station and Moore Park during events providing capacity for nearly 11,000 people per hour. At maximum capacity, an additional 12 services per hour operate between Randwick/Kingsford and Moore Park and can accommodate a further 5,400 people per hour. The light rail is therefore considered the primary means of public transport to access the SFS.

5.3 Train

The nearest train station to the SFS is Central Station. Central Station provides access to all the service lines on the Sydney Train Network and is one of the busiest train stations. The 1.8-kilometre route along Devonshire Street and the Albert Tibby Cotter is the most direct pedestrian connection between Central Station and the SFS and can be walked in 20-25 mins.

5.4 Sydney Bus Services and Special Event Shuttle Services

Several regular bus routes service the Moore Park sports and entertainment precinct, stopping along Anzac Parade.

Table 8 Sydney Bus Routes Servicing the SFS

Bus Stop	Anzac Parade
From Australian Museum	373
From Circular Quay	333, 373 & 396
From Central Station	374, 339
From Bondi Junction	333, 352, 355 & 440

**Monday - Friday only*

Event shuttle buses service events from Central – Chalmers Street for select events as determined by Transport for NSW as part of the MEOG process. These services are implemented on SFS event days operate from the following locations:

Table 9 Event Shuttle Buses Servicing the SFS

	Prior to Events	End of Events
Pick Up	Central Station at Chalmers Street south of Devonshire Street	Moore Park Bus Terminal Stand A
Drop Off	Moore Park Bus Terminal Stand A	Stand F in Foveaux St

5.5 Kiss and Ride, Taxi, Rideshare and Coach Services

Detail regarding taxis, rideshare and available pick up and drop off points for events are captured and can be referenced within the Event Traffic and Transport Management Plan (ETTMP) as required by Condition D16 of SSD 9835. This plan is reviewed and updated annually and can be accessed below.



SFS Event Traffic & Transport Management

5.6 Pedestrian Arrival

SFS patrons arriving on foot have a variety of options to enter the SFS. Pedestrians are able to enter the SFS via a variety of level and at grade pedestrian walkways from the north, north east and south west of the SFS, including Moore Park Road, Driver Avenue, and the public domain across Moore Park and Albert Tibby Cotter Bridge. Most patrons arriving to the venue site will do so via Moore Park Road and Driver Avenue. Details of the specific pedestrian arrival paths are detailed in the Event Traffic and Transport Management Plan (ETTMP) as required by Condition D16 of SSD 9835.

Pedestrians arriving from the light rail stop or Tibby Cotter Bridge can access the SFS concourse area through the main western staircase which will be open to the public at all times of the day.

Eight gates will facilitate access and egress into the SFS as outlined in Table 10 below. Gate locations are illustrated in Figure 5.

Table 10 SFS Entry Gates

Gate	Prior to Events
Gate 1	General Public
Gate 2	VNSW Members & Corporate
Gate 3	General Public
Gate 4	Only used during A-league matches for Sydney FC fans ('The Cove')
Gate 5	Corporate & General Public
Gate 6	Egress only
Gate 7	Opposing fans during A-league matches
Gate 8	Corporate & Media



Gate	Prior to Events
Gate 1	General Public
Gate 2	VNSW Members & Corporate
Gate 3	General Public
Gate 4	Only used during A-league matches for Sydney FC fans ('The Cove')
Gate 5	Corporate & General Public
Gate 6	Egress only
Gate 7	Opposing fans during A-league matches and egress only for all other events
Gate 8	Corporate & Media
	Ticket box office

Figure 5 Pedestrian Arrivals and Departures

5.7 Pedestrian Departures

The majority of SFS patrons travel south from the SFS towards key public transport nodes such as the light rail stop, event bus area and Central Station via the Tibby Cotter Bridge. Pedestrians travelling towards Oxford Street primarily use the pathways within Moore Park

East. Approximately 2% of pedestrians utilise the Moore Park Road southern footpath and cross over the northern carpark egress point. This location will be subject to traffic control following the conclusion of events to manage interactions between pedestrians and vehicles.

5.8 Cycling Arrivals and Departures

Cyclists can access the SFS from a few directions, including Moore Park Road and Driver Avenue. Bike parking facilities are located along Moore Park Road adjacent to the northern portion of the SFS public domain.

The Moore Park Cycleway is closed to cyclists throughout the events to reduce conflicts between cyclists and pedestrians. The closure is facilitated through signage as well as the placement of vehicles along the cycleway.

5.9 Pedestrian Safety Measures

At a macro level, pedestrian safety and efficiency is significantly improved through the relocation of the stadium from the Moore Park Road/Regent Street intersection by creating additional space for pedestrians to store and wait within the site boundary. A greater buffer is now provided between the SFS and Moore Park Road which will provide storage space for pedestrians. During events, many pedestrians depart the Precinct to the south and west towards the light rail stop, with only a small proportion of people crossing Moore Park Road to travel towards Oxford Street. Pedestrian demand along the Moore Park Road frontage of the SFS will further reduce on final completion of the Precinct Village and Car Park given that the project (post Stage 2) will allow pedestrians to travel directly towards the Driver Avenue/Moore Park Road intersection. Only a small proportion of pedestrians, estimated to be 2%, will walk along the Moore Park Road footpath adjacent to the SFS when entering and exiting the stadium.

Pedestrian safety will also be ensured through:

- at the discretion of MEOG, implementation of traffic and pedestrian arrangements particularly on Moore Park Road and Driver Avenue for different event types to minimise the need for any lane / road closures on Moore Park Road;
- following discussions with MEOG, preparation of a series of Traffic Control Plans (TCPs) by a qualified contractor to further detail traffic management arrangements to be in place in the Precinct as well as management of pedestrian flow and crowd swell.
- collaboration with NSW Police who will determine appropriate pedestrian safety measures having regard to:
 - the day of week and time of day event is scheduled
 - attendance demographic
 - weather
 - event sporting code / teams involved
 - type of contest (e.g. close match where attendees are more likely to stay until the final siren and not leave early);
 - anticipated egress timeframe (e.g. there may be post-match activities planned which disperses egress movements)
 - other events that may be occurring in the Moore Park Precinct or changes in the environment external to the stadium
- *Upon completion of the Precinct Village and Car park redevelopment, consideration will be given to closing sections of Driver Avenue footpaths before and after Category C or above events to ensure optimal pedestrian safety is maintained.*

- traffic control at the future car park egress point on Moore Park Road to manage interactions between pedestrians and vehicles post event (Category B or above) following completion of the Precinct Village and Car Park;
- operational road network changes introduced by TfNSW and the GSP to improve traffic flows pre and post events;
- improvement in operational efficiency of Entertainment Quarter car park; and
- elimination of existing pedestrian / vehicle conflict points on Driver Avenue at EP2 car park.

In addition, the Road Safety Audit (RSA) prepared pursuant to Conditions D20 and D21 of SSD 9835 does not identify any additional pedestrian/traffic measures required to be implemented above and beyond those committed above.

5.10 Event Day Patron Parking

Event day parking will be facilitated across the Precinct and through the use of satellite parking facilities. The main parking areas are located adjacent to the SFS to the West. Another undercover facility is located at the Southern portion of the Entertainment Quarter. The Centennial Park and Moore Park Trust Act has been amended to establish new timing for the prohibition of on-grass parking in Moore Park East. Parking on EP2 will be prohibited from 1 July 2026 or a later date prescribed by regulation if the new carpark on Venues NSW land is not open to the public and operational. Parking on EP3 will be prohibited from 1 July 2026 or a later date prescribed by regulation if the Minister is not satisfied an appropriate plan to address transport needs, including parking, in relation to events at SCG and Allianz Stadium is in place.

The *SFS Event Traffic & Transport Management Plan* (refer to section 5.5) provides full details of the approved car parking arrangements.

5.11 Event Day Sporting Partner and Operational Parking

There are 50 parking bays within the SFS basement. The allocation of parking bays amongst Sporting Partner representatives and operational vehicles is agreed in conjunction with the sporting partner Event Manager, Venues NSW Event Manager and Venues NSW Loading Dock Manager prior to each event.

5.12 Satellite Parking

The Event Traffic and Transport Plan makes provision for preferred satellite parking options at Entertainment Quarter, Randwick Racecourse and the University of New South Wales (Kensington Campus).

6.0 Event Day Experience (Public Domain, Seating and Field of Play)

The SFS concourse and surrounding public domain provide an opportunity to create a highly activated and curated series of spaces, where SFS patrons and community members can enjoy a diverse range of experiences and activities on event days.

The following sections describe the different spaces available for activation and curation. Tiering and seating arrangements and wheelchair seating is also detailed.

6.1 External Concourse Activation Zones

The north west corner and the north east corner on the external concourse are the primary activation zones. Prior to events, all proposed activations require approval and sign off by Venues NSW Chief Warden and Event Manager following the review of associated risk assessments and set up documentation.

The Precinct Village is located on the land west of the SFS. It extends to Moore Park Road and Driver Avenue and will adjoin the existing UTS/Australian Rugby Development Centre (ARDC) and NRL Central buildings. The Precinct Village is an exceptional community asset of iconic design, that visually and physically connects to the adjacent Moore Park East and Kippax Lake. It provides patrons with quality café and dining experiences in an idyllic parkland setting and well-being play and relaxation nodes which engage with all ages. The Precinct Village is proposed to be curated as a series of distinct, flexible and purpose specific settings for event day patrons and the general public. These inviting public places will offer rich, engaging and shared experiences.

The activation space in the north west corner is located in close proximity to the Stadium merchandise Store and Bar, designed around the historic Fig Tree, which provides a key feature for the space. The space has been designed to be inclusive and engaging to increase its appeal to both local residents and visitors to the SFS. The north west corner consists of four service zones, one drinking fountain and numerous seating locations. Each service zone is provided with:

- 1x 32amp 3ph outlet
- 1x 10amp 1ph outlet
- 1x data point
- 1x potable water point

Figure 6 identifies the proposed north west activation footprint.



Figure 6 North West corner Activation Place

The north east corner is considered to be the second most utilised pedestrian connection to the SFS, making it an excellent space to activate. The space consists of three service zones, one drinking fountain, outdoor exercise equipment, half-basketball court and numerous seating options. During a double header event, this area will need to be kept clear to meet emergency management requirements.

Figure 7 identifies the proposed north east corner activation footprint.

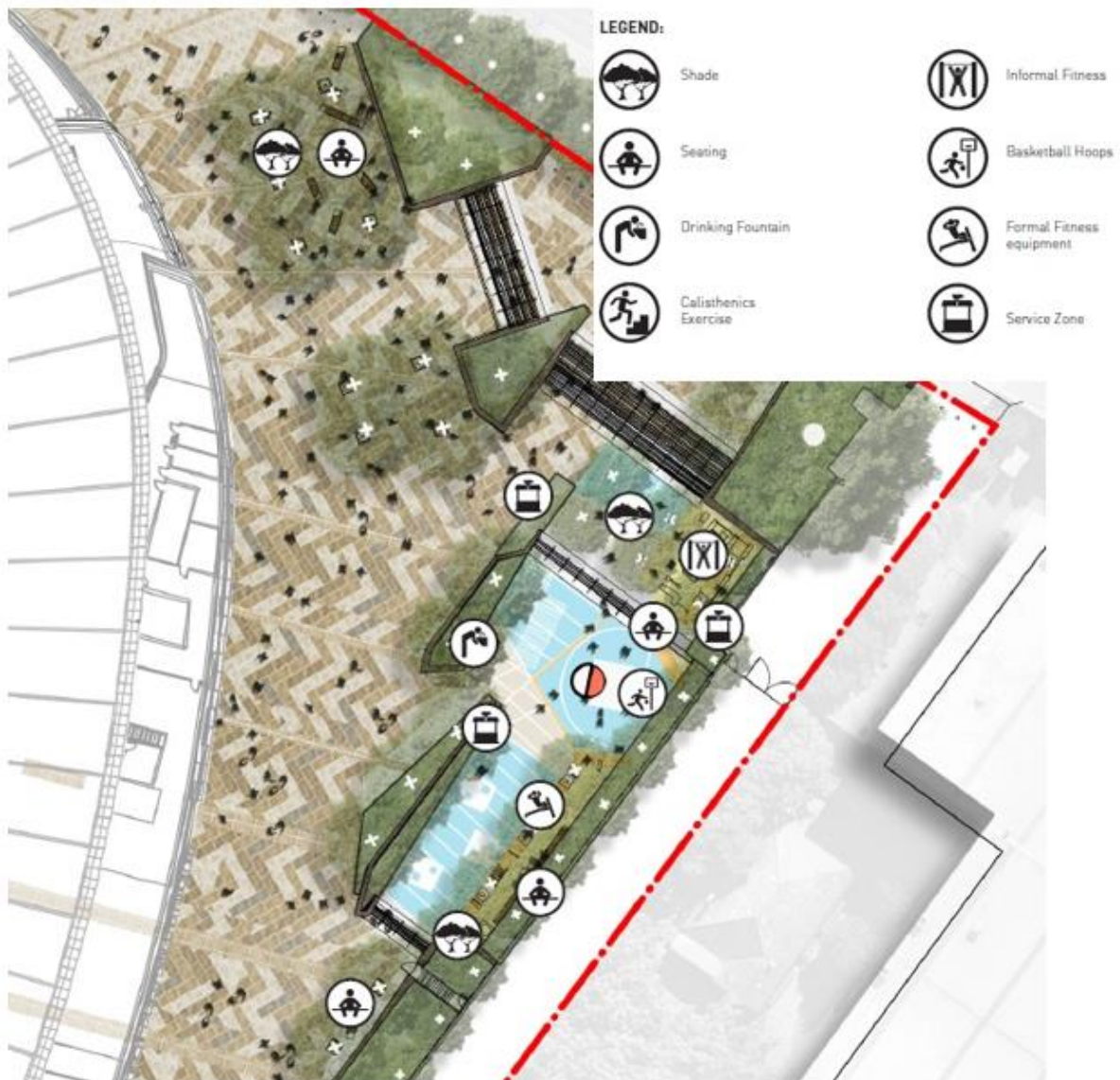


Figure 7 North East corner Activation Place

The main access stairs from Driver Avenue are the primary pedestrian access point to the SFS and consists of four (4) service zones and bench seating. Activations in this space will need to be small and need to ensure they do not impede on ingress and egress.

Another potential option for activation is the SCG Plaza area. The usage of this space will be dependent on events at the SCG. There are minimum public amenities available, however it does consist of four service zones and seating.

6.2 Internal Concourse Activation Zones

The internal concourse has been designed to be wide and open to accommodate pedestrian flows. There is sufficient space to accommodate pop ups and further activation. Prior to the event, a plan will need to be submitted and endorsed by the Venues NSW Chief Warden and Event Manager to ensure the activations do not impede on ingress, egress, and emergency management. There is a minimum of one power outlet every 30 metres along concourses and corridors which may be utilised if available.

6.3 Tiering and Stadium Capacity

The SFS comprises four (4) levels of seating, each of which is allocated to specific patrons and uses. Accessible seating is provided for the elderly and mobility impaired within each level and to accommodate opposing fans within Active Fan Zones

The following table summarises the maximum number of patrons to enter the SFS at level 1 (concourse level) via turnstiles, the turnstile numbers and the distribution and breakdown of accessible seating. From level 1, patrons will travel to upper levels to their allocated seat.

Gate	Expected Patrons	Turnstiles	Accessible Seating
1	15,202	27	<ul style="list-style-type: none"> • Concourse Level 1 <ul style="list-style-type: none"> • Easy Access - 48 seats • Wheelchair Accessible - 140 seats • Wheelchair Companion - 140 seats • Level 2 <ul style="list-style-type: none"> • Easy Access - 16 seats (west) • Wheelchair Accessible - 64 seats • Wheelchair Companion - 64 seats • Level 3 <ul style="list-style-type: none"> • Easy Access - 10 seats (west) • Wheelchair Accessible - 57 seats • Wheelchair Companion - 57 seats • Level 4 <ul style="list-style-type: none"> • Easy Access - 40 seats • Wheelchair Accessible - 68 seats • Wheelchair Companion - 68 seats
2	9,243	12	
3	9,035	10	
4	0	0	
5	9,099	14	
6	0	0	
7	0	0	
8	160	2	
TOTAL	42,739	65	

6.4 Field of Play

Activations on the field of play may be possible with the approval of the VNSW Grounds Team.

'Take to the Turf' involves fans being invited onto the field of play via the perimeter LED gates. This normally occurs 10 minutes post full time, once all players, officials and broadcasters have left the field of play. Take to the Turf may be approved by the VNSW Grounds Team and VNSW Event Manager. The following items may impact the approval process:

- Time of game - *Take to the Turf* will not be approved for games commencing after 7pm
- Weather - wet weather or severe weather conditions may limit the ability to host the activation
- Scheduling and turf load - based on other scheduling and turf load, grounds may not approve *Take to the Turf*

The gradient of the roof precludes helicopters from landing on the field of play. However, parachute landings could be considered on individual occasions and in such instances would require a specific management plan to be prepared and approved by Venues NSW.

6.5 Pyrotechnics

Pyrotechnics are likely to be used during certain events.

Requirements for pyrotechnics displays are provided in the following documents.

- Event Planning Pyrotechnics & Chief Warden Checklist (Venues NSW, 2021);
- Venues NSW Pyrotechnics & Special Effects Policy Recommendations (Foti International Fireworks, 2022) - outlines:
 - minimum requirements for pyrotechnics and special effects contractors
 - permitted areas for use for various aerial shells, ground fireworks, indoor and close proximity fireworks / pyrotechnics, and non-pyrotechnic special effects.
- the Pyrotechnics Policy (Venues NSW, 2021).

Any pyrotechnic displays will be undertaken with the existing approved pyrotechnics matrix which considers the relative risk associated with:

- Fire, explosion, uncontrolled release
- Risk to worker and patron health and safety
- Damage to the field of play
- Noise

Table 11 outlines the different types of pyrotechnics that may be approved for usage.

Table 11 Pyrotechnics Matrix

Name	Description of Risk	FOP	BOUNDARY	Indoor/ Areas
Aerial Shells	High Velocity	X	X	X
Comets	High Velocity	X	X	X
Mines	High Velocity	X	X	X
Fountains	Secondary Ignition	✓ *	✓	✓ ***
Lances	Secondary Ignition	✓ *	✓	X
Roman Candles	Secondary Ignition	X	✓ *	X
Cakewheels	High Velocity, multi-directional	X	X	X
Salutes	Noise	X	X	X
Gerbes	Secondary Ignition	✓ *	✓	X
Flames	Secondary ignition	✓ *	✓ *	X
Smoke Effects	Asphyxiation	✓	✓	✓ ***
Smoke Flares	Asphyxiation	X	X	X
Rocket Flares	High Velocity	X	X	X
Sparklers	Secondary ignition	✓	✓	✓ ***

✓ Approved Pyrotechnics

X Not approved Pyrotechnics

* Additional measures required for approval

** Fire system Isolation required for approval

The use of pyrotechnics during events will be closely managed to ensure all stakeholders of the Moore Park Precinct are not adversely affected including patrons, workers, professional sportspersons and entertainers, facilities, media, neighbours; Disney Studios and Centennial Parklands as well as surrounding residents.

If aerial shells and other high noise impact pyrotechnics are used, the venue hirer, provider and/or the Venues NSW will notify local residents:

- by means of letterbox drop at least 21 days from the date of the display;
- letters will note the date, specific start and finish times of the display/s and details of the pyrotechnics used;
- letters will provide clear details of how to contact Venues NSW should residents have any questions or wish to make a complaint before, during or following the display; and
- letters will also provide details on the Venues NSW information hotline, email address and website where noise management information can be found, including access to a copy of the approved Operational Noise Management Plan.

All applications for the usage of pyrotechnics will require the prior approval of VNSW's Event Manager and WHS Manager and will need to be accompanied by a risk assessment and management plan to ensure the proposed application will meet the requirements of the development consent and associated management plans.

Due to material used to construct the roof (PTFE Coated fibreglass), pyrotechnics will not be used on the SFS roof. All pyrotechnics from the field of play must maintain clearance from roof height.

Figure 8 identifies the locations for possible pyrotechnic placement on the field of play.

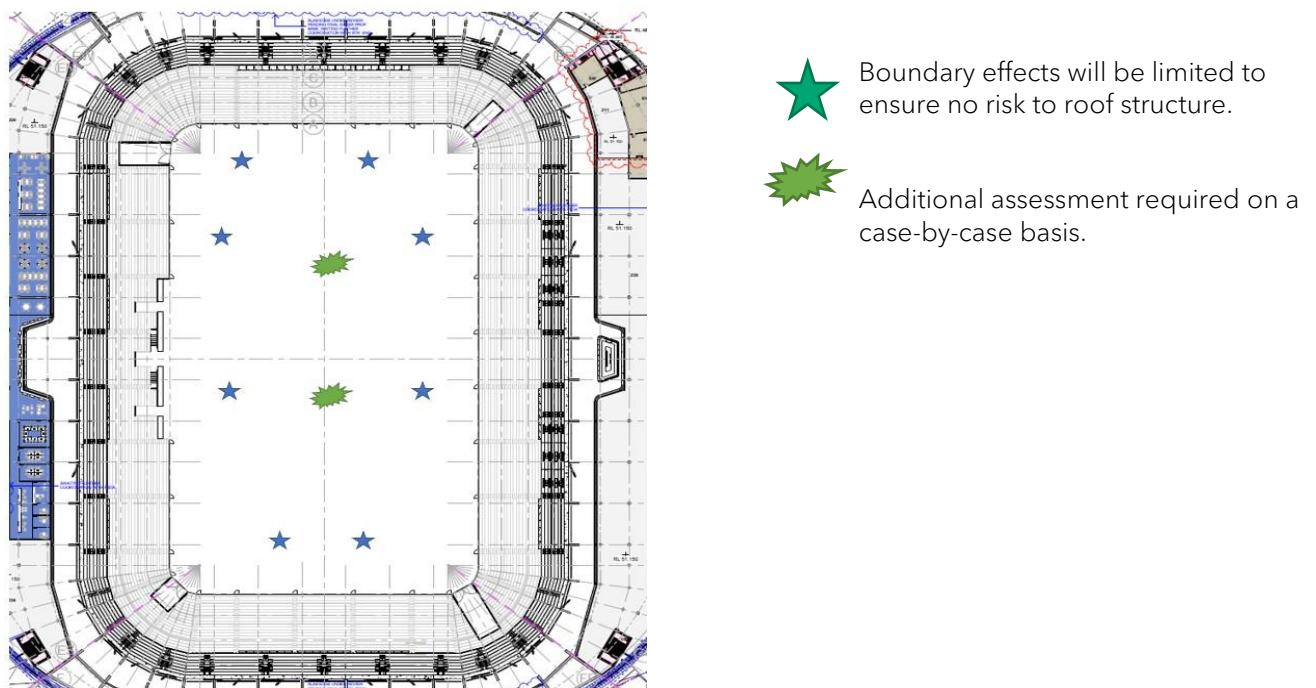


Figure 8 Pyrotechnics Placements

6.6 Merchandise

Merchandise is available on Level 1. There is one outlet at the South West corner of the internal concourse. There is also one super store located at the North West corner. The superstore is accessible from both the internal and external concourse. It is approximately 168m².

7.0 Event Day Management and Venue Configuration

7.1 Event Manager

The Venues NSW Event Manager is responsible for all event day operations, reporting to the General Manager on Duty. All departments report to the Event Manager on any issues or requests. The Event Manager will make the final decision on any event related issues. The only exception to this rule is Emergency Management, which is managed by the Chief Warden in conjunction with NSW Police.

The Event Manager will lead an Event Day Briefing for all Customer Service Supervisors, Team Leaders and Security Supervisors. Representatives from departments working at the event will also attend this briefing. The brief will provide key staff with information regarding the event day operations.

The Event Manager is the main point of contact for the Sporting Partner/Promoter throughout the event. They will conduct a short de-brief with the Sports Partner/Promoter at the end of the event to discuss any key issues that may have arisen. A detailed event debrief will also be conducted with the Sporting Partner/Promoter during the week following the event.

The Event Manager is responsible for opening and closing the venue for the event. During an event the Event Manager liaises with the Venues NSW Precinct Manager who works closely with Greater Sydney Parklands, Transport for NSW and the Transport Management Centre, and NSW Police during peak periods of ingress and egress.

The Venues NSW Precinct Manager will provide regular updates to the Event Manager throughout the event. Anti-social behaviour is managed through the Venues NSW Security team in conjunction with NSW Police, in accordance with the approved Anti-Social Management Strategy. The Event Manager is a central part of these communications, ensuring all parties are working cohesively and any updates in these areas are reported back to the control room, where all incidents are logged and affected parties informed.

7.2 Other Staff

Venues NSW Customer Service staff play a key role in assisting with wayfinding and managing crowds in accordance with the approved Event Traffic and Transport Management Plan, Event Car Parking Management Plan, Passenger Pick Up and Drop Off Facilities Plan, Green Travel Plan and the Signage and Wayfinding Strategy. Venues NSW has a dedicated team of staff to manage Driver Avenue and Moore Park Road queuing both pre and post events. Venues NSW staff are assisted by NSW Police in crowd management as required.

Event Day staff are briefed to report any suspected anti-social behaviour to the control room where the security team can monitor on camera and escalate to authorities if required.

7.3 Event Operations Centre

The SFS Event Operations Centre will be utilised on request by large event organisers, such as FIFA.

Typically, the Venue Operations Centre (VOC) located within the Sydney Cricket Ground will be used as the primary point of control for all events at the SFS. During double header events, the VOC will be configured into two distinct VOCs with both events operated through the one control room.

7.4 Active Fan Zones

During sporting fixtures, accommodating fans from opposing teams is an important consideration to creating an exciting atmosphere whilst ensuring the security and safety of patrons. Avoiding cross over between opposing fans is one of the most effective mitigator especially for more energetic opponents.

The central northern lower-level bays have the ability to be configured into a 1,700 capacity standing zone by replacing seats with safe standing barriers. The standing zone will be used predominantly for Sydney FC fans, colloquially known as The Cove.

Conversely, opposing team fans will be accommodated within the southern stand.

VNSW will be responsible for managing the convertible seating process, including the storage and re-installation of seats.

Patrons will enter the active fan zones from opposite ends of the SFS to avoid any crossover and ensure they are separated from the general public in the seating bowl. Active Fan zone separation is managed through security personnel and Police.

Limited football events at the SFS will require overlay to manage Active Fan Zones. This will be done on a case-by-case basis depending on the teams playing. Where required, football events such as Sydney FC against Western Sydney Wanderers (WSW), will include a specific a patron arrival plan to accommodate the Football Club marches to the SFS that considers timing, routes, group cross overs. The patron arrival plan will be developed in consultation with all stakeholders including:

- NSW Police
- Transport for NSW and the Transport Management Centre
- Greater Sydney Parklands
- Sydney FC
- Western Sydney Wanderers

7.5 CAPO

A CAPO is someone who leads and stands on a small platform to be seen by the fans. A demountable and temporary capo stand, capable of safely accommodating two (2) people, is provided at the front and centre of the home active fan zone. The structure will require bump in/out for each event, where it is required.

7.6 TIFO

A TIFO is the word used to describe a colourful, vibrant, and usually choreographed visual display or flags by football supporters. In many cases the visual displays are carefully planned and often each individual supporter forms part of a mosaic by wearing or holding a particular colour. Currently, there is no permanent system installed at Allianz stadium to facilitate a TIFO.

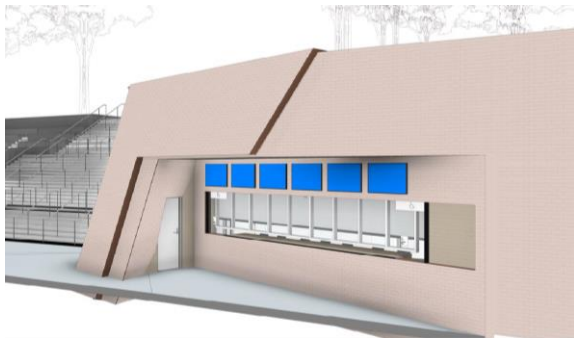
7.7 Ticket Box Offices

There are three locations for Ticket Box Offices (TBO) and Patron Services Offices (PSO).

TBOs sell, issue, and provide assistance regarding tickets.

PSOs are predominantly used by VNSW and Sporting Partners to assist with general event enquiries and distribute accreditation passes. Each PSO will be fitted with shelving and incorporate storage space.

The locations and configuration of TBOs and PSOs are detailed below.



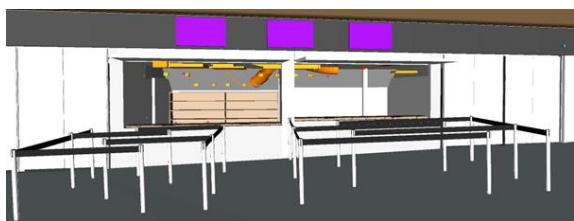
Level 0 (Ground level), South West

- 9 service windows
- 2 accessible service points at either end
- 6 external screens above the service windows



Level 1, North West

- 12 service windows
- 4 accessible service points two at either end
- 7 external screens above the service windows



Level 1, East

- 8 service windows
- 1 accessible service point
- 7 external screens above the service windows

7.8 Team Facilities and Amenities

Team Facilities are located on Level 0 on the western side of the SFS as illustrated in Figure 9 and comprise:

- four change rooms
- warm-up area
- coaches briefing room
- wet area (including hot/cold baths)
- drinks station
- medical room

- physio and massage room
- coaches office

If all four change rooms are in use, the warm-up area, coaches briefing room and recovery areas are configured as a shared space to be managed by the teams.



Figure 9 - Team Facilities

7.9 Tunnel Club

The Tunnel Club is a premium hospitality space that is positioned between the Team Facilities. The Tunnel Club acts as the player entry to the field of play.

Teams have the option of using the alternative field of play entries (secondary tunnel), located either side of the Tunnel Club denoted as double doors nearest the physio and massage rooms.

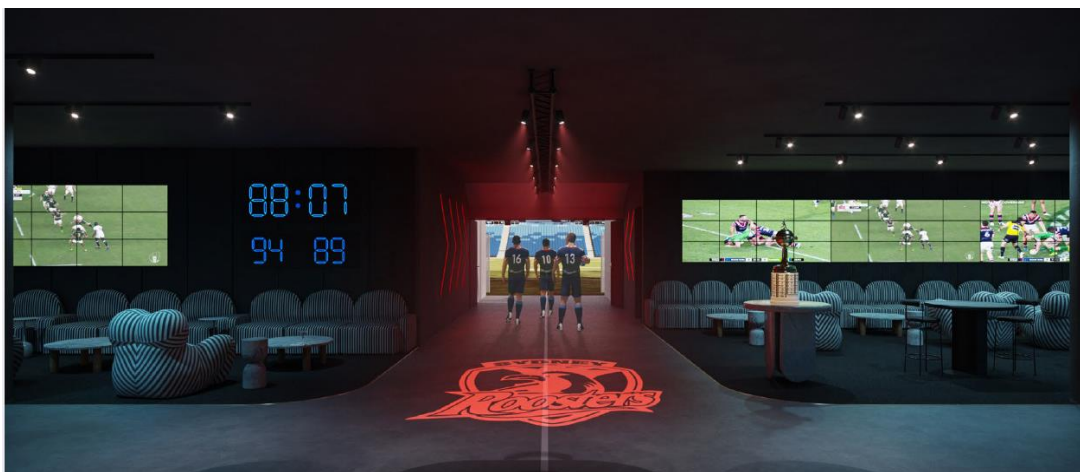


Figure 10 - Artist Impression of Tunnel Club

7.10 Sporting Partner Storage

There are three storage areas within the southern Team Facilities for the three sporting teams for which the SFS is their home ground, being the Sydney Roosters, Sydney FC, and the NSW Waratahs. The storage area is accessed via the ring road and is lockable. Each team storage is 6.2m (L) x 3.2m (W).

7.11 Substitutes Benches

There are two substitute benches, both capable of accommodating 14 players. Both benches have premium seating without armrests, are partially undercover and have unobstructed views of the field of play. Each substitute bench area is connected via the ICT system to their respective coaches' box and briefing area, locker room and medical room. Each bench is also serviced by 4 x double GPOs power and has access to filtered drinking water supply.

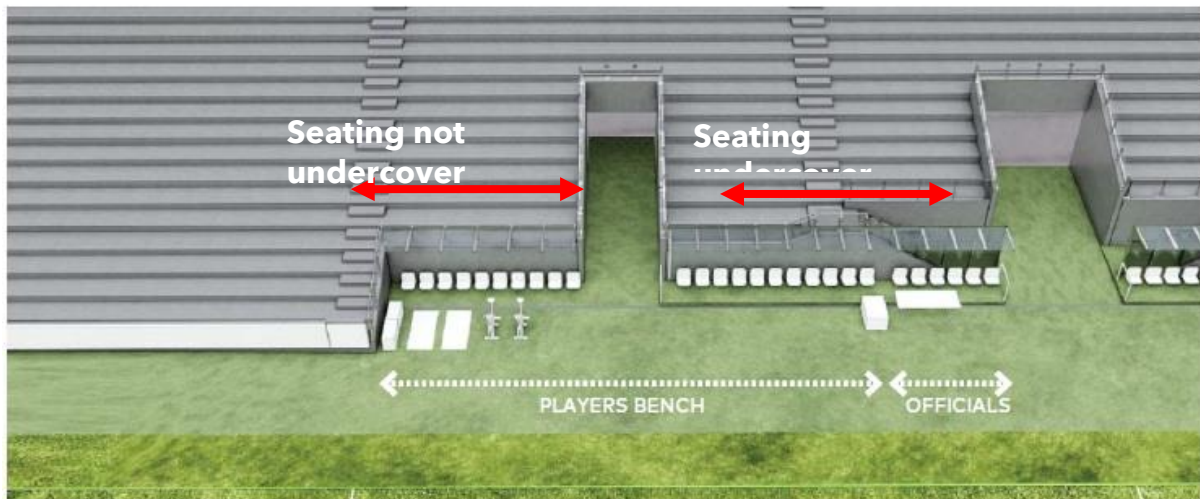


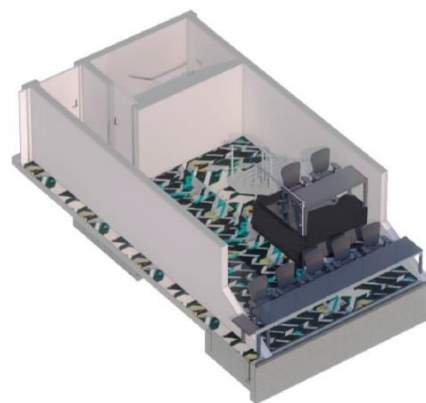
Figure 11 - Artist Impression of Substitute Benches

7.12 Coaches Box

7.12.1 Coaches Boxes

Two (2) coaches boxes are located on Level 3 of the western stand and comprise:

- Capacity for 10 persons (6 seating positions at the front and 4 at the back)
- Private bathroom
- 2 x television 50" displays
- 4 x distributed monitors
- Ceiling speakers with dual functionality providing playback of local audio feed or playback of the SFS wide PA system
- Touchscreen controller provided to control video content
- Two way "duplex" intercom system to player benches
- LCD Clock
- Network connections to player benches, team locker room, coaches briefing area, medical room, and coaches office
- Venue Wi-Fi



7.12.2 Match Officials Room and Boxes

An Officials Room including female and male dressing rooms is located in the basement.

Three (3) match officials boxes are located on Level 3. Match official boxes have capacity for six (6) persons. Each official box has local control for the siren and event time clock to allow each box to operate as the official timekeepers locations.

Each match officials box comprises:

- 2x 50" television display
- Ceiling speakers with dual functionality providing playback of local audio feed or playback of the SFS wide PA system
- Touchscreen controller provided to control video content
- Venue Wi-Fi

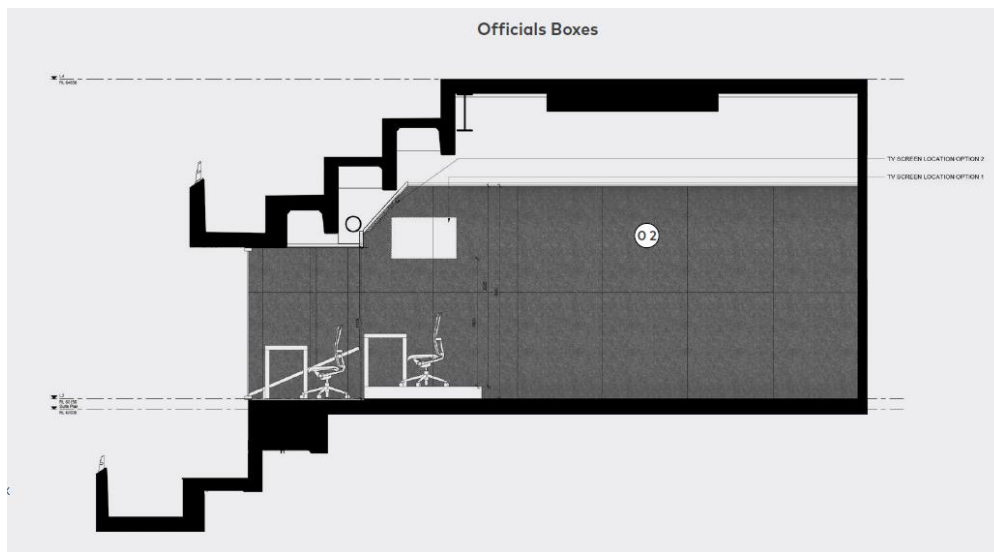


Figure 12 - Coaches and Match Officials' Boxes

7.13 Hirers Office

There is a Hirers Office located in the basement which is allocated to Sporting Partners to utilise on event days as well as the days leading into an event. This space may be used for event operations and administrative tasks, cheer squads, mascots or other activations.

8.0 Medical Facilities

8.1 Patron Medical Room

The primary patron medical room is located in the SFS basement. Two (2) First Aid Posts are also located on each level as follows:

- Patron Medical - Basement, South/West Corner
- First Aid Post - Level 1 - East & West Stand
- First Aid Post - Level 2 - East & West Stand
- First Aid Post - Level 3 - East & West Stand
- First Aid Post - Level 4 - East & West Stand

8.2 Ambulance

Ambulance access is provided via the North West security checkpoint off Driver Avenue. The ring road within the basement provides direct ambulance access to the Patron Medical Room.

Two (2) marked ambulance parking spots are provided within the basement. During events, the ambulance can be positioned within the North West or South West PAV, if required.

8.3 Automatic External Defibrillators

Defibrillators are distributed throughout the SFS in the following locations.

Basement Locations

- Patrons Medical Room
- Players Independent Medical room
- Players Medical room North and South
- Security check in
- Tunnel Club entrance

Concourse locations

- Level 1, 2,3, and 4 First Aid Medical Posts
- North and South Point
- Venues NSW Office - Utility Room

8.4 Player Medical Room

A medical room is provided within each of the team change rooms. A separate player medical room is also located within the basement and comprises:

- 2 x adjustable medical examination beds
- 2 x wall mounted examination lights and localised temperature control
- 1 x wall mounted defibrillator
- Mobile bottled oxygen and suction trolley
- Refrigerator and ice bin
- 1 x phone
- 1 x display
- 1 x unisex accessible toilet

Player and Official Emergency Medical Plans (POEM Plan) as well as Match Stop Protocols have been developed in conjunction with each sporting code to satisfy specific code/team requirements.

8.5 Medicab

There is a designated parking and charging location for the Medicab, which is located near the South West corner of the SFS adjacent to the Player Medical Room. Access to the team change room for the Medicab is via the secondary tunnels off the Field of Play.

During events, the Medicab will be stationed in the Pitch Access Vomitory (PAV) with full view and access to the field of play.

9.0 Patron Facilities

9.1 Parenting Rooms

Parenting Room locations are distributed throughout the SFS as follows:

- Level 1 - North-West corner
- Level 1 - North-East corner
- Level 2 - Eastern side
- Level 4 - Southern side

9.2 Changing Place

There is one Changing Place available located on Level 1 - North West corner. The Change Room will accommodate a height adjustable adult size changing table and hoist system, providing additional accessible facilities for Persons Requiring Universal Access (PRUA) that are not provided within standard accessible toilets.

The Changing Room is accessible via the external public concourse as well as the internal concourse and will be available on event and non-event days.

9.3 Prayer Room

One Prayer Room is located on Level 1 on the South East corner.

10.0 Grounds

The SFS field is a ready to play surface of Santa Ana Couch, oversewn with Rye grass and has a built-in sub surface drainage system. The playing surface measures 74m (W) x 123m (L). The field has a run-off of 5 metres on all sides comprising of 2 metres of natural turf and 3 metres of synthetic turf.

Power has been installed in various location around the field of play.

10.1 Flags and Banners

There are a total of six flags within the SFS.

Three flag poles at the northern end of the SFS is exclusively reserved for the Australian Flag, NSW State flag and indigenous flag. The recommended flag size for these poles is 2.74 x 1.37 metres.

Three flags will be displayed on the SFS's eastern truss system. These flags will be reserved for home and away team flags and competition flags and will be a standard size of 4.56 x 2.28 metres.

Banner flags will be 3060 x 1080 mm erected on smart poles.

10.2 Sprinkler System

The sprinkler system is controlled via the Rain Bird Site control central Irrigation system.

10.3 Field of Play Signage

The field of play has a complete perimeter LED however it may be desirable by sporting partners to bump in free standing static signage behind the goals. Sporting partners will need to seek approval from Venues NSW Grounds Department to install additional static signage. If approved, flooring will be laid to assist in protecting the turf.

10.4 Booking Process

Outside of sporting requirements, the field of play may be used for alternative activities such as photo/film shoots, corporate hospitality photo opportunities, commercial opportunities on occasion.

Each field of play access request will be reviewed on a case-by-case basis and approval will be at the sole discretion of the Venues NSW curator. Approval will be dependent on several factors including (but not limited to) weather, sporting content load, turf condition, maintenance works among other considerations.

11.0 Security

11.1 Security

A Security Management Plan has been submitted to the NSW Police in accordance with Condition D28(f). NSW Police has advised Venues NSW that it will issue a letter directly to the DPE confirming NSW Police has received the Security Management Plan.

The Security Management Plan outlines the security policies and procedures relating to event and non-event days. Venues NSW will manage all aspects of event day security requirements at the SFS as dictated by the Venues NSW and/or Sporting Partner/Promoter.

All security documentation will be in accordance with the following:

- Venues NSW Security Framework;
- Venues NSW Security Operations Manual;
- the Hostile Vehicle Mitigation Plan;
- Crime Prevention Through Environmental Design Review;
- Anti-Social Behaviour Strategy; and
- Management principles of the Emergency Management Plan.

11.2 Security Check Points

Security check points will always be conducted external to the curtilage of the SFS and will comprise bag checks and wandings. For patrons, there are two locations for these check points, which will depend on the venue configuration and any overlay requirements.

For other users such as staff, media, players and officials, security check points will occur at Accreditation Access Points.

11.3 Terms and Conditions of Entry

Venues NSW has existing Terms and Condition of Entry which will apply to all events at SFS. All Terms and Conditions will be displayed at all entry points to the venue. The Sporting Partner and/or Promoter will also provide their own Terms and Conditions for their events, which will additionally be displayed at all entry points.

11.4 CCTV

An extensive CCTV system is in place for both the SCG and SFS and will be operated from the control room 24 hrs a day on event and non-events days by full time security guards.

11.5 Hostile Vehicle Mitigation Plan

The Hostile Vehicle Mitigation Plan has been prepared in accordance with Condition B54 and was confirmed as being received by Planning Secretary in September 2021. The Hostile Vehicle Mitigation Plan must remain confidential to protect the successful implementation of the identified response and evacuation strategies. The recommended hostile vehicle management controls have been incorporated into the SFS's design. The specific measures can broadly be categorised as a combination of bollards, engineered solutions, and furniture to achieve the proposed level of protection.

11.6 Crime Prevention Through Environmental Design Review

The Crime Prevention Through Environmental Design Review (CPTED) for Stage 2 has been completed in accordance with Condition B55 and was endorsed by Planning Secretary in July 2021.

As a result of the CPTED review, a number of design refinements were adopted to ensure clear sight lines, well designed and supporting landscaping, and adequate lighting within the public domain. Other design refinements directly emanating from the CPTED analysis include:

- installation of CCTV;
- minimisation of concealed or isolated areas;
- provision of adequate signage and information;
- reduced opportunities for unauthorised access;
- hostile vehicle mitigation;
- measures to reduce undesirable activity (e.g. sleeping on benches, skateboarding, etc); and
- good housekeeping measures (such as the strategic positioning of bins etc).

The recommendations of the Review have been incorporated into the SFS design and signed off by the certifier. Further information of the results of the review and the measures that were refined and are detailed in the CPTED Review for Stage 2, which is publicly available on the project website at: www.infrastructure.nsw.gov.au/projects-nsw/sydney-football-stadium-redevelopment/.

This Event Management Plan adopts the relevant operational recommendations of the CPTED Review for Stage 2, including CCTV, waste management, hostile vehicle management and anti-social behaviour.

12.0 Emergency Response, Evacuation and Crowd Control

12.1 Emergency Responses

An Emergency Management Plan has been prepared by Venues NSW in accordance with Condition D26. The Emergency Management Plan details the emergency management measures for the SFS and has been prepared in consultation with the Sydney Metropolitan Regional Emergency Management Committee, Sydney Coordination Office and Transport Management Centre within TfNSW, NSW Police, Fire and Rescue NSW, Council, and Greater Sydney Parklands. The Emergency Management Plan has also been prepared to satisfy the requirements of the Work Health and Safety Act 2011 and Australian Standard AS3745:2010 Planning for Emergencies in Facilities.

The Emergency Management Plan details the approach that Venues NSW will adopt to analyse, identify, evaluate, and treat emergency related to risk or situations that may arise from an internal or external source. It provides information and guidelines for the implementation of a systematic plan for Venues NSW management and staff to respond to an actual or potential emergency quickly and decisively.

The Emergency Management Plan must remain confidential to protect the successful implementation of the identified response and evacuation strategies, however key principles of the Plan are summarised below as they relate to event management:

- Venues NSW will prepare a Crowd Management Plan for each tiering structure.
- Venues NSW will deploy area wardens and crowd control staff for each event as necessary.
- Where required, NSW Police will be located on site and work alongside the Venues NSW security staff and guards to make public safety decisions.
- The requirement for an ambulance or fire and rescue appliance will be reported to the control room to log the call and inform relevant parties. The Venues NSW Event Manager will then advise the Venues NSW Head of Security (or delegate) to ensure roads are clear and to ensure clear access to the venue. NSW Police or event security will be tasked to manage crowds in or around emergency service vehicles.
- Emergencies on event days will be managed by the Chief Warden and NSW Police commander. The Chief Warden will make the call for all supervisors and key stakeholders to switch their radios over to the Emergency Channel. From here customer service and security supervisors will follow direction from the Chief Warden to manage crowds.
- Concerts will require a separate Emergency Egress Plan based on the event layout to document patron departure. This will be based on the combined capacity on the Field of Play and seating bowl and will take into consideration the unique layout of the stage and any other infrastructure on the Field of Play.

12.2 Crowd Control

The SFS has been designed to satisfy all necessary Australian legislation, Standards, and the Green Guide. This Green Guide provides the standards and requirements for patron safety at sports grounds.

Crowd swells and crowd densities will be closely monitored by control room operators and supervisors. Event day staff will disperse patrons around the SFS to reduce risk, provide clear information and ensure that any crowded area has protection measures in place.

To avoid crowd swell during ingress/egress, Driver Avenue will be closed 1 hour prior to gates opening until roughly 1 hour post event (or until deemed safe to re-open). Crowd conditions will be monitored and managed by NSW Police who will close roads as necessary.

Emergency exit routes and the relevant emergency wayfinding signage are identified in the Emergency Management Plan. Emergency Exit Layout plans will be placed throughout the Stadium to assist patrons with safe evacuation. Figure 13 identifies the designated Emergency Assembly Areas should evacuation be required:

- Non-Event Mode
 - Primary Assembly Area - Driver Avenue, Centennial Park Kippax Lake
 - Secondary Assembly Area - As determined by the Chief Warden
- Event Mode
 - Primary Assembly Area - EP2 on grass area (Lower Kippax)
 - Secondary Assembly Area - EP3 on grass area (Showground)



Figure 13 - Emergency Assembly Areas

Should the Assembly Areas be deemed unacceptable by the Chief Warden during an incident, the Chief Warden will suggest an alternative Assembly Area which will be communicated clearly to all ECO members.

In Event Mode, it should be noted that in the event of an evacuation from the precinct, it is expected that patrons will disperse within the local area. Area Wardens, Wardens, Police and Security will ensure patrons are guided away from any known risks or threats - the access routes will be determined on a case by case basis depending on the nature of the emergency and number of spectators to be evacuated.

12.3 Anti-Social Behaviour

The Anti-Social Behaviour Strategy has been completed in accordance with Condition B55 and was endorsed by Planning Secretary in July 2021. The Anti-Social Behaviour Strategy is publicly available on the project website (<https://www.infrastructure.nsw.gov.au/projects-nsw/sydney-football-stadium-redevelopment/>).

Anti-social behaviour is a term used to describe behaviours that are nuisances, disruptive and/or criminal and can include disorderly conduct, non-domestic violence and sexual assault, malicious damage to property, theft, and drug offences. Anti-social behaviour within football stadiums is a recognised issue and can also include intimidating other patrons, property/vehicle damage, littering, physical aggression, and drinking. The Anti-Social Behaviour Strategy (2021) aims to address offensive conduct, alcohol and drug misuse, physical and assault issues, malicious damage to property and theft/robbery.

Venues NSW is committed to working collaboratively with the NSW Police and the community to continue to develop and deliver appropriate mechanisms to prevent anti-social behaviour at the stadium. Management measures to mitigate anti-social behaviour have been outlined in an Anti-Social Behaviour Mitigation Plan that forms part of the above mentioned strategy and includes but is not limited to:

- security and surveillance measures such as CCTV to monitor the site, implementation of adequate lighting, mobile security patrols, screening of items bought into the stadium and ongoing maintenance of fixtures, landscaping and remediation of damage to assets (including removal of graffiti);
- conditions of entry measures including the prohibition of restricted items such as alcohol, glass or knives;
- alcohol management measures;
- maintenance of the stadium and the public domain to deter unwanted behaviour;
- public reassurance and community empowerment by publicising Venues NSW commitment to prevent anti-social behaviour and provide patrons and staff with information regarding how and where to report this behaviour or register complaints;
- victim support measures; and
- enforcement action.

Further detail is provided in the Anti-Social Behaviour Strategy.

The measures summarised above and as identified in the Anti-Social Behaviour Strategy's Mitigation Plan (refer to Section 6 of that document) have been incorporated into the SFS design and signed off by the certifier. This Event Management Plan adopts the relevant operational recommendations, including CCTV, security and NSW Police presence and enforcement, stringent terms and conditions of entry (including screening of items and enforcing restrictions on prohibited and restricted items) and complaints management.

Venues NSW has a plan of management for the Responsible Services of Alcohol (RSA) Plan which can be tailored for each event in accordance with the legislative framework and the type of event.

12.4 Stop Play Procedures

As part of the event planning process Sporting Partners and/or Promoters will be required to establish clearly documented stop play procedures for events. This will be unique to each event and its requirements.

12.5 Waste Management

The Waste Management Plan has been prepared and has been submitted to the certifying authority for approval in accordance with Condition D41. The Waste Management Plan is publicly available on the project website (<https://www.infrastructure.nsw.gov.au/projects-nsw/sydney-football-stadium-redevelopment/>).

The mechanisms for reduced littering in the areas surrounding the SFS (outside the site boundary) are detailed in the Waste Management Plan and should be referred to for the proposed approach.

In summary:

- Refuse collection:
 - Refuse will be collected by a private contractor organised and overseen by the cleaning services contractor in collaboration with SFS representatives.
 - Refuse collection will be based on a 'per event' collection frequency, allowing for a 'capacity' event to be catered for before a collection service is required. Additional services may be required for the collection of the office areas waste to assist with minimising odours and ensuring refuse does not sit for long periods between servicing.
 - All refuse collections will occur at the Waste Compound at north west of Level 0.
 - Refuse collection vehicles will enter the precinct via the driveway on Driver Avenue.
- Refuse storage:
 - All refuse will be stored in bins located within bin stores and bin bays located on each level for the temporary collection of refuse materials, or within the Waste Compound at north west of Level 0.
- Refuse transfer:
 - Bins will be collected directly from the bin stores on each level and transferred by the cleaning services contractor to the waste compound during operational times or as required.
 - No additional transfer will be required by collection contractors as the bins are collected directly from the waste compound for servicing.
- Refuse disposal:
 - All tenancies/outlets will be provided back-of-house receptacles for the immediate disposal of all required refuse streams. Once full or as required, tenancy/outlet staff will dispose of refuse directly into the bins provided at the nearest bin store. Bin stores are located on each level.

Major events and double headers may attract larger crowds or reach venue capacity, resulting in increased activity within surrounding community. Such events may require additional cleaning services beyond the immediate SFS (and SCG) precinct to alleviate community concerns and maintain standards in the public realm (e.g. targeting excess litter) during the arrival-to-venue phase of spectators, possibly during the event operational time and post-event phase (spectator egress).

In these instances, a cleaning service patrol team will be engaged and dispatched to monitor surrounding pedestrian pathways and parklands, conducting 'litter picking' only (e.g. beverage containers, event related material, general spectator litter).

12.6 Complaints Management

Complaints during an event will be collected via email, phone or through the Venues NSW app/website, each of which is detailed below:

- Complaints line: 02 9360 6601
- Email address: reception@venuesnsw.com
- Website: www.allianzstadium.com.au/customer_feedback

The Social Impact Monitoring Program prepared in accordance with Condition D49 identifies a number of indicators which seek to reduce the number of complaints regarding anti-social behaviour and waste management. VNSW Head of Security & Precinct Services and VNSW Event Security Manager will monitor the complaints register and implement corrective actions immediately after the event or on a quarterly basis as required.

Specific protocols for reporting and responding to noise complaints are established by the Operational Noise Management Plan prepared in accordance with Condition D48.

Real time noise measurement data from the first three Concert Events, have been provided to the EPA and the Planning Secretary, accompanied by supporting analysis of data obtained at the identified permanent noise monitoring locations. At the completion of the Trial Period (Aug 2024), Venues NSW must produce a report to the satisfaction of the Planning Secretary, including a detailed review of the noise limits and monitoring locations to demonstrate that the noise generated by the various types of Events at the stadium comply with the intent of the noise limits established in Stage 2 SSD DA - Noise and Vibration Assessment (Arup, 2019) and demonstrating that noise impacts are no greater than those experienced under the statutory Notice of Preventive Action 1003904. The Post Trial Completion Report will also assess the performance and suitability of the noise monitoring locations at the end of the Trial Period and determine whether the approved and installed number of monitors (2) and suitability of microphone locations is appropriate or requires revision. Further noise reporting details are provided in the approved Operational Noise Management Plan.

Within seven days of a noise non-compliance being observed, the Planning Secretary must be notified in writing to compliance@planning.nsw.gov.au.

Complaint details will be recorded in a complaint register, to be maintained by Venues NSW. The appointed Venues NSW Representative for each Event will also be responsible for immediately notifying the venue operations centre when a noise complaint is received. Following the end of the current 5-minute noise measurement period, should an exceedance of noise limits occur, noise levels shall be reduced by the amount of the exceedance. If no exceedance is noted, current noise levels shall be recorded in the complaint register.

Furthermore, under the Operational Noise Management Plan, real time noise measurement data from the first three music concerts must be provided to EPA and the Planning Secretary to validate the noise limits established for the SFS. If non-compliance is reported during these concerts, the written advice from EPA and the Department will need to be obtained and appropriate actions undertaken including (but not limited to) refinement of the ONMP, prior to the commencement of the next music event at the SFS, following the event where the noise measurements were undertaken, and data was submitted.

If residents/neighbours make complaints to the EPA or the City of Sydney, Venues NSW will be notified and take appropriate action. An evaluation of the complaints received will be undertaken in conjunction with the assessment of compliance with noise and time limits to correlate complaints with limit exceedances.

13.0 Delivering the Event Management Plan

13.1 Implementation Action Plan

A combination of planning and non-planning mechanisms will be used to achieve the actions identified throughout this Event Management Plan.

As outlined in earlier sections, key commitments include:

- ongoing engagement and coordination through MEOG with precinct stakeholders, as required;
- preparation of event specific patron arrival plans, crowd management plans and emergency egress plans, as required;
- deployment of area wardens and crowd control staff for each event, as necessary;
- collaboration with NSW Police to work alongside the Venues NSW security staff and guards; and
- implementation of the operational measures set out within this Event Management Plan.

13.2 Performance Monitoring

The performance of the Event Management Plan will involve annual review and amendment, should it become out of date and/or further modifications are approved.