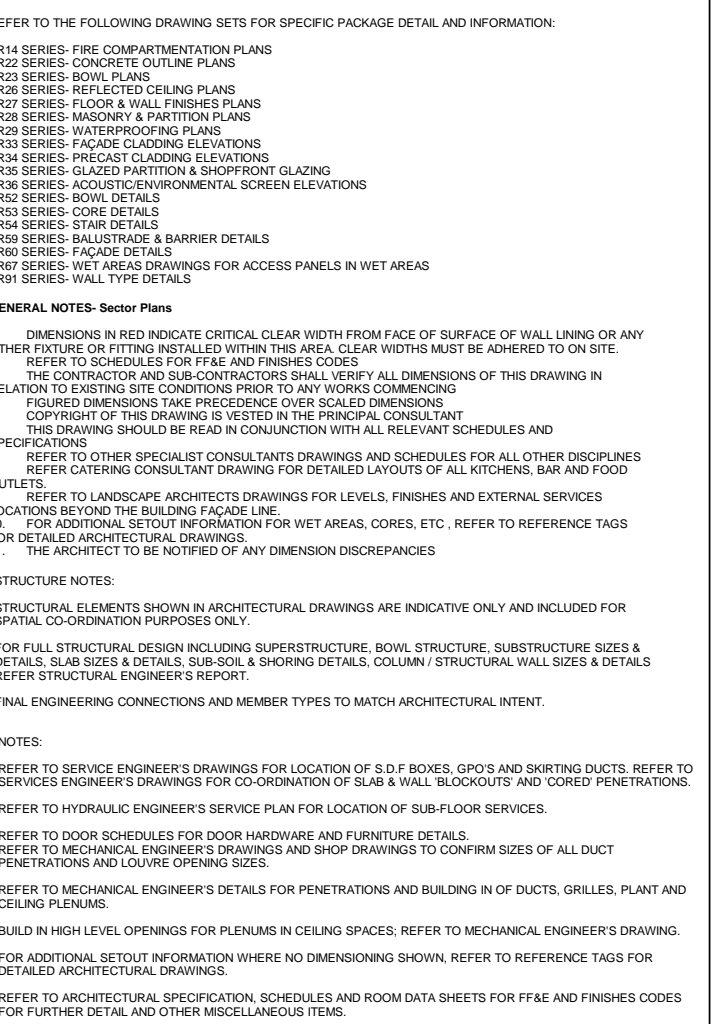




Keynote Legend	
Key Value	Keynote Text
BAL	MESH IN SS BALUSTER
BK1	EXTERNAL BRICK CLADDING
BK2	EXTERNAL BRICK CLADDING - HIT AND MISS
FT-1	ALUMINIUM FRAMED GLASS - FIXED AND OPERABLE
GL.S01	CLEAR GLAZING TO STAIRWELL
PCE	PRECAST CONCRETE SLAB EDGES, PLANTERS & PERGOLAS
PCP	PRECAST CONCRETE PLANKS



 PRINT IN COLOUR

we are **in**sw Infrastructure  
New South Wales

**venues.**  
new south wales

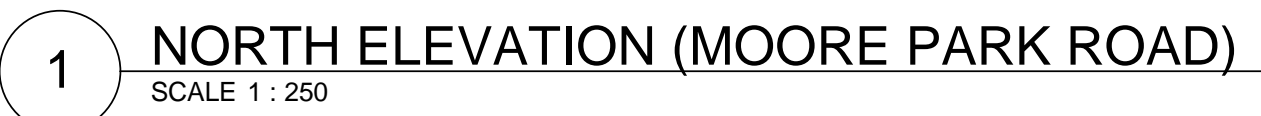
**Cox Architecture**  
Level 6, 155 Clarence Street,  
Sydney, NSW 2000, Australia  
T + 61 2 9267 9599  
F + 61 2 9264 5844  
[www.coxarchitecture.com.au](http://www.coxarchitecture.com.au)

**Nominated Architects**  
Jon Angus no. 5157  
Russell Lee no. 6367

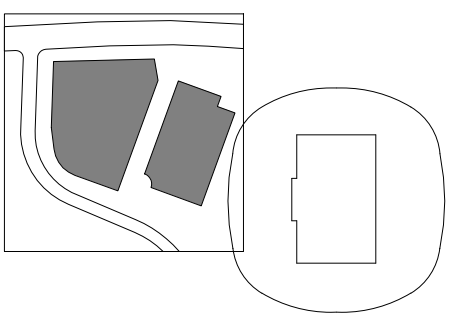
Consultants/Subcontractors	
NAME	
ADDRESS	
TELEFAX	
WEBSITE	
EMAIL	
<div>C O X</div>	
Discipline	
Project No.	
218018.00	
Project	
Sydney Football Stadium Redevelopment Driver Ave, Moore Park NSW, 2021	
Document Control Status:	
SSD PRECINCT VILLAGE AND CAR PARK SECTION 4.55 MODIFICATION	
Document Control Status:	
FOR INFORMATION	

Drawing Title	
<h2 style="margin: 0;">ARCHITECTURAL SERVICES - ELEVATIONS EW</h2>	
AD DRAWING SHEET	Drawn: SL/WH
Checked by: AY	Scale: 1 : 250 @ AD
Designed by: IK	Date: 10/09/2021
Approved by: AY	Revision: C
Drawing Number:	North:
<h3 style="margin: 0;">A30.EW.02</h3>	





Keynote Legend	
Key Value	Keynote Text
BAL	MESH IN SS BALUSTER
BK1	EXTERNAL BRICK CLADDING
BK2	EXTERNAL BRICK CLADDING - HIT AND MISS
FT-1	ALUMINIUM FRAMED GLASS - FIXED AND OPERABLE
GLS01	CLEAR GLAZING TO STAIRWELL
PC1	PRECAST CONCRETE SLAB EDGES, PLANTERS & PERGOLAS
PCP	PRECAST CONCRETE PLANKS



## LOCATION PLAN

[illegible][illegible]

we are **inSW** Infrastructure New South Wales **venues.**  
new south wales

**Cox Architecture**  
Level 8, 155 Clarence Street  
Sydney, NSW 2000, Australia  
T +61 2 9267 9599  
F +61 2 9264 5844  
[www.coxarchitecture.com.au](http://www.coxarchitecture.com.au)

**Nominated Architects**  
Joe Agius no. 6491  
Russell Lee no. 6367

CO.

CC

Consultants/Subcontractors

NAME:  
ADDRESS:  
TEL/FAX:  
WEBSITE:  
EMAIL:

COX

Discipline

Project No. 218018.00

Project

Sydney Football Stadium  
Redevelopment  
Driver Ave, Moore Park  
NSW, 2021

Document Control Status:

SSD PRECINCT VILLAGE AND CAR PARK  
SECTION 4.55 MODIFICATION

FOR INFORMATION

Drawing Title

ARCHITECTURAL SERVICES -  
ELEVATIONS NS

NO DRAWING SHEET

Checked by: AY

Designed by: IK

Approved by:

Drawing Number

A30.NS.0.

---

100 90 80 70 60 50 40 30 20 10 0







[illegible]

REFER TO THE FOLLOWING DRAWING SETS FOR SPECIFIC PACKAGE DETAIL AND INFORMATION

- AREA SERIES: FIRE COMPARTMENTATION PLUMB
- AREA SERIES: CONCRETE OUTLINE PLUMB
- AREA SERIES: WALL PLUMB
- AREA SERIES: REFLECTED CEILING PLUMB
- AREA SERIES: FLOOR & WALL JOINT PLUMB
- AREA SERIES: MASONRY & PARTITION PLUMB
- AREA SERIES: INTERIOR PLUMB
- AREA SERIES: FACED CLADDING ELEVATIONS
- AREA SERIES: PRECAST CLADDING ELEVATIONS
- AREA SERIES: SLAB/STAIR/CHIMNEY & SHORING/RAIL ELEVATIONS
- AREA SERIES: JOINTS/TRANSITIONAL GREEN ELEVATIONS
- AREA SERIES: BOWLS DETAILS
- AREA SERIES: CORNER DETAILS
- AREA SERIES: STAIR DETAILS
- AREA SERIES: WALL STRUCTURE & MEMBER DETAILS
- AREA SERIES: FACADE DETAILS
- AREA SERIES: WALL STRUCTURE FOR ACCESSORY BUILDING & PLANT BUILDING

[illegible]

NOTES:

REFER TO SERVICE ENGINEER'S DRAWING FOR LOCATION OF S.D. PIPES, COOL AND SHORTING DUCTS, AIR-SEALING, ELECTRICAL WIRING FOR CO-OPERATION OF SUB-IR WALL, BLOCKWORKS AND CORDED PAN  
REFER TO HYDRAULIC ENGINEER'S DESIGN PLAN FOR LOCATION OF SUB-FLOOR SERVICES.

REFER TO BOILER SCHEDULES FOR DOOR HARDWARE AND FURNITURE DETAILS.

REFER TO MECHANICAL ENGINEER'S DRAWINGS AND SHOP DRAWINGS FOR CONFINEMENTS OF ALL CORNED PAN  
PENETRATIONS AND LOCATE OPENING SIZES.

REFER TO MECHANICAL ENGINEER'S DETAILS FOR PENETRATIONS AND BUILDING IN OF DUCTS, GRILLES,  
CEILING PLUMBING.

BUILD IN HIGH LEVEL OPENINGS FOR PLUMBING IN CEILING SPACES. REFER TO MECHANICAL ENGINEER'S  
FOR ADDITIONAL SIZED INFORMATION WHERE NO DIMENSIONS SHOWN. REFER TO REFERENCE TIGHT  
DETAILED ARCHITECTURAL DRAWINGS.

REFER TO ARCHITECTURAL SPECIFICATION, SCHEDULES AND ROOM DATA SHEETS FOR FF&E AND FF&E



PRINT IN COLOUR

we are **inSW** Infrastructure  
New South Wales

**Cox Architecture**  
Level 6, 155 Clarence Street,  
Sydney, NSW 2000, Australia  
T + 61 2 9267 9599  
F + 61 2 9264 5844  
[www.coxarchitecture.com.au](http://www.coxarchitecture.com.au)

**Nominated Architects**  
Joe Agius no. 6491  
Russell Lee no. 6387

COX

Consultants/Subcontractors
----------------------------

NAME:  
ADDRESS:  
TELEFAX:  
WEBSITE:  
EMAIL:

COX

Discipline	
------------	--

Project No.	218018.00
-------------	-----------

Project

Sydney Football Stadium  
Redevelopment

Driver Ave, Moore Park  
NSW, 2021

Document Control Status:  
SSD PRECINCT VILLAGE AND CAR PARK  
SECTION 4.55 MODIFICATION  
Document Control Status:

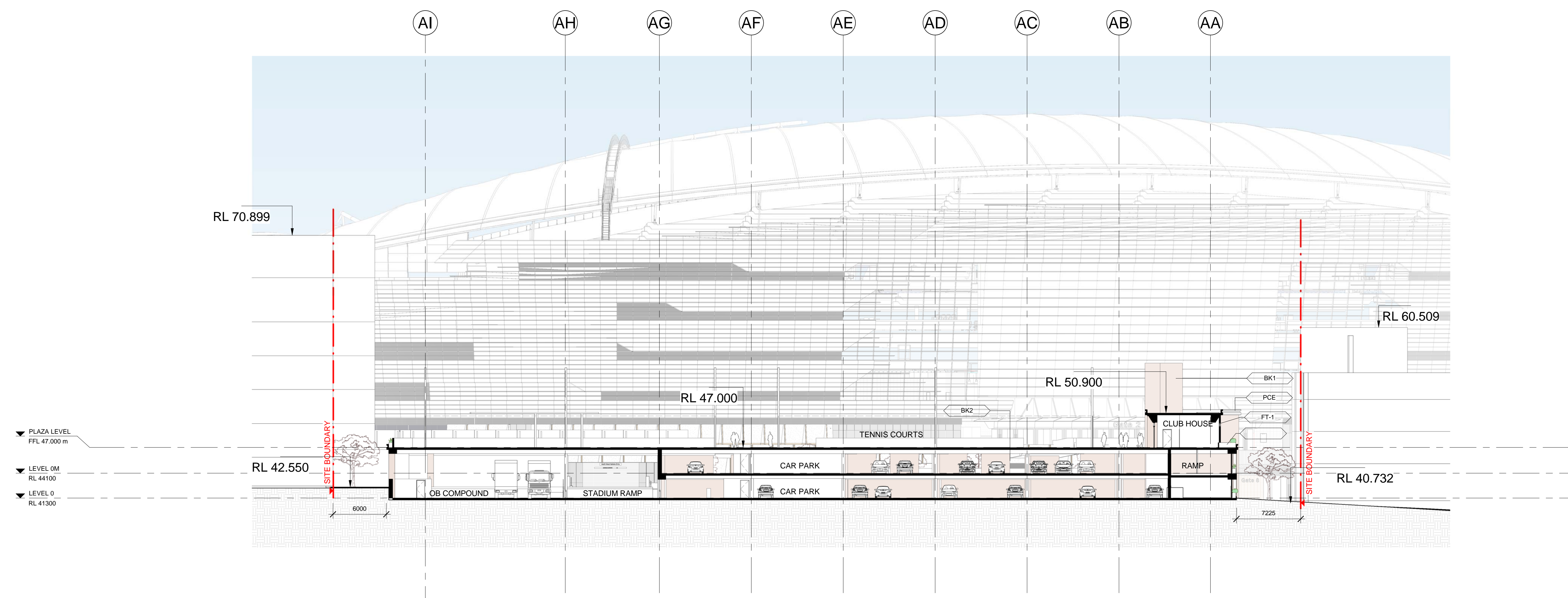
FOR INFORMATION

Drawing Title	ARCHITECTURAL SERVICES - SECTION NS
---------------	--

AD DRAWING SHEET	Drawn:
Checked by: AY	Scale: 1 : 25
Designed by: IK	Date: 10/09
Approved by: AY	Revision:
Drawings Manager:	Month:

A40.00.02	
-----------	--

2 NORTH-SOUTH SECTION (COURTS)  
SCALE 1 : 250

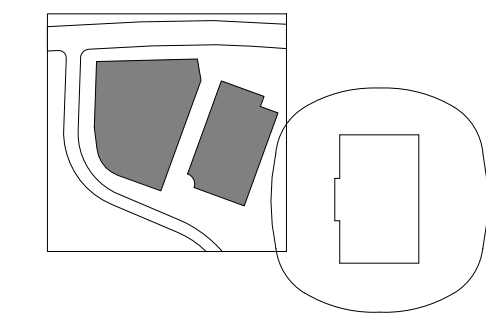


Keynote Legend	
Key Value	Keynote Text
BAL	MESH IN SS BALUSTER
BK1	EXTERNAL BRICK CLADDING
BK2	EXTERNAL BRICK CLADDING - HIT AND MISS
FT-1	ALUMINIUM FRAMED GLASS - FIXED AND OPERABLE
GLS01	CLEAR GLAZING TO STAIRWELL
PCE	PRECAST CONCRETE SLAB EDGES, PLANTERS & PERGOLAS
PCP	PRECAST CONCRETE PLANKS





Keynote Legend	
Key Value	Keynote Text
BAL	MESH IN SS BALUSTER
BK1	EXTERNAL BRICK CLADDING
BK2	EXTERNAL BRICK CLADDING - HIT AND MISS
FT-1	ALUMINIUM FRAMED GLASS - FIXED AND OPERABLE
GLSD1	CLEAR GLAZING TO STAIRWELL
PCP	PRECAST CONCRETE SLAB EDGES, PLANTERS & PERGOLAS
PCP	PRECAST CONCRETE PLANKS



## LOCATION PLAN

[illegible][illegible]

we are **insw** Infrastructure  
New South Wales **venues.**  
new south wales

**Cox Architecture**  
Level 6, 155 Clarence Street  
Sydney, NSW 2000, Australia  
T + 61 2 9267 9599  
F + 61 2 9264 5844  
[www.coxarchitecture.com.au](http://www.coxarchitecture.com.au)

**Nominated Architects**  
Joe Agius no. 6491  
Russell Lee no. 6367

C O X

Consultants/Subcontractors	
----------------------------	--

NAME:  
ADDRESS:  
TEL/FAX:  
WEBSITE:  
EMAIL:

COX

Discipline	
------------	--

Project No.	218018.00
-------------	-----------

Project

Sydney Football Stadium  
Redevelopment

Driver Ave, Moore Park  
NSW, 2021

Document Control Status:

SSD PRECINCT VILLAGE AND CAR PARK  
SECTION 4.55 MODIFICATION

Document Control Status:

FOR INFORMATION

Drawing Title

ARCHITECTURAL SERVICES - SECTIONS  
EW

AG DRAWING SHEET	Drawn: SL/WH
Checked by: AY	Scale: 1 : 250 @ A0
Designed by: IK	Date: 10/08/2021
Approved by: AY	Revision: C
Drawing Number:	North:

A40.00.03

--	--



BAL	GLASS BARRIER IN STAINLESS STEEL BALUSTER
BK1	BRICK CLADDING
BK2	HIT AN MISS BRICKWORK
COF	CONCRETE OFF FORM ALLOW FOR PAINT
PCE	PRECAST CONCRETE EDGE
PCP	PRECAST CONCRETE PLANKS

[illegible]

FOR THE FOLLOWING DRAWING SETS FOR SPECIFIC PACKAGE DESIGN, AND INFORMATION:

- 014 BRUSH-PIRE COMPARTMENTATION PLANS
- 022 SERIES-CONCRETE OUTLET PLUMB
- 030 BRUSH-BOYS PLUMB
- 026 SERIES-REFLECTED COILING PLUMB
- 021 BRUSH-FLOOR & WALL FINISHES PLUMB
- 031 SERIES-MANHOLES & PARTIALS PLUMB
- 021 BRUSH-PAVING PLUMB
- 031 SERIES-PACKAGE CLADDING PLUMB
- 024 SERIES-PIECED PARTS CLADDING PLUMB
- 031 SERIES-GRATED CLADDING & SHROPPER CLADDING
- 031 SERIES-ACQUISITION ENVIRONMENTAL SCREEN CLADDING
- 030 BRUSH-BOYS DETAILS
- 031 SERIES-CORNER DETAILS
- 030 BRUSH-THROW DETAILS
- 031 SERIES-BALLOTTING & SHOWER DETAILS
- 031 SERIES-PACKAGE DETAILS
- 031 SERIES-SET AREAS DRAWINGS FOR ACCESS PANELS IN NET AREAS
- 031 SERIES-SET AREAS

**INTERNAL COMMENTS:** Please mark any questions, corrections or other comments on this sheet. If you have any questions, please contact the person listed below. If you have any comments, please contact the person listed below. If you have any questions, please contact the person listed below. If you have any comments, please contact the person listed below.

STRUCTURE MODELS:  
STRUCTURAL ELEMENTS SHOWN IN ARCHITECTURAL DRAWINGS ARE INDICATIVE ONLY AND  
PARENT CO-ORDINATION PURPOSES ONLY.  
FOR FULL STRUCTURAL DESIGN INCLUDING SUPERSTRUCTURES, BOULDER STRUCTURE, SUBSTRUCTURE, SLAB PARTS & DETAILS, BURIAL & SHOPPING DETAILS, COLUMN / STRUCTURAL WALL  
FOR STRUCTURAL ENGINEERING REPORT.  
MINOR ENGINEERING CONNECTIONS AND MEMBER TYPES TO MATCH ARCHITECTURAL INTENT.

REFER TO SERVICE ENGINEER'S DRAWINGS FOR LOCATION OF S.D.F. BOXES, GPO'S AND SHIP SERVICES ENGINEER'S PROVISIONS FOR COOPERATION OF ISLAR & WALL TELECOMS AND

REFER TO HYDRAULIC ENGINEER'S SERVICE PLAN FOR LOCATION OF SUB-FLOOR SERVICES.

REFER TO DOOR SCHEDULES FOR DOOR HARDWARE AND FURNITURE DETAILS.

REFER TO MECHANICAL ENGINEER'S DRAWINGS AND SHOP DRAWINGS TO CONFIRM SIZES OF

MECHANICAL AND ELECTRICAL EQUIPMENT.

REFER TO MECHANICAL ENGINEER'S DETAILS FOR PENETRATIONS AND BUILDING IN OF DUCT CEILING PLUMBING.  
BUILD IN HIGH LEVEL OPENINGS FOR PLUMBING IN CEILING SPACES REFER TO MECHANICAL  
FOR ADDITIONAL SIGHT CUT INFORMATION WHERE NO DIMENSIONING SHOWN, REFER TO KEPT  
FOR DETAIL ARCHITECTURAL DRAWINGS.  
REFER TO ARCHITECTURAL SPECIFICATION, SCHEDULES AND ROOM DATA SHEETS FOR FINISH  
FOR FURTHER DETAIL AND OTHER MISCELLANEOUS ITEMS.

 PRINT IN COLOUR

\_\_\_\_\_

**Cox Architecture**  
Level 6, 155 Clarence Street,  
Sydney, NSW 2000, Australia  
T + 61 2 9267 9599  
F + 61 2 9264 5844  
[www.coxarchitecture.com.au](http://www.coxarchitecture.com.au)

**Nominated Architects**  
Jos Agius no. 6491  
Russell Lee no. 6367





NAME:

ADDRESS:  
TEL/FAX:  
WEBSITE:  
EMAIL:

COX

CC BY

Discipline

ARCHITECTURAL

Project No. 218018.00

Project  
Sydney Football Stadium

Redevelopment  
Driver Ave, Moore Park  
NSW, 2021

Document Control Status:  
SSD PRECINCT VILLAGE AND CAR PARK  
SECTION 4.55 MODIFICATION

Document Control Status:

FOR INFORMATION

Drawing Title

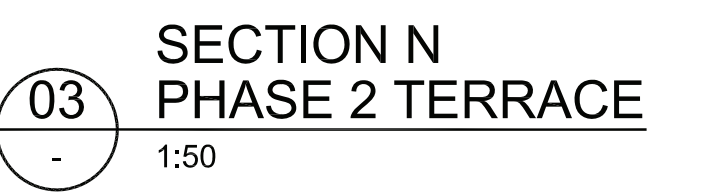
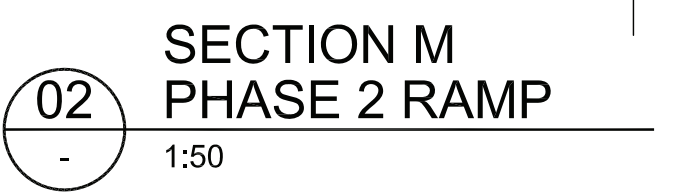
ARCHITECTURAL SERVICES -  
PHASE 1 SECTIONS

Checked by:	AJC	Drawn:
Designed by:	AJC	Scale:
		Date:

Approved by: AY  
Drawing Number: A42 00 20

--	--

Cox Architecture Pty Ltd ACN 062 555 891









BAL	GLASS BARRIER IN STAINLESS STEEL BALUSTER
BK1	BRICK CLADDING
BK2	HIT AN MISS BRICKWORK
COF	CONCRETE OFF FORM ALLOW FOR PAINT
PCE	PRECAST CONCRETE EDGE
PCP	PRECAST CONCRETE PLANKS
SSM	STAINLESS STEEL WIRE SECURITY MESH

[illegible][illegible]

NOTES:

REFER TO SERVICE ENGINEER'S DRAWINGS FOR LOCATION OF S.D.T. BOXES, GYTS AND SHORTING CORD SERVICES. ENGINEERS' CONVEYERS FOR COORDINATION OF SEAL & WALL, VIBROCASTS AND TYPED REPAIRS.

REFER TO HYDRAULIC ENGINEER'S SERVICE PLAN FOR LOCATION OF SUBMERSION SERVICES.

REFER TO SCHEDULES FOR DOOR HARDWARES AND FURNITURE DETAILS.

REFER TO MECHANICAL, ELECTRICAL DRAWINGS AND SHOP DRAWINGS TO CONFIRM TYPES OF ALL DUCT PENETRATIONS AND LOUVER OPENING SIZES.

REFER TO MECHANICAL ENGINEERS' DETAILS FOR PENETRATIONS AND BUILDING IN OF DUCTS, GALLIES, CULVERTS, PLUMBING.

BUILD IN HIGH LEVEL OPENINGS FOR PLUMBING IN CEILING SPACES REFER TO MECHANICAL ENGINEERS.

FOR ADDITIONAL S.D.T. BY DIMENSIONS WHERE NO DIMENSIONING SHOWN, REFER TO REFERENCES FOR DETAILED ARCHITECTURAL DRAWINGS.

\_\_\_\_\_

**Nominated Architects**  
Joe Agius no. 6491  
Russell Lee no. 6367

Consultants/Subcontractors	
----------------------------	--

COV

Discipline

ARCHITECTURAL

Project  
**Sydney Football Stadium  
 Redevelopment**

Document Control Status:  
SSD PRECINCT VILLAGE AND CAR PARK  
SECTION 4.55 MODIFICATION

FOR INFORMATION

AD DRAWING SHEET	Drawn:
	Checked:

Drawing Number: A42.00.25

North: 










[illegible]

 PRINT IN COLOUR

COX

COX

A3 DRAWING SHEET		Drawn: A
Checked by: AIC		Scale: 1 : 50
Designed by: AIC		Date: 10/09/20
Approved by: AY		Revision: B
Drawing Number:		North:
A54.00.10		