

CIVIL ENGINEERING WORKS



| Sheet Number | Sheet Title |
|--------------|------------------------------------|
| CI-000-01 | COVER SHEET |
| CI-070-01 | SEDIMENT & EROSION CONTROL PLAN |
| CI-076-01 | SEDIMENT & EROSION CONTROL DETAILS |
| CI-520-01 | STORMWATER MANAGEMENT PLAN |
| CI-526-01 | STORMWATER DRAINAGE DETAILS |



NBRSARCHITECTURE.


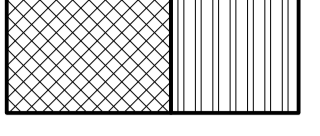

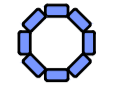
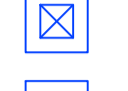


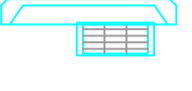




PROPOSED SEDIMENT BASIN B
 TOTAL VOLUME = 120m³
 SETTLING ZONE = 76m³
 SEDIMENT STORAGE ZONE = 44m³
 DEPTH = 2.0m
 DISPERSIBLE SOILS - FLOCCULATION REQUIRED.

PROPOSED SEDIMENT BASIN A
 TOTAL VOLUME = 544m³
 SETTLING ZONE = 359m³
 SEDIMENT STORAGE ZONE = 187m³
 DEPTH = 2.3m
 DISPERSIBLE SOILS - FLOCCULATION REQUIRED.

LEGEND

-  PROPOSED SITE BOUNDARY
-  VEHICLE SHAKEDOWN DEVICE
-  PROPOSED SILT FENCE
-  SANDBAG PIT PROTECTION
INDICATIVE SIZE ONLY. REFER TO
DETAILS FOR ACTUAL SIZE.
-  PROPOSED JUNCTION PIT
-  PROPOSED GRATED PIT
-  PROPOSED KERB INLET PIT
-  EXISTING KERB INLET PIT

NOTE:
 REFER DRAWING CI-076-01 FOR EROSION AND SEDIMENT CONTROL DETAILS



| REV | DESCRIPTION | DRAWN | APPD | DATE |
|-----|-------------|-------|------|----------|
| B | SSD ISSUE | JDU | RET | 17.07.19 |
| A | SSD ISSUE | JDL | HHC | 02.07.19 |

NSW GOVERNMENT Education
NBR ARCHITECTURE.
 ARCHITECT/CLIENT

WOOD & GRIEVE ENGINEERS
 NOW PART OF
Stantec

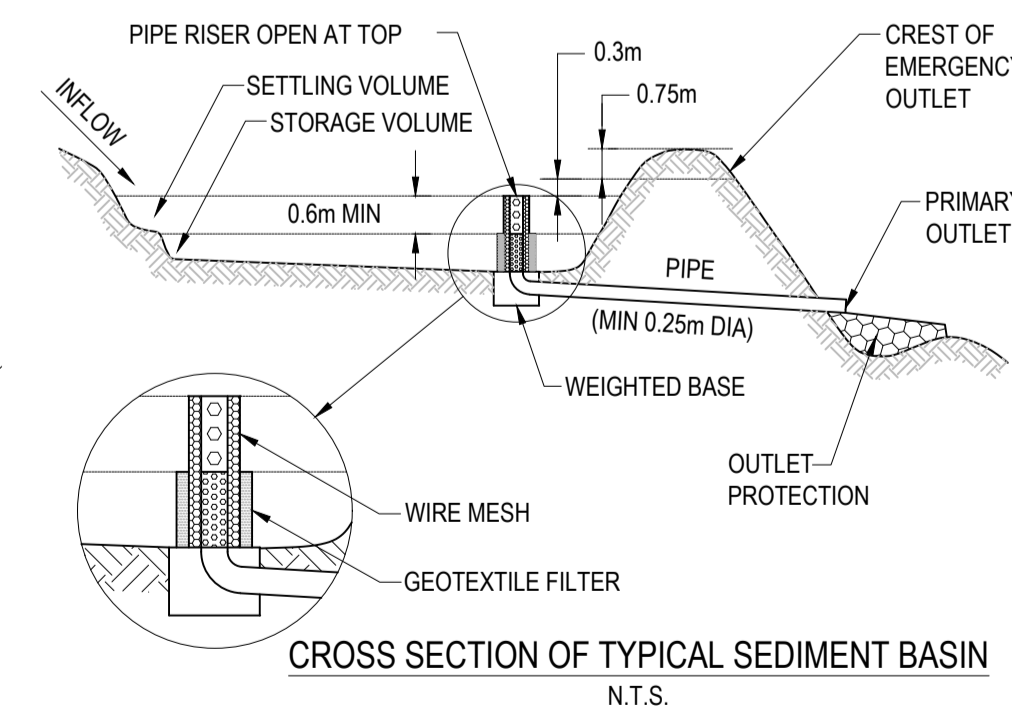
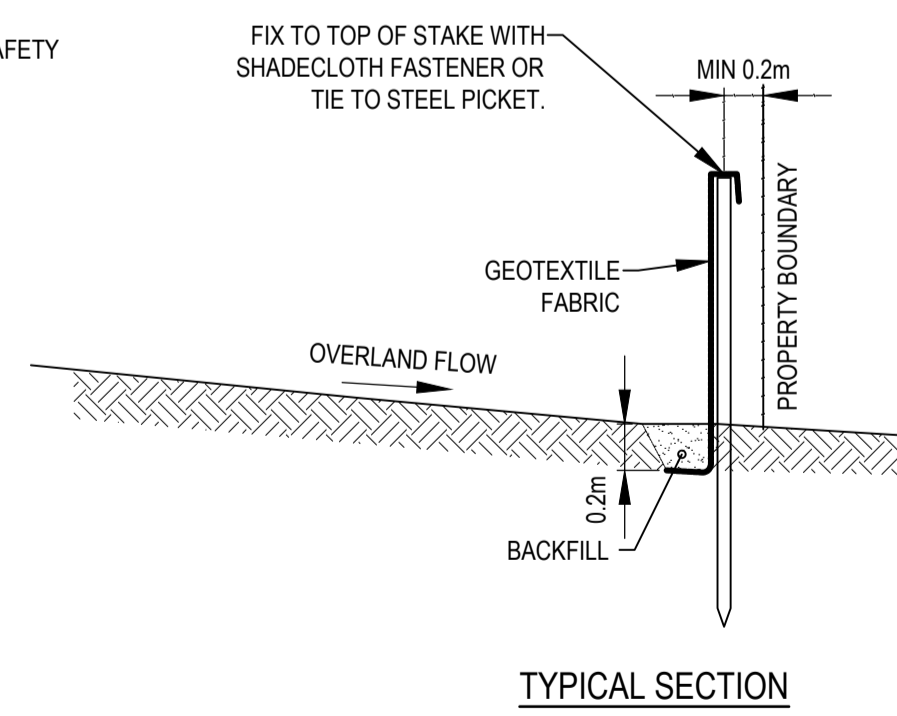
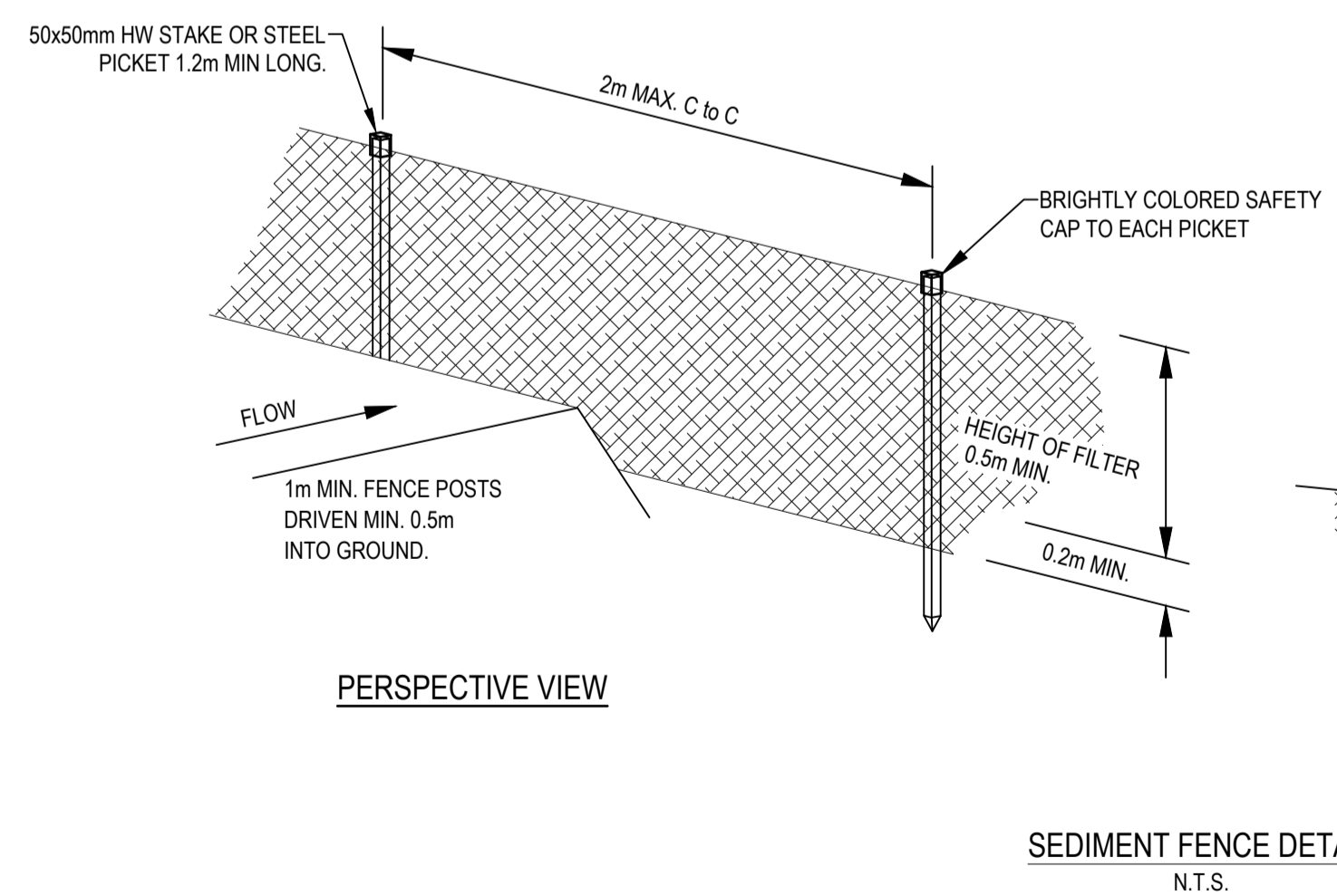
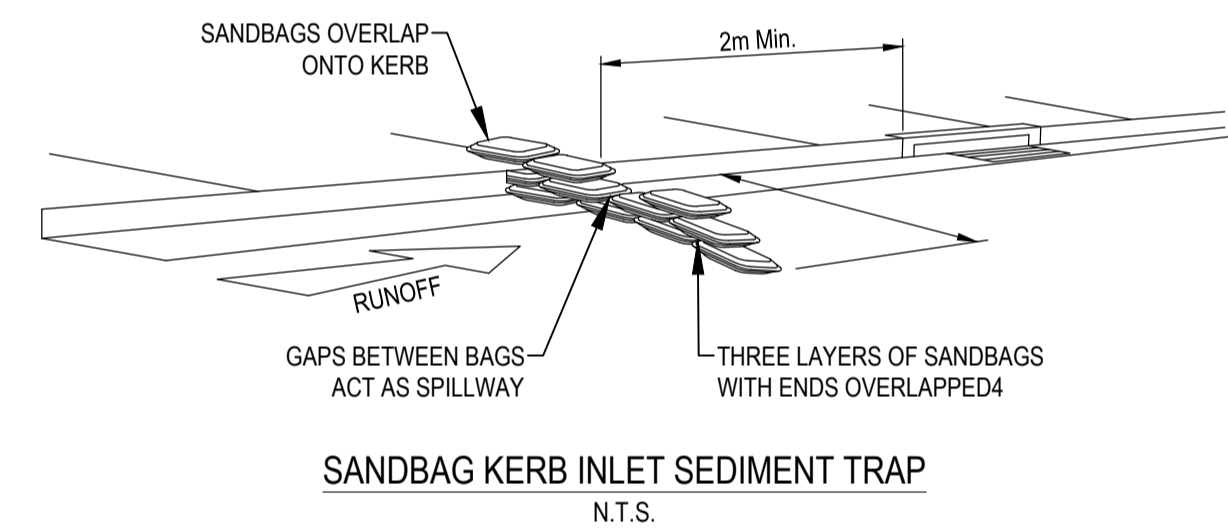
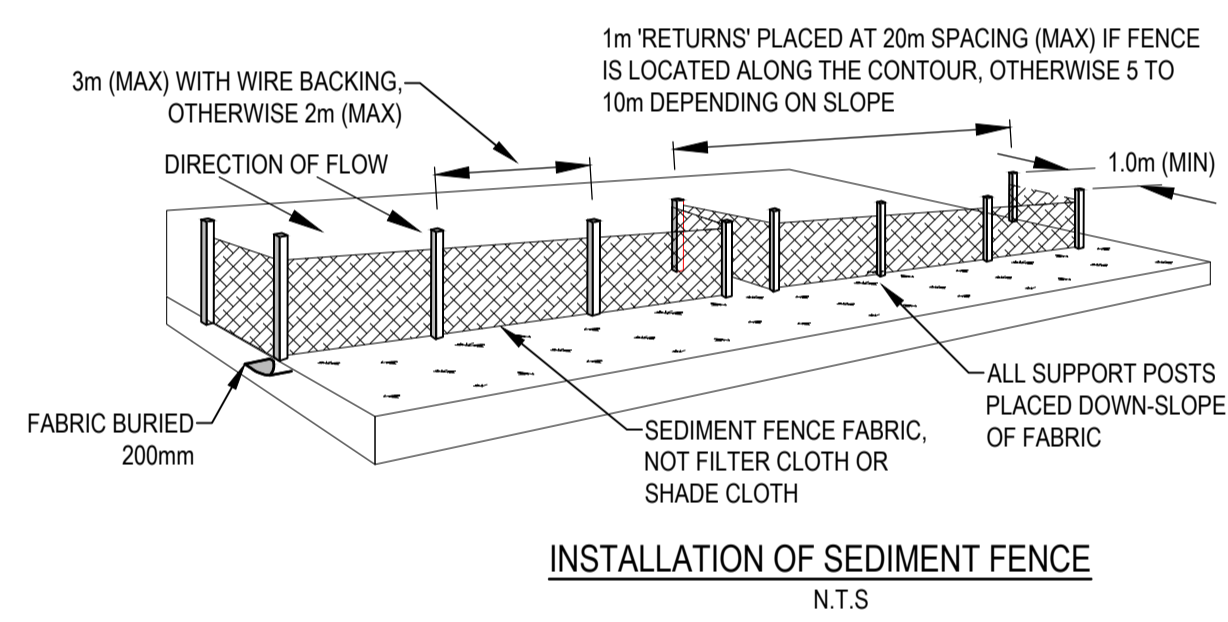
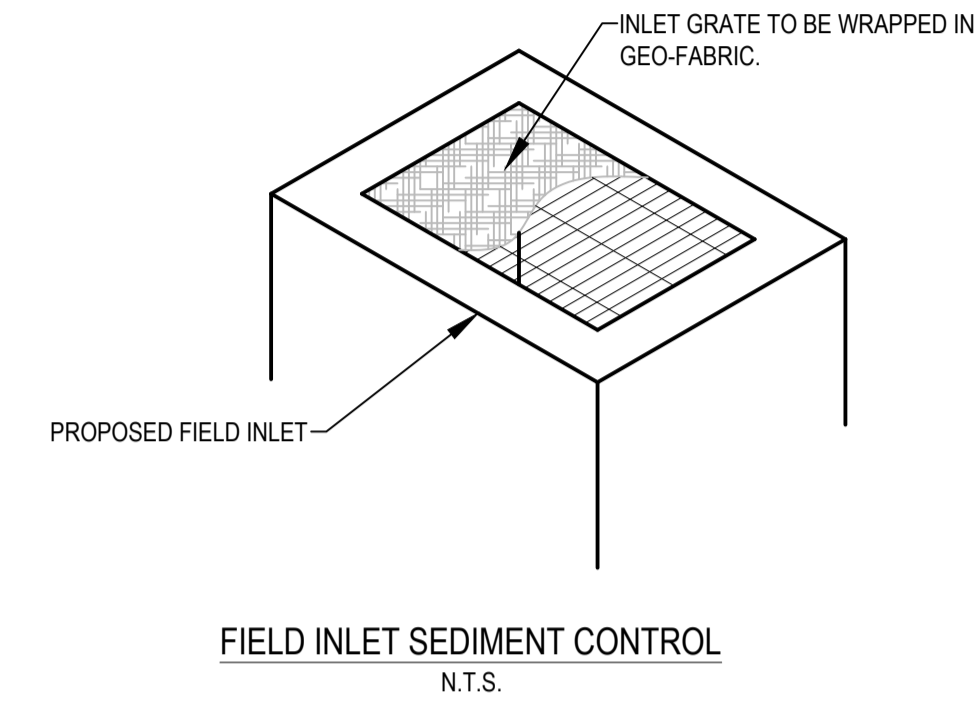
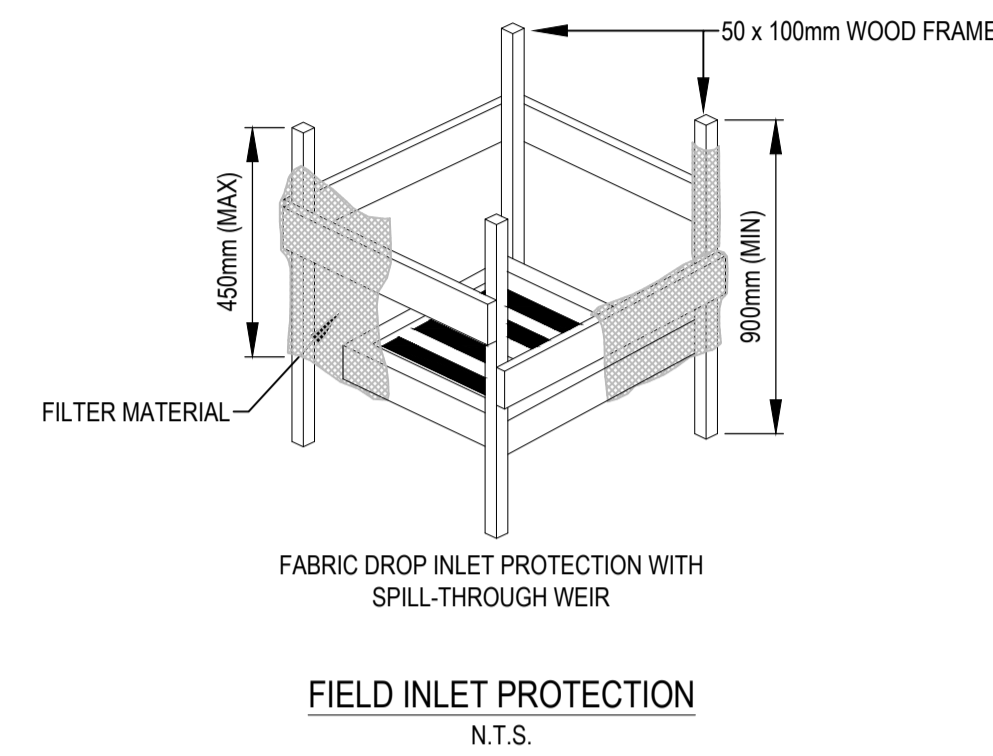
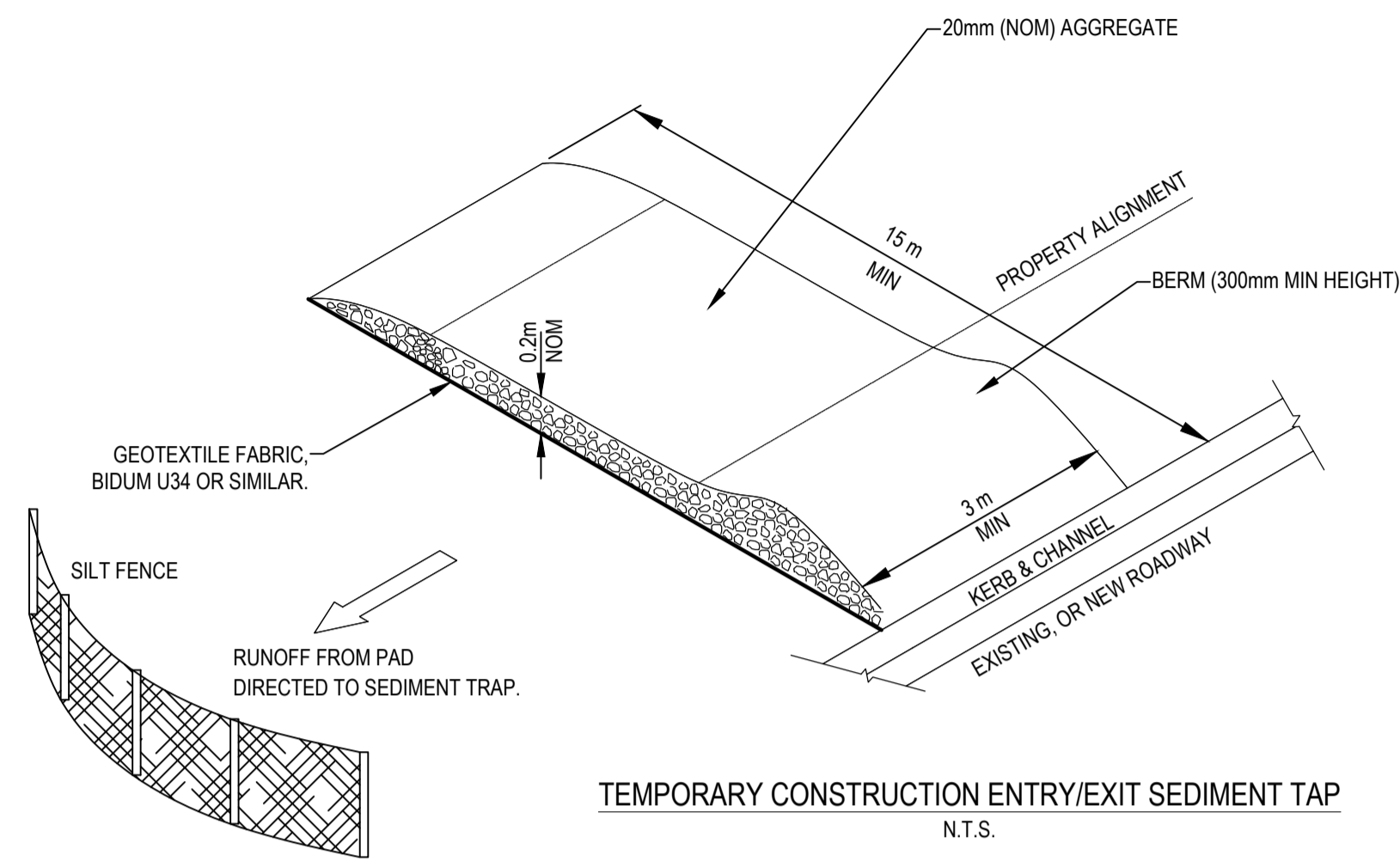
| | |
|----------------------------|------|
| DRAWN: | JDL |
| DESIGNED: | ATC |
| VERIFIED: | J.J. |
| APPROVED FOR TENDER: | J.J. |
| APPROVED FOR CONSTRUCTION: | J.J. |

MARSDEN PARK NEW PRIMARY SCHOOL

PROJECT
SEDIMENT & EROSION CONTROL PLAN

TITLE
FOR APPROVAL
 NOT FOR CONSTRUCTION

| | | | |
|------------|--------------|------------|-----|
| AS SHOWN | 43722 | CI-070-01 | B |
| SCALE @ A1 | PROJECT No | DRAWING No | REV |



| REV | DESCRIPTION | DRAWN | APPD | DATE |
|-----|-------------|-------|------|----------|
| B | SSD ISSUE | JDU | RET | 17.07.19 |
| A | SSD ISSUE | JDL | HHC | 02.07.19 |

NSW GOVERNMENT Education

NBRSARCHITECTURE.

ARCHITECT/CLIENT

WOOD & GRIEVE ENGINEERS

NOW PART OF Stantec

MARSDEN PARK NEW PRIMARY SCHOOL

PROJECT

SEDIMENT & EROSION CONTROL DETAILS

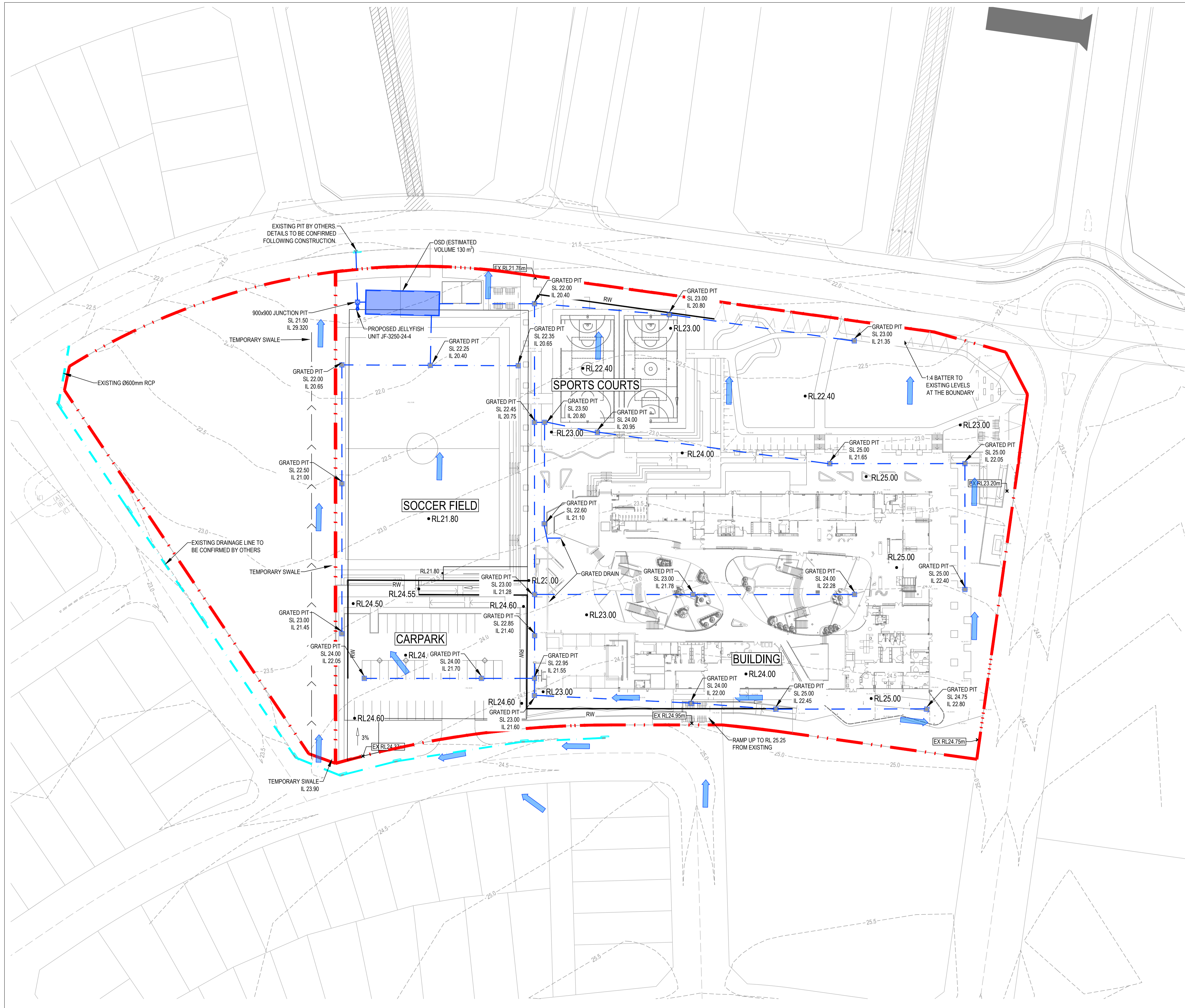
TITLE

FOR APPROVAL

NOT FOR CONSTRUCTION

AS SHOWN 43722 PROJECT No CI-076-01 B

SCALE @ A1 PROJECT No DRAWING No REV



LEGEND

- - - - - PROPOSED SITE BOUNDARY
- OVERLAND FLOW
- - - - - PROPOSED STORMWATER PIPE
- PROPOSED GRATED INLET PIT
- ⊗ PROPOSED JUNCTION PIT
- ▤ PROPOSED KERB INLET PIT
- - - - - EXISTING SURFACE CONTOUR & LABEL
- RLXX.XX PROPOSED LEVELS BY ARCHITECT
- - - - - 2m WIDE TEMPORARY SWALE

- NOTES:**
1. SITE SURVEY BASED ON RPS AUSTRALIA EAST PTY LTD DRAWING ACAD-PR144542_DET_190621(2007)REV C DATED 21 JUNE 2019.
 2. ADJOINING PROPERTIES EXISTING CONTOURS BASED ON ELARA STOCKLAND SITE PRECINCT 3 SCHOOL SITE SERVICE COORDINATION PLAN DATE 19 FEB 2019.
 3. ARCHITECTURAL LAYOUT BASED ON SITE PLAN 19154-A-WD-003 REV B. SITE LEVELS ARE BASED ON NBR5 ARCHITECTURA LSK01.



| REV | DESCRIPTION | DRAWN | APPD | DATE |
|-----|-------------|-------|------|----------|
| B | SSD ISSUE | JDL | RET | 17.07.19 |
| A | SSD ISSUE | JDL | HHC | 02.07.19 |

ARCHITECT/CLIENT

DRAWN: JDL
DESIGNED: ATC
VERIFIED: J.J.
APPROVED FOR TENDER: J.J.
APPROVED FOR CONSTRUCTION: J.J.

NSW Education
NBR5ARCHITECTURE.

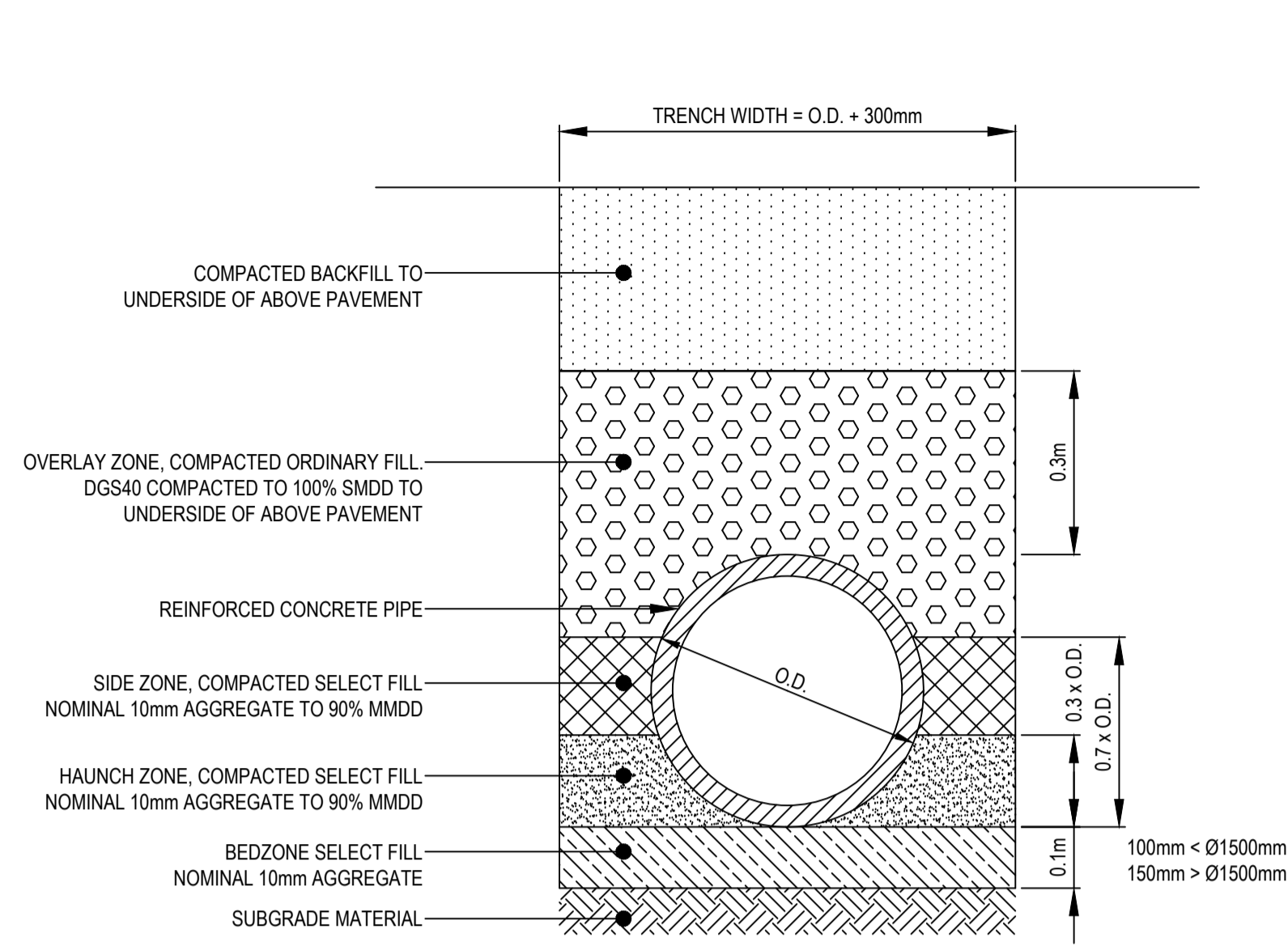
WOOD & GRIEVE ENGINEERS
NOW PART OF
Stantec

MARSDEN PARK NEW PRIMARY SCHOOL

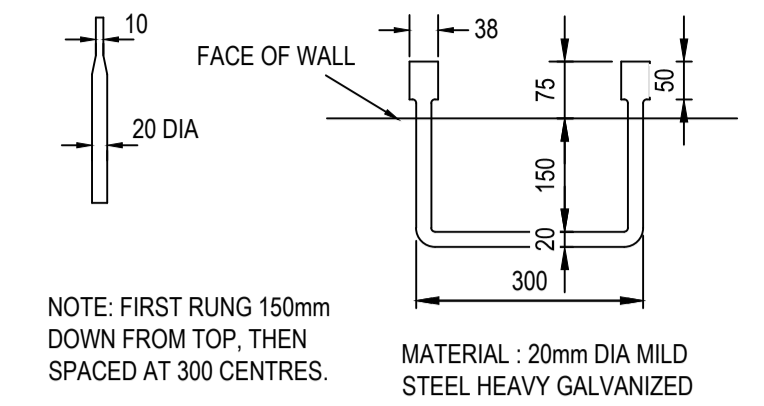
PROJECT
STORMWATER MANAGEMENT PLAN

TITLE
FOR APPROVAL
NOT FOR CONSTRUCTION

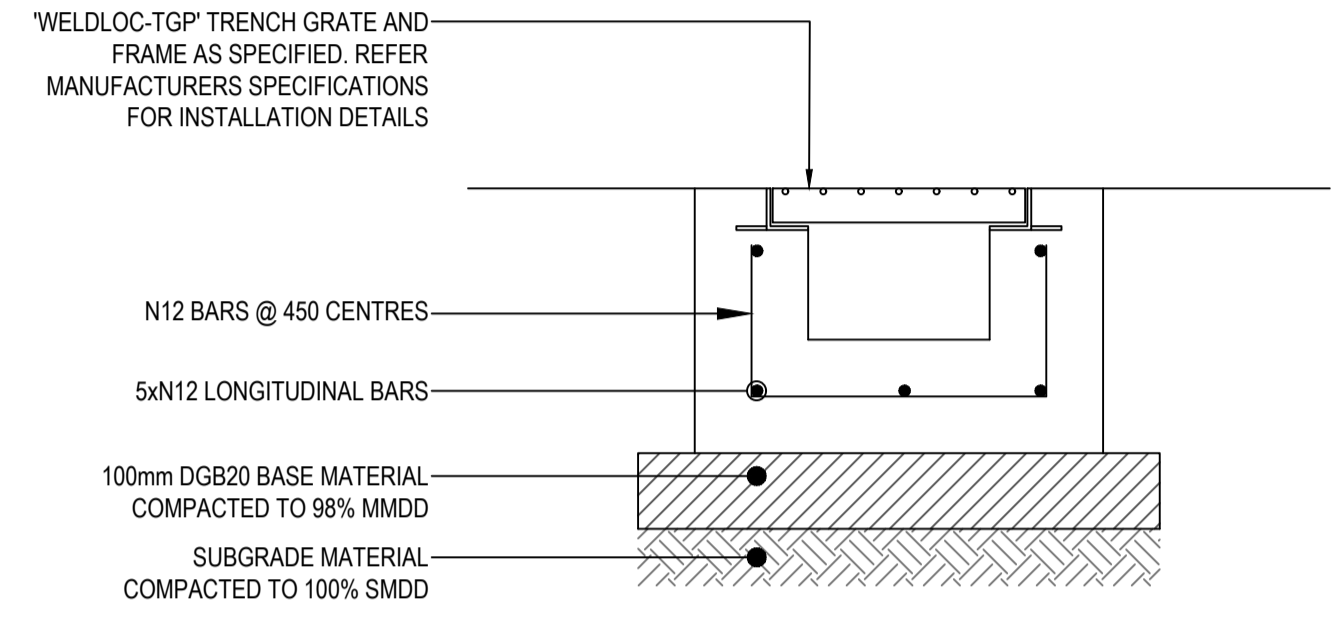
| | | | |
|------------|--------------|------------|----------|
| AS SHOWN | 43722 | CI-520-01 | B |
| SCALE @ A1 | PROJECT No | DRAWING No | REV |



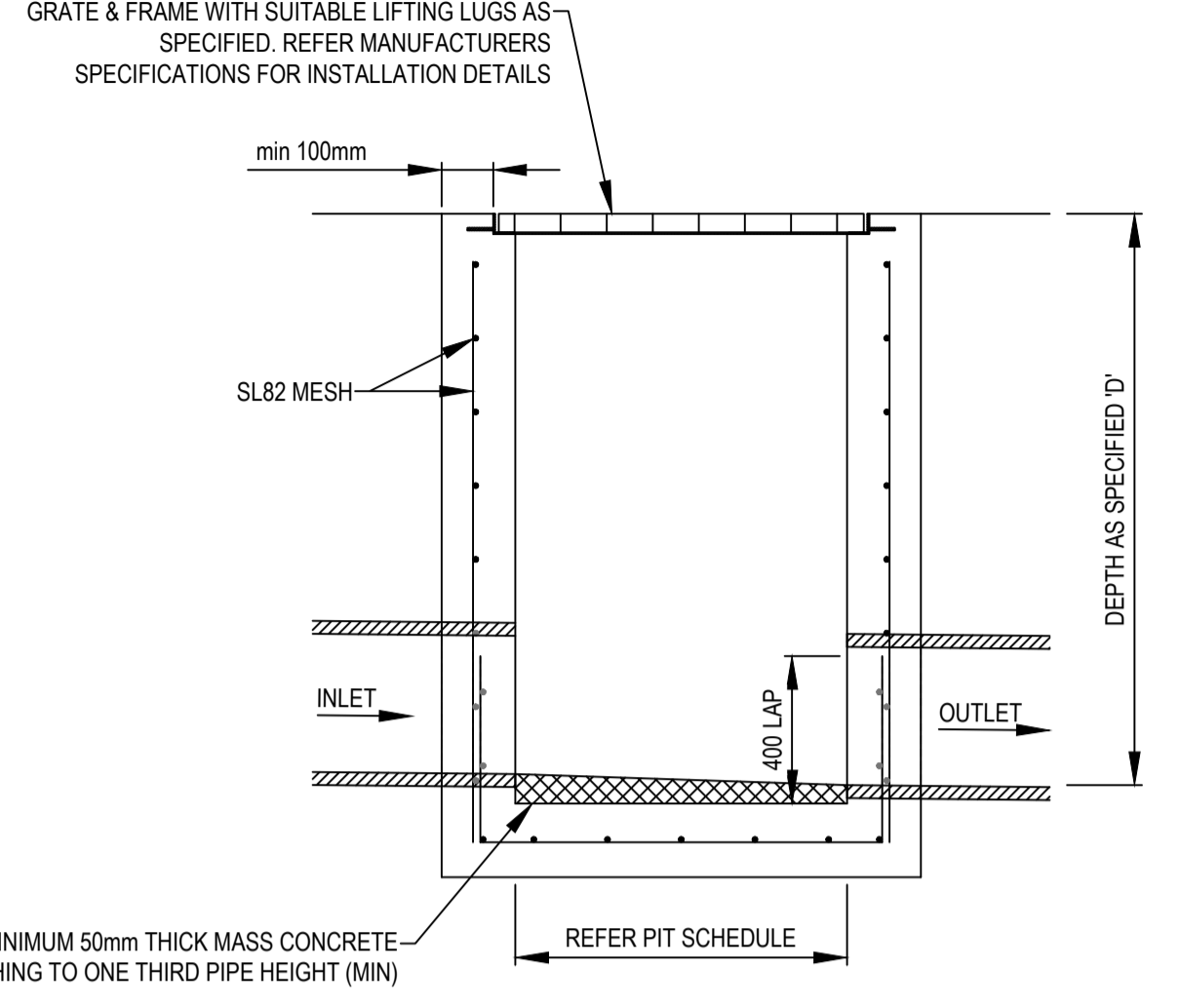
TYPICAL PIPE TRENCH DETAIL
SCALE 1:10



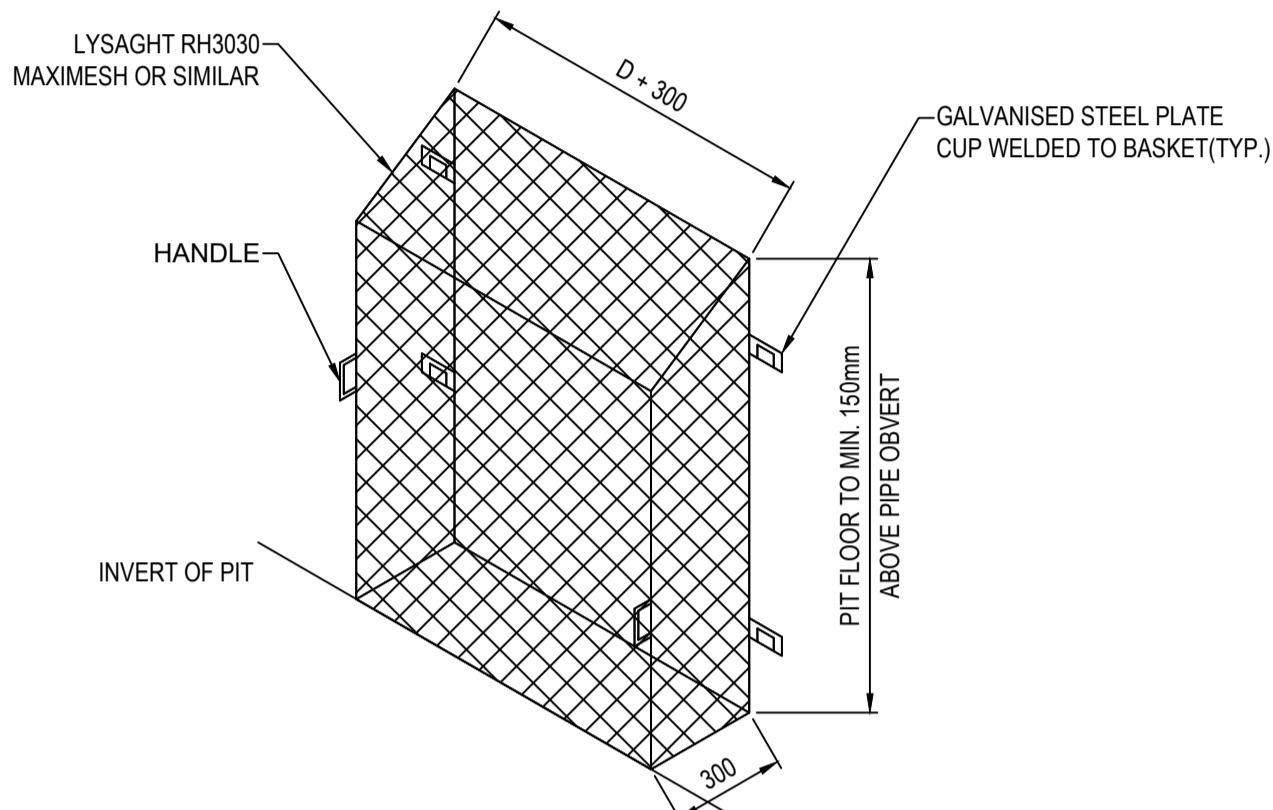
STEP IRONS FOR DRAINAGE PITS
N.T.S.



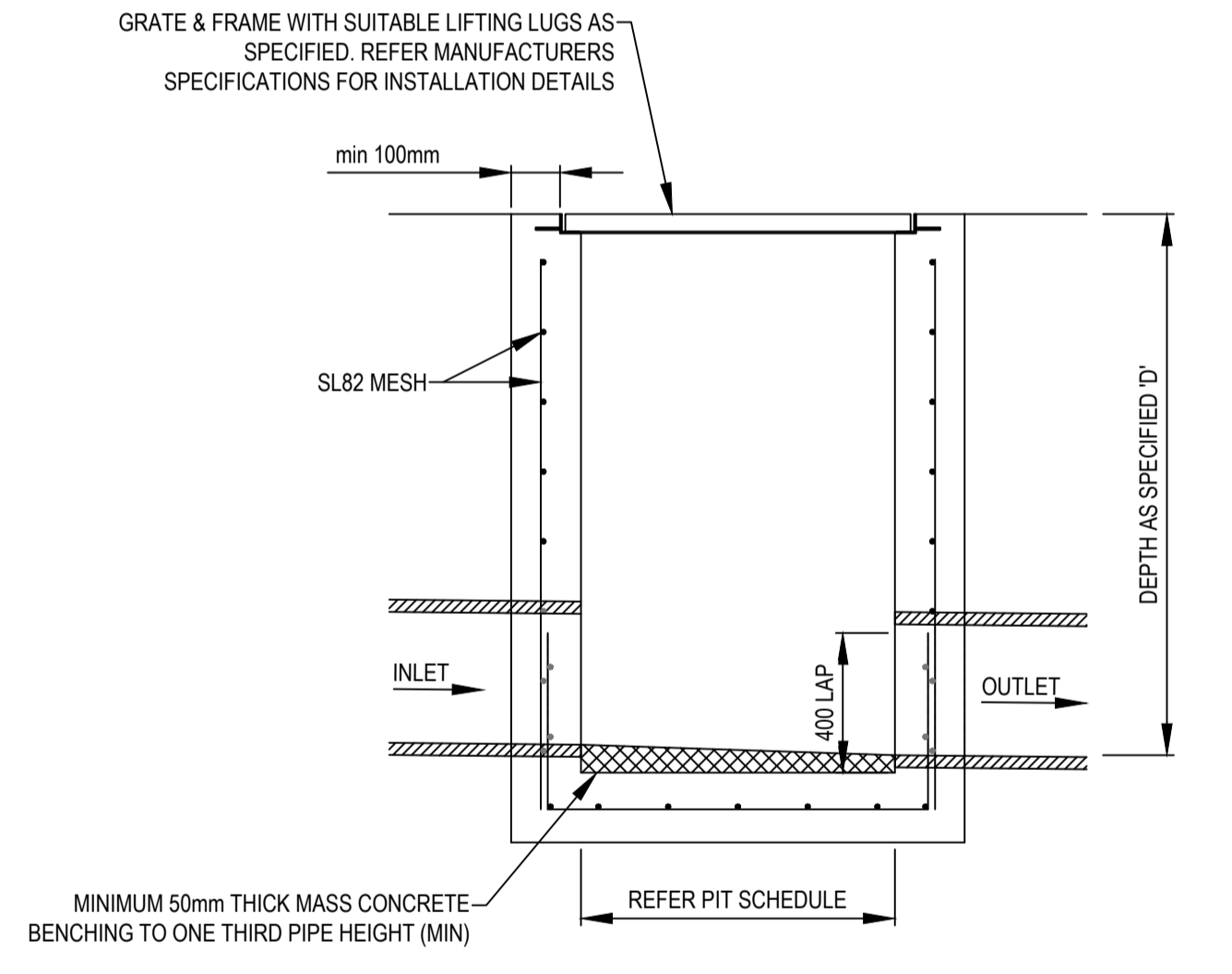
GRADED TRENCH DRAIN
(SCALE 1:10)



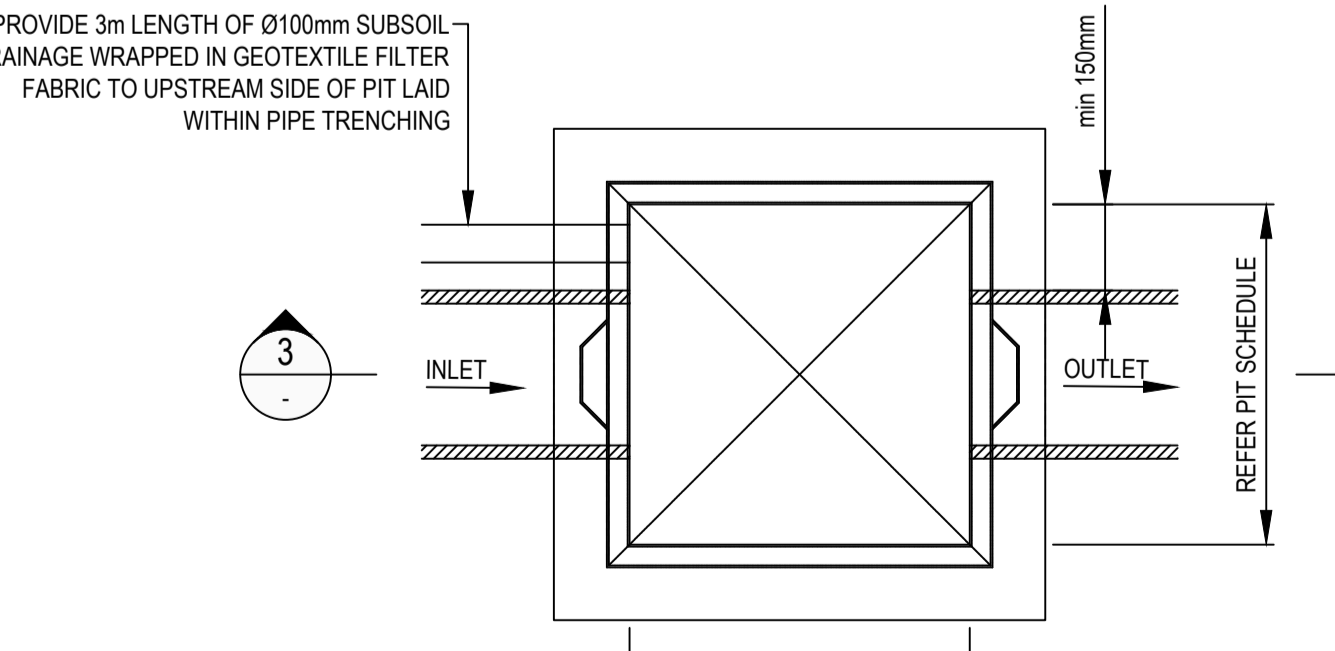
SECTION 3
SCALE 1:20



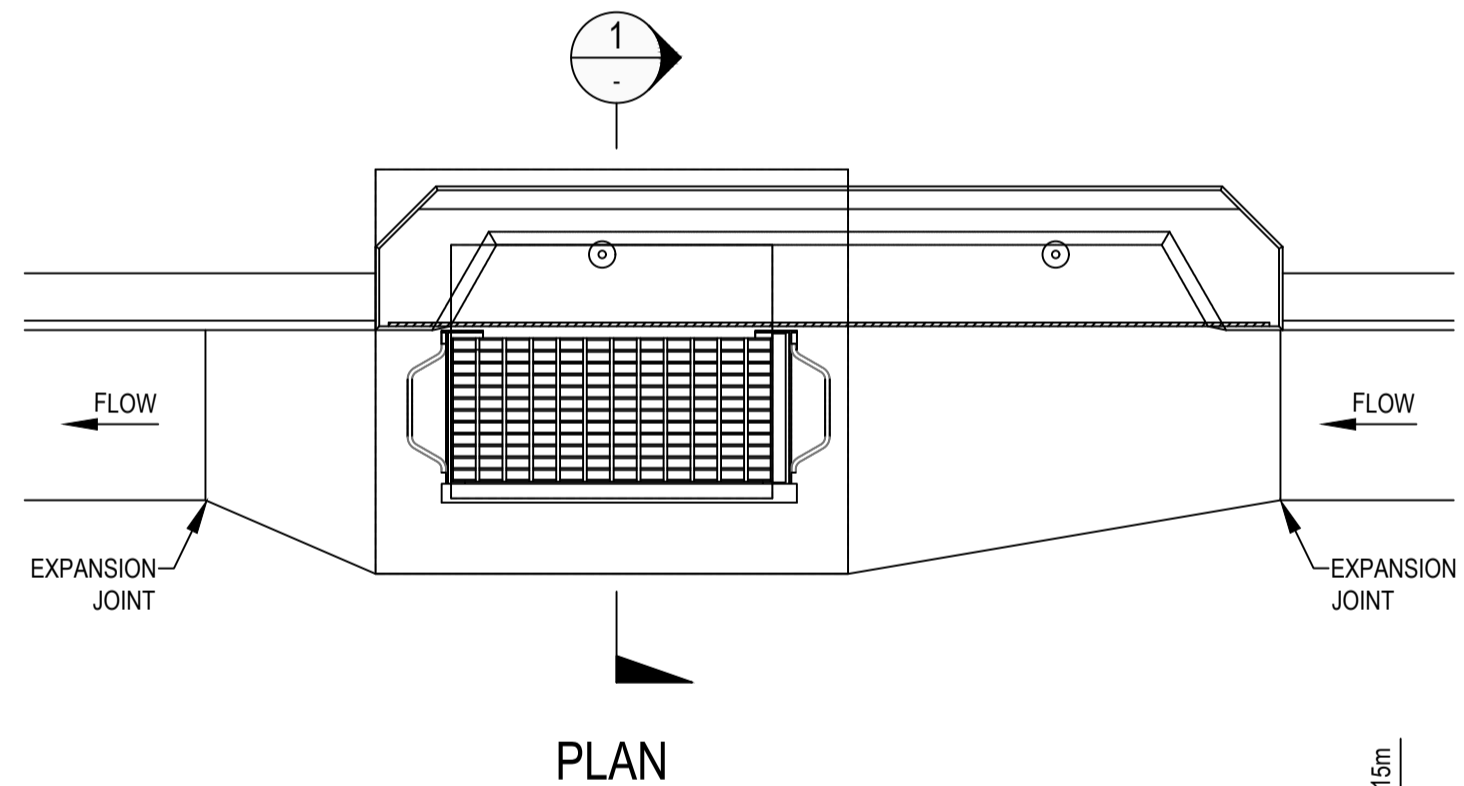
SCREEN MESH DETAIL
N.T.S.



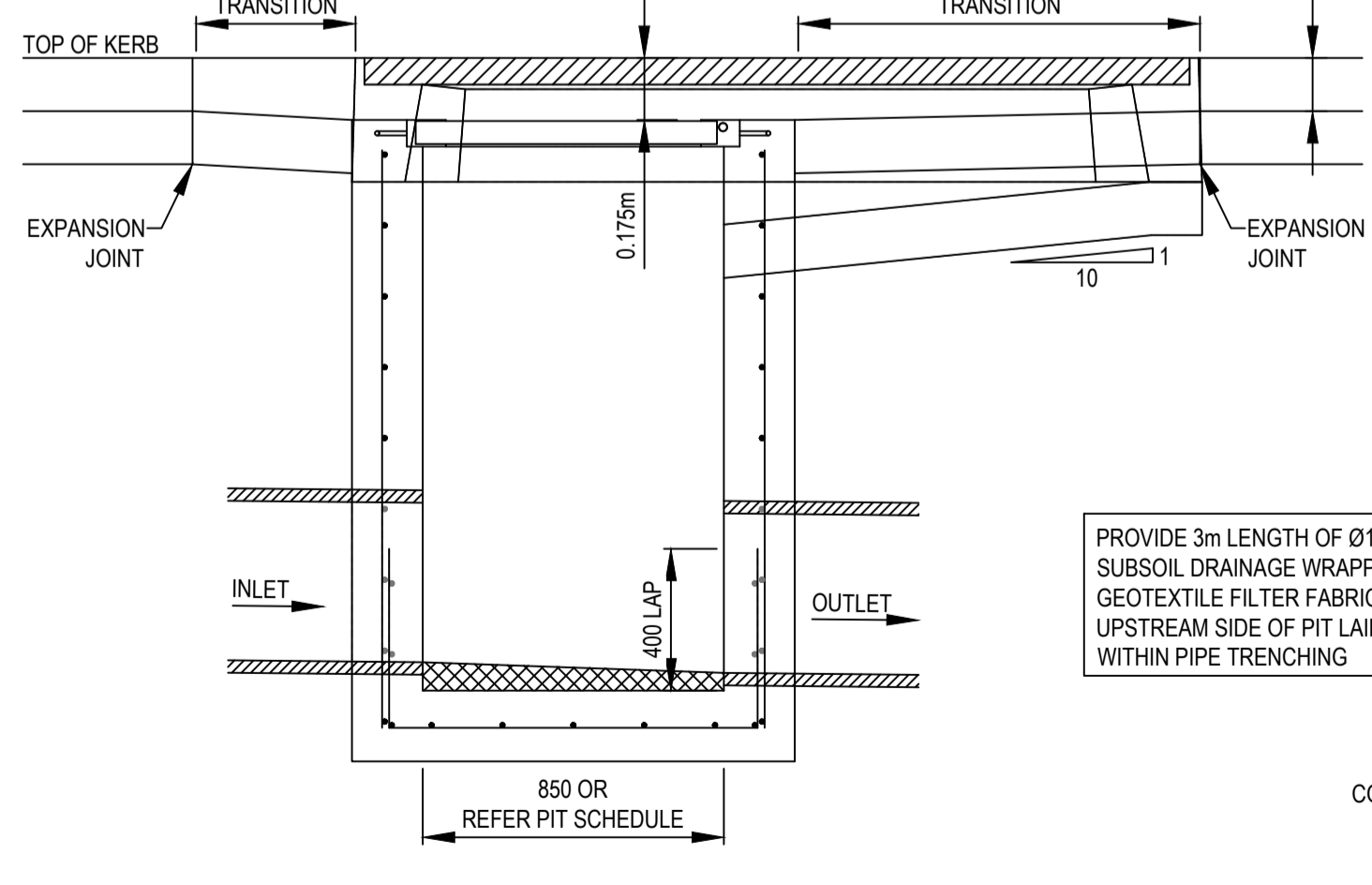
SECTION 3
SCALE 1:20



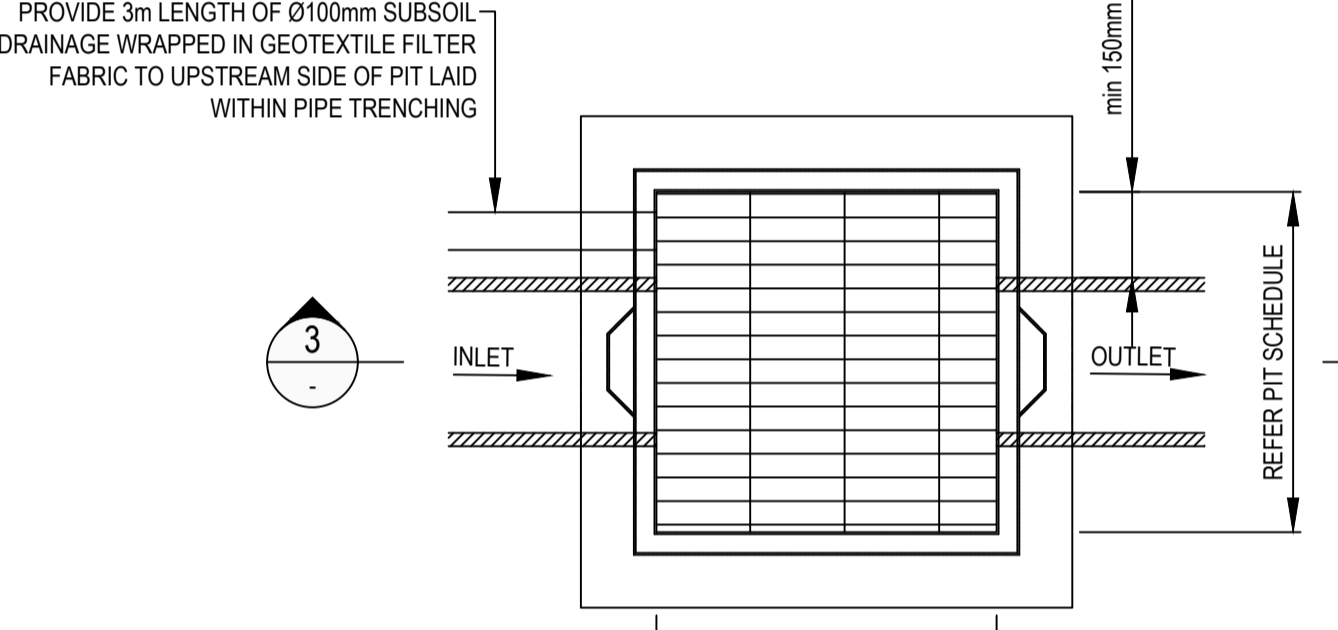
JUNCTION PIT PLAN
SCALE 1:20



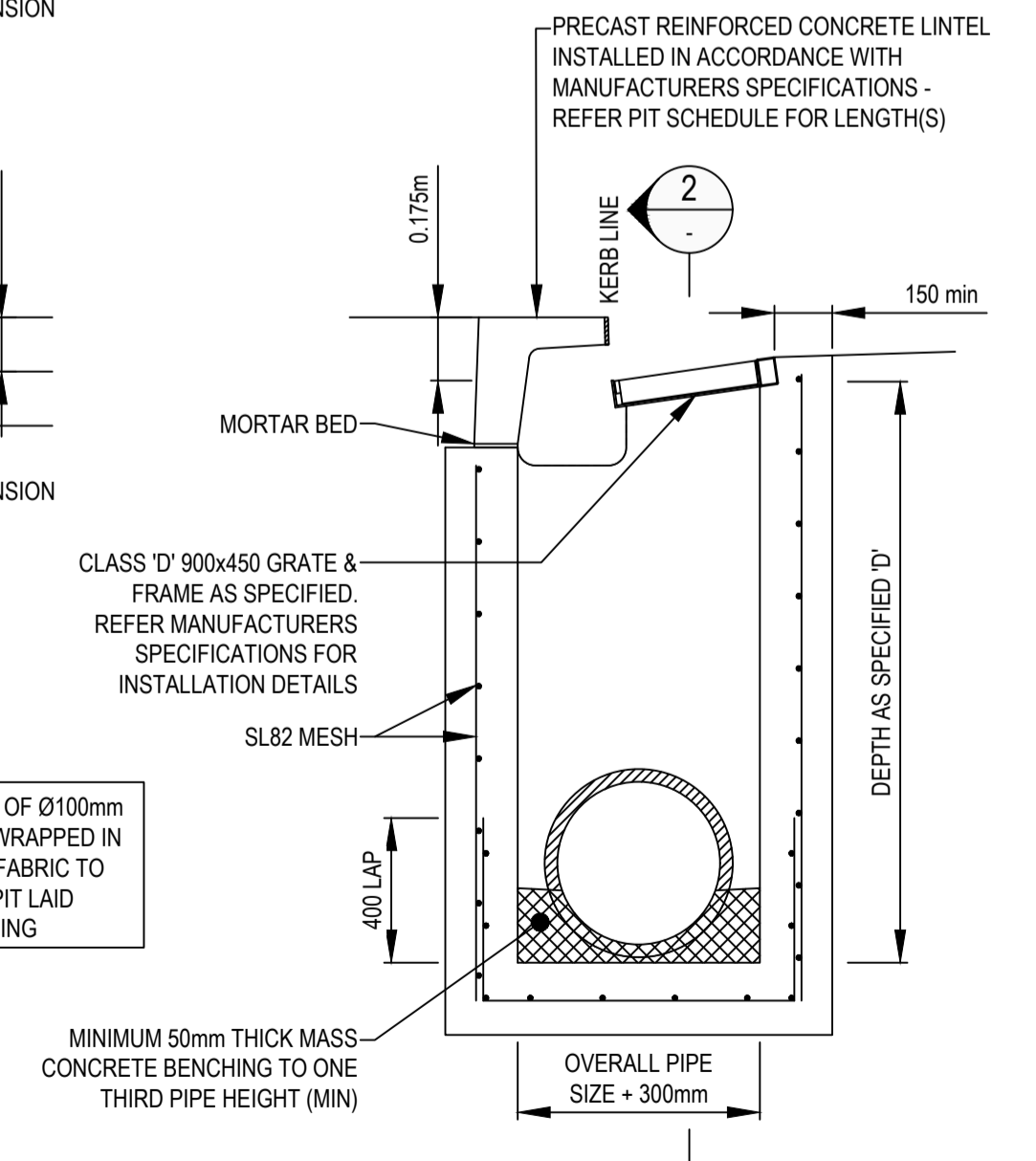
PLAN



SECTION 2
SCALE 1:20



GRATED PIT PLAN
SCALE 1:20



SECTION 1
SCALE 1:20

| | | | | | | |
|-------|-----|-----|-----|-----|-----|-----|
| 1:50 | 1 | 0.5 | 0 | 1 | 2 | A1 |
| 1:100 | A3 | | | | | |
| 1:20 | 0.2 | 0 | 0.2 | 0.4 | 0.6 | 1 |
| 1:40 | A3 | | | | | |
| 1:10 | 0.1 | 0 | 0.1 | 0.2 | 0.3 | 0.4 |
| 1:20 | A3 | | | | | |

| | | | | |
|-----|-------------|-------|------|----------|
| REV | DESCRIPTION | DRAWN | APPD | DATE |
| B | SSD ISSUE | JDU | RET | 17.07.19 |
| A | SSD ISSUE | JDL | HHC | 02.07.19 |

NSW Education
NBR ARCHITECTURE.
ARCHITECT/CLIENT

WOOD & GRIEVE ENGINEERS
NOW PART OF
Stantec

| | |
|----------------------------|--------|
| DRAWN: | JDL |
| DESIGNED: | ATC |
| VERIFIED: | - J.L. |
| APPROVED FOR TENDER: | - J.L. |
| APPROVED FOR CONSTRUCTION: | - J.L. |

MARSDEN PARK NEW PRIMARY SCHOOL

PROJECT
STORMWATER DRAINAGE DETAILS

TITLE
FOR APPROVAL
NOT FOR CONSTRUCTION

| | | | |
|------------|------------|------------|-----|
| AS SHOWN | 43722 | CI-526-01 | B |
| SCALE @ A1 | PROJECT No | DRAWING No | REV |