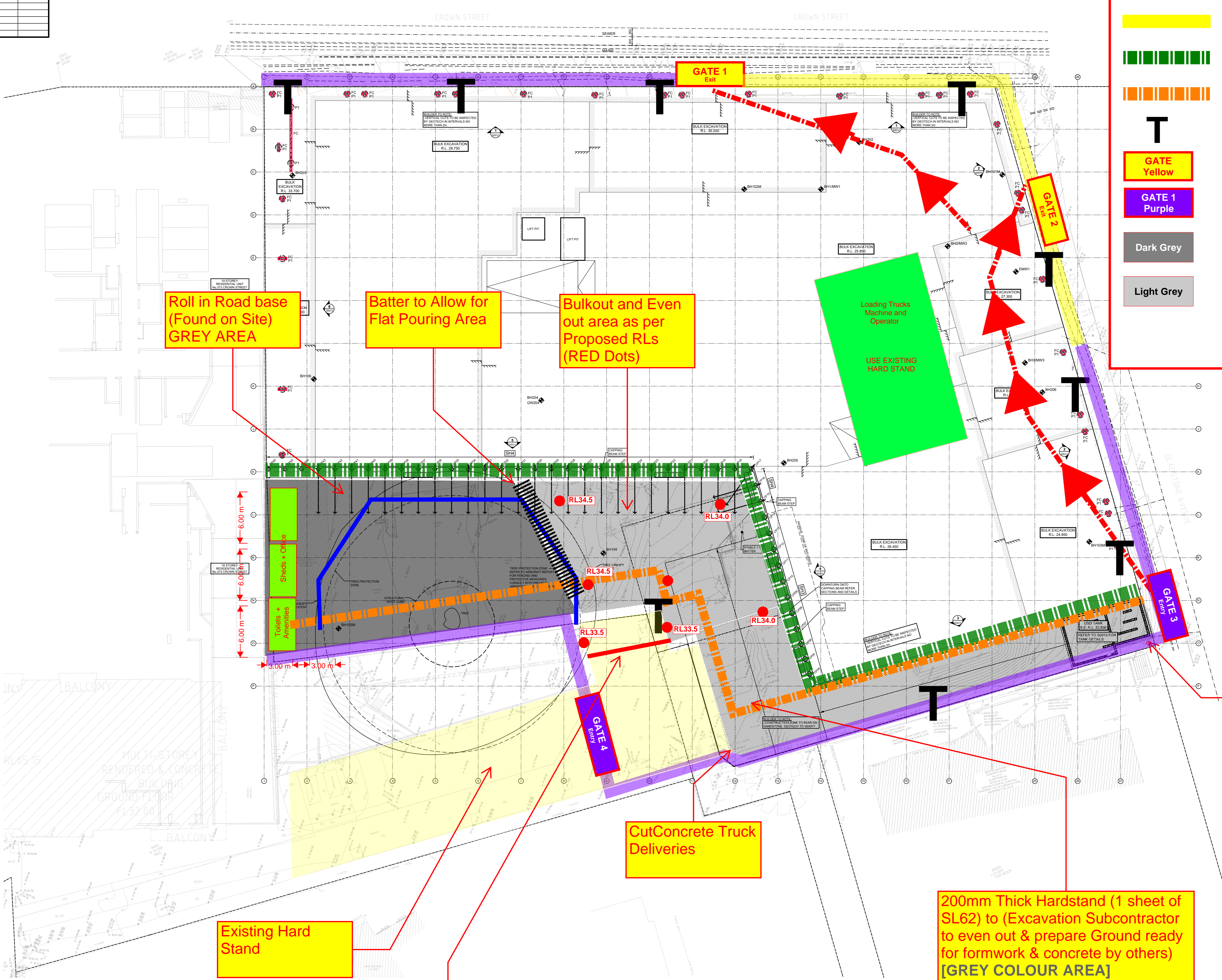


Rev	Date	DP Full Name	Reg No

REGULATED DESIGN RECORD
 Project Address: 2-4 Gladstone Ave & 357-363 Crown St
 Project Title: Proposed Mix Used Development
 Consent No: DA [] Body: [] N/A
 Drawing Title: Shoring Plan
 Drawing No: 7219-S001
 Rev Date DP Full Name Reg No

Not Declared



LEGEND

- New Hoarding
- Existing Hoarding
- Handrail
- Temp Power (By Electrician)
- T Water Point (By Plumber)
- GATE
Yellow Existing Gate
- GATE 1
Purple New Gate
- Compacted Road Base
- Hard Stand (200mm thick, 1 sheet of SL62)

- ### SHORING PLAN
- 1:100
1. SERVICE LOCATION REPORT BY OZ DETECT - REFER JOB NO.250328A
- ### SHOTCRETE/PIILING PROCEDURE
- PLACE BOUNDARY PILING TO APPROVED METHODS
 - INSTALL CAPPING BEAM
 - EXCAVATE TO TOP ANCHOR LEVEL AND DRILL AND EPOXY GALVANISED BARS INTO PILES AS NOTED ON THE SHORING WALL DETAILS
 - HOLD POINTS FOR INSPECTION AT EVERY 1500mm INTERVAL TO ASSESS ROCK CONDITION AS REQUIRED BY GEOTECHNICAL ENGINEER.
 - PLACE REINFORCEMENT & APPLY SHOTCRETE TO FACE OF PILES IN MAXIMUM 1500mm VERTICAL SECTIONS
 - PLACE ANCHORS/WALERS, REPEAT PROCESS AND CONTINUE EXCAVATION TO SECOND ANCHOR
 - SHOTCRETING SHALL COMPLY WITH RELEVANT AUSTRALIAN STANDARD AND AS3600-2018. MINIMUM Fc TO BE 32 MPa
- ### PIILING NOTES
- REFER TO GEOTECHNICAL REPORT G771-3, DATED 25TH JUNE, 2025 BY FOUNDATION EARTH SCIENCES.
 - THE CONTRACTOR MUST BE FAMILIAR WITH GROUND CONDITIONS PRIOR TO THE COMMENCEMENT OF ANY WORK. IF NECESSARY, THE CONTRACTOR IS TO FURTHER CONSULT THE GEOTECHNICAL ENGINEER.
 - THE CONTRACTOR IS TO CARRY OUT ALL NECESSARY SERVICES SEARCHES OF NEIGHBOURING PROPERTIES PRIOR TO COMMENCEMENT OF WORK.
 - PIILING TO BE CARRIED OUT IN ACCORDANCE WITH AS2159 PILING CODE.
 - TOLERANCES, SETOUT AND STRAIGHTNESS TO BE IN ACCORDANCE WITH AS2159. ORIENTATION OF REINFORCEMENT CAGES TO ALLOW PLACEMENT OF ANCHORS WITHOUT CUTTING MAIN VERTICAL BARS.
 - LEVELS OF ALL SERVICES TO BE VERIFIED ON SITE PRIOR TO ANY ANCHOR PLACEMENT. THE ENGINEER IS TO BE ADVISED IF ANY CLASHES OCCUR.
 - ALL CONCRETE PILES TO BE GRADE N32 (32 MPa) U.N.O. COVER TO TIES TO BE 55mm. ALL CONCRETE TO BE PLACED IN AN APPROVED MANNER TO PREVENT SEGREGATION DURING PLACEMENT. TREMIE-MIX CONCRETE TO BE USED.
 - THE PILING CONTRACTOR MUST LOG ALL PILE INVERT LEVELS TO ENSURE MINIMUM INVERT LEVELS ARE ACHIEVED. GEOTECHNICAL ENGINEER TO VERIFY ALL BEARING MATERIAL.
 - THE CONTRACTOR IS TO ACCOUNT FOR ALL GROUND CONDITIONS AND WATER TABLE LEVELS REFERRED TO IN THE GEOTECHNICAL ENGINEER'S REPORT. APPROPRIATE MEASURES TO BE TAKEN TO ENSURE PROPER PILE PLACEMENT.
- ### ANCHOR NOTES
- REFER TO ELEVATIONS FOR SAFE WORKING LOADS. SAFE WORKING ANCHOR LOADS ARE UNFACTORED AND ARE PROVIDED FOR ANCHORING CONTRACTOR'S DESIGN AND CONSTRUCT ANCHORING PACKAGE. ANCHORING CONTRACTOR MUST CONFIRM BONDED LENGTHS TO SATISFY ANCHOR LOADS FOR THE ENCOUNTERED GEOTECHNICAL SITE CONDITIONS.
 - THE CONTRACTOR IS TO CARRY OUT A SERVICES SEARCH PRIOR TO COMMENCEMENT OF WORK. IF CLASHES OCCUR, THE CONTRACTOR IS TO NOTIFY THE ENGINEER IMMEDIATELY
 - THE CONTRACTOR IS TO ENSURE ANCHORS HAVE SUITABLE DECLINATION TO AVOID CLASHES WITH OTHER ANCHORS
 - THE CONTRACTOR IS TO ENSURE PERMISSION HAS BEEN OBTAINED PRIOR TO ANCHORING BEYOND THE BOUNDARY.
 - THE CONTRACTOR SHALL TEST ANCHORS TO 125% OF SAFE WORKING LOAD. TEST RECORDS ARE TO BE MADE AVAILABLE TO MA ENGINEERS.
 - THE CONTRACTOR IS TO INCREASE ANCHOR SAFE WORKING LOAD ACCORDING TO ANCHOR DECLINATION.
 - ANCHORS TO BE APPROVED SUPERSTRAND TENDONS, FULLY GROUTED OVER FULL BOND LENGTH IN APPROVED MATERIAL. REFER TO THE GEOTECHNICAL ENGINEER'S REPORT.
 - ANCHOR HEAD DETAILS, BEARING PLATES AND FIXING OF WALERS TO PILES TO BE APPROVED BY MA ENGINEERS PRIOR TO FABRICATION.
 - ANCHORS TO BE DE-STRESSED AND REMOVED (IF DIRECTED BY CLIENT) UPON ENGINEER'S APPROVAL TO DO SO.

LEGEND

	SHORING PILE
	Ø750 PILE UNDER FUTURE COLUMN. REFER TO DETAIL ON S0014
	TEMPORARY ANCHOR LOCATION
	FC / FW FUTURE COLUMN / FUTURE WALL
	SH... SHORING WALL TYPE - REFER TO DETAILS ON S0014
	CB... CAPPING BEAM TYPE - REFER TO DETAILS ON S0014
	T.O.C.B. TOP OF CAPPING BEAM
	BH TEST PIT, REFER TO GEOTECHNICAL REPORT
	PILE NUMBER - NOMINAL

THE CONTRACTOR IS TO CARRY OUT A SERVICES SEARCH PRIOR TO COMMENCEMENT OF WORK. IF CLASHES OCCUR, THE CONTRACTOR IS TO NOTIFY THE ENGINEER IMMEDIATELY

PIILING IS DIAGRAMMATIC ONLY - DO NOT SCALE. REFER TO DETAILS FOR PILE CONFIGURATION

WRITTEN PERMISSION MUST BE OBTAINED FROM ADJOINING LAND AND PROPERTY OWNERS WHERE ANCHORING WORKS CROSS ANY ALLOTMENT BOUNDARIES

REFER TO GEOTECHNICAL MONITORING PLAN BY EI AUSTRALIA REPORT No. E23243.G06 DATED 21 AUGUST 2024 CLAUSE 16 FOR MONITORING PROCEDURES PRIOR TO COMMENCEMENT OF WORKS AND DURING EXCAVATION.

BUILDER INSPECTION / TEST HOLD POINTS

1. Pile logs have been forwarded to MA Engineers.	<input type="checkbox"/>
2. Geotechnical engineer has inspected representative pile holes and confirmed the bearing material - report has been forwarded to MA Engineers	<input type="checkbox"/>
3. Certification of all reinforcement (by S.R.I.A.) has been forwarded to MA Engineers prior to site attendance / inspection.	<input type="checkbox"/>
4. Concrete test results have been provided to MA Engineers prior to full excavation.	<input type="checkbox"/>
5. Anchor load tests have been carried out and certification forwarded to MA Engineers.	<input type="checkbox"/>
6. Hold points for inspection of pile cages.	<input type="checkbox"/>
7. Hold points for inspection of capping beams.	<input type="checkbox"/>
8. Hold points for inspection of shotcrete.	<input type="checkbox"/>

SM-01 [Rev 5] Site Management Plan Demo/Ex

REV.	AMENDMENT	BY	DATE	REV.	AMENDMENT	BY	DATE
A	ISSUED FOR FINAL REVIEW	RE	27.06.25				
P4	PRELIMINARY ISSUE	RE	19.06.25				
P3	PRELIMINARY ISSUE	RE	20.05.25				
P2	PRELIMINARY ISSUE	ST	08.05.25				
P1	PRELIMINARY ISSUE	RE	24.04.25				

Copyright Mance Arraj Engineering Pty. Ltd. as at date of issue.
 Mance Arraj Engineering Pty Ltd is the owner of the copyright subsisting in these drawings and all related designs and specifications. These drawings and any related designs and specifications must not be reproduced or used in whole or in part nor may the ideas, concepts or information contained in these drawings and related design and specifications be used (in any way whatsoever) except in accordance with the agreement between Mance Arraj Engineering Pty Ltd and the client.
 THIS DRAWING IS NOT TO BE USED FOR CONSTRUCTION UNLESS ENDORSED BELOW
 Responsible Person's Signature: _____ Date: _____
 PHILIP MANCE BE ME Aust CP Eng NER (STRUCTURAL)

MANCE ARR AJ
 CIVIL & STRUCTURAL ENGINEERS
 First Floor, 278-282 Church Street, Parramatta
 P.O. Box 2355, North Parramatta NSW 1500
 Ph. 02 8897 8600 www.mancearraj.com.au

PROJECT
 PROPOSED MIX USED DEVELOPMENT
 2-4 GLADSTONE AVE &
 357-363 CROWN ST, WOLLONGONG

DRAWING TITLE
 SHORING PLAN
 OVERALL

ISSUE FOR FINAL REVIEW			
DESIGNED J.R.	PROJECT NUMBER	CHECKED P.M.	ISSUE
	7219		A
DATUM	DRAWING NUMBER	SCALE	
	S0011	1:200	AO