

8 May 2019

David Gibson

Department of Planning and Environment
320 Pitt Street
SYDNEY, NSW, 2000
david.gibson@planning.nsw.gov.au

Dear David,

**LETTER OF CONFIRMATION OF ENGAGEMENT - HERITAGE INTERPRETATION STRATEGY/PLAN
FOR NIHON UNIVERSITY (FORMER NEWCASTLE COURTHOUSE), 9 CHURCH STREET,
NEWCASTLE / REF: SSD 9787**

City Plan Heritage (CPH) has been engaged by DWP Australia Pty Ltd on behalf of Nihon University to provide professional heritage consultancy services in relation to the preparation of a Heritage Interpretation Plan for the Nihon University, located at 9 Church Street, Newcastle (subject site).

It is our understanding that a Heritage Interpretation Plan is required to be prepared in accordance with the requirements of the SEARS for redevelopment of the subject site (SSD 9787), which details the following:

Include an interpretation plan prepared in accordance with the Heritage Division publication 'Interpreting Heritage Places and Items Guidelines' (2005) and submit it for approval to the Heritage Council of NSW (or delegate) prior to Government certification. The interpretation plan must detail how information on the history and significance of Newcastle Court House will be provided for the public, and make recommendations regarding public accessibility, signage and lighting. The plan must identify the types, locations, materials, colours, dimensions, fixings and text of interpretive devices that will be installed as part of this project.

CPH has been provided with a number of background documents detailing the history of the site, which will be used in the preparation of the Heritage Interpretation Plan in a timely manner in response to the above SEARS requirement included as part of specific matter 8 - Heritage.

The tasks that will be carried out as part of the Interpretation Plan will include a review of the history and significance of a site and providing policies, strategies and advice for all the ways of adequately interpreting the development history of the former Newcastle Courthouse and its role in the provision of law and justice in the Hunter region since 1892 as well as the earlier developments on and in the context of its site.

The Plan, based on research and analysis, will formulate the strategy for heritage interpretation and identify the key historical themes, storylines and audiences, and provide recommendations on interpretive media appropriate to communicate the significance of the former Courthouse. The Heritage Interpretation Plan will also include practical and specific implementation information identifying the types, locations, materials, colours, dimensions, fixings and text of interpretive devices that will be installed as part of this project. Example of appropriate heritage interpretation devices, signs and media will be provided to guide the second stage (implementation and manufacturing) of the recommended interpretive media/actions.

The Interpretation Plan will be prepared in accordance with the heritage management guidelines outlined in The Burra Charter: *Australia ICOMOS Charter for Places of Cultural Significance, 2013* and relevant publications and guidelines produced by the Heritage Division of the NSW Office of Environment & Heritage (OEH) including but not limited to *Interpreting Heritage Places and Items (2005)* and *Heritage Interpretation Policy (2005)*.

Suite 6.02, 120 Sussex St, Sydney NSW 2000
P +61 2 8270 3500

CITYPLAN.COM.AU

M:\CPHeritage\Cph-2019\19-047 Nihon Uni, 9 Church St, Newcastle\3. Report\Letter_Nihon University, Newcastle.docx

The specific background documentation that will be utilised and consulted during the preparation of the Plan includes but not limited to the following:

- *Conservation Management Plan*, Newcastle Courthouse by Tanner Kibble Denton Architects, August 2015, Issue D;
- *Due Diligence Aboriginal Archaeological Assessment*, Newcastle Courthouse by AMAC, March 2019; and
- *Baseline Archaeological Assessment*, Newcastle Courthouse by AMAC, November 2018

This letter of confirmation has been prepared to inform the Department on the proposed methodology, contents of the Interpretation Plan, and advice on our acknowledgement of the SEARS requirements for the preparation of such Plan, which will also be submitted to obtain approval of the Heritage Council of NSW (or delegate) prior to Government certification.

I trust this letter will satisfy, in the interim, the requirement of the Department until completion of the required Plan. If there is anything in this letter that requires further clarification, please do not hesitate to contact me on (02) 8270 3500 or via email at kerimed@cityplan.com.au.

Yours sincerely,

A handwritten signature in black ink, appearing to read 'Kerime Danis'.

Kerime Danis
Director - Heritage

Encl. CPH Company profile

The background of the slide is a dark blue diagonal band. Behind this band is a grayscale image of a city skyline with several tall buildings. Overlaid on the entire background is a pattern of white, isometric 3D rectangular outlines of varying heights and orientations, creating a sense of architectural structure and depth.

Company Profile

City Plan Heritage

APRIL 2019



Shaping the City 

The City Plan group of companies provides a multi-discipline consultancy incorporating professionals from the fields of strategic and statutory planning, building surveying and accredited certification, access and heritage. Our level of integration is unique in authority approvals consultancies.

City Plan's charter is to map a clear path through a complex statutory environment to negotiate positive solutions. Through our strategic approach we facilitate land use change, unlocking value through providing innovative solutions within the existing frameworks controlling land-use, building and urban and public domain design. The development process involves many steps requiring both technical skill and knowledge of the planning, design and building process.

KEY AREAS OF EXPERTISE

City Plan has the capacity to think beyond our clients brief. We understand the process as a continuum, while many authorities and clients only deal with a slice of this multi – faceted process.

Established in 1996, we offer a unique integrated development service assisting clients offering multi disciplinary services in Planning, Building Regulations and Certification Services, Access and Heritage. From our offices in Sydney, Gosford, Newcastle and the Gold Coast we are able to provide our clients with specialist advice wherever their projects might be.

City Plan can provide specialist skills in the following:



- Building Assessment and Certification
- Subdivision and Strata Certification
- Build Audits and BCA Compliance Advice
- Annual Fire Safety Statements
- Access for People With Disabilities Assessments, Reports and Advice
- Forensic Inspections



- Heritage Impact Statements and Assessments
- Conservation Management Plans
- Heritage Studies and Interpretations
- Archival Recordings
- Archaeological Assessments
- Conservation Architectural Services



- Site Acquisition & Feasibility Advice
- Rezoning and Strategic Planning
- Assessment, Review and Preparation of Development Applications (DAs), Local Environmental Plans (LEP) and Development Control Plans (DCP)
- Preparation of Environmental Impact Statements (EIS), Reviews of Environmental Effects (REE) and Statements of Environmental Effects (SEE)



- Policy and procedural reviews
- Preparation of development controls
- Masterplans and Structure Planning

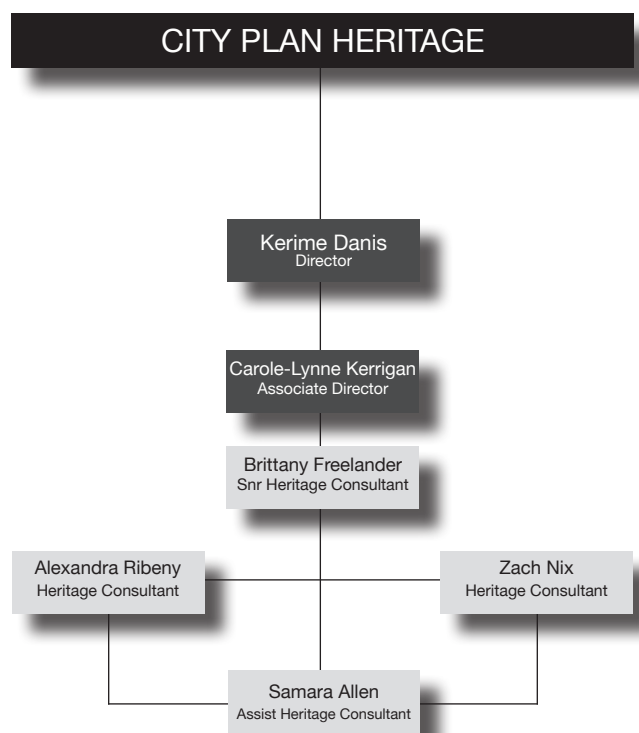


- Expert Evidence
- Court Matters
- Due Diligence
- Asset Planning
- Project Management



- Urban and Social research
- Government Advisory Roles
- Community Consultation
- Local Planning Panels
- Sydney Planning Panels





City Plan Heritage employs 6 professional heritage consultants who together with building and planning experts from our associated entities provide a range of experience and skills to be able to assist with all types of projects.

Kerime Danis

Director - Heritage

OUR PEOPLE



Trained as an architect and heritage consultant with over 35 years experience in heritage conservation and architecture both here and in the Turkish Republic, Kerime leads our Heritage team, working with a range of public and private sector clients and is actively involved in the development of sound conservation philosophy, practice and guidelines nationally & internationally. Kerime has been an active and influential member of ICOMOS since 2003 where she contributes to increasing knowledge and sharing the principles of heritage best practice. She is also an expert member of ICOMOS ICIP (International Scientific Committee for Interpretation and Preservation of Cultural Heritage Sites).

Qualifications

- Master of Heritage Conservation with Honours, University of Sydney (2002)
- Bachelor of Architecture, Mimar Sinan University, Istanbul (1982)
- Certificate in Heritage Documentation Methods, University of Sydney (2007)
- Certificate IV in Architectural Technology, SIT, Sydney (1999)

Professional Affiliations

- Past President, Australia ICOMOS
- Secretary General, ICOMOS International Scientific Committee on Interpretation & Presentation (ICIP)
- Member, NSW Heritage Council Approvals Committee
- Member, NSW Heritage Council Infrastructure Sub-committee
- Member, AIA Affiliate Level 1
- Member, Chamber of Architects, Turkey
- Member, AIA Heritage Committee

Special Competence

- Heritage advice from initial design through to completion of projects.
- Supervises conservation works as a conservation architect.
- Sound knowledge & expertise of *The Burra Charter* principles for the conservation of heritage places.
- Documentation of conservation works & expertise in preparation of:
 - Heritage Impact Statements
 - Conservation Management documents
 - Heritage Assessments
 - Interpretation Strategies
 - Supervision & preparation of Schedule of Conservation Works
 - Long term maintenance plans & archival recordings
 - Measured drawings of buildings
- Peer review & expert witness in the Land & Environment Court

Publications

- Publication working party member for:
 - *Design In Context: Guidelines for Infill Development in the Historic Environment*, Heritage Office & RAIA NSW Chapter,
 - *New Uses for Heritage Places*, Heritage Council & AIA NSW Chapter, 2008
- Unpublished Masters Thesis - 'The Corner Shop', University of Sydney (2002)

Recent Projects

- Shepherds Hill Defence Site CMP
- Bays Market District Precinct
- Ingleburn Military Heritage Precinct CMP
- Royal South Sydney Hospital redevelopment
- City of Sydney Industrial & Warehouses Study
- Peer Review of Millers Point terraces Conservation Management Plans for Land & Housing Corporation
- Community Based Heritage Studies
 - Pittwater Local Government Area
 - Hurstville Local Government Area
- Burwood Potential Items Heritage Study
- Randwick Junction Heritage Conservation Area Review
- White Bay Passenger Terminal redevelopment
- Health related projects including: Royal Rehabilitation Centre, South Sydney Hospital, Royal North Shore Hospital.
- Consultant to Laing O'Rourke, Sydney Metro project Stage 1 Bid
- BER 21 schools program under NBJP Stimulus Package.
- Adaptive re-use of a warehouse building, 144 Goulburn St, Surry Hills - mixed residential & commercial use
- Centennial Parklands including: Staff Amenities Building, Public Amenities, Moore Park Golf Club & Driving Range Clubhouse, Equestrian Grounds & the Parklands Weather Station.
- East Darling Harbour (Barangaroo) Redevelopment.
- City of Sydney projects including: Glebe Foreshore project, Gateway projects for Broadway & Darlinghurst Road- Kings Cross, & Bellevue Cottage
- Consultancy services to Sydney Harbour Foreshore Authority, RailCorp, Centennial Parklands, RMS & Sydney Ports.

Awards

- Meta, 144 Goulburn St, Surry Hills: National Trust Heritage Awards 2005, RAIA 2005 Awards, MBA 2005 Excellence in Housing Awards, IPA 2005 Excellence in Property Awards
- Victoria Park Gardener's Lodge: National Trust Heritage Awards (2013)
- Crago Flour Mill: 2009 Marrickville Medal for Conservation.
- City of Sydney Industrial & Warehouse Buildings Study: National Trust Heritage Awards (2016)

Carole-Lynne Kerrigan

Associate Director - Heritage

OUR PEOPLE



Carole-Lynne has extensive experience working within a multi-disciplinary environment on a wide range of cultural heritage projects within Australia & internationally including: residential, commercial, educational, ecclesiastical and state funded initiatives. Her experience includes providing and employing best practice conservation techniques and methodologies while working alongside project teams to ensure all heritage deliverables are compliant with set guidelines.

Qualifications

- Master of Cultural Heritage, Deakin University
- Bachelor of Arts (Cultural Heritage & Museums/Anthropology), University of Auckland
- Higher National Diploma Architecture, Tswane University of Technology, South Africa

Continuing Education

- Certificate in The Conservation of Traditional Buildings held at Canberra University (2009)
- Te Papa Metals Conservation short course (2010)
- Longford Academy Conservation Workshop (2016 & 2018)

Professional Affiliations

- Member, International Council of Monuments and Sites (ICOMOS)
- Member, International Committee on Intangible Cultural Heritage (ICICH)
- Member, Joint Australia/NZ ICOMOS Working Group on Risk Preparedness
- Member, Association for Preservation Technology

Awards

- 2012 Opus International Health and Safety Excellence Award for Individual
- 2012 Opus International Outstanding Commitment Award
- 2012 Opus International Supreme Teamwork Award

Published Papers

- Brown A., J. Hill, C. Kerrigan, M. Mitchell, J. Newall, 2013, Former Magistrates' Court Building – Strengthening and Performance. Opus International Consultants Ltd.

Special Competence

- Preparation of heritage impact statements, conservation management plans, archival records, inventory listings & condition assessments
- Heritage identification & assessing significance of built heritage based on physical & historical analysis
- Legislative interpretation & negotiation with government agencies & private landholders.
- Act as a technical expert on all built heritage matters. Provide best practice advice.
- Provide all services for the preservation, enhancement or commercial development of heritage assets.
- Provide an understanding of the need for the investment in heritage assets.
- Liaise with clients regarding design briefs, specifications and materials selection.
- Historical research
- Compliance monitoring & site supervision
- Primary liaison between Roads & Maritime Services and the Heritage Division

Professional Experience

- Associate Director, City Plan Services (2017-present)
- Senior Heritage Assessment Officer, Heritage Division (2016-2017)
- Senior Heritage Consultant, City Plan Services (2015-2016)
- Senior Heritage Consultant /Operations Manager, Heritage 21 (2015)
- Senior Heritage Consultant, Opus International Consultants (2007-2015)
- Researcher, Archifact (2006-2007)
- Built Heritage Researcher, JASMAX (1996-2006)
- Senior Architectural Technician, Rennie & Goddard Architects (1989-1993)

Brittany Allen

Senior Heritage Consultant

OUR PEOPLE

Brittany is a heritage professional with qualifications in Art History and Museums Studies. She has 10 years of experience working in collection management (including collection management systems), loan documentation, historic research, conservation management and exhibition development.

As a heritage consultant, Brittany has experience working in a variety of developments ranging from small scale residential and commercial, to major projects for government agencies and local councils. Her particular expertise is the preparation of heritage interpretation strategies, conservation management plans and heritage studies, and working with the cultural heritage of community groups.

Qualifications

- Master in Museum Studies, University of Sydney, 2010
- Bachelor of Arts, University of Sydney, 2008

Professional Affiliations

- Member, ICOMOS (2016-present)

Professional Experience

- Snr Heritage Consultant & Built Heritage Specialist, City Plan Heritage (2016-present)
- Heritage Consultant, City Plan Heritage
- Consultant Curator, Private Artist (2018-present)
- Consultant Museum Curator, Sydney University Dental Alumni Society Museum (2018-present)
- Museum Curator, Dr David Rosenwax AM, private collection (2015-present)
- Museum Curator, AM Rosenblum Jewish Museum, The Great Synagogue (2010-15)
- Museum Assistant, Macleay Museum, University of Sydney (2009-10)
- Museum Assistant, Collection Management Department, University of Sydney Museums (2009)
- Volunteer Curatorial Assistant, Macleay Museum, University of Sydney (2008-10)

Special Competence

- Preparation of heritage studies, CMPs, heritage interpretation strategies, assessment of significance, archival recordings, inventory listings & developing conservation strategies
- Providing best practice & heritage management advice
- Collection management & assessments
- Exhibition development
- Movable heritage assessments
- Writing interpretation plans & strategies
- DA assessments for local councils
- Strong research, analysis & writing skills
- Assessing significance of built heritage based on physical & historical analysis;

Publications

- Dr David Rosenwax AM Private Collection Catalogue, 2017
- Co-Editor of The Great Synagogue Journal (2011-15)
- *The Era of Postcards and the Jewish Greeting Tradition*, NSW Postcard Collectors Society Inc, Bulletin no. 130, Sept 2011, p.11-13
- *The Era of Postcards*, The Great Synagogue Journal 133rd & Annual Report, Volume 66 no.1, Aug 2010
- *Treasures of The Great Synagogue*, exhibition catalogue, The Great Synagogue, co-author, 2011
- *The Beauty of Books: Masterpieces from the Falk Library*, exhibition catalogue, The Great Synagogue Sydney, co-author, Dec 2010
- *The Turek Family Collection*, Sydney Jewish Museum Yearbook, 2010, p84-85

Exhibitions:

- A Stitch In Time, Jul 2014–Dec 2015
- Treasures of The Great Synagogue, Exhibition, Jul 2013–Jul 2014
- The Beauty of Books: Masterpieces from the Falk Library, Dec 2010–Jul 2011
- Victorian Tile Collection Display, Caroline Simpson Library & Research Collection, Sydney Living Museums, 2010
- Picturing New South Wales: Photographs by Kerry & Co, Macleay Museum, 2011 (assistant)

Recent Projects

- Conservation Management Plans:
 - Waverley Cemetery
 - Richmond Main Colliery
 - Closebourne Village Site, Morpeth
 - Newcastle East End (ongoing)
 - Shepherds Hill Defence Group Military Installations (ongoing)
 - Former Richmond Post Office, Westmead Station (South) Heritage Study
- Intertrade Industrial Park Heritage Study, Newcastle (ongoing)
- Botany Rd Corridor Heritage Study (ongoing)
- Hunter Development Corporation Heritage Asset Management Strategy & S170 Register update (ongoing)

Alexandra Ribeny

Heritage Consultant

Alexandra is a Heritage Professional with qualifications in Archaeological Research and Practice. She has extensive experience in archaeological research design, field work and publication. As a Heritage Consultant Alexandra has been involved in a variety of developments ranging from small scale residential & commercial, to major projects for government agencies and local councils.

Qualifications

- Master of Archaeological Science, Australian National University (2017)
- Bachelor of Arts, Honours (First Class), University of Sydney (2016)
- Bachelor of Archaeological Practice, Australian National University (2012)

Publications

- *Aegyptiaca: in Pre- and Proto-palatial Crete, Honours Thesis*, University of Sydney (2016)
- *An Anthracological Pilot Study at Lepu-Kina Rockshelter, Atauro Island, East Timor*, Report prepared for L'Institut de recherche pour le développement (IRD), MSc, Australian National University (2017)

Special Competence

- Heritage studies & reviews
- Preparation of documentation for:
 - heritage impact statements,
 - archival recordings,
 - conservation management plans,
 - heritage assessments,
 - heritage interpretation plans & strategies
- Quantitative & qualitative historical & archival research skills
- Archaeobotanical expertise including in-field sampling, post-excavation processing, laboratory analysis & interpretation.
- Familiarity with the archaeological 'process'; from research design, through excavation, survey & post-excavation sampling, recording and analysis.
- Strong research, analysis & writing skills
- Experience leading seminars, presenting research & engaging with community interests

OUR PEOPLE

Professional Experience

- Heritage Consultant, City Plan Heritage (2017-present)
- Archaeobotanist, INDAP (2017-present)
- Research Assistant, City Plan Heritage (2017)
- Research Assistant, Aboriginal & Torres Strait Islander Healing Foundation (2013)

Recent Projects

- Heritage Assessment, Branxton Town Centre, Branxton
- Heritage Impact Assessment, RMS Wharf Upgrade Project, Cabarita Wharf, Cabarita
- Heritage Impact Assessment, Hansard Street Conservation Area, Zetland
- Historical Research and Heritage Comparison, 'Hollowforth' residence, Kurraba Point
- Archaeological projects:
 - 'Industries of Angkor' (INDAP), Cambodia (January 2017)
 - Lepu-Kina Rockshelter Excavations, East Timor (2016)
 - Cambridge Keros Project, Greece (2016)
 - Zagora Archaeological Project, Greece
 - Springbank Island Archaeology Project ACT (April 2015)
 - 'Aboriginal & Torres Strait Islander Healing foundation', ACT (2013)
 - Indigenous Cultural Heritage Survey, Kosciusko National Park (April 2013)
 - Indigenous Rock Art Survey, Oenpelli, Arnhem Land NT (July 2012)
 - Biblical City of Zoara Project, Jordan (2008)

Zach Nix

Heritage Consultant

Zach is a heritage consultant with extensive customer service experience and a passion for architecture, history and heritage conservation. He has experience in architectural drafting, historical research and conservation management. As a heritage consultant, Zach has experience working on a variety of developemnts ranging from small scale residential and commercial, to major projects for government agencies and local councils.

Qualifications

- Masters Heritage Conservation, University of Sydney (currently enroled)
- Bachelor of Arts - Russian Studies, Macquarie University (2017)

Special Competence

- Assessing significance of built heritage items based on historical research & physical analysis;
- Historical summary & research skills;
- Strong analysis & writing skills;
- Preparation of documentation for:
 - Heritage Impact Statements,
 - Archival Recordings,
 - Heritage Studies,
 - Heritage Interpretation Plans & Strategies.
- Competence in AutoCad & Revit, Building Information Modelling Software
- Conservation theory & applications

Professional Experience

- Heritage Consultant, City Plan Heritage (2019 – Present)
- Assistant Heritage Consultant, City Plan Heritage (2018 – 2019)
- Assistant Draftsman, 3 & 1 Drafting & Design (2017-2018)

Recent Projects

- Heritage Impact Statements for:
 - Oxford St, Darlinghurst
 - The Grounds of Alexandria
 - Market St, Sydney
 - George St, Sydney
- Heritage Interpretation Strategy at Sussex St Sydney
- Heritage Study, Historical Research for:
 - Phillip St, Parramatta
 - Botany Road Corridor (Ongoing)

OUR PEOPLE

Samara Allen

Assistant Heritage Consultant

OUR PEOPLE

Samara is a heritage professional with qualifications in History and Archaeology. She has 5 years' experience in working in archaeological survey, excavation, recording and salvage (including indigenous archaeology), historical research, conservation management and administration. As a heritage consultant, Samara has experience working in a variety of developments ranging from small scale residential and commercial, to major projects for government agencies and local councils.

Qualifications

- Bachelor of Arts, Honours, University of Western Australia, 2012

Special Competence

- Assessing significance of built heritage items based on historical research and physical analysis;
- Archaeological survey and identification of indigenous heritage sites (i.e. artefact scatters);
- Historical summary and research skills;
- Strong analysis and writing skills;
- Recording and analysis of indigenous stone tool artefacts;
- Preparation of documentation for:
 - Heritage Impact Statements,
 - Archival Recordings,
 - Heritage Studies,
 - Heritage Interpretation Plans and Strategies.

Professional Experience

- Assistant Heritage Consultant, City Plan Heritage (2018 – Present)
- Archaeologist, Archae-aus (2012 – 2014)
- Laboratory Volunteer, University of Western Australia (2010-2011)

Recent Projects

- Heritage Impact Statements:
 - Bronte Beach Village Upgrade, Bronte Beach NSW
 - Wharf Road, Birchgrove NSW
 - Blacket Street, Wollongong NSW
 - The Entrance Hotel, The Entrance NSW
- Heritage Due Diligence Report, Yiu Ming Temple Precinct, Alexandria NSW
- Heritage Interpretation Plan and Strategy, Newlife Project, Pyrmont NSW
- Summary history for Interpretive panels, Dexus Quarry West, Greystanes NSW
- Compilation of historical summaries for Sydney Suburb History database
- Archaeology Projects and Field Work:
 - Fortescue Metals Group, Exploration (Newman WA) 2013
 - Roy Hill Iron Ore, Exploration (Roy Hill WA) 2012 – 2014
 - Chevron, Wheatstone Project (Onslow WA) 2012 – 2013
 - Field work, Excavation (Toodyay WA) 2010
 - Field work, Excavation (York WA) 2012

City Plan Heritage was established within the City Plan Services Group in 2000. By offering professional heritage consultancy services within the infrastructure of a large planning firm rather than being aligned to an architectural practice, City Plan Heritage can provide its clients truly independent advice.

City Plan Heritage is a corporate member of Australia ICOMOS and our team is skilled in the disciplines of heritage conservation and management, bringing together a unique combination of experience, qualification and practise in architecture, archaeology, heritage conservation and interpretation. We are often involved from the earliest design stage of a proposal in order to provide the best technical and management advice for all heritage issues. Our principals are involved in the making of heritage legislation and principles at government, non-government organisations and institutional levels.

From large-scale developments to small residential extensions, empathy and respect for the work of the designers, architects and other specialists is assured, as is work quality and value. Our work assists a range of clients with decision making and approvals, demonstrating our commitment to meet the current statutory and philosophical standards.

We offer the full range of independent Heritage assessment & advice, collection care & management services available by virtue of the extensive breadth, skill & experience of our staff.

Heritage Impact Statements:

- Advice on the design to ensure the best outcome for a site's heritage significance
- Assessment of the Heritage Significance of a site based on documentary evidence
- Assessment of the proposed works and of any impact on heritage issues against the relevant heritage planning provisions and in accordance with best practice heritage guidelines

Heritage Assessments:

- Assessment of the significance of a place having regard to the documentary and physical 'evidence' and in accordance with the NSW Heritage Assessment criteria
- Opportunities and constraints to inform the management of heritage assets

Conservation Management Plans:

- Written conservation management document to advise owners on why an item is significant & how its value can be conserved while ensuring future viability. The advice is based on the three-step NSW Heritage Management System - investigate significance, assess significance & manage significance through policies & conservation strategies to achieve long term viability of the site

Heritage Studies:

- Understanding of the heritage character and values of a local government area or parts of the area to inform strategic planning undertaken by the relevant council

Archival Recording:

- Undertaking expert photography and compiling digital and hard copy reports in accordance with the NSW Heritage Office guidelines

Archaeological Assessments & Coordination of Archaeological Services:

- Provision of desktop research, archival searches and site surveys in order to inform the location, identity and management of any archaeological resources across the site Sub contracting and management of archaeological site work in order to meet the NSW and Australian legislative requirements

Development Assessments and Peer Reviews:

- Provision of independent heritage advice to assist councils' in their assessment of heritage related DAs or a second opinion on council's own assessment

Collection Services:

- Significance assessments
- Collection management, cataloguing & research
- Preparation of collection policies & preservation needs assessments
- Exhibition research & curating
- Public Program Development
- Disaster Preparedness

Heritage Interpretation:

- Communicating the history and story of the place via a series of graphic panels, guided walks and displays guided by Interpretation Strategies and Plans

Conservation Architect Services:

- Specialist technical advice before and during construction and provision of sign-off for occupation certificates

Working in collaboration with 'in-house' technical experts, City Plan Heritage can organise for the streamlined provision of Strategy & Development, and Building, Access & Subdivision Consultancy Services.