



## **APPENDIX B      SITE CADASTRE**

## B1. APPENDIX B - UPDATED LAND TITLE

### B1.1 Land Details

Hills of Gold Wind Farm Pty Ltd has entered into lease agreements with 14 landholders hosting project infrastructure, including the transmission line and switching station (encompassing 64 individual lots). A summary of the lots comprising the Project Area inclusive of the transmission line is provided in Table B1-1 and cadastral boundaries are shown in Figures B1a – B1c.

There are:

- five (5) associated dwellings located within the Project Area;
- eight (8) associated dwellings and six (6) non associated dwellings and two approved but not constructed non associated dwellings within 2 km of a turbine; and
- nine (9) associated dwellings and 19 non associated dwellings and one approved but not constructed non associated dwelling between 2 km and 4 km of a turbine.

There are also a number of other non - residential structures located nearby.

**Table B1-1 Land Title details of the Project Area**

Landowner Group	Lot number	Deposited Plan	Title
Landowner 1	1	372603	Freehold
	1	1248346	Freehold
	1	339044	Freehold
	64, 66, 67, 68, 137	751023	Freehold
	79, 80	755323	Freehold
	2	226603	Freehold
Landowner 2	2	226064	Freehold
	81	755323	Freehold
	2	1217614	Freehold
Landowner 3	1	204315	Freehold
Landowner 4	105	750935	Freehold
	1	137052	Freehold
	189, 199	750922	Freehold
	2	204315	Freehold
	1, 3	1178261	Freehold
	184	750922	Freehold
Landowner 5	90	755349	Freehold
	1	1083462	Freehold

Landowner Group	Lot number	Deposited Plan	Title
Landowner 6	119, 120	603365	Freehold
	20, 21, 22, 77, 78, 79, 80, 81, 82, 83, 84, 85, 91, 92, 93, 94, 97, 98, 100, 102, 103, 115,	755349	Freehold
	2	1196186	Freehold
Landowner 7	201	1260690	Freehold
Landowner 8	2	1171688	Freehold
Landowner 9	1, 2	362665	Freehold
	32	1044255	Freehold
Landowner 10	1	1171688	Freehold
Landowner 11	200, 201, 202, 203	750922	Freehold
	1	1227118	Freehold
Landowner 12	48	753722	NSW Government*
Landowner 13	3	1103716	Freehold
Landowner 14	210	819485	Freehold

\* Crown land under Perpetual Lease

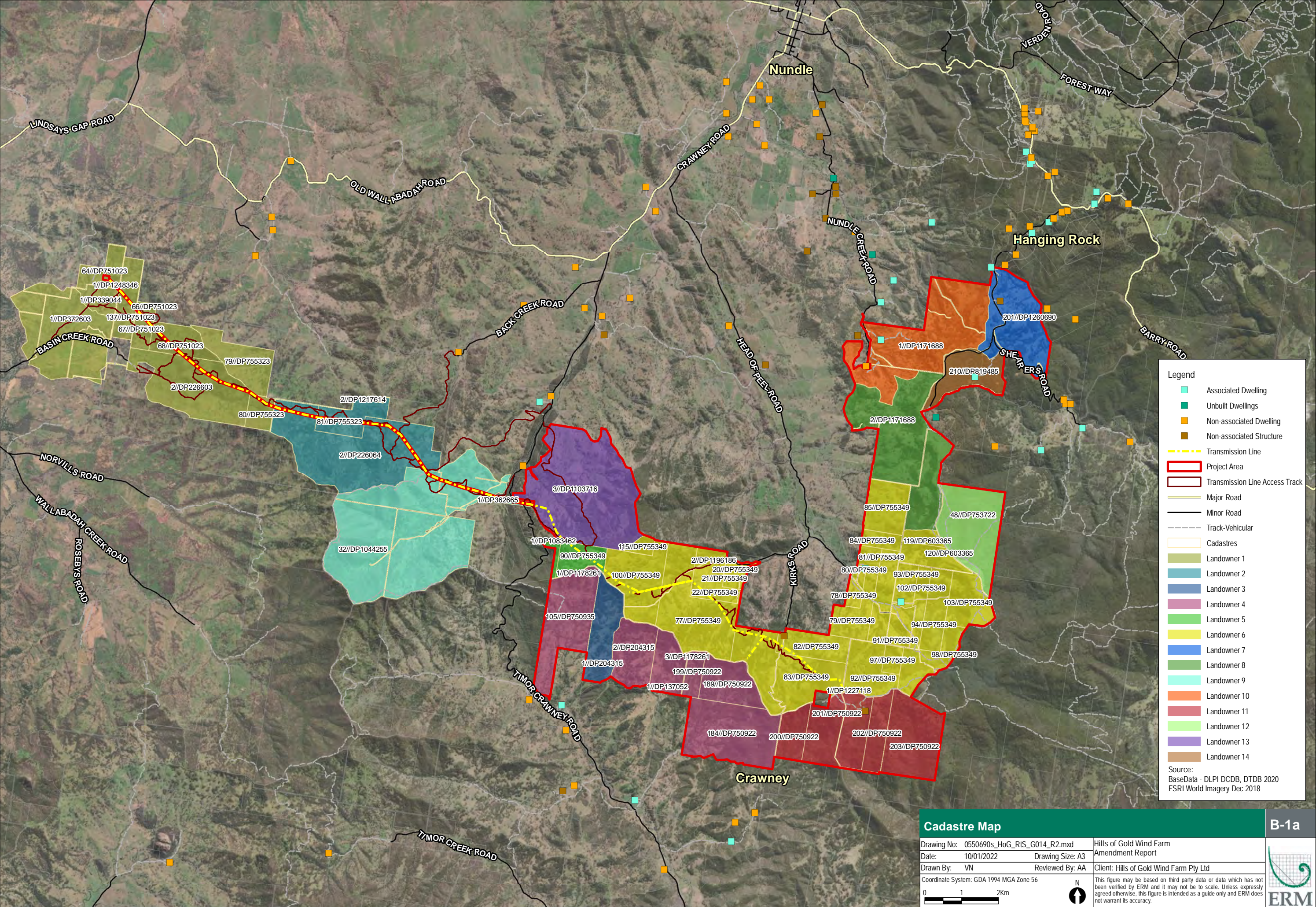
Crown paper roads are also located within the Project Area as discussed in Section 4.2.3 of the EIS.

Additional allotments associated with the road access for the transmission line access are detailed in Table B1-2. Further road upgrades have been identified as being required along the proposed transport route from the Port of Newcastle to the Project Area. The cadastral data of the allotments associated with these are detailed in Table B1-2.

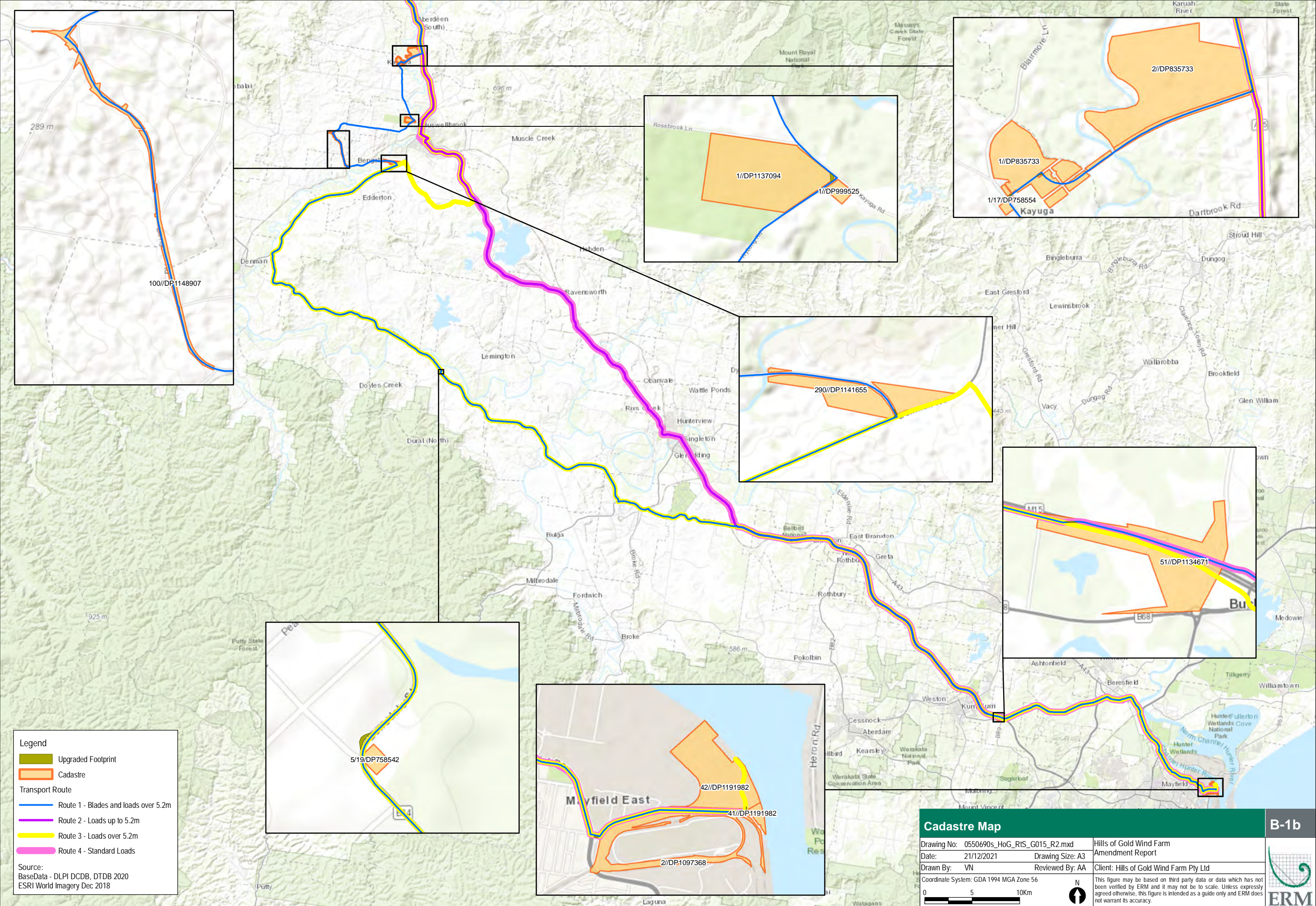
**Table B1-2 and Title details of Proposed Road Upgrades and Transmission Line Access Roads**

Lot /Section/DP	Lot /Section/DP	Lot /Section/DP	Lot /Section/DP
1//DP1067837	1//DP1137094	1//DP835733	1//DP999525
1/17//DP758554	6//DP249183	100//DP1148907	13//DP249183
2//DP1097368	2//DP835733	271//DP755335	272//DP755335
286//DP729019	290//DP1141655	365//DP755335	4/27//DP758798
41//DP1191982	42//DP1191982	428//DP755335	439//DP822503
440//DP822503	5/19//DP758542	51//DP1134671	7302//DP1136648
7350//DP1178939	95//DP755335	1//DP226603	14//DP1151059
15//DP1151059	4//DP755323	40//DP755323	45//DP755323
57//DP755323	65//DP751023	87//DP755323	26//DP755349
70//DP651371			









Legend

Upgraded Footprint

Cadastre

Transport Route

Route 1 - Blades and loads over 5.2m

Route 2 - Loads up to 5.2m

Route 3 - Loads over 5.2m

Route 4 - Standard Loads

Source:

BaseData - DLPI DCDB, DTDB 2020

ESRI World Imagery Dec 2018

Cadastral Map

B-1b

Drawing No: 0550690s\_HoG\_RIS\_G015\_R2.mxd

Date: 21/12/2021

Drawn By: VN

Coordinate System: GDA 1994 MGA Zone 56

Hills of Gold Wind Farm

Amendment Report

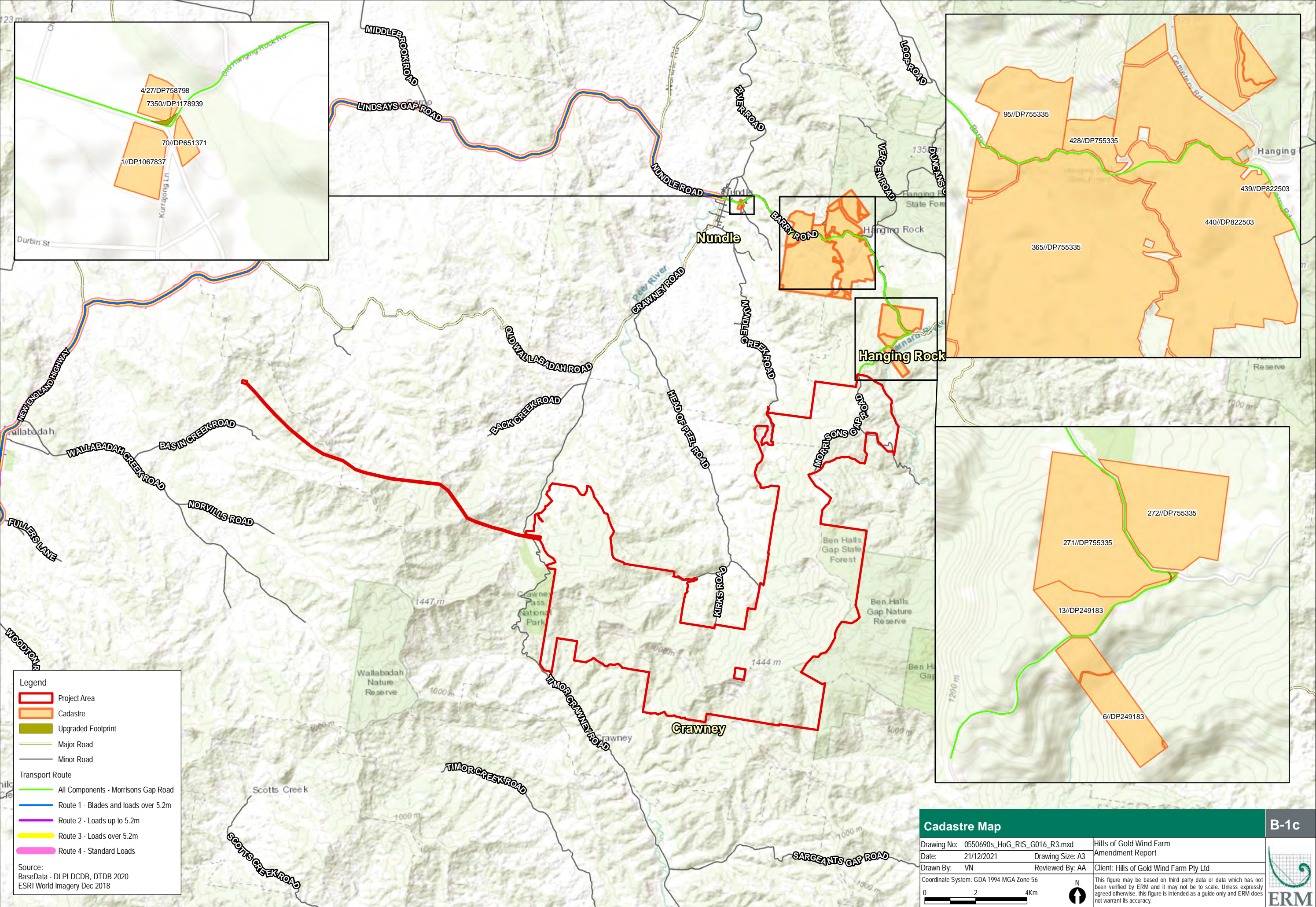
Reviewed By: AA

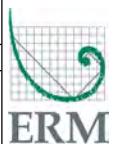
Client: Hills of Gold Wind Farm Pty Ltd

This figure may be based on third party data or data which has not been verified by ERM and it may not be to scale. Unless expressly agreed otherwise, this figure is intended as a guide only and ERM does not warrant its accuracy.

ERM





Cadastral Map			B-1c
Drawing No: 0550690s_HoG_RIS_G016_R3.mxd		Hills of Gold Wind Farm	
Date: 21/12/2021	Drawing Size: A3	Amendment Report	
Drawn By: VN	Reviewed By: AA	Client: Hills of Gold Wind Farm Pty Ltd	
Coordinate System: GDA 1994 MGA Zone 56		 This figure may be based on third party data or data which has not been verified by ERM and it may not be to scale. Unless expressly agreed otherwise, this figure is intended as a guide only and ERM does not warrant its accuracy.	
<div><div><div>0</div><div>2</div><div>4Km</div></div><div><div>N</div><div>↑</div></div></div>			