



APPENDIX B UPDATED LAND TITLE

B1. APPENDIX B - UPDATED LAND TITLE

B1.1 Land Details

Hills of Gold Wind Farm Pty Ltd has entered into lease agreements with 14 landholders hosting project infrastructure, including the transmission line and switching station (encompassing 65 individual lots). A summary of the lots comprising the Project Area inclusive of the transmission line is provided in Table B1-1 and cadastral boundaries are shown in Figures B1a – B1c.

There are:

- five (5) associated dwellings located within the Project Area;
- four (4) associated dwellings and six (6) non associated dwellings and two approved but not constructed non associated dwellings within 2 km of a turbine; and
- eleven (11) associated dwellings and 17 non associated dwellings and one approved but not constructed non associated dwelling between 2 km and 4 km of a turbine.

There are also a number of other non-residential structures located nearby.

Table B1-1 Land Title details of the Project Area

Landowner Group	Lot number	Deposited Plan	Title
Landowner 1	1	372603	Freehold
	1	1248346	Freehold
	1	339044	Freehold
	64, 66, 67, 68, 137	751023	Freehold
	79, 80	755323	Freehold
	2	226603	Freehold
Landowner 2	2	226064	Freehold
	81	755323	Freehold
	2	1217614	Freehold
Landowner 3	1	204315	Freehold
Landowner 4	105	750935	Freehold
	1	137052	Freehold
	189, 199	750922	Freehold
	2	204315	Freehold
	1, 3	1178261	Freehold
	184	750922	Freehold
Landowner 5	90	755349	Freehold
	1	1083462	Freehold
Landowner 6	119, 120	603365	Freehold
	20, 21, 22, 77, 78, 79, 80, 81, 82, 83, 84, 85, 91, 92, 93, 94, 97, 98, 100, 102, 103, 115, 120	755349	Freehold

Landowner Group	Lot number	Deposited Plan	Title
	2	1196186	Freehold
Landowner 7	201	1260690	Freehold
Landowner 8	2	1171688	Freehold
Landowner 9	1, 2	362665	Freehold
	32	1044255	Freehold
Landowner 10	1	1171688	Freehold
Landowner 11	200, 201, 202, 203	750922	Freehold
	1	1227118	Freehold
Landowner 12	48	753722	NSW Government*
Landowner 13	3	1103716	Freehold
Landowner 14	210	819485	Freehold
Landowner 15	7301, 7302	1136648	Crown Land
	26	755349	Crown Land
	1	210662	Crown Land

* Crown land under Perpetual Lease

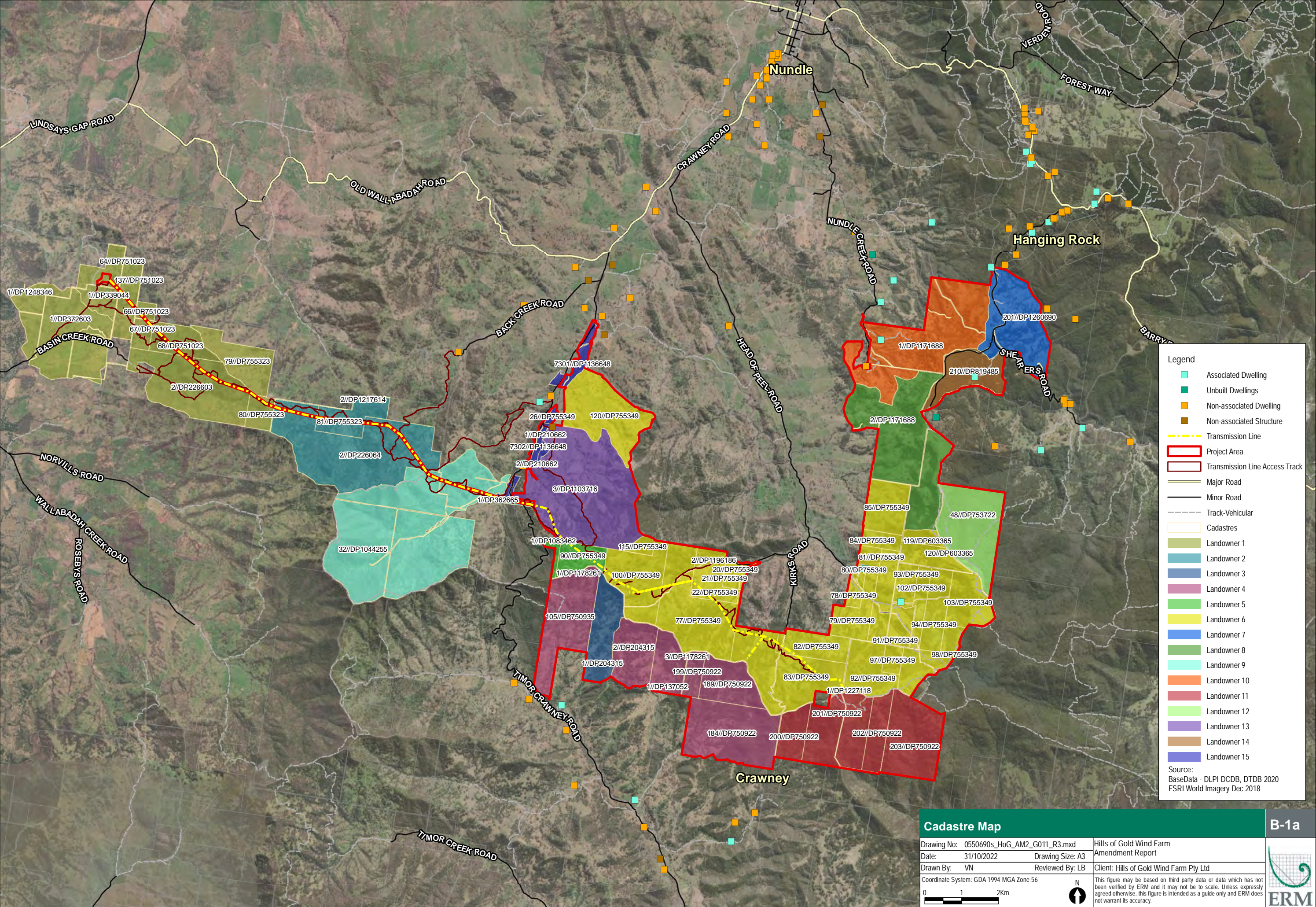
Crown paper roads are also located within the Project Area as discussed in Section 4.2.3 of the EIS.

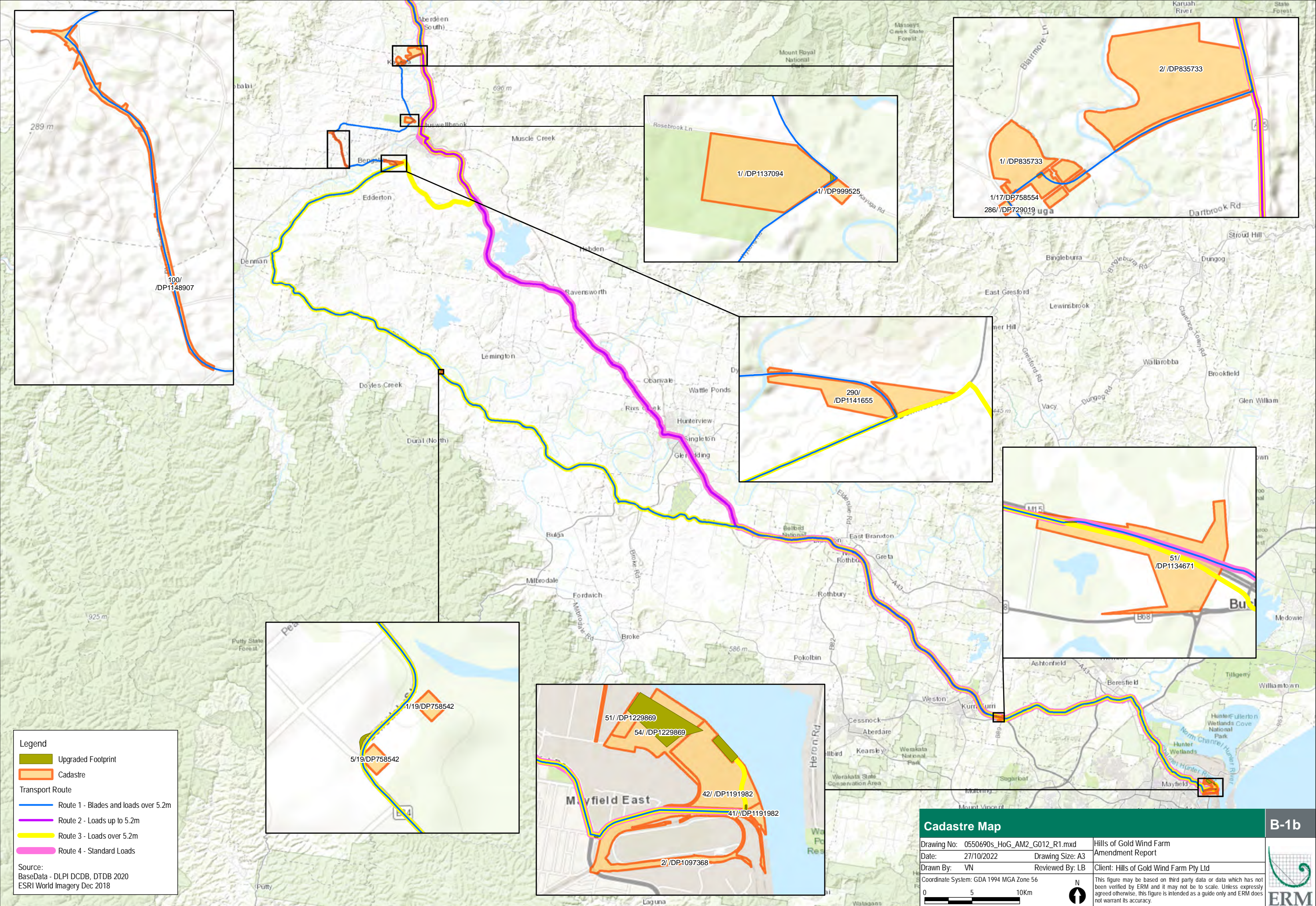
Additional allotments associated with the road access for the transmission line access are detailed in Table B1-2. Further road upgrades have been identified as being required along the proposed transport route from the Port of Newcastle to the Project Area. The cadastral data of the allotments associated with these are detailed in Table B1-2.

Table B1-2 Land Title details of Proposed Road Upgrades and Transmission Line Access Roads

Lot /Section/DP	Lot /Section/DP	Lot /Section/DP	Lot /Section/DP
1//DP1067837	1//DP1137094	1//DP835733	1//DP999525
1/17//DP758554	6//DP249183	100//DP1148907	13//DP249183
2//DP1097368	2//DP835733	271//DP755335	272//DP755335
286//DP729019	290//DP1141655	365//DP755335	4/27//DP758798
41//DP1191982	42//DP1191982	428//DP755335	439//DP822503
2//DP226064	5/19//DP758542	51//DP1134671	7302//DP1136648
7350//DP1178939	95//DP755335	1//DP226603	14//DP1151059
15//DP1151059	4//DP755323	40//DP755323	45//DP755323
57//DP755323	65//DP751023	87//DP755323	1//DP37260
70//DP651371	13/2//DP758798	9//DP1118984	12/2//DP758798
10//DP1118984	1//DP997480	11//DP1124681	2//DP997480
12//DP1124681	4/2//DP758798	1//DP210662	5/2//DP758798
6/2//SP758798	120//DP755349	7/2//DP758798	11//DP1118980
254//DP755324	6711//DP1204174	7//DP250813	12//DP1136211
13//DP37337	7018//DP96513	2//DP226064	171//DP755335

Lot /Section/DP	Lot /Section/DP	Lot /Section/DP	Lot /Section/DP
2//DP226603	9//DP24918	2//DP712947	1//DP339044





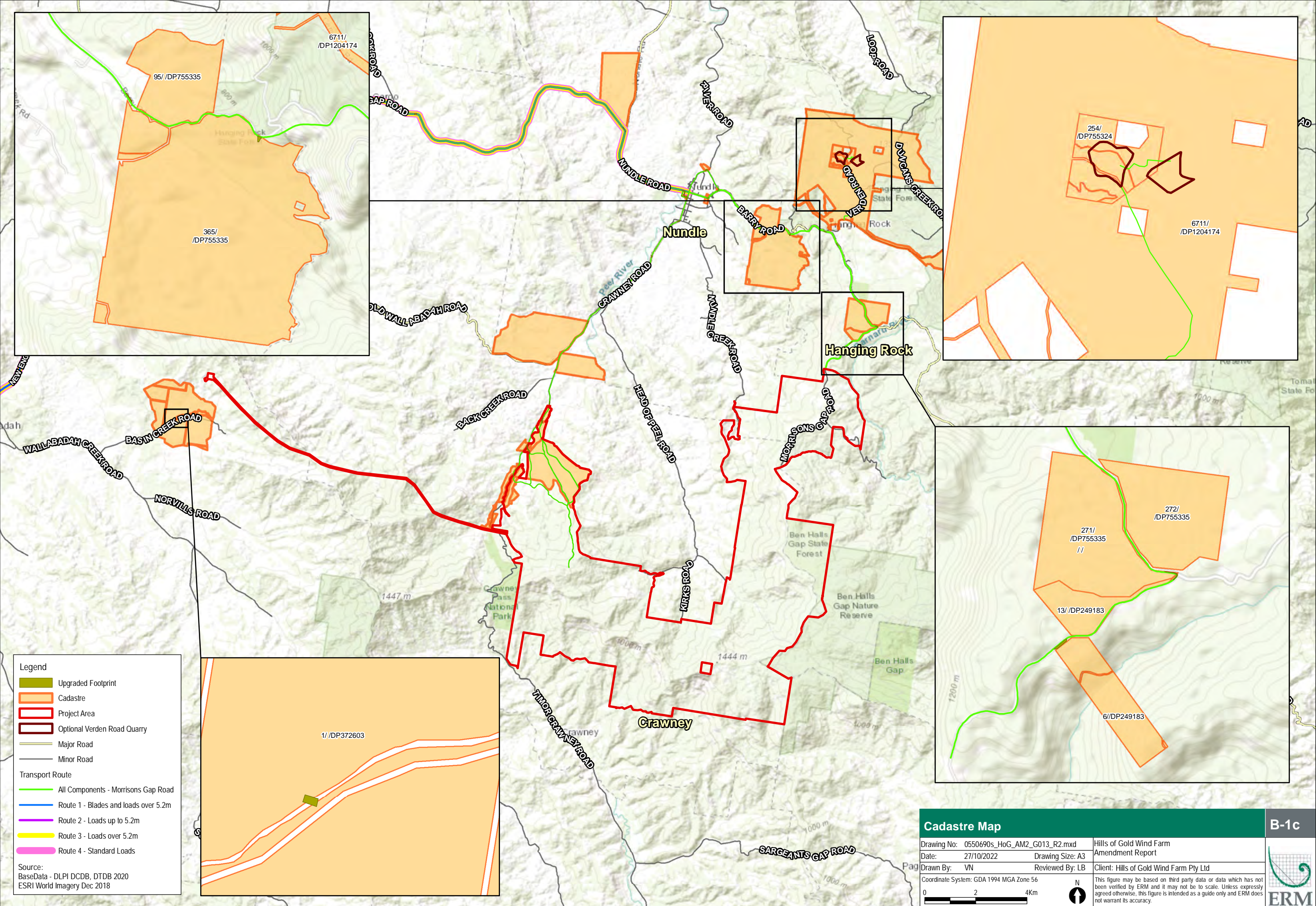
Legend

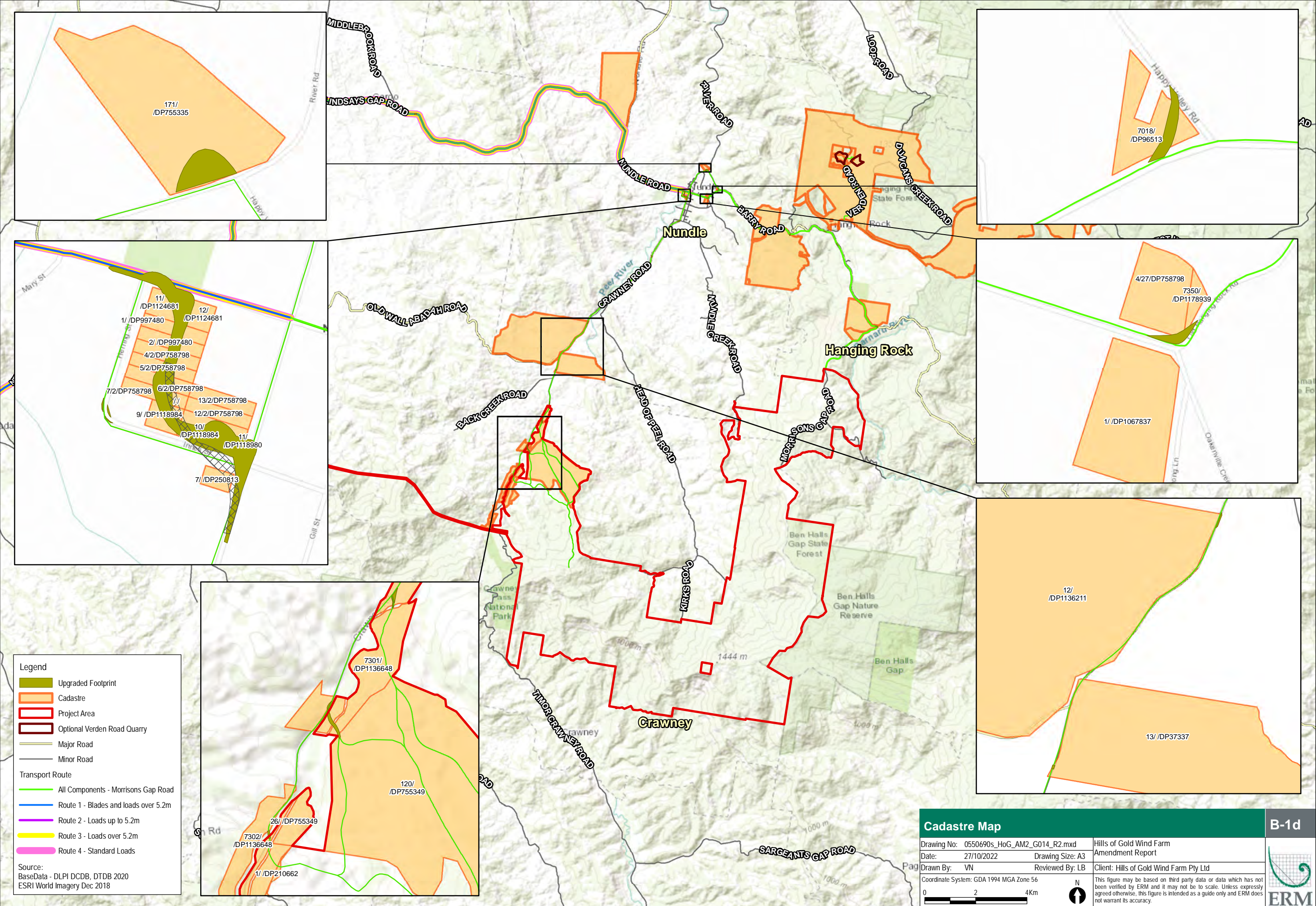
- Upgraded Footprint
- Cadastre
- Transport Route
 - Route 1 - Blades and loads over 5.2m
 - Route 2 - Loads up to 5.2m
 - Route 3 - Loads over 5.2m
 - Route 4 - Standard Loads

Source:
BaseData - DLPI DCDB, DTDB 2020
ESRI World Imagery Dec 2018

Cadastral Map		B-1b
Drawing No: 0550690s_HoG_AM2_G012_R1.mxd	Hills of Gold Wind Farm	
Date: 27/10/2022	Drawing Size: A3	Amendment Report
Drawn By: VN	Reviewed By: LB	Client: Hills of Gold Wind Farm Pty Ltd
Coordinate System: GDA 1994 MGA Zone 56		This figure may be based on third party data or data which has not been verified by ERM and it may not be to scale. Unless expressly agreed otherwise, this figure is intended as a guide only and ERM does not warrant its accuracy.
0 5 10Km		







**ERM has over 160 offices across the following
countries and territories worldwide**

Argentina	The Netherlands
Australia	New Zealand
Belgium	Norway
Brazil	Panama
Canada	Peru
Chile	Poland
China	Portugal
Colombia	Puerto Rico
France	Romania
Germany	Senegal
Ghana	Singapore
Guyana	South Africa
Hong Kong	South Korea
India	Spain
Indonesia	Sweden
Ireland	Switzerland
Italy	Taiwan
Japan	Tanzania
Kazakhstan	Thailand
Kenya	UAE
Malaysia	UK
Mexico	US
Mozambique	Vietnam

ERM's Sydney Office

Level 15 309 Kent Street
SYDNEY NSW 2000

T: +61 28584 8888

www.erm.com