



Appendix D

Photomontages and Wireframe Diagrams

Photomontage 17

Photomontage 17 (NAD20)

Location:
Morrisons Gap Rd
Photograph Date and Time:
16th June 2020 11:37am
Coordinates:
31°30'36.14"S 151°12'15.17"E
Distance to nearest visible WTG:
3.1km (WP69)
Viewing Direction:
West-southwest
Elevation:
1242m
Representative Dwelling/s:
NAD20

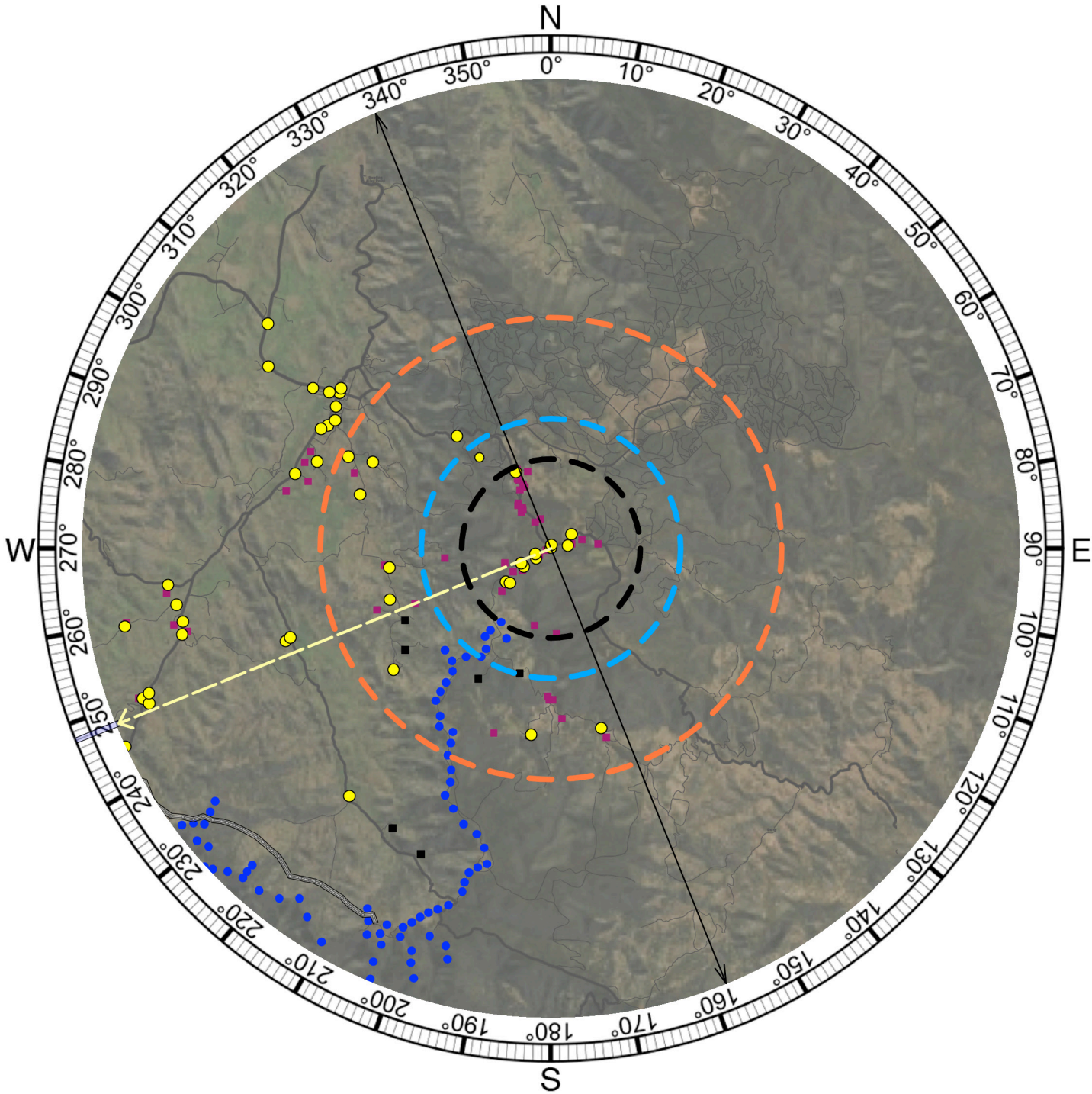


Figure D17A Photomontage 17 (NAD20) Location and Viewing Direction (Aerial image Source: ESRI)

KEY

Photomontage Location

Associated Dwelling Location

Non-associated Dwelling Location

3100m from viewpoint

4500m from viewpoint

8000m from viewpoint

Turbine location

Extent of photomontage

Centre of photomontage



Figure D17B Photomontage Location
Aerial image - Source: Six Maps

Photomontage 17



Existing View

Refer to cropped 60° image



Proposed View

Photomontage 17



Proposed View - 60 degree Field of View

Photomontage 18

Photomontage 18 (NAD21)

Location:
Crawney Rd
Photograph Date and Time:
16th June 2020 11:37am
Coordinates:
31°30'36.14"S 151°12'15.17"E
Distance to nearest WTG:
3.0km (WP70) (Not Visible)
Viewing Direction:
Southwest
Elevation:
1242m
Representative Dwelling/s:
NAD21

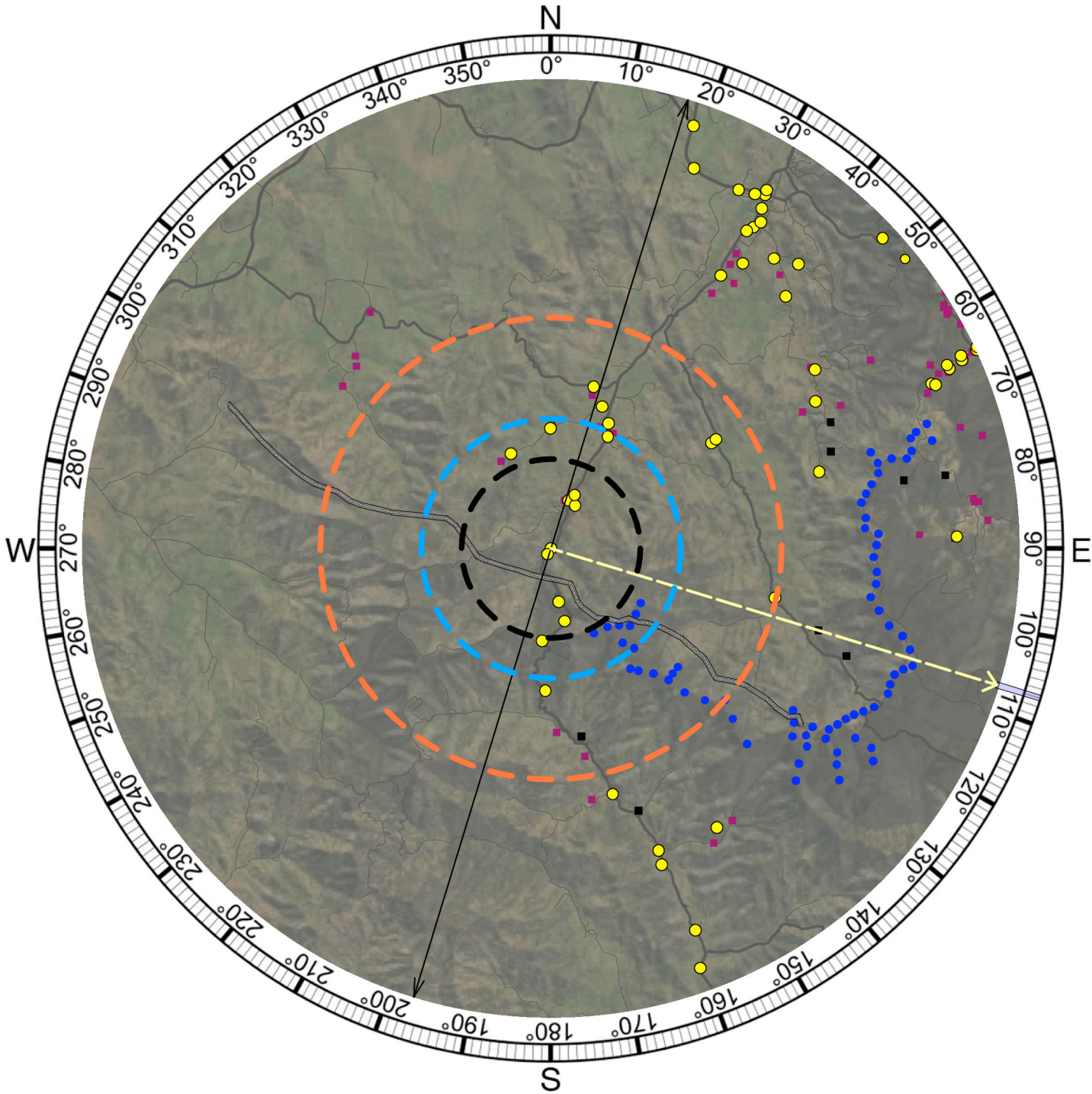


Figure D18A Photomontage 18 (NAD21) Location and Viewing Direction (Aerial image Source: ESRI)

- KEY**
- Photomontage Location
 - Non-associated Dwelling Location
 - Associated Dwelling Location
 - 3100m from viewpoint
 - 4500m from viewpoint
 - 8000m from viewpoint
 - Turbine location
 - ↔ Extent of photomontage
 - Centre of photomontage

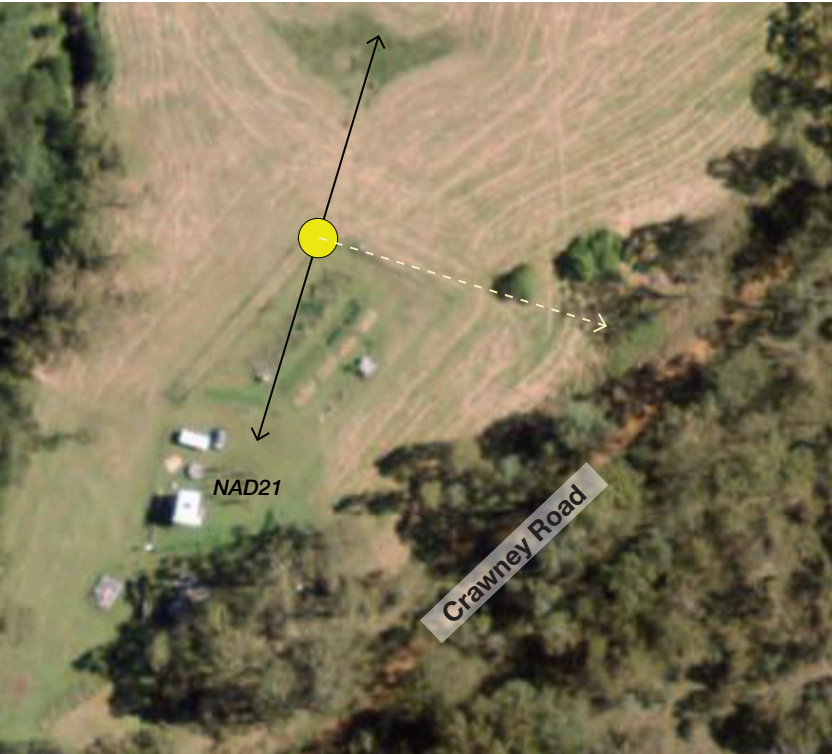
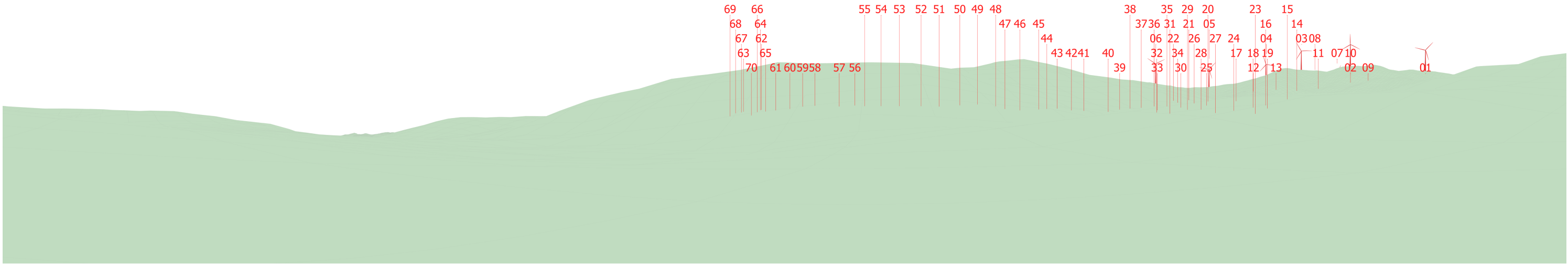


Figure D18B Photomontage Location
Aerial image - Source: Six Maps

Photomontage 18



Existing View



Proposed Wireframe View

Photomontage 19

Photomontage 19 (AD23)

Location:
Morrison's Gap Rd
Photograph Date and Time:
16th June 2020 11:53am
Coordinates:
31°30'47.60"S 151°11'55.36"E
Distance to nearest visible WTG:
3.0km (WP70)
Viewing Direction:
South
Elevation:
1258m
Representative Dwelling/s:
AD23

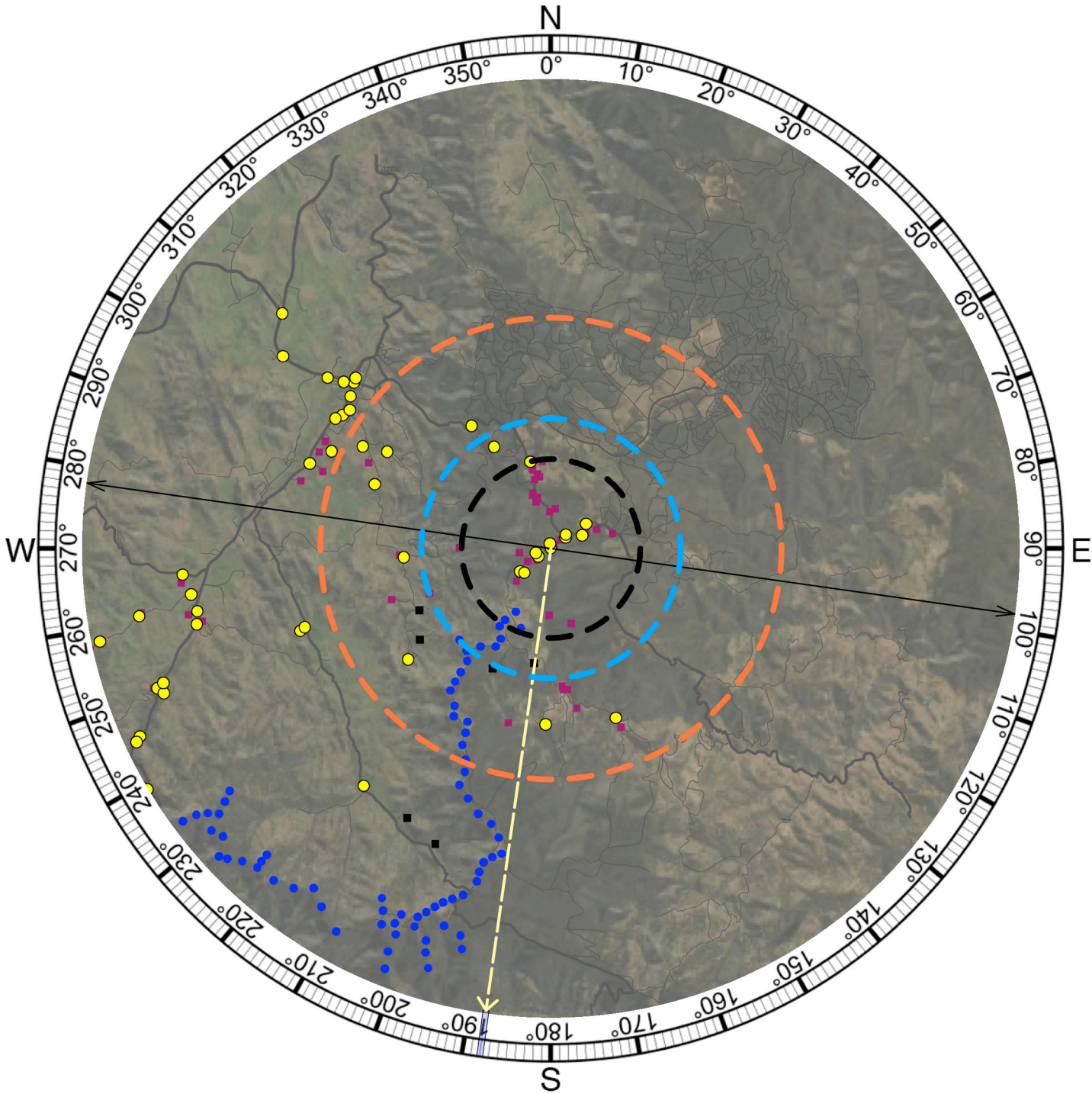


Figure D19A Photomontage 19 (AD23) Location and Viewing Direction (Aerial image Source: ESRI)

KEY

Photomontage Location

Non-associated Dwelling Location

Associated Dwelling Location

3100m from viewpoint

4500m from viewpoint

8000m from viewpoint

Turbine location

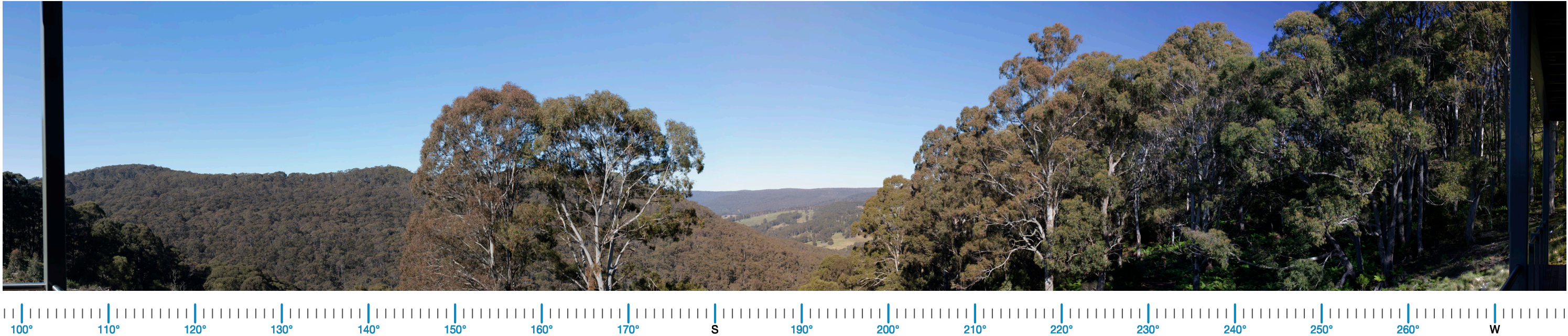
Extent of photomontage

Centre of photomontage



Figure D19B Photomontage Location
Aerial image - Source: Six Maps

Photomontage 19



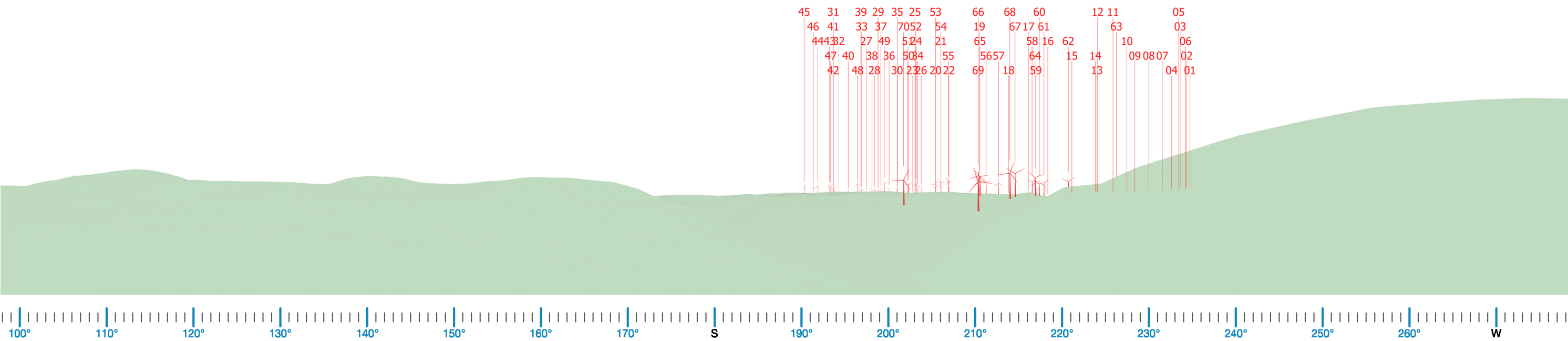
Existing View

Refer to cropped 60° image



Proposed View

Photomontage 19



Proposed Wireframe View

Photomontage 19



Proposed View - 60 degree Field of View