



Appendix D

Photomontages and Wireframe Diagrams

Photomontage 04

Photomontage 04 (HOG34)

Location:
Nundle Cemetery
Photograph Date and Time:
18th March 2020 10:22am
Coordinates:
31°28'49.73"S 151° 7'50.71"E
Distance to nearest visible WTG:
7.5km (WP63)
Viewing Direction:
Southeast
Elevation:
639m
Representative Dwelling/s:
Nundle Cemetery

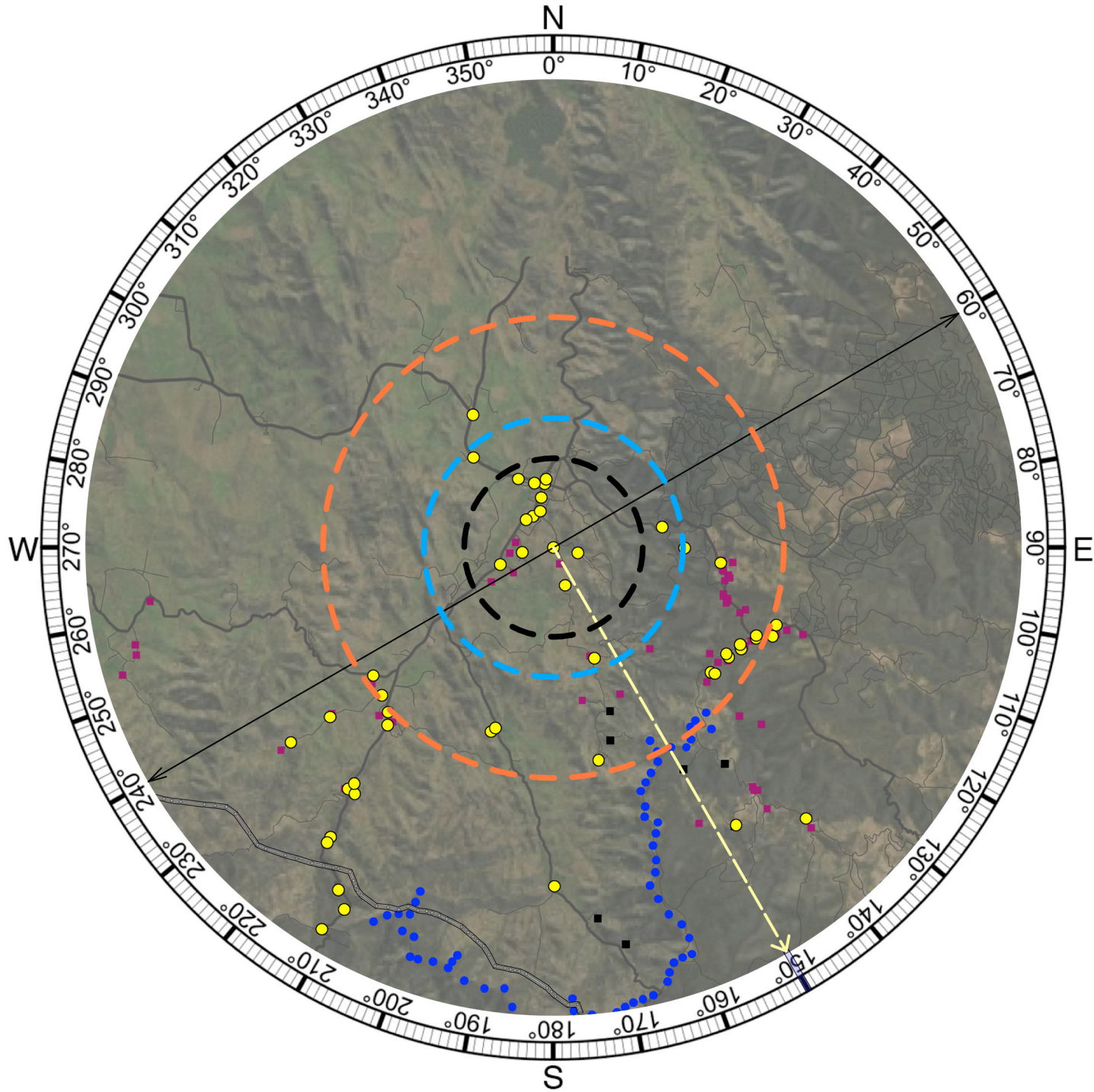


Figure D4A Photomontage 04 (HOG34) Location and Viewing Direction (Aerial image Source: ESRI)

- KEY**
- Photomontage Location
 - Non-associated Dwelling Location
 - Associated Dwelling Location
 - 3100m from viewpoint
 - 4500m from viewpoint
 - 8000m from viewpoint
 - Turbine location
 - ↔ Extent of photomontage
 - Centre of photomontage



Figure D4B Photomontage Location
Aerial image - Source: Six Maps

Photomontage 04



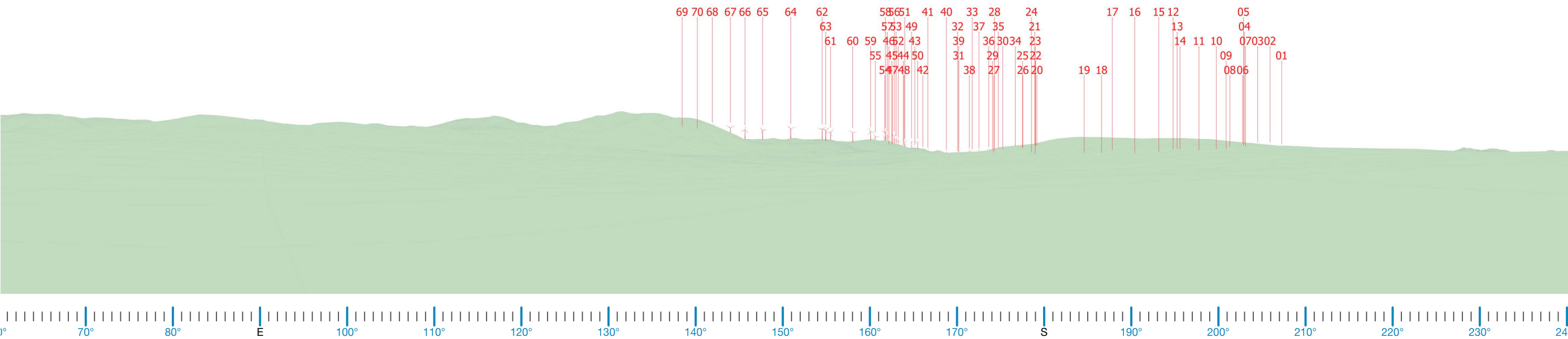
Existing View

Refer to cropped 60° image



Proposed View

Photomontage 04



Proposed Wireframe View

Photomontage 04



Proposed View - 60 degree Field of View

Photomontage 05

Photomontage 05 (HOG44)

Location:
Point Street
Photograph Date and Time:
18th March 2020 8:56am
Coordinates:
31°28'14.15"S 151° 7'24.61"E
Distance to nearest visible WTG:
10.1km (WP59)
Viewing Direction:
Southeast
Elevation:
604m
Representative Dwelling/s:
Nundle Town Centre

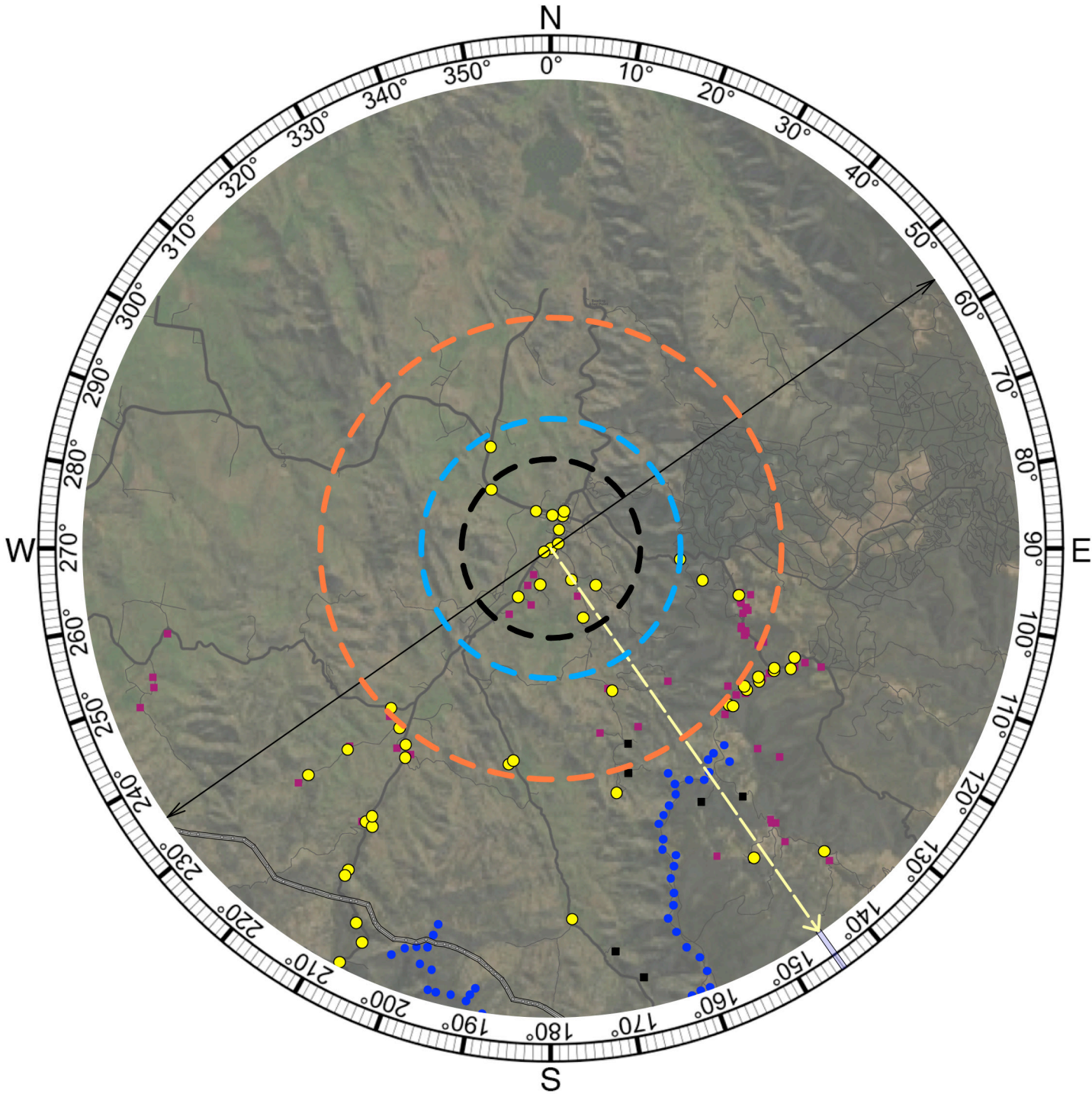


Figure D5A Photomontage 05 (HOG44) Location and Viewing Direction
(Aerial image Source: ESRI)

KEY

Photomontage Location

Non-associated Dwelling Location

Associated Dwelling Location

3100m from viewpoint

4500m from viewpoint

8000m from viewpoint

Turbine location

Extent of photomontage

Centre of photomontage



Figure D5B Photomontage Location
Aerial image - Source: Six Maps

Photomontage 05



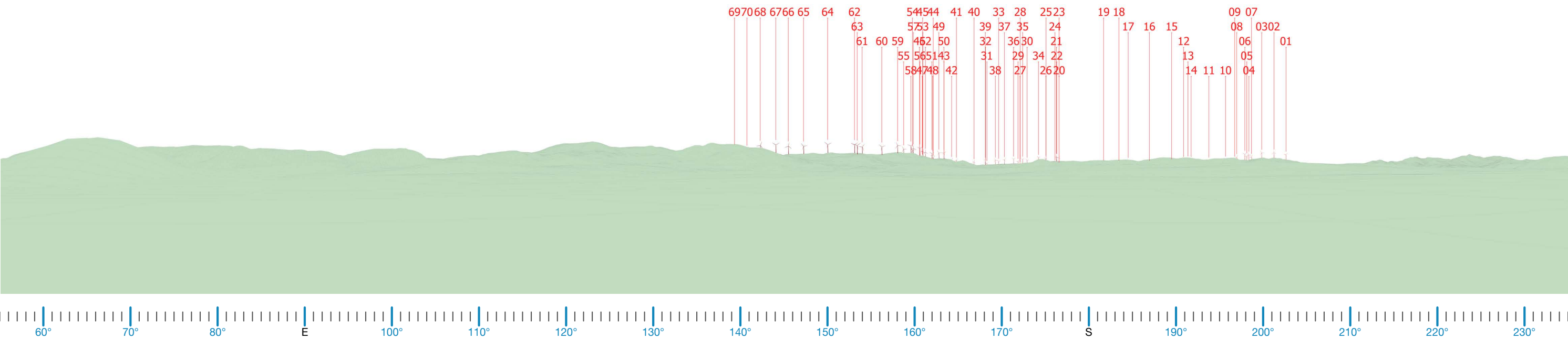
Existing View

Refer to cropped 60° image



Proposed View

Photomontage 05



Proposed Wireframe View

Photomontage 05



Proposed View - 60 degree Field of View

Photomontage 06

Photomontage 06 (HOG24)

Location:
Hanging Rock Lookout
Photograph Date and Time:
16th June 2020 9:34am
Coordinates:
31°28'52.92"S 151°10'42.90"E
Distance to nearest visible WTG:
6.8km (WP63)
Viewing Direction:
Southwest
Elevation:
1090m
Representative Dwelling/s:
n/a

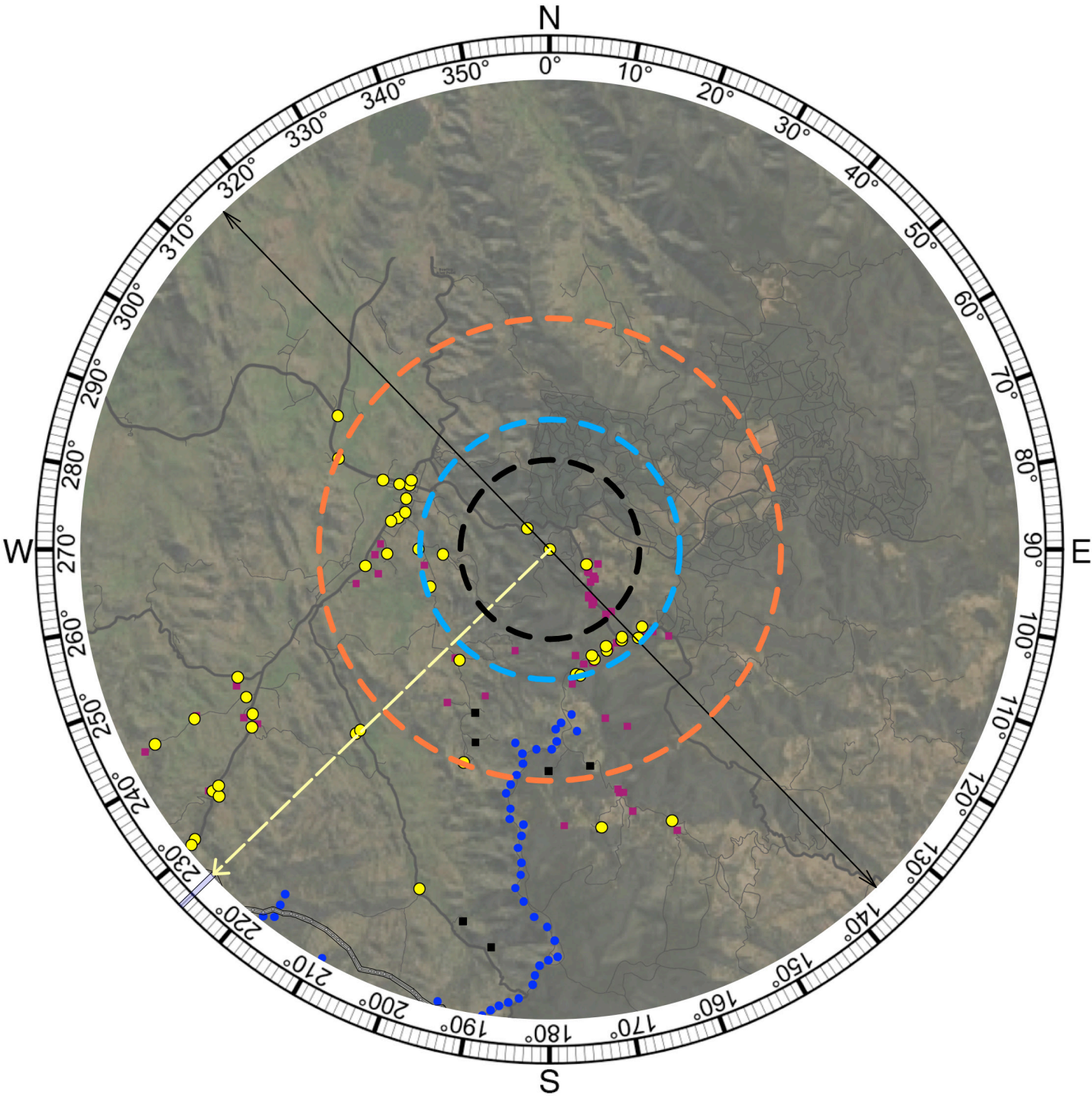


Figure D6A Photomontage 06 (HOG24) Location and Viewing Direction
(Aerial image Source: ESRI)

KEY

Photomontage Location

Non-associated Dwelling Location

Associated Dwelling Location

3100m from viewpoint

4500m from viewpoint

8000m from viewpoint

Turbine location

Extent of photomontage

Centre of photomontage



Figure D6B Photomontage Location
Aerial image - Source: Six Maps

Photomontage 06



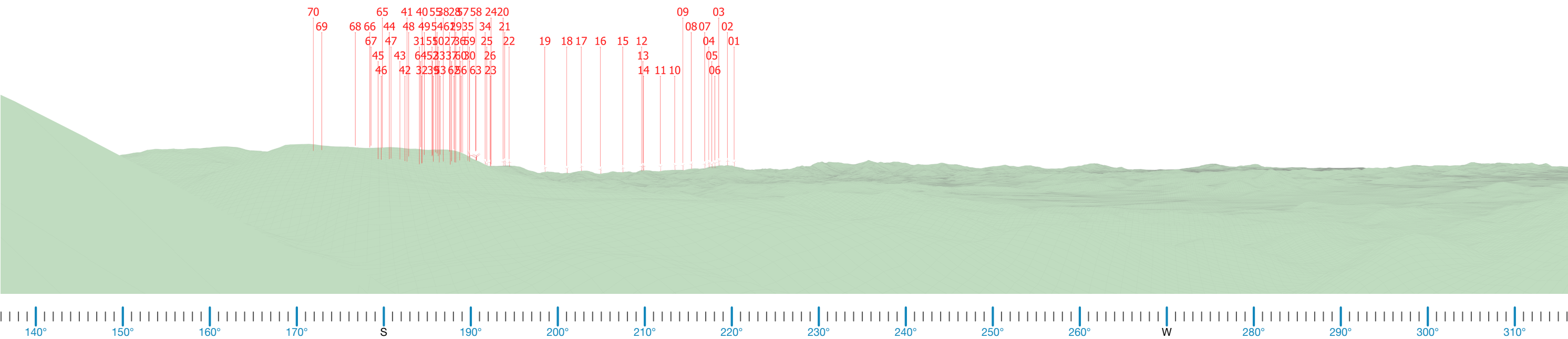
Existing View

Refer to cropped 60° image



Proposed View

Photomontage 06



Proposed Wireframe View

Photomontage 06



Proposed View - 60 degree Field of View