

William Hodgkinson

Subject: Jemena

From: Luke Duncan <luke.duncan@jemena.com.au>

Sent: Tuesday, 3 March 2020 3:23 PM

Cc: LANDS <lands@jemena.com.au>

Subject: RE: SSD 9667 - Light Horse Interchange Business Hub, Eastern Creek Response to Submissions

Hi William,

Jemena has taken the opportunity to review the applicants response to submission for the SSD 9667 – Light Horse Interchange Business Hub and we now provide a supplementary response to clarify Jemena’s position (17th September 2019) on the proposed development and its interface with Jemena's existing buried high pressure gas pipeline.

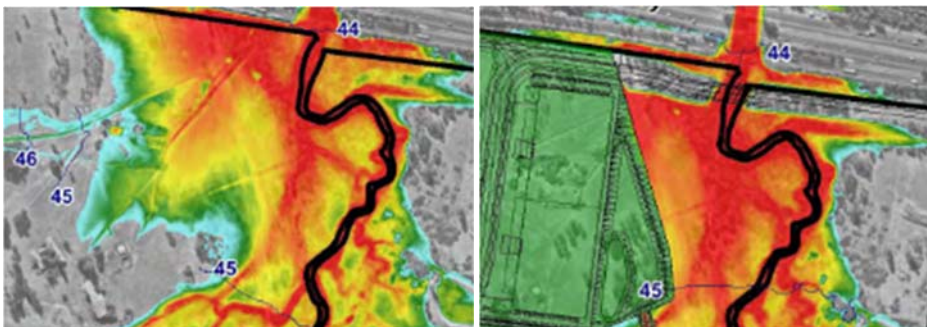
Jemena can confirm that it agrees in principle with the risk assessment conducted by the applicant into Jemena’s high pressure pipeline and that the societal acceptance criteria is in the tolerances for this asset type.

Jemena makes the following observations and requires a commitment for future engagement to ensure requirements are embedded into the project scope:

1. the road crossing: There is some loose requirements that load bearing is considered on the Jemena pipeline. Jemena requests that it be contacted and approval sought in order to obtain design and construction requirements for and load bearing slabs over the pipeline and requirements to allow the road to be constructed (i.e. integrity digs, possible re -wrapping of the protective coating of the pipeline etc)
 - **Gas:** the proposed subdivision and internal road layout has been designed to accommodate the requirements of the 500mm diameter Jemena high pressure gas main and associated 20 metre wide easement. The proposed access road will cross the main in one location and restrictions may be imposed to avoid impacts on structural loads over the gas main.
2. the retention basin overflow: The overflow is intended to have undirected flow over the gas pipeline easement in flood events. Jemena would like some detail regarding how often this basin is likely to overflow.

storm event with a 50% blockage factor applied to all inlet pits/headwalls. The grading of the infrastructure works will direct overland flows induced by the 100 ARI storm event towards the proposed access road reserve without negatively impacting any proposed flood levels or access paths.

3. the change to flood affects: The gas easement appears as if it will now suffer more severe flooding due to the impact of the development. Jemena may need to consider the more pronounced and frequent effects of buoyancy of the pipeline due to flooding.



4. the vibration of work: Jemena has requirements to monitor vibration from construction works on the nearest surface of the pipeline. This is not considered in section 6.11 of the report.

If you seek further clarification of the above, please contact the undersigned who will only be to happy to assist in providing additional comments.

Kind Regards

Luke Duncan

JGN Land Management

Gas Distribution

Jemena

Level 12, 99 Walker Street, North Sydney 2060

PO Box 1220, North Sydney 2060

(02) 9867 8104

luke.duncan@jemena.com.au | www.jemena.com.au



This is a confidential message intended for the named recipient only. If you have received this e-mail in error, please secure its contents and reply to the sender. Thank you.