

Rouse Hill Hospital

Corner of Commercial & Windsor Rd, Rouse Hill NSW, 2155

Landscape SSDA Drawings

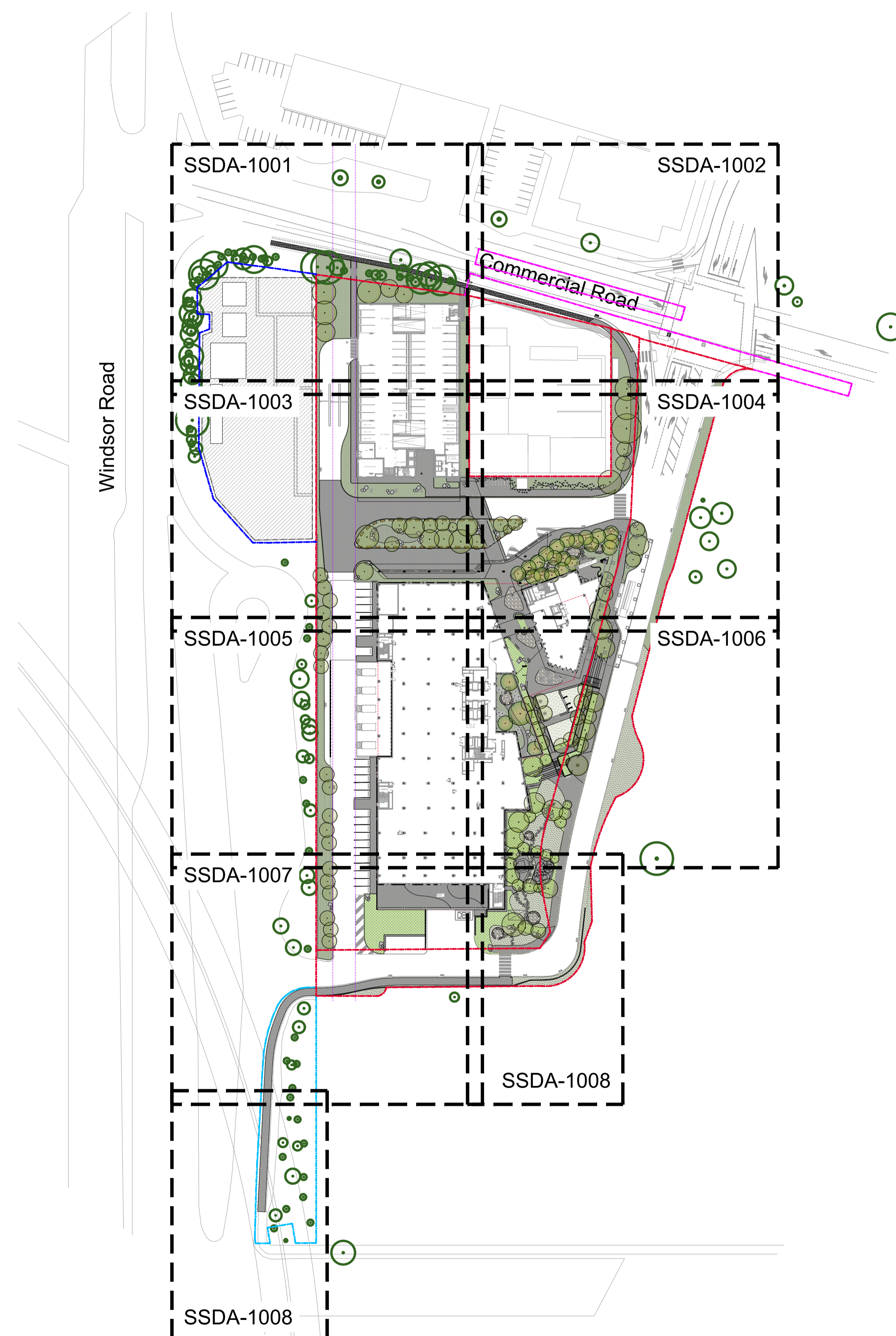
DRAWING SCHEDULE

Dwg No.	Drawing Title	Scale
SSDA-0000	Landscape Coversheet	N/A @ A1
SSDA-0001	Tree Retention & Removal Plan	1:500 @ A1
SSDA-0002	Legend	N/A @ A1
SSDA-1000	Landscape Masterplan	1:500 @ A1
SSDA-1001	Landscape Plan - Ground Floor - Sheet 01	1:150 @ A1
SSDA-1002	Landscape Plan - Ground Floor - Sheet 02	1:150 @ A1
SSDA-1003	Landscape Plan - Ground Floor - Sheet 03	1:150 @ A1
SSDA-1004	Landscape Plan - Ground Floor - Sheet 04	1:150 @ A1
SSDA-1005	Landscape Plan - Ground Floor - Sheet 05	1:150 @ A1
SSDA-1006	Landscape Plan - Ground Floor - Sheet 06	1:150 @ A1
SSDA-1007	Landscape Plan - Ground Floor - Sheet 07	1:150 @ A1
SSDA-1008	Landscape Plan - Ground Floor - Sheet 08	1:150 @ A1
SSDA-1020	Landscape Plan - Level 02	1:250 @ A1
SSDA-1030	Landscape Plan - Level 03	1:250 @ A1
SSDA-1040	Landscape Plan - Level 04	1:250 @ A1
SSDA-1050	Landscape Plan - Level 05	1:250 @ A1
SSDA-1060	Landscape Plan - Level 06	1:250 @ A1
SSDA-1070	Landscape Plan - Level 07	1:250 @ A1
SSDA-1090	Landscape Plan - Level 09	1:250 @ A1
SSDA-7001	Indicative Plant Palette	N/A @ A1

PLANTING SCHEDULE

CwC	Code	Botanic Name	Common Name	Mature Size (H x W)	Pot Size
GROUND FLOOR					
TREES					
Ab		Acacia binerita	Coastal Myall	8 x 8	200L
Ad		Acacia decurrens	Black Wattle	10 x 4	200L
Af		Acacia falcata	Sickle Wattle	3 x 2	200L
Al		Acacia implexa	Lightwood	8 x 7	200L
Al		Allocasuarina teretifolia	Forest She Oak	8 x 5	200L
Ac		Angophora costata	Sydney Red Gum	30 x 15	200L
B		Banksia integrifolia	Coast Banksia	15 x 6	200L
Bo		Banksia oblongifolia	Fern Leaved Banksia	2 x 1.5	200L
Bac		Brachyotum acerifolium	Bavaria Flame Tree	20 x 8	200L
Cf		Corymbia ficifolia cv.	Dwarf Gum	6 x 6	200L
Ea		Eucalyptus agglomerata	Blue Leaved Stringybark	30 x 8	200L
Ef		Eucalyptus piperita	Ricard Oak	30 x 5	200L
Em		Eucalyptus maculata	Spotted Gum	30 x 10	200L
Epl		Eucalyptus piperita	Sydney Peppermint	20 x 8	200L
Eps		Eucalyptus piperita	Blackbutt	20 x 10	200L
Et		Eucalyptus tenebrosa	Forest Red gum	20 x 5	200L
Emo		Eucalyptus moluccana	Grey Box	25 x 8	200L
Ma		Malaleuca decora	White Feather Honey Myrtle	8 x 4	200L
Pla		Platanus hispidus	Broad Leaved Gleditsia	5 x 2	200L
Pil		Personna linearis	Narrow Leaved Gleditsia	2 x 2	200L
Fu		Phytolobum undulatum	Sweet Pittosporum	14 x 7	200L
Pr		Pittosporum revolutum	White Pittosporum	3 x 2.5	200L
Ti		Tristanopsis laurina	Water Gum	13 x 6	200L
PALMS AND FERNS					
Aa		Adiantum aethiopicum	Common Maidenhair Fern	0.5 x 0.8	300mm
Ca		Cyathea australis	Rough Tree Fern	4 x 2	3m clear trunk height
Da		Dicksonia antarctica	Tasmanian Tree Fern	8 x 2	3m clear trunk height
Pe		Pteridium esculentum	Black Fern	2.5 x 1	300mm
PLANTING MATRIX 1 - GRASSLANDS MATRIX					
Aau		Alysicarpus australasicus	Austral Bidge	0.5 x 3	150mm
Ar		Arctostaphylos	Purple Wire Grass	1.2 x 0.5	150mm
Bs		Banksia spinulosa	Hairpin Banksia	3 x 3	150mm
Bau		Brunonella australis	Blue Trumpet	0.15 x 0.15	150mm
Cv		Cymbopogon	Tall Chrome	1 x 0.5	150mm
Dm		Dichelostachya micrantha	Shorthair Plumegrass	1 x 0.3	150mm
Dc		Dianella caerulea	Blue Flax Lily	1 x 2	150mm
Di		Dianella longifolia	Flax Lily	0.6 x 0.6	150mm
Ema		Eriolaena marginata	Bordered Panic Grass	0.8 x 0.8	150mm
Gb		Grewia buxifolia	Grey Spider Flower	1 x 1	300mm
Hd		Hibbertia diffusa	Wedge Guinea Flower	0.3 x spreading	150mm
Lc		Lomandra confertifolia	Mat Rush	0.6 x 0.6	150mm
Li		Lomandra longifolia	Mat Rush	1.2 x 1	150mm
Ta		Themedia australis	Kangaroo Grass	0.7 x 0.5	150mm
Ti		Thysanotus tuberosus	Common Fringe Lily	0.6 x 0.6	150mm
Sg		Syrandera glauca	Nodding Blue Lily	0.6 x 0.6	150mm
Vh		Viola hederifolia	Native Violet	0.2 x spreading	150mm
Ws		Xanthorrhoea stricta	Australian Bluebell	0.4 x 0.4	150mm
Xr		Xanthorrhoea resinosa	Grass Tree	1 x 0.6	1m clear trunk height
Ju		Juncus ustulatus	Common Rush	1 x 0.6	150mm
PLANTING MATRIX 2 - MORTYARD COURTYARD MATRIX					
Aam		Asplenium australasicum	Birds Nest Fern	1.5 x 1.5	300mm
Af		Asplenium fibrofolium	Necklace Fern	0.15 x spreading	300mm
Ah		Actinotus helianthi	Flannel Flower	0.5 x 0.5	150mm
Aw		Allocasuarina	Elephant Ears	1.5 x 1.5	300mm
Ban		Boronia anemonifolia	Sticky Boronia	2 x 2	300mm
Bs		Banksia spinulosa	Native Blackthorn	3 x 4	300mm
BSL		Blechnum Silver Lady	Dwarf Tree Fern	1 x 1	300mm
Dr		Dichondra repens	Kidney Weed	0.15 x spreading	150mm
Gb		Grewia buxifolia	Grey Spider Flower	1 x 1	300mm
Hd		Hibbertia diffusa	Wedge Guinea Flower	0.3 x spreading	150mm
Lf		Lambertia formosa	Honey Flower	2 x 2	150mm
Lm		Liriodendron	Lily Turf	0.4 x 0.4	150mm
Pp		Pandorea pandorana	Wonga Wonga Vine	0.3 x spreading	150mm
Ts		Telopea speciosissima x oreades	Shady Lady White Waratah	3 x 3	300mm
Xr		Xanthorrhoea resinosa	Grass Tree	1.5 x 1.5	1m clear trunk height
Vh		Viola hederifolia	Native Violet	0.2 x spreading	150mm

CwC	Code	Botanic Name	Common Name	Mature Size (H x W)	Pot Size
PLANTING MATRIX 3 - NORTHERN ZONE MATRIX					
Ba		Banksia spinulosa	Hairpin Banksia	2 x 2	300mm
CLJ		Callistemon Little John	Dwarf Bottlebrush	1 x 1	300mm
De		Doronicum aeneum	Gymea Lily	2 x 2	300mm
Gb		Grewia buxifolia	Grey Spider Flower	1 x 1	300mm
Ka		Kunzea ambigua	Tick Bush	2 x 2	300mm
Wf		Westringia fruticosa	Coastal Rosemary	2 x 1.5	300mm
Xr		Xanthorrhoea resinosa	Grass Tree	1.5 x 1.5	1m clear trunk height
Aau		Alysicarpus	Australian Bidge	0.5 x spreading	150mm
Bau		Brunonella australis	Blue Trumpet	0.3 x 0.3	150mm
Hv		Hardenbergia violacea	Purple Coral Pea	0.4 x 1	150mm
LPC		Laportea purpurea	Tea Tree	0.8 x 1.5	300mm
Dre		Dianella revoluta	Blueberry Lily	0.4 x 0.4	150mm
Pp		Pandorea pandorana	Wonga Wonga Vine	0.3 x spreading	150mm
Ws		Wahlenbergia stricta	Australian Bluebell	0.4 x 0.4	150mm
PLANTING MATRIX 4 - WSUD BASIN MATRIX					
Bj		Baumea juncea	Bare Twig Rush	1 x 1	150mm
Ct		Chloris truncata	Australian Fringe Grass	0.45 x 0.3	150mm
Il		Isoplepis uncinata	Swamp Club-rush	0.5 x 0.4	150mm
Jk		Juncus kraussii	Sea Rush	1.5 x 1	150mm
Ju		Juncus ustulatus	Common Rush	1 x 0.6	150mm
Lj		Lomandra longifolia	Mat Rush	1.2 x 1	150mm
PLANTING MATRIX 5 - CASUARINA GROVE MATRIX					
Du		Drosera rotundifolia	Gorse Butter-peg	1.2 x 1	300mm
Ls		Lissanthe strigosa	Peach Heath	1 x 1	300mm
Lc		Lomandra confertifolia	Mat Rush	0.6 x 0.6	150mm
Lj		Lomandra longifolia	Mat Rush	1.2 x 1	150mm
Am		Andropogon mitchellianus	Vanilla Lily	1 x 0.4	150mm
Ar		Arctostaphylos	Purple Wire Grass	1.2 x 0.5	150mm
Gc		Commelina cyanea	Scunry Weed	0.15 x spreading	150mm
Ws		Wahlenbergia stricta	Australian Bluebell	0.4 x 0.4	150mm
UPPER LEVELS					
Ah		Actinotus helianthi	Flannel Flower	0.5 x 0.5	150mm
CCI		Cassinia glauca 'Cousin II'	Cousin II	0.3 x spreading	150mm
De		Doronicum aeneum	Gymea Lily	2 x 2	300mm
Hd		Hibbertia diffusa	Wedge Guinea Flower	0.3 x spreading	150mm
Hv		Hardenbergia violacea	Purple Coral Pea	0.4 x 1	150mm
Bl		Blechnum	Wombat Berry	0.6 x spreading	150mm
Lj		Lomandra longifolia	Mat Rush	1.2 x 1	150mm
Pp		Pandorea pandorana	Wonga Wonga Vine	0.3 x spreading	150mm



© 2021 Site Image (NSW) Pty Ltd ABN 44 801 262 380 as agent for Site Image NSW Partnership. All rights reserved. This drawing is copyright and shall not be reproduced or copied in any form or by any means (graphic, electronic or mechanical including photocopy) without the written permission of Site Image (NSW) Pty Ltd. Any license, expressed or implied, to use this document for any purpose whatsoever is restricted to the terms of the written agreement between Site Image (NSW) Pty Ltd and the instructing party.

The contractor shall check and verify all work on site (including work by others) before commencing the landscape installation. Any discrepancies are to be reported to the Project Manager or Landscape Architect prior to commencing work. Do not scale this drawing. Any required dimensions not shown shall be referred to the Landscape Architect for confirmation.

Issue	Revision Description	Drawn	Check	Date
E	Updated as per Comments	RG	NM	25.08.2025
D	SSDA Issue	JD	NM	27.06.2025
C	40% SD Issue	JD	NM	20.03.2025
B	Updated as per Comments	LH	NM	01.11.2024
A	Draft Issue	LH	NM	24.10.2024

Legend Refer Drawing SSDA-0002
Planting Schedule Refer Drawing SSDA-0000



Project
Rouse Hill Hospital
Corner of Commercial and Windsor Road, Rouse Hill NSW, 2155

Level 1, 3-5 Baptist Street
Redfern NSW 2016
Australia
Tel: (61 2) 8332 5600
Fax: (61 2) 9698 2877
www.siteimage.com.au
Site Image (NSW) Pty Ltd
ABN 44 801 262 380



SSDA
Drawing Name
Landscape Coversheet

Scale N/A
Job Number SS22-4866
Drawing Number SSDA-0000
Issue E

Site Plan | 1:1000 @ A1

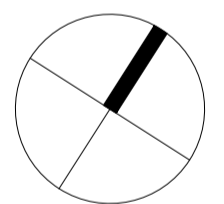
NOT FOR CONSTRUCTION

© 2021 Site Image (NSW) Pty Ltd ABN 44 801 262 380 as agent for Site Image NSW Partnership. All rights reserved. This drawing is copyright and shall not be reproduced or copied in any form or by any means (graphic, electronic or mechanical including photocopy) without the written permission of Site Image (NSW) Pty Ltd. Any license, expressed or implied, to use this document for any purpose what so ever is restricted to the terms of the written agreement between Site Image (NSW) Pty Ltd and the instructing party.

The contractor shall check and verify all work on site (including work by others) before commencing the landscape installation. Any discrepancies are to be reported to the Project Manager or Landscape Architect prior to commencing work. Do not scale this drawing. Any required dimensions not shown shall be referred to the Landscape Architect for confirmation.

D	Updated as per Comments	RG	NM	25.08.2025
C	SSDA Issue	JD	NM	27.06.2025
B	40% SD Issue	JD	NM	20.03.2025
A	Updated as per Comments	LH	NM	01.11.2024
Issue	Revision Description	Drawn	Check	Date

Legend Refer Drawing SSDA-0002
Planting Schedule Refer Drawing SSDA-0000



Client
Rouse Hill Hospital
Corner of Commercial and Windsor Road, Rouse Hill NSW, 2155

Project
SSDA
Level 1, 3-5 Baptist Street
Redfern NSW 2016
Australia
Tel: (61 2) 8332 5600
Fax: (61 2) 9698 2877
www.siteimage.com.au
Site Image (NSW) Pty Ltd
ABN 44 801 262 380



Drawing Name
Tree Retention & Removal Plan

Scale 1:750 @ A1
Job Number: SS22-4866
Drawing Number: SSDA-0001
Issue: D

NOT FOR CONSTRUCTION

The contractor shall check and verify all work on site (including work by others) before commencing the landscape installation. Any discrepancies are to be reported to the Project Manager or Landscape Architect prior to commencing work. Do not scale this drawing. Any required dimensions not shown shall be referred to the Landscape Architect for confirmation.

A Updated as per Comments
Issue Revision Description RG NM 25.08.2025
Drawn Check Date

Legend Refer Drawing SSSA-0002
Planting Schedule Refer Drawing SSSA-0000

Legend and Softworks

	Site Boundary Hospital Boundary
	Commercial Road Works Site Boundary
	Temporary Site Shed Zone Site Boundary
	Metro Pathway Site Boundary
	Building / Roof / Awning above Refer Architectural Documentation
	OSD Under Refer Civil Documentation
	Basement Under Refer Architectural Documentation
	HV Cable Easement Easement based on Survey 5254-Detail-RevK
+ Ex. 00.00 + RL 00.00 + 00.00 + TOW 00.00 + TOH 00.00 + TOS 00.00	Existing Levels Reduced Levels Spot Levels Top of Wall Top of Hob Top of Seat

Legend and Softworks

	Proposed Trees
	Turf
	Grass and groundcover planting Refer Planting Schedule
	Matrix 1 Grasslands Matrix Refer Planting Schedule
	Matrix 2 Courtyards Matrix Refer Planting Schedule
	Matrix 3 Northern Zone Matrix Refer Planting Schedule
	Matrix 4 WSUD Basin Matrix Refer Planting Schedule
	Matrix 5 Casuarina Grove Matrix Refer Planting Schedule
	Boulders Size 1 - 750mm to 1000mm Size 2 - 1000mm to 1500mm Size 3 - 1500mm to 2000mm
	Sandstone Logs 1500 x 450mm x 500mm high

Hardworks

	Paving Type 1 Exposed Aggregate Oxide InSitu Concrete Paving Surface to be sealed
	Paving Type 2 Exposed Aggregate Oxide InSitu Concrete Paving Surface to be sealed
	Paving Type 3 Exposed Aggregate Oxide InSitu Concrete Paving Surface to be sealed
	Paving Type 4 Feature Natural Stone Flagstone Paving Honed Finish Surface to be sealed
	Paving Type 5 Feature Granite Unit Paving Exfoliated Finish Surface to be sealed
	Paving Type 6 Flagstone Steppers Exfoliated Finish
	Paving Type 7 Feature Unit Paving Shared Driveway and Walkway Surface to be sealed
	Paving Type 8 Rosehill TPV Softfall (Colour TBC)
	Gravel Type 1 Ballast Colour TBC
	Gravel Type 2 Ballast Colour TBC
	Gravel Type 3 Ballast Colour TBC
	Wall Type 1 200mm In Situ Concrete Wall Anti-Graffiti surface coating
	Wall Type 2 500mm In Situ Concrete Seating Wall Anti-Graffiti surface coating
	Civil Retaining Wall Retaining Wall to Civil Detail Refer to Civil Documentation
	Edge Type 1 Flush Concrete Edge
	Edge Type 2 Steel Edge
	Handrail Type 1 Fixed on 150mm Hob
	Handrail Type 2 Fixed on Surface
	Discrete Tactile Indicators

Furniture

	Furniture Type 1 Seat with Back and Armrest Wall-Top Mounted
	Furniture Type 2 Bench Wall-Top Mounted
	Furniture Type 3 Curved Seat with Back and Armrest Wall-Top Mounted
	Furniture Type 4 Bin 240L with composite timber slats and cover Surface Mounted
	Furniture Type 5 Water Fountain with Dog Bubbler Surface Mounted
	Furniture Type 6 Cafe Table Free Standing TBC
	Furniture Type 7 Cafe Chair Free Standing TBC
	Furniture Type 8 Vehicle Deterrent Bollards Sub-Surface Fixed
	Furniture Type 10 Bike Rack Surface Fixed
	Signage Totem Design TBC Refer to Architects Documentation

Fitness Equipment

	Fitness Equipment Type 1 Exercise Benches Sub-Surface Mounted
	Fitness Equipment Type 2 6 Station All Access Gym Sub-Surface Mounted

Rehabilitation Space - Level 6

	Fence Type 1 Fence & Gate (Materials & Colour TBC)
	Edge Type 3 150mm wide raised Concrete Kerb
	Furniture Type 9 Wheeler Bins
	Paving Type P9 Gravel Paving (Colour TBC)
	Paving Type P10 Resin-bound Gravel Paving (Colour TBC)
	Paving Type P11 Stepping Pavers in Deco Granite (Colour TBC)

Existing Trees

	Existing Tree to be Retained
	Existing Tree to be Removed
	NRZ Notional Root Zone
	SRZ Structural Root Zone
	Tree Identification Number
Refer to Arboricultural Impact Assessment prepared for NSW Health Infrastructure by Creative Planning Solutions Pty Ltd; dated 22 August 2025 Revision A	



Project
Rouse Hill Hospital
Corner of Commercial and Windsor
Road, Rouse Hill NSW, 2155

Level 1, 3-5 Baptist Street
Redfern NSW 2016
Australia
Tel: (61 2) 8332 5600
Fax: (61 2) 9698 2877
www.siteimage.com.au
Site Image (NSW) Pty Ltd
ABN 44 801 262 380



SSDA

Drawing Name
Legend

Scale N/A
Job Number Drawing Number Issue
SS22-4866 SSSA-0002 A

NOT FOR CONSTRUCTION

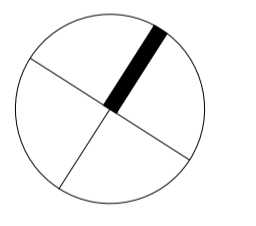


© 2021 Site Image (NSW) Pty Ltd ABN 44 801 262 380 as agent for Site Image NSW Partnership. All rights reserved. This drawing is copyright and shall not be reproduced or copied in any form or by any means (graphic, electronic or mechanical including photocopy) without the written permission of Site Image (NSW) Pty Ltd. Any license, expressed or implied, to use this document for any purpose whatsoever is restricted to the terms of the written agreement between Site Image (NSW) Pty Ltd and the instructing party.

The contractor shall check and verify all work on site (including work by others) before commencing the landscape installation. Any discrepancies are to be reported to the Project Manager or Landscape Architect prior to commencing work. Do not scale this drawing. Any required dimensions not shown shall be referred to the Landscape Architect for confirmation.

Issue	Revision Description	Drawn	Check	Date
D	Updated as per Comments	RG	NM	25.08.2025
C	SSDA Issue	JD	NM	27.06.2025
B	SSDA Issue	JD	NM	12.03.2025
A	FOR DISCUSSION	JD	NM	17.01.2025

Legend Refer Drawing SSDA-0002
Planting Schedule Refer Drawing SSDA-0000



Client


Project
Rouse Hill Hospital
 Corner of Commercial and Windsor Road, Rouse Hill NSW, 2155

S I T E I M A G E
 Level 1, 3-5 Baptist Street
 Redfern NSW 2016
 Australia
 Tel: (61 2) 8332 5600
 Fax: (61 2) 9698 2877
 www.siteimage.com.au
 Site Image (NSW) Pty Ltd
 ABN 44 801 262 380



Landscape Architects

SSDA
 Drawing Name
Landscape Masterplan

Scale 1:750 @ A1
 Job Number Drawing Number Issue
 SS22-4866 SSDA-1000 D

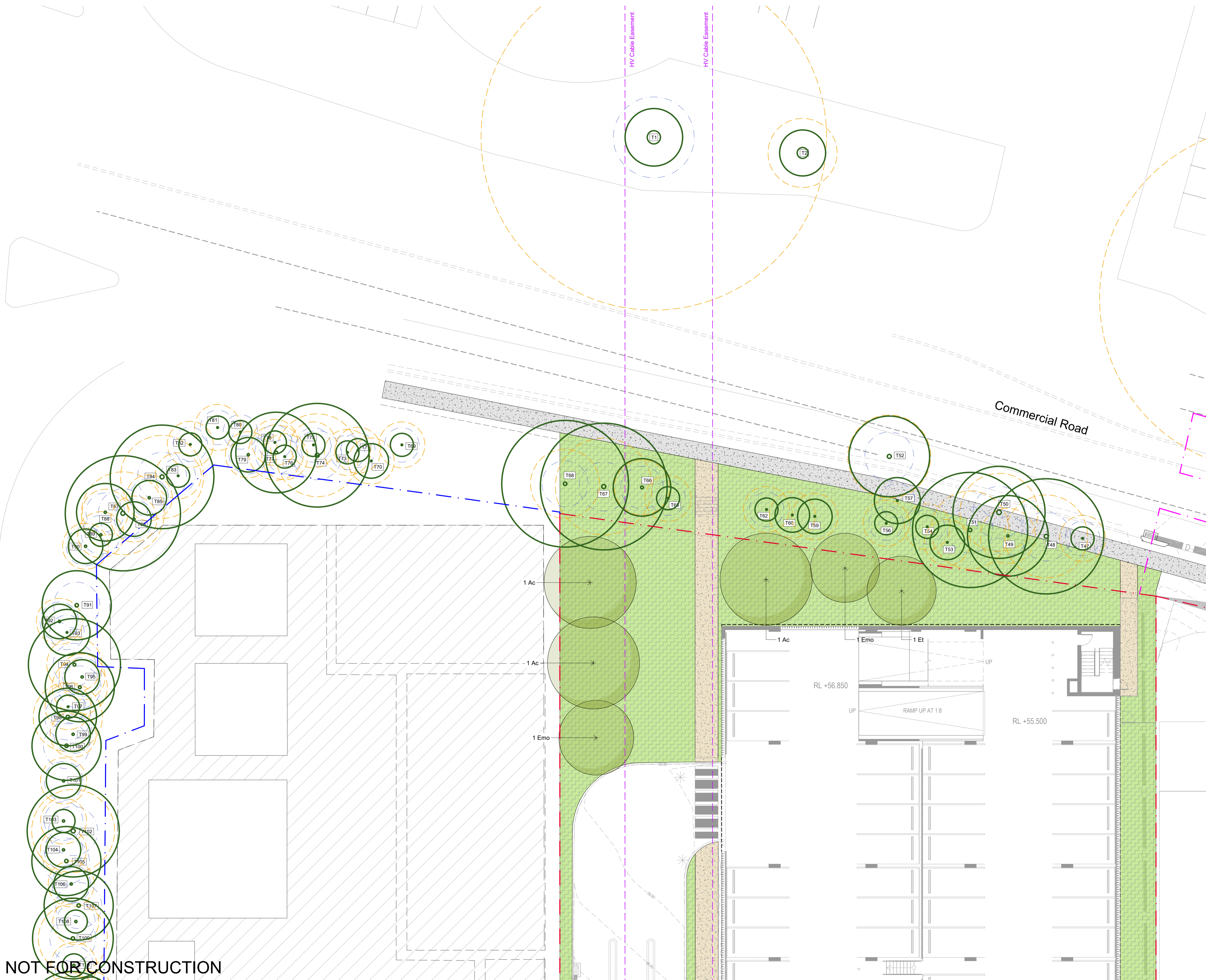
NOT FOR CONSTRUCTION

© 2021 Site Image (NSW) Pty Ltd ABN 44 801 262 380 as agent for Site Image NSW Partnership. All rights reserved. This drawing is copyright and shall not be reproduced or copied in any form or by any means (graphic, electronic or mechanical including photocopy) without the written permission of Site Image (NSW) Pty Ltd. Any license, expressed or implied, to use this document for any purpose whatsoever is restricted to the terms of the written agreement between Site Image (NSW) Pty Ltd and the instructing party.

The contractor shall check and verify all work on site (including work by others) before commencing the landscape installation. Any discrepancies are to be reported to the Project Manager or Landscape Architect prior to commencing work. Do not scale this drawing. Any required dimensions not shown shall be referred to the Landscape Architect for confirmation.

D	Updated as per Comments	RG	NM	25.08.2025
C	SSDA Issue	JD	NM	27.06.2025
B	Updated as per Comments	LH	NM	01.11.2024
A	Draft Issue	LH	NM	24.10.2024
Issue	Revision Description	Drawn	Check	Date

Legend Refer Drawing SSDA-0002
Planting Schedule Refer Drawing SSDA-0000



Client

 Project
Rouse Hill Hospital
 Corner of Commercial and Windsor Road, Rouse Hill NSW, 2155

SITE IMAGE
 Level 1, 3-5 Baptist Street
 Redfern NSW 2016
 Australia
 Tel: (61 2) 8332 5600
 Fax: (61 2) 9698 2877
 www.siteimage.com.au
 Site Image (NSW) Pty Ltd
 ABN 44 801 262 380

 Landscape Architects

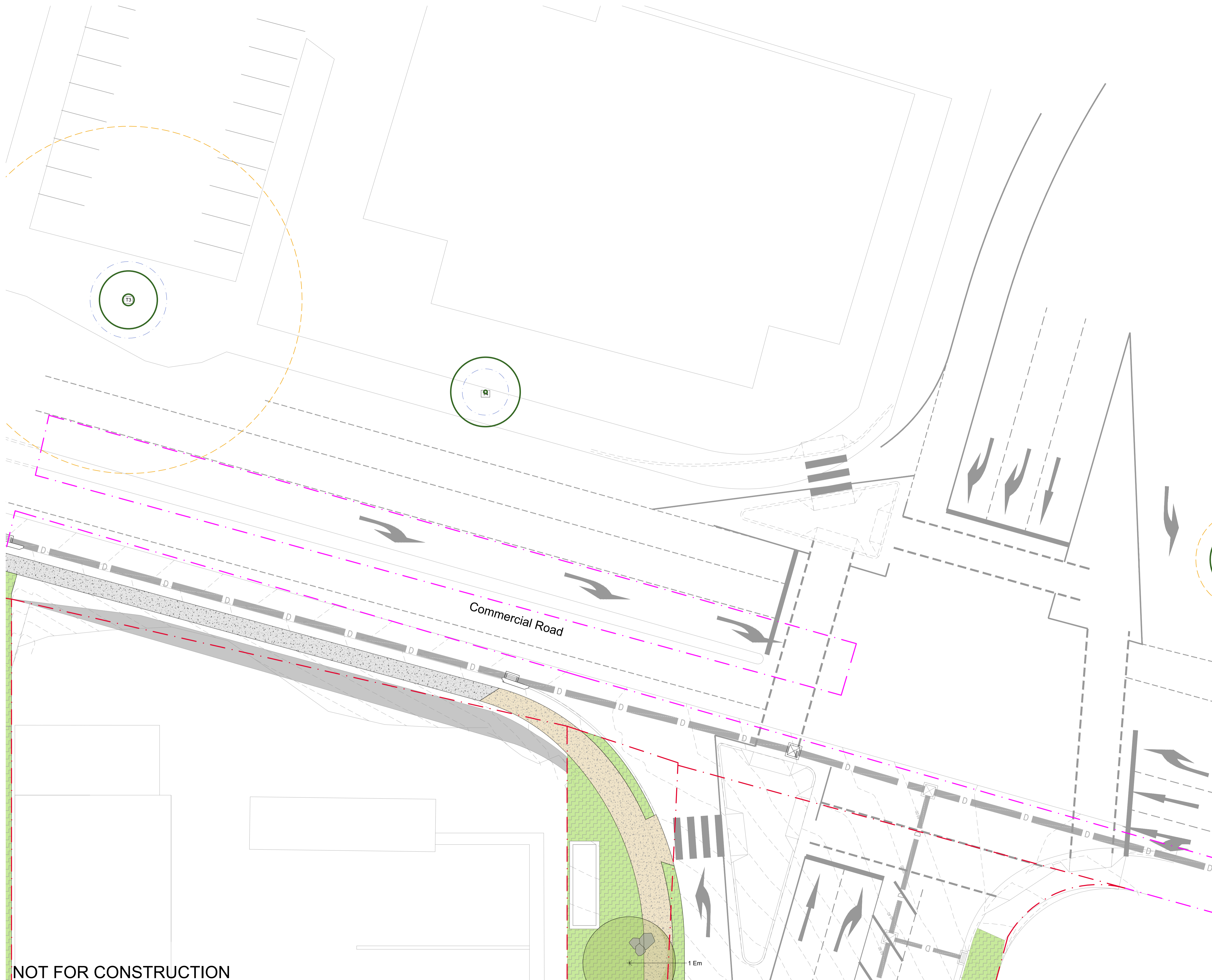
SSDA
 Drawing Name
Landscape Plan
Ground Floor - Sheet 01
 Scale 1:150 @ A1
 Job Number
SS22-4866
 Drawing Number
SSDA-1001
 Issue
D

© 2021 Site Image (NSW) Pty Ltd ABN 44 801 262 380 as agent for Site Image NSW Partnership. All rights reserved. This drawing is copyright and shall not be reproduced or copied in any form or by any means (graphic, electronic or mechanical including photocopy) without the written permission of Site Image (NSW) Pty Ltd. Any license, expressed or implied, to use this document for any purpose whatsoever is restricted to the terms of the written agreement between Site Image (NSW) Pty Ltd and the instructing party.

The contractor shall check and verify all work on site (including work by others) before commencing the landscape installation. Any discrepancies are to be reported to the Project Manager or Landscape Architect prior to commencing work. Do not scale this drawing. Any required dimensions not shown shall be referred to the Landscape Architect for confirmation.

D	Updated as per Comments	RG	NM	25.08.2025
C	SSDA Issue	JD	NM	27.06.2025
B	Updated as per Comments	LH	NM	01.11.2024
A	Draft Issue	LH	NM	24.10.2024
Issue	Revision Description	Drawn	Check	Date

Legend Refer Drawing SSDA-0002
Planting Schedule Refer Drawing SSDA-0000



NOT FOR CONSTRUCTION

Client

Project
Rouse Hill Hospital
 Corner of Commercial and Windsor Road, Rouse Hill NSW, 2155

SITE IMAGE

 Landscape Architects

Level 1, 3-5 Baptist Street
 Redfern NSW 2016
 Australia
 Tel: (61 2) 8332 5600
 Fax: (61 2) 9698 2877
 www.siteimage.com.au
 Site Image (NSW) Pty Ltd
 ABN 44 801 262 380

SSDA

Drawing Name
Landscape Plan
Ground Floor - Sheet 02

Scale 1:150 @ A1
 Job Number **SS22-4866**
 Drawing Number **SSDA-1002**
 Issue **D**



© 2021 Site Image (NSW) Pty Ltd ABN 44 801 262 380 as agent for Site Image NSW Partnership. All rights reserved. This drawing is copyright and shall not be reproduced or copied in any form or by any means (graphic, electronic or mechanical including photocopy) without the written permission of Site Image (NSW) Pty Ltd. Any license, expressed or implied, to use this document for any purpose whatsoever is restricted to the terms of the written agreement between Site Image (NSW) Pty Ltd and the instructing party.

The contractor shall check and verify all work on site (including work by others) before commencing the landscape installation. Any discrepancies are to be reported to the Project Manager or Landscape Architect prior to commencing work. Do not scale this drawing. Any required dimensions not shown shall be referred to the Landscape Architect for confirmation.

D	Updated as per Comments	RG	NM	25.08.2025
C	SSDA Issue	JD	NM	27.06.2025
B	Updated as per Comments	LH	NM	01.11.2024
A	Draft Issue	LH	NM	24.10.2024
Issue	Revision Description	Drawn	Check	Date

Legend Refer Drawing SSDA-0002
Planting Schedule Refer Drawing SSDA-0000



Client
NSW Health Infrastructure
Project
Rouse Hill Hospital
Corner of Commercial and Windsor Road, Rouse Hill NSW, 2155

SITE IMAGE
Level 1, 3-5 Baptist Street
Redfern NSW 2016
Australia
Tel: (61 2) 8332 5600
Fax: (61 2) 9698 2877
www.siteimage.com.au
Site Image (NSW) Pty Ltd
ABN 44 801 262 380
Landscape Architects

SSDA
Drawing Name
Landscape Plan
Ground Floor - Sheet 03
Scale 1:150 @ A1
Job Number
SS22-4866
Drawing Number
SSDA-1003
Issue
D

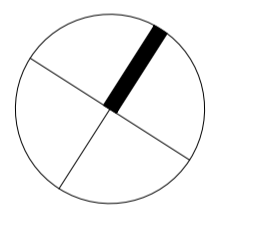
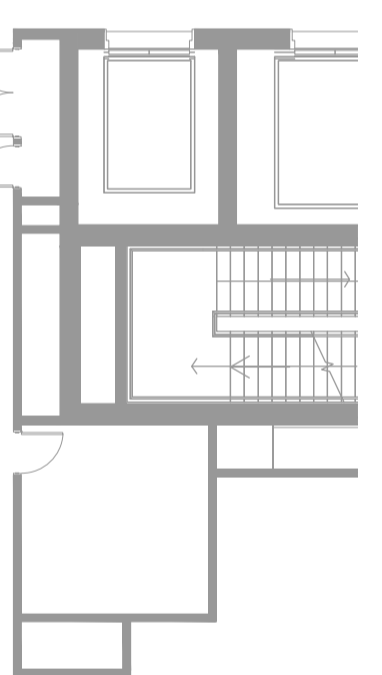
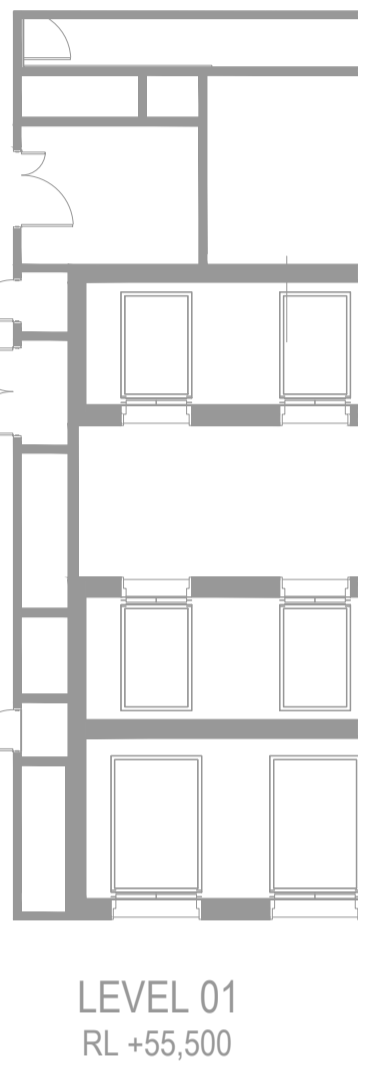
NOT FOR CONSTRUCTION

© 2021 Site Image (NSW) Pty Ltd ABN 44 801 262 380 as agent for Site Image NSW Partnership. All rights reserved. This drawing is copyright and shall not be reproduced or copied in any form or by any means (graphic, electronic or mechanical including photocopy) without the written permission of Site Image (NSW) Pty Ltd. Any license, expressed or implied, to use this document for any purpose whatsoever is restricted to the terms of the written agreement between Site Image (NSW) Pty Ltd and the instructing party.

The contractor shall check and verify all work on site (including work by others) before commencing the landscape installation. Any discrepancies are to be reported to the Project Manager or Landscape Architect prior to commencing work. Do not scale this drawing. Any required dimensions not shown shall be referred to the Landscape Architect for confirmation.

D	Updated as per Comments	RG	NM	25.08.2025
C	SSDA Issue	JD	NM	27.06.2025
B	Updated as per Comments	LH	NM	01.11.2024
A	Draft Issue	LH	NM	24.10.2024
Issue	Revision Description	Drawn	Check	Date

Legend Refer Drawing SSDA-0002
Planting Schedule Refer Drawing SSDA-0000



Client

 Project
Rouse Hill Hospital
 Corner of Commercial and Windsor Road, Rouse Hill NSW, 2155

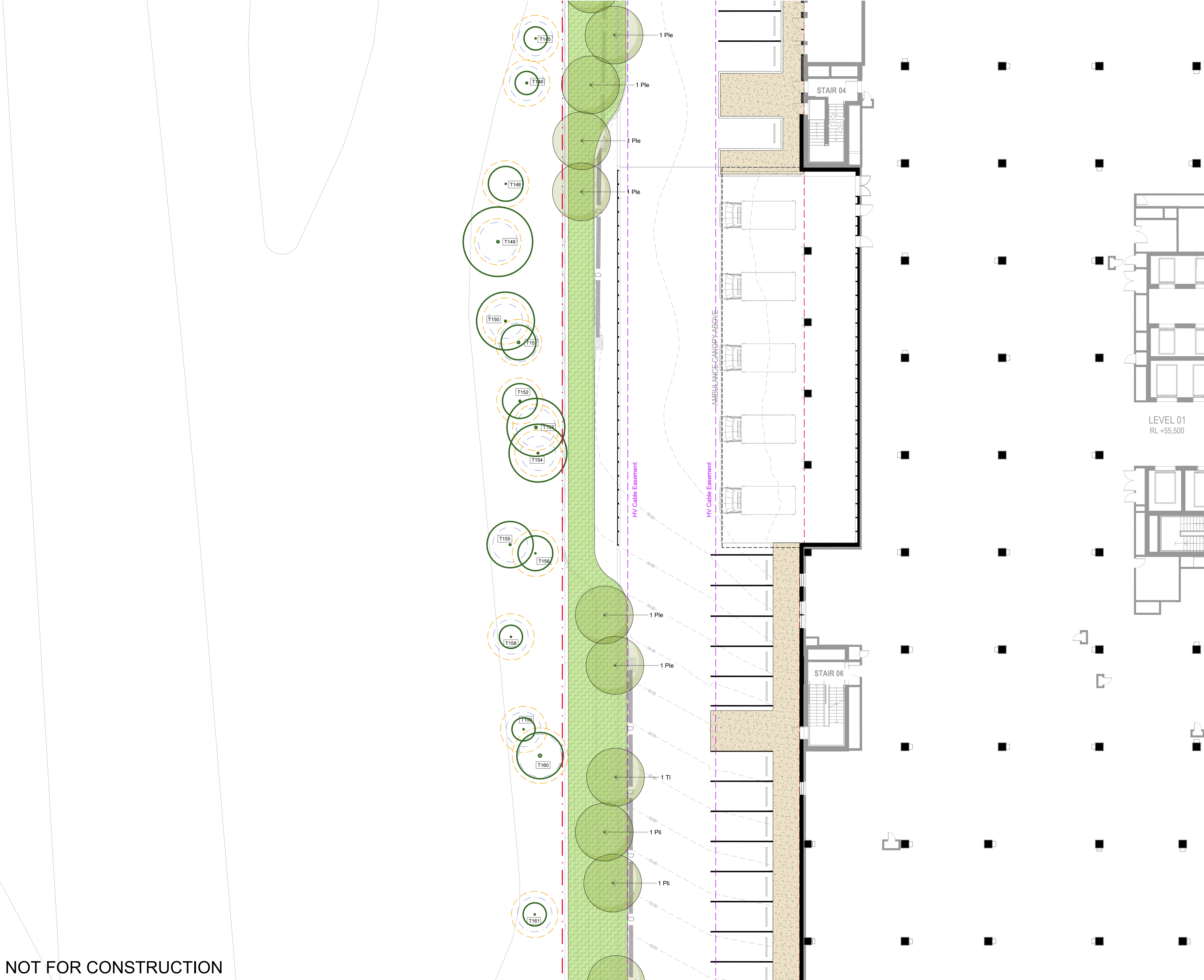
SITE IMAGE
 Level 1, 3-5 Baptist Street
 Redfern NSW 2016
 Australia
 Tel: (61 2) 8332 5600
 Fax: (61 2) 9698 2877
 www.siteimage.com.au
 Site Image (NSW) Pty Ltd
 ABN 44 801 262 380

 Landscape Architects

SSDA
 Drawing Name
Landscape Plan
Ground Floor - Sheet 05
 Scale 1:150 @ A1
 Job Number
SS22-4866
 Drawing Number
SSDA-1005
 Issue
D

NOT FOR CONSTRUCTION

A1



© 2021 Site Image (NSW) Pty Ltd ABN 44 801 262 380 as agent for Site Image NSW Partnership. All rights reserved. This drawing is copyright and shall not be reproduced or copied in any form or by any means (graphic, electronic or mechanical including photocopy) without the written permission of Site Image (NSW) Pty Ltd. Any license, expressed or implied, to use this document for any purpose whatsoever is restricted to the terms of the written agreement between Site Image (NSW) Pty Ltd and the instructing party.

The contractor shall check and verify all work on site (including work by others) before commencing the landscape installation. Any discrepancies are to be reported to the Project Manager or Landscape Architect prior to commencing work. Do not scale this drawing. Any required dimensions not shown shall be referred to the Landscape Architect for confirmation.

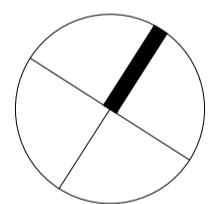
A Updated as per Comments
 Issue Revision Description RG NM 25.08.2025
 Drawn Check Date

Legend Refer Drawing SSSA-0002
 Planting Schedule Refer Drawing SSSA-0000



NOT FOR CONSTRUCTION

A1



Client
 Rouse Hill Hospital
 Corner of Commercial and Windsor
 Road, Rouse Hill NSW, 2155

Project
 Rouse Hill Hospital
 Corner of Commercial and Windsor
 Road, Rouse Hill NSW, 2155

SITE IMAGE
 Level 1, 3-5 Baptist Street
 Redfern NSW 2016
 Australia
 Tel: (61 2) 8332 5600
 Fax: (61 2) 9698 2877
 www.siteimage.com.au
 Site Image (NSW) Pty Ltd
 ABN 44 801 262 380

Landscape Architects

SSDA
 Drawing Name
 Landscape Plan
 Ground Floor - Sheet 06

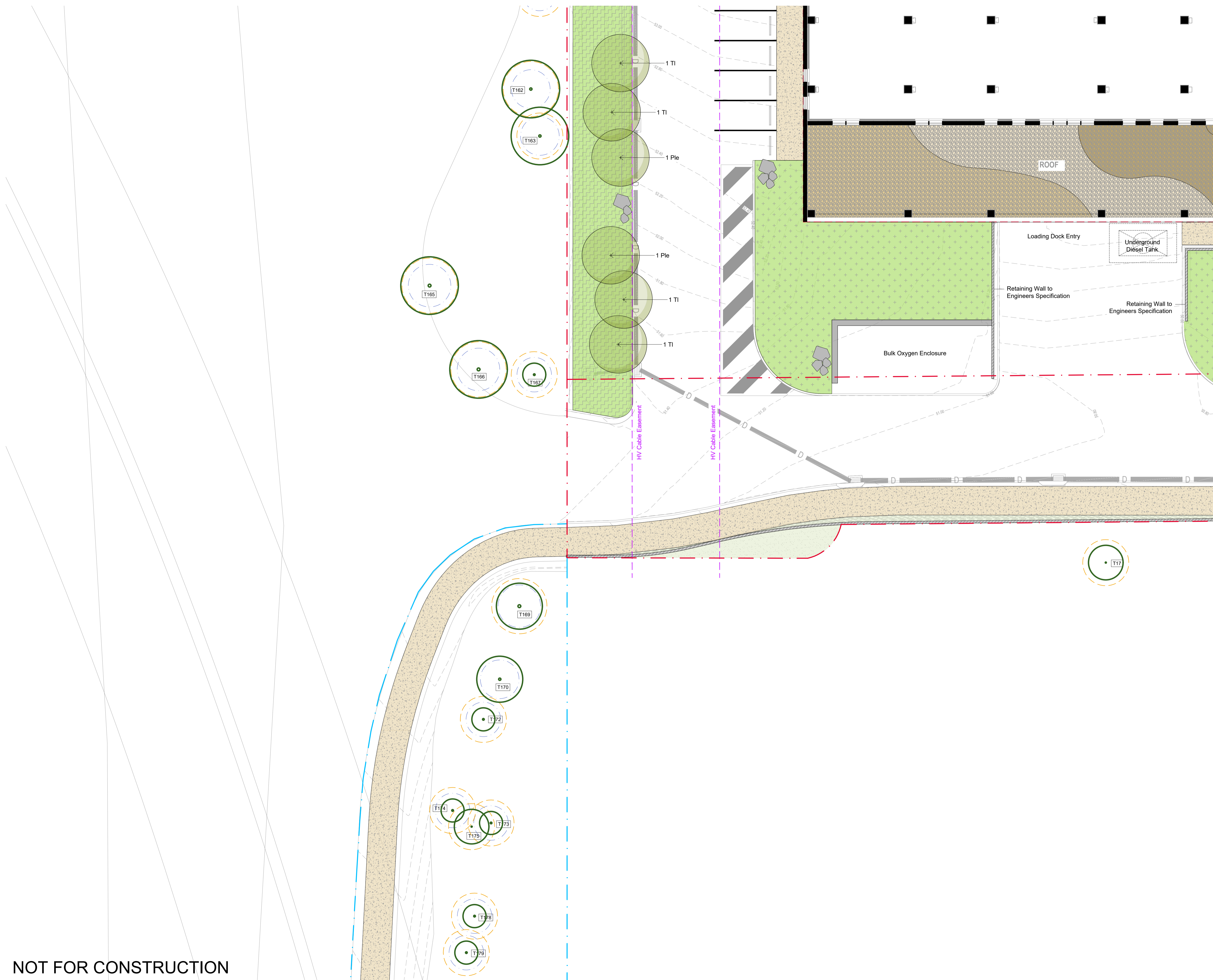
Scale 1:150 @ A1
 Job Number SS22-4866
 Drawing Number SSSA-1006
 Issue A

© 2021 Site Image (NSW) Pty Ltd ABN 44 801 262 380 as agent for Site Image NSW Partnership. All rights reserved. This drawing is copyright and shall not be reproduced or copied in any form or by any means (graphic, electronic or mechanical including photocopy) without the written permission of Site Image (NSW) Pty Ltd. Any license, expressed or implied, to use this document for any purpose whatsoever is restricted to the terms of the written agreement between Site Image (NSW) Pty Ltd and the instructing party.

The contractor shall check and verify all work on site (including work by others) before commencing the landscape installation. Any discrepancies are to be reported to the Project Manager or Landscape Architect prior to commencing work. Do not scale this drawing. Any required dimensions not shown shall be referred to the Landscape Architect for confirmation.

Issue	Updated as per Comments	RG	NM	25.08.2025
Revision Description		Drawn	Check	Date

Legend Refer Drawing SSSA-0002
Planting Schedule Refer Drawing SSSA-0000



NOT FOR CONSTRUCTION

A1

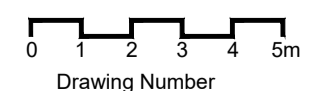


Client
NSW Health Infrastructure
 Project
Rouse Hill Hospital
 Corner of Commercial and Windsor Road, Rouse Hill NSW, 2155

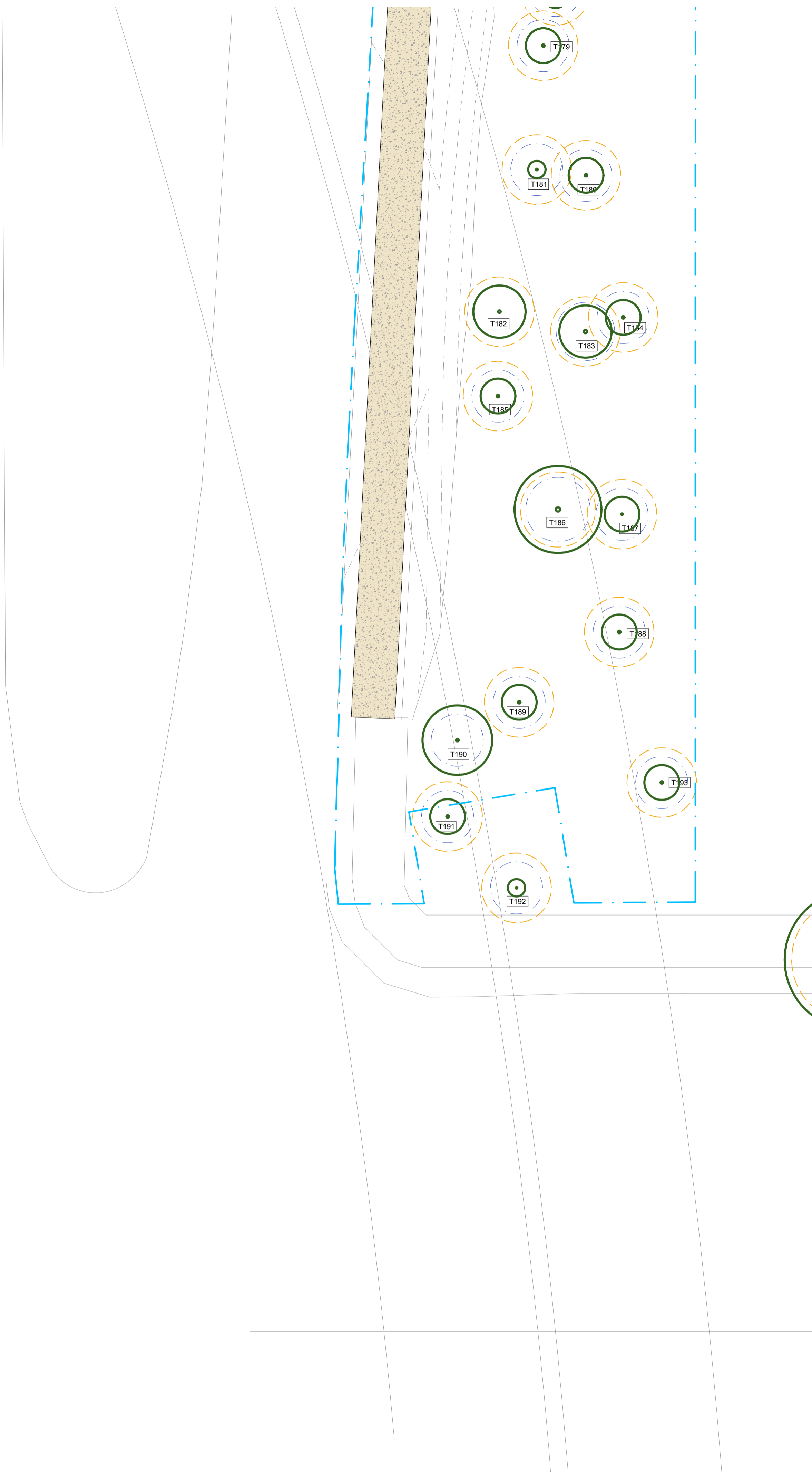
SITE IMAGE
 Level 1, 3-5 Baptist Street
 Redfern NSW 2016
 Australia
 Tel: (61 2) 8332 5600
 Fax: (61 2) 9698 2877
 www.siteimage.com.au
 Site Image (NSW) Pty Ltd
 ABN 44 801 262 380



SSDA
 Drawing Name
Landscape Plan
Ground Floor - Sheet 07
 Scale 1:150 @ A1
 Job Number
SS22-4866



Drawing Number	SSDA-1007	Issue	A
----------------	-----------	-------	---



© 2021 Site Image (NSW) Pty Ltd. ABN 44 801 262 380 as agent for Site Image NSW Partnership. All rights reserved. This drawing is copyright and shall not be reproduced or copied in any form or by any means (graphic, electronic or mechanical including photocopy) without the written permission of Site Image (NSW) Pty Ltd. Any license, expressed or implied, to use this document for any purpose whatsoever is restricted to the terms of the written agreement between Site Image (NSW) Pty Ltd and the instructing party.

The contractor shall check and verify all work on site (including work by others) before commencing the landscape installation. Any discrepancies are to be reported to the Project Manager or Landscape Architect prior to commencing work. Do not scale this drawing. Any required dimensions not shown shall be referred to the Landscape Architect for confirmation.

Issue	Revision Description	Drawn	Check	Date
A	Updated as per Comments	RG	NM	25.08.2025

Legend Refer Drawing SSSA-0002
Planting Schedule Refer Drawing SSSA-0000

NOT FOR CONSTRUCTION

A1



Client
Rouse Hill Hospital
Corner of Commercial and Windsor Road, Rouse Hill NSW, 2155

Project
SSDA

Level 1, 3-5 Baptist Street
Redfern NSW 2016
Australia
Tel: (61 2) 8332 5600
Fax: (61 2) 9698 2877
www.siteimage.com.au
Site Image (NSW) Pty Ltd
ABN 44 801 262 380



Drawing Name
Landscape Plan
Ground Floor - Sheet 08

Scale 1:150 @ A1

Job Number
SS22-4866

Drawing Number
SSDA-1008

Issue
A

